

V&V Reference Report

L2 ASCDS Version : 7.6.10

Observation 61978 - L2 Version 001
Chandra X-Ray Center

L2 Processing Date : Jun 2 2007

Contents

| | | |
|----------|-------------------------------|----------|
| 1 | Front | 2 |
| 2 | OBI | 3 |
| 2.1 | OBI | 3 |
| 2.1.1 | Images | 3 |
| 2.1.2 | Bias | 3 |
| 2.1.3 | Parameters | 4 |
| 2.1.4 | Events | 4 |
| 2.2 | Compared Parameters | 5 |
| 2.3 | Star Slots | 6 |
| 2.4 | FID Slots | 6 |
| A | Summary | 7 |
| A.1 | Status | 7 |
| A.2 | Comments | 7 |

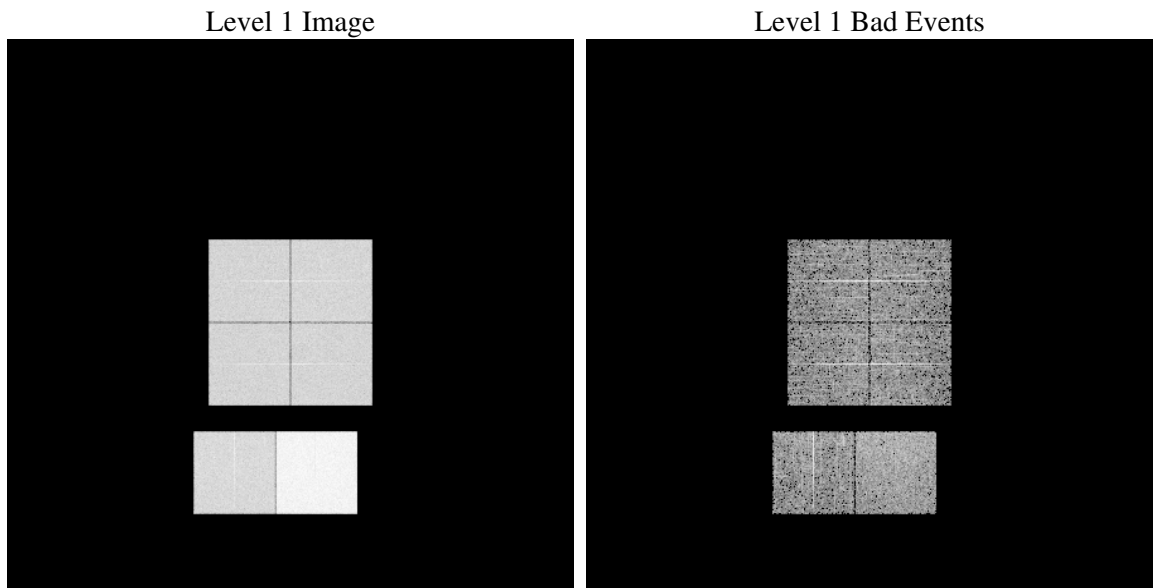
1 Front

| | |
|----------|-------------------------------------------------|
| seq_num | |
| obs_id | 61978 |
| title | ACIS-012367 diagnostics |
| observer | CHANDRA engineering request/realtime commanding |
| object | |
| dtcycle | 0 |
| cycle | P |
| ra_targ | 0.0 |
| dec_targ | 0.0 |
| ra_nom | 180.84349007754 |
| dec_nom | -41.868355161079 |
| roll_nom | 227.8330640442 |
| revision | 3 |
| ontime | 5062.210433647 |
| livetime | 4998.109677039 |
| ontime0 | 2216.6108130217 |
| ontime1 | 2295.3133924752 |
| ontime2 | 2149.5078022778 |
| ontime3 | 2155.8256325424 |
| ontime6 | 2360.2161026597 |
| ontime7 | 5062.210433647 |
| l2events | 1262562 |

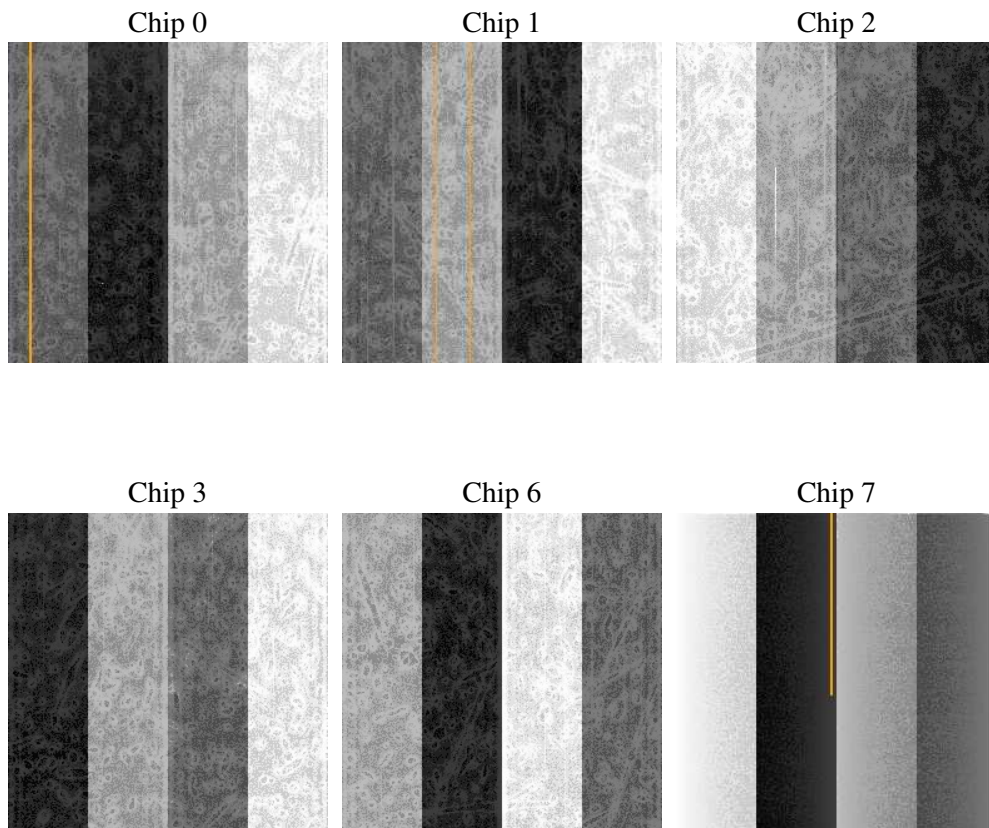
2 OBI

2.1 OBI

2.1.1 Images



2.1.2 Bias



2.1.3 Parameters

| | |
|----------|---------------------|
| obi_num | 0 |
| ascdsver | 7.6.10 |
| caldbver | 3.4.0 |
| date | 2007-06-02T13:08:37 |
| revision | 3 |

| | |
|----------------|-----------------|
| sched_exp_time | 0.0 |
| ontime | 5062.210433647 |
| ontime0 | 2216.6108130217 |
| ontime1 | 2295.3133924752 |
| ontime2 | 2149.5078022778 |
| ontime3 | 2155.8256325424 |
| ontime6 | 2360.2161026597 |
| ontime7 | 5062.210433647 |
| l1events | 1432289 |

2.1.4 Events

| | ccd 0 | ccd 1 | ccd 2 | ccd 3 | ccd 6 | ccd 7 |
|-----------------|--------|--------|--------|--------|--------|--------|
| level 1 events | 193095 | 199760 | 190312 | 192030 | 217925 | 439167 |
| rejected events | 17623 | 17728 | 17927 | 18278 | 19811 | 25009 |
| rejected % | 9% | 8% | 9% | 9% | 9% | 5% |

| | ccd 0 | ccd 1 | ccd 2 | ccd 3 | ccd 6 | ccd 7 |
|----------------|-------|--------|-------|-------|--------|--------|
| grade 0 events | 96744 | 100813 | 96162 | 97205 | 108365 | 107182 |
| | 50% | 50% | 50% | 50% | 49% | 24% |
| grade 1 events | 503 | 541 | 518 | 525 | 554 | 270 |
| | 0% | 0% | 0% | 0% | 0% | 0% |
| grade 2 events | 30962 | 31822 | 30219 | 30450 | 34224 | 92436 |
| | 16% | 15% | 15% | 15% | 15% | 21% |
| grade 3 events | 11050 | 11704 | 10949 | 11080 | 12336 | 42293 |
| | 5% | 5% | 5% | 5% | 5% | 9% |
| grade 4 events | 11273 | 11677 | 10983 | 11046 | 12274 | 42079 |
| | 5% | 5% | 5% | 5% | 5% | 9% |
| grade 5 events | 1354 | 1398 | 1301 | 1309 | 1596 | 5479 |
| | 0% | 0% | 0% | 0% | 0% | 1% |
| grade 6 events | 25689 | 26397 | 24309 | 24201 | 31178 | 130405 |
| | 13% | 13% | 12% | 12% | 14% | 29% |
| grade 7 events | 15520 | 15408 | 15871 | 16214 | 17398 | 19023 |
| | 8% | 7% | 8% | 8% | 7% | 4% |

2.2 Compared Parameters

| Parameter | Planned | Actual | Parameter | Planned | Actual |
|-----------------------------------|---------------------|----------------------|---------------------------------|-----------|---------|
| Instrument | ACIS | ACIS | Obspar format version number | 6 | 6 |
| Detector | ACIS-012367 | ACIS-012367 | Obspar file type | PREDICTED | ACTUAL |
| Grating | NONE | NONE | Obspar update status | NONE | UPDATED |
| Data mode | FAINT | FAINT | On-chip summing requested | N | N |
| Observation mode | SECONDARY | SECONDARY | Subarray requested | NONE | NONE |
| Pointing RA | 0 | 180.8434900775378 | Alternating exposures requested | N | N |
| Pointing Dec | 0 | -41.86835516107928 | Primary exposure time | 0.000000 | 3.2 |
| Pointing Roll | 0.0 | 227.8330640441982 | | | |
| SIM focus pos (mm) | -0.782348 | -0.6828225247311905 | | | |
| SIM defocus (mm) | 0 | 0.8505141146731063 | | | |
| SIM translation stage pos (mm) | -233.592463 | 250.466033080201 | | | |
| SIM translation stage offset (mm) | 0 | -0.01005468664627074 | | | |
| Observation start time | 81548223.01000001 | 81548222.241623 | | | |
| Observation start date | 2000-08-01T20:17:03 | 2000-08-01T20:17:02 | | | |
| Observation end time | 81597133.962 | 81597133.193443 | | | |
| Observation end date | 2000-08-02T09:52:14 | 2000-08-02T09:52:13 | | | |
| Read mode | TIMED | TIMED | | | |

2.3 Star Slots

2.4 FID Slots

A Summary

A.1 Status

| | |
|----------------------------|-------------|
| V&V Scientist | Doug Morgan |
| V&V Date (YYYY-MM-DD) | 2007.06.03 |
| V&V Edition | 1 |
| V&V Disposition and Status | OK |
| V&V Charge Time | 5.06221043 |

A.2 Comments