

V&V Reference Report

L2 ASCDS Version : 8.4.5

Observation 61961 - L2 Version 3
Chandra X-Ray Center

L2 Processing Date : Aug 31 2012

Contents

1	Front	2
2	OBI	3
2.1	OBI	3
2.1.1	Images	3
2.1.2	Bias	3
2.1.3	Parameters	4
2.1.4	Events	4
2.2	Compared Parameters	5
2.3	Star Slots	6
2.4	FID Slots	6
A	Summary	7
A.1	Status	7
A.2	Comments	7

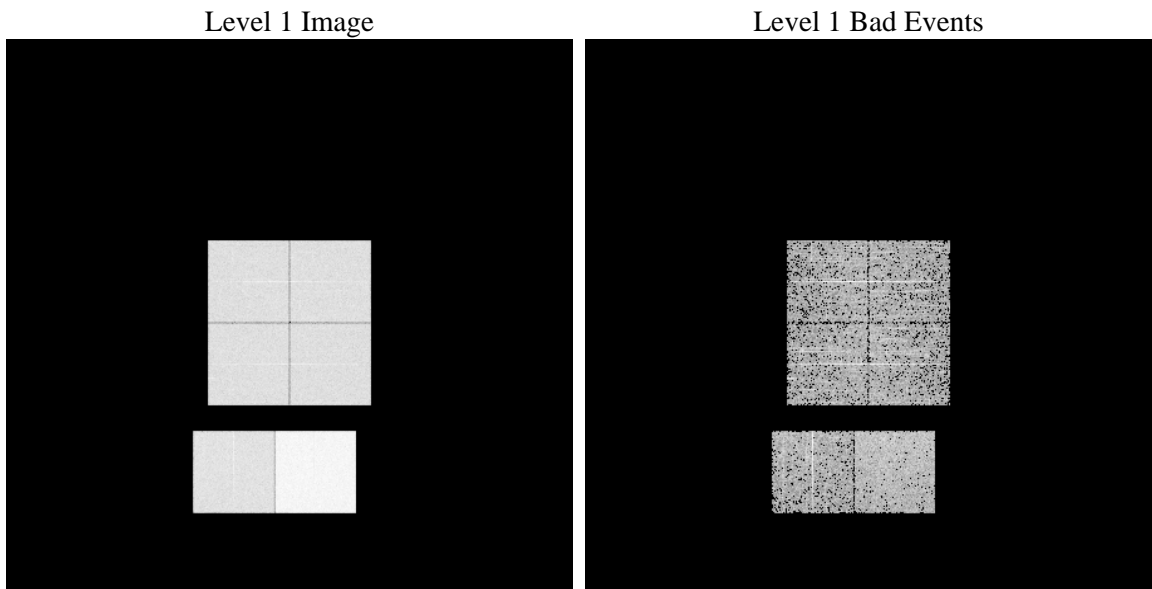
1 Front

seq_num	 	Sequence number
obs_id	61961	Observation id
title	ACIS-012367 diagnostics	Proposal title
observer	CHANDRA engineering request/realtime commanding	Principal investig
object	 	Source name
dtcycle	0	
cycle	P	events from which exps? Prim/Second/Both
ra_targ	0.0	Observer's specified target RA [deg]
dec_targ	0.0	Observer's specified target Dec [deg]
ra_nom	6.469083585594	Nominal RA [deg]
dec_nom	38.275533627316	Nominal Dec [deg]
roll_nom	136.53520715325	Nominal Roll [deg]
revision	3	Processing version of data
ontime	4027.07600981	Sum of GTIs [s]
livetime	3976.0827485597	Livetime [s]
ontime0	1777.8208135664	Sum of GTIs [s]
ontime1	1794.784024775	Sum of GTIs [s]
ontime2	1762.4151832759	Sum of GTIs [s]
ontime3	1748.6512642205	Sum of GTIs [s]
ontime6	1895.3386336565	Sum of GTIs [s]
ontime7	4027.07600981	Sum of GTIs [s]
l2events	997079	Number of level 2 events

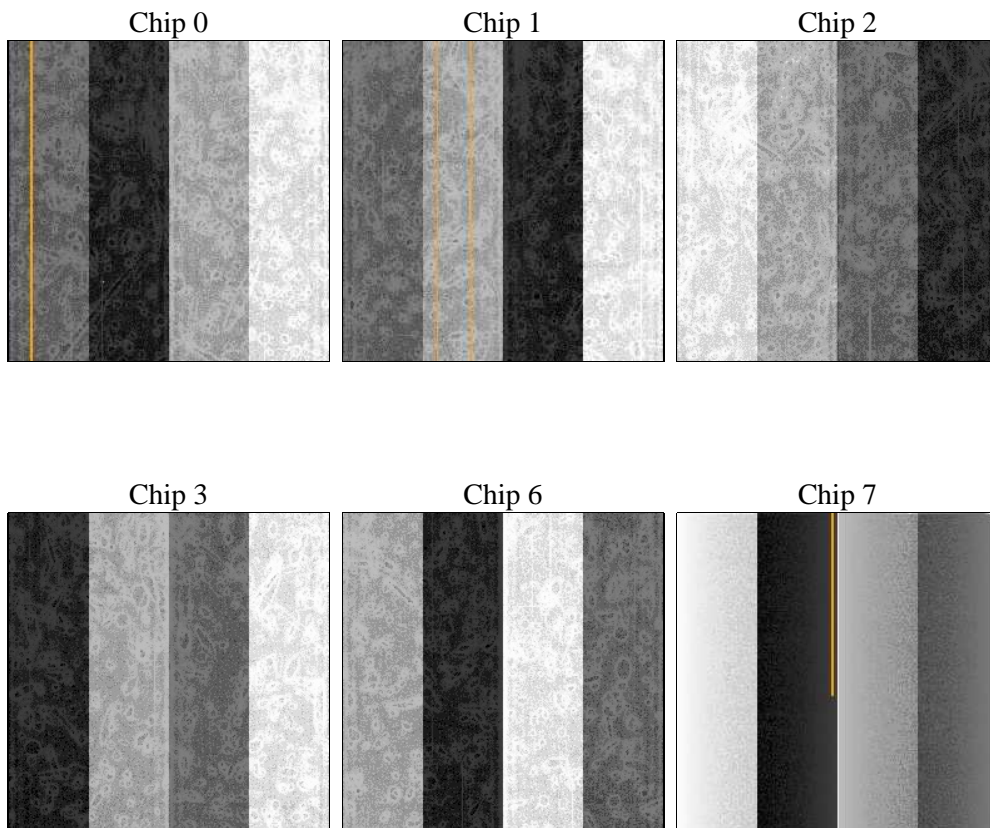
2 OBI

2.1 OBI

2.1.1 Images



2.1.2 Bias



2.1.3 Parameters

obi_num	0	Obi number	sched_exp_time	0.0	[s] Scheduled observation exposure time
ascdsver	8.4.5	Processing system revision	ontime	4027.07600981	Sum of GTIs [s]
caldsver	4.5.1.1	 	ontime0	1777.8208135664	Sum of GTIs [s]
date	2012-09-01T01:22:10	Date and time of file creation	ontime1	1794.784024775	Sum of GTIs [s]
revision	3	Processing version of data	ontime2	1762.4151832759	Sum of GTIs [s]
			ontime3	1748.6512642205	Sum of GTIs [s]
			ontime6	1895.3386336565	Sum of GTIs [s]
			ontime7	4027.07600981	Sum of GTIs [s]
			l1events	1127875	Number of level 1 events

2.1.4 Events

	ccd 0	ccd 1	ccd 2	ccd 3	ccd 6	ccd 7		ccd 0	ccd 1	ccd 2	ccd 3	ccd 6	ccd 7
level 1 events	153133	154379	154733	152418	170657	342555	grade 0 events	76979	77548	78313	77401	85405	83211
rejected events	13676	13404	14148	13976	14369	18842		50%	50%	50%	50%	50%	24%
rejected %	8%	8%	9%	9%	8%	5%	grade 1 events	394	375	393	408	387	214
								0%	0%	0%	0%	0%	0%
							grade 2 events	24456	24780	24716	24122	27077	71547
								15%	16%	15%	15%	15%	20%
							grade 3 events	8890	8928	8799	8804	9633	33188
								5%	5%	5%	5%	5%	9%
							grade 4 events	8778	9078	8933	8751	9663	33100
								5%	5%	5%	5%	5%	9%
							grade 5 events	1063	1071	1027	1020	1217	4323
								0%	0%	0%	0%	0%	1%
							grade 6 events	20354	20641	19824	19364	24510	102667
								13%	13%	12%	12%	14%	29%
							grade 7 events	12219	11958	12728	12548	12765	14305
								7%	7%	8%	8%	7%	4%

2.2 Compared Parameters

Parameter	Planned	Actual	Parameter	Planned	Actual
Instrument	ACIS	ACIS	Obspar format version number	7	7
Detector	ACIS-012367	ACIS-012367	Obspar file type	PREDICTED	ACTUAL
Grating	NONE	NONE	Obspar update status	NONE	UPDATED
Data mode	FAINT	FAINT	On-chip summing requested	N	N
Observation mode	SECONDARY	SECONDARY	Subarray requested	NONE	NONE
[deg] Pointing RA	0	6.469083585593981	Alternating exposures requested	N	N
[deg] Pointing Dec	0	38.27553362731559	[s] Primary exposure time	0.000000	3.2
[deg] Pointing Roll	0.0	136.5352071532539			
[mm] SIM focus pos	-0.782348	-0.6828225247311905			
[mm] SIM defocus	0	0.8505141146731063			
[mm] SIM translation stage pos	-233.592463	250.466033080201			
[mm] SIM translation stage offset	0	-0.01005468664627074			
[s] Observation start time (MET)	82920696.01100001	82920695.242854			
Observation start date	2000-08-17T17:31:36	2000-08-17T17:31:35			
[s] Observation end time (MET)	82967315.06299999	82967314.29460099			
Observation end date	2000-08-18T06:28:35	2000-08-18T06:28:34			
Read mode	TIMED	TIMED			

2.3 Star Slots

2.4 FID Slots

A Summary

A.1 Status

V&V Scientist	Beth Sundheim
V&V Date (YYYY-MM-DD)	2012.09.06
V&V Edition	1
V&V Disposition and Status	OK
V&V Charge Time	4.02707600981

A.2 Comments