

V&V Reference Report

L2 ASCDS Version : 7.6.10

Observation 61959 - L2 Version 001
Chandra X-Ray Center

L2 Processing Date : Jun 5 2007

Contents

1	Front	2
2	OBI	3
2.1	OBI	3
2.1.1	Images	3
2.1.2	Bias	3
2.1.3	Parameters	4
2.1.4	Events	4
2.2	Compared Parameters	5
2.3	Star Slots	6
2.4	FID Slots	6
A	Summary	7
A.1	Status	7
A.2	Comments	7

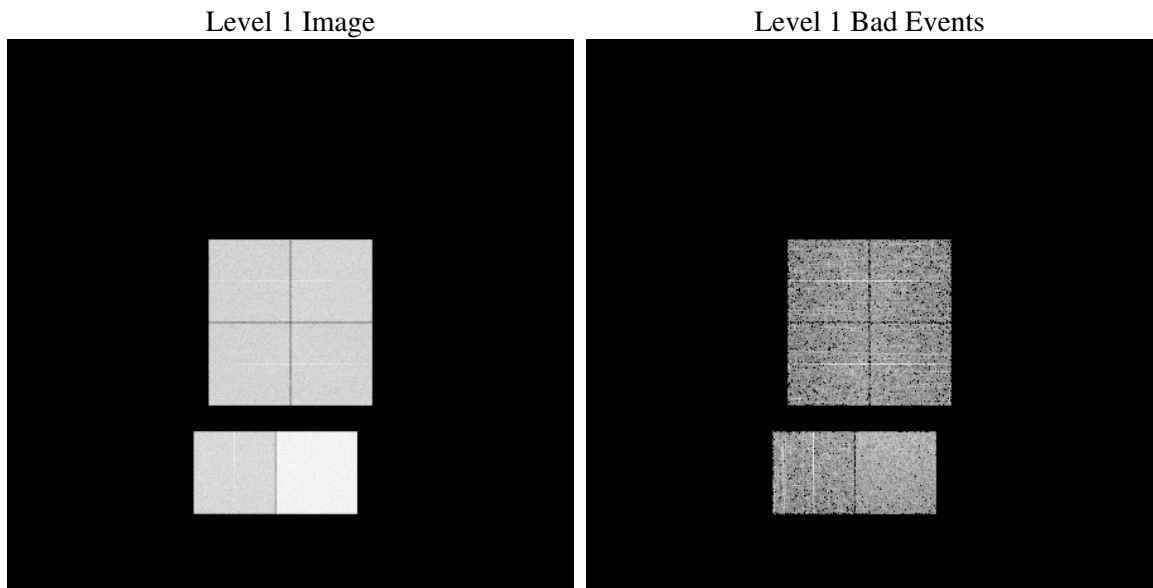
1 Front

seq_num	
obs_id	61959
title	ACIS-012367 diagnostics
observer	CHANDRA engineering request/realtime commanding
object	
dtcycle	0
cycle	P
ra_targ	0.0
dec_targ	0.0
ra_nom	6.4688665225803
dec_nom	38.274679658881
roll_nom	138.2540105417
revision	2
ontime	5162.1570931971
livetime	5096.7907518052
ontime0	2225.8508225977
ontime1	2313.3998426944
ontime2	2190.2812333256
ontime3	2206.3224528283
ontime6	2420.4361727238
ontime7	5162.1570931971
l2events	1262014

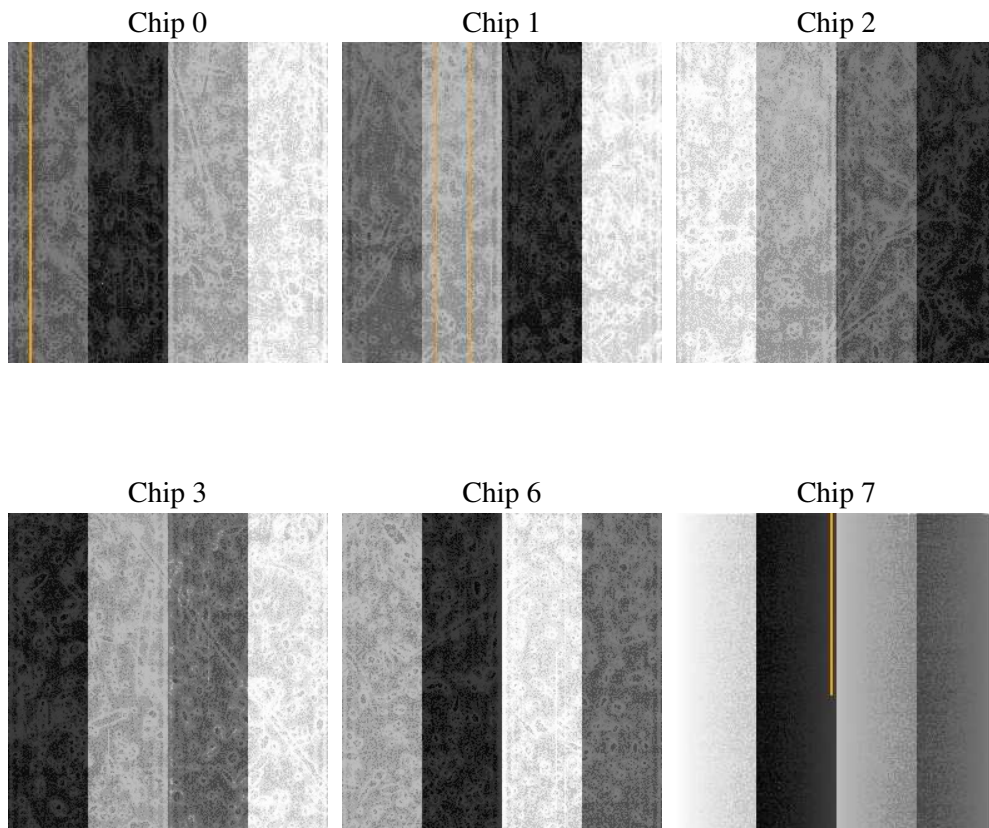
2 OBI

2.1 OBI

2.1.1 Images



2.1.2 Bias



2.1.3 Parameters

obi_num	0
ascdsver	7.6.10
caldbver	3.4.0
date	2007-06-05T13:21:17
revision	2

sched_exp_time	0.0
ontime	5162.1570931971
ontime0	2225.8508225977
ontime1	2313.3998426944
ontime2	2190.2812333256
ontime3	2206.3224528283
ontime6	2420.4361727238
ontime7	5162.1570931971
l1events	1431240

2.1.4 Events

	ccd 0	ccd 1	ccd 2	ccd 3	ccd 6	ccd 7
level 1 events	190553	198533	190647	192444	218459	440604
rejected events	17553	17245	17502	18606	19963	25439
rejected %	9%	8%	9%	9%	9%	5%

	ccd 0	ccd 1	ccd 2	ccd 3	ccd 6	ccd 7
grade 0 events	95823	100187	96616	97536	108852	107917
	50%	50%	50%	50%	49%	24%
grade 1 events	517	521	478	519	530	300
	0%	0%	0%	0%	0%	0%
grade 2 events	30137	31762	30331	30484	34135	92968
	15%	15%	15%	15%	15%	21%
grade 3 events	11008	11495	10824	10968	12183	42846
	5%	5%	5%	5%	5%	9%
grade 4 events	10957	11503	10844	10994	12310	42480
	5%	5%	5%	5%	5%	9%
grade 5 events	1366	1387	1315	1322	1588	5837
	0%	0%	0%	0%	0%	1%
grade 6 events	25075	26341	24530	23856	31016	128954
	13%	13%	12%	12%	14%	29%
grade 7 events	15670	15337	15709	16765	17845	19302
	8%	7%	8%	8%	8%	4%

2.2 Compared Parameters

Parameter	Planned	Actual	Parameter	Planned	Actual
Instrument	ACIS	ACIS	Obspar format version number	6	6
Detector	ACIS-012367	ACIS-012367	Obspar file type	PREDICTED	ACTUAL
Grating	NONE	NONE	Obspar update status	NONE	UPDATED
Data mode	FAINT	FAINT	On-chip summing requested	N	N
Observation mode	SECONDARY	SECONDARY	Subarray requested	NONE	NONE
Pointing RA	0	6.468866522580309	Alternating exposures requested	N	N
Pointing Dec	0	38.27467965888129	Primary exposure time	3.2	3.2
Pointing Roll	0.0	138.2540105417018			
SIM focus pos (mm)	-0.782348	-0.7809083437167272			
SIM defocus (mm)	0	0.7524282956875696			
SIM translation stage pos (mm)	-233.592463	250.4635187648994			
SIM translation stage offset (mm)	0	-0.007540371344731511			
Observation start time	83147803.21982899	83147802.451363			
Observation start date	2000-08-20T08:36:43	2000-08-20T08:36:42			
Observation end time	83191072.57145	83191071.802984			
Observation end date	2000-08-20T20:37:53	2000-08-20T20:37:51			
Read mode	TIMED	TIMED			

2.3 Star Slots

2.4 FID Slots

A Summary

A.1 Status

V&V Scientist	Jen Lauer
V&V Date (YYYY-MM-DD)	2007.06.05
V&V Edition	1
V&V Disposition and Status	OK
V&V Charge Time	5.16215709

A.2 Comments