

# V&V Reference Report

## L2 ASCDS Version : 7.6.10

Observation 61954 - L2 Version 001  
Chandra X-Ray Center

L2 Processing Date : Jun 5 2007

## Contents

<b>1</b>	<b>Front</b>	<b>2</b>
<b>2</b>	<b>OBI</b>	<b>3</b>
2.1	OBI . . . . .	3
2.1.1	Images . . . . .	3
2.1.2	Bias . . . . .	3
2.1.3	Parameters . . . . .	4
2.1.4	Events . . . . .	4
2.2	Compared Parameters . . . . .	5
2.3	Star Slots . . . . .	6
2.4	FID Slots . . . . .	6
<b>A</b>	<b>Summary</b>	<b>7</b>
A.1	Status . . . . .	7
A.2	Comments . . . . .	7

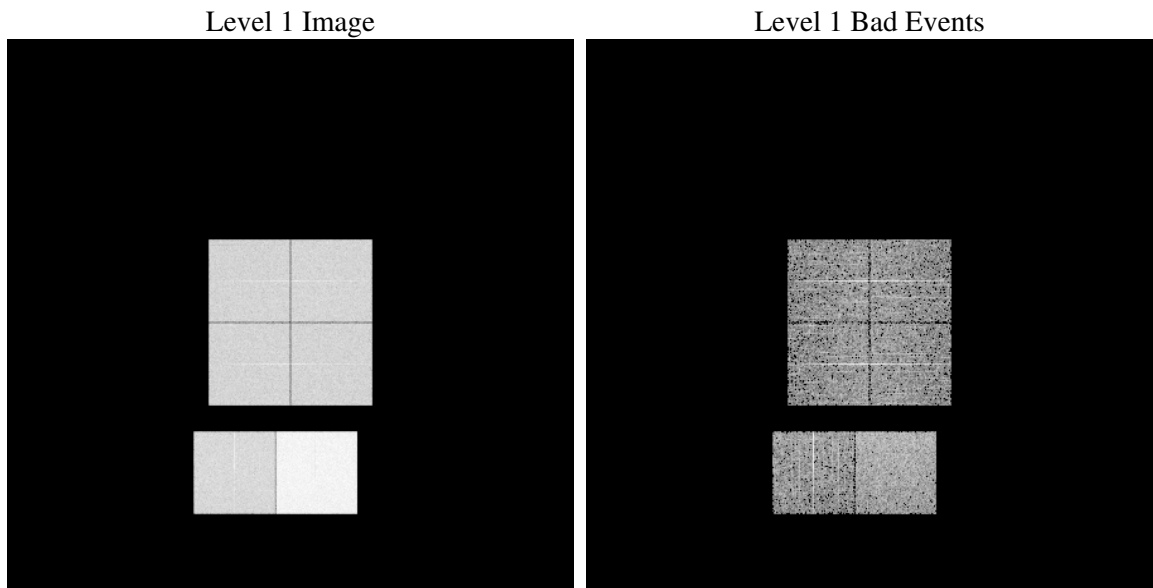
# 1 Front

seq_num	&#160
obs_id	61954
title	ACIS-012367 diagnostics
observer	CHANDRA engineering request/realtime commanding
object	&#160
dtcycle	0
cycle	P
ra_targ	0.0
dec_targ	0.0
ra_nom	176.82887615457
dec_nom	-44.384450701668
roll_nom	205.88454107443
revision	3
ontime	5211.2836444974
livetime	5145.2952331325
ontime0	2239.3283721507
ontime1	2307.4311422557
ontime2	2239.2580109388
ontime3	2219.8001220226
ontime6	2420.7558217198
ontime7	5211.2836444974
l2events	1264109

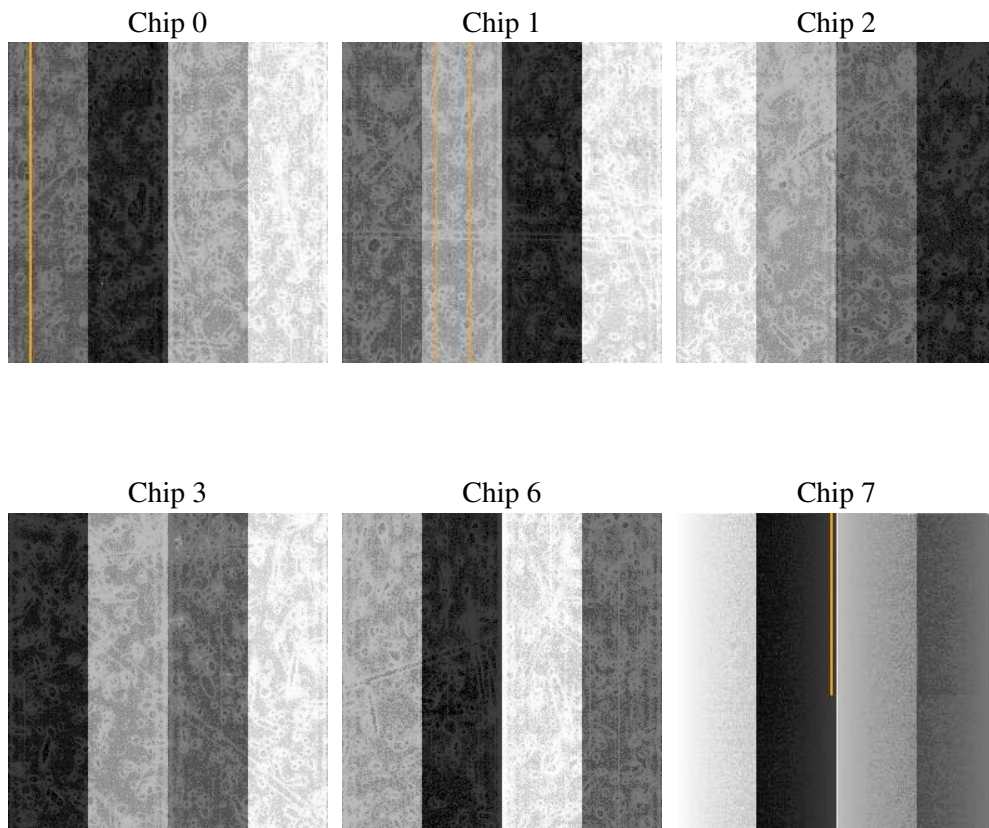
## 2 OBI

### 2.1 OBI

#### 2.1.1 Images



#### 2.1.2 Bias



### 2.1.3 Parameters

obi_num	0
ascdsver	7.6.10
caldbver	3.4.0
date	2007-06-05T14:00:27
revision	3

sched_exp_time	0.0
ontime	5211.2836444974
ontime0	2239.3283721507
ontime1	2307.4311422557
ontime2	2239.2580109388
ontime3	2219.8001220226
ontime6	2420.7558217198
ontime7	5211.2836444974
l1events	1431612

### 2.1.4 Events

	ccd 0	ccd 1	ccd 2	ccd 3	ccd 6	ccd 7
level 1 events	190897	196278	193687	192019	216881	441850
rejected events	17199	17216	17499	17700	19014	25873
rejected %	9%	8%	9%	9%	8%	5%

	ccd 0	ccd 1	ccd 2	ccd 3	ccd 6	ccd 7
grade 0 events	96213	99166	98559	98004	108208	107860
	50%	50%	50%	51%	49%	24%
grade 1 events	501	476	528	541	530	295
	0%	0%	0%	0%	0%	0%
grade 2 events	30457	31482	30773	30298	34142	92770
	15%	16%	15%	15%	15%	20%
grade 3 events	10960	11322	11058	11033	12342	42734
	5%	5%	5%	5%	5%	9%
grade 4 events	10854	11166	10977	10925	12462	42457
	5%	5%	5%	5%	5%	9%
grade 5 events	1401	1406	1344	1389	1627	5892
	0%	0%	0%	0%	0%	1%
grade 6 events	25214	25926	24821	24059	30713	130156
	13%	13%	12%	12%	14%	29%
grade 7 events	15297	15334	15627	15770	16857	19686
	8%	7%	8%	8%	7%	4%

## 2.2 Compared Parameters

Parameter	Planned	Actual	Parameter	Planned	Actual
Instrument	ACIS	ACIS	Obspar format version number	6	6
Detector	ACIS-012367	ACIS-012367	Obspar file type	PREDICTED	ACTUAL
Grating	NONE	NONE	Obspar update status	NONE	UPDATED
Data mode	FAINT	FAINT	On-chip summing requested	N	N
Observation mode	SECONDARY	SECONDARY	Subarray requested	NONE	NONE
Pointing RA	0	176.8288761545695	Alternating exposures requested	N	N
Pointing Dec	0	-44.38445070166816	Primary exposure time	3.2	3.2
Pointing Roll	0.0	205.8845410744296			
SIM focus pos (mm)	-0.782348	-0.6828225247311905			
SIM defocus (mm)	0	0.8505141146731063			
SIM translation stage pos (mm)	-233.592463	250.466033080201			
SIM translation stage offset (mm)	0	-0.01005468664627074			
Observation start time	83604688.786955	83604688.018489			
Observation start date	2000-08-25T15:31:29	2000-08-25T15:31:28			
Observation end time	83652158.588735	83652157.820271			
Observation end date	2000-08-26T04:42:39	2000-08-26T04:42:37			
Read mode	TIMED	TIMED			

## **2.3 Star Slots**

## **2.4 FID Slots**

## A Summary

### A.1 Status

V&V Scientist	Jen Lauer
V&V Date (YYYY-MM-DD)	2007.06.05
V&V Edition	1
V&V Disposition and Status	OK
V&V Charge Time	5.21128364

### A.2 Comments