

# V&V Reference Report

## L2 ASCDS Version : 8.4.5

Observation 61951 - L2 Version 3  
Chandra X-Ray Center

L2 Processing Date : Sep 1 2012

## Contents

<b>1</b>	<b>Front</b>	<b>2</b>
<b>2</b>	<b>OBI</b>	<b>3</b>
2.1	OBI . . . . .	3
2.1.1	Images . . . . .	3
2.1.2	Bias . . . . .	3
2.1.3	Parameters . . . . .	4
2.1.4	Events . . . . .	4
2.2	Compared Parameters . . . . .	5
2.3	Star Slots . . . . .	6
2.4	FID Slots . . . . .	6
<b>A</b>	<b>Summary</b>	<b>7</b>
A.1	Status . . . . .	7
A.2	Comments . . . . .	7

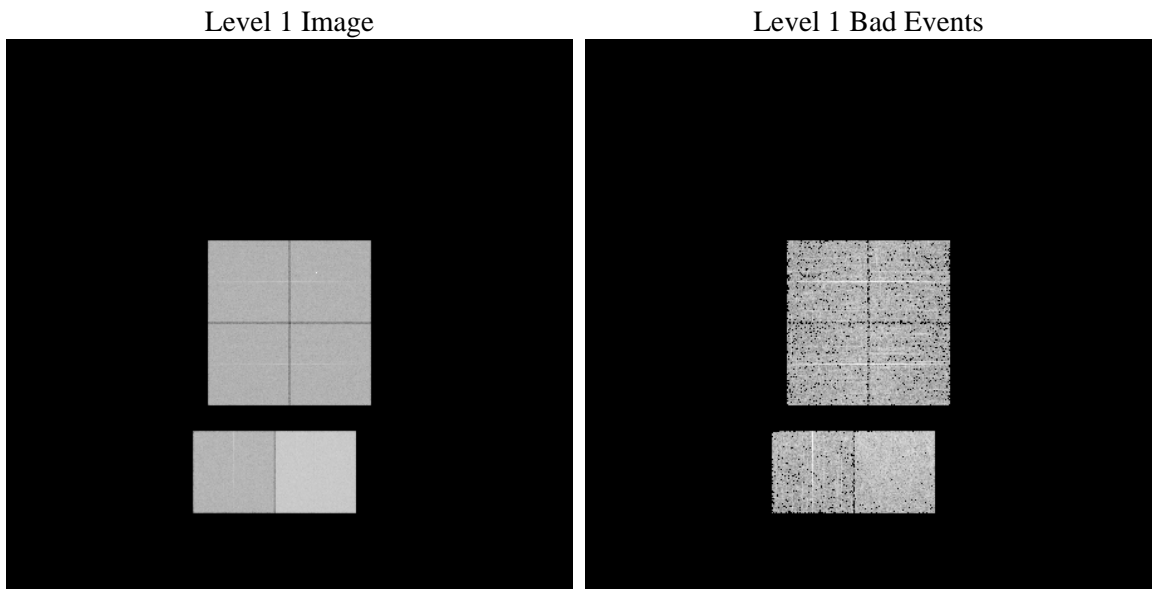
# 1 Front

seq_num	&#160	Sequence number
obs_id	61951	Observation id
title	ACIS-012367 diagnostics	Proposal title
observer	CHANDRA engineering request/realtime commanding	Principal investig
object	&#160	Source name
dtcycle	0	&#160
cycle	P	events from which exps? Prim/Second/Both
ra_targ	0.0	Observer's specified target RA [deg]
dec_targ	0.0	Observer's specified target Dec [deg]
ra_nom	176.82747243576	Nominal RA [deg]
dec_nom	-44.383811998785	Nominal Dec [deg]
roll_nom	203.52702353759	Nominal Roll [deg]
revision	3	Processing version of data
ontime	5259.3581549823	Sum of GTIs [s]
livetime	5192.7609952187	Livetime [s]
ontime0	2274.3575582206	Sum of GTIs [s]
ontime1	2278.4490901083	Sum of GTIs [s]
ontime2	2197.4233195931	Sum of GTIs [s]
ontime3	2233.0749788284	Sum of GTIs [s]
ontime6	2417.8138096929	Sum of GTIs [s]
ontime7	5259.3581549823	Sum of GTIs [s]
l2events	1262048	Number of level 2 events

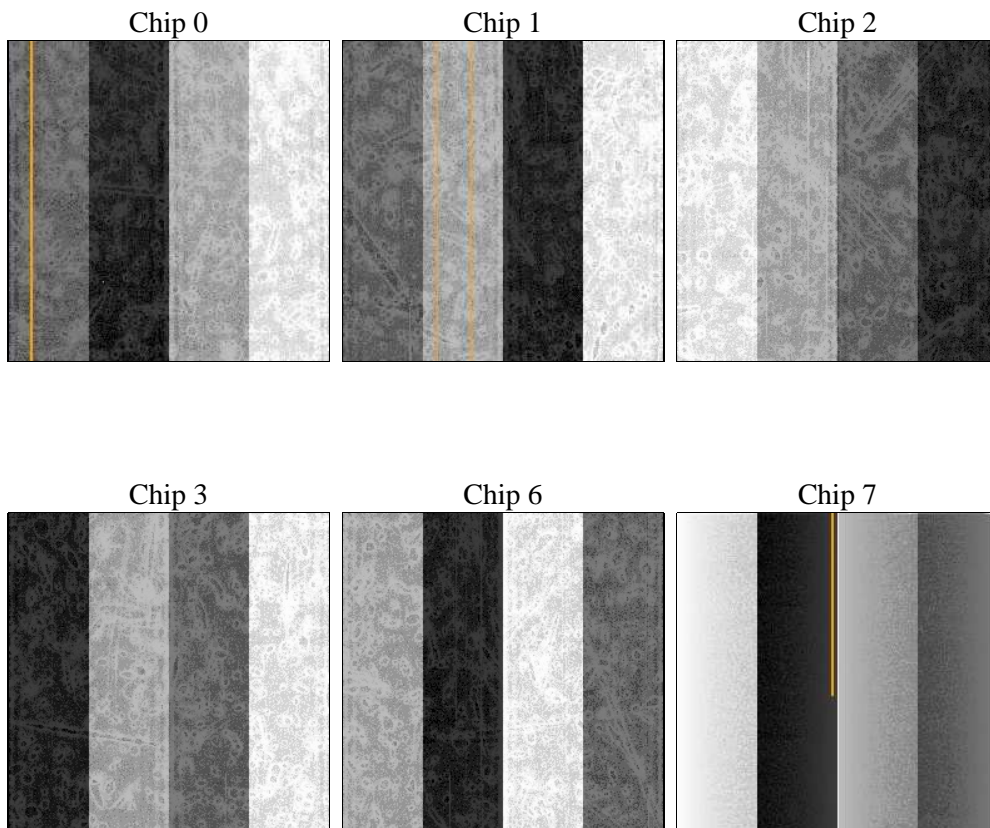
## 2 OBI

### 2.1 OBI

#### 2.1.1 Images



#### 2.1.2 Bias



### 2.1.3 Parameters

obi_num	0	Obi number	sched_exp_time	0.0	[s] Scheduled observation exposure time
ascdsver	8.4.5	Processing system revision	ontime	5259.3581549823	Sum of GTIs [s]
caldsver	4.5.1.1	&#160	ontime0	2274.3575582206	Sum of GTIs [s]
date	2012-09-01T06:02:48	Date and time of file creation	ontime1	2278.4490901083	Sum of GTIs [s]
revision	3	Processing version of data	ontime2	2197.4233195931	Sum of GTIs [s]
			ontime3	2233.0749788284	Sum of GTIs [s]
			ontime6	2417.8138096929	Sum of GTIs [s]
			ontime7	5259.3581549823	Sum of GTIs [s]
			l1events	1430754	Number of level 1 events

### 2.1.4 Events

	ccd 0	ccd 1	ccd 2	ccd 3	ccd 6	ccd 7		ccd 0	ccd 1	ccd 2	ccd 3	ccd 6	ccd 7
level 1 events	193093	194182	189571	193668	215592	444648	grade 0 events	96780	97663	95589	98348	107497	108456
rejected events	17596	17668	17570	18154	18772	25494		50%	50%	50%	50%	49%	24%
rejected %	9%	9%	9%	9%	8%	5%	grade 1 events	536	499	487	563	523	287
								0%	0%	0%	0%	0%	0%
							grade 2 events	30913	30907	30069	30683	33824	94133
								16%	15%	15%	15%	15%	21%
							grade 3 events	11214	11145	10845	11123	12188	43170
								5%	5%	5%	5%	5%	9%
							grade 4 events	11200	11308	10746	11142	12145	42682
								5%	5%	5%	5%	5%	9%
							grade 5 events	1361	1415	1333	1377	1486	5862
								0%	0%	0%	0%	0%	1%
							grade 6 events	25390	25491	24752	24218	31166	130713
								13%	13%	13%	12%	14%	29%
							grade 7 events	15699	15754	15750	16214	16763	19345
								8%	8%	8%	8%	7%	4%

## 2.2 Compared Parameters

Parameter	Planned	Actual
Instrument	ACIS	ACIS
Detector	ACIS-012367	ACIS-012367
Grating	NONE	NONE
Data mode	FAINT	FAINT
Observation mode	SECONDARY	SECONDARY
[deg] Pointing RA	0	176.8274724357578
[deg] Pointing Dec	0	-44.38381199878462
[deg] Pointing Roll	0.0	203.527023537593
[mm] SIM focus pos	-0.782348	-0.6828225247311905
[mm] SIM defocus	0	0.8505141146731063
[mm] SIM translation stage pos	-233.592463	250.466033080201
[mm] SIM translation stage offset	0	-0.01005468664627074
[s] Observation start time (MET)	83833581.546	83833580.777079
Observation start date	2000-08-28T07:06:22	2000-08-28T07:06:20
[s] Observation end time (MET)	83876436.79700001	83876436.028687
Observation end date	2000-08-28T19:00:37	2000-08-28T19:00:36
Read mode	TIMED	TIMED

Parameter	Planned	Actual
Obspar format version number	7	7
Obspar file type	PREDICTED	ACTUAL
Obspar update status	NONE	UPDATED
On-chip summing requested	N	N
Subarray requested	NONE	NONE
Alternating exposures requested	N	N
[s] Primary exposure time	0.000000	3.2

## **2.3 Star Slots**

## **2.4 FID Slots**

## A Summary

### A.1 Status

V&V Scientist	Beth Sundheim
V&V Date (YYYY-MM-DD)	2012.09.07
V&V Edition	1
V&V Disposition and Status	OK
V&V Charge Time	5.2593581549823

### A.2 Comments