

V&V Reference Report

L2 ASCDS Version : 7.6.10

Observation 61924 - L2 Version 001
Chandra X-Ray Center

L2 Processing Date : Jun 8 2007

Contents

1	Front	2
2	OBI	3
2.1	OBI	3
2.1.1	Images	3
2.1.2	Bias	3
2.1.3	Parameters	4
2.1.4	Events	4
2.2	Compared Parameters	5
2.3	Star Slots	6
2.4	FID Slots	6
A	Summary	7
A.1	Status	7
A.2	Comments	7

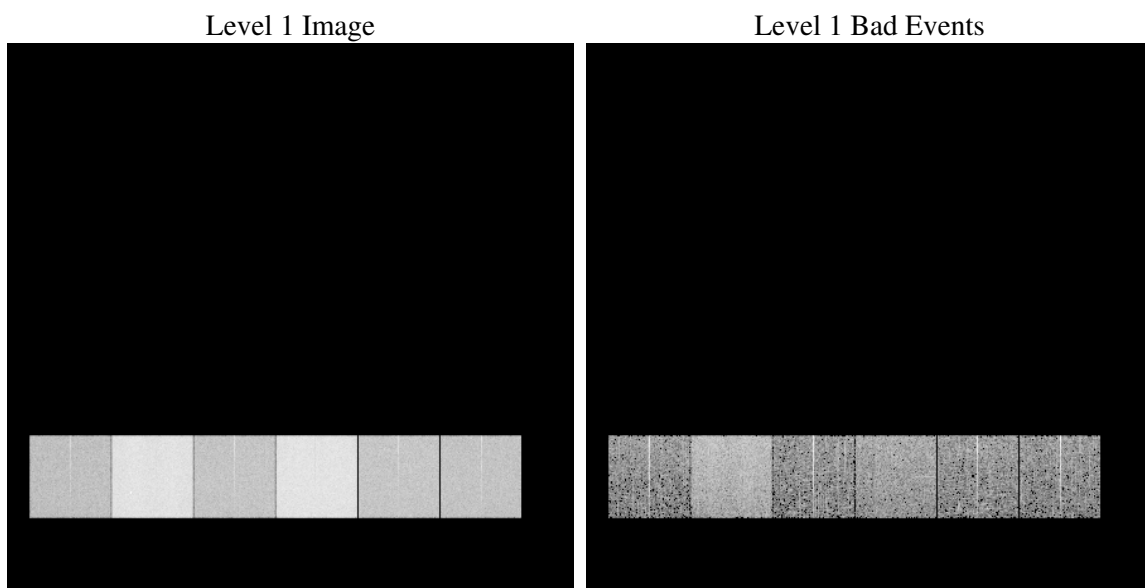
1 Front

seq_num	
obs_id	61924
title	ACIS-456789 diagnostics
observer	CHANDRA engineering request/realtime commanding
object	
dtcycle	0
cycle	P
ra_targ	0.0
dec_targ	0.0
ra_nom	14.918144483113
dec_nom	32.906337393872
roll_nom	144.66112665305
revision	3
ontime	5006.6903499216
livetime	4943.2926220439
ontime4	2008.8748046458
ontime5	5372.960496217
ontime6	2157.9214148074
ontime7	5006.6903499216
ontime8	2200.1370246857
ontime9	2131.870084554
l2events	1346761

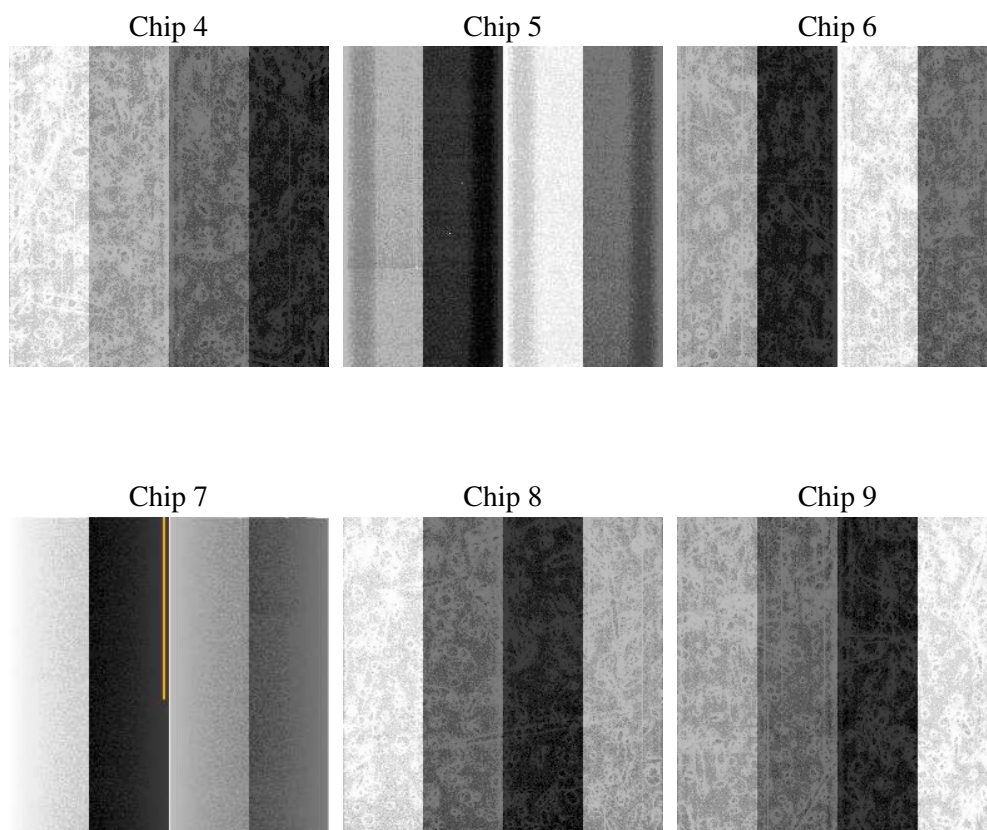
2 OBI

2.1 OBI

2.1.1 Images



2.1.2 Bias



2.1.3 Parameters

obi_num	1
ascdsver	7.6.10
caldsver	3.4.0
date	2007-06-08T14:17:04
revision	3

sched_exp_time	0.0
ontime	5006.6903499216
ontime4	2008.8748046458
ontime5	5372.960496217
ontime6	2157.9214148074
ontime7	5006.6903499216
ontime8	2200.1370246857
ontime9	2131.870084554
l1events	1553009

2.1.4 Events

	ccd 4	ccd 5	ccd 6	ccd 7	ccd 8	ccd 9
level 1 events	164601	404179	189513	417567	195536	181613
rejected events	19975	44012	20211	26381	20781	19498
rejected %	12%	10%	10%	6%	10%	10%

	ccd 4	ccd 5	ccd 6	ccd 7	ccd 8	ccd 9
grade 0 events	76448	78554	90304	99687	95773	87855
	46%	19%	47%	23%	48%	48%
grade 1 events	370	259	426	263	469	435
	0%	0%	0%	0%	0%	0%
grade 2 events	31869	138576	31853	85352	31873	30160
	19%	34%	16%	20%	16%	16%
grade 3 events	7775	21072	9864	40268	10609	9549
	4%	5%	5%	9%	5%	5%
grade 4 events	7834	20396	9865	39018	10760	9634
	4%	5%	5%	9%	5%	5%
grade 5 events	1376	8713	1511	5825	1581	1425
	0%	2%	0%	1%	0%	0%
grade 6 events	20700	101569	27416	126861	25740	24917
	12%	25%	14%	30%	13%	13%
grade 7 events	18229	35040	18274	20293	18731	17638
	11%	8%	9%	4%	9%	9%

2.2 Compared Parameters

Parameter	Planned	Actual	Parameter	Planned	Actual
Instrument	ACIS	ACIS	Obspar format version number	6	6
Detector	ACIS-456789	ACIS-456789	Obspar file type	PREDICTED	ACTUAL
Grating	NONE	NONE	Obspar update status	NONE	UPDATED
Data mode	FAINT	FAINT	On-chip summing requested	N	N
Observation mode	SECONDARY	SECONDARY	Subarray requested	NONE	NONE
Pointing RA	0	14.91814448311347	Alternating exposures requested	N	N
Pointing Dec	0	32.90633739387154	Primary exposure time	0.000000	3.2
Pointing Roll	0.0	144.6611266530451			
SIM focus pos (mm)	-0.684267	-0.6828225247311905			
SIM defocus (mm)	0	0.8505141146731063			
SIM translation stage pos (mm)	-190.132523	250.466033080201			
SIM translation stage offset (mm)	0	-0.01005468664627074			
Observation start time	85248676.09900001	85248675.33022401			
Observation start date	2000-09-13T16:11:16	2000-09-13T16:11:15			
Observation end time	85259184.399	85259183.630619			
Observation end date	2000-09-13T19:06:24	2000-09-13T19:06:23			
Read mode	TIMED	TIMED			

2.3 Star Slots

2.4 FID Slots

A Summary

A.1 Status

V&V Scientist	Jen Lauer
V&V Date (YYYY-MM-DD)	2007.06.08
V&V Edition	1
V&V Disposition and Status	OK
V&V Charge Time	5.00669034

A.2 Comments

Focal plane temperature is warmer than -118.7 C degrees during the entire observation. This temperature is the upper limit of the verified ACIS calibration for the front-illuminated chips. The focal plane temperature is warmer than -116.7 degrees C for the entire observation. This temperature is the upper limit of the verified ACIS calibration for the back-illuminated chips. The ACIS spectral response calibration is less accurate at these warmer temperatures than it is at -119.7 C. Users whose science objectives depend on the most accurate spectral response (ie: fitting line-rich spectra) may notice an effect. Users whose science objectives do not depend on the most accurate spectral response should not notice an effect.