

V&V Reference Report

L2 ASCDS Version : 7.6.10

Observation 61921 - L2 Version 001
Chandra X-Ray Center

L2 Processing Date : Jun 8 2007

Contents

1	Front	2
2	OBI	3
2.1	OBI	3
2.1.1	Images	3
2.1.2	Bias	3
2.1.3	Parameters	4
2.1.4	Events	4
2.2	Compared Parameters	5
2.3	Star Slots	6
2.4	FID Slots	6
A	Summary	7
A.1	Status	7
A.2	Comments	7

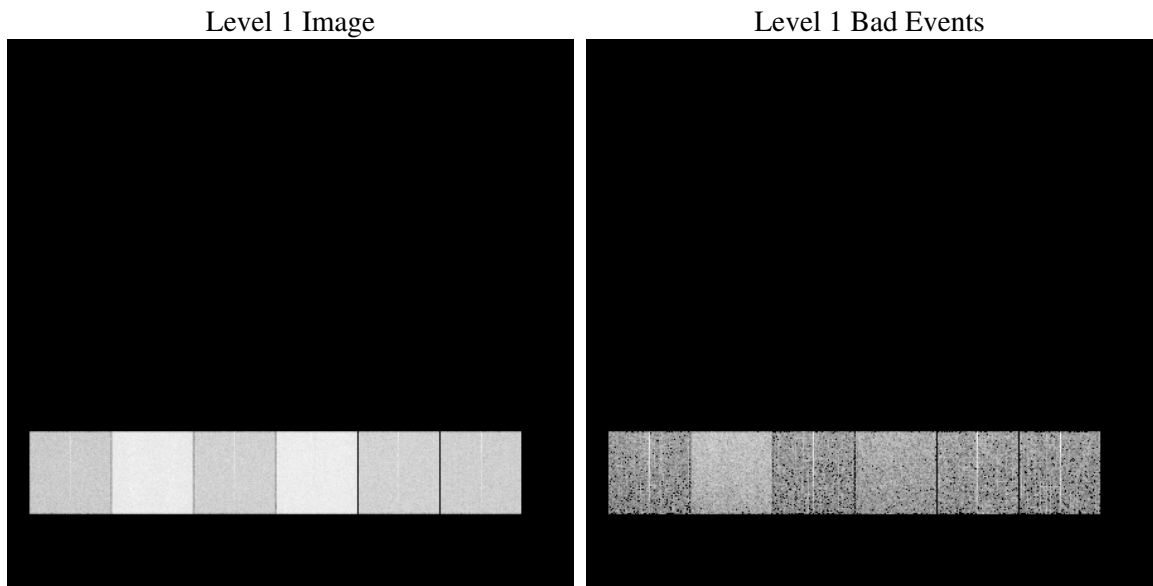
1 Front

seq_num	
obs_id	61921
title	ACIS-456789 diagnostics
observer	CHANDRA engineering request/realtime commanding
object	
dtcycle	0
cycle	P
ra_targ	0.0
dec_targ	0.0
ra_nom	14.918176732151
dec_nom	32.905074016896
roll_nom	147.12287407083
revision	3
ontime	4903.6489532888
livetime	4841.5559976193
ontime4	2074.3649548739
ontime5	5305.5699806809
ontime6	2259.0630647838
ontime7	4903.6489532888
ontime8	2304.519744575
ontime9	2197.3602547199
l2events	1361266

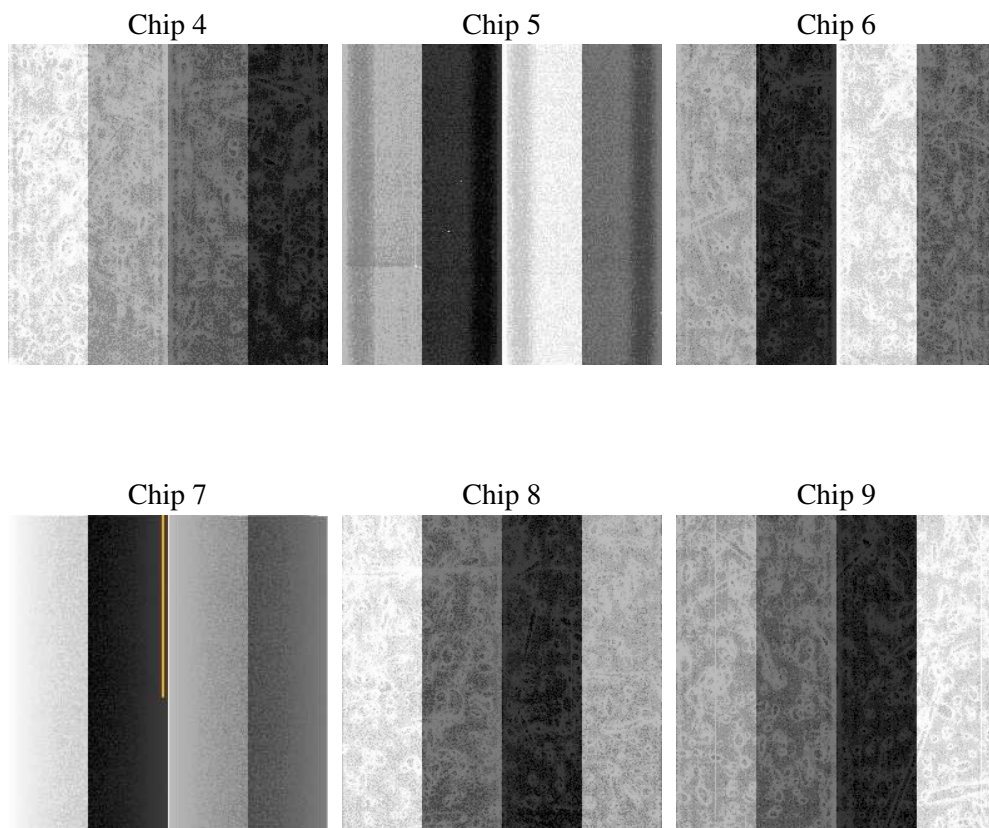
2 OBI

2.1 OBI

2.1.1 Images



2.1.2 Bias



2.1.3 Parameters

obi_num	2
ascdsver	7.6.10
caldsver	3.4.0
date	2007-06-08T14:34:35
revision	3

sched_exp_time	0.0
ontime	4903.6489532888
ontime4	2074.3649548739
ontime5	5305.5699806809
ontime6	2259.0630647838
ontime7	4903.6489532888
ontime8	2304.519744575
ontime9	2197.3602547199
l1events	1555192

2.1.4 Events

	ccd 4	ccd 5	ccd 6	ccd 7	ccd 8	ccd 9
level 1 events	170076	392294	197702	406628	202703	185789
rejected events	18262	39315	18088	23473	19892	18212
rejected %	10%	10%	9%	5%	9%	9%

	ccd 4	ccd 5	ccd 6	ccd 7	ccd 8	ccd 9
grade 0 events	85301	80732	98174	98258	100998	91846
	50%	20%	49%	24%	49%	49%
grade 1 events	431	213	411	233	462	447
	0%	0%	0%	0%	0%	0%
grade 2 events	28567	132574	31601	84229	32863	30108
	16%	33%	15%	20%	16%	16%
grade 3 events	8997	21592	10879	39329	11260	10336
	5%	5%	5%	9%	5%	5%
grade 4 events	8787	20981	10829	39019	11246	10214
	5%	5%	5%	9%	5%	5%
grade 5 events	1315	8016	1421	5388	1530	1333
	0%	2%	0%	1%	0%	0%
grade 6 events	20395	97287	28357	122573	26693	25265
	11%	24%	14%	30%	13%	13%
grade 7 events	16283	30899	16030	17599	17651	16240
	9%	7%	8%	4%	8%	8%

2.2 Compared Parameters

Parameter	Planned	Actual	Parameter	Planned	Actual
Instrument	ACIS	ACIS	Obspar format version number	6	6
Detector	ACIS-456789	ACIS-456789	Obspar file type	PREDICTED	ACTUAL
Grating	NONE	NONE	Obspar update status	NONE	UPDATED
Data mode	FAINT	FAINT	On-chip summing requested	N	N
Observation mode	SECONDARY	SECONDARY	Subarray requested	NONE	NONE
Pointing RA	0	14.91817673215126	Alternating exposures requested	N	N
Pointing Dec	0	32.90507401689638	Primary exposure time	3.2	3.2
Pointing Roll	0.0	147.1228740708278			
SIM focus pos (mm)	-0.684267	-0.6828225247311905			
SIM defocus (mm)	0	0.8505141146731063			
SIM translation stage pos (mm)	-190.132523	250.466033080201			
SIM translation stage offset (mm)	0	-0.01005468664627074			
Observation start time	85481090.75742701	85481089.98896199			
Observation start date	2000-09-16T08:44:51	2000-09-16T08:44:49			
Observation end time	85491601.107822	85491600.339357			
Observation end date	2000-09-16T11:40:01	2000-09-16T11:40:00			
Read mode	TIMED	TIMED			

2.3 Star Slots

2.4 FID Slots

A Summary

A.1 Status

V&V Scientist	Beth Sundheim
V&V Date (YYYY-MM-DD)	2007.06.10
V&V Edition	1
V&V Disposition and Status	OK
V&V Charge Time	4.90364895

A.2 Comments

Focal plane temperature is warmer than -118.7 C degrees during the first ~4 ksec of this observation. This temperature is the upper limit of the verified ACIS calibration for the front-illuminated chips.