

V&V Reference Report

L2 ASCDS Version : 7.6.10

Observation 61891 - L2 Version 001
Chandra X-Ray Center

L2 Processing Date : Jun 9 2007

Contents

1	Front	2
2	OBI	3
2.1	OBI	3
2.1.1	Images	3
2.1.2	Bias	3
2.1.3	Parameters	4
2.1.4	Events	4
2.2	Compared Parameters	5
2.3	Star Slots	6
2.4	FID Slots	6
A	Summary	7
A.1	Status	7
A.2	Comments	7

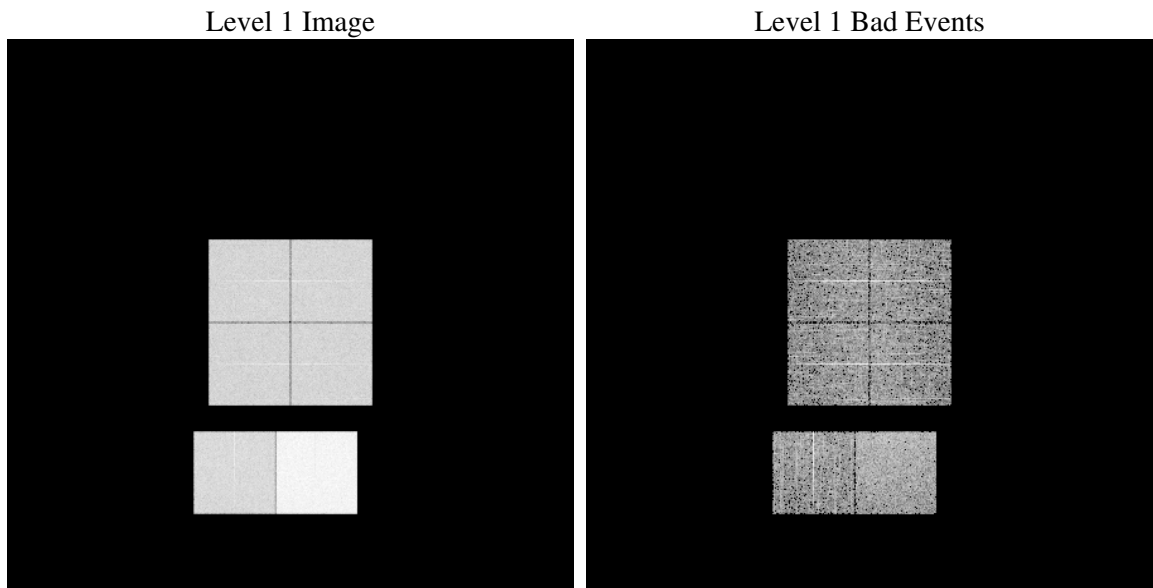
1 Front

seq_num	
obs_id	61891
title	ACIS-012367 diagnostics
observer	CHANDRA engineering request/realtime commanding
object	
dtcycle	0
cycle	P
ra_targ	0.0
dec_targ	0.0
ra_nom	334.1209077593
dec_nom	-46.628015937844
roll_nom	315.41140411961
revision	2
ontime	5369.1142219901
livetime	5301.1272648188
ontime0	2355.0268576294
ontime1	2355.0678478181
ontime2	2251.3957475871
ontime3	2273.9188875407
ontime6	2500.9968370944
ontime7	5369.1142219901
l2events	1263051

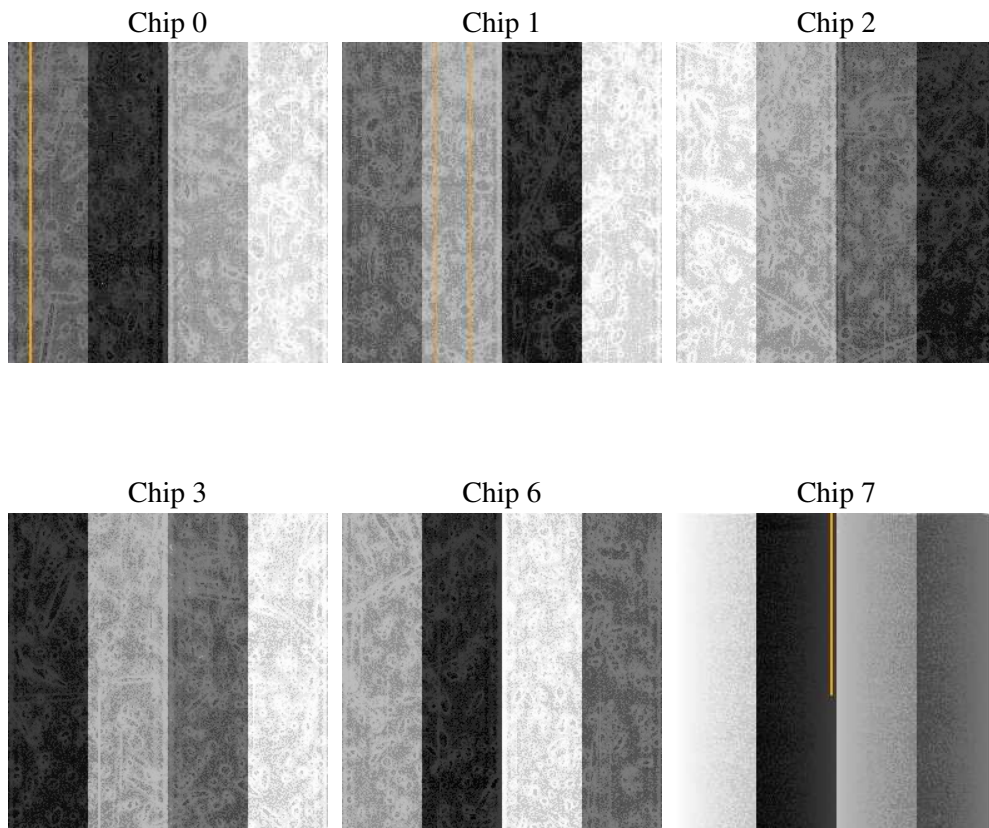
2 OBI

2.1 OBI

2.1.1 Images



2.1.2 Bias



2.1.3 Parameters

obi_num	0
ascdsver	7.6.10
caldsver	3.4.0
date	2007-06-10T00:28:44
revision	2

sched_exp_time	0.0
ontime	5369.1142219901
ontime0	2355.0268576294
ontime1	2355.0678478181
ontime2	2251.3957475871
ontime3	2273.9188875407
ontime6	2500.9968370944
ontime7	5369.1142219901
l1events	1431568

2.1.4 Events

	ccd 0	ccd 1	ccd 2	ccd 3	ccd 6	ccd 7
level 1 events	193471	195130	190123	192458	218100	442286
rejected events	16979	17571	18055	18009	19380	25329
rejected %	8%	9%	9%	9%	8%	5%

	ccd 0	ccd 1	ccd 2	ccd 3	ccd 6	ccd 7
grade 0 events	97048	97896	95737	97398	108542	108183
	50%	50%	50%	50%	49%	24%
grade 1 events	496	466	468	485	499	294
	0%	0%	0%	0%	0%	0%
grade 2 events	31228	31278	30322	30775	34530	92642
	16%	16%	15%	15%	15%	20%
grade 3 events	11107	11512	10980	11240	12371	42717
	5%	5%	5%	5%	5%	9%
grade 4 events	11312	11212	10895	10927	12223	42519
	5%	5%	5%	5%	5%	9%
grade 5 events	1322	1320	1309	1398	1644	5760
	0%	0%	0%	0%	0%	1%
grade 6 events	25797	25661	24134	24109	31054	130896
	13%	13%	12%	12%	14%	29%
grade 7 events	15161	15785	16278	16126	17237	19275
	7%	8%	8%	8%	7%	4%

2.2 Compared Parameters

Parameter	Planned	Actual	Parameter	Planned	Actual
Instrument	ACIS	ACIS	Obspar format version number	6	6
Detector	ACIS-012367	ACIS-012367	Obspar file type	PREDICTED	ACTUAL
Grating	NONE	NONE	Obspar update status	NONE	UPDATED
Data mode	FAINT	FAINT	On-chip summing requested	N	N
Observation mode	SECONDARY	SECONDARY	Subarray requested	NONE	NONE
Pointing RA	0	334.1209077592998	Alternating exposures requested	N	N
Pointing Dec	0	-46.62801593784356	Primary exposure time	3.2	3.2
Pointing Roll	0.0	315.4114041196138			
SIM focus pos (mm)	-0.782348	-1.428180813131781			
SIM defocus (mm)	0	0.1051558262725154			
SIM translation stage pos (mm)	-233.592463	250.466033080201			
SIM translation stage offset (mm)	0	-0.01005468664627074			
Observation start time	87260845.474461	87260844.706018			
Observation start date	2000-10-06T23:07:25	2000-10-06T23:07:24			
Observation end time	87306896.67619801	87306895.90775999			
Observation end date	2000-10-07T11:54:57	2000-10-07T11:54:55			
Read mode	TIMED	TIMED			

2.3 Star Slots

2.4 FID Slots

A Summary

A.1 Status

V&V Scientist	Beth Sundheim
V&V Date (YYYY-MM-DD)	2007.06.10
V&V Edition	1
V&V Disposition and Status	OK
V&V Charge Time	5.36911422

A.2 Comments