

# V&V Reference Report

## L2 ASCDS Version : 8.4.5

Observation 61874 - L2 Version 4  
Chandra X-Ray Center

L2 Processing Date : Sep 2 2012

## Contents

<b>1</b>	<b>Front</b>	<b>2</b>
<b>2</b>	<b>OBI</b>	<b>3</b>
2.1	OBI . . . . .	3
2.1.1	Images . . . . .	3
2.1.2	Bias . . . . .	3
2.1.3	Parameters . . . . .	4
2.1.4	Events . . . . .	4
2.2	Compared Parameters . . . . .	5
2.3	Star Slots . . . . .	6
2.4	FID Slots . . . . .	6
<b>A</b>	<b>Summary</b>	<b>7</b>
A.1	Status . . . . .	7
A.2	Comments . . . . .	7

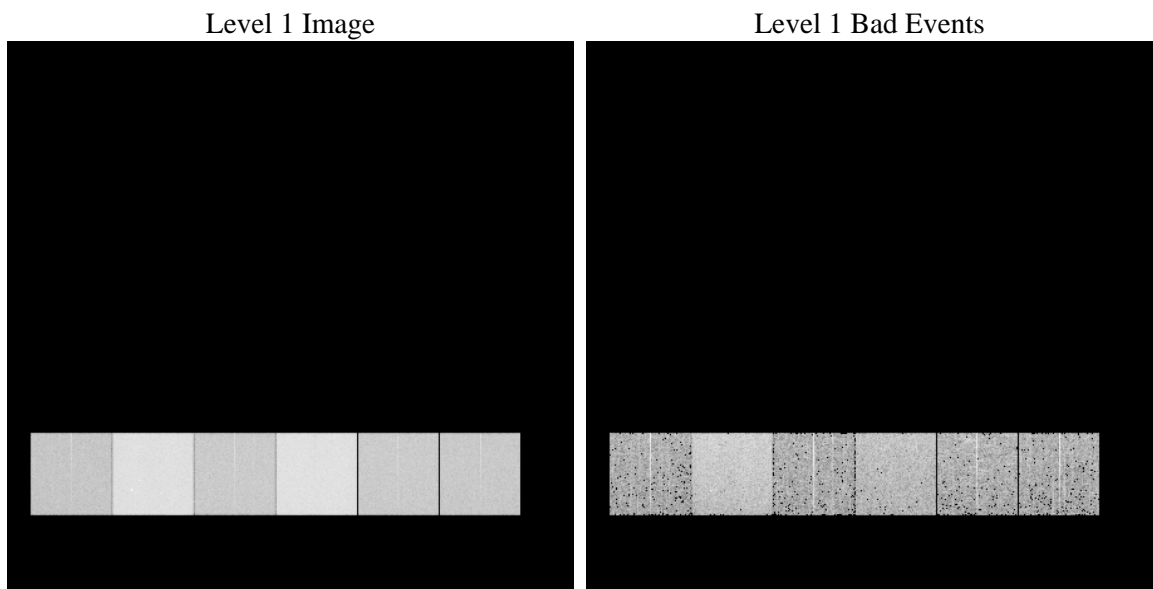
# 1 Front

seq_num	&#160	Sequence number
obs_id	61874	Observation id
title	ACIS-456789 diagnostics	Proposal title
observer	CHANDRA engineering request/realtime commanding	Principal investig
object	&#160	Source name
dtcycle	0	&#160
cycle	P	events from which exps? Prim/Second/Both
ra_targ	0.0	Observer's specified target RA [deg]
dec_targ	0.0	Observer's specified target Dec [deg]
ra_nom	162.70895437644	Nominal RA [deg]
dec_nom	52.208187749912	Nominal Dec [deg]
roll_nom	46.417827621061	Nominal Roll [deg]
revision	4	Processing version of data
ontime	5022.099598214	Sum of GTIs [s]
livetime	4958.5067491561	Livetime [s]
ontime4	1988.5124570131	Sum of GTIs [s]
ontime5	5398.0523210019	Sum of GTIs [s]
ontime6	2199.1799767017	Sum of GTIs [s]
ontime7	5022.099598214	Sum of GTIs [s]
ontime8	2205.7544749826	Sum of GTIs [s]
ontime9	2131.0053551644	Sum of GTIs [s]
l2events	1341178	Number of level 2 events

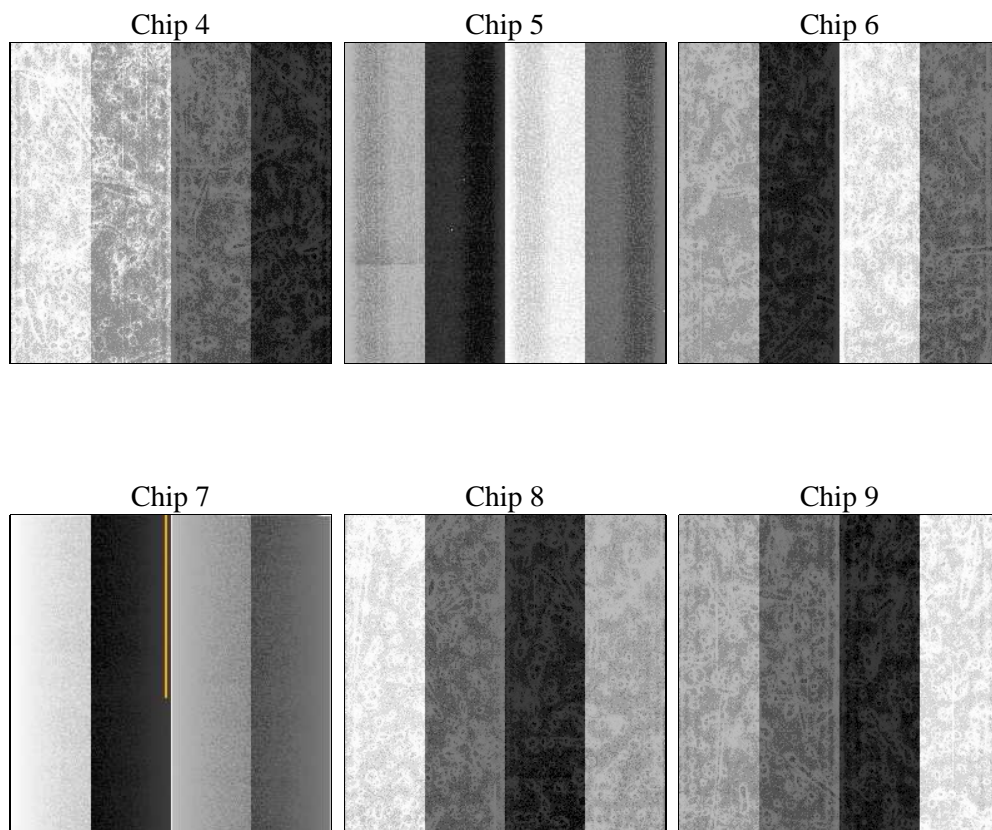
## 2 OBI

### 2.1 OBI

#### 2.1.1 Images



#### 2.1.2 Bias



### 2.1.3 Parameters

obi_num	0	Obi number	sched_exp_time	0.0	[s] Scheduled observation exposure time
ascdsver	8.4.5	Processing system revision	ontime	5022.099598214	Sum of GTIs [s]
caldsver	4.5.1.1	&#160	ontime4	1988.5124570131	Sum of GTIs [s]
date	2012-09-02T15:19:44	Date and time of file creation	ontime5	5398.0523210019	Sum of GTIs [s]
revision	4	Processing version of data	ontime6	2199.1799767017	Sum of GTIs [s]
			ontime7	5022.099598214	Sum of GTIs [s]
			ontime8	2205.7544749826	Sum of GTIs [s]
			ontime9	2131.0053551644	Sum of GTIs [s]
			l1events	1552599	Number of level 1 events

### 2.1.4 Events

	ccd 4	ccd 5	ccd 6	ccd 7	ccd 8	ccd 9		ccd 4	ccd 5	ccd 6	ccd 7	ccd 8	ccd 9
level 1 events	163607	403821	192766	417595	194307	180503	grade 0 events	81886	86650	95087	100077	96569	89205
rejected events	19587	45210	20324	29743	21818	19824		50%	21%	49%	23%	49%	49%
rejected %	11%	11%	10%	7%	11%	10%	grade 1 events	454	241	482	258	467	459
								0%	0%	0%	0%	0%	0%
							grade 2 events	25827	131461	29792	85938	30776	28573
								15%	32%	15%	20%	15%	15%
							grade 3 events	8919	22495	10592	40126	10759	9831
								5%	5%	5%	9%	5%	5%
							grade 4 events	8979	22913	10708	39371	10799	9944
								5%	5%	5%	9%	5%	5%
							grade 5 events	1283	8552	1495	5947	1558	1373
								0%	2%	0%	1%	0%	0%
							grade 6 events	19448	97974	27667	125537	25257	24236
								11%	24%	14%	30%	12%	13%
							grade 7 events	16811	33535	16943	20341	18122	16882
								10%	8%	8%	4%	9%	9%

## 2.2 Compared Parameters

Parameter	Planned	Actual	Parameter	Planned	Actual
Instrument	ACIS	ACIS	Obspar format version number	7	7
Detector	ACIS-456789	ACIS-456789	Obspar file type	PREDICTED	ACTUAL
Grating	NONE	NONE	Obspar update status	NONE	UPDATED
Data mode	FAINT	FAINT	On-chip summing requested	N	N
Observation mode	SECONDARY	SECONDARY	Subarray requested	NONE	NONE
[deg] Pointing RA	0	162.7089543764374	Alternating exposures requested	N	N
[deg] Pointing Dec	0	52.208187749912	[s] Primary exposure time	0.000000	3.2
[deg] Pointing Roll	0.0	46.41782762106116			
[mm] SIM focus pos	-0.684267	-0.6828225247311905			
[mm] SIM defocus	0	0.8505141146731063			
[mm] SIM translation stage pos	-190.132523	250.466033080201			
[mm] SIM translation stage offset	0	-0.01005468664627074			
[s] Observation start time (MET)	88678738.278	88678737.509588			
Observation start date	2000-10-23T08:58:58	2000-10-23T08:58:57			
[s] Observation end time (MET)	88689248.62800001	88689247.85998499			
Observation end date	2000-10-23T11:54:09	2000-10-23T11:54:07			
Read mode	TIMED	TIMED			

## **2.3 Star Slots**

## **2.4 FID Slots**

## A Summary

### A.1 Status

V&V Scientist	Jen Lauer
V&V Date (YYYY-MM-DD)	2012.09.10
V&V Edition	1
V&V Disposition and Status	OK
V&V Charge Time	5.022099598214

### A.2 Comments