

# V&V Reference Report

## L2 ASCDS Version : 7.6.10

Observation 61864 - L2 Version 001  
Chandra X-Ray Center

L2 Processing Date : Jun 14 2007

## Contents

<b>1</b>	<b>Front</b>	<b>2</b>
<b>2</b>	<b>OBI</b>	<b>3</b>
2.1	OBI . . . . .	3
2.1.1	Images . . . . .	3
2.1.2	Bias . . . . .	3
2.1.3	Parameters . . . . .	4
2.1.4	Events . . . . .	4
2.2	Compared Parameters . . . . .	5
2.3	Star Slots . . . . .	6
2.4	FID Slots . . . . .	6
<b>A</b>	<b>Summary</b>	<b>7</b>
A.1	Status . . . . .	7
A.2	Comments . . . . .	7

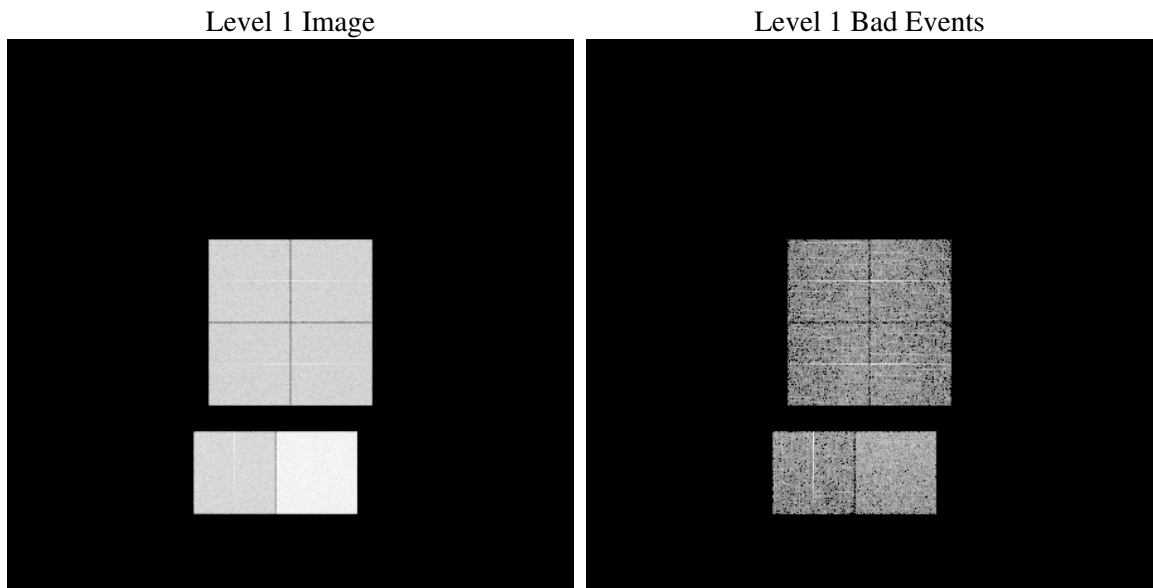
# 1 Front

seq_num	&#160
obs_id	61864
title	ACIS-012367 diagnostics
observer	CHANDRA engineering request/realtime commanding
object	&#160
dtcycle	0
cycle	P
ra_targ	0.0
dec_targ	0.0
ra_nom	176.35502241821
dec_nom	56.517534407844
roll_nom	40.698708899431
revision	2
ontime	5486.8118435293
livetime	5417.3345282051
ontime0	2385.5671539307
ontime1	2388.8490345031
ontime2	2278.6952231228
ontime3	2281.7719137222
ontime6	2531.5365350991
ontime7	5486.8118435293
l2events	1257656

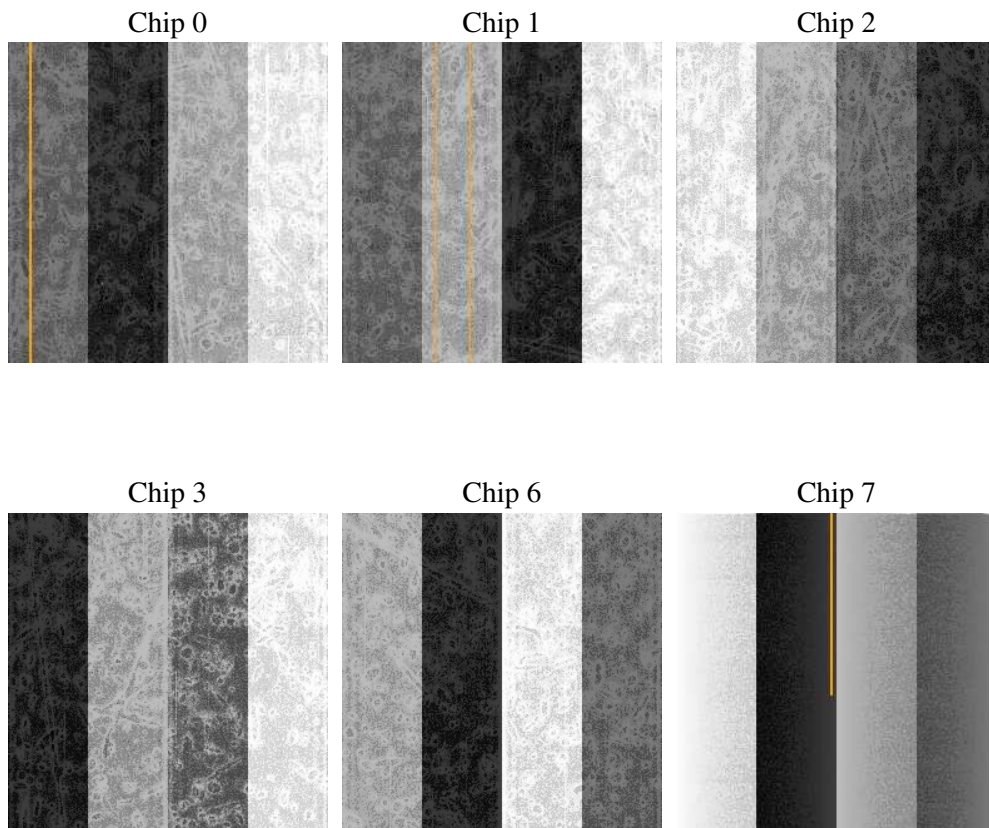
## 2 OBI

### 2.1 OBI

#### 2.1.1 Images



#### 2.1.2 Bias



### 2.1.3 Parameters

obi_num	0
ascdsver	7.6.10
caldsver	3.4.0
date	2007-06-14T17:15:10
revision	2

sched_exp_time	0.0
ontime	5486.8118435293
ontime0	2385.5671539307
ontime1	2388.8490345031
ontime2	2278.6952231228
ontime3	2281.7719137222
ontime6	2531.5365350991
ontime7	5486.8118435293
l1events	1428680

### 2.1.4 Events

	ccd 0	ccd 1	ccd 2	ccd 3	ccd 6	ccd 7
level 1 events	193702	194251	189867	189496	217262	444102
rejected events	17616	17851	17991	18580	19296	26720
rejected %	9%	9%	9%	9%	8%	6%

	ccd 0	ccd 1	ccd 2	ccd 3	ccd 6	ccd 7
grade 0 events	97516	97492	96264	95548	108381	107531
	50%	50%	50%	50%	49%	24%
grade 1 events	509	530	486	510	533	288
	0%	0%	0%	0%	0%	0%
grade 2 events	31246	30861	30014	29916	34230	92381
	16%	15%	15%	15%	15%	20%
grade 3 events	11153	11140	10884	10815	12305	42733
	5%	5%	5%	5%	5%	9%
grade 4 events	11096	11096	10777	10932	12407	42419
	5%	5%	5%	5%	5%	9%
grade 5 events	1401	1352	1312	1386	1558	5905
	0%	0%	0%	0%	0%	1%
grade 6 events	25311	26058	24168	23958	30930	132578
	13%	13%	12%	12%	14%	29%
grade 7 events	15470	15722	15962	16431	16918	20267
	7%	8%	8%	8%	7%	4%

## 2.2 Compared Parameters

Parameter	Planned	Actual	Parameter	Planned	Actual
Instrument	ACIS	ACIS	Obspar format version number	6	6
Detector	ACIS-012367	ACIS-012367	Obspar file type	PREDICTED	ACTUAL
Grating	NONE	NONE	Obspar update status	NONE	UPDATED
Data mode	FAINT	FAINT	On-chip summing requested	N	N
Observation mode	SECONDARY	SECONDARY	Subarray requested	NONE	NONE
Pointing RA	0	176.3550224182058	Alternating exposures requested	N	N
Pointing Dec	0	56.51753440784359	Primary exposure time	0.000000	3.2
Pointing Roll	0.0	40.69870889943137			
SIM focus pos (mm)	-0.782348	-0.6828225247311905			
SIM defocus (mm)	0	0.8505141146731063			
SIM translation stage pos (mm)	-233.592463	250.466033080201			
SIM translation stage offset (mm)	0	-0.01005468664627074			
Observation start time	89544779.26100001	89544778.492301			
Observation start date	2000-11-02T09:32:59	2000-11-02T09:32:58			
Observation end time	89591170.763	89591169.99405301			
Observation end date	2000-11-02T22:26:11	2000-11-02T22:26:09			
Read mode	TIMED	TIMED			

## **2.3 Star Slots**

## **2.4 FID Slots**

## A Summary

### A.1 Status

V&V Scientist	Jen Lauer
V&V Date (YYYY-MM-DD)	2007.06.14
V&V Edition	1
V&V Disposition and Status	OK
V&V Charge Time	5.48681184

### A.2 Comments