

V&V Reference Report

L2 ASCDS Version : 7.6.10

Observation 61859 - L2 Version 001
Chandra X-Ray Center

L2 Processing Date : Jun 16 2007

Contents

1	Front	2
2	OBI	3
2.1	OBI	3
2.1.1	Images	3
2.1.2	Bias	3
2.1.3	Parameters	4
2.1.4	Events	4
2.2	Compared Parameters	5
2.3	Star Slots	6
2.4	FID Slots	6
A	Summary	7
A.1	Status	7
A.2	Comments	7

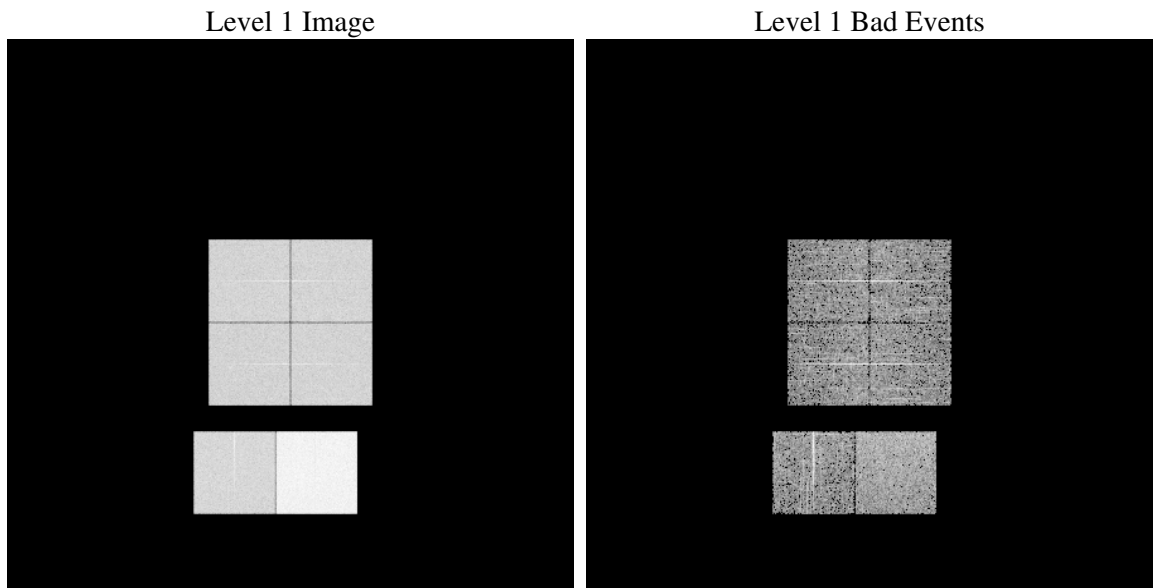
1 Front

seq_num	
obs_id	61859
title	ACIS-012367 diagnostics
observer	CHANDRA engineering request/realtime commanding
object	
dtcycle	0
cycle	P
ra_targ	0.0
dec_targ	0.0
ra_nom	356.3953456272
dec_nom	-59.495970456316
roll_nom	315.62127857228
revision	2
ontime	5431.0928415656
livetime	5362.3210737942
ontime0	2439.6939033717
ontime1	2423.5295639932
ontime2	2290.6879842579
ontime3	2352.1037036926
ontime6	2517.6016142964
ontime7	5431.0928415656
l2events	1263122

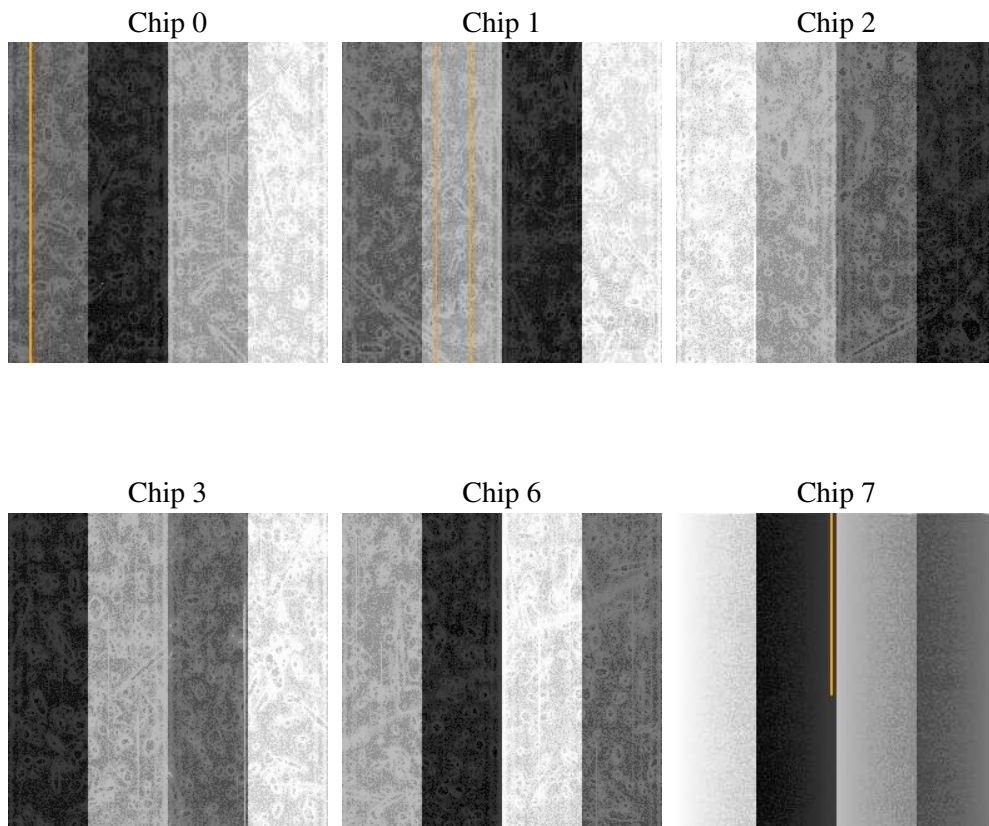
2 OBI

2.1 OBI

2.1.1 Images



2.1.2 Bias



2.1.3 Parameters

obi_num	0
ascdsver	7.6.10
caldsver	3.4.0
date	2007-06-16T22:59:46
revision	2

sched_exp_time	0.0
ontime	5431.0928415656
ontime0	2439.6939033717
ontime1	2423.5295639932
ontime2	2290.6879842579
ontime3	2352.1037036926
ontime6	2517.6016142964
ontime7	5431.0928415656
l1events	1430793

2.1.4 Events

	ccd 0	ccd 1	ccd 2	ccd 3	ccd 6	ccd 7
level 1 events	196822	196944	189663	194149	215155	438060
rejected events	17168	17534	17569	17772	18988	25476
rejected %	8%	8%	9%	9%	8%	5%

	ccd 0	ccd 1	ccd 2	ccd 3	ccd 6	ccd 7
grade 0 events	98927	98879	96057	98904	107271	107062
	50%	50%	50%	50%	49%	24%
grade 1 events	502	519	467	494	522	274
	0%	0%	0%	0%	0%	0%
grade 2 events	32011	31477	29918	30950	33780	91953
	16%	15%	15%	15%	15%	20%
grade 3 events	11293	11243	10869	11077	12052	42033
	5%	5%	5%	5%	5%	9%
grade 4 events	11476	11515	10933	11058	12319	42180
	5%	5%	5%	5%	5%	9%
grade 5 events	1385	1294	1290	1343	1531	5798
	0%	0%	0%	0%	0%	1%
grade 6 events	25947	26296	24317	24388	30745	129356
	13%	13%	12%	12%	14%	29%
grade 7 events	15281	15721	15812	15935	16935	19404
	7%	7%	8%	8%	7%	4%

2.2 Compared Parameters

Parameter	Planned	Actual	Parameter	Planned	Actual
Instrument	ACIS	ACIS	Obspar format version number	6	6
Detector	ACIS-012367	ACIS-012367	Obspar file type	PREDICTED	ACTUAL
Grating	NONE	NONE	Obspar update status	NONE	UPDATED
Data mode	FAINT	FAINT	On-chip summing requested	N	N
Observation mode	SECONDARY	SECONDARY	Subarray requested	NONE	NONE
Pointing RA	0	356.3953456271978	Alternating exposures requested	N	N
Pointing Dec	0	-59.49597045631605	Primary exposure time	3.2	3.2
Pointing Roll	0.0	315.6212785722793			
SIM focus pos (mm)	-0.782348	-0.6828225247311905			
SIM defocus (mm)	0	0.8505141146731063			
SIM translation stage pos (mm)	-233.592463	250.466033080201			
SIM translation stage offset (mm)	0	-0.01005468664627074			
Observation start time	90001306.078005	90001305.309541			
Observation start date	2000-11-07T16:21:46	2000-11-07T16:21:45			
Observation end time	90050096.07984699	90050095.311387			
Observation end date	2000-11-08T05:54:56	2000-11-08T05:54:55			
Read mode	TIMED	TIMED			

2.3 Star Slots

2.4 FID Slots

A Summary

A.1 Status

V&V Scientist	Jen Lauer
V&V Date (YYYY-MM-DD)	2007.06.18
V&V Edition	1
V&V Disposition and Status	OK
V&V Charge Time	5.43109284

A.2 Comments