

V&V Reference Report

L2 ASCDS Version : 7.6.10

Observation 61842 - L2 Version 001
Chandra X-Ray Center

L2 Processing Date : Jun 18 2007

Contents

1	Front	2
2	OBI	3
2.1	OBI	3
2.1.1	Images	3
2.1.2	Bias	3
2.1.3	Parameters	4
2.1.4	Events	4
2.2	Compared Parameters	5
2.3	Star Slots	6
2.4	FID Slots	6
A	Summary	7
A.1	Status	7
A.2	Comments	7

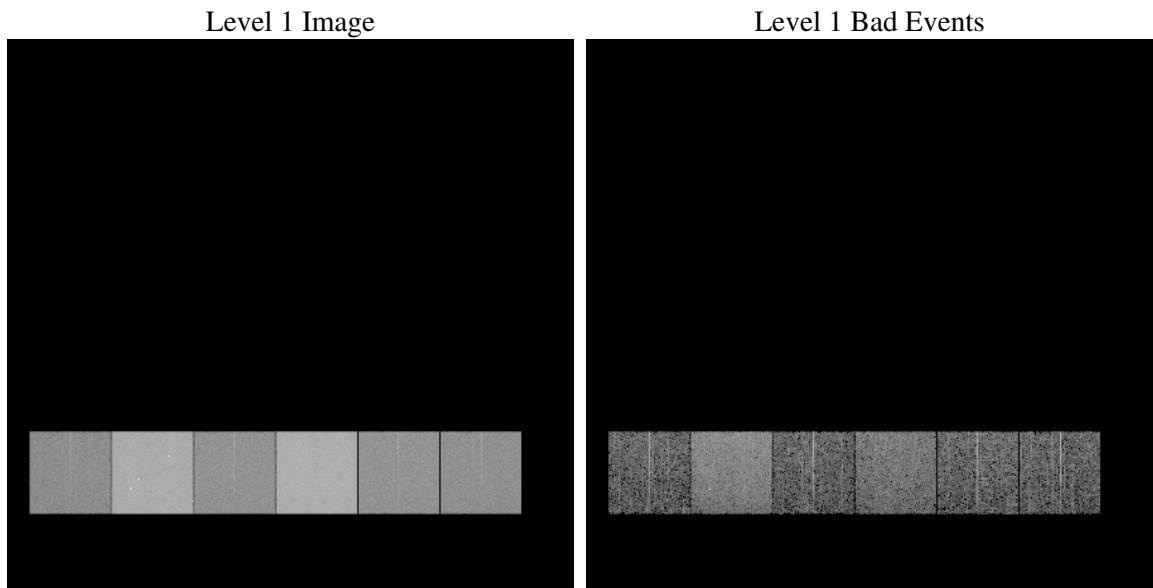
1 Front

seq_num	
obs_id	61842
title	ACIS-456789 diagnostics
observer	CHANDRA engineering request/realtime commanding
object	
dtcycle	0
cycle	P
ra_targ	0.0
dec_targ	0.0
ra_nom	208.55841778732
dec_nom	69.405399072038
roll_nom	29.373102405731
revision	2
ontime	5059.0241285115
livetime	4994.9637188177
ontime4	2109.8265064806
ontime5	5394.8085494787
ontime6	2313.9710757136
ontime7	5059.0241285115
ontime8	2364.4696537256
ontime9	2226.3396764994
l2events	1346364

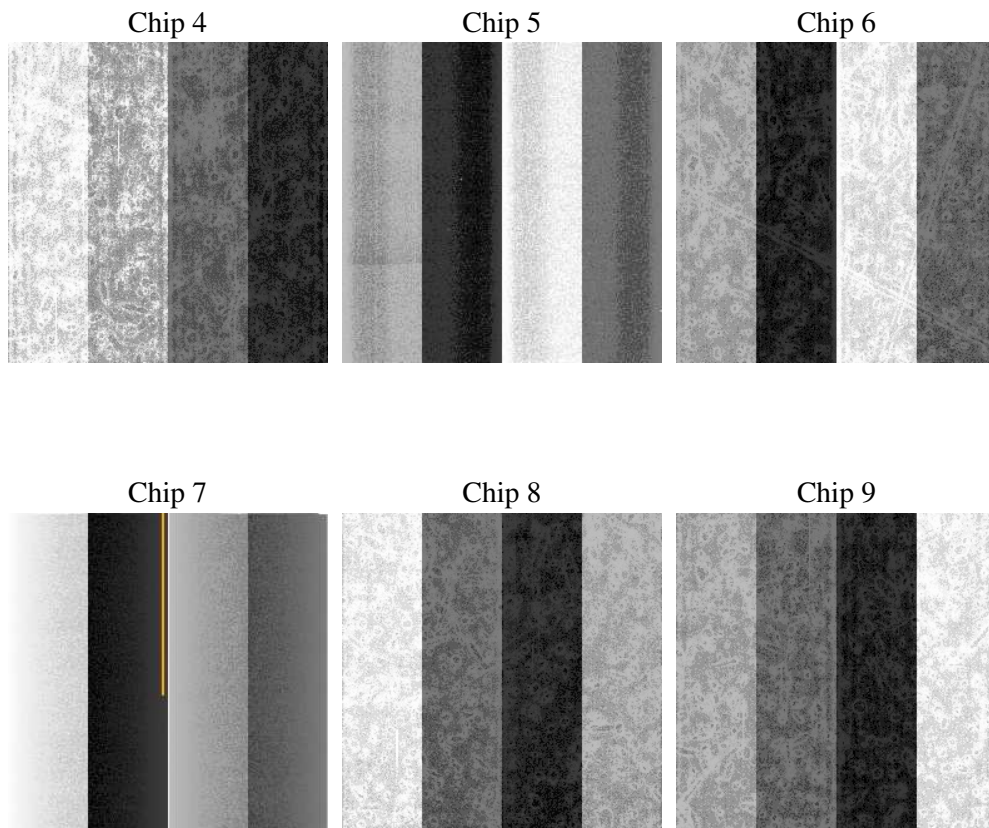
2 OBI

2.1 OBI

2.1.1 Images



2.1.2 Bias



2.1.3 Parameters

obi_num	1
ascdsver	7.6.10
caldbver	3.4.0
date	2007-06-18T16:24:18
revision	2

sched_exp_time	0.0
ontime	5059.0241285115
ontime4	2109.8265064806
ontime5	5394.8085494787
ontime6	2313.9710757136
ontime7	5059.0241285115
ontime8	2364.4696537256
ontime9	2226.3396764994
l1events	1554321

2.1.4 Events

	ccd 4	ccd 5	ccd 6	ccd 7	ccd 8	ccd 9
level 1 events	169963	394318	196445	407666	201935	183994
rejected events	19552	42107	19280	27935	20498	19338
rejected %	11%	10%	9%	6%	10%	10%

	ccd 4	ccd 5	ccd 6	ccd 7	ccd 8	ccd 9
grade 0 events	86479	88201	97469	98127	101293	90981
	50%	22%	49%	24%	50%	49%
grade 1 events	460	306	522	251	504	454
	0%	0%	0%	0%	0%	0%
grade 2 events	26634	126481	30827	84562	32013	29131
	15%	32%	15%	20%	15%	15%
grade 3 events	9064	23144	11044	39032	11352	10366
	5%	5%	5%	9%	5%	5%
grade 4 events	9016	22660	10952	38931	11258	10276
	5%	5%	5%	9%	5%	5%
grade 5 events	1242	8021	1421	5480	1552	1507
	0%	2%	0%	1%	0%	0%
grade 6 events	20366	94413	28334	122188	26783	25314
	11%	23%	14%	29%	13%	13%
grade 7 events	16702	31092	15876	19095	17180	15965
	9%	7%	8%	4%	8%	8%

2.2 Compared Parameters

Parameter	Planned	Actual	Parameter	Planned	Actual
Instrument	ACIS	ACIS	Obspar format version number	6	6
Detector	ACIS-456789	ACIS-456789	Obspar file type	PREDICTED	ACTUAL
Grating	NONE	NONE	Obspar update status	NONE	UPDATED
Data mode	FAINT	FAINT	On-chip summing requested	N	N
Observation mode	SECONDARY	SECONDARY	Subarray requested	NONE	NONE
Pointing RA	0	208.5584177873207	Alternating exposures requested	N	N
Pointing Dec	0	69.40539907203816	Primary exposure time	0.000000	3.2
Pointing Roll	0.0	29.37310240573089			
SIM focus pos (mm)	-0.684267	-0.7809083437167272			
SIM defocus (mm)	0	0.7524282956875696			
SIM translation stage pos (mm)	-190.132523	250.466033080201			
SIM translation stage offset (mm)	0	-0.01005468664627074			
Observation start time	91421041.832	91421041.06362499			
Observation start date	2000-11-24T02:44:02	2000-11-24T02:44:01			
Observation end time	91431552.183	91431551.41402701			
Observation end date	2000-11-24T05:39:12	2000-11-24T05:39:11			
Read mode	TIMED	TIMED			

2.3 Star Slots

2.4 FID Slots

A Summary

A.1 Status

V&V Scientist	Jen Lauer
V&V Date (YYYY-MM-DD)	2007.06.18
V&V Edition	1
V&V Disposition and Status	OK
V&V Charge Time	5.05902412

A.2 Comments