

V&V Reference Report

L2 ASCDS Version : 7.6.10

Observation 61840 - L2 Version 001
Chandra X-Ray Center

L2 Processing Date : Jun 18 2007

Contents

1	Front	2
2	OBI	3
2.1	OBI	3
2.1.1	Images	3
2.1.2	Bias	3
2.1.3	Parameters	4
2.1.4	Events	4
2.2	Compared Parameters	5
2.3	Star Slots	6
2.4	FID Slots	6
A	Summary	7
A.1	Status	7
A.2	Comments	7

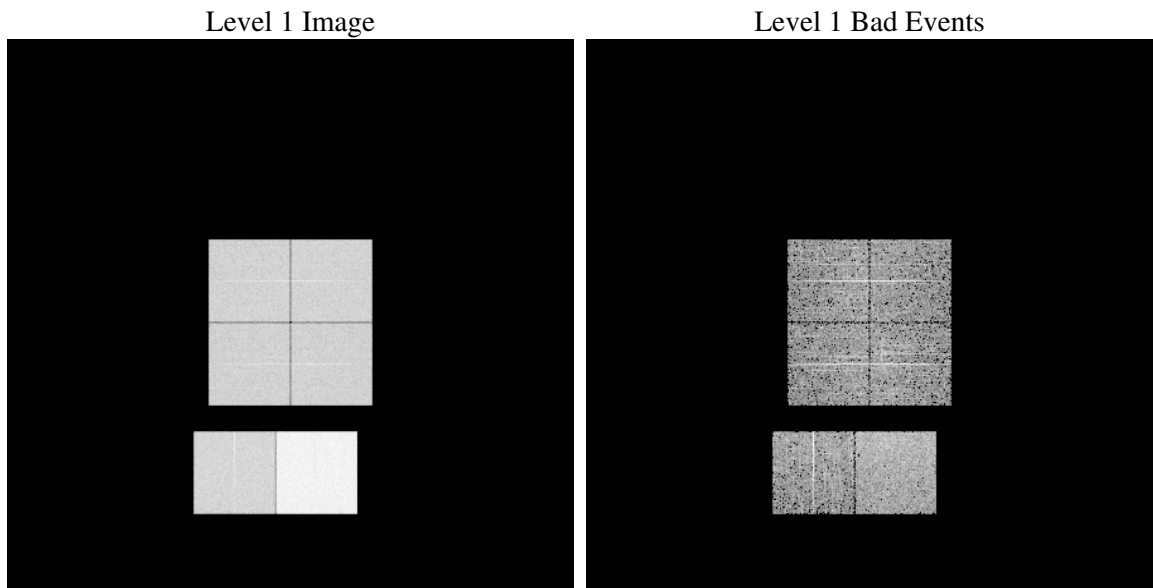
1 Front

seq_num	
obs_id	61840
title	ACIS-012367 diagnostics
observer	CHANDRA engineering request/realtime commanding
object	
dtcycle	0
cycle	P
ra_targ	0.0
dec_targ	0.0
ra_nom	208.5559767918
dec_nom	69.405769281344
roll_nom	31.288551405794
revision	2
ontime	5590.5240392536
livetime	5519.7334576591
ontime0	2369.487714082
ontime1	2424.6263642609
ontime2	2284.7074758261
ontime3	2291.1892966479
ontime6	2499.2520550489
ontime7	5590.5240392536
l2events	1252194

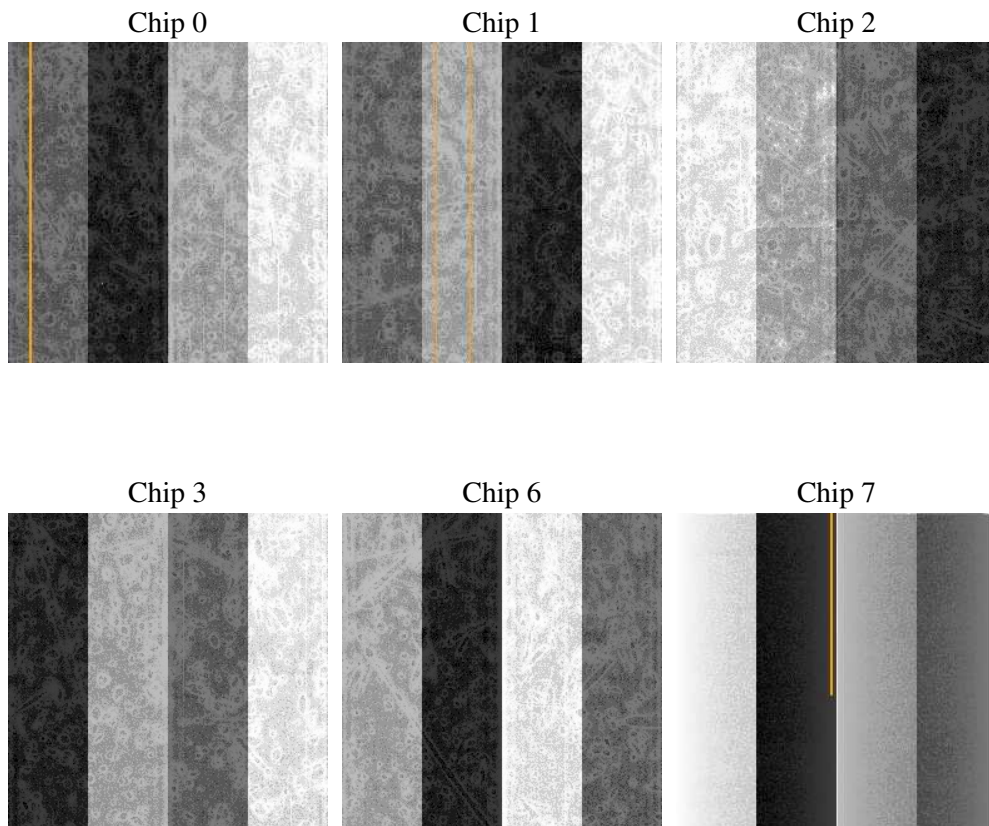
2 OBI

2.1 OBI

2.1.1 Images



2.1.2 Bias



2.1.3 Parameters

obi_num	1
ascdsver	7.6.10
caldsver	3.4.0
date	2007-06-18T18:39:42
revision	2

sched_exp_time	0.0
ontime	5590.5240392536
ontime0	2369.487714082
ontime1	2424.6263642609
ontime2	2284.7074758261
ontime3	2291.1892966479
ontime6	2499.2520550489
ontime7	5590.5240392536
l1events	1428936

2.1.4 Events

	ccd 0	ccd 1	ccd 2	ccd 3	ccd 6	ccd 7
level 1 events	193276	196132	187991	188386	213242	449909
rejected events	19430	18156	18521	19540	20566	27862
rejected %	10%	9%	9%	10%	9%	6%

	ccd 0	ccd 1	ccd 2	ccd 3	ccd 6	ccd 7
grade 0 events	95898	98605	94735	94643	104741	108648
	49%	50%	50%	50%	49%	24%
grade 1 events	536	467	522	530	541	283
	0%	0%	0%	0%	0%	0%
grade 2 events	30769	31612	29805	29630	33542	93867
	15%	16%	15%	15%	15%	20%
grade 3 events	10984	11178	10559	10630	12105	42973
	5%	5%	5%	5%	5%	9%
grade 4 events	10921	11147	10583	10555	11746	43289
	5%	5%	5%	5%	5%	9%
grade 5 events	1436	1420	1322	1381	1615	6260
	0%	0%	0%	0%	0%	1%
grade 6 events	25525	25659	24035	23627	30777	133495
	13%	13%	12%	12%	14%	29%
grade 7 events	17207	16044	16430	17390	18175	21094
	8%	8%	8%	9%	8%	4%

2.2 Compared Parameters

Parameter	Planned	Actual	Parameter	Planned	Actual
Instrument	ACIS	ACIS	Obspar format version number	6	6
Detector	ACIS-012367	ACIS-012367	Obspar file type	PREDICTED	ACTUAL
Grating	NONE	NONE	Obspar update status	NONE	UPDATED
Data mode	FAINT	FAINT	On-chip summing requested	N	N
Observation mode	SECONDARY	SECONDARY	Subarray requested	NONE	NONE
Pointing RA	0	208.5559767918049	Alternating exposures requested	N	N
Pointing Dec	0	69.40576928134446	Primary exposure time	0.000000	3.2
Pointing Roll	0.0	31.28855140579359			
SIM focus pos (mm)	-0.782348	-0.6828225247311905			
SIM defocus (mm)	0	0.8505141146731063			
SIM translation stage pos (mm)	-233.592463	250.466033080201			
SIM translation stage offset (mm)	0	-0.01005468664627074			
Observation start time	91600914.98899999	91600914.220496			
Observation start date	2000-11-26T04:41:55	2000-11-26T04:41:54			
Observation end time	91644664.04099999	91644663.272168			
Observation end date	2000-11-26T16:51:04	2000-11-26T16:51:03			
Read mode	TIMED	TIMED			

2.3 Star Slots

2.4 FID Slots

A Summary

A.1 Status

V&V Scientist	Jen Lauer
V&V Date (YYYY-MM-DD)	2007.06.18
V&V Edition	1
V&V Disposition and Status	OK
V&V Charge Time	5.59052403

A.2 Comments