

# V&V Reference Report

## L2 ASCDS Version : 7.6.10

Observation 61833 - L2 Version 001  
Chandra X-Ray Center

L2 Processing Date : Jun 18 2007

## Contents

<b>1</b>	<b>Front</b>	<b>2</b>
<b>2</b>	<b>OBI</b>	<b>3</b>
2.1	OBI . . . . .	3
2.1.1	Images . . . . .	3
2.1.2	Bias . . . . .	3
2.1.3	Parameters . . . . .	4
2.1.4	Events . . . . .	4
2.2	Compared Parameters . . . . .	5
2.3	Star Slots . . . . .	6
2.4	FID Slots . . . . .	6
<b>A</b>	<b>Summary</b>	<b>7</b>
A.1	Status . . . . .	7
A.2	Comments . . . . .	7

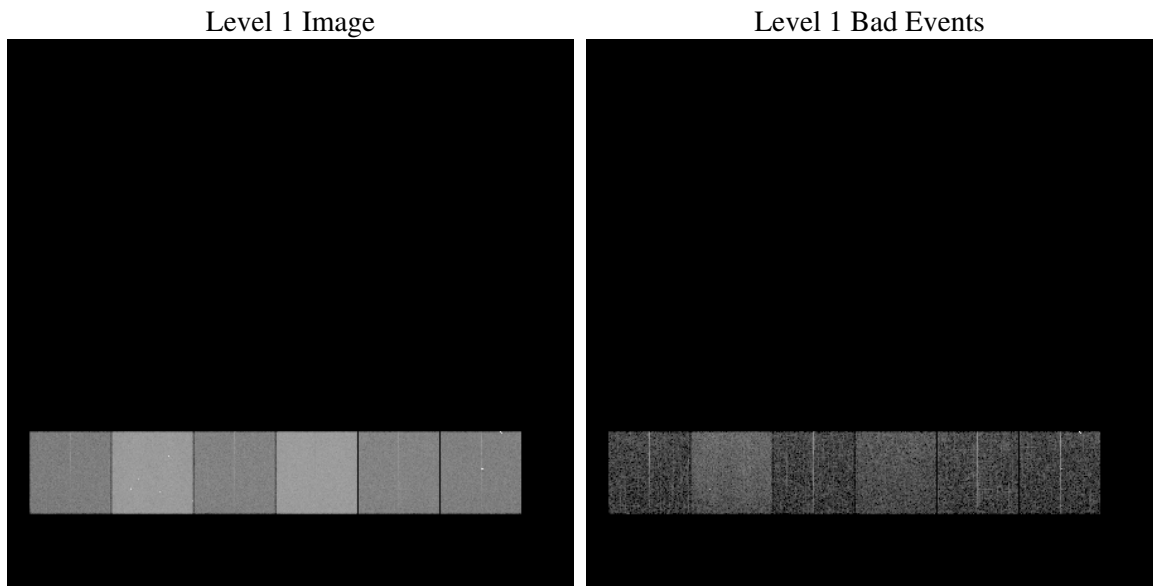
# 1 Front

seq_num	&#160
obs_id	61833
title	ACIS-456789 diagnostics
observer	CHANDRA engineering request/realtime commanding
object	&#160
dtcycle	0
cycle	P
ra_targ	0.0
dec_targ	0.0
ra_nom	245.02656339907
dec_nom	30.017166008312
roll_nom	4.2165053169506
revision	2
ontime	5036.4433412403
livetime	4972.6688630714
ontime4	2168.2540095001
ontime5	5420.3299593031
ontime6	2333.5230834633
ontime7	5036.4433412403
ontime8	2382.1624894291
ontime9	2271.8203133047
l2events	1352842

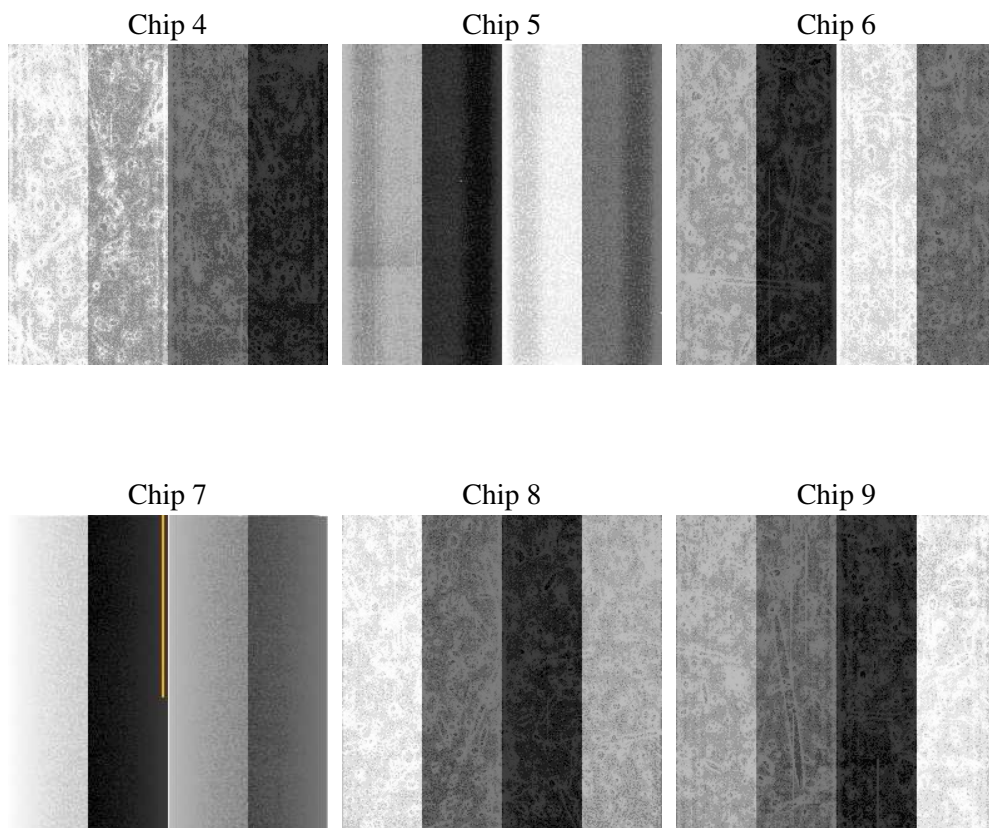
## 2 OBI

### 2.1 OBI

#### 2.1.1 Images



#### 2.1.2 Bias



### 2.1.3 Parameters

obi_num	1
ascdsver	7.6.10
caldsver	3.4.0
date	2007-06-18T20:22:32
revision	2

sched_exp_time	0.0
ontime	5036.4433412403
ontime4	2168.2540095001
ontime5	5420.3299593031
ontime6	2333.5230834633
ontime7	5036.4433412403
ontime8	2382.1624894291
ontime9	2271.8203133047
l1events	1556124

### 2.1.4 Events

	ccd 4	ccd 5	ccd 6	ccd 7	ccd 8	ccd 9
level 1 events	172818	390484	197518	402966	203316	189022
rejected events	17921	38197	17996	25330	20630	19147
rejected %	10%	9%	9%	6%	10%	10%

	ccd 4	ccd 5	ccd 6	ccd 7	ccd 8	ccd 9
grade 0 events	88120	90523	98991	98970	101306	93748
	50%	23%	50%	24%	49%	49%
grade 1 events	468	256	481	276	495	1810
	0%	0%	0%	0%	0%	0%
grade 2 events	27473	123904	31004	84075	32257	30765
	15%	31%	15%	20%	15%	16%
grade 3 events	9435	23537	11078	38482	11498	10282
	5%	6%	5%	9%	5%	5%
grade 4 events	9497	23276	11103	38282	11739	10340
	5%	5%	5%	9%	5%	5%
grade 5 events	1203	7598	1518	5393	1572	1530
	0%	1%	0%	1%	0%	0%
grade 6 events	21057	92786	28315	119570	26868	25478
	12%	23%	14%	29%	13%	13%
grade 7 events	15565	28604	15028	17918	17581	15069
	9%	7%	7%	4%	8%	7%

## 2.2 Compared Parameters

Parameter	Planned	Actual	Parameter	Planned	Actual
Instrument	ACIS	ACIS	Obspar format version number	6	6
Detector	ACIS-456789	ACIS-456789	Obspar file type	PREDICTED	ACTUAL
Grating	NONE	NONE	Obspar update status	NONE	UPDATED
Data mode	FAINT	FAINT	On-chip summing requested	N	N
Observation mode	SECONDARY	SECONDARY	Subarray requested	NONE	NONE
Pointing RA	0	245.026563399072	Alternating exposures requested	N	N
Pointing Dec	0	30.01716600831179	Primary exposure time	3.2	3.2
Pointing Roll	0.0	4.216505316950562			
SIM focus pos (mm)	-0.684267	-0.6828225247311905			
SIM defocus (mm)	0	0.8505141146731063			
SIM translation stage pos (mm)	-190.132523	250.466033080201			
SIM translation stage offset (mm)	0	-0.01005468664627074			
Observation start time	92105215.008231	92105214.239756			
Observation start date	2000-12-02T00:46:55	2000-12-02T00:46:54			
Observation end time	92116721.65867101	92116720.890196			
Observation end date	2000-12-02T03:58:42	2000-12-02T03:58:40			
Read mode	TIMED	TIMED			

## **2.3 Star Slots**

## **2.4 FID Slots**

## A Summary

### A.1 Status

V&V Scientist	Jen Lauer
V&V Date (YYYY-MM-DD)	2007.06.19
V&V Edition	1
V&V Disposition and Status	OK
V&V Charge Time	5.03644334

### A.2 Comments