

# V&V Reference Report

## L2 ASCDS Version : 7.6.10

Observation 61816 - L2 Version 001  
Chandra X-Ray Center

L2 Processing Date : Jun 20 2007

## Contents

<b>1</b>	<b>Front</b>	<b>2</b>
<b>2</b>	<b>OBI</b>	<b>3</b>
2.1	OBI . . . . .	3
2.1.1	Images . . . . .	3
2.1.2	Bias . . . . .	3
2.1.3	Parameters . . . . .	4
2.1.4	Events . . . . .	4
2.2	Compared Parameters . . . . .	5
2.3	Star Slots . . . . .	6
2.4	FID Slots . . . . .	6
<b>A</b>	<b>Summary</b>	<b>7</b>
A.1	Status . . . . .	7
A.2	Comments . . . . .	7

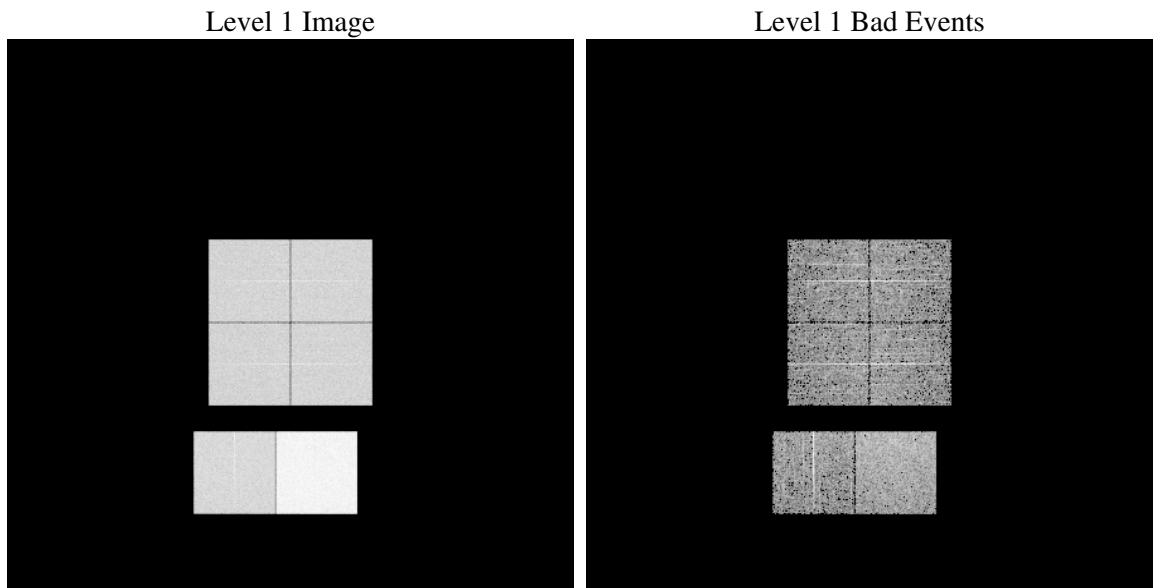
# 1 Front

seq_num	&#160
obs_id	61816
title	ACIS-012367 diagnostics
observer	CHANDRA engineering request/realtime commanding
object	&#160
dtcycle	0
cycle	P
ra_targ	0.0
dec_targ	0.0
ra_nom	24.424092627853
dec_nom	5.0541170710065
roll_nom	293.99406707752
revision	3
ontime	5619.5650301427
livetime	5548.4067140352
ontime0	2430.4663049281
ontime1	2482.3259477317
ontime2	2359.2459238172
ontime3	2381.7687746584
ontime6	2595.7625966072
ontime7	5619.5650301427
l2events	1254787

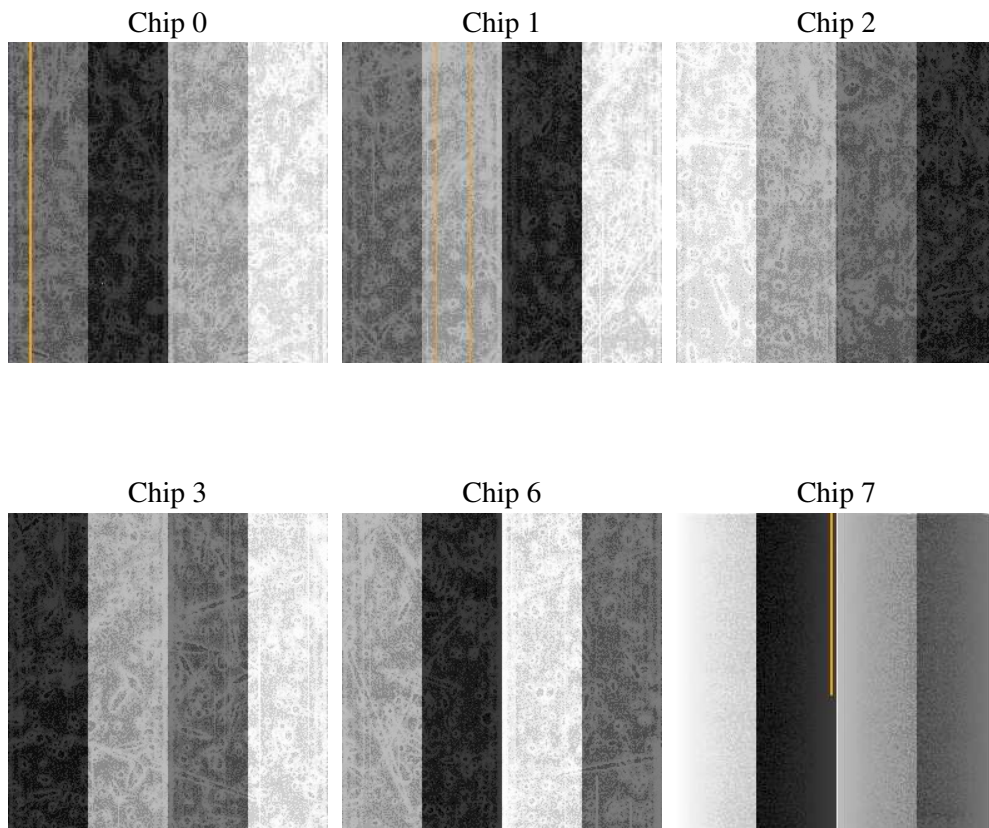
## 2 OBI

### 2.1 OBI

#### 2.1.1 Images



#### 2.1.2 Bias



### 2.1.3 Parameters

obi_num	0
ascdsver	7.6.10
caldsver	3.4.0
date	2007-06-20T17:41:53
revision	3

sched_exp_time	0.0
ontime	5619.5650301427
ontime0	2430.4663049281
ontime1	2482.3259477317
ontime2	2359.2459238172
ontime3	2381.7687746584
ontime6	2595.7625966072
ontime7	5619.5650301427
l1events	1428855

### 2.1.4 Events

	ccd 0	ccd 1	ccd 2	ccd 3	ccd 6	ccd 7
level 1 events	192957	195725	189128	192509	215656	442880
rejected events	17783	18296	17848	18921	19652	27921
rejected %	9%	9%	9%	9%	9%	6%

	ccd 0	ccd 1	ccd 2	ccd 3	ccd 6	ccd 7
grade 0 events	97051	98073	95505	97163	107263	105627
	50%	50%	50%	50%	49%	23%
grade 1 events	469	469	491	485	526	280
	0%	0%	0%	0%	0%	0%
grade 2 events	30848	31367	30211	30779	33909	92504
	15%	16%	15%	15%	15%	20%
grade 3 events	10963	11284	10802	11039	12011	42435
	5%	5%	5%	5%	5%	9%
grade 4 events	11116	11233	10629	10855	11966	41732
	5%	5%	5%	5%	5%	9%
grade 5 events	1422	1431	1331	1394	1608	6185
	0%	0%	0%	0%	0%	1%
grade 6 events	25311	25472	24133	23752	30976	132661
	13%	13%	12%	12%	14%	29%
grade 7 events	15777	16396	16026	17042	17397	21456
	8%	8%	8%	8%	8%	4%

## 2.2 Compared Parameters

Parameter	Planned	Actual	Parameter	Planned	Actual
Instrument	ACIS	ACIS	Obspar format version number	6	6
Detector	ACIS-012367	ACIS-012367	Obspar file type	PREDICTED	ACTUAL
Grating	NONE	NONE	Obspar update status	NONE	UPDATED
Data mode	FAINT	FAINT	On-chip summing requested	N	N
Observation mode	SECONDARY	SECONDARY	Subarray requested	NONE	NONE
Pointing RA	0	24.4240926278528	Alternating exposures requested	N	N
Pointing Dec	0	5.054117071006488	Primary exposure time	3.2	3.2
Pointing Roll	0.0	293.9940670775227			
SIM focus pos (mm)	-0.782348	-0.7809083437167272			
SIM defocus (mm)	0	0.7524282956875696			
SIM translation stage pos (mm)	-233.592463	250.466033080201			
SIM translation stage offset (mm)	0	-0.01005468664627074			
Observation start time	93428861.10880201	93428860.34033599			
Observation start date	2000-12-17T08:27:41	2000-12-17T08:27:40			
Observation end time	93439894.209224	93439893.440758			
Observation end date	2000-12-17T11:31:34	2000-12-17T11:31:33			
Read mode	TIMED	TIMED			

## **2.3 Star Slots**

## **2.4 FID Slots**

## A Summary

### A.1 Status

V&V Scientist	Jen Lauer
V&V Date (YYYY-MM-DD)	2007.06.21
V&V Edition	1
V&V Disposition and Status	OK
V&V Charge Time	5.61956503

### A.2 Comments