

# V&V Reference Report

## L2 ASCDS Version : 8.3.2

Observation 62983 - L2 Version 4  
Chandra X-Ray Center

L2 Processing Date : Aug 15 2010

## Contents

<b>1</b>	<b>Front</b>	<b>2</b>
<b>2</b>	<b>OBI</b>	<b>3</b>
2.1	OBI . . . . .	3
2.1.1	Images . . . . .	3
2.1.2	Parameters . . . . .	4
2.1.3	Events . . . . .	4
2.2	Compared Parameters . . . . .	5
2.3	Star Slots . . . . .	6
2.4	FID Slots . . . . .	6
<b>A</b>	<b>Summary</b>	<b>7</b>
A.1	Status . . . . .	7
A.2	Comments . . . . .	7

# 1 Front

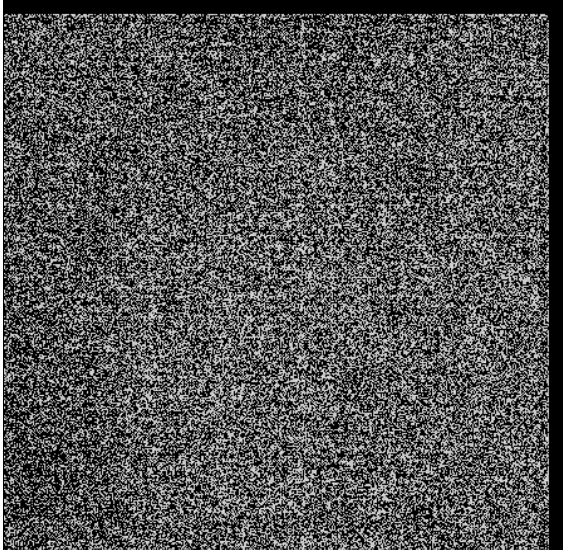
seq_num	0	Sequence number
obs_id	62983	Observation id
title	HRC-I checkout: center edge blank checkout	Proposal title
observer	CHANDRA orbital activation and checkout	Principal investigator
object	&#160	Source name
ra_targ	0.0	Target RA
dec_targ	0.0	Target Dec
ra_nom	41.947669834407	Nominal RA
dec_nom	-11.146311371719	Nominal Dec
roll_nom	108.96738894506	Nominal Roll
revision	4	Processing version of data
ontime	0.0	[s]
livetime	0.0	Ontime multiplied by DTCOR
l2events	0	Number of level 2 events

## 2 OBI

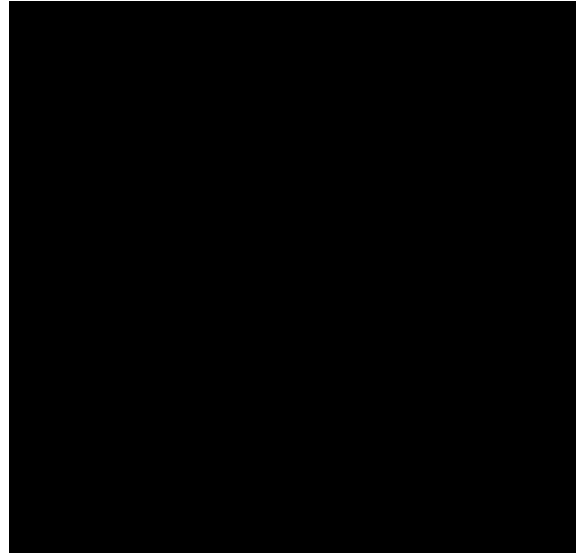
### 2.1 OBI

#### 2.1.1 Images

Level 1 Image



Level 1 Bad Events



### 2.1.2 Parameters

obi_num	0	ObI number	sched_exp_time	3000	Scheduled observation exposure time
ascdsver	8.3.2	Processing system revision	ontime	0.0	[s]
caldbver	4.3.0	&#160	l1events	118315	Number of level 1 events
date	2010-08-15T11:39:28	Date and time of file creation			
revision	4	Processing version of data			

### 2.1.3 Events

#### Level 1 Events

	<b>segment 0</b>
level 1 events	118315
rejected events	0
rejected %	0%

## 2.2 Compared Parameters

Parameter	Planned	Actual
Instrument	HRC	HRC
Detector	HRC-I	HRC-I
Grating	NONE	NONE
Data mode	OBSERVING	OBSERVING
Observation mode	SECONDARY	SECONDARY
Pointing RA	0	41.94766983440719
Pointing Dec	0	-11.14631137171884
Pointing Roll	0.0	108.9673889450569
SIM focus pos (mm)	-1.040293	0
SIM defocus (mm)	0	0
SIM translation stage pos (mm)	126.985494	0
SIM translation stage offset (mm)	0	0
Observation start time	49615944.15	49615943.538128
Observation start date	1999-07-29T06:12:24	1999-07-29T06:12:23
Observation stop time	49617102.406	49617101.788166
Observation end date	1999-07-29T06:31:42	1999-07-29T06:31:41

Parameter	Planned	Actual
Obspar format version number	6	6
Obspar file type	PREDICTED	ACTUAL
Obspar update status	NONE	UPDATED

## **2.3 Star Slots**

## **2.4 FID Slots**

# A Summary

## A.1 Status

V&V Scientist	Joy Nichols
V&V Date (YYYY-MM-DD)	2010.08.17
V&V Edition	1
V&V Disposition and Status	OK
V&V Charge Time	0

## A.2 Comments

HRC center/edge blank test. There are only level 1 events because there is no Kalman lock during this observation.