

V&V Reference Report

L2 ASCDS Version : 8.3.2.1

Observation 62864 - L2 Version 3

Chandra X-Ray Center

L2 Processing Date : Sep 28 2010

Contents

1	Front	2
2	OBI	3
2.1	OBI	3
2.1.1	Images	3
2.1.2	Bias	3
2.1.3	Parameters	4
2.1.4	Events	4
2.2	Compared Parameters	5
2.3	Star Slots	6
2.4	FID Slots	6
A	Summary	7
A.1	Status	7
A.2	Comments	7

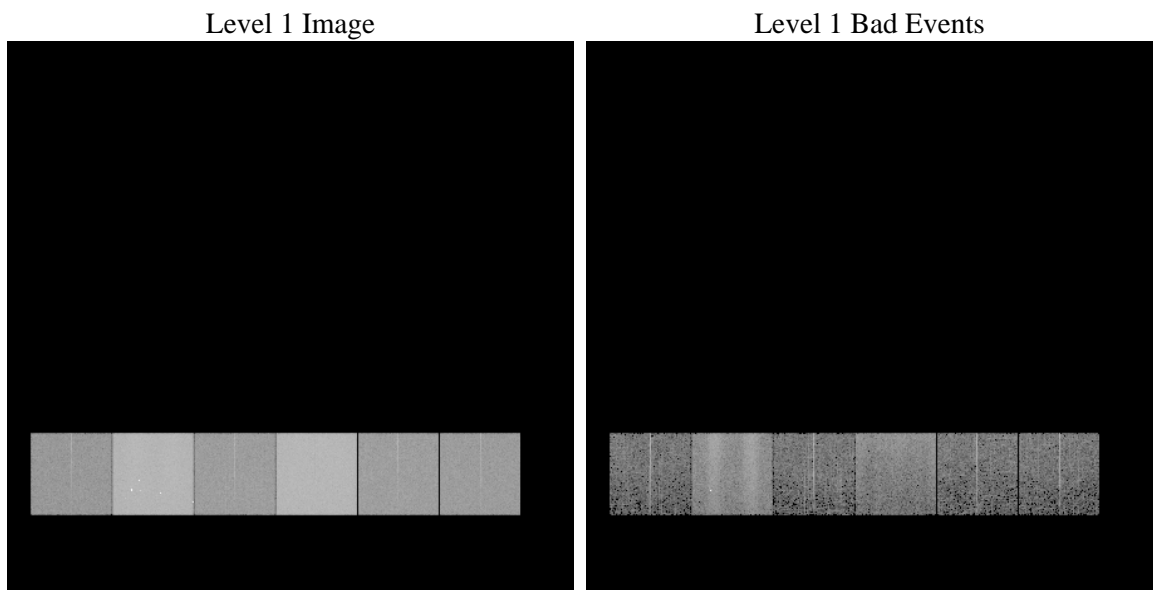
1 Front

seq_num	 	Sequence number
obs_id	62864	Observation id
title	ACIS-456789 diagnostics	Proposal title
observer	CHANDRA engineering request/realtime commanding	Principal investig
object	 	Source name
dtcycle	0	
cycle	P	events from which exps? Prim/Second/Both
ra_targ	0.0	Observer's specified target RA
dec_targ	0.0	Observer's specified target Dec
ra_nom	268.19847792275	Nominal RA
dec_nom	-61.505432507849	Nominal Dec
roll_nom	269.2770717472	Nominal Roll
revision	3	Processing version of data
ontime	3409.5671942756	Sum of GTIs [s]
livetime	3366.3932014668	Livetime [s]
ontime4	1254.2812654972	Sum of GTIs [s]
ontime5	3645.6150235832	Sum of GTIs [s]
ontime6	1432.5384059772	Sum of GTIs [s]
ontime7	3409.5671942756	Sum of GTIs [s]
ontime8	1445.5025360659	Sum of GTIs [s]
ontime9	1419.5741362274	Sum of GTIs [s]
l2events	1138312	Number of level 2 events

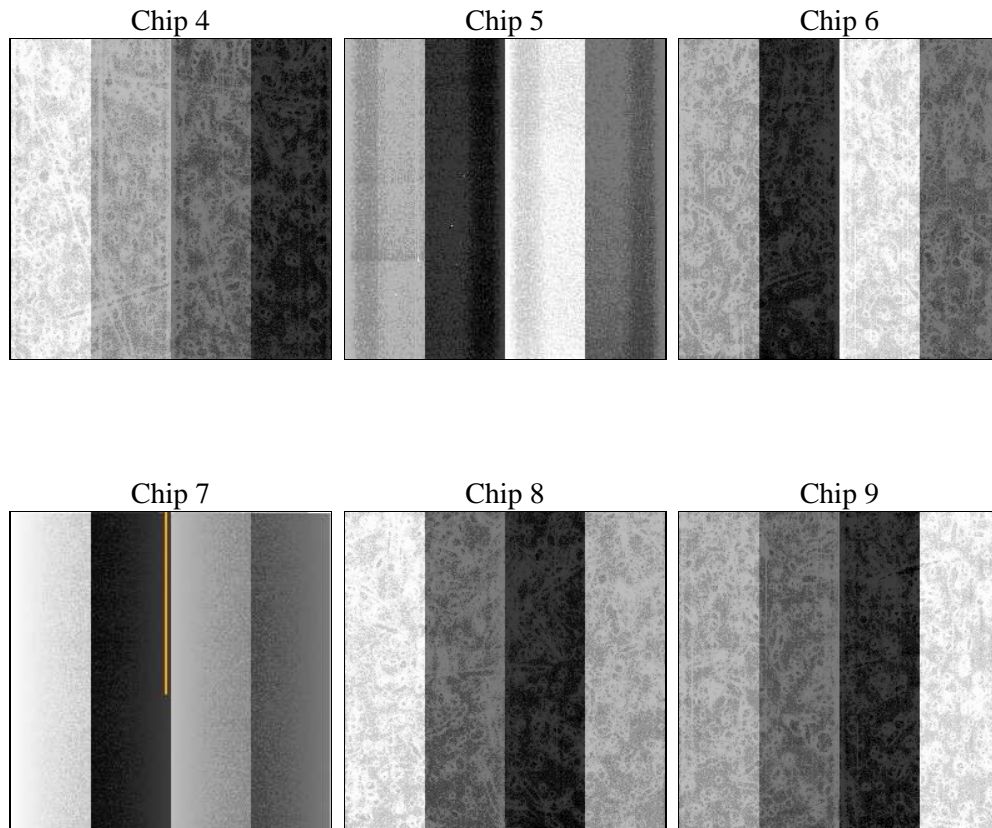
2 OBI

2.1 OBI

2.1.1 Images



2.1.2 Bias



2.1.4 Events

obi_num	0	Obi number	<table><tr><td>sched_exp_time</td><td>0.0</td><td>Scheduled observation exposure time</td></tr><tr><td>ontime</td><td>3409.5671942756</td><td>Sum of GTIs [s]</td></tr><tr><td>ontime4</td><td>1254.2812654972</td><td>Sum of GTIs [s]</td></tr><tr><td>ontime5</td><td>3645.6150235832</td><td>Sum of GTIs [s]</td></tr><tr><td>ontime6</td><td>1432.5384059772</td><td>Sum of GTIs [s]</td></tr><tr><td>ontime7</td><td>3409.5671942756</td><td>Sum of GTIs [s]</td></tr><tr><td>ontime8</td><td>1445.5025360659</td><td>Sum of GTIs [s]</td></tr><tr><td>ontime9</td><td>1419.5741362274</td><td>Sum of GTIs [s]</td></tr><tr><td>l1events</td><td>1340002</td><td>Number of level 1 events</td></tr></table>	sched_exp_time	0.0	Scheduled observation exposure time	ontime	3409.5671942756	Sum of GTIs [s]	ontime4	1254.2812654972	Sum of GTIs [s]	ontime5	3645.6150235832	Sum of GTIs [s]	ontime6	1432.5384059772	Sum of GTIs [s]	ontime7	3409.5671942756	Sum of GTIs [s]	ontime8	1445.5025360659	Sum of GTIs [s]	ontime9	1419.5741362274	Sum of GTIs [s]	l1events	1340002	Number of level 1 events
sched_exp_time	0.0	Scheduled observation exposure time																												
ontime	3409.5671942756	Sum of GTIs [s]																												
ontime4	1254.2812654972	Sum of GTIs [s]																												
ontime5	3645.6150235832	Sum of GTIs [s]																												
ontime6	1432.5384059772	Sum of GTIs [s]																												
ontime7	3409.5671942756	Sum of GTIs [s]																												
ontime8	1445.5025360659	Sum of GTIs [s]																												
ontime9	1419.5741362274	Sum of GTIs [s]																												
l1events	1340002	Number of level 1 events																												
ascdsver	8.3.2.1	ASCDS version number																												
caldsver	4.3.1	 																												
date	2010-09-28T18:56:48	Date and time of file creation																												
revision	3	Processing version of data																												

2.1.4 Events

	ccd 4	ccd 5	ccd 6	ccd 7	ccd 8	ccd 9
level 1 events	130116	368566	156654	374465	161109	149092
rejected events	21814	59864	23440	36593	22606	21094
rejected %	16%	16%	14%	9%	14%	14%

	ccd 4	ccd 5	ccd 6	ccd 7	ccd 8	ccd 9
grade 0 events	26272	34977	36306	61450	49902	39301
	20%	9%	23%	16%	30%	26%
grade 1 events	121	807	159	156	219	157
	0%	0%	0%	0%	0%	0%
grade 2 events	56695	118916	62873	94856	53556	56242
	43%	32%	40%	25%	33%	37%
grade 3 events	2778	16469	3721	29103	5343	4157
	2%	4%	2%	7%	3%	2%
grade 4 events	2661	14819	3814	26097	5455	4156
	2%	4%	2%	6%	3%	2%
grade 5 events	1070	6269	1358	5384	1403	1289
	0%	1%	0%	1%	0%	0%
grade 6 events	19896	123521	26500	126366	24247	24142
	15%	33%	16%	33%	15%	16%
grade 7 events	20623	52788	21923	31053	20984	19648
	15%	14%	13%	8%	13%	13%

2.2 Compared Parameters

Parameter	Planned	Actual	Parameter	Planned	Actual
Instrument	ACIS	ACIS	Obspar format version number	6	6
Detector	ACIS-456789	ACIS-456789	Obspar file type	PREDICTED	ACTUAL
Grating	NONE	NONE	Obspar update status	NONE	UPDATED
Data mode	FAINT	FAINT	Number of optional ACIS chips dropped	0	0
Observation mode	SECONDARY	SECONDARY	On-chip summing requested	N	N
Pointing RA	0	268.1984779227524	Subarray requested	NONE	NONE
Pointing Dec	0	-61.50543250784911	Alternating exposures requested	N	N
Pointing Roll	0.0	269.2770717471963	Primary exposure time	3.2	3.2
SIM focus pos (mm)	-1.429586	-0.7809083437167272			
SIM defocus (mm)	0.1037507710433287	0.7524282956875696			
SIM translation stage pos (mm)	250.455976	250.466033080201			
SIM translation stage offset (mm)	0	-0.01005468664627074			
Observation start time	54361737.215532	54361736.190531			
Observation start date	1999-09-22T04:28:57	1999-09-22T04:28:56			
Observation end time	54375550.116028	54375549.091026			
Observation end date	1999-09-22T08:19:10	1999-09-22T08:19:09			
Read mode	TIMED	TIMED			

2.3 Star Slots

2.4 FID Slots

A Summary

A.1 Status

V&V Scientist	Joy Nichols
V&V Date (YYYY-MM-DD)	2010.09.30
V&V Edition	1
V&V Disposition and Status	OK
V&V Charge Time	3.4095671942756

A.2 Comments

This obsid originally appeared in telemetry with number 1311. It is documented in the spacecraft load as obsid 1311. Because this obsid was previously used for a different instrument configuration, the telemetry file was edited to change the obsid to 62864. The focal plane temperature is approximately -110 C during this observation.