

# V&V Reference Report

## L2 ASCDS Version : 8.3.4

Observation 62503 - L2 Version 6  
Chandra X-Ray Center

L2 Processing Date : Dec 15 2010

## Contents

<b>1</b>	<b>Front</b>	<b>2</b>
<b>2</b>	<b>OBI</b>	<b>3</b>
2.1	OBI . . . . .	3
2.1.1	Images . . . . .	3
2.1.2	Bias . . . . .	3
2.1.3	Parameters . . . . .	4
2.1.4	Events . . . . .	4
2.2	Compared Parameters . . . . .	5
2.3	Star Slots . . . . .	6
2.4	FID Slots . . . . .	6
<b>A</b>	<b>Summary</b>	<b>7</b>
A.1	Status . . . . .	7
A.2	Comments . . . . .	7

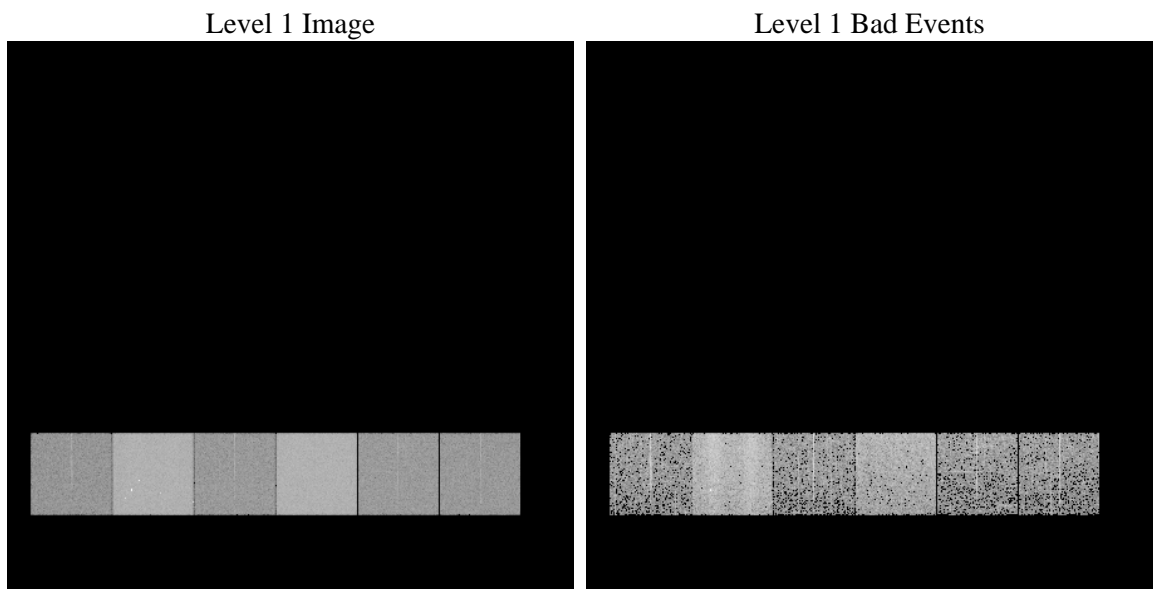
# 1 Front

seq_num	&#160	Sequence number
obs_id	62503	Observation id
title	ACIS-456789 diagnostics	Proposal title
observer	CHANDRA engineering request/realtime commanding	Principal investig
object	&#160	Source name
dtcycle	0	&#160
cycle	P	events from which exps? Prim/Second/Both
ra_targ	0.0	Observer's specified target RA
dec_targ	0.0	Observer's specified target Dec
ra_nom	119.95634142767	Nominal RA
dec_nom	-66.576891436476	Nominal Dec
roll_nom	94.917576206791	Nominal Roll
revision	6	Processing version of data
ontime	1457.7026793957	Sum of GTIs [s]
livetime	1439.244370346	Livetime [s]
ontime4	579.50719973445	Sum of GTIs [s]
ontime5	1561.3816188052	Sum of GTIs [s]
ontime6	631.3227699101	Sum of GTIs [s]
ontime7	1457.7026793957	Sum of GTIs [s]
ontime8	654.09207008779	Sum of GTIs [s]
ontime9	640.92268013954	Sum of GTIs [s]
l2events	489193	Number of level 2 events

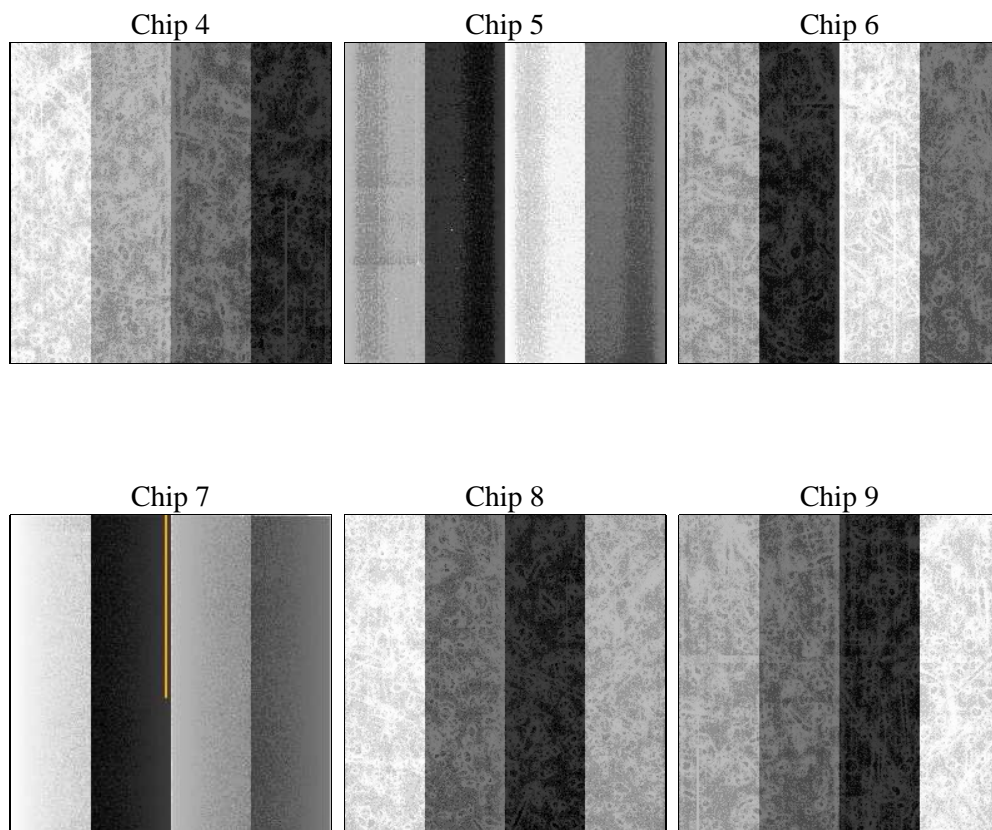
## 2 OBI

### 2.1 OBI

#### 2.1.1 Images



#### 2.1.2 Bias



### 2.1.3 Parameters

obi_num	0	Obi number	sched_exp_time	0.0	Scheduled observation exposure time
ascdsver	8.3.4	ASCDS version number	ontime	1457.7026793957	Sum of GTIs [s]
caldsver	4.4.0	&#160	ontime4	579.50719973445	Sum of GTIs [s]
date	2010-12-15T17:44:18	Date and time of file creation	ontime5	1561.3816188052	Sum of GTIs [s]
revision	4	Processing version of data	ontime6	631.3227699101	Sum of GTIs [s]
			ontime7	1457.7026793957	Sum of GTIs [s]
			ontime8	654.09207008779	Sum of GTIs [s]
			ontime9	640.92268013954	Sum of GTIs [s]
			l1events	595803	Number of level 1 events

### 2.1.4 Events

	ccd 4	ccd 5	ccd 6	ccd 7	ccd 8	ccd 9		ccd 4	ccd 5	ccd 6	ccd 7	ccd 8	ccd 9
level 1 events	61184	160554	70495	162142	72900	68528	grade 0 events	12269	16538	16883	26907	22428	18604
rejected events	11866	29912	12222	21088	12119	11472		20%	10%	23%	16%	30%	27%
rejected %	19%	18%	17%	13%	16%	16%	grade 1 events	46	101	70	65	104	75
								0%	0%	0%	0%	0%	0%
							grade 2 events	27201	52888	28122	41168	24721	25711
								44%	32%	39%	25%	33%	37%
							grade 3 events	1324	7529	1641	12643	2390	1887
								2%	4%	2%	7%	3%	2%
							grade 4 events	1189	6474	1758	11455	2377	1944
								1%	4%	2%	7%	3%	2%
							grade 5 events	497	2602	566	2229	605	519
								0%	1%	0%	1%	0%	0%
							grade 6 events	9258	52654	11930	54535	11008	10833
								15%	32%	16%	33%	15%	15%
							grade 7 events	9400	21768	9525	13140	9267	8955
								15%	13%	13%	8%	12%	13%

## 2.2 Compared Parameters

Parameter	Planned	Actual	Parameter	Planned	Actual
Instrument	ACIS	ACIS	Obspar format version number	6	6
Detector	ACIS-456789	ACIS-456789	Obspar file type	PREDICTED	ACTUAL
Grating	NONE	NONE	Obspar update status	NONE	UPDATED
Data mode	FAINT	FAINT	On-chip summing requested	N	N
Observation mode	SECONDARY	SECONDARY	Subarray requested	NONE	NONE
Pointing RA	0	119.9563414276734	Alternating exposures requested	N	N
Pointing Dec	0	-66.5768914364764	Primary exposure time	3.2	3.2
Pointing Roll	0.0	94.91757620679076			
SIM focus pos (mm)	-0.684267	-0.7809083437167272			
SIM defocus (mm)	0	0.7524282956875696			
SIM translation stage pos (mm)	-190.132523	250.466033080201			
SIM translation stage offset (mm)	0	-0.01005468664627074			
Observation start time	56469143.190184	56469142.421729			
Observation start date	1999-10-16T13:52:23	1999-10-16T13:52:22			
Observation end time	56473864.340354	56473863.571899			
Observation end date	1999-10-16T15:11:04	1999-10-16T15:11:03			
Read mode	TIMED	TIMED			

## **2.3 Star Slots**

## **2.4 FID Slots**

# A Summary

## A.1 Status

V&V Scientist	Beth Sundheim
V&V Date (YYYY-MM-DD)	2010.12.15
V&V Edition	1
V&V Disposition and Status	OK
V&V Charge Time	1.4577026793957

## A.2 Comments

The focal plane temperature is approximately -110C during this observation.

The ACIS CTI correction has not been calibrated at this temperature because it was early in the mission, and ACIS had not yet been lowered to the standard -119.7 C. Both front- and back-illuminated chips are affected. However, a T\_GAIN correction has been applied to the BI chips

(ACIS-5 and ACIS-7) data included here.

==

One CCD bias map was incomplete because of data gaps in telemetry. The bias map for chip 9 was reconstructed using scaled data from a comparable bias map for another observation to fill these gaps.