

V&V Reference Report

L2 ASCDS Version : 8.2.1

Observation 62425 - L2 Version 3

Chandra X-Ray Center

L2 Processing Date : Sep 23 2010

Contents

1	Front	2
2	OBI	3
2.1	OBI	3
2.1.1	Images	3
2.1.2	Bias	3
2.1.3	Parameters	4
2.1.4	Events	4
2.2	Compared Parameters	5
2.3	Star Slots	6
2.4	FID Slots	6
A	Summary	7
A.1	Status	7
A.2	Comments	7

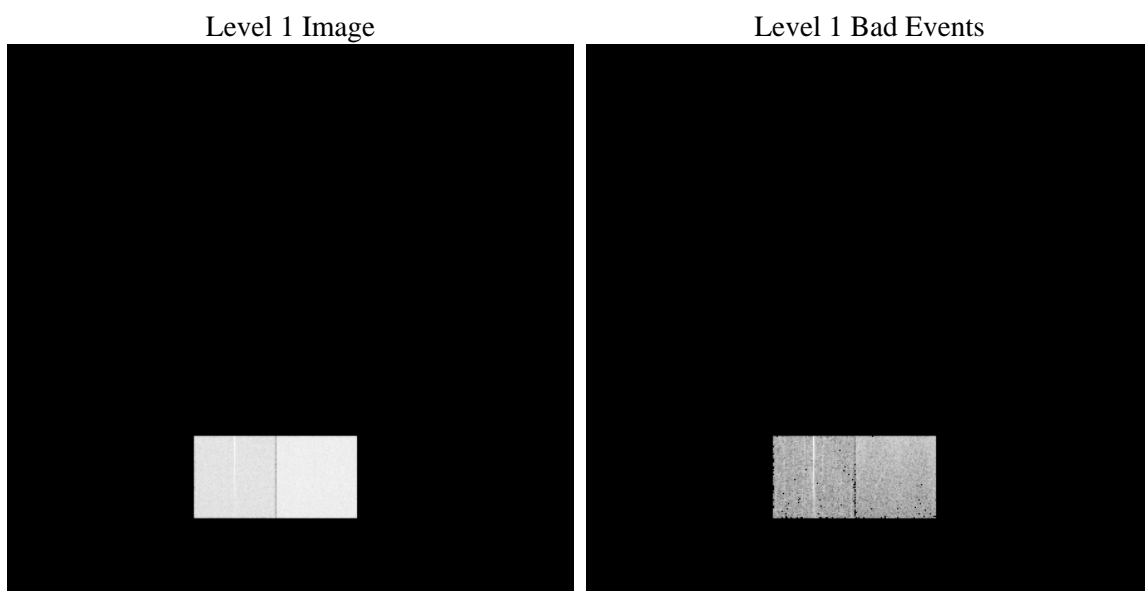
1 Front

seq_num	 	Sequence number
obs_id	62425	Observation id
title	ACIS-456789 diagnostics	Proposal title
observer	CHANDRA engineering request/realtime commanding	Principal investig
object	 	Source name
dtcycle	0	
cycle	P	events from which exps? Prim/Second/Both
ra_targ	0.0	Observer's specified target RA
dec_targ	0.0	Observer's specified target Dec
ra_nom	79.176271026469	Nominal RA
dec_nom	46.003306168375	Nominal Dec
roll_nom	95.867324968898	Nominal Roll
revision	3	Processing version of data
ontime	3652.6021209806	Sum of GTIs [s]
livetime	3606.3506735918	Livetime [s]
ontime4	2100.1818239763	Sum of GTIs [s]
ontime5	3652.6021209806	Sum of GTIs [s]
ontime6	2386.4836433604	Sum of GTIs [s]
ontime7	3652.6021209806	Sum of GTIs [s]
ontime8	2336.7733552232	Sum of GTIs [s]
ontime9	2343.2558744177	Sum of GTIs [s]
l2events	606231	Number of level 2 events

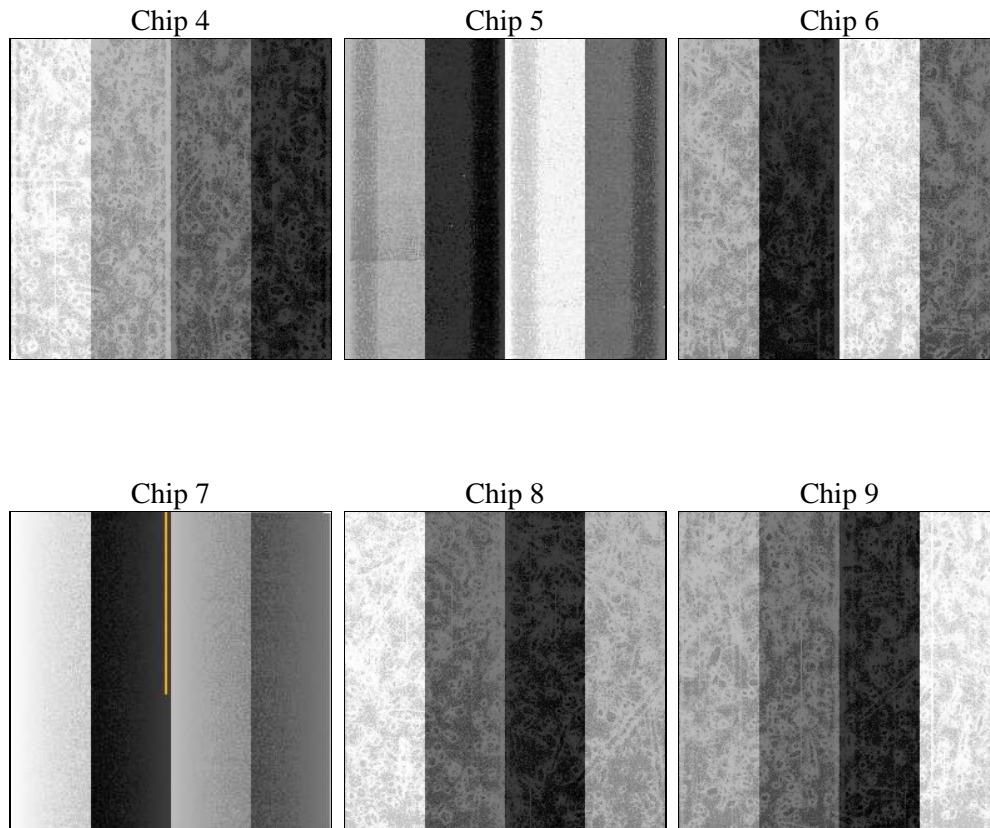
2 OBI

2.1 OBI

2.1.1 Images



2.1.2 Bias



2.1.3 Parameters

obi_num	0	Obi number
ascdsver	8.3.2.1	ASCDS version number
caldsver	4.3.1	
date	2010-09-23T18:14:43	Date and time of file creation
revision	3	Processing version of data

sched_exp_time	0.0	Scheduled observation exposure time
ontime	3652.6021209806	Sum of GTIs [s]
ontime4	2100.1818239763	Sum of GTIs [s]
ontime5	3652.6021209806	Sum of GTIs [s]
ontime6	2386.4836433604	Sum of GTIs [s]
ontime7	3652.6021209806	Sum of GTIs [s]
ontime8	2336.7733552232	Sum of GTIs [s]
ontime9	2343.2558744177	Sum of GTIs [s]
l1events	678556	Number of level 1 events

2.1.4 Events

	ccd 4	ccd 5	ccd 6	ccd 7	ccd 8	ccd 9
level 1 events	0	0	275261	403295	0	0
rejected events	0	0	30721	35414	0	0
rejected %	0%	0%	11%	8%	0%	0%

	ccd 4	ccd 5	ccd 6	ccd 7	ccd 8	ccd 9
grade 0 events	0	0	128993	72406	0	0
	0%	0%	46%	17%	0%	0%
grade 1 events	0	0	763	189	0	0
	0%	0%	0%	0%	0%	0%
grade 2 events	0	0	44340	107362	0	0
	0%	0%	16%	26%	0%	0%
grade 3 events	0	0	14893	29122	0	0
	0%	0%	5%	7%	0%	0%
grade 4 events	0	0	14822	28826	0	0
	0%	0%	5%	7%	0%	0%
grade 5 events	0	0	2113	5650	0	0
	0%	0%	0%	1%	0%	0%
grade						

2.2 Compared Parameters

Parameter	Planned	Actual	Parameter	Planned	Actual
Instrument	ACIS	ACIS	Obspar format version number	6	6
Detector	ACIS-456789	ACIS-456789	Obspar file type	PREDICTED	ACTUAL
Grating	NONE	NONE	Obspar update status	NONE	UPDATED
Data mode	FAINT	FAINT	On-chip summing requested	N	N
Observation mode	SECONDARY	SECONDARY	Subarray requested	NONE	NONE
Pointing RA	0	79.1762710264686	Alternating exposures requested	N	N
Pointing Dec	0	46.00330616837455	Primary exposure time	3.2	3.2
Pointing Roll	0.0	95.86732496889826			
SIM focus pos (mm)	-0.684267	-1.27598394818995			
SIM defocus (mm)	0	0.2573526912143473			
SIM translation stage pos (mm)	-190.132523	250.466033080201			
SIM translation stage offset (mm)	0	-0.01005468664627074			
Observation start time	53559699.03022	53559698.26175			
Observation start date	1999-09-12T21:41:39	1999-09-12T21:41:38			
Observation end time	53565188.930417	53565188.161947			
Observation end date	1999-09-12T23:13:09	1999-09-12T23:13:08			
Read mode	TIMED	TIMED			

2.3 Star Slots

2.4 FID Slots

A Summary

A.1 Status

V&V Scientist	Joy Nichols
V&V Date (YYYY-MM-DD)	2010.10.01
V&V Edition	1
V&V Disposition and Status	OK
V&V Charge Time	3.6526021209806

A.2 Comments

A spatial exclusion window was specified for this observation. Although 6 CCD chips were active, only events from chips 6 and 7 were telemetered.