

V&V Reference Report

L2 ASCDS Version : 8.3.3

Observation 62375 - L2 Version 4
Chandra X-Ray Center

L2 Processing Date : Nov 18 2010

Contents

1	Front	2
2	OBI	3
2.1	OBI	3
2.1.1	Images	3
2.1.2	Bias	3
2.1.3	Parameters	4
2.1.4	Events	4
2.2	Compared Parameters	5
2.3	Star Slots	6
2.4	FID Slots	6
A	Summary	7
A.1	Status	7
A.2	Comments	7

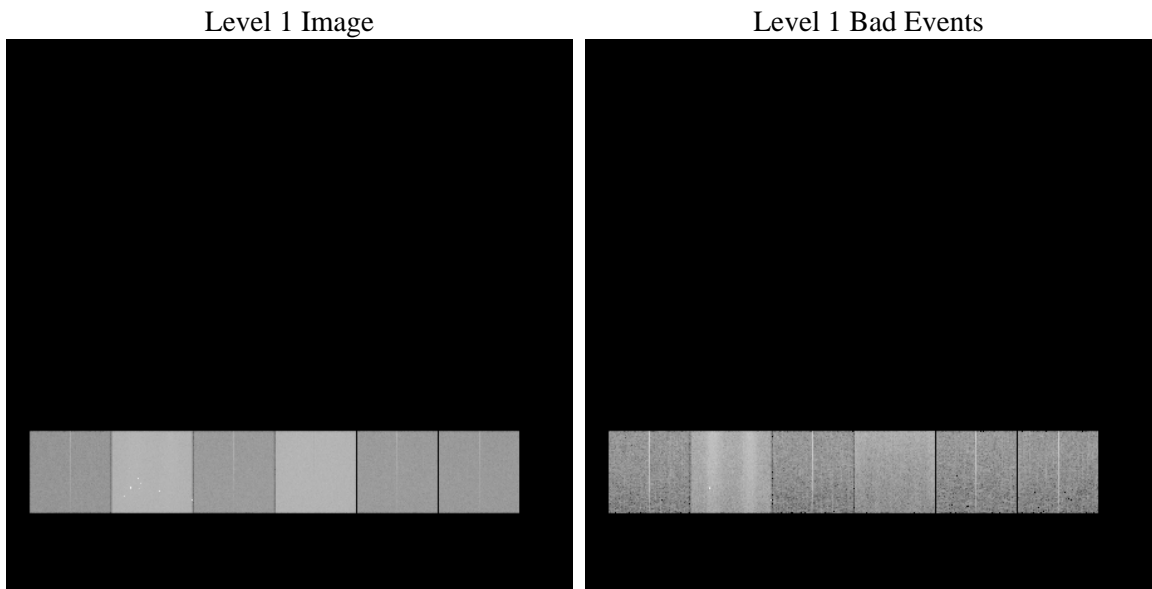
1 Front

seq_num	 	Sequence number
obs_id	62375	Observation id
title	ACIS-456789 diagnostics	Proposal title
observer	CHANDRA engineering request/realtime commanding	Principal investig
object	 	Source name
dtcycle	0	
cycle	P	events from which exps? Prim/Second/Both
ra_targ	0.0	Observer's specified target RA
dec_targ	0.0	Observer's specified target Dec
ra_nom	1.361116206363	Nominal RA
dec_nom	-0.038108668558184	Nominal Dec
roll_nom	359.52592940018	Nominal Roll
revision	4	Processing version of data
ontime	7197.5325156823	Sum of GTIs [s]
livetime	7106.3930251349	Livetime [s]
ontime4	2547.4561979398	Sum of GTIs [s]
ontime5	7651.2305928394	Sum of GTIs [s]
ontime6	2959.0682188869	Sum of GTIs [s]
ontime7	7197.5325156823	Sum of GTIs [s]
ontime8	2903.9705387801	Sum of GTIs [s]
ontime9	2900.7295586243	Sum of GTIs [s]
l2events	2402175	Number of level 2 events

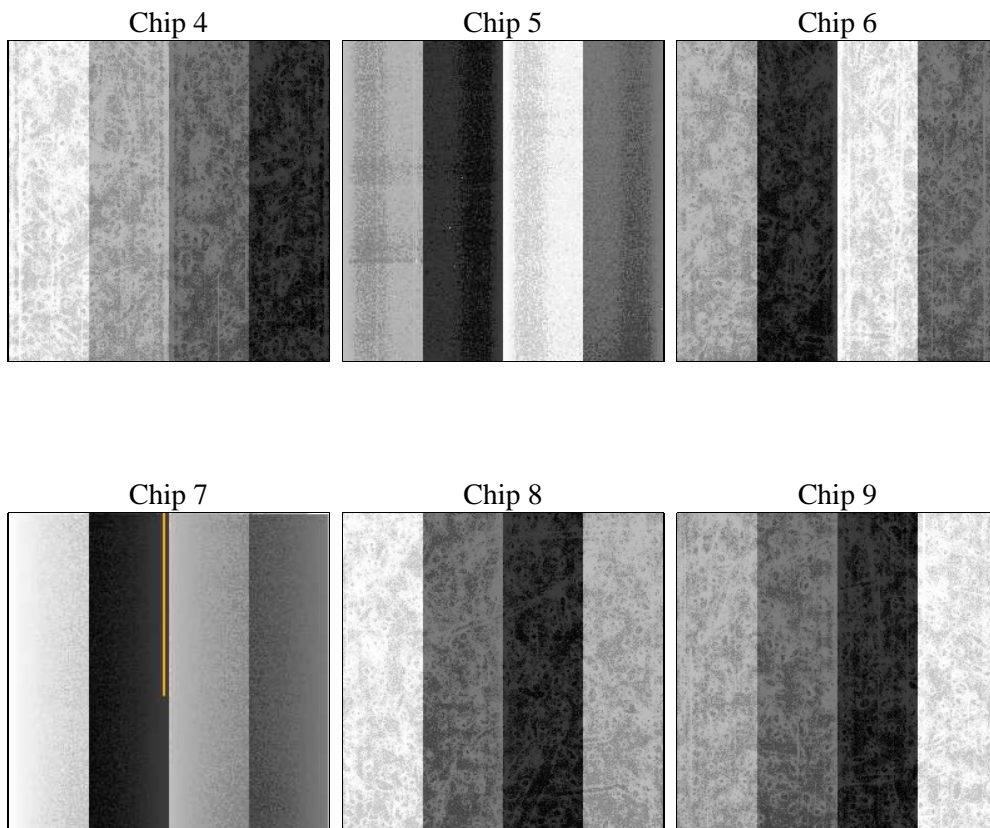
2 OBI

2.1 OBI

2.1.1 Images



2.1.2 Bias



2.1.3 Parameters

obi_num	0	Obi number	sched_exp_time	0.0	Scheduled observation exposure time
ascdsver	8.3.3	ASCDS version number	ontime	7197.5325156823	Sum of GTIs [s]
caldsver	4.4.0	 	ontime4	2547.4561979398	Sum of GTIs [s]
date	2010-11-18T10:42:57	Date and time of file creation	ontime5	7651.2305928394	Sum of GTIs [s]
revision	4	Processing version of data	ontime6	2959.0682188869	Sum of GTIs [s]
			ontime7	7197.5325156823	Sum of GTIs [s]
			ontime8	2903.9705387801	Sum of GTIs [s]
			ontime9	2900.7295586243	Sum of GTIs [s]
			l1events	2826534	Number of level 1 events

2.1.4 Events

	ccd 4	ccd 5	ccd 6	ccd 7	ccd 8	ccd 9		ccd 4	ccd 5	ccd 6	ccd 7	ccd 8	ccd 9
level 1 events	270085	786107	329658	798485	329408	312791	grade 0 events	55141	81258	80855	135615	101343	84185
rejected events	47931	122846	49157	75094	48360	47011		20%	10%	24%	16%	30%	26%
rejected %	17%	15%	14%	9%	14%	15%	grade 1 events	251	296	355	370	431	411
								0%	0%	0%	0%	0%	0%
							grade 2 events	115214	256768	128482	200025	108079	114308
								42%	32%	38%	25%	32%	36%
							grade 3 events	5560	36784	8412	63318	10858	8880
								2%	4%	2%	7%	3%	2%
							grade 4 events	5511	31840	8263	57536	10961	8933
								2%	4%	2%	7%	3%	2%
							grade 5 events	2314	13421	2765	11101	2974	2744
								0%	1%	0%	1%	0%	0%
							grade 6 events	40728	256611	54489	266897	49807	49474
								15%	32%	16%	33%	15%	15%
							grade 7 events	45366	109129	46037	63623	44955	43856
								16%	13%	13%	7%	13%	14%

2.2 Compared Parameters

Parameter	Planned	Actual	Parameter	Planned	Actual
Instrument	ACIS	ACIS	Obspar format version number	6	6
Detector	ACIS-456789	ACIS-456789	Obspar file type	PREDICTED	ACTUAL
Grating	NONE	NONE	Obspar update status	OVERRIDE	OVERRIDE
Data mode	FAINT	FAINT	On-chip summing requested	N	N
Observation mode	SECONDARY	SECONDARY	Subarray requested	NONE	NONE
Pointing RA	0	1.361116206363023	Alternating exposures requested	N	N
Pointing Dec	0	-0.03810866855818362	Primary exposure time	3.2	3.2
Pointing Roll	0.0	359.5259294001814			
SIM focus pos (mm)	-0.78090834371673	-0.78090834371673			
SIM defocus (mm)	-0.0966408767208693	-0.0966408767208693			
SIM translation stage pos (mm)	250.4459185578	250.4459185578			
SIM translation stage offset (mm)	-440.5784416617672	-440.5784416617672			
Observation start time	54866161.9	54866161.9			
Observation start date	1999-09-28T00:36:02	1999-09-28T00:36:01			
Observation end time	54882365.28	54882365.28			
Observation end date	1999-09-28T05:06:05	1999-09-28T05:06:05			
Read mode	TIMED	TIMED			

2.3 Star Slots

2.4 FID Slots

A Summary

A.1 Status

V&V Scientist	Joy Nichols
V&V Date (YYYY-MM-DD)	2010.11.18
V&V Edition	1
V&V Disposition and Status	OK
V&V Charge Time	7.1975325156823

A.2 Comments

The focal plane temperature is approximately -110 C during this observation. This reprocessing of the data applies no CTI correction because none is available for this temperature at present.

The ACIS CTI correction has not been calibrated at this temperature, because it was early in the mission, and ACIS had not yet been lowered to the standard -119.7 C. Both front and back illuminated chips are affected. However a T_GAIN correction has been applied to the BI chips (ACIS-5 and ACIS-7) data included here.

The ACIS spectral response calibration is less accurate at these warmer temperatures than it is at -119.7 C. Users whose science objectives depend on the most accurate spectral response (ie: fitting line-rich spectra) may notice an effect. Users whose science objectives do not depend on the most accurate spectral response should not notice an effect.