

V&V Reference Report

L2 ASCDS Version : 8.3.2.1

Observation 62368 - L2 Version 3

Chandra X-Ray Center

L2 Processing Date : Sep 28 2010

Contents

1	Front	2
2	OBI	3
2.1	OBI	3
2.1.1	Images	3
2.1.2	Bias	3
2.1.3	Parameters	4
2.1.4	Events	4
2.2	Compared Parameters	5
2.3	Star Slots	6
2.4	FID Slots	6
A	Summary	7
A.1	Status	7
A.2	Comments	7

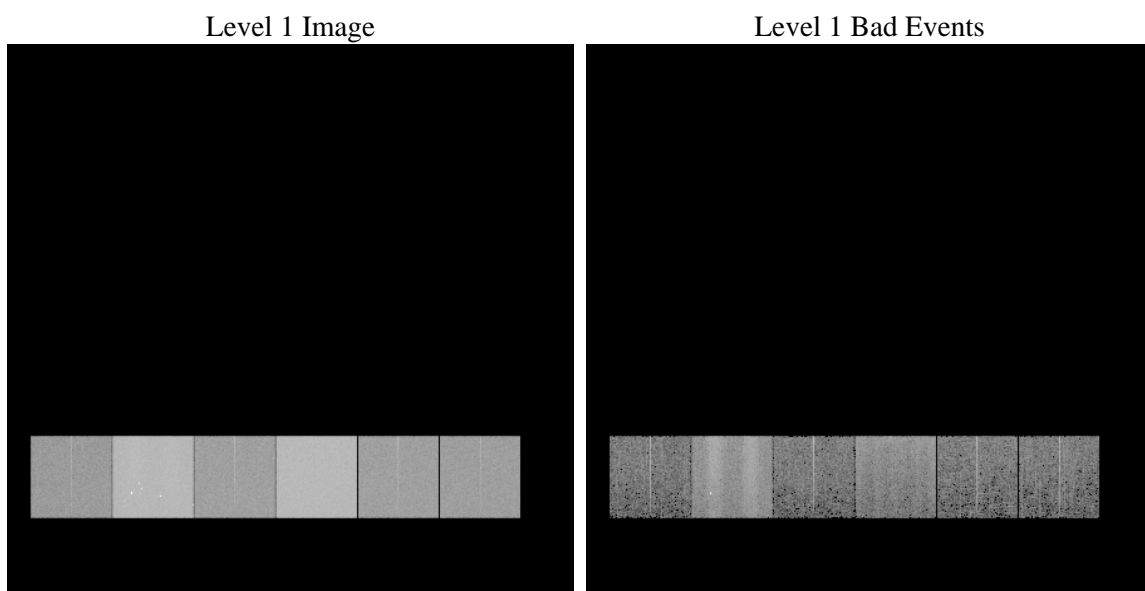
1 Front

seq_num	 	Sequence number
obs_id	62368	Observation id
title	ACIS-456789 diagnostics	Proposal title
observer	CHANDRA engineering request/realtime commanding	Principal investig
object	 	Source name
dtcycle	0	
cycle	P	events from which exps? Prim/Second/Both
ra_targ	0.0	Observer's specified target RA
dec_targ	0.0	Observer's specified target Dec
ra_nom	112.14961975058	Nominal RA
dec_nom	80.027474955905	Nominal Dec
roll_nom	76.332365133604	Nominal Roll
revision	3	Processing version of data
ontime	3944.2143252045	Sum of GTIs [s]
livetime	3894.270308498	Livetime [s]
ontime4	1432.4976221547	Sum of GTIs [s]
ontime5	4197.8245843574	Sum of GTIs [s]
ontime6	1650.2947482616	Sum of GTIs [s]
ontime7	3944.2143252045	Sum of GTIs [s]
ontime8	1620.518736288	Sum of GTIs [s]
ontime9	1594.5903863013	Sum of GTIs [s]
l2events	1288513	Number of level 2 events

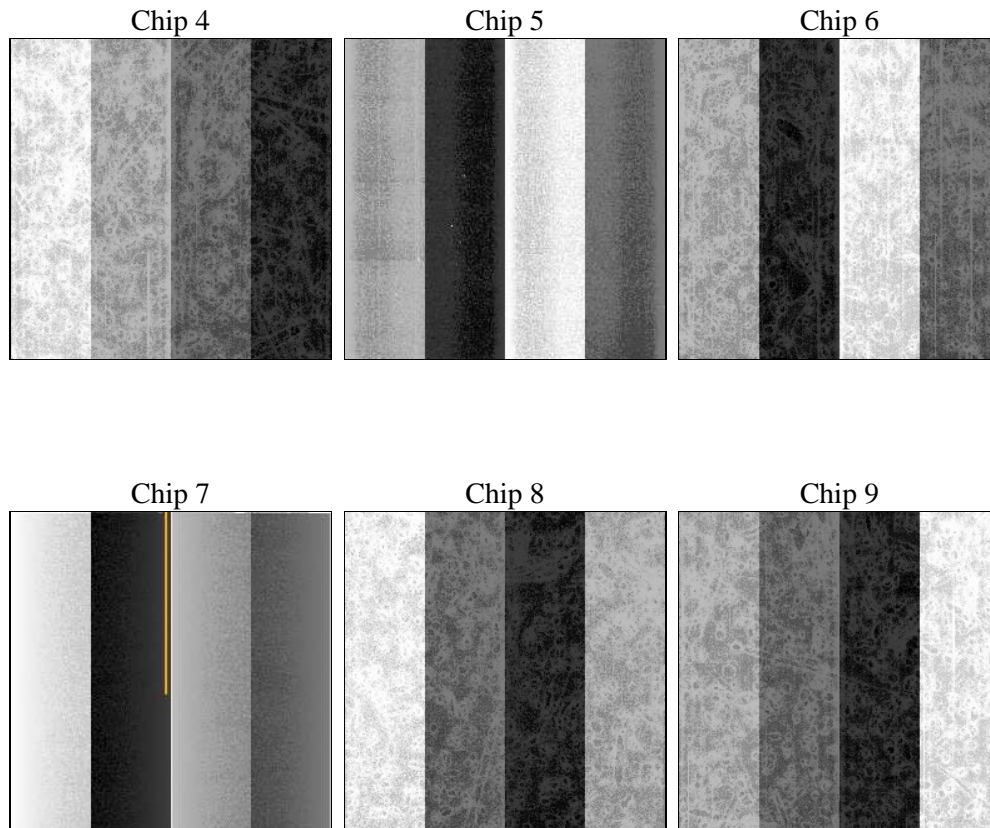
2 OBI

2.1 OBI

2.1.1 Images



2.1.2 Bias



2.1.4 Events

obi_num	0	Obi number	<table><tr><td>sched_exp_time</td><td>0.0</td><td>Scheduled observation exposure time</td></tr><tr><td>ontime</td><td>3944.2143252045</td><td>Sum of GTIs [s]</td></tr><tr><td>ontime4</td><td>1432.4976221547</td><td>Sum of GTIs [s]</td></tr><tr><td>ontime5</td><td>4197.8245843574</td><td>Sum of GTIs [s]</td></tr><tr><td>ontime6</td><td>1650.2947482616</td><td>Sum of GTIs [s]</td></tr><tr><td>ontime7</td><td>3944.2143252045</td><td>Sum of GTIs [s]</td></tr><tr><td>ontime8</td><td>1620.518736288</td><td>Sum of GTIs [s]</td></tr><tr><td>ontime9</td><td>1594.5903863013</td><td>Sum of GTIs [s]</td></tr><tr><td>l1events</td><td>1521729</td><td>Number of level 1 events</td></tr></table>	sched_exp_time	0.0	Scheduled observation exposure time	ontime	3944.2143252045	Sum of GTIs [s]	ontime4	1432.4976221547	Sum of GTIs [s]	ontime5	4197.8245843574	Sum of GTIs [s]	ontime6	1650.2947482616	Sum of GTIs [s]	ontime7	3944.2143252045	Sum of GTIs [s]	ontime8	1620.518736288	Sum of GTIs [s]	ontime9	1594.5903863013	Sum of GTIs [s]	l1events	1521729	Number of level 1 events
sched_exp_time	0.0	Scheduled observation exposure time																												
ontime	3944.2143252045	Sum of GTIs [s]																												
ontime4	1432.4976221547	Sum of GTIs [s]																												
ontime5	4197.8245843574	Sum of GTIs [s]																												
ontime6	1650.2947482616	Sum of GTIs [s]																												
ontime7	3944.2143252045	Sum of GTIs [s]																												
ontime8	1620.518736288	Sum of GTIs [s]																												
ontime9	1594.5903863013	Sum of GTIs [s]																												
l1events	1521729	Number of level 1 events																												
ascdsver	8.3.2.1	ASCDS version number																												
caldsver	4.3.1	 																												
date	2010-09-28T21:17:39	Date and time of file creation																												
revision	3	Processing version of data																												

2.1.4 Events

	ccd 4	ccd 5	ccd 6	ccd 7	ccd 8	ccd 9
level 1 events	146739	421879	178067	428619	178710	167715
rejected events	24729	71576	25606	42439	25919	25121
rejected %	16%	16%	14%	9%	14%	14%

	ccd 4	ccd 5	ccd 6	ccd 7	ccd 8	ccd 9
grade 0 events	29209	37293	41523	69836	53889	44285
	19%	8%	23%	16%	30%	26%
grade 1 events	138	144	180	195	235	185
	0%	0%	0%	0%	0%	0%
grade 2 events	64318	135657	72330	108361	60110	62585
	43%	32%	40%	25%	33%	37%
grade 3 events	2997	17907	4408	33028	5782	4602
	2%	4%	2%	7%	3%	2%
grade 4 events	2833	15425	4244	30141	5715	4559
	1%	3%	2%	7%	3%	2%
grade 5 events	1254	7261	1448	6037	1645	1480
	0%	1%	0%	1%	0%	0%
grade 6 events	22653	144289	30252	144814	27295	26563
	15%	34%	16%	33%	15%	15%
grade 7 events	23337	63903	23682	36207	24039	23456
	15%	15%	13%	8%	13%	13%

2.2 Compared Parameters

Parameter	Planned	Actual	Parameter	Planned	Actual
Instrument	ACIS	ACIS	Obspar format version number	6	6
Detector	ACIS-456789	ACIS-456789	Obspar file type	PREDICTED	ACTUAL
Grating	NONE	NONE	Obspar update status	NONE	UPDATED
Data mode	FAINT	FAINT	On-chip summing requested	N	N
Observation mode	SECONDARY	SECONDARY	Subarray requested	NONE	NONE
Pointing RA	0	112.1496197505788	Alternating exposures requested	N	N
Pointing Dec	0	80.02747495590498	Primary exposure time	0.000000	3.2
Pointing Roll	0.0	76.33236513360362			
SIM focus pos (mm)	-0.684267	-0.7809083437167272			
SIM defocus (mm)	0	0.7524282956875696			
SIM translation stage pos (mm)	-190.132523	250.466033080201			
SIM translation stage offset (mm)	0	-0.01005468664627074			
Observation start time	55323289.498	55323288.730468			
Observation start date	1999-10-03T07:34:49	1999-10-03T07:34:48			
Observation end time	55333125.399	55333124.630822			
Observation end date	1999-10-03T10:18:45	1999-10-03T10:18:44			
Read mode	TIMED	TIMED			

2.3 Star Slots

2.4 FID Slots

A Summary

A.1 Status

V&V Scientist	Joy Nichols
V&V Date (YYYY-MM-DD)	2010.10.04
V&V Edition	1
V&V Disposition and Status	OK
V&V Charge Time	3.9442143252045

A.2 Comments

The focal plane temperature is approximately -110 C during this observation.