

# V&V Reference Report

## L2 ASCDS Version : 8.1.1

Observation 62365 - L2 Version 3

Chandra X-Ray Center

L2 Processing Date : Nov 19 2009

## Contents

<b>1</b>	<b>Front</b>	<b>2</b>
<b>2</b>	<b>OBI</b>	<b>3</b>
2.1	OBI . . . . .	3
2.1.1	Images . . . . .	3
2.1.2	Bias . . . . .	3
2.1.3	Parameters . . . . .	4
2.1.4	Events . . . . .	4
2.2	Compared Parameters . . . . .	5
2.3	Star Slots . . . . .	6
2.4	FID Slots . . . . .	6
<b>A</b>	<b>Summary</b>	<b>7</b>
A.1	Status . . . . .	7
A.2	Comments . . . . .	7

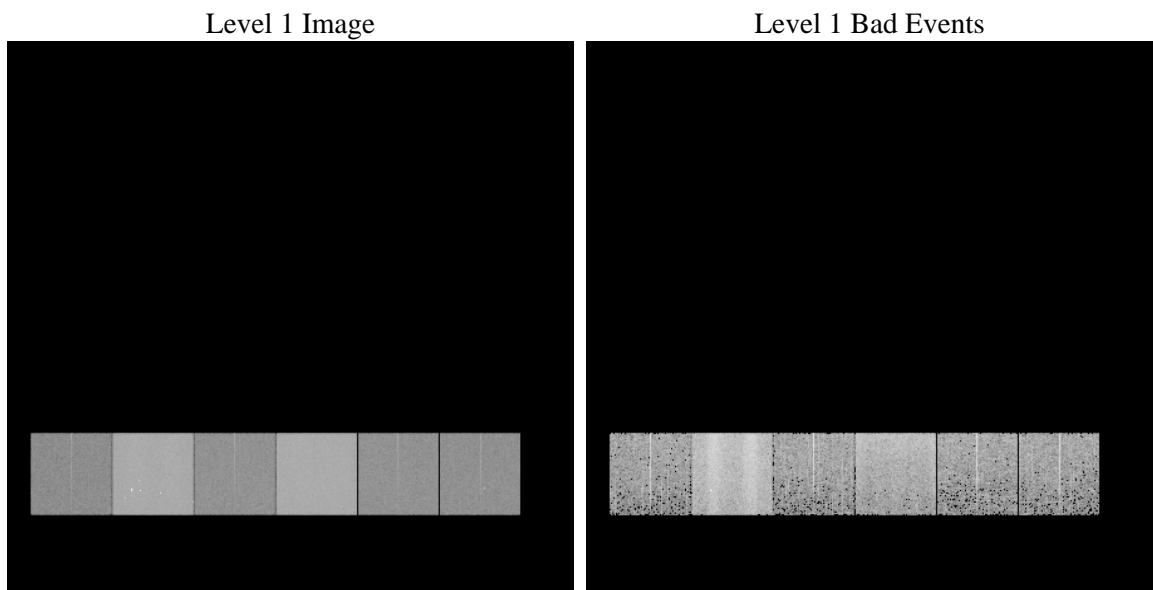
# 1 Front

seq_num	&#160	Sequence number
obs_id	62365	Observation id
title	ACIS-456789 diagnostics	Proposal title
observer	CHANDRA engineering request/realtime commanding	Principal investig
object	&#160	Source name
dtcycle	0	&#160
cycle	P	events from which exps? Prim/Second/Both
ra_targ	0.0	Observer's specified target RA
dec_targ	0.0	Observer's specified target Dec
ra_nom	112.14502785529	Nominal RA
dec_nom	80.027362391566	Nominal Dec
roll_nom	78.014422841885	Nominal Roll
revision	3	Processing version of data
ontime	3480.3223633468	Sum of GTIs [s]
livetime	3436.2524259836	Livetime [s]
ontime4	1260.2979939282	Sum of GTIs [s]
ontime5	3685.6484172642	Sum of GTIs [s]
ontime6	1432.1961844116	Sum of GTIs [s]
ontime7	3480.3223633468	Sum of GTIs [s]
ontime8	1409.4266847223	Sum of GTIs [s]
ontime9	1402.9857843518	Sum of GTIs [s]
l2events	1134994	Number of level 2 events

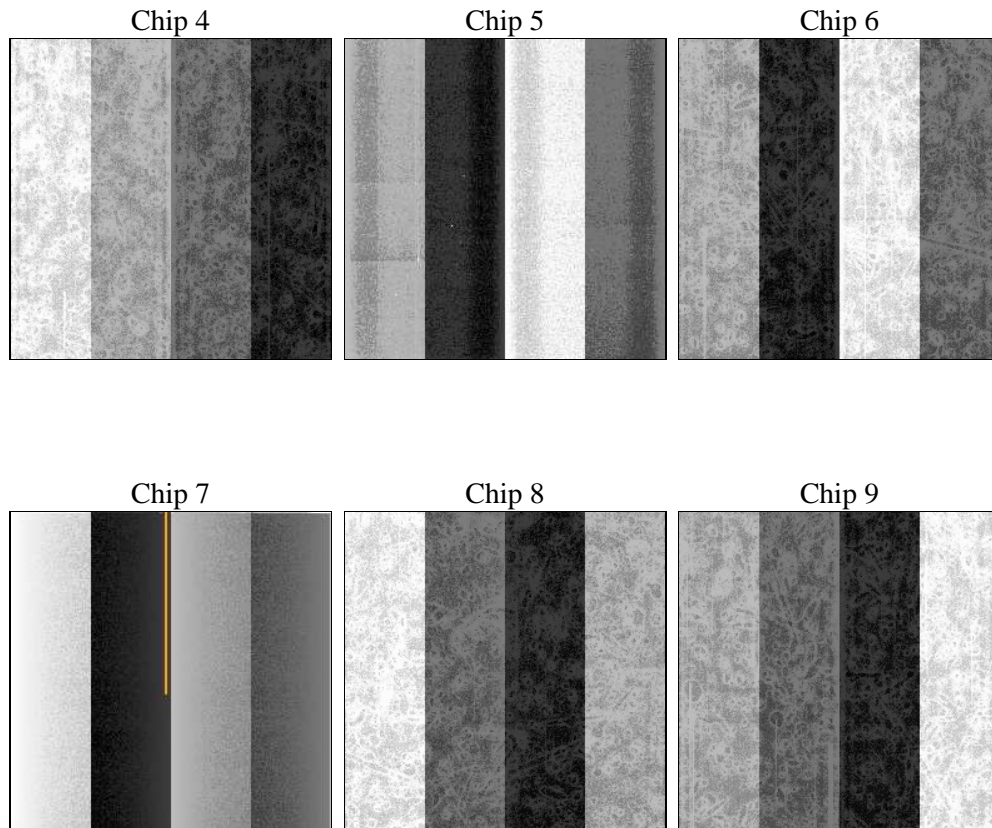
## 2 OBI

### 2.1 OBI

#### 2.1.1 Images



#### 2.1.2 Bias



### 2.1.3 Parameters

obi_num	0	Obi number		
ascdsver	8.1.1	ASCDS version number	sched_exp_time	0.0
caldsver	4.1.4	&#160		
date	2009-11-19T23:13:41	Date and time of file creation	ontime	3480.3223633468
revision	3	Processing version of data	ontime4	1260.2979939282
			ontime5	3685.6484172642
			ontime6	1432.1961844116
			ontime7	3480.3223633468
			ontime8	1409.4266847223
			ontime9	1402.9857843518
			l1events	1338717

### 2.1.4 Events

	ccd 4	ccd 5	ccd 6	ccd 7	ccd 8	ccd 9		ccd 4	ccd 5	ccd 6	ccd 7	ccd 8	ccd 9
level 1 events	129637	371248	156350	377284	156067	148131	grade 0 events	26268	37389	37958	63287	46682	39007
rejected events	22101	59357	23358	35937	23218	22392		20%	10%	24%	16%	29%	26%
rejected %	17%	15%	14%	9%	14%	15%	grade 1 events	130	226	157	155	177	178
								0%	0%	0%	0%	0%	0%
							grade 2 events	56507	120662	61386	95688	52523	55189
								43%	32%	39%	25%	33%	37%
							grade 3 events	2594	16487	3841	29504	5065	4108
								2%	4%	2%	7%	3%	2%
							grade 4 events	2527	14382	3808	26835	4858	4117
								1%	3%	2%	7%	3%	2%
							grade 5 events	1100	6207	1284	5363	1397	1372
								0%	1%	0%	1%	0%	0%
							grade 6 events	19640	123233	25999	126033	23721	23318
								15%	33%	16%	33%	15%	15%
							grade 7 events	20871	52662	21917	30419	21644	20842
								16%	14%	14%	8%	13%	14%

## 2.2 Compared Parameters

Parameter	Planned	Actual	Parameter	Planned	Actual
Instrument	ACIS	ACIS	Obspar format version number	6	6
Detector	ACIS-456789	ACIS-456789	Obspar file type	PREDICTED	ACTUAL
Grating	NONE	NONE	Obspar update status	NONE	UPDATED
Data mode	FAINT	FAINT	On-chip summing requested	N	N
Observation mode	SECONDARY	SECONDARY	Subarray requested	NONE	NONE
Pointing RA	0	112.1450278552916	Alternating exposures requested	N	N
Pointing Dec	0	80.02736239156634	Primary exposure time	0.000000	3.2
Pointing Roll	0.0	78.01442284188488			
SIM focus pos (mm)	-0.684267	-1.041718744158295			
SIM defocus (mm)	0	0.4916178952460017			
SIM translation stage pos (mm)	-190.132523	250.466033080201			
SIM translation stage offset (mm)	0	-0.01005468664627074			
Observation start time	55500013.854	55500013.086835			
Observation start date	1999-10-05T08:40:14	1999-10-05T08:40:13			
Observation end time	55519458.106	55519457.337535			
Observation end date	1999-10-05T14:04:18	1999-10-05T14:04:17			
Read mode	TIMED	TIMED			

## 2.3 Star Slots

## 2.4 FID Slots

# A Summary

## A.1 Status

V&V Scientist	Beth Sundheim
V&V Date (YYYY-MM-DD)	2010.08.13
V&V Edition	1
V&V Disposition and Status	OK
V&V Charge Time	3.4803223633468

## A.2 Comments

The focal plane temperature is approximately -110C during this observation.

The ACIS CTI correction has not been calibrated at this temperature because it was early in the mission, and ACIS had not yet been lowered to the standard -119.7 C. Both front- and back-illuminated chips are affected. However, a T\_GAIN correction has been applied to the BI chips

(ACIS-5 and ACIS-7) data included here.

The ACIS spectral response calibration is less accurate at these warmer temperatures than it is at -119.7 C. Users whose science objectives depend on the most accurate spectral response (ie: fitting line-rich spectra) may notice an effect. Users whose science objectives do not depend on the most accurate spectral response should not notice an effect.