

V&V Reference Report

L2 ASCDS Version : 8.1.1

Observation 62319 - L2 Version 4
Chandra X-Ray Center

L2 Processing Date : Nov 21 2009

Contents

1	Front	2
2	OBI	3
2.1	OBI	3
2.1.1	Images	3
2.1.2	Bias	3
2.1.3	Parameters	4
2.1.4	Events	4
2.2	Compared Parameters	5
2.3	Star Slots	6
2.4	FID Slots	6
A	Summary	7
A.1	Status	7
A.2	Comments	7

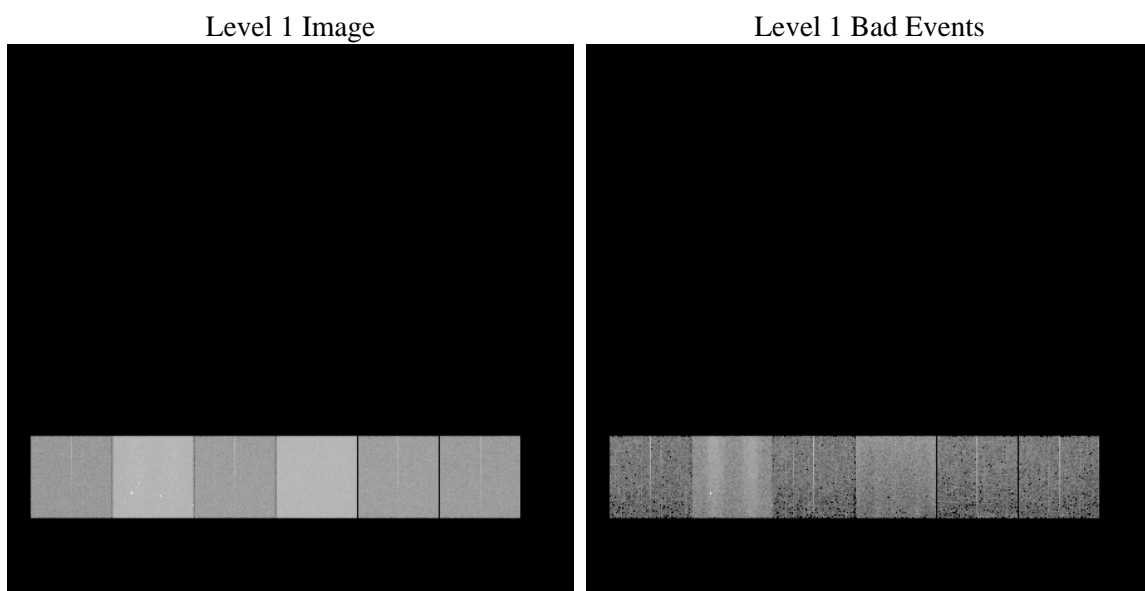
1 Front

seq_num	 	Sequence number
obs_id	62319	Observation id
title	ACIS-456789 diagnostics	Proposal title
observer	CHANDRA engineering request/realtime commanding	Principal investig
object	 	Source name
dtcycle	0	
cycle	P	events from which exps? Prim/Second/Both
ra_targ	0.0	Observer's specified target RA
dec_targ	0.0	Observer's specified target Dec
ra_nom	153.39017879352	Nominal RA
dec_nom	49.407754322241	Nominal Dec
roll_nom	64.328552086461	Nominal Roll
revision	4	Processing version of data
ontime	4039.1375608817	Sum of GTIs [s]
livetime	3987.9915690091	Livetime [s]
ontime4	1489.4404223859	Sum of GTIs [s]
ontime5	4295.1764594465	Sum of GTIs [s]
ontime6	1682.910354048	Sum of GTIs [s]
ontime7	4039.1375608817	Sum of GTIs [s]
ontime8	1726.0773529187	Sum of GTIs [s]
ontime9	1624.5715441406	Sum of GTIs [s]
l2events	1290136	Number of level 2 events

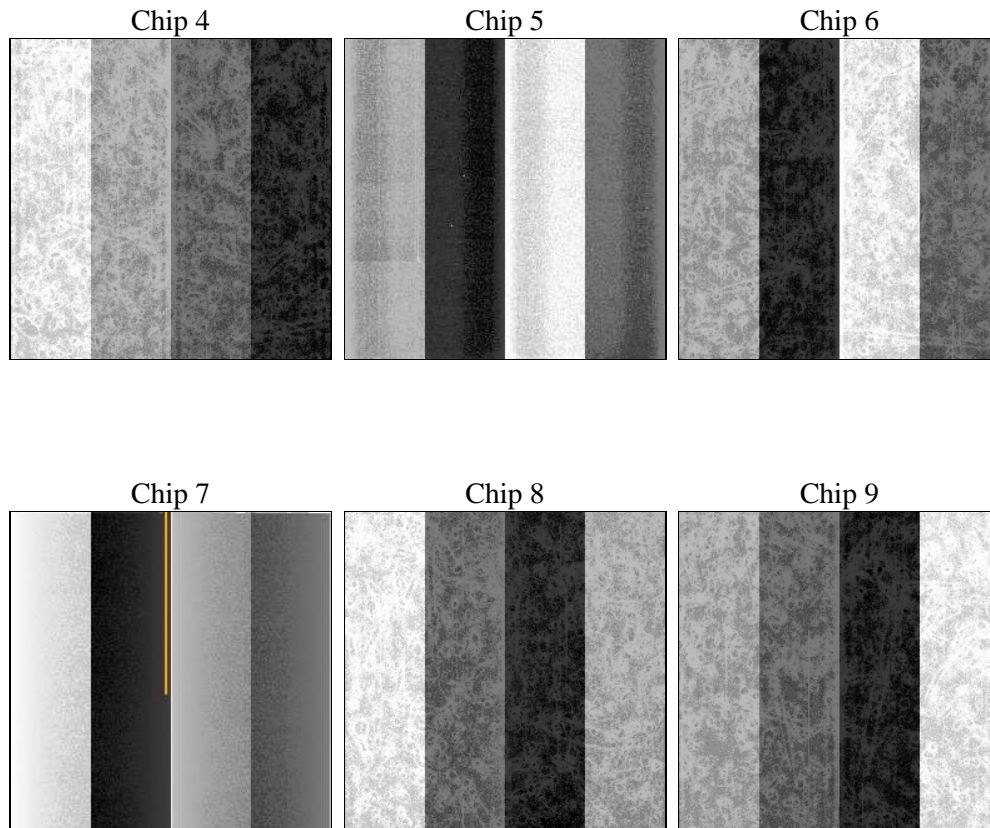
2 OBI

2.1 OBI

2.1.1 Images



2.1.2 Bias



2.1.3 Parameters

obi_num	0	Obi number	sched_exp_time	0.0	Scheduled observation exposure time
ascdsver	8.1.1	ASCDS version number	ontime	4039.1375608817	Sum of GTIs [s]
caldsver	4.1.4	 	ontime4	1489.4404223859	Sum of GTIs [s]
date	2009-11-21T14:15:22	Date and time of file creation	ontime5	4295.1764594465	Sum of GTIs [s]
revision	3	Processing version of data	ontime6	1682.910354048	Sum of GTIs [s]
			ontime7	4039.1375608817	Sum of GTIs [s]
			ontime8	1726.0773529187	Sum of GTIs [s]
			ontime9	1624.5715441406	Sum of GTIs [s]
			l1events	1519861	Number of level 1 events

2.1.4 Events

	ccd 4	ccd 5	ccd 6	ccd 7	ccd 8	ccd 9		ccd 4	ccd 5	ccd 6	ccd 7	ccd 8	ccd 9
level 1 events	149103	416895	178277	423762	185183	166641	grade 0 events	29041	37749	42406	68689	56156	43815
rejected events	24965	69530	25872	41996	25803	24369		19%	9%	23%	16%	30%	26%
rejected %	16%	16%	14%	9%	13%	14%	grade 1 events	122	212	174	147	217	194
								0%	0%	0%	0%	0%	0%
							grade 2 events	66361	134443	71498	106794	62825	62738
								44%	32%	40%	25%	33%	37%
							grade 3 events	2919	18293	4263	33138	6003	4573
								1%	4%	2%	7%	3%	2%
							grade 4 events	2845	15256	4370	29532	6088	4614
								1%	3%	2%	6%	3%	2%
							grade 5 events	1298	7169	1367	6135	1658	1489
								0%	1%	0%	1%	0%	0%
							grade 6 events	22972	141624	29868	143613	28308	26532
								15%	33%	16%	33%	15%	15%
							grade 7 events	23545	62149	24331	35714	23928	22686
								15%	14%	13%	8%	12%	13%

2.2 Compared Parameters

Parameter	Planned	Actual	Parameter	Planned	Actual
Instrument	ACIS	ACIS	Obspar format version number	6	6
Detector	ACIS-456789	ACIS-456789	Obspar file type	PREDICTED	ACTUAL
Grating	NONE	NONE	Obspar update status	NONE	UPDATED
Data mode	FAINT	FAINT	On-chip summing requested	N	N
Observation mode	SECONDARY	SECONDARY	Subarray requested	NONE	NONE
Pointing RA	0	153.3901787935159	Alternating exposures requested	N	N
Pointing Dec	0	49.40775432224129	Primary exposure time	0.000000	3.2
Pointing Roll	0.0	64.32855208646052			
SIM focus pos (mm)	-0.684267	-1.428180813131781			
SIM defocus (mm)	0	0.1051558262725154			
SIM translation stage pos (mm)	-190.132523	250.466033080201			
SIM translation stage offset (mm)	0	-0.01005468664627074			
Observation start time	58521221.964	58521221.195752			
Observation start date	1999-11-09T07:53:42	1999-11-09T07:53:41			
Observation end time	58531023.015	58531022.246106			
Observation end date	1999-11-09T10:37:03	1999-11-09T10:37:02			
Read mode	TIMED	TIMED			

2.3 Star Slots

2.4 FID Slots

A Summary

A.1 Status

V&V Scientist	Beth Sundheim
V&V Date (YYYY-MM-DD)	2010.08.12
V&V Edition	1
V&V Disposition and Status	OK
V&V Charge Time	4.0391375608817

A.2 Comments

This observation was acquired with the focal plane temperature raised from -120C to -110C, for attempted recalibration of ACIS for the 1999-09-16 through 2000-01-28 period. This reprocessing of the data applies no CTI correction because none is available for that temperature.