

# V&V Reference Report

## L2 ASCDS Version : 8.1.1

Observation 62278 - L2 Version 4  
Chandra X-Ray Center

L2 Processing Date : Nov 25 2009

## Contents

<b>1</b>	<b>Front</b>	<b>2</b>
<b>2</b>	<b>OBI</b>	<b>3</b>
2.1	OBI . . . . .	3
2.1.1	Images . . . . .	3
2.1.2	Bias . . . . .	3
2.1.3	Parameters . . . . .	4
2.1.4	Events . . . . .	4
2.2	Compared Parameters . . . . .	5
2.3	Star Slots . . . . .	6
2.4	FID Slots . . . . .	6
<b>A</b>	<b>Summary</b>	<b>7</b>
A.1	Status . . . . .	7
A.2	Comments . . . . .	7

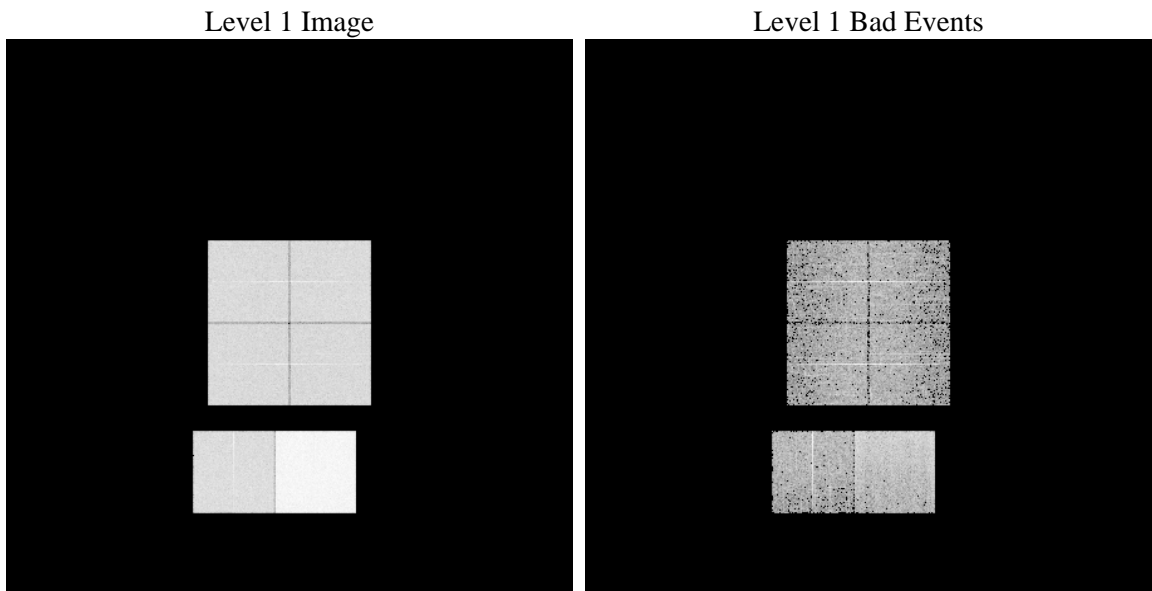
# 1 Front

seq_num	&#160	Sequence number
obs_id	62278	Observation id
title	ACIS-012367 diagnostics	Proposal title
observer	CHANDRA engineering request/realtime commanding	Principal investig
object	&#160	Source name
dtcycle	0	&#160
cycle	P	events from which exps? Prim/Second/Both
ra_targ	0.0	Observer's specified target RA
dec_targ	0.0	Observer's specified target Dec
ra_nom	0.031373034016871	Nominal RA
dec_nom	59.975715759631	Nominal Dec
roll_nom	270.88090641386	Nominal Roll
revision	4	Processing version of data
ontime	3504.0017248914	Sum of GTIs [s]
livetime	3459.6319451943	Livetime [s]
ontime0	1377.3860240579	Sum of GTIs [s]
ontime1	1390.3913736716	Sum of GTIs [s]
ontime2	1325.5841158703	Sum of GTIs [s]
ontime3	1309.2423333004	Sum of GTIs [s]
ontime6	1474.6717467234	Sum of GTIs [s]
ontime7	3504.0017248914	Sum of GTIs [s]
l2events	915884	Number of level 2 events

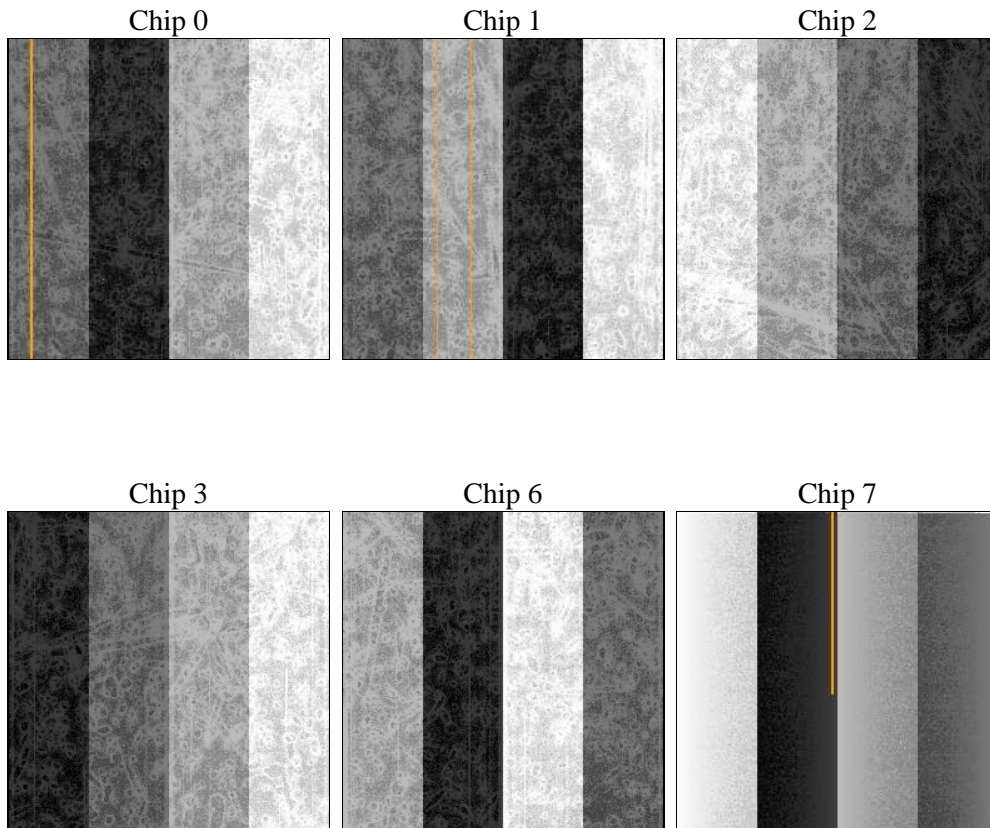
## 2 OBI

### 2.1 OBI

#### 2.1.1 Images



#### 2.1.2 Bias



### 2.1.3 Parameters

obi_num	0	Obi number		
ascdsver	8.1.1	ASCDS version number	sched_exp_time	0.0
caldsver	4.1.4	&#160		Scheduled observation exposure time
date	2009-11-25T14:40:18	Date and time of file creation	ontime	3504.0017248914
revision	3	Processing version of data	ontime0	1377.3860240579
			ontime1	1390.3913736716
			ontime2	1325.5841158703
			ontime3	1309.2423333004
			ontime6	1474.6717467234
			ontime7	3504.0017248914
			l1events	1059592
				Sum of GTIs [s]
				Sum of GTIs [s]
				Sum of GTIs [s]
				Sum of GTIs [s]
				Sum of GTIs [s]
				Sum of GTIs [s]
				Sum of GTIs [s]
				Number of level 1 events

### 2.1.4 Events

	ccd 0	ccd 1	ccd 2	ccd 3	ccd 6	ccd 7		ccd 0	ccd 1	ccd 2	ccd 3	ccd 6	ccd 7
level 1 events	137127	139297	134607	133272	153380	361909	grade 0 events	43873	44184	36904	38205	36827	59222
rejected events	18215	18447	19801	19216	22481	35936		31%	31%	27%	28%	24%	16%
rejected %	13%	13%	14%	14%	14%	9%	grade 1 events	175	195	145	166	169	138
								0%	0%	0%	0%	0%	0%
							grade 2 events	44728	45801	49878	48146	61077	92200
								32%	32%	37%	36%	39%	25%
							grade 3 events	4763	4755	3838	3971	3760	28214
								3%	3%	2%	2%	2%	7%
							grade 4 events	4662	4647	4000	3987	3758	25232
								3%	3%	2%	2%	2%	6%
							grade 5 events	1183	1235	1165	1140	1216	5082
								0%	0%	0%	0%	0%	1%
							grade 6 events	20886	21463	20455	20023	25747	122051
								15%	15%	15%	15%	16%	33%
							grade 7 events	16857	17017	18222	17634	20826	29770
								12%	12%	13%	13%	13%	8%

## 2.2 Compared Parameters

Parameter	Planned	Actual	Parameter	Planned	Actual
Instrument	ACIS	ACIS	Obspar format version number	6	6
Detector	ACIS-012367	ACIS-012367	Obspar file type	PREDICTED	ACTUAL
Grating	NONE	NONE	Obspar update status	NONE	UPDATED
Data mode	FAINT	FAINT	On-chip summing requested	N	N
Observation mode	SECONDARY	SECONDARY	Subarray requested	NONE	NONE
Pointing RA	0	0.03137303401687054	Alternating exposures requested	N	N
Pointing Dec	0	59.97571575963071	Primary exposure time	3.2	3.2
Pointing Roll	0.0	270.880906413858			
SIM focus pos (mm)	-0.782348	-0.6828225247311905			
SIM defocus (mm)	0	0.8505141146731063			
SIM translation stage pos (mm)	-233.592463	250.466033080201			
SIM translation stage offset (mm)	0	-0.01005468664627074			
Observation start time	61208849.961728	61208849.192904			
Observation start date	1999-12-10T10:27:30	1999-12-10T10:27:29			
Observation end time	61216756.812017	61216756.043191			
Observation end date	1999-12-10T12:39:17	1999-12-10T12:39:16			
Read mode	TIMED	TIMED			

## 2.3 Star Slots

## 2.4 FID Slots

# A Summary

## A.1 Status

V&V Scientist	Jen Lauer
V&V Date (YYYY-MM-DD)	2010.01.25
V&V Edition	1
V&V Disposition and Status	OK
V&V Charge Time	3.5040017248914

## A.2 Comments

The focal plane temperature is approximately -110C during this observation. This reprocessing of the data applies no CTI correction because none is available for this temperature at present.

The ACIS CTI correction has not been calibrated at this temperature, because it was early in the mission, and ACIS had not yet been lowered to the standard -119.7 C. Both front and back illuminated chips are affected. However a T\_GAIN correction has been applied to the BI chips (ACIS-5 and ACIS-7) data included here.

The ACIS spectral response calibration is less accurate at these warmer temperatures than it is at -119.7 C. Users whose science objectives depend on the most accurate spectral response (ie: fitting line-rich spectra) may notice an effect. Users whose science objectives do not depend on the most accurate spectral response should not notice an effect.