

# V&V Reference Report

## L2 ASCDS Version : 8.1.1

Observation 62262 - L2 Version 4  
Chandra X-Ray Center

L2 Processing Date : Nov 26 2009

## Contents

<b>1</b>	<b>Front</b>	<b>2</b>
<b>2</b>	<b>OBI</b>	<b>3</b>
2.1	OBI . . . . .	3
2.1.1	Images . . . . .	3
2.1.2	Bias . . . . .	3
2.1.3	Parameters . . . . .	4
2.1.4	Events . . . . .	4
2.2	Compared Parameters . . . . .	5
2.3	Star Slots . . . . .	6
2.4	FID Slots . . . . .	6
<b>A</b>	<b>Summary</b>	<b>7</b>
A.1	Status . . . . .	7
A.2	Comments . . . . .	7

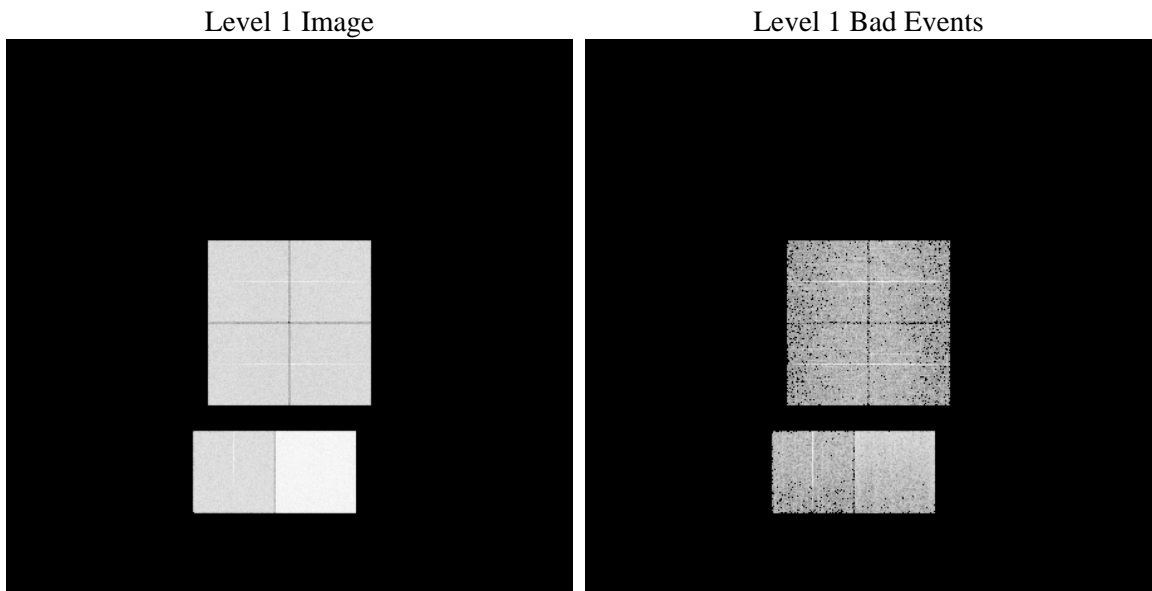
# 1 Front

seq_num	&#160	Sequence number
obs_id	62262	Observation id
title	ACIS-012367 diagnostics	Proposal title
observer	CHANDRA engineering request/realtime commanding	Principal investig
object	&#160	Source name
dtcycle	0	&#160
cycle	P	events from which exps? Prim/Second/Both
ra_targ	0.0	Observer's specified target RA
dec_targ	0.0	Observer's specified target Dec
ra_nom	354.42902206083	Nominal RA
dec_nom	52.960587877669	Nominal Dec
roll_nom	285.54078890044	Nominal Roll
revision	4	Processing version of data
ontime	3526.5247067958	Sum of GTIs [s]
livetime	3481.8697275401	Livetime [s]
ontime0	1377.7352305576	Sum of GTIs [s]
ontime1	1416.627650775	Sum of GTIs [s]
ontime2	1351.8068506494	Sum of GTIs [s]
ontime3	1346.9344118088	Sum of GTIs [s]
ontime6	1496.2272925302	Sum of GTIs [s]
ontime7	3526.5247067958	Sum of GTIs [s]
l2events	917809	Number of level 2 events

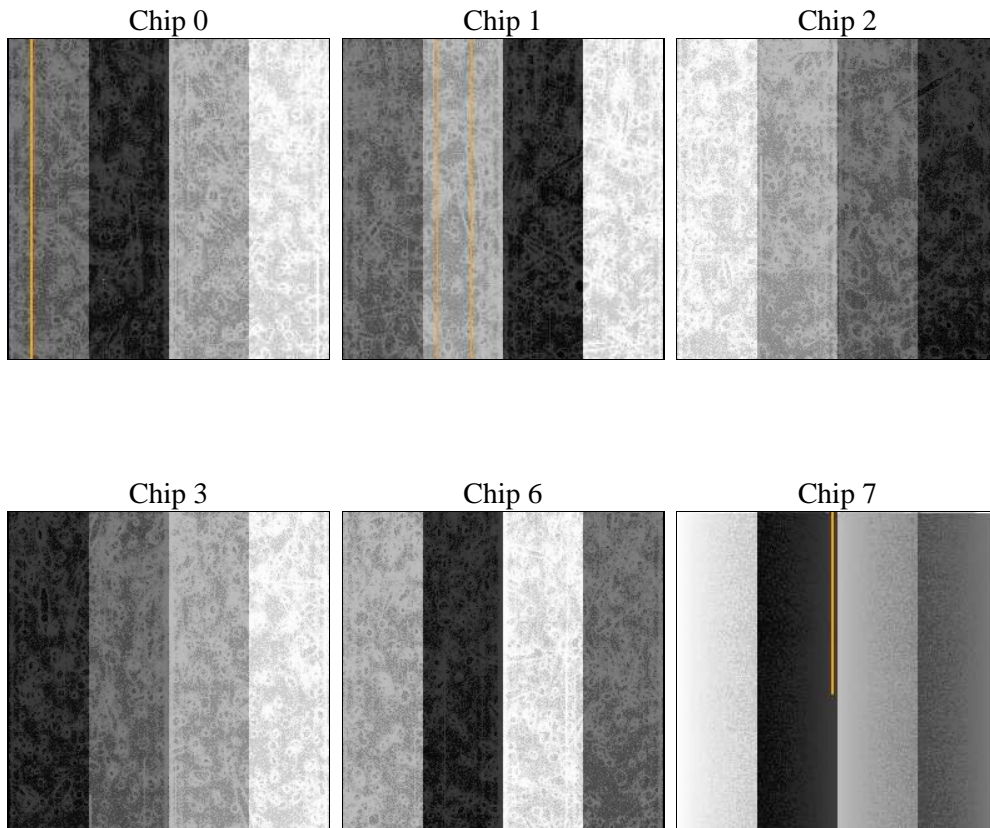
## 2 OBI

### 2.1 OBI

#### 2.1.1 Images



#### 2.1.2 Bias



### 2.1.3 Parameters

obi_num	0	Obi number		
ascdsver	8.1.1	ASCDS version number	sched_exp_time	0.0
caldsver	4.1.4	&#160		Scheduled observation exposure time
date	2009-11-26T09:48:28	Date and time of file creation	ontime	3526.5247067958
revision	3	Processing version of data	ontime0	1377.7352305576
			ontime1	1416.627650775
			ontime2	1351.8068506494
			ontime3	1346.9344118088
			ontime6	1496.2272925302
			ontime7	3526.5247067958
			l1events	1059983
				Sum of GTIs [s]
				Sum of GTIs [s]
				Sum of GTIs [s]
				Sum of GTIs [s]
				Sum of GTIs [s]
				Sum of GTIs [s]
				Sum of GTIs [s]
				Number of level 1 events

### 2.1.4 Events

	ccd 0	ccd 1	ccd 2	ccd 3	ccd 6	ccd 7		ccd 0	ccd 1	ccd 2	ccd 3	ccd 6	ccd 7
level 1 events	136330	141315	135035	135021	153362	358920	grade 0 events	43948	45133	36618	37445	36328	58678
rejected events	18465	19083	18775	19345	21504	35483		32%	31%	27%	27%	23%	16%
rejected %	13%	13%	13%	14%	14%	9%	grade 1 events	201	177	159	175	127	137
								0%	0%	0%	0%	0%	0%
							grade 2 events	44212	46265	51462	49945	62085	90788
								32%	32%	38%	36%	40%	25%
							grade 3 events	4651	4817	3807	3985	3819	27979
								3%	3%	2%	2%	2%	7%
							grade 4 events	4612	4851	3796	3870	3752	25097
								3%	3%	2%	2%	2%	6%
							grade 5 events	1215	1203	1136	1150	1188	5099
								0%	0%	0%	0%	0%	1%
							grade 6 events	20713	21421	20872	20431	25874	121193
								15%	15%	15%	15%	16%	33%
							grade 7 events	16778	17448	17185	18020	20189	29949
								12%	12%	12%	13%	13%	8%

## 2.2 Compared Parameters

Parameter	Planned	Actual	Parameter	Planned	Actual
Instrument	ACIS	ACIS	Obspar format version number	6	6
Detector	ACIS-012367	ACIS-012367	Obspar file type	PREDICTED	ACTUAL
Grating	NONE	NONE	Obspar update status	NONE	UPDATED
Data mode	FAINT	FAINT	On-chip summing requested	N	N
Observation mode	SECONDARY	SECONDARY	Subarray requested	NONE	NONE
Pointing RA	0	354.4290220608332	Alternating exposures requested	N	N
Pointing Dec	0	52.96058787766873	Primary exposure time	3.2	3.2
Pointing Roll	0.0	285.5407889004397			
SIM focus pos (mm)	-0.782348	-0.6828225247311905			
SIM defocus (mm)	0	0.8505141146731063			
SIM translation stage pos (mm)	-233.592463	250.466033080201			
SIM translation stage offset (mm)	0	-0.01005468664627074			
Observation start time	61955220.138387	61955219.369925			
Observation start date	1999-12-19T01:47:00	1999-12-19T01:46:59			
Observation end time	61962518.138651	61962517.37019			
Observation end date	1999-12-19T03:48:38	1999-12-19T03:48:37			
Read mode	TIMED	TIMED			

## 2.3 Star Slots

## 2.4 FID Slots

# A Summary

## A.1 Status

V&V Scientist	Jen Lauer
V&V Date (YYYY-MM-DD)	2010.01.25
V&V Edition	1
V&V Disposition and Status	OK
V&V Charge Time	3.5265247067958

## A.2 Comments

The focal plane temperature is approximately -110C during this observation. This reprocessing of the data applies no CTI correction because none is available for this temperature at present.

The ACIS CTI correction has not been calibrated at this temperature, because it was early in the mission, and ACIS had not yet been lowered to the standard -119.7 C. Both front and back illuminated chips are affected. However a T\_GAIN correction has been applied to the BI chips (ACIS-5 and ACIS-7) data included here.

The ACIS spectral response calibration is less accurate at these warmer temperatures than it is at -119.7 C. Users whose science objectives depend on the most accurate spectral response (ie: fitting line-rich spectra) may notice an effect. Users whose science objectives do not depend on the most accurate spectral response should not notice an effect.