

V&V Reference Report

L2 ASCDS Version : 10.6.4.1

Observation 21911 - L2 Version 1
Chandra X-Ray Center

L2 Processing Date : Oct 24 2018

Contents

1	Front	2
2	OBI	3
2.1	OBI	3
2.1.1	Images	3
2.1.2	Parameters	4
2.1.3	Events	4
2.2	Compared Parameters	5
2.3	Aspect	6
2.4	Star Slots	9
2.4.1	Slot 3	9
2.4.2	Slot 4	10
2.4.3	Slot 6	11
2.4.4	Slot 7	12
2.5	FID Slots	13
2.5.1	Slot 0	13
2.5.2	Slot 1	14
2.5.3	Slot 2	15
A	Summary	16
A.1	Status	16
A.2	Comments	16

1 Front

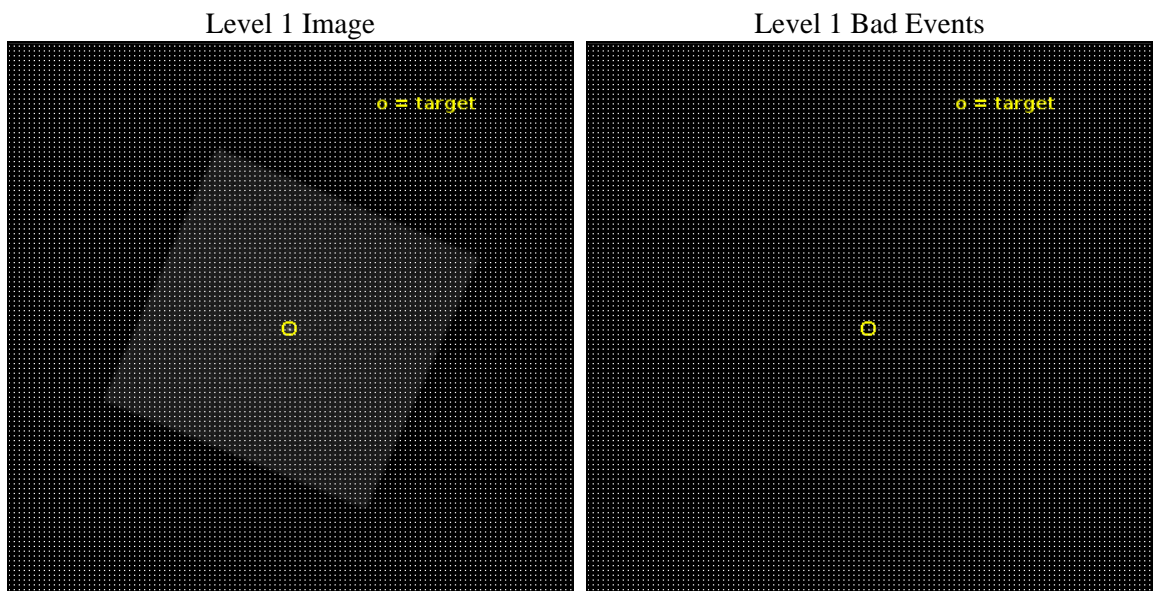
seq_num	291500	Sequence number
obs_id	21911	Observation id
title	Measure and monitor HRMA performance during cool down	Proposal tit
observer	CXC Calibration	Principal investigator
object	HR1099	Source name
ra_targ	54.197083	Observer's specified target RA [deg]
dec_targ	0.586917	Observer's specified target Dec [deg]
ra_nom	54.19546063783	Nominal RA [deg]
dec_nom	0.59368150220553	Nominal Dec [deg]
roll_nom	68.404728332646	Nominal Roll [deg]
revision	1	Processing version of data
ontime	10161.081854463	[s]
livetime	9798.0528339693	Ontime multiplied by DTCOR
l2events	1334826	Number of level 2 events



2 OBI

2.1 OBI

2.1.1 Images



2.1.2 Parameters

obi_num	0	Obi number	sched_exp_time	10000.000000	[s] Scheduled observation exposure time
ascdsver	10.6.4.1	Processing system revision	ontime	10161.081854463	[s]
caldsver	4.8.0.1	 	l1events	1825922	Number of level 1 events
date	2018-10-25T00:30:40	Date and time of file creation			
revision	1	Processing version of data			

2.1.3 Events

Level 1 Events

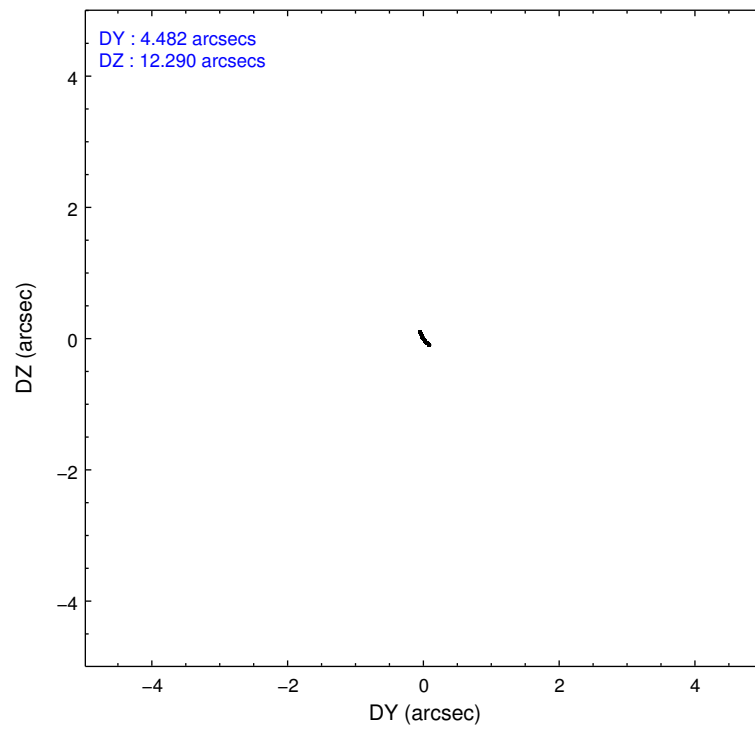
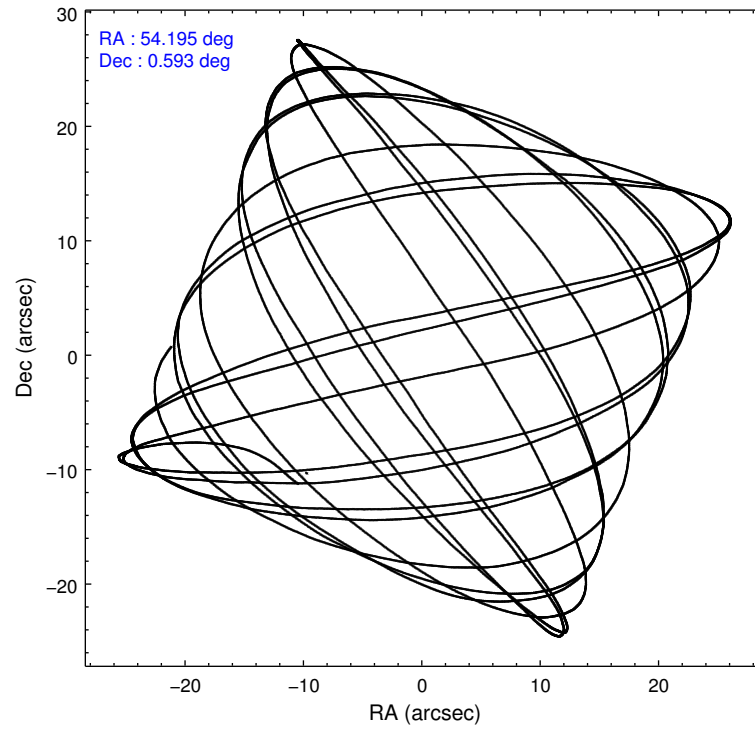
	segment 0
level 1 events	1825922
rejected events	105941
rejected %	5%

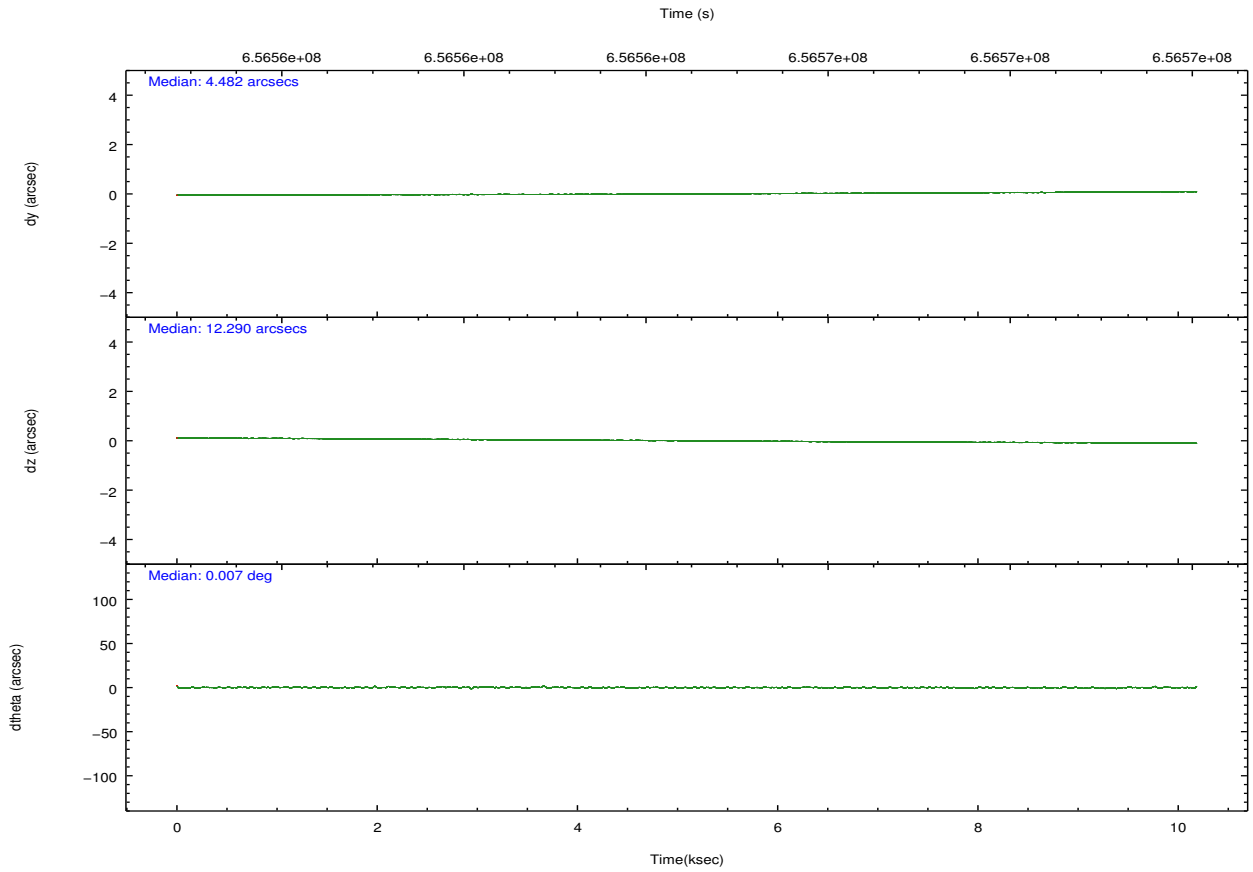
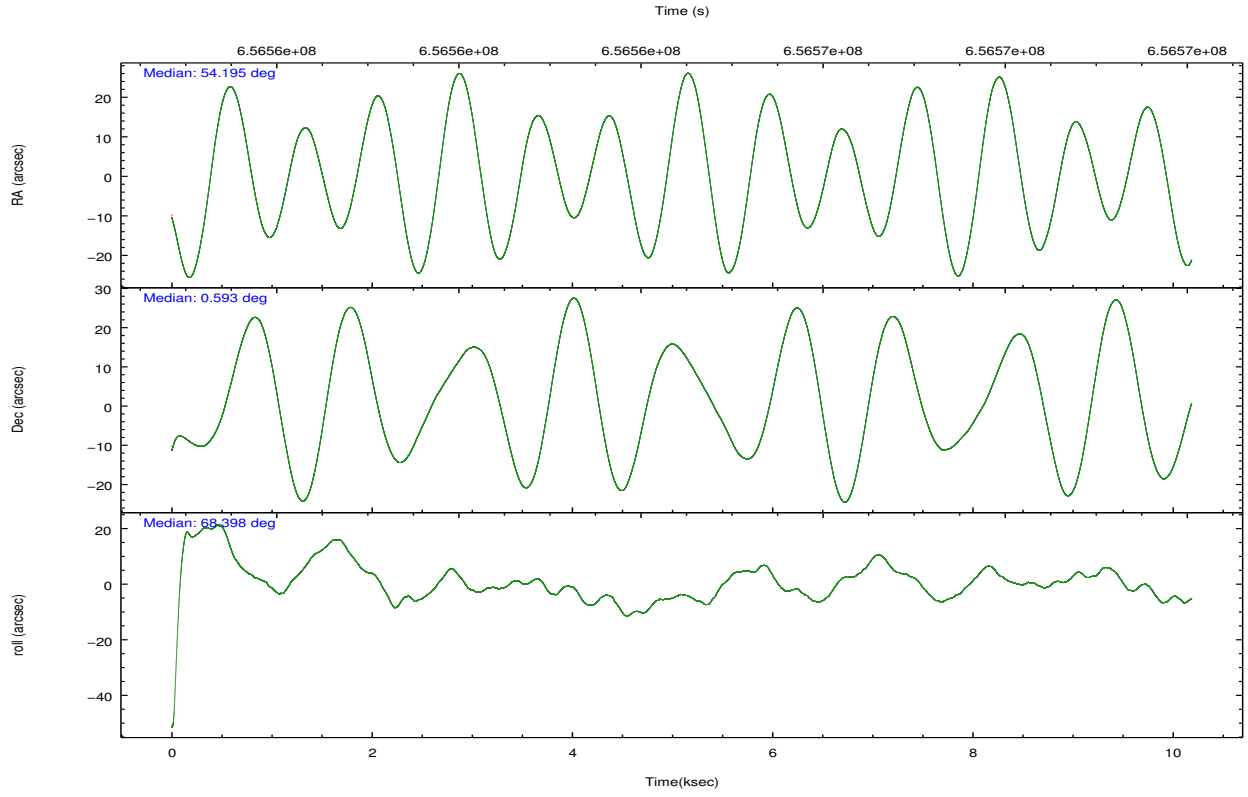
2.2 Compared Parameters

Parameter	Planned	Actual
Instrument	HRC	HRC
Detector	HRC-I	HRC-I
Grating	NONE	NONE
Data mode	OBSERVING	OBSERVING
Observation mode	POINTING	POINTING
[deg] Pointing RA	54.200212	54.1954606378298
[deg] Pointing Dec	0.566895	0.5936815022055293
[deg] Pointing Roll	68.500255	68.40472833264624
[mm] SIM focus pos	-1.040293	-1.038866356238299
[mm] SIM defocus	0	0.001426264420575141
[mm] SIM translation stage pos	126.985494	126.9854943052878
[mm] SIM translation stage offset	0	-5.413686238853188e-06
[s] Observation start time (MET)	656559559.184000	656558874.2345001
Observation start date	2018-10-22T01:38:10	2018-10-22T01:27:54
[s] Observation end time (MET)	656569559.184000	656569694.13515
Observation end date	2018-10-22T04:24:50	2018-10-22T04:28:14

Parameter	Planned	Actual
Obspar format version number	7	7
Obspar file type	PREDICTED	ACTUAL
Obspar update status	NONE	UPDATED

2.3 Aspect



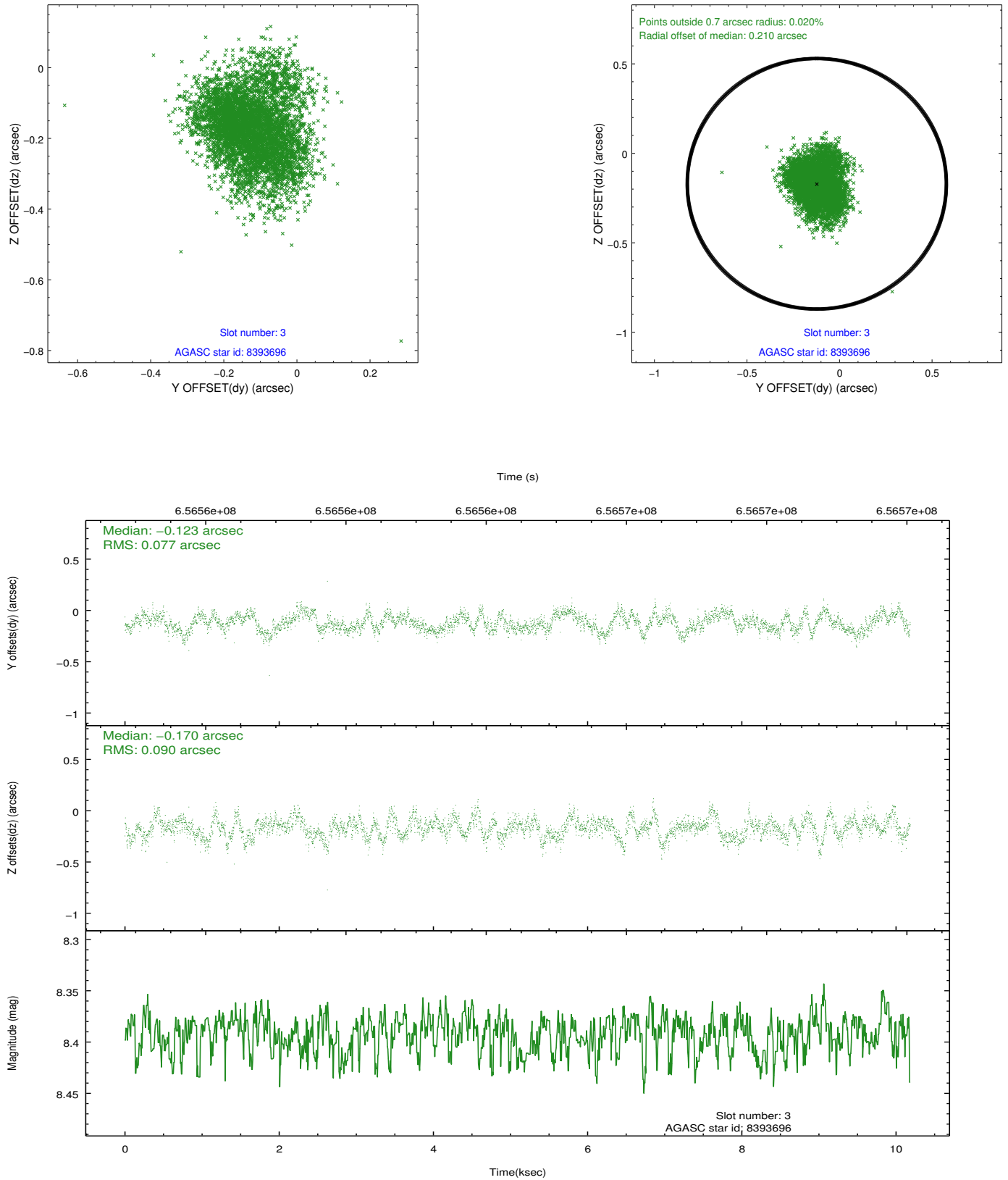


Slot Statistics

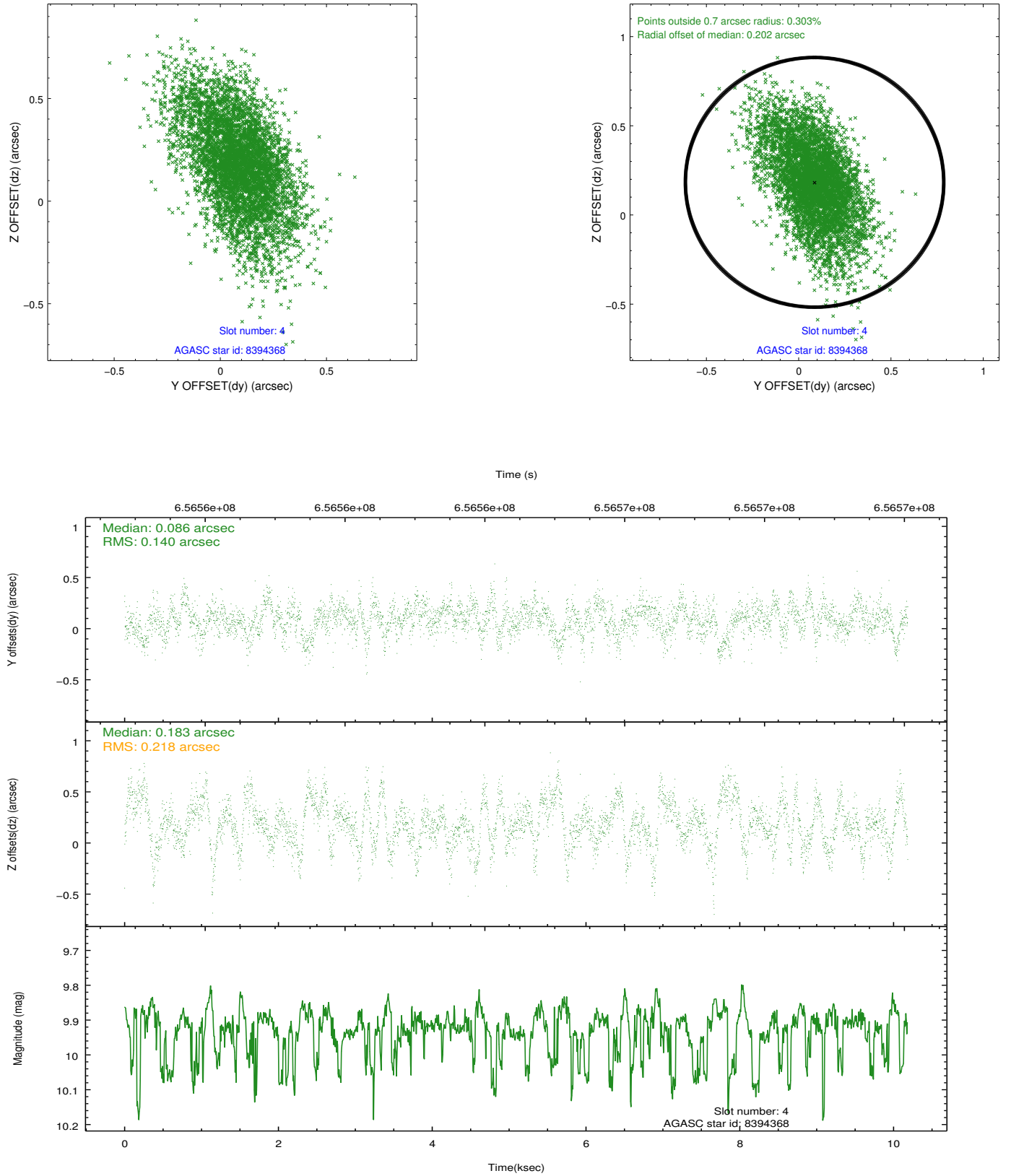
pt	status	used	id	mag	n_pts	frac_pts	med_dy	med_dz	dr1	dr2	ra	dec	mean_y	mea
0	FID		HRC-I-1	7.04	2485	1.000	-0.133	-0.025	0.007	0.011	0.000000	0.000000	-760.09	-1300
1	FID		HRC-I-2	7.06	2485	1.000	0.364	-0.203	0.006	0.010	0.000000	0.000000	852.73	-1302
2	FID		HRC-I-3	7.14	2485	1.000	-0.111	0.138	0.006	0.011	0.000000	0.000000	-1188.28	1003
3	GUIDE	used	8393696	8.39	4961	1.000	-0.123	-0.170	0.128	0.202	53.645666	0.680479	-350.90	2006
4	GUIDE	used	8394368	9.92	4954	1.000	0.086	0.183	0.268	0.472	53.566990	0.152579	-2222.95	1574
5	OMITTED			0.00	0	0.000	0.000	0.000	0.000	0.000	0.000000	0.000000	0.00	0
6	GUIDE	used	8395104	8.63	4967	1.000	0.110	0.229	0.124	0.211	54.744893	0.796520	1488.49	-1521
7	GUIDE	used	8398800	8.66	4963	1.000	-0.070	-0.239	0.125	0.201	54.242352	0.922024	1246.12	326

2.4 Star Slots

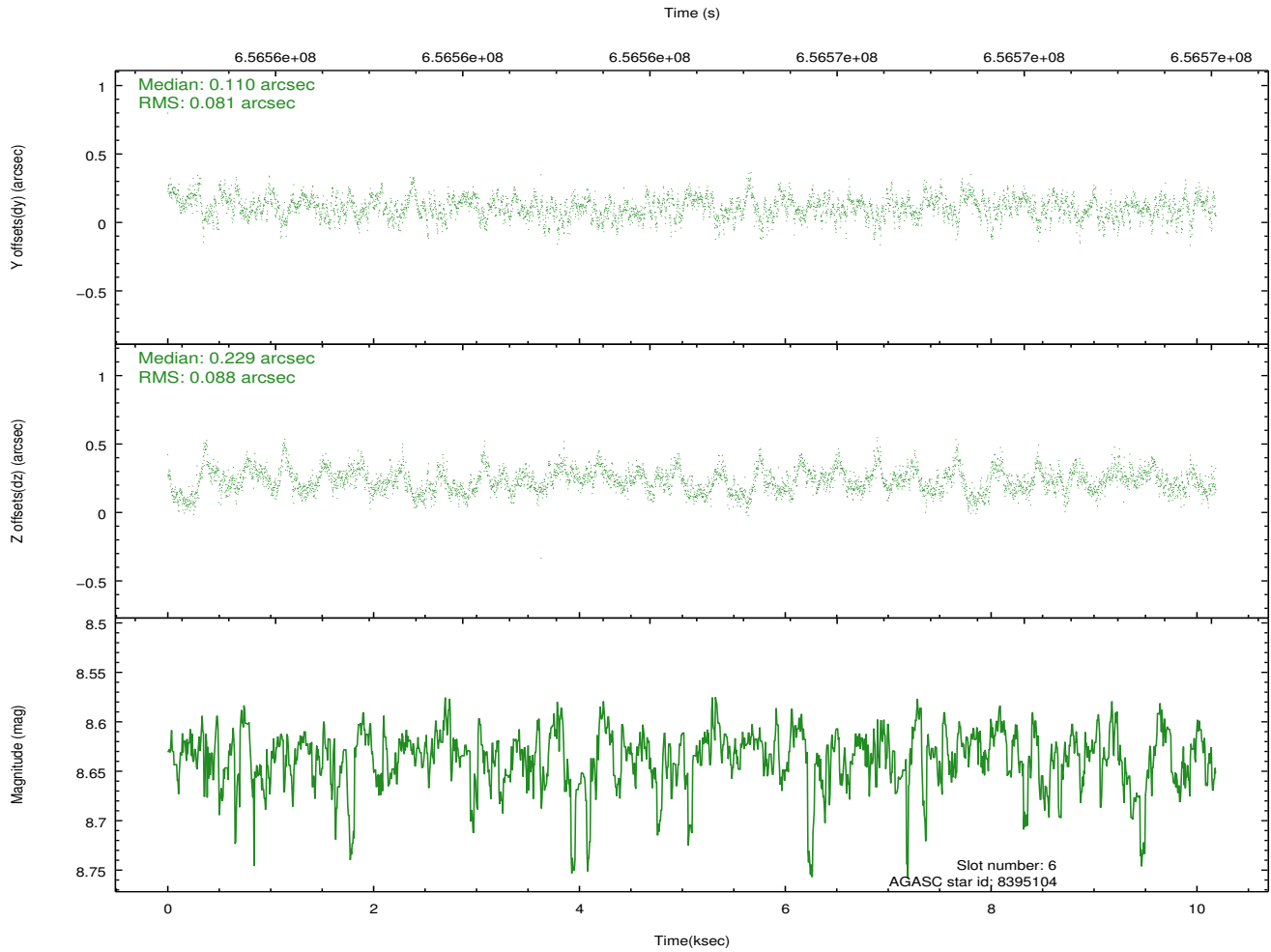
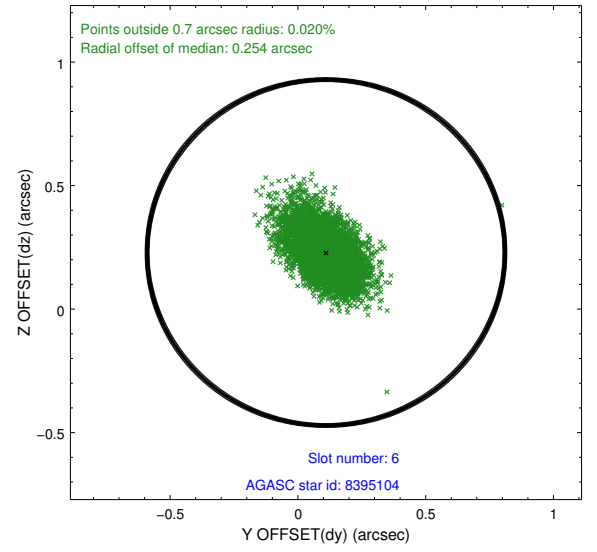
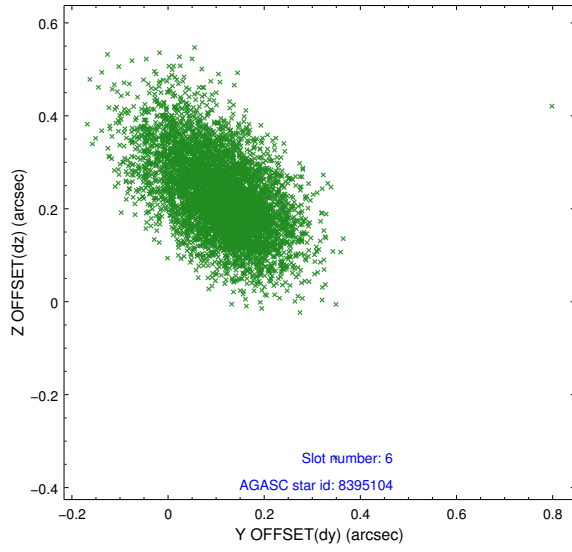
2.4.1 Slot 3



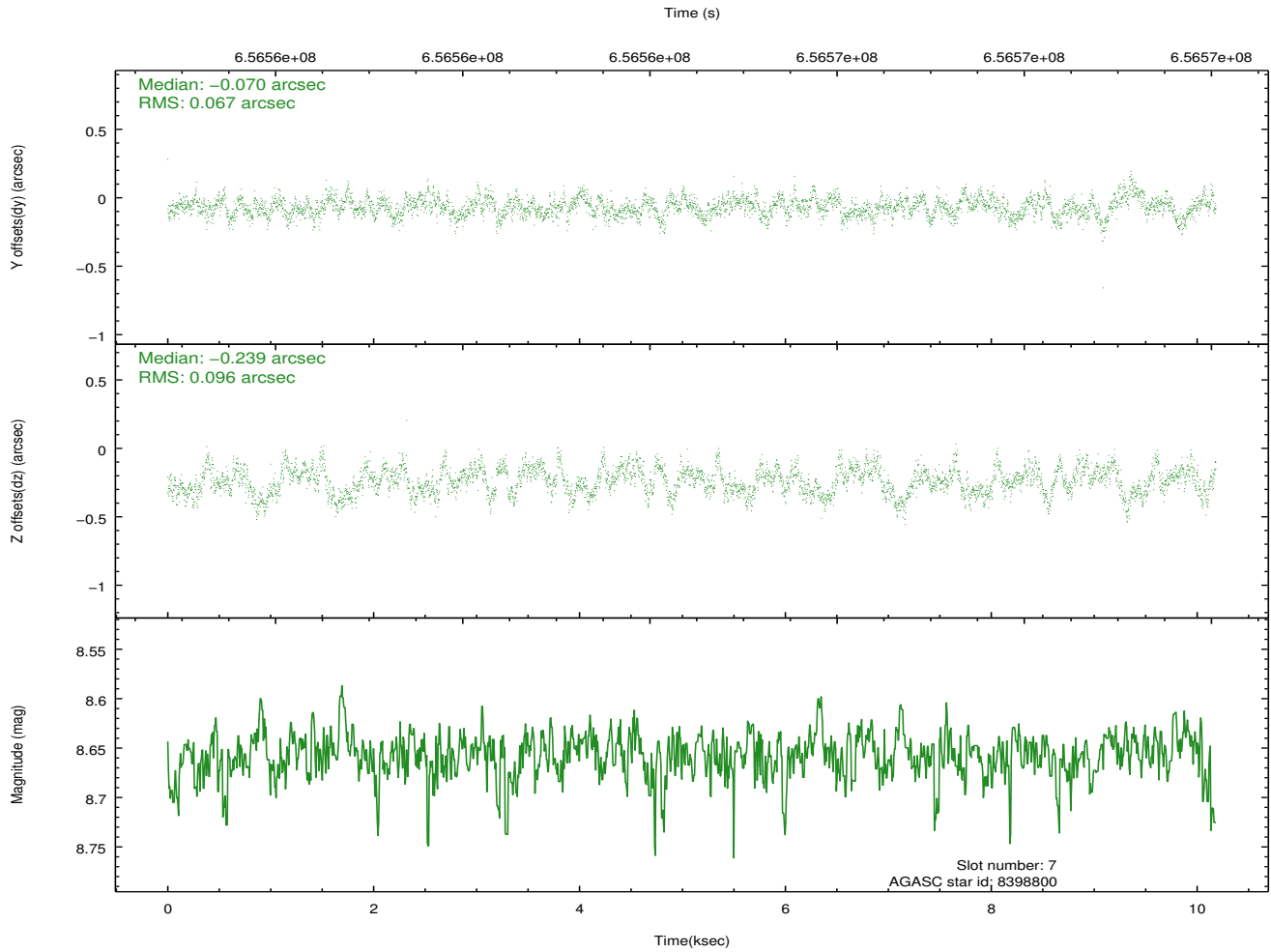
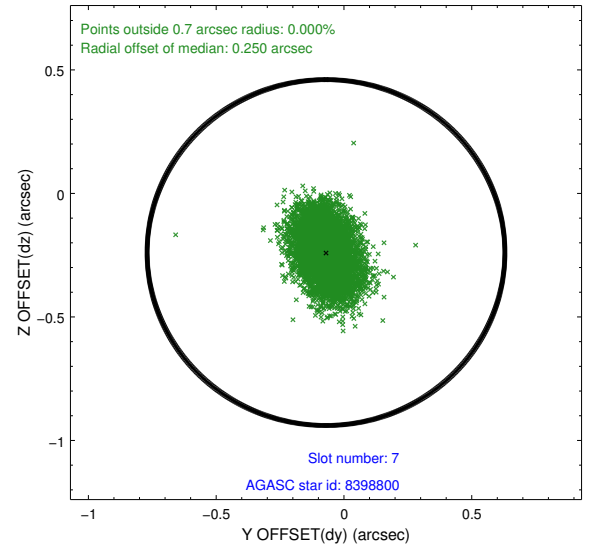
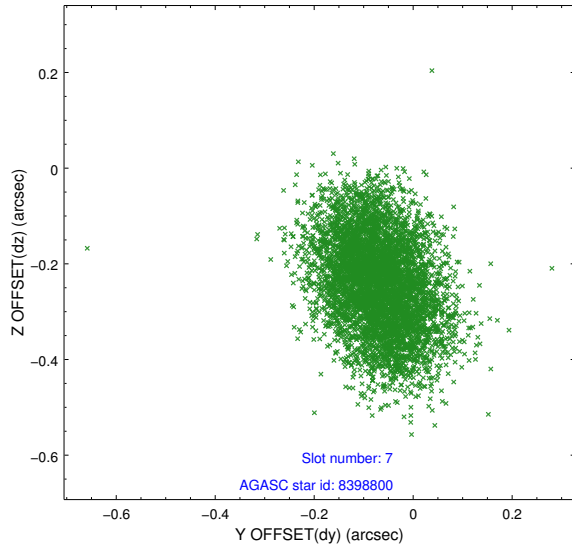
2.4.2 Slot 4



2.4.3 Slot 6

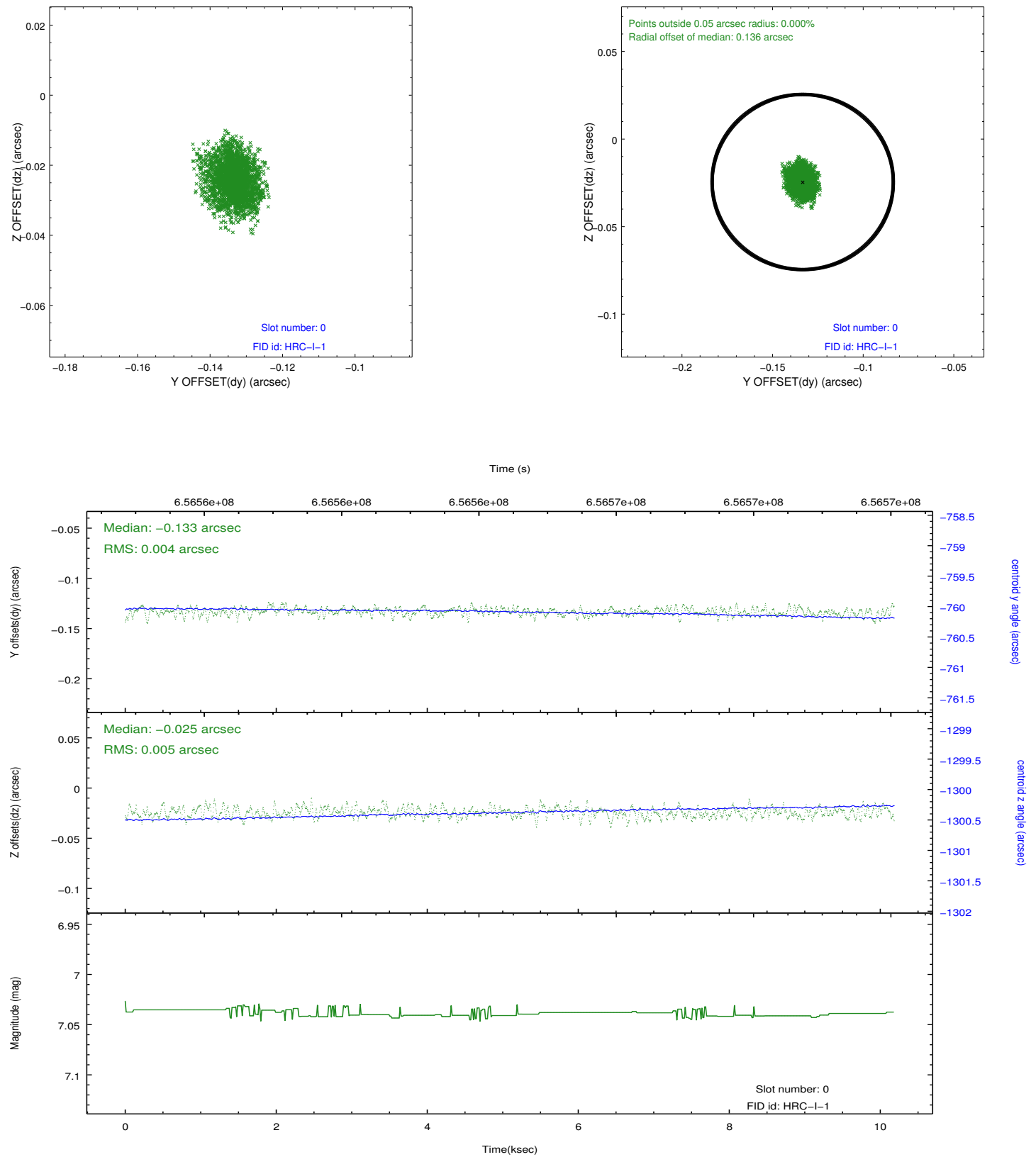


2.4.4 Slot 7

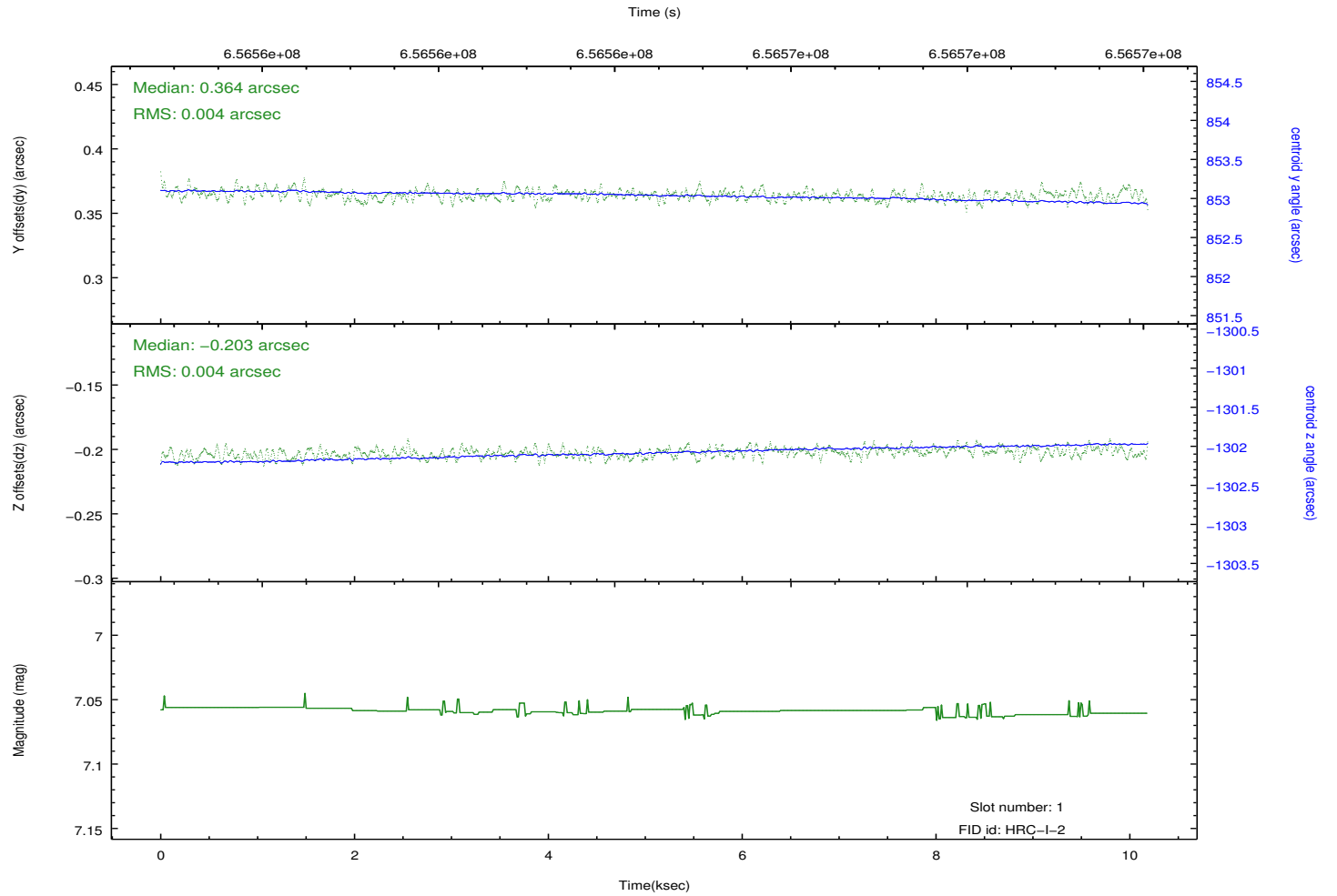
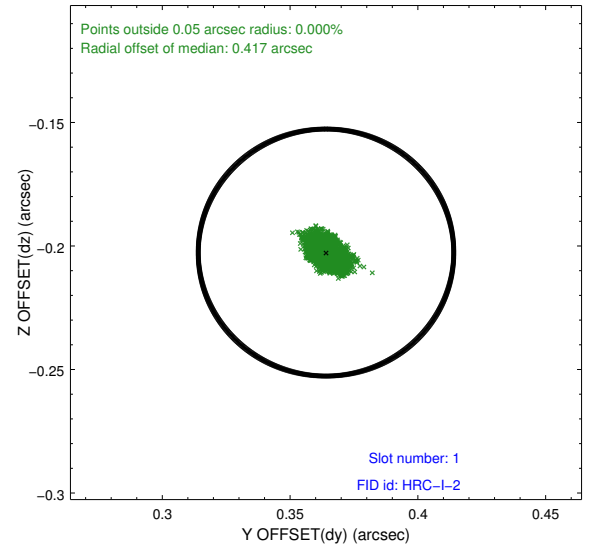
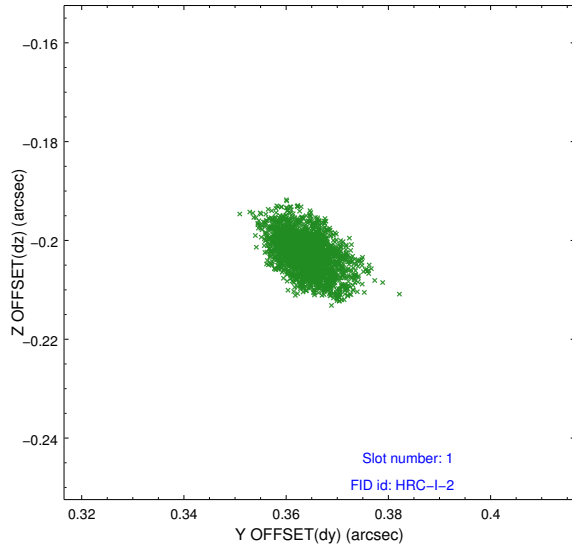


2.5 FID Slots

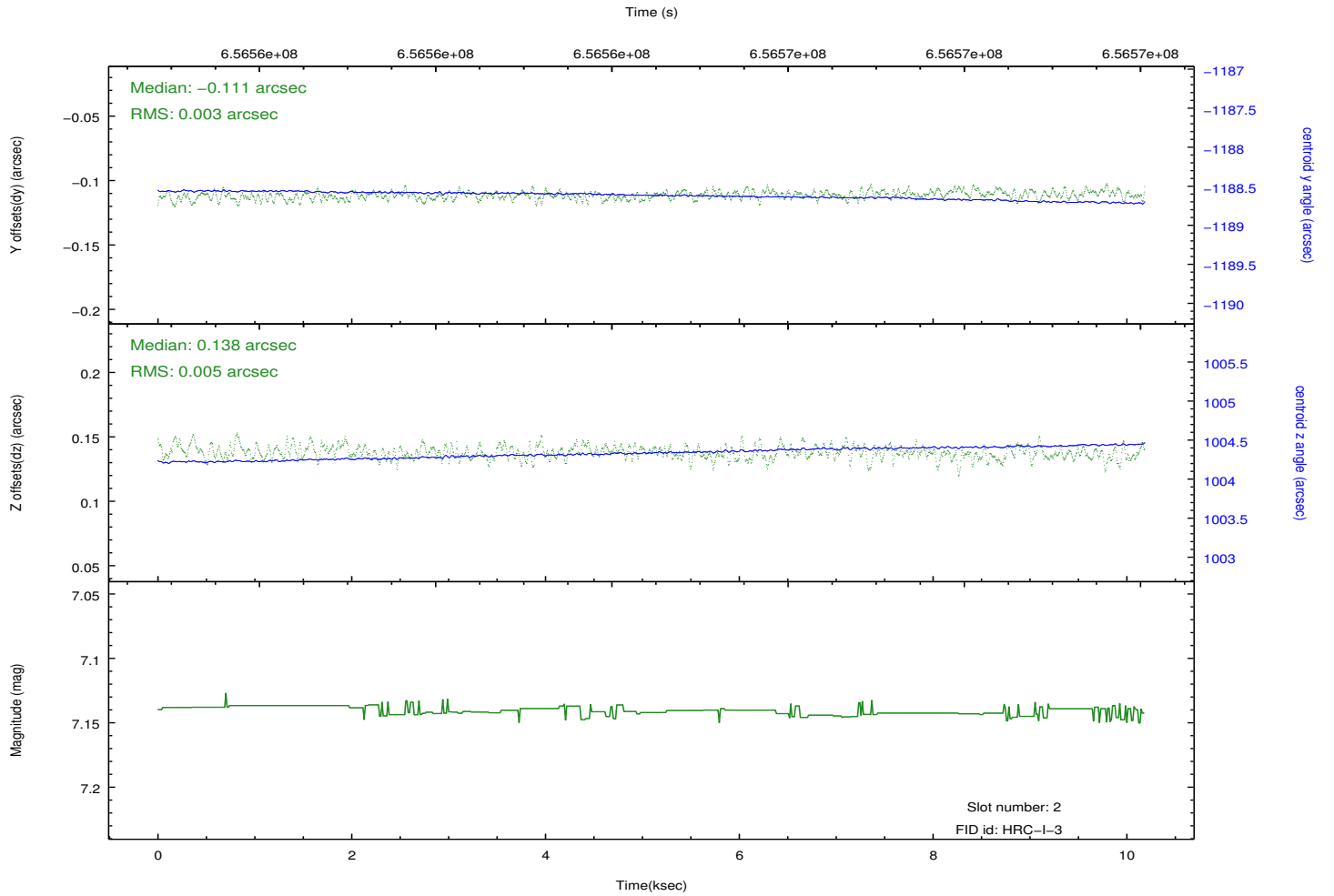
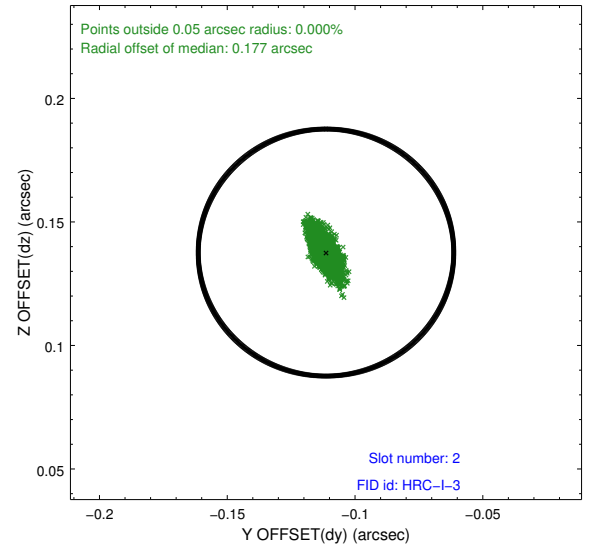
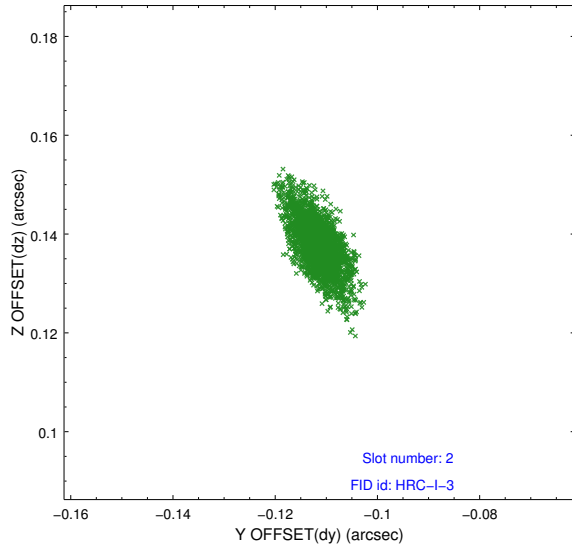
2.5.1 Slot 0



2.5.2 Slot 1



2.5.3 Slot 2



A Summary

A.1 Status

V&V Scientist	Jen Lauer
V&V Date (YYYY-MM-DD)	2018.10.25
V&V Edition	1
V&V Disposition and Status	OK
V&V Charge Time	10.161081854463

A.2 Comments

The guide star in slot 5 was removed from the aspect solution due to poor data quality. The aspect solution is improved by the removal of this guide star from the solution.

=====

Due to corruption of the secondary science data during this observation, some instrument parameters have bogus values. The data in this observation have been inspected by the HRC team. PLEASE NOTE: All the event data in this observation are good. The short gaps in the GTI intervals can be eliminated (i.e., use the first START and last STOP). THE DTF values during this observation can be estimated by dropping all the low values and averaging the remaining values near 1.0.