

V&V Reference Report

L2 ASCDS Version : 10.6

Observation 20707 - L2 Version 1
Chandra X-Ray Center

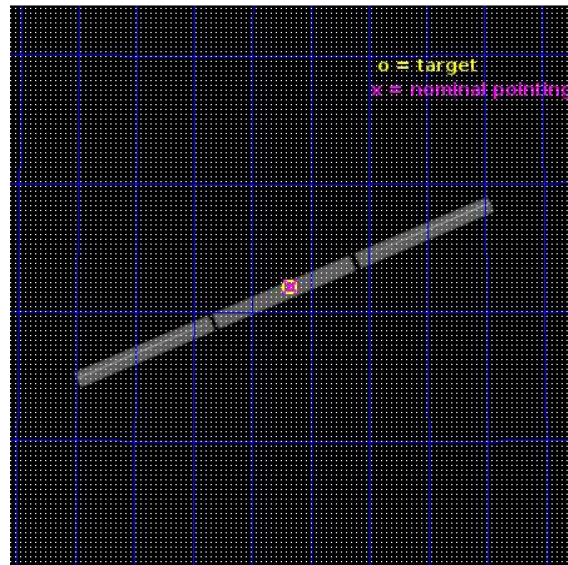
L2 Processing Date : Mar 27 2018

Contents

1	Front	2
2	OBI	3
2.1	OBI	3
2.1.1	Images	3
2.1.2	Parameters	4
2.1.3	Events	4
2.2	Compared Parameters	5
2.3	Aspect	6
2.4	Star Slots	9
2.4.1	Slot 3	9
2.4.2	Slot 4	10
2.4.3	Slot 5	11
2.4.4	Slot 6	12
2.4.5	Slot 7	13
2.5	FID Slots	14
2.5.1	Slot 0	14
2.5.2	Slot 1	15
2.5.3	Slot 2	16
3	Gratings	17
3.1	LETG Arm	17
A	Summary	19
A.1	Status	19
A.2	Comments	19

1 Front

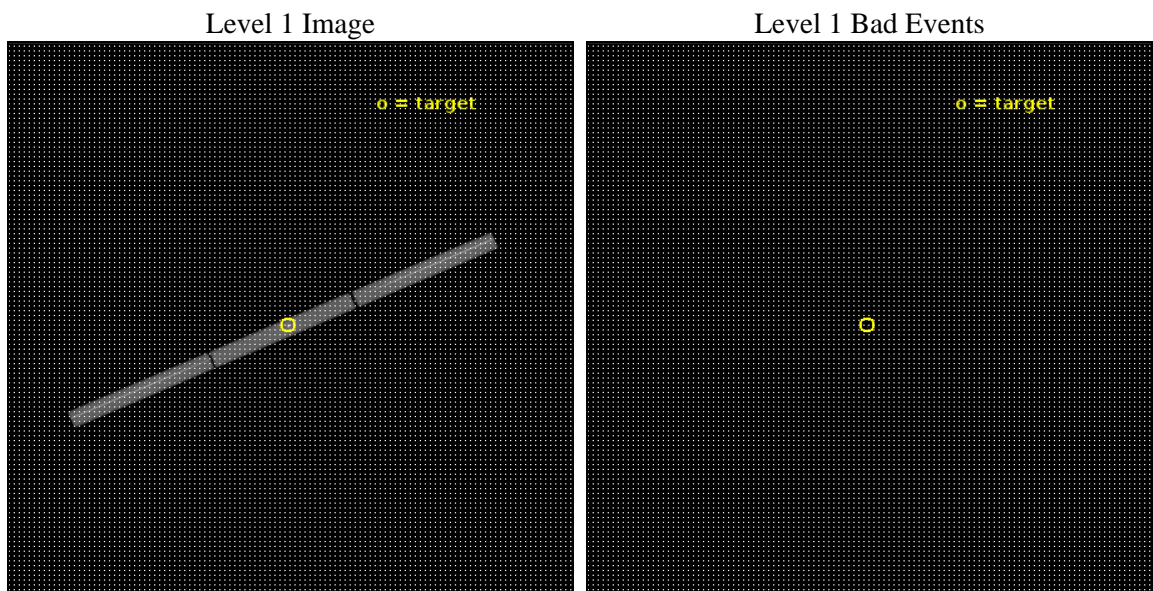
seq_num	291418	Sequence number
obs_id	20707	Observation id
title	AO-19 LETG/HRC-S Calibration Observations of HZ43	Proposal title
observer	CXC Calibration	Principal investigator
object	HZ43	Source name
ra_targ	199.090417	Observer's specified target RA [deg]
dec_targ	29.098306	Observer's specified target Dec [deg]
ra_nom	199.08192013606	Nominal RA [deg]
dec_nom	29.097684777012	Nominal Dec [deg]
roll_nom	156.07091572623	Nominal Roll [deg]
revision	1	Processing version of data
ontime	20177.126190424	[s]
livetime	19939.005053017	Ontime multiplied by DTCOR
l2events	2376566	Number of level 2 events



2 OBI

2.1 OBI

2.1.1 Images



2.1.2 Parameters

obi_num	0	Obi number	sched_exp_time	20000.000000	[s] Scheduled observation exposure time
ascdsver	10.6	Processing system revision	ontime	20177.126190424	[s]
caldsver	4.7.8	 	l1events	2829308	Number of level 1 events
date	2018-03-27T13:52:36	Date and time of file creation	tgmethod	TGDETECT	Method used to create src1a file
revision	1	Processing version of data	zo_pos	(32570.57, 32785.40)	src1a sky pixel position

2.1.3 Events

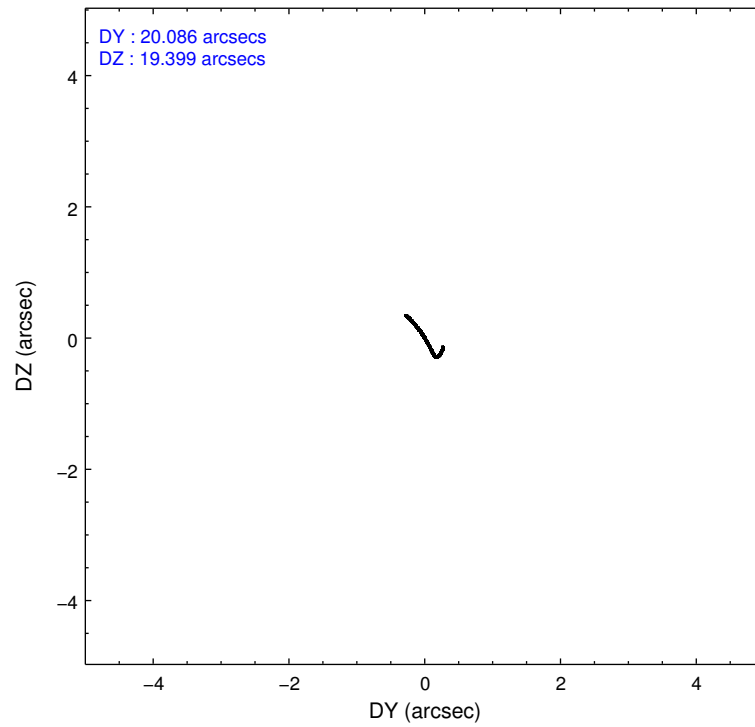
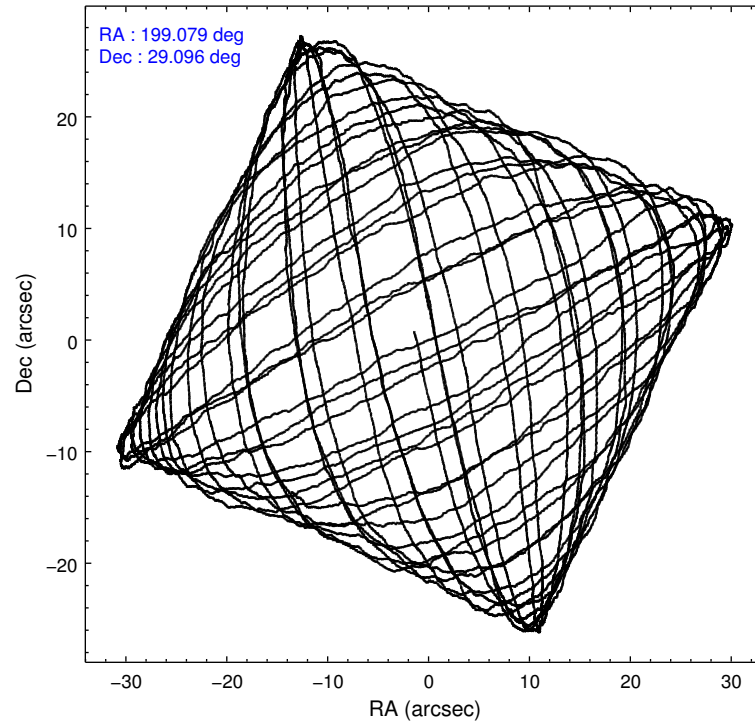
Level 1 Events

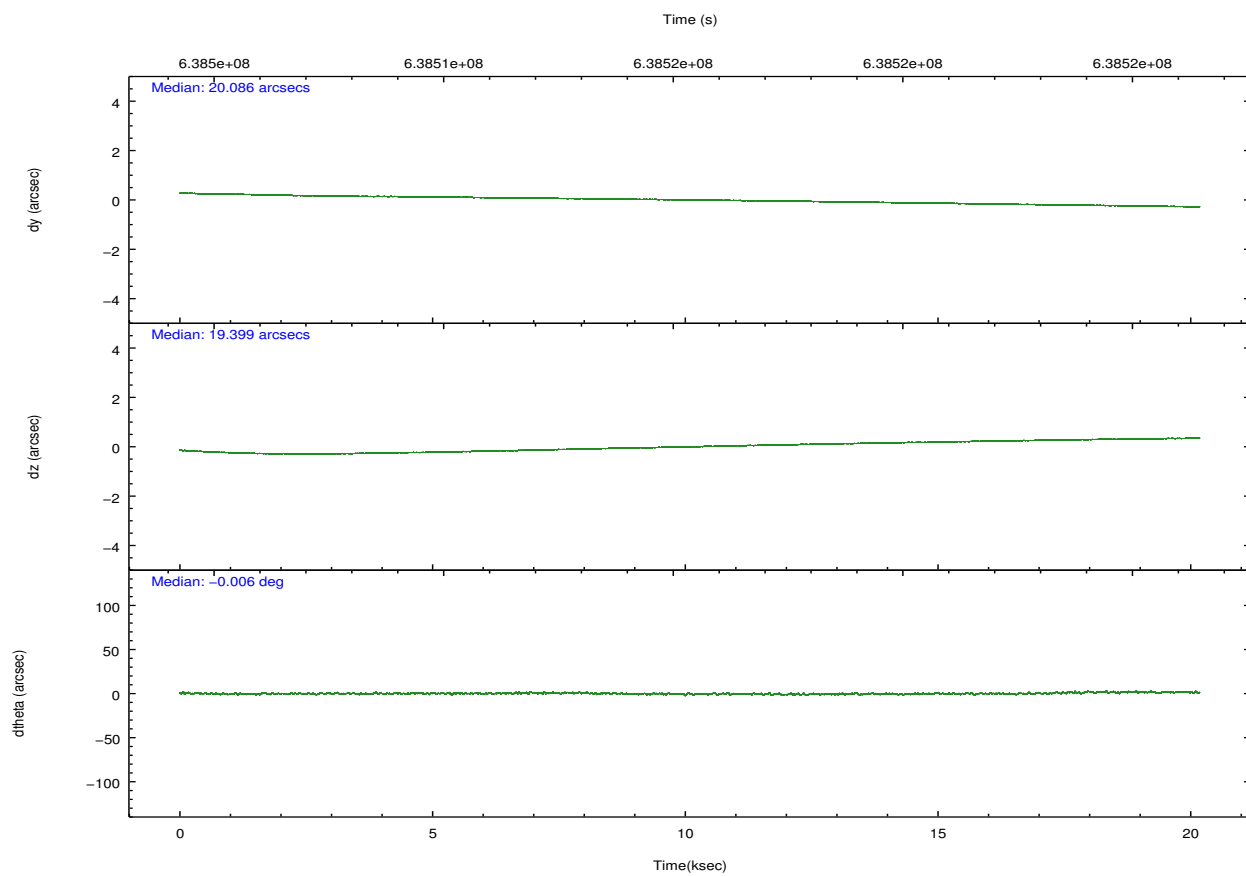
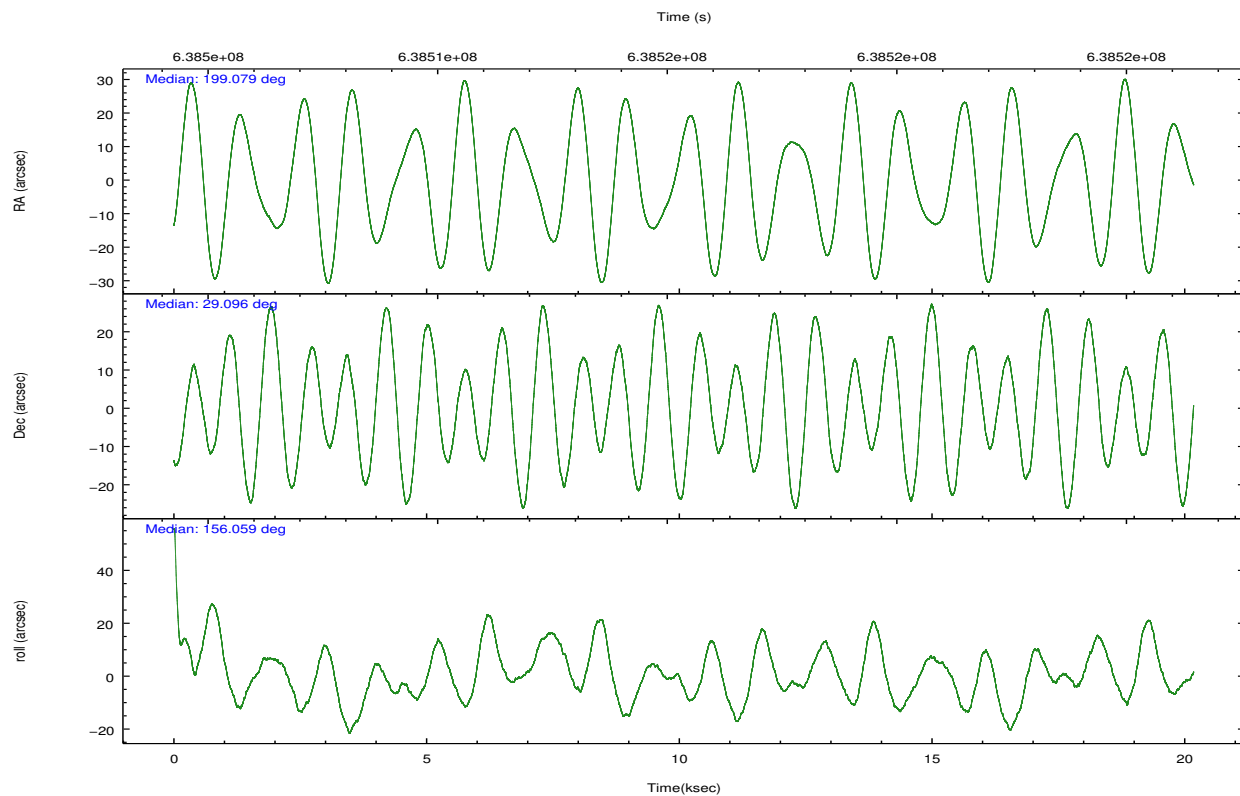
	segment 1	segment 2	segment 3
level 1 events	972860	876821	979627
rejected events	8767	8336	8949
rejected %	0%	0%	0%

2.2 Compared Parameters

Parameter	Planned	Actual	Parameter	Planned	Actual
Instrument	HRC	HRC	Obspar format version number	7	7
Detector	HRC-S	HRC-S	Obspar file type	PREDICTED	ACTUAL
Grating	LETG	LETG	Obspar update status	NONE	UPDATED
Data mode	OBSERVING	OBSERVING			
Observation mode	POINTING	POINTING			
[deg] Pointing RA	199.111059	199.0819201360604			
[deg] Pointing Dec	29.100462	29.0976847770125			
[deg] Pointing Roll	155.989969	156.0709157262315			
[s] Window start time (MET)	636249669.184000	636249669.184000			
[s] Window stop time (MET)	638841669.184000	638841669.184000			
[mm] SIM focus pos	-1.429586	-1.428180813131781			
[mm] SIM defocus	0.1037507710433287	0.1051558262725154			
[mm] SIM translation stage pos	250.455976	250.466033080201			
[mm] SIM translation stage offset	0	-0.01005468664627074			
[s] Observation start time (MET)	638505425.184000	638504749.09767			
Observation start date	2018-03-27T02:35:56	2018-03-27T02:25:49			
[s] Observation end time (MET)	638525425.184000	638526276.66144			
Observation end date	2018-03-27T08:09:16	2018-03-27T08:24:36			

2.3 Aspect



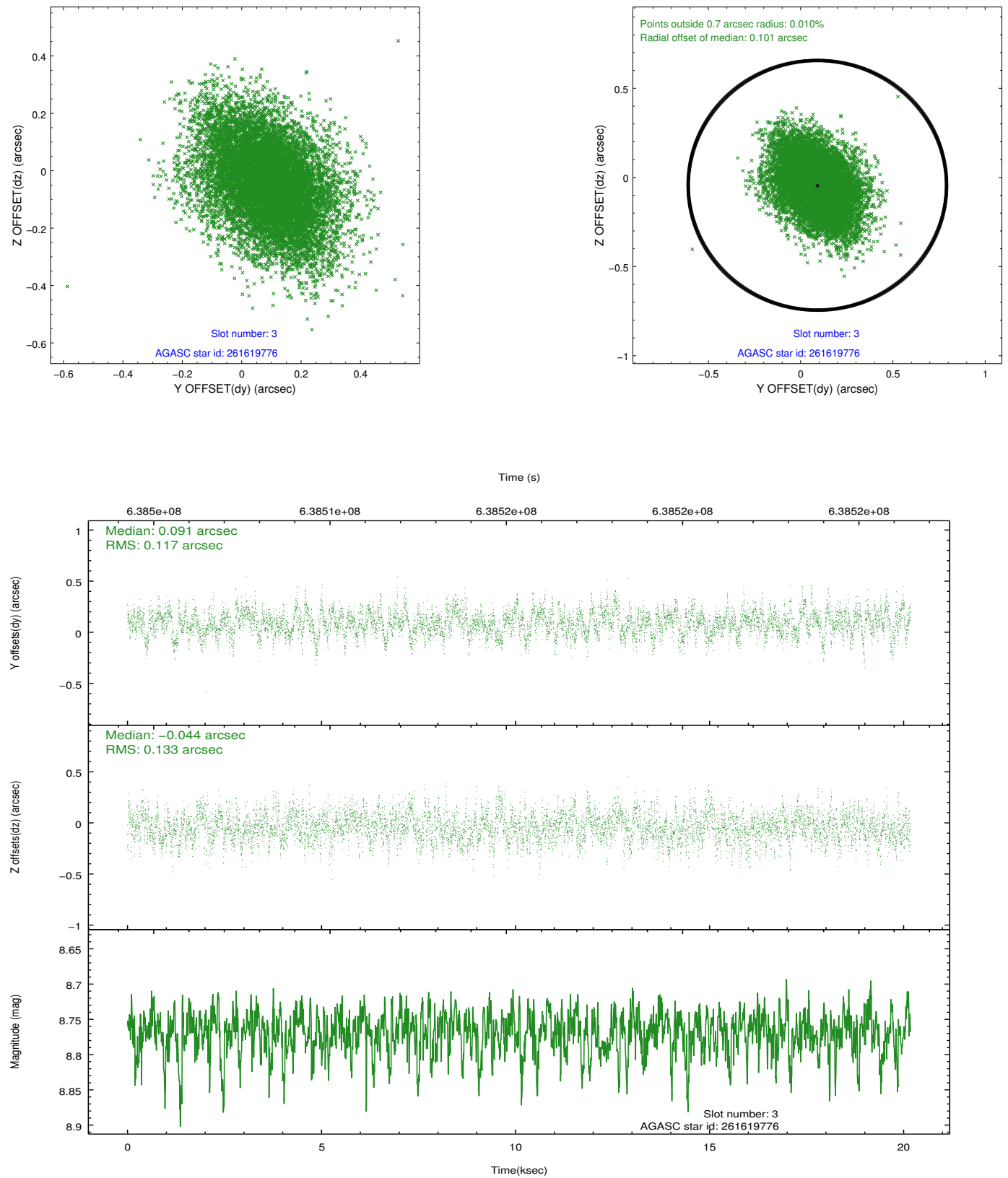


Slot Statistics

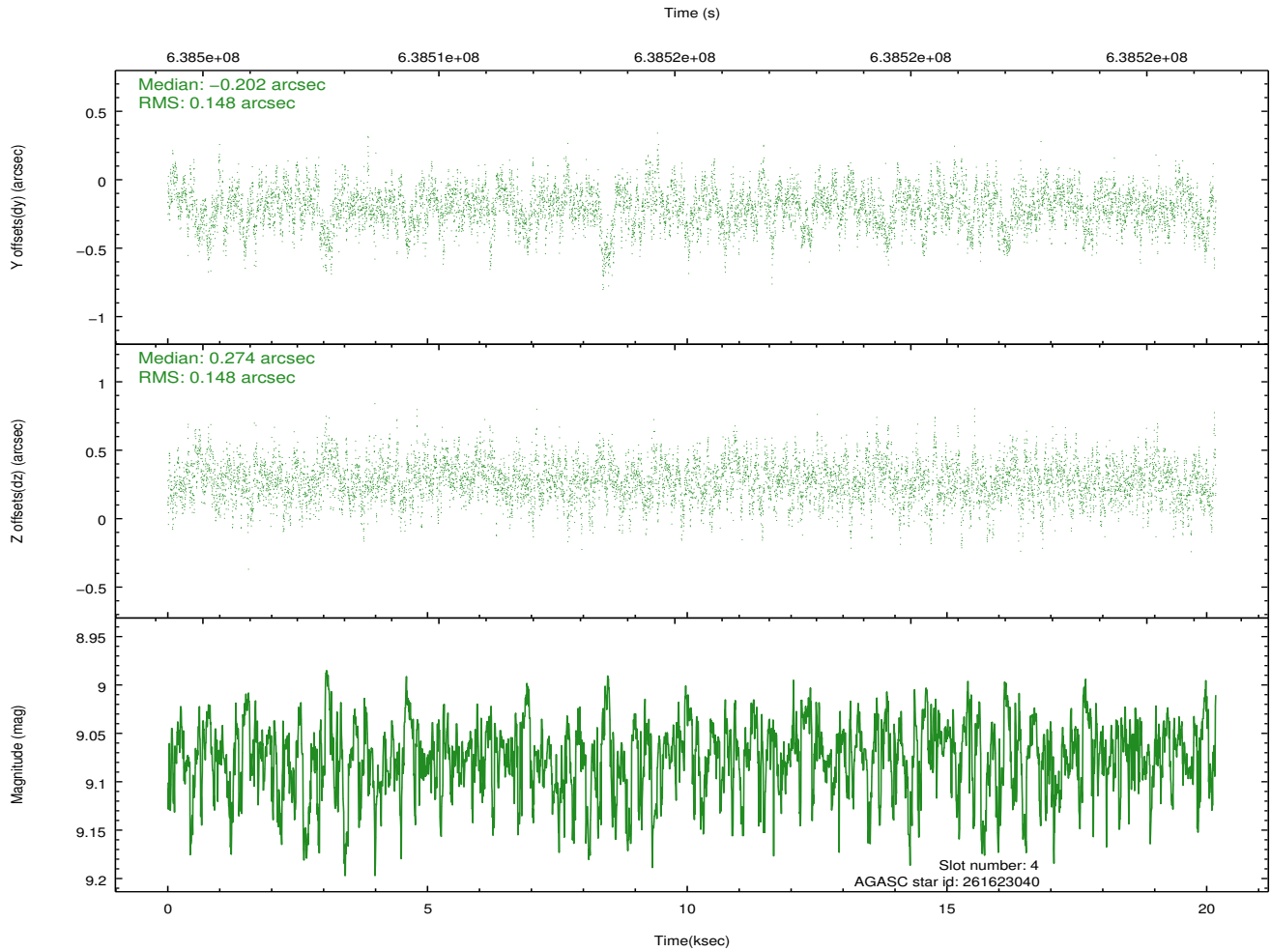
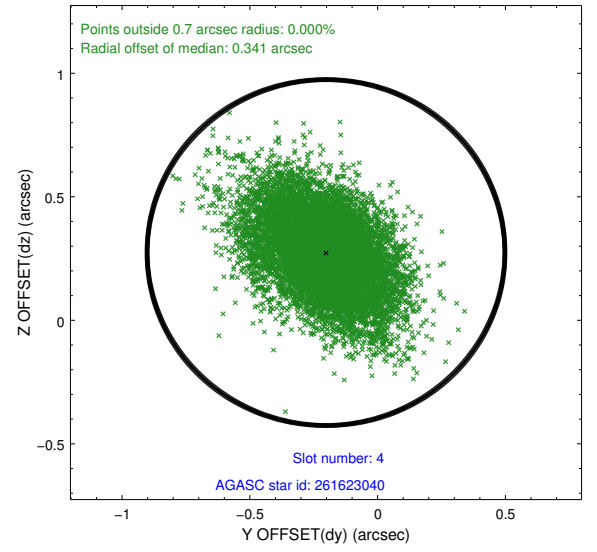
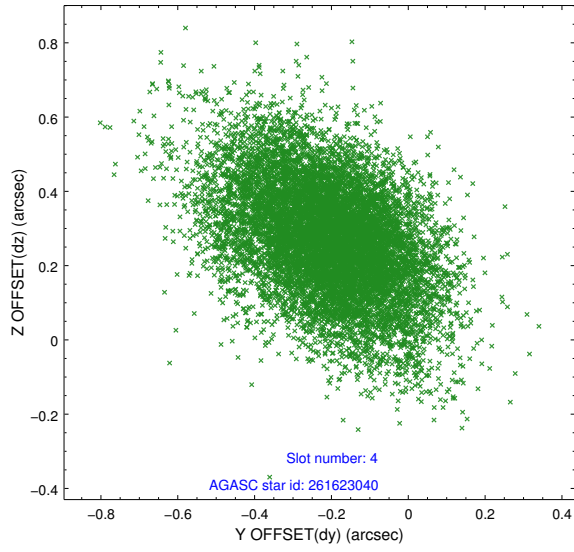
slot	status	used	id	mag	n_pts	med_dy	med_dz	dr1	dr2	ra	dec	mean_y	mean_z
0	FID		HRC-S-1	7.08	4920	-0.081	-0.272	0.011	0.018	0.000000	0.000000	-1174.74	-468.57
1	FID		HRC-S-2	7.02	4922	0.379	-0.116	0.007	0.013	0.000000	0.000000	1225.16	-461.03
2	FID		HRC-S-3	7.04	4922	0.092	0.085	0.010	0.017	0.000000	0.000000	-1177.09	561.22
3	GUIDE	used	261619776	8.77	9834	0.091	-0.044	0.187	0.313	198.654383	29.401174	1749.70	-408.02
4	GUIDE	used	261623040	9.07	9837	-0.202	0.274	0.217	0.368	198.792686	29.757643	1873.30	-1756.90
5	GUIDE	used	261621400	6.96	9842	-0.191	-0.112	0.156	0.270	198.901600	28.741982	80.03	1447.19
6	GUIDE	used	261629720	8.09	9783	0.410	0.241	0.148	0.256	199.236176	29.044452	-440.55	23.95
7	GUIDE	used	261619992	9.25	9833	-0.098	-0.359	0.218	0.358	198.395553	28.647634	1404.40	2402.67

2.4 Star Slots

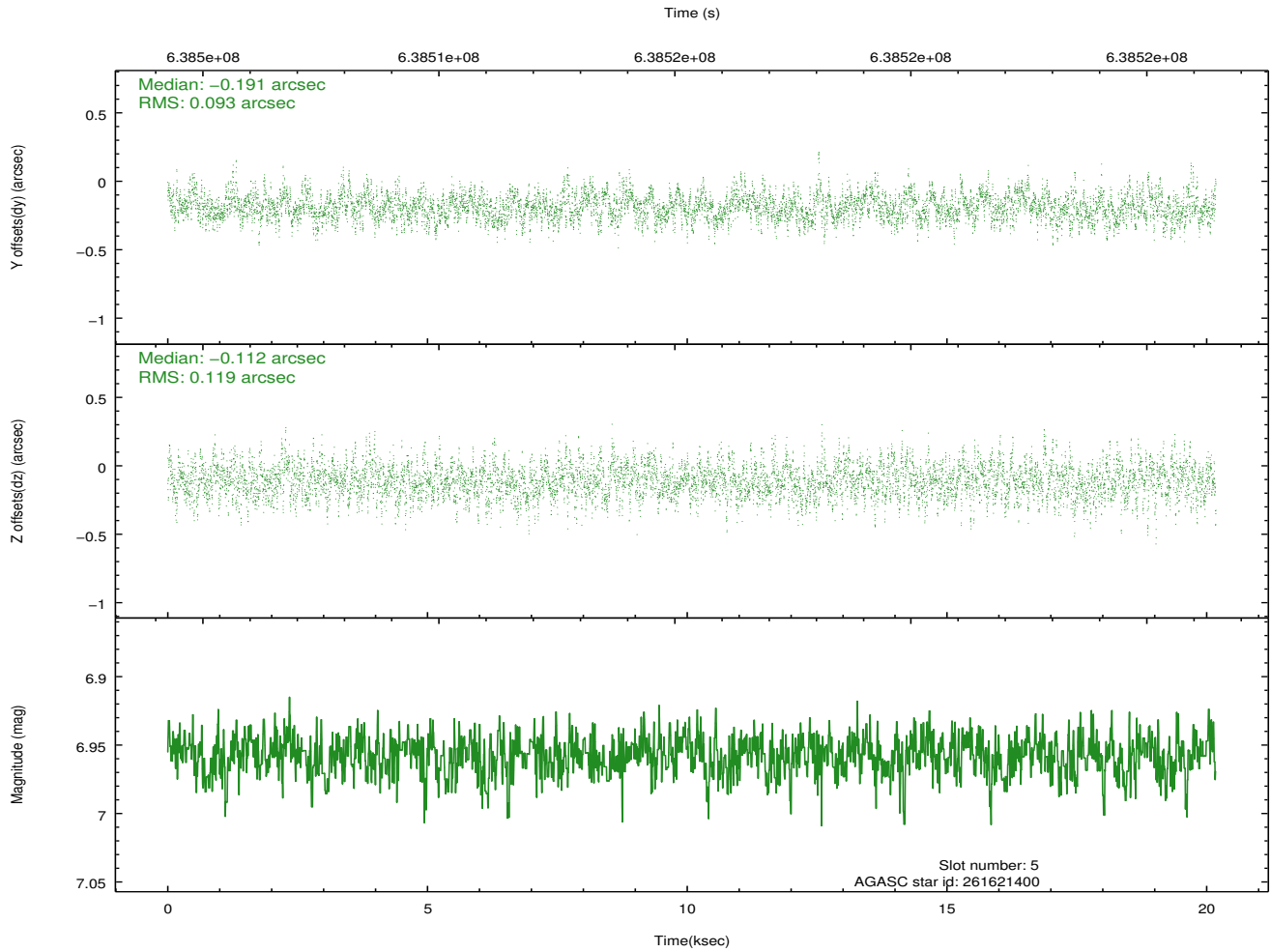
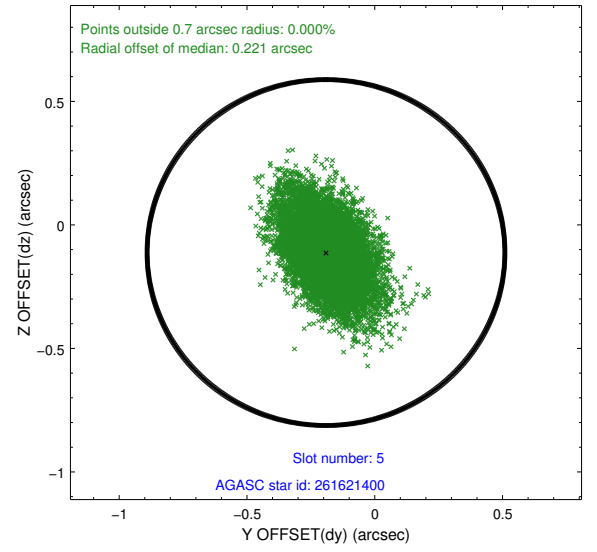
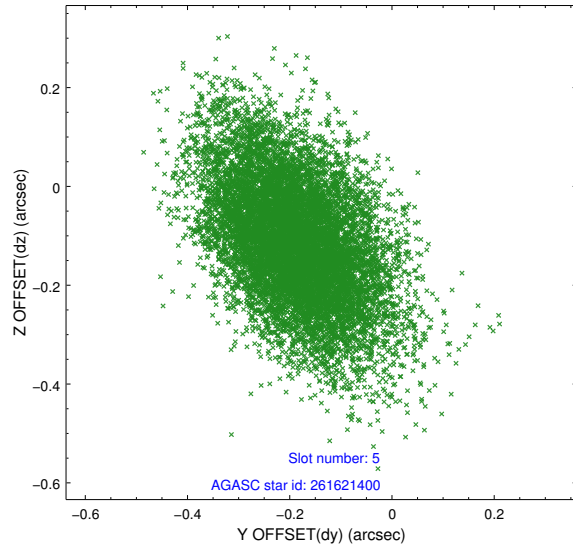
2.4.1 Slot 3



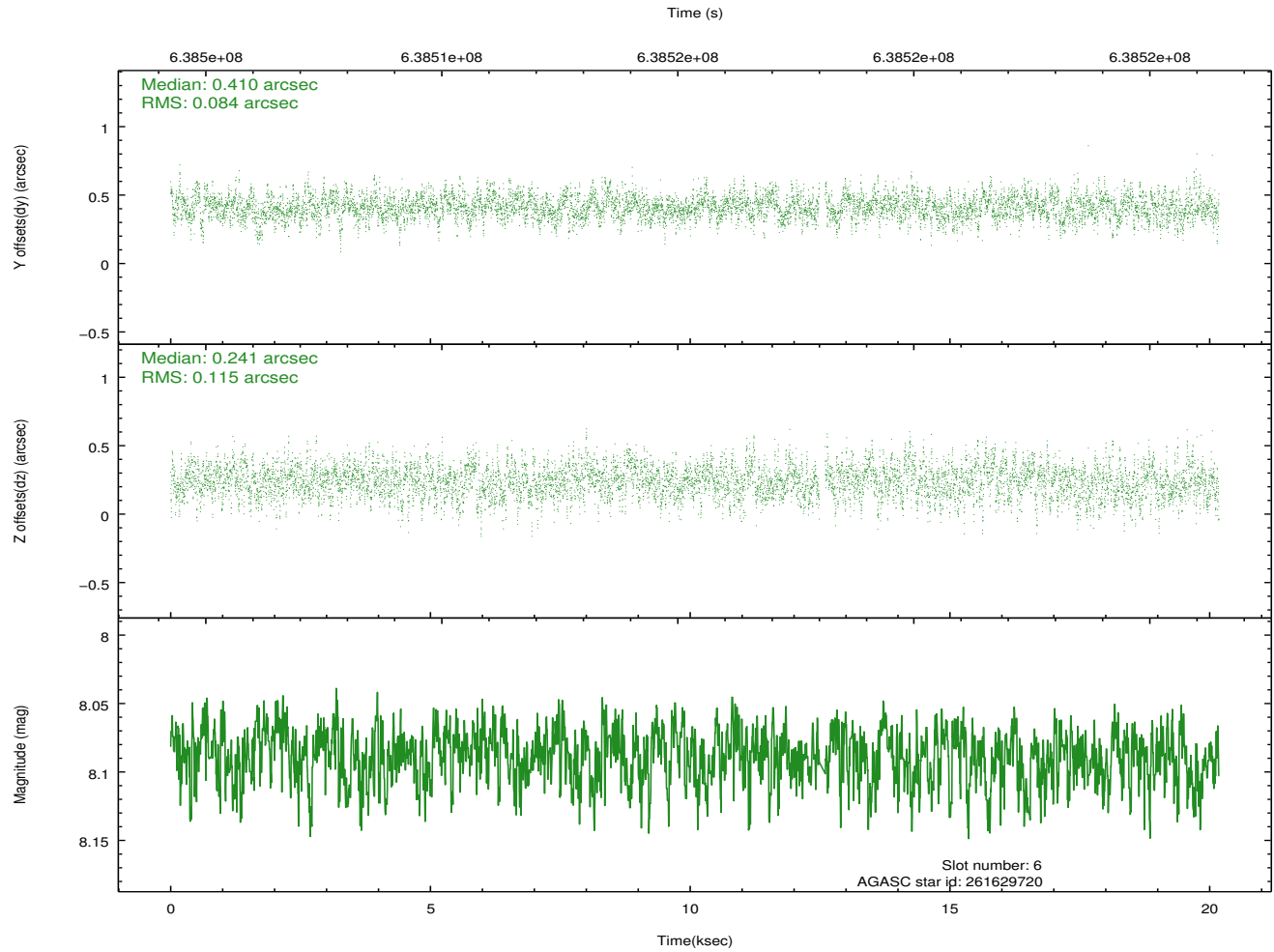
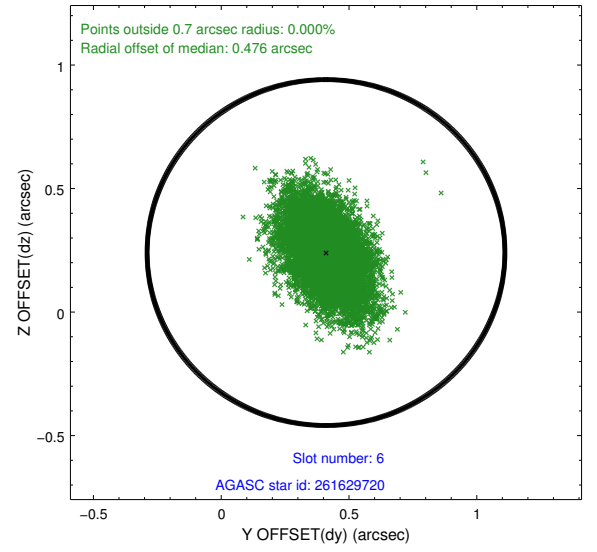
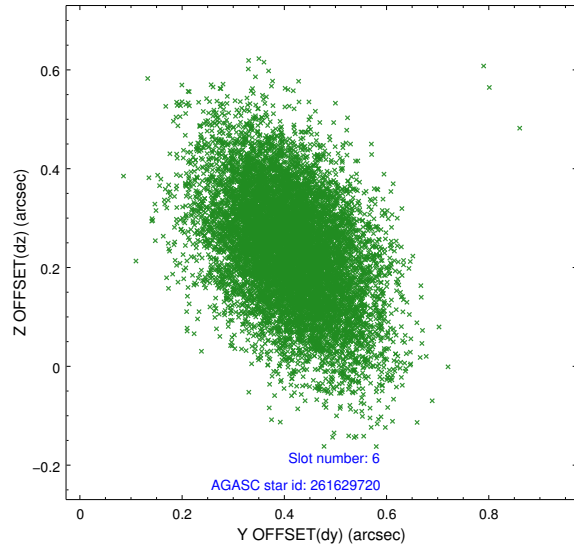
2.4.2 Slot 4



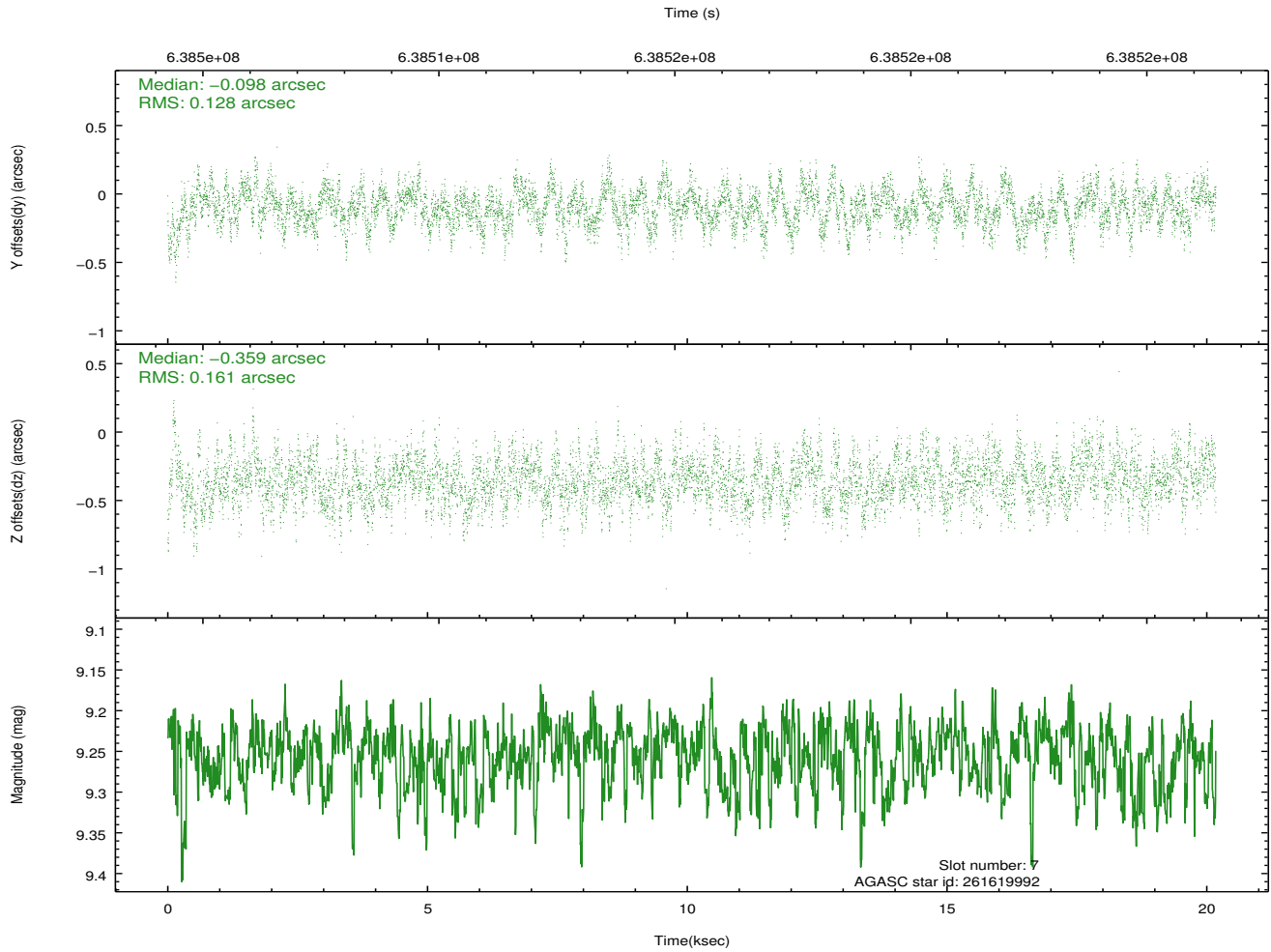
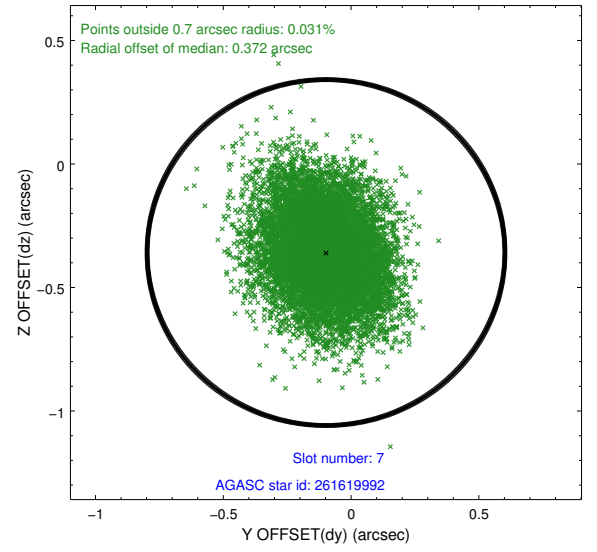
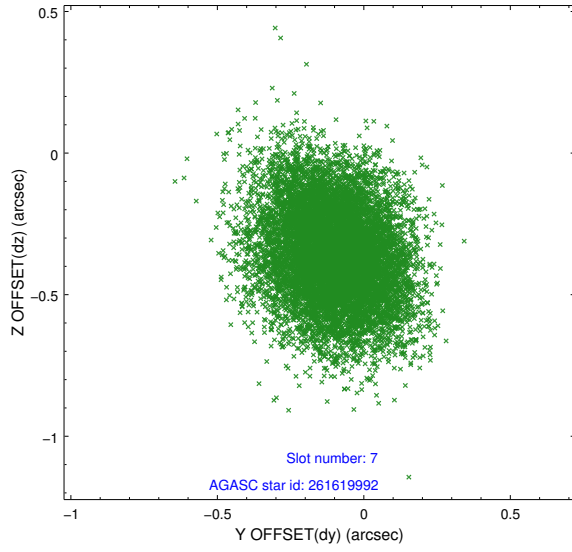
2.4.3 Slot 5



2.4.4 Slot 6

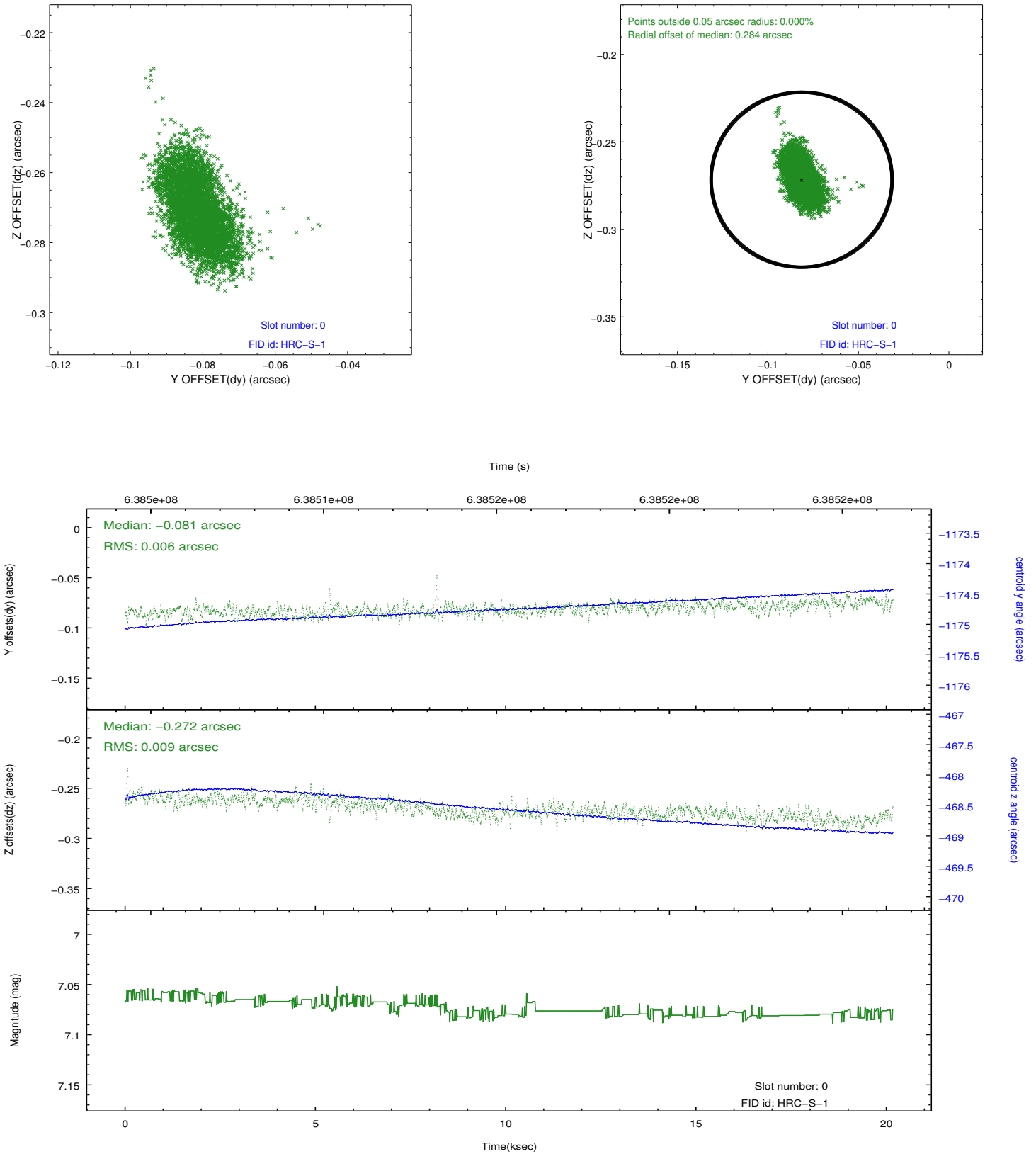


2.4.5 Slot 7

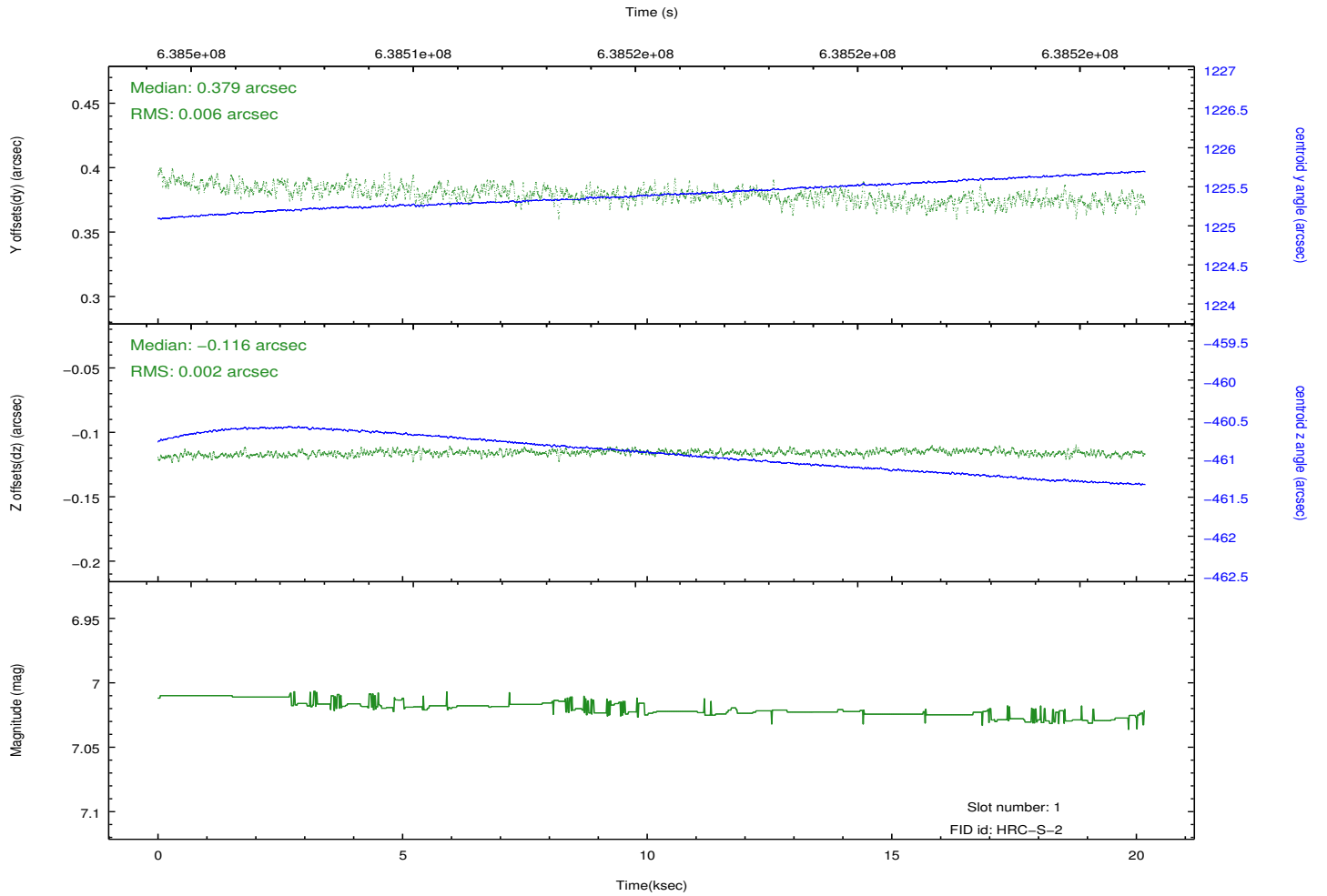
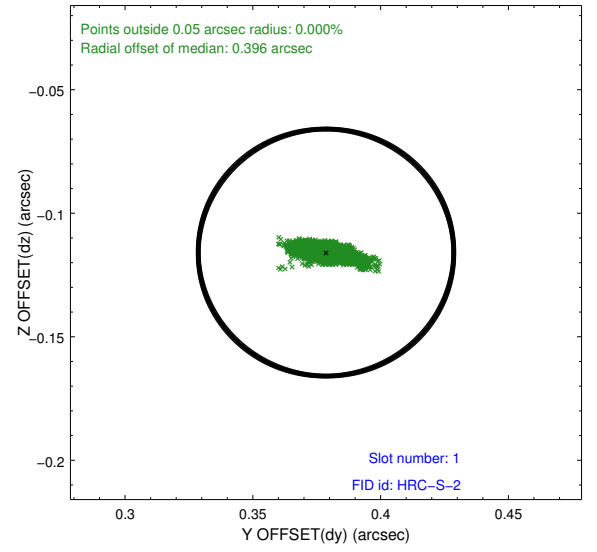
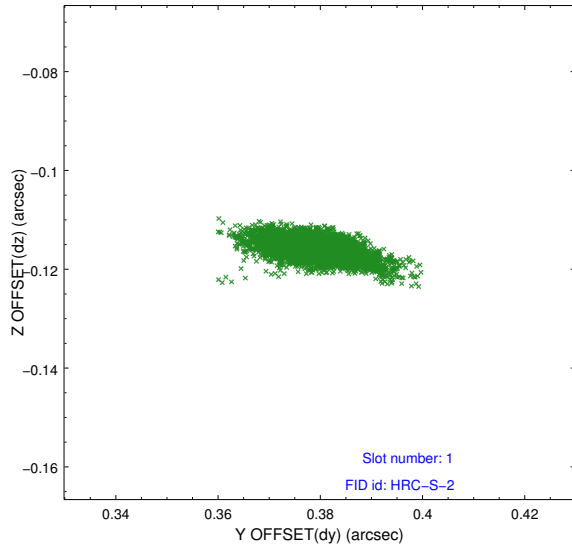


2.5 FID Slots

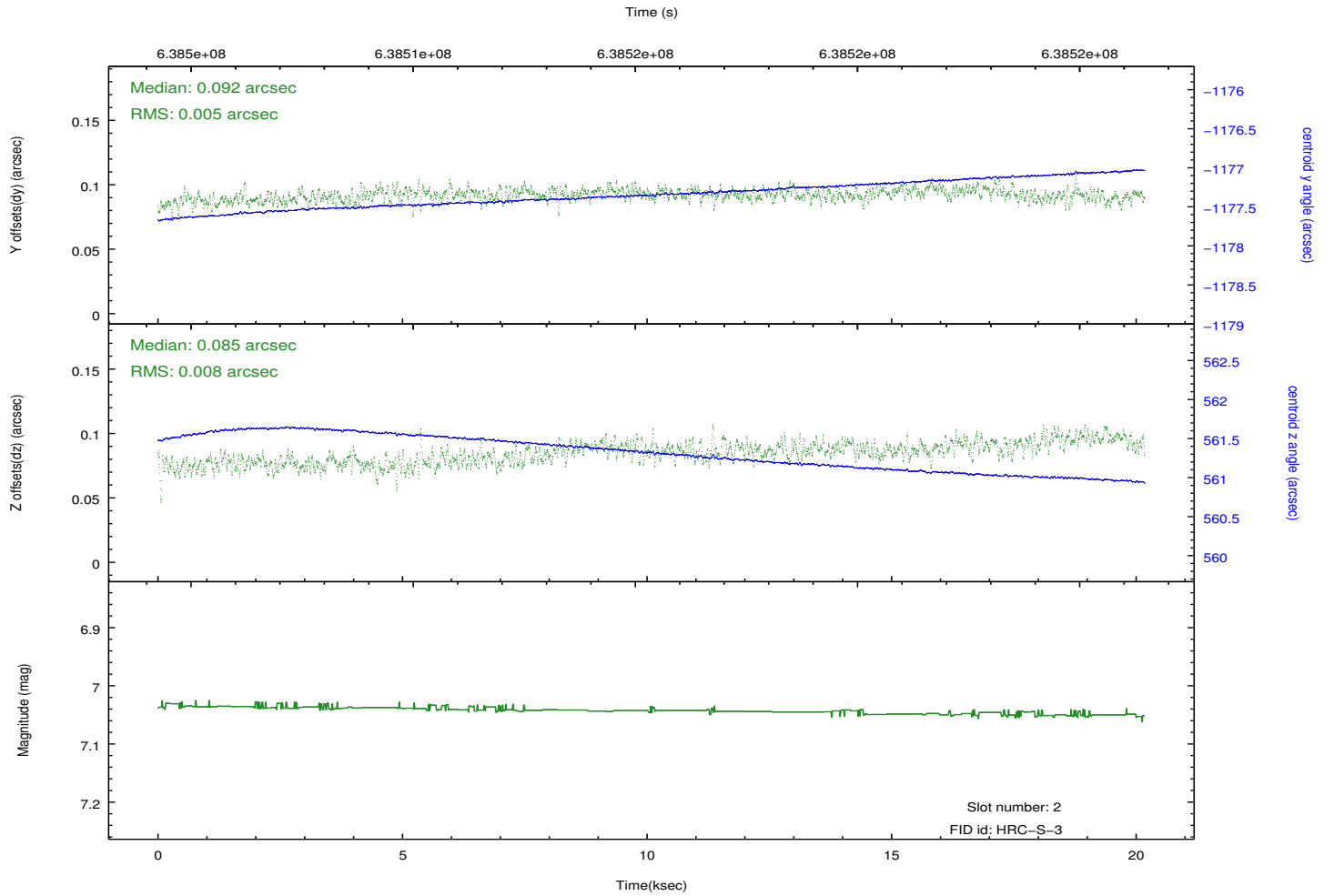
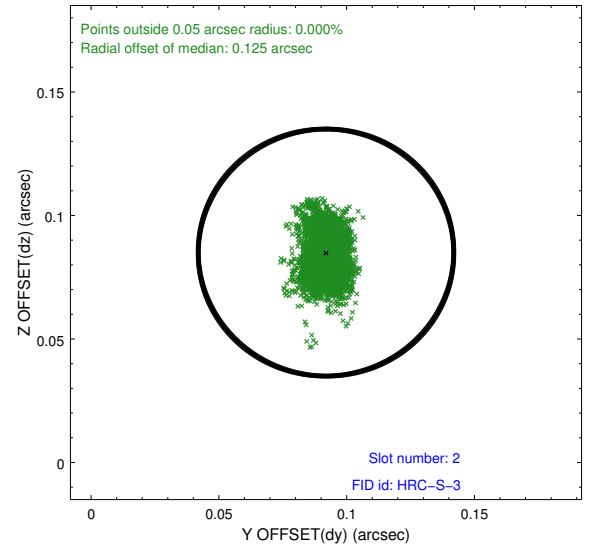
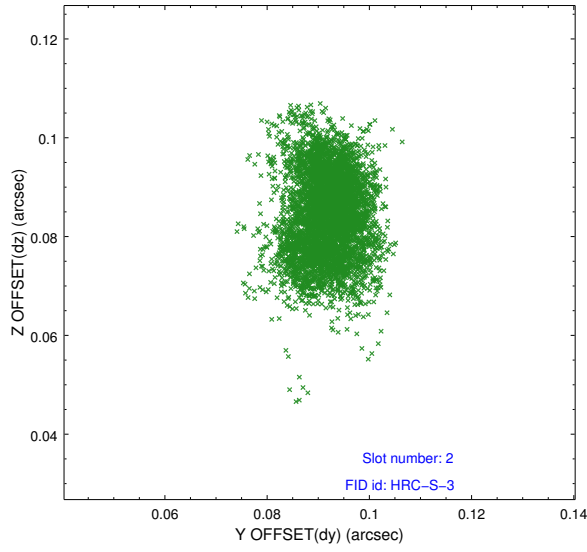
2.5.1 Slot 0



2.5.2 Slot 1

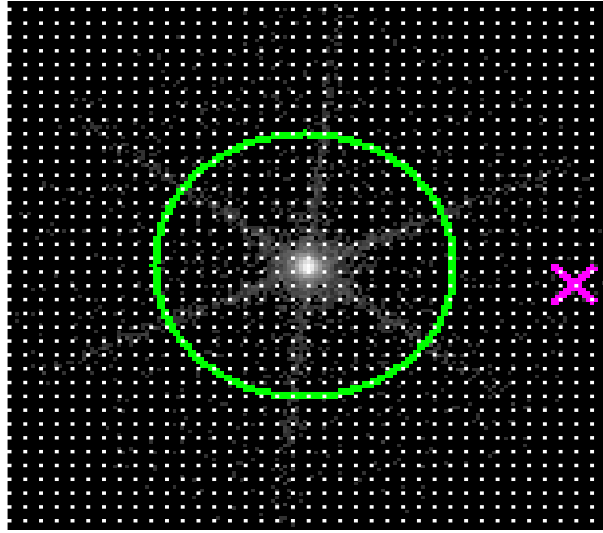


2.5.3 Slot 2

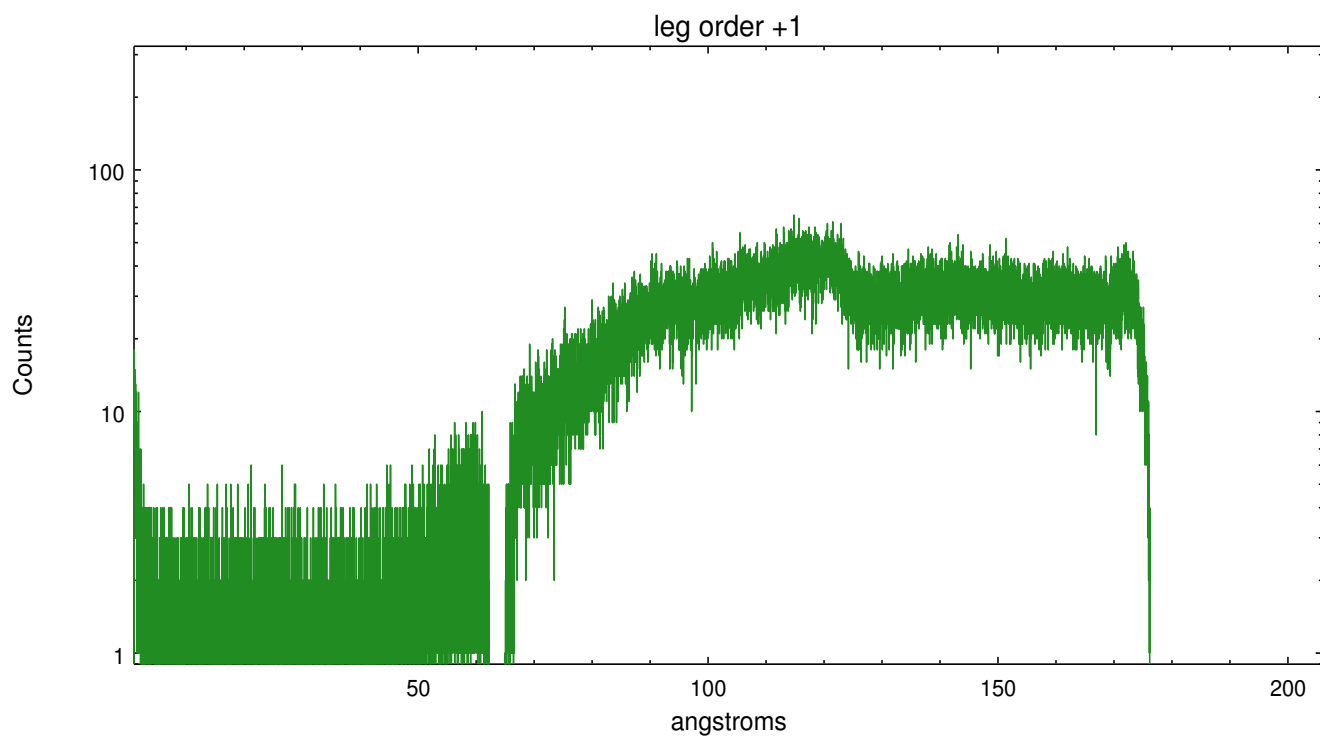
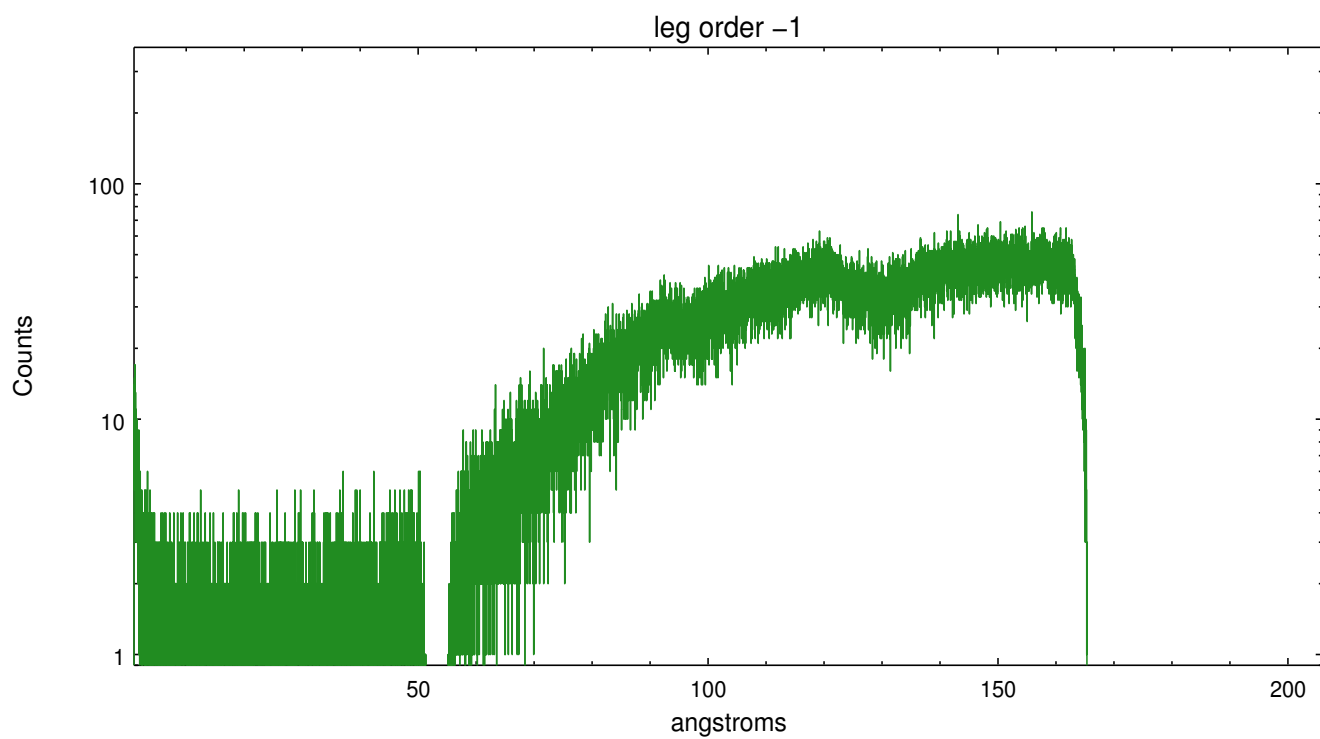


3 Gratings

3.1 LETG Arm



LETG Zero Order



A Summary

A.1 Status

V&V Scientist	Joy Nichols
V&V Date (YYYY-MM-DD)	2018.03.27
V&V Edition	1
V&V Disposition and Status	OK
V&V Charge Time	20.177126190424

A.2 Comments