

V&V Reference Report

L2 ASCDS Version : 10.6

Observation 19855 - L2 Version 1
Chandra X-Ray Center

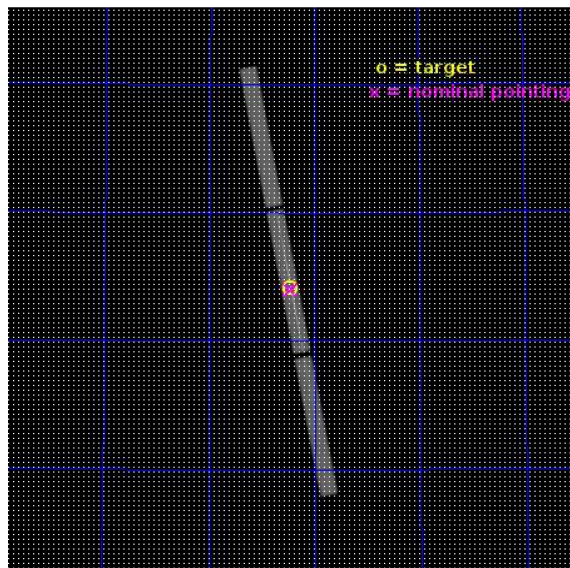
L2 Processing Date : Jun 23 2017

Contents

1	Front	2
2	OBI	3
2.1	OBI	3
2.1.1	Images	3
2.1.2	Parameters	4
2.1.3	Events	4
2.2	Compared Parameters	5
2.3	Aspect	6
2.4	Star Slots	9
2.4.1	Slot 3	9
2.4.2	Slot 4	10
2.4.3	Slot 5	11
2.4.4	Slot 6	12
2.4.5	Slot 7	13
2.5	FID Slots	14
2.5.1	Slot 0	14
2.5.2	Slot 1	15
2.5.3	Slot 2	16
3	Gratings	17
3.1	LETG Arm	17
A	Summary	19
A.1	Status	19
A.2	Comments	19

1 Front

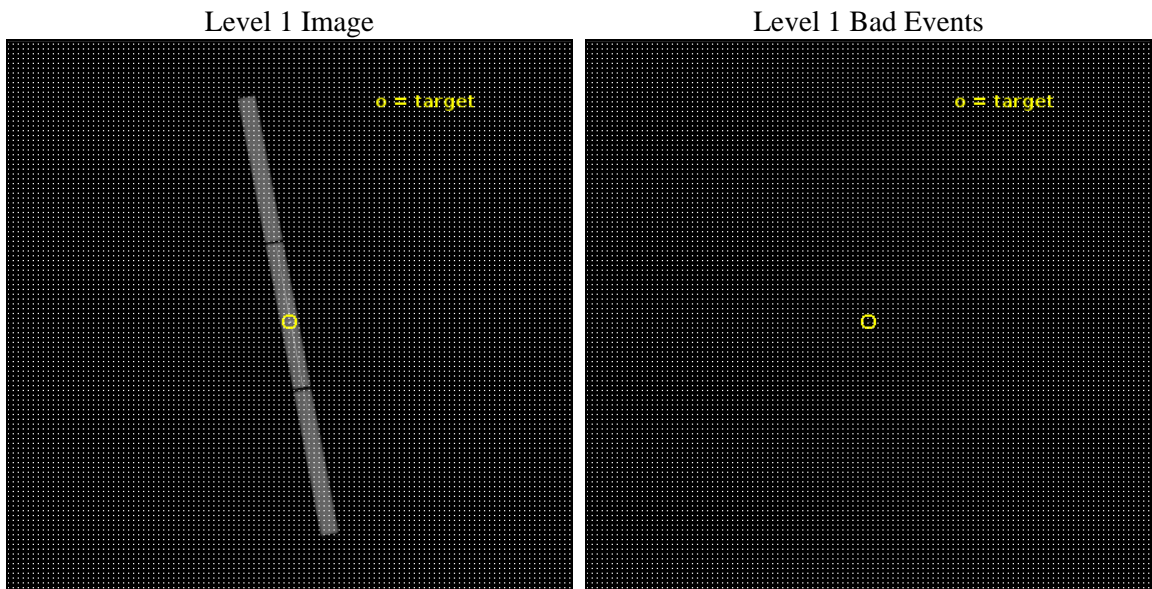
seq_num	790295	Sequence number
obs_id	19855	Observation id
title	AO-18 Calibration Observations of Mkn421	Proposal title
observer	CXC Calibration	Principal investigator
object	MKN421	Source name
ra_targ	166.113333	Observer's specified target RA [deg]
dec_targ	38.208806	Observer's specified target Dec [deg]
ra_nom	166.1187039633	Nominal RA [deg]
dec_nom	38.20024507139	Nominal Dec [deg]
roll_nom	259.55371117865	Nominal Roll [deg]
revision	1	Processing version of data
ontime	10149.55059123	[s]
livetime	10040.299980417	Ontime multiplied by DTCOR
l2events	1037068	Number of level 2 events



2 OBI

2.1 OBI

2.1.1 Images



2.1.2 Parameters

obi_num	0	Obi number	sched_exp_time	10000.000000	[s] Scheduled observation exposure time
ascdsver	10.6	Processing system revision	ontime	10149.55059123	[s]
caldsver	4.7.5	 	l1events	1254190	Number of level 1 events
date	2017-06-23T14:17:31	Date and time of file creation	tgmethod	TGDETECT	Method used to create src1a file
revision	1	Processing version of data	zo_pos	(32871.77, 33004.66)	src1a sky pixel position

2.1.3 Events

Level 1 Events

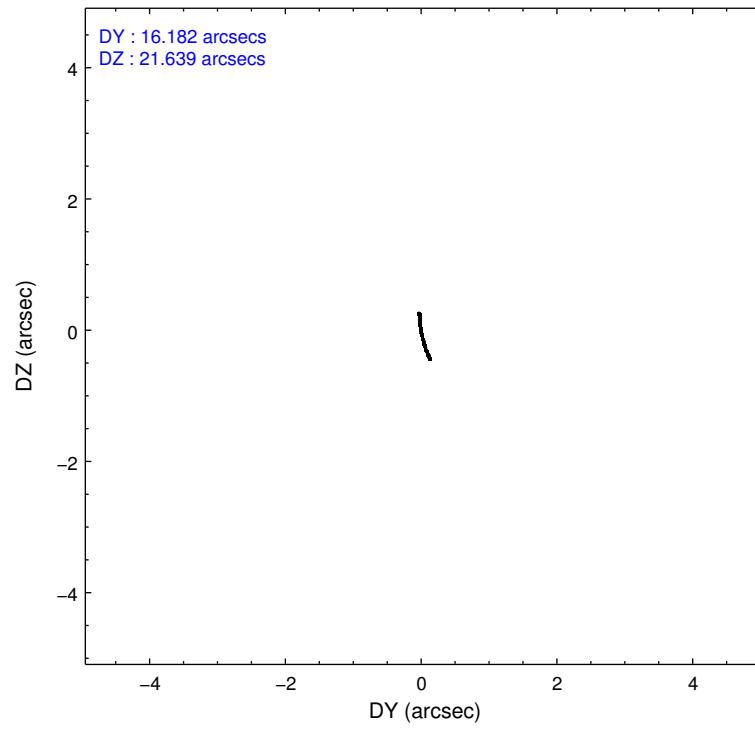
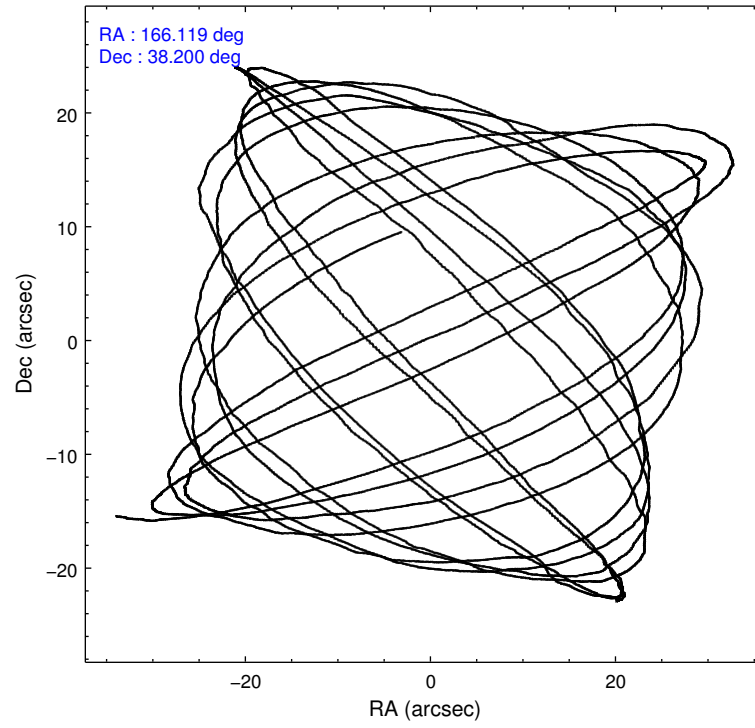
	segment 1	segment 2	segment 3
level 1 events	365097	521468	367625
rejected events	1120	1606	1288
rejected %	0%	0%	0%

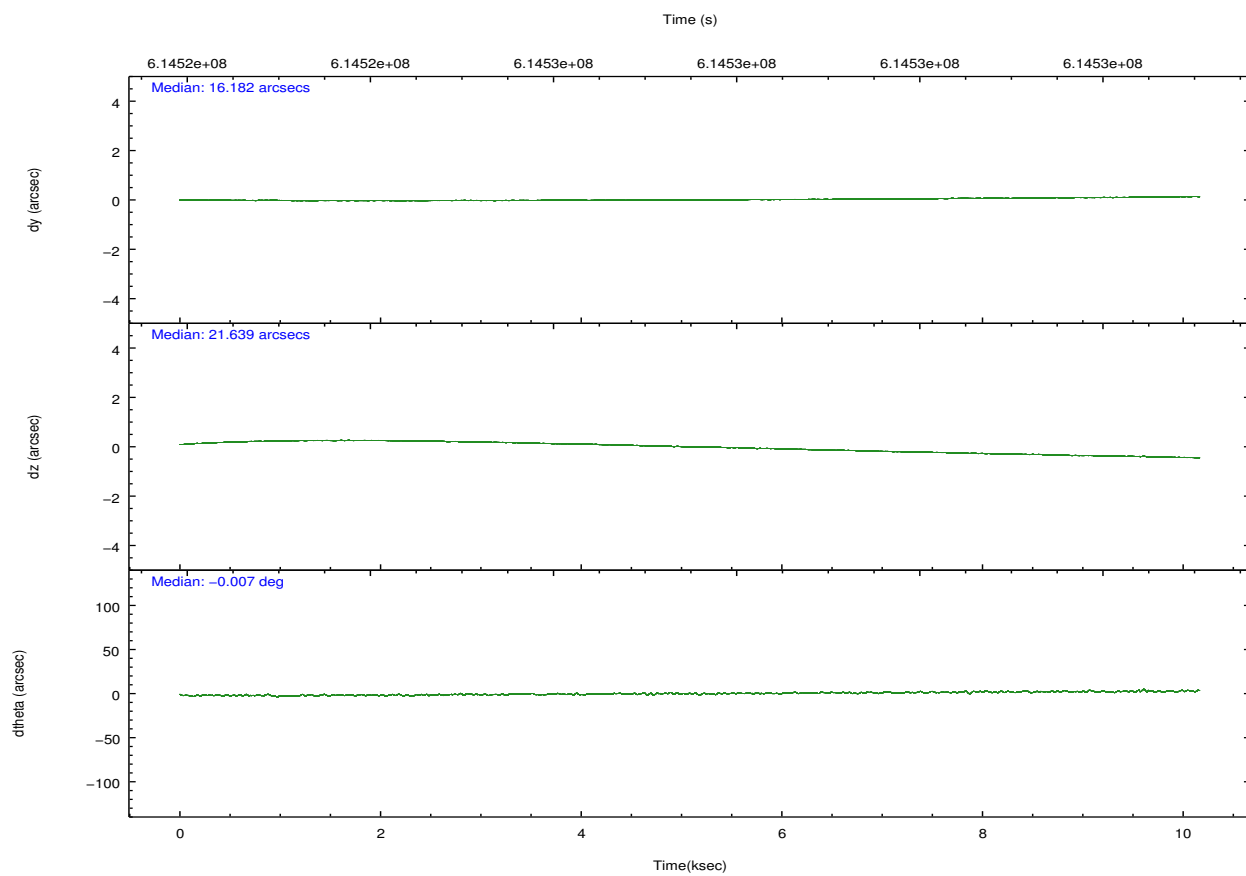
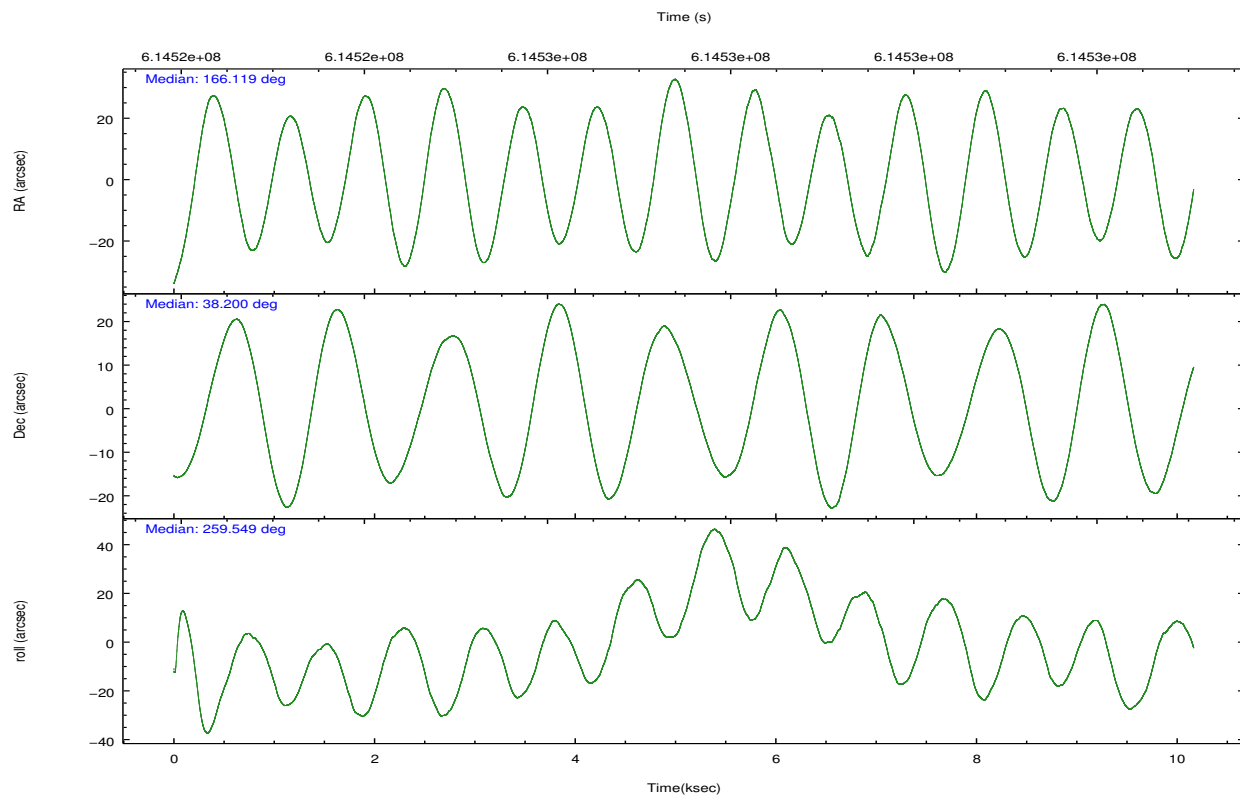
2.2 Compared Parameters

Parameter	Planned	Actual
Instrument	HRC	HRC
Detector	HRC-S	HRC-S
Grating	LETG	LETG
Data mode	OBSERVING	OBSERVING
Observation mode	POINTING	POINTING
[deg] Pointing RA	166.104867	166.1187039633013
[deg] Pointing Dec	38.227041	38.20024507139036
[deg] Pointing Roll	259.494988	259.5537111786479
[mm] SIM focus pos	-1.429586	-1.428180813131781
[mm] SIM defocus	0.1037507710433287	0.1051558262725154
[mm] SIM translation stage pos	250.455976	250.466033080201
[mm] SIM translation stage offset	0	-0.01005468664627074
[s] Observation start time (MET)	614522565.184000	614522100.5786
Observation start date	2017-06-22T12:41:36	2017-06-22T12:35:00
[s] Observation end time (MET)	614532565.184000	614532829.76673
Observation end date	2017-06-22T15:28:16	2017-06-22T15:33:49

Parameter	Planned	Actual
Obspar format version number	7	7
Obspar file type	PREDICTED	ACTUAL
Obspar update status	NONE	UPDATED

2.3 Aspect



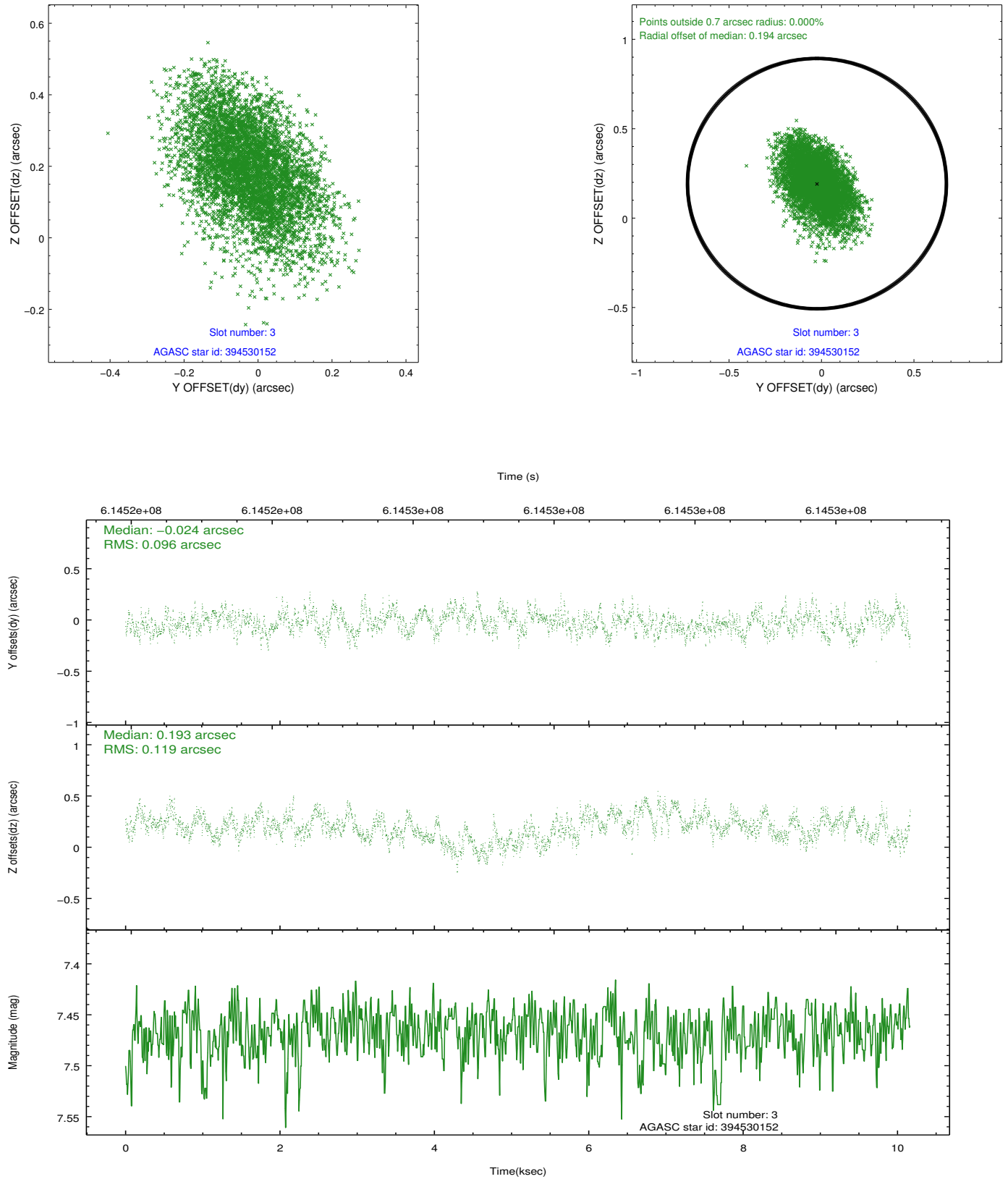


Slot Statistics

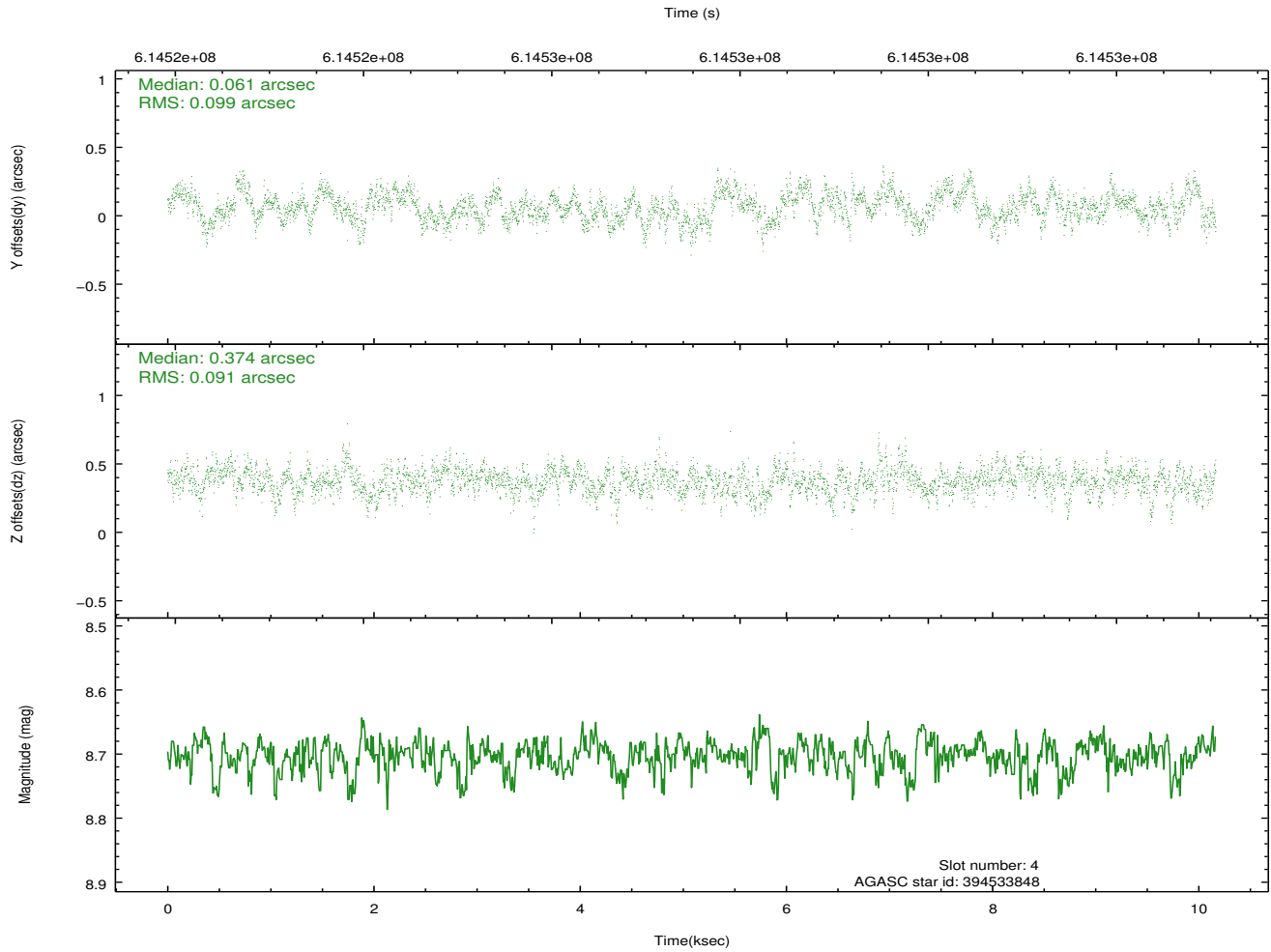
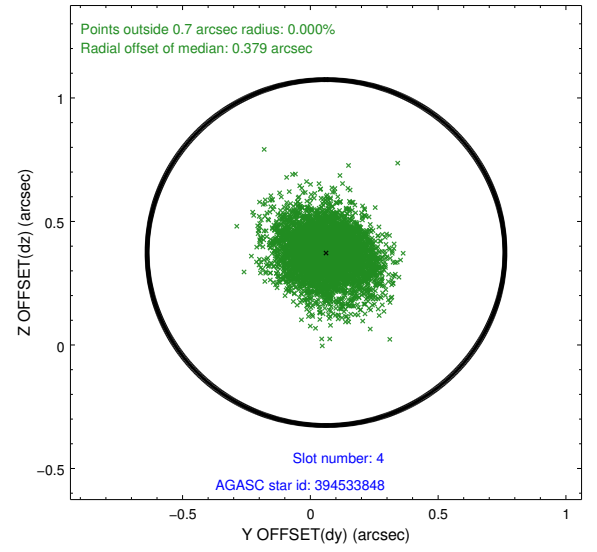
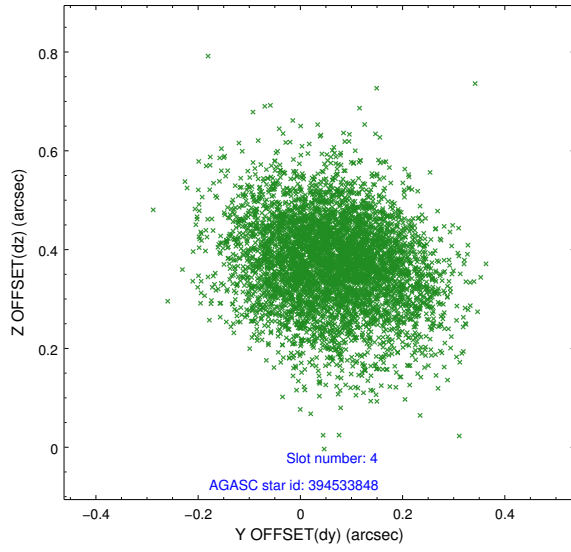
slot	status	used	id	mag	n_pts	med_dy	med_dz	dr1	dr2	ra	dec	mean_y	mean_z
0	FID		HRC-S-1	7.03	2480	-0.072	-0.163	0.013	0.024	0.000000	0.000000	-1170.73	-470.73
1	FID		HRC-S-2	7.00	2480	0.373	-0.117	0.006	0.011	0.000000	0.000000	1228.92	-463.37
2	FID		HRC-S-3	7.02	2480	0.089	-0.023	0.016	0.028	0.000000	0.000000	-1172.86	558.75
3	GUIDE	used	394530152	7.47	4960	-0.024	0.193	0.161	0.274	166.075805	38.868252	-2254.90	-500.48
4	GUIDE	used	394533848	8.70	4957	0.061	0.374	0.142	0.233	166.382906	38.276007	-318.25	735.00
5	GUIDE	used	394543960	9.73	4944	0.111	0.277	0.280	0.440	165.802757	37.787371	1711.65	-555.74
6	GUIDE	used	394546712	6.58	4960	-0.307	0.333	0.125	0.212	166.451462	38.394357	-771.92	850.78
7	GUIDE	used	394546720	6.41	4959	0.155	-1.171	0.135	0.216	166.130115	38.241361	-63.80	60.27

2.4 Star Slots

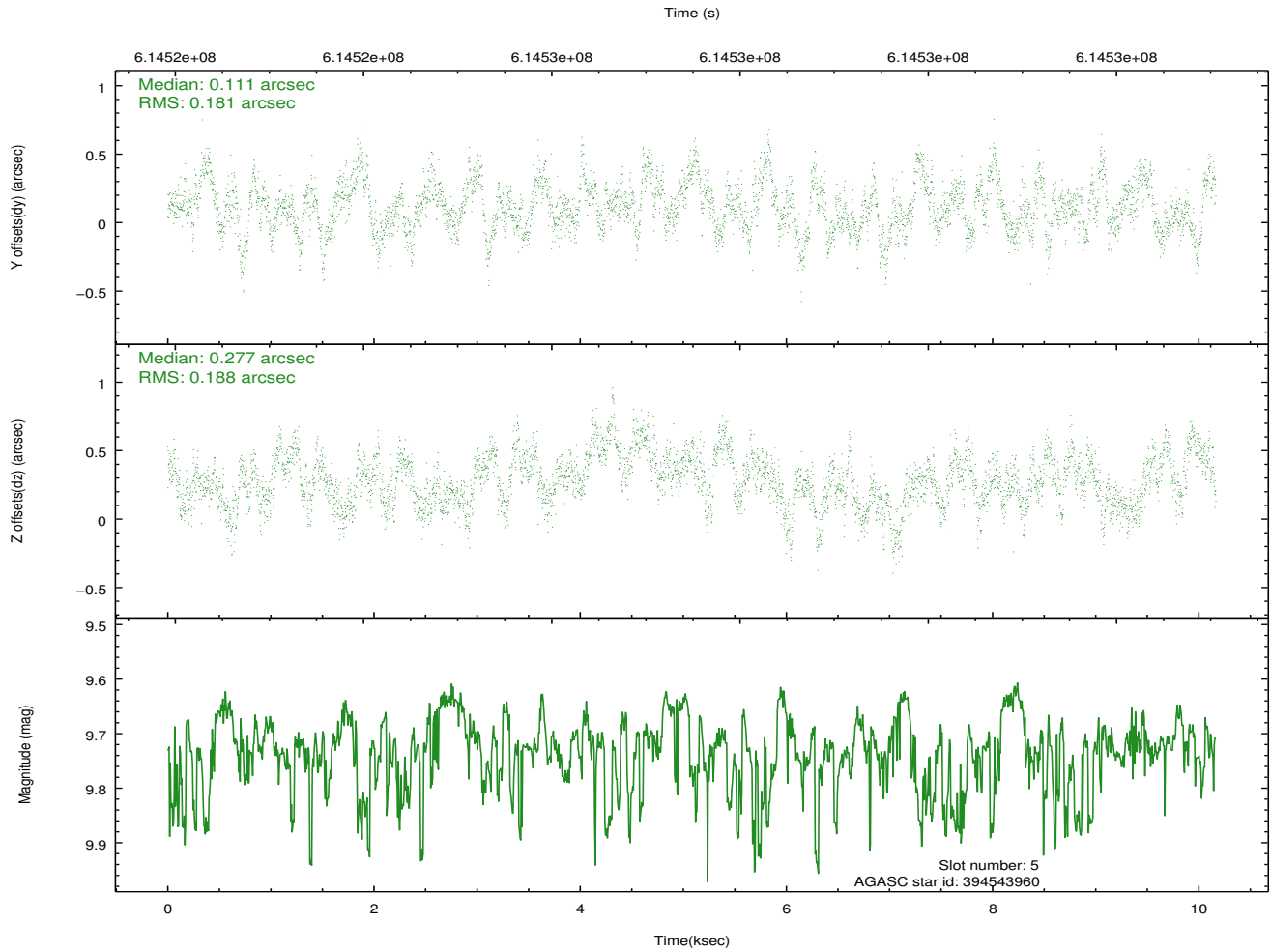
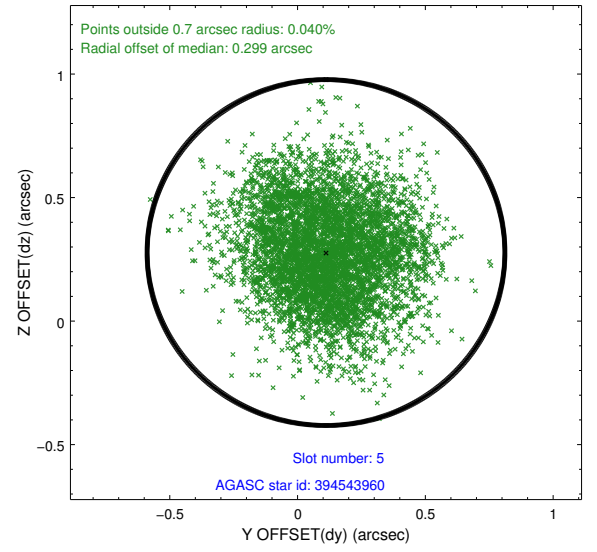
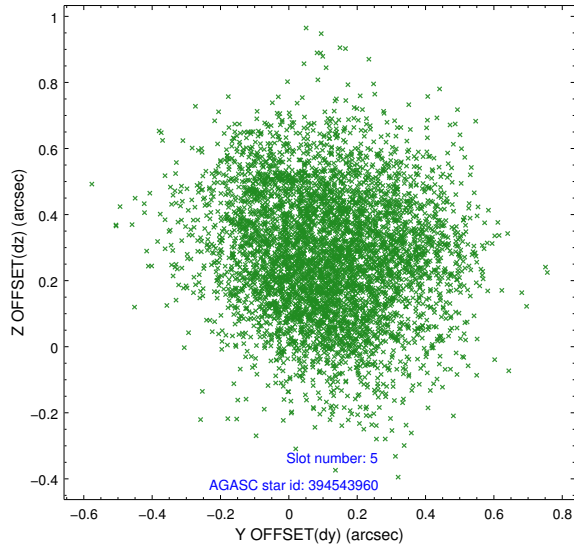
2.4.1 Slot 3



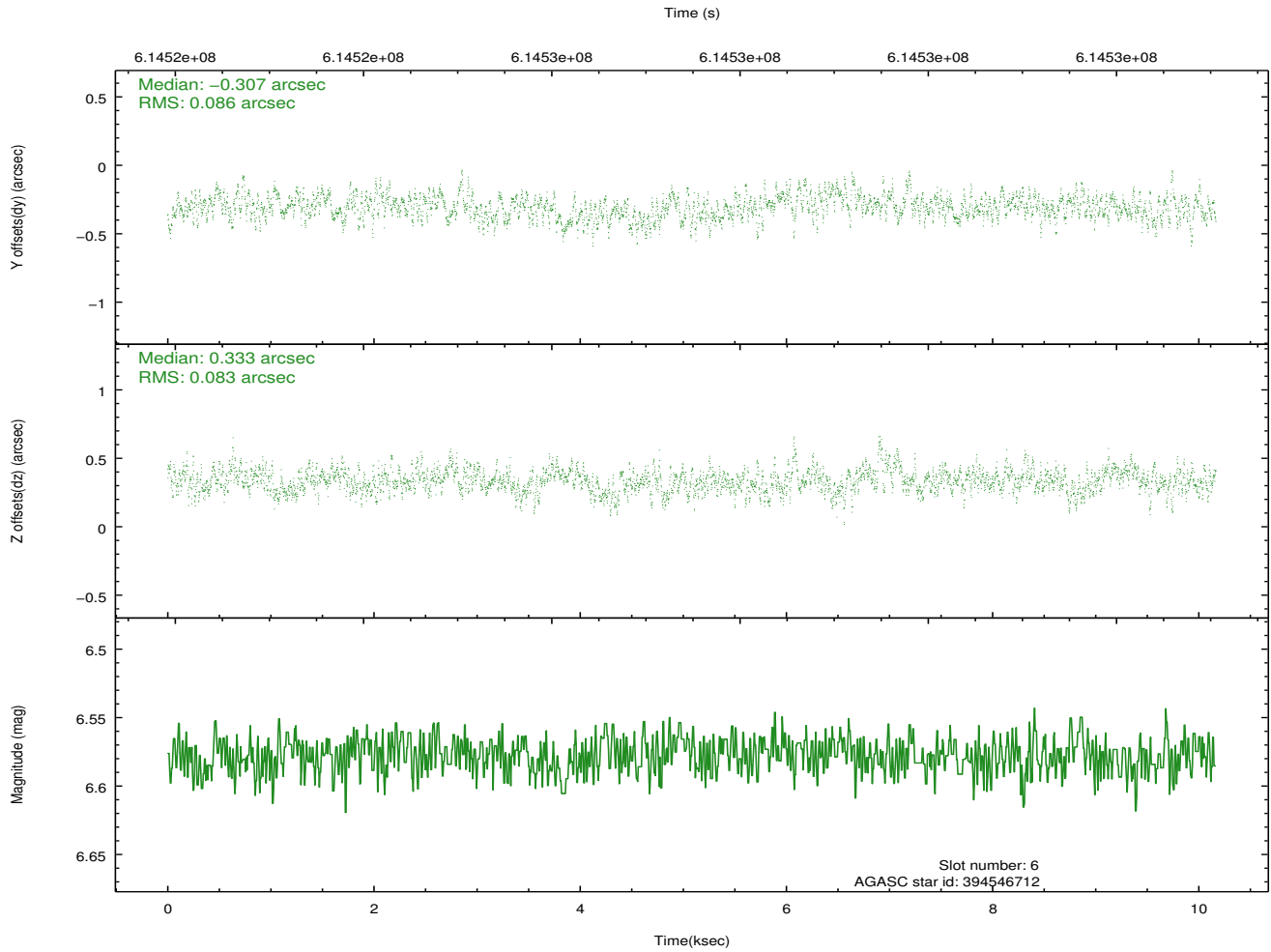
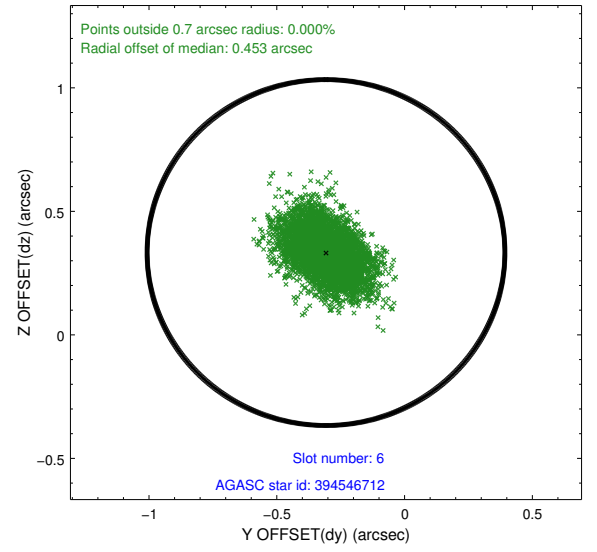
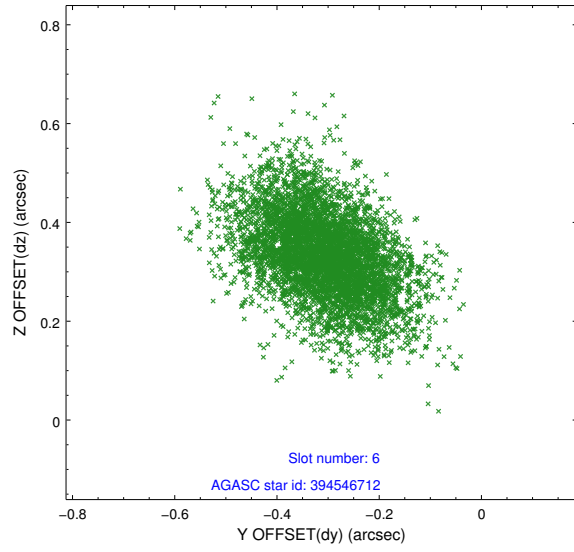
2.4.2 Slot 4



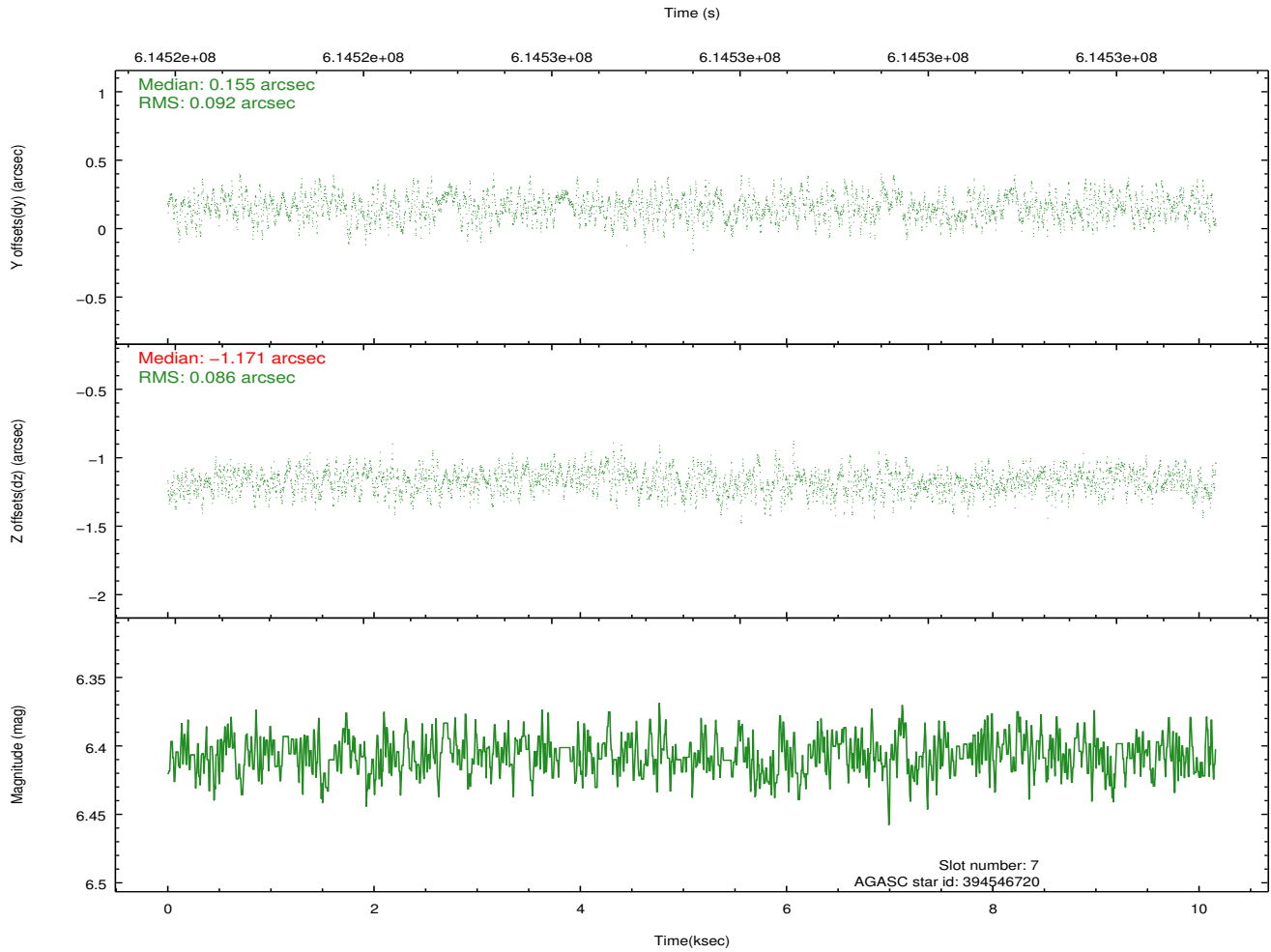
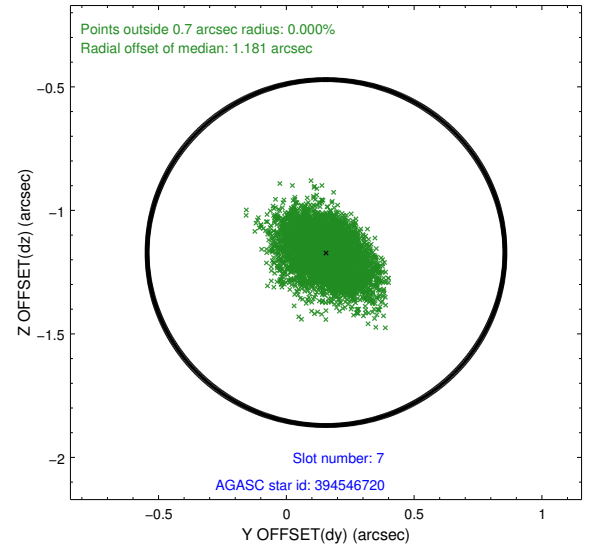
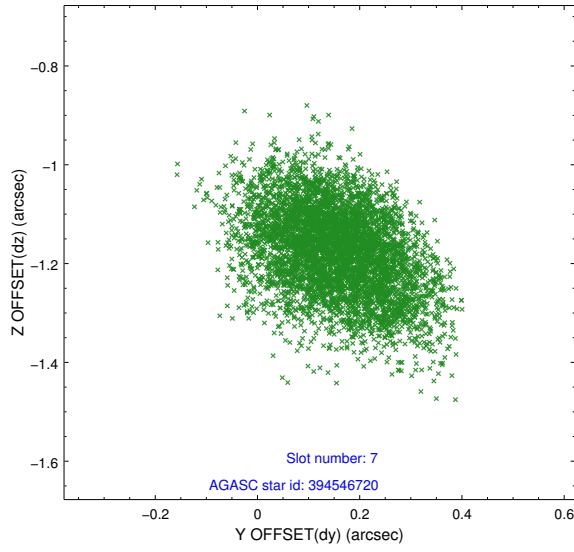
2.4.3 Slot 5



2.4.4 Slot 6

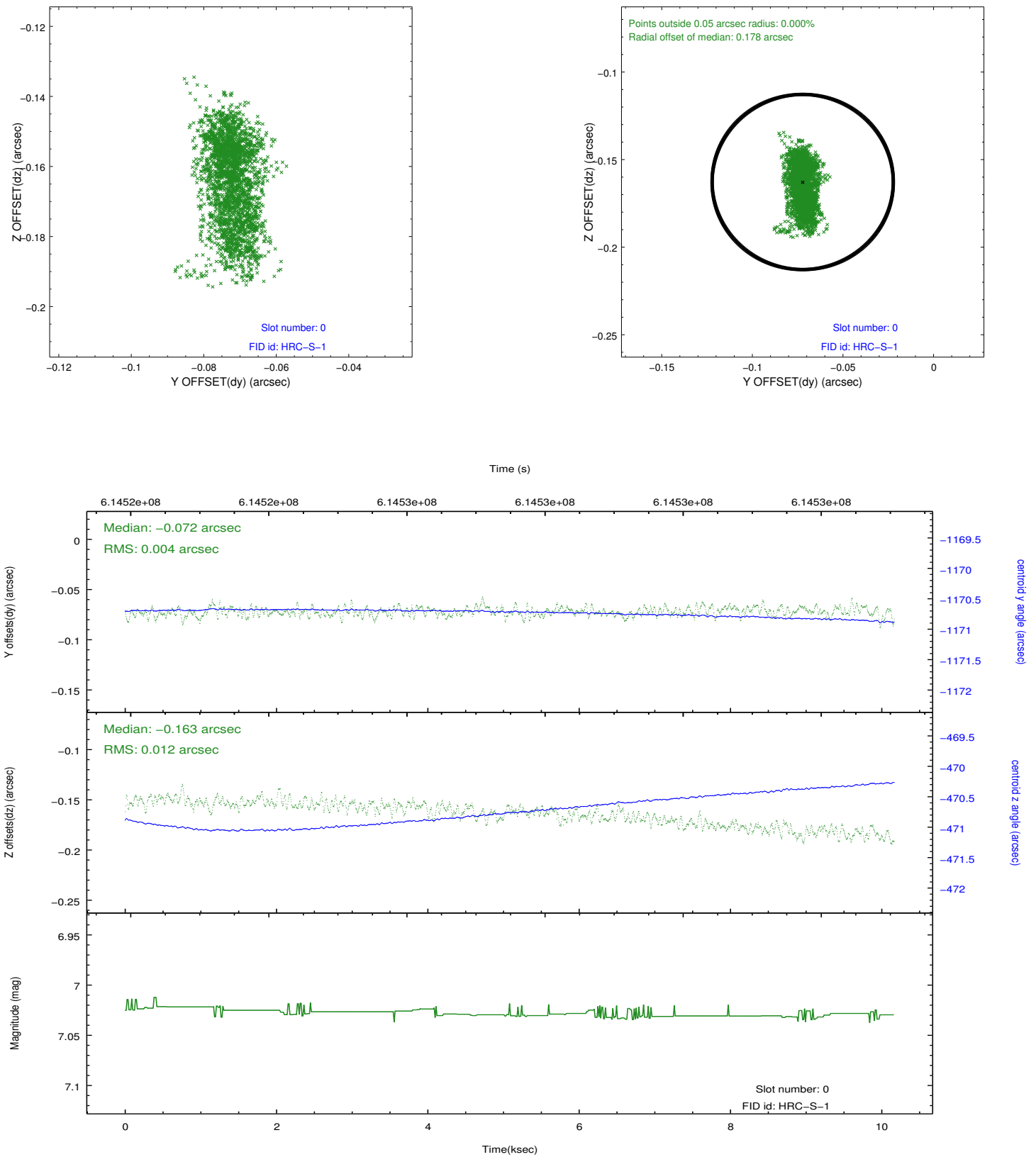


2.4.5 Slot 7

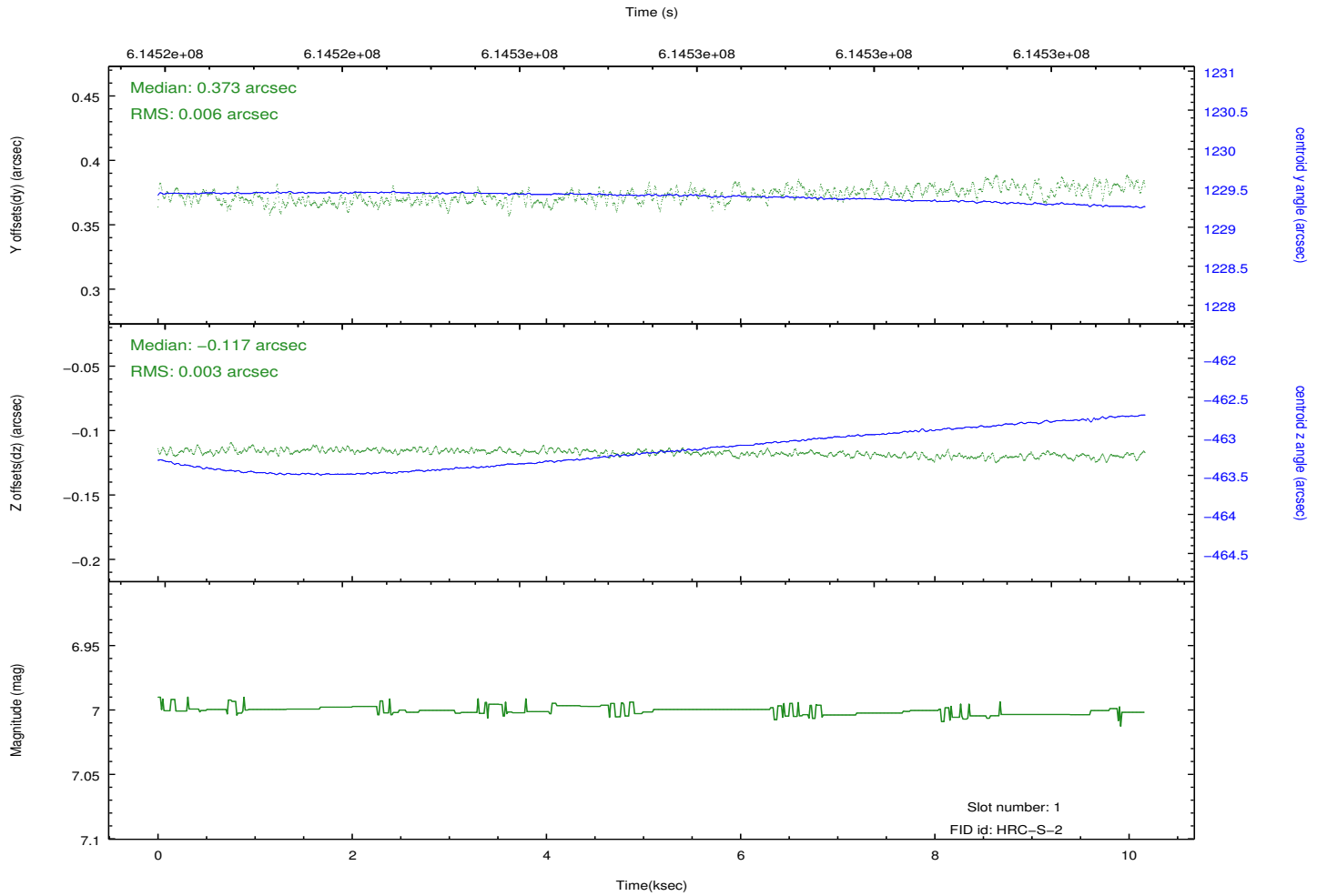
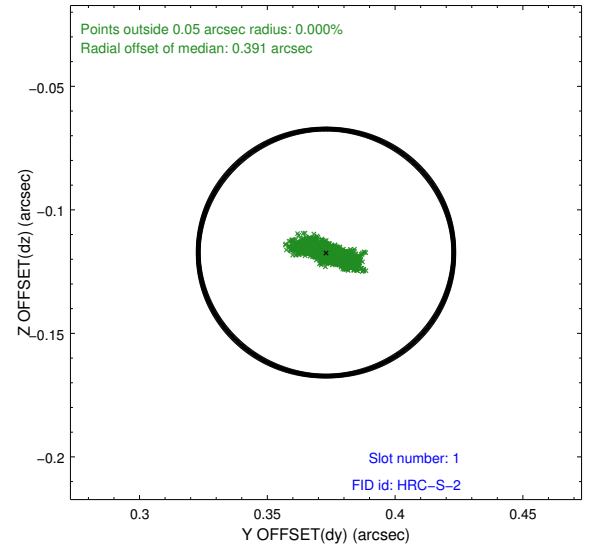
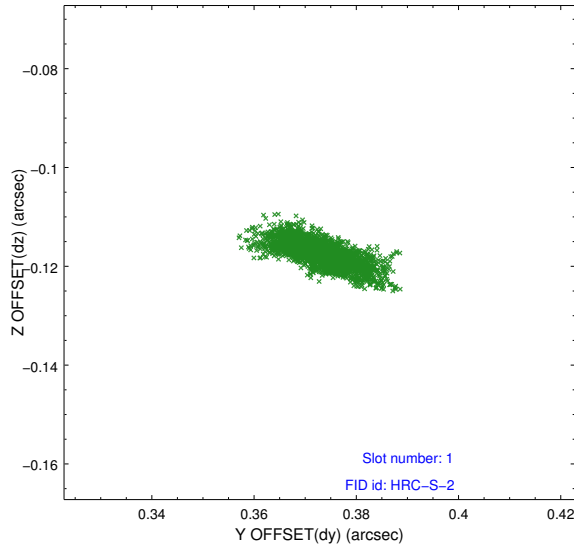


2.5 FID Slots

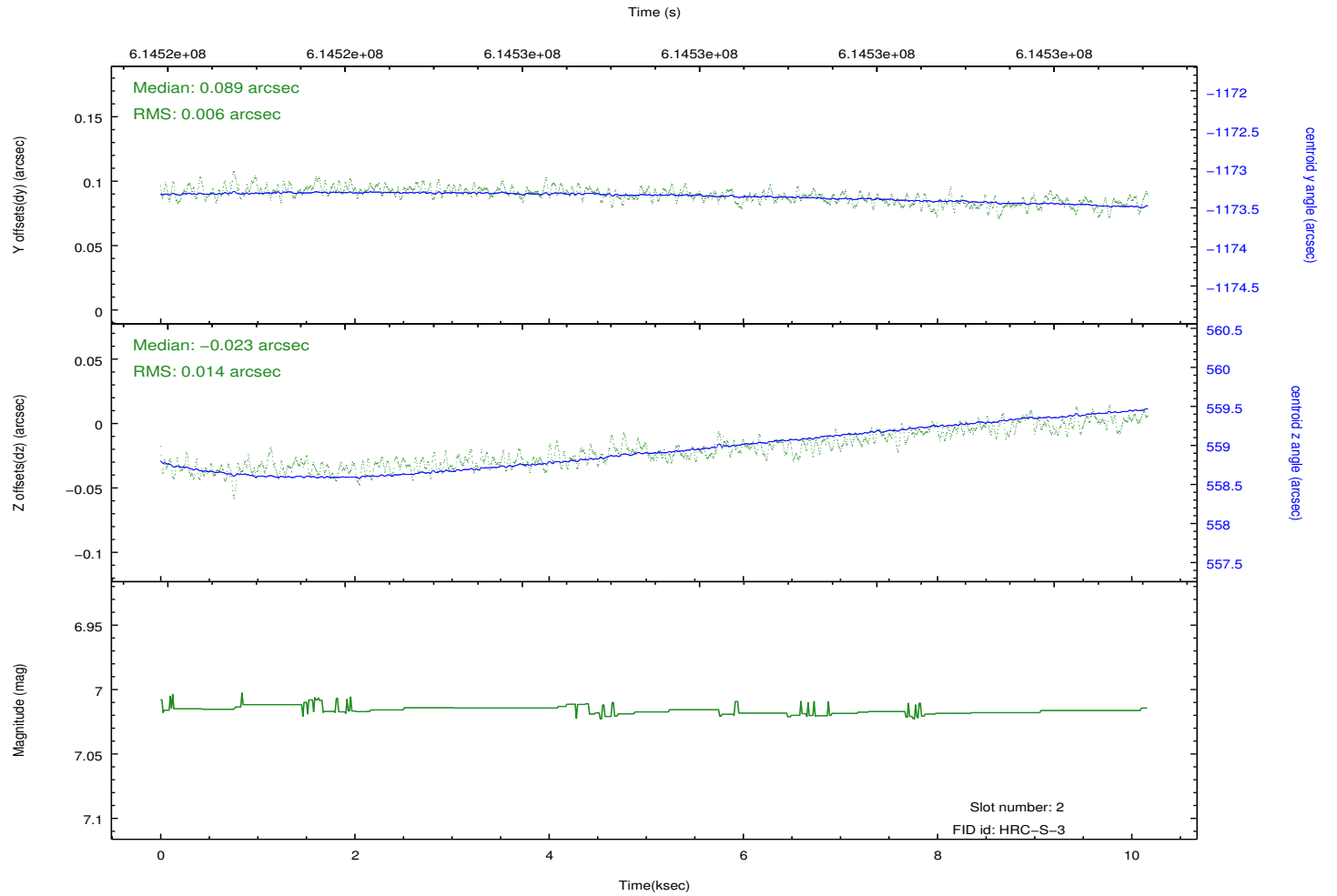
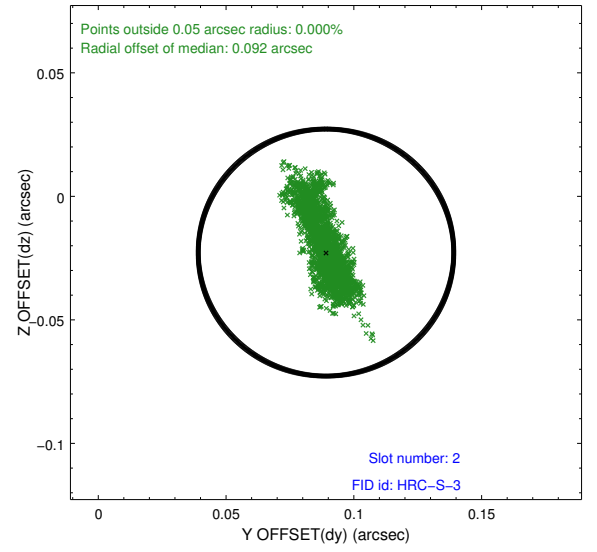
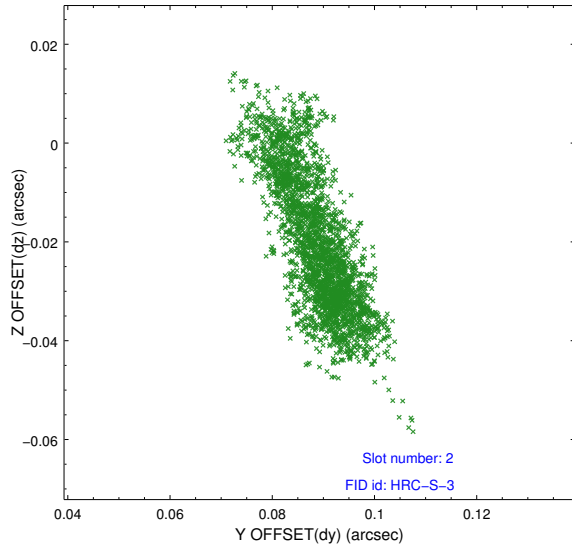
2.5.1 Slot 0



2.5.2 Slot 1

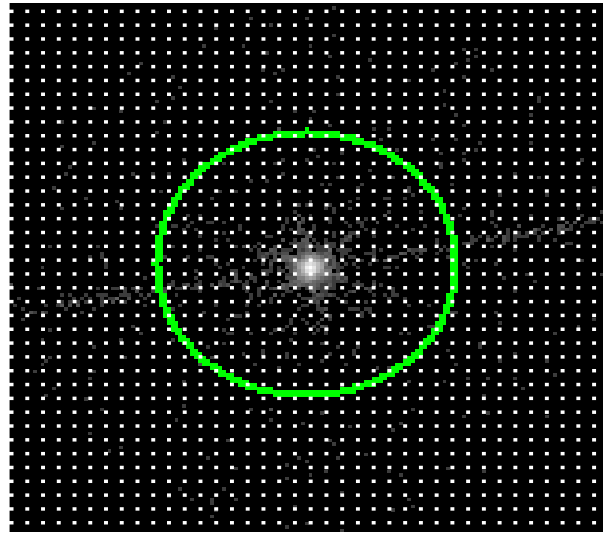


2.5.3 Slot 2

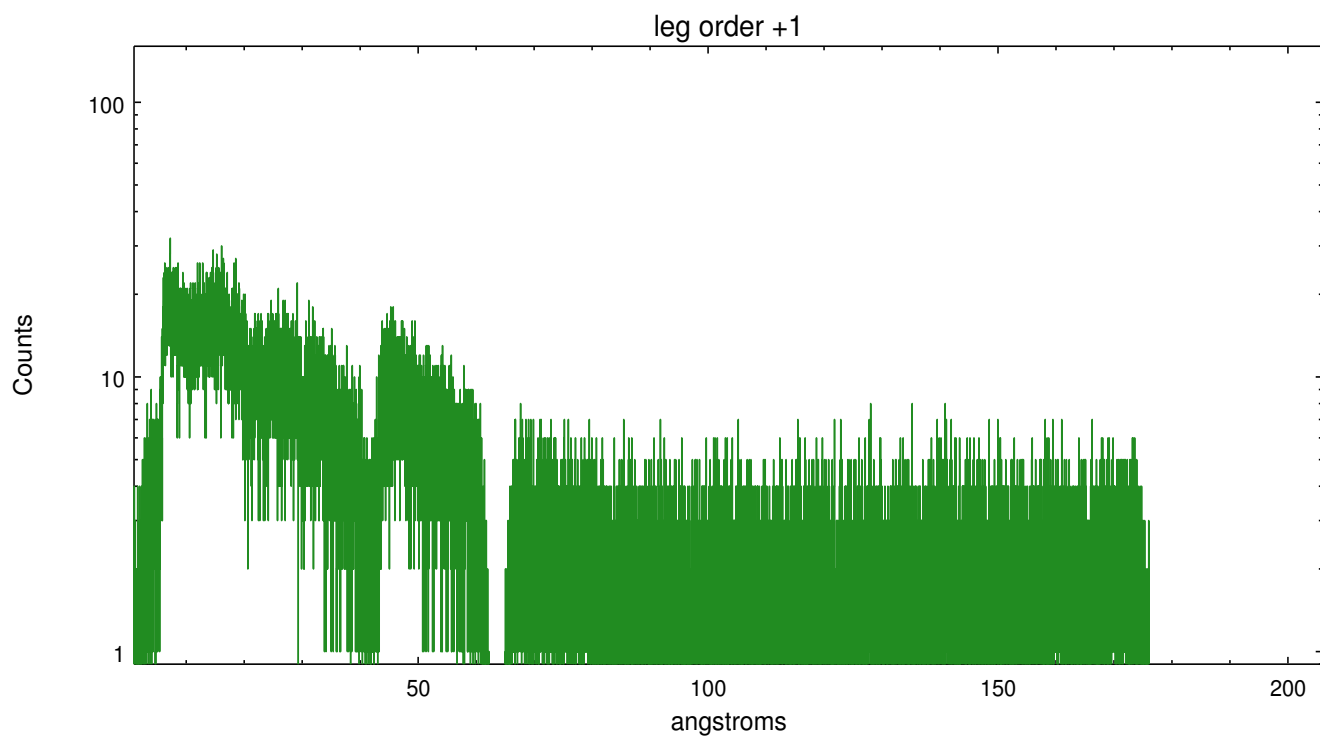
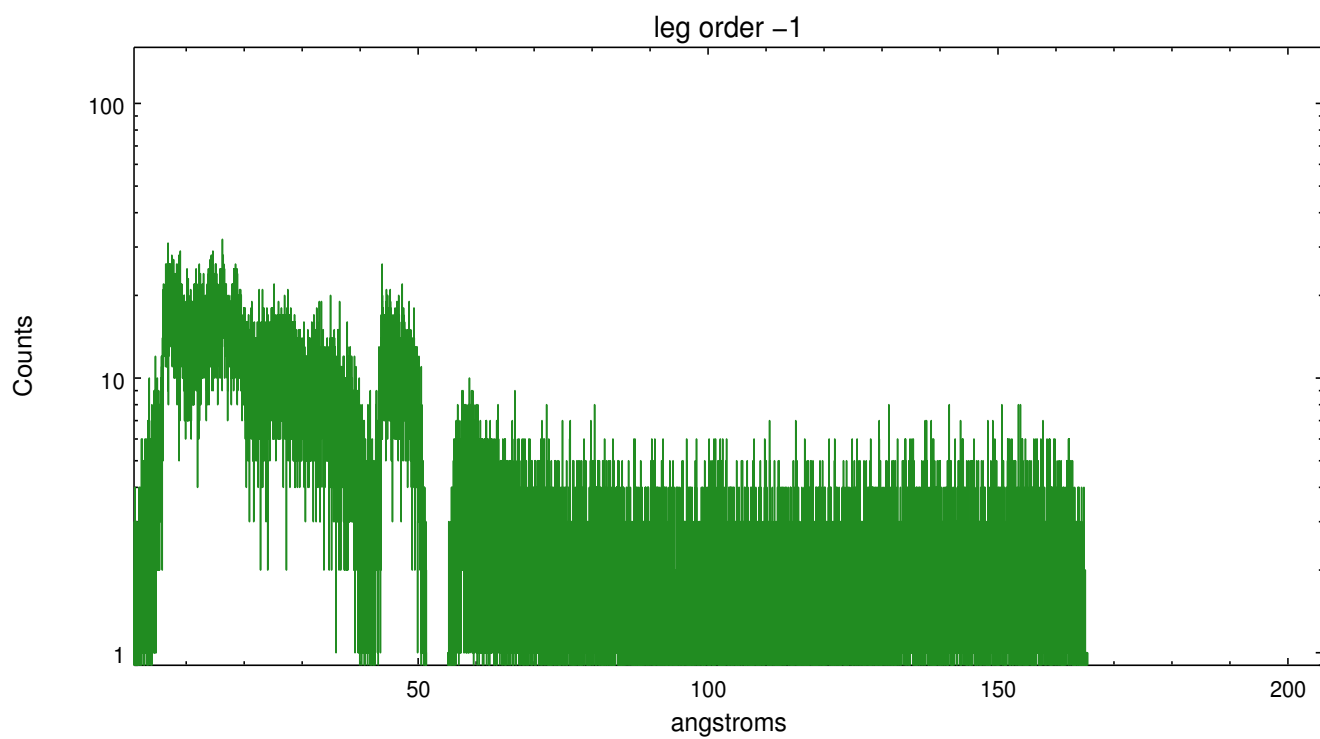


3 Gratings

3.1 LETG Arm



LETG Zero Order



A Summary

A.1 Status

V&V Scientist	David Huenemoerder
V&V Date (YYYY-MM-DD)	2017.06.23
V&V Edition	1
V&V Disposition and Status	OK
V&V Charge Time	10.14955059123

A.2 Comments