

V&V Reference Report

L2 ASCDS Version : 10.4.3.1

Observation 18437 - L2 Version 1
Chandra X-Ray Center

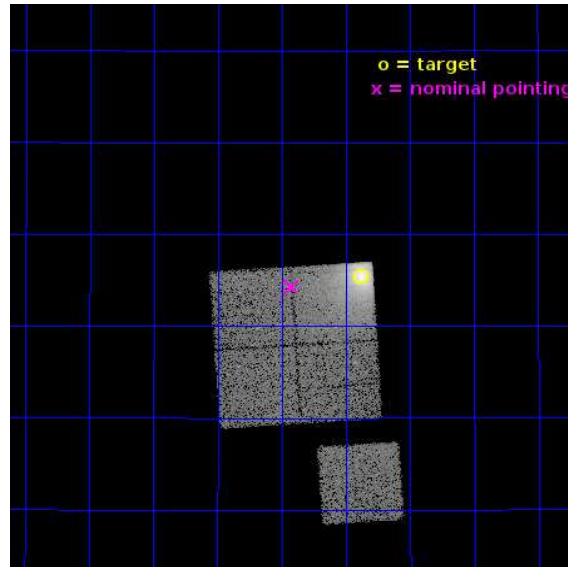
L2 Processing Date : Apr 17 2016

Contents

1	Front	2
2	OBI	3
2.1	OBI	3
2.1.1	Images	3
2.1.2	Bias	3
2.1.3	Parameters	4
2.1.4	Events	4
2.2	Compared Parameters	5
2.3	Aspect	6
2.4	Star Slots	9
2.4.1	Slot 3	9
2.4.2	Slot 4	10
2.4.3	Slot 5	11
2.4.4	Slot 6	12
2.4.5	Slot 7	13
2.5	FID Slots	14
2.5.1	Slot 0	14
2.5.2	Slot 1	15
2.5.3	Slot 2	16
A	Summary	17
A.1	Status	17
A.2	Comments	17

1 Front

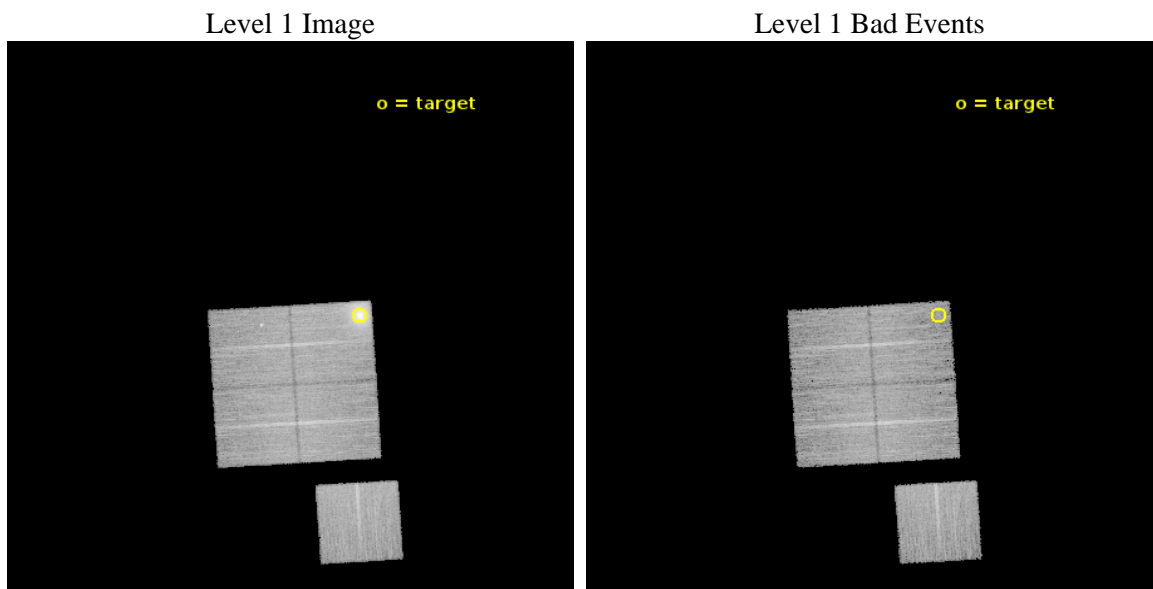
seq_num	890130	Sequence number
obs_id	18437	Observation id
title	AO-17 Calibration Observations of A1795	Proposal title
observer	Dr. CXC Calibration	Principal investigator
object	A1795	Source name
dtcycle	0	
cycle	P	events from which exps? Prim/Second/Both
ra_targ	207.219583	Observer's specified target RA [deg]
dec_targ	26.590833	Observer's specified target Dec [deg]
ra_nom	207.35626771951	Nominal RA [deg]
dec_nom	26.571820373389	Nominal Dec [deg]
roll_nom	176.43930843651	Nominal Roll [deg]
revision	1	Processing version of data
ontime	15074.213982463	Sum of GTIs [s]
livetime	14877.258279307	Livetime [s]
ontime0	15074.213982463	Sum of GTIs [s]
ontime1	15074.255022407	Sum of GTIs [s]
ontime2	15074.296062469	Sum of GTIs [s]
ontime3	15074.337102413	Sum of GTIs [s]
ontime6	15074.1729424	Sum of GTIs [s]
l2events	89962	Number of level 2 events



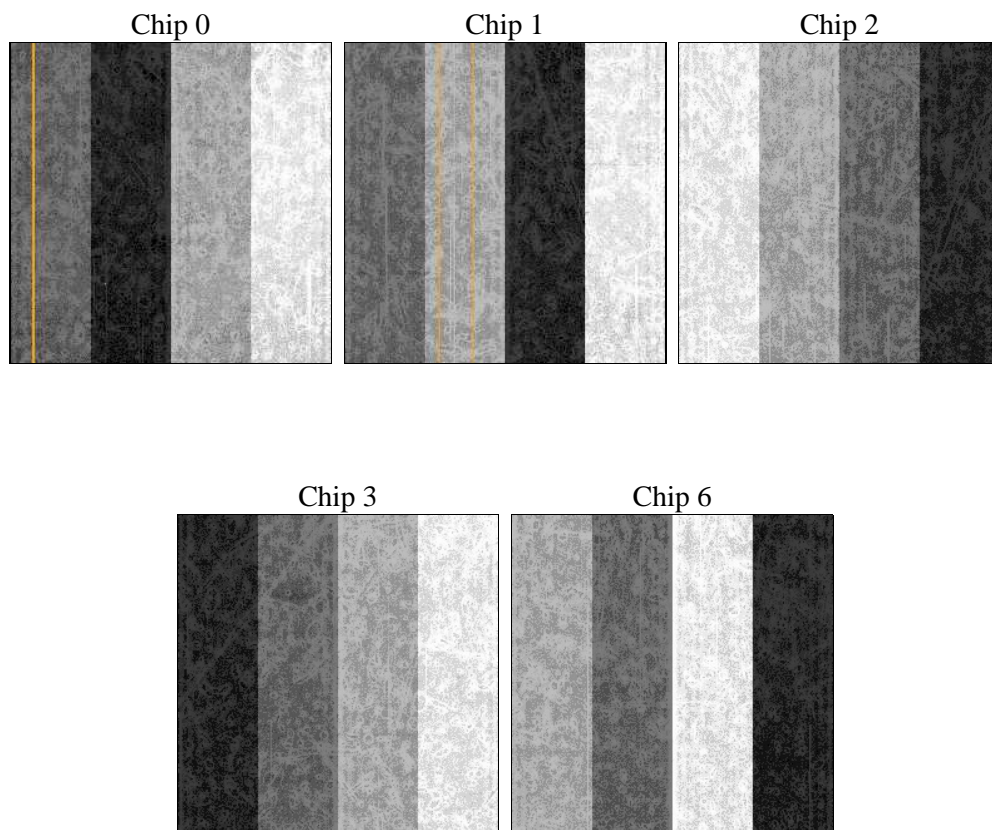
2 OBI

2.1 OBI

2.1.1 Images



2.1.2 Bias



2.1.3 Parameters

obi_num	0	Obi number	sched_exp_time	15000.000000	[s] Scheduled observation exposure time
ascdsver	10.4.3.1	Processing system revision	ontime	15074.213982463	Sum of GTIs [s]
caldbver	4.7.1	 	ontime0	15074.213982463	Sum of GTIs [s]
date	2016-04-17T06:29:06	Date and time of file creation	ontime1	15074.255022407	Sum of GTIs [s]
revision	1	Processing version of data	ontime2	15074.296062469	Sum of GTIs [s]
			ontime3	15074.337102413	Sum of GTIs [s]
			ontime6	15074.1729424	Sum of GTIs [s]
			l1events	499840	Number of level 1 events

2.1.4 Events

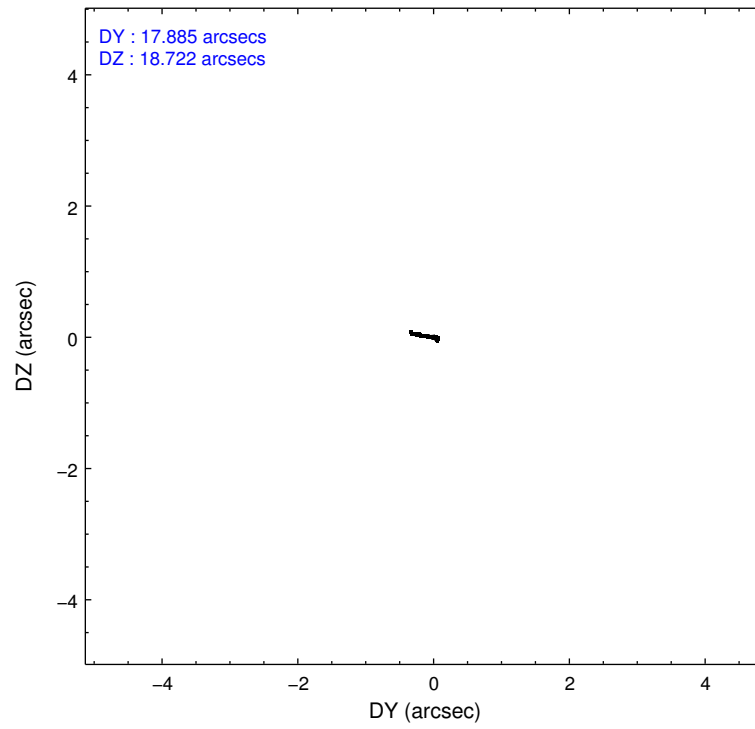
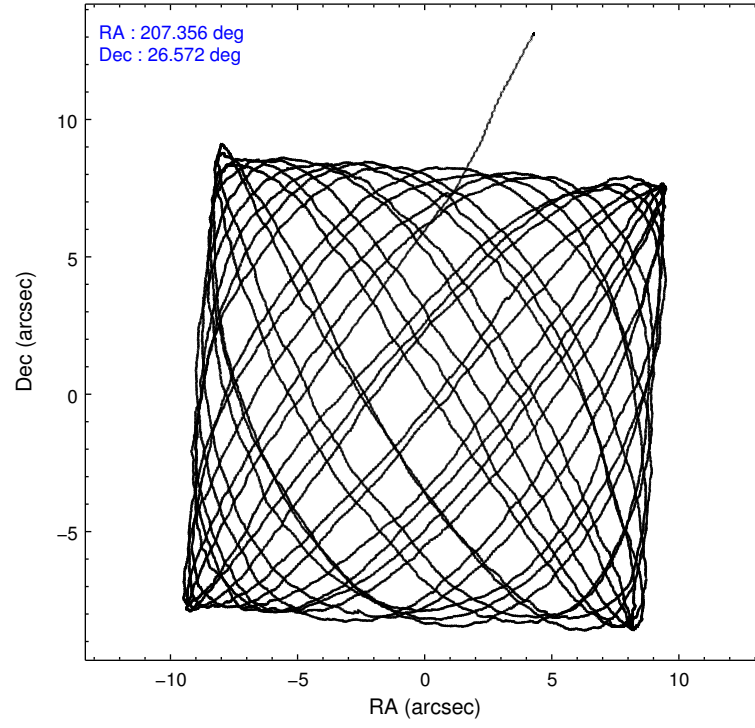
	ccd 0	ccd 1	ccd 2	ccd 3	ccd 6
level 1 events	135085	85815	93881	90432	94627
rejected events	76633	73358	83040	80450	84313
rejected %	56%	85%	88%	88%	89%

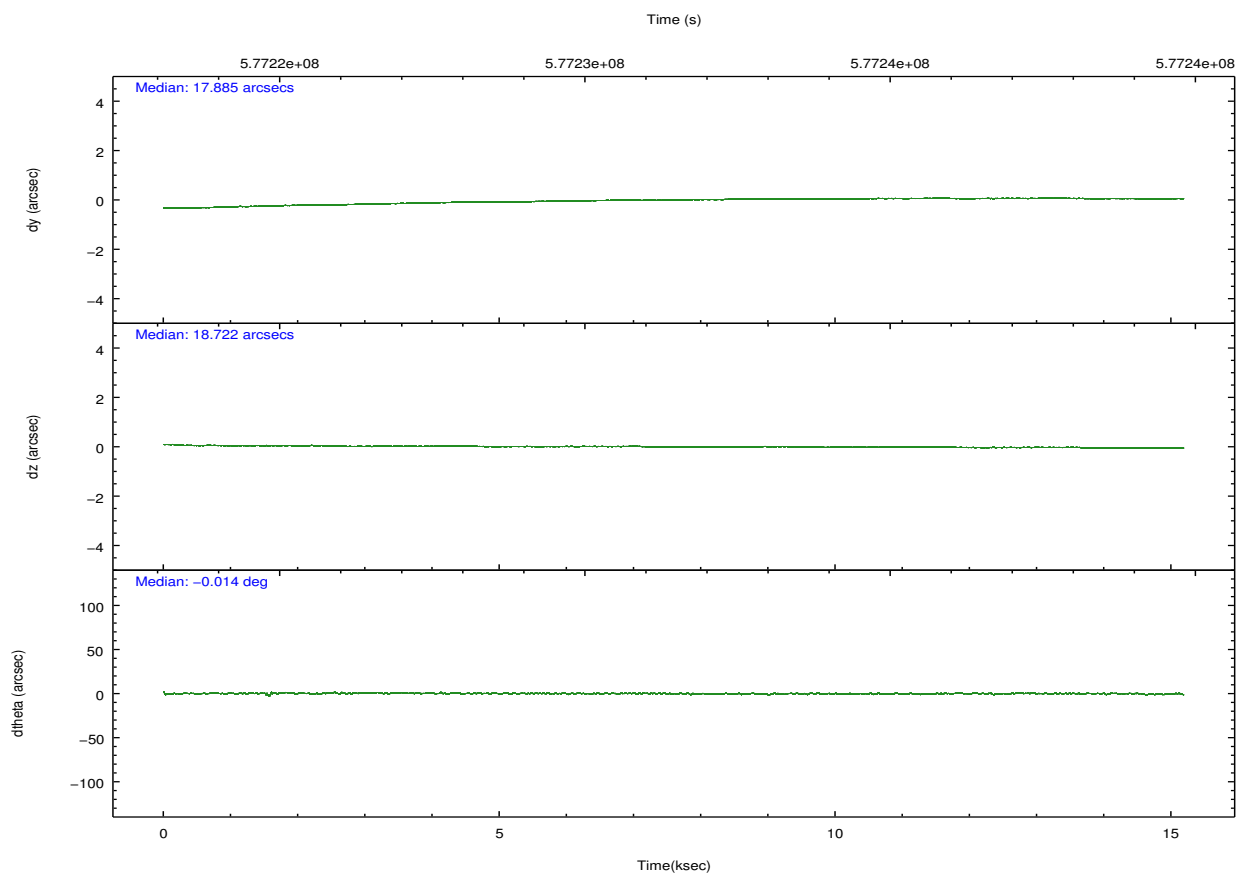
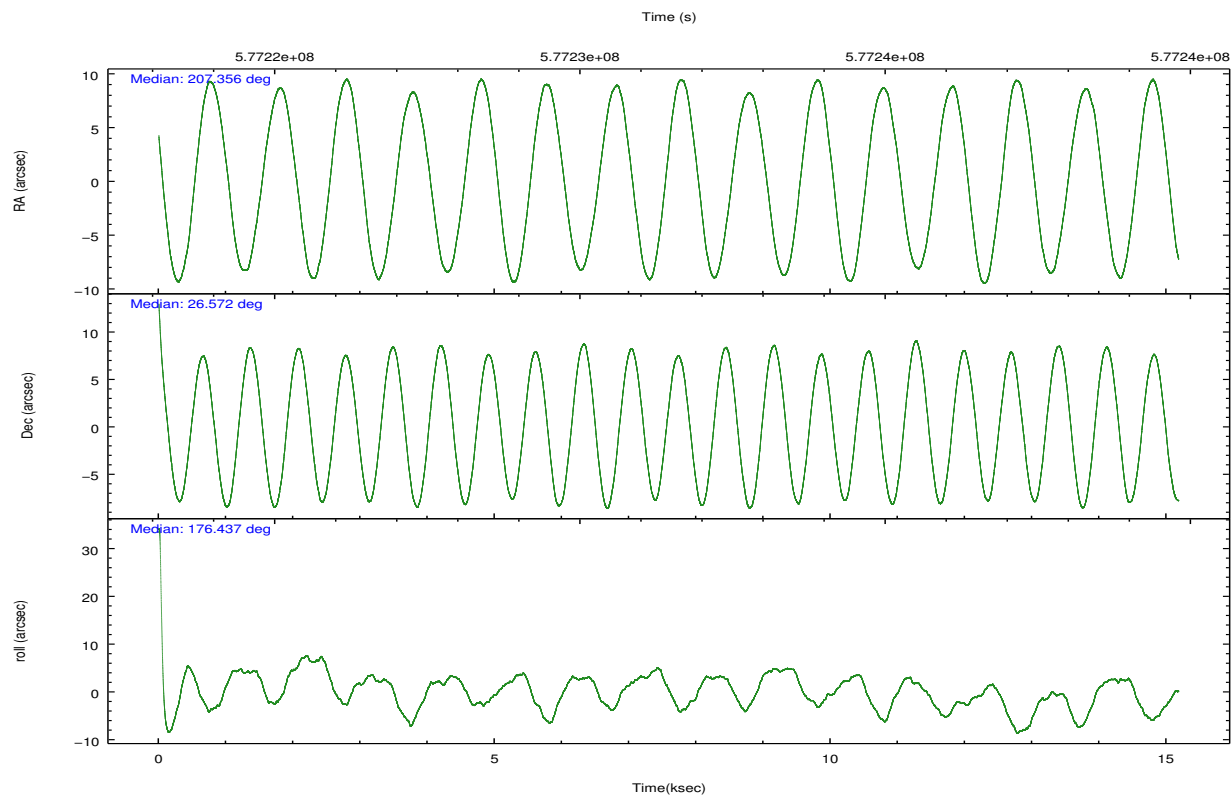
	ccd 0	ccd 1	ccd 2	ccd 3	ccd 6
grade 0 events	41121	4930	4221	3476	3264
	30%	5%	4%	3%	3%
grade 1 events	212	58	55	58	43
	0%	0%	0%	0%	0%
grade 2 events	8047	2694	2552	2219	2427
	5%	3%	2%	2%	2%
grade 3 events	2761	1150	984	1077	1038
	2%	1%	1%	1%	1%
grade 4 events	2820	1099	1099	1077	1072
	2%	1%	1%	1%	1%
grade 5 events	4096	4177	3667	4435	4490
	3%	4%	3%	4%	4%
grade 6 events	3724	2590	1990	2138	2520
	2%	3%	2%	2%	2%
grade 7 events	72304	69117	79313	75952	79773
	53%	80%	84%	83%	84%

2.2 Compared Parameters

Parameter	Planned	Actual	Parameter	Planned	Actual
Instrument	ACIS	ACIS	Obspar format version number	7	7
Detector	ACIS-01236	ACIS-01236	Obspar file type	PREDICTED	ACTUAL
Grating	NONE	NONE	Obspar update status	NONE	UPDATED
Data mode	VFAINT	VFAINT	Number of optional ACIS chips dropped	0	0
Observation mode	POINTING	POINTING	On-chip summing requested	N	N
[deg] Pointing RA	207.383869	207.3562677195124	Subarray requested	NONE	NONE
[deg] Pointing Dec	26.584215	26.57182037338927	Alternating exposures requested	N	N
[deg] Pointing Roll	176.218236	176.4393084365128	[s] Primary exposure time	0.000000	3.1
[s] Window start time (MET)	575856068.184000	575856068.184000			
[s] Window stop time (MET)	578361668.184000	578361668.184000			
[mm] SIM focus pos	-0.782348	-0.7809083437167272			
[mm] SIM defocus	0	0.001439871863259334			
[mm] SIM translation stage pos	-254.359963	-254.3657361129205			
[mm] SIM translation stage offset	20.7675	20.77328310999084			
[s] Observation start time (MET)	577224062.184000	577222333.56344			
Observation start date	2016-04-16T19:59:54	2016-04-16T19:32:13			
[s] Observation end time (MET)	577239062.184000	577239196.35191			
Observation end date	2016-04-17T00:09:54	2016-04-17T00:13:16			
Read mode	TIMED	TIMED			

2.3 Aspect



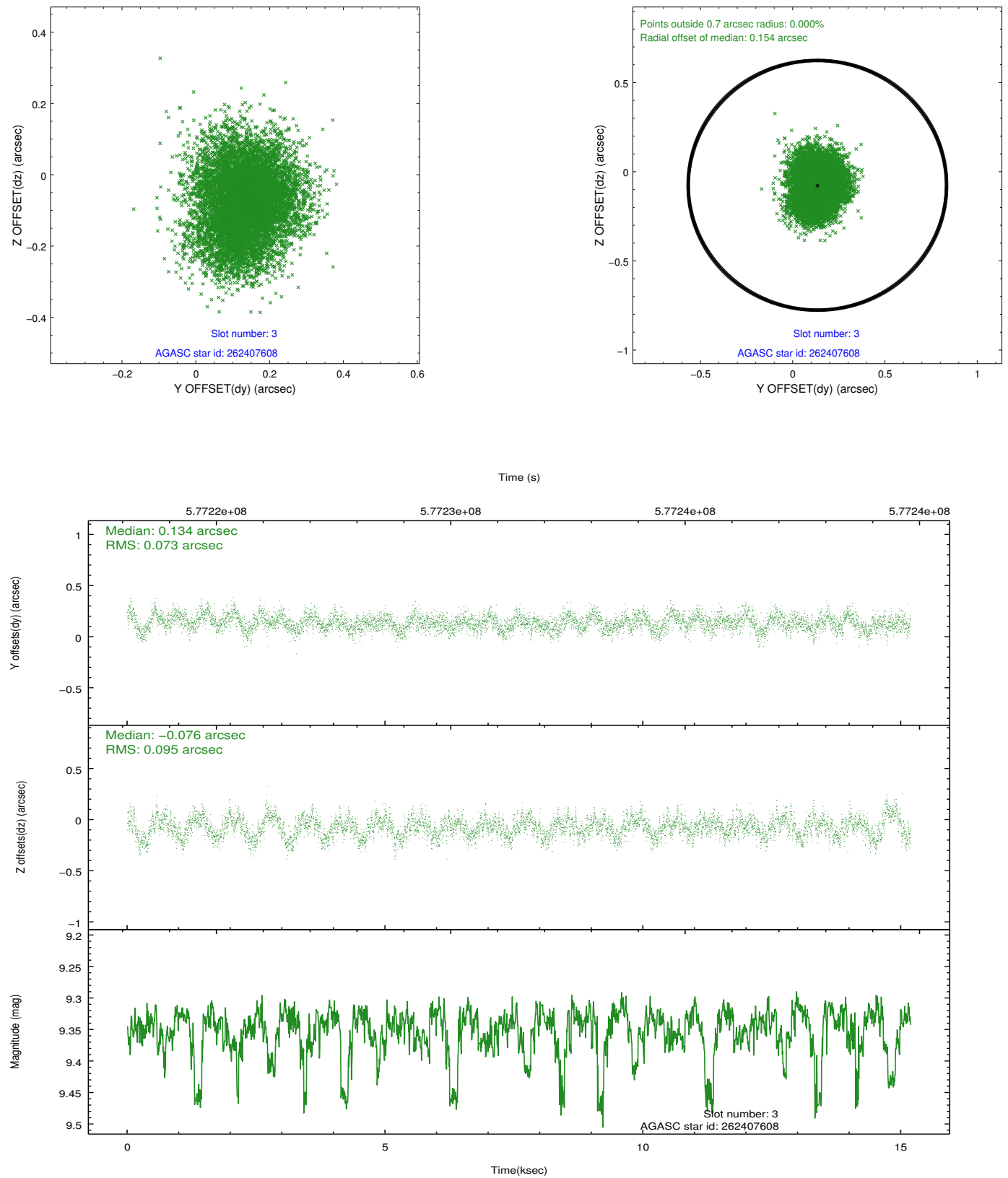


Slot Statistics

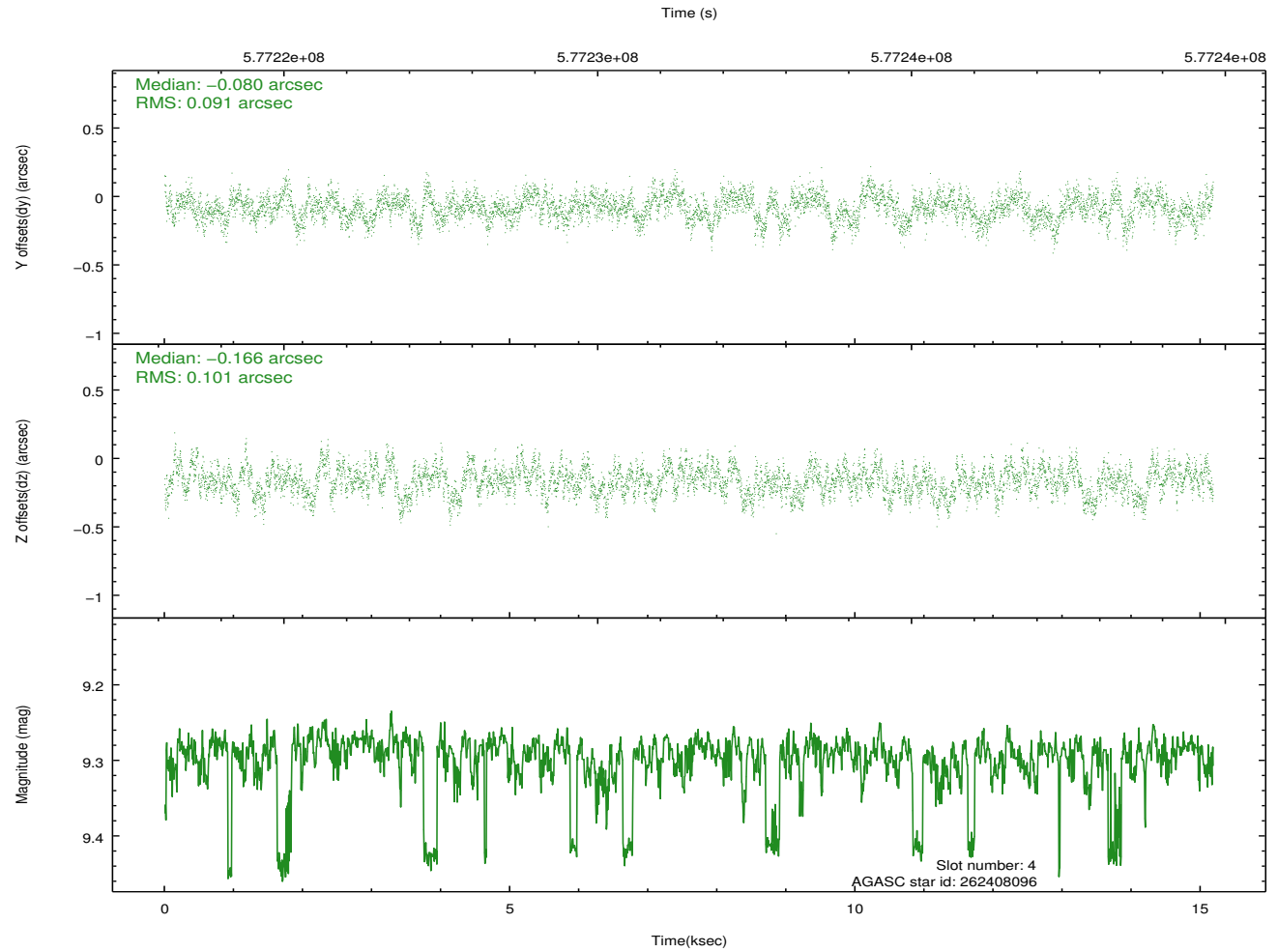
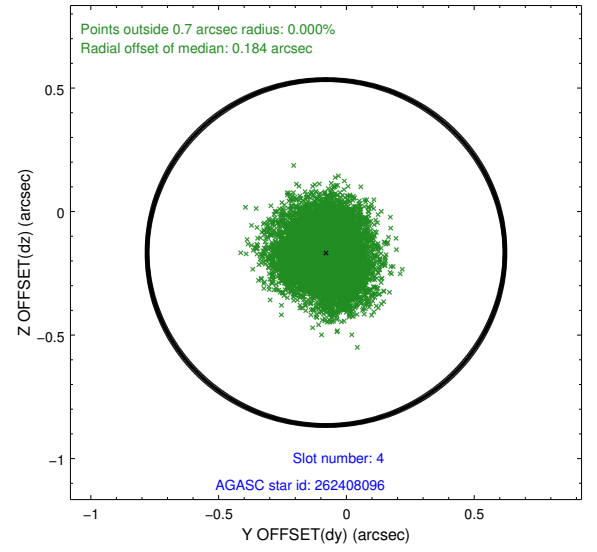
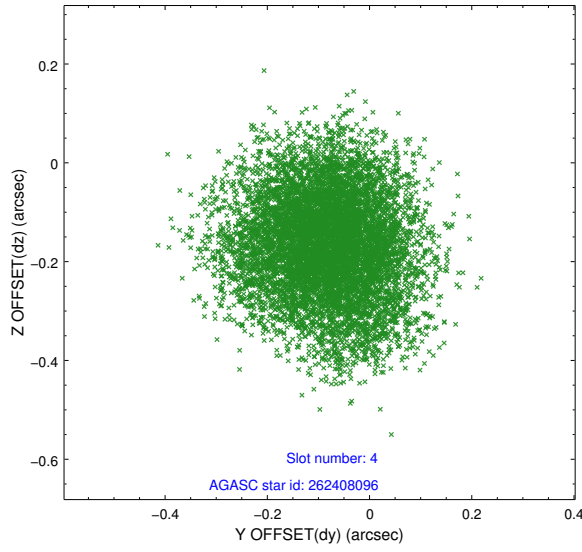
slot	status	used	id	mag	n_pts	med_dy	med_dz	dr1	dr2	ra	dec	mean_y	mean_z
0	FID		ACIS-I-2	7.28	3703	-0.161	-0.569	0.010	0.016	0.000000	0.000000	-771.29	-424.73
1	FID		ACIS-I-4	7.24	3703	0.397	0.238	0.006	0.012	0.000000	0.000000	2142.80	1482.80
2	FID		ACIS-I-5	7.27	3703	-0.336	0.398	0.009	0.014	0.000000	0.000000	-1826.32	1482.38
3	GUIDE	used	262407608	9.35	7398	0.134	-0.076	0.129	0.203	207.378401	26.435507	-17.59	535.64
4	GUIDE	used	262408096	9.29	7394	-0.080	-0.166	0.147	0.233	207.011678	26.515421	1180.84	324.50
5	GUIDE	used	262408512	7.98	7406	0.148	0.235	0.097	0.151	207.800210	27.128796	-1201.00	-2045.88
6	GUIDE	used	262408936	9.66	7391	-0.062	0.007	0.212	0.340	207.154731	26.726554	768.75	-463.13
7	GUIDE	used	262414456	9.24	7395	-0.164	0.000	0.157	0.250	208.043290	26.129682	-2234.29	1487.22

2.4 Star Slots

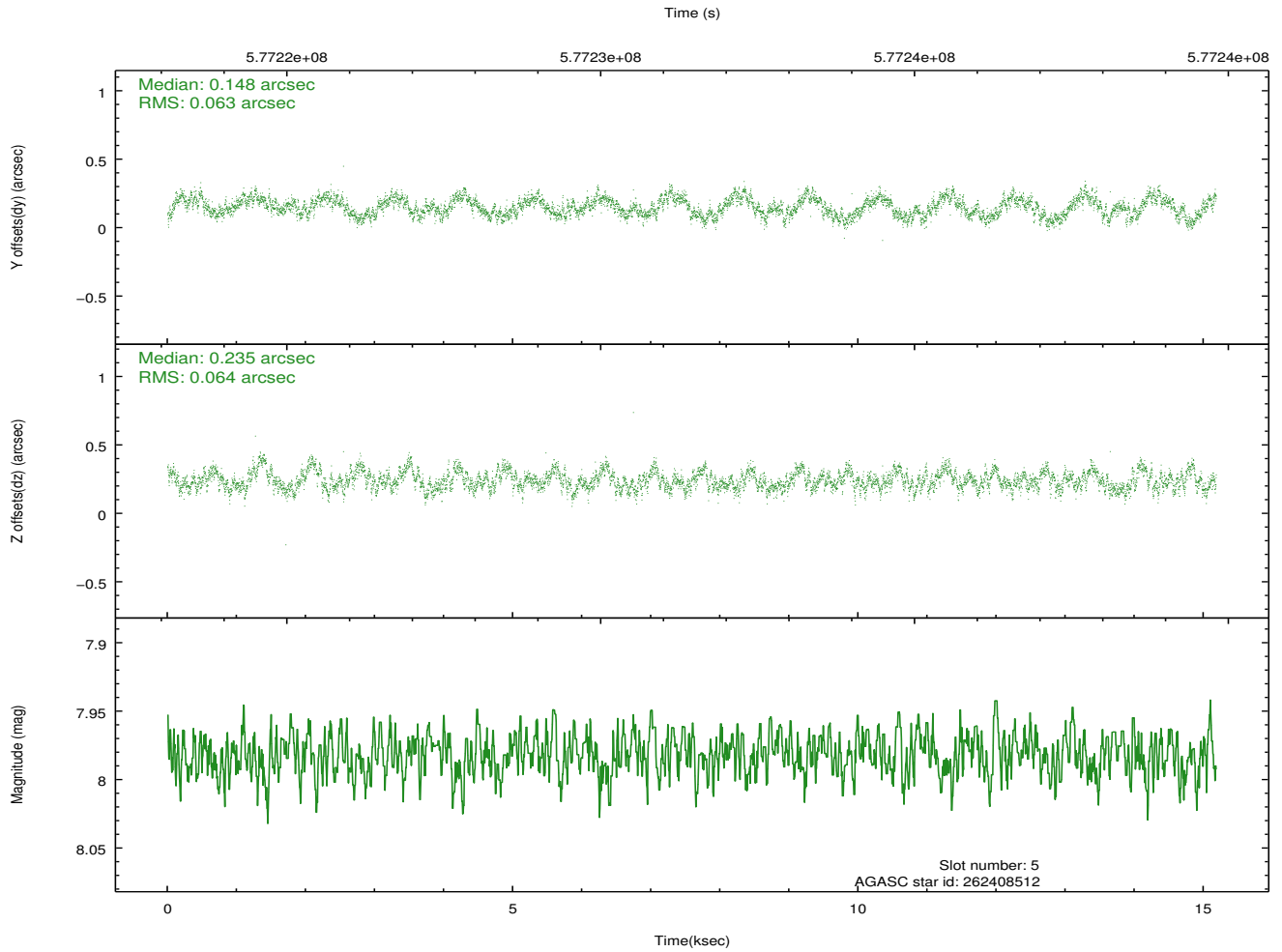
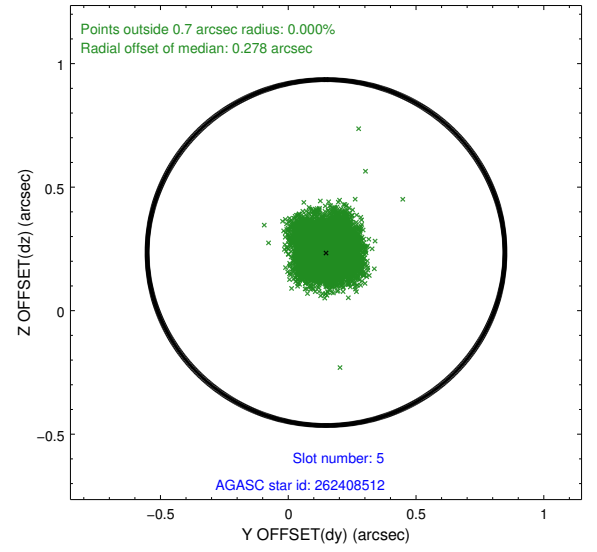
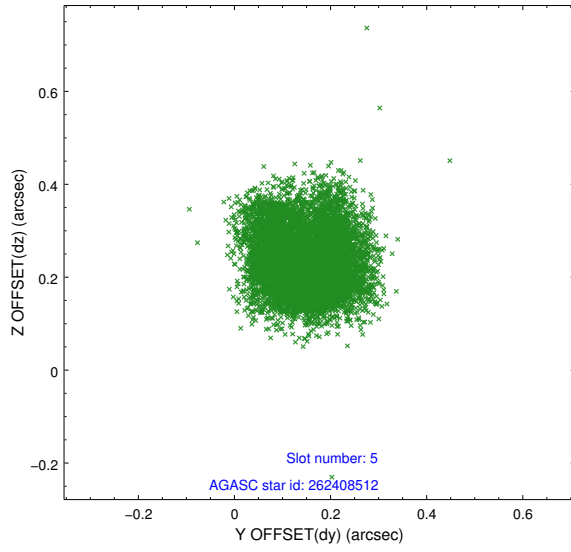
2.4.1 Slot 3



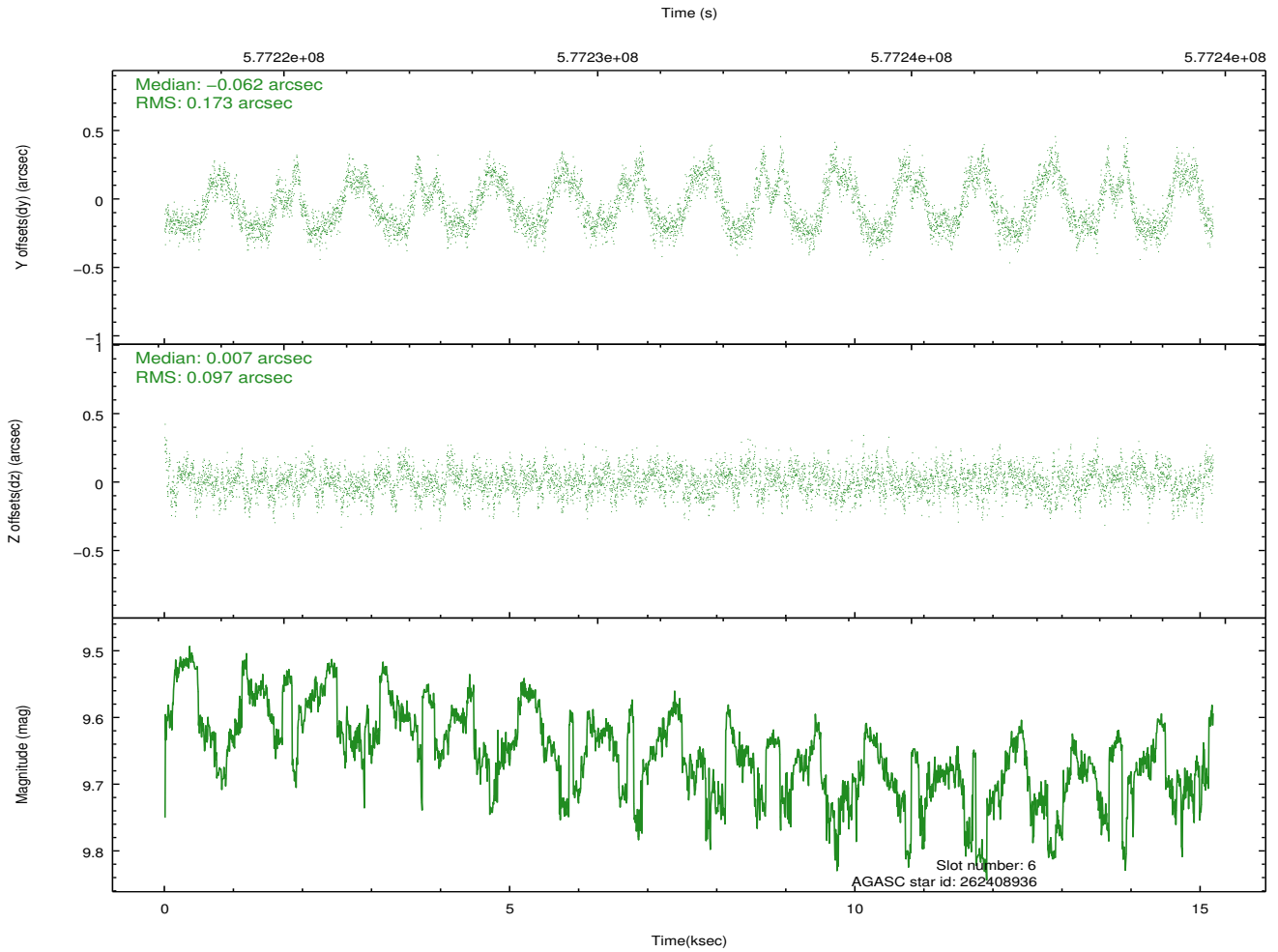
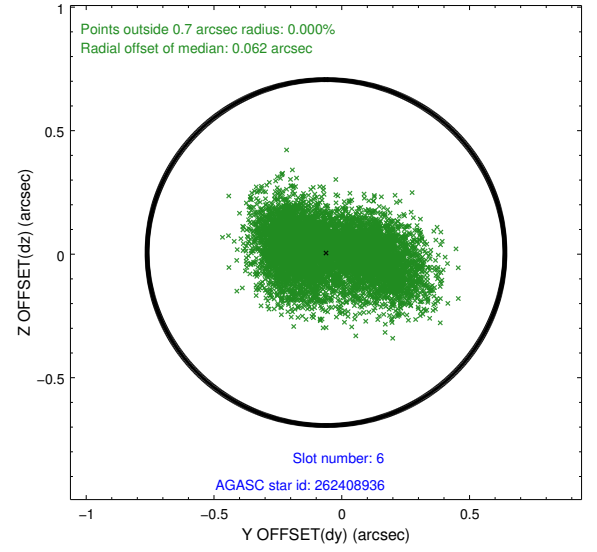
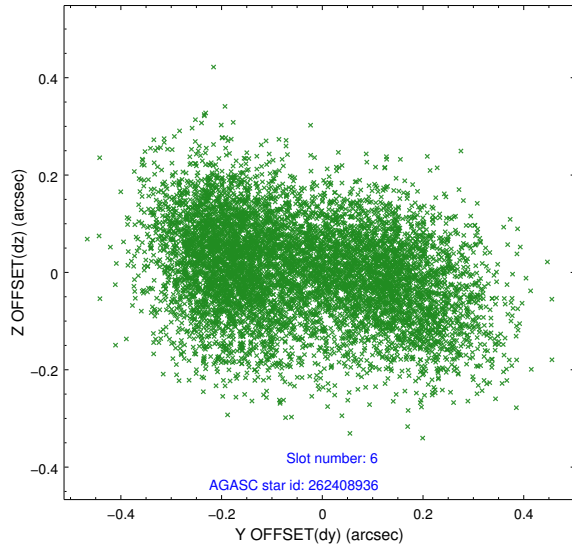
2.4.2 Slot 4



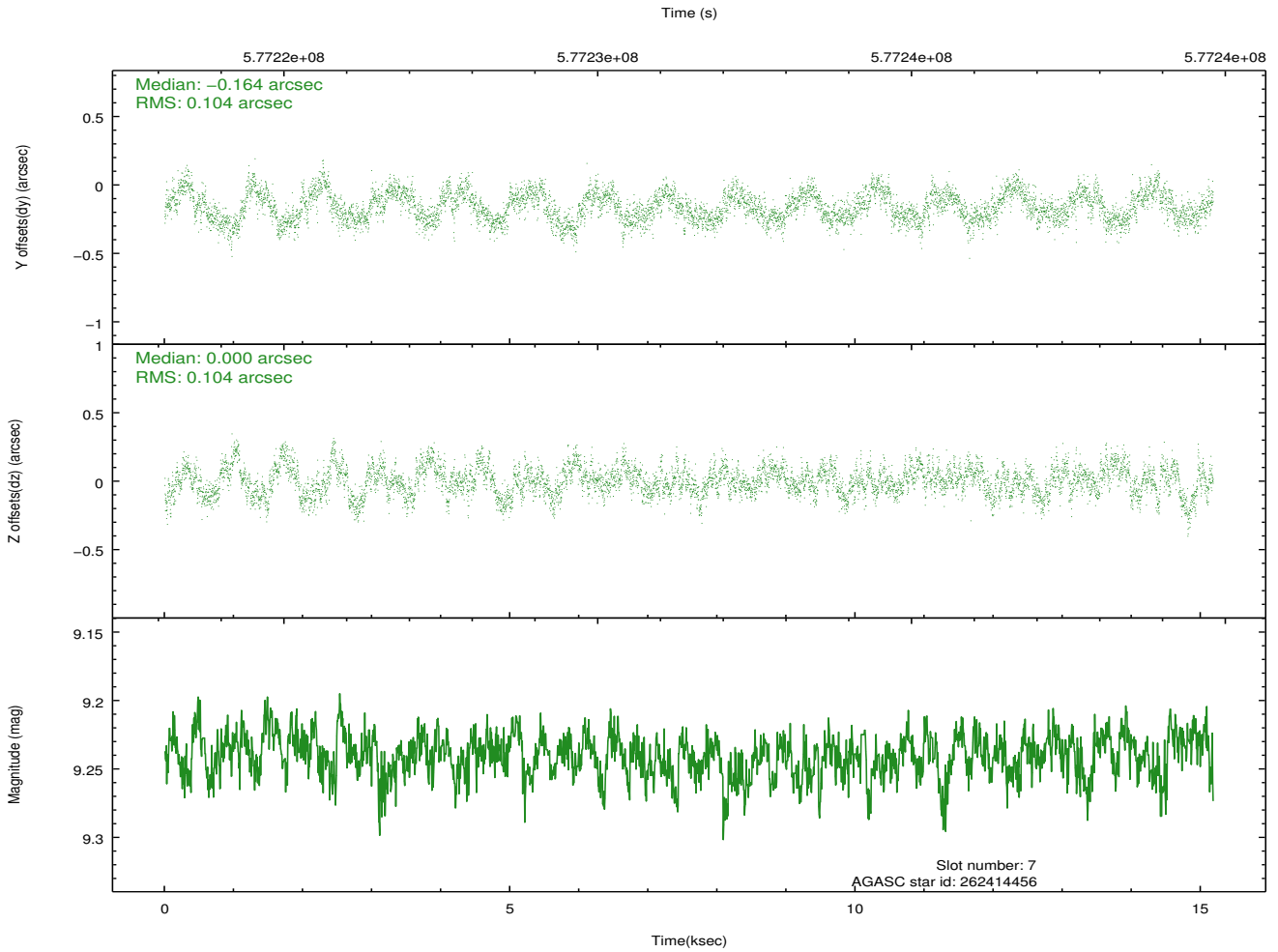
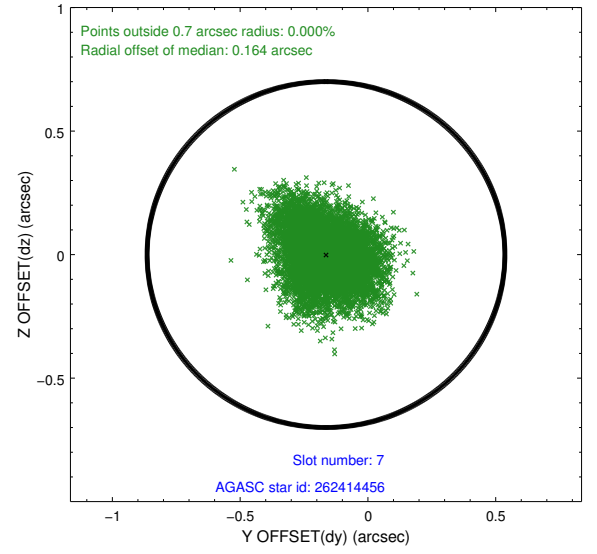
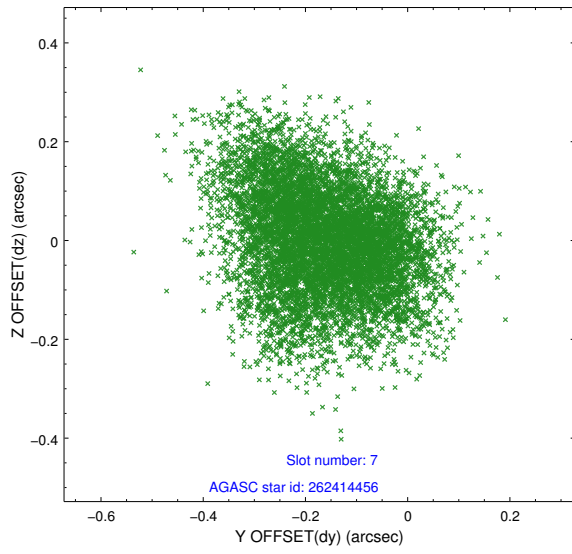
2.4.3 Slot 5



2.4.4 Slot 6

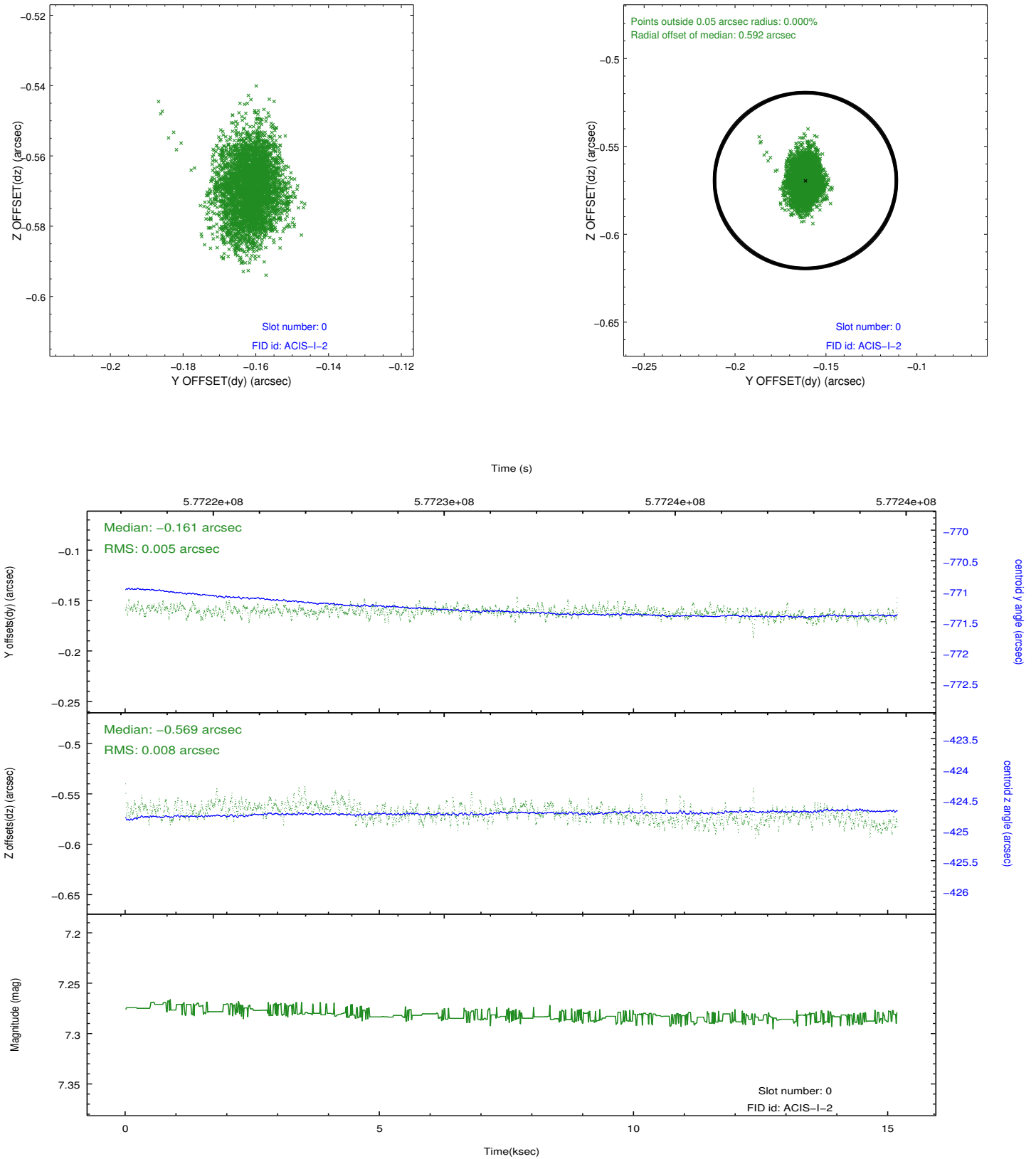


2.4.5 Slot 7

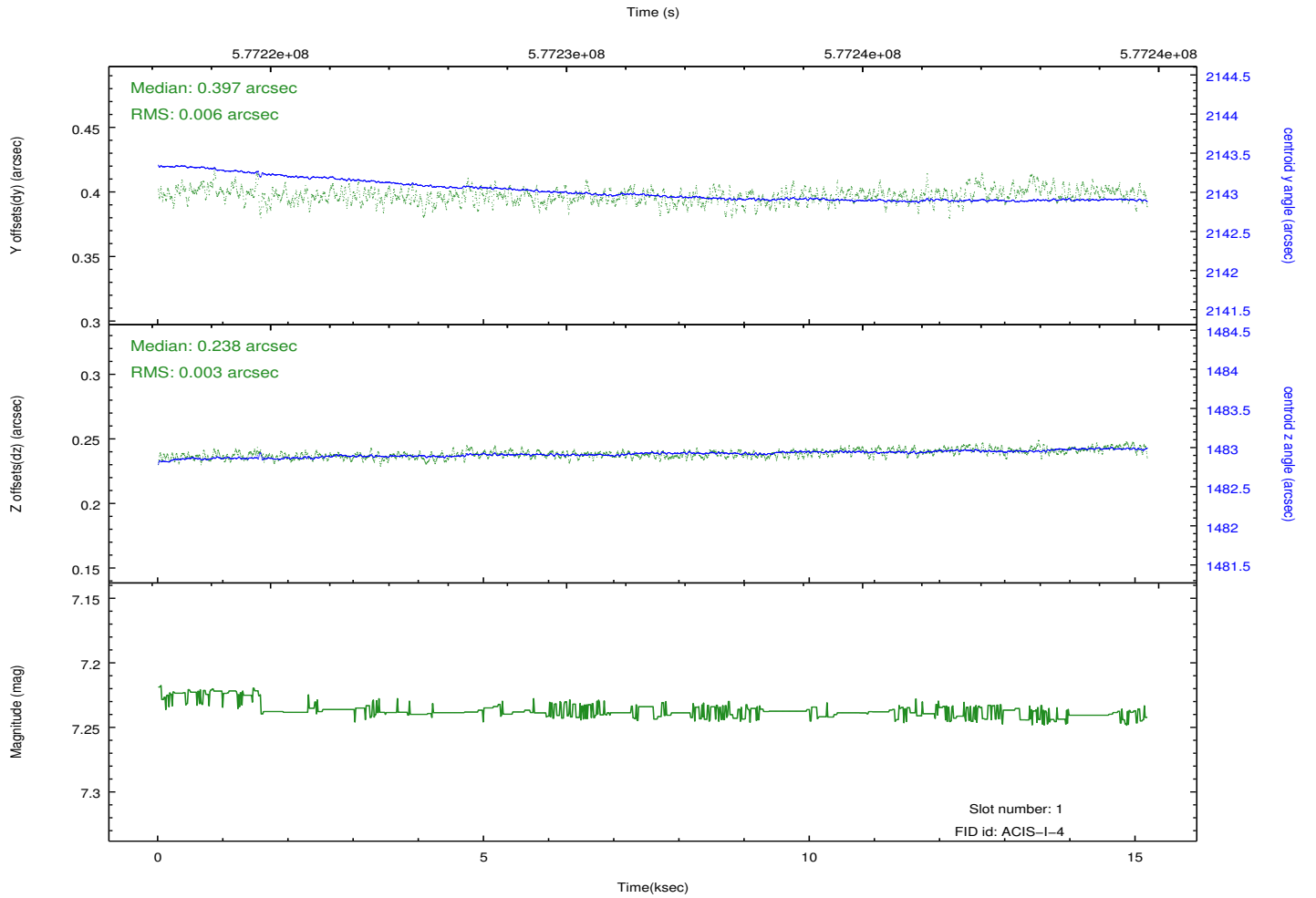
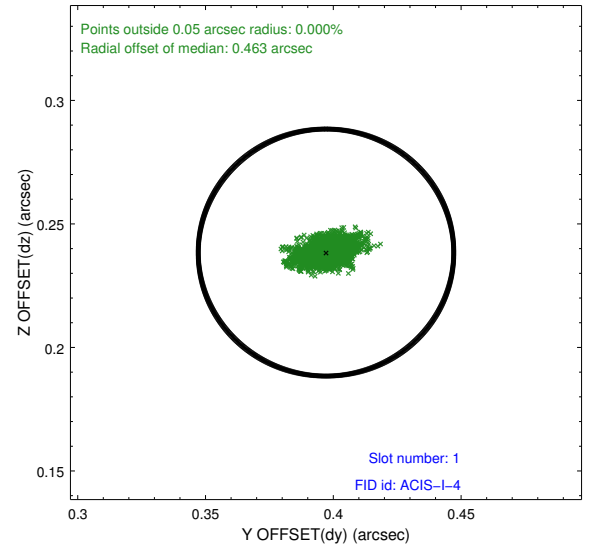
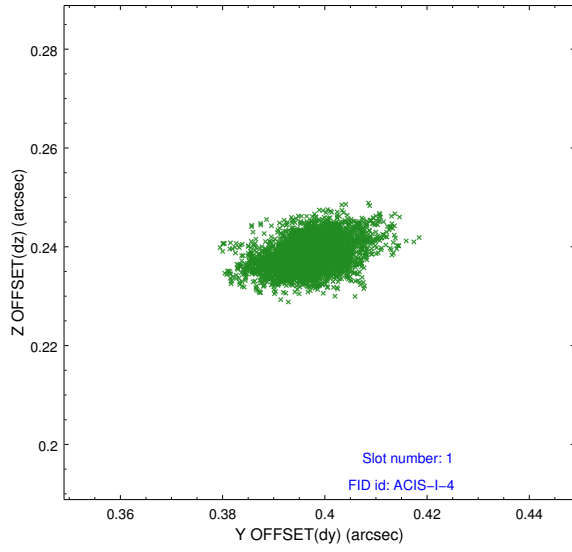


2.5 FID Slots

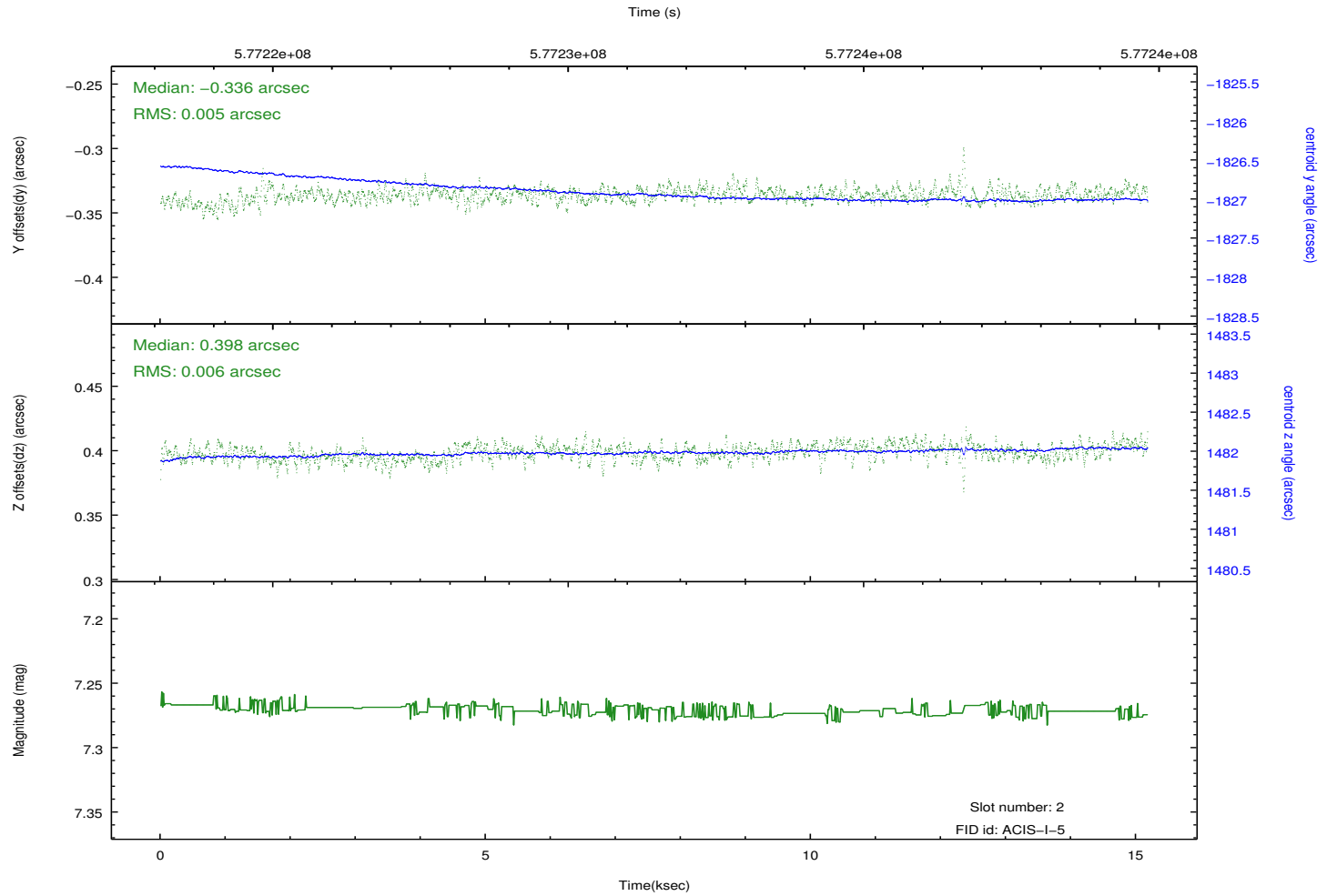
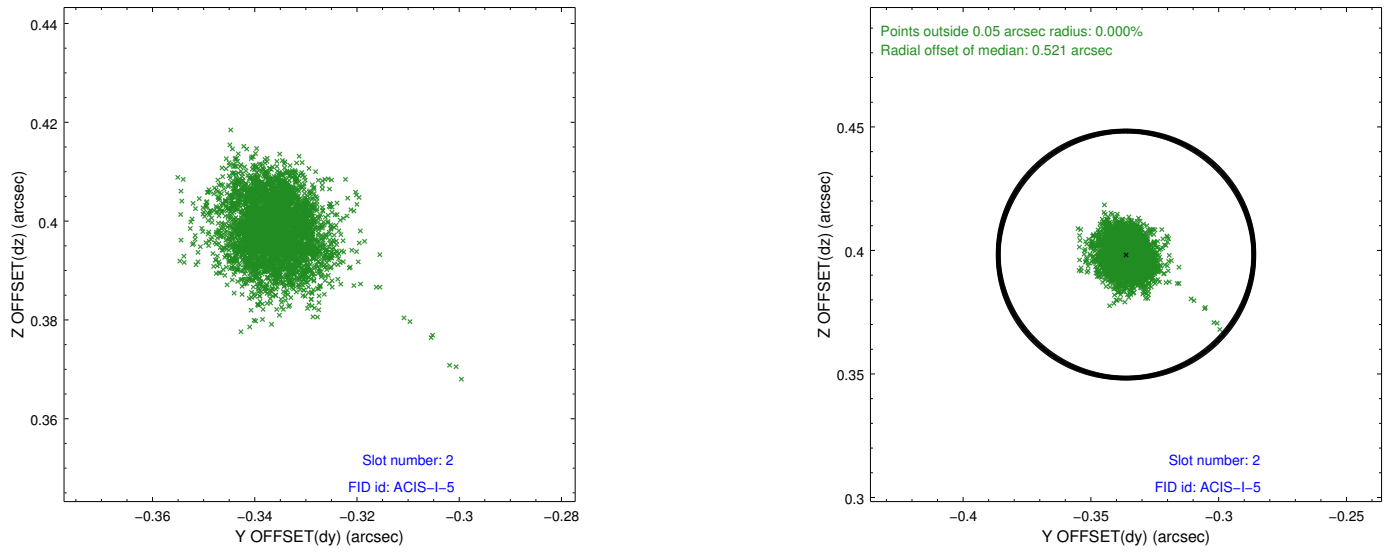
2.5.1 Slot 0



2.5.2 Slot 1



2.5.3 Slot 2



A Summary

A.1 Status

V&V Scientist	Beth Sundheim
V&V Date (YYYY-MM-DD)	2016.04.19
V&V Edition	1
V&V Disposition and Status	OK
V&V Charge Time	15.074213982463

A.2 Comments

Window preference met.

The SIM position is outside the current calibrated range of the fid lights.