

V&V Reference Report

L2 ASCDS Version : 10.4.3.1

Observation 18436 - L2 Version 1
Chandra X-Ray Center

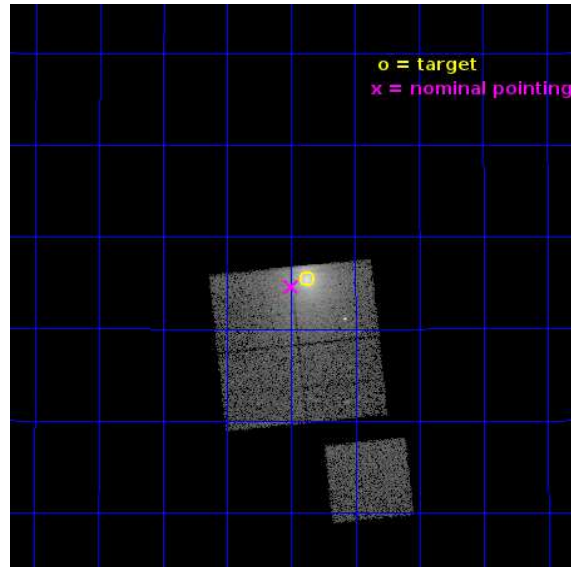
L2 Processing Date : Apr 15 2016

Contents

1	Front	2
2	OBI	3
2.1	OBI	3
2.1.1	Images	3
2.1.2	Bias	3
2.1.3	Parameters	4
2.1.4	Events	4
2.2	Compared Parameters	5
2.3	Aspect	6
2.4	Star Slots	9
2.4.1	Slot 3	9
2.4.2	Slot 4	10
2.4.3	Slot 5	11
2.4.4	Slot 6	12
2.4.5	Slot 7	13
2.5	FID Slots	14
2.5.1	Slot 0	14
2.5.2	Slot 1	15
2.5.3	Slot 2	16
A	Summary	17
A.1	Status	17
A.2	Comments	17

1 Front

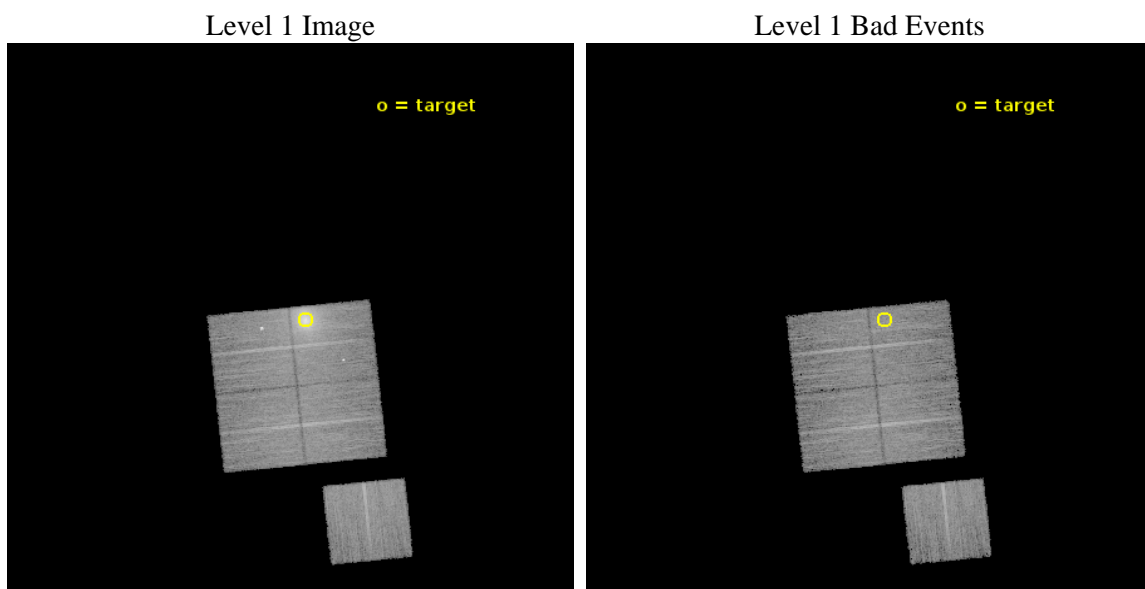
seq_num	890129	Sequence number
obs_id	18436	Observation id
title	AO-17 Calibration Observations of A1795	Proposal title
observer	Dr. CXC Calibration	Principal investigator
object	A1795	Source name
dtcycle	0	
cycle	P	events from which exps? Prim/Second/Both
ra_targ	207.219583	Observer's specified target RA [deg]
dec_targ	26.590833	Observer's specified target Dec [deg]
ra_nom	207.2496633877	Nominal RA [deg]
dec_nom	26.576870054338	Nominal Dec [deg]
roll_nom	174.04997471579	Nominal Roll [deg]
revision	1	Processing version of data
ontime	15053.559035659	Sum of GTIs [s]
livetime	14856.873204589	Livetime [s]
ontime0	15053.559035659	Sum of GTIs [s]
ontime1	15056.700115919	Sum of GTIs [s]
ontime2	15056.700115919	Sum of GTIs [s]
ontime3	15056.700115919	Sum of GTIs [s]
ontime6	15053.559055686	Sum of GTIs [s]
l2events	107116	Number of level 2 events



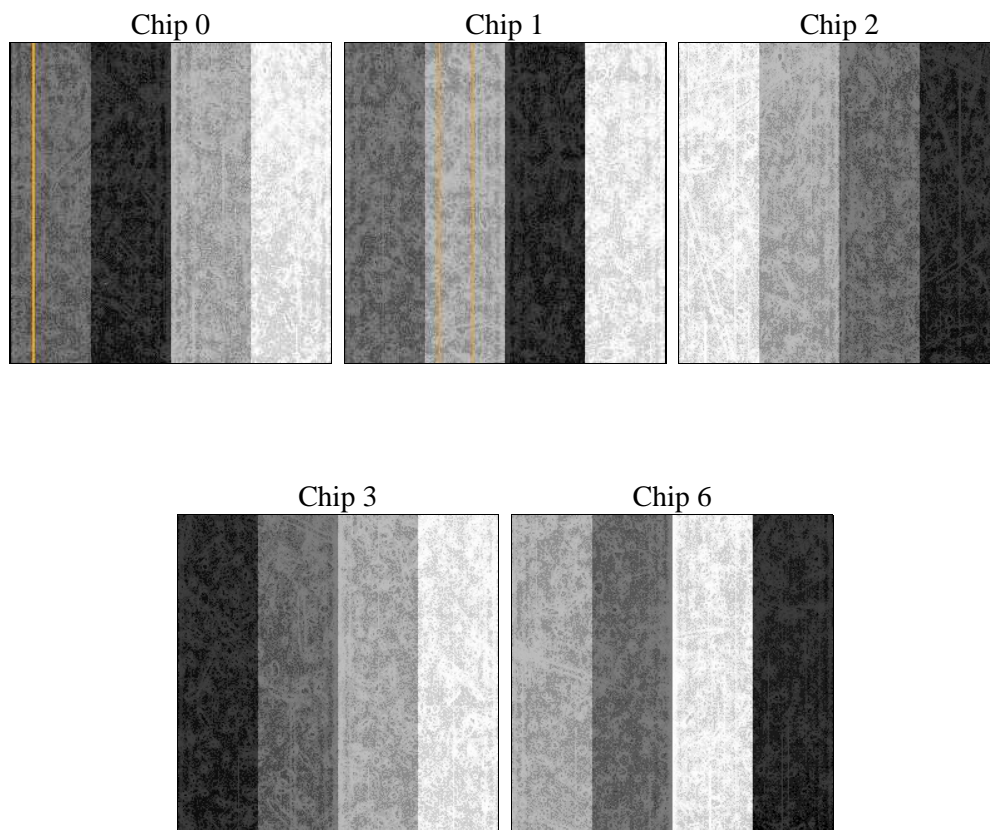
2 OBI

2.1 OBI

2.1.1 Images



2.1.2 Bias



2.1.3 Parameters

obi_num	0	Obi number	sched_exp_time	15000.000000	[s] Scheduled observation exposure time
ascdsver	10.4.3.1	Processing system revision	ontime	15053.559035659	Sum of GTIs [s]
caldbver	4.7.1	 	ontime0	15053.559035659	Sum of GTIs [s]
date	2016-04-15T17:17:57	Date and time of file creation	ontime1	15056.700115919	Sum of GTIs [s]
revision	1	Processing version of data	ontime2	15056.700115919	Sum of GTIs [s]
			ontime3	15056.700115919	Sum of GTIs [s]
			ontime6	15053.559055686	Sum of GTIs [s]
			l1events	525330	Number of level 1 events

2.1.4 Events

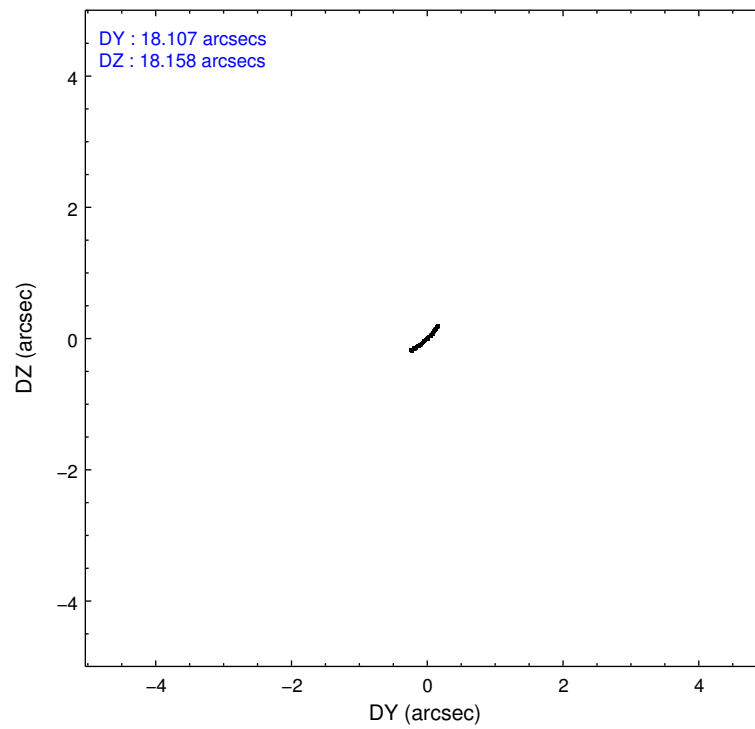
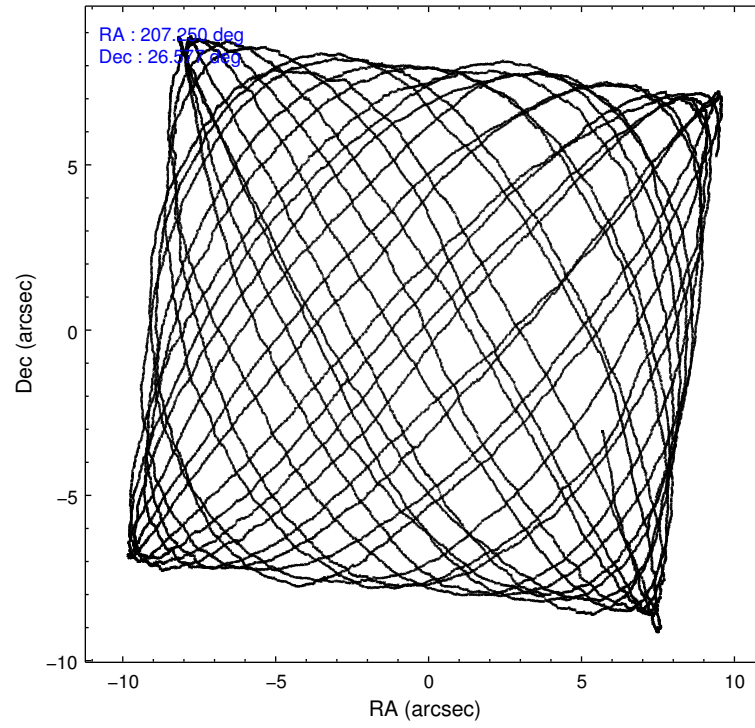
	ccd 0	ccd 1	ccd 2	ccd 3	ccd 6
level 1 events	145427	97369	95327	92720	94487
rejected events	75619	76363	84943	82762	84479
rejected %	51%	78%	89%	89%	89%

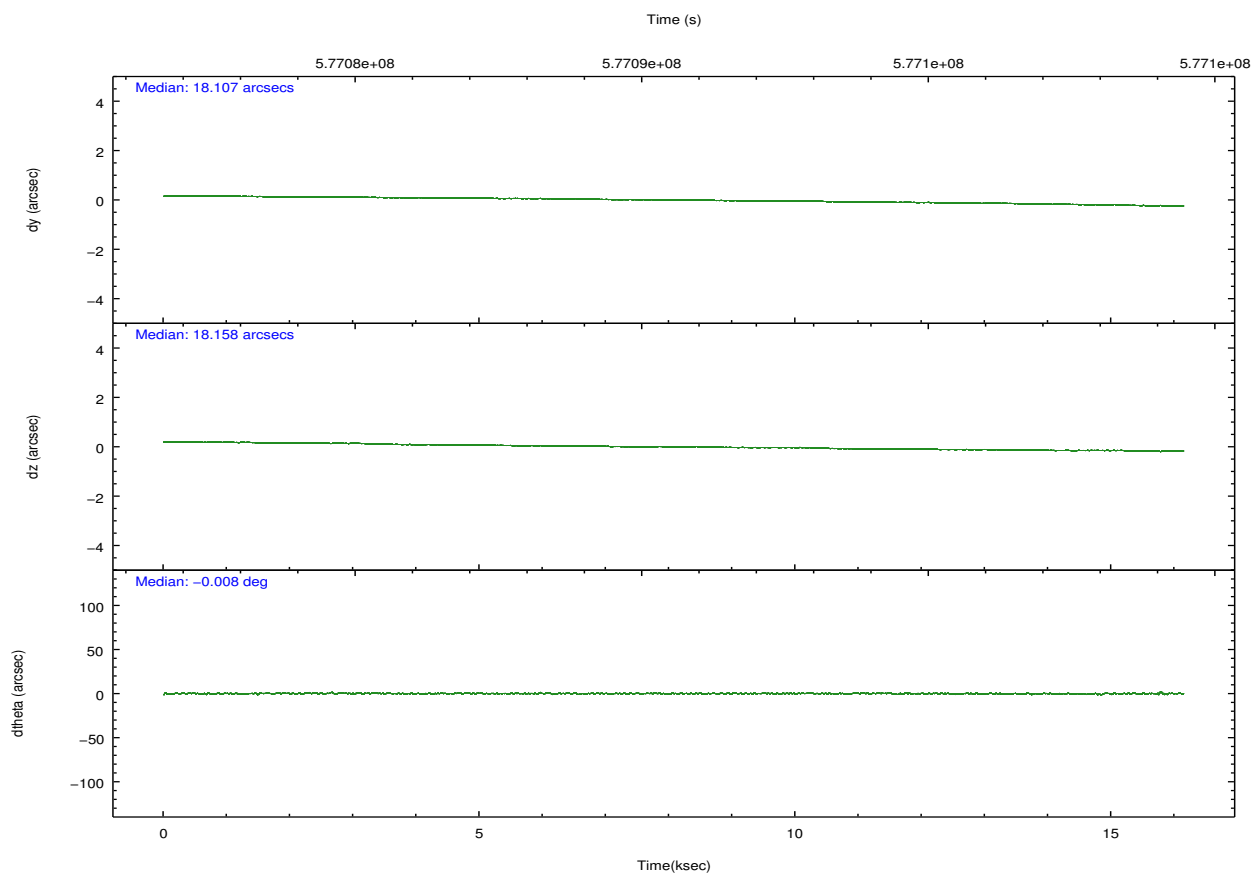
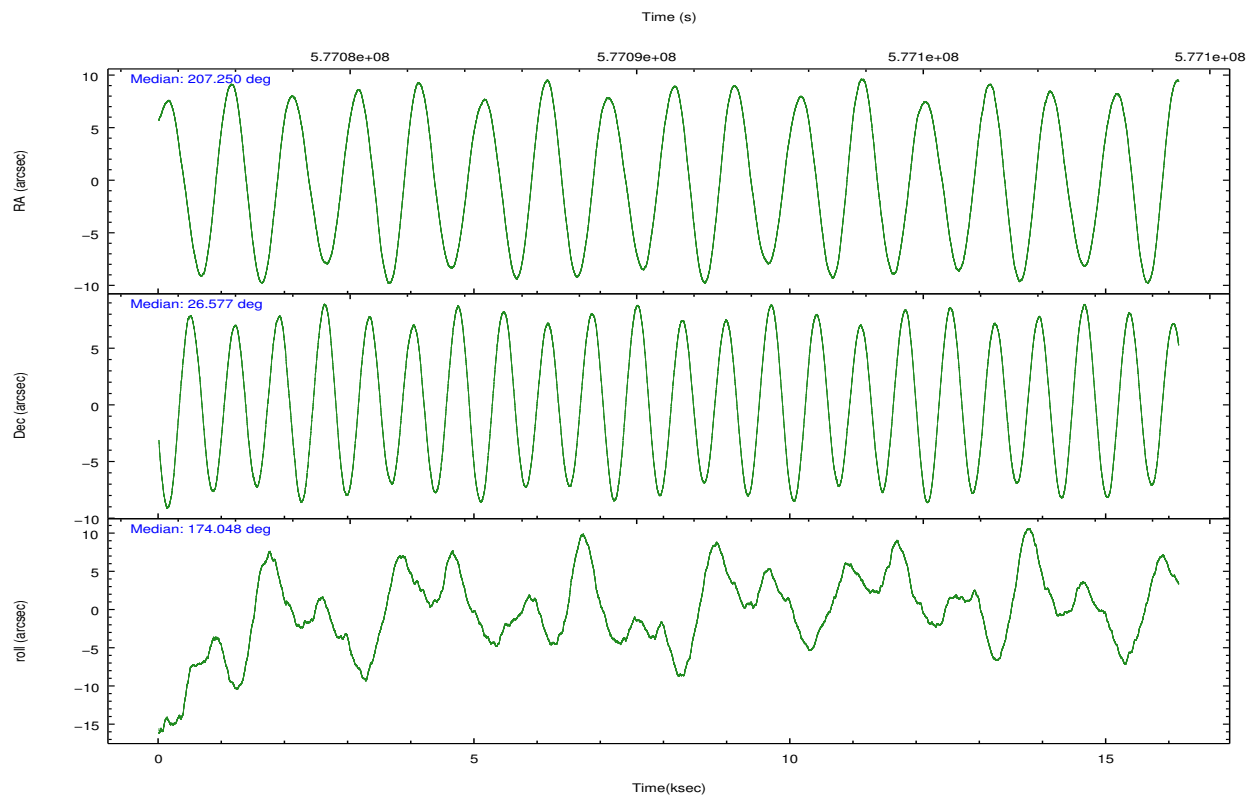
	ccd 0	ccd 1	ccd 2	ccd 3	ccd 6
grade 0 events	50628	11732	4262	3636	3078
	34%	12%	4%	3%	3%
grade 1 events	239	83	54	53	38
	0%	0%	0%	0%	0%
grade 2 events	9318	3815	2276	2121	2511
	6%	3%	2%	2%	2%
grade 3 events	2987	1296	997	1064	952
	2%	1%	1%	1%	1%
grade 4 events	2872	1208	981	1010	924
	1%	1%	1%	1%	0%
grade 5 events	3928	4046	3500	4259	3919
	2%	4%	3%	4%	4%
grade 6 events	4022	2958	1871	2130	2546
	2%	3%	1%	2%	2%
grade 7 events	71433	72231	81386	78447	80519
	49%	74%	85%	84%	85%

2.2 Compared Parameters

Parameter	Planned	Actual	Parameter	Planned	Actual
Instrument	ACIS	ACIS	Obspar format version number	7	7
Detector	ACIS-01236	ACIS-01236	Obspar file type	PREDICTED	ACTUAL
Grating	NONE	NONE	Obspar update status	NONE	UPDATED
Data mode	VFAINT	VFAINT	Number of optional ACIS chips dropped	0	0
Observation mode	POINTING	POINTING	On-chip summing requested	N	N
[deg] Pointing RA	207.277787	207.2496633877	Subarray requested	NONE	NONE
[deg] Pointing Dec	26.588226	26.57687005433768	Alternating exposures requested	N	N
[deg] Pointing Roll	173.828707	174.0499747157864	[s] Primary exposure time	0.000000	3.1
[s] Window start time (MET)	575856068.184000	575856068.184000			
[s] Window stop time (MET)	578361668.184000	578361668.184000			
[mm] SIM focus pos	-0.782348	-0.7809083437167272			
[mm] SIM defocus	0	0.001439871863259334			
[mm] SIM translation stage pos	-254.359963	-254.3657361129205			
[mm] SIM translation stage offset	20.7675	20.77328310999084			
[s] Observation start time (MET)	577083652.184000	577082231.94294			
Observation start date	2016-04-15T04:59:44	2016-04-15T04:37:11			
[s] Observation end time (MET)	577098652.184000	577099207.99391			
Observation end date	2016-04-15T09:09:44	2016-04-15T09:20:07			
Read mode	TIMED	TIMED			

2.3 Aspect



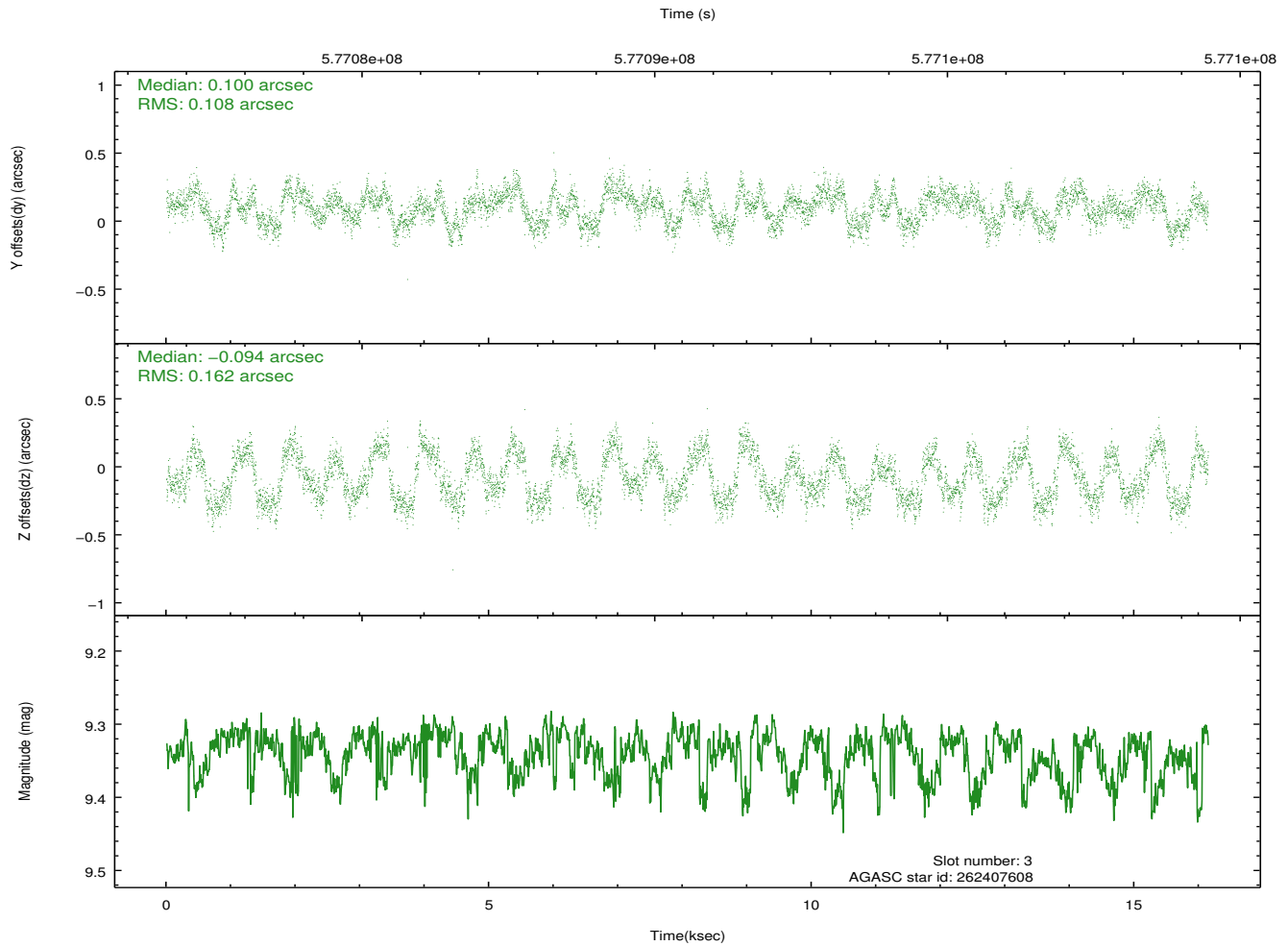
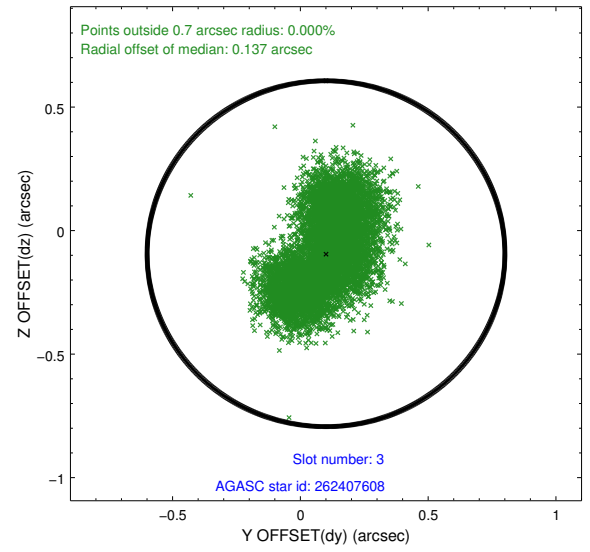
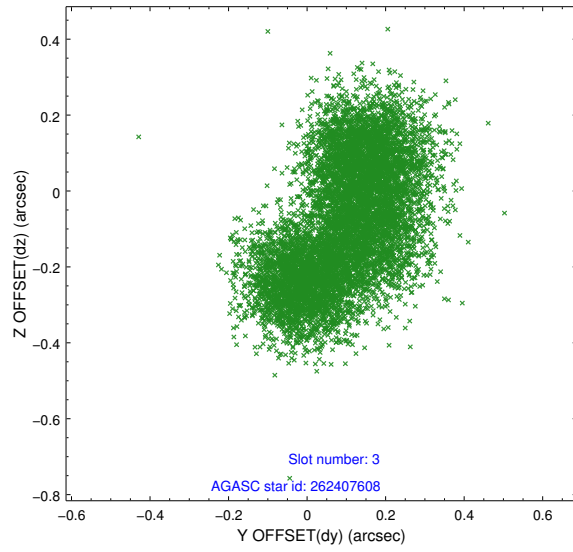


Slot Statistics

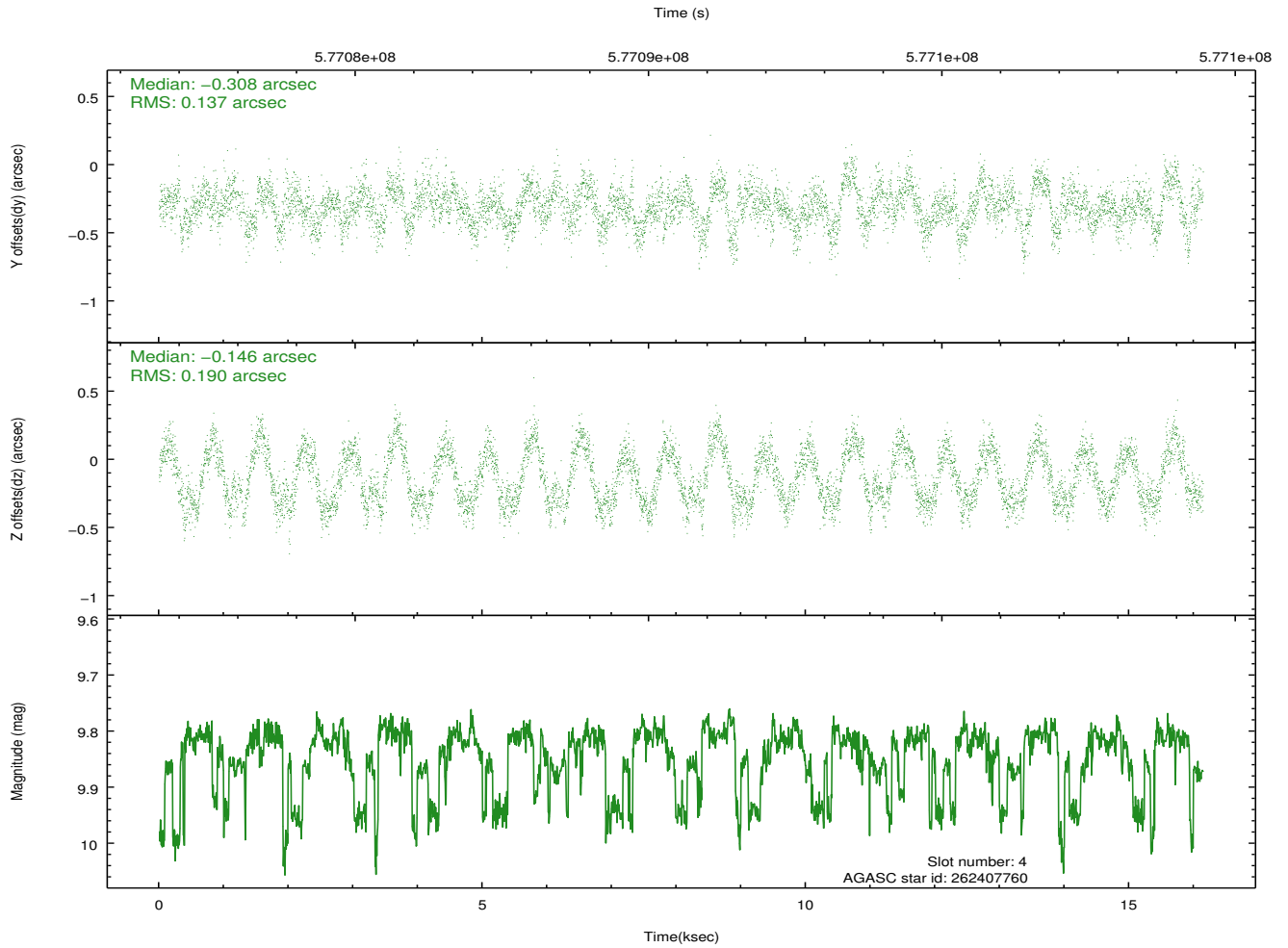
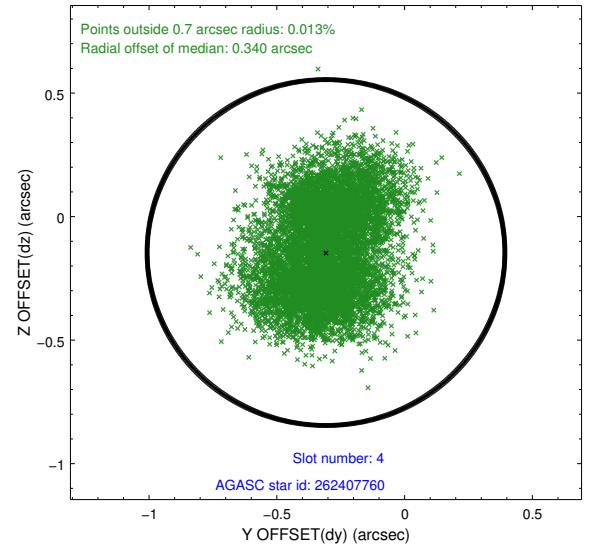
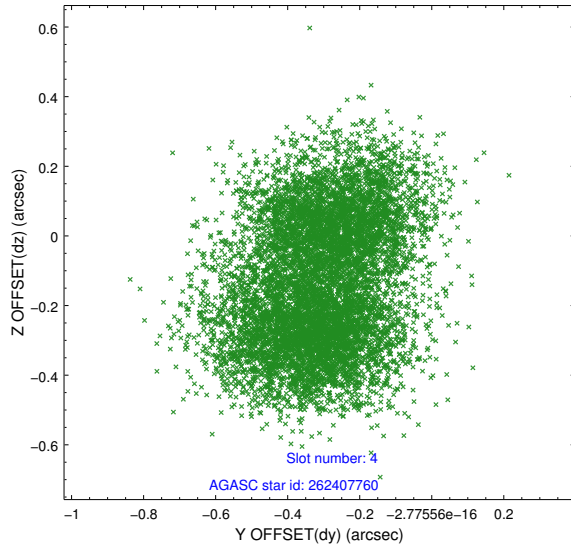
slot	status	used	id	mag	n_pts	med_dy	med_dz	dr1	dr2	ra	dec	mean_y	mean_z
0	FID		ACIS-I-1	7.36	3938	-0.065	0.144	0.007	0.013	0.000000	0.000000	921.65	-414.77
1	FID		ACIS-I-5	7.28	3938	-0.196	-0.035	0.007	0.013	0.000000	0.000000	-1826.64	1482.22
2	FID		ACIS-I-6	7.25	3938	0.170	-0.041	0.008	0.013	0.000000	0.000000	386.87	2127.23
3	GUIDE	used	262407608	9.34	7871	0.100	-0.094	0.216	0.314	207.378401	26.435507	-381.28	511.77
4	GUIDE	used	262407760	9.84	7723	-0.308	-0.146	0.254	0.385	206.566773	26.577263	2272.80	279.07
5	GUIDE	used	262408096	9.30	7866	-0.086	-0.058	0.163	0.273	207.011678	26.515421	825.37	351.87
6	GUIDE	used	262408512	7.98	7875	0.248	0.222	0.083	0.132	207.800210	27.128796	-1453.75	-2117.77
7	GUIDE	used	262408936	9.68	7870	0.038	0.049	0.167	0.265	207.154731	26.726554	446.91	-452.59

2.4 Star Slots

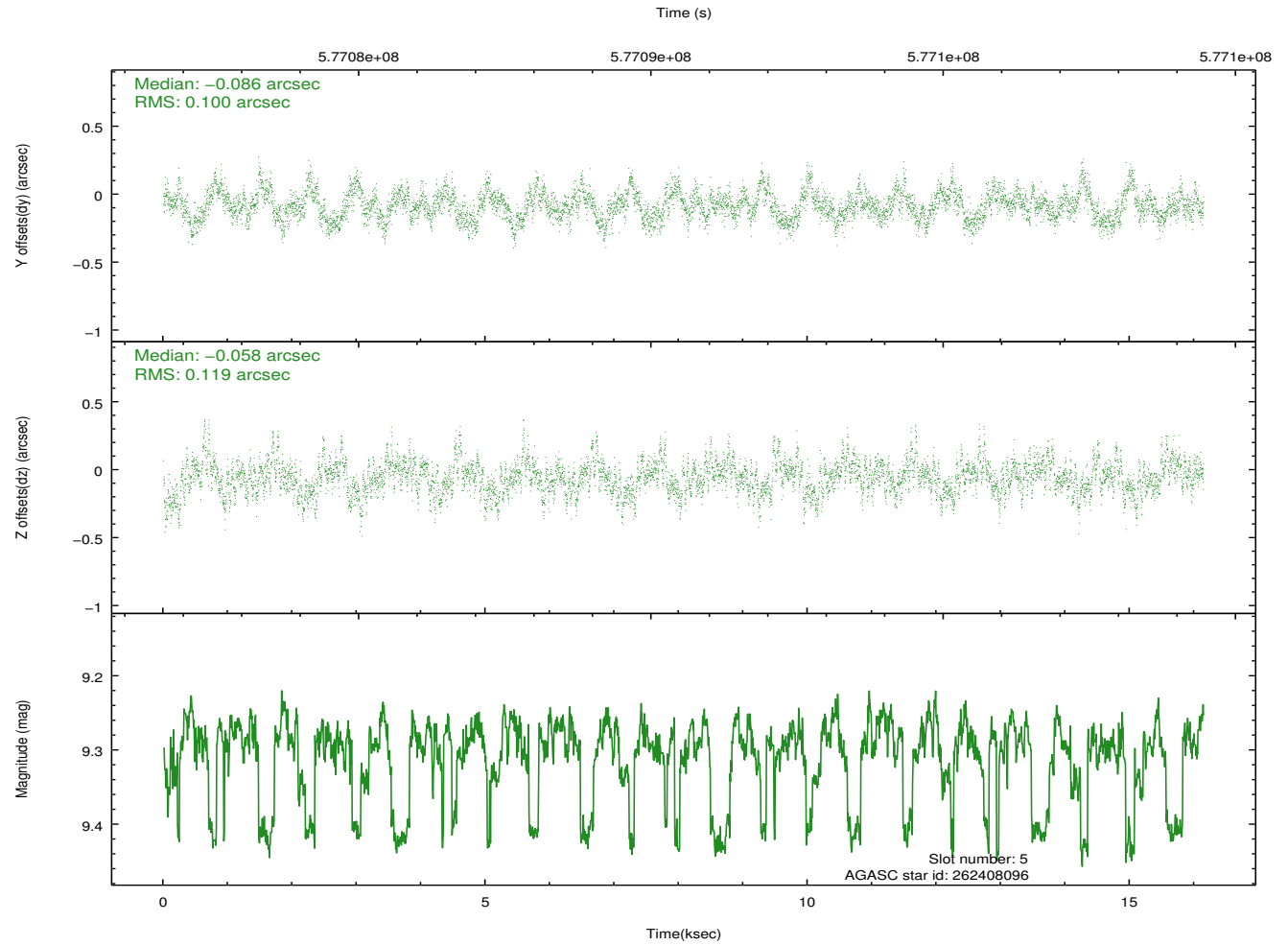
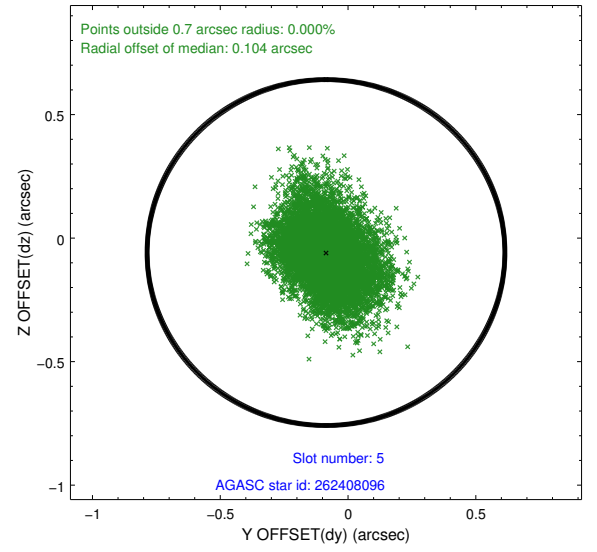
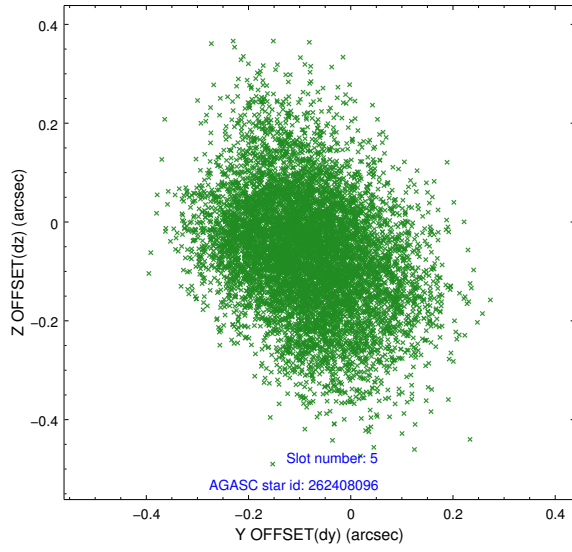
2.4.1 Slot 3



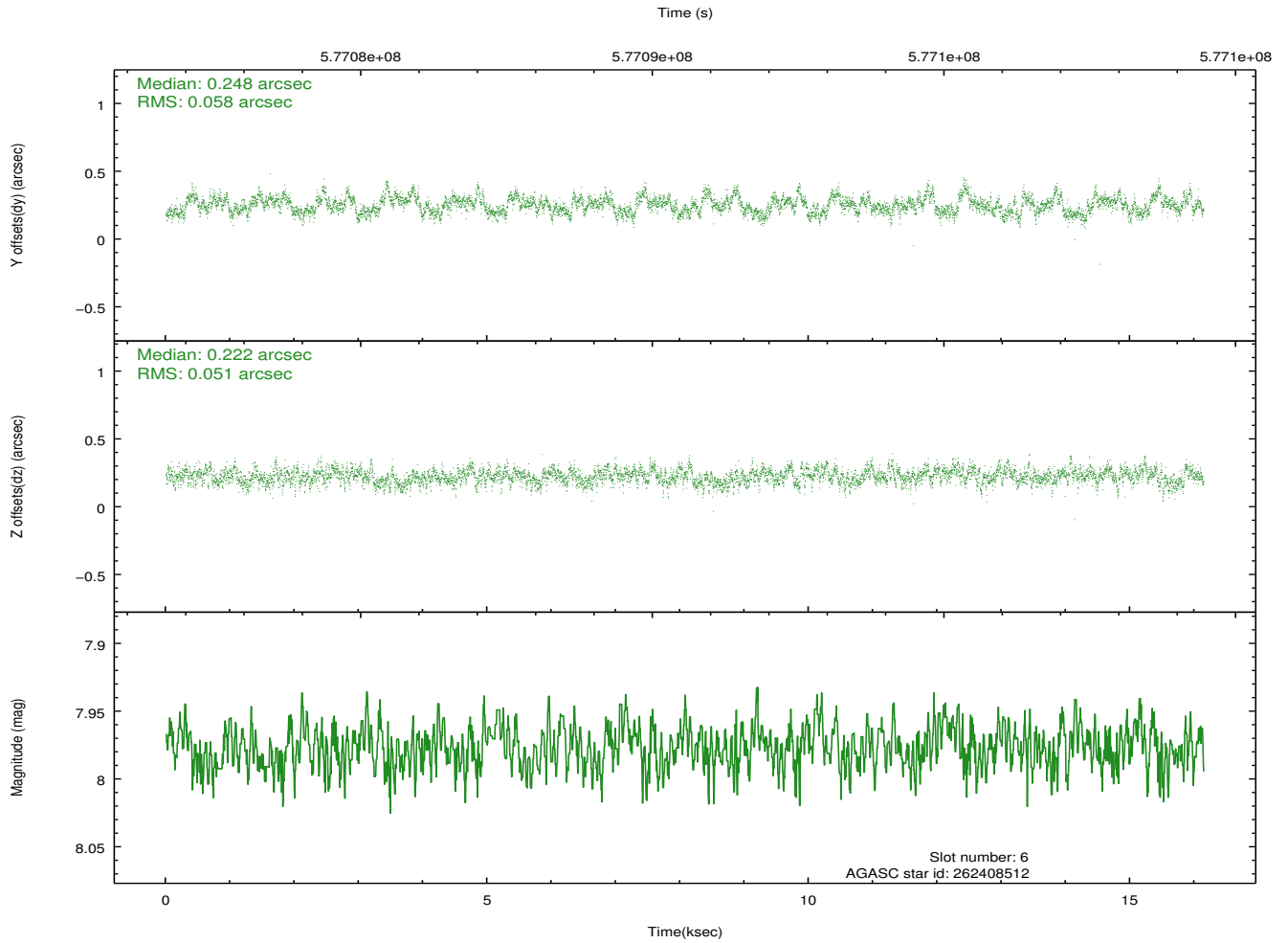
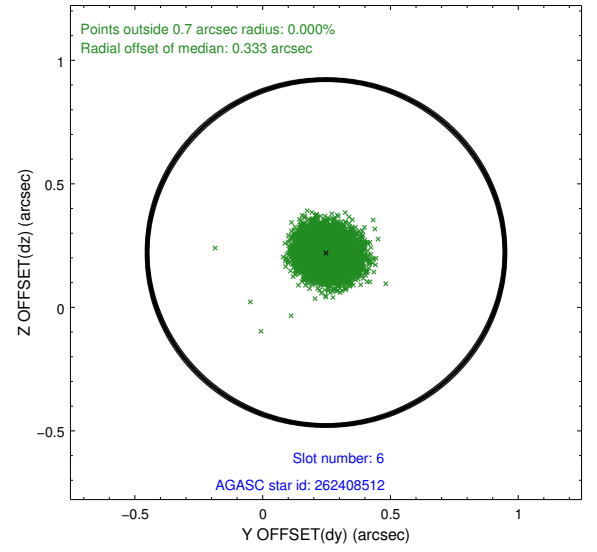
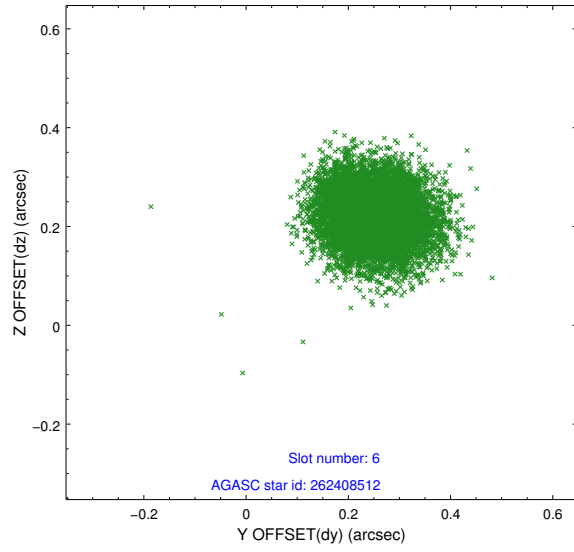
2.4.2 Slot 4



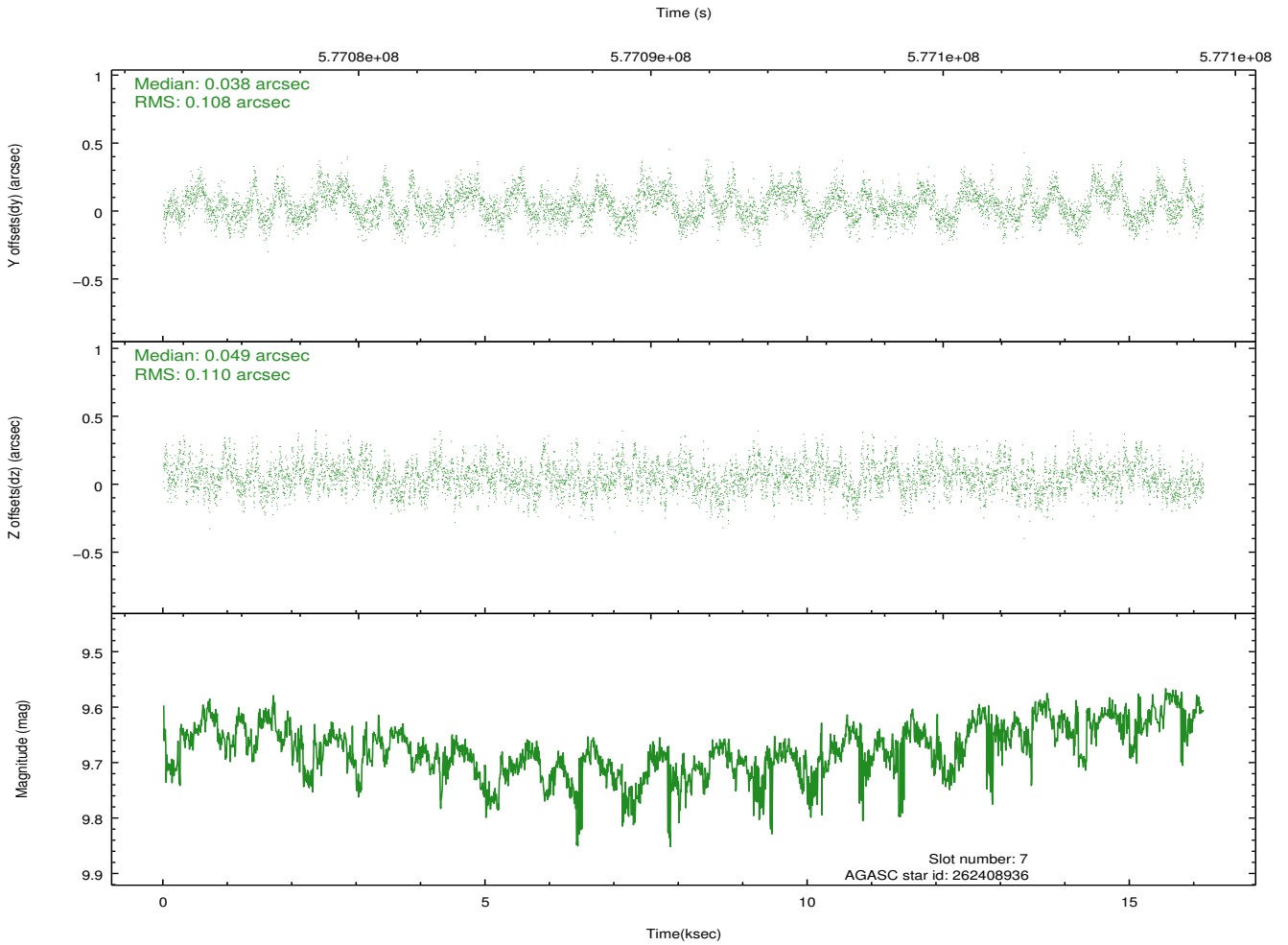
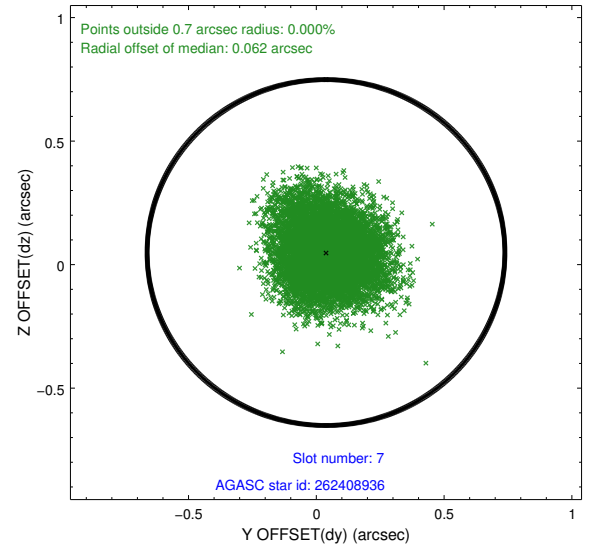
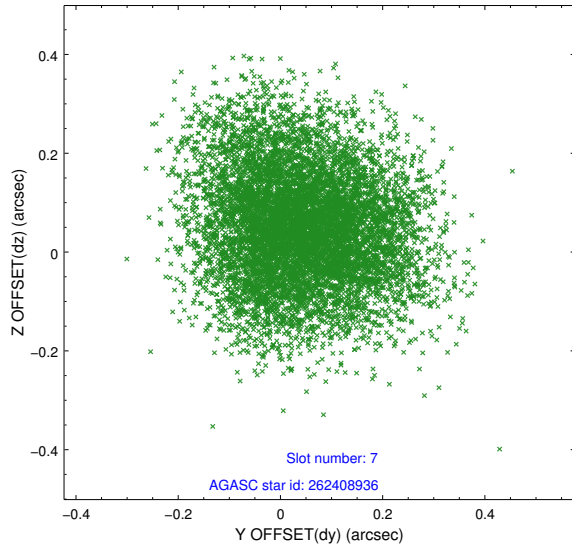
2.4.3 Slot 5



2.4.4 Slot 6

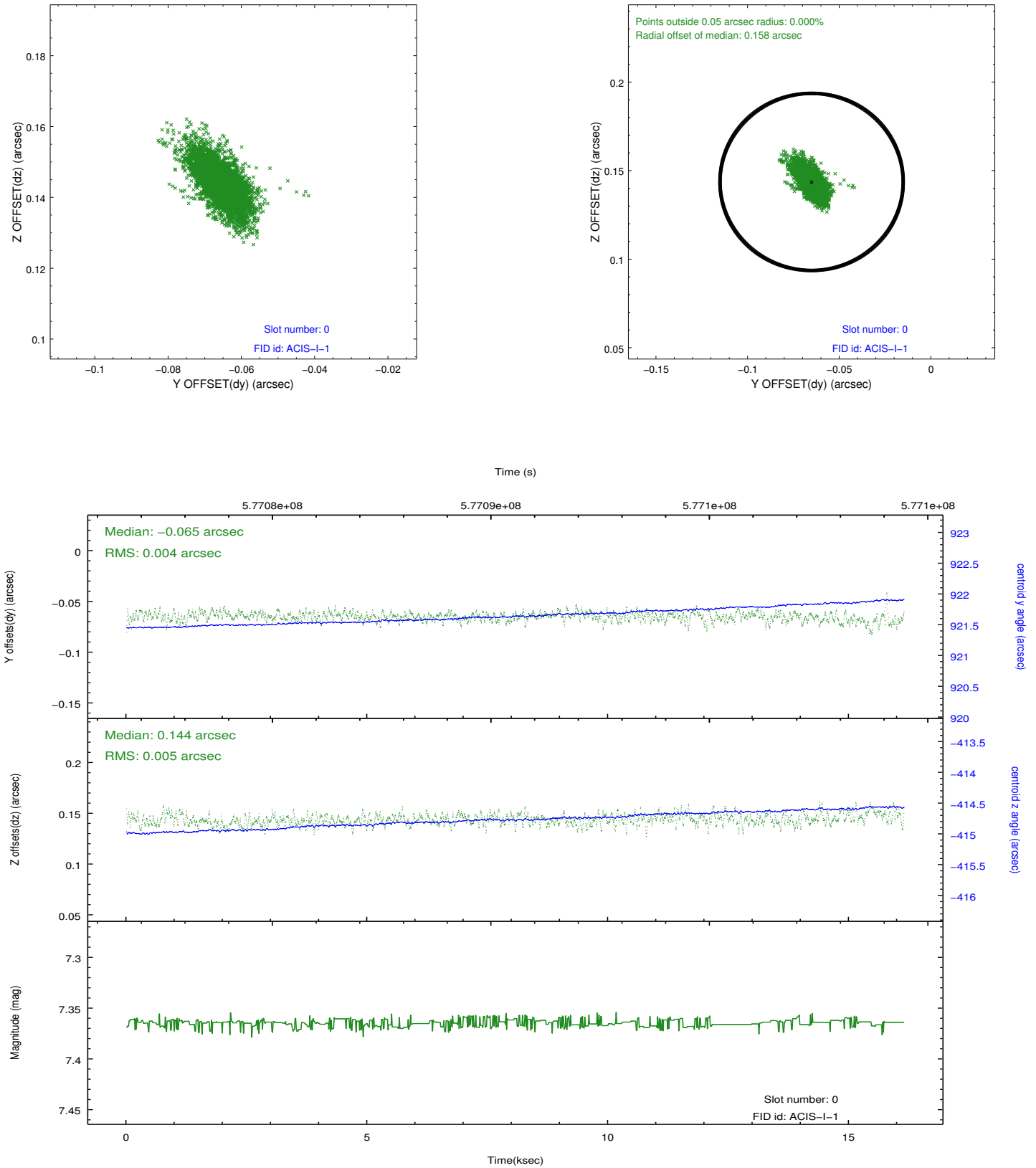


2.4.5 Slot 7

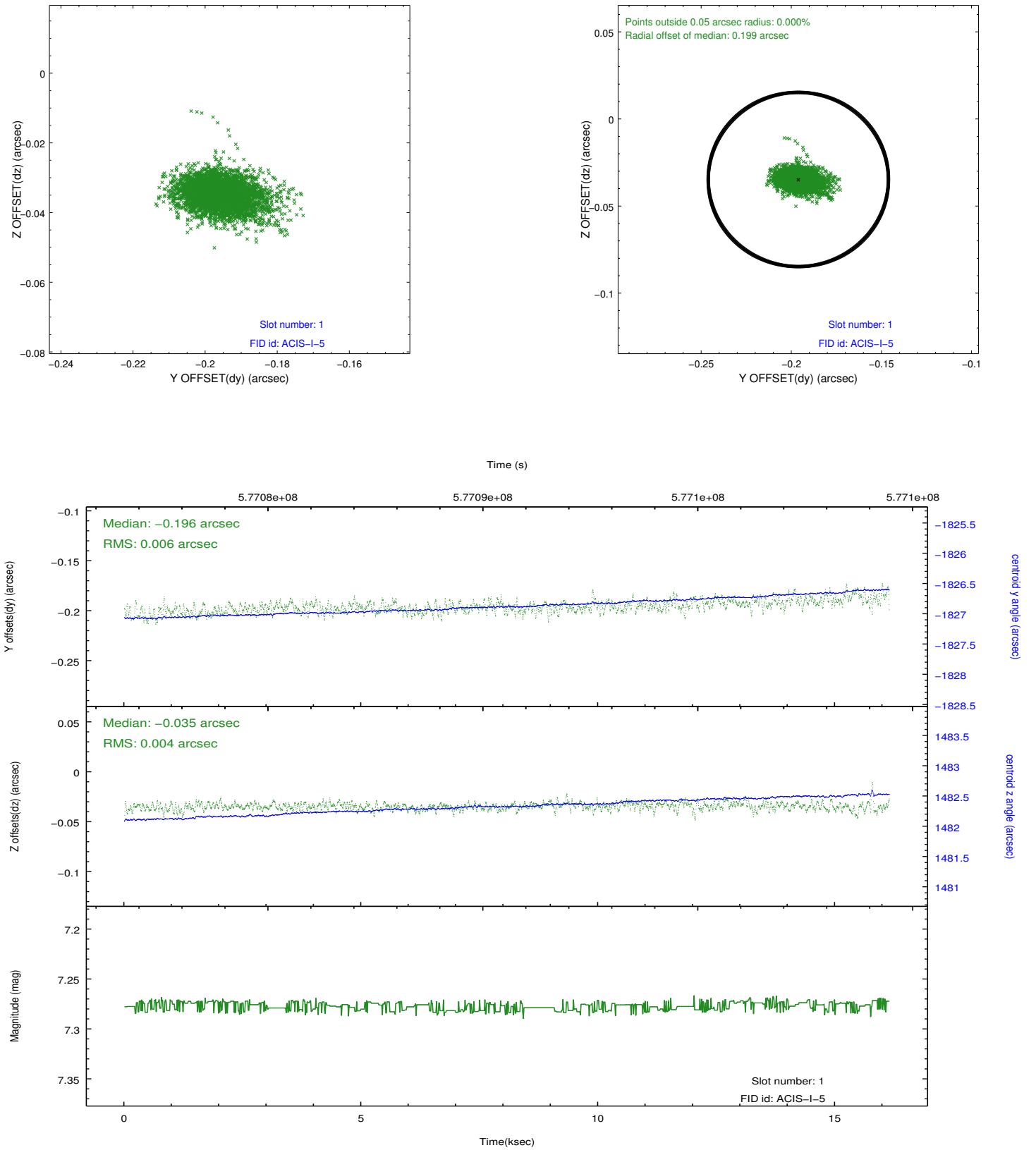


2.5 FID Slots

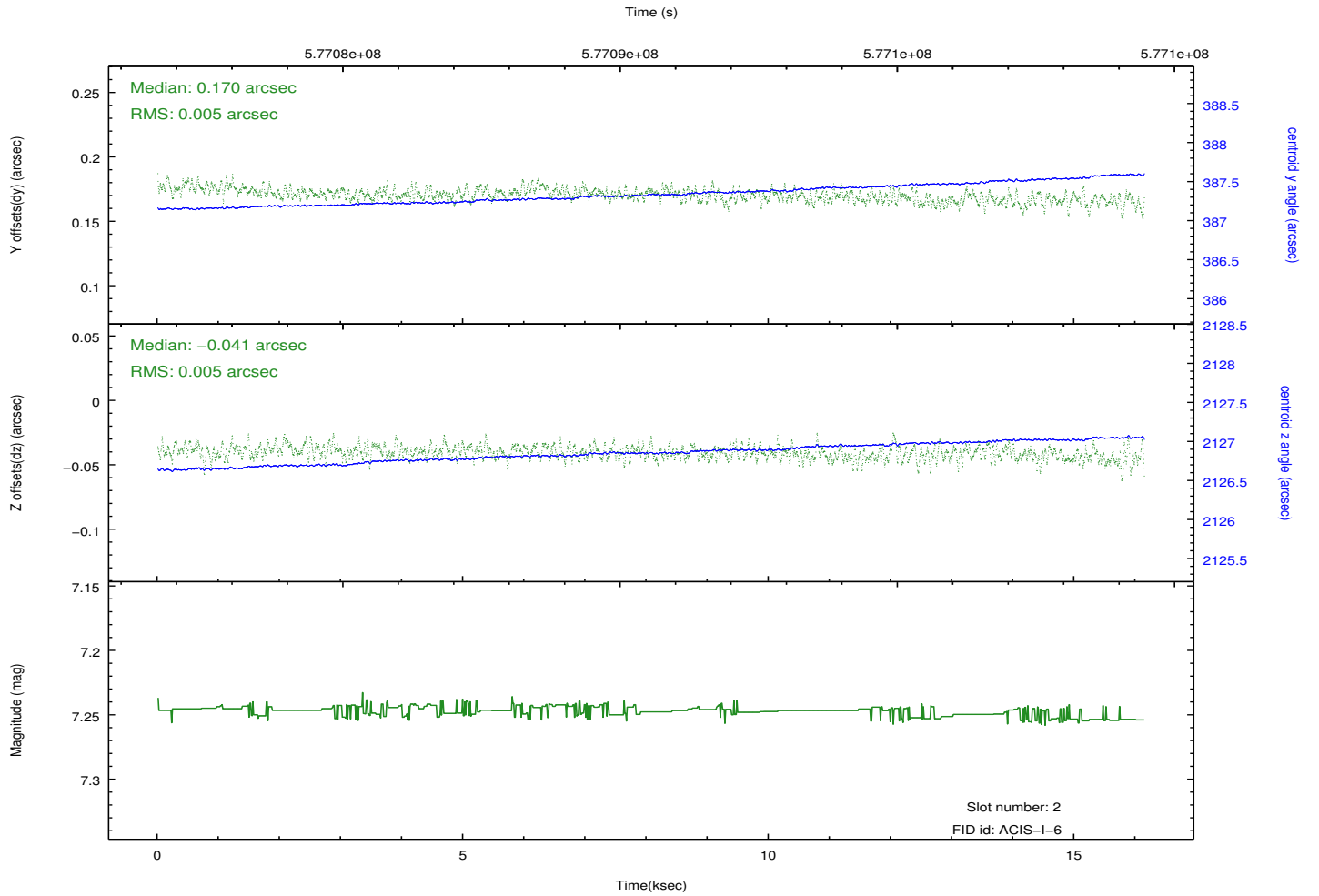
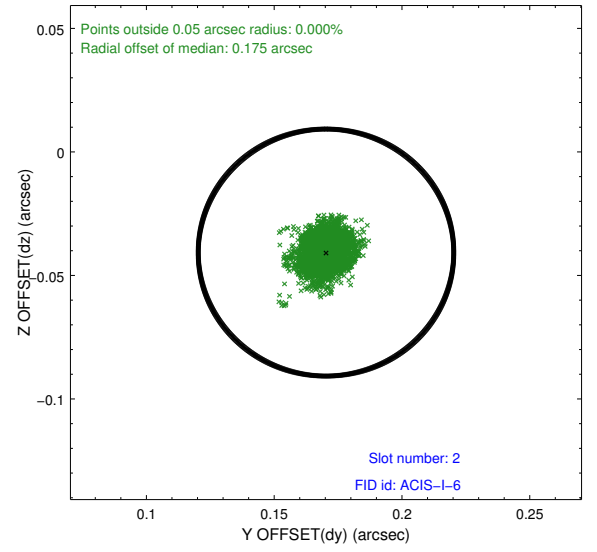
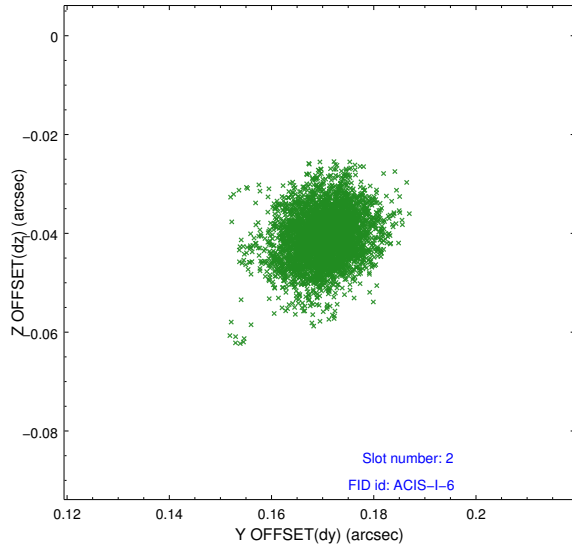
2.5.1 Slot 0



2.5.2 Slot 1



2.5.3 Slot 2



A Summary

A.1 Status

V&V Scientist	Beth Sundheim
V&V Date (YYYY-MM-DD)	2016.04.15
V&V Edition	1
V&V Disposition and Status	OK
V&V Charge Time	15.053559035659

A.2 Comments

Window preference met.