

V&V Reference Report

L2 ASCDS Version : 10.4.3.1

Observation 18431 - L2 Version 1
Chandra X-Ray Center

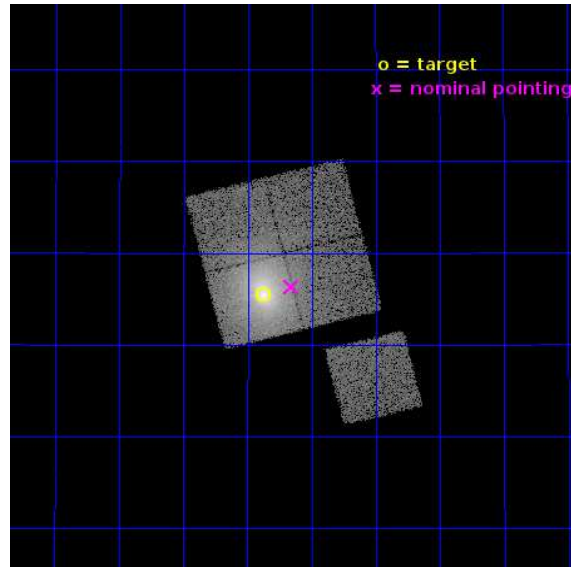
L2 Processing Date : Apr 10 2016

Contents

1	Front	2
2	OBI	3
2.1	OBI	3
2.1.1	Images	3
2.1.2	Bias	3
2.1.3	Parameters	4
2.1.4	Events	4
2.2	Compared Parameters	5
2.3	Aspect	6
2.4	Star Slots	9
2.4.1	Slot 3	9
2.4.2	Slot 4	10
2.4.3	Slot 5	11
2.4.4	Slot 6	12
2.4.5	Slot 7	13
2.5	FID Slots	14
2.5.1	Slot 0	14
2.5.2	Slot 1	15
2.5.3	Slot 2	16
A	Summary	17
A.1	Status	17
A.2	Comments	17

1 Front

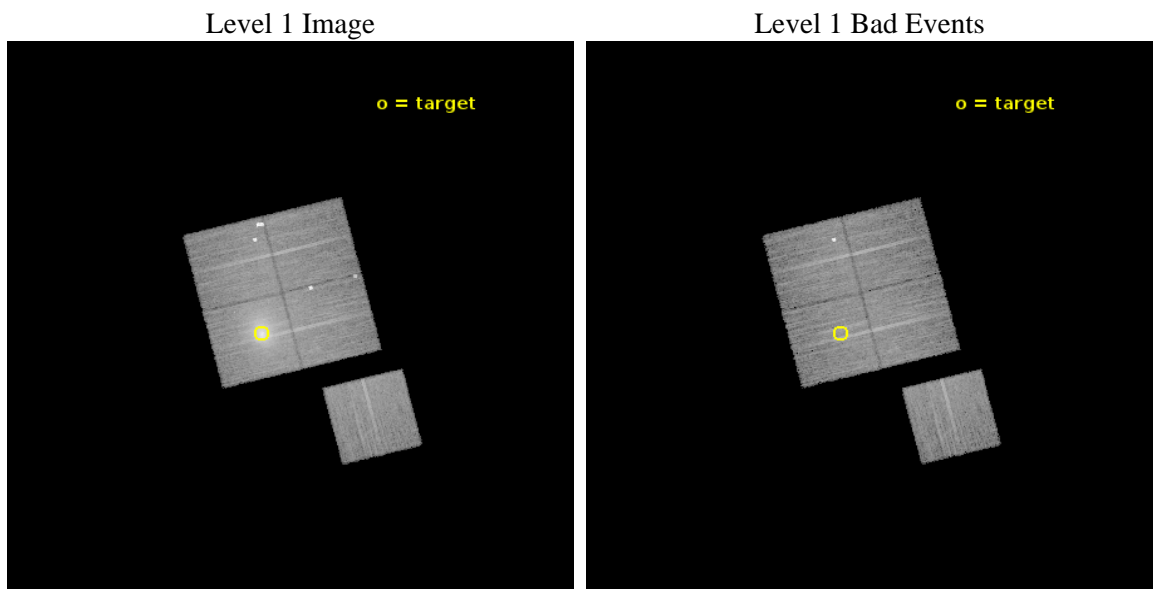
seq_num	890124	Sequence number
obs_id	18431	Observation id
title	AO-17 Calibration Observations of A1795	Proposal title
observer	Dr. CXC Calibration	Principal investigator
object	A1795	Source name
dtcycle	0	
cycle	P	events from which exps? Prim/Second/Both
ra_targ	207.219583	Observer's specified target RA [deg]
dec_targ	26.590833	Observer's specified target Dec [deg]
ra_nom	207.1644954572	Nominal RA [deg]
dec_nom	26.605893548132	Nominal Dec [deg]
roll_nom	165.80228258627	Nominal Roll [deg]
revision	1	Processing version of data
ontime	14207.300109386	Sum of GTIs [s]
livetime	14021.671274195	Livetime [s]
ontime0	14207.300109386	Sum of GTIs [s]
ontime1	14204.159049273	Sum of GTIs [s]
ontime2	14204.159019113	Sum of GTIs [s]
ontime3	14207.300109386	Sum of GTIs [s]
ontime6	14207.300109386	Sum of GTIs [s]
l2events	128885	Number of level 2 events



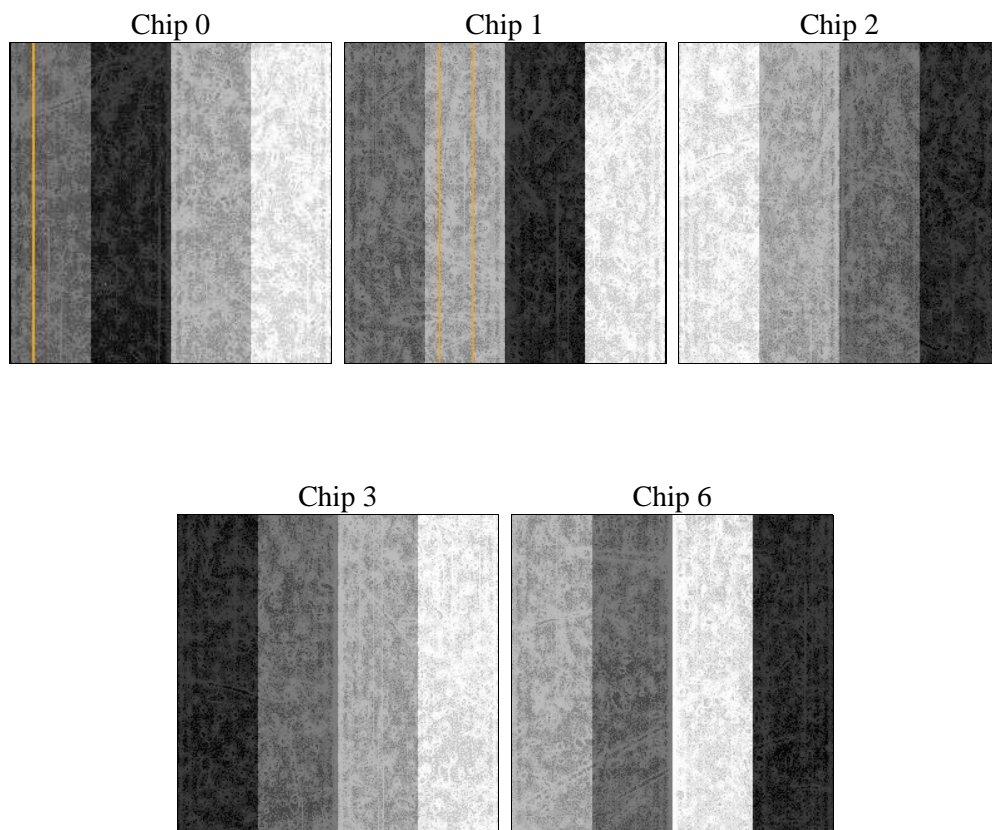
2 OBI

2.1 OBI

2.1.1 Images



2.1.2 Bias



2.1.3 Parameters

obi_num	0	Obi number	sched_exp_time	14152.000000	[s] Scheduled observation exposure time
ascdsver	10.4.3.1	Processing system revision	ontime	14207.300109386	Sum of GTIs [s]
caldsver	4.7.1	 	ontime0	14207.300109386	Sum of GTIs [s]
date	2016-04-10T20:04:45	Date and time of file creation	ontime1	14204.159049273	Sum of GTIs [s]
revision	1	Processing version of data	ontime2	14204.159019113	Sum of GTIs [s]
			ontime3	14207.300109386	Sum of GTIs [s]
			ontime6	14207.300109386	Sum of GTIs [s]
			l1events	559896	Number of level 1 events

2.1.4 Events

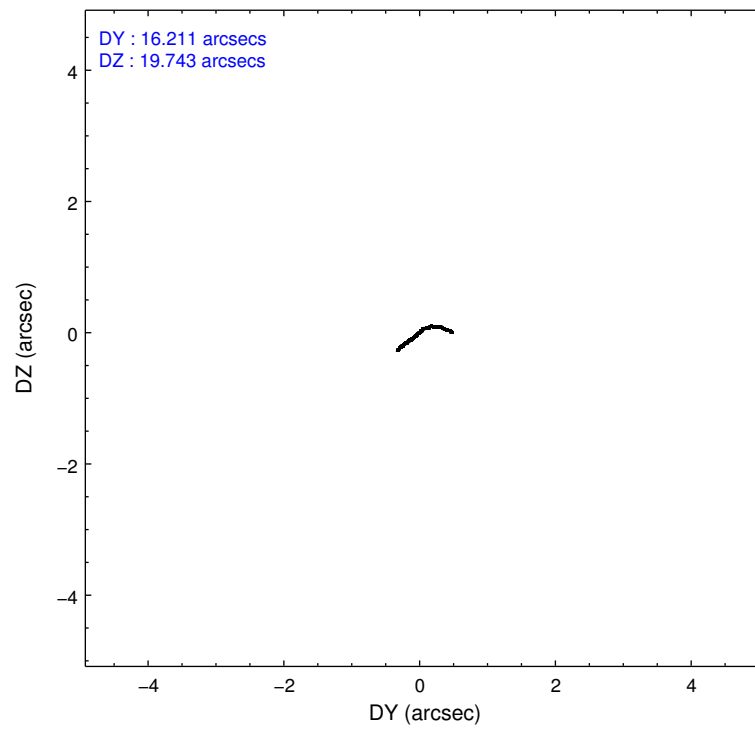
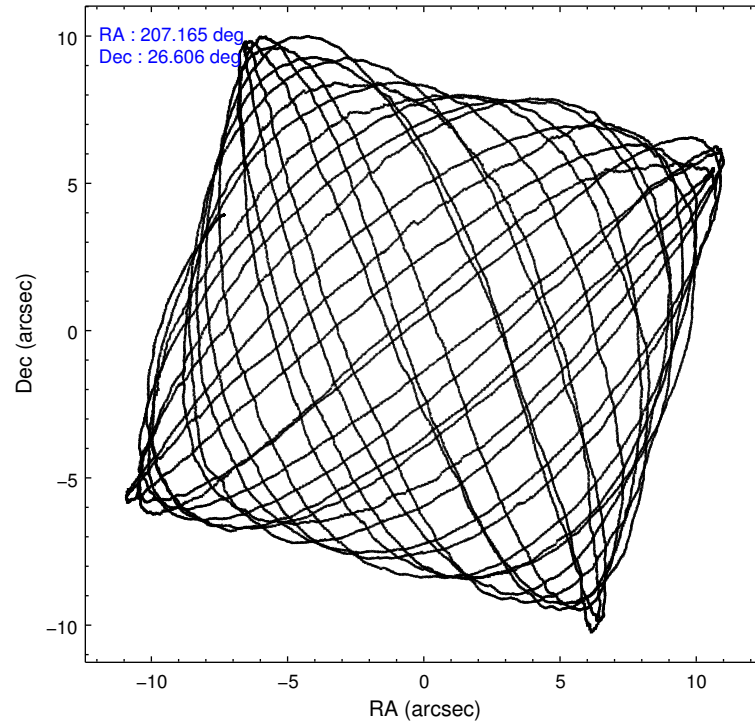
	ccd 0	ccd 1	ccd 2	ccd 3	ccd 6
level 1 events	82638	106872	105257	172869	92260
rejected events	71286	82067	85704	84183	81894
rejected %	86%	76%	81%	48%	88%

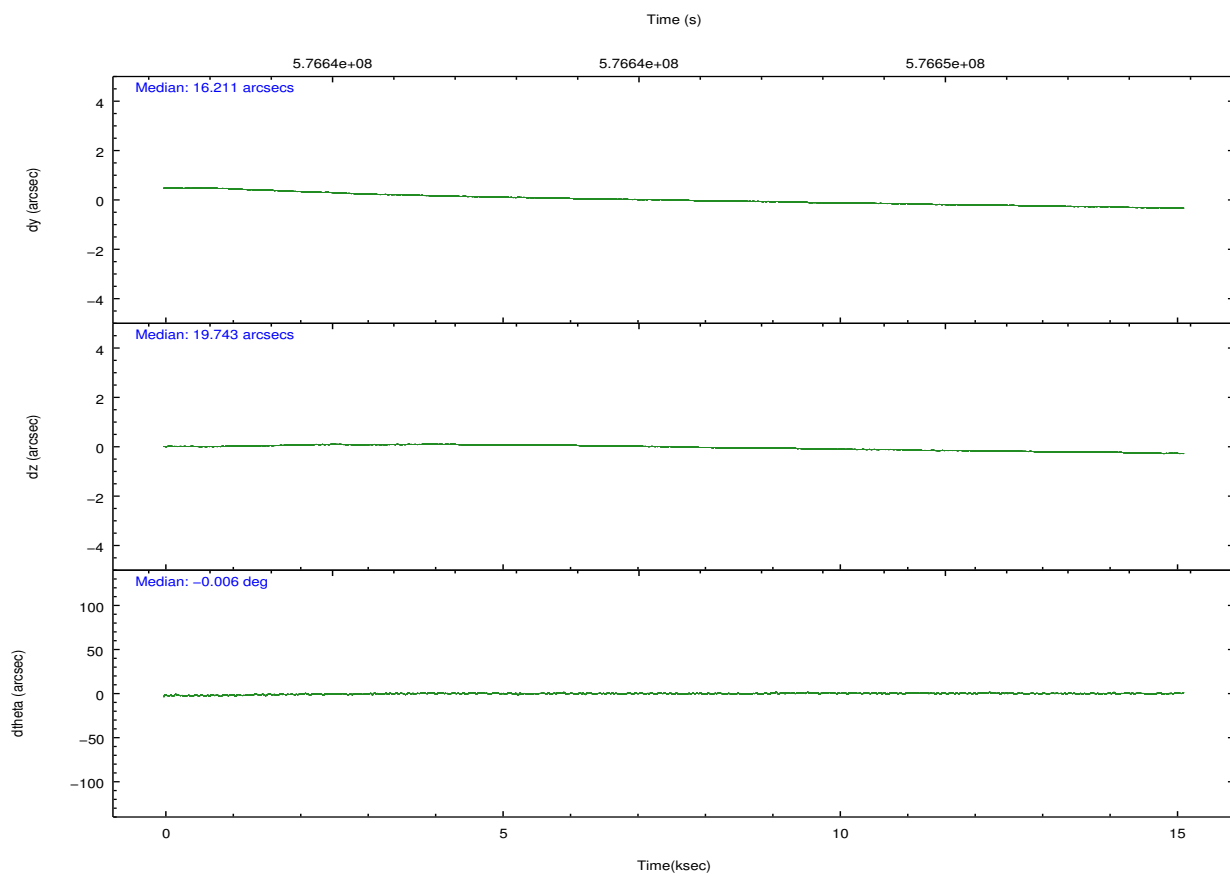
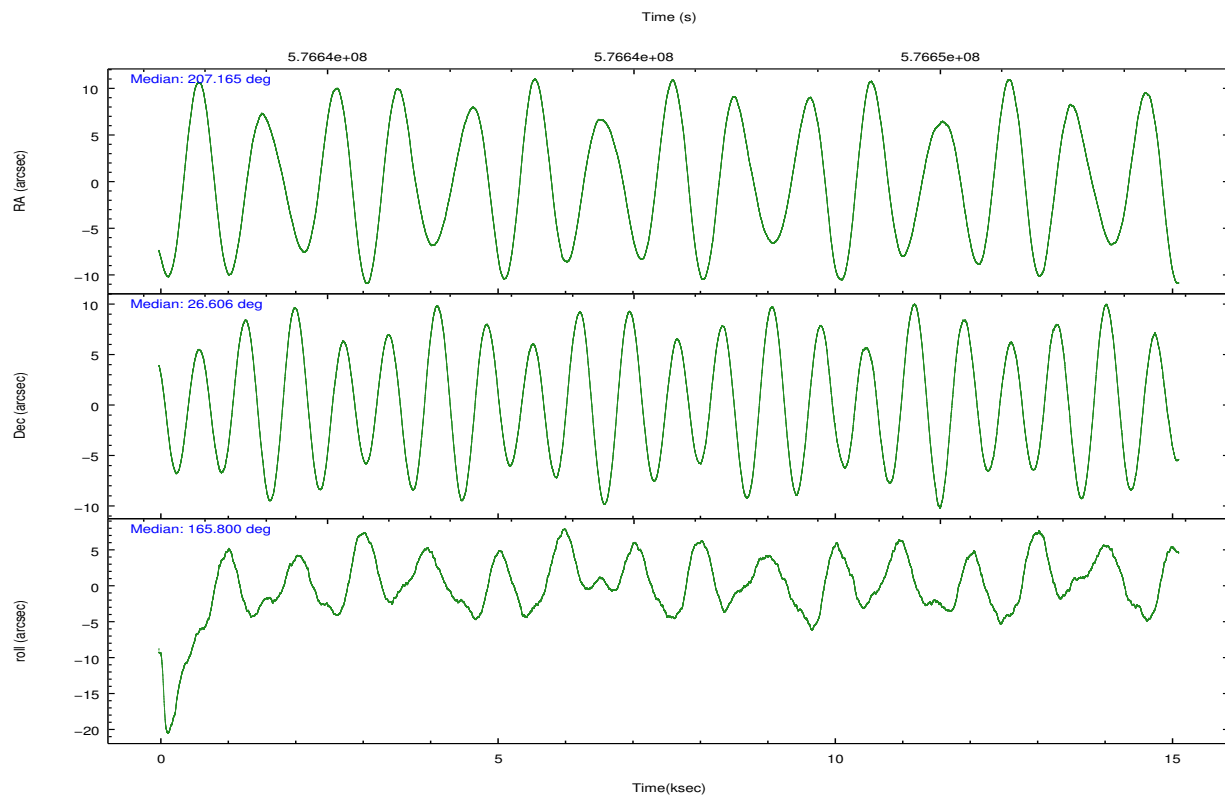
	ccd 0	ccd 1	ccd 2	ccd 3	ccd 6
grade 0 events	4480	7188	7247	67542	3336
	5%	6%	6%	39%	3%
grade 1 events	37	4384	73	378	41
	0%	4%	0%	0%	0%
grade 2 events	2504	12581	8081	10165	2535
	3%	11%	7%	5%	2%
grade 3 events	1106	1107	1062	3389	947
	1%	1%	1%	1%	1%
grade 4 events	999	1139	1122	3436	965
	1%	1%	1%	1%	1%
grade 5 events	3732	4018	3564	4565	4036
	4%	3%	3%	2%	4%
grade 6 events	2265	2800	2050	4193	2587
	2%	2%	1%	2%	2%
grade 7 events	67515	73655	82058	79201	77813
	81%	68%	77%	45%	84%

2.2 Compared Parameters

Parameter	Planned	Actual	Parameter	Planned	Actual
Instrument	ACIS	ACIS	Obspar format version number	7	7
Detector	ACIS-01236	ACIS-01236	Obspar file type	PREDICTED	ACTUAL
Grating	NONE	NONE	Obspar update status	NONE	UPDATED
Data mode	VFAINT	VFAINT	Number of optional ACIS chips dropped	0	0
Observation mode	POINTING	POINTING	On-chip summing requested	N	N
[deg] Pointing RA	207.194189	207.1644954572043	Subarray requested	NONE	NONE
[deg] Pointing Dec	26.613528	26.60589354813212	Alternating exposures requested	N	N
[deg] Pointing Roll	165.580294	165.8022825862721	[s] Primary exposure time	0.000000	3.1
[s] Window start time (MET)	575856068.184000	575856068.184000			
[s] Window stop time (MET)	578361668.184000	578361668.184000			
[mm] SIM focus pos	-0.782348	-0.7809083437167272			
[mm] SIM defocus	0	0.001439871863259334			
[mm] SIM translation stage pos	-224.862463	-224.8577317338124			
[mm] SIM translation stage offset	-8.73	-8.73472126911733			
[s] Observation start time (MET)	576638956.184000	576637568.46755			
Observation start date	2016-04-10T01:28:08	2016-04-10T01:06:08			
[s] Observation end time (MET)	576653108.184000	576653563.59347			
Observation end date	2016-04-10T05:24:00	2016-04-10T05:32:43			
Read mode	TIMED	TIMED			

2.3 Aspect



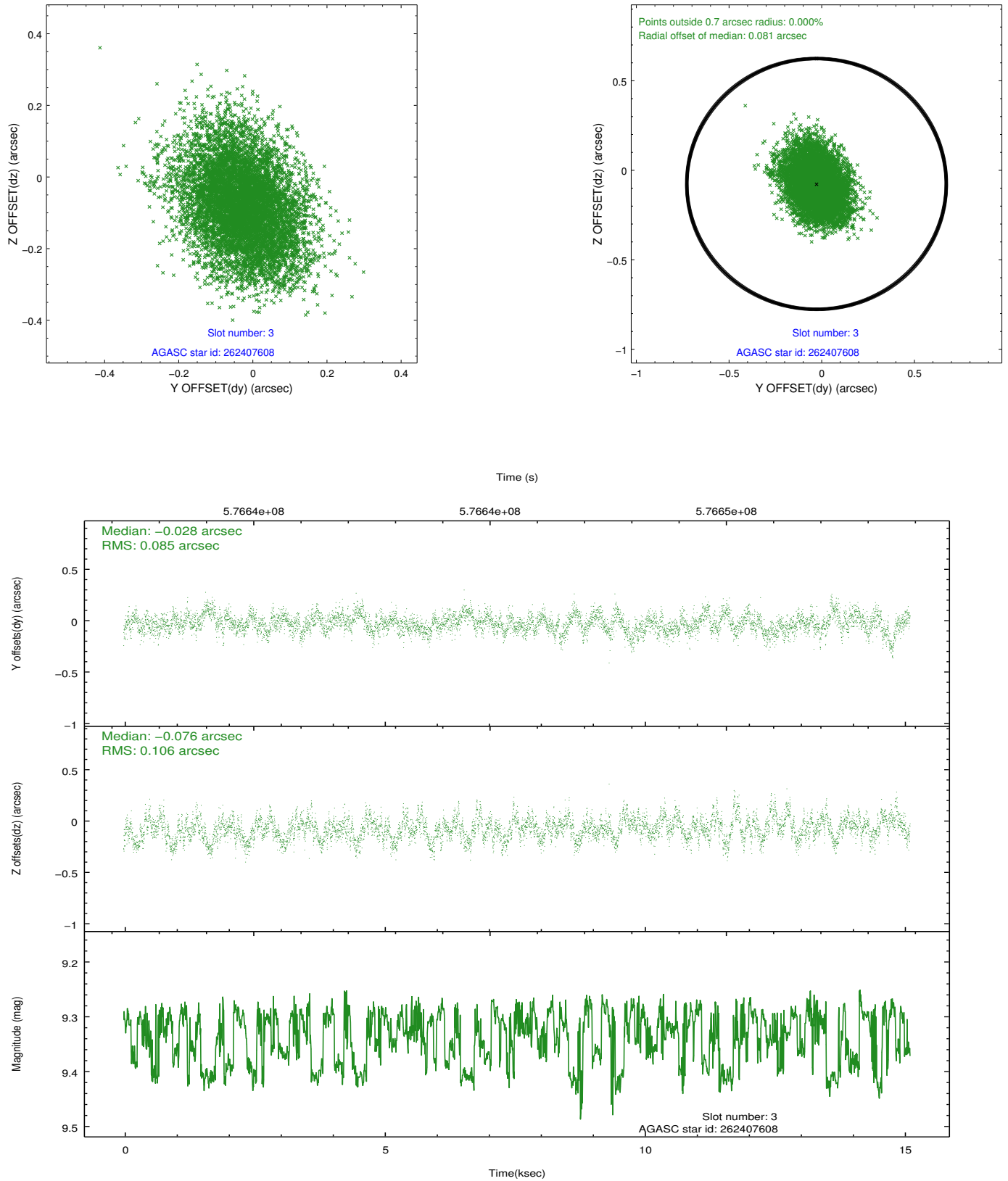


Slot Statistics

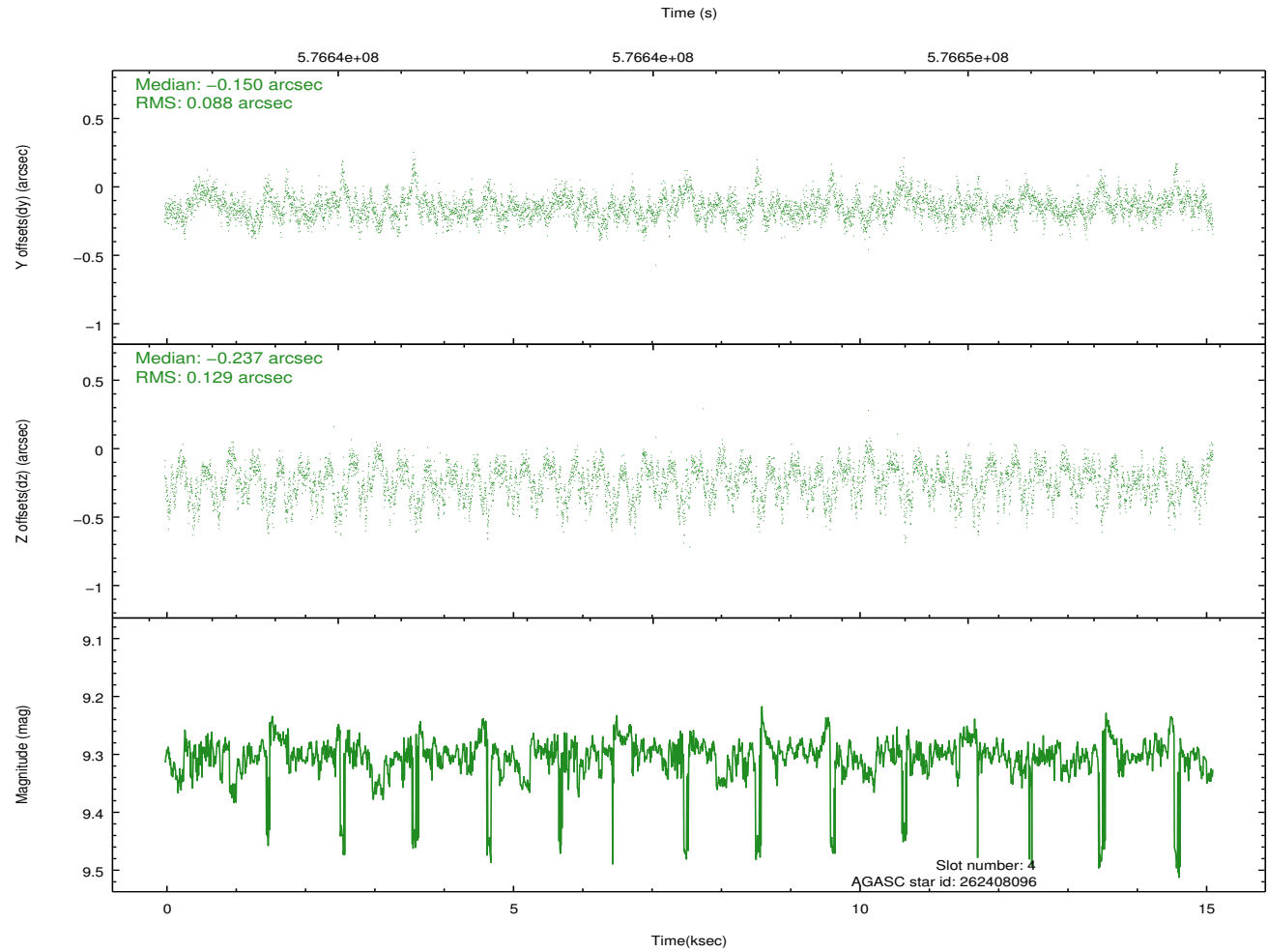
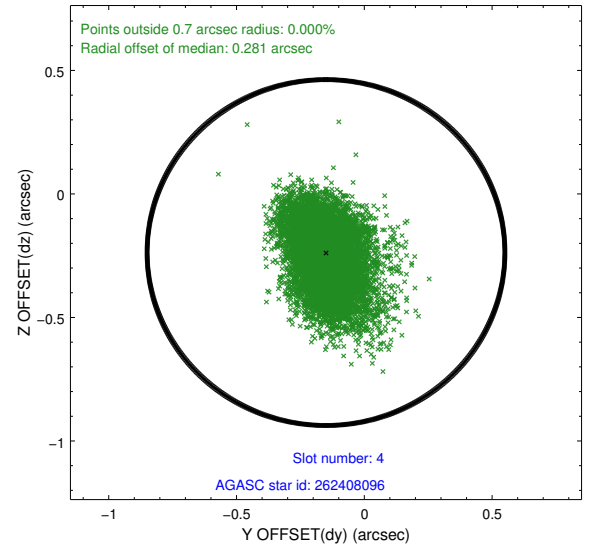
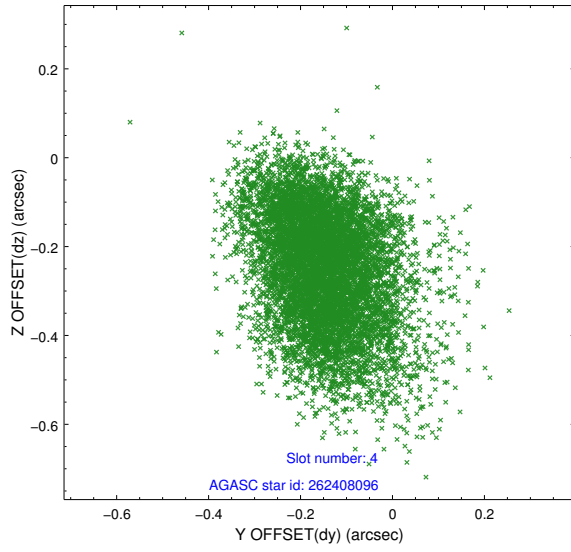
slot	status	used	id	mag	n_pts	med_dy	med_dz	dr1	dr2	ra	dec	mean_y	mean_z
0	FID		ACIS-I-1	7.26	3688	0.188	-0.207	0.007	0.014	0.000000	0.000000	923.29	-1022.90
1	FID		ACIS-I-5	7.25	3687	-0.423	0.106	0.008	0.014	0.000000	0.000000	-1825.40	874.52
2	FID		ACIS-I-6	7.27	3688	0.143	0.172	0.008	0.012	0.000000	0.000000	388.29	1519.58
3	GUIDE	used	262407608	9.33	7365	-0.028	-0.076	0.143	0.240	207.378401	26.435507	-734.33	472.42
4	GUIDE	used	262408096	9.30	7356	-0.150	-0.237	0.162	0.275	207.011678	26.515421	482.45	487.89
5	GUIDE	used	262408512	7.97	7377	0.114	0.255	0.096	0.158	207.800210	27.128796	-1416.68	-2284.21
6	GUIDE	used	262408936	9.65	7371	0.006	0.071	0.195	0.326	207.154731	26.726554	224.24	-362.51
7	GUIDE	used	262409552	8.18	7375	0.051	-0.006	0.125	0.199	206.584269	27.192805	2412.81	-1537.55

2.4 Star Slots

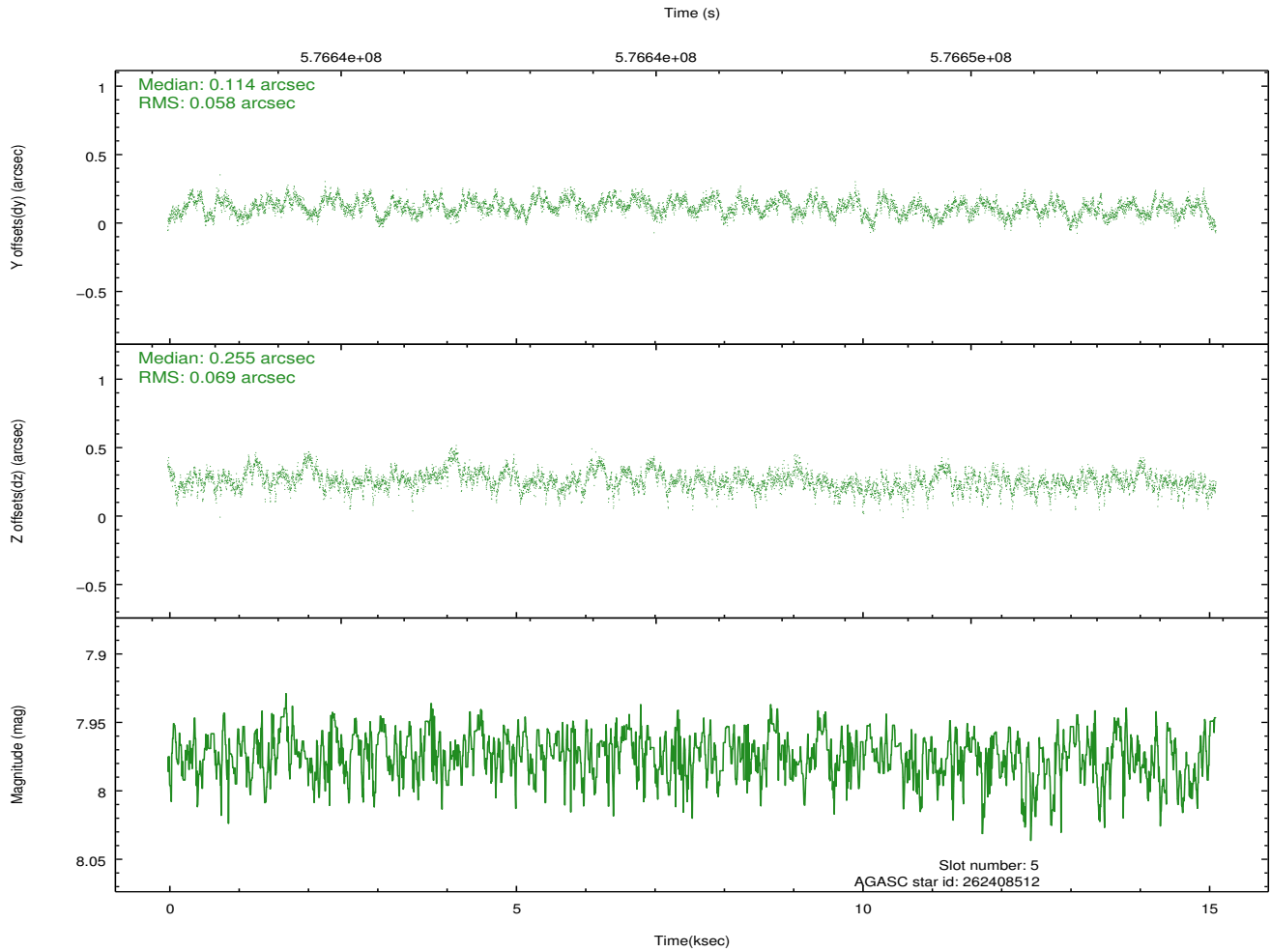
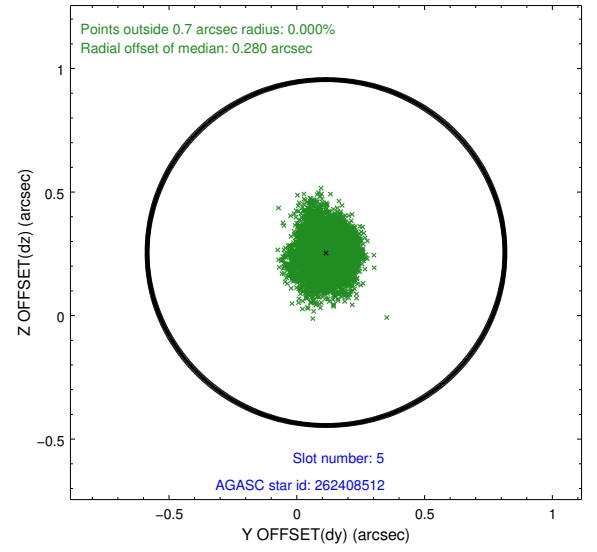
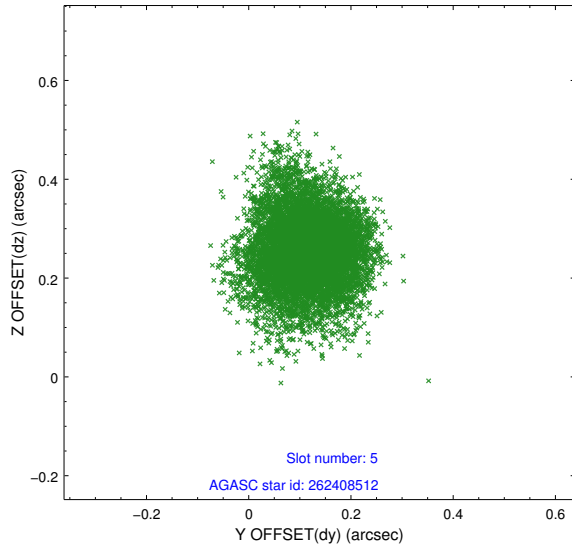
2.4.1 Slot 3



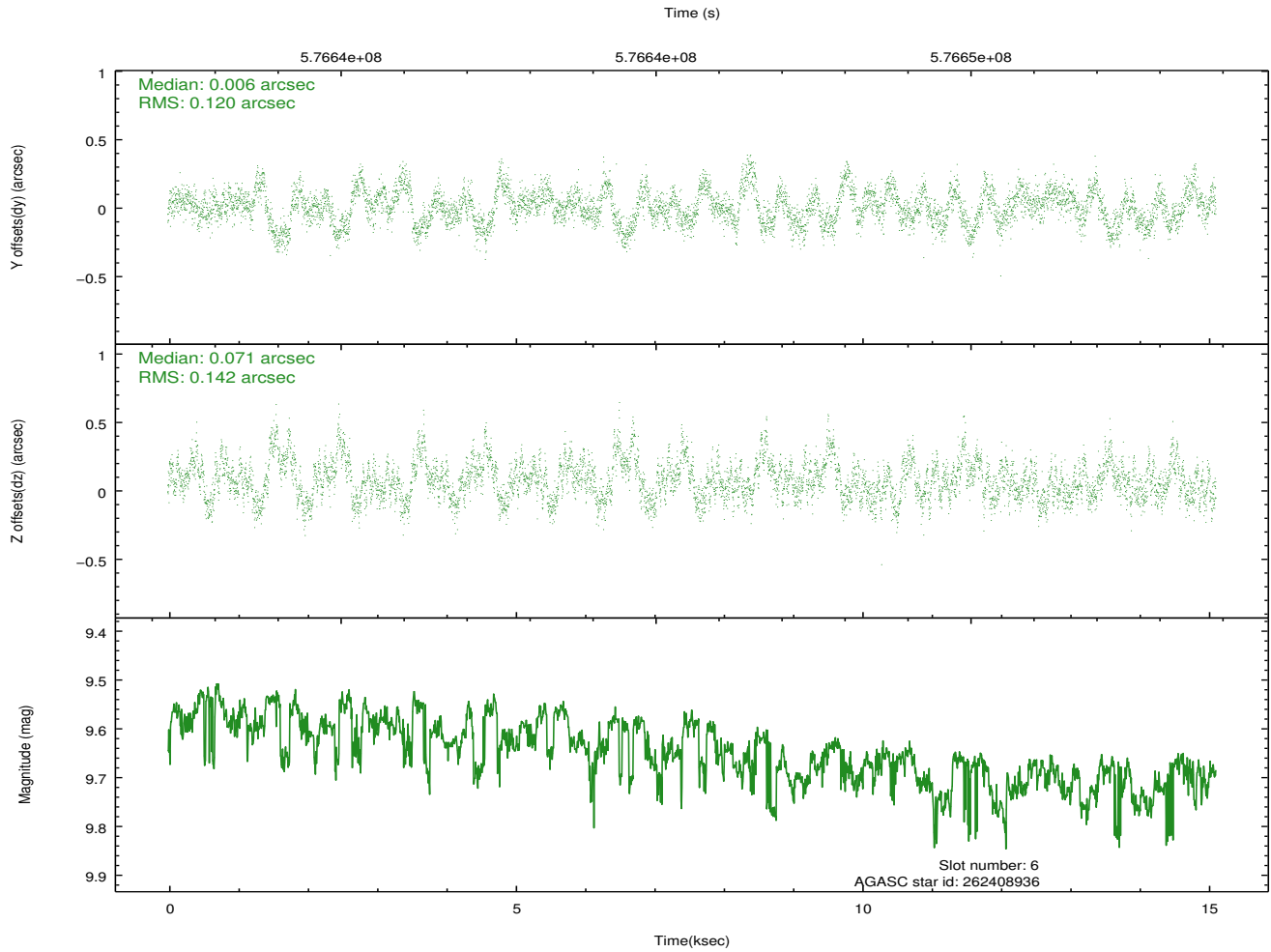
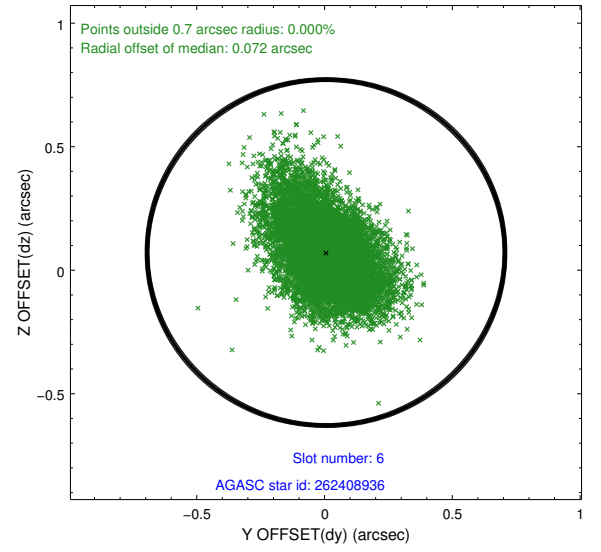
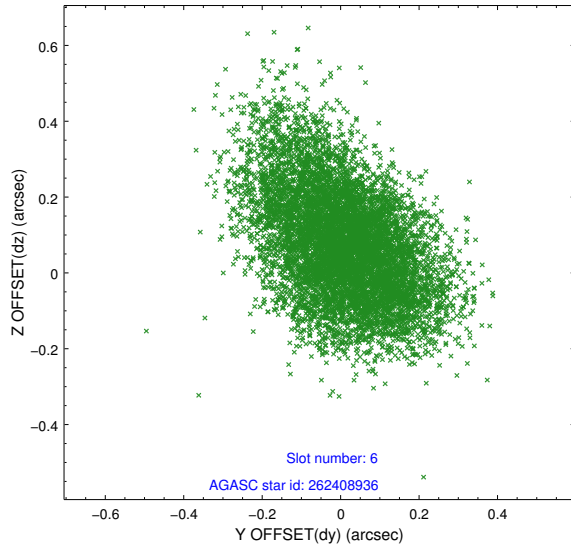
2.4.2 Slot 4



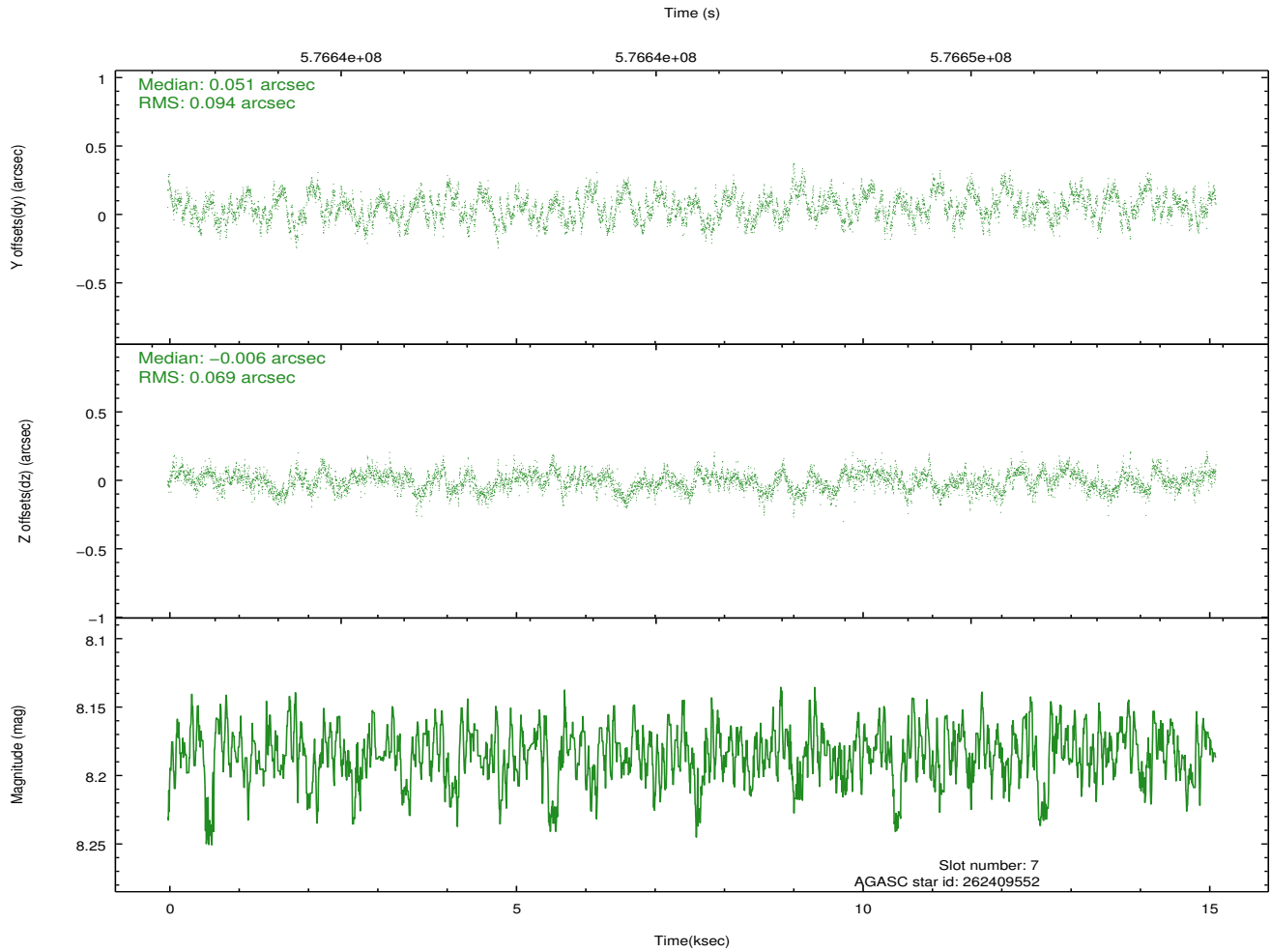
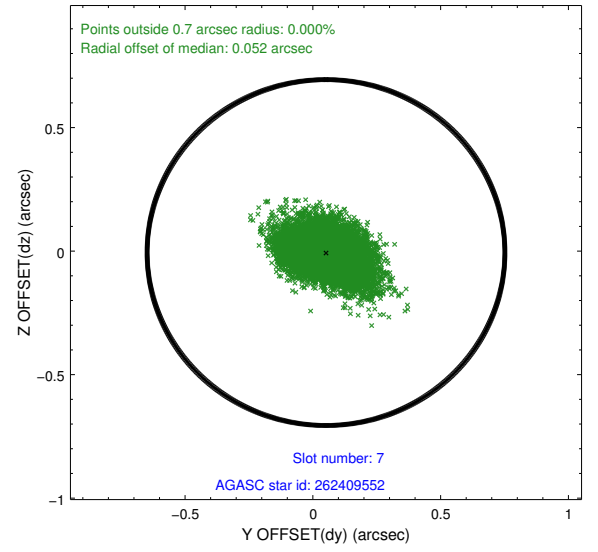
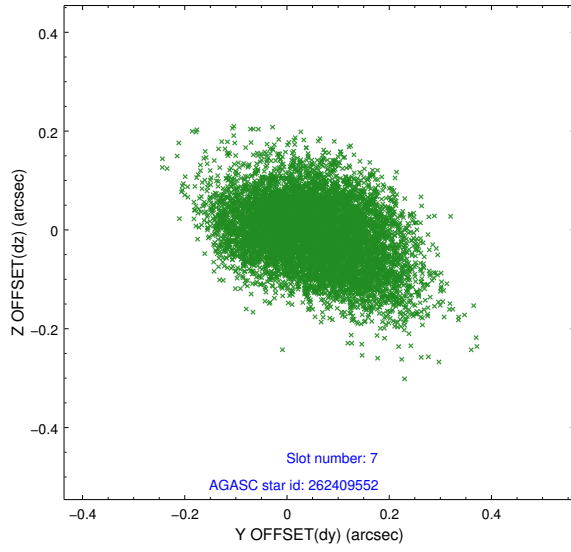
2.4.3 Slot 5



2.4.4 Slot 6

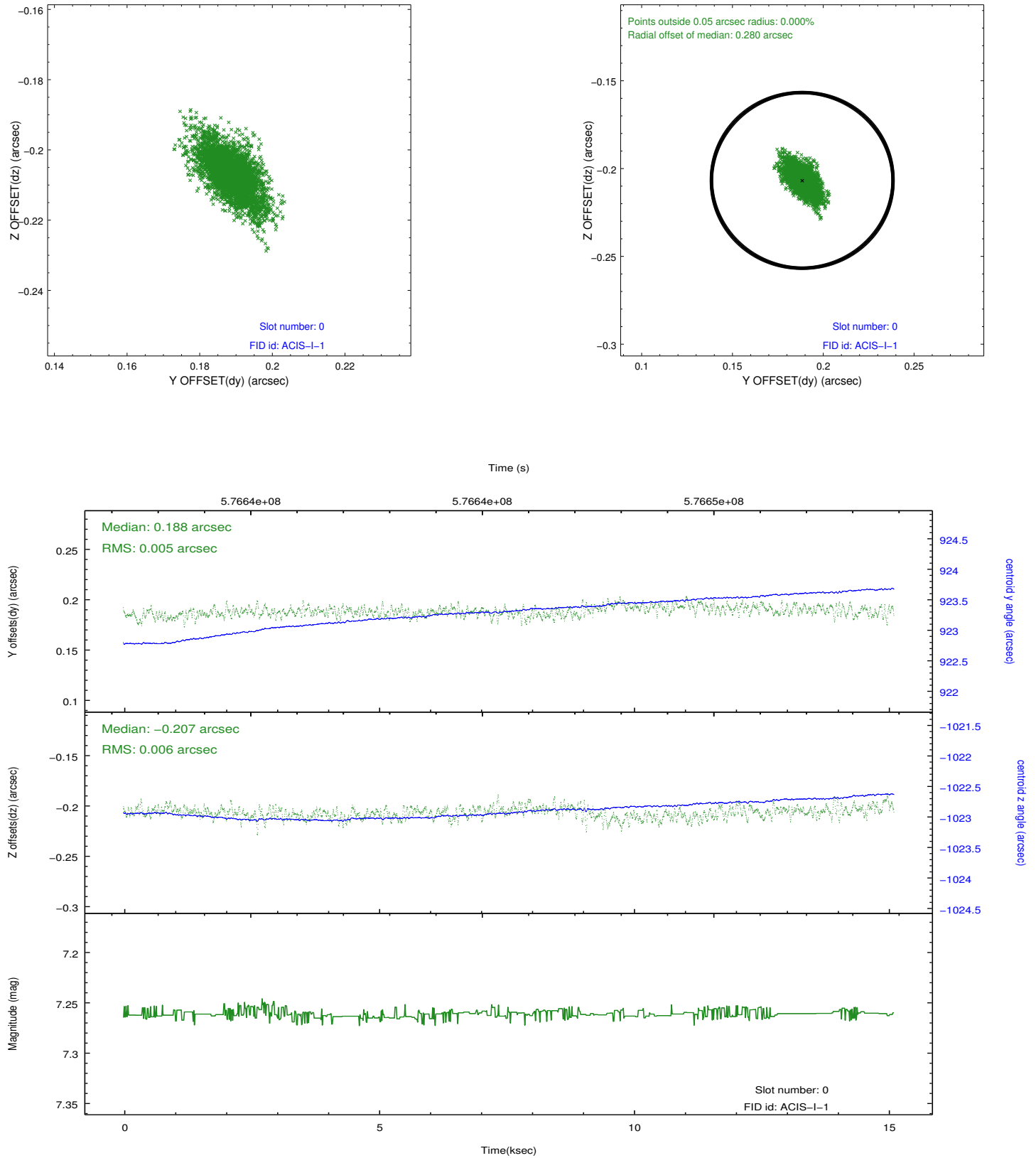


2.4.5 Slot 7

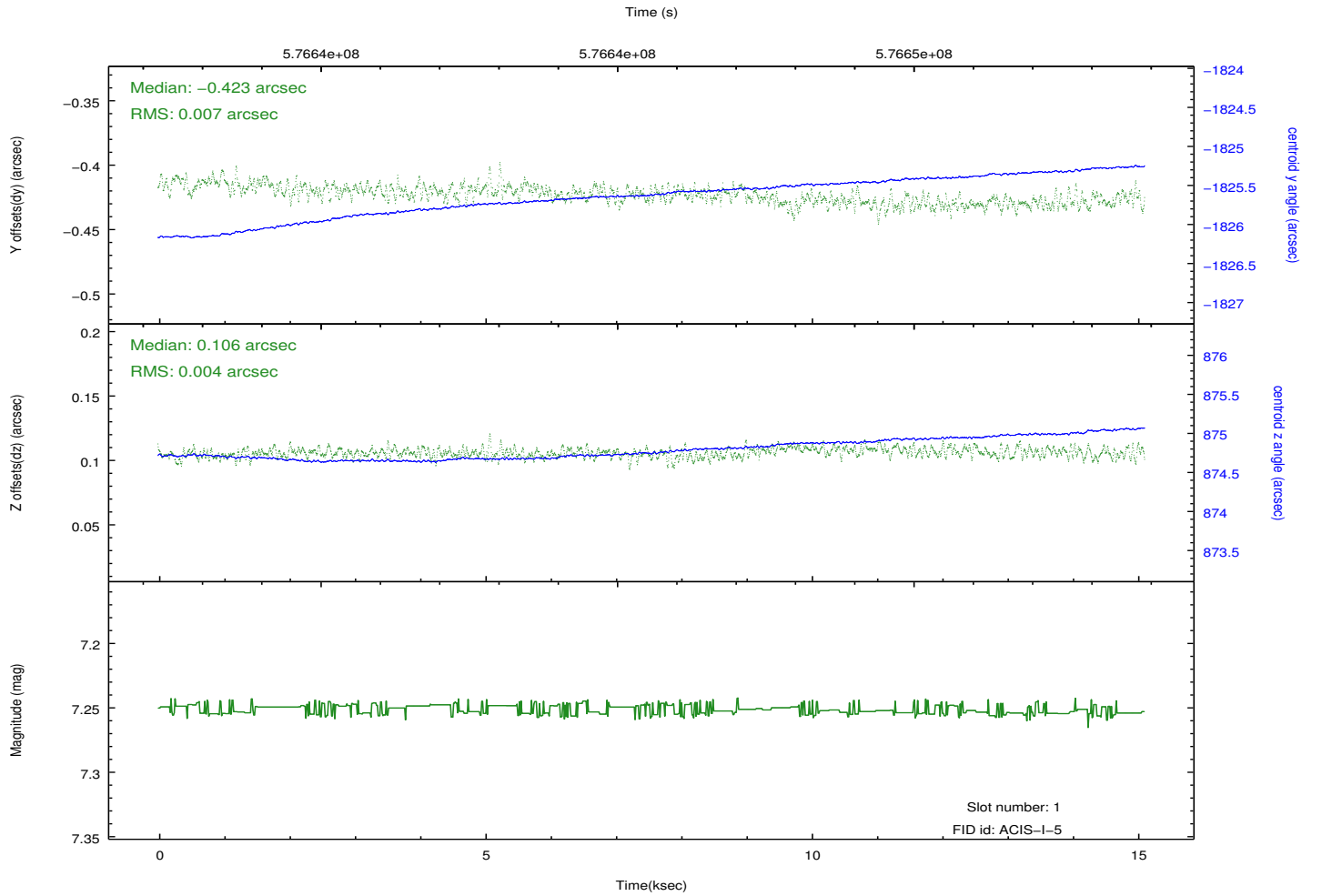
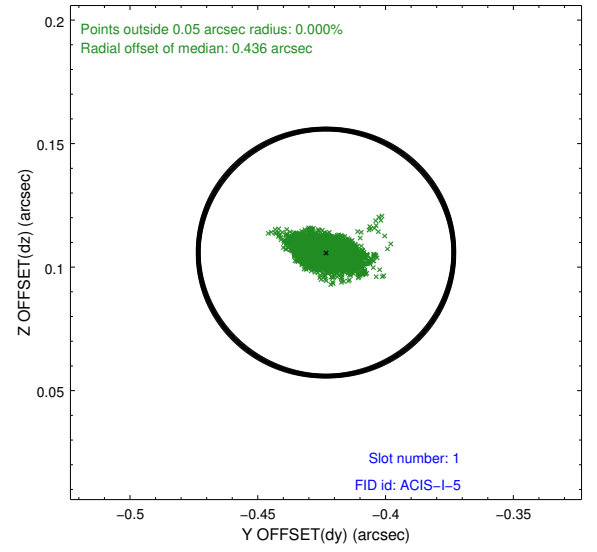
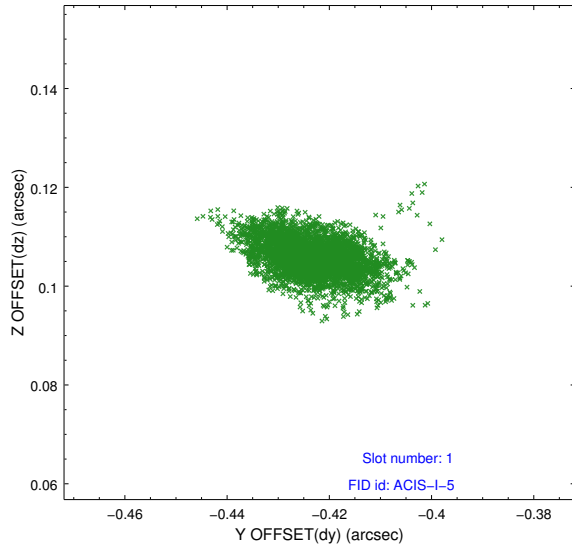


2.5 FID Slots

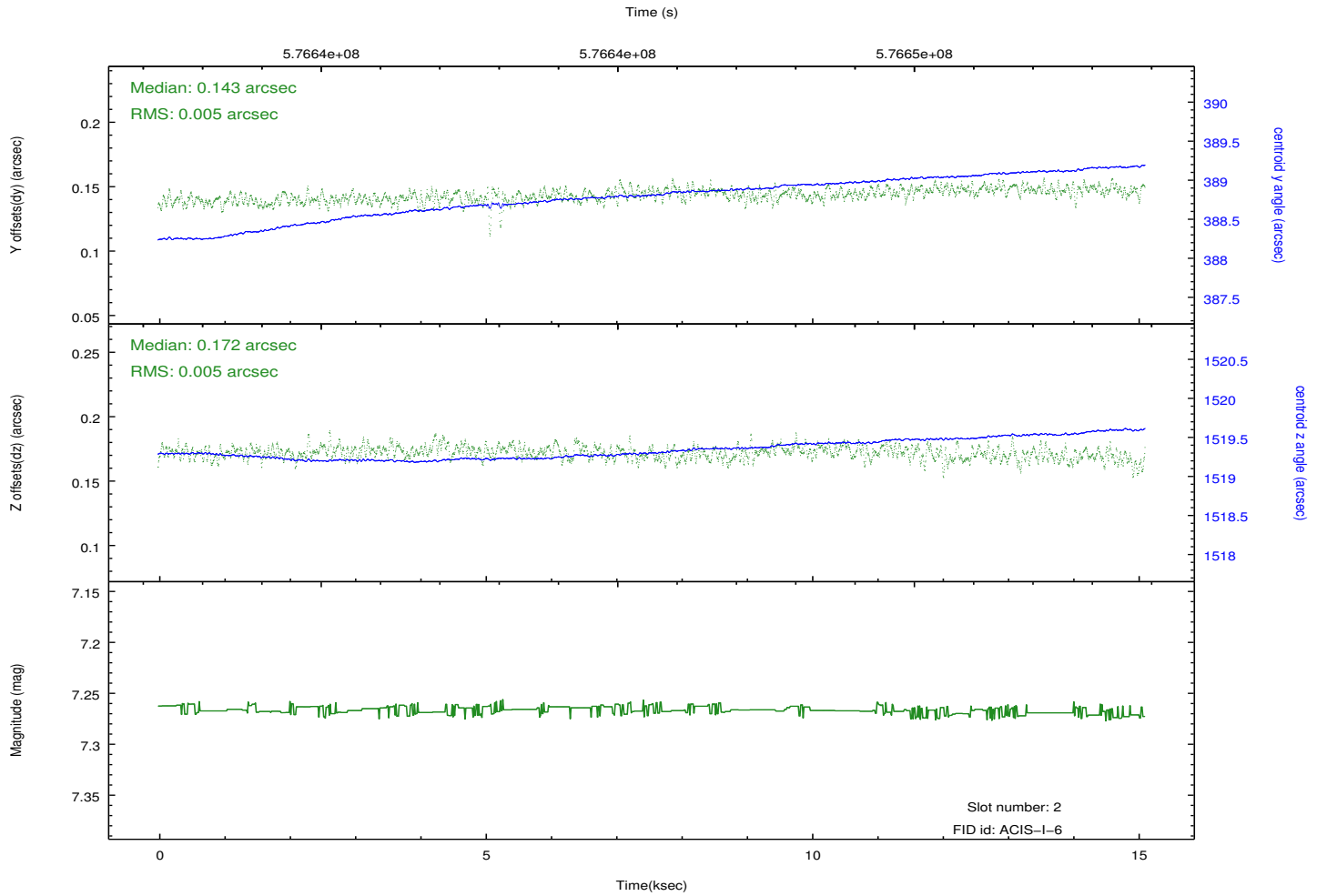
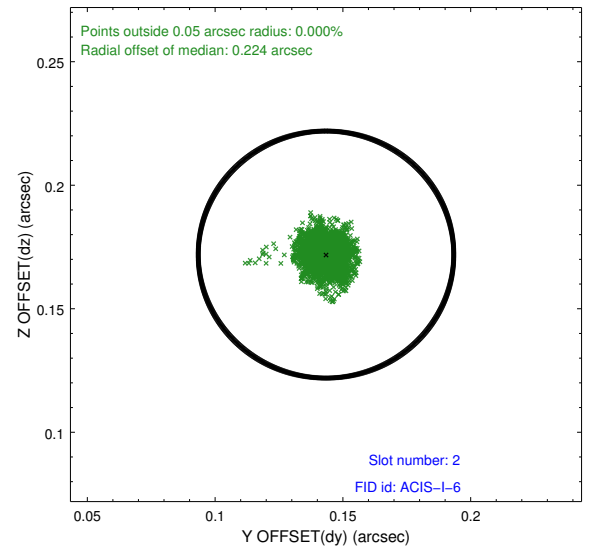
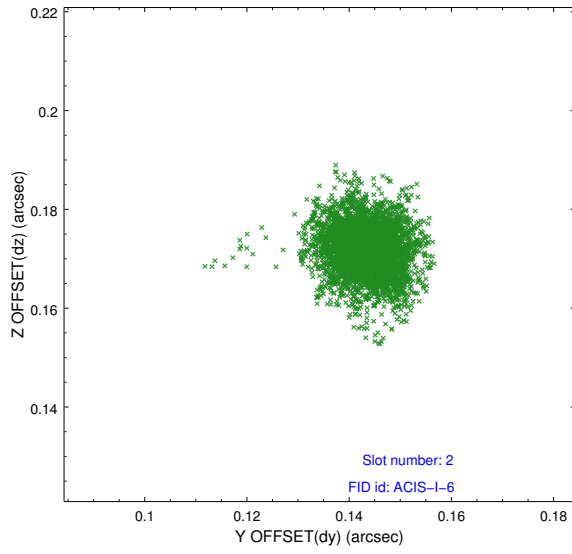
2.5.1 Slot 0



2.5.2 Slot 1



2.5.3 Slot 2



A Summary

A.1 Status

V&V Scientist	Joy Nichols
V&V Date (YYYY-MM-DD)	2016.04.11
V&V Edition	1
V&V Disposition and Status	OK
V&V Charge Time	14.207300109386

A.2 Comments