

V&V Reference Report

L2 ASCDS Version : 10.3.3

Observation 17406 - L2 Version 1
Chandra X-Ray Center

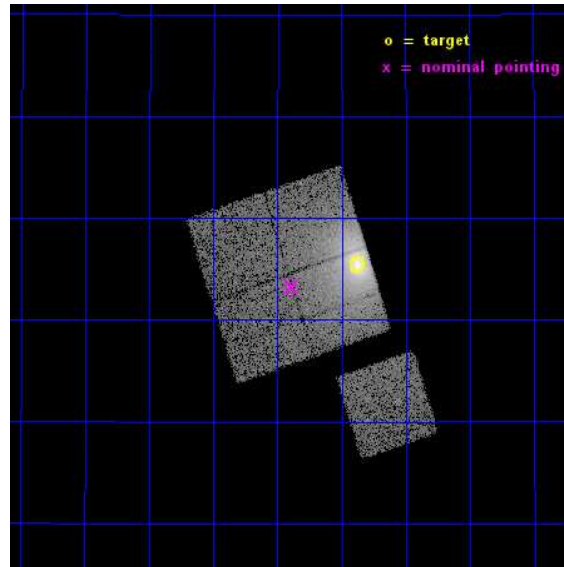
L2 Processing Date : Apr 8 2015

Contents

1	Front	2
2	OBI	3
2.1	OBI	3
2.1.1	Images	3
2.1.2	Bias	3
2.1.3	Parameters	4
2.1.4	Events	4
2.2	Compared Parameters	5
2.3	Aspect	6
2.4	Star Slots	9
2.4.1	Slot 3	9
2.4.2	Slot 4	10
2.4.3	Slot 5	11
2.4.4	Slot 6	12
2.4.5	Slot 7	13
2.5	FID Slots	14
2.5.1	Slot 0	14
2.5.2	Slot 1	15
2.5.3	Slot 2	16
A	Summary	17
A.1	Status	17
A.2	Comments	17

1 Front

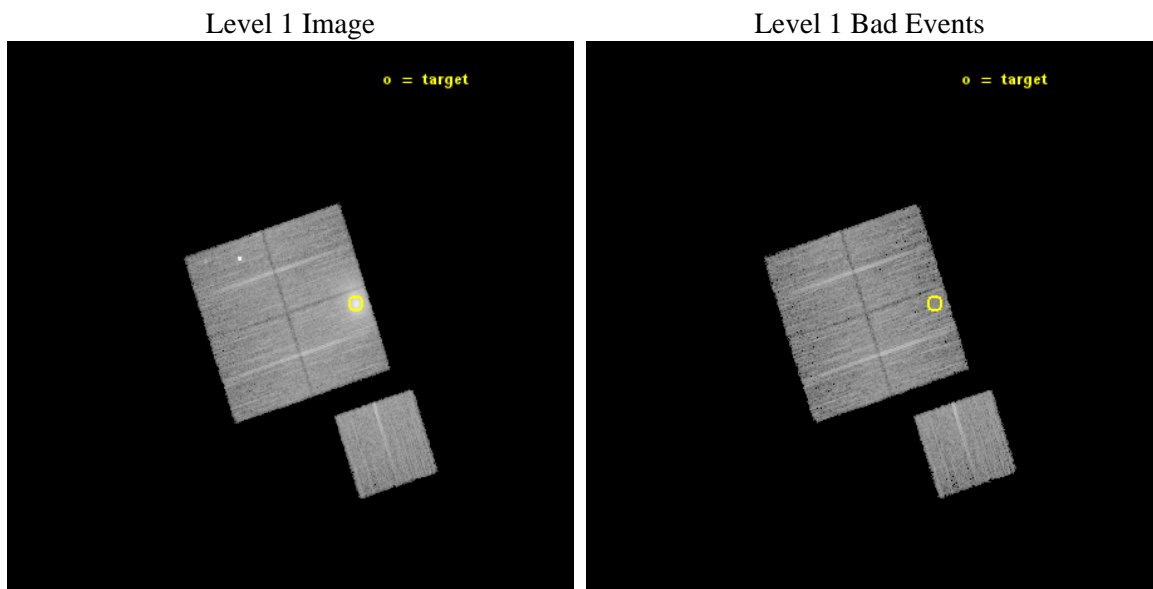
seq_num	890106	Sequence number
obs_id	17406	Observation id
title	AO-16 Calibration Observations of A1795	Proposal title
observer	Dr. CXC Calibration	Principal investigator
object	A1795	Source name
dtcycle	0	
cycle	P	events from which exps? Prim/Second/Both
ra_targ	207.219583	Observer's specified target RA [deg]
dec_targ	26.590833	Observer's specified target Dec [deg]
ra_nom	207.34804565997	Nominal RA [deg]
dec_nom	26.554483709211	Nominal Dec [deg]
roll_nom	161.82785482564	Nominal Roll [deg]
revision	1	Processing version of data
ontime	14885.779488802	Sum of GTIs [s]
livetime	14691.285821029	Livetime [s]
ontime0	14885.697429061	Sum of GTIs [s]
ontime1	14885.738469005	Sum of GTIs [s]
ontime2	14885.779488802	Sum of GTIs [s]
ontime3	14885.820549011	Sum of GTIs [s]
ontime6	14882.515318871	Sum of GTIs [s]
l2events	101343	Number of level 2 events



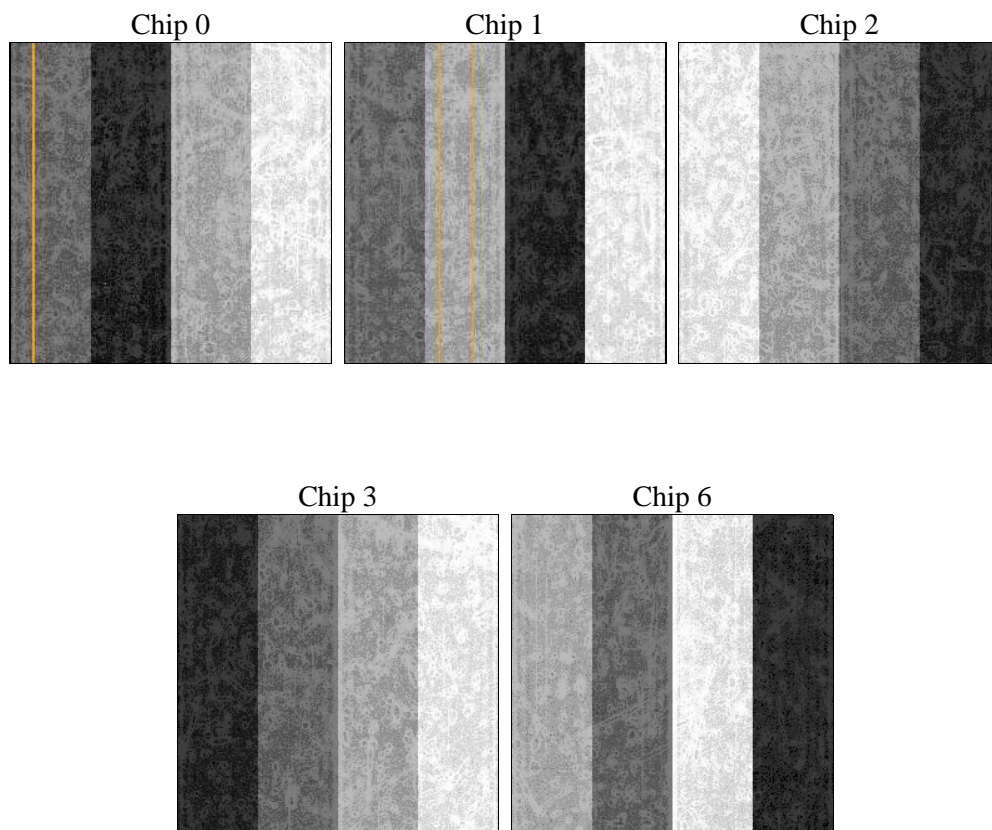
2 OBI

2.1 OBI

2.1.1 Images



2.1.2 Bias



2.1.3 Parameters

obi_num	0	Obi number	sched_exp_time	15109.420000	[s] Scheduled observation exposure time
ascdsver	10.3.3	Processing system revision	ontime	14885.779488802	Sum of GTIs [s]
caldsver	4.6.7	 	ontime0	14885.697429061	Sum of GTIs [s]
date	2015-04-09T02:54:55	Date and time of file creation	ontime1	14885.738469005	Sum of GTIs [s]
revision	1	Processing version of data	ontime2	14885.779488802	Sum of GTIs [s]
			ontime3	14885.820549011	Sum of GTIs [s]
			ontime6	14882.515318871	Sum of GTIs [s]
			l1events	435376	Number of level 1 events

2.1.4 Events

	ccd 0	ccd 1	ccd 2	ccd 3	ccd 6
level 1 events	83084	73950	132513	71115	74714
rejected events	59430	60013	69437	62554	65983
rejected %	71%	81%	52%	87%	88%

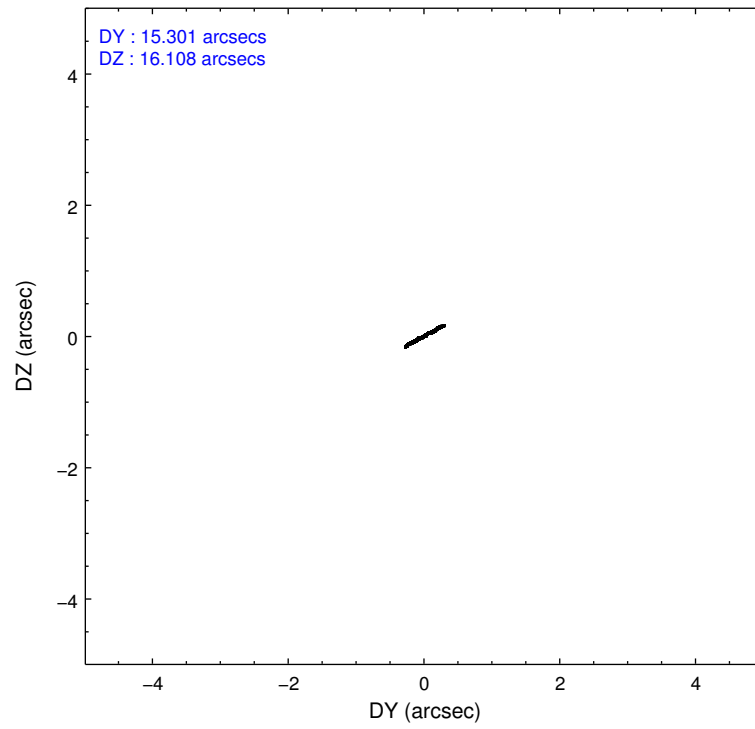
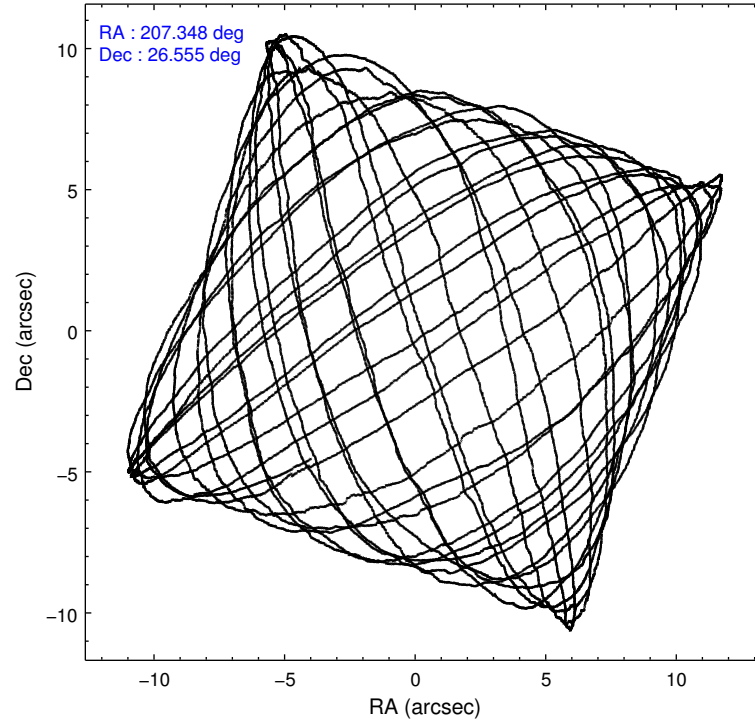
	ccd 0	ccd 1	ccd 2	ccd 3	ccd 6
grade 0 events	14806	7856	46496	3408	2907
	17%	10%	35%	4%	3%
grade 1 events	70	55	177	39	34
	0%	0%	0%	0%	0%
grade 2 events	3873	2237	7884	1678	2107
	4%	3%	5%	2%	2%
grade 3 events	1352	793	2764	872	765
	1%	1%	2%	1%	1%
grade 4 events	1361	874	2677	881	754
	1%	1%	2%	1%	1%
grade 5 events	3200	3282	3160	3697	3238
	3%	4%	2%	5%	4%
grade 6 events	2271	2185	3286	1724	2201
	2%	2%	2%	2%	2%
grade 7 events	56151	56668	66069	58816	62708
	67%	76%	49%	82%	83%

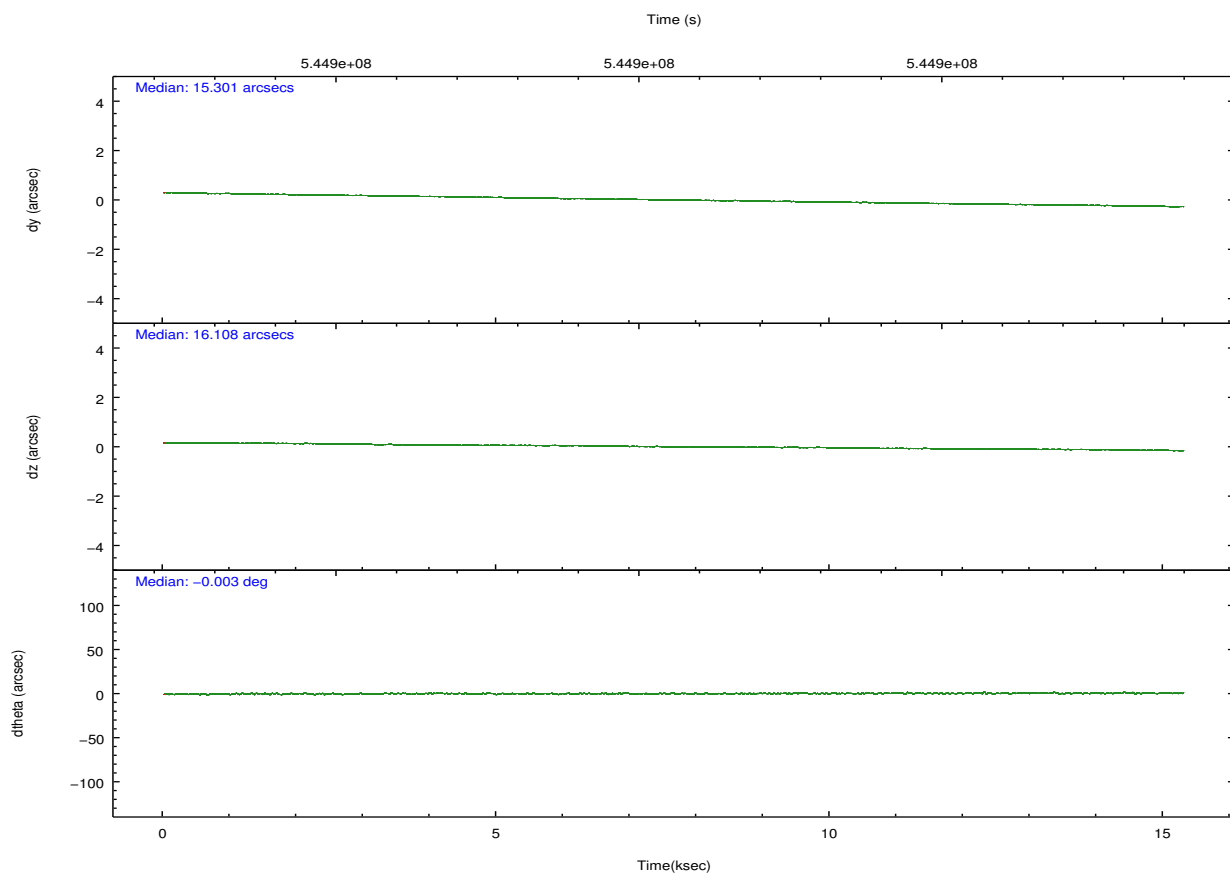
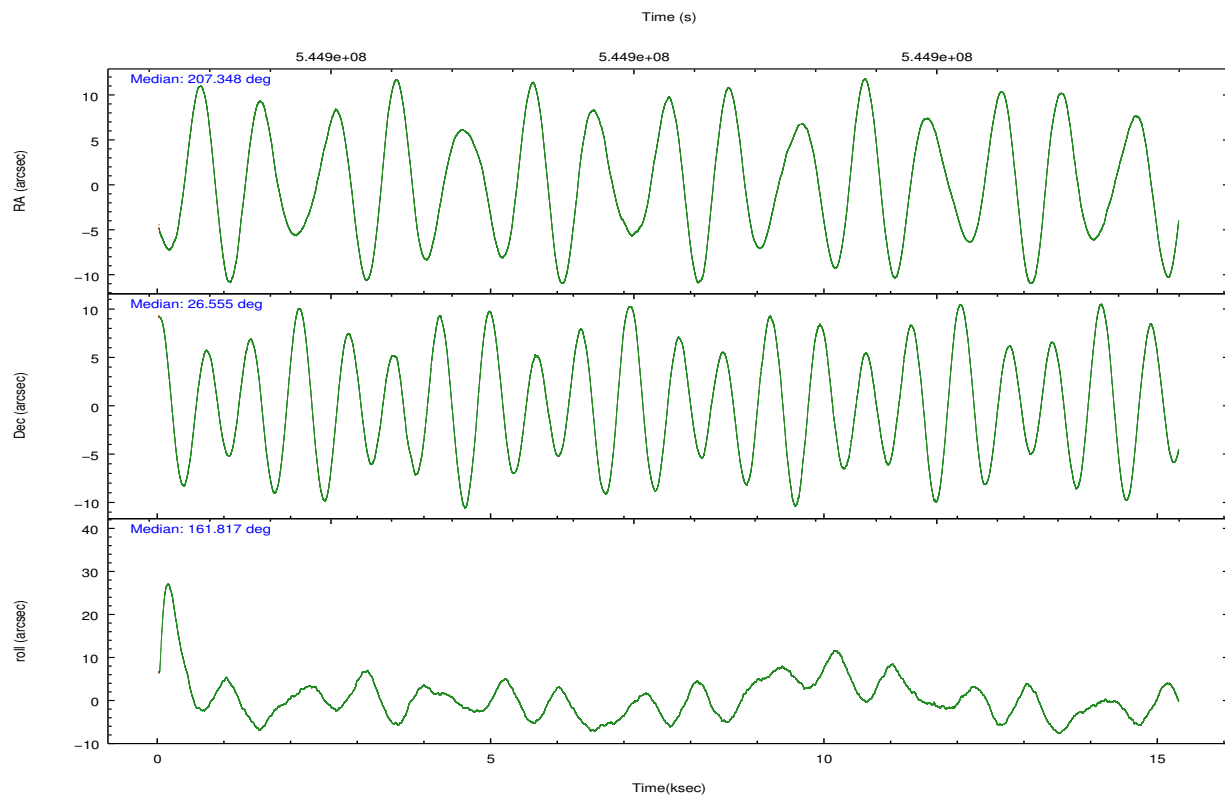
2.2 Compared Parameters

Parameter	Planned	Actual
Instrument	ACIS	ACIS
Detector	ACIS-01236	ACIS-01236
Grating	NONE	NONE
Data mode	VFAINT	VFAINT
Observation mode	POINTING	POINTING
[deg] Pointing RA	207.378263	207.3480456599679
[deg] Pointing Dec	26.560246	26.55448370921144
[deg] Pointing Roll	161.605675	161.8278548256357
[s] Window start time (MET)	544233667.184000	544233667.184000
[s] Window stop time (MET)	546739267.184000	546739267.184000
[mm] SIM focus pos	-0.782348	-0.7809083437167272
[mm] SIM defocus	0	0.001439871863259334
[mm] SIM translation stage pos	-231.837463	-231.8374710109429
[mm] SIM translation stage offset	-1.755	-1.754981991986767
[s] Observation start time (MET)	544893139.184000	544892763.4735
Observation start date	2015-04-08T15:11:12	2015-04-08T15:06:03
[s] Observation end time (MET)	544908249.184000	544908484.9243799
Observation end date	2015-04-08T19:23:02	2015-04-08T19:28:04
Read mode	TIMED	TIMED

Parameter	Planned	Actual
Obspar format version number	7	7
Obspar file type	PREDICTED	ACTUAL
Obspar update status	NONE	UPDATED
Number of optional ACIS chips dropped	0	0
On-chip summing requested	N	N
Subarray requested	NONE	NONE
Alternating exposures requested	N	N
[s] Primary exposure time	0.000000	3.1

2.3 Aspect



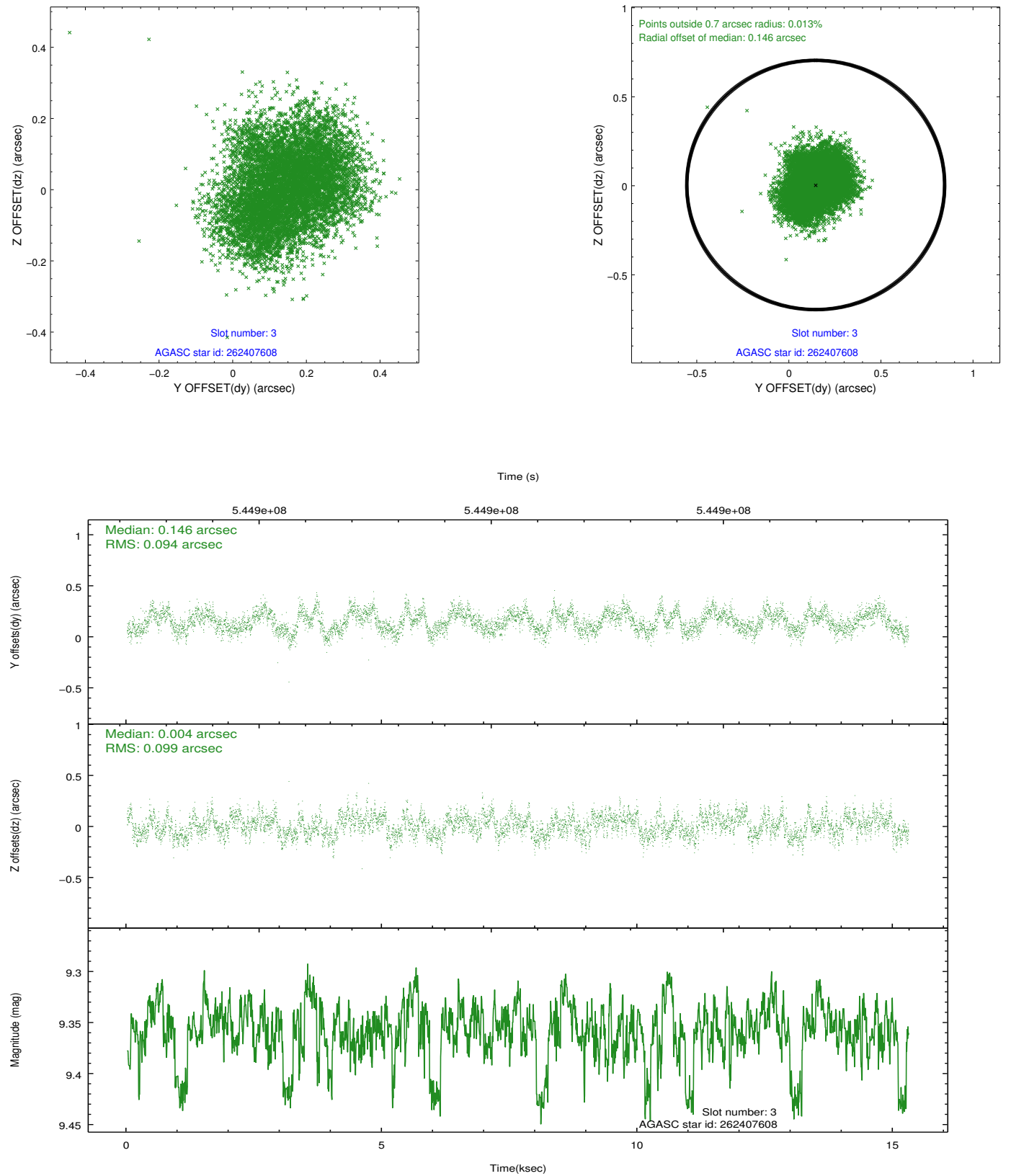


Slot Statistics

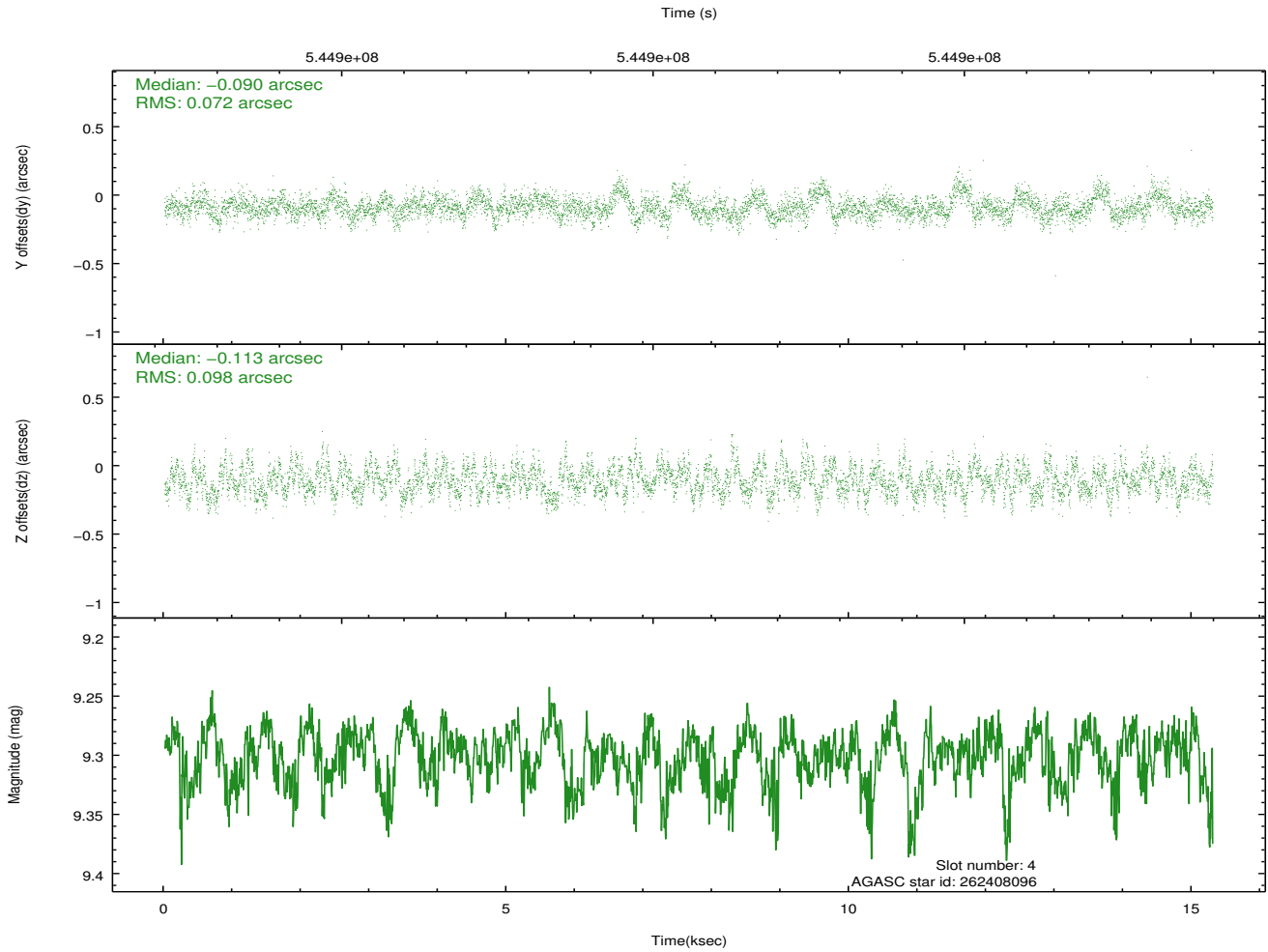
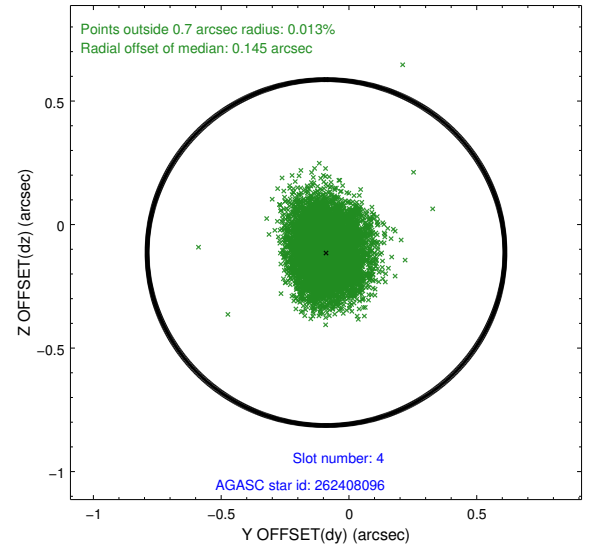
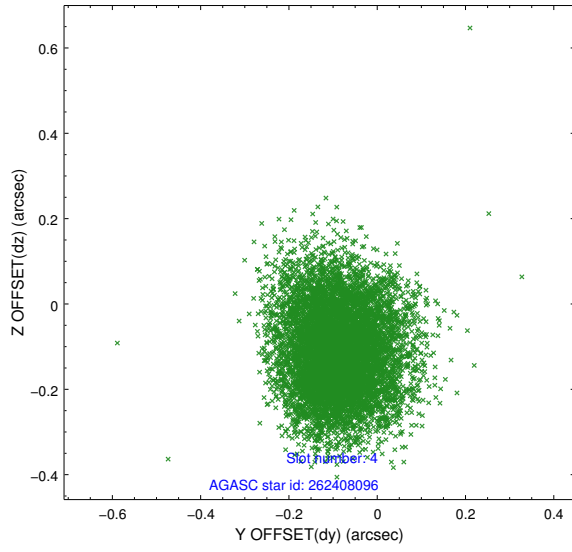
slot	status	used	id	mag	n_pts	med_dy	med_dz	dr1	dr2	ra	dec	mean_y	mean_z
0	FID		ACIS-I-1	7.28	3731	0.127	-0.059	0.007	0.013	0.000000	0.000000	924.26	-875.73
1	FID		ACIS-I-5	7.28	3731	-0.330	0.098	0.006	0.010	0.000000	0.000000	-1824.18	1021.71
2	FID		ACIS-I-6	7.28	3731	0.111	0.031	0.008	0.013	0.000000	0.000000	389.42	1666.52
3	GUIDE	used	262407608	9.36	7461	0.146	0.004	0.149	0.226	207.378401	26.435507	-142.12	426.13
4	GUIDE	used	262408096	9.30	7459	-0.090	-0.113	0.130	0.210	207.011678	26.515421	1070.69	524.41
5	GUIDE	used	262408512	7.99	7460	-0.010	0.230	0.087	0.139	207.800210	27.128796	-635.57	-2370.61
6	GUIDE	used	262408936	9.67	7455	0.001	0.071	0.160	0.252	207.154731	26.726554	870.94	-341.76
7	GUIDE	used	262411960	9.66	7454	-0.053	-0.198	0.142	0.230	207.327895	25.881727	-616.21	2369.12

2.4 Star Slots

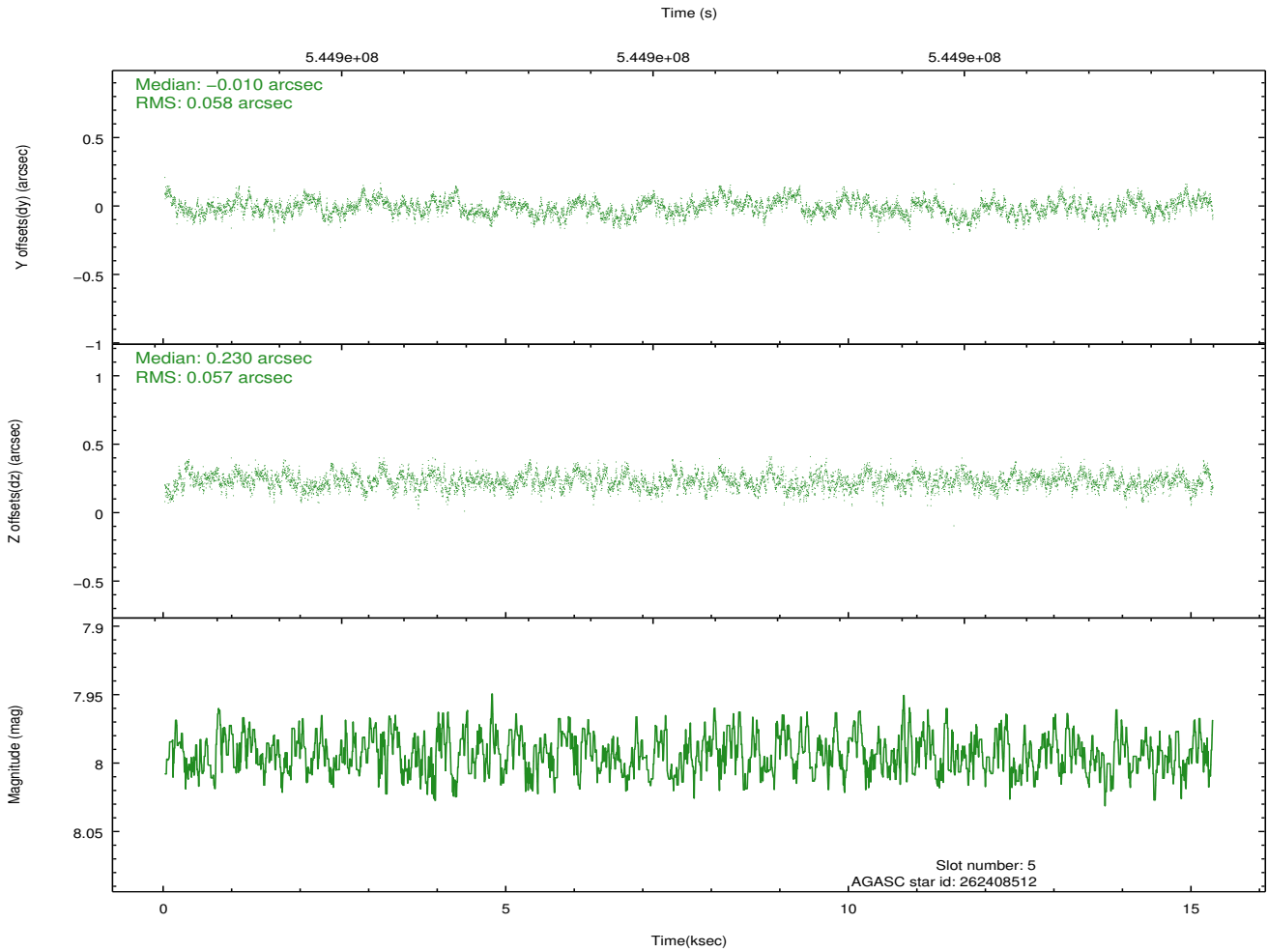
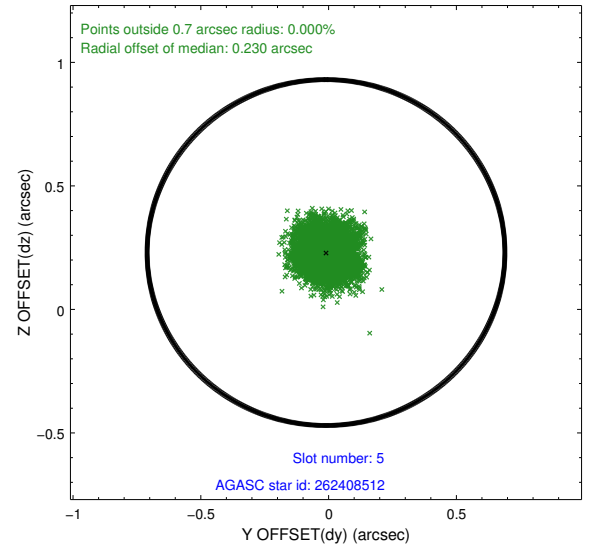
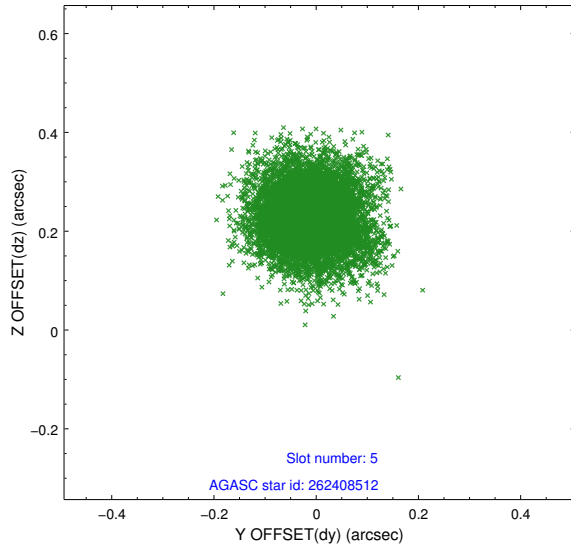
2.4.1 Slot 3



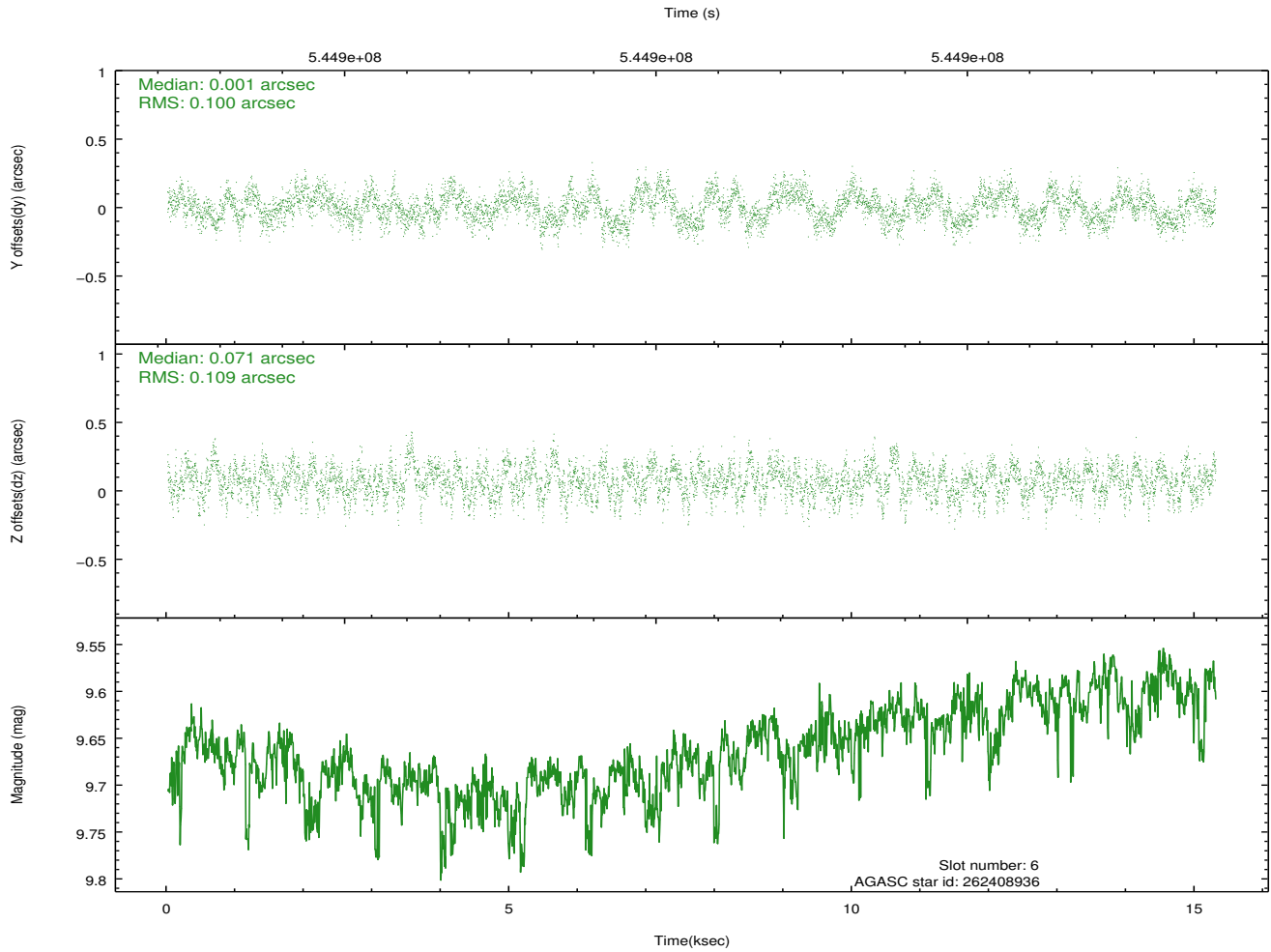
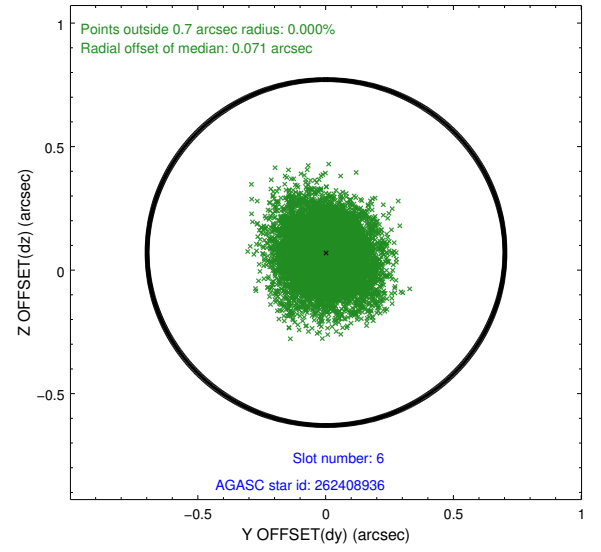
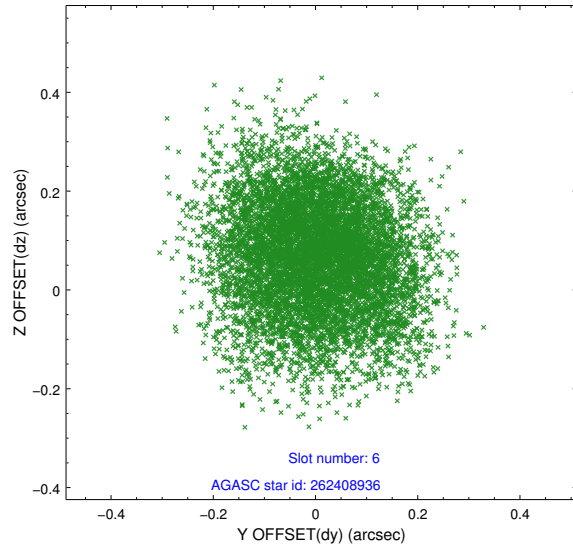
2.4.2 Slot 4



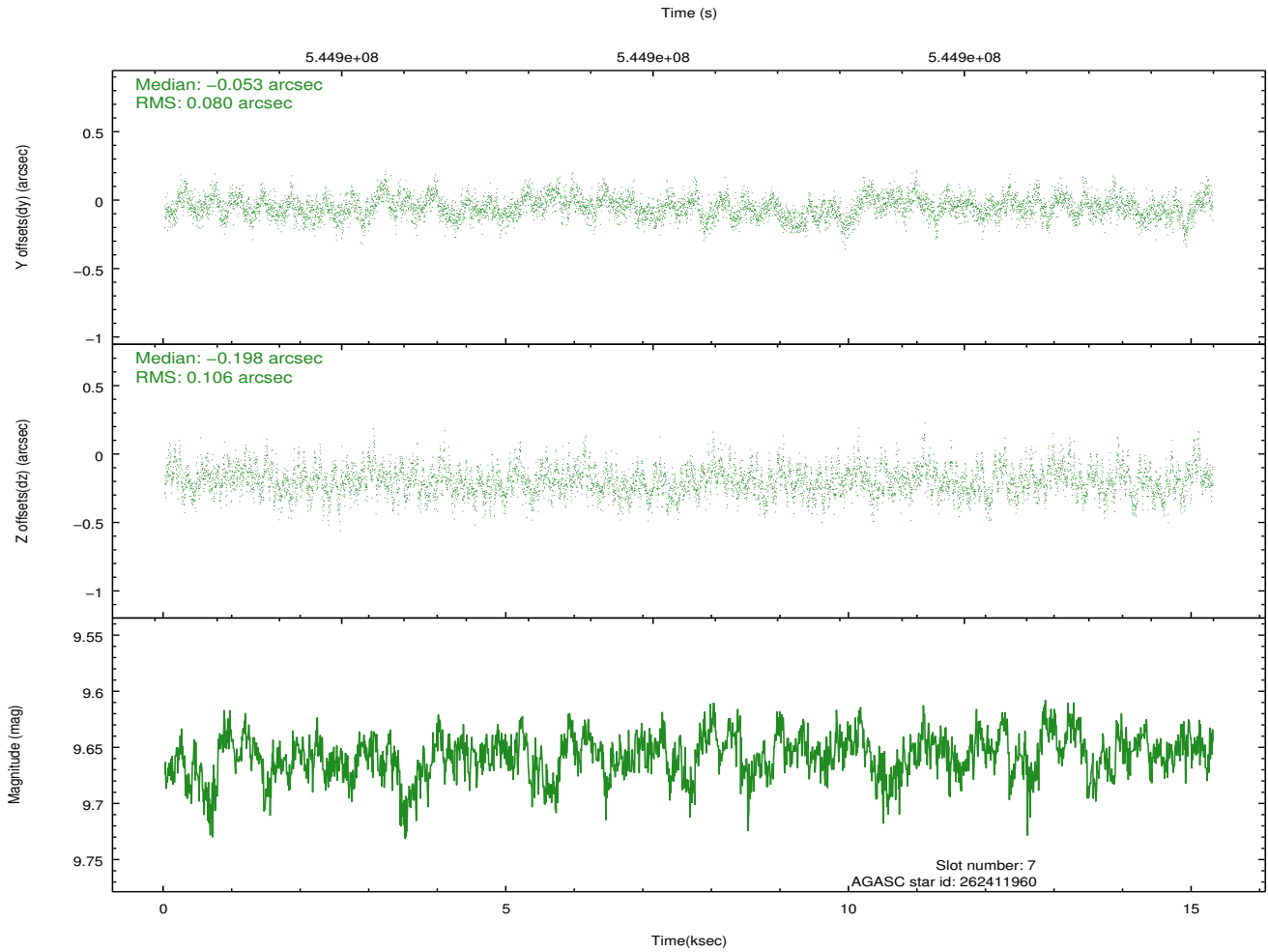
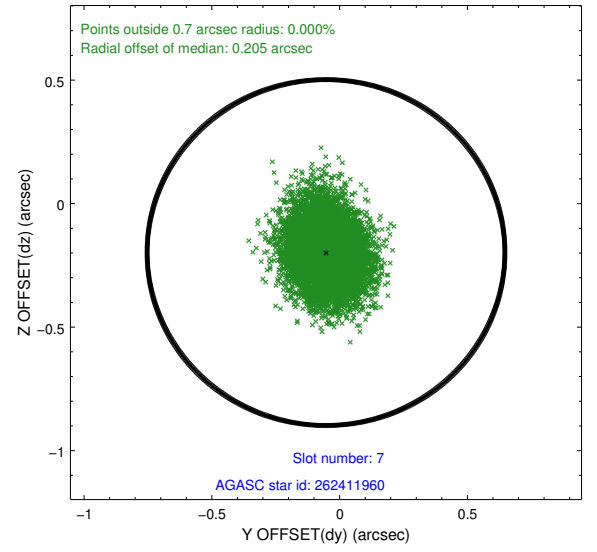
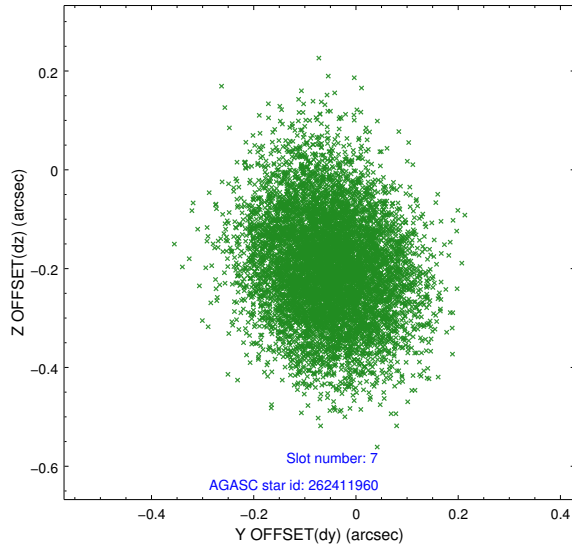
2.4.3 Slot 5



2.4.4 Slot 6

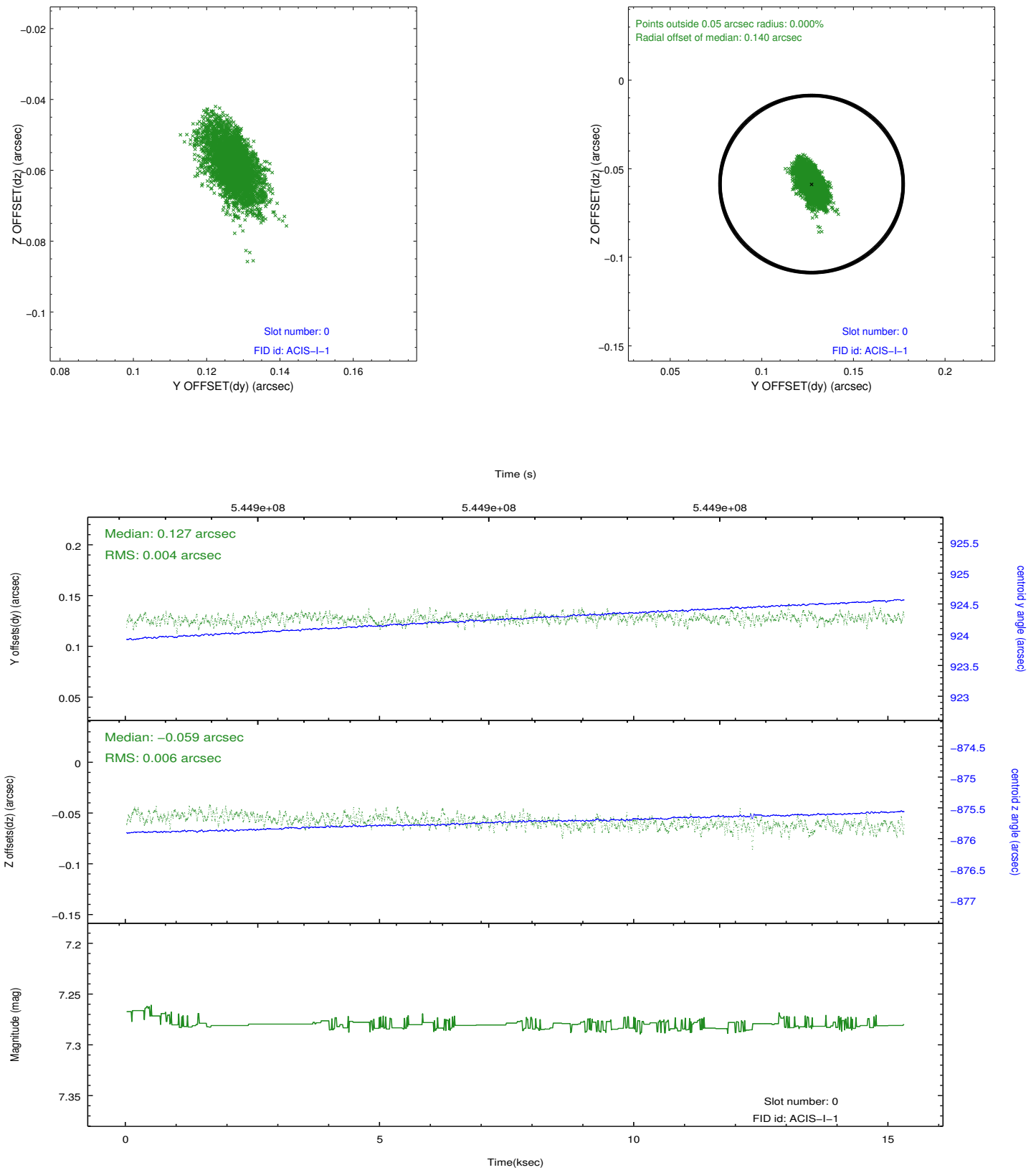


2.4.5 Slot 7

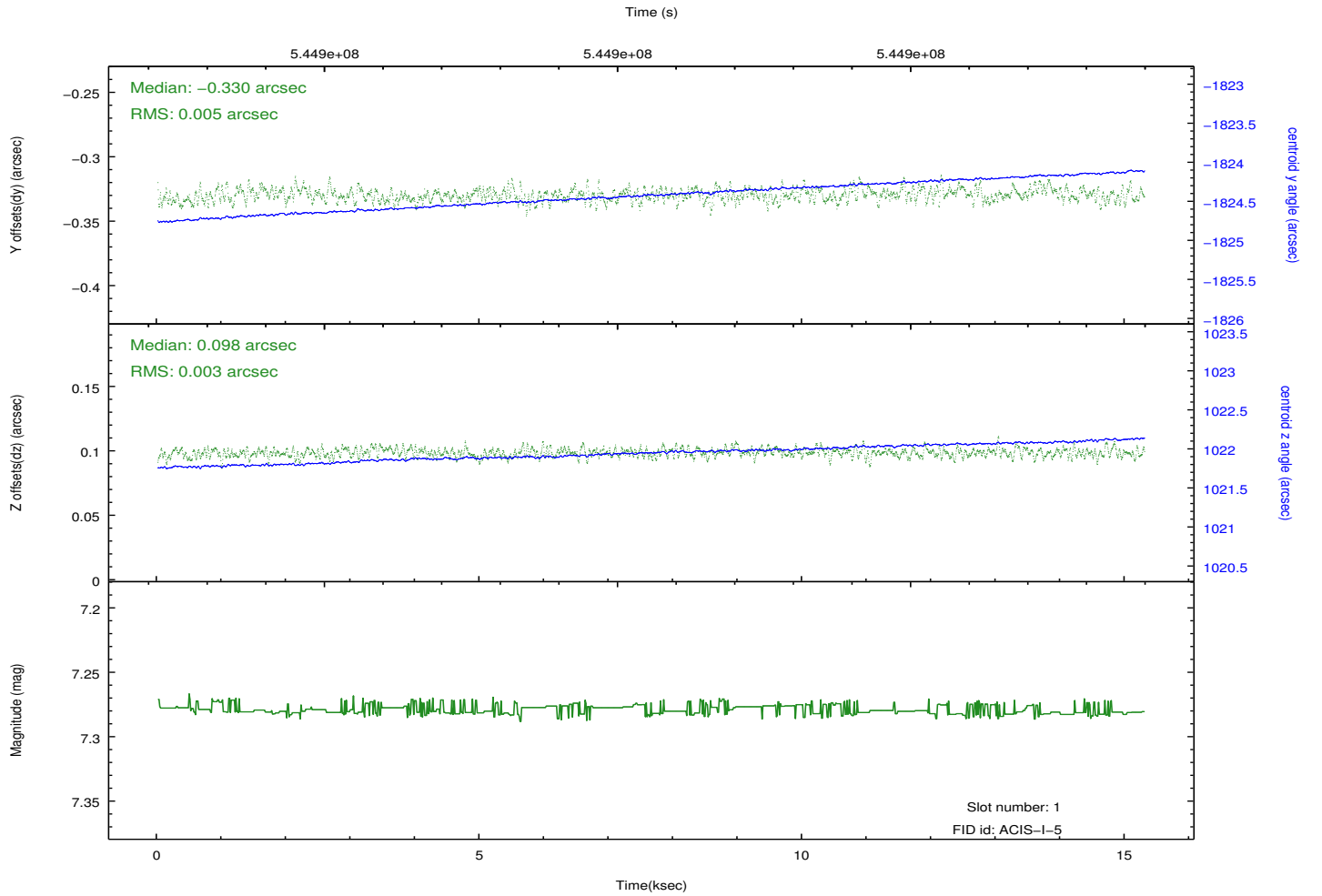
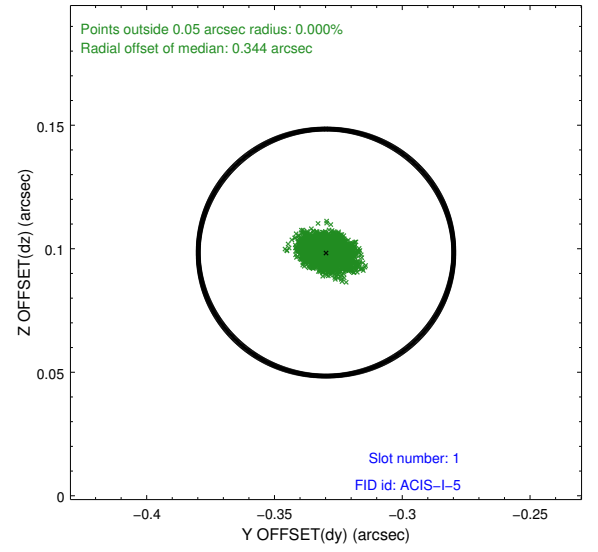
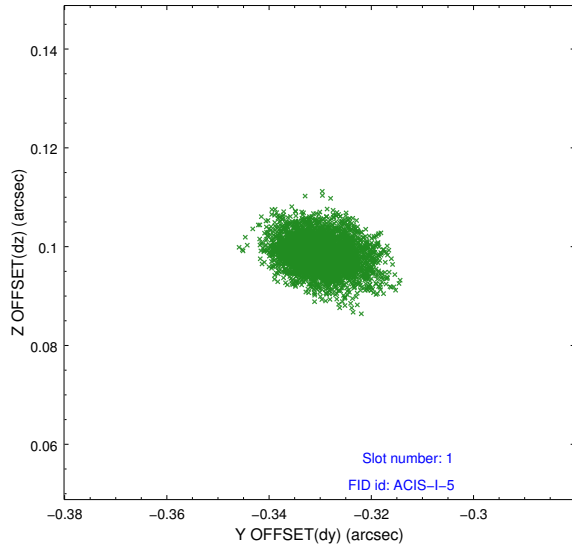


2.5 FID Slots

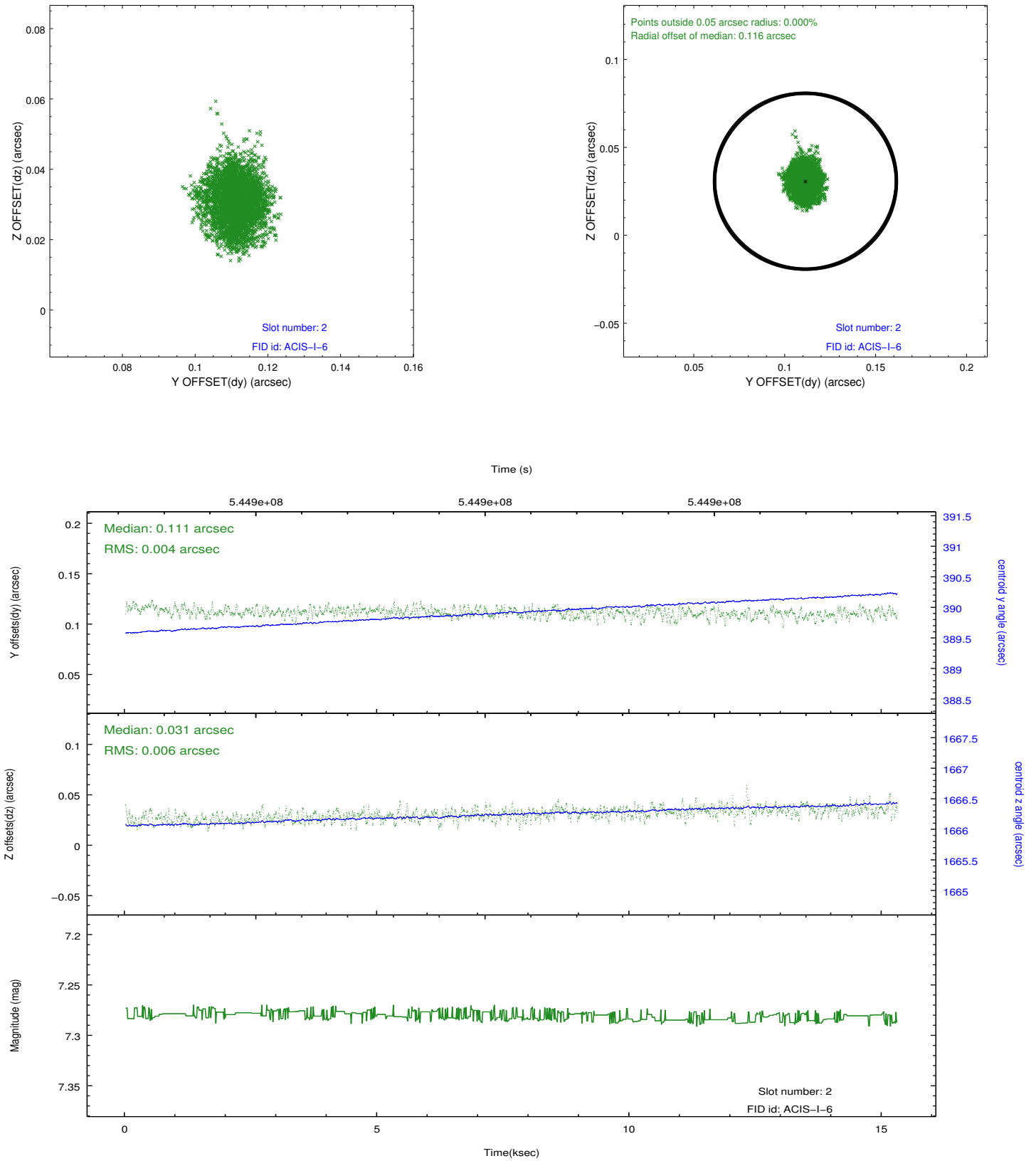
2.5.1 Slot 0



2.5.2 Slot 1



2.5.3 Slot 2



A Summary

A.1 Status

V&V Scientist	Jen Lauer
V&V Date (YYYY-MM-DD)	2015.04.09
V&V Edition	1
V&V Disposition and Status	OK
V&V Charge Time	14.885779488802

A.2 Comments

Window constraint met.