

V&V Reference Report

L2 ASCDS Version : 10.3.3

Observation 17401 - L2 Version 1
Chandra X-Ray Center

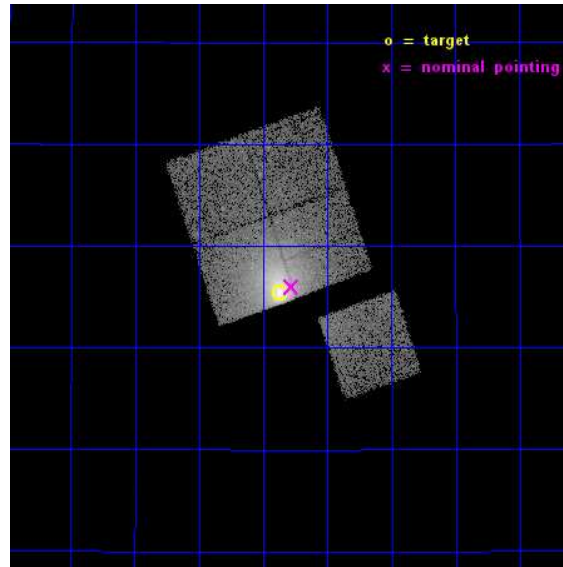
L2 Processing Date : Apr 8 2015

Contents

1	Front	2
2	OBI	3
2.1	OBI	3
2.1.1	Images	3
2.1.2	Bias	3
2.1.3	Parameters	4
2.1.4	Events	4
2.2	Compared Parameters	5
2.3	Aspect	6
2.4	Star Slots	9
2.4.1	Slot 3	9
2.4.2	Slot 4	10
2.4.3	Slot 5	11
2.4.4	Slot 6	12
2.4.5	Slot 7	13
2.5	FID Slots	14
2.5.1	Slot 0	14
2.5.2	Slot 1	15
2.5.3	Slot 2	16
A	Summary	17
A.1	Status	17
A.2	Comments	17

1 Front

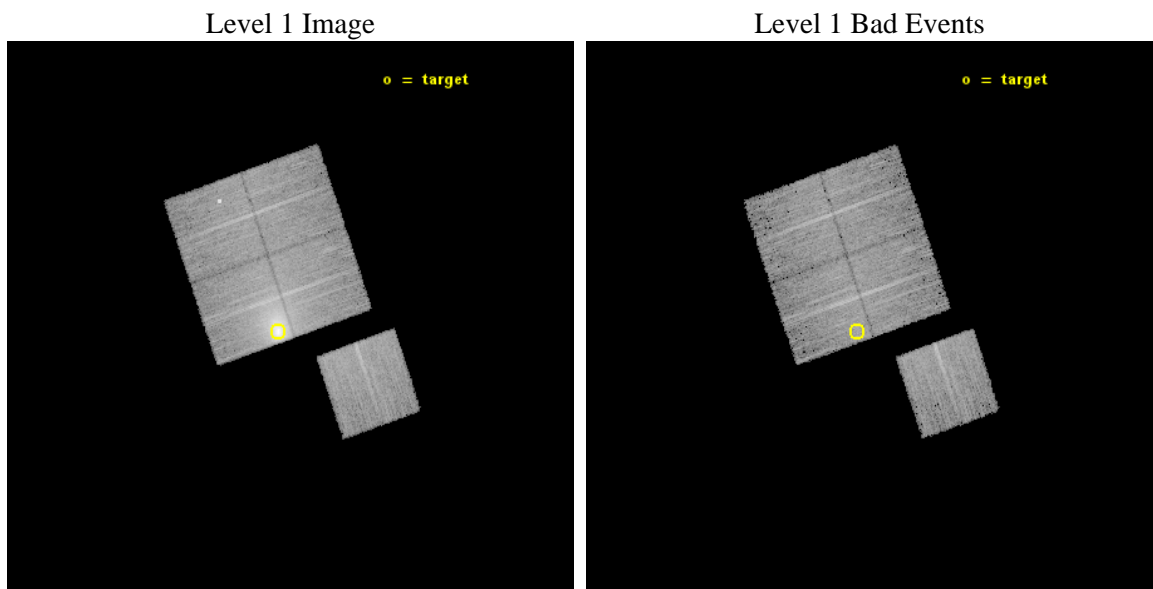
seq_num	890101	Sequence number
obs_id	17401	Observation id
title	AO-16 Calibration Observations of A1795	Proposal title
observer	Dr. CXC Calibration	Principal investigator
object	A1795	Source name
dtcycle	0	
cycle	P	events from which exps? Prim/Second/Both
ra_targ	207.219583	Observer's specified target RA [deg]
dec_targ	26.590833	Observer's specified target Dec [deg]
ra_nom	207.19540102037	Nominal RA [deg]
dec_nom	26.600170194607	Nominal Dec [deg]
roll_nom	160.89024318366	Nominal Roll [deg]
revision	1	Processing version of data
ontime	14776.959552288	Sum of GTIs [s]
livetime	14583.887697098	Livetime [s]
ontime0	14776.836442351	Sum of GTIs [s]
ontime1	14773.736402154	Sum of GTIs [s]
ontime2	14776.918522358	Sum of GTIs [s]
ontime3	14776.959552288	Sum of GTIs [s]
ontime6	14773.654332042	Sum of GTIs [s]
l2events	110082	Number of level 2 events



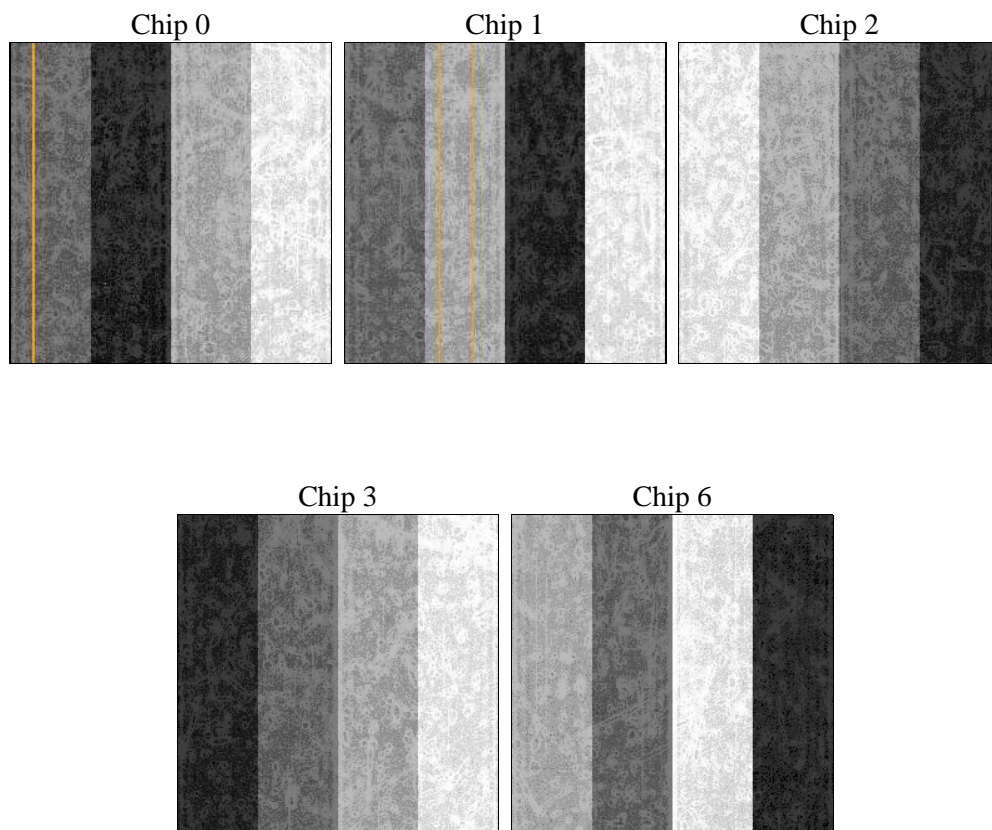
2 OBI

2.1 OBI

2.1.1 Images



2.1.2 Bias



2.1.3 Parameters

obi_num	0	Obi number	sched_exp_time	15000.000000	[s] Scheduled observation exposure time
ascdsver	10.3.3	Processing system revision	ontime	14776.959552288	Sum of GTIs [s]
caldsver	4.6.7	 	ontime0	14776.836442351	Sum of GTIs [s]
date	2015-04-08T11:23:00	Date and time of file creation	ontime1	14773.736402154	Sum of GTIs [s]
revision	1	Processing version of data	ontime2	14776.918522358	Sum of GTIs [s]
			ontime3	14776.959552288	Sum of GTIs [s]
			ontime6	14773.654332042	Sum of GTIs [s]
			l1events	424187	Number of level 1 events

2.1.4 Events

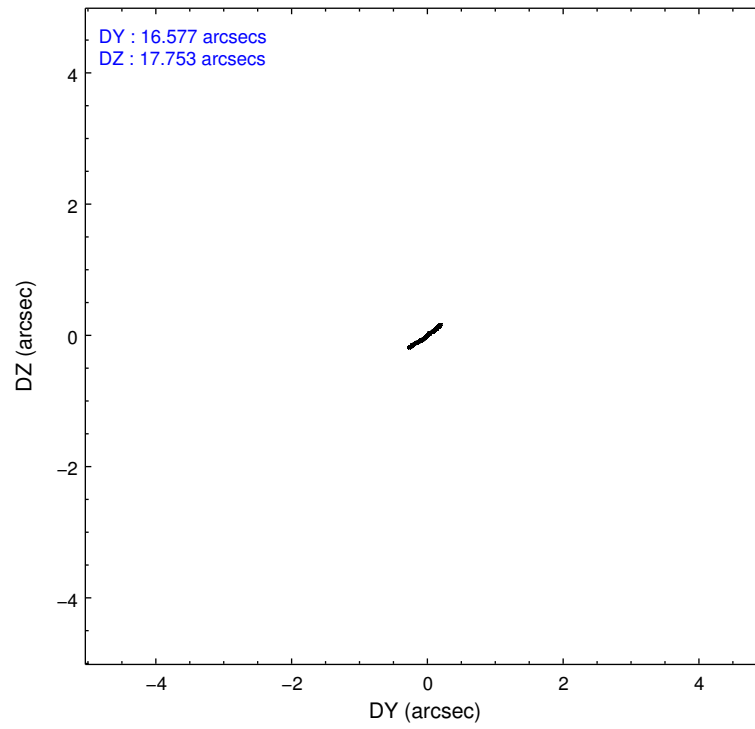
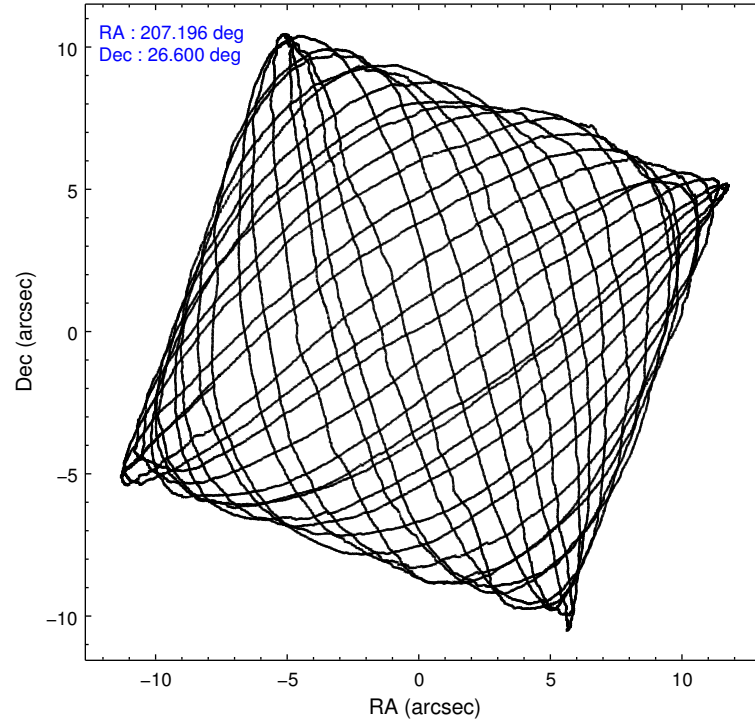
	ccd 0	ccd 1	ccd 2	ccd 3	ccd 6
level 1 events	66009	69939	81887	132541	73811
rejected events	57112	58715	62060	62337	63958
rejected %	86%	83%	75%	47%	86%

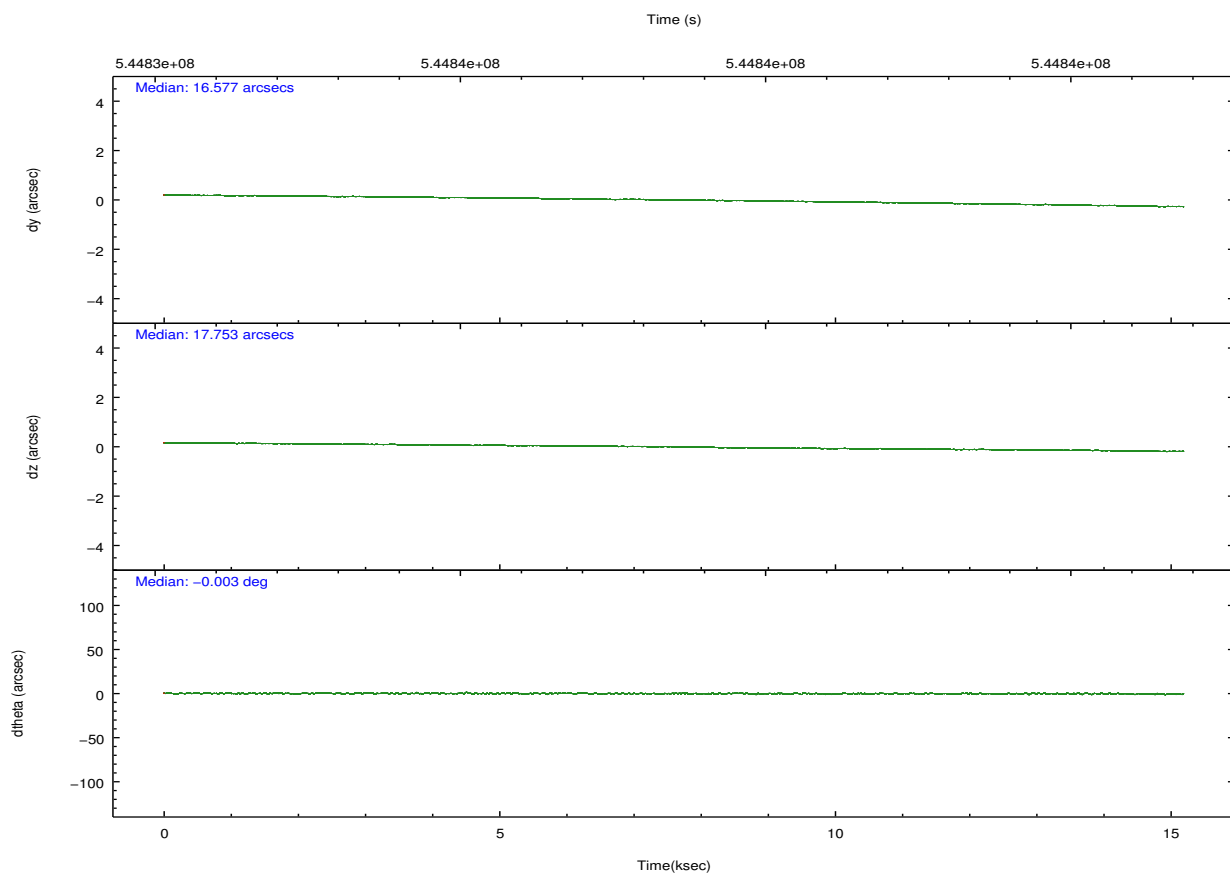
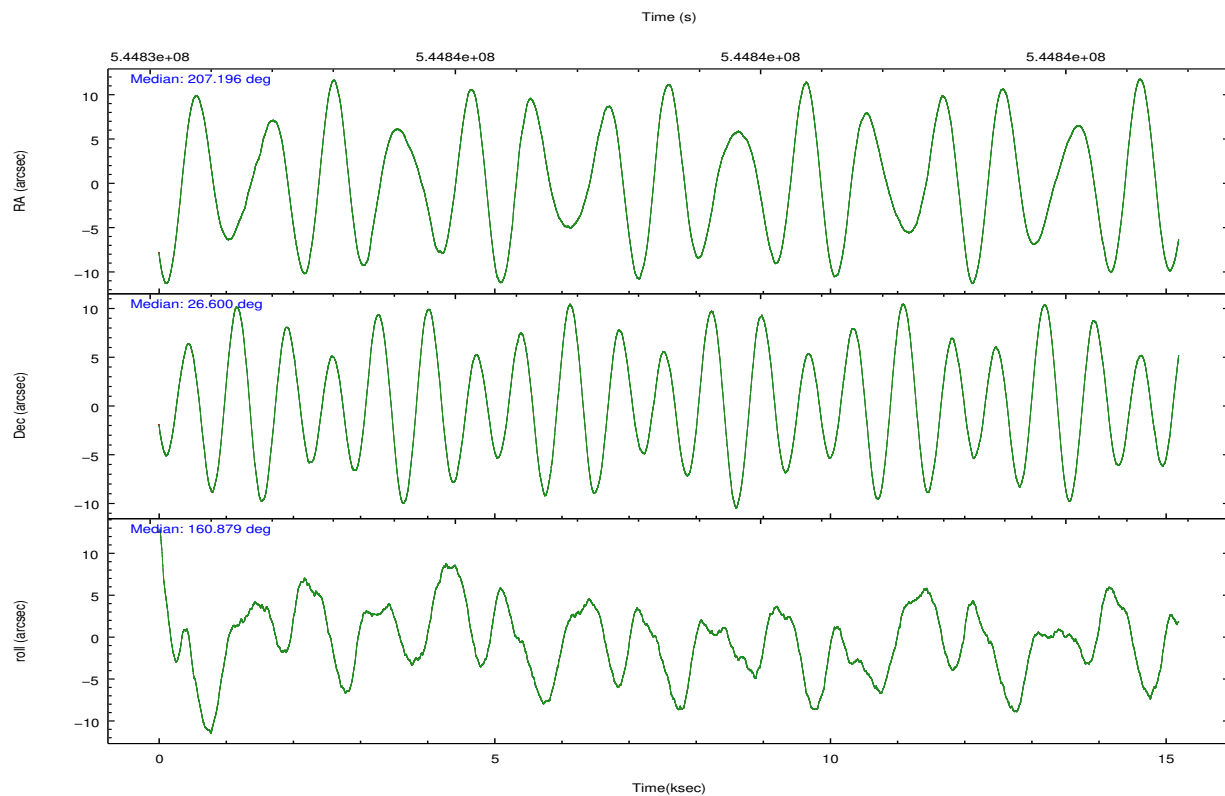
	ccd 0	ccd 1	ccd 2	ccd 3	ccd 6
grade 0 events	3409	5261	12643	53130	3962
	5%	7%	15%	40%	5%
grade 1 events	31	48	75	238	31
	0%	0%	0%	0%	0%
grade 2 events	2072	2127	2950	8023	2060
	3%	3%	3%	6%	2%
grade 3 events	916	902	1181	2817	854
	1%	1%	1%	2%	1%
grade 4 events	790	871	1204	2774	842
	1%	1%	1%	2%	1%
grade 5 events	3256	3473	3095	3908	3503
	4%	4%	3%	2%	4%
grade 6 events	1714	2066	1861	3489	2140
	2%	2%	2%	2%	2%
grade 7 events	53821	55191	58878	58162	60419
	81%	78%	71%	43%	81%

2.2 Compared Parameters

Parameter	Planned	Actual	Parameter	Planned	Actual
Instrument	ACIS	ACIS	Obspar format version number	7	7
Detector	ACIS-01236	ACIS-01236	Obspar file type	PREDICTED	ACTUAL
Grating	NONE	NONE	Obspar update status	NONE	UPDATED
Data mode	VFAINT	VFAINT	Number of optional ACIS chips dropped	0	0
Observation mode	POINTING	POINTING	On-chip summing requested	N	N
[deg] Pointing RA	207.225736	207.1954010203733	Subarray requested	NONE	NONE
[deg] Pointing Dec	26.605512	26.60017019460716	Alternating exposures requested	N	N
[deg] Pointing Roll	160.667977	160.8902431836629	[s] Primary exposure time	0.000000	3.1
[s] Window start time (MET)	544233667.184000	544233667.184000			
[s] Window stop time (MET)	546739267.184000	546739267.184000			
[mm] SIM focus pos	-0.782348	-0.7809083437167272			
[mm] SIM defocus	0	0.001439871863259334			
[mm] SIM translation stage pos	-214.092463	-214.0989765584371			
[mm] SIM translation stage offset	-19.5	-19.49347644449256			
[s] Observation start time (MET)	544831099.184000	544830723.29502			
Observation start date	2015-04-07T21:57:12	2015-04-07T21:52:03			
[s] Observation end time (MET)	544846099.184000	544846233.59589			
Observation end date	2015-04-08T02:07:12	2015-04-08T02:10:33			
Read mode	TIMED	TIMED			

2.3 Aspect



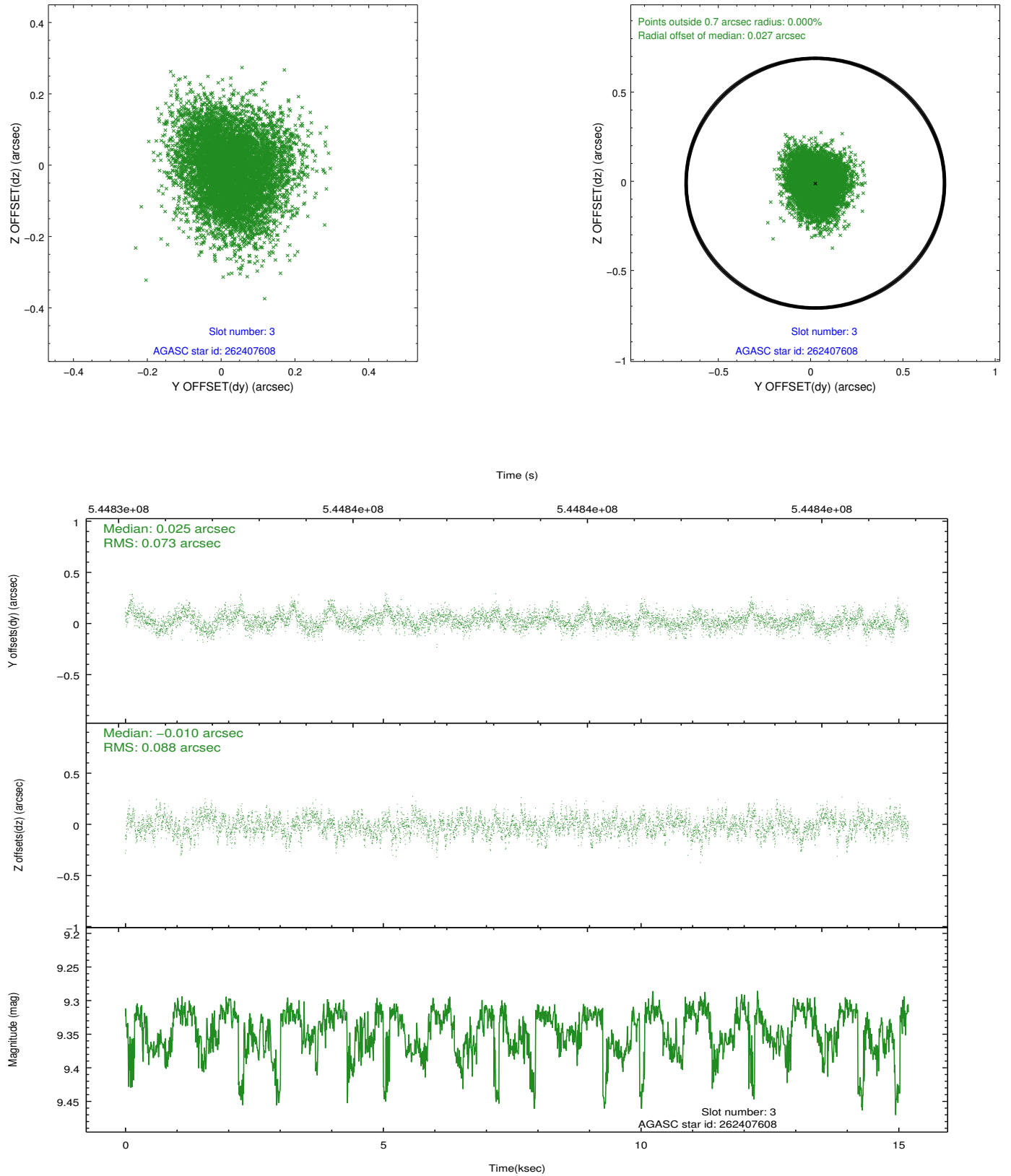


Slot Statistics

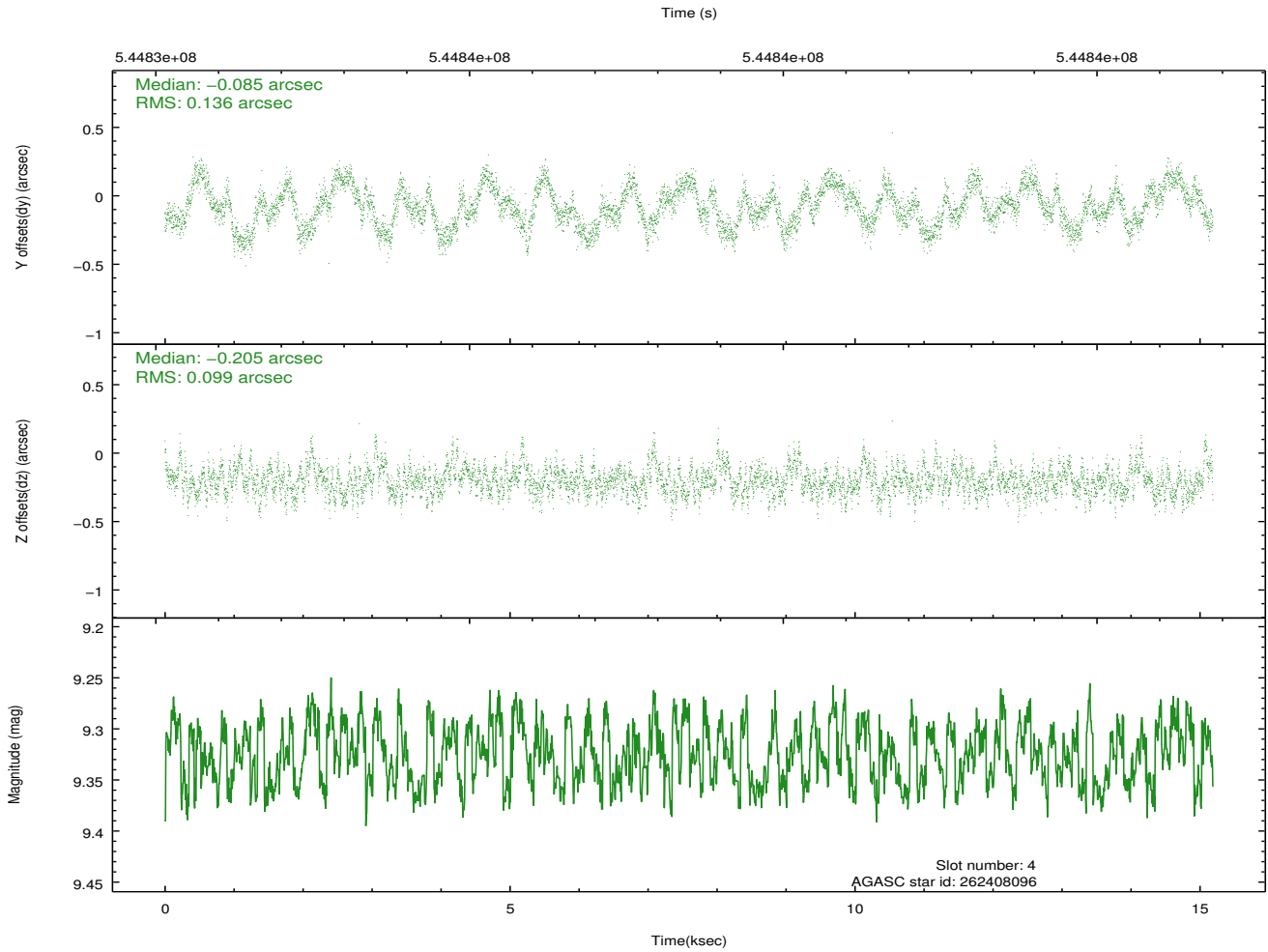
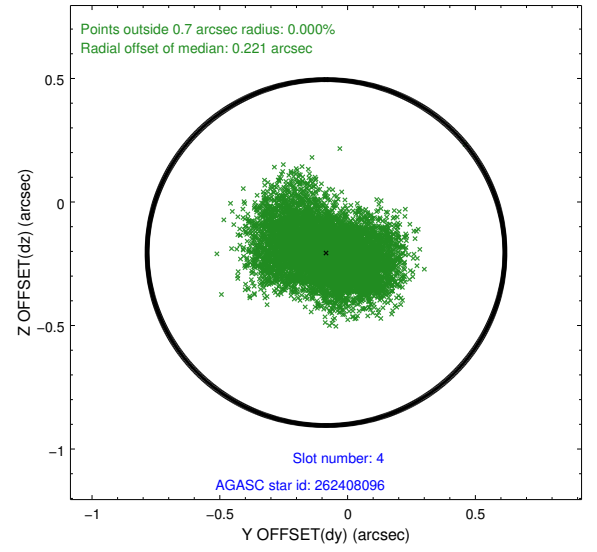
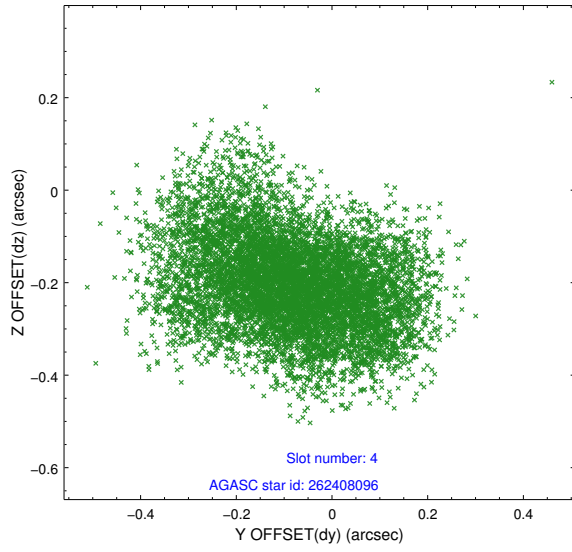
slot	status	used	id	mag	n_pts	med_dy	med_dz	dr1	dr2	ra	dec	mean_y	mean_z
0	FID		ACIS-I-1	7.20	3706	0.321	-0.279	0.008	0.013	0.000000	0.000000	922.83	-1242.01
1	FID		ACIS-I-5	7.18	3706	-0.543	0.205	0.007	0.012	0.000000	0.000000	-1826.01	655.66
2	FID		ACIS-I-6	7.22	3706	0.131	0.145	0.008	0.013	0.000000	0.000000	387.82	1300.48
3	GUIDE	used	262407608	9.34	7407	0.025	-0.010	0.123	0.198	207.378401	26.435507	-666.86	414.35
4	GUIDE	used	262408096	9.33	7406	-0.085	-0.205	0.185	0.288	207.011678	26.515421	544.09	533.86
5	GUIDE	used	262408512	7.98	7408	0.066	0.331	0.100	0.169	207.800210	27.128796	-1110.96	-2390.53
6	GUIDE	used	262408936	9.66	7402	-0.014	0.140	0.177	0.275	207.154731	26.726554	359.56	-335.53
7	GUIDE	used	262411960	9.67	7403	0.025	-0.241	0.155	0.256	207.327895	25.881727	-1174.89	2348.71

2.4 Star Slots

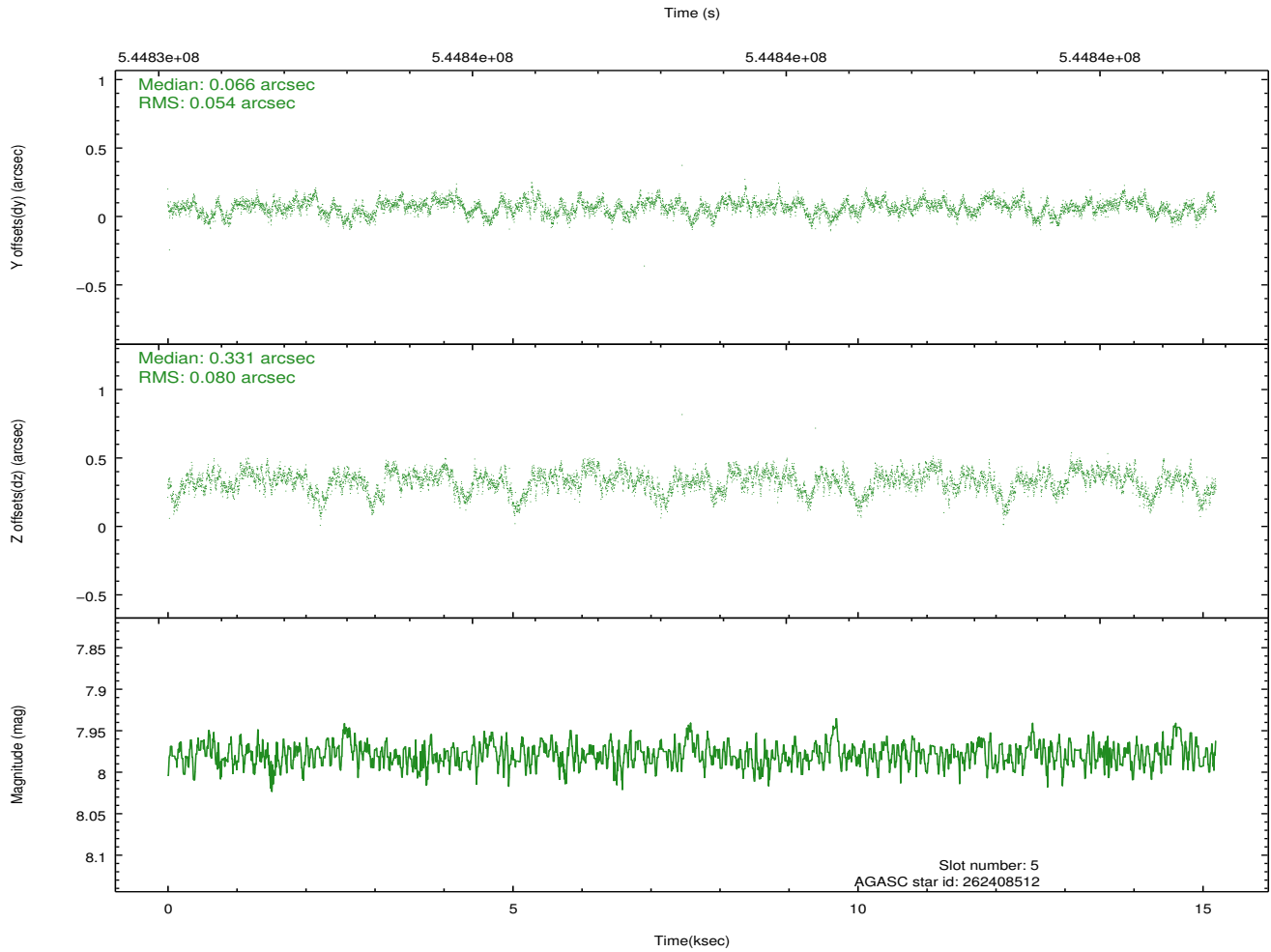
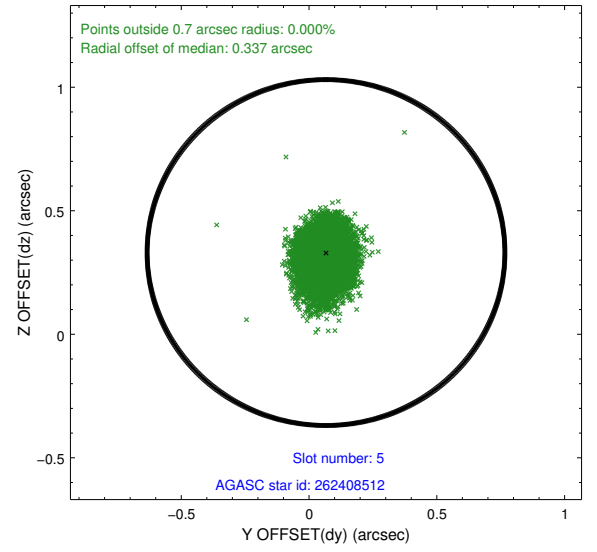
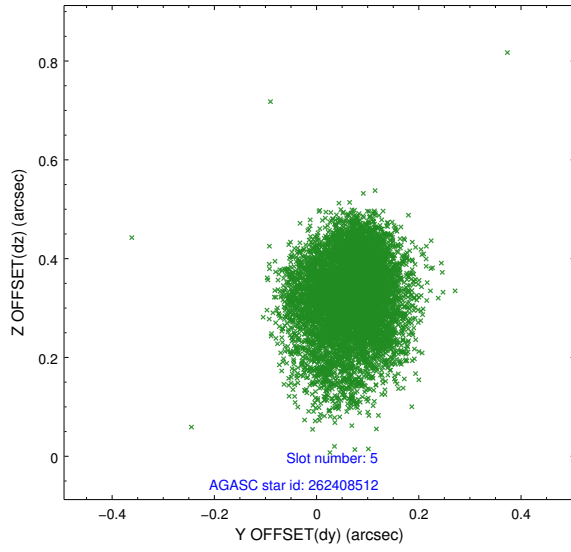
2.4.1 Slot 3



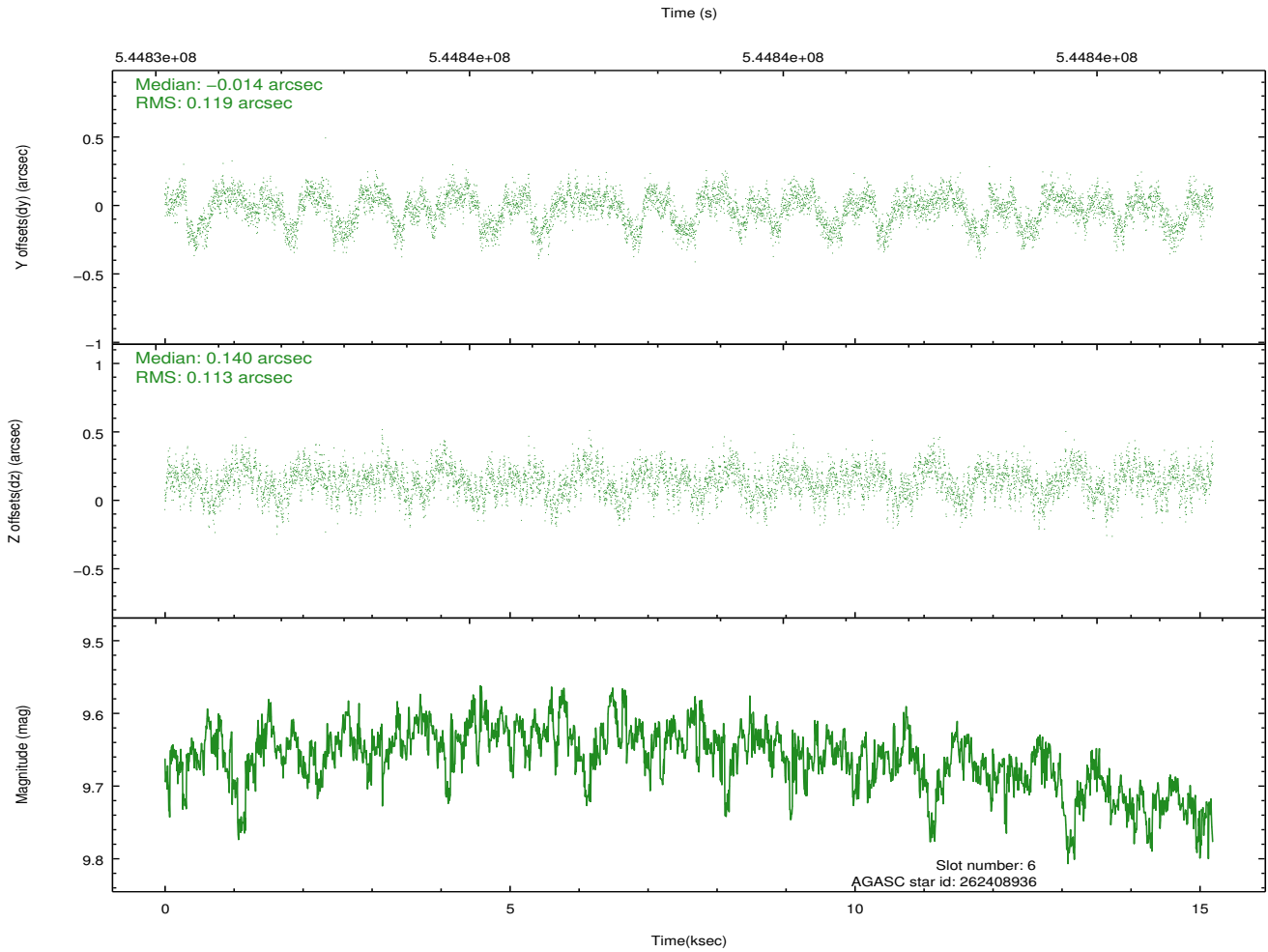
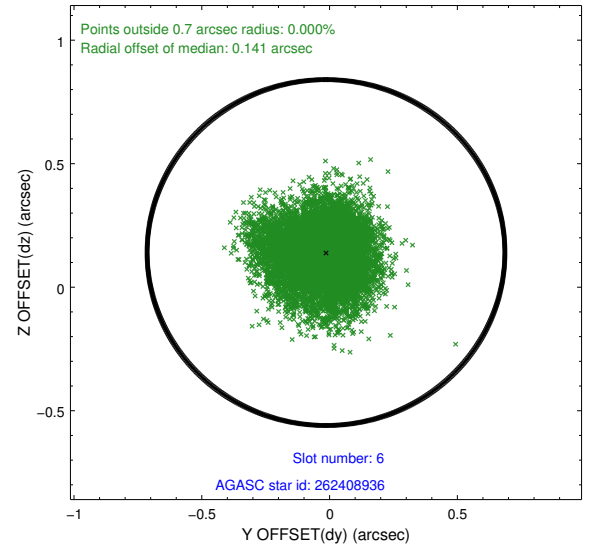
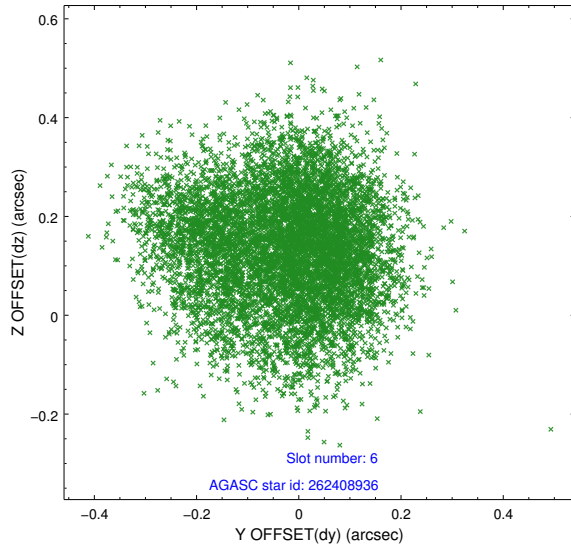
2.4.2 Slot 4



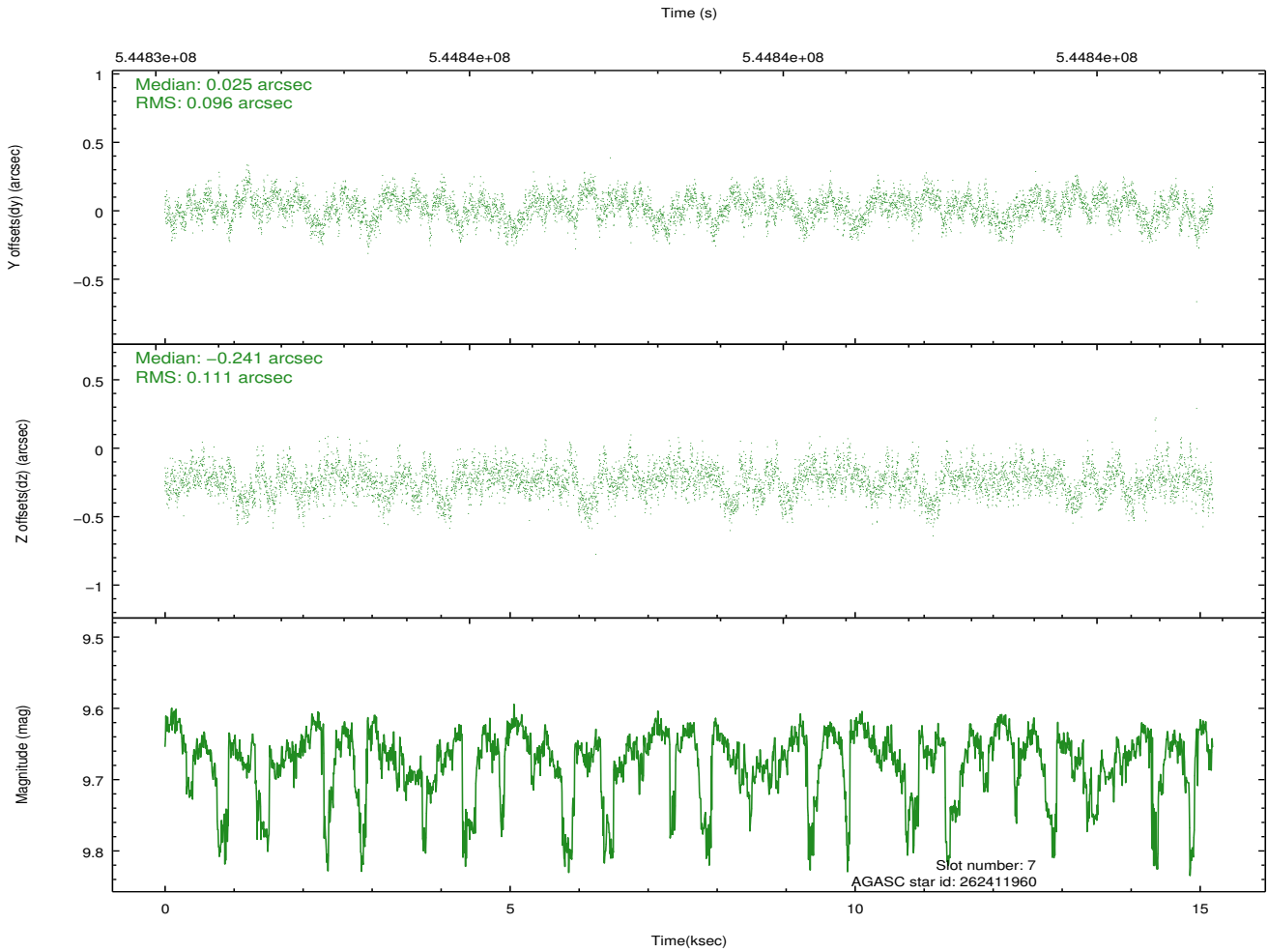
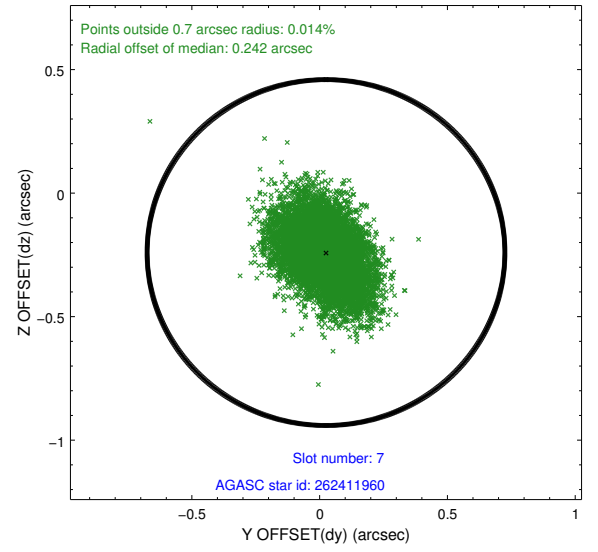
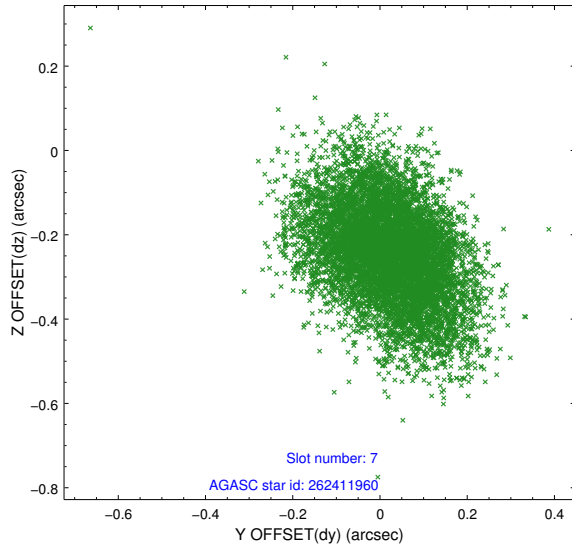
2.4.3 Slot 5



2.4.4 Slot 6

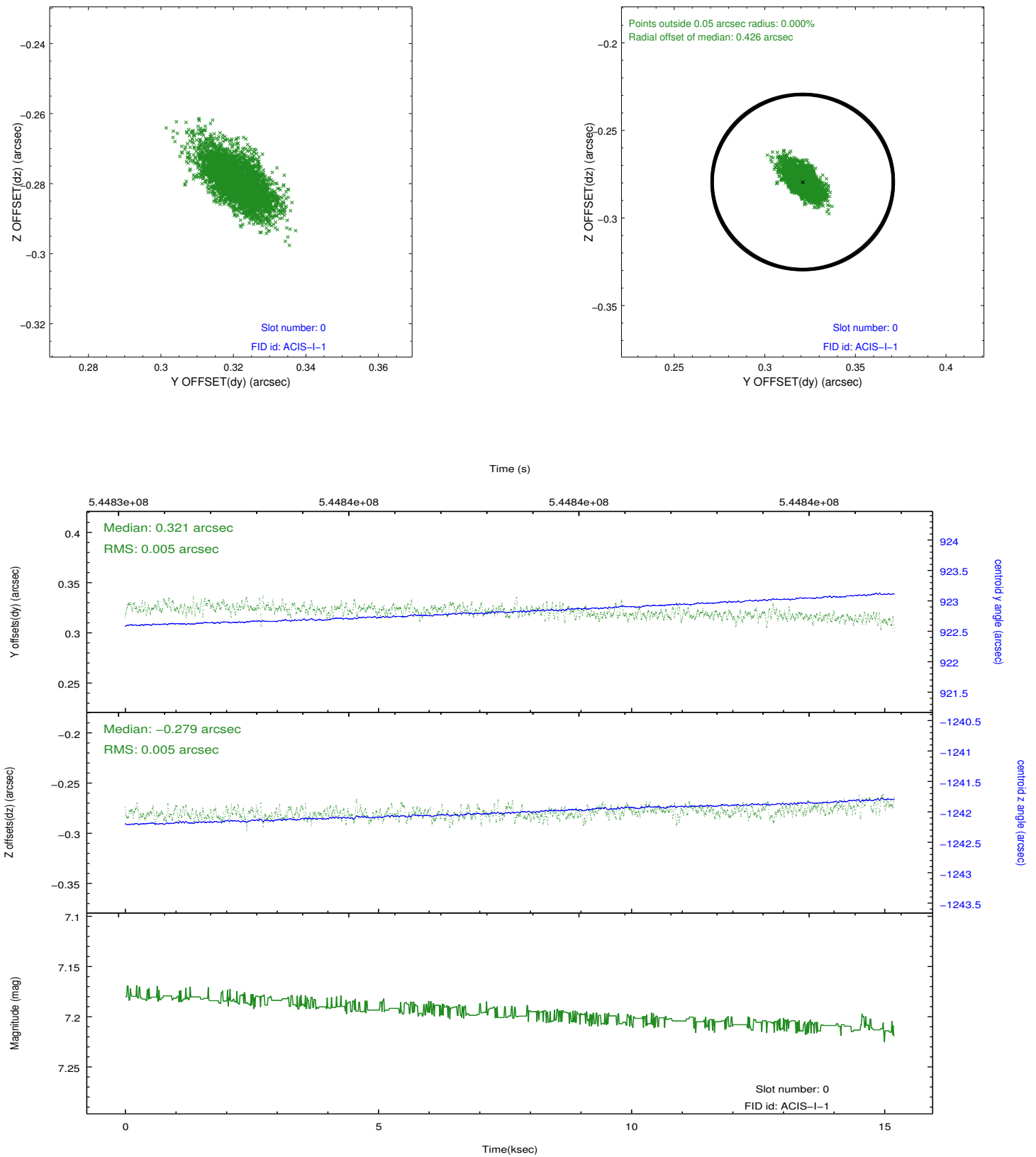


2.4.5 Slot 7

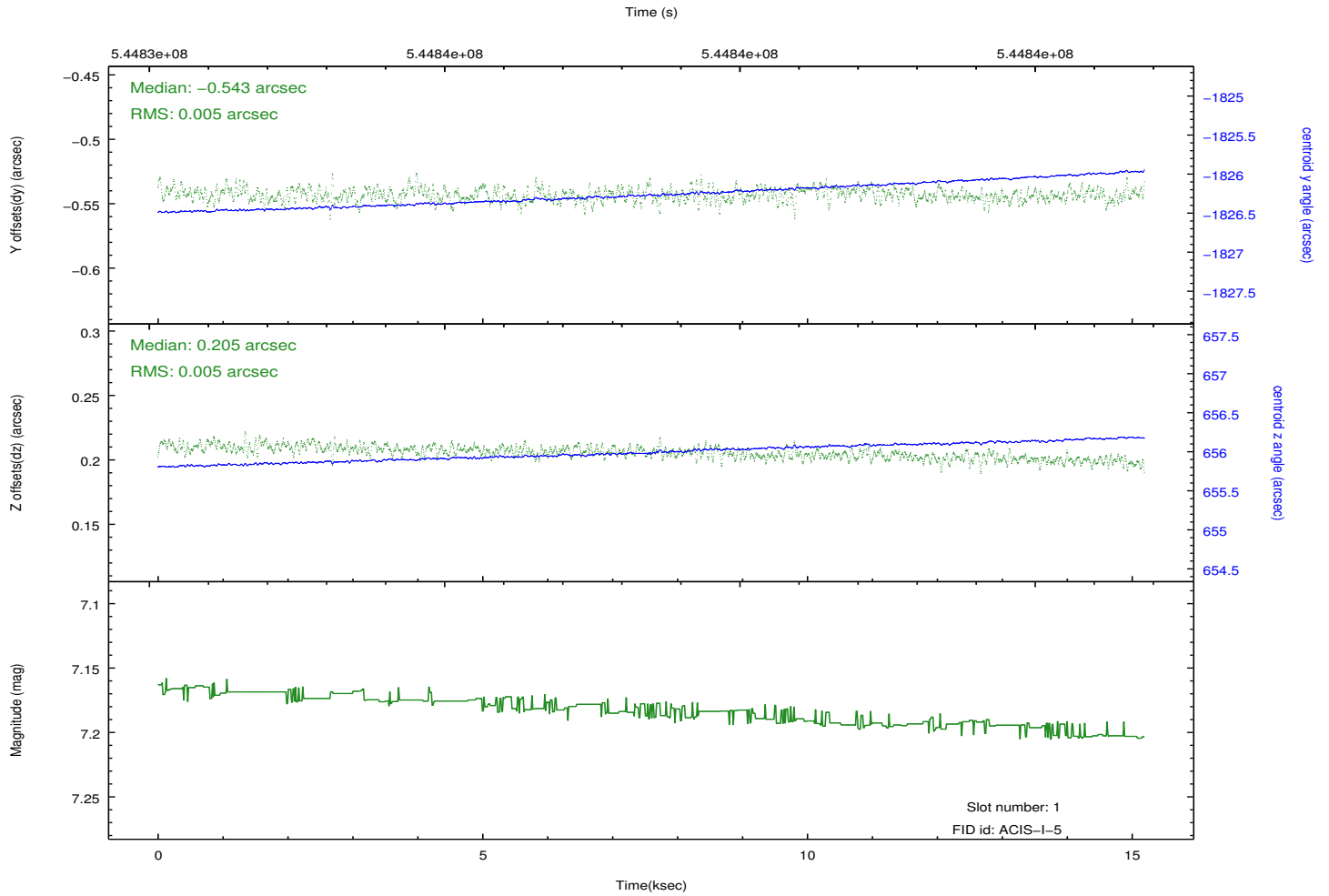
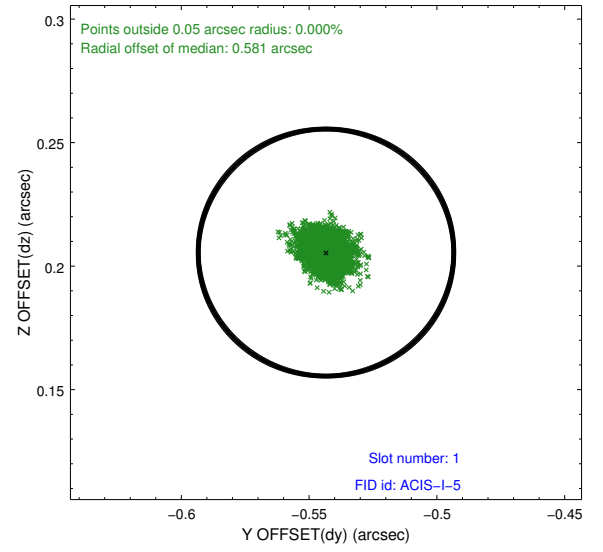
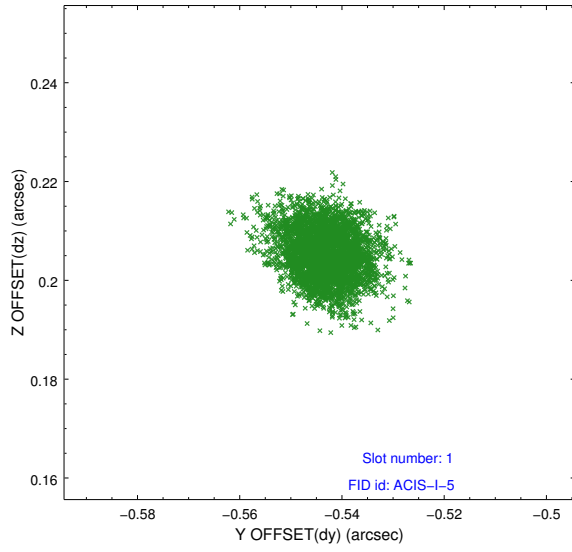


2.5 FID Slots

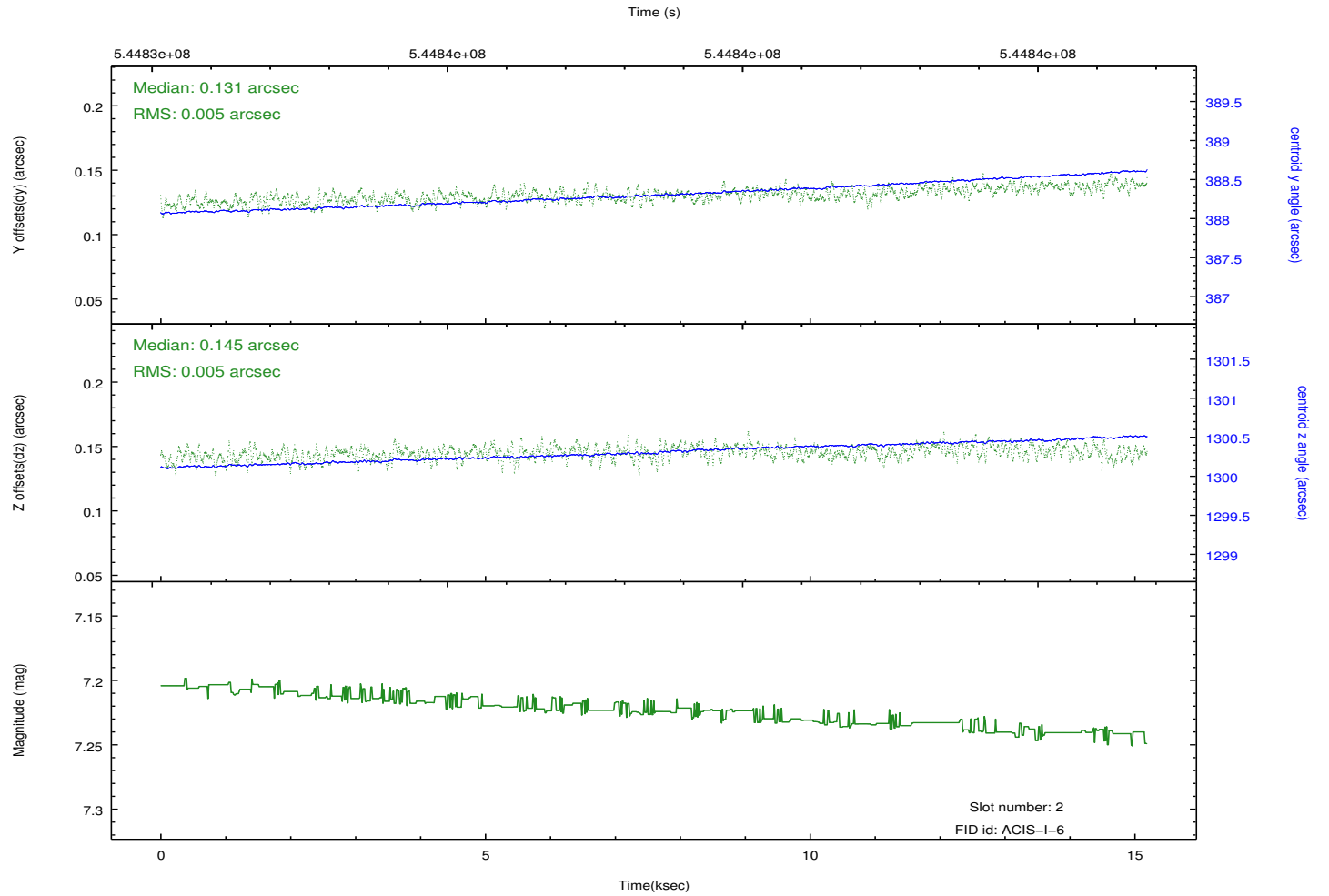
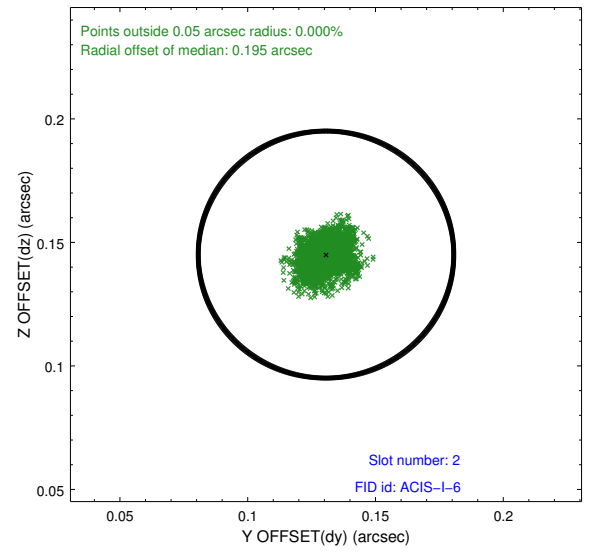
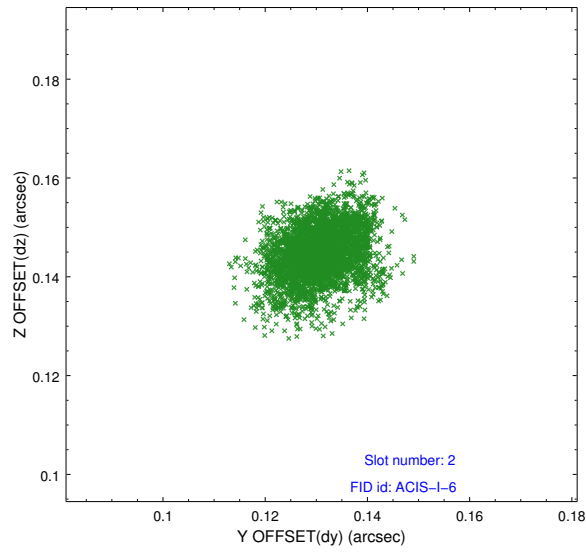
2.5.1 Slot 0



2.5.2 Slot 1



2.5.3 Slot 2



A Summary

A.1 Status

V&V Scientist	Jen Lauer
V&V Date (YYYY-MM-DD)	2015.04.08
V&V Edition	1
V&V Disposition and Status	OK
V&V Charge Time	14.776959552288

A.2 Comments

Window constraint met.