

V&V Reference Report

L2 ASCDS Version : 10.2.1

Observation 16436 - L2 Version 3
Chandra X-Ray Center

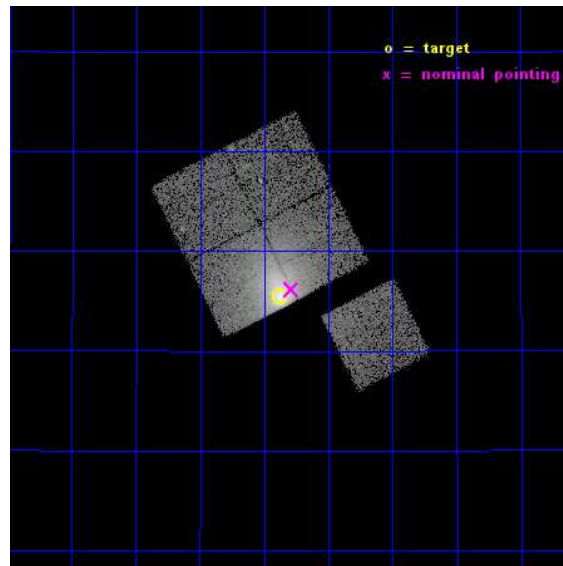
L2 Processing Date : Dec 10 2014

Contents

1	Front	2
2	OBI	3
2.1	OBI	3
2.1.1	Images	3
2.1.2	Bias	3
2.1.3	Parameters	4
2.1.4	Events	4
2.2	Compared Parameters	5
2.3	Aspect	6
2.4	Star Slots	9
2.4.1	Slot 3	9
2.4.2	Slot 4	10
2.4.3	Slot 5	11
2.4.4	Slot 6	12
2.4.5	Slot 7	13
2.5	FID Slots	14
2.5.1	Slot 0	14
2.5.2	Slot 1	15
2.5.3	Slot 2	16
A	Summary	17
A.1	Status	17
A.2	Comments	17

1 Front

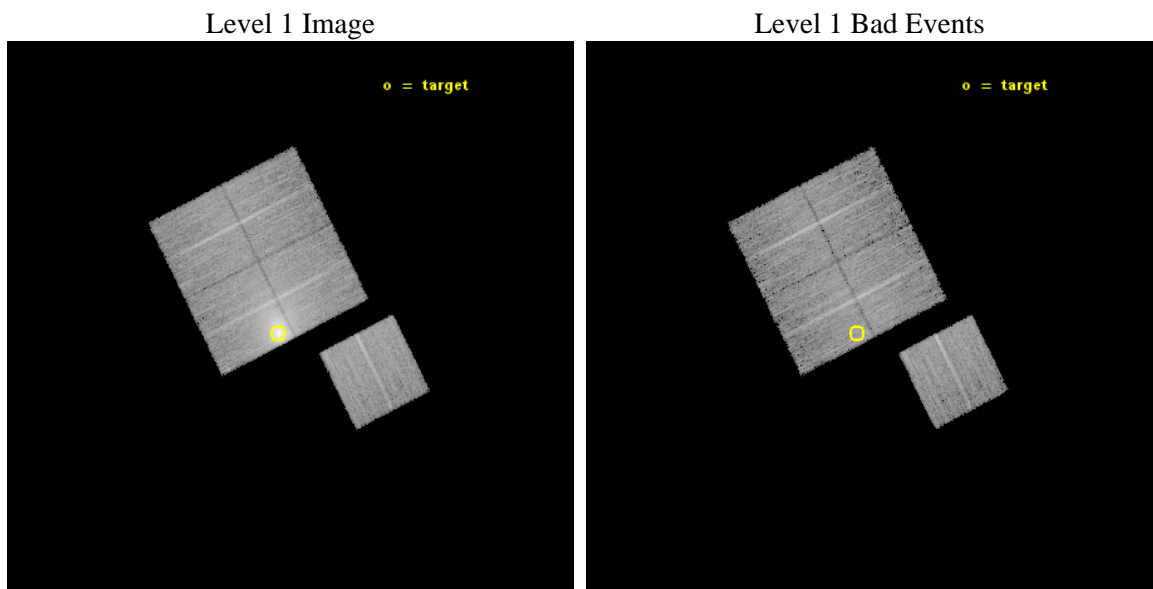
seq_num	890083	Sequence number
obs_id	16436	Observation id
title	AO-15 Calibration Observations of A1795	Proposal title
observer	Dr. CXC Calibration	Principal investigator
object	A1795	Source name
dtcycle	0	
cycle	P	events from which exps? Prim/Second/Both
ra_targ	207.219583	Observer's specified target RA [deg]
dec_targ	26.590833	Observer's specified target Dec [deg]
ra_nom	207.19715352662	Nominal RA [deg]
dec_nom	26.602971011042	Nominal Dec [deg]
roll_nom	153.21680037703	Nominal Roll [deg]
revision	3	Processing version of data
ontime	14773.973065436	Sum of GTIs [s]
livetime	14580.940230895	Livetime [s]
ontime0	14776.991025925	Sum of GTIs [s]
ontime1	14777.032065928	Sum of GTIs [s]
ontime2	14773.932035565	Sum of GTIs [s]
ontime3	14773.973065436	Sum of GTIs [s]
ontime6	14776.949985921	Sum of GTIs [s]
l2events	113833	Number of level 2 events



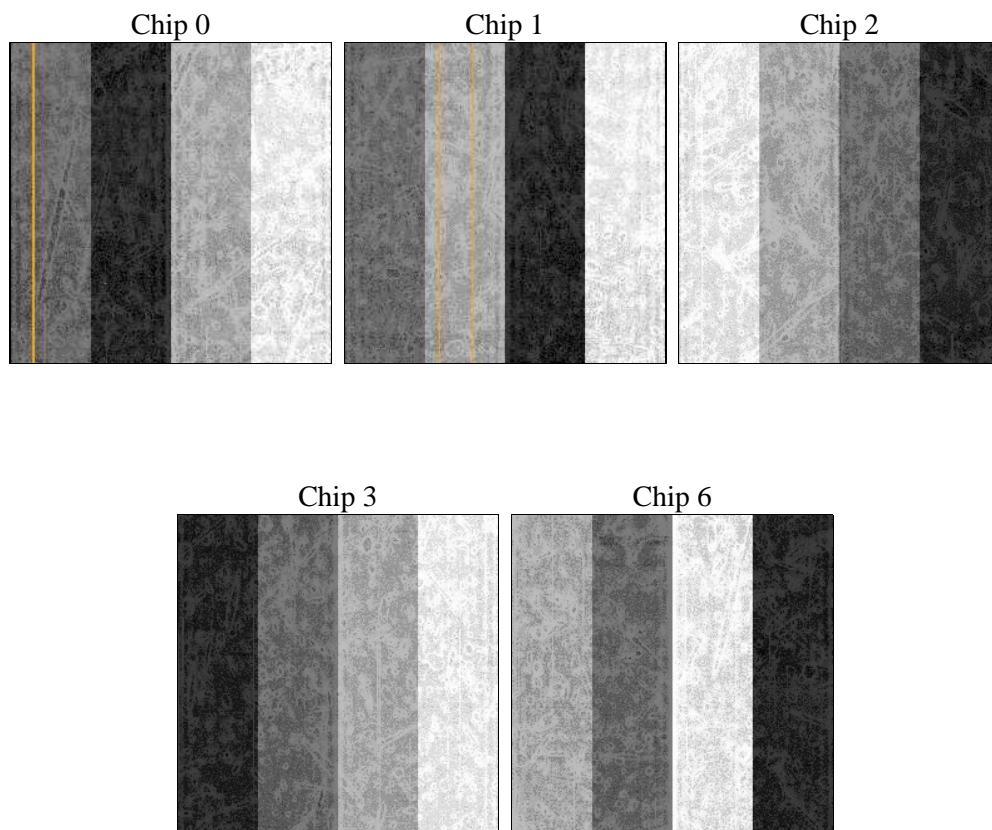
2 OBI

2.1 OBI

2.1.1 Images



2.1.2 Bias



2.1.3 Parameters

obi_num	0	Obi number	sched_exp_time	15000.000000	[s] Scheduled observation exposure time
ascdsver	10.3.1	Processing system revision	ontime	14773.973065436	Sum of GTIs [s]
caldsver	4.6.4	 	ontime0	14776.991025925	Sum of GTIs [s]
date	2014-12-10T17:42:06	Date and time of file creation	ontime1	14777.032065928	Sum of GTIs [s]
revision	3	Processing version of data	ontime2	14773.932035565	Sum of GTIs [s]
			ontime3	14773.973065436	Sum of GTIs [s]
			ontime6	14776.949985921	Sum of GTIs [s]
			l1events	429970	Number of level 1 events

2.1.4 Events

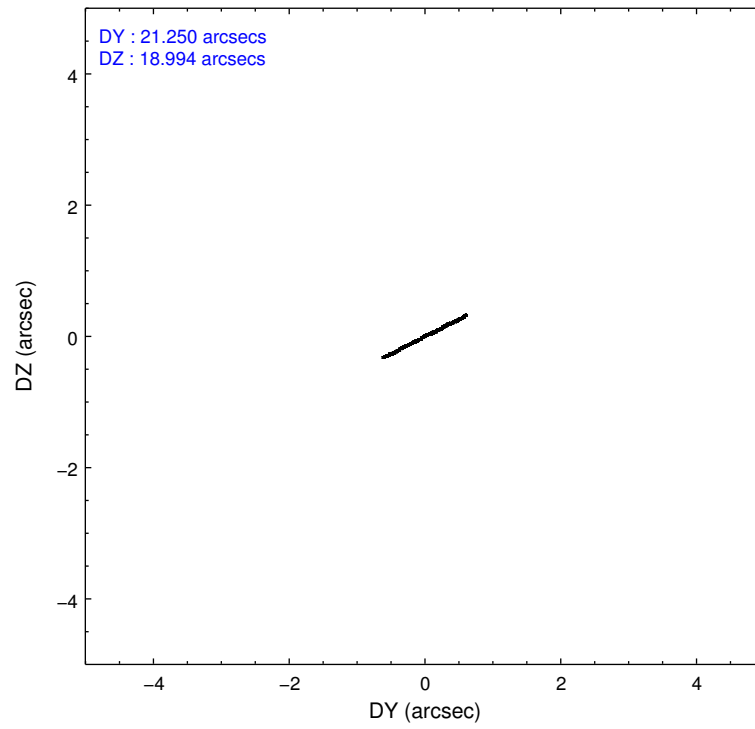
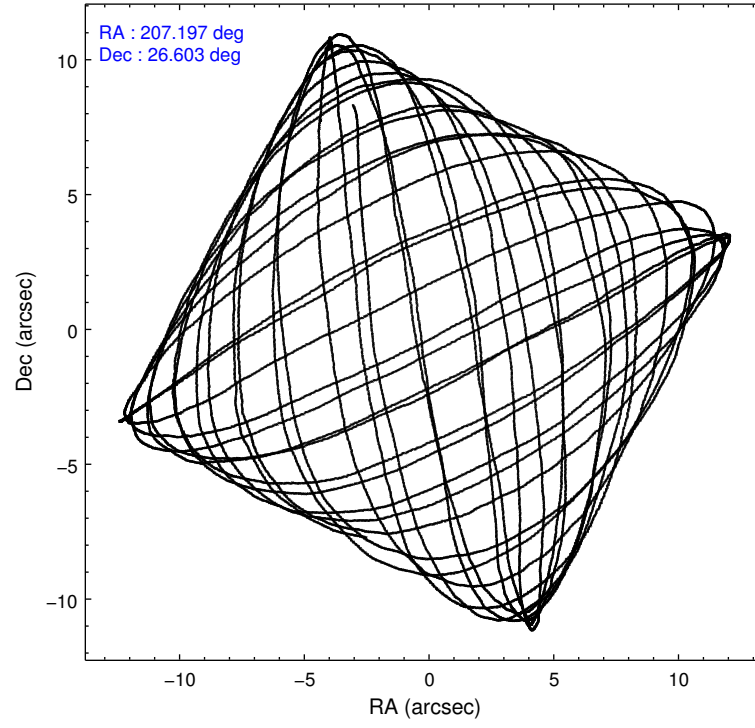
	ccd 0	ccd 1	ccd 2	ccd 3	ccd 6
level 1 events	64862	69531	86978	134074	74525
rejected events	55490	59512	64701	62920	64531
rejected %	85%	85%	74%	46%	86%

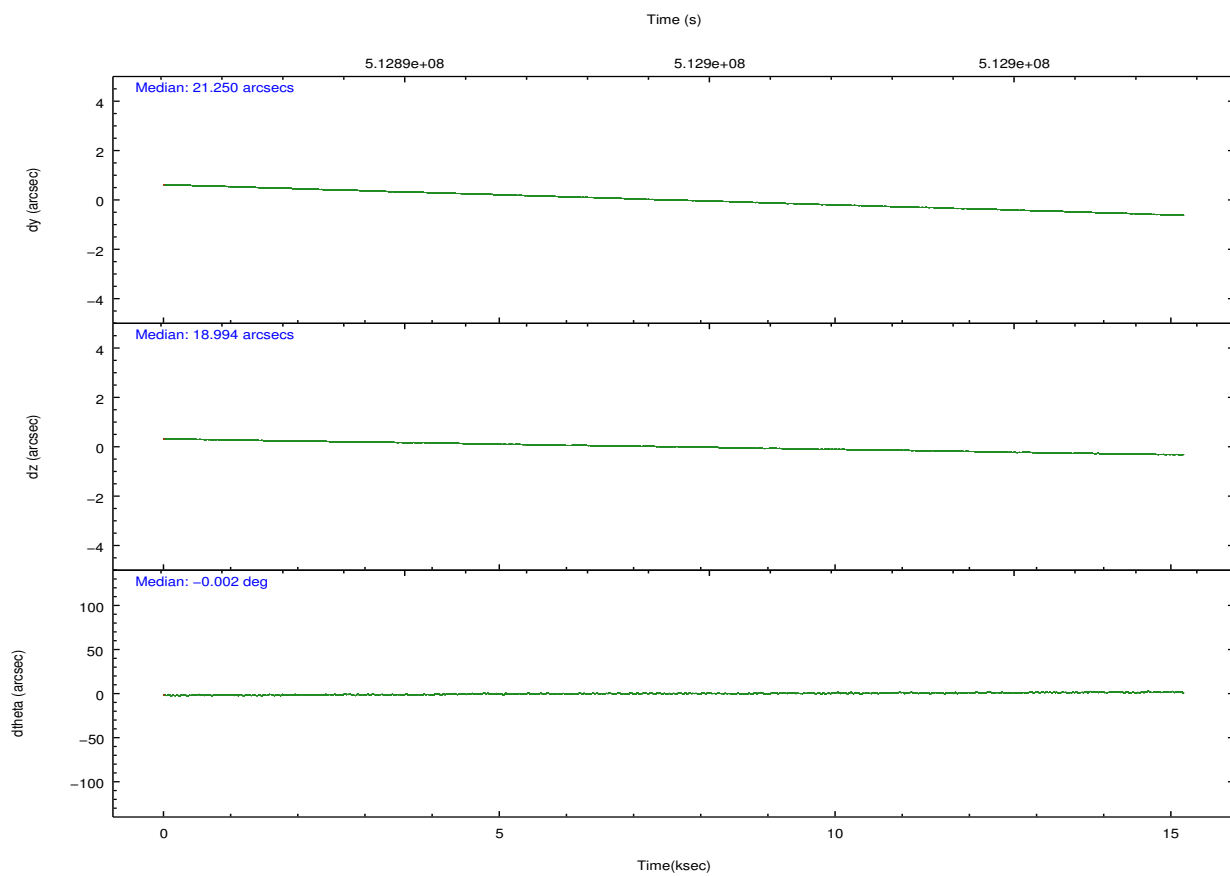
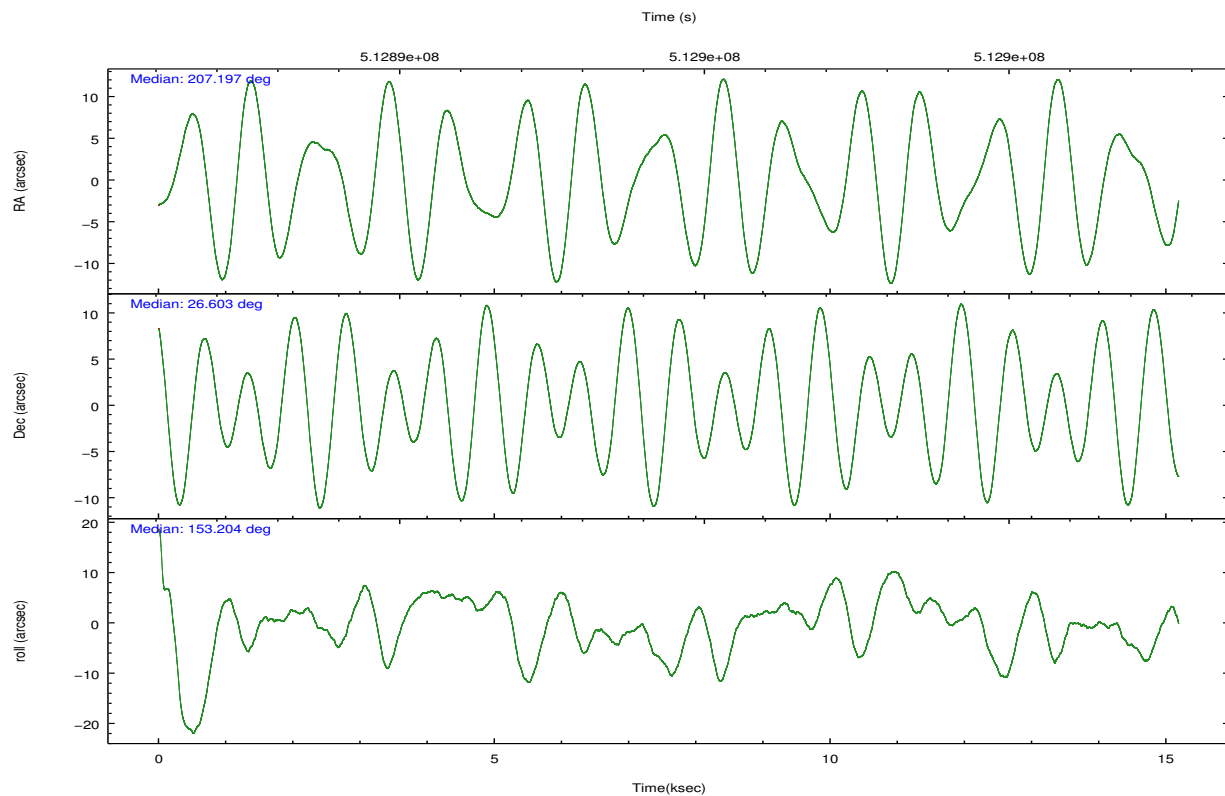
	ccd 0	ccd 1	ccd 2	ccd 3	ccd 6
grade 0 events	3676	3905	14436	53941	4012
	5%	5%	16%	40%	5%
grade 1 events	48	42	79	270	46
	0%	0%	0%	0%	0%
grade 2 events	2134	2175	3311	8214	2150
	3%	3%	3%	6%	2%
grade 3 events	898	901	1260	2845	908
	1%	1%	1%	2%	1%
grade 4 events	878	912	1263	2787	879
	1%	1%	1%	2%	1%
grade 5 events	3397	3482	3179	4059	3694
	5%	5%	3%	3%	4%
grade 6 events	1789	2127	2016	3380	2046
	2%	3%	2%	2%	2%
grade 7 events	52042	55987	61434	58578	60790
	80%	80%	70%	43%	81%

2.2 Compared Parameters

Parameter	Planned	Actual	Parameter	Planned	Actual
Instrument	ACIS	ACIS	Obspar format version number	7	7
Detector	ACIS-01236	ACIS-01236	Obspar file type	PREDICTED	ACTUAL
Grating	NONE	NONE	Obspar update status	NONE	UPDATED
Data mode	VFAINT	VFAINT	Number of optional ACIS chips dropped	0	0
Observation mode	POINTING	POINTING	On-chip summing requested	N	N
[deg] Pointing RA	207.227867	207.1971535266184	Subarray requested	NONE	NONE
[deg] Pointing Dec	26.604645	26.60297101104178	Alternating exposures requested	N	N
[deg] Pointing Roll	152.994362	153.2168003770304	[s] Primary exposure time	0.000000	3.1
[s] Window start time (MET)	512697667.184000	512697667.184000			
[s] Window stop time (MET)	515203267.184000	515203267.184000			
[mm] SIM focus pos	-0.782348	-0.7809083437167272			
[mm] SIM defocus	0	0.001439871863259334			
[mm] SIM translation stage pos	-214.092463	-214.0989765584371			
[mm] SIM translation stage offset	-19.5	-19.49347644449256			
[s] Observation start time (MET)	512887007.184000	512886630.85739			
Observation start date	2014-04-03T04:35:40	2014-04-03T04:30:30			
[s] Observation end time (MET)	512902007.184000	512902140.64574			
Observation end date	2014-04-03T08:45:40	2014-04-03T08:49:00			
Read mode	TIMED	TIMED			

2.3 Aspect



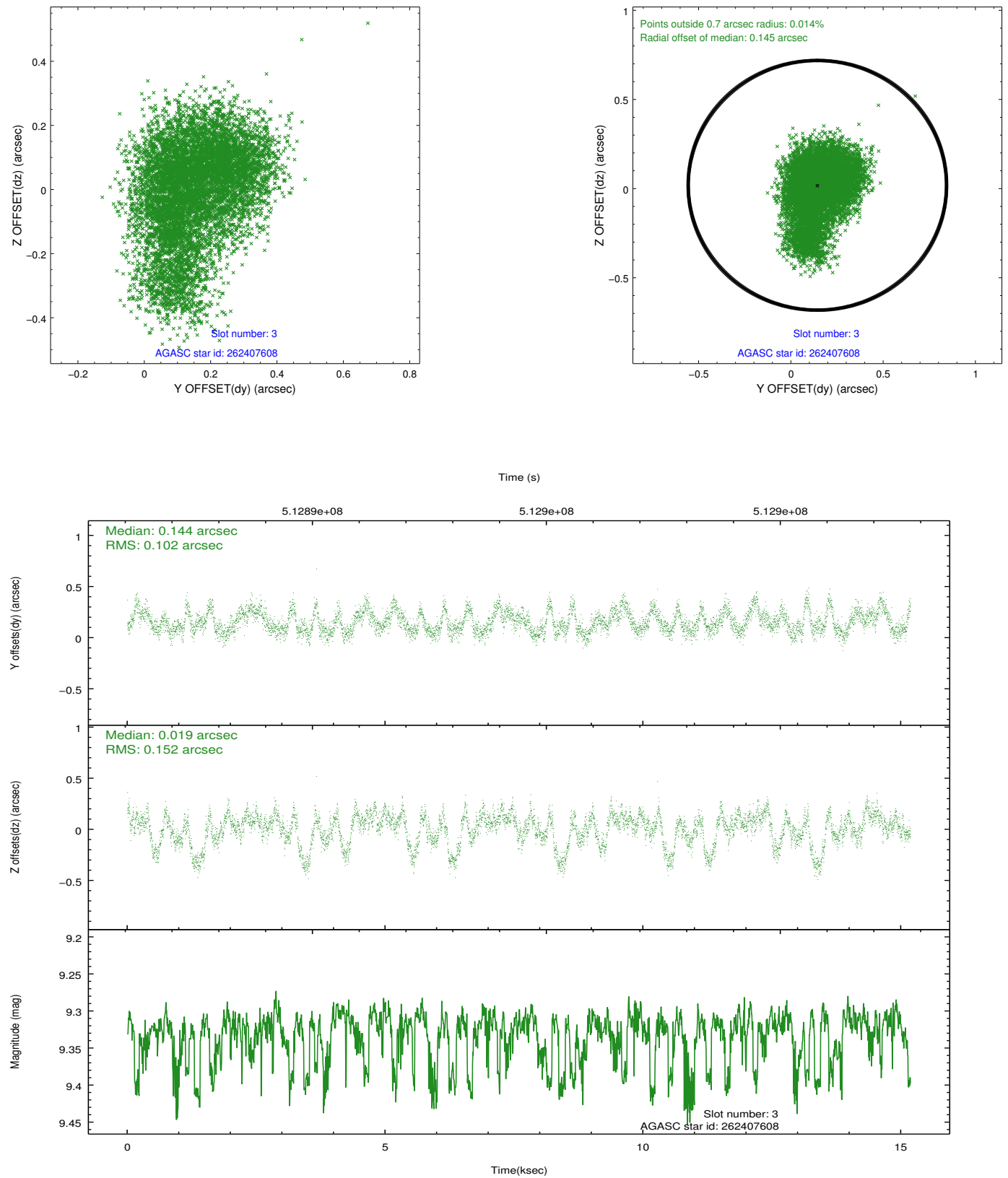


Slot Statistics

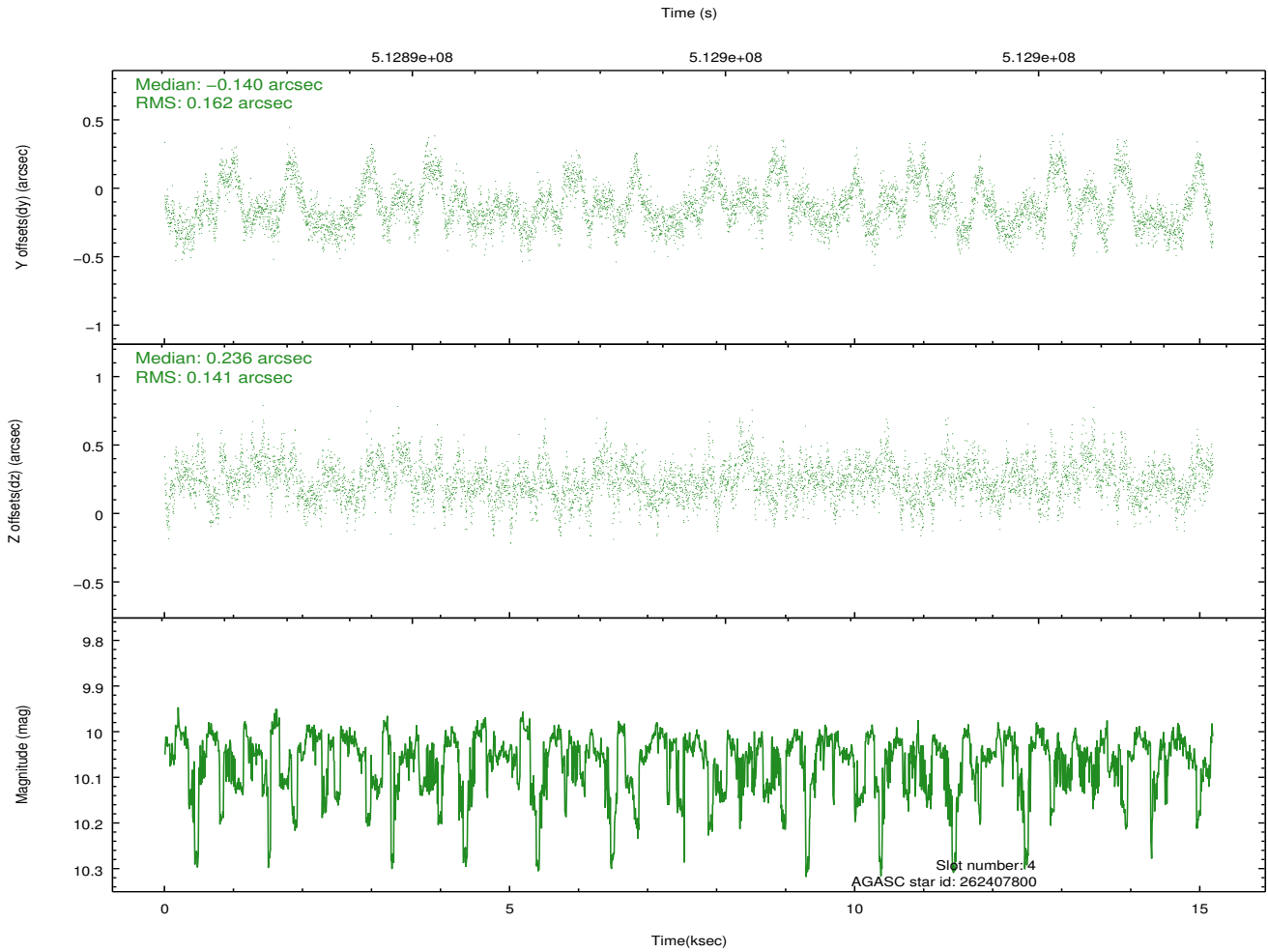
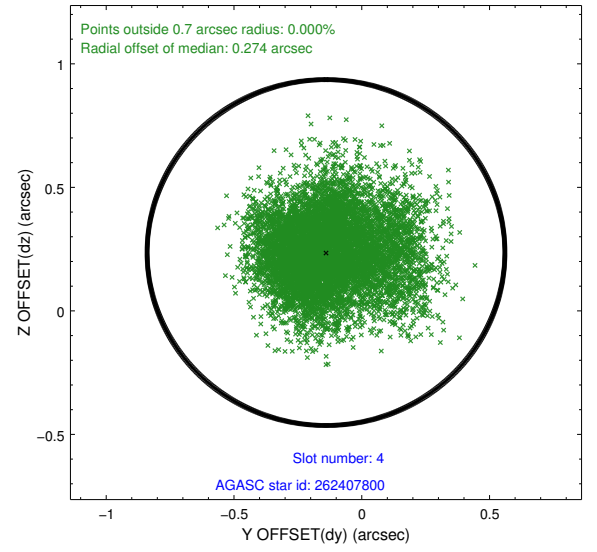
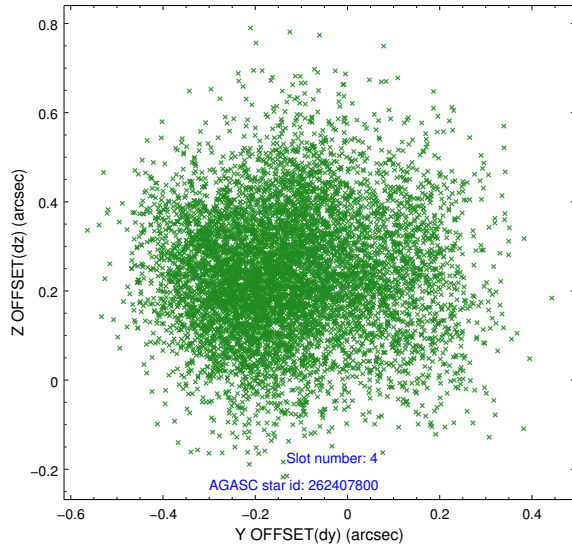
slot	status	used	id	mag	n_pts	med_dy	med_dz	dr1	dr2	ra	dec	mean_y	mean_z
0	FID		ACIS-I-1	7.17	3704	0.313	-0.241	0.011	0.023	0.000000	0.000000	917.98	-1243.26
1	FID		ACIS-I-5	7.18	3704	-0.550	0.204	0.009	0.014	0.000000	0.000000	-1830.82	654.42
2	FID		ACIS-I-6	7.22	3704	0.145	0.106	0.012	0.019	0.000000	0.000000	383.05	1299.16
3	GUIDE	used	262407608	9.33	7404	0.144	0.019	0.188	0.339	207.378401	26.435507	-708.35	322.00
4	GUIDE	used	262407800	10.05	7401	-0.140	0.236	0.228	0.374	207.321181	27.251762	794.72	-2208.95
5	GUIDE	used	262408096	9.33	7403	-0.107	-0.093	0.178	0.295	207.011678	26.515421	475.75	601.91
6	GUIDE	used	262408936	9.66	7402	-0.020	0.093	0.166	0.278	207.154731	26.726554	409.11	-283.72
7	GUIDE	used	262411960	9.66	7397	0.115	-0.214	0.159	0.257	207.327895	25.881727	-1470.23	2171.24

2.4 Star Slots

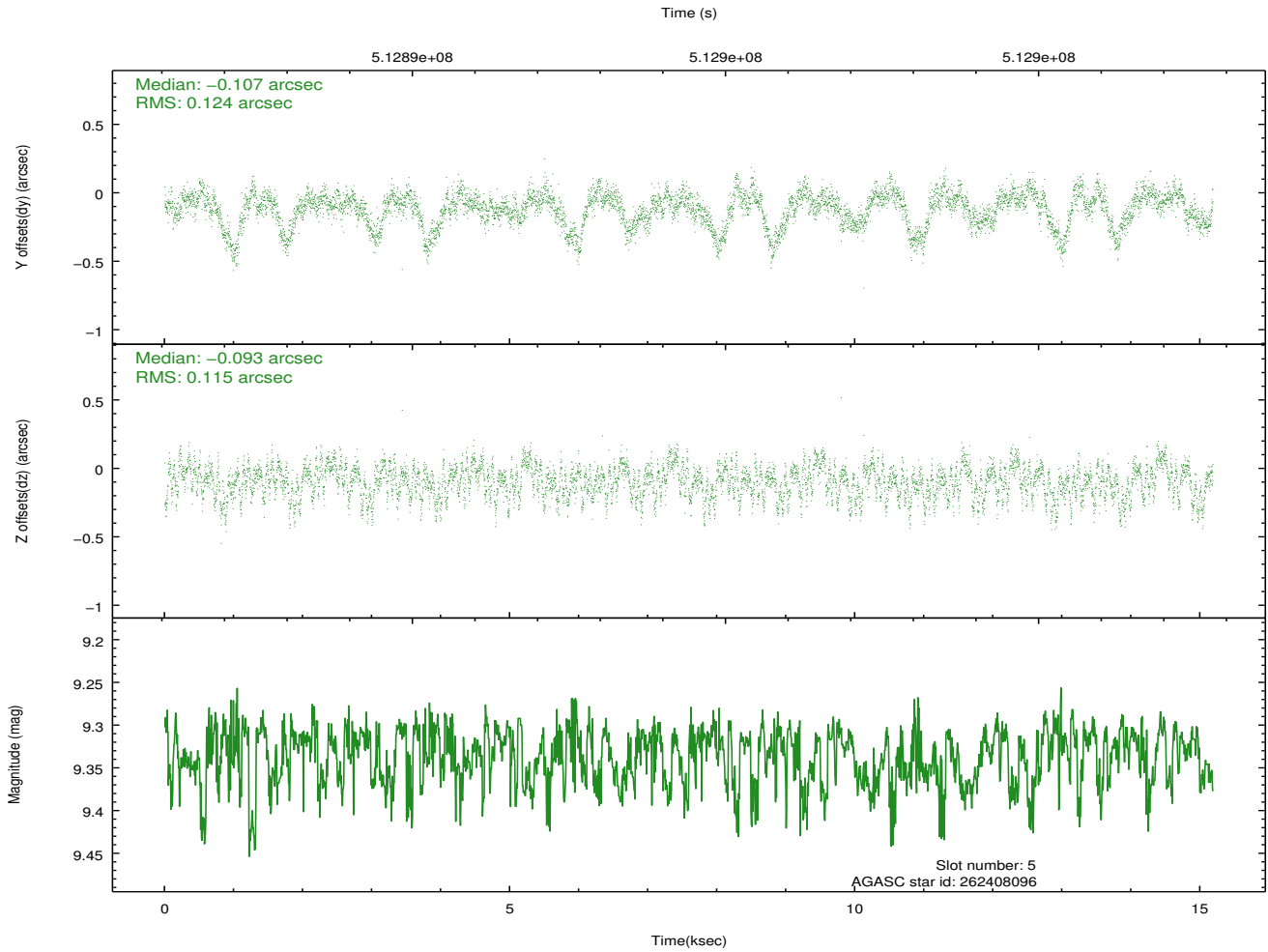
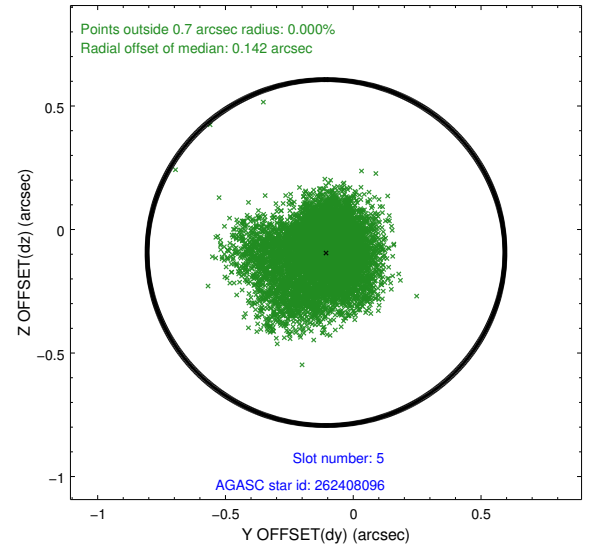
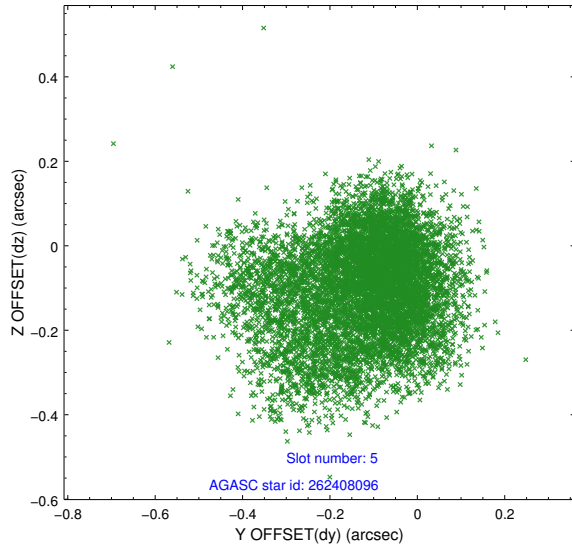
2.4.1 Slot 3



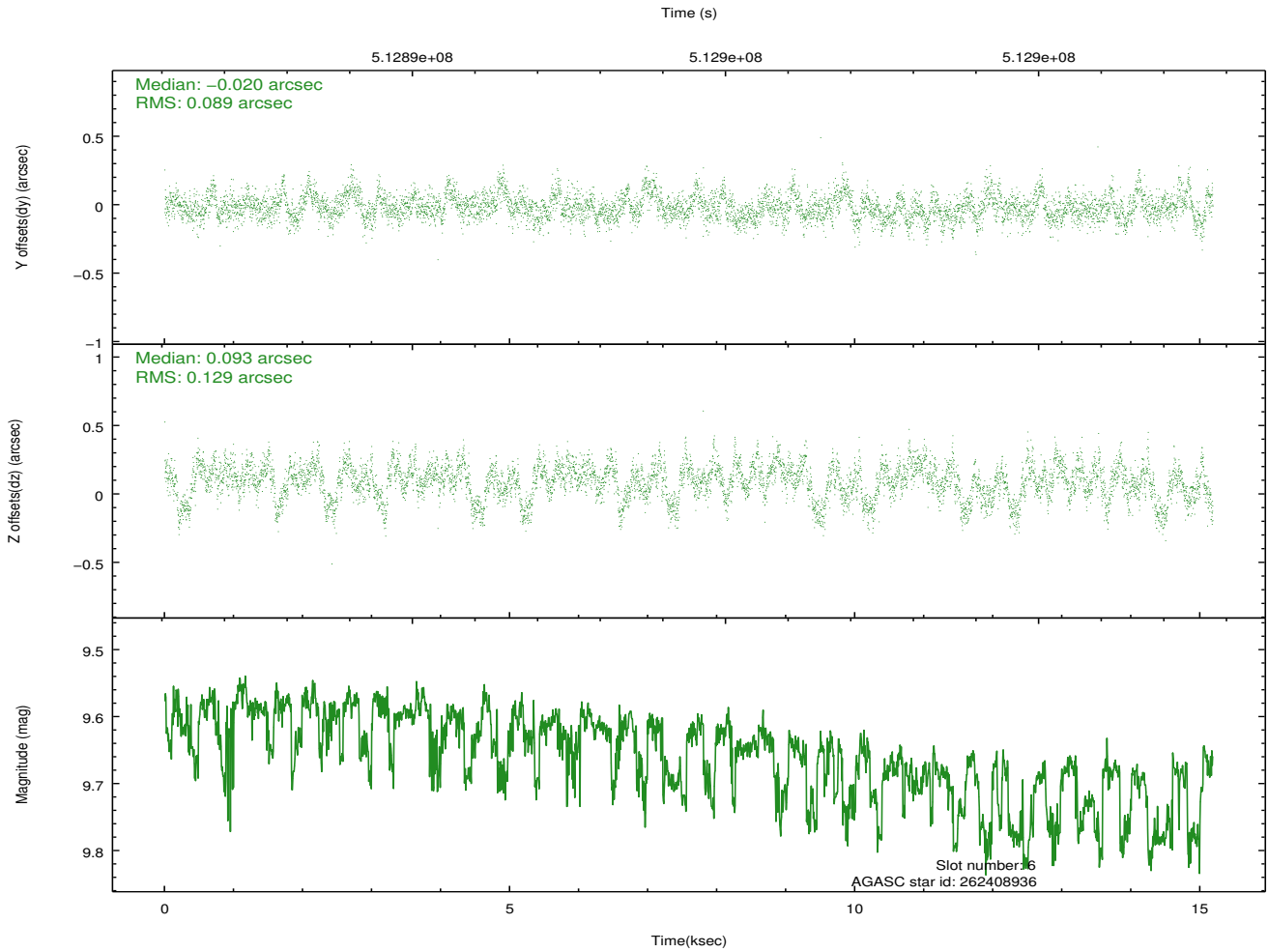
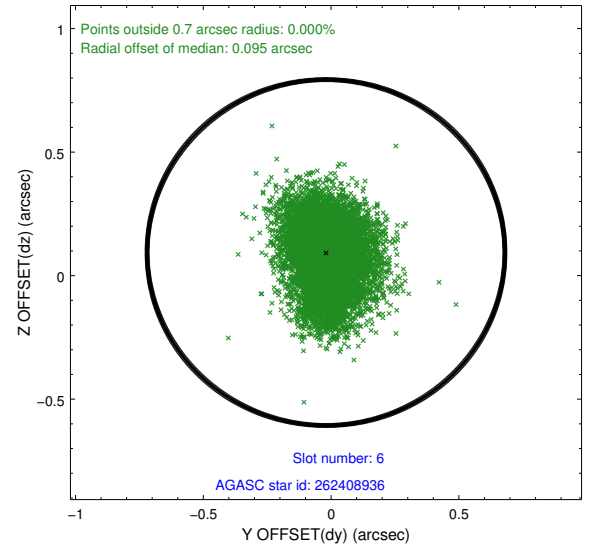
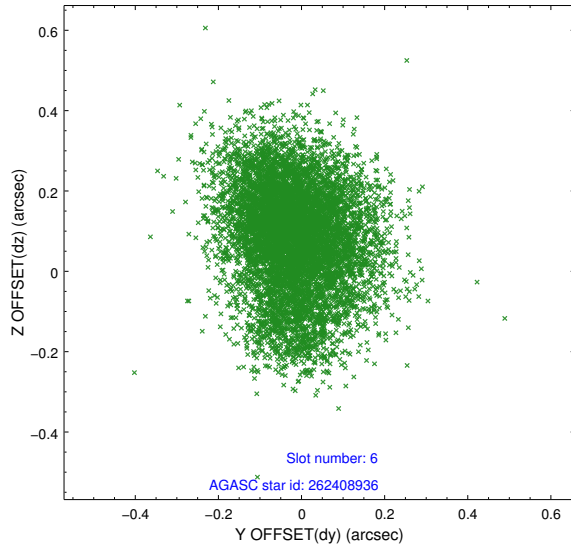
2.4.2 Slot 4



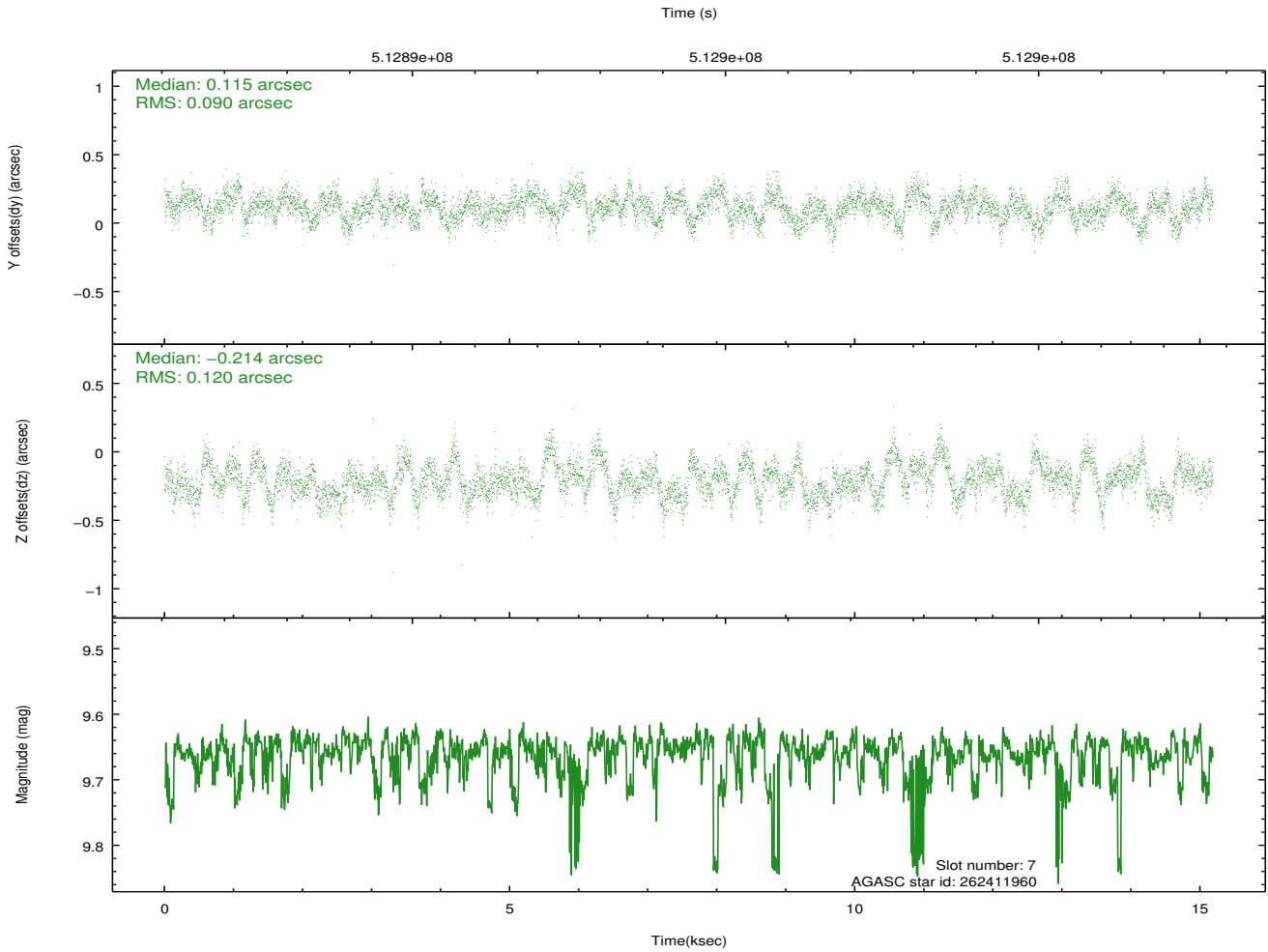
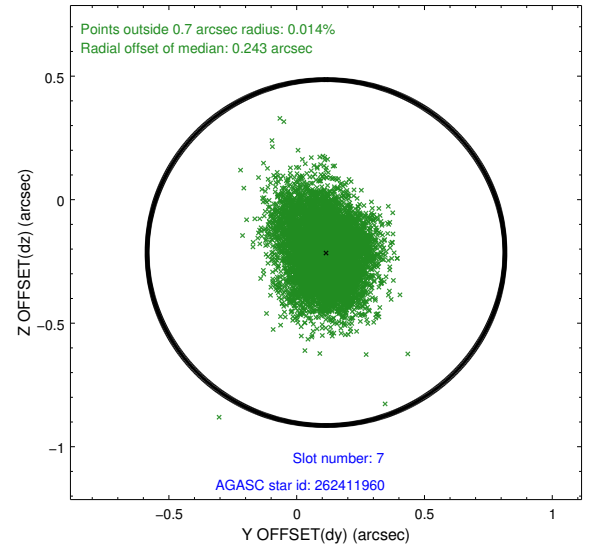
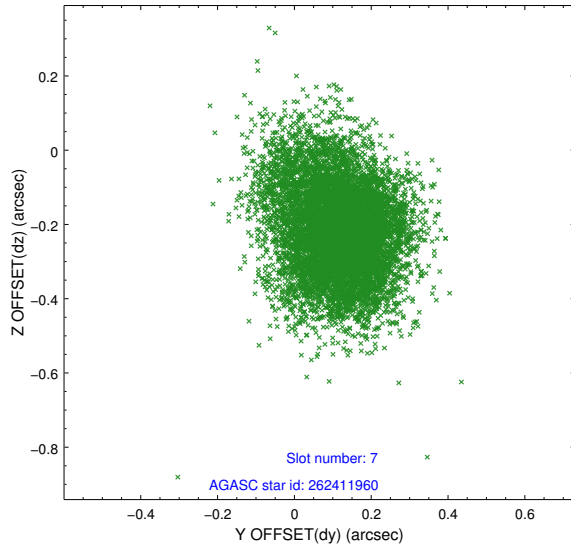
2.4.3 Slot 5



2.4.4 Slot 6

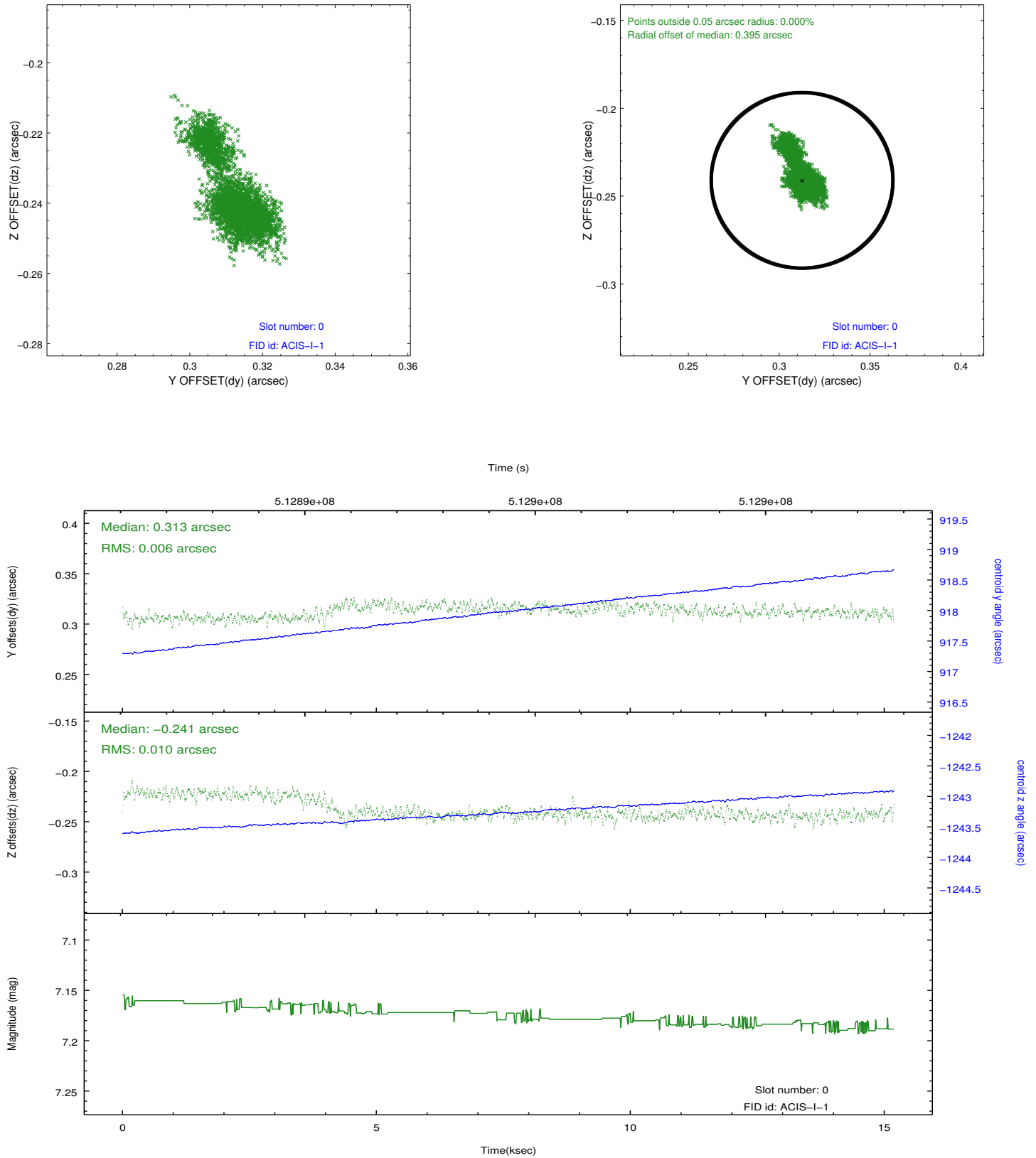


2.4.5 Slot 7

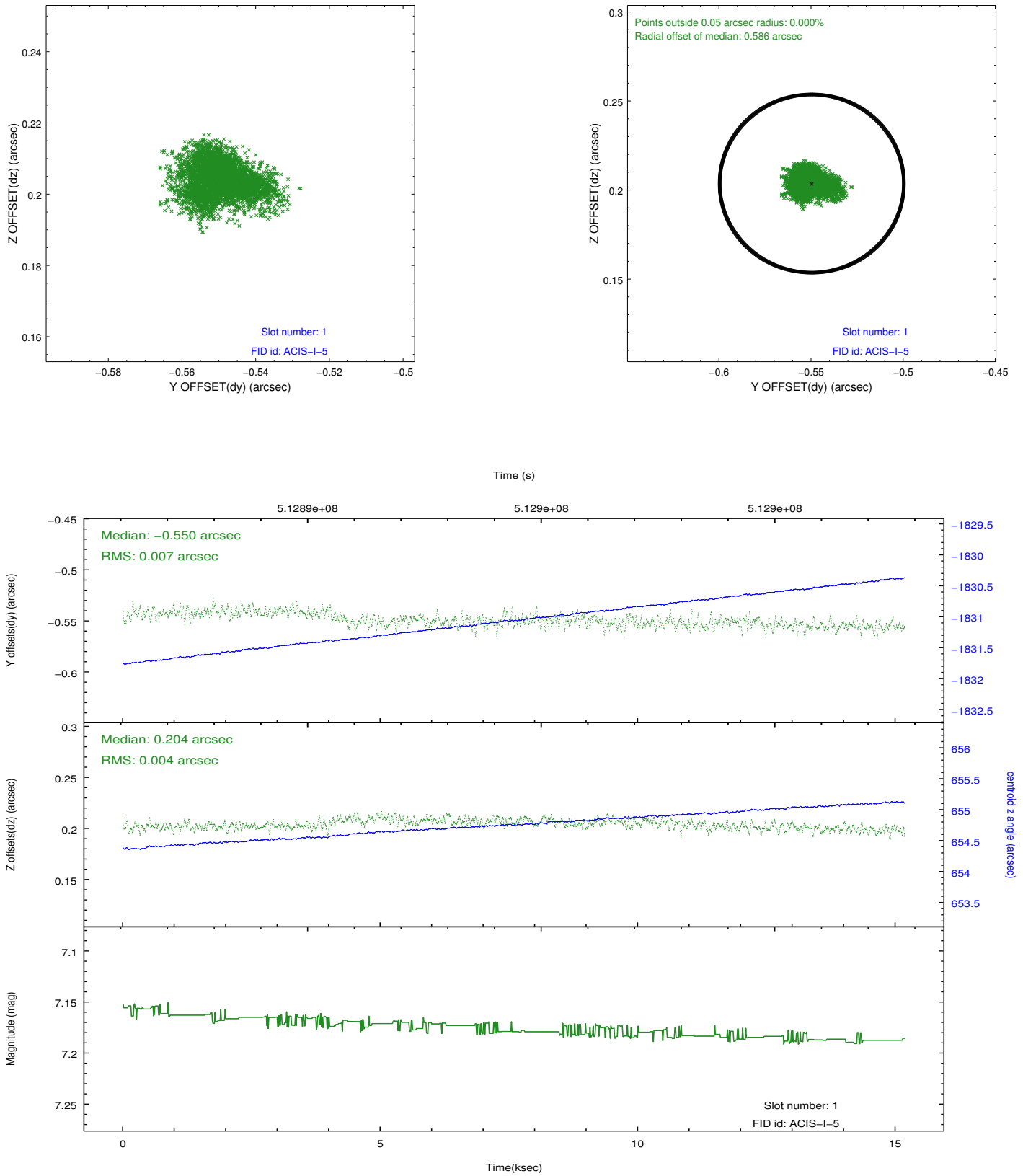


2.5 FID Slots

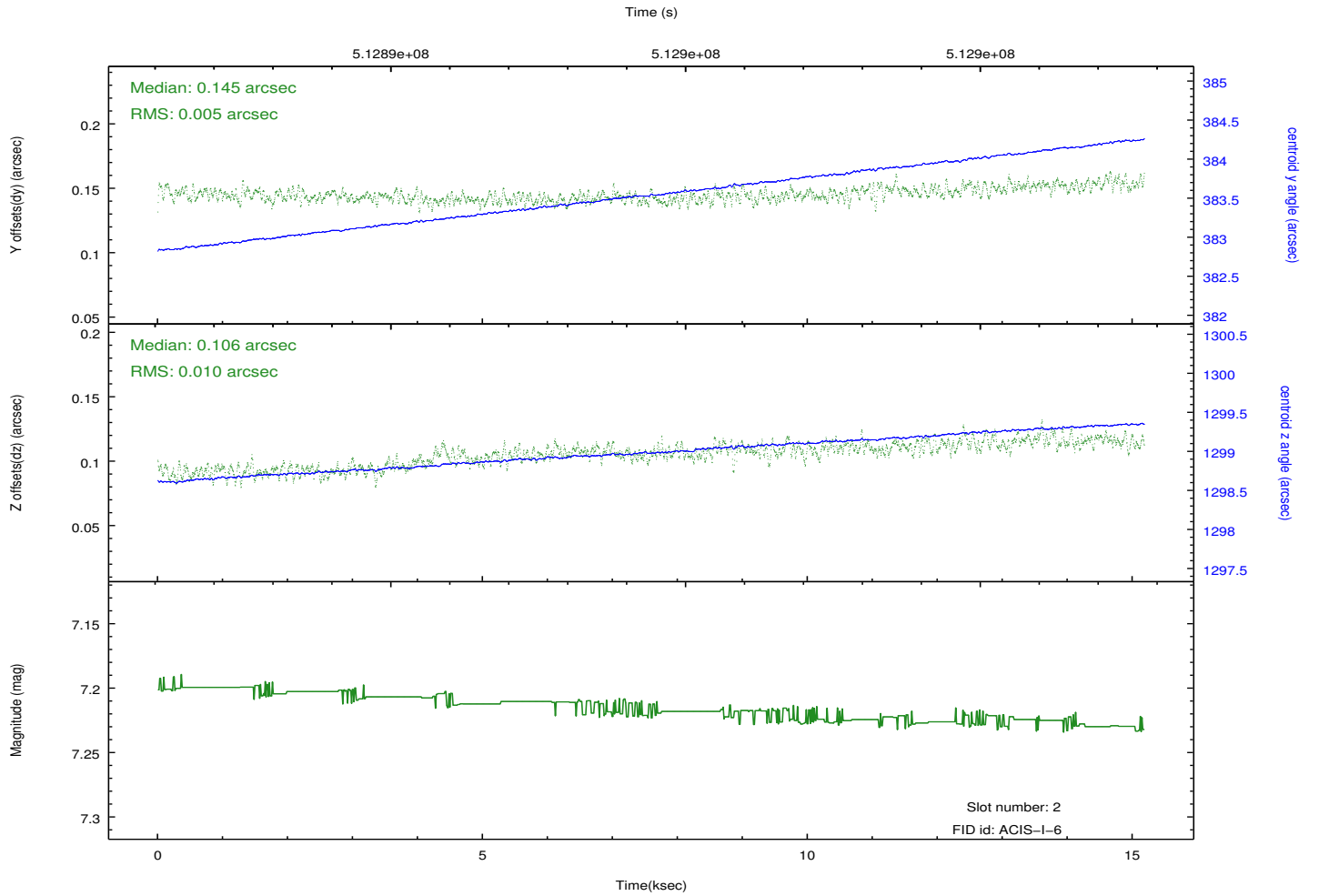
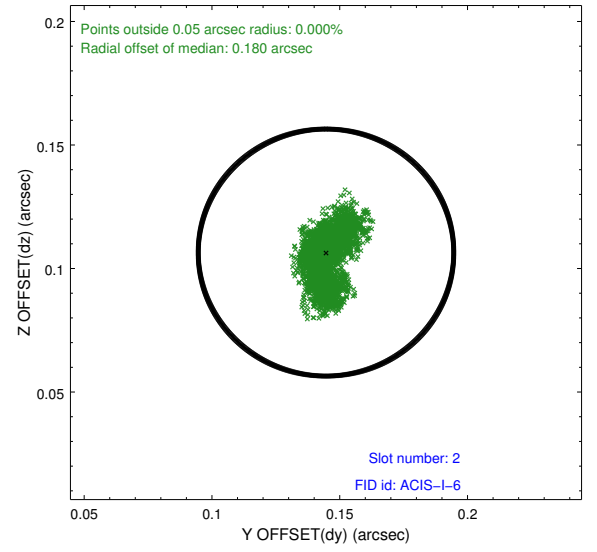
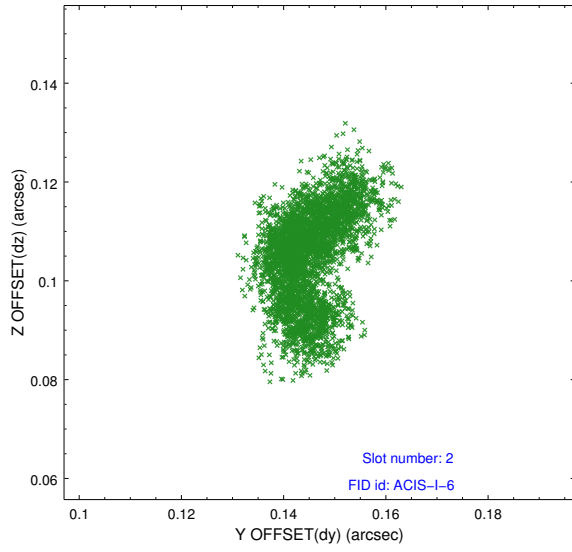
2.5.1 Slot 0



2.5.2 Slot 1



2.5.3 Slot 2



A Summary

A.1 Status

V&V Scientist	Beth Sundheim
V&V Date (YYYY-MM-DD)	2014.12.15
V&V Edition	1
V&V Disposition and Status	OK
V&V Charge Time	14.773973065436

A.2 Comments

Window preference met.

These data have been reprocessed with new aspect alignment calibration files that correct small mean offsets (up to 0.4 arcsecs) and improve overall astrometric accuracy. The new calibration was determined using data from the time period being reprocessed and was performed using cross-correlation of X-ray sources with radio and optical counterparts.