

# V&V Reference Report

## L2 ASCDS Version : 8.5.1.1

Observation 15489 - L2 Version 2  
Chandra X-Ray Center

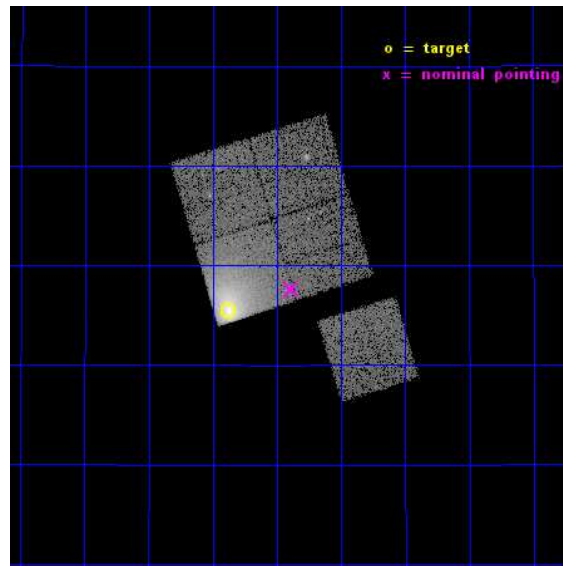
L2 Processing Date : Dec 2 2014

## Contents

<b>1</b>	<b>Front</b>	<b>2</b>
<b>2</b>	<b>OBI</b>	<b>3</b>
2.1	OBI . . . . .	3
2.1.1	Images . . . . .	3
2.1.2	Bias . . . . .	3
2.1.3	Parameters . . . . .	4
2.1.4	Events . . . . .	4
2.2	Compared Parameters . . . . .	5
2.3	Aspect . . . . .	6
2.4	Star Slots . . . . .	9
2.4.1	Slot 3 . . . . .	9
2.4.2	Slot 4 . . . . .	10
2.4.3	Slot 5 . . . . .	11
2.4.4	Slot 6 . . . . .	12
2.4.5	Slot 7 . . . . .	13
2.5	FID Slots . . . . .	14
2.5.1	Slot 0 . . . . .	14
2.5.2	Slot 1 . . . . .	15
2.5.3	Slot 2 . . . . .	16
<b>A</b>	<b>Summary</b>	<b>17</b>
A.1	Status . . . . .	17
A.2	Comments . . . . .	17

# 1 Front

seq_num	890075	Sequence number
obs_id	15489	Observation id
title	AO-14 Calibration Observations of A1795	Proposal title
observer	Dr. CXC Calibration	Principal investigator
object	A1795	Source name
dtcycle	0	&#160
cycle	P	events from which exps? Prim/Second/Both
ra_targ	207.219583	Observer's specified target RA [deg]
dec_targ	26.590833	Observer's specified target Dec [deg]
ra_nom	207.09695219966	Nominal RA [deg]
dec_nom	26.626848767849	Nominal Dec [deg]
roll_nom	162.90969374972	Nominal Roll [deg]
revision	2	Processing version of data
ontime	14771.190767705	Sum of GTIs [s]
livetime	14578.194285933	Livetime [s]
ontime0	14771.067647696	Sum of GTIs [s]
ontime1	14767.96763736	Sum of GTIs [s]
ontime2	14771.149727702	Sum of GTIs [s]
ontime3	14771.190767705	Sum of GTIs [s]
ontime6	14771.026607692	Sum of GTIs [s]
l2events	106911	Number of level 2 events

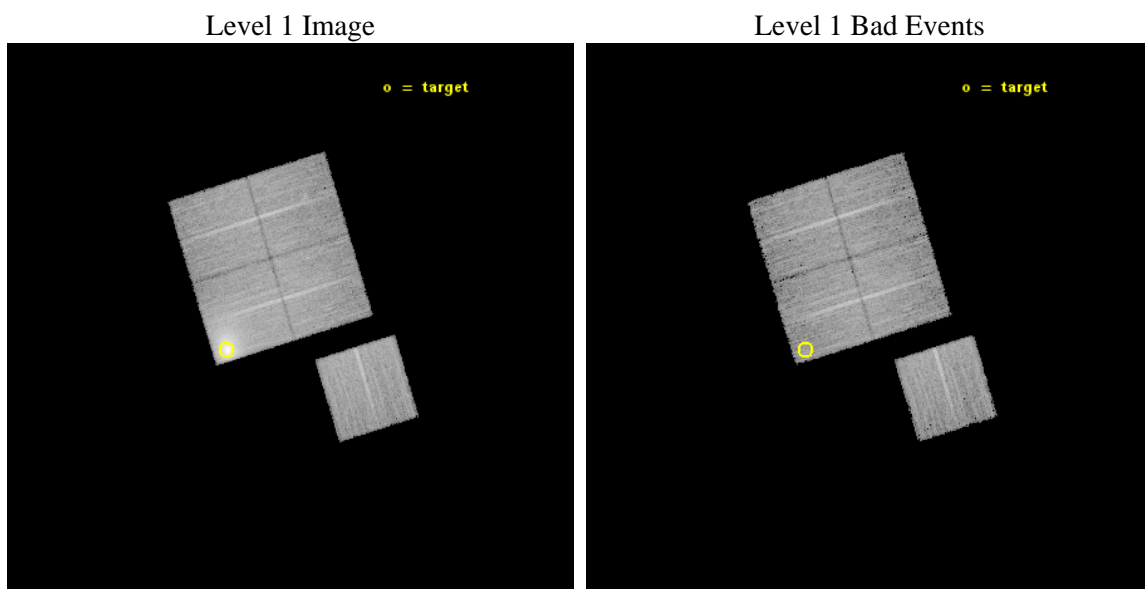




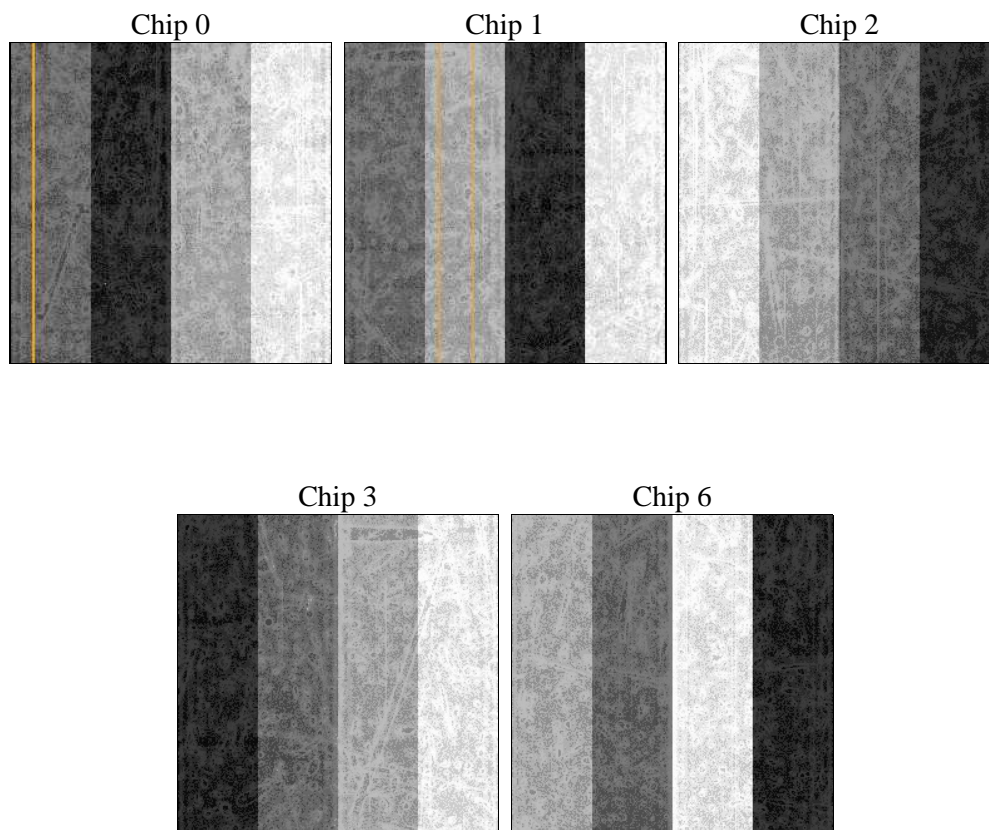
## 2 OBI

### 2.1 OBI

#### 2.1.1 Images



#### 2.1.2 Bias



### 2.1.3 Parameters

obi_num	0	Obi number	sched_exp_time	15000.000000	[s] Scheduled observation exposure time
ascdsver	10.3	Processing system revision	ontime	14771.190767705	Sum of GTIs [s]
caldbver	4.6.4	&#160	ontime0	14771.067647696	Sum of GTIs [s]
date	2014-12-02T15:19:10	Date and time of file creation	ontime1	14767.96763736	Sum of GTIs [s]
revision	2	Processing version of data	ontime2	14771.149727702	Sum of GTIs [s]
			ontime3	14771.190767705	Sum of GTIs [s]
			ontime6	14771.026607692	Sum of GTIs [s]
			l1events	452775	Number of level 1 events

### 2.1.4 Events

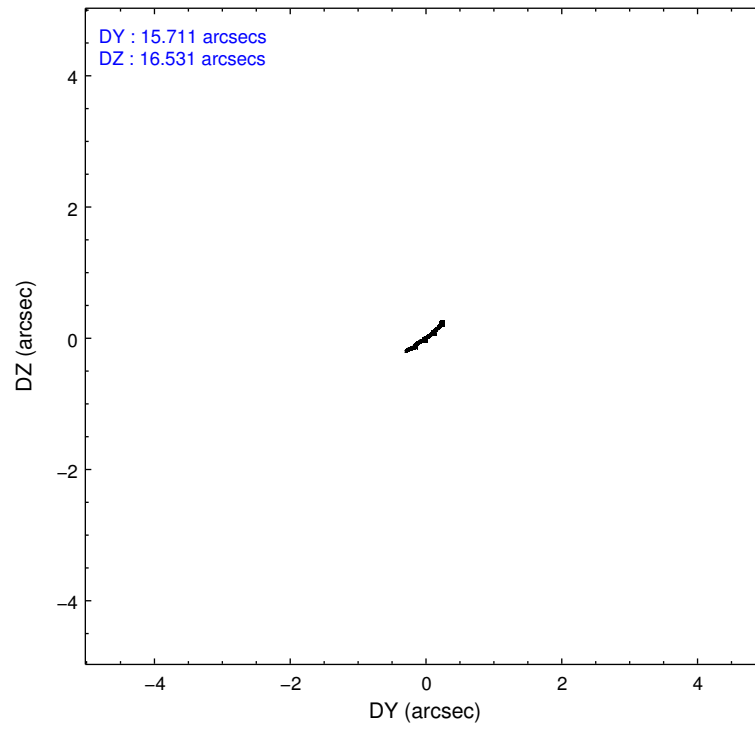
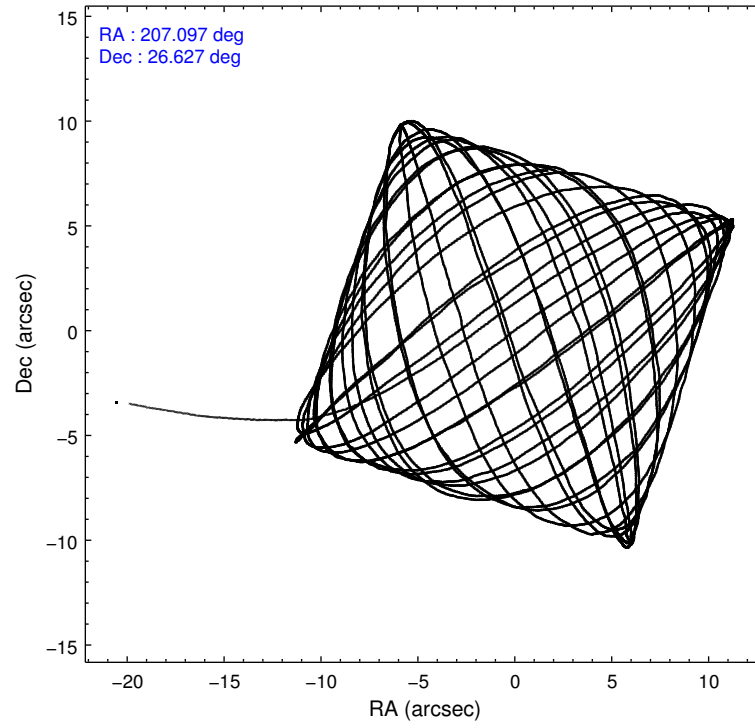
	ccd 0	ccd 1	ccd 2	ccd 3	ccd 6
level 1 events	70336	76383	80498	145038	80520
rejected events	60701	64732	70059	71253	70634
rejected %	86%	84%	87%	49%	87%

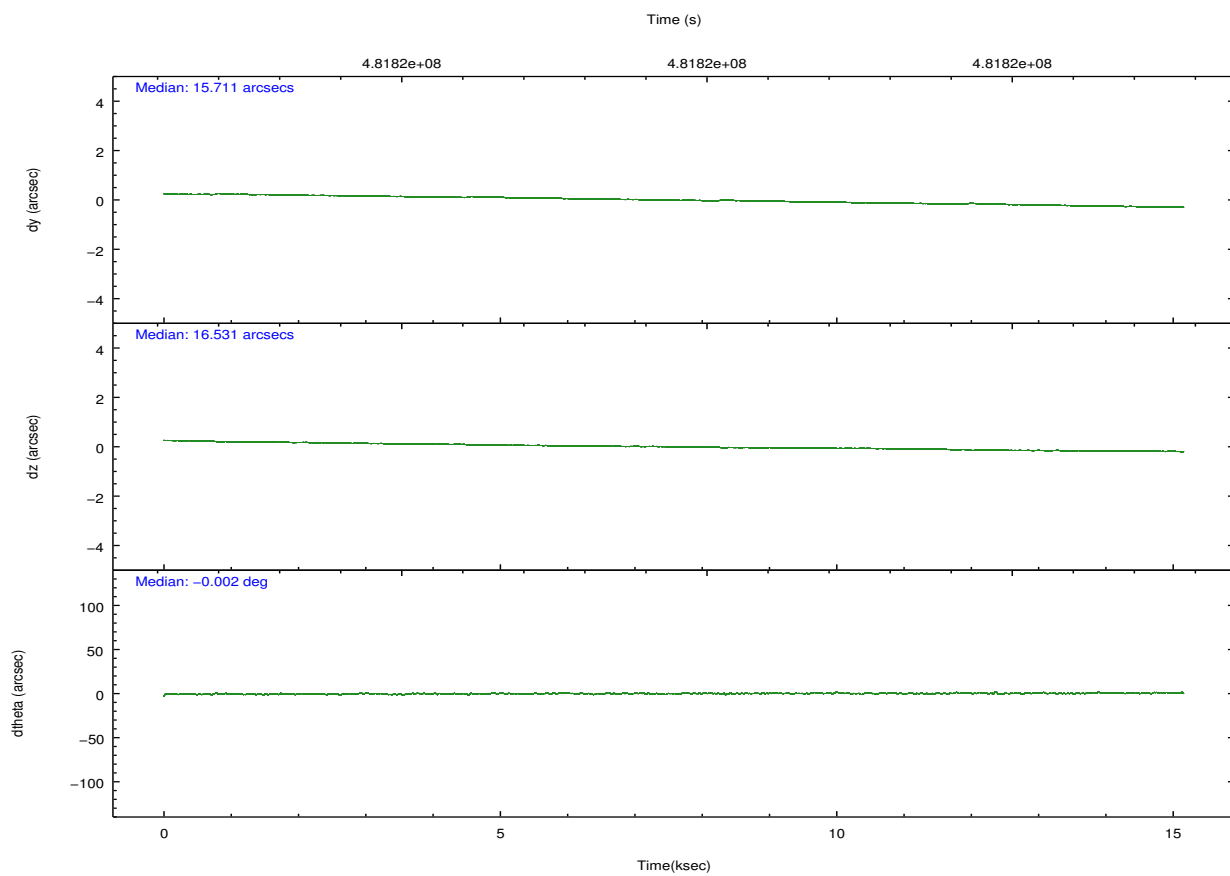
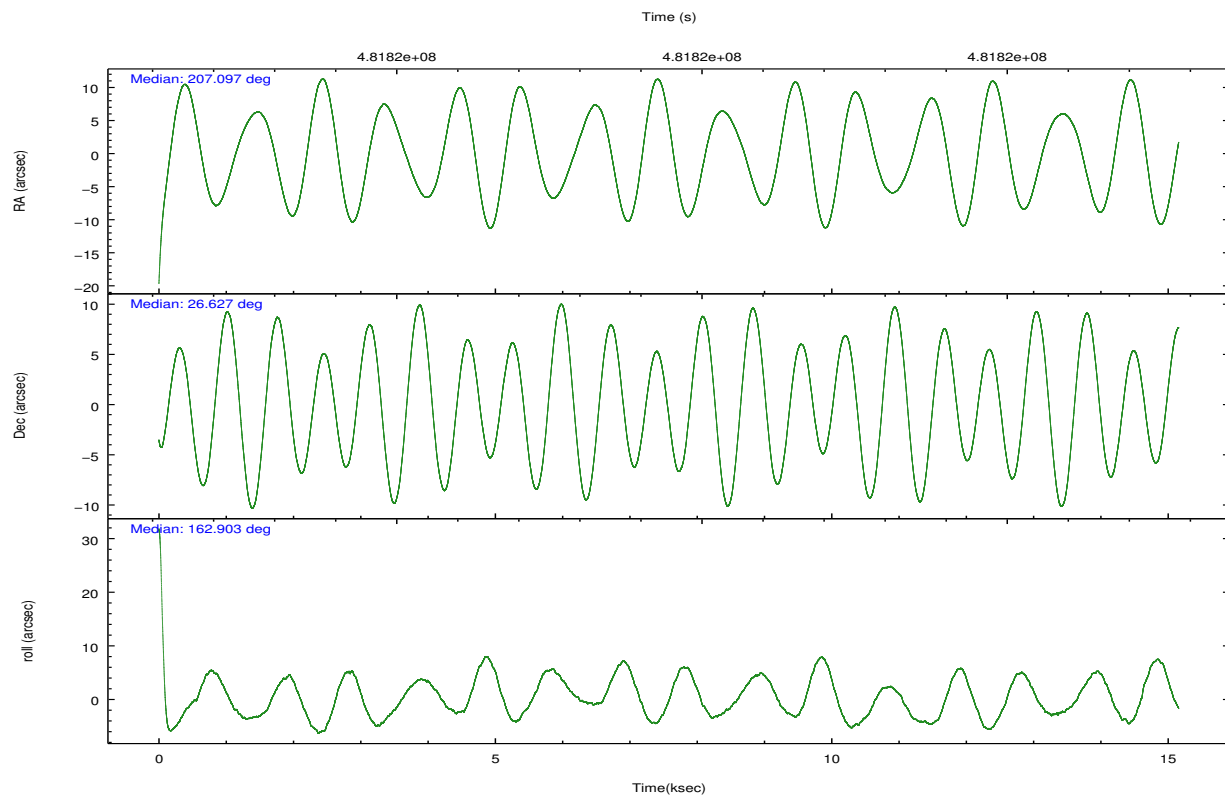
	ccd 0	ccd 1	ccd 2	ccd 3	ccd 6
grade 0 events	3605	4725	4234	54827	3468
	5%	6%	5%	37%	4%
grade 1 events	46	39	49	255	46
	0%	0%	0%	0%	0%
grade 2 events	2358	2580	2419	8920	2241
	3%	3%	3%	6%	2%
grade 3 events	948	1014	972	3181	1009
	1%	1%	1%	2%	1%
grade 4 events	877	1033	954	3090	958
	1%	1%	1%	2%	1%
grade 5 events	3594	4020	3398	4414	4164
	5%	5%	4%	3%	5%
grade 6 events	1851	2303	1860	3789	2214
	2%	3%	2%	2%	2%
grade 7 events	57057	60669	66612	66562	66420
	81%	79%	82%	45%	82%

## 2.2 Compared Parameters

Parameter	Planned	Actual	Parameter	Planned	Actual
Instrument	ACIS	ACIS	Obspar format version number	7	7
Detector	ACIS-01236	ACIS-01236	Obspar file type	PREDICTED	ACTUAL
Grating	NONE	NONE	Obspar update status	NONE	UPDATED
Data mode	VFAINT	VFAINT	Number of optional ACIS chips dropped	0	0
Observation mode	POINTING	POINTING	On-chip summing requested	N	N
[deg] Pointing RA	207.126932	207.0969521996601	Subarray requested	NONE	NONE
[deg] Pointing Dec	26.633090	26.62684876784946	Alternating exposures requested	N	N
[deg] Pointing Roll	162.687536	162.9096937497173	[s] Primary exposure time	0.000000	3.1
[mm] SIM focus pos	-0.782348	-0.7809083437167272			
[mm] SIM defocus	0	0.001439871863259334			
[mm] SIM translation stage pos	-214.092463	-214.0989765584371			
[mm] SIM translation stage offset	-19.5	-19.49347644449256			
[s] Observation start time (MET)	481812027.184000	481810431.10893			
Observation start date	2013-04-08T12:39:20	2013-04-08T12:13:51			
[s] Observation end time (MET)	481827027.184000	481828382.4474			
Observation end date	2013-04-08T16:49:20	2013-04-08T17:13:02			
Read mode	TIMED	TIMED			

## 2.3 Aspect



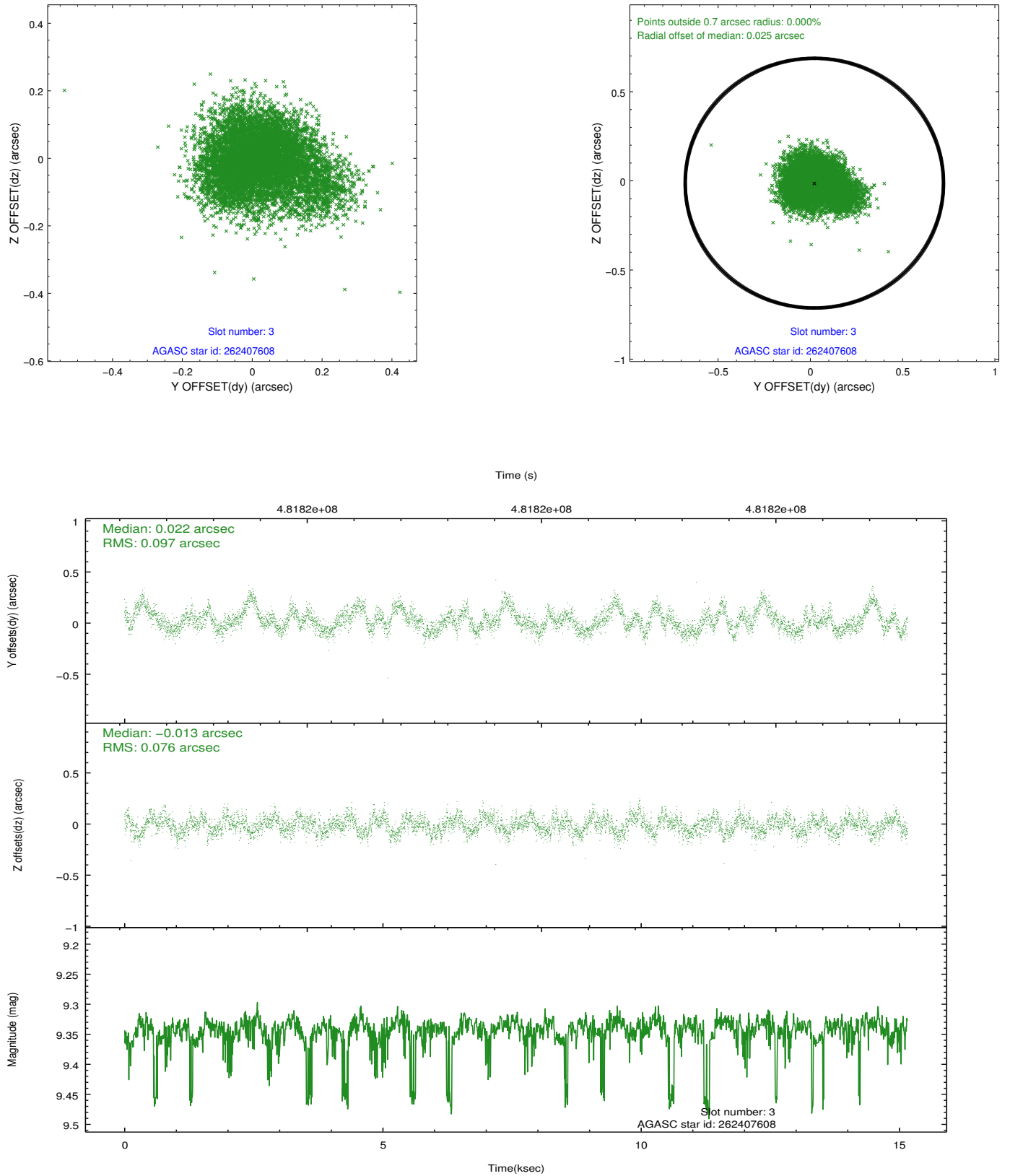


### Slot Statistics

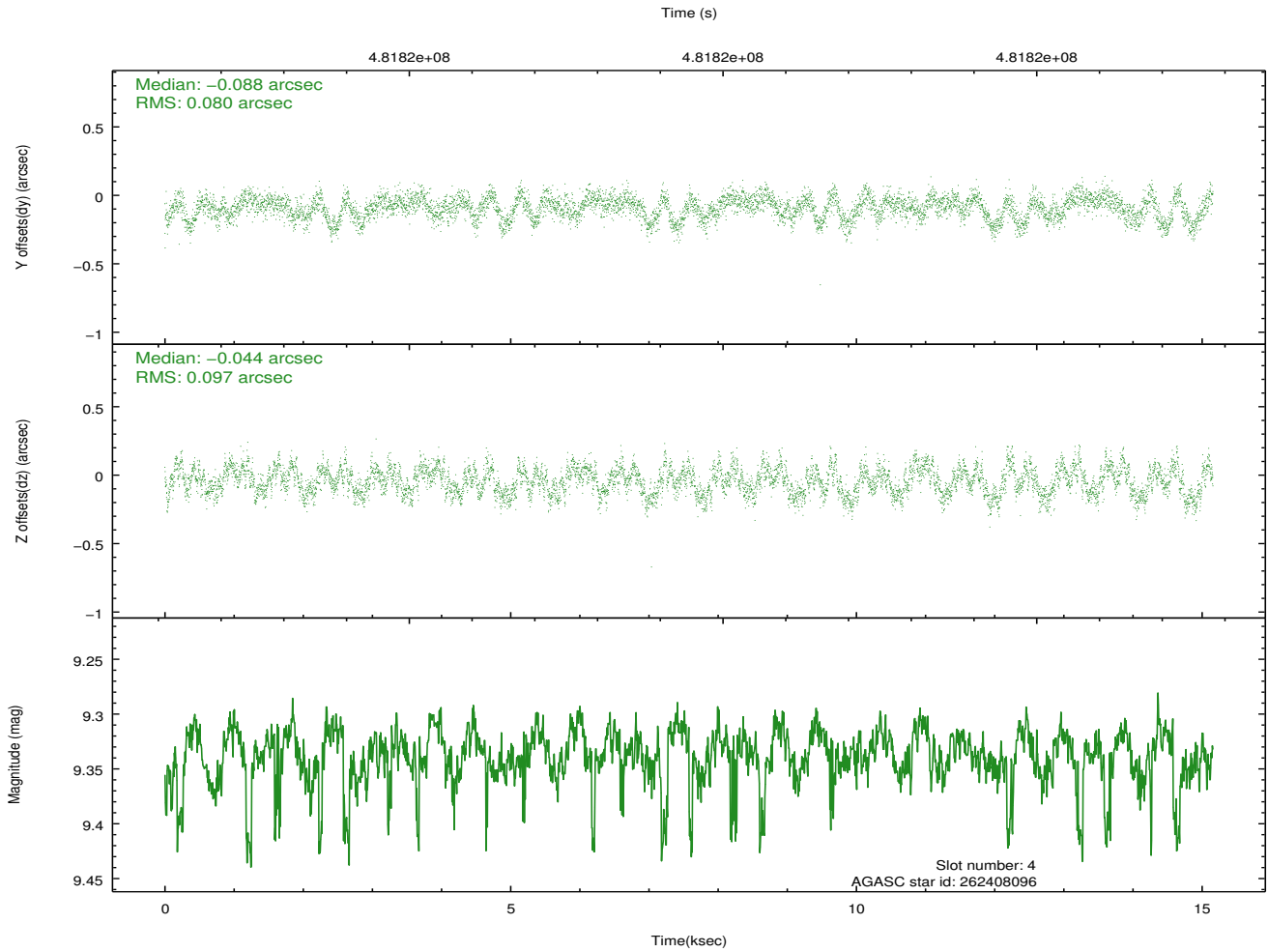
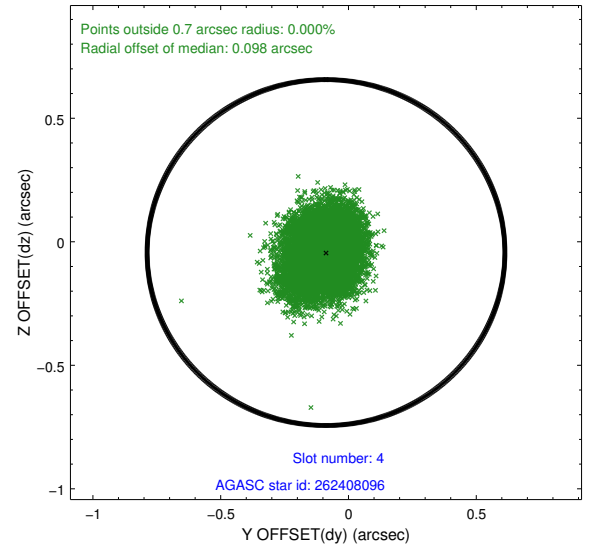
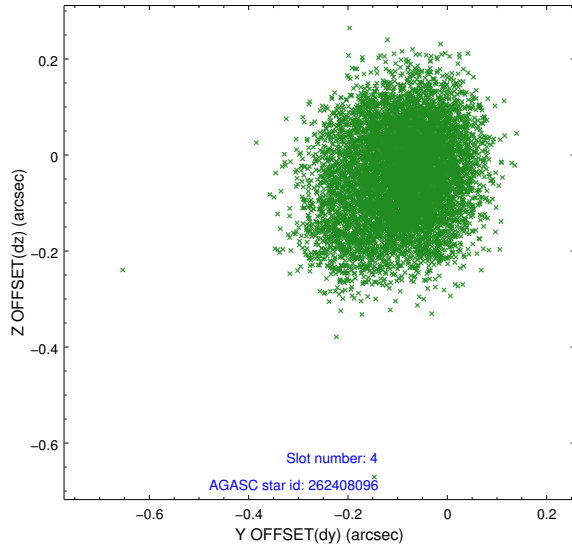
slot	status	used	id	mag	n_pts	med_dy	med_dz	dr1	dr2	ra	dec	mean_y	mean_z
0	FID		ACIS-I-1	7.11	3697	0.274	-0.217	0.010	0.017	0.000000	0.000000	923.65	-1240.72
1	FID		ACIS-I-5	7.11	3698	-0.500	0.180	0.007	0.012	0.000000	0.000000	-1825.07	656.89
2	FID		ACIS-I-6	7.16	3697	0.134	0.109	0.009	0.015	0.000000	0.000000	388.72	1301.68
3	GUIDE	used	262407608	9.34	7340	0.022	-0.013	0.131	0.215	207.378401	26.435507	-985.36	437.29
4	GUIDE	used	262408096	9.34	7386	-0.088	-0.044	0.136	0.211	207.011678	26.515421	228.85	515.04
5	GUIDE	used	262409552	8.18	7326	0.003	0.066	0.083	0.135	206.584269	27.192805	2260.23	-1409.28
6	GUIDE	used	262408512	8.00	7394	-0.008	0.218	0.080	0.125	207.800210	27.128796	-1525.96	-2350.98
7	GUIDE	used	262411960	9.66	7391	0.065	-0.231	0.158	0.243	207.327895	25.881727	-1426.47	2387.79

## 2.4 Star Slots

### 2.4.1 Slot 3

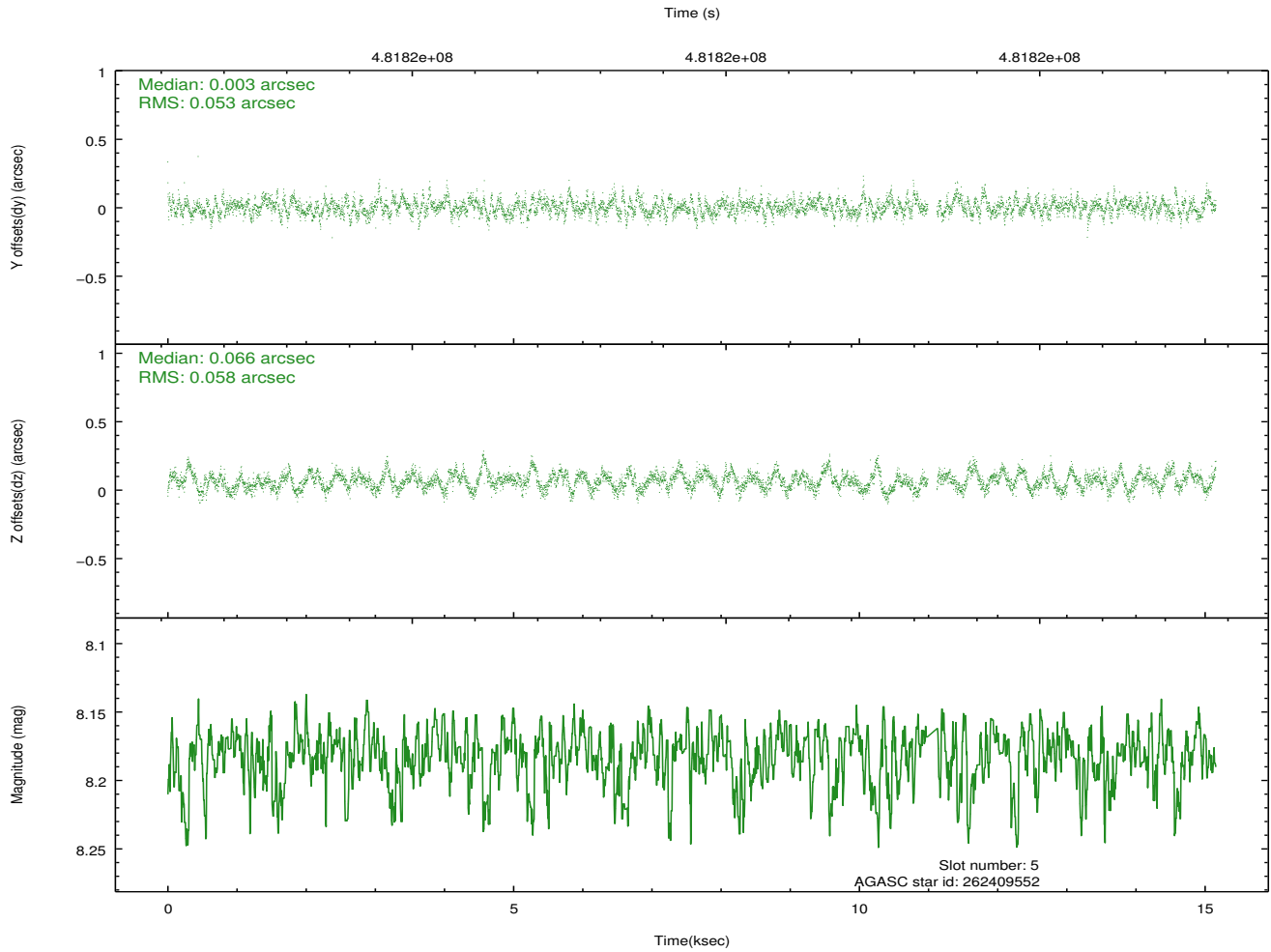
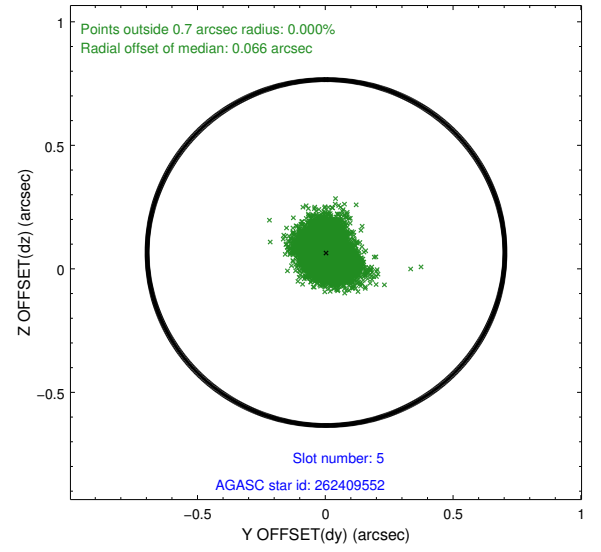
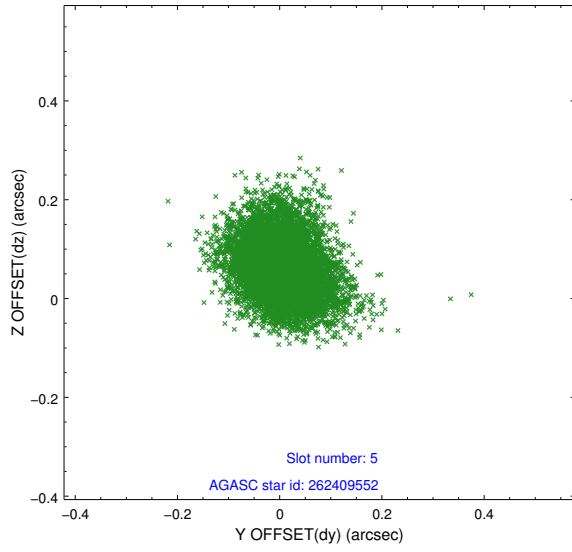


## 2.4.2 Slot 4

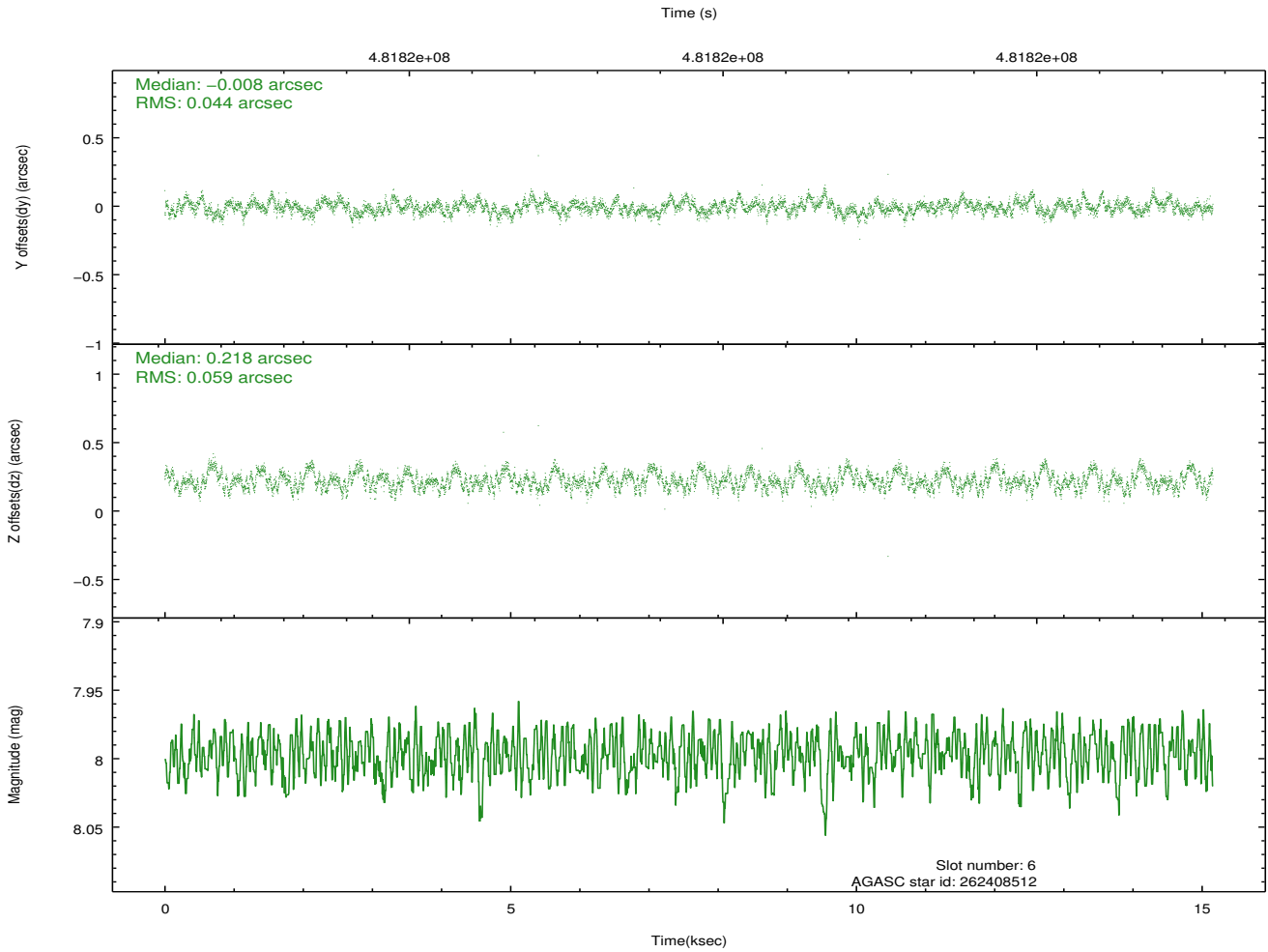
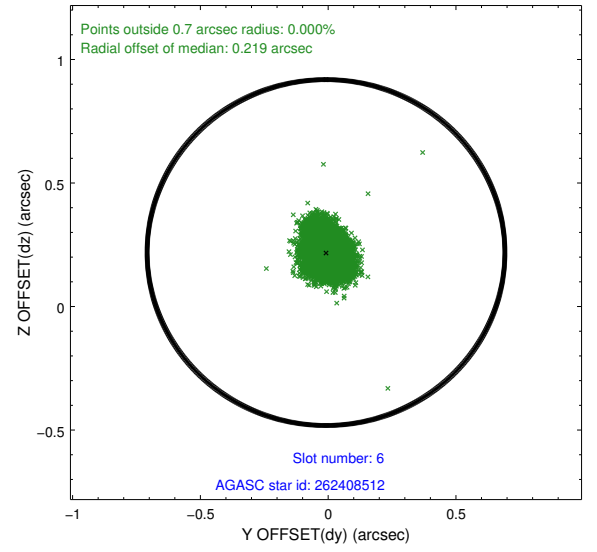
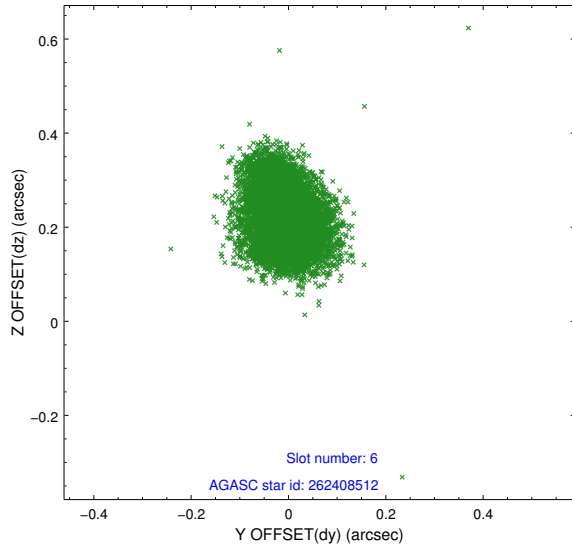




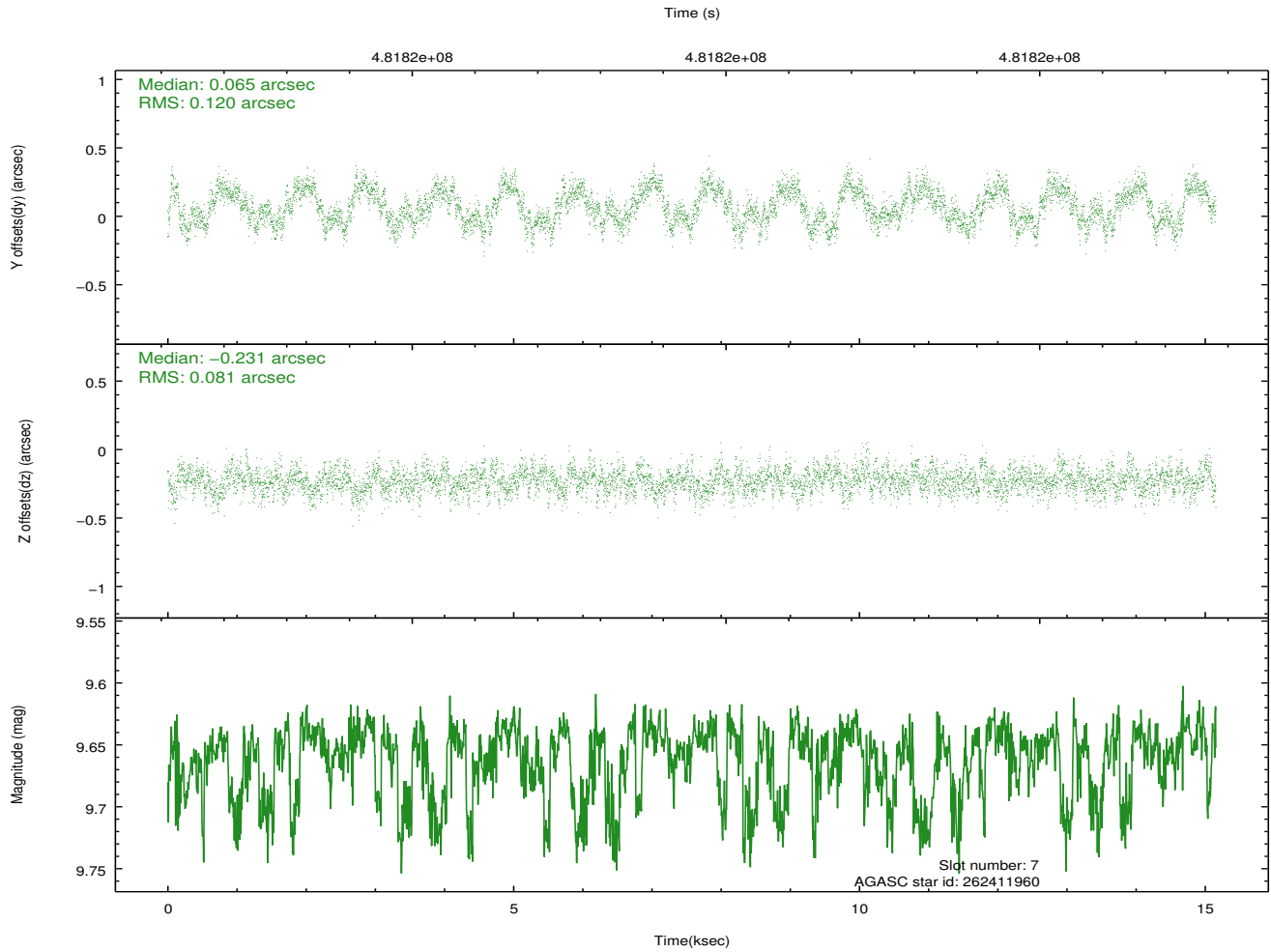
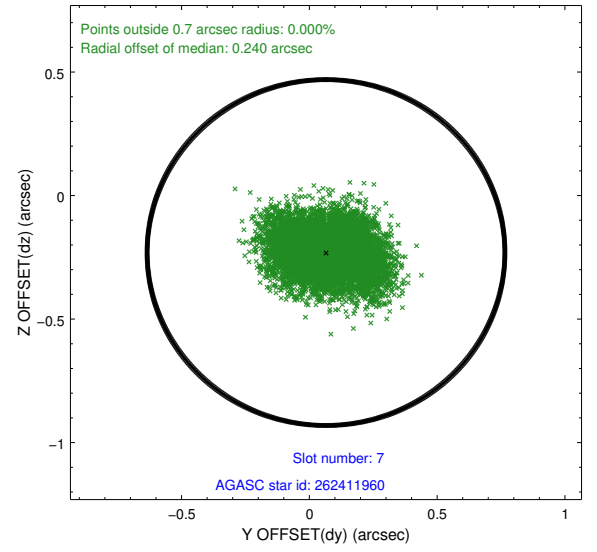
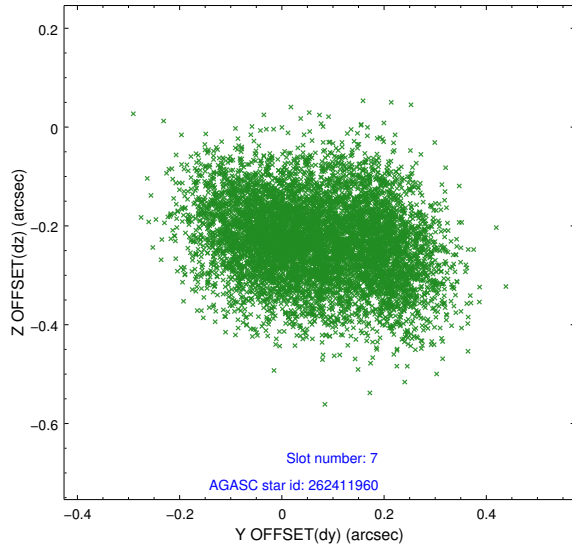
### 2.4.3 Slot 5



## 2.4.4 Slot 6

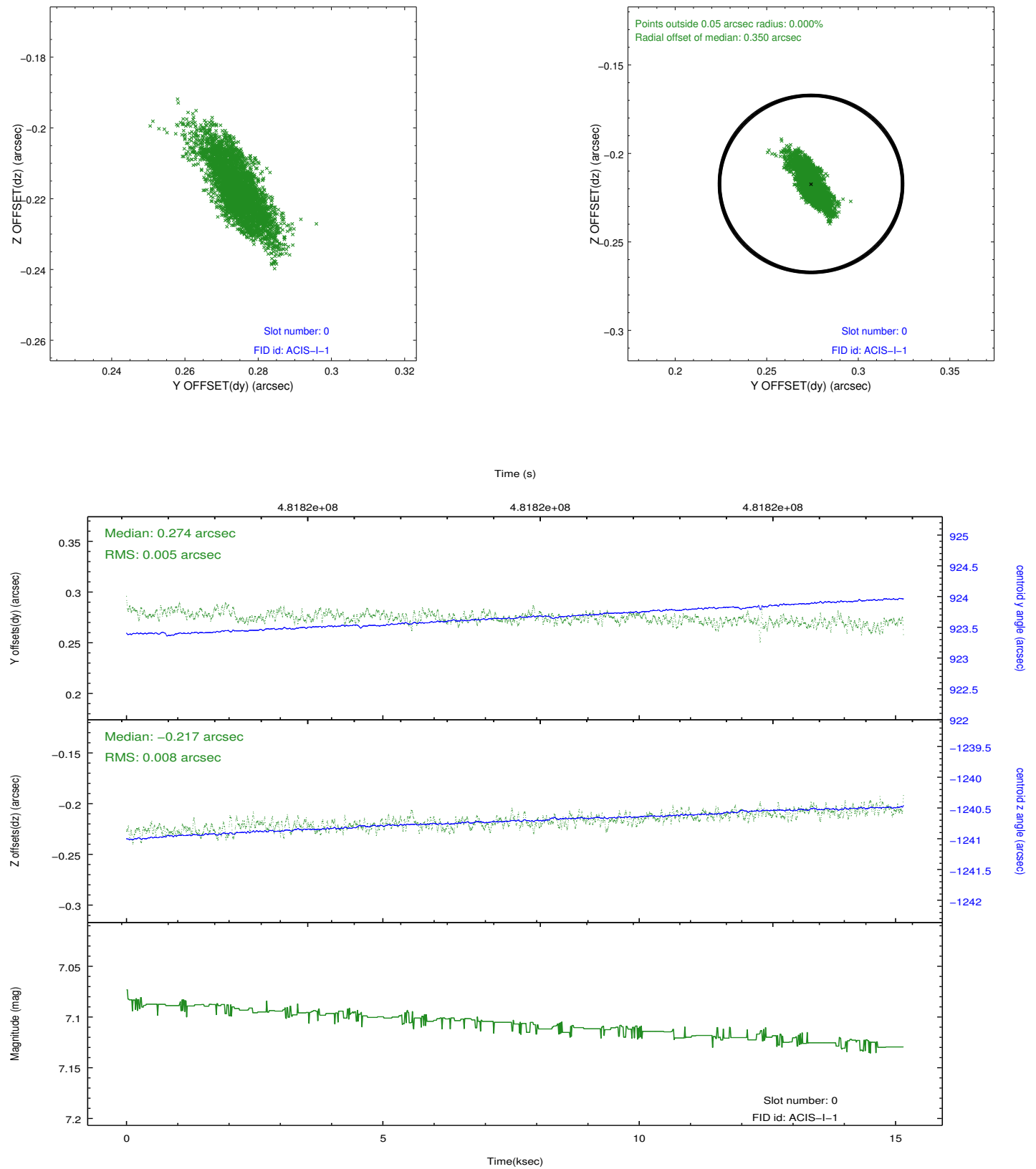


## 2.4.5 Slot 7

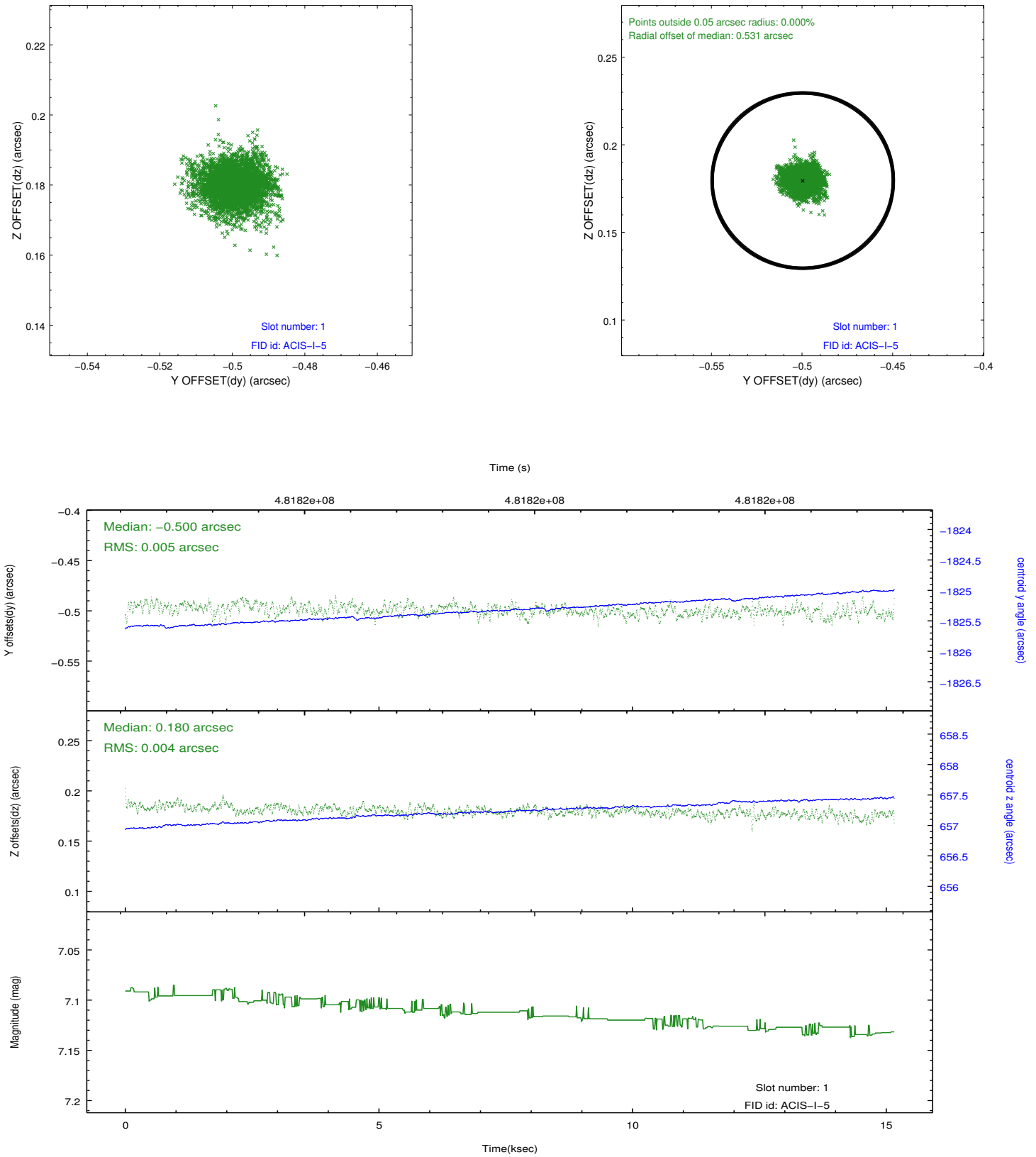


## 2.5 FID Slots

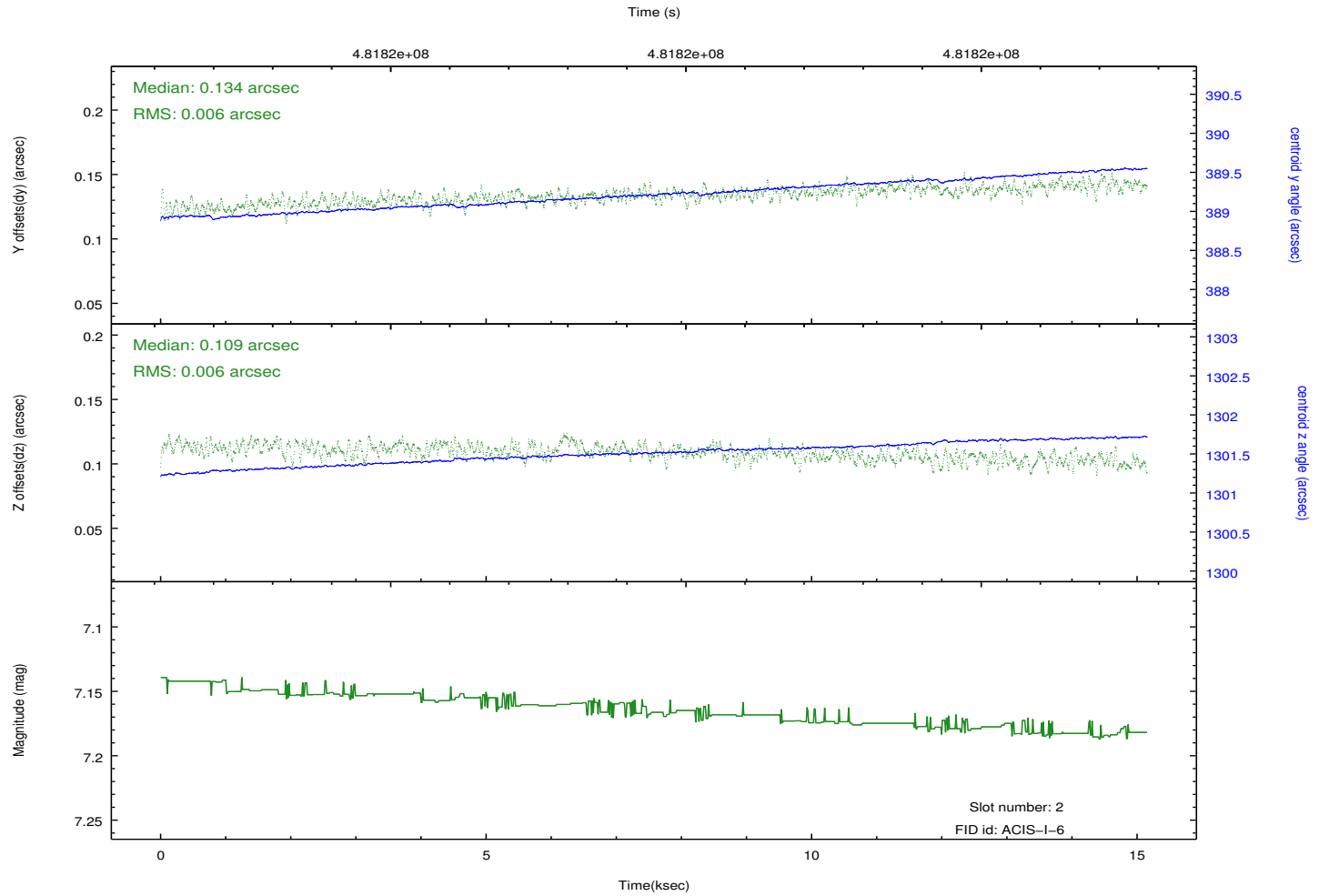
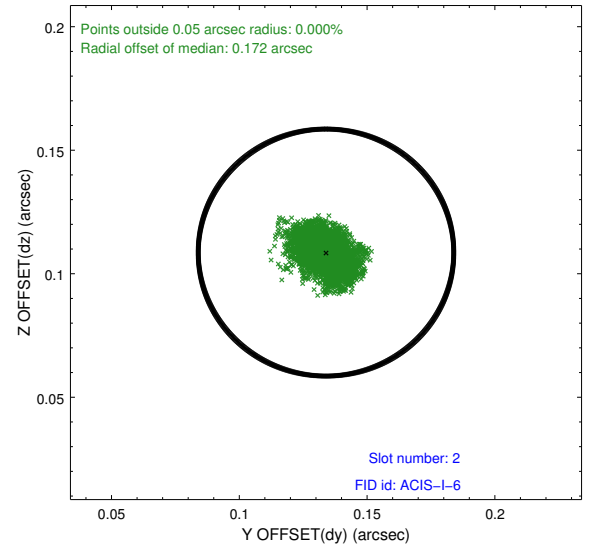
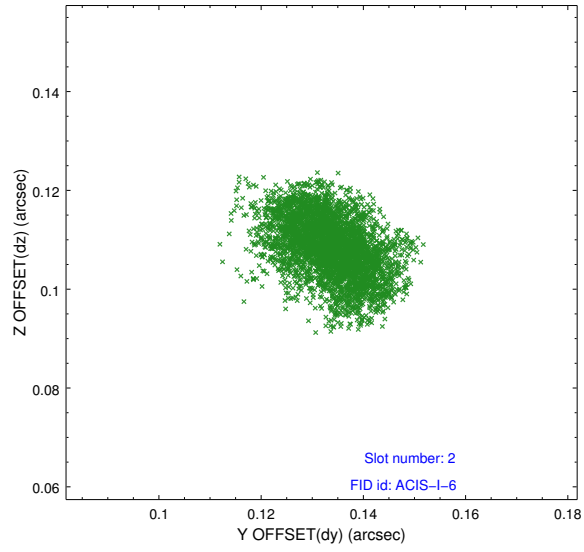
### 2.5.1 Slot 0



## 2.5.2 Slot 1



### 2.5.3 Slot 2



# A Summary

## A.1 Status

V&V Scientist	Beth Sundheim
V&V Date (YYYY-MM-DD)	2014.12.10
V&V Edition	1
V&V Disposition and Status	OK
V&V Charge Time	14.771190767705

## A.2 Comments

These data have been reprocessed with new aspect alignment calibration files that correct small mean offsets (up to 0.4 arcsecs) and improve overall astrometric accuracy. The new calibration was determined using data from the time period being reprocessed and was performed using cross-correlation of X-ray sources with radio and optical counterparts.