

V&V Reference Report

L2 ASCDS Version : 8.4.4

Observation 14422 - L2 Version 3
Chandra X-Ray Center

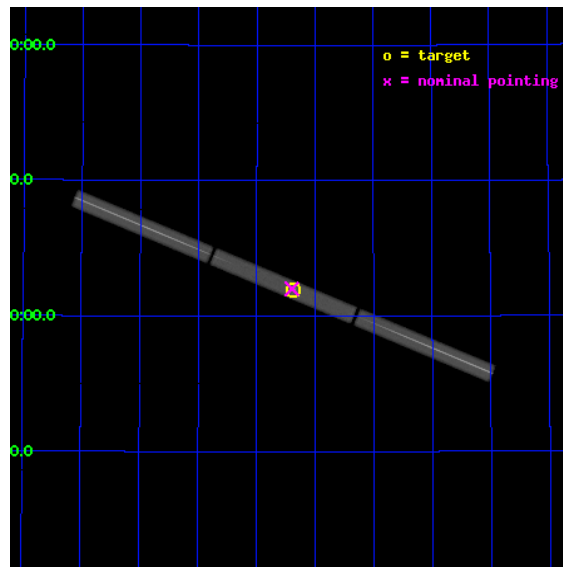
L2 Processing Date : Aug 9 2012

Contents

1	Front	2
2	OBI	3
2.1	OBI	3
2.1.1	Images	3
2.1.2	Parameters	4
2.1.3	Events	4
2.2	Compared Parameters	5
2.3	Aspect	6
2.4	Star Slots	9
2.4.1	Slot 3	9
2.4.2	Slot 4	10
2.4.3	Slot 5	11
2.4.4	Slot 6	12
2.4.5	Slot 7	13
2.5	FID Slots	14
2.5.1	Slot 0	14
2.5.2	Slot 1	15
2.5.3	Slot 2	16
3	Gratings	17
3.1	LETG Arm	17
A	Summary	19
A.1	Status	19
A.2	Comments	19

1 Front

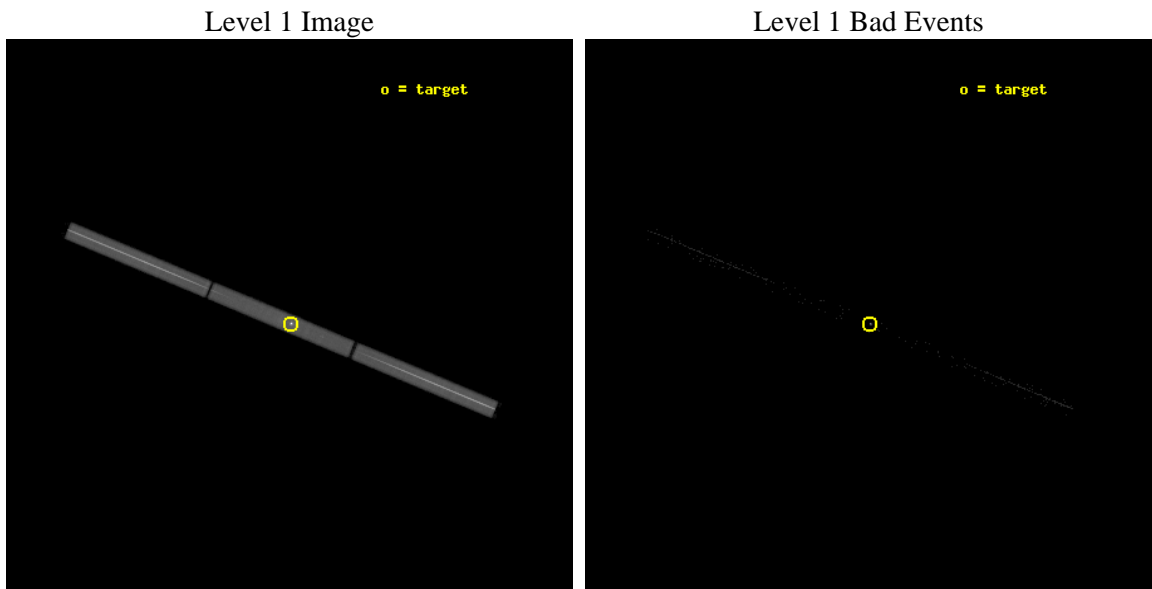
seq_num	291072	Sequence number
obs_id	14422	Observation id
title	LETG+HRC-S high voltage change calibration	Proposal title
observer	Drake Calibration	Principal investigator
object	HZ43	Source name
ra_targ	199.092083	Observer's specified target RA [deg]
dec_targ	29.099	Observer's specified target Dec [deg]
ra_nom	199.09923969663	Nominal RA [deg]
dec_nom	29.101535413153	Nominal Dec [deg]
roll_nom	202.51028010471	Nominal Roll [deg]
revision	3	Processing version of data
ontime	10191.831790328	[s]
livetime	10082.410398249	Ontime multiplied by DTCOR
l2events	1022253	Number of level 2 events



2 OBI

2.1 OBI

2.1.1 Images



2.1.2 Parameters

obi_num	0	Obi number	sched_exp_time	10000.000000	[s] Scheduled observation exposure time
ascdsver	8.4.5	Processing system revision	ontime	10191.831790328	[s]
caldsver	4.5.1.1	 	l1events	1308953	Number of level 1 events
date	2012-08-09T19:04:39	Date and time of file creation			
revision	3	Processing version of data			

2.1.3 Events

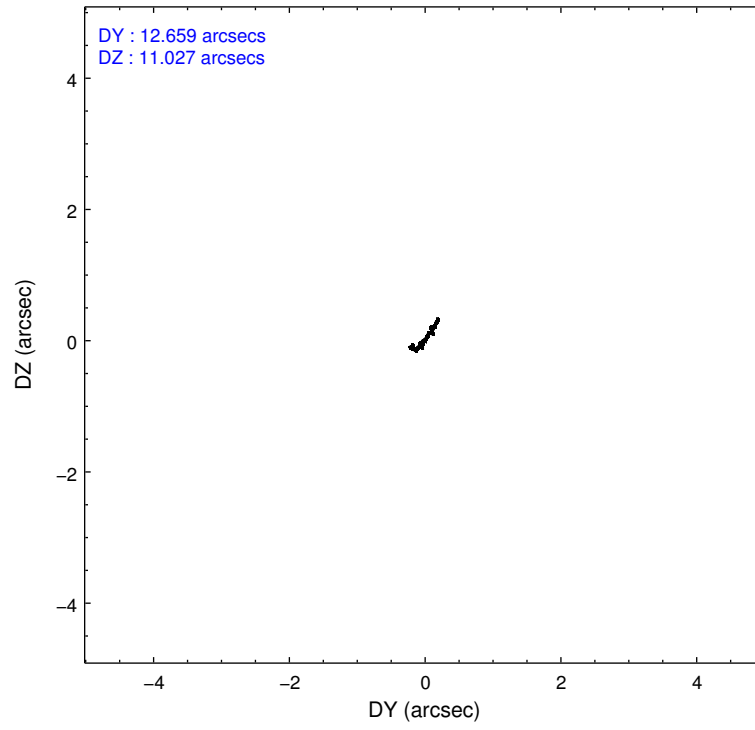
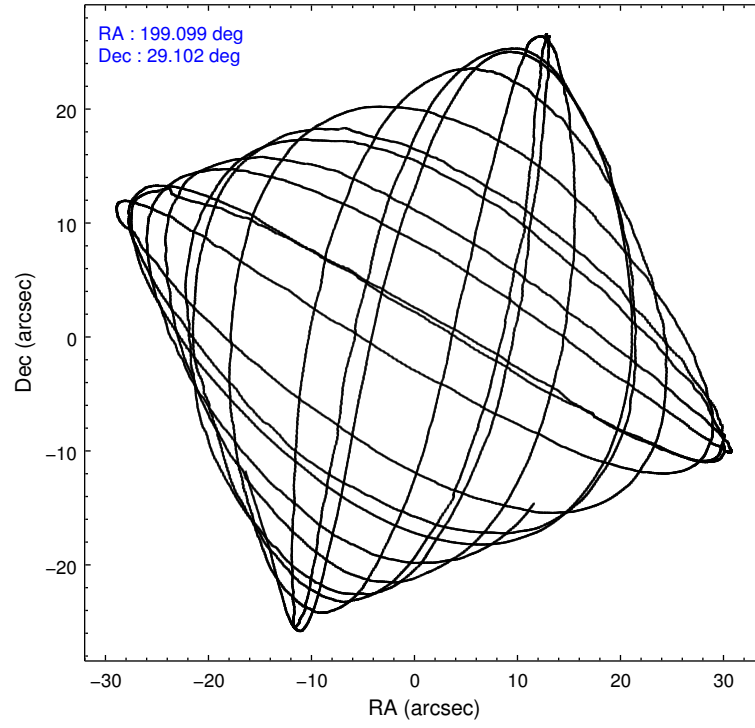
Level 1 Events

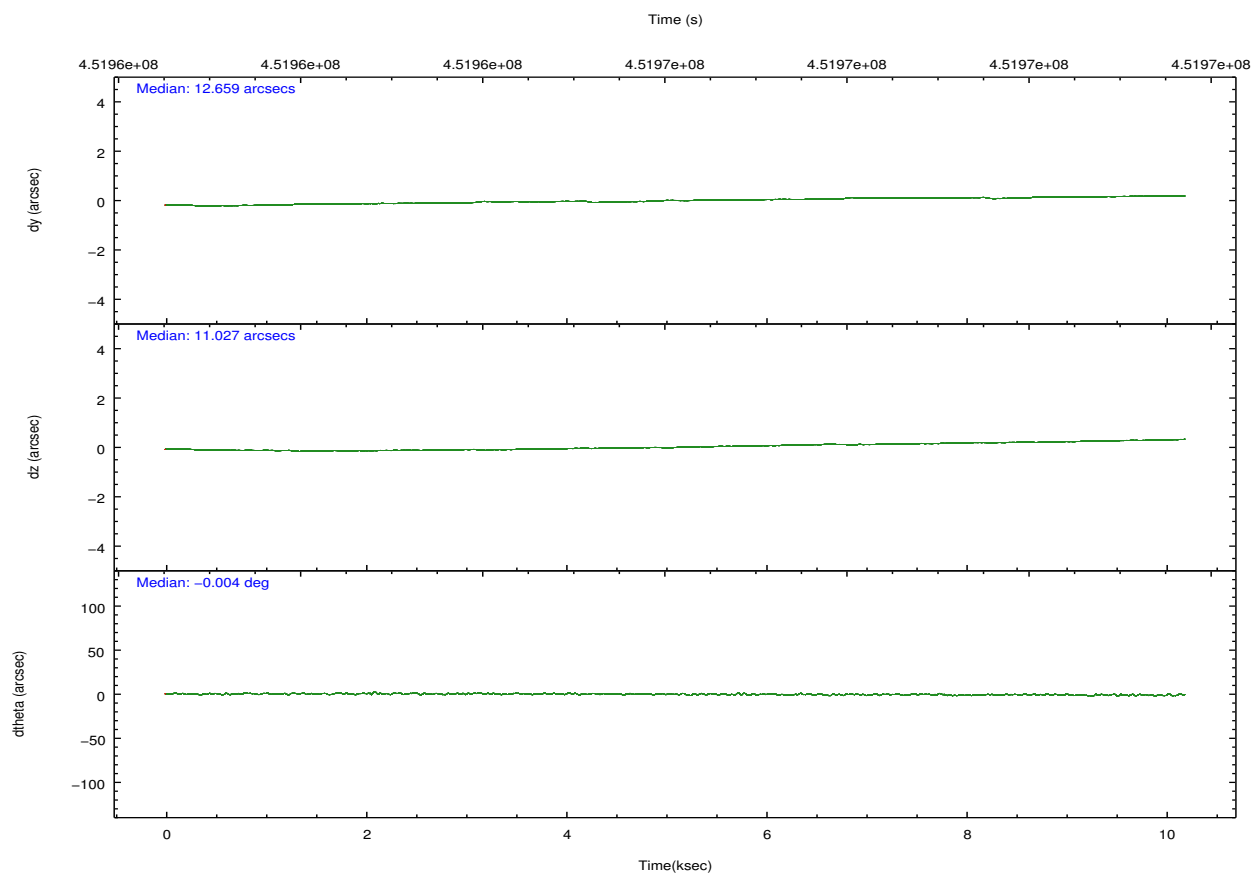
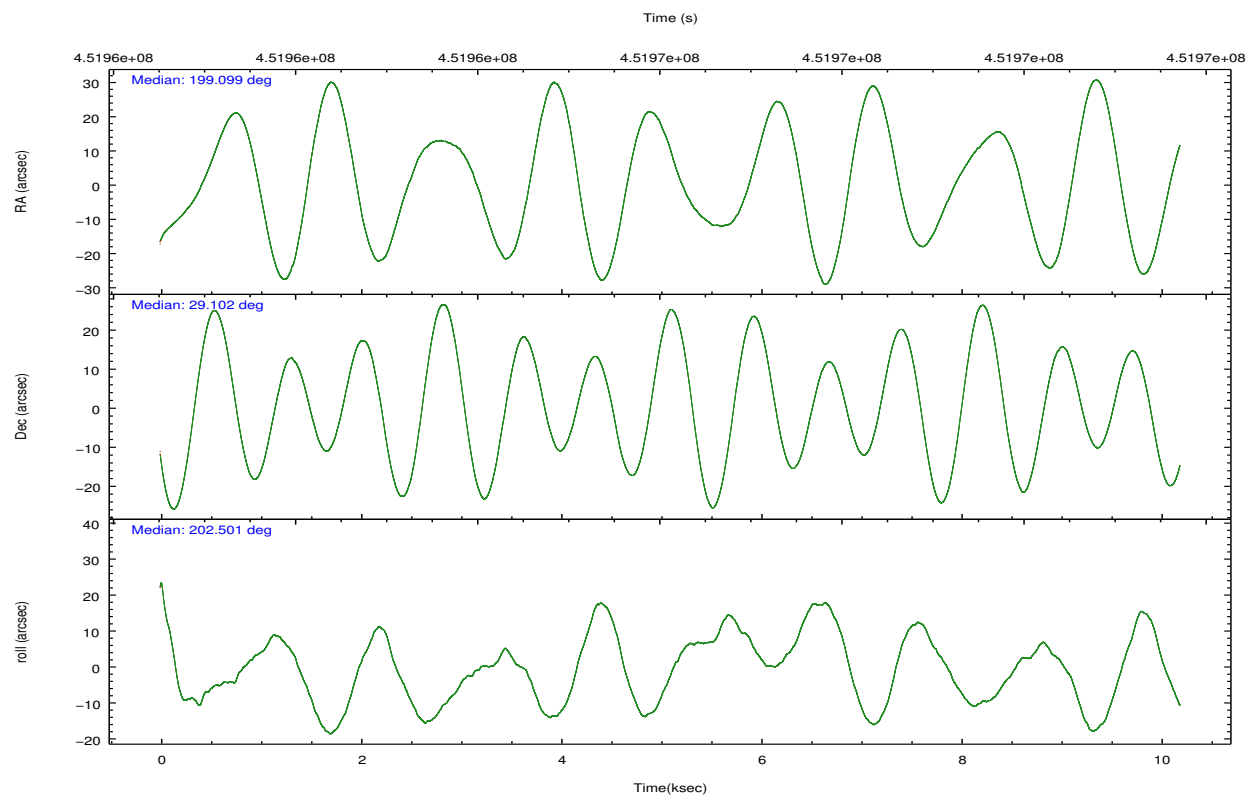
	segment 1	segment 2	segment 3
level 1 events	457566	396622	454765
rejected events	10082	9682	10660
rejected %	2%	2%	2%

2.2 Compared Parameters

Parameter	Planned	Actual	Parameter	Planned	Actual
Instrument	HRC	HRC	Obspar format version number	7	7
Detector	HRC-S	HRC-S	Obspar file type	PREDICTED	ACTUAL
Grating	LETG	LETG	Obspar update status	NONE	UPDATED
Data mode	OBSERVING	OBSERVING			
Observation mode	POINTING	POINTING			
[deg] Pointing RA	199.118034	199.0992396966283			
[deg] Pointing Dec	29.125313	29.10153541315258			
[deg] Pointing Roll	202.433781	202.5102801047116			
[mm] SIM focus pos	-1.429586	-1.428180813131781			
[mm] SIM defocus	0.1037507710433287	0.1051558262725154			
[mm] SIM translation stage pos	250.455976	250.4635187648994			
[mm] SIM translation stage offset	0	-0.007540371344731511			
[s] Observation start time (MET)	451961201.184000	451960367.21089			
Observation start date	2012-04-28T00:45:35	2012-04-28T00:32:47			
[s] Observation end time (MET)	451971201.184000	451971917.424			
Observation end date	2012-04-28T03:32:15	2012-04-28T03:45:17			

2.3 Aspect



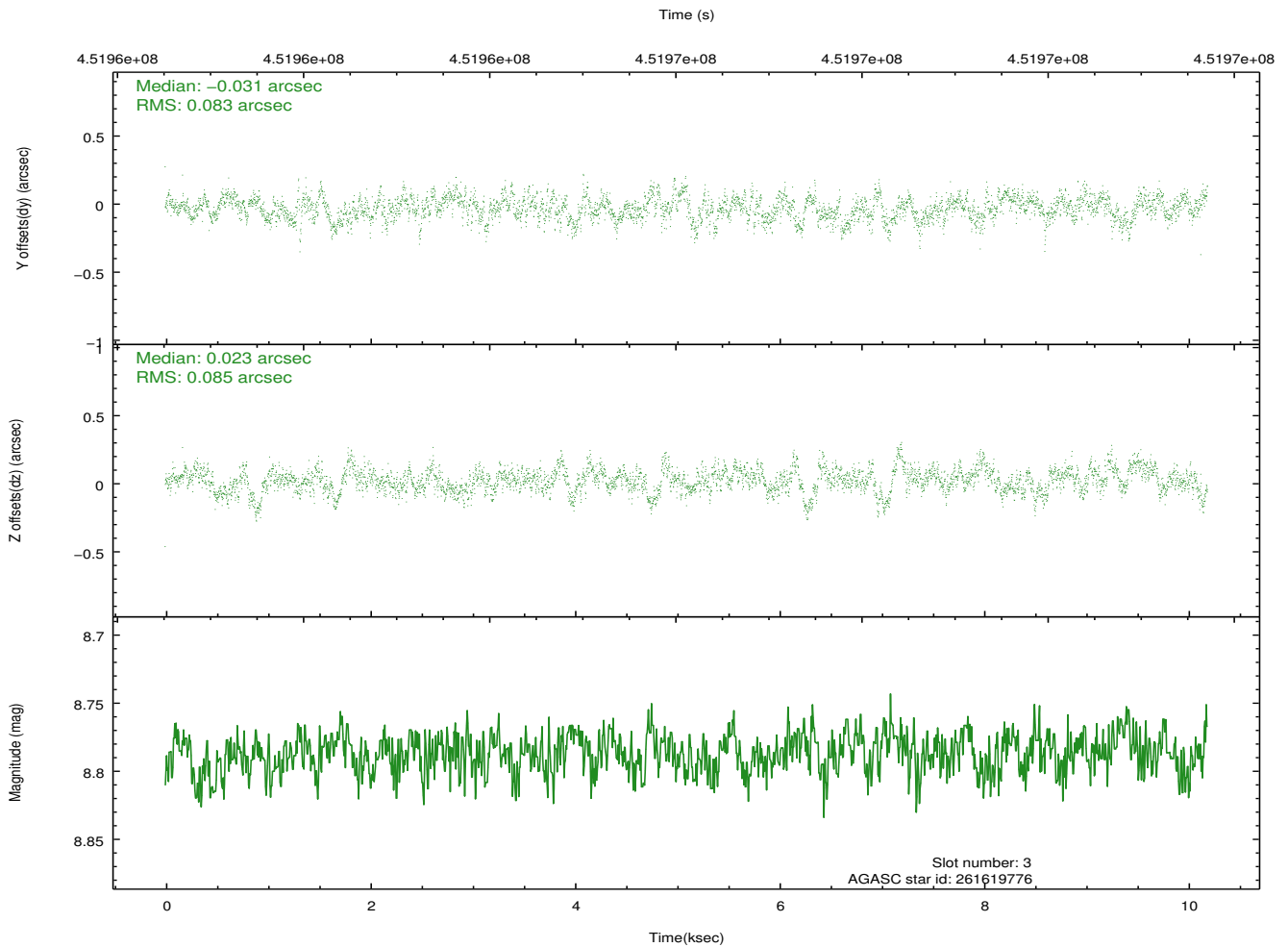
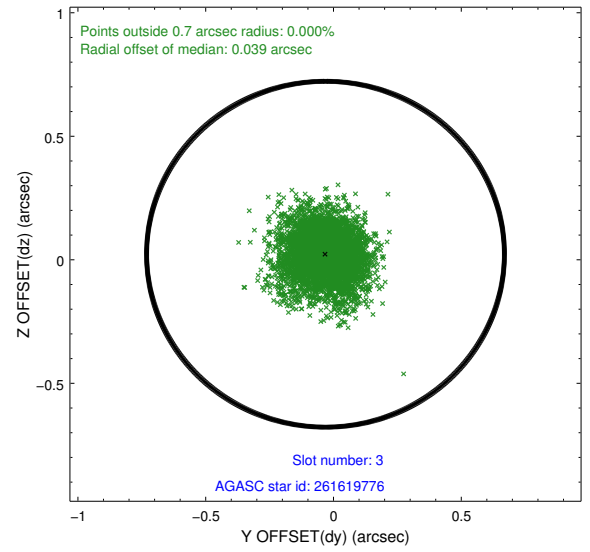
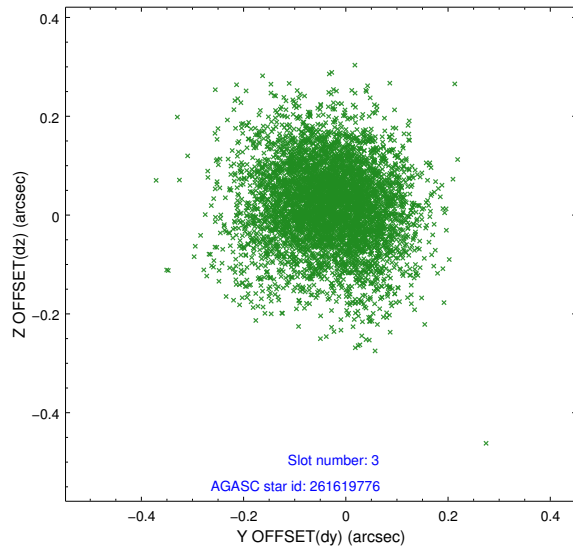


Slot Statistics

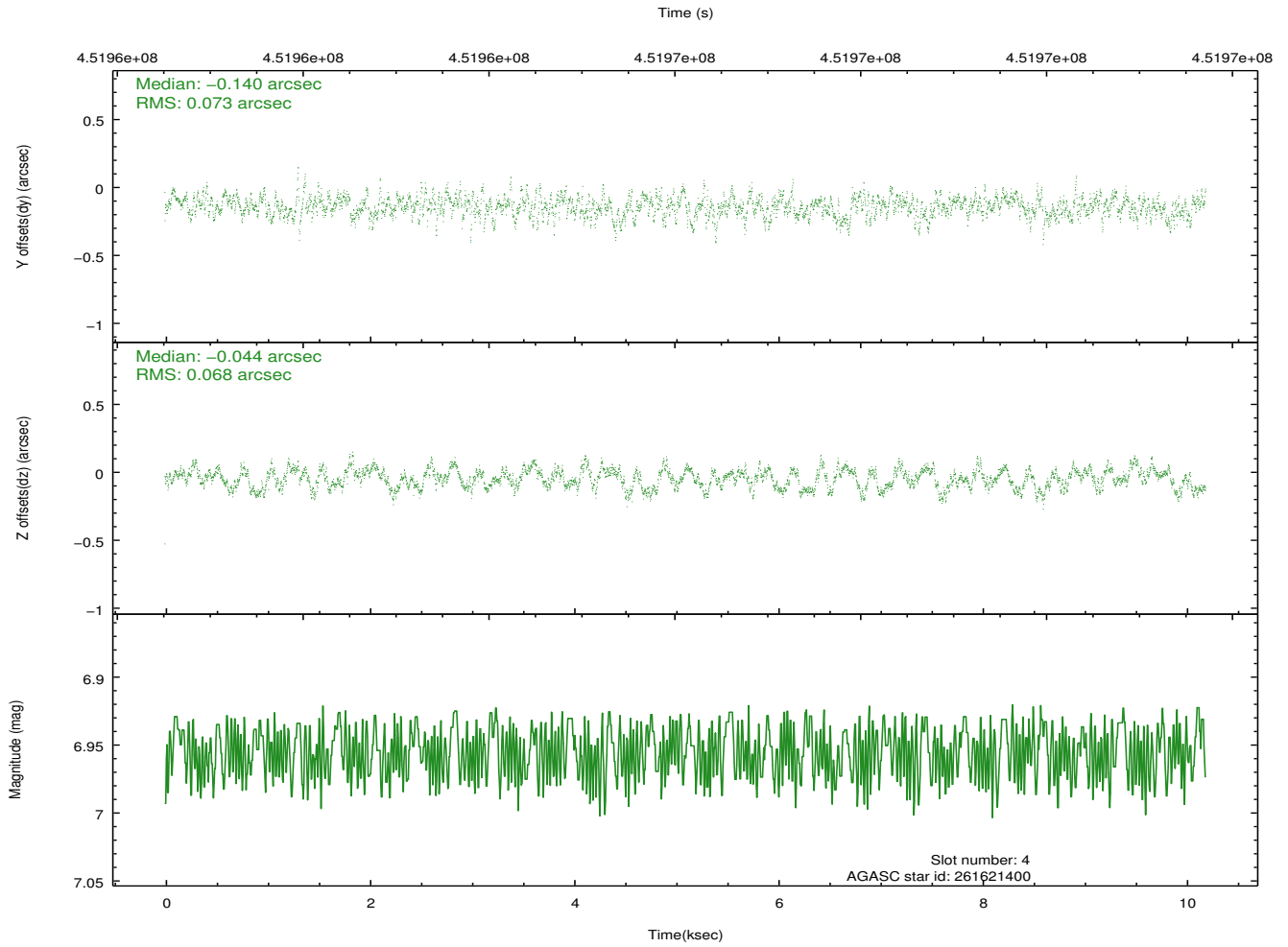
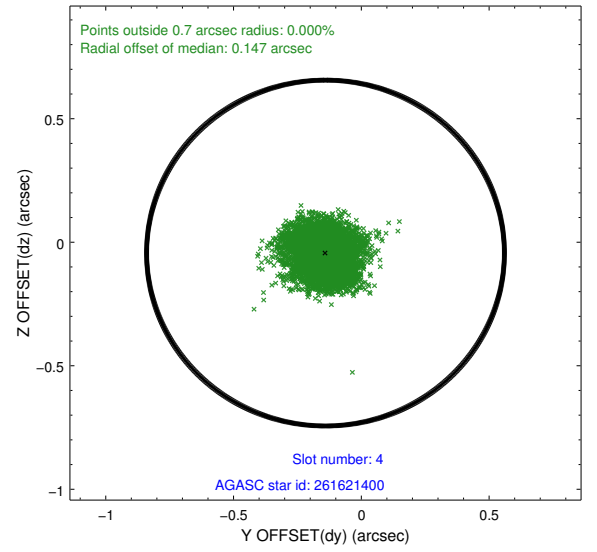
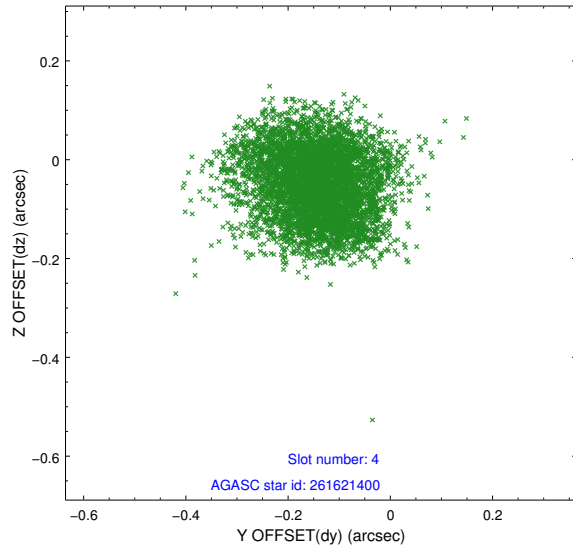
slot	status	id	mag	n_pts	med_dy	med_dz	dr1	dr2	ra	dec	mean_y	mean_z
0	FID	HRC-S-1	6.95	2487	0.058	-0.146	0.010	0.015	0.000000	0.000000	-1167.02	-459.75
1	FID	HRC-S-2	6.94	2487	0.260	-0.126	0.011	0.018	0.000000	0.000000	1232.39	-452.52
2	FID	HRC-S-3	6.96	2486	0.070	-0.030	0.012	0.019	0.000000	0.000000	-1169.25	569.72
3	GUIDE	261619776	8.79	4967	-0.031	0.023	0.125	0.211	198.654383	29.401174	963.67	-1474.83
4	GUIDE	261621400	6.95	4972	-0.140	-0.044	0.108	0.167	198.901600	28.741982	1157.91	1013.73
5	GUIDE	261626376	9.69	4957	-0.032	0.146	0.186	0.293	198.947288	29.347445	190.43	-944.00
6	GUIDE	261629720	8.10	4972	0.182	-0.031	0.111	0.174	199.236176	29.044452	-232.71	410.35
7	GUIDE	261624808	10.62	4916	0.020	-0.095	0.333	0.510	199.694735	28.625338	-999.86	2354.78

2.4 Star Slots

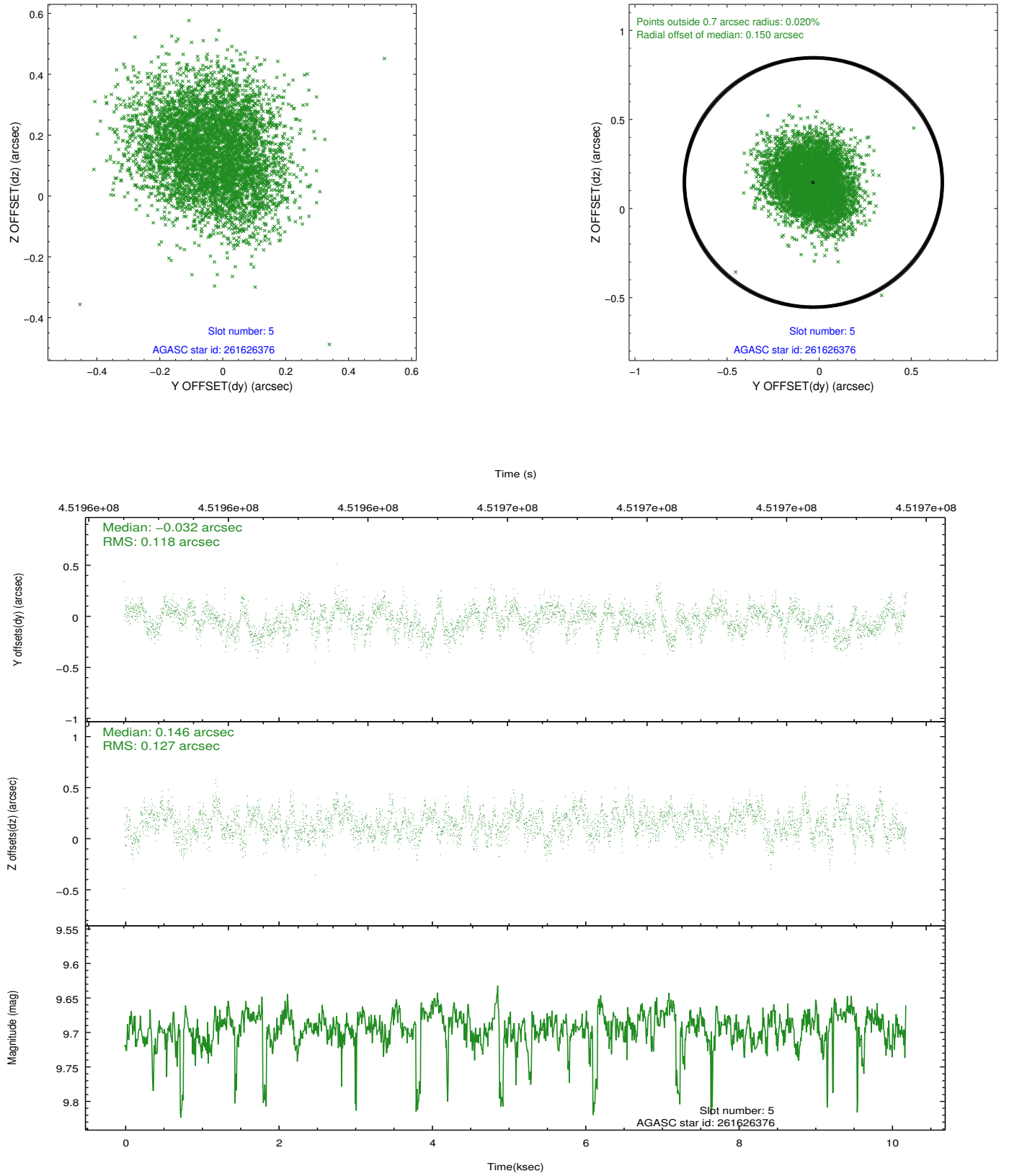
2.4.1 Slot 3



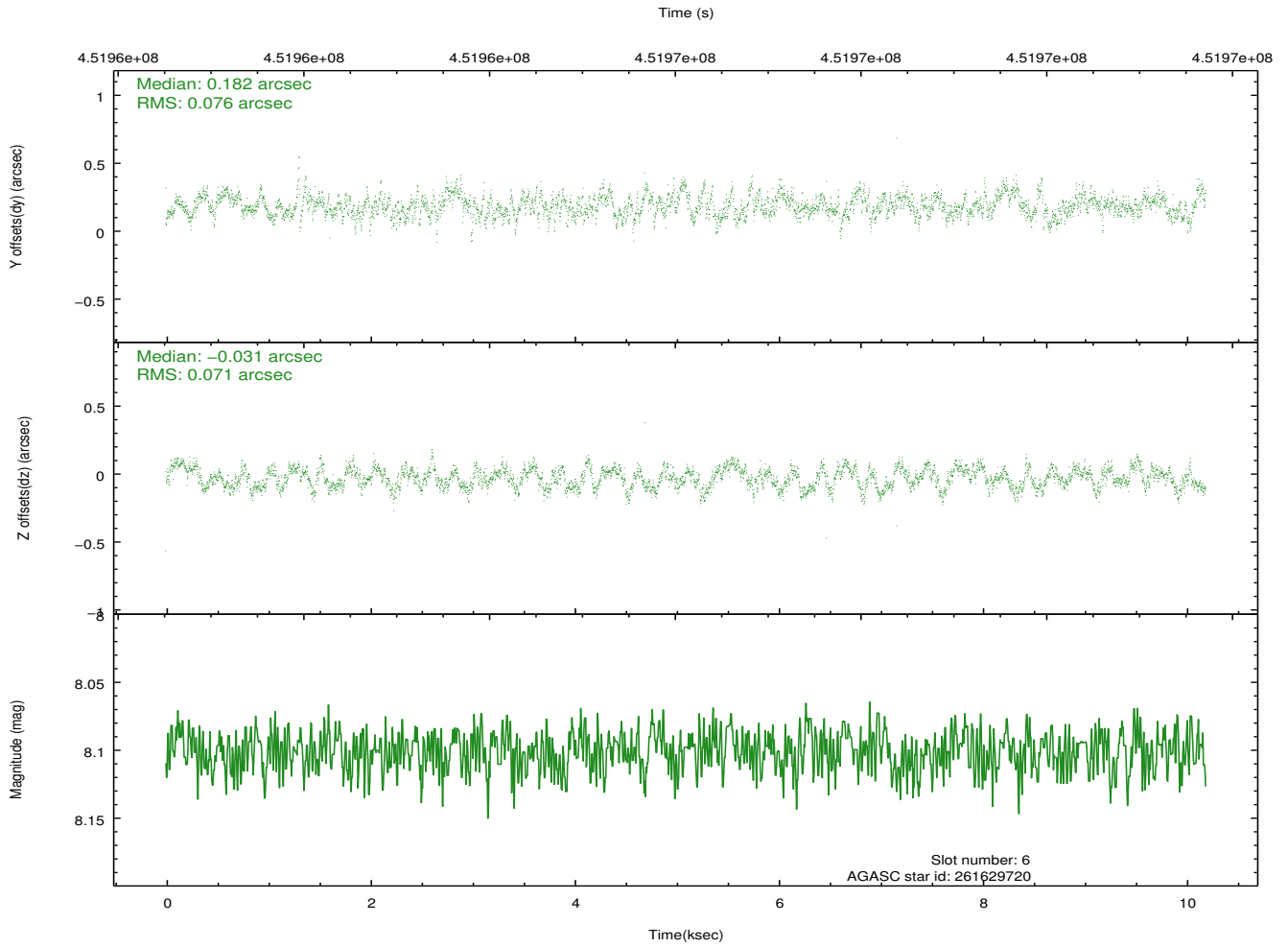
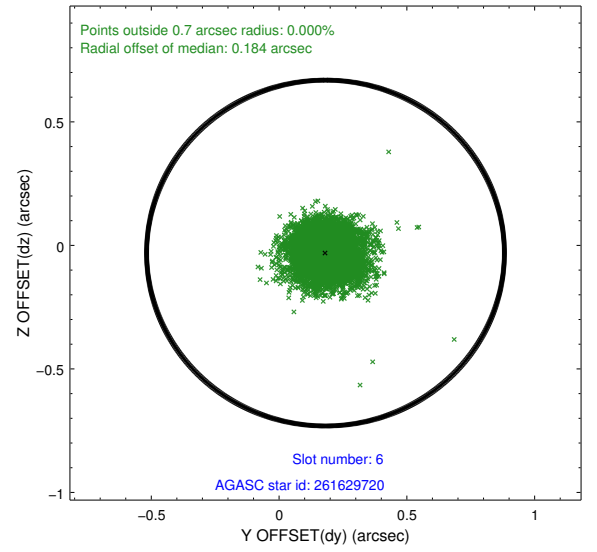
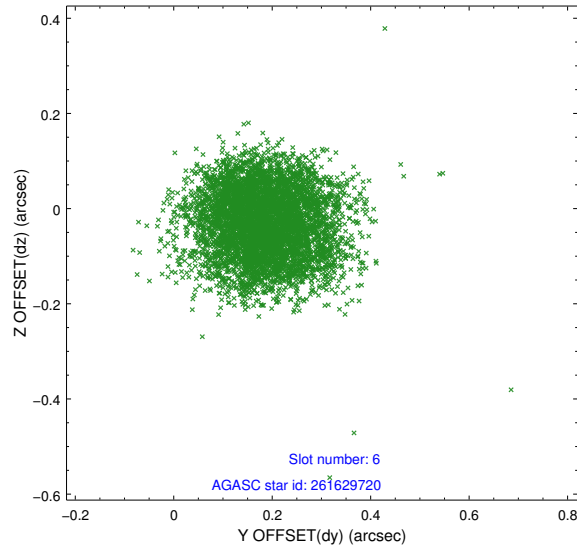
2.4.2 Slot 4



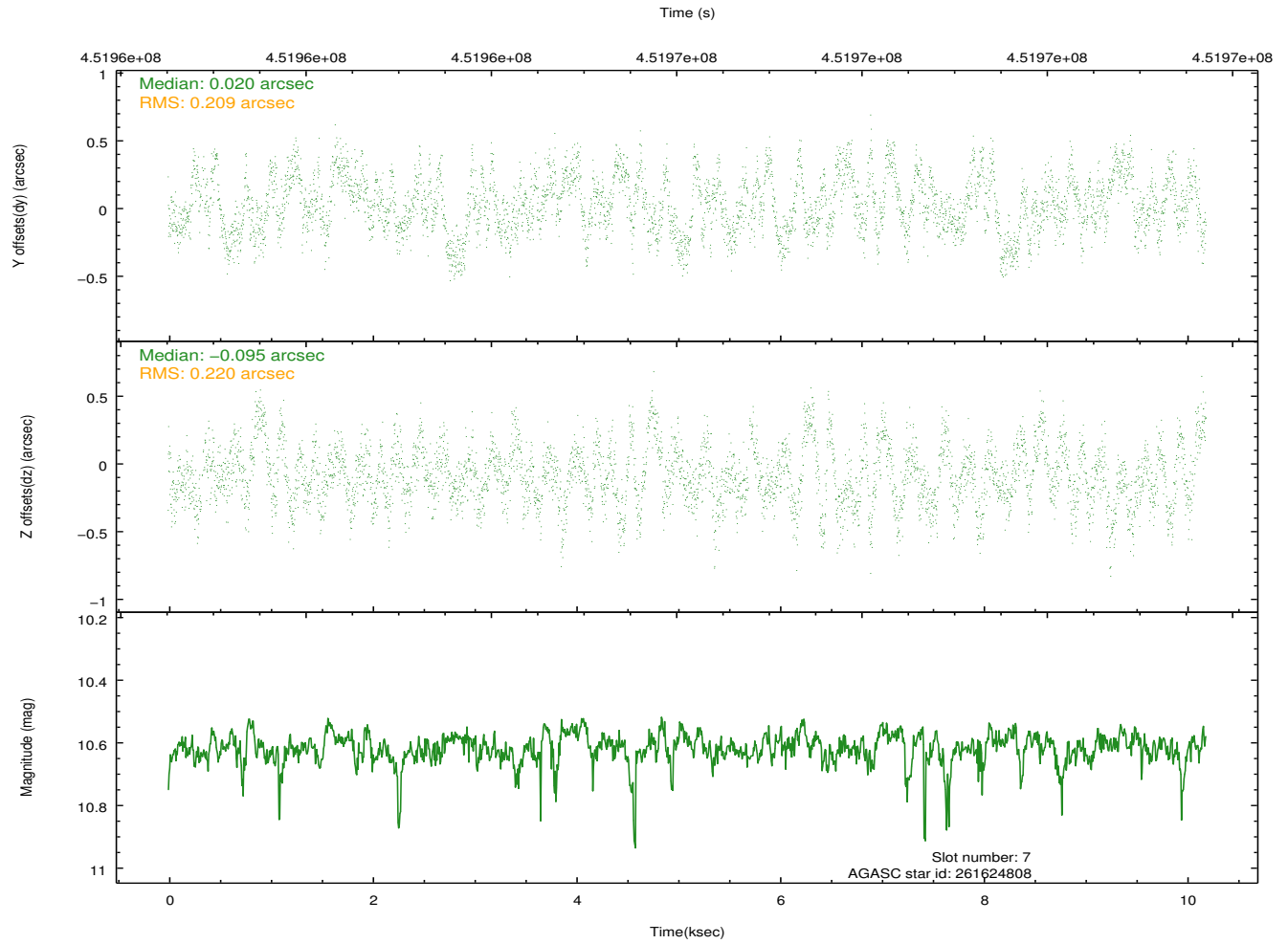
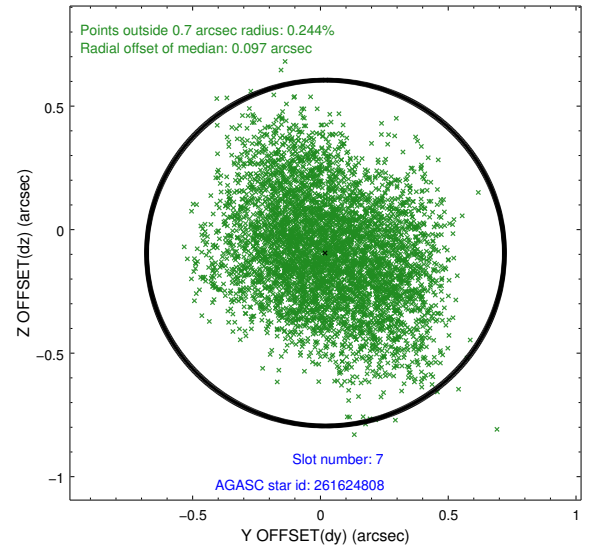
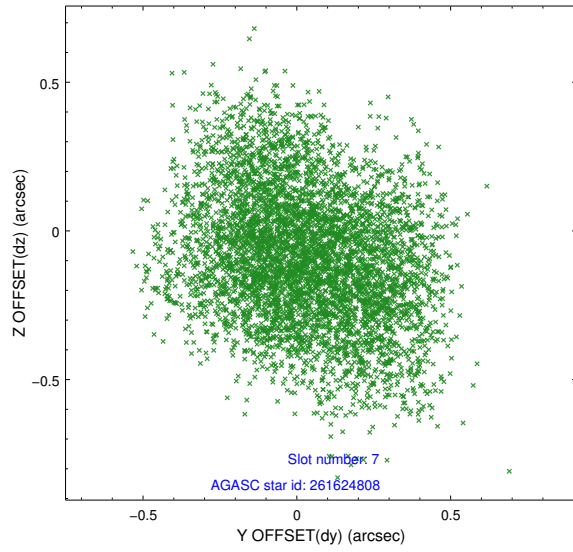
2.4.3 Slot 5



2.4.4 Slot 6

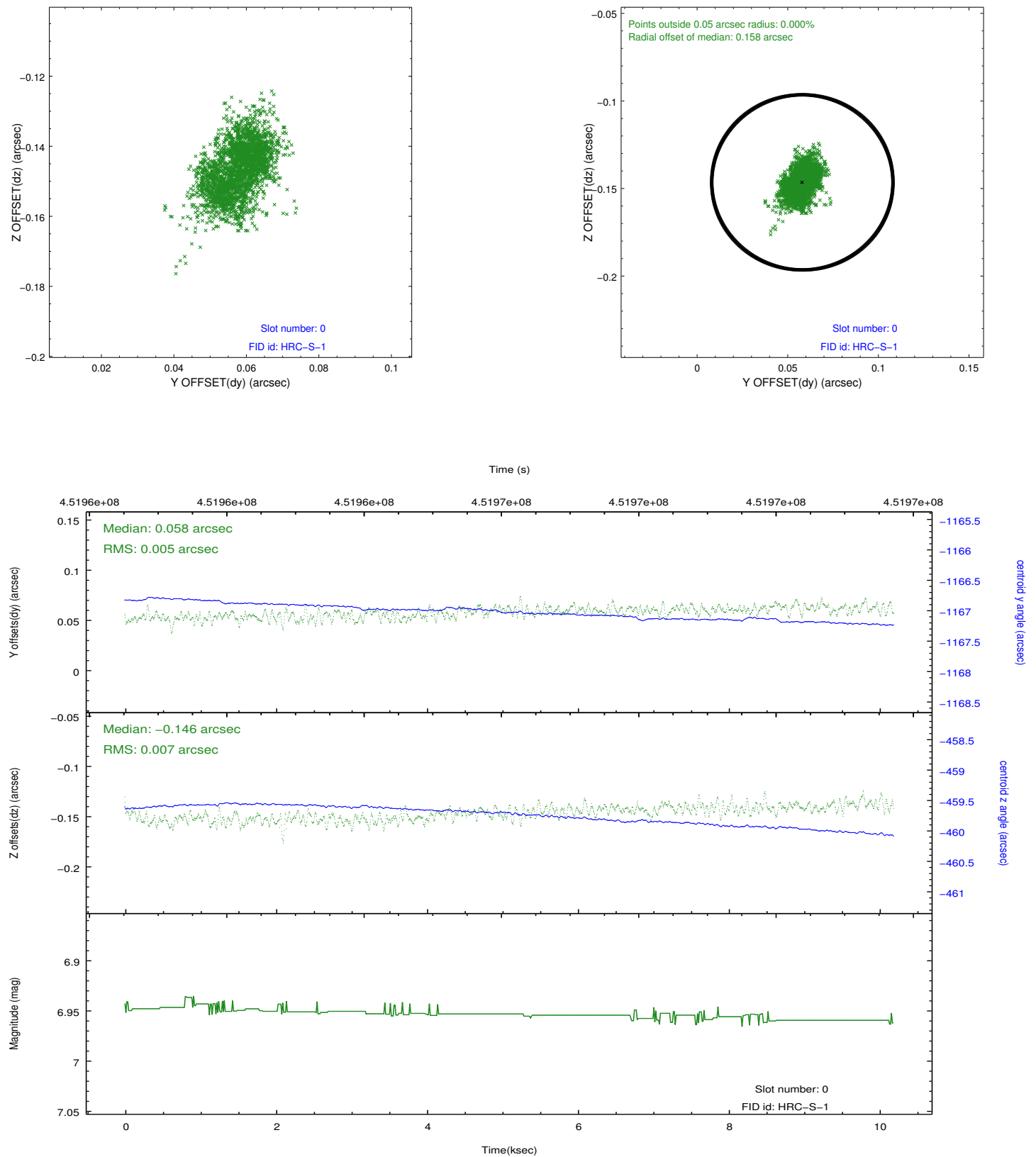


2.4.5 Slot 7

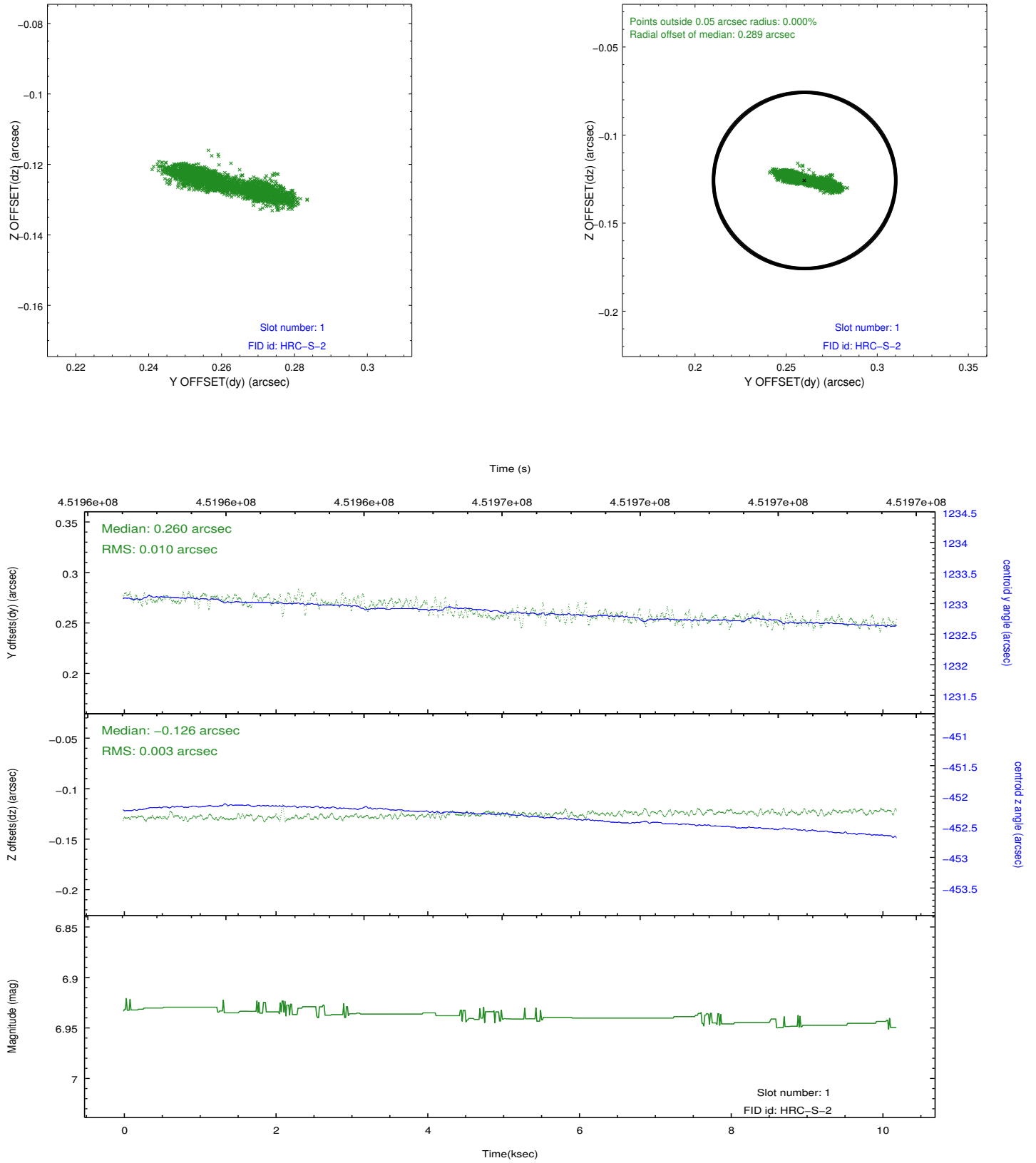


2.5 FID Slots

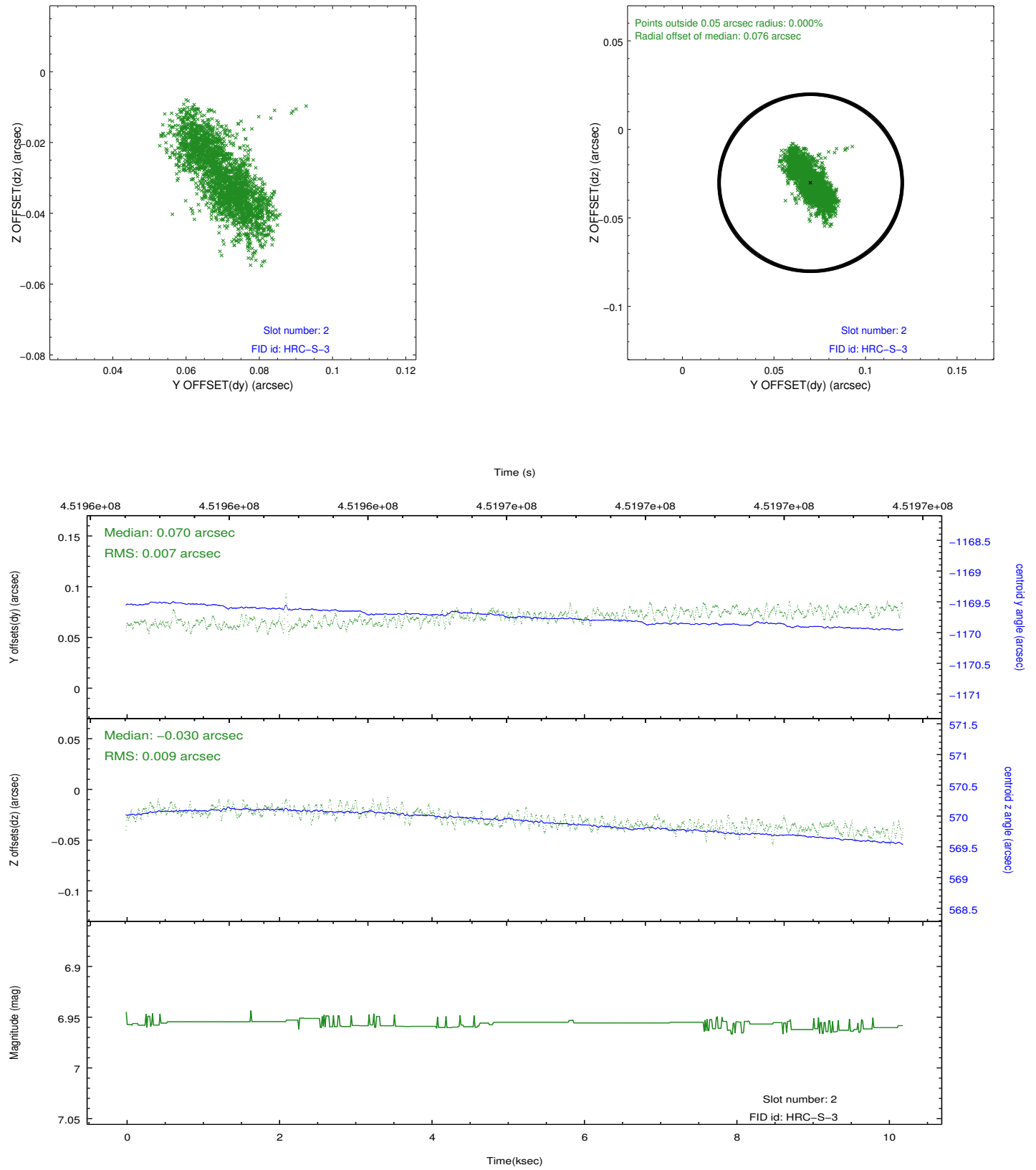
2.5.1 Slot 0



2.5.2 Slot 1

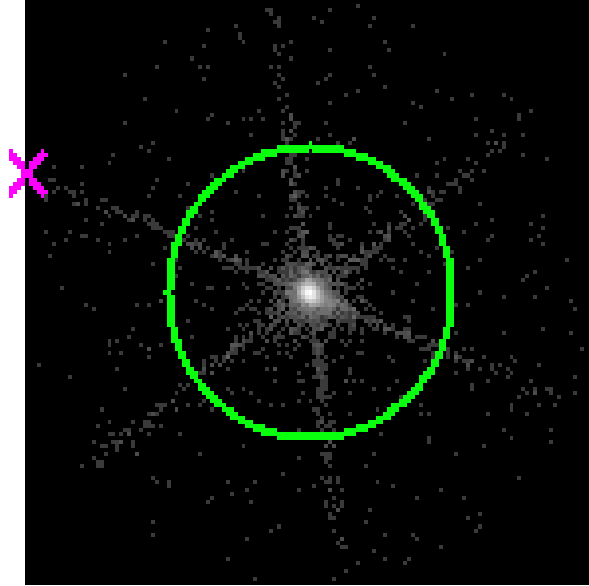


2.5.3 Slot 2

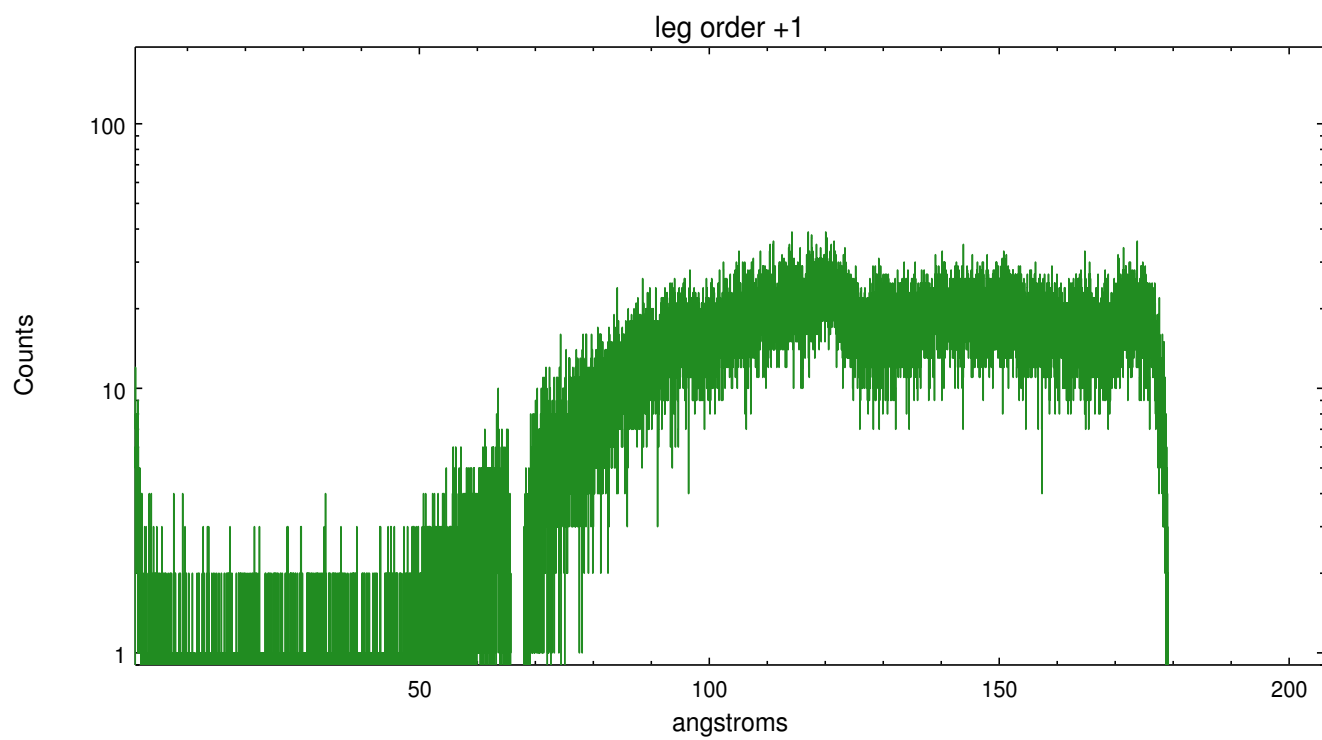
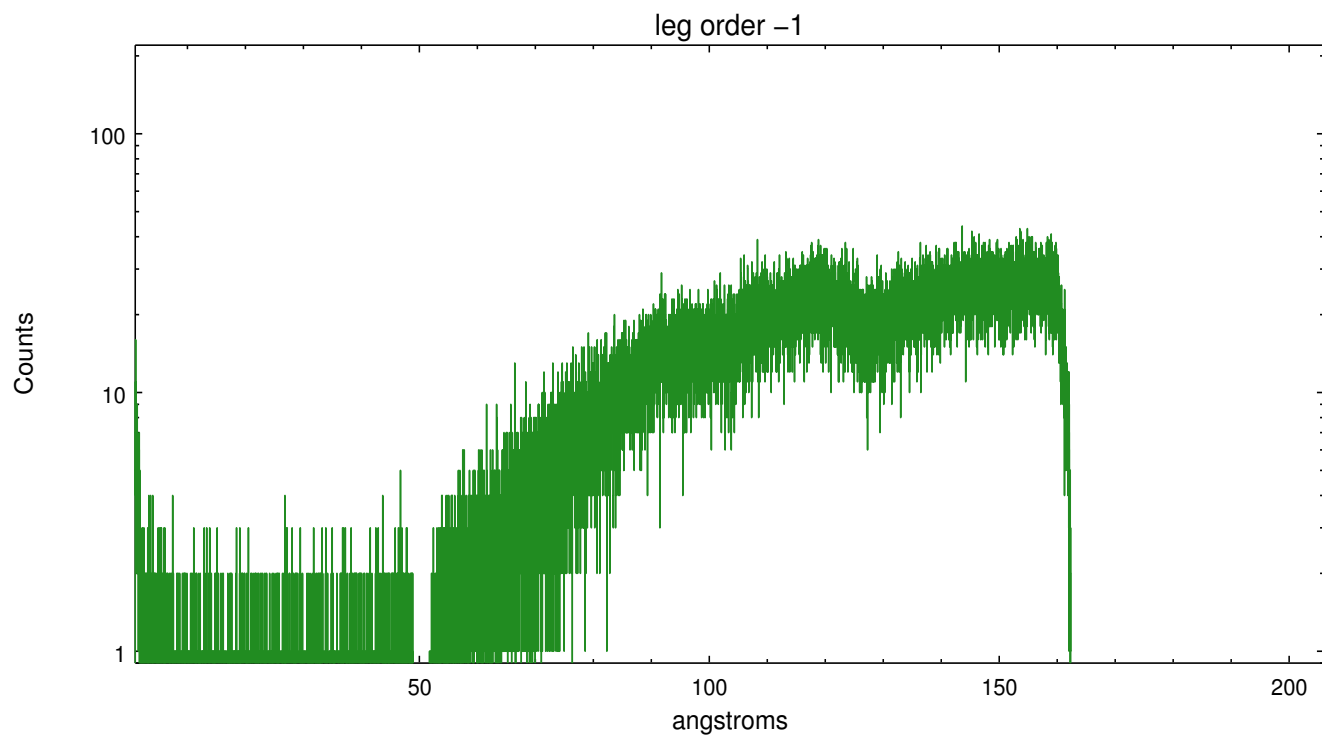


3 Gratings

3.1 LETG Arm



LETG Zero Order



A Summary

A.1 Status

V&V Scientist	Joy Nichols
V&V Date (YYYY-MM-DD)	2012.08.10
V&V Edition	1
V&V Disposition and Status	OK
V&V Charge Time	10.191831790328

A.2 Comments