

V&V Reference Report

L2 ASCDS Version : 8.4.3

Observation 14273 - L2 Version 1
Chandra X-Ray Center

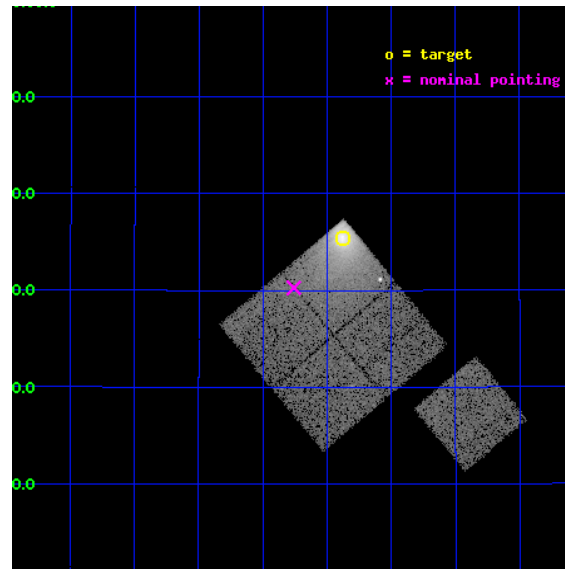
L2 Processing Date : Mar 26 2012

Contents

1	Front	2
2	OBI	3
2.1	OBI	3
2.1.1	Images	3
2.1.2	Bias	3
2.1.3	Parameters	4
2.1.4	Events	4
2.2	Compared Parameters	5
2.3	Aspect	6
2.4	Star Slots	9
2.4.1	Slot 3	9
2.4.2	Slot 4	10
2.4.3	Slot 5	11
2.4.4	Slot 6	12
2.4.5	Slot 7	13
2.5	FID Slots	14
2.5.1	Slot 0	14
2.5.2	Slot 1	15
2.5.3	Slot 2	16
A	Summary	17
A.1	Status	17
A.2	Comments	17

1 Front

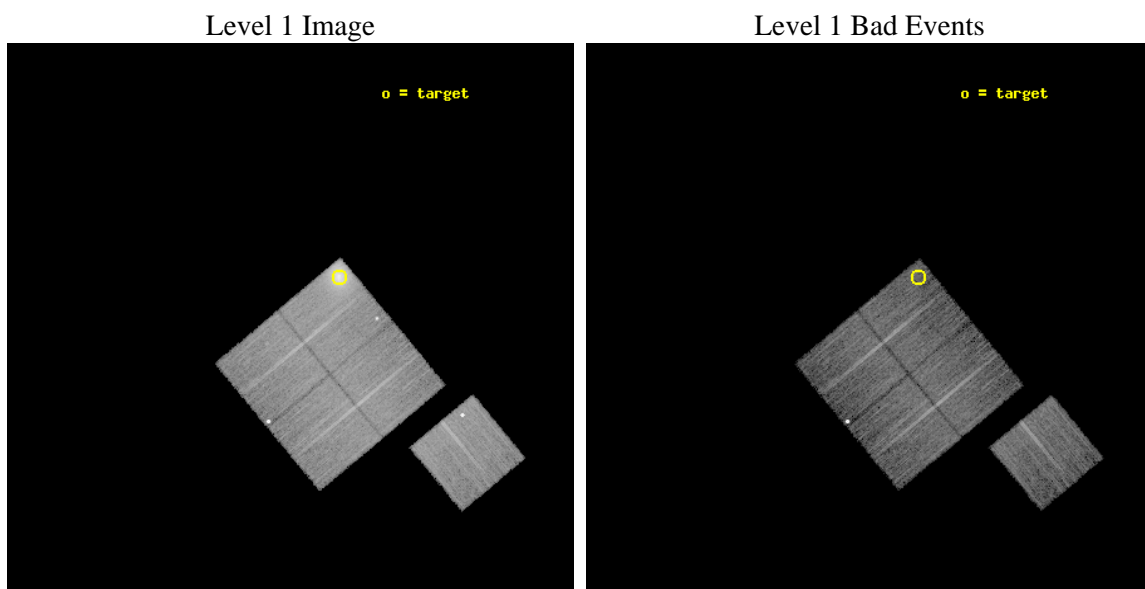
seq_num	890068	Sequence number
obs_id	14273	Observation id
title	AO-13 Calibration Observations of A1795	Proposal title
observer	Dr. CXC Calibration	Principal investigator
object	A1795	Source name
dtcycle	0	
cycle	P	events from which exps? Prim/Second/Both
ra_targ	207.219583	Observer's specified target RA [deg]
dec_targ	26.590833	Observer's specified target Dec [deg]
ra_nom	207.31457067105	Nominal RA [deg]
dec_nom	26.504438244141	Nominal Dec [deg]
roll_nom	140.21498824456	Nominal Roll [deg]
revision	1	Processing version of data
ontime	14777.700113654	Sum of GTIs [s]
livetime	14584.618582485	Livetime [s]
ontime0	14777.700113654	Sum of GTIs [s]
ontime1	14777.700113654	Sum of GTIs [s]
ontime2	14777.700113654	Sum of GTIs [s]
ontime3	14777.700113654	Sum of GTIs [s]
ontime6	14777.700113654	Sum of GTIs [s]
l2events	101510	Number of level 2 events



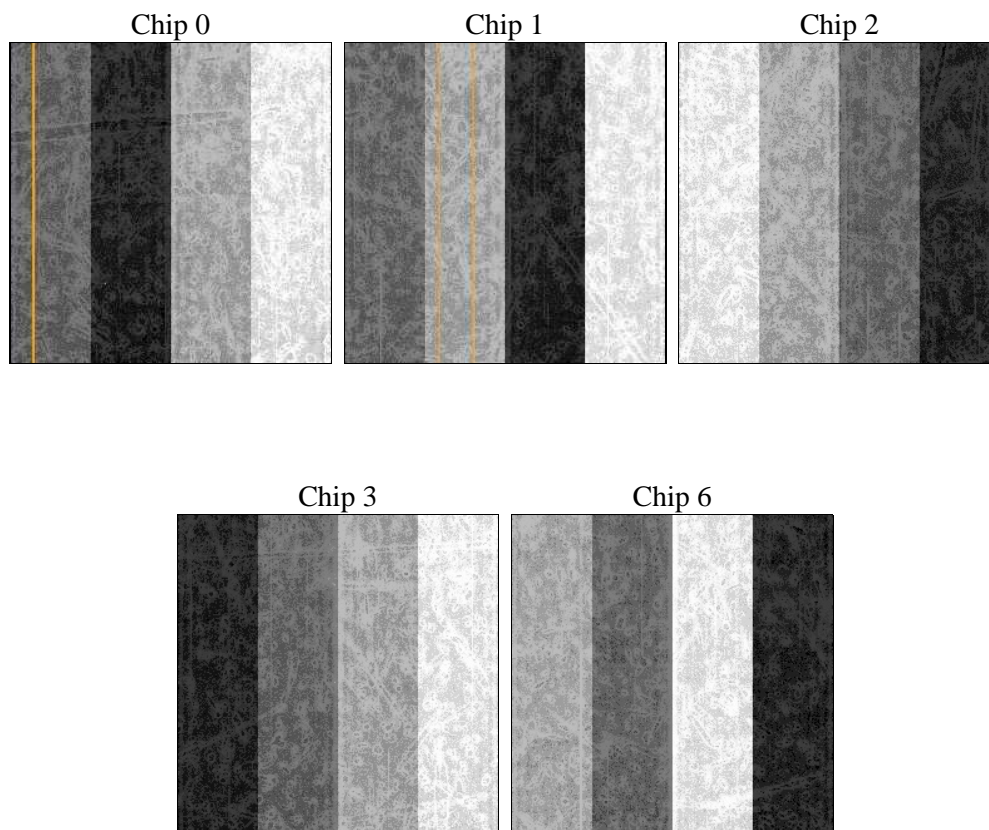
2 OBI

2.1 OBI

2.1.1 Images



2.1.2 Bias



2.1.3 Parameters

obi_num	1	Obi number	sched_exp_time	15000.000000	[s] Scheduled observation exposure time
ascdsver	8.4.3	Processing system revision	ontime	14777.700113654	Sum of GTIs [s]
caldbver	4.4.8	 	ontime0	14777.700113654	Sum of GTIs [s]
date	2012-03-26T18:08:38	Date and time of file creation	ontime1	14777.700113654	Sum of GTIs [s]
revision	1	Processing version of data	ontime2	14777.700113654	Sum of GTIs [s]
			ontime3	14777.700113654	Sum of GTIs [s]
			ontime6	14777.700113654	Sum of GTIs [s]
			l1events	491636	Number of level 1 events

2.1.4 Events

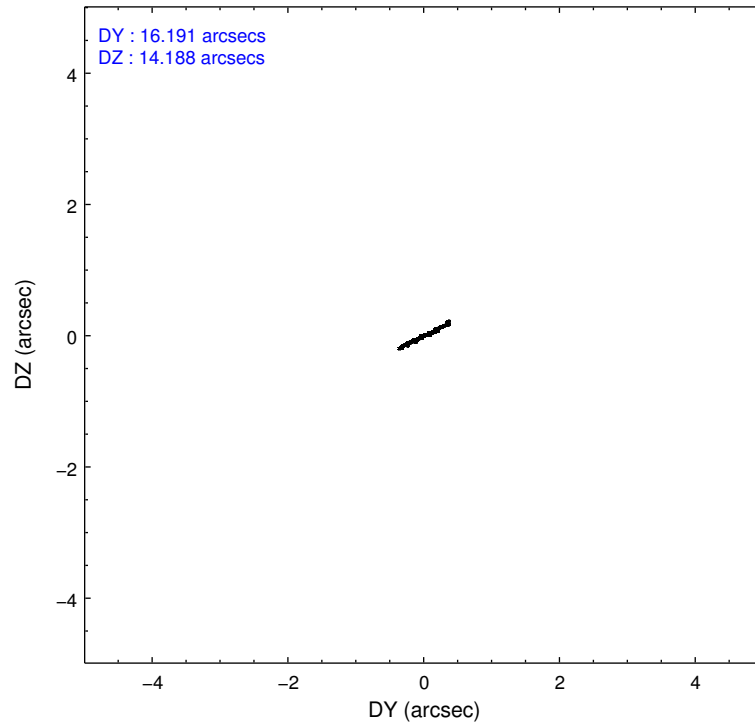
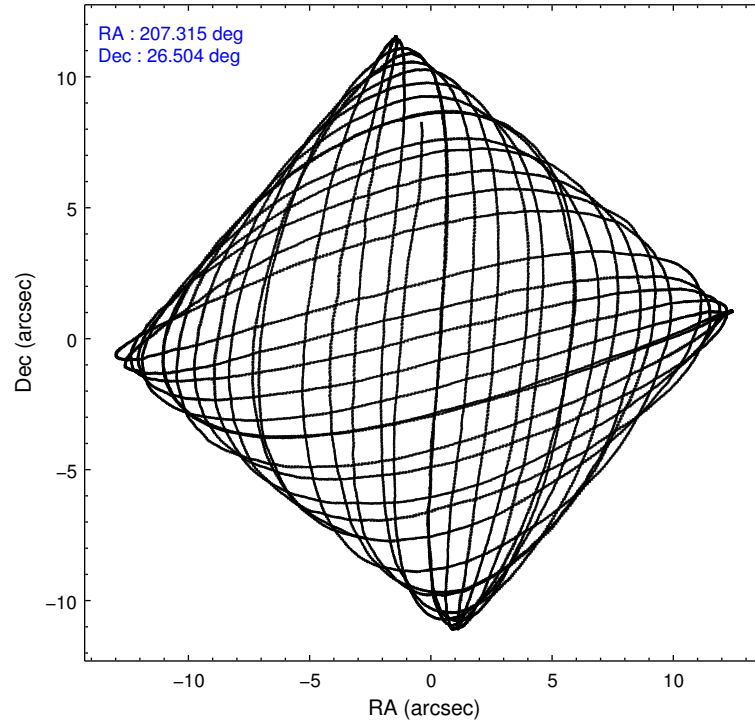
	ccd 0	ccd 1	ccd 2	ccd 3	ccd 6
level 1 events	142419	85692	86630	85397	91498
rejected events	71242	73672	75962	75734	77074
rejected %	50%	85%	87%	88%	84%

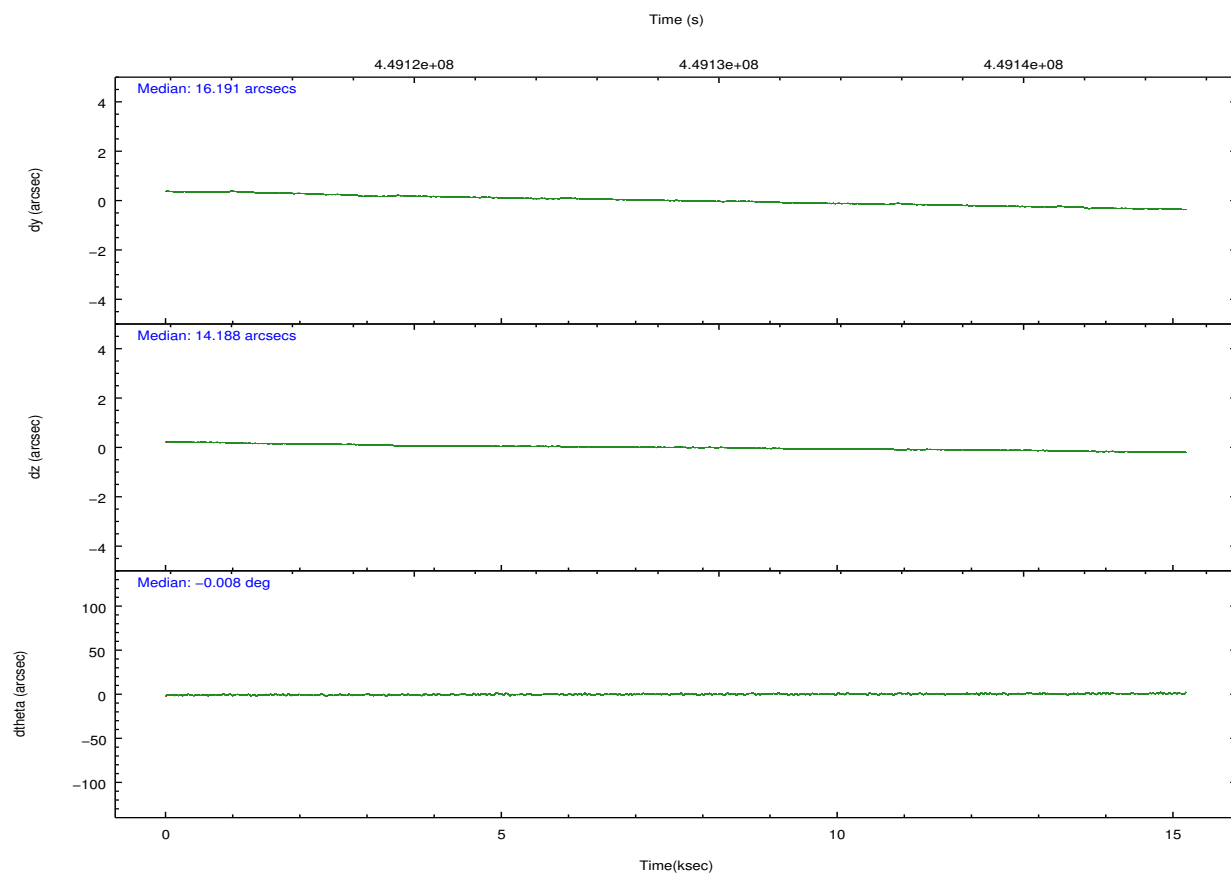
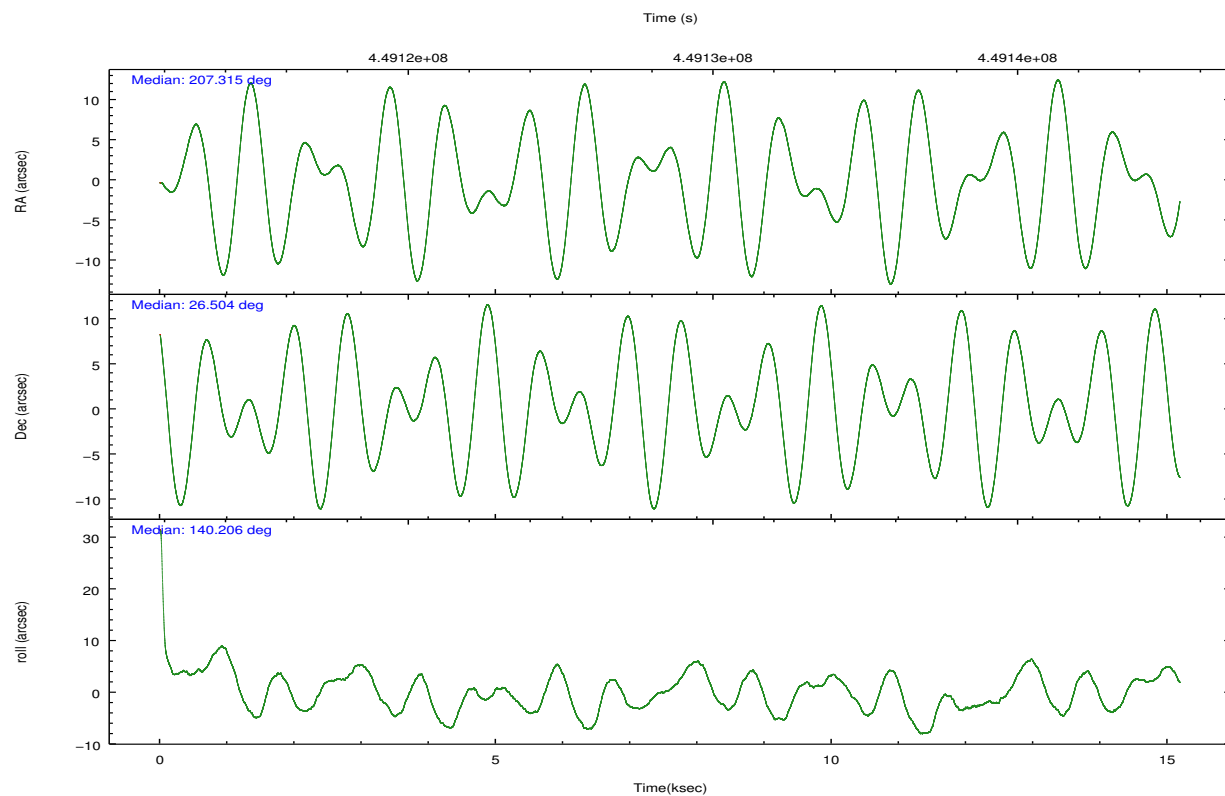
	ccd 0	ccd 1	ccd 2	ccd 3	ccd 6
grade 0 events	52116	4776	4353	3486	7793
	36%	5%	5%	4%	8%
grade 1 events	224	4622	56	59	50
	0%	5%	0%	0%	0%
grade 2 events	8898	2588	2401	2079	2209
	6%	3%	2%	2%	2%
grade 3 events	3182	1183	1012	1029	1025
	2%	1%	1%	1%	1%
grade 4 events	3121	1150	1023	1032	1022
	2%	1%	1%	1%	1%
grade 5 events	3995	4138	3599	4474	4099
	2%	4%	4%	5%	4%
grade 6 events	3873	2323	1883	2039	2379
	2%	2%	2%	2%	2%
grade 7 events	67010	64912	72303	71199	72921
	47%	75%	83%	83%	79%

2.2 Compared Parameters

Parameter	Planned	Actual	Parameter	Planned	Actual
Instrument	ACIS	ACIS	Obspar format version number	7	7
Detector	ACIS-01236	ACIS-01236	Obspar file type	PREDICTED	ACTUAL
Grating	NONE	NONE	Obspar update status	NONE	UPDATED
Data mode	VFAINT	VFAINT	Number of optional ACIS chips dropped	0	0
Observation mode	POINTING	POINTING	On-chip summing requested	N	N
[deg] Pointing RA	207.344894	207.3145706710466	Subarray requested	NONE	NONE
[deg] Pointing Dec	26.499884	26.50443824414079	Alternating exposures requested	N	N
[deg] Pointing Roll	139.992749	140.2149882445559	[s] Primary exposure time	0.000000	3.1
[mm] SIM focus pos	-0.782348	-0.7809083437167272			
[mm] SIM defocus	0	0.001439871863259334			
[mm] SIM translation stage pos	-254.359963	-254.3657361129205			
[mm] SIM translation stage offset	20.7675	20.77328310999084			
[s] Observation start time (MET)	449121891.184000	449121515.2728			
Observation start date	2012-03-26T04:03:45	2012-03-26T03:58:35			
[s] Observation end time (MET)	449136891.184000	449137048.12363			
Observation end date	2012-03-26T08:13:45	2012-03-26T08:17:28			
Read mode	TIMED	TIMED			

2.3 Aspect



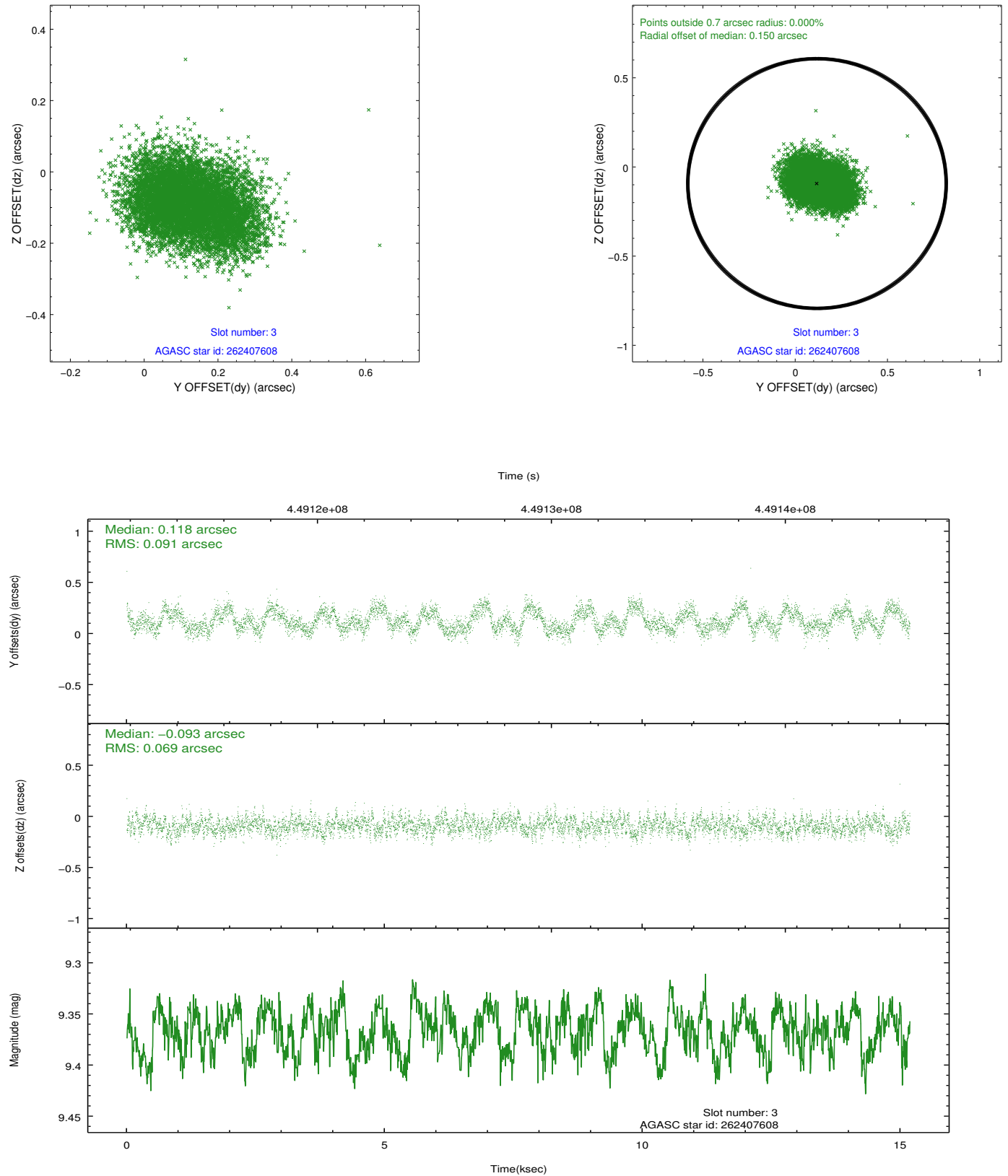


Slot Statistics

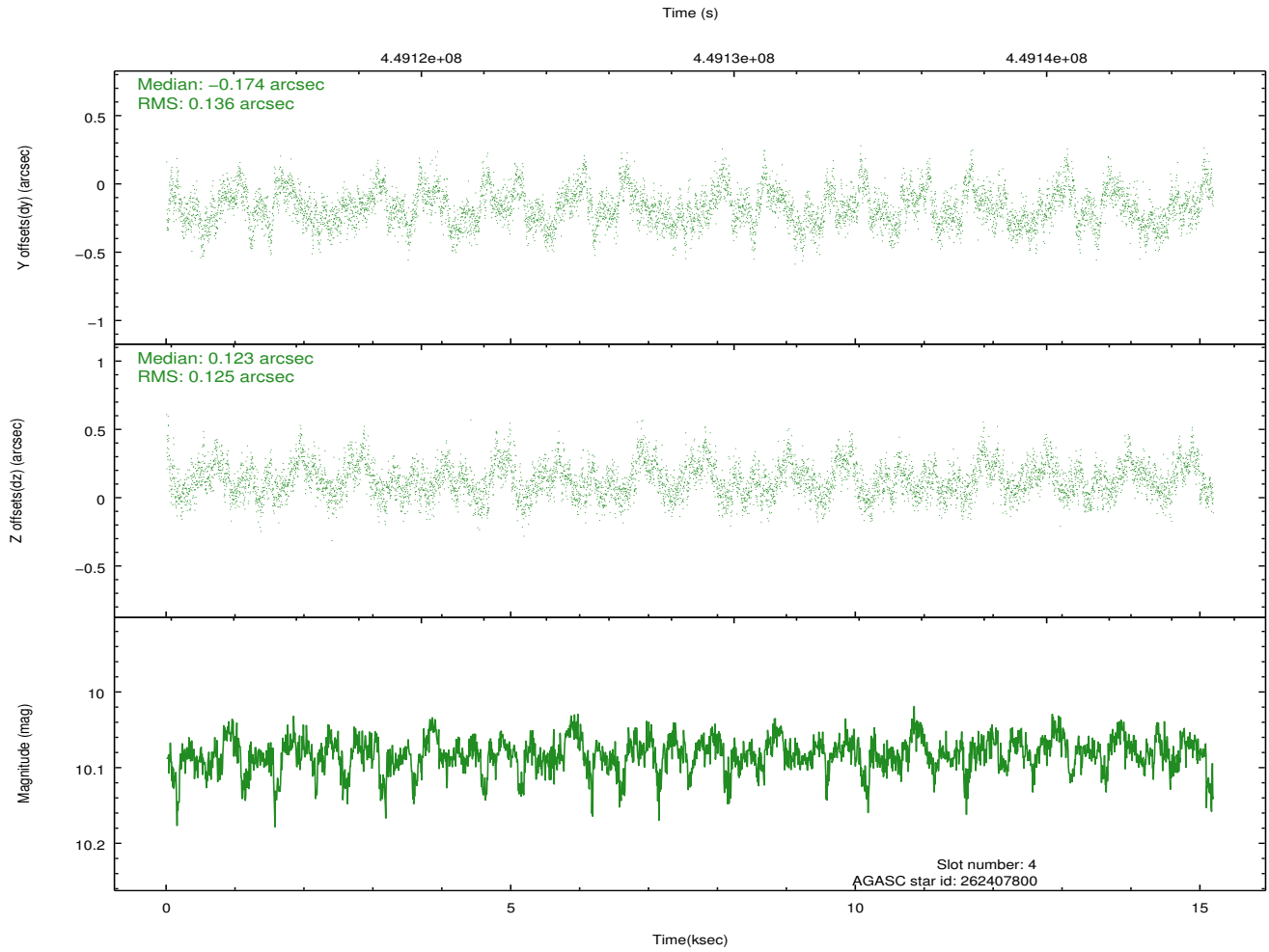
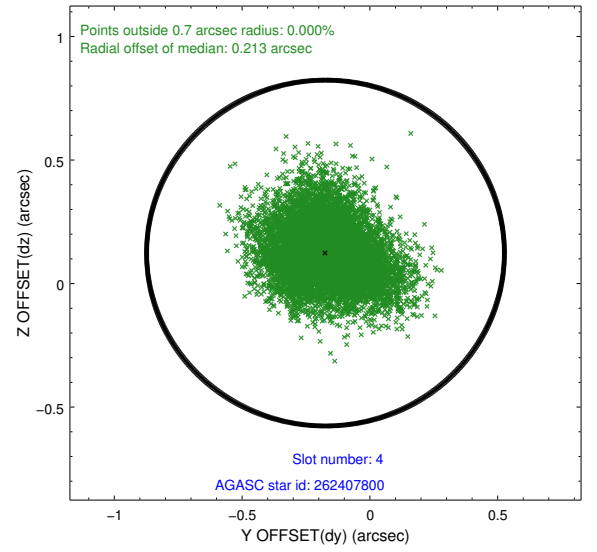
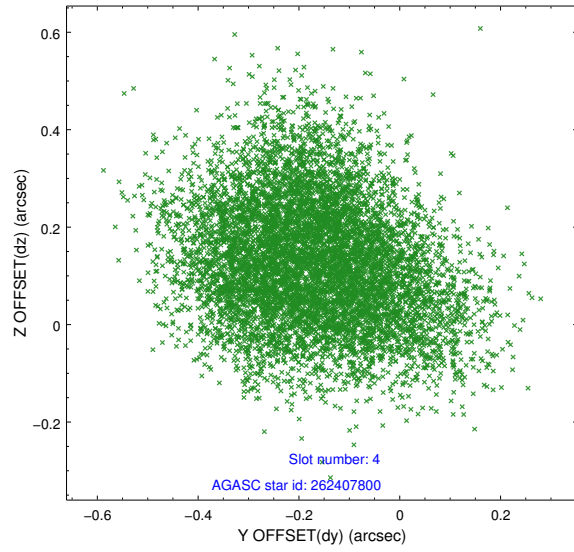
slot	status	id	mag	n_pts	med_dy	med_dz	dr1	dr2	ra	dec	mean_y	mean_z
0	FID	ACIS-I-2	7.18	3704	0.099	-0.565	0.008	0.015	0.000000	0.000000	-769.39	-419.98
1	FID	ACIS-I-5	7.16	3704	-0.215	0.431	0.009	0.014	0.000000	0.000000	-1825.15	1486.75
2	FID	ACIS-I-6	7.13	3704	0.023	0.202	0.007	0.013	0.000000	0.000000	388.65	2131.58
3	GUIDE	262407608	9.37	7406	0.118	-0.093	0.124	0.195	207.378401	26.435507	-231.45	108.05
4	GUIDE	262407800	10.08	7397	-0.174	0.123	0.198	0.315	207.321181	27.251762	1800.27	-2022.17
5	GUIDE	262408096	9.32	7397	-0.083	-0.130	0.146	0.238	207.011678	26.515421	859.87	646.20
6	GUIDE	262408936	9.71	7379	0.099	0.153	0.209	0.311	207.154731	26.726554	993.54	-231.77
7	GUIDE	262411960	9.65	7392	0.027	-0.046	0.121	0.199	207.327895	25.881727	-1388.28	1739.82

2.4 Star Slots

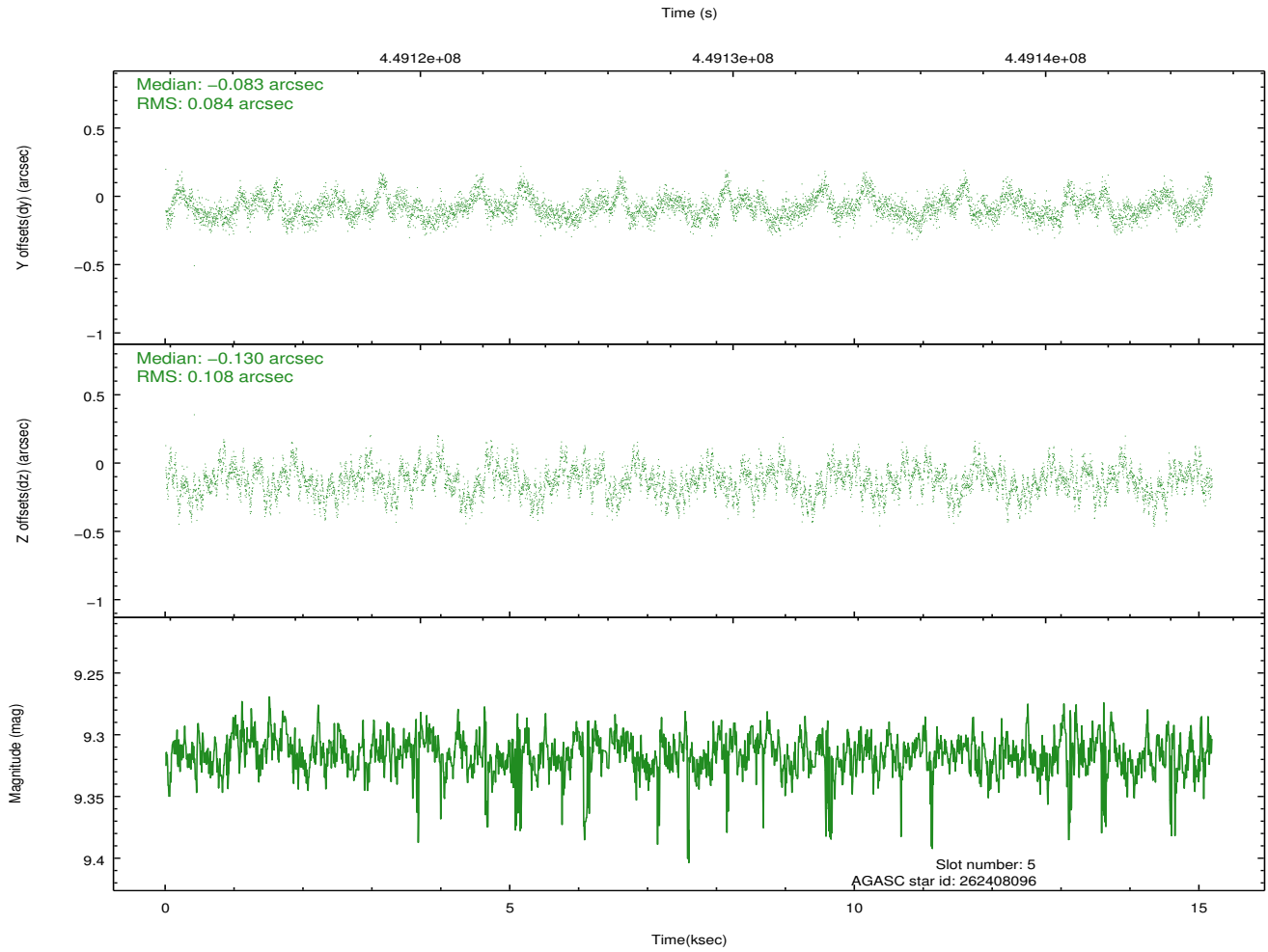
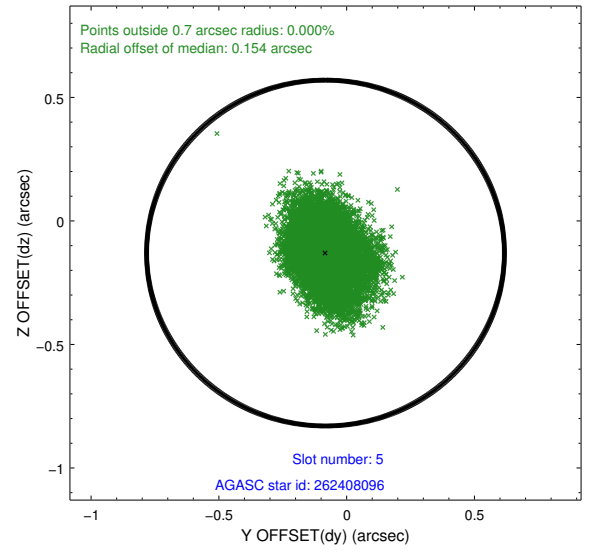
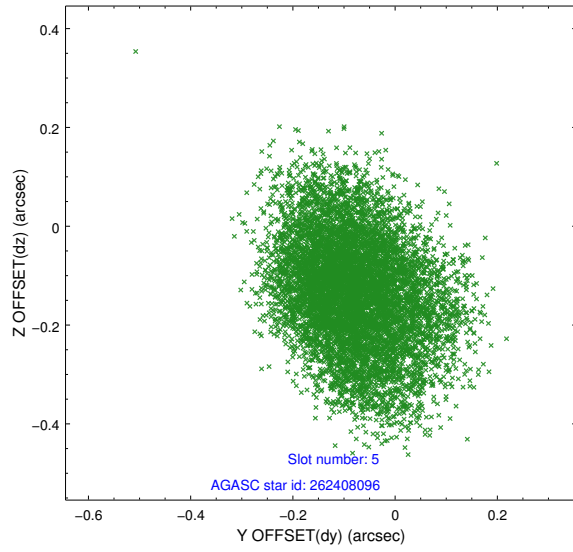
2.4.1 Slot 3



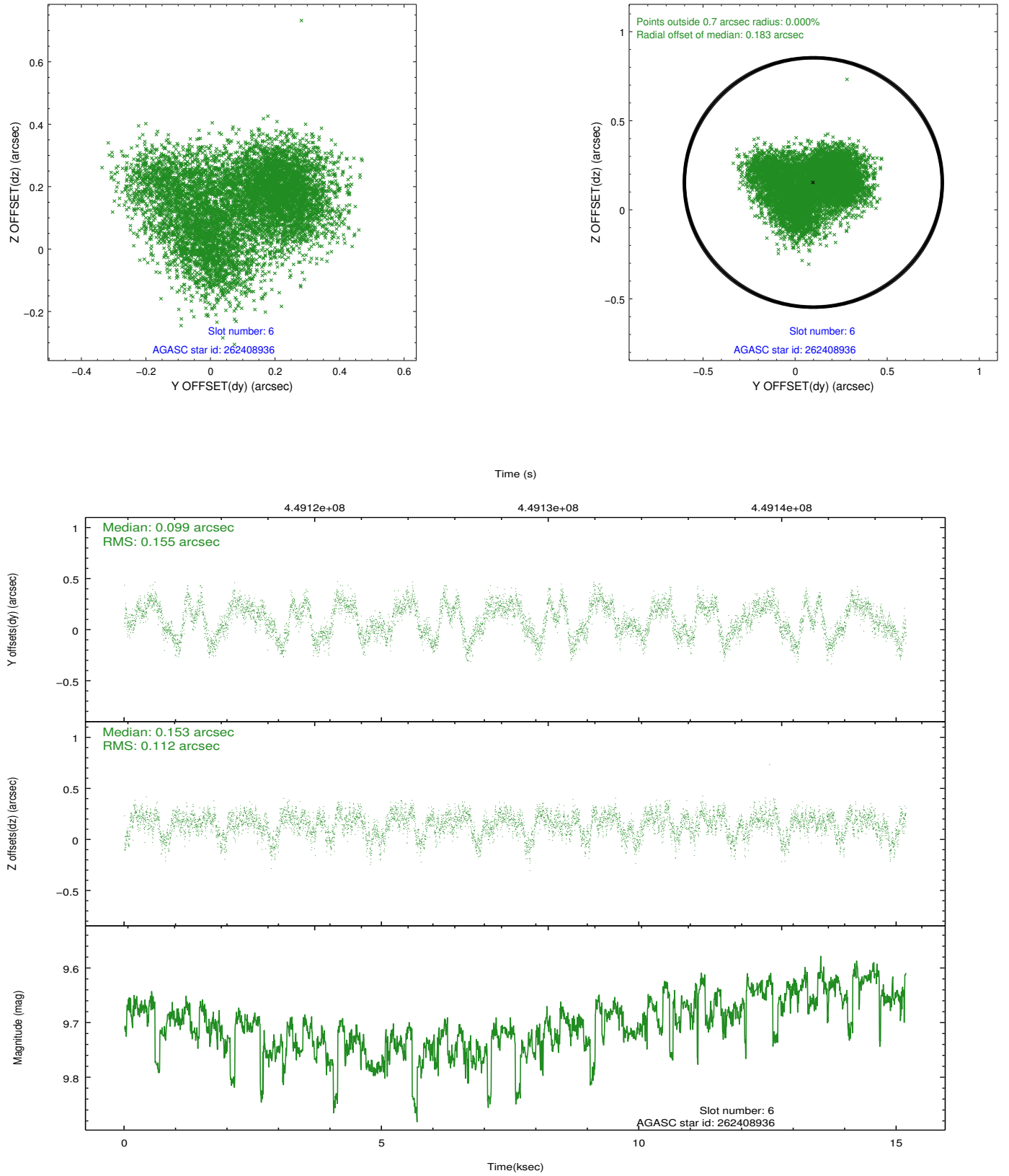
2.4.2 Slot 4



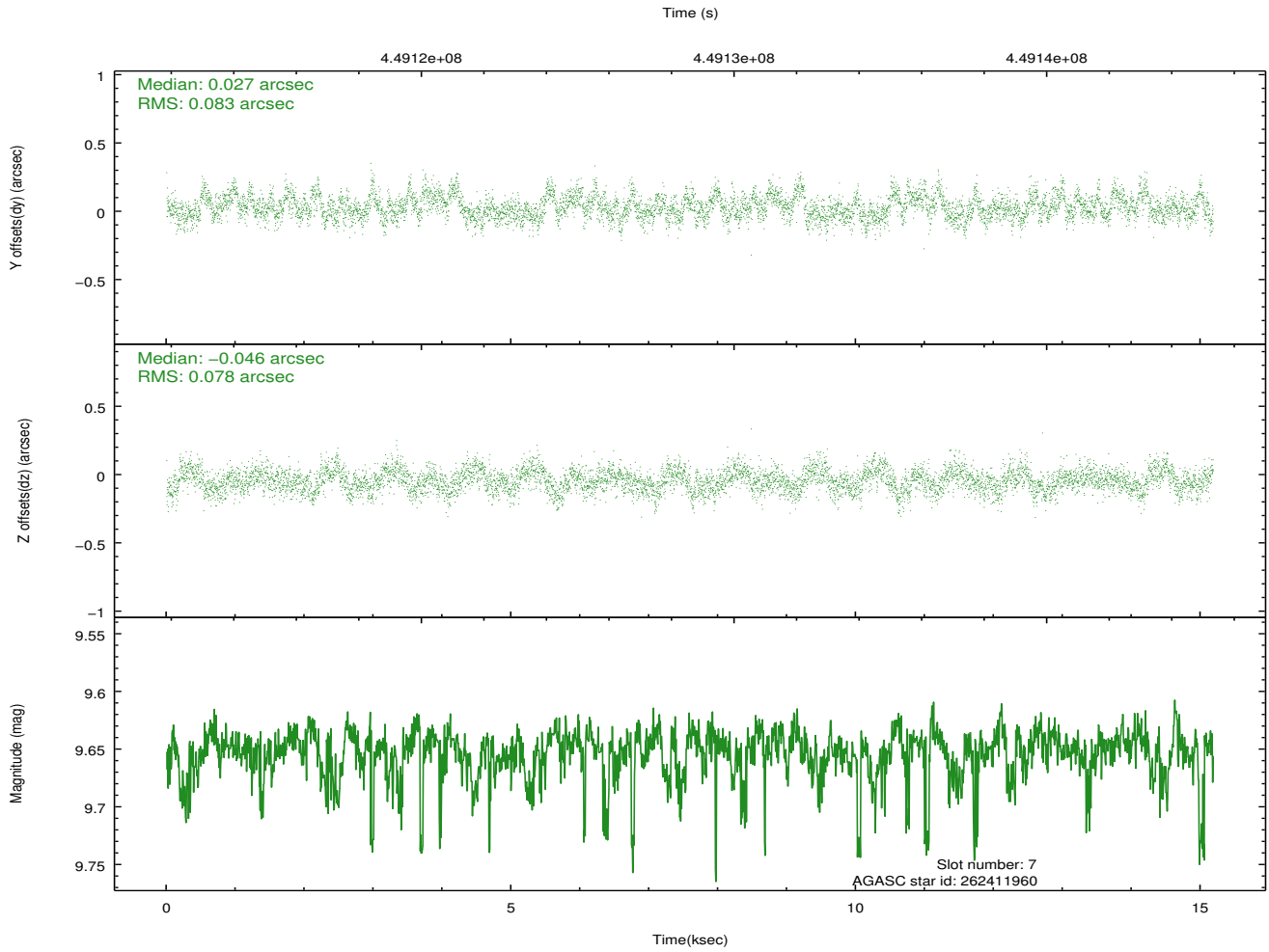
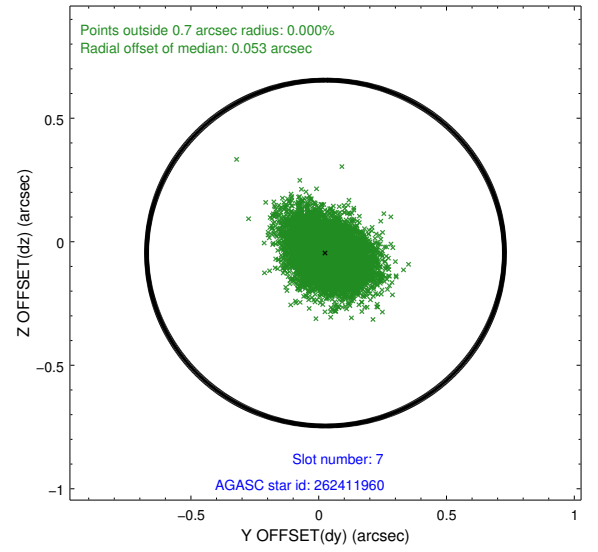
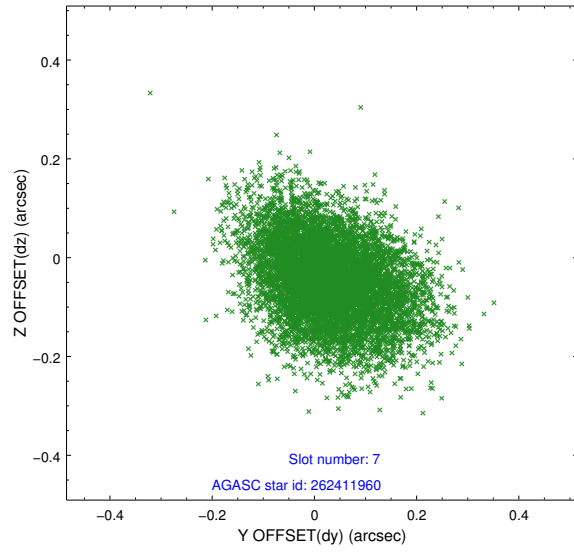
2.4.3 Slot 5



2.4.4 Slot 6

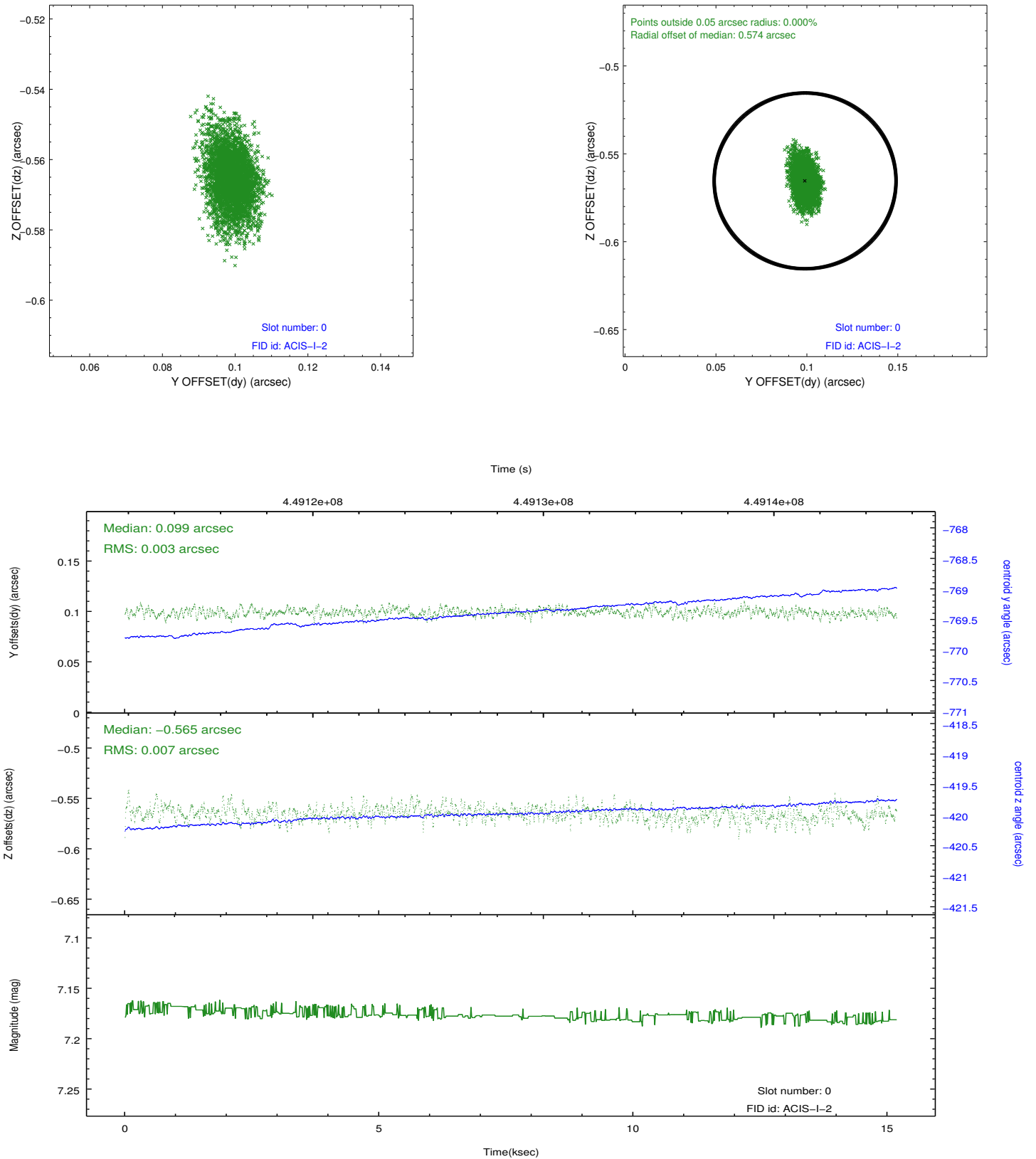


2.4.5 Slot 7

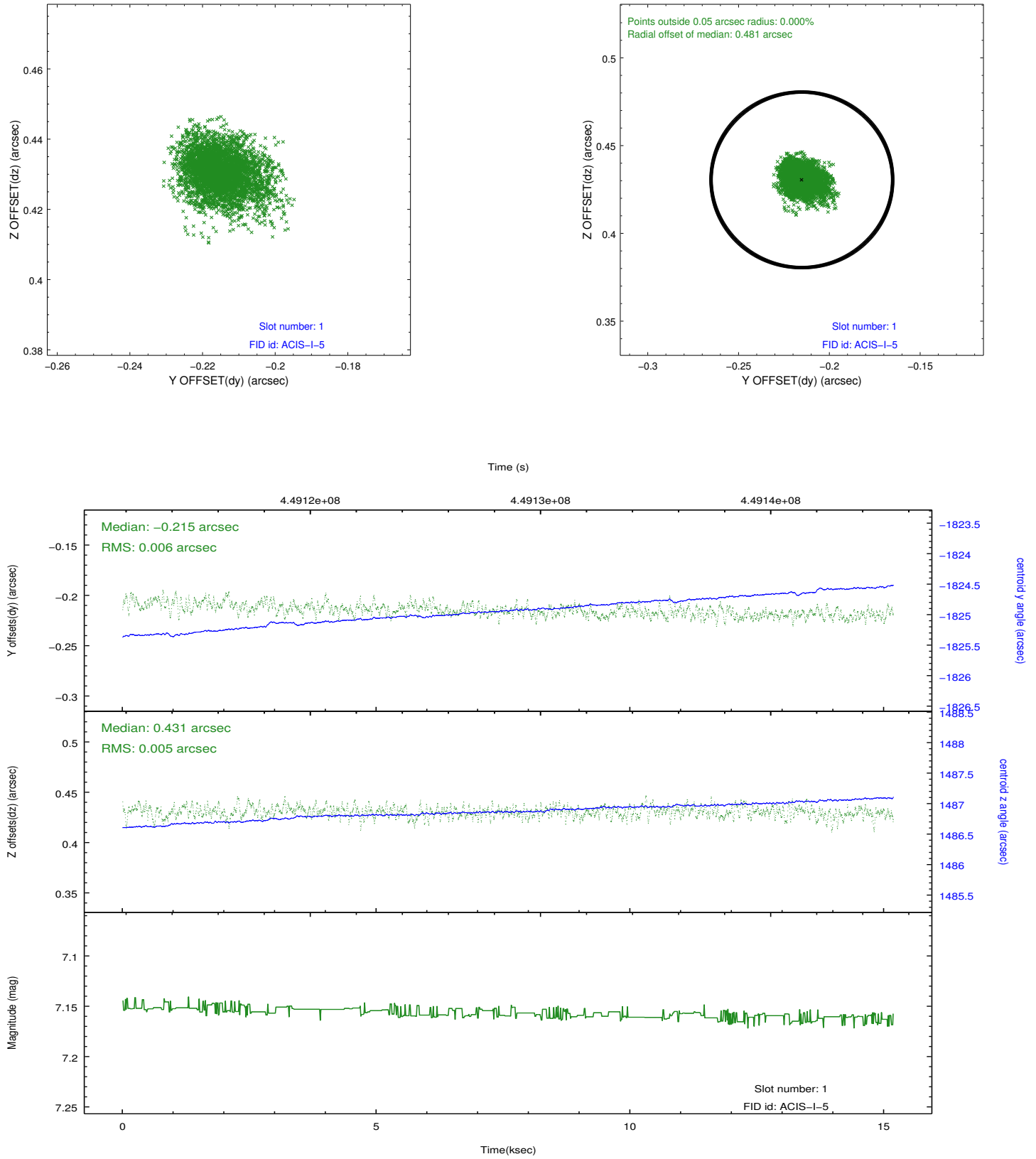


2.5 FID Slots

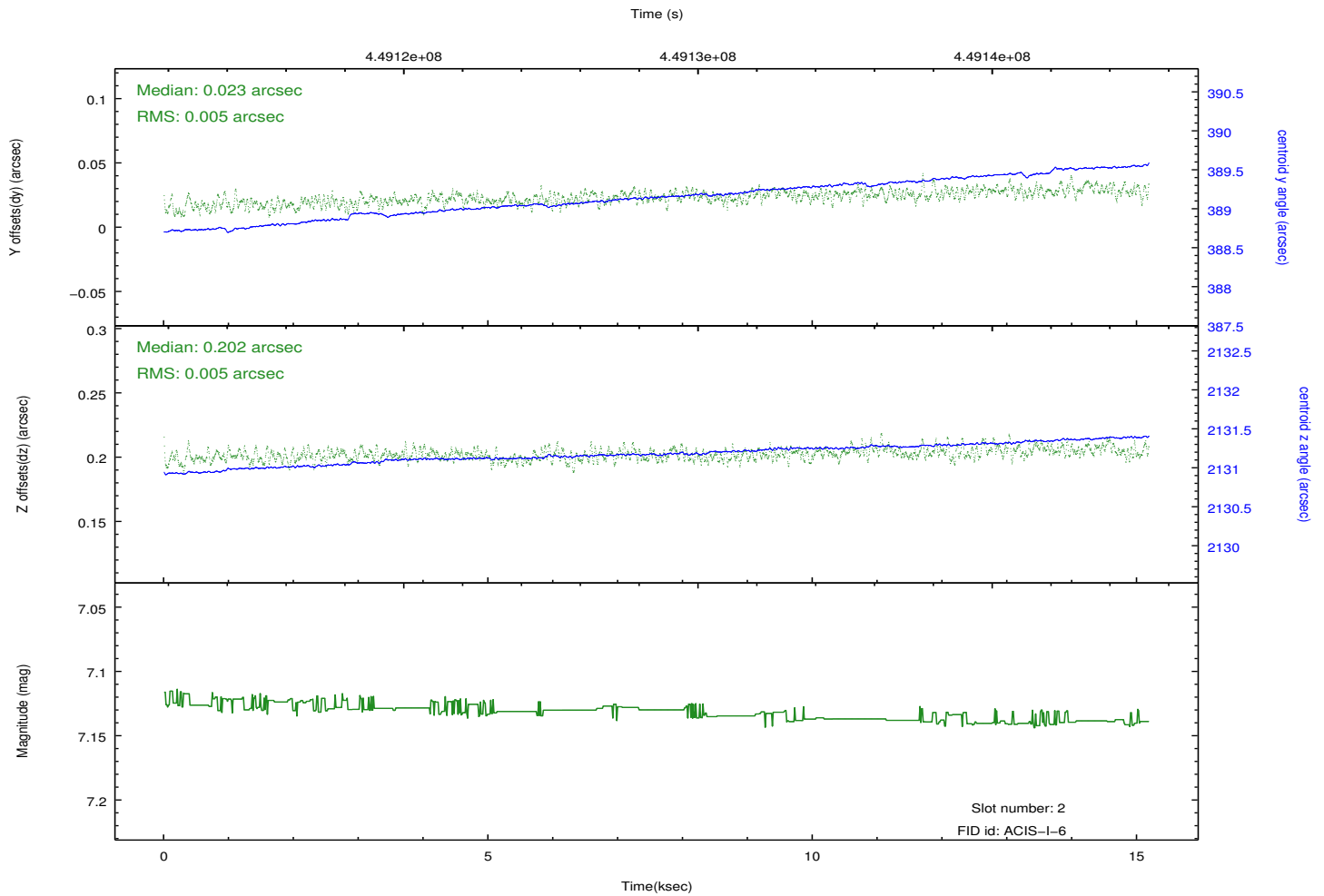
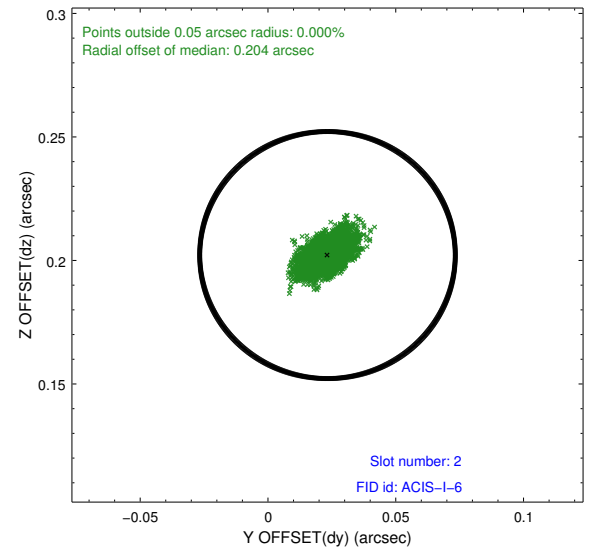
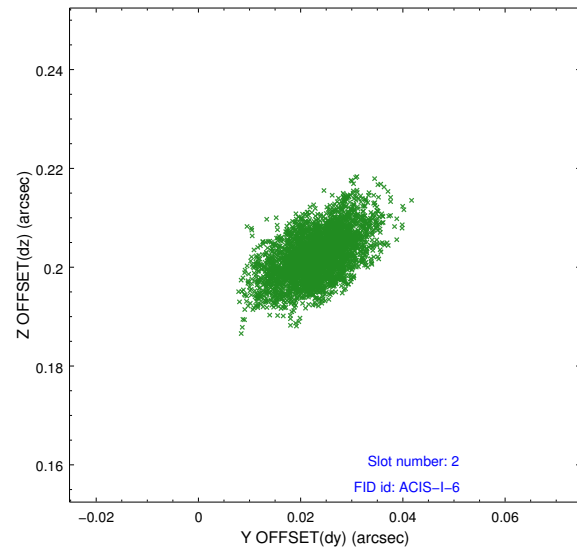
2.5.1 Slot 0



2.5.2 Slot 1



2.5.3 Slot 2



A Summary

A.1 Status

V&V Scientist	Joy Nichols
V&V Date (YYYY-MM-DD)	2012.03.29
V&V Edition	1
V&V Disposition and Status	OK
V&V Charge Time	14.777700113654

A.2 Comments

This observation has a `sim_z_offset` of 20.77 [mm]. The fid in slot 0 has a median radial offset of 0.574 arcsec. The fid in slot 1 has a median radial offset of 0.481 arcsec. These fid offsets are OK for Aspect.