

# V&V Reference Report

## L2 ASCDS Version : 8.4.3

Observation 14269 - L2 Version 1  
Chandra X-Ray Center

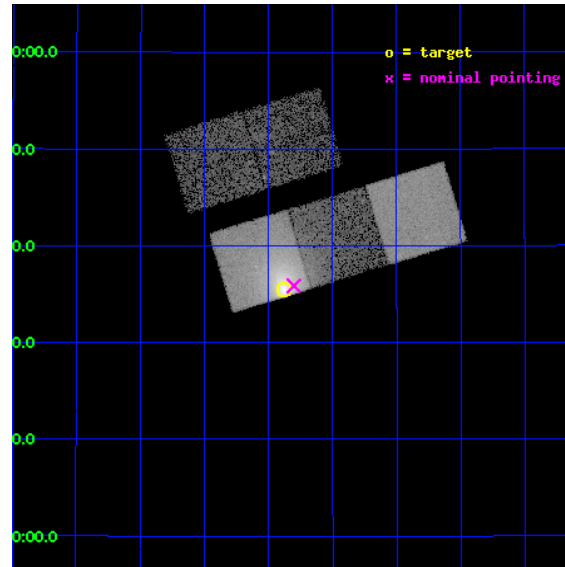
L2 Processing Date : Apr 9 2012

## Contents

<b>1</b>	<b>Front</b>	<b>2</b>
<b>2</b>	<b>OBI</b>	<b>3</b>
2.1	OBI . . . . .	3
2.1.1	Images . . . . .	3
2.1.2	Bias . . . . .	3
2.1.3	Parameters . . . . .	4
2.1.4	Events . . . . .	4
2.2	Compared Parameters . . . . .	5
2.3	Aspect . . . . .	6
2.4	Star Slots . . . . .	9
2.4.1	Slot 3 . . . . .	9
2.4.2	Slot 4 . . . . .	10
2.4.3	Slot 5 . . . . .	11
2.4.4	Slot 6 . . . . .	12
2.4.5	Slot 7 . . . . .	13
2.5	FID Slots . . . . .	14
2.5.1	Slot 0 . . . . .	14
2.5.2	Slot 1 . . . . .	15
2.5.3	Slot 2 . . . . .	16
<b>A</b>	<b>Summary</b>	<b>17</b>
A.1	Status . . . . .	17
A.2	Comments . . . . .	17

# 1 Front

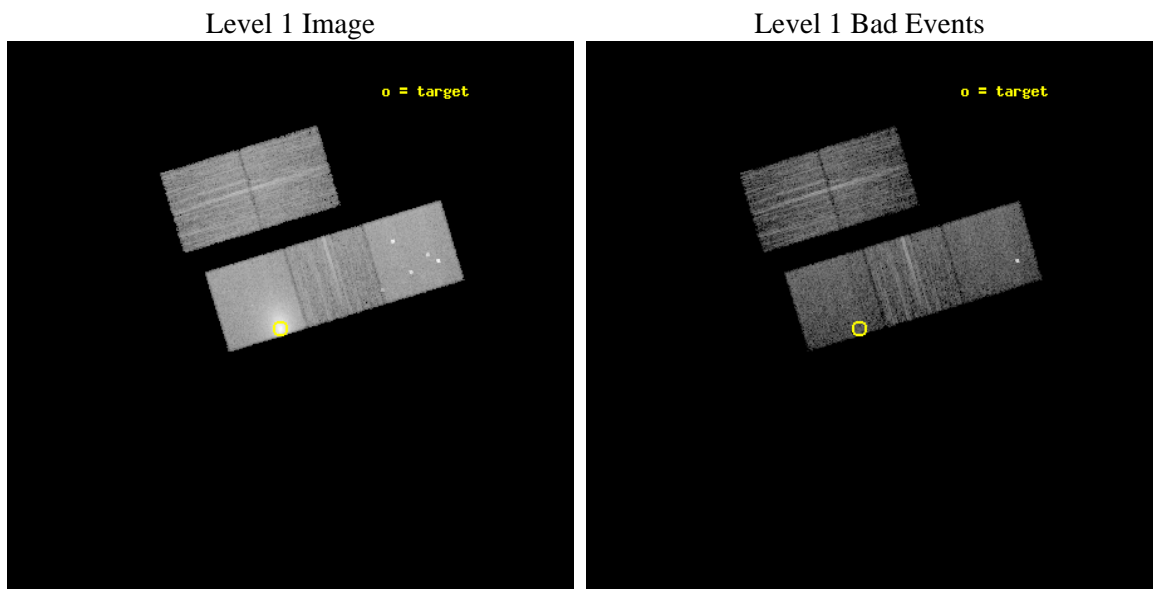
seq_num	890064	Sequence number
obs_id	14269	Observation id
title	AO-13 Calibration Observations of A1795	Proposal title
observer	Dr. CXC Calibration	Principal investigator
object	A1795	Source name
dtcycle	0	&#160
cycle	P	events from which exps? Prim/Second/Both
ra_targ	207.219583	Observer's specified target RA [deg]
dec_targ	26.590833	Observer's specified target Dec [deg]
ra_nom	207.20058760258	Nominal RA [deg]
dec_nom	26.597757285237	Nominal Dec [deg]
roll_nom	163.11327347449	Nominal Roll [deg]
revision	1	Processing version of data
ontime	10068.800077438	Sum of GTIs [s]
livetime	9937.2437918838	Livetime [s]
ontime2	10068.800077438	Sum of GTIs [s]
ontime3	10068.800077438	Sum of GTIs [s]
ontime5	10068.800077438	Sum of GTIs [s]
ontime6	10065.659067214	Sum of GTIs [s]
ontime7	10068.800077438	Sum of GTIs [s]
l2events	171527	Number of level 2 events



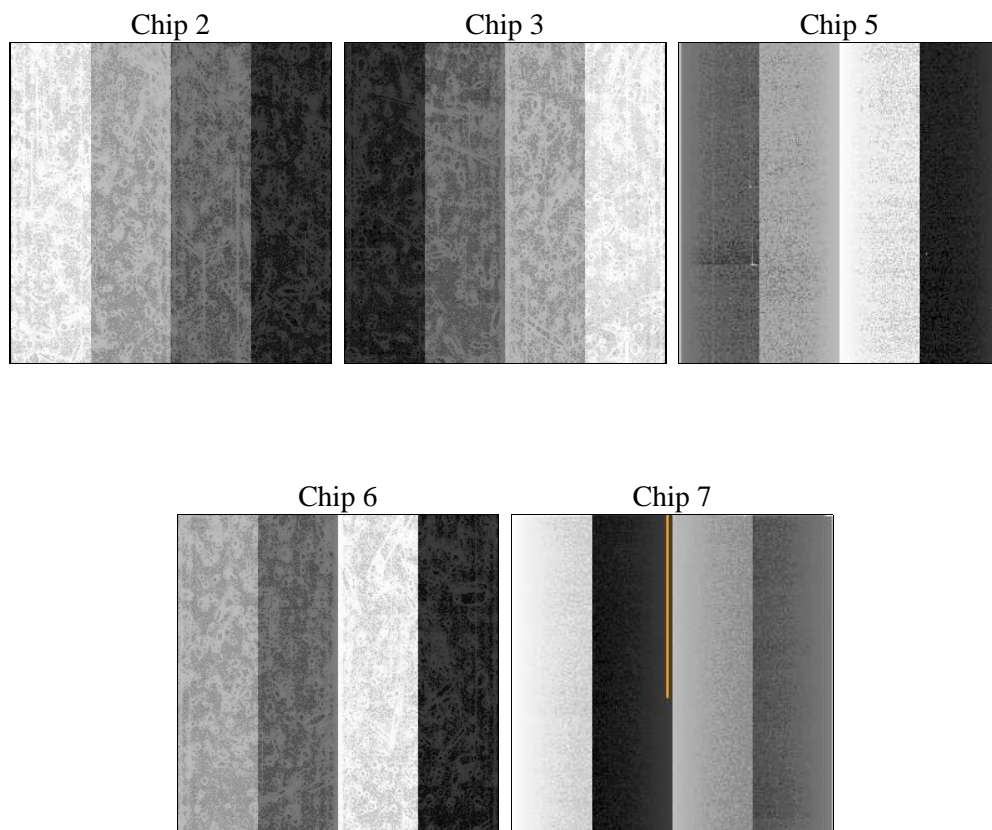
## 2 OBI

### 2.1 OBI

#### 2.1.1 Images



#### 2.1.2 Bias



### 2.1.3 Parameters

obi_num	0	Obi number	sched_exp_time	10000.000000	[s] Scheduled observation exposure time
ascdsver	8.4.3	Processing system revision	ontime	10068.800077438	Sum of GTIs [s]
caldsver	4.4.9	&#160	ontime2	10068.800077438	Sum of GTIs [s]
date	2012-04-09T20:49:55	Date and time of file creation	ontime3	10068.800077438	Sum of GTIs [s]
revision	1	Processing version of data	ontime5	10068.800077438	Sum of GTIs [s]
			ontime6	10065.659067214	Sum of GTIs [s]
			ontime7	10068.800077438	Sum of GTIs [s]
			l1events	421900	Number of level 1 events

### 2.1.4 Events

	ccd 2	ccd 3	ccd 5	ccd 6	ccd 7
level 1 events	55039	56198	97993	61621	151049
rejected events	48353	49772	48490	50221	42257
rejected %	87%	88%	49%	81%	27%

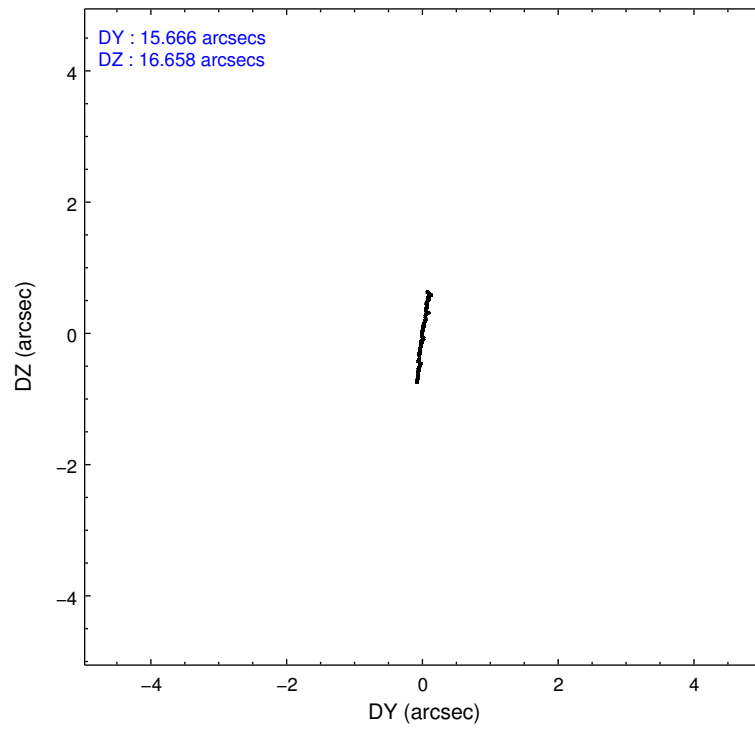
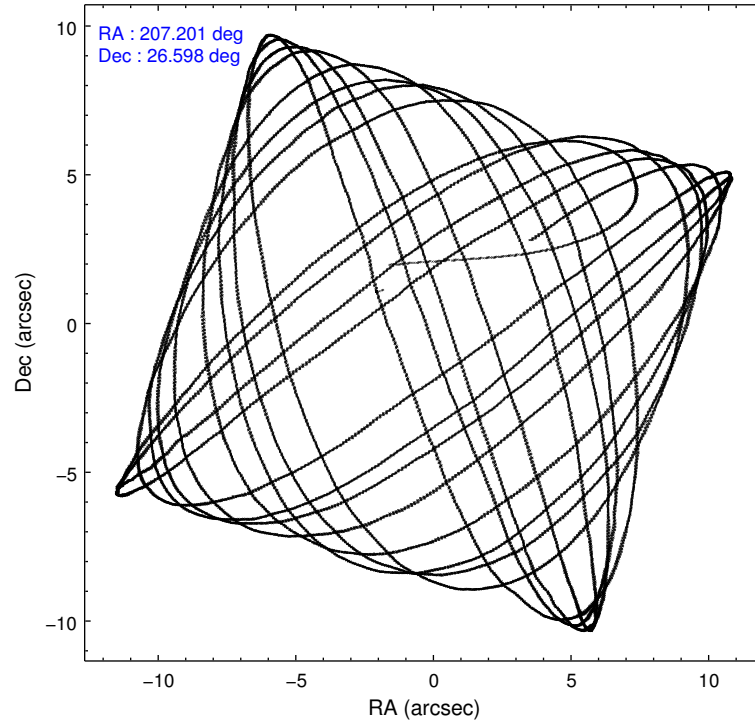
	ccd 2	ccd 3	ccd 5	ccd 6	ccd 7
grade 0 events	2507	2346	7822	6002	23766
	4%	4%	7%	9%	15%
grade 1 events	32	35	326	42	106
	0%	0%	0%	0%	0%
grade 2 events	1573	1364	14309	2058	26693
	2%	2%	14%	3%	17%
grade 3 events	669	672	1776	855	11738
	1%	1%	1%	1%	7%
grade 4 events	695	769	1722	796	11647
	1%	1%	1%	1%	7%
grade 5 events	2524	2808	7685	2820	8293
	4%	4%	7%	4%	5%
grade 6 events	1244	1277	23887	1693	35001
	2%	2%	24%	2%	23%
grade 7 events	45795	46927	40466	47355	33805
	83%	83%	41%	76%	22%

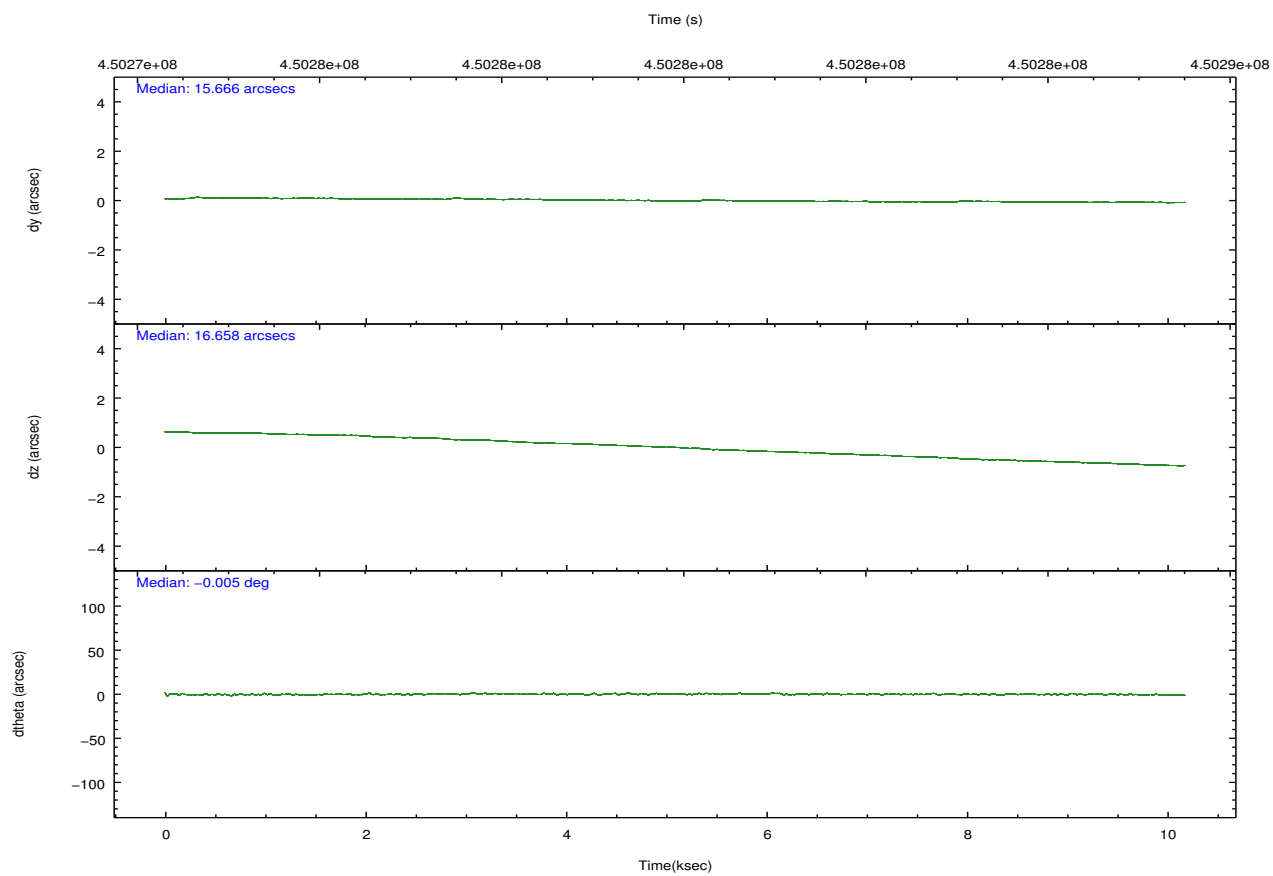
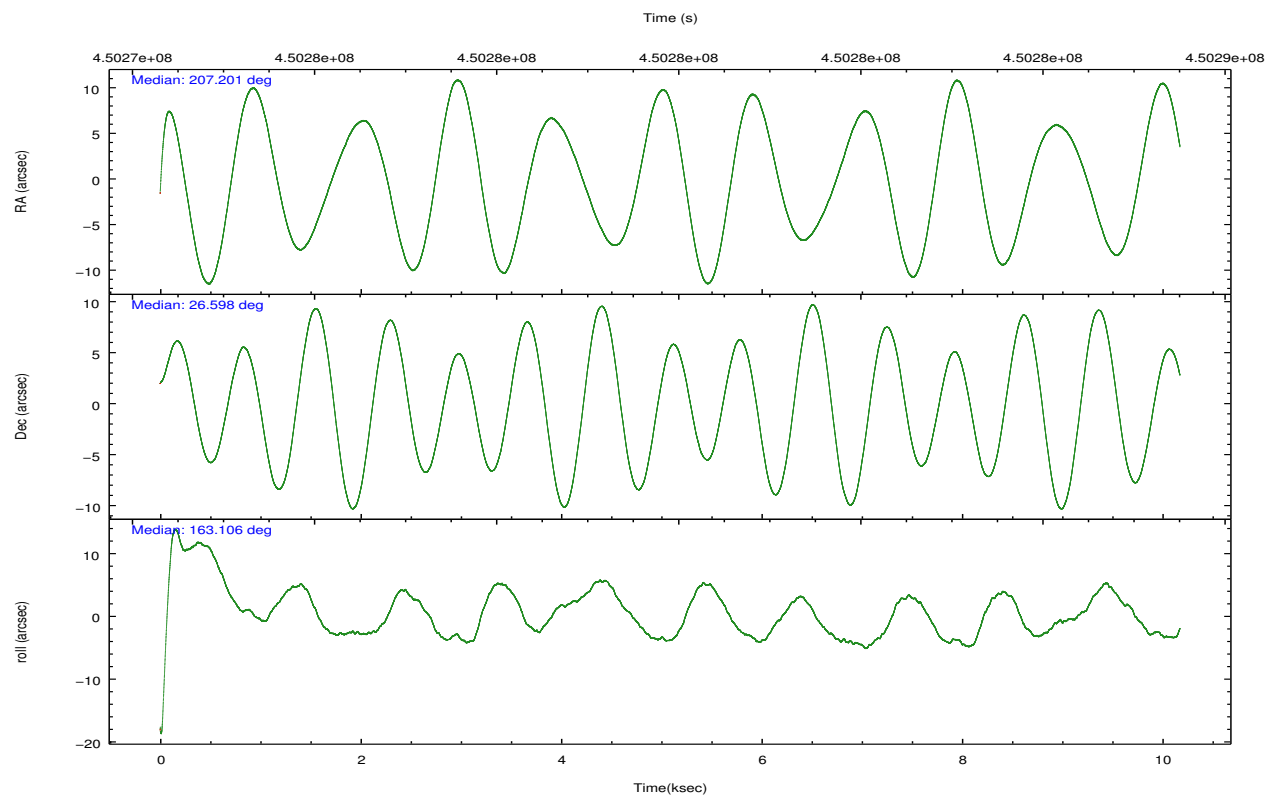
## 2.2 Compared Parameters

Parameter	Planned	Actual
Instrument	ACIS	ACIS
Detector	ACIS-23567	ACIS-23567
Grating	NONE	NONE
Data mode	VFAINT	VFAINT
Observation mode	POINTING	POINTING
[deg] Pointing RA	207.230246	207.2005876025754
[deg] Pointing Dec	26.604294	26.59775728523712
[deg] Pointing Roll	162.943410	163.1132734744948
[mm] SIM focus pos	-0.684267	-0.6828225247311905
[mm] SIM defocus	0	0.001444936568705701
[mm] SIM translation stage pos	-180.332523	-180.3266934278832
[mm] SIM translation stage offset	-9.800000000000001	-9.805829155124599
[s] Observation start time (MET)	450274984.184000	450273821.87143
Observation start date	2012-04-08T12:21:58	2012-04-08T12:03:41
[s] Observation end time (MET)	450284984.184000	450286261.27209
Observation end date	2012-04-08T15:08:38	2012-04-08T15:31:01
Read mode	TIMED	TIMED

Parameter	Planned	Actual
Obspar format version number	7	7
Obspar file type	PREDICTED	ACTUAL
Obspar update status	NONE	UPDATED
Number of optional ACIS chips dropped	0	0
On-chip summing requested	N	N
Subarray requested	NONE	NONE
Alternating exposures requested	N	N
[s] Primary exposure time	0.000000	3.1

## 2.3 Aspect



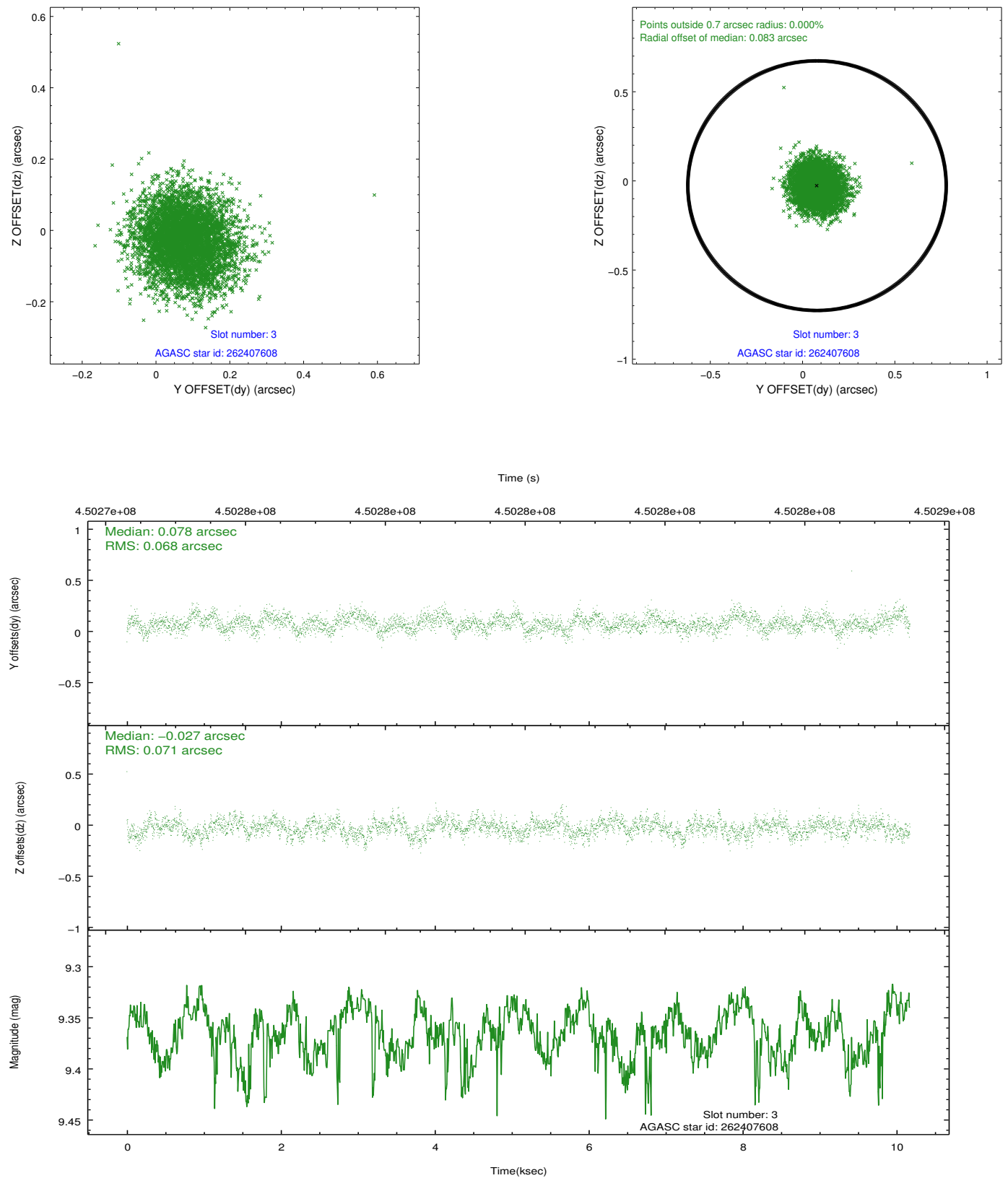


### Slot Statistics

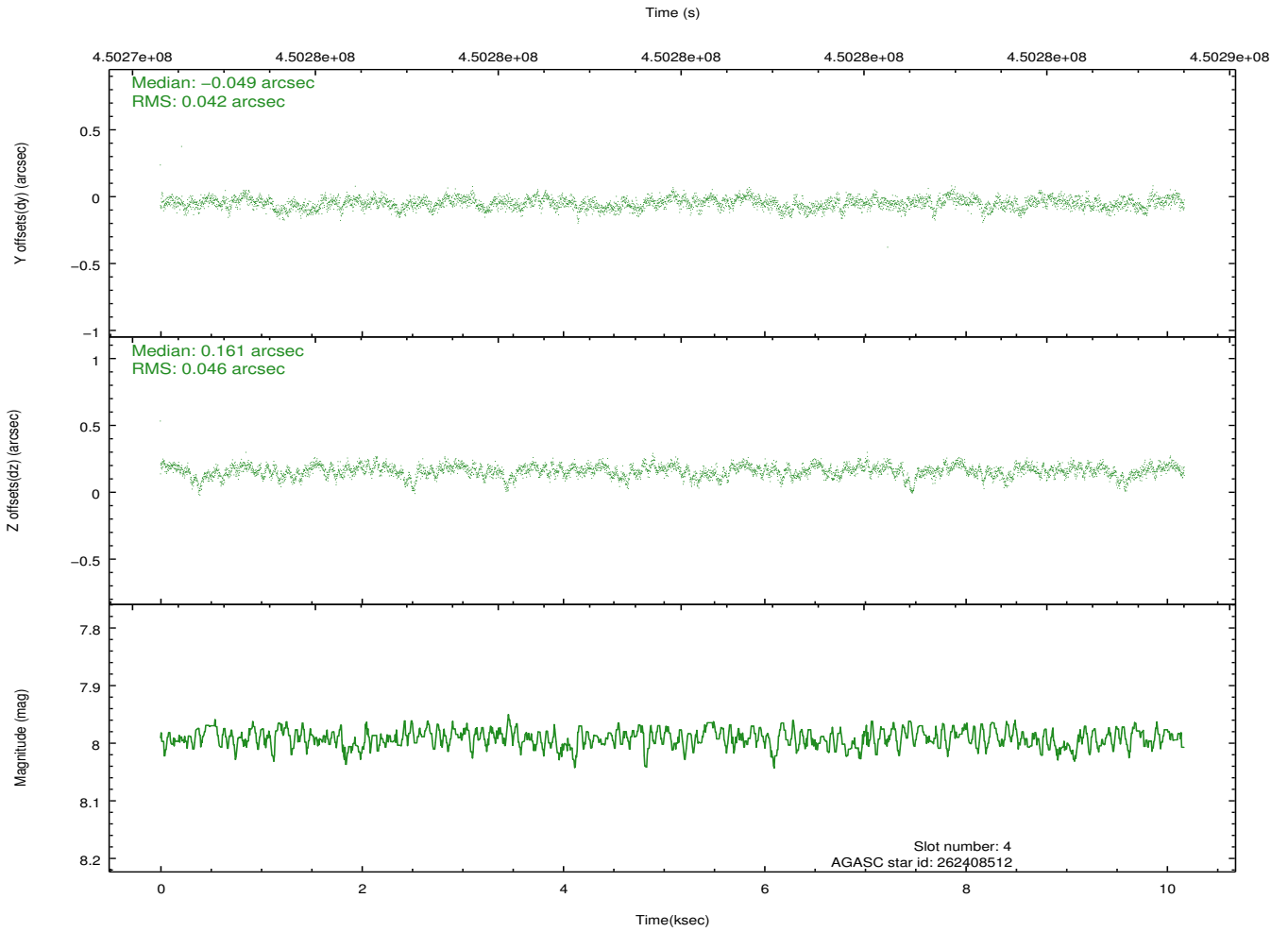
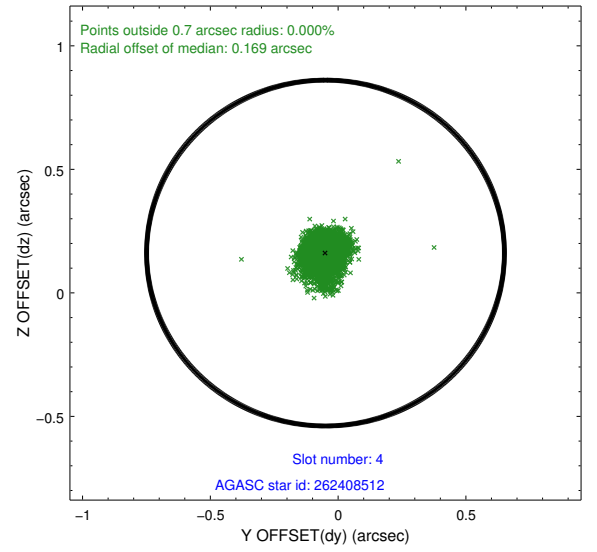
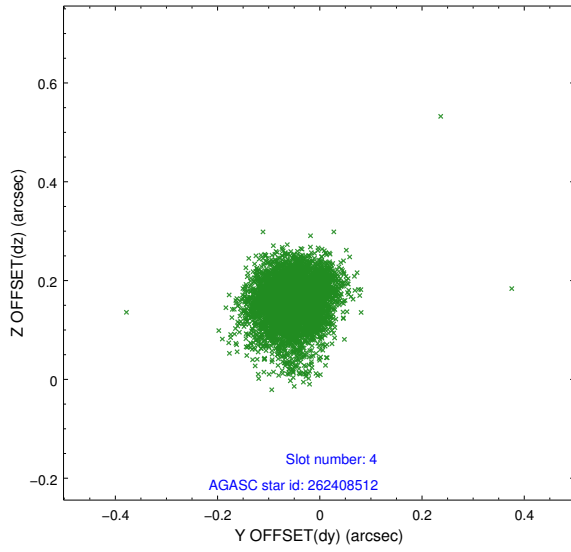
slot	status	id	mag	n_pts	med_dy	med_dz	dr1	dr2	ra	dec	mean_y	mean_z
0	FID	ACIS-S-1	7.02	2481	0.111	0.189	0.013	0.021	0.000000	0.000000	928.20	-1935.43
1	FID	ACIS-S-2	6.92	2482	-0.223	-0.132	0.010	0.022	0.000000	0.000000	-767.75	-1940.92
2	FID	ACIS-S-6	7.24	2482	0.091	-0.053	0.010	0.016	0.000000	0.000000	393.61	605.03
3	GUIDE	262407608	9.36	4959	0.078	-0.027	0.105	0.168	207.378401	26.435507	-634.56	440.88
4	GUIDE	262408512	7.99	4962	-0.049	0.161	0.064	0.106	207.800210	27.128796	-1190.37	-2344.23
5	GUIDE	262408936	9.67	4960	0.058	0.154	0.130	0.210	207.154731	26.726554	361.18	-349.40
6	GUIDE	262408096	9.33	4961	-0.068	-0.071	0.122	0.198	207.011678	26.515421	580.16	512.12
7	GUIDE	262411960	9.65	4934	-0.008	-0.217	0.151	0.254	207.327895	25.881727	-1065.27	2394.12

## 2.4 Star Slots

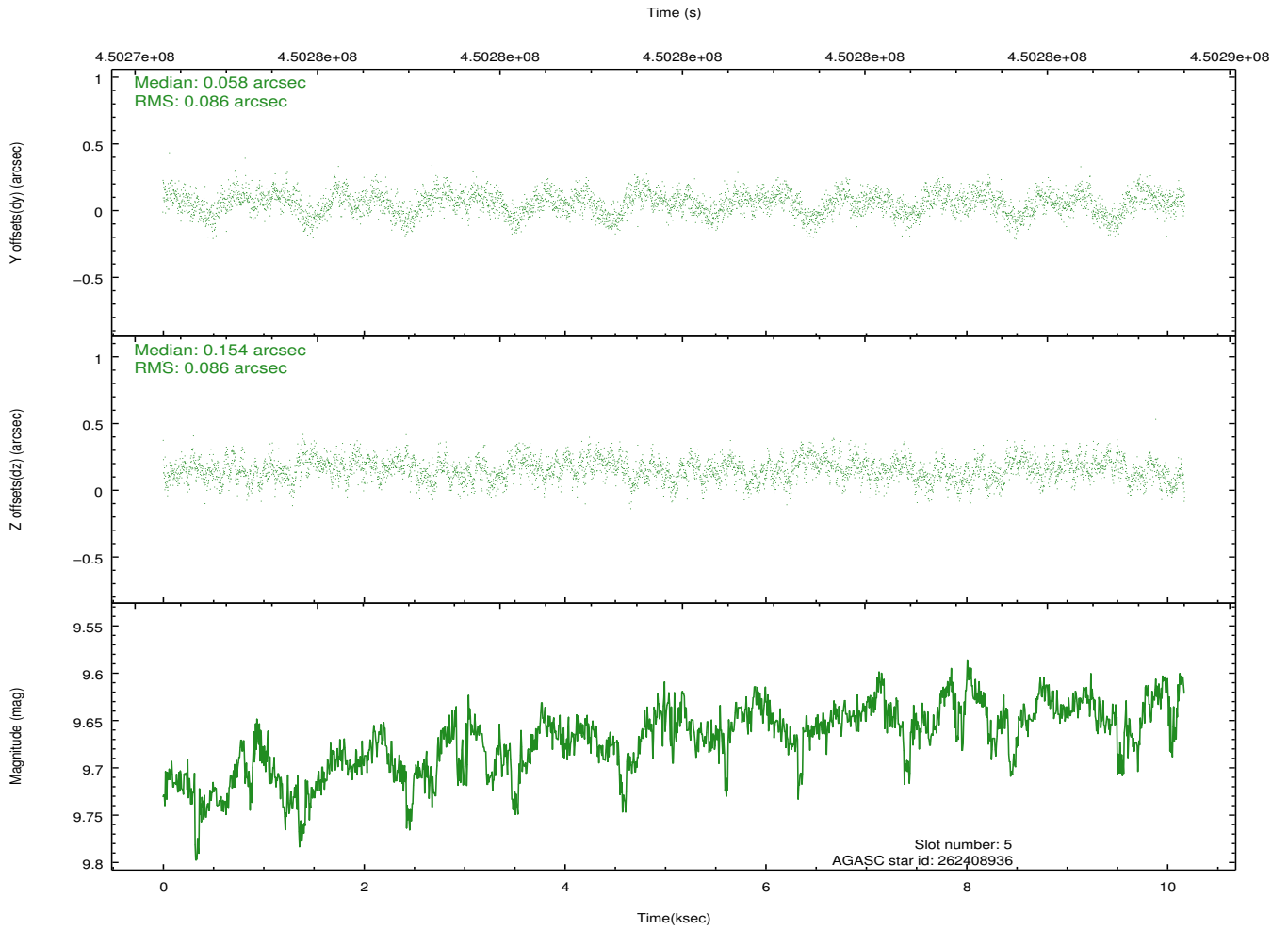
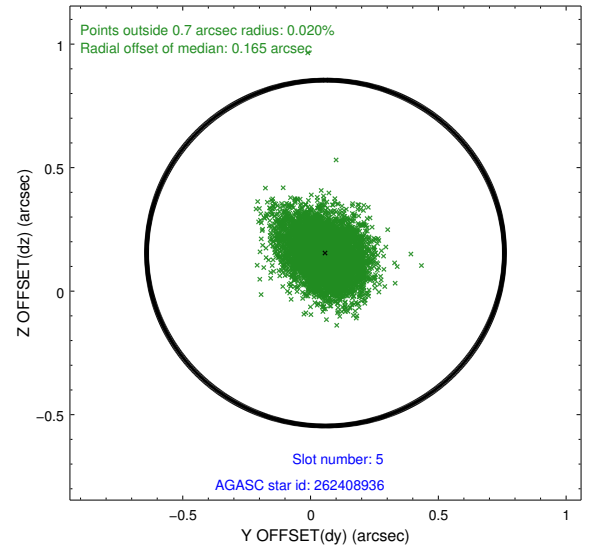
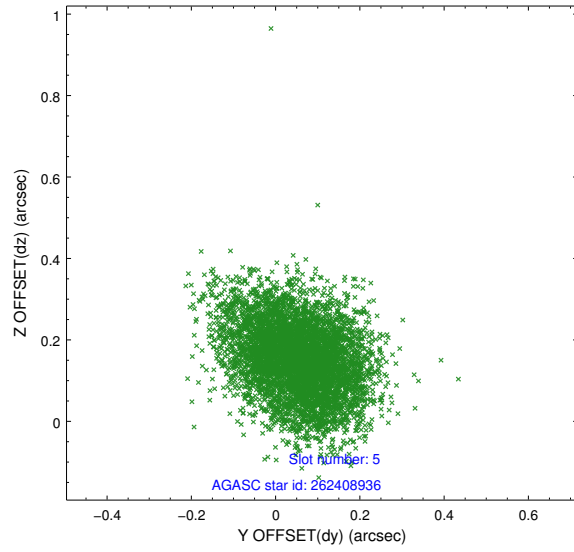
### 2.4.1 Slot 3



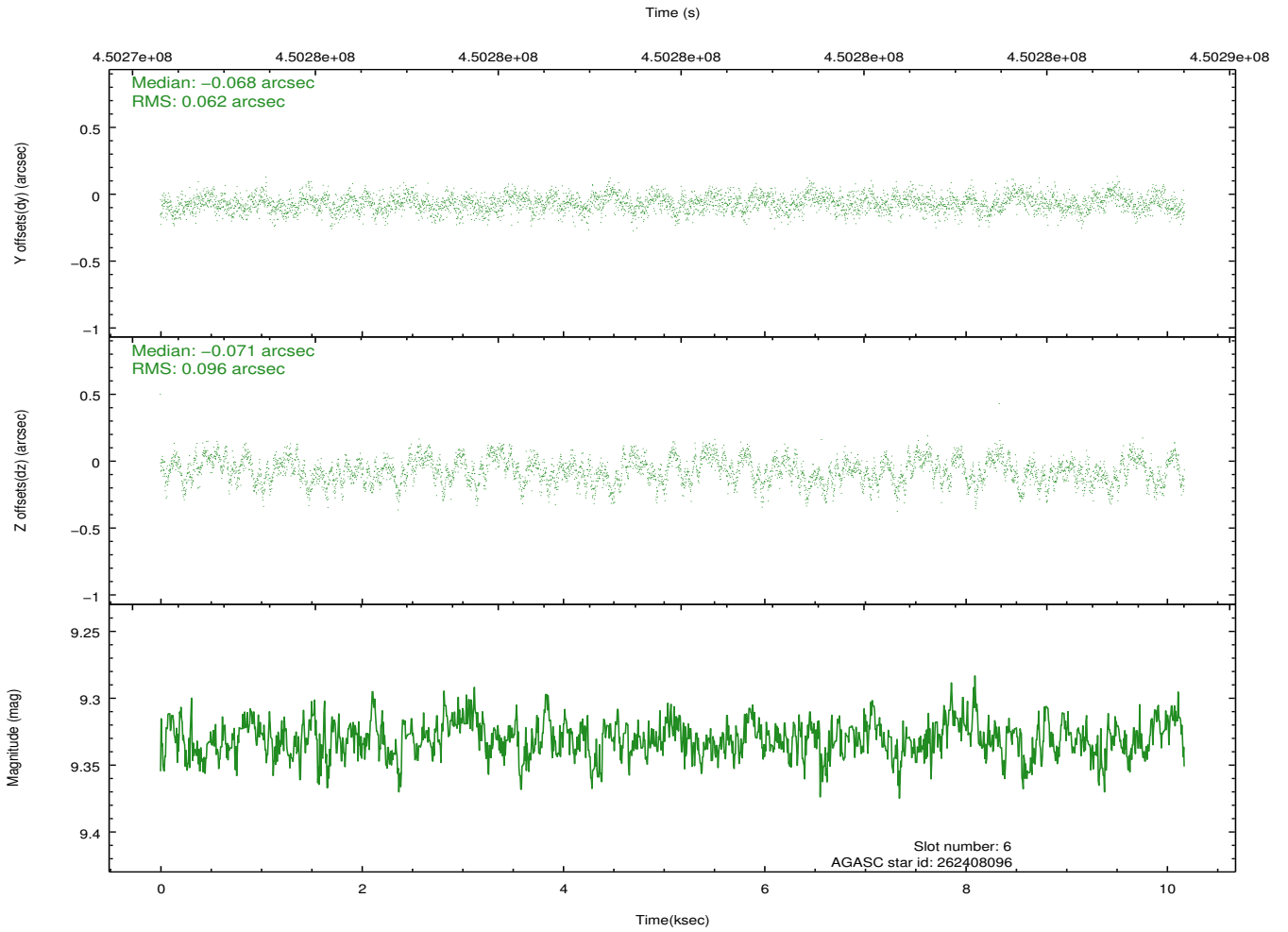
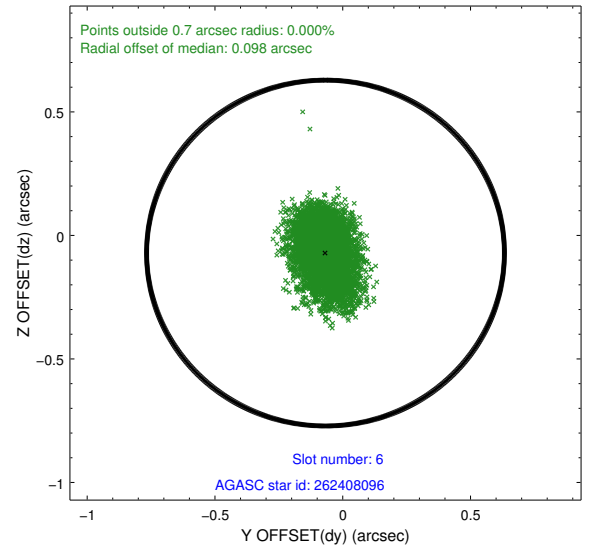
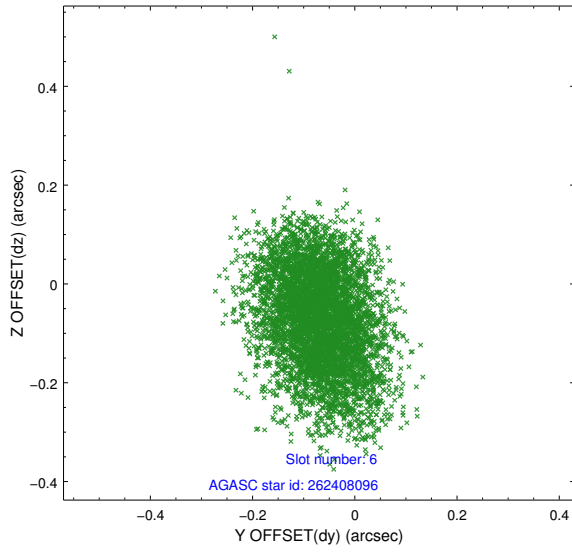
## 2.4.2 Slot 4



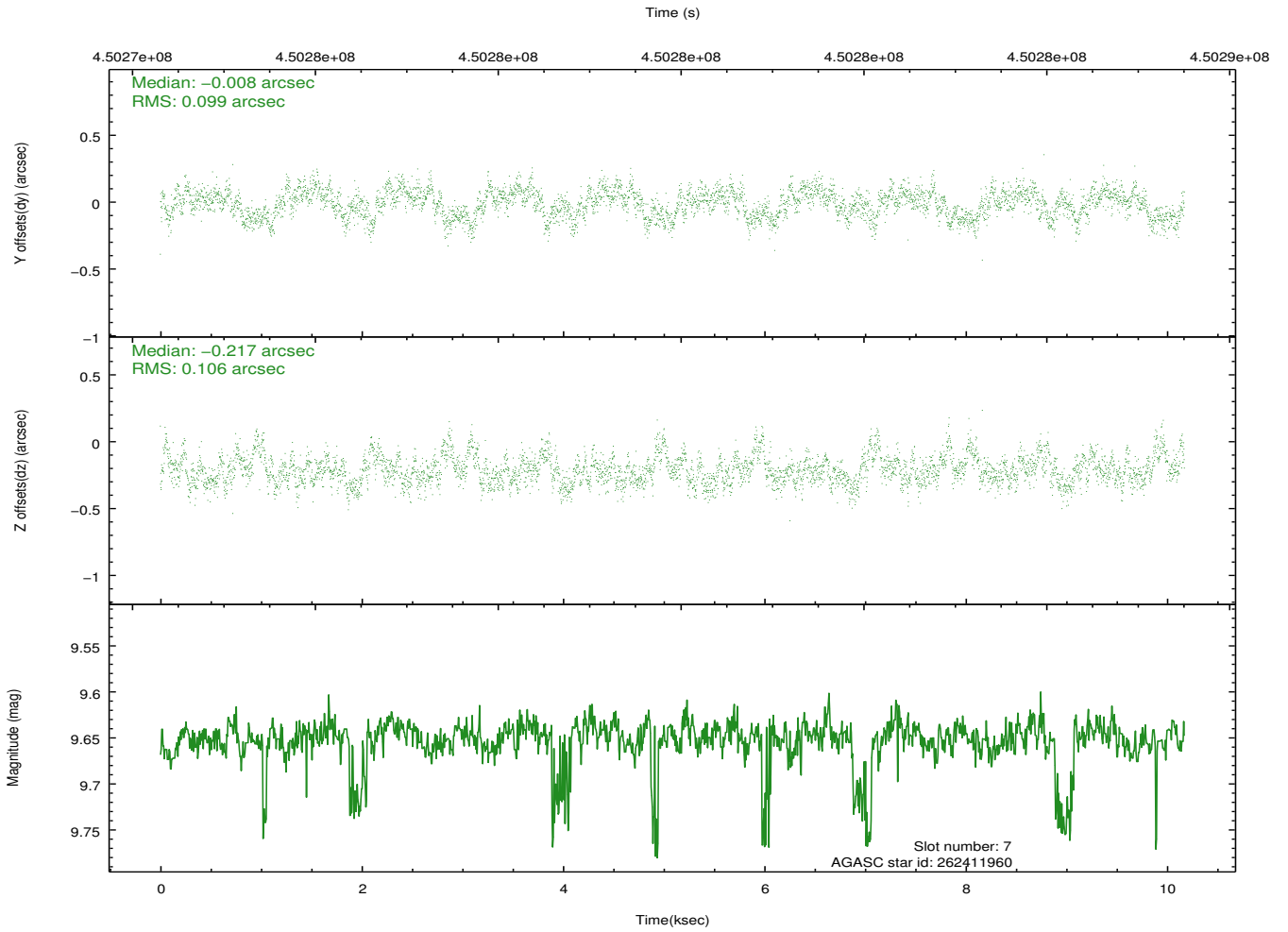
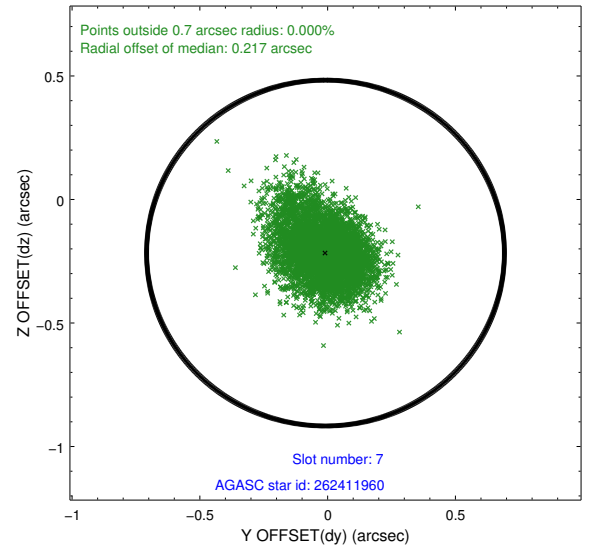
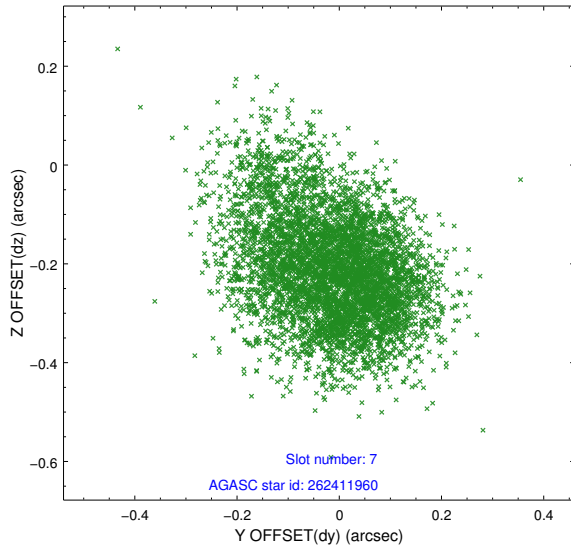
### 2.4.3 Slot 5



## 2.4.4 Slot 6

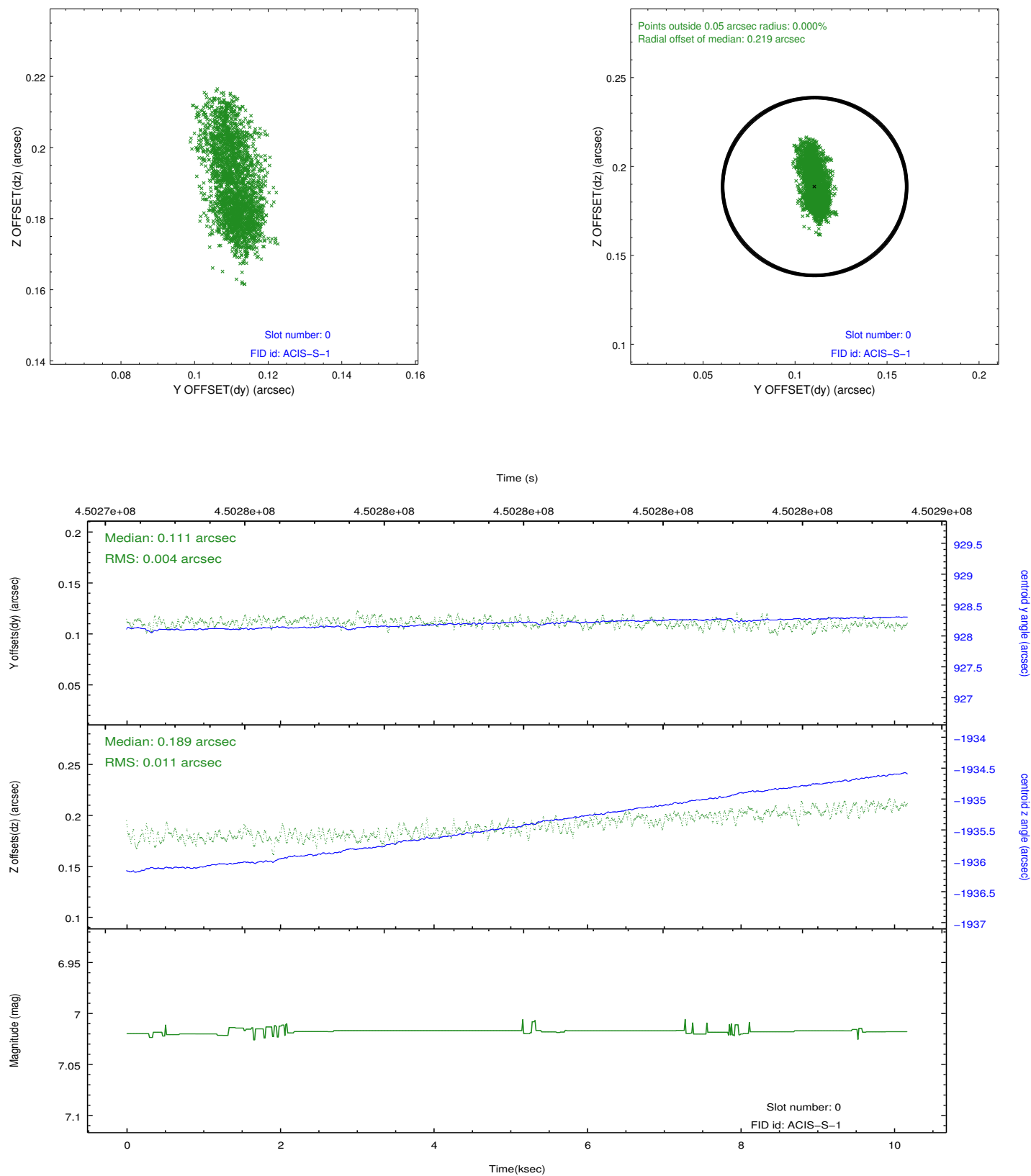


## 2.4.5 Slot 7

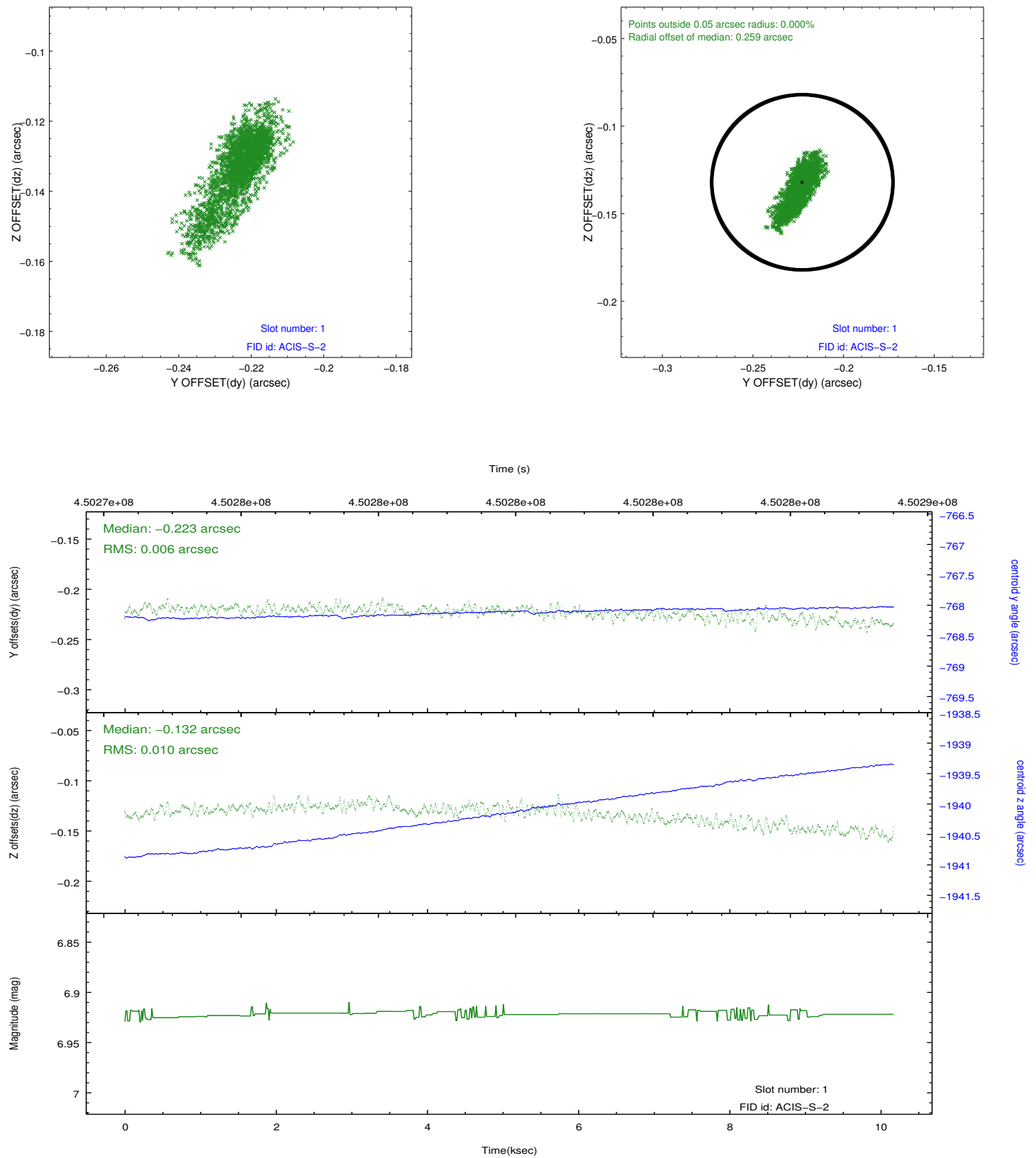


## 2.5 FID Slots

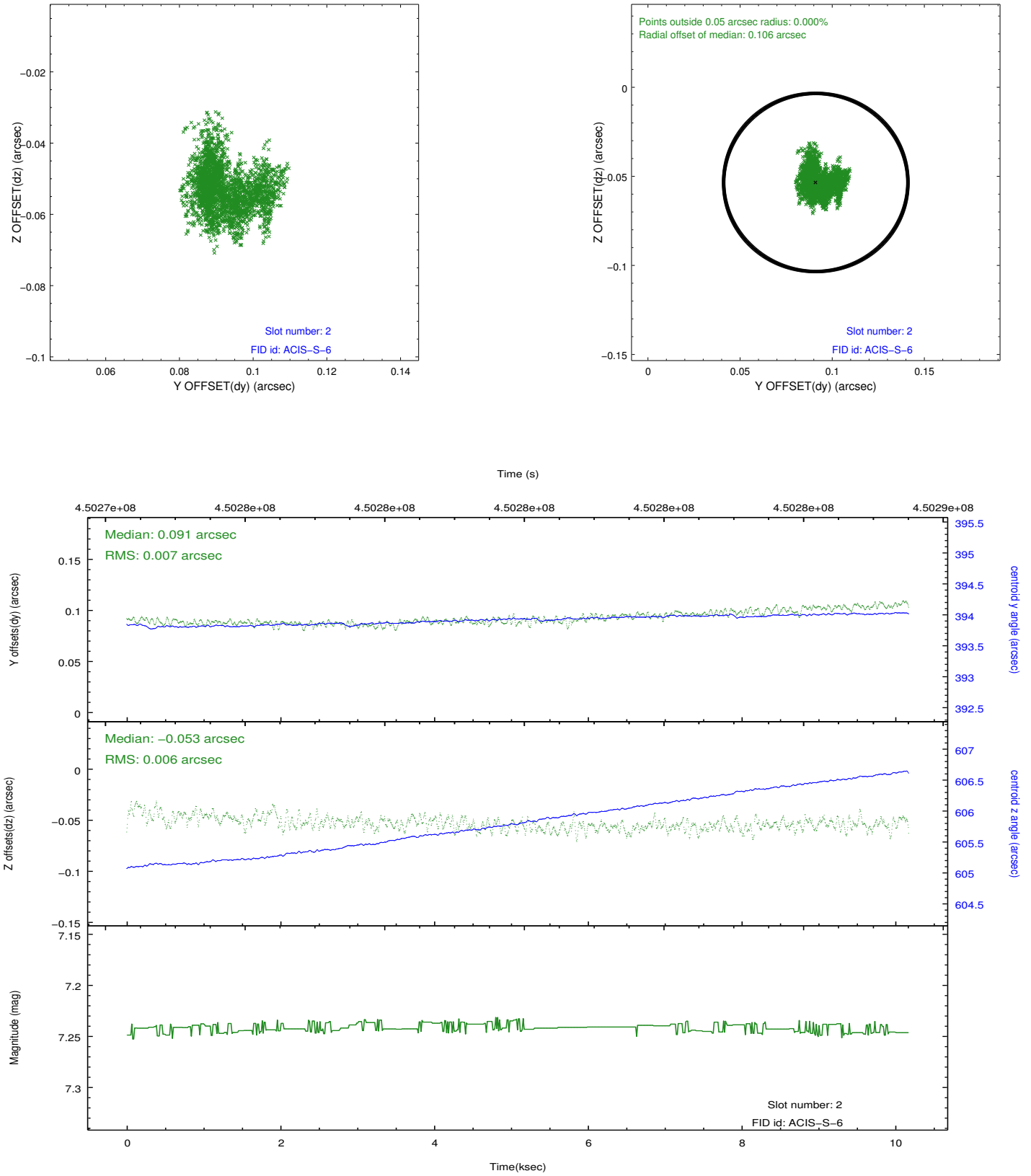
### 2.5.1 Slot 0



## 2.5.2 Slot 1



### 2.5.3 Slot 2



## A Summary

### A.1 Status

V&V Scientist	Jen Lauer
V&V Date (YYYY-MM-DD)	2012.04.10
V&V Edition	1
V&V Disposition and Status	OK
V&V Charge Time	10.068800077438

### A.2 Comments