

V&V Reference Report

L2 ASCDS Version : 8.4.5

Observation 14262 - L2 Version 1
Chandra X-Ray Center

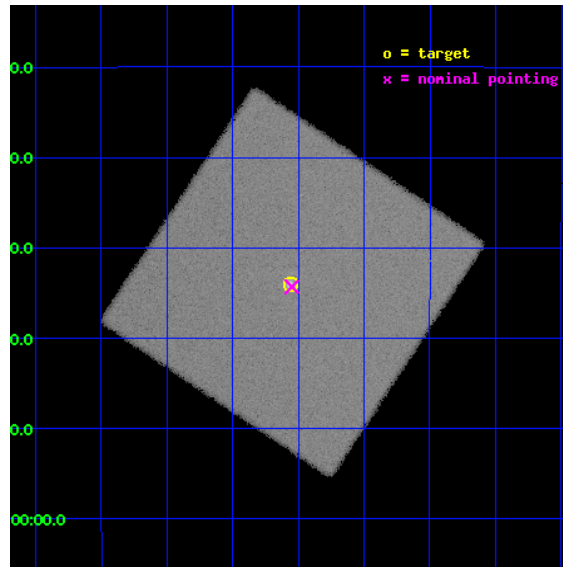
L2 Processing Date : Aug 11 2012

Contents

1	Front	2
2	OBI	3
2.1	OBI	3
2.1.1	Images	3
2.1.2	Parameters	4
2.1.3	Events	4
2.2	Compared Parameters	5
2.3	Aspect	6
2.4	Star Slots	9
2.4.1	Slot 3	9
2.4.2	Slot 4	10
2.4.3	Slot 5	11
2.4.4	Slot 6	12
2.4.5	Slot 7	13
2.5	FID Slots	14
2.5.1	Slot 0	14
2.5.2	Slot 1	15
2.5.3	Slot 2	16
A	Summary	17
A.1	Status	17
A.2	Comments	17

1 Front

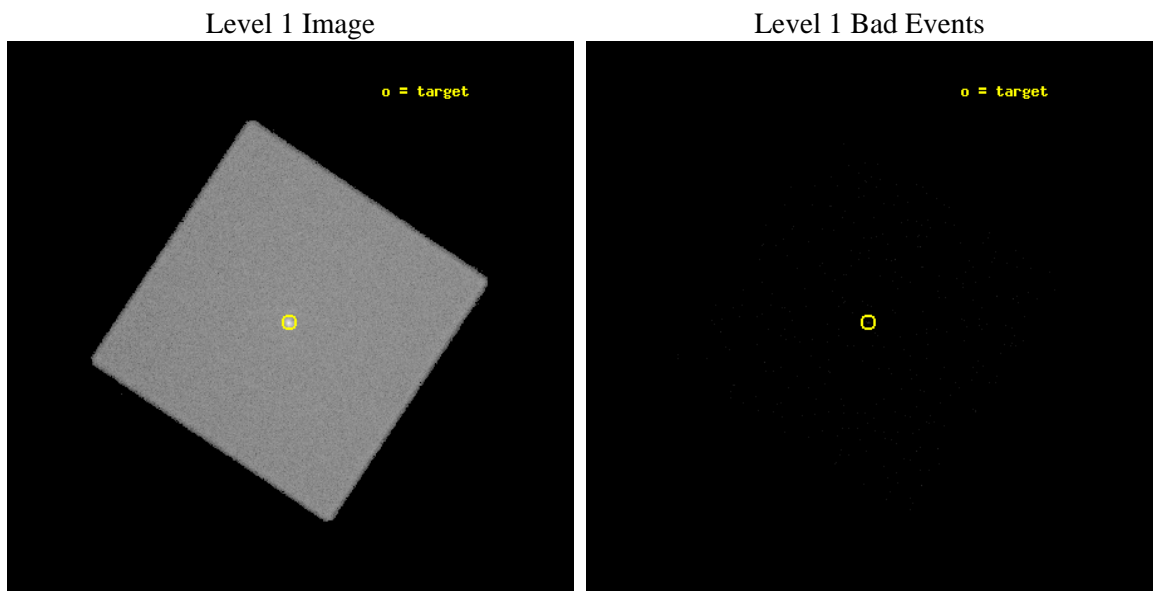
seq_num	590515	Sequence number
obs_id	14262	Observation id
title	AO-13 HRC-I Calibration Observation of G21.5-09	Proposal title
observer	Dr. CXC Calibration	Principal investigator
object	G21.5-09	Source name
ra_targ	278.389583	Observer's specified target RA [deg]
dec_targ	-10.568528	Observer's specified target Dec [deg]
ra_nom	278.38721715739	Nominal RA [deg]
dec_nom	-10.572216799774	Nominal Dec [deg]
roll_nom	258.72958981585	Nominal Roll [deg]
revision	1	Processing version of data
ontime	10098.556789875	[s]
livetime	10019.211382724	Ontime multiplied by DTCOR
l2events	586961	Number of level 2 events



2 OBI

2.1 OBI

2.1.1 Images



2.1.2 Parameters

obi_num	1	Obi number	sched_exp_time	10000.000000	[s] Scheduled observation exposure time
ascdsver	8.4.5	Processing system revision	ontime	10098.556789875	[s]
caldsver	4.5.1.1	 	l1events	811398	Number of level 1 events
date	2012-08-11T17:04:53	Date and time of file creation			
revision	1	Processing version of data			

2.1.3 Events

Level 1 Events

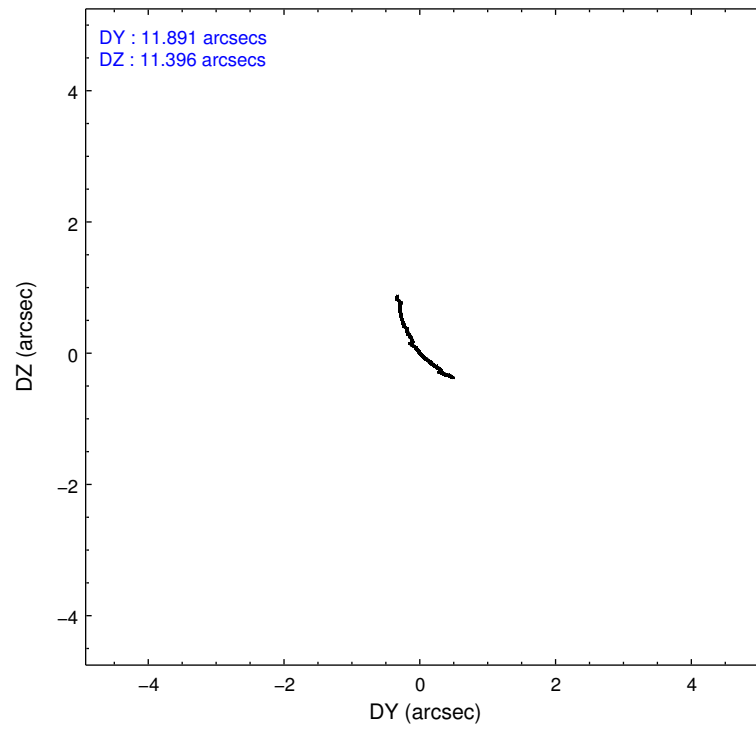
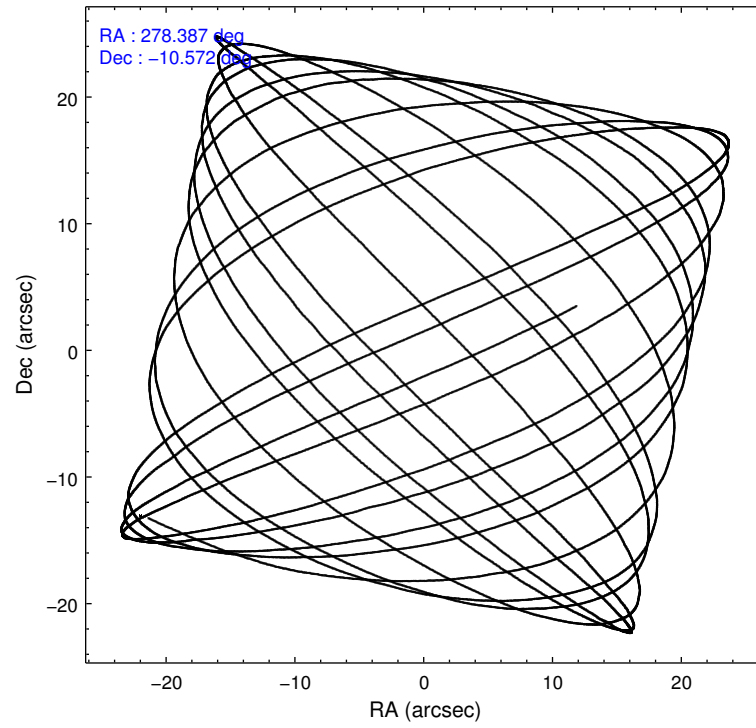
	segment 0
level 1 events	811398
rejected events	6102
rejected %	0%

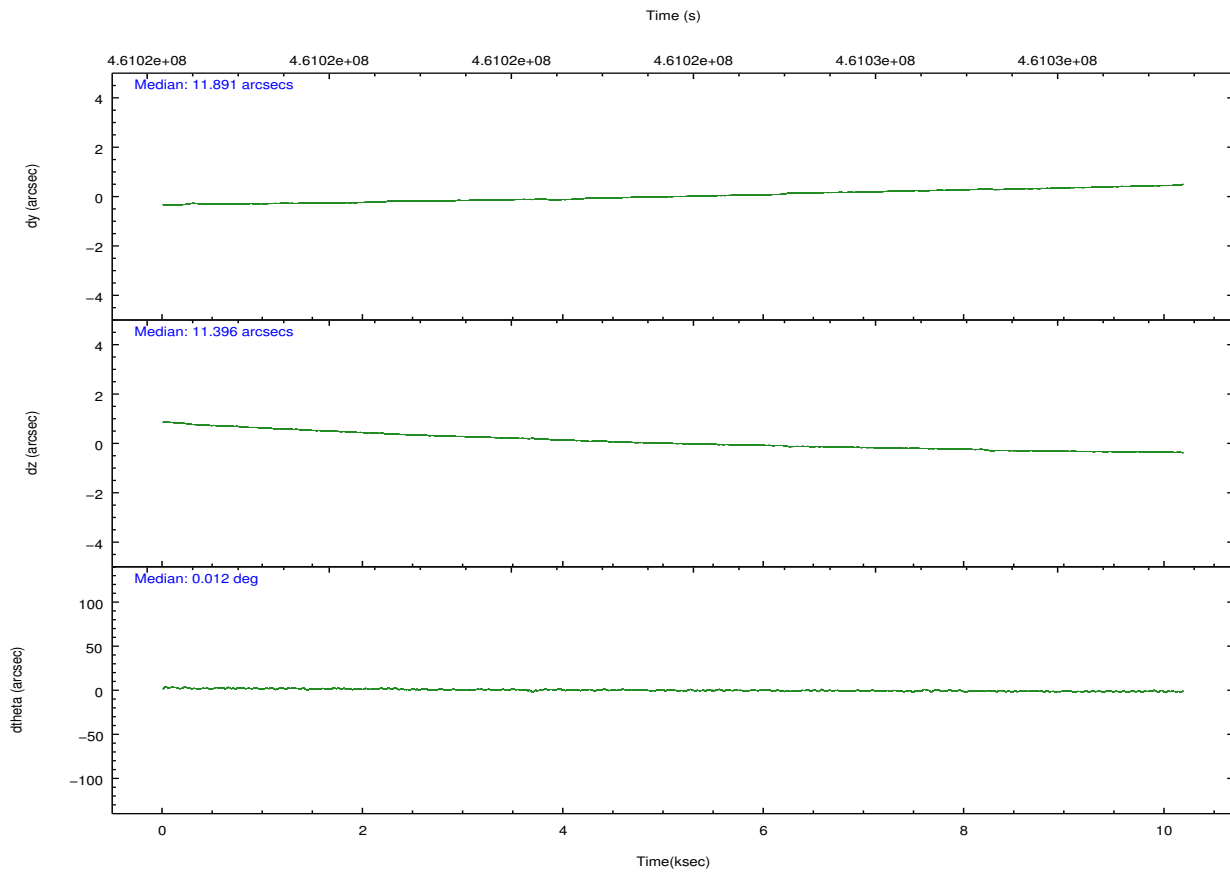
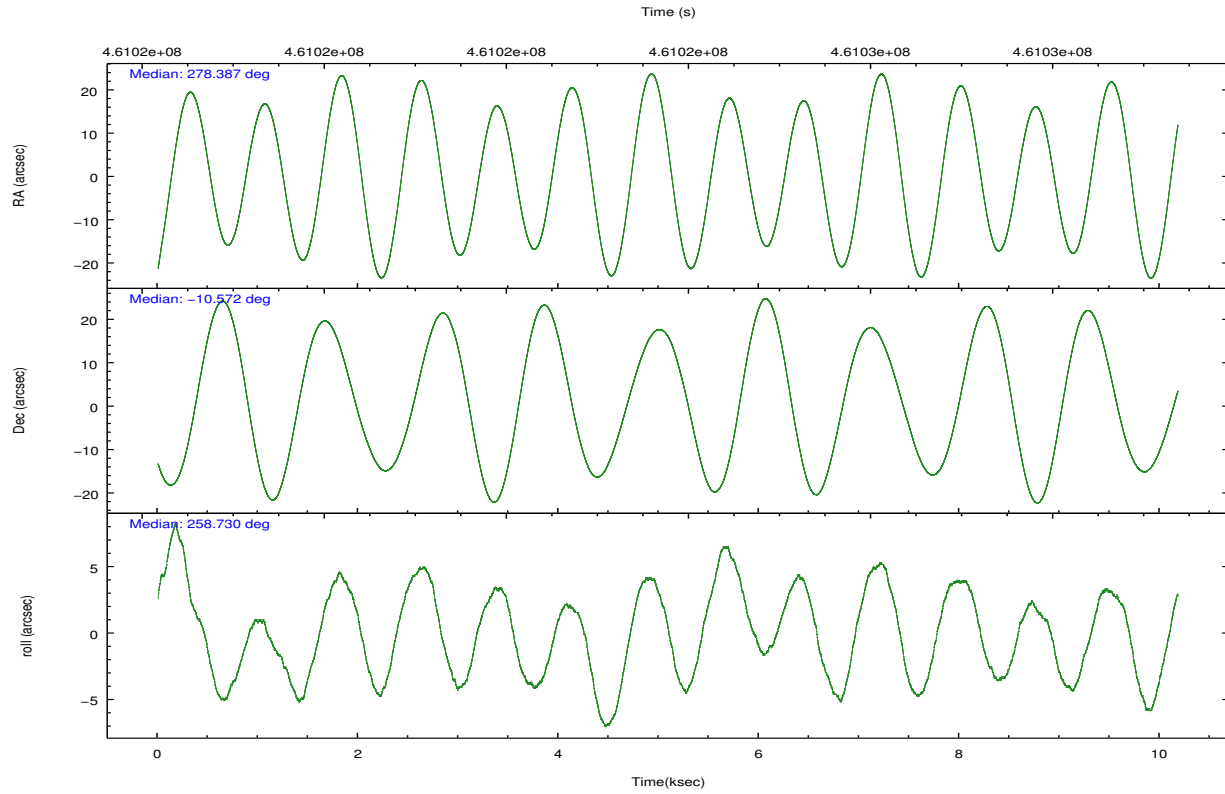
2.2 Compared Parameters

Parameter	Planned	Actual
Instrument	HRC	HRC
Detector	HRC-I	HRC-I
Grating	NONE	NONE
Data mode	OBSERVING	OBSERVING
Observation mode	POINTING	POINTING
[deg] Pointing RA	278.377759	278.3872171573877
[deg] Pointing Dec	-10.546529	-10.57221679977356
[deg] Pointing Roll	258.823346	258.7295898158549
[mm] SIM focus pos	-1.040293	-1.038866356238299
[mm] SIM defocus	0	0.001426264420575141
[mm] SIM translation stage pos	126.985494	126.9829799899862
[mm] SIM translation stage offset	0	0.002508901615314585
[s] Observation start time (MET)	461018878.184000	461018436.70227
Observation start date	2012-08-10T20:46:51	2012-08-10T20:40:36
[s] Observation end time (MET)	461028878.184000	461029711.70287
Observation end date	2012-08-10T23:33:31	2012-08-10T23:48:31

Parameter	Planned	Actual
Obspar format version number	7	7
Obspar file type	PREDICTED	ACTUAL
Obspar update status	NONE	UPDATED

2.3 Aspect



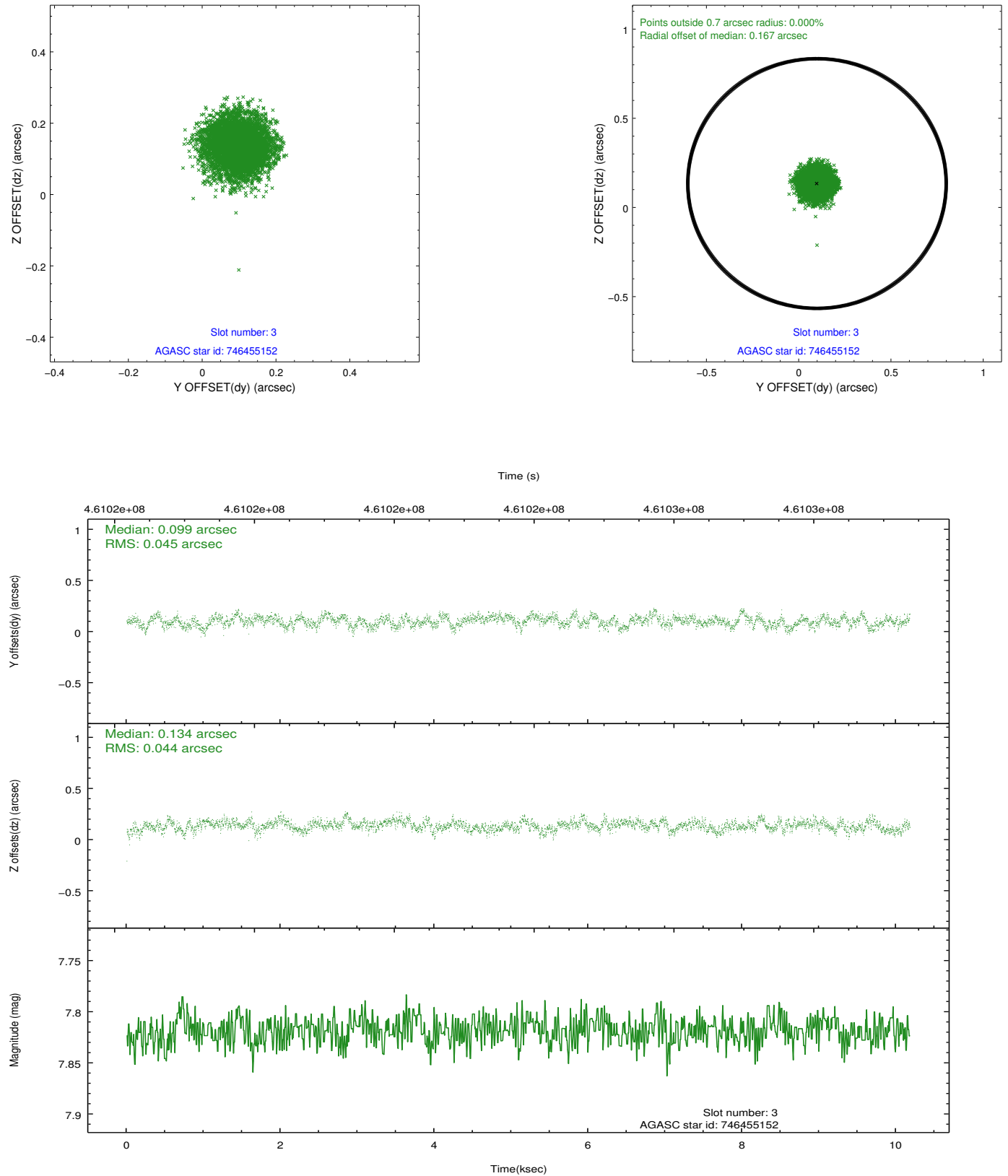


Slot Statistics

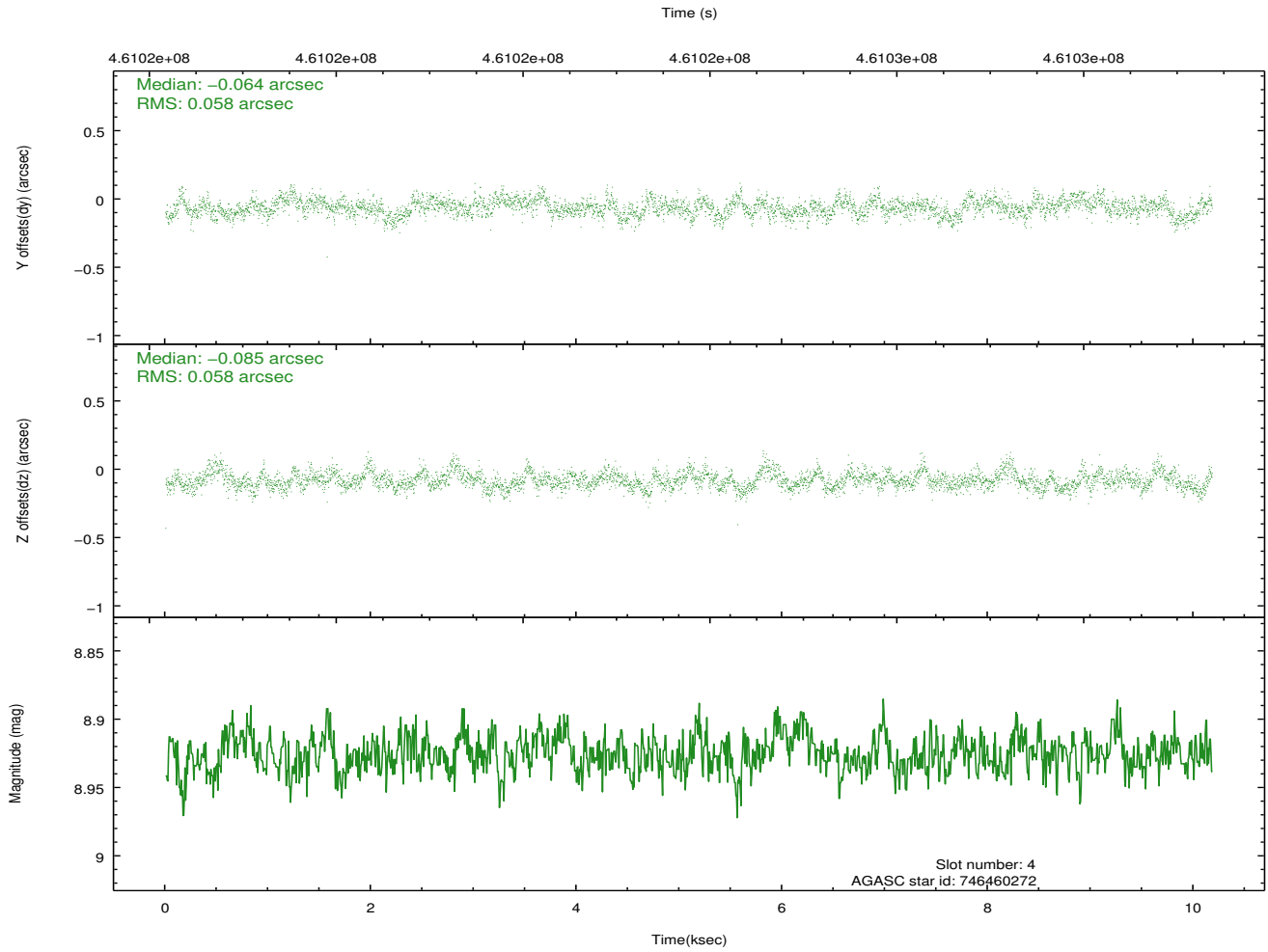
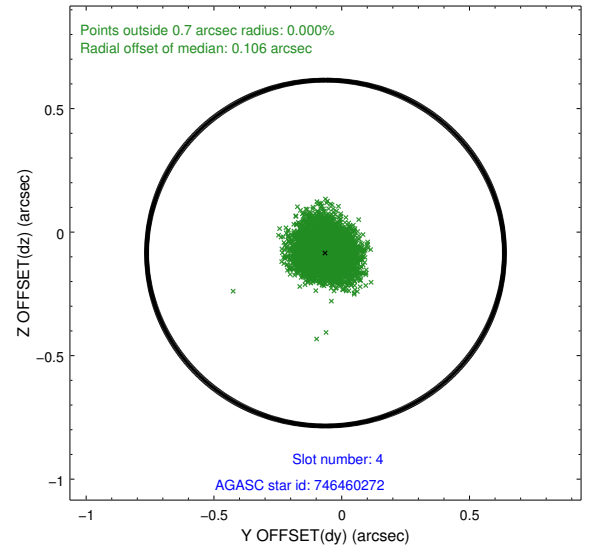
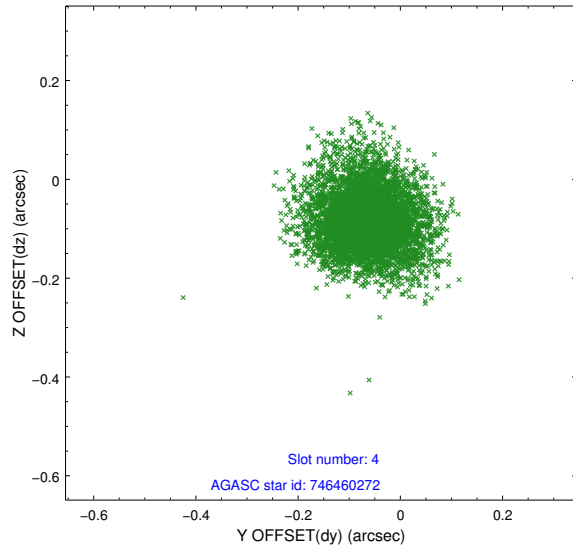
slot	status	id	mag	n_pts	med_dy	med_dz	dr1	dr2	ra	dec	mean_y	mean_z
0	FID	HRC-I-1	7.05	2483	-0.031	-0.093	0.015	0.026	0.000000	0.000000	-767.76	-1299.49
1	FID	HRC-I-3	7.13	2483	-0.135	-0.040	0.009	0.019	0.000000	0.000000	-1196.50	1004.63
2	FID	HRC-I-4	7.06	2483	0.279	0.044	0.020	0.031	0.000000	0.000000	1275.02	1003.07
3	GUIDE	746455152	7.82	4966	0.099	0.134	0.068	0.108	278.447893	-9.976732	-2060.84	-153.43
4	GUIDE	746460272	8.93	4961	-0.064	-0.085	0.087	0.143	278.847488	-10.152127	-1715.25	1358.01
5	GUIDE	746461728	9.76	4950	0.003	-0.016	0.156	0.252	278.986921	-10.530755	-472.34	2104.91
6	GUIDE	746462456	8.39	4964	0.128	0.015	0.080	0.129	278.652171	-10.530173	-244.38	942.71
7	GUIDE	746462680	9.00	4964	-0.161	-0.049	0.081	0.135	278.660755	-10.782756	640.14	1146.98

2.4 Star Slots

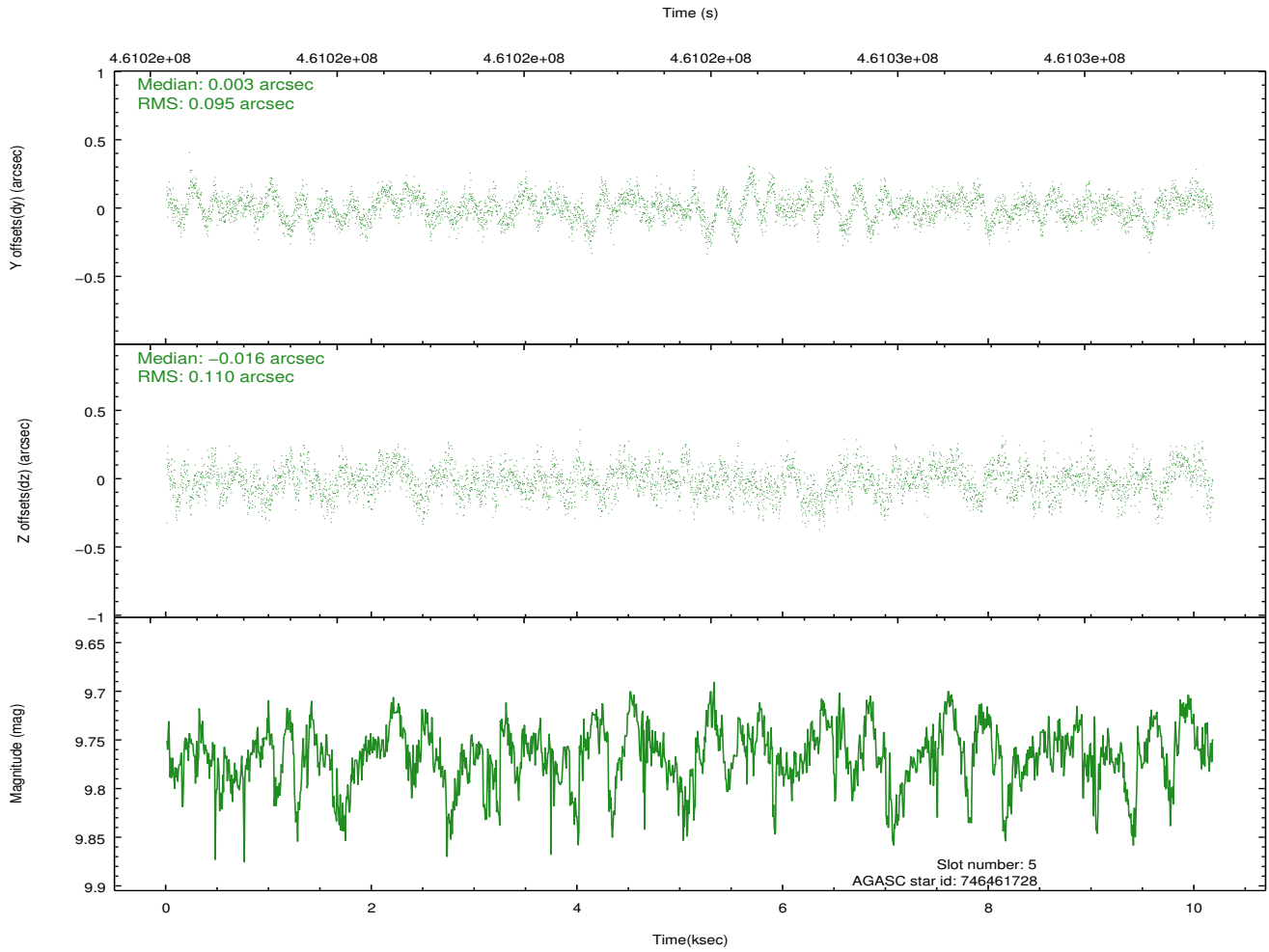
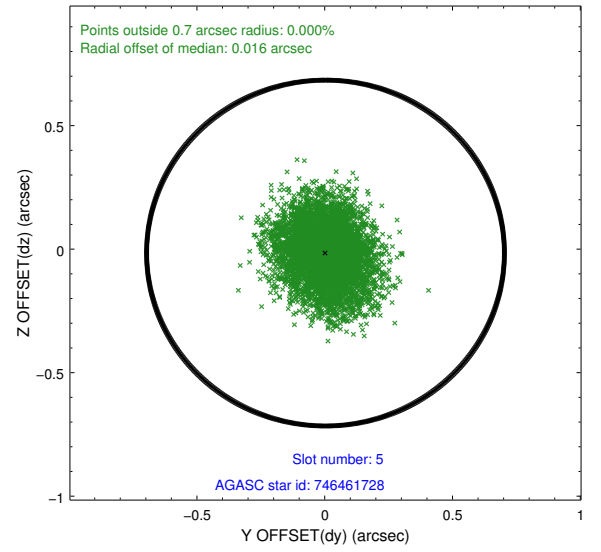
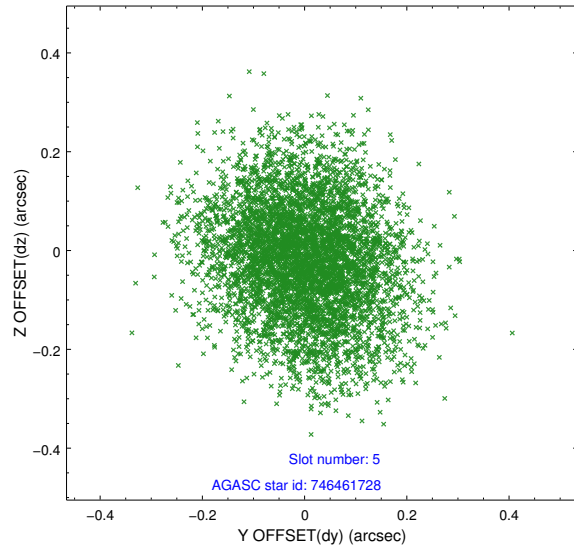
2.4.1 Slot 3



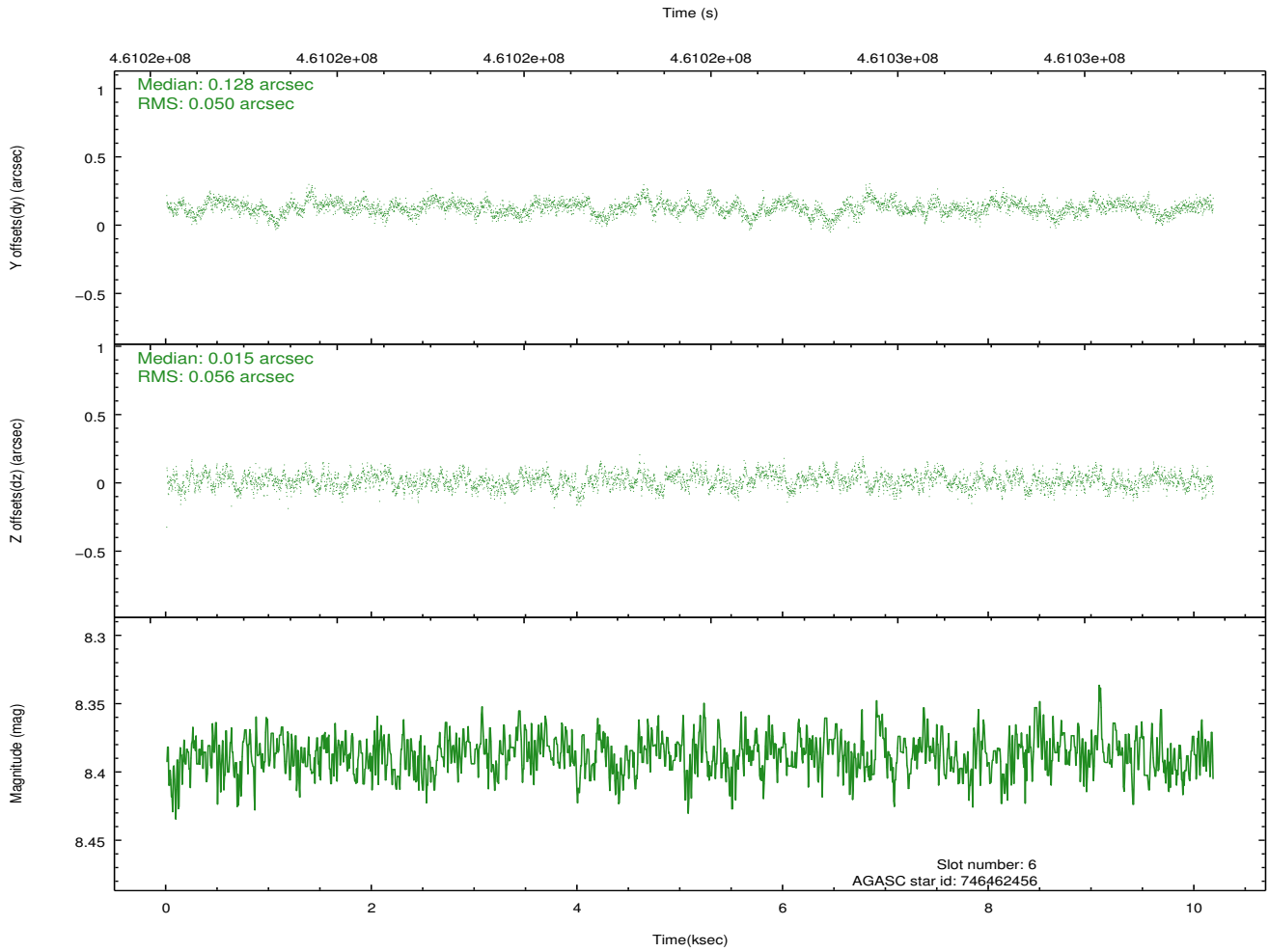
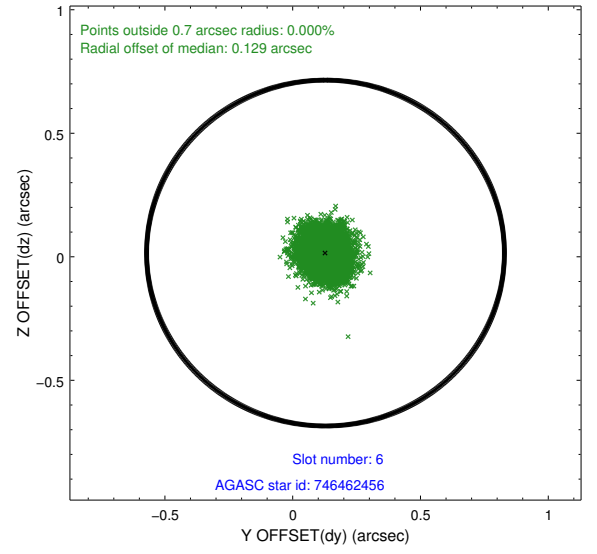
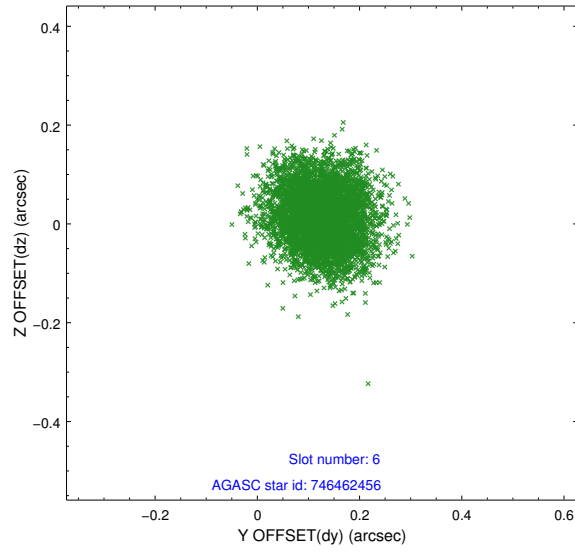
2.4.2 Slot 4



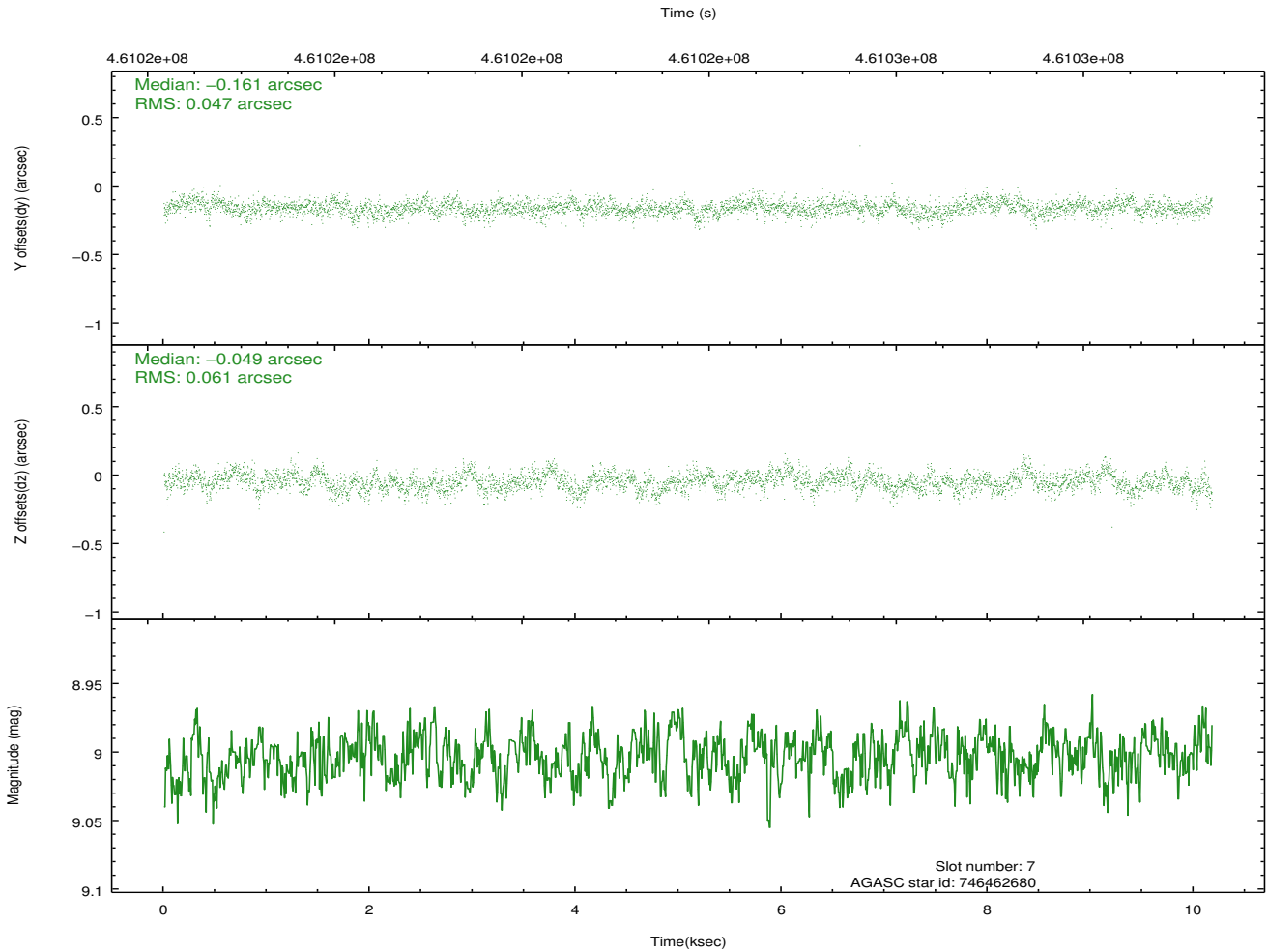
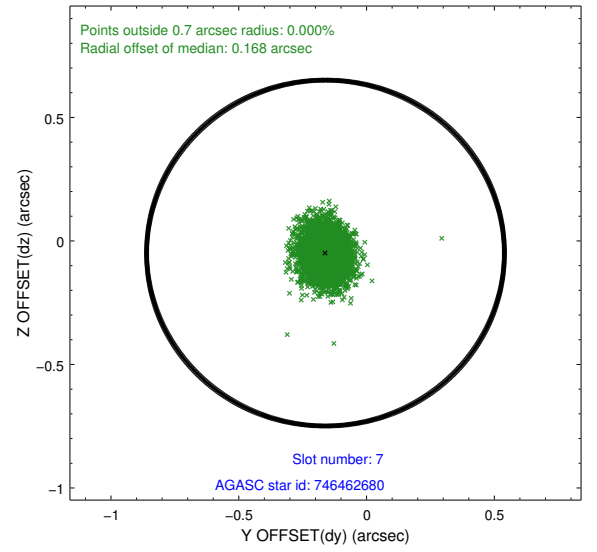
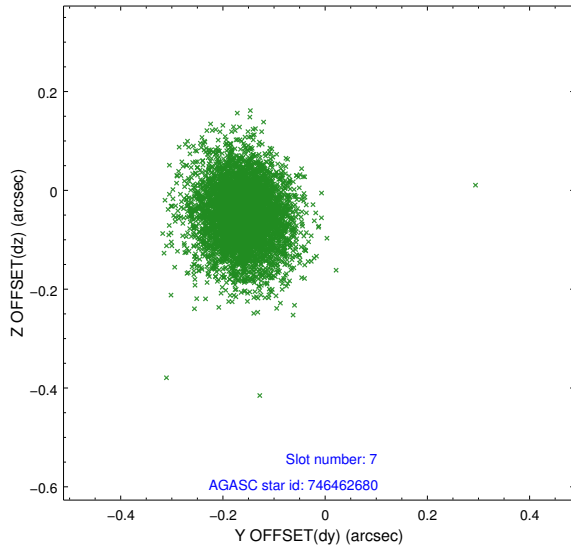
2.4.3 Slot 5



2.4.4 Slot 6

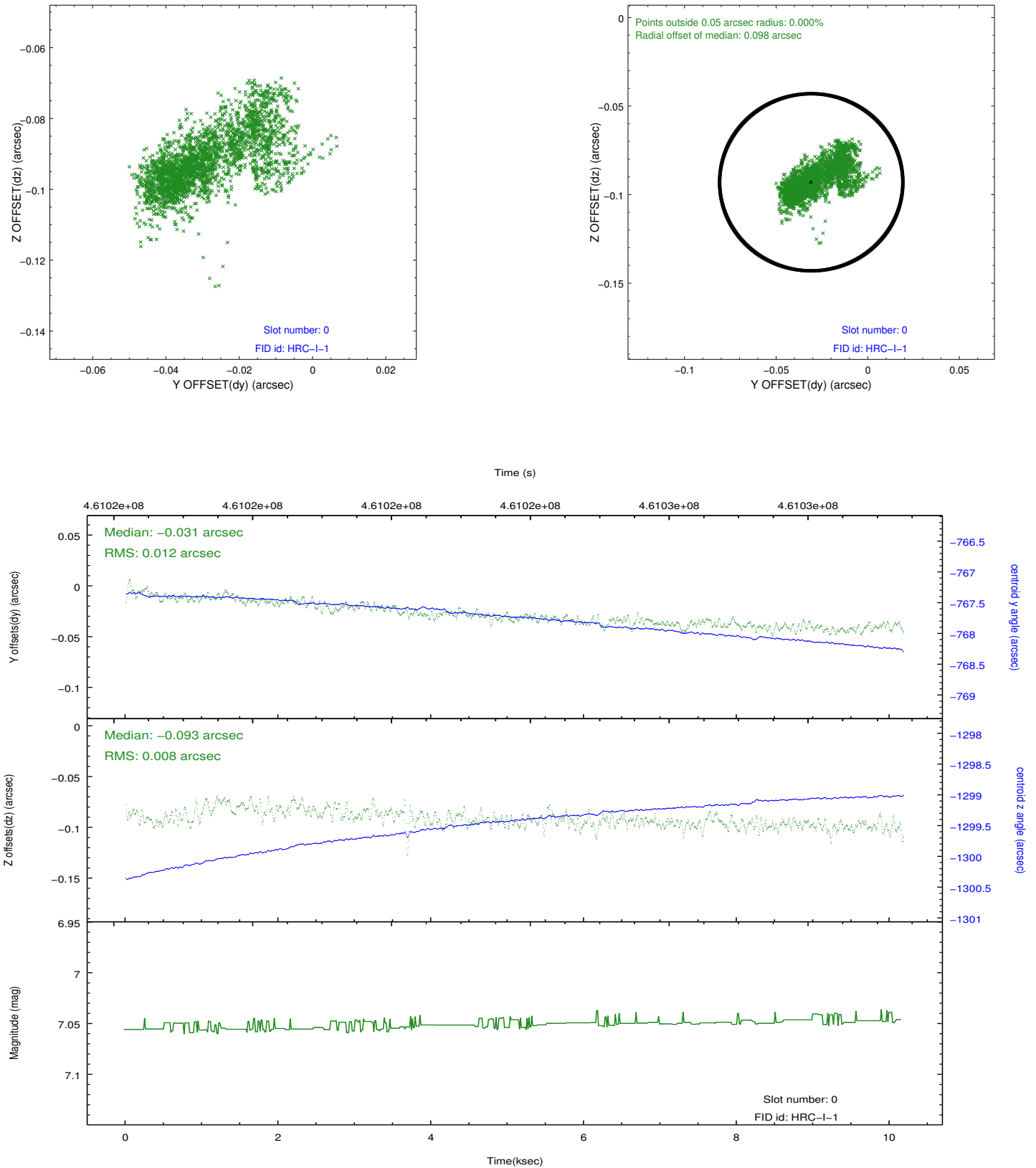


2.4.5 Slot 7

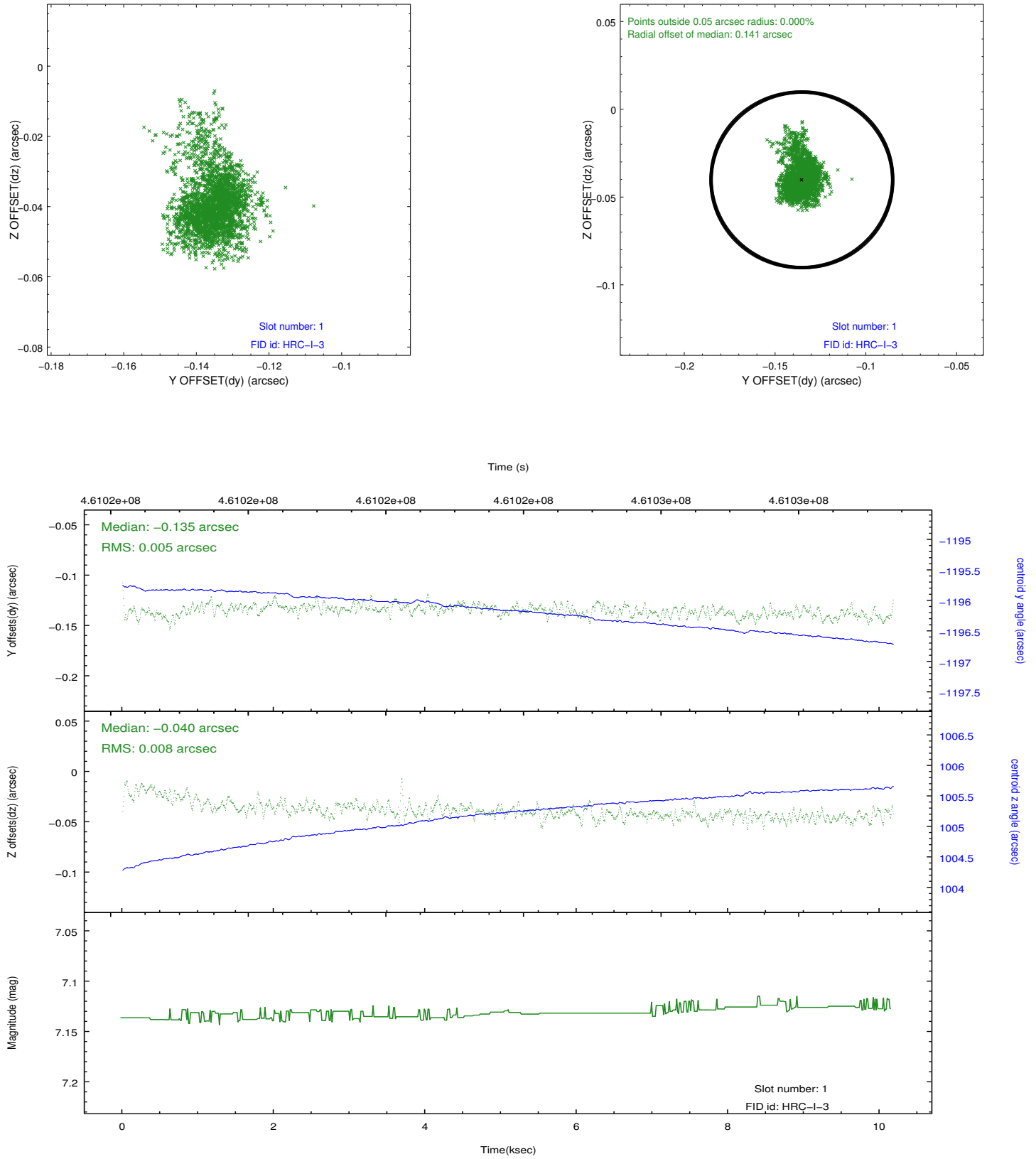


2.5 FID Slots

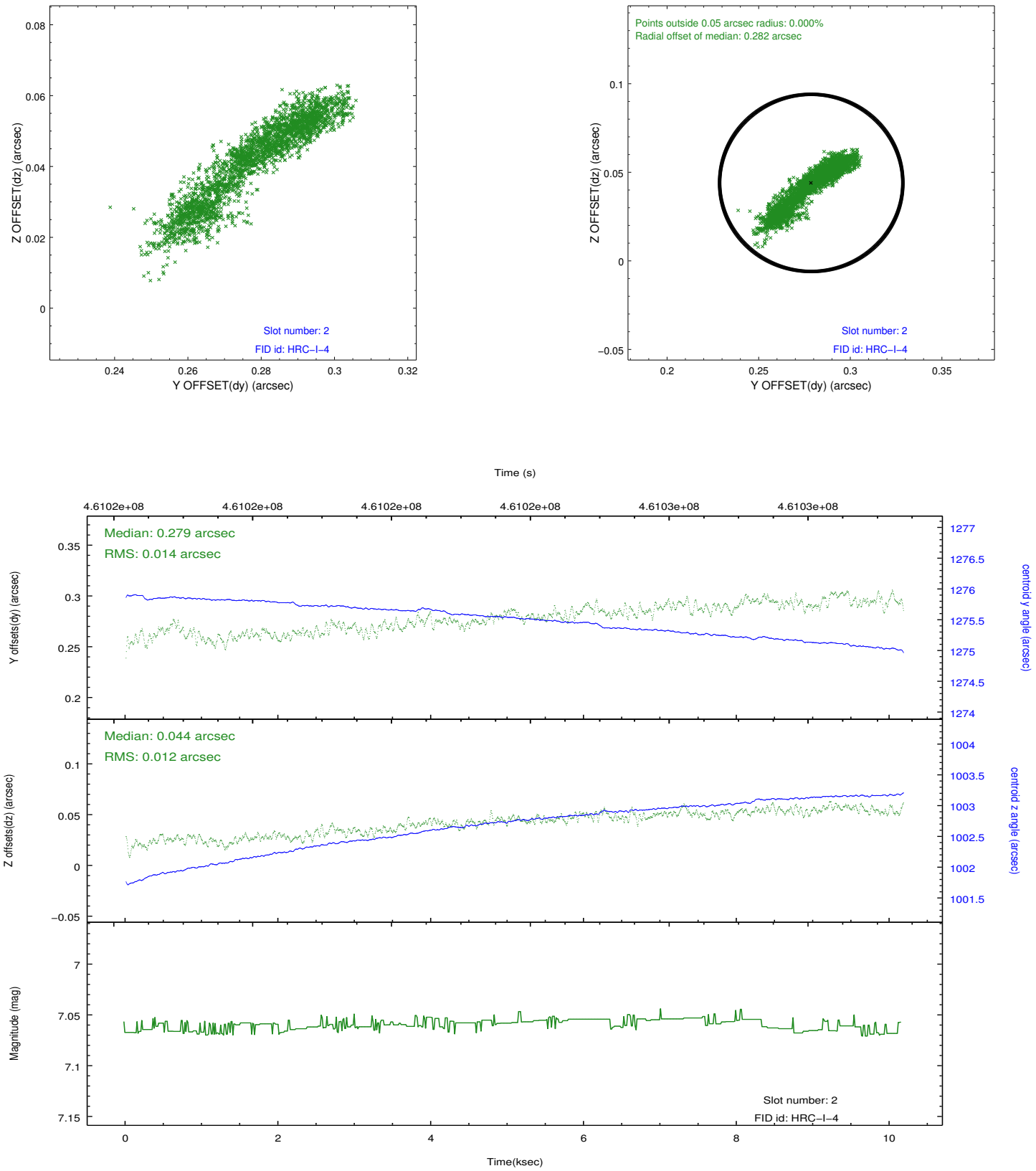
2.5.1 Slot 0



2.5.2 Slot 1



2.5.3 Slot 2



A Summary

A.1 Status

V&V Scientist	Jen Lauer
V&V Date (YYYY-MM-DD)	2012.08.12
V&V Edition	1
V&V Disposition and Status	OK
V&V Charge Time	10.098556789875

A.2 Comments