

V&V Reference Report

L2 ASCDS Version : 8.4.3

Observation 13091 - L2 Version 3
Chandra X-Ray Center

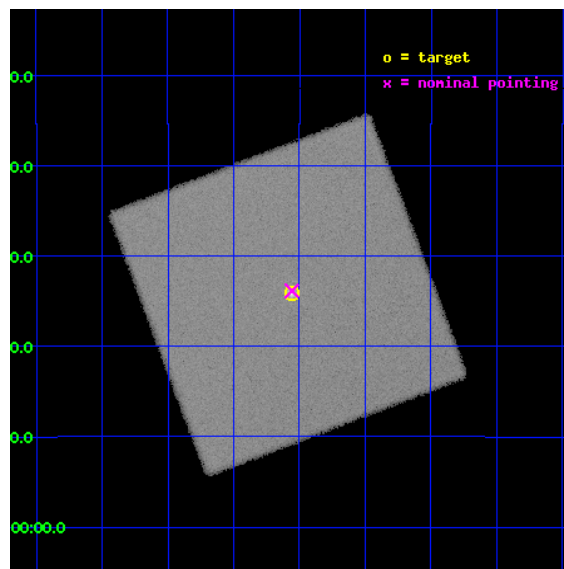
L2 Processing Date : Jul 27 2012

Contents

1	Front	2
2	OBI	3
2.1	OBI	3
2.1.1	Images	3
2.1.2	Parameters	4
2.1.3	Events	4
2.2	Compared Parameters	5
2.3	Aspect	6
2.4	Star Slots	9
2.4.1	Slot 3	9
2.4.2	Slot 4	10
2.4.3	Slot 5	11
2.4.4	Slot 6	12
2.4.5	Slot 7	13
2.5	FID Slots	14
2.5.1	Slot 0	14
2.5.2	Slot 1	15
2.5.3	Slot 2	16
A	Summary	17
A.1	Status	17
A.2	Comments	17

1 Front

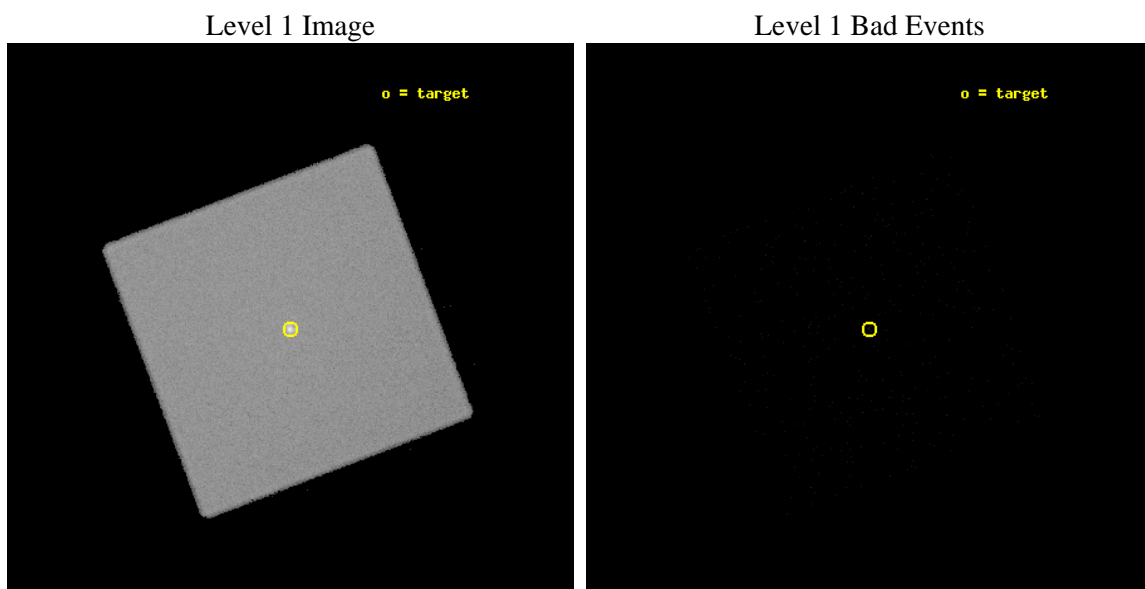
seq_num	590504	Sequence number
obs_id	13091	Observation id
title	AO-12 HRC-I Calibration Observation of G21.5-09	Proposal title
observer	Dr. CXC Calibration	Principal investigator
object	G21.5-09	Source name
ra_targ	278.389583	Observer's specified target RA [deg]
dec_targ	-10.568528	Observer's specified target Dec [deg]
ra_nom	278.38930535336	Nominal RA [deg]
dec_nom	-10.564174437134	Nominal Dec [deg]
roll_nom	114.26218284855	Nominal Roll [deg]
revision	3	Processing version of data
ontime	10146.475527346	[s]
livetime	10048.353673144	Ontime multiplied by DTCOR
l2events	692807	Number of level 2 events



2 OBI

2.1 OBI

2.1.1 Images



2.1.2 Parameters

obi_num	0	Obi number	sched_exp_time	10000.000000	[s] Scheduled observation exposure time
ascdsver	8.4.5	Processing system revision	ontime	10146.475527346	[s]
caldbver	4.5.1	 	l1events	1042305	Number of level 1 events
date	2012-07-27T23:18:36	Date and time of file creation			
revision	3	Processing version of data			

2.1.3 Events

Level 1 Events

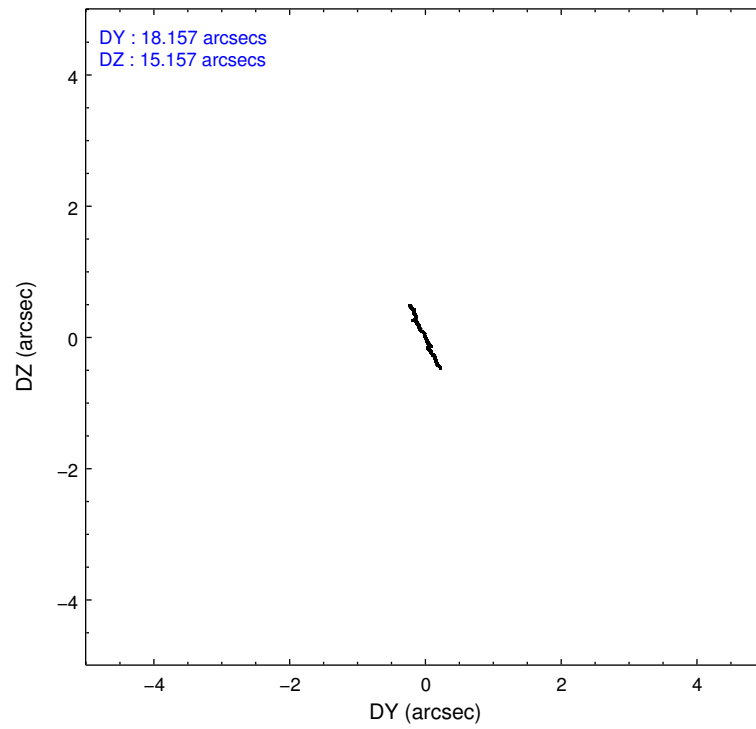
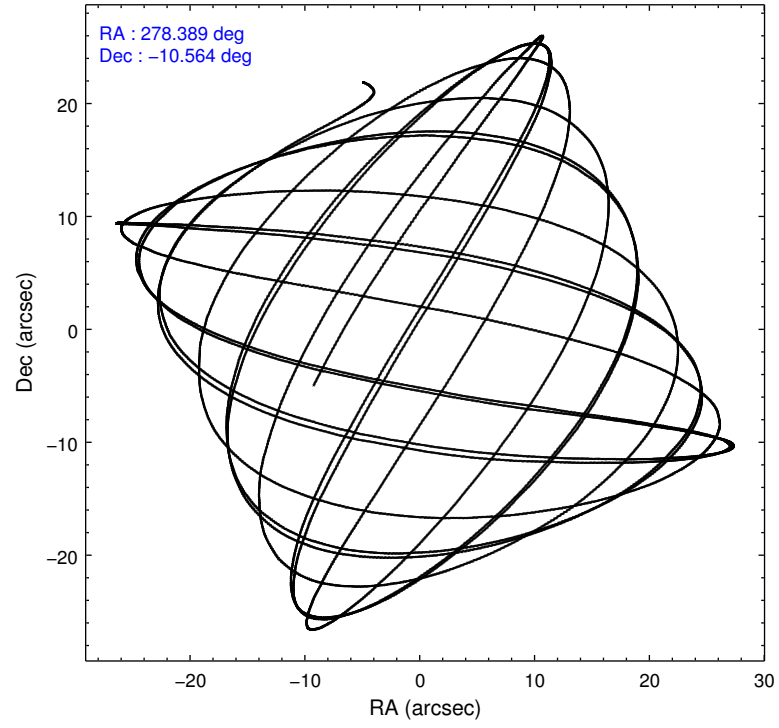
	segment 0
level 1 events	1042305
rejected events	78652
rejected %	7%

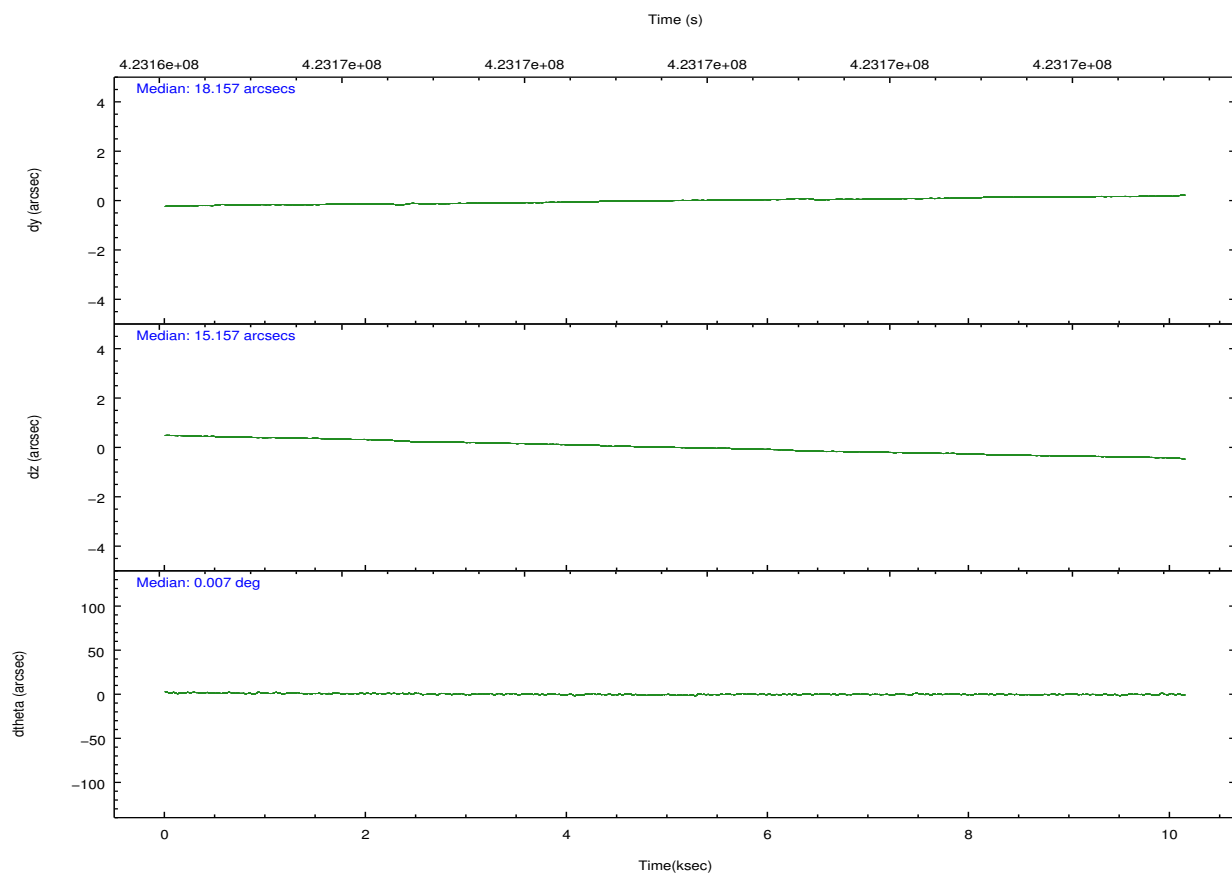
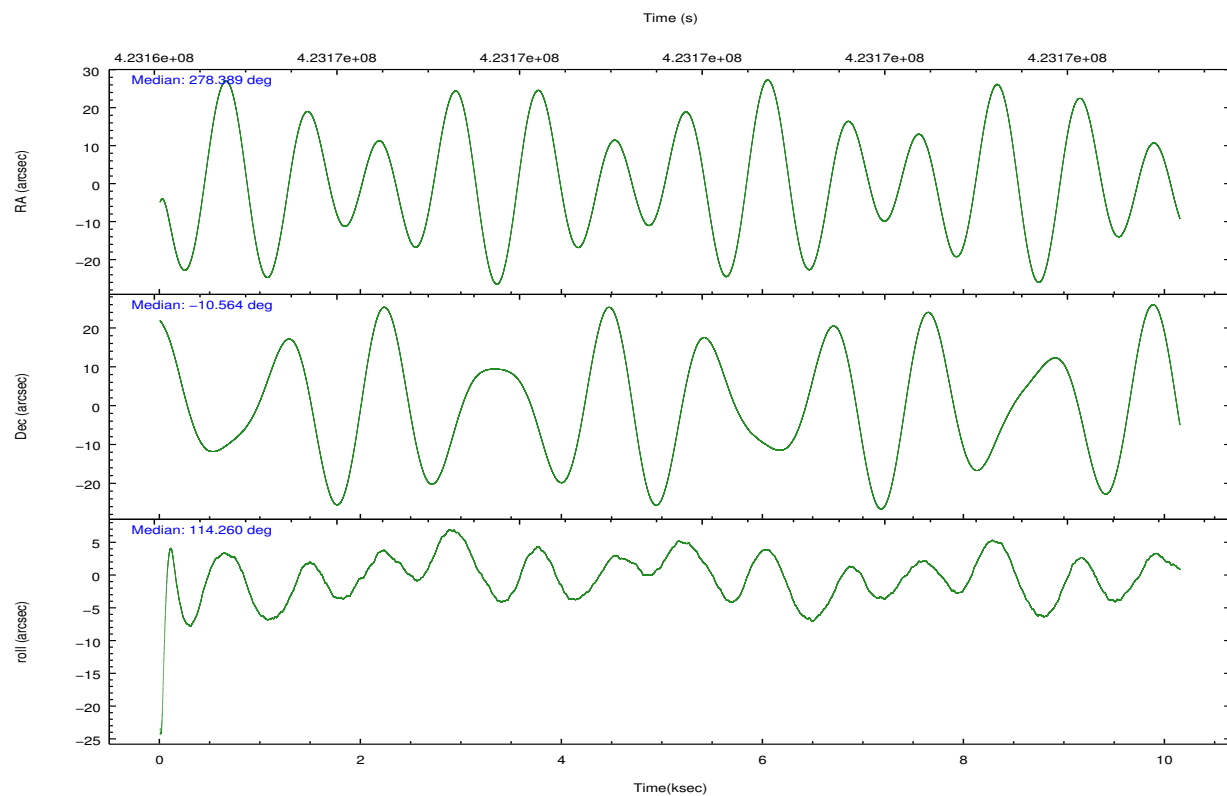
2.2 Compared Parameters

Parameter	Planned	Actual
Instrument	HRC	HRC
Detector	HRC-I	HRC-I
Grating	NONE	NONE
Data mode	OBSERVING	OBSERVING
Observation mode	POINTING	POINTING
[deg] Pointing RA	278.412208	278.3893053533596
[deg] Pointing Dec	-10.579678	-10.56417443713405
[deg] Pointing Roll	114.361921	114.2621828485486
[mm] SIM focus pos	-1.040293	-1.038866356238299
[mm] SIM defocus	0	0.001426264420575141
[mm] SIM translation stage pos	126.985494	126.9854943052878
[mm] SIM translation stage offset	0	-5.413686238853188e-06
[s] Observation start time (MET)	423164732.184000	423163816.9179
Observation start date	2011-05-30T17:44:26	2011-05-30T17:30:16
[s] Observation end time (MET)	423174732.184000	423175631.06851
Observation end date	2011-05-30T20:31:06	2011-05-30T20:47:11

Parameter	Planned	Actual
Obspar format version number	7	7
Obspar file type	PREDICTED	ACTUAL
Obspar update status	NONE	UPDATED

2.3 Aspect



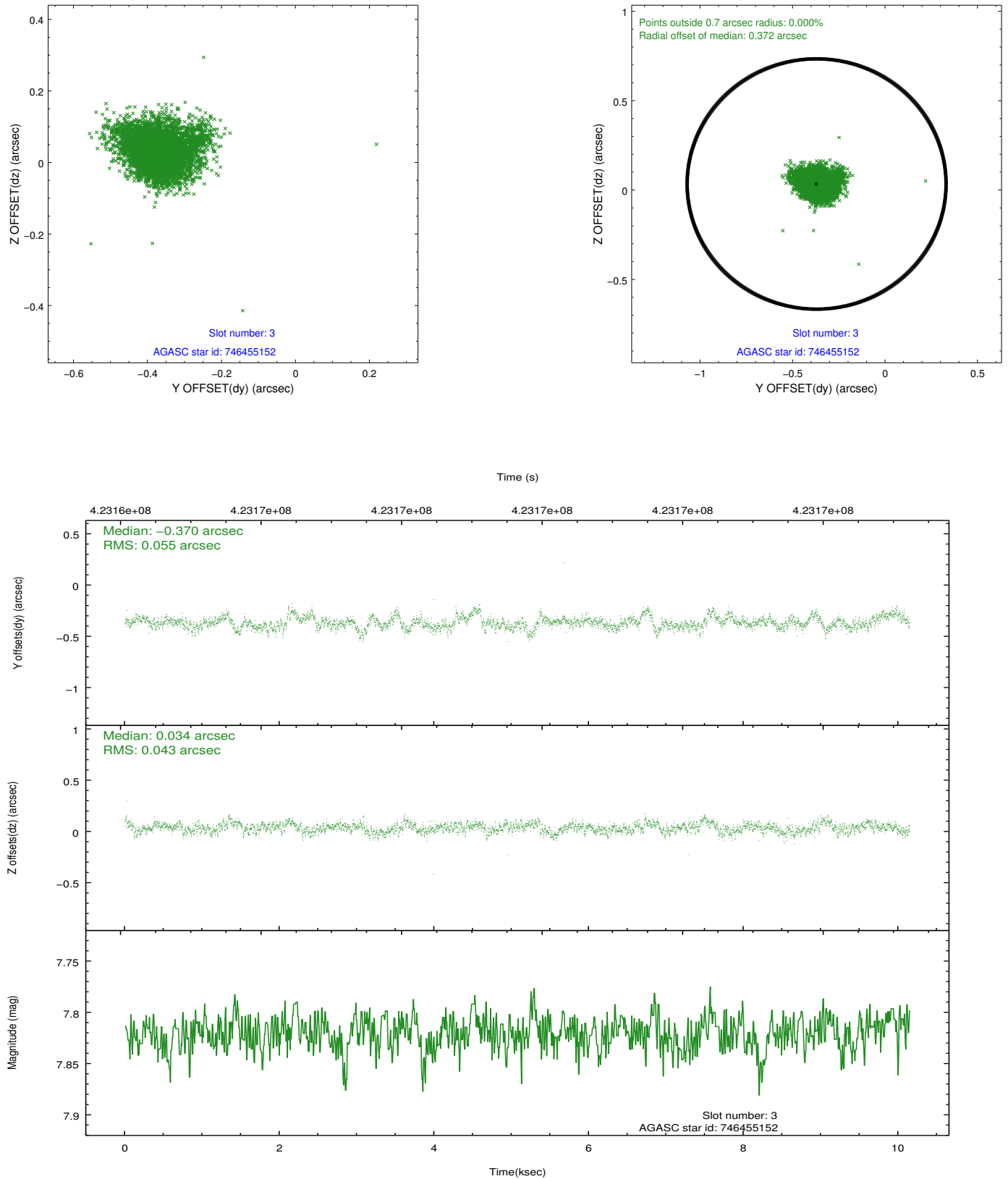


Slot Statistics

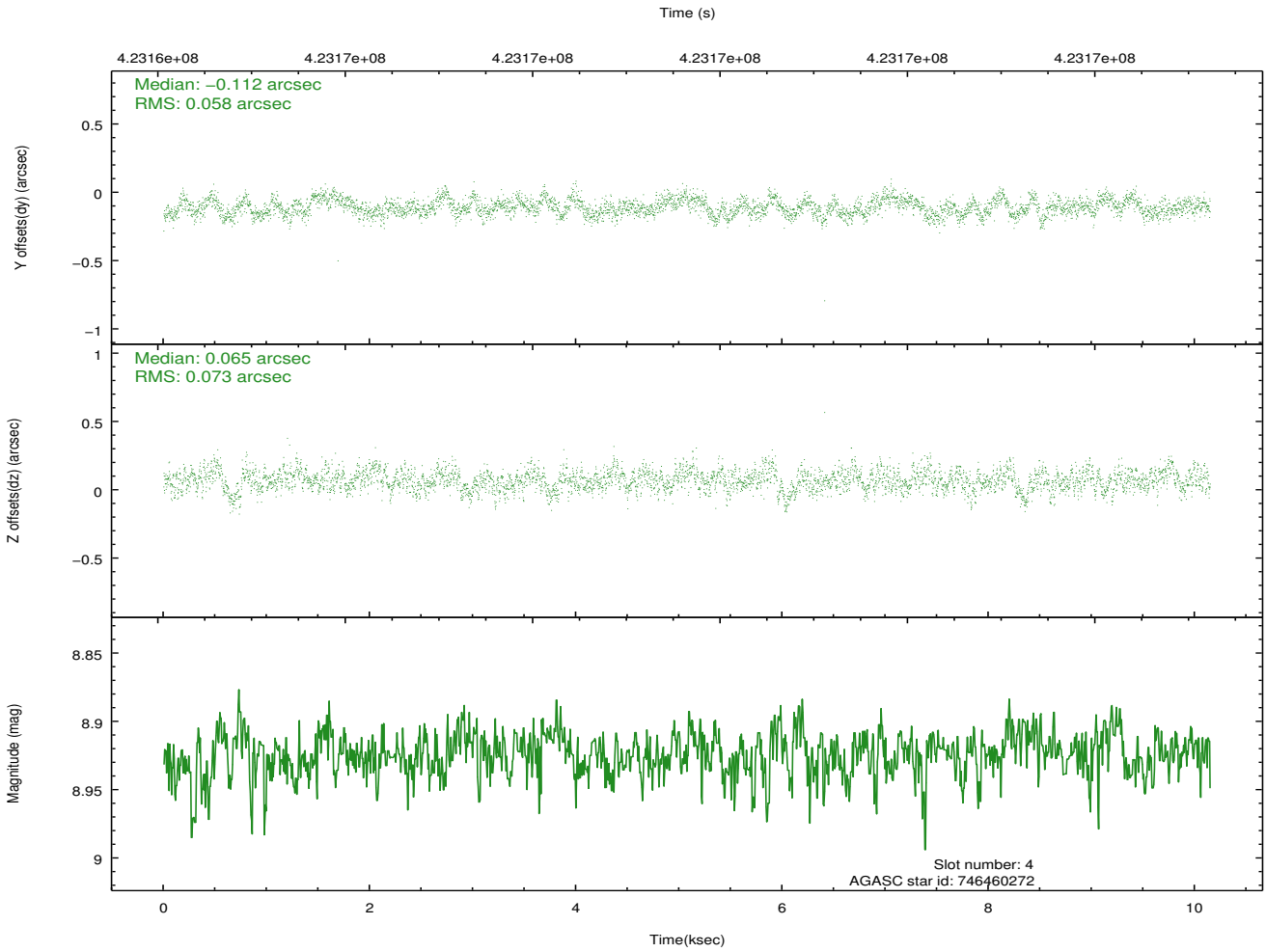
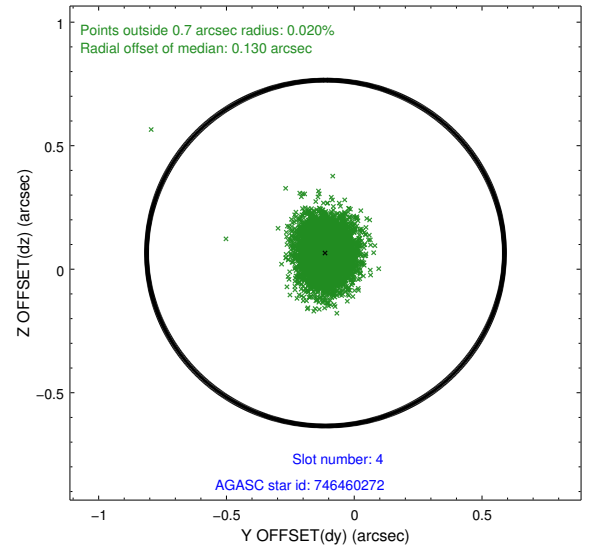
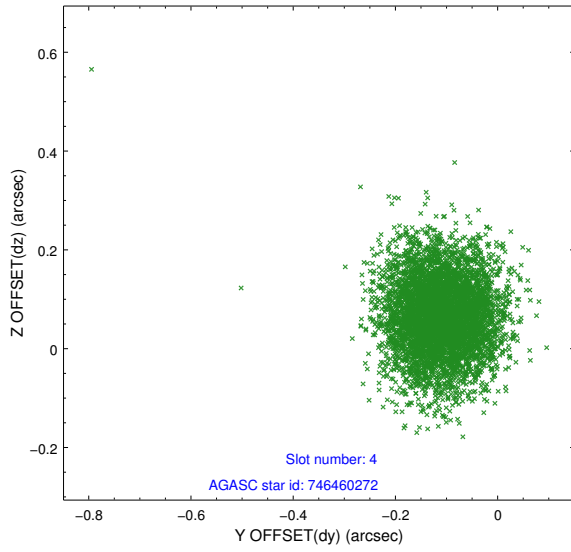
slot	status	id	mag	n_pts	med_dy	med_dz	dr1	dr2	ra	dec	mean_y	mean_z
0	FID	HRC-I-1	6.93	2475	-0.088	0.021	0.008	0.014	0.000000	0.000000	-774.07	-1303.31
1	FID	HRC-I-2	6.97	2475	0.208	-0.088	0.007	0.012	0.000000	0.000000	838.54	-1305.46
2	FID	HRC-I-3	7.01	2475	-0.002	-0.023	0.006	0.012	0.000000	0.000000	-1202.21	1000.67
3	GUIDE	746455152	7.82	4950	-0.370	0.034	0.072	0.124	278.447893	-9.976732	1924.78	-1010.31
4	GUIDE	746460272	8.92	4943	-0.112	0.065	0.097	0.160	278.847488	-10.152127	765.24	-2039.49
5	GUIDE	746462456	8.40	4948	0.165	-0.122	0.093	0.150	278.652171	-10.530173	-189.52	-847.06
6	GUIDE	746462680	9.02	4949	0.136	0.015	0.098	0.153	278.660755	-10.782756	-1028.80	-498.98
7	GUIDE	746462392	8.53	4949	0.181	0.007	0.078	0.124	279.038421	-10.890715	-1937.91	-1554.25

2.4 Star Slots

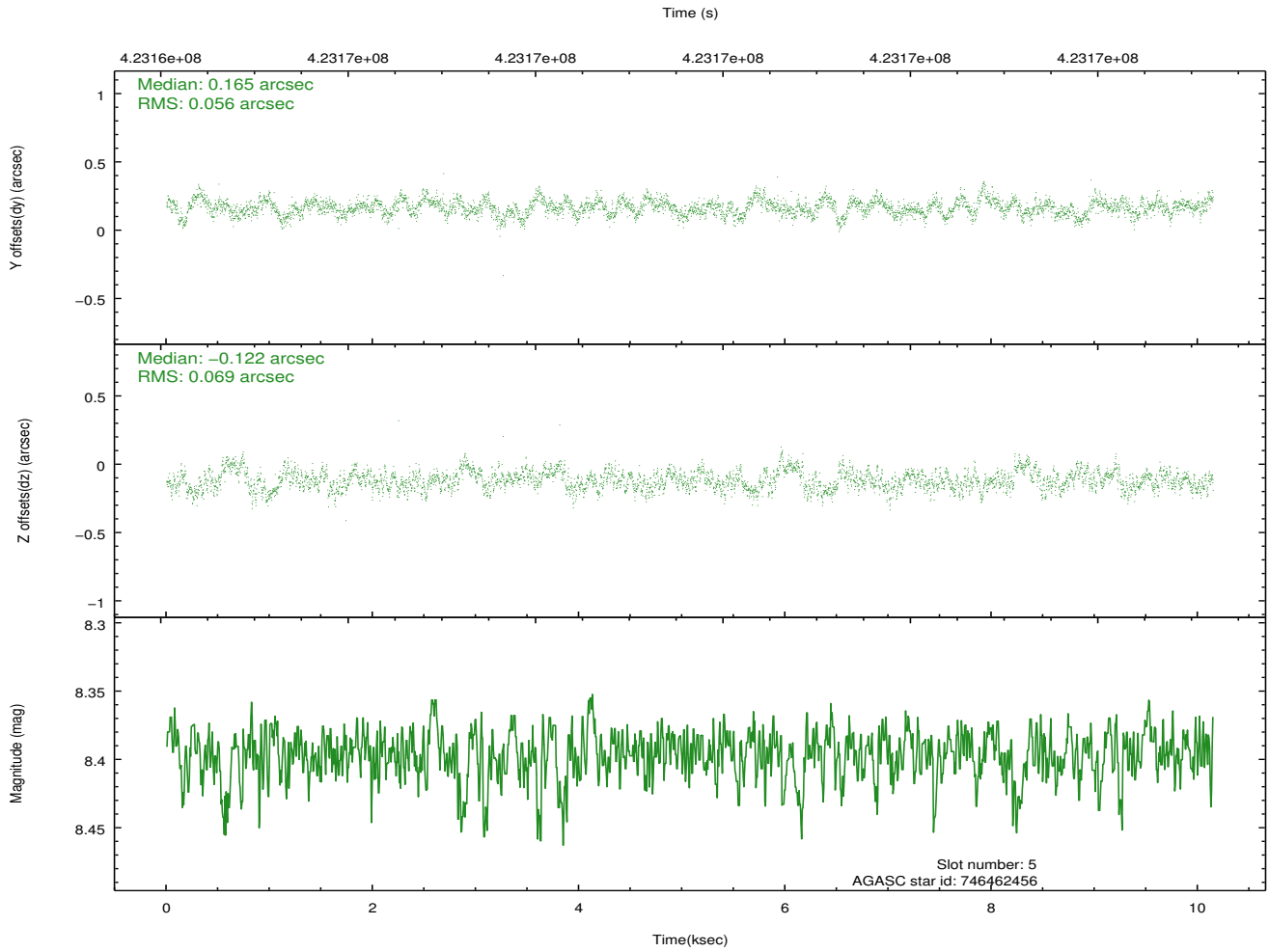
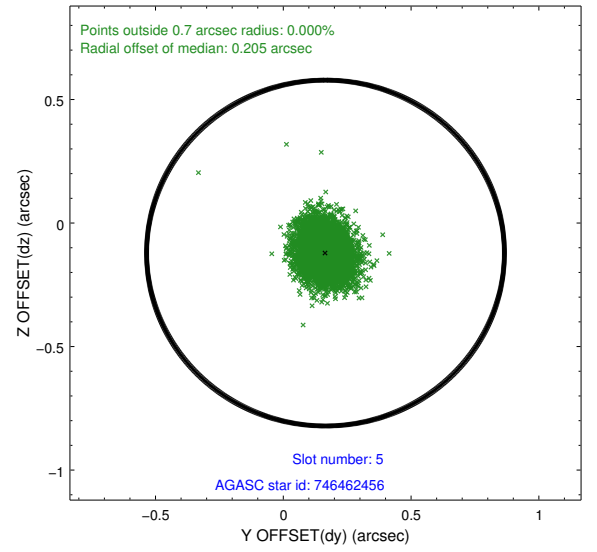
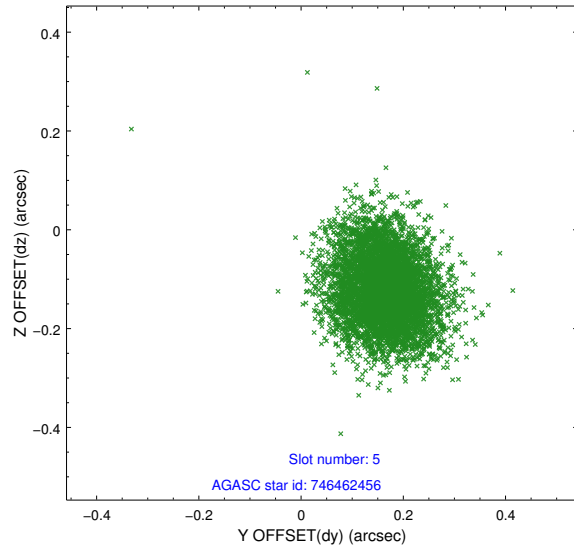
2.4.1 Slot 3



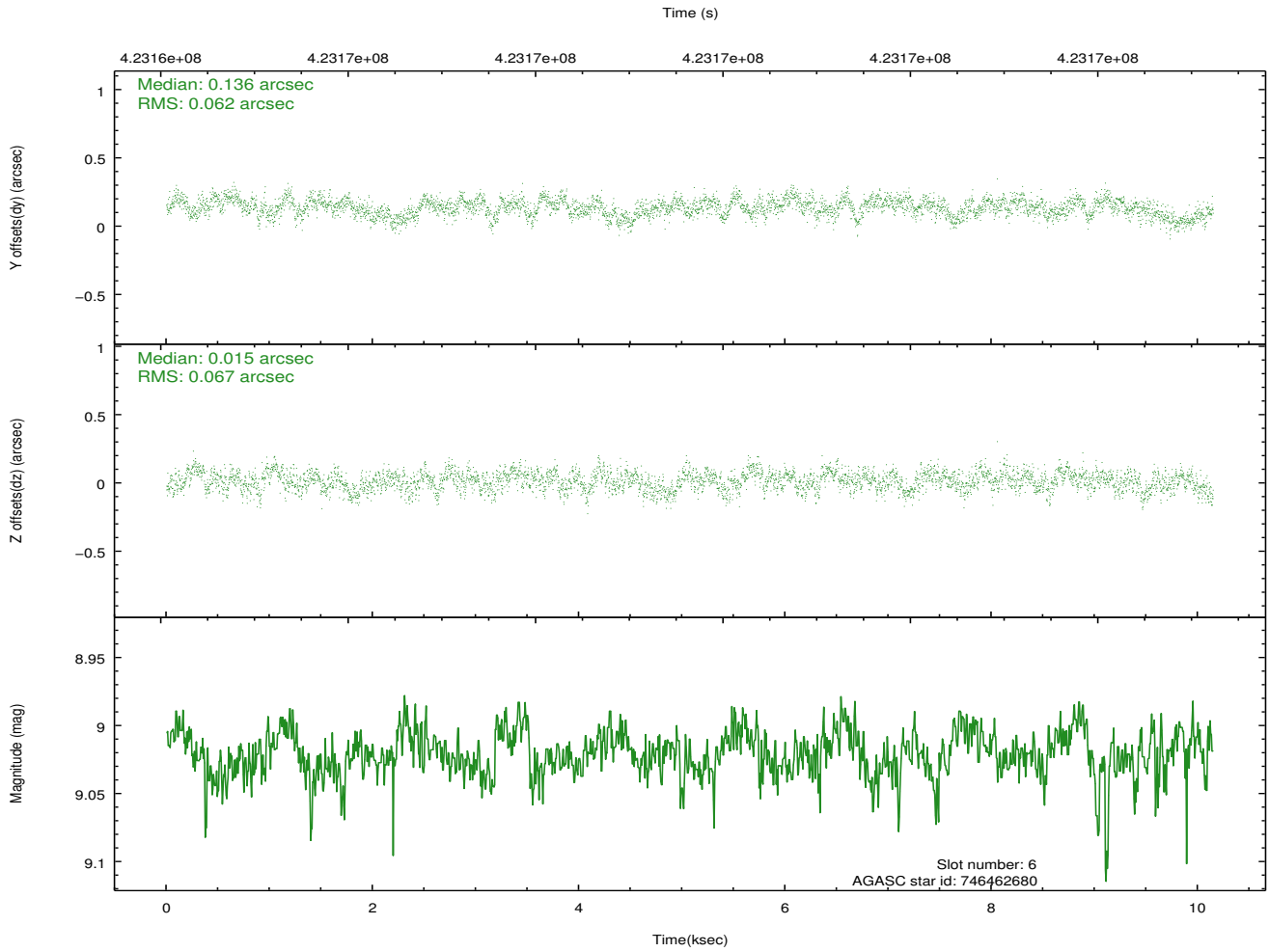
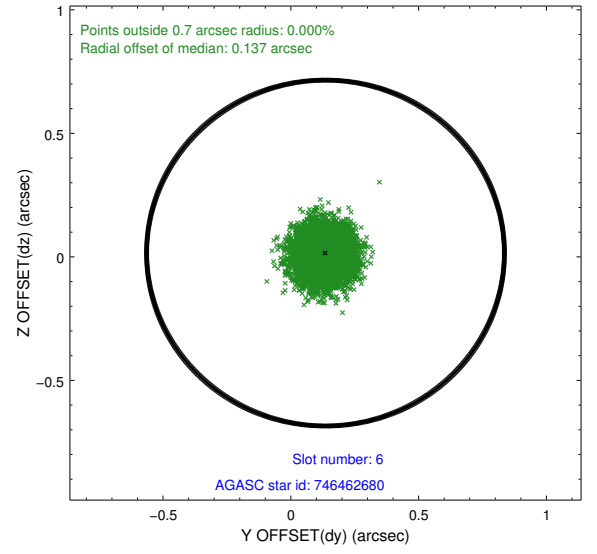
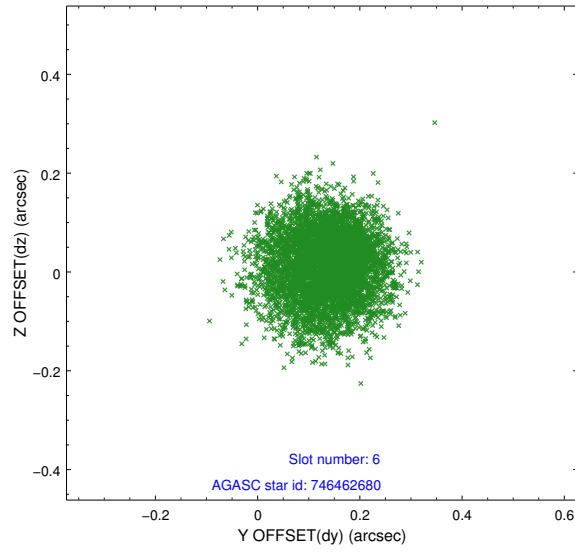
2.4.2 Slot 4



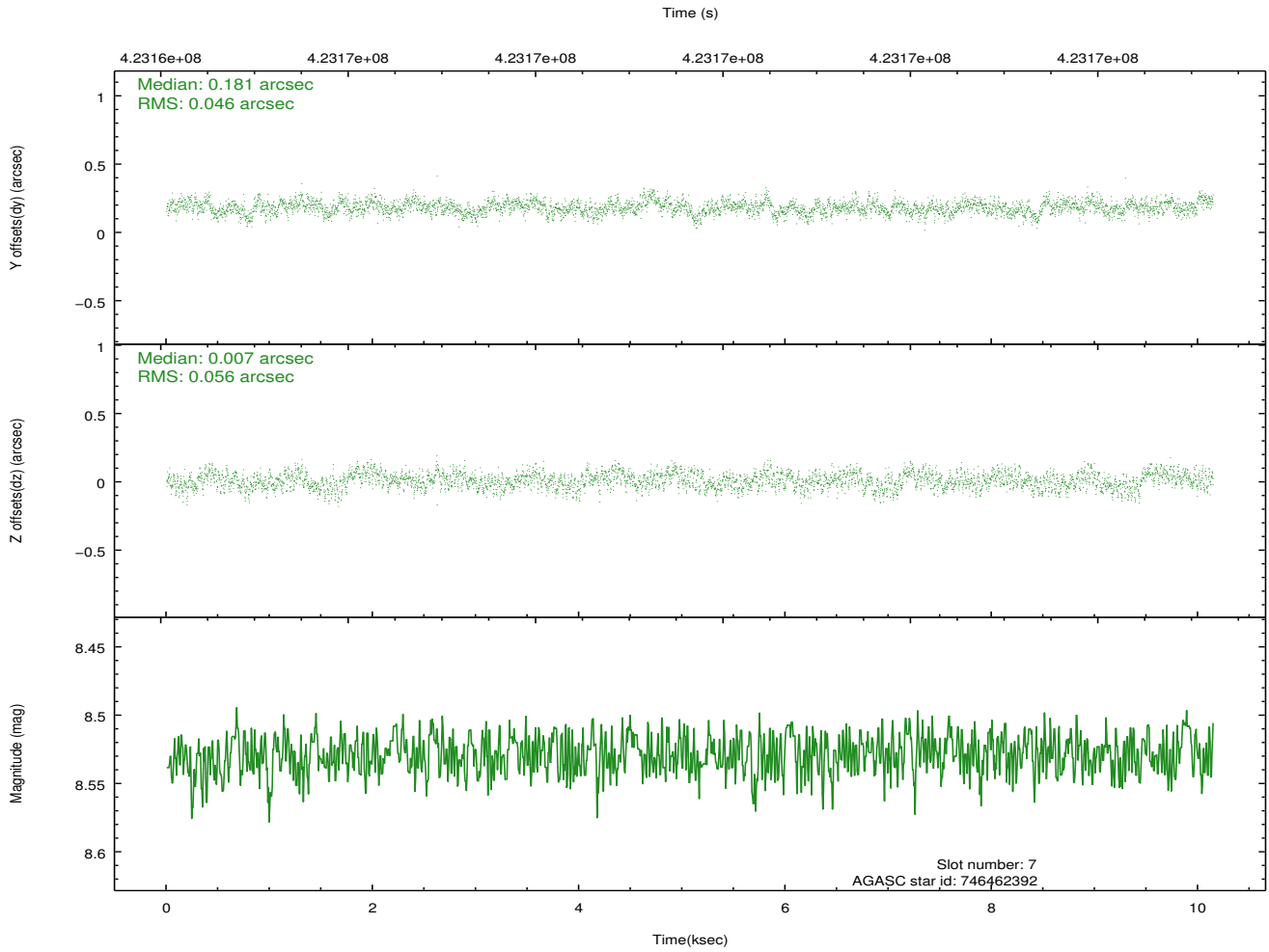
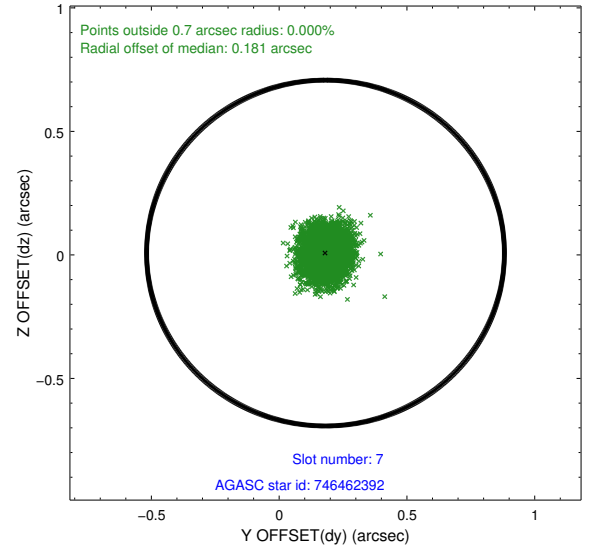
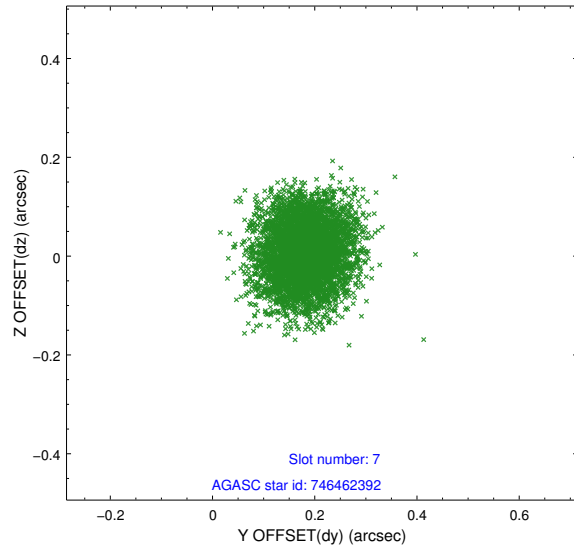
2.4.3 Slot 5



2.4.4 Slot 6

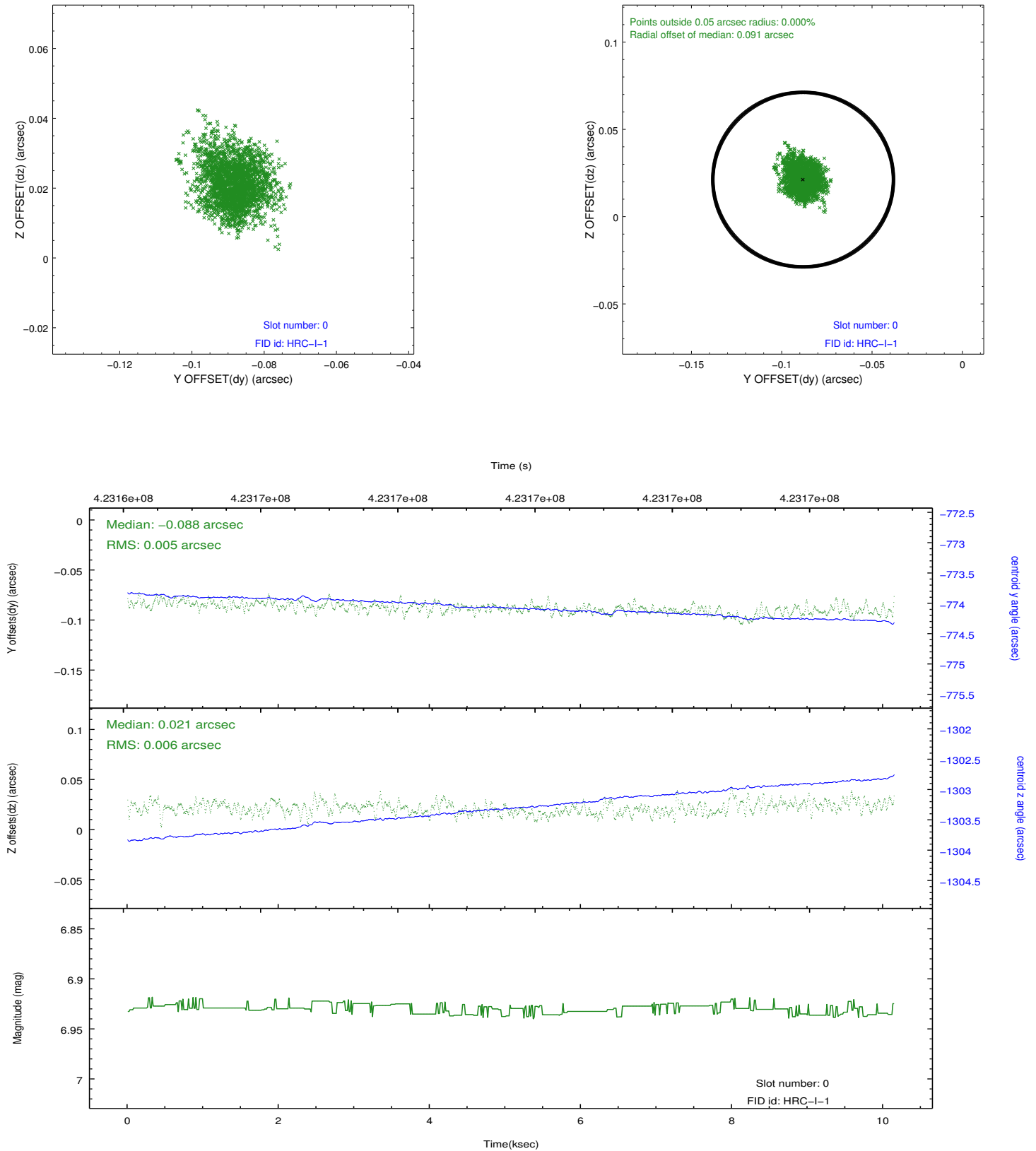


2.4.5 Slot 7

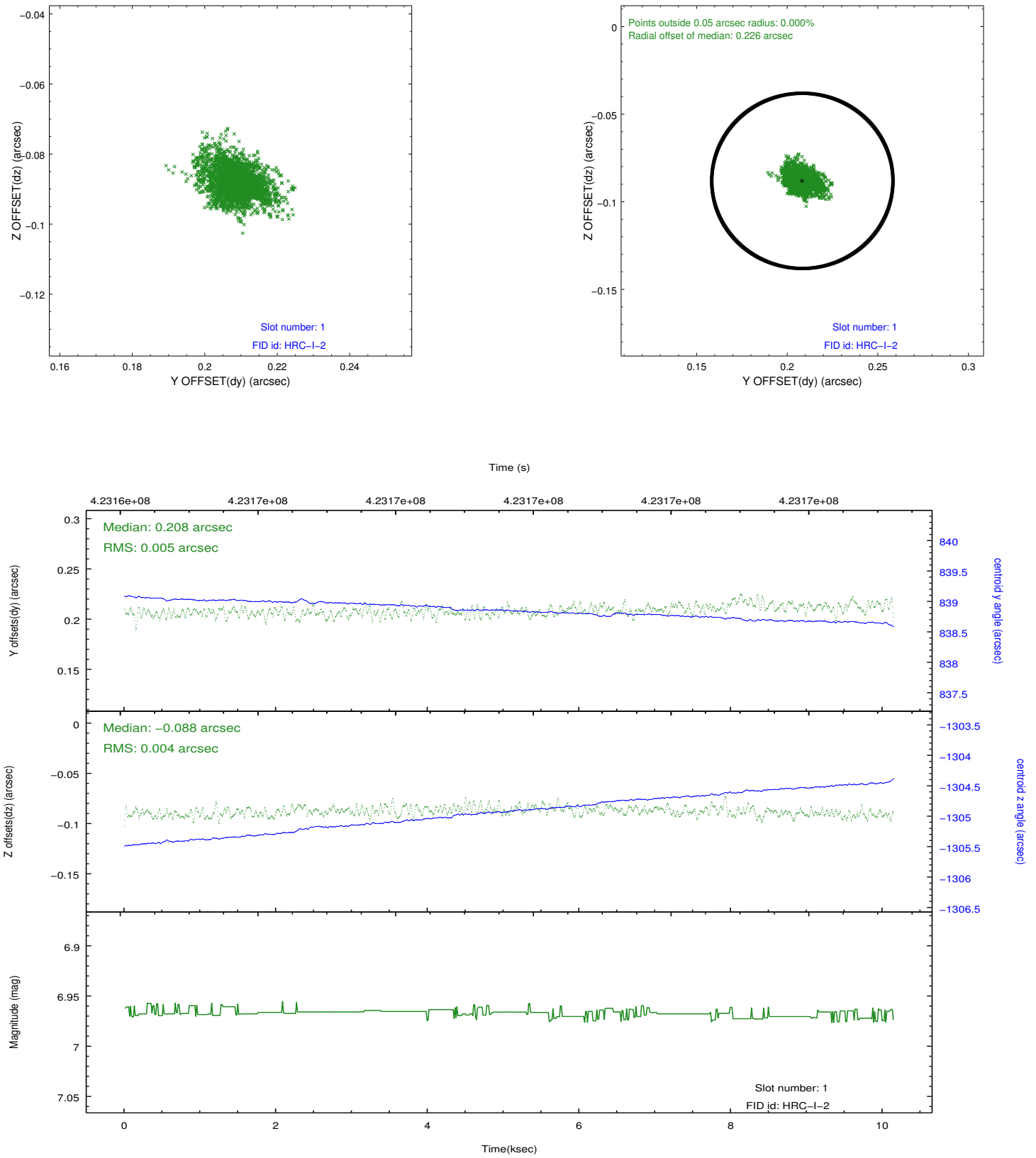


2.5 FID Slots

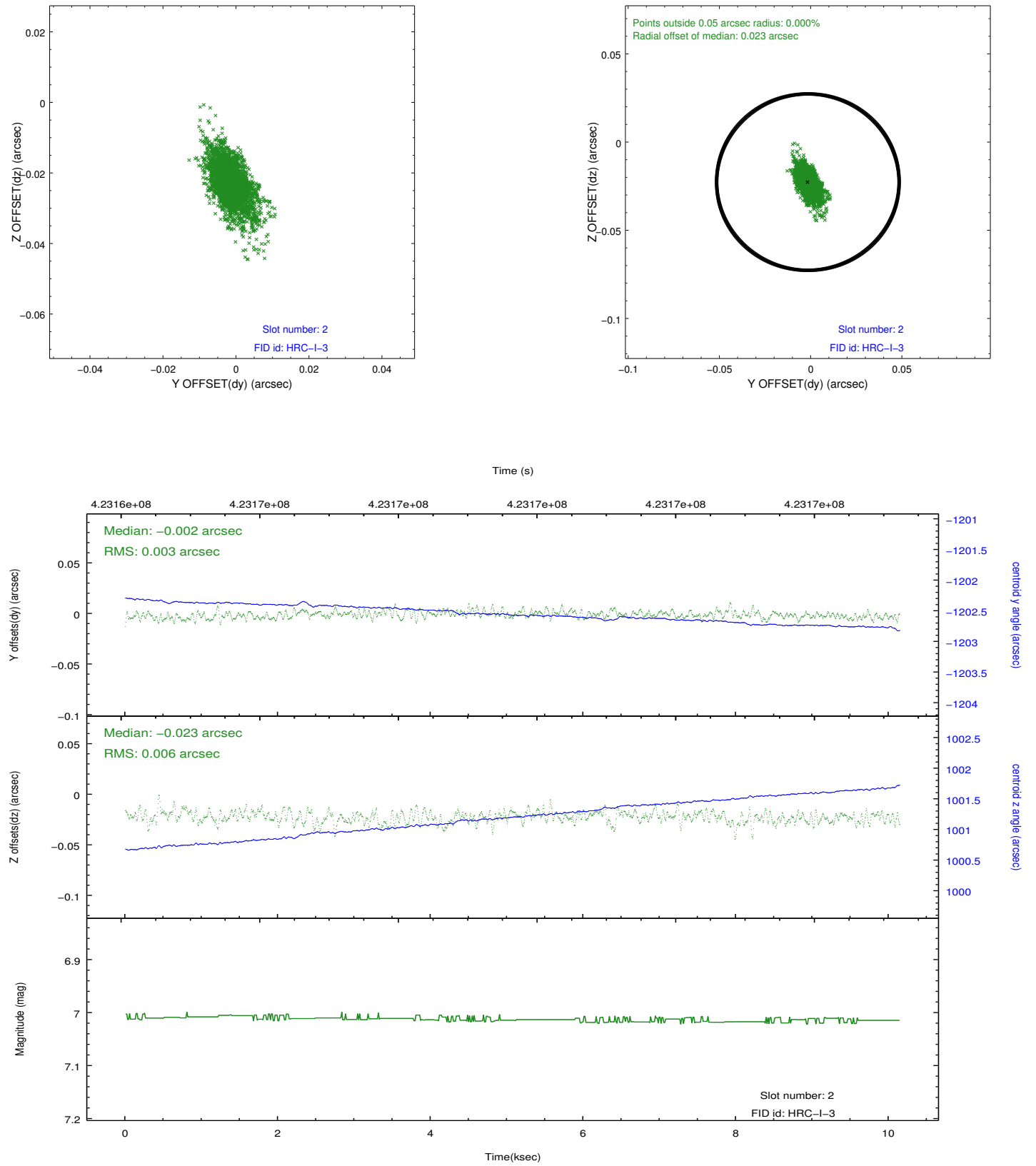
2.5.1 Slot 0



2.5.2 Slot 1



2.5.3 Slot 2



A Summary

A.1 Status

V&V Scientist	Beth Sundheim
V&V Date (YYYY-MM-DD)	2012.07.29
V&V Edition	1
V&V Disposition and Status	OK
V&V Charge Time	10.146731776714

A.2 Comments