

V&V Reference Report

L2 ASCDS Version : 8.4.5

Observation 12026 - L2 Version 3
Chandra X-Ray Center

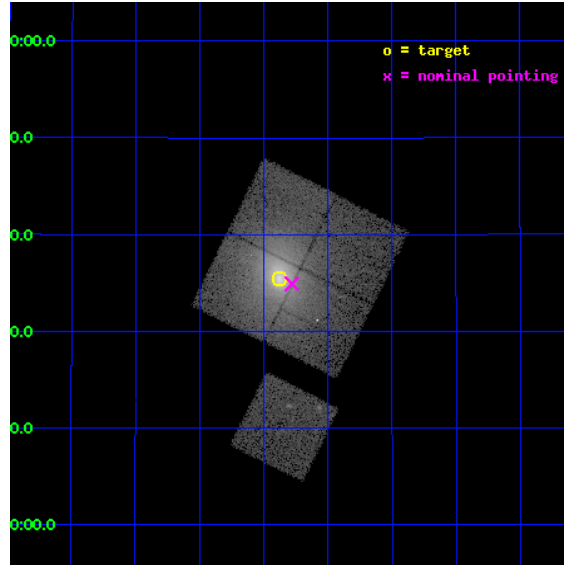
L2 Processing Date : Jul 3 2012

Contents

1	Front	2
2	OBI	3
2.1	OBI	3
2.1.1	Images	3
2.1.2	Bias	3
2.1.3	Parameters	4
2.1.4	Events	4
2.2	Compared Parameters	5
2.3	Aspect	6
2.4	Star Slots	9
2.4.1	Slot 3	9
2.4.2	Slot 4	10
2.4.3	Slot 5	11
2.4.4	Slot 6	12
2.5	FID Slots	13
2.5.1	Slot 0	13
2.5.2	Slot 1	14
2.5.3	Slot 2	15
A	Summary	16
A.1	Status	16
A.2	Comments	16

1 Front

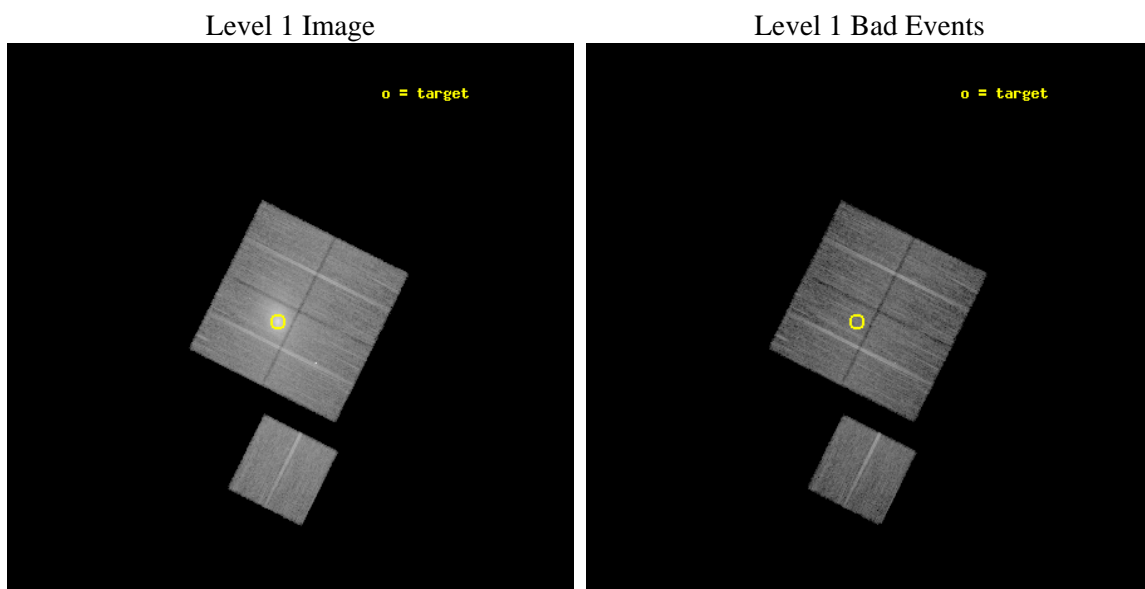
seq_num	890042	Sequence number
obs_id	12026	Observation id
title	AO-11 Calibration Observations of A1795	Proposal title
observer	Dr. CXC Calibration	Principal investigator
object	A1795	Source name
dtcycle	0	
cycle	P	events from which exps? Prim/Second/Both
ra_targ	207.219583	Observer's specified target RA [deg]
dec_targ	26.590833	Observer's specified target Dec [deg]
ra_nom	207.19528564418	Nominal RA [deg]
dec_nom	26.581983455284	Nominal Dec [deg]
roll_nom	206.51906889445	Nominal Roll [deg]
revision	3	Processing version of data
ontime	15121.759125948	Sum of GTIs [s]
livetime	14924.18221049	Livetime [s]
ontime0	15118.618115783	Sum of GTIs [s]
ontime1	15124.900116324	Sum of GTIs [s]
ontime2	15124.900116324	Sum of GTIs [s]
ontime3	15121.759125948	Sum of GTIs [s]
ontime6	15124.900116324	Sum of GTIs [s]
l2events	176298	Number of level 2 events



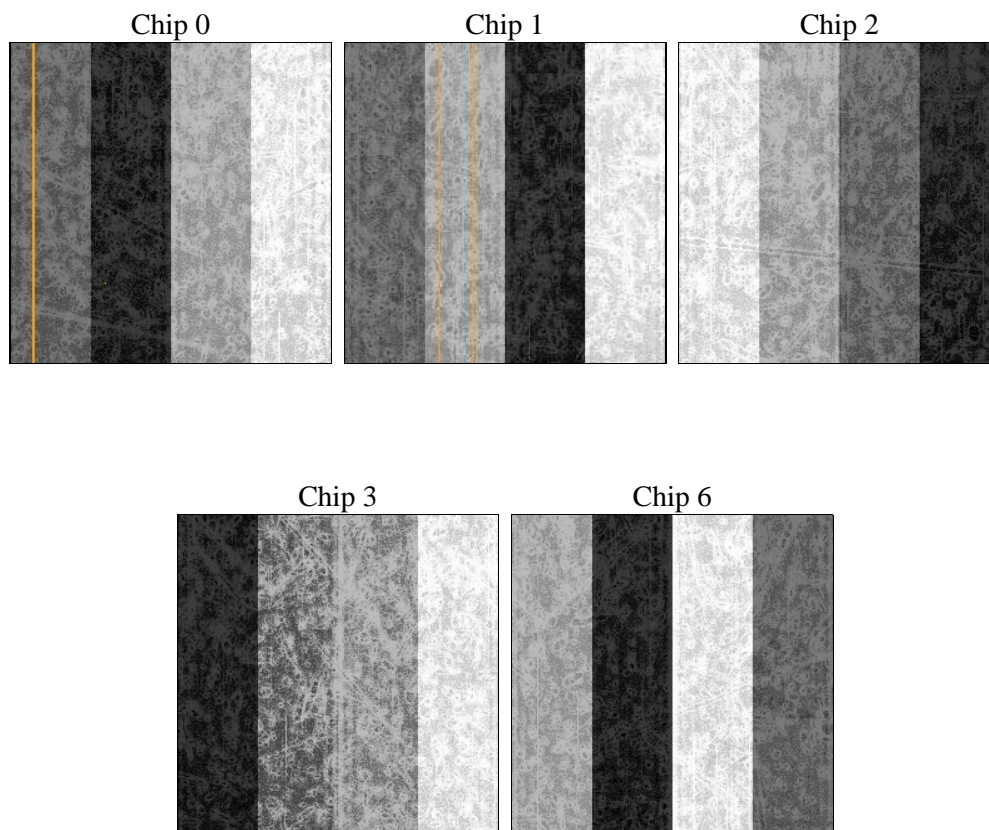
2 OBI

2.1 OBI

2.1.1 Images



2.1.2 Bias



2.1.3 Parameters

obi_num	0	Obi number	sched_exp_time	15000.000000	[s] Scheduled observation exposure time
ascdsver	8.4.5	Processing system revision	ontime	15121.759125948	Sum of GTIs [s]
caldbver	4.5.0	 	ontime0	15118.618115783	Sum of GTIs [s]
date	2012-07-03T17:33:15	Date and time of file creation	ontime1	15124.900116324	Sum of GTIs [s]
revision	3	Processing version of data	ontime2	15124.900116324	Sum of GTIs [s]
			ontime3	15121.759125948	Sum of GTIs [s]
			ontime6	15124.900116324	Sum of GTIs [s]
			l1events	739201	Number of level 1 events

2.1.4 Events

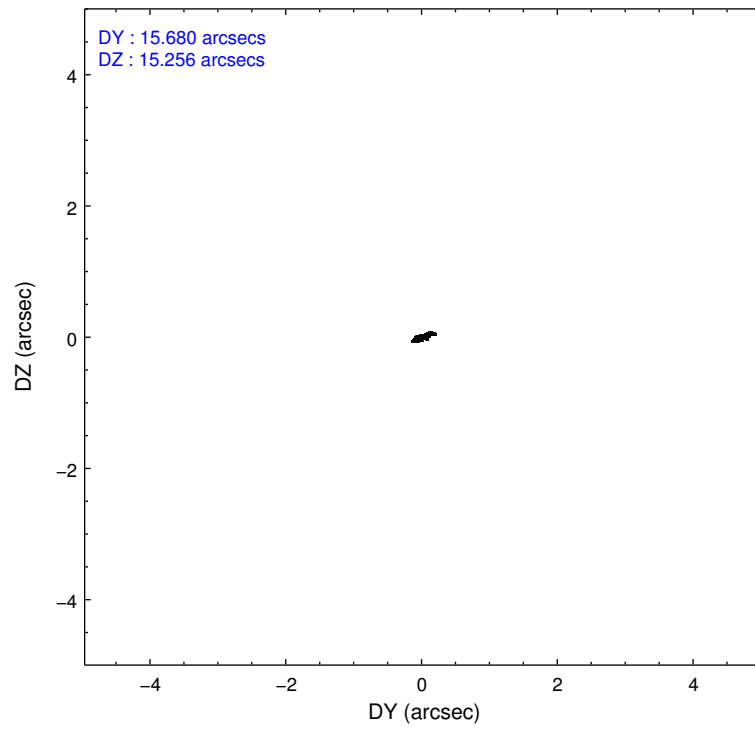
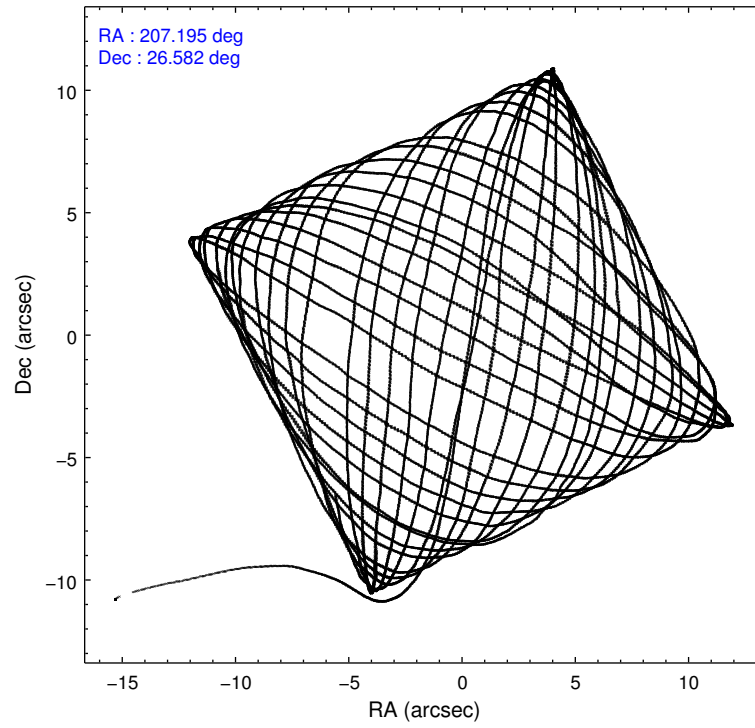
	ccd 0	ccd 1	ccd 2	ccd 3	ccd 6
level 1 events	119422	134163	146408	215452	123756
rejected events	102502	104121	117154	114298	110439
rejected %	85%	77%	80%	53%	89%

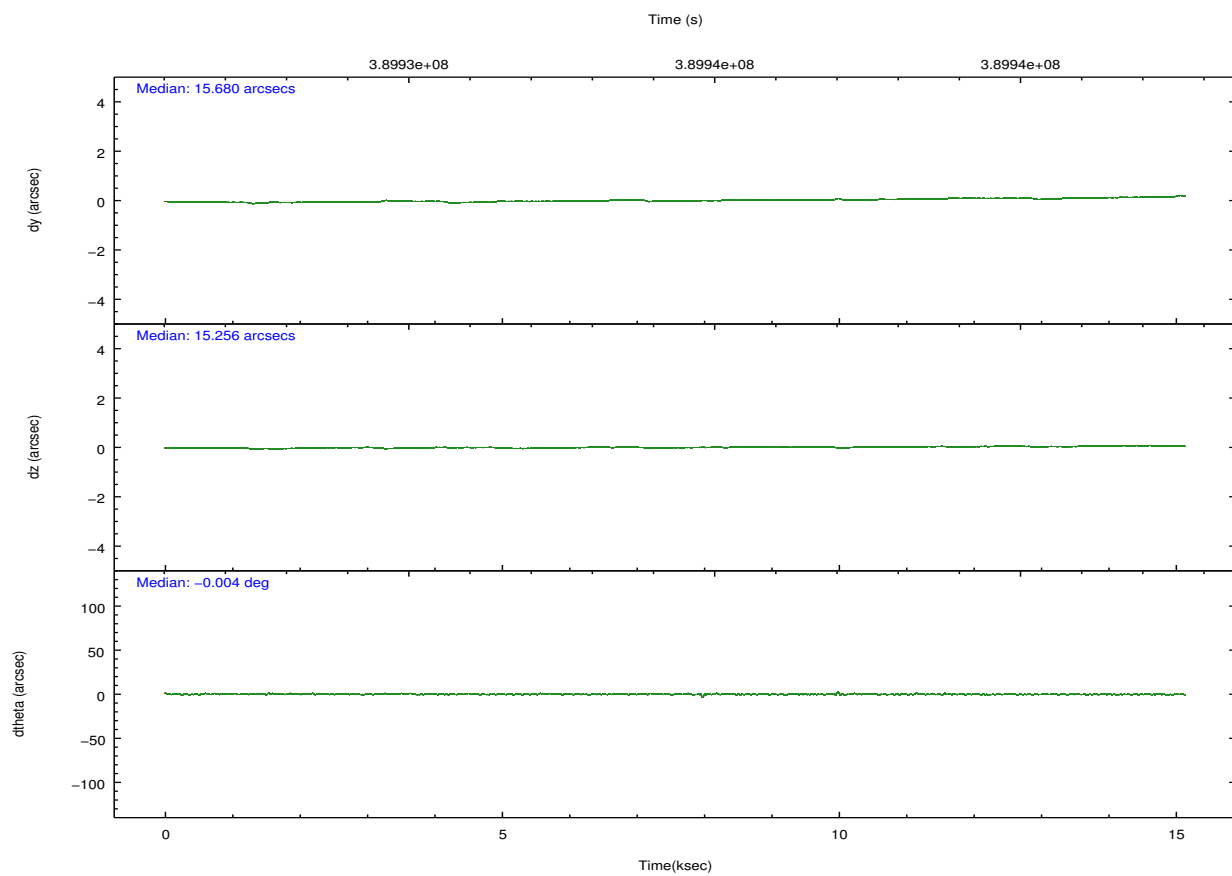
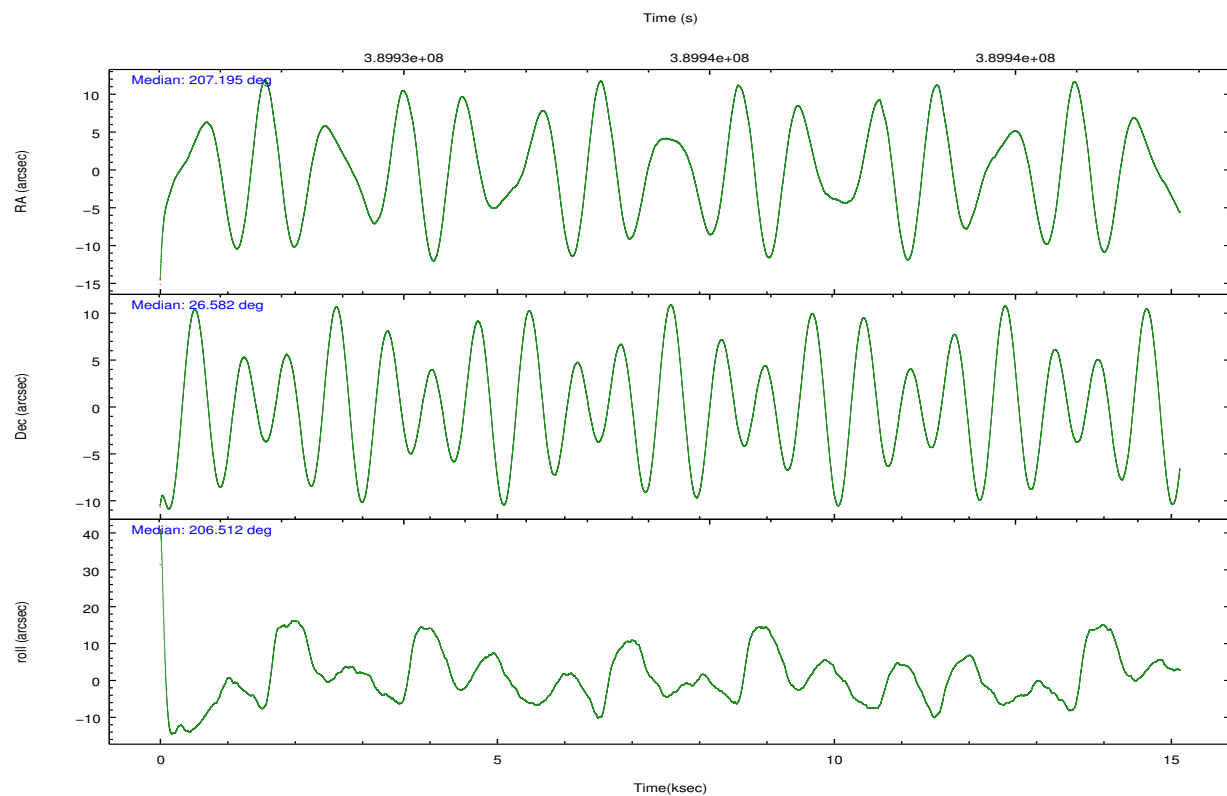
	ccd 0	ccd 1	ccd 2	ccd 3	ccd 6
grade 0 events	8203	18438	19282	78949	5228
	6%	13%	13%	36%	4%
grade 1 events	88	125	221	588	63
	0%	0%	0%	0%	0%
grade 2 events	3843	5276	4734	11551	3135
	3%	3%	3%	5%	2%
grade 3 events	1633	1950	1925	3975	1469
	1%	1%	1%	1%	1%
grade 4 events	1505	2068	1810	4014	1408
	1%	1%	1%	1%	1%
grade 5 events	5028	5371	4855	5916	5307
	4%	4%	3%	2%	4%
grade 6 events	2720	3542	2821	4685	2991
	2%	2%	1%	2%	2%
grade 7 events	96402	97393	110760	105774	104155
	80%	72%	75%	49%	84%

2.2 Compared Parameters

Parameter	Planned	Actual	Parameter	Planned	Actual
Instrument	ACIS	ACIS	Obspar format version number	7	7
Detector	ACIS-01236	ACIS-01236	Obspar file type	PREDICTED	ACTUAL
Grating	NONE	NONE	Obspar update status	NONE	UPDATED
Data mode	VFAINT	VFAINT	Number of optional ACIS chips dropped	0	0
Observation mode	POINTING	POINTING	On-chip summing requested	N	N
[deg] Pointing RA	207.212151	207.1952856441801	Subarray requested	NONE	NONE
[deg] Pointing Dec	26.605027	26.58198345528372	Alternating exposures requested	N	N
[deg] Pointing Roll	206.302782	206.5190688944488	[s] Primary exposure time	0.000000	3.1
[mm] SIM focus pos	-0.782348	-0.7809083437167272			
[mm] SIM defocus	0	0.001439871863259334			
[mm] SIM translation stage pos	-230.252463	-230.2509380556586			
[mm] SIM translation stage offset	-3.34	-3.341514947271122			
[s] Observation start time (MET)	389926911.184000	389925397.0816			
Observation start date	2010-05-11T01:00:45	2010-05-11T00:36:37			
[s] Observation end time (MET)	389941911.184000	389942519.70747			
Observation end date	2010-05-11T05:10:45	2010-05-11T05:21:59			
Read mode	TIMED	TIMED			

2.3 Aspect



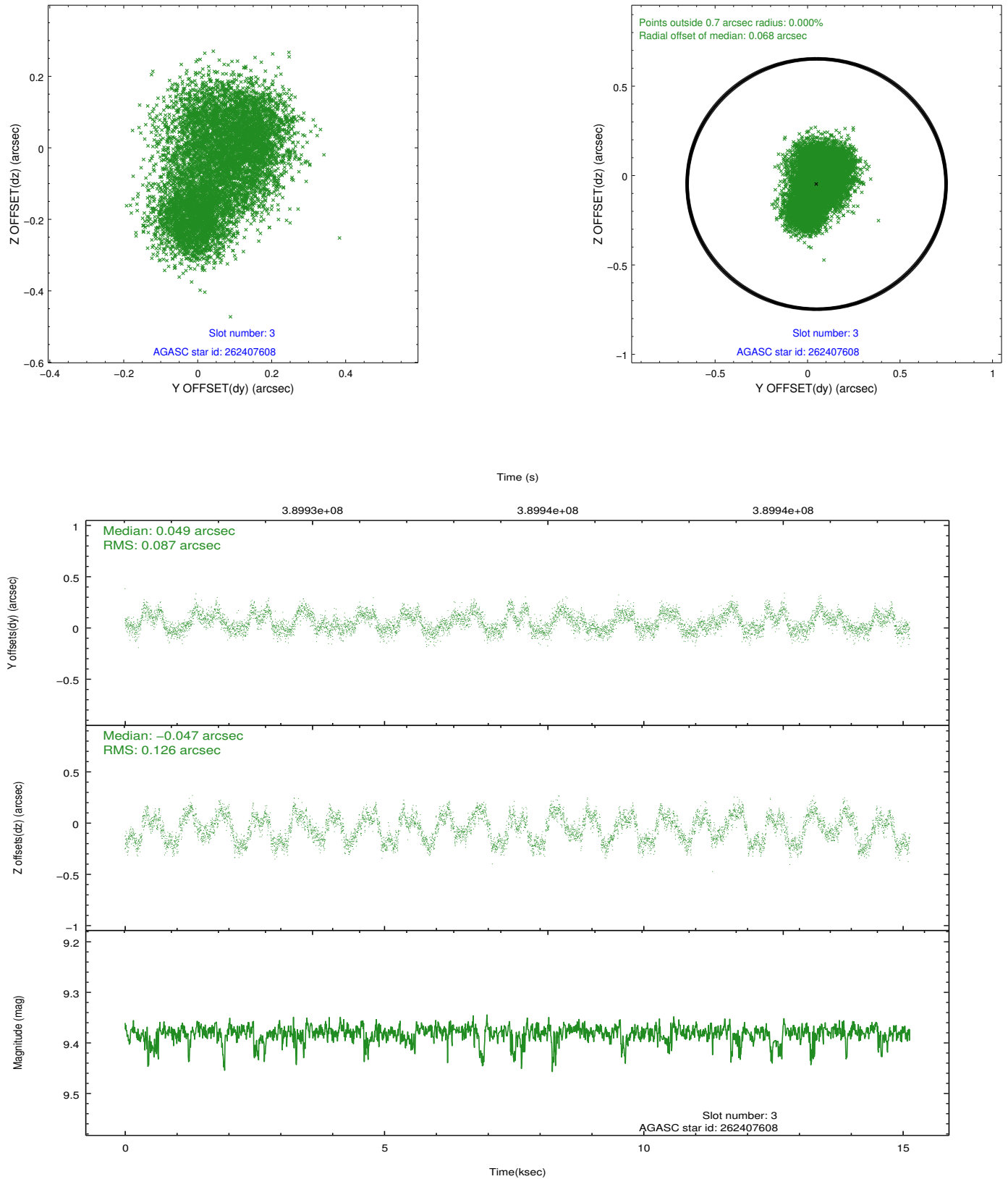


Slot Statistics

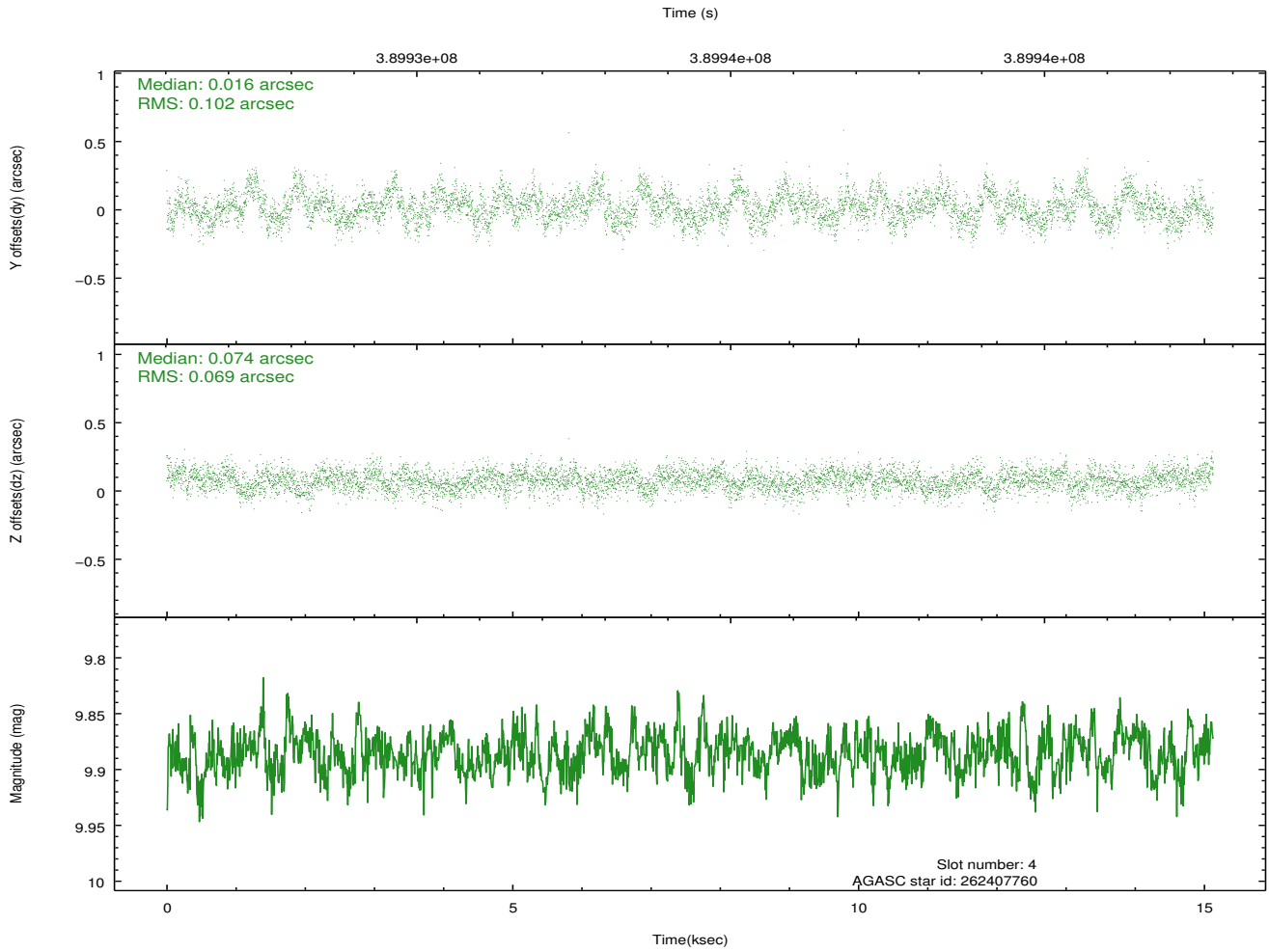
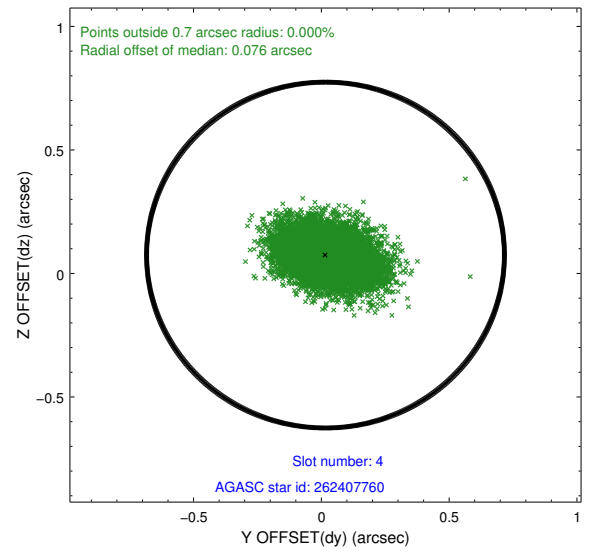
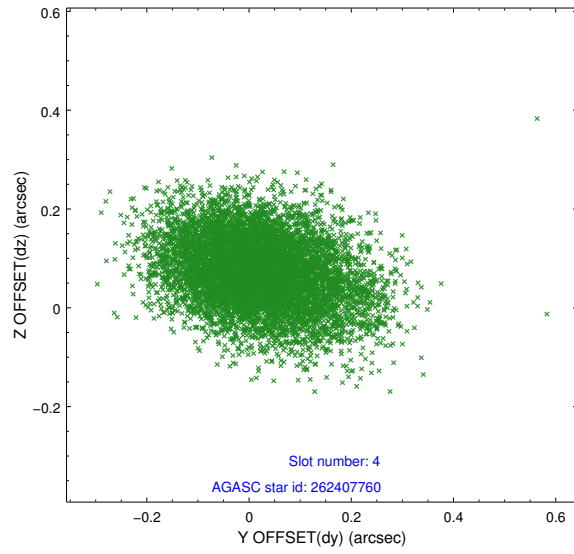
slot	status	id	mag	n_pts	med_dy	med_dz	dr1	dr2	ra	dec	mean_y	mean_z
0	FID	ACIS-I-1	7.05	3691	0.049	-0.006	0.007	0.016	0.000000	0.000000	923.77	-907.38
1	FID	ACIS-I-5	7.03	3691	-0.228	0.051	0.007	0.017	0.000000	0.000000	-1824.51	989.91
2	FID	ACIS-I-6	7.05	3691	0.087	0.025	0.007	0.013	0.000000	0.000000	388.95	1634.80
3	GUIDE	262407608	9.38	7350	0.049	-0.047	0.171	0.243	207.378401	26.435507	-210.08	784.45
4	GUIDE	262407760	9.89	7366	0.016	0.074	0.129	0.218	206.566773	26.577263	1905.25	-835.47
5	GUIDE	262408936	9.74	7372	0.147	-0.004	0.142	0.227	207.154731	26.726554	-27.80	-473.81
6	GUIDE	262409624	10.08	7362	-0.210	-0.026	0.254	0.374	207.610037	27.074851	-1893.65	-953.04
7	OMITTED		0.00	0	0.000	0.000	0.000	0.000	0.000000	0.000000	0.00	0.00

2.4 Star Slots

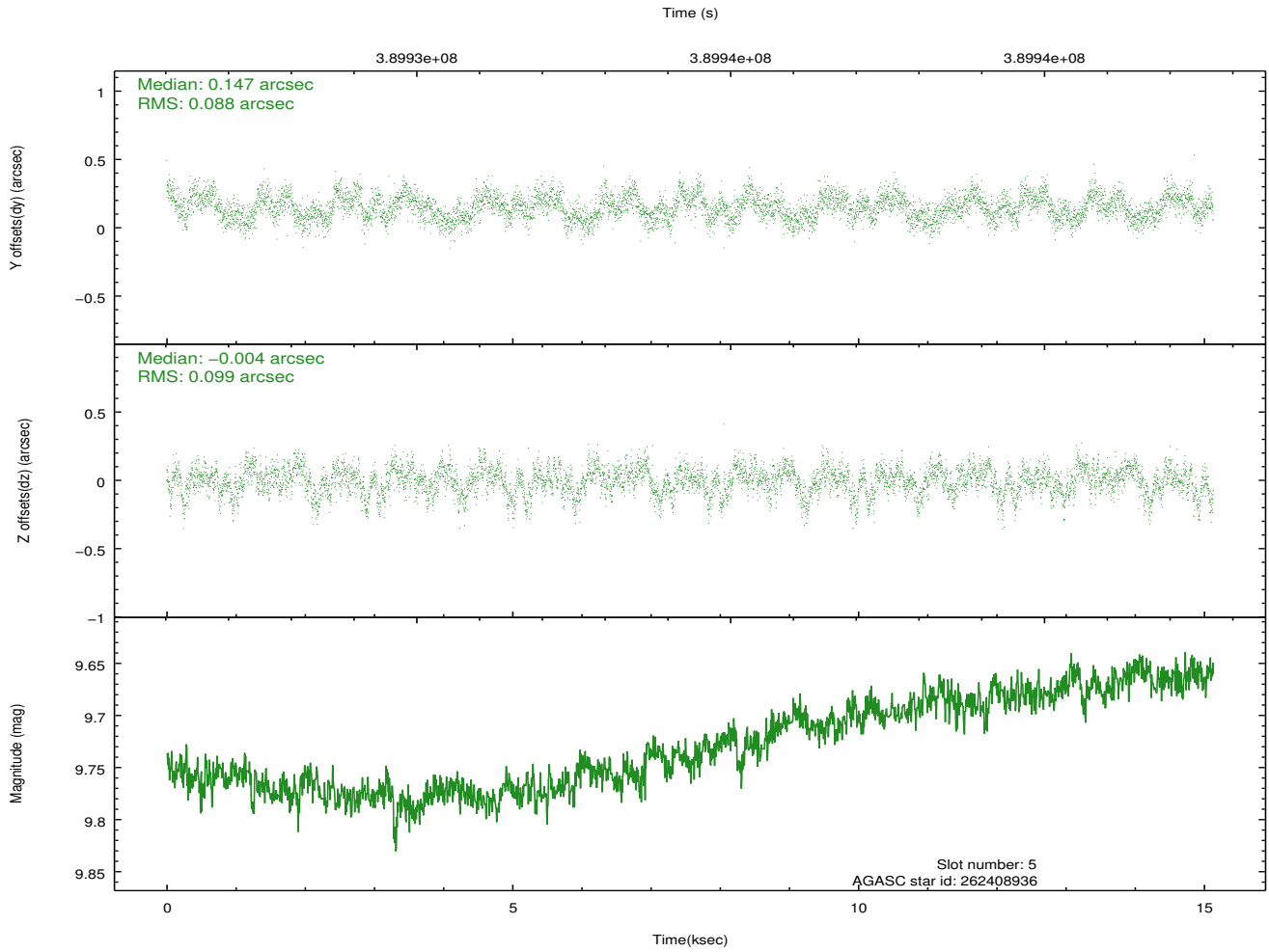
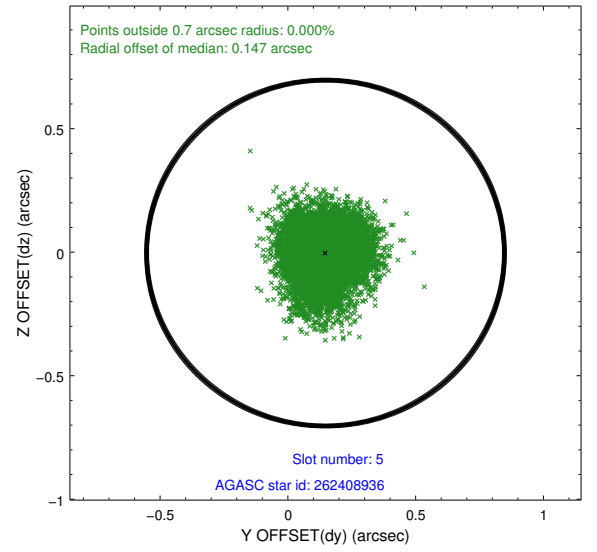
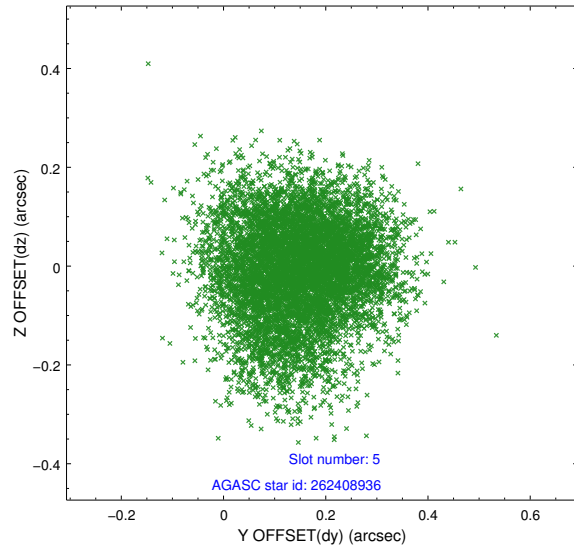
2.4.1 Slot 3



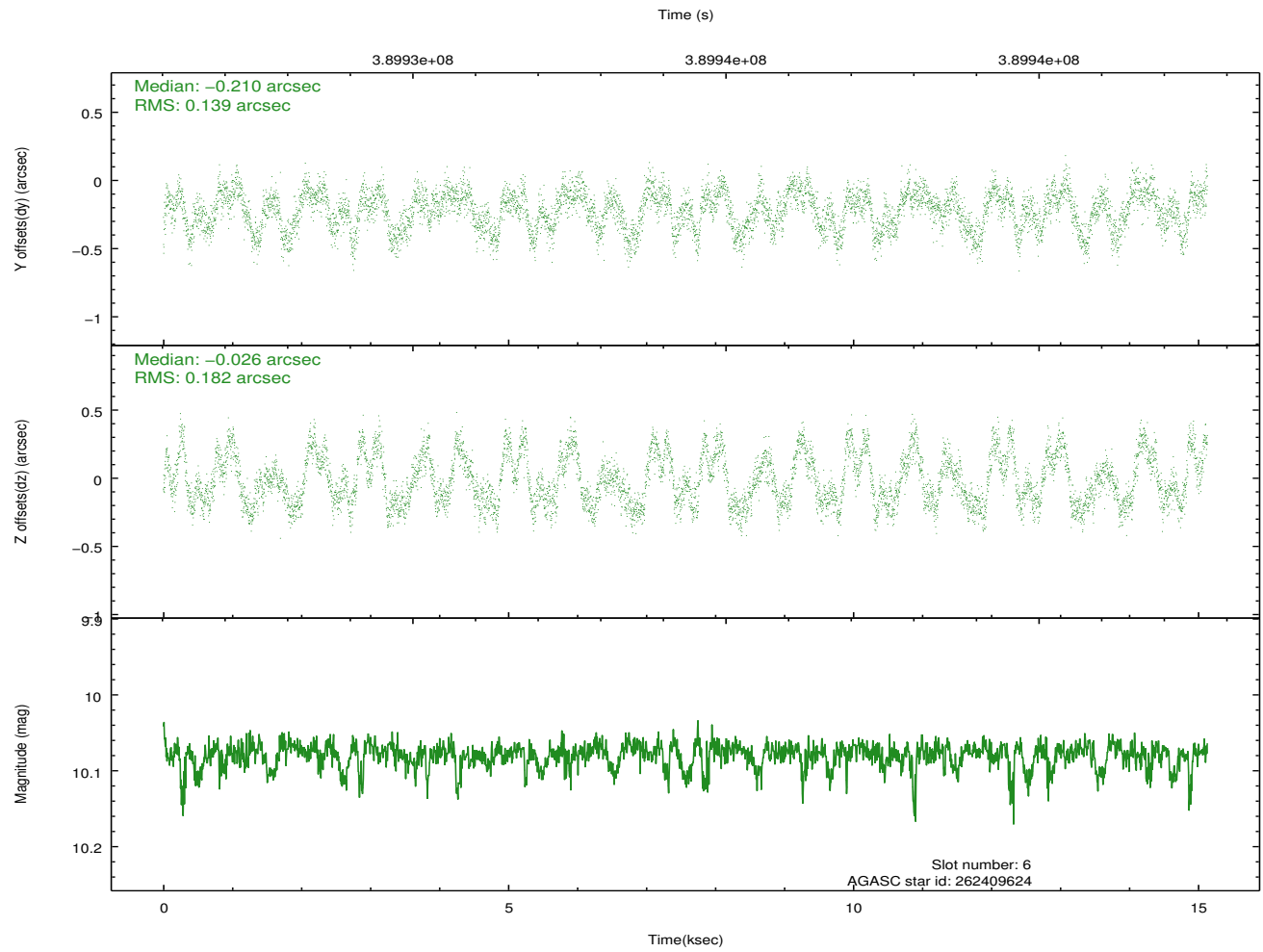
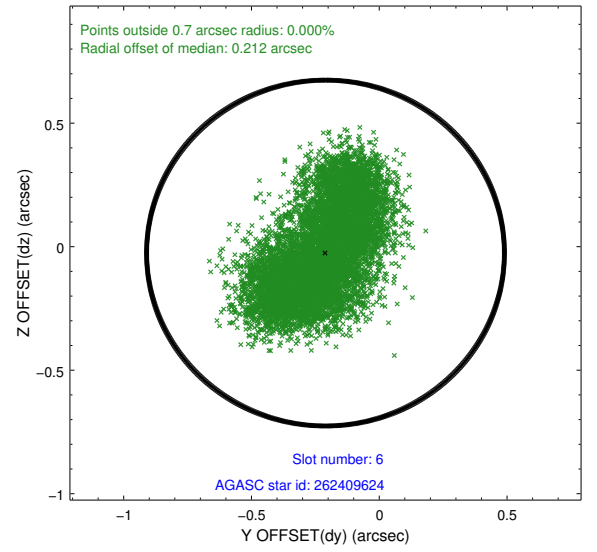
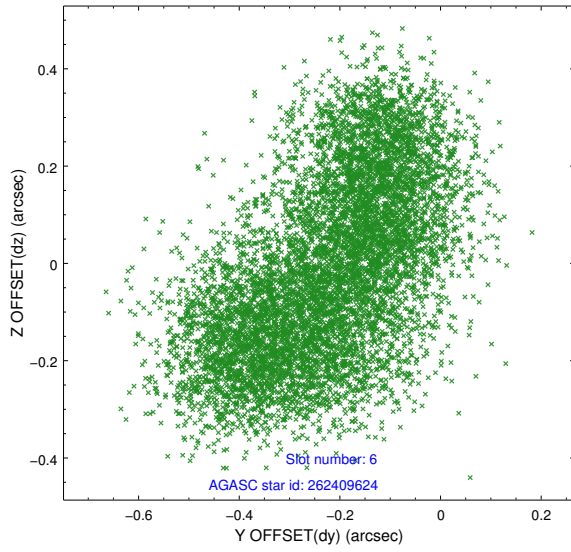
2.4.2 Slot 4



2.4.3 Slot 5

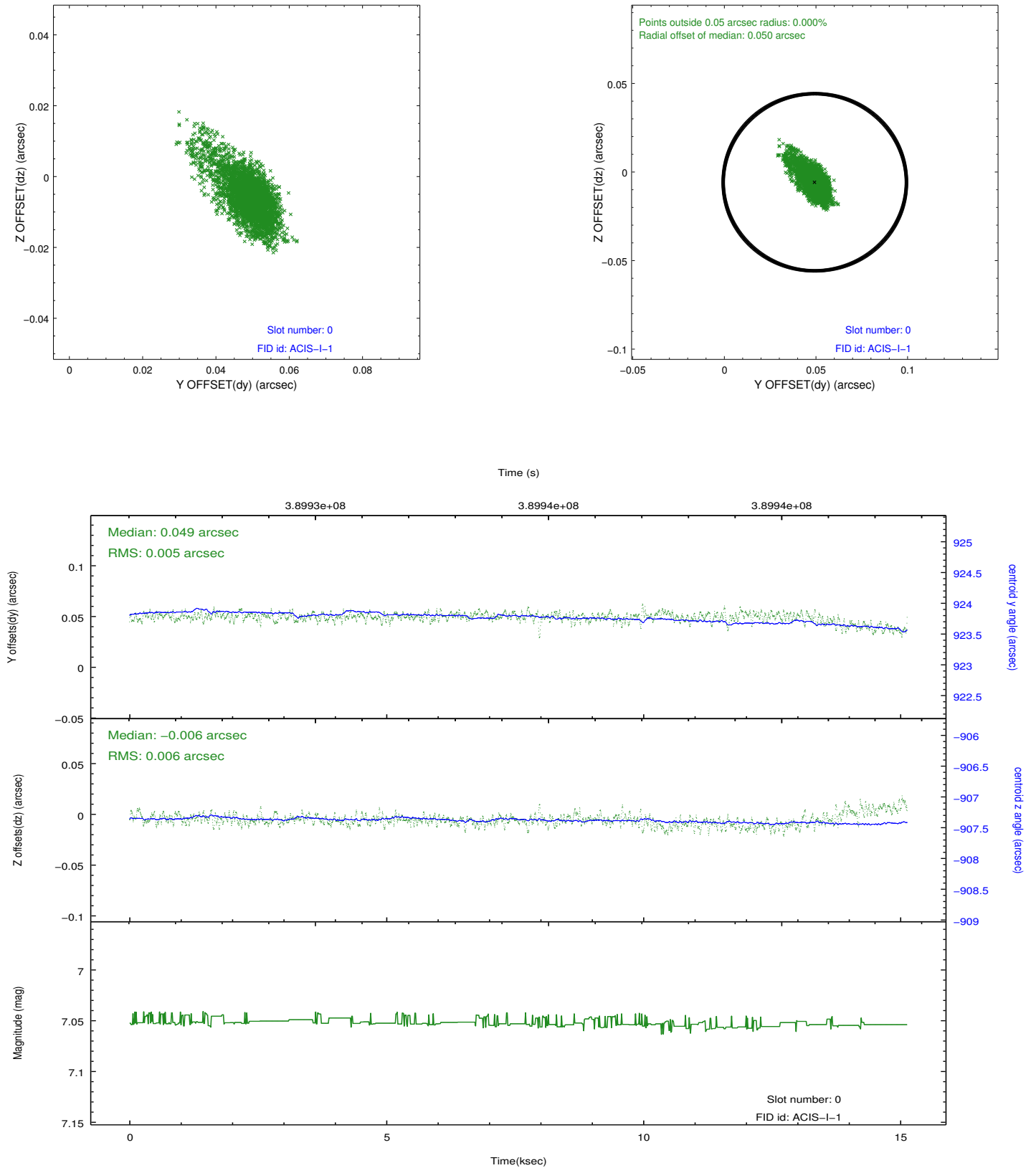


2.4.4 Slot 6

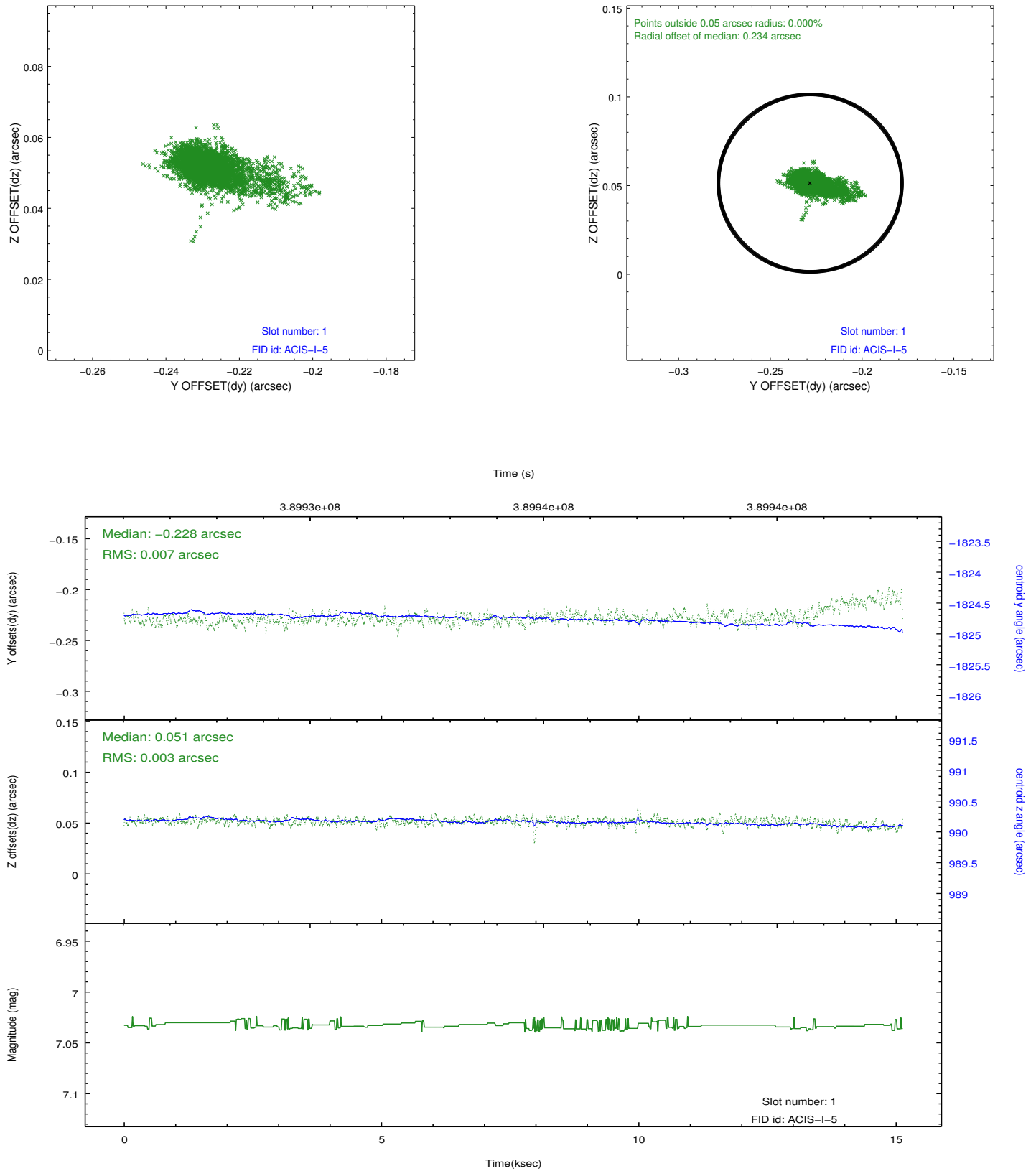


2.5 FID Slots

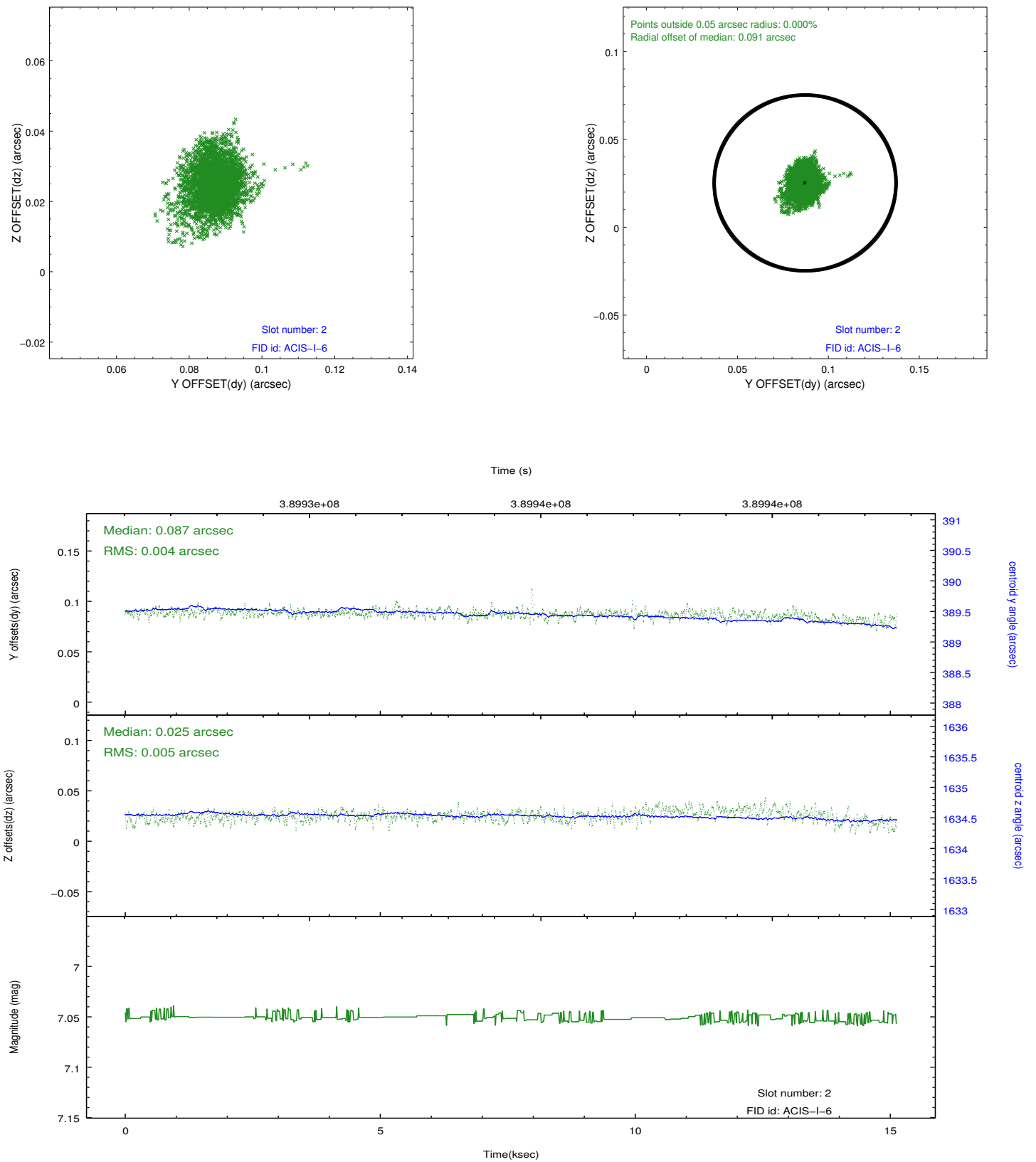
2.5.1 Slot 0



2.5.2 Slot 1



2.5.3 Slot 2



A Summary

A.1 Status

V&V Scientist	Jen Lauer
V&V Date (YYYY-MM-DD)	2012.07.11
V&V Edition	1
V&V Disposition and Status	OK
V&V Charge Time	15.121759126008

A.2 Comments

The guide star in slot 7 was removed from the aspect solution due to poor data quality. The aspect solution is improved by the removal of this guide star from the solution.