

V&V Reference Report

L2 ASCDS Version : 8.4.5

Observation 11898 - L2 Version 2
Chandra X-Ray Center

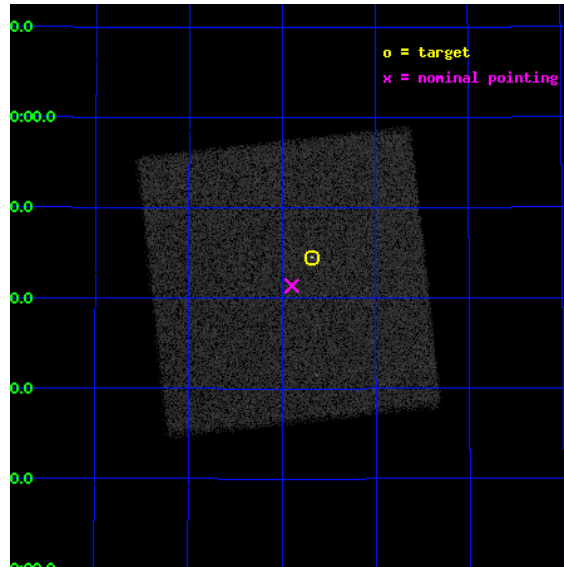
L2 Processing Date : Jul 3 2012

Contents

1	Front	2
2	OBI	3
2.1	OBI	3
2.1.1	Images	3
2.1.2	Parameters	4
2.1.3	Events	4
2.2	Compared Parameters	5
2.3	Aspect	6
2.4	Star Slots	9
2.4.1	Slot 3	9
2.4.2	Slot 4	10
2.4.3	Slot 5	11
2.4.4	Slot 6	12
2.4.5	Slot 7	13
2.5	FID Slots	14
2.5.1	Slot 0	14
2.5.2	Slot 1	15
2.5.3	Slot 2	16
A	Summary	17
A.1	Status	17
A.2	Comments	17

1 Front

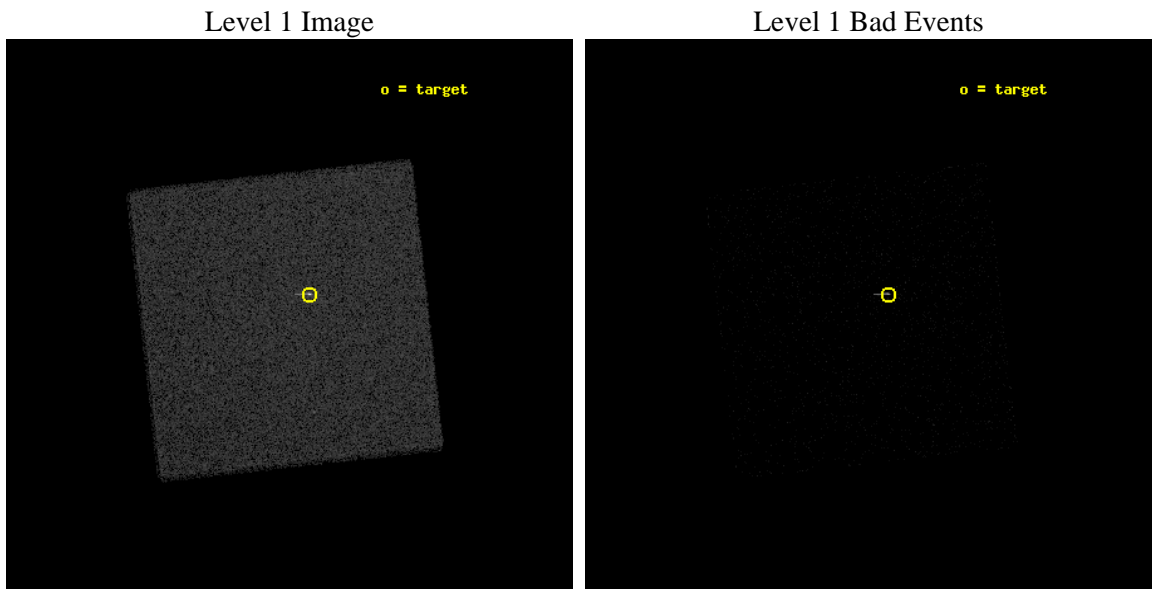
seq_num	290887	Sequence number
obs_id	11898	Observation id
title	AO-11 Calibration Observations to Monitor the Spatial Variations in the HRC-I Gain	Proposal title
observer	Dr. CXC Calibration	Principal investigator
object	ArLac	Source name
ra_targ	332.17	Observer's specified target RA [deg]
dec_targ	45.742306	Observer's specified target Dec [deg]
ra_nom	332.22385280448	Nominal RA [deg]
dec_nom	45.689817256616	Nominal Dec [deg]
roll_nom	218.62734666246	Nominal Roll [deg]
revision	2	Processing version of data
ontime	1175.9313103557	[s]
livetime	1162.9171348264	Ontime multiplied by DTCOR
l2events	92201	Number of level 2 events



2 OBI

2.1 OBI

2.1.1 Images



2.1.2 Parameters

obi_num	0	Obi number	sched_exp_time	1000.000000	[s] Scheduled observation exposure time
ascdsver	8.4.5	Processing system revision	ontime	1175.9313103557	[s]
caldbver	4.5.0	 	l1events	164772	Number of level 1 events
date	2012-07-03T23:48:49	Date and time of file creation			
revision	2	Processing version of data			

2.1.3 Events

Level 1 Events

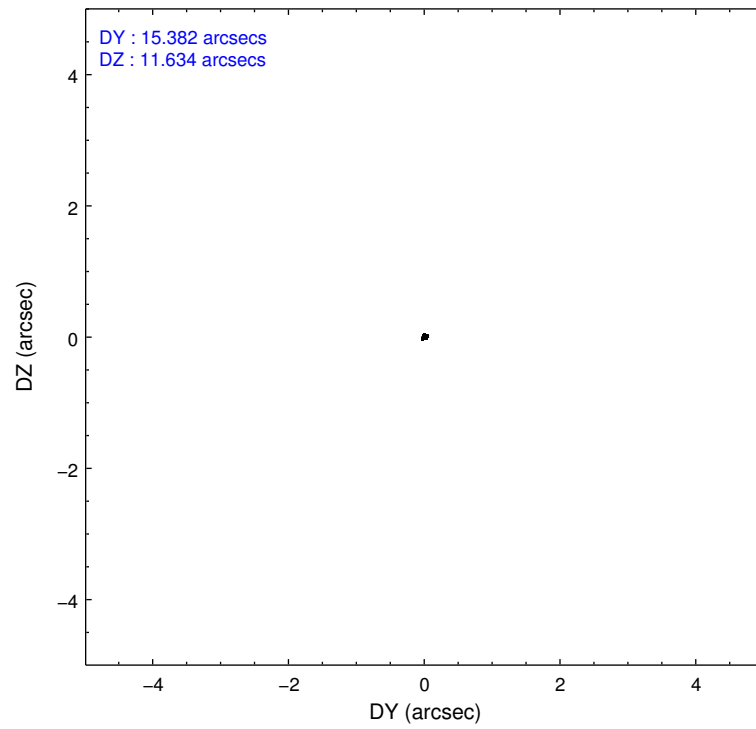
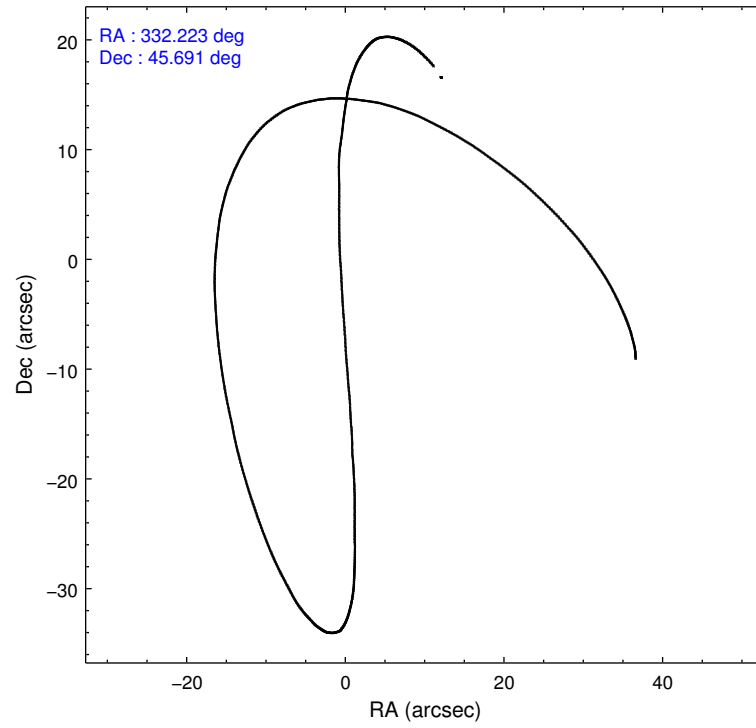
	segment 0
level 1 events	164772
rejected events	37161
rejected %	22%

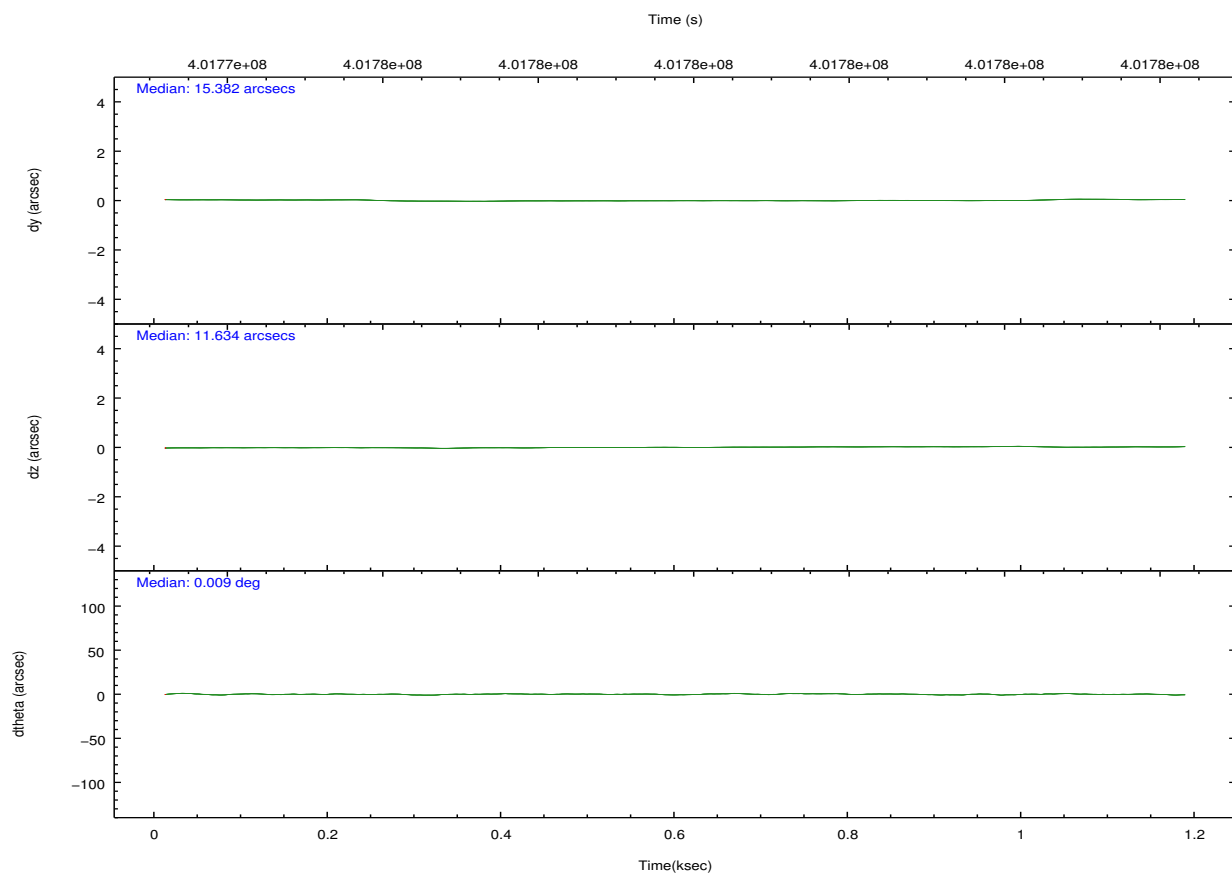
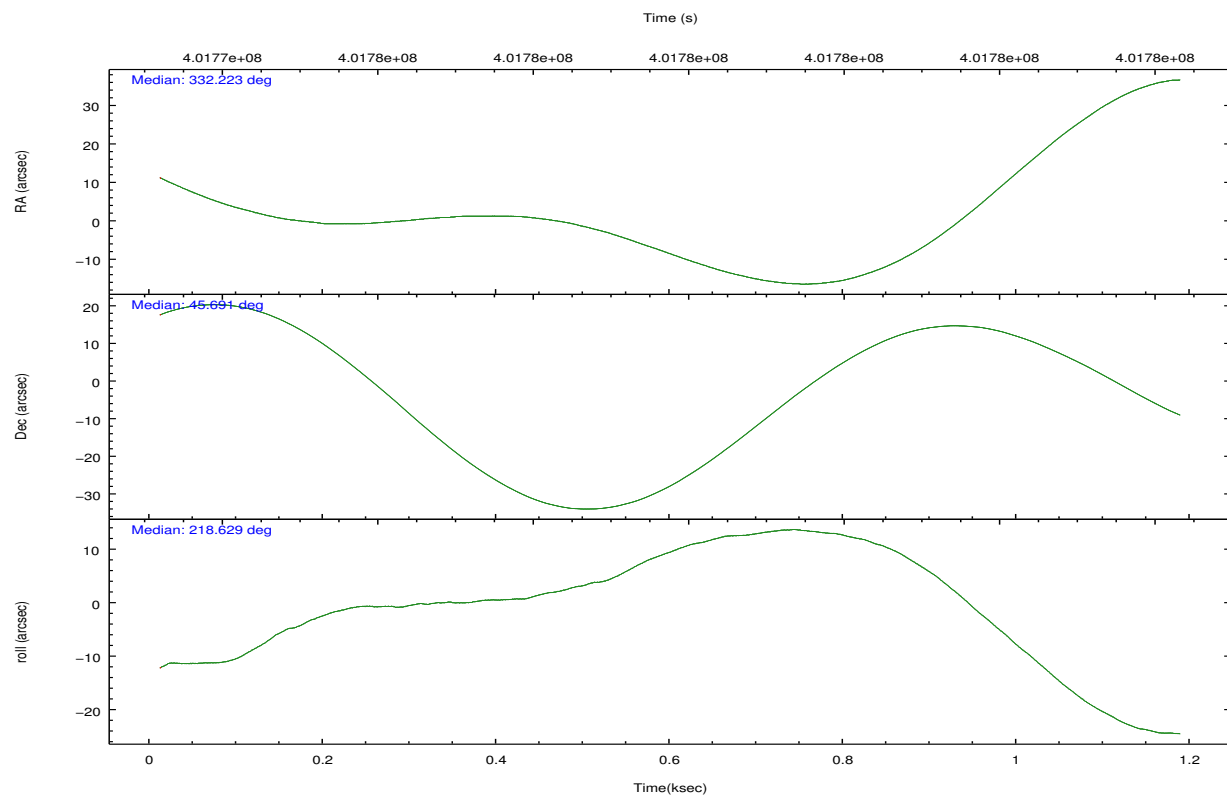
2.2 Compared Parameters

Parameter	Planned	Actual
Instrument	HRC	HRC
Detector	HRC-I	HRC-I
Grating	NONE	NONE
Data mode	OBSERVING	OBSERVING
Observation mode	POINTING	POINTING
[deg] Pointing RA	332.237326	332.2238528044792
[deg] Pointing Dec	45.714622	45.68981725661644
[deg] Pointing Roll	218.713208	218.6273466624638
[mm] SIM focus pos	-1.040293	-1.038866356238299
[mm] SIM defocus	0	0.001426264420575141
[mm] SIM translation stage pos	126.985494	126.9829799899862
[mm] SIM translation stage offset	0	0.002508901615314585
[s] Observation start time (MET)	401774973.184000	401774597.56224
Observation start date	2010-09-25T04:08:27	2010-09-25T04:03:17
[s] Observation end time (MET)	401775973.184000	401776107.38732
Observation end date	2010-09-25T04:25:07	2010-09-25T04:28:27

Parameter	Planned	Actual
Obspar format version number	7	7
Obspar file type	PREDICTED	ACTUAL
Obspar update status	NONE	UPDATED

2.3 Aspect



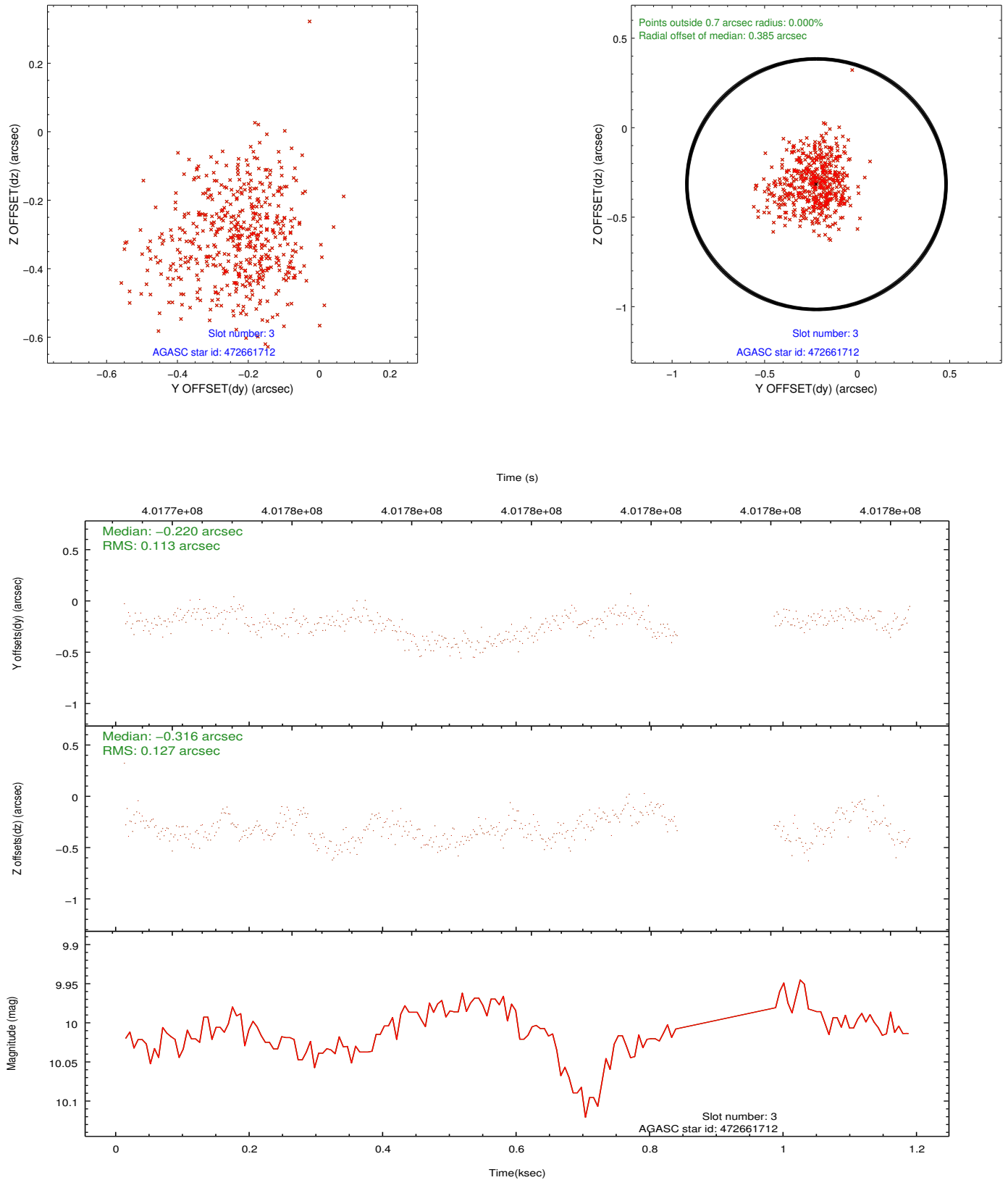


Slot Statistics

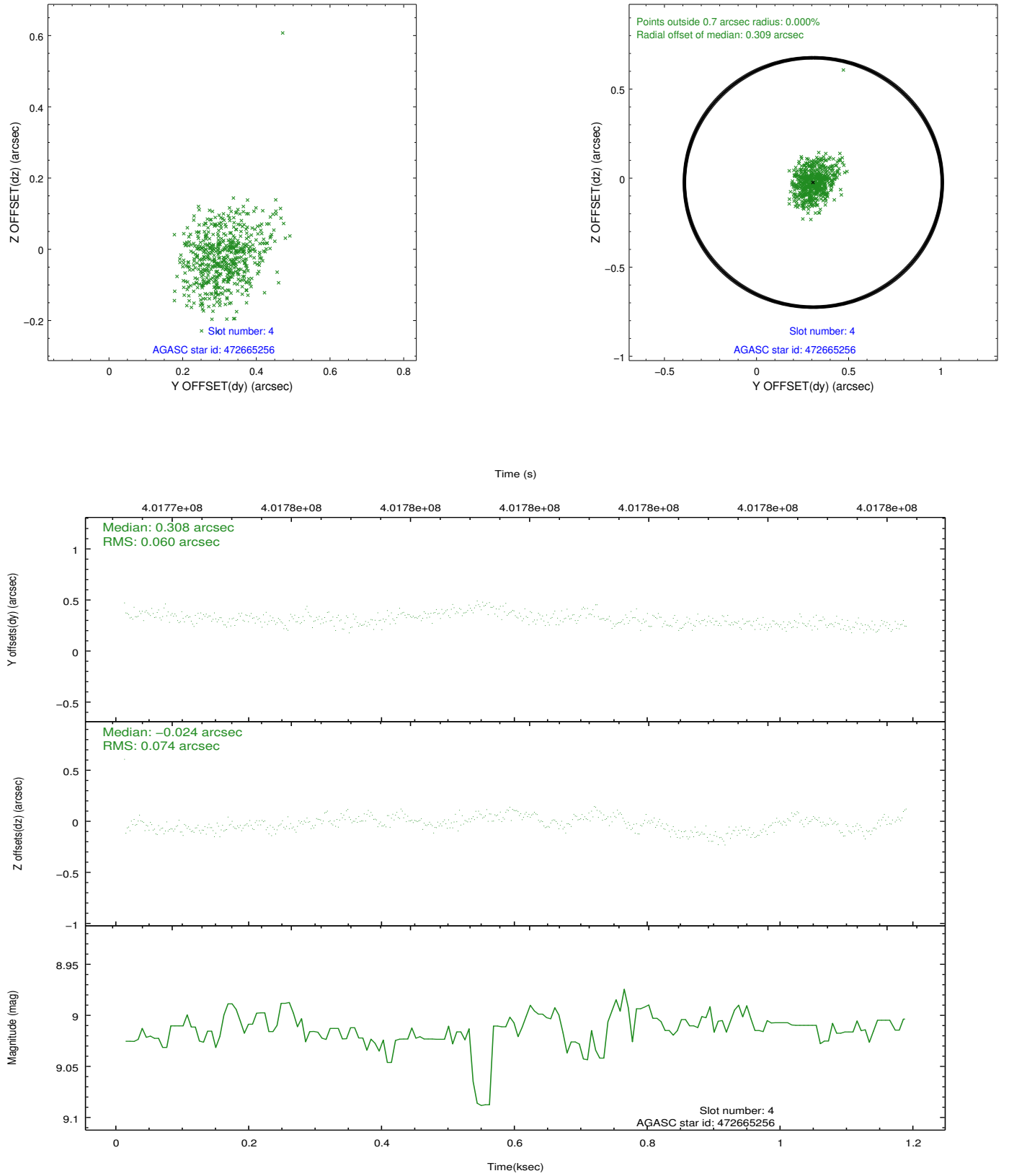
slot	status	id	mag	n_pts	med_dy	med_dz	dr1	dr2	ra	dec	mean_y	mean_z
0	FID	HRC-I-1	6.96	288	-0.073	0.010	0.006	0.010	0.000000	0.000000	-771.28	-1299.61
1	FID	HRC-I-2	6.99	288	0.215	-0.111	0.005	0.009	0.000000	0.000000	838.96	-1305.82
2	FID	HRC-I-3	7.05	287	-0.024	0.012	0.005	0.009	0.000000	0.000000	-1196.79	1000.41
3	BAD	472661712	10.01	505	-0.220	-0.316	0.177	0.288	331.914954	46.059715	-148.59	-1473.99
4	GUIDE	472665256	9.01	574	0.308	-0.024	0.101	0.158	332.808125	46.195041	-2193.13	-463.90
5	GUIDE	472525528	6.64	575	-0.221	0.048	0.074	0.127	331.551102	45.248694	2399.07	216.93
6	GUIDE	472654568	9.41	572	0.005	0.102	0.135	0.212	332.194449	45.063576	1556.75	1763.52
7	GUIDE	472659832	9.45	572	0.104	0.144	0.124	0.217	332.780399	46.098139	-1919.80	-227.23

2.4 Star Slots

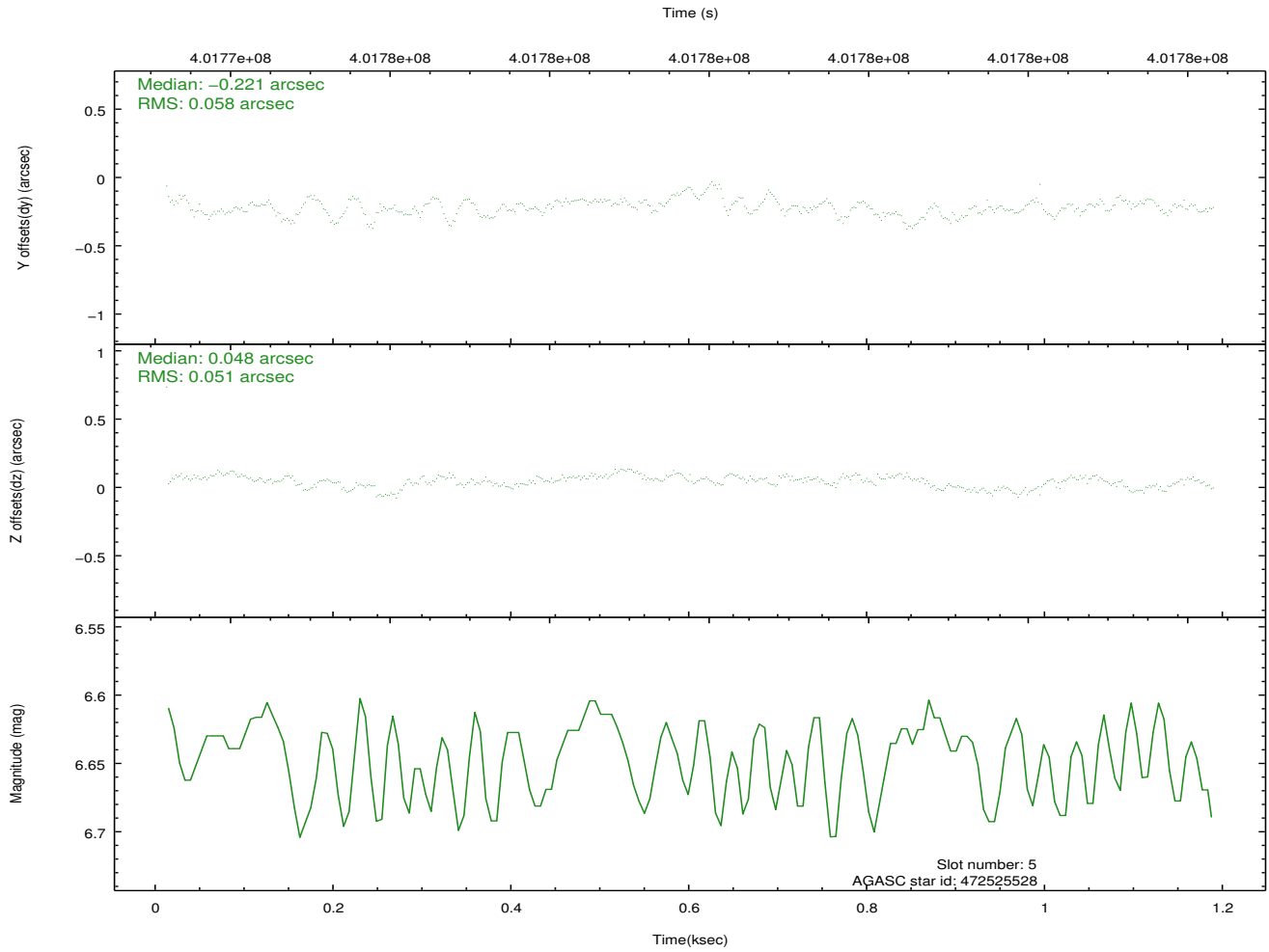
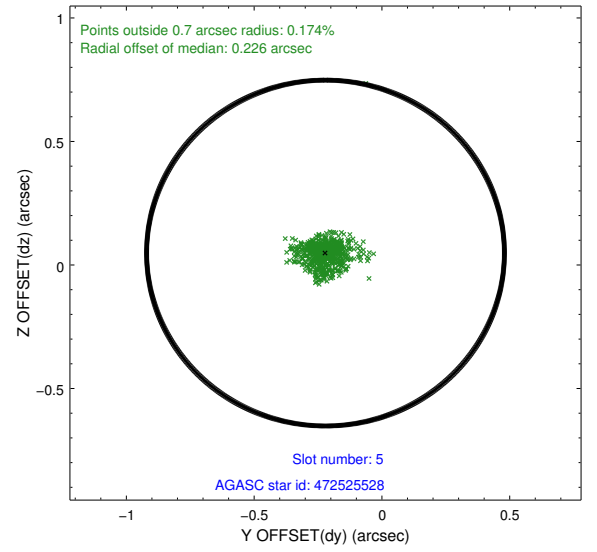
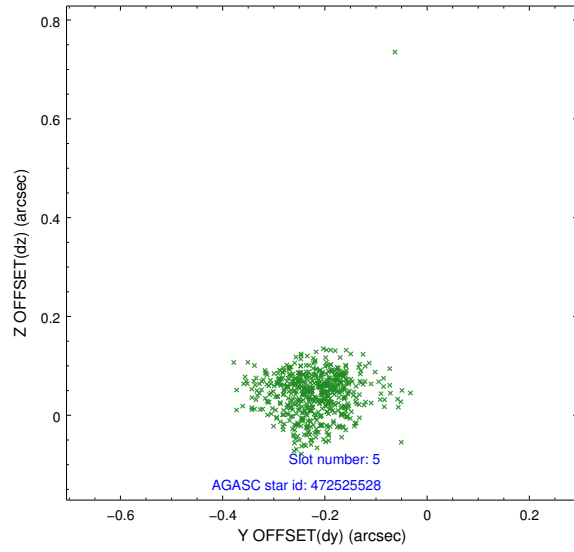
2.4.1 Slot 3



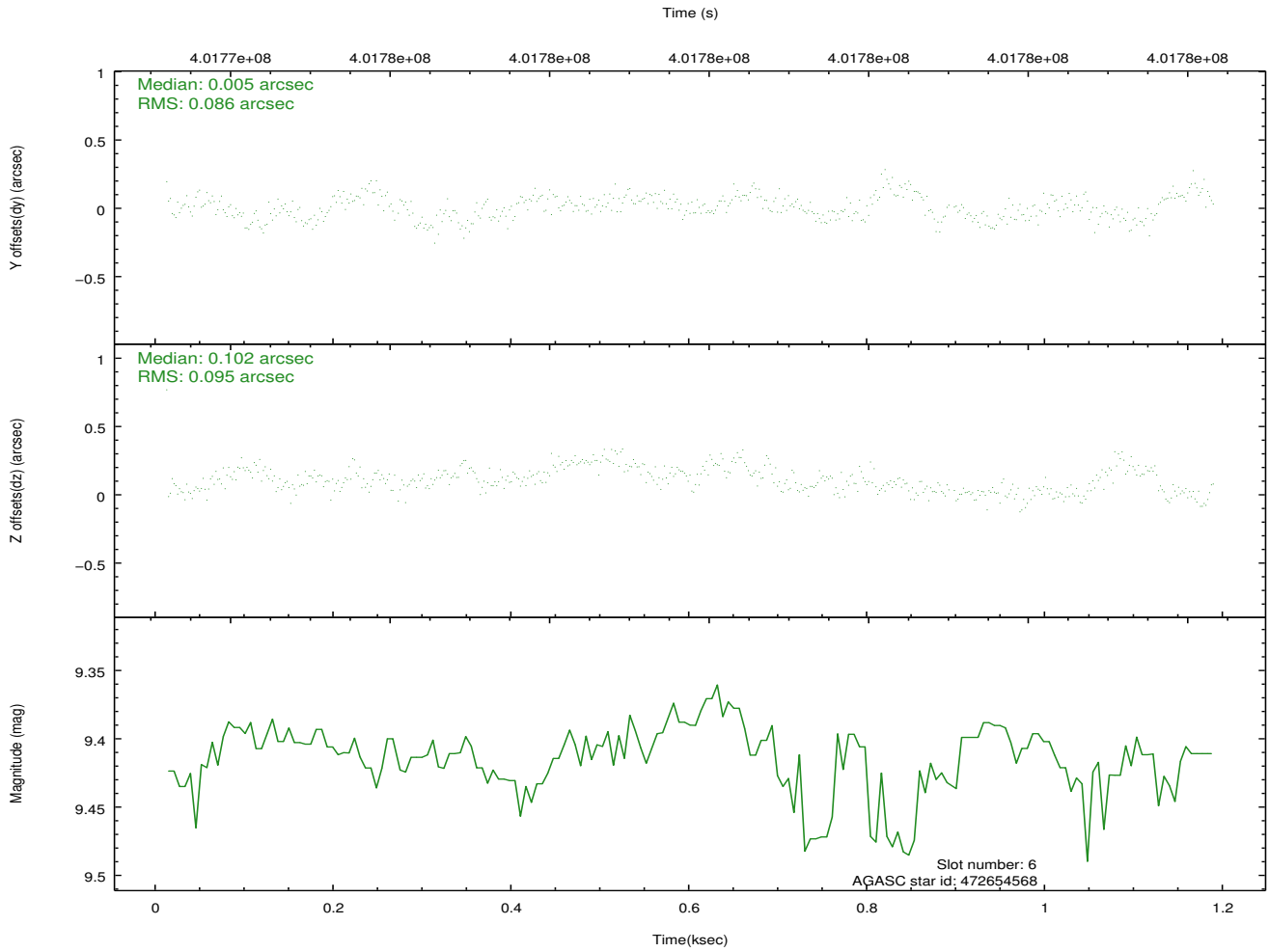
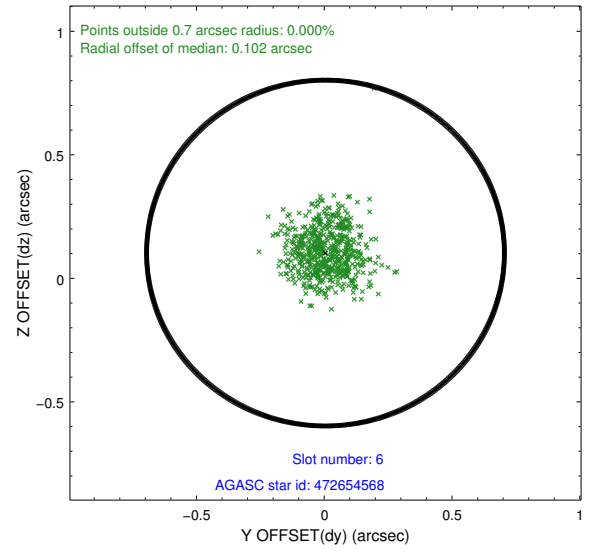
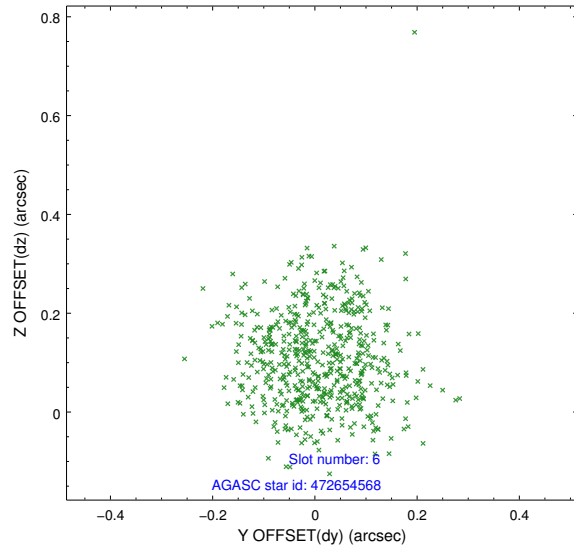
2.4.2 Slot 4



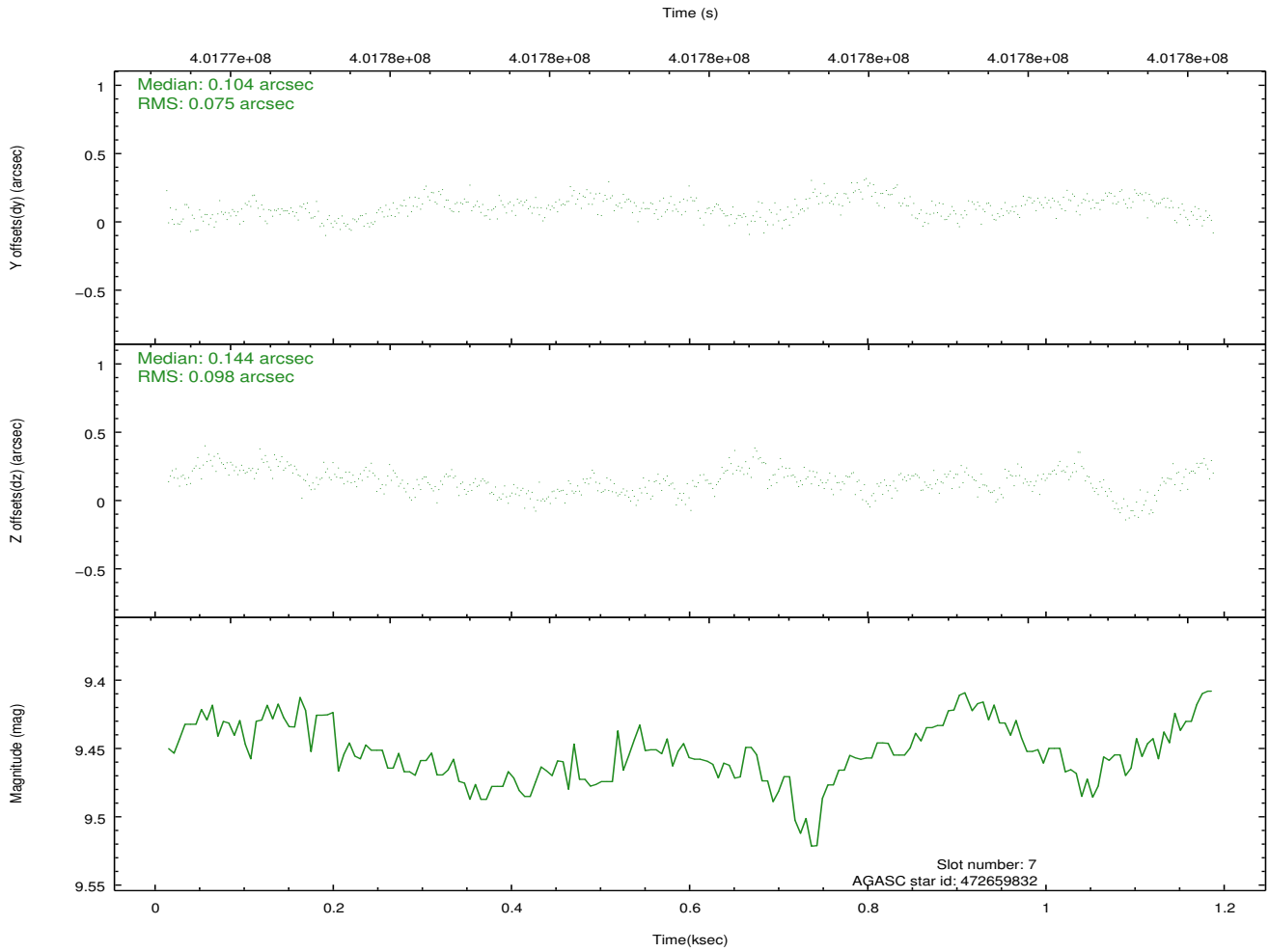
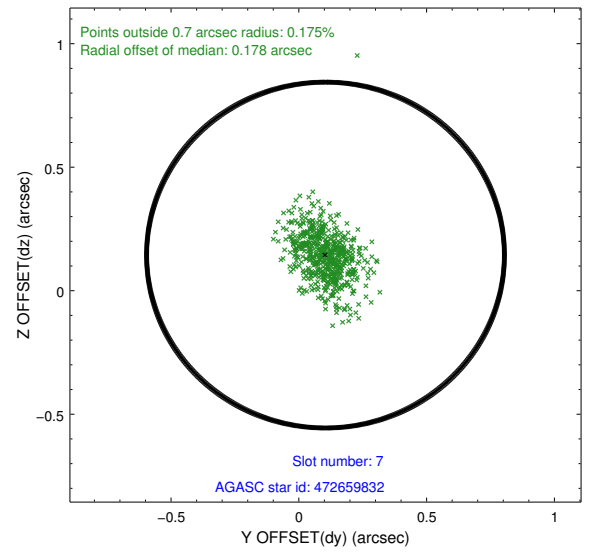
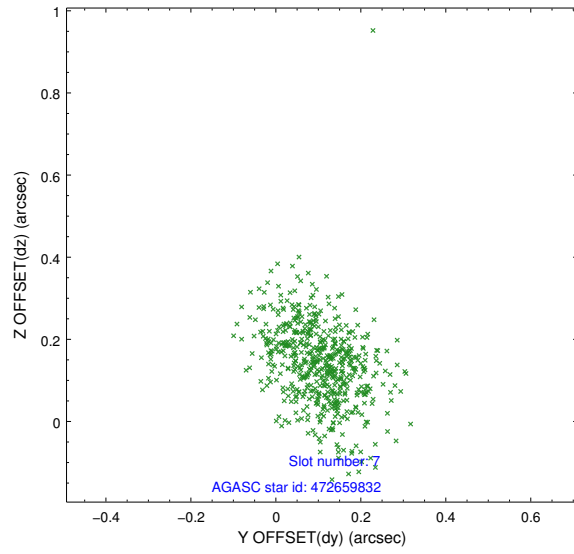
2.4.3 Slot 5



2.4.4 Slot 6

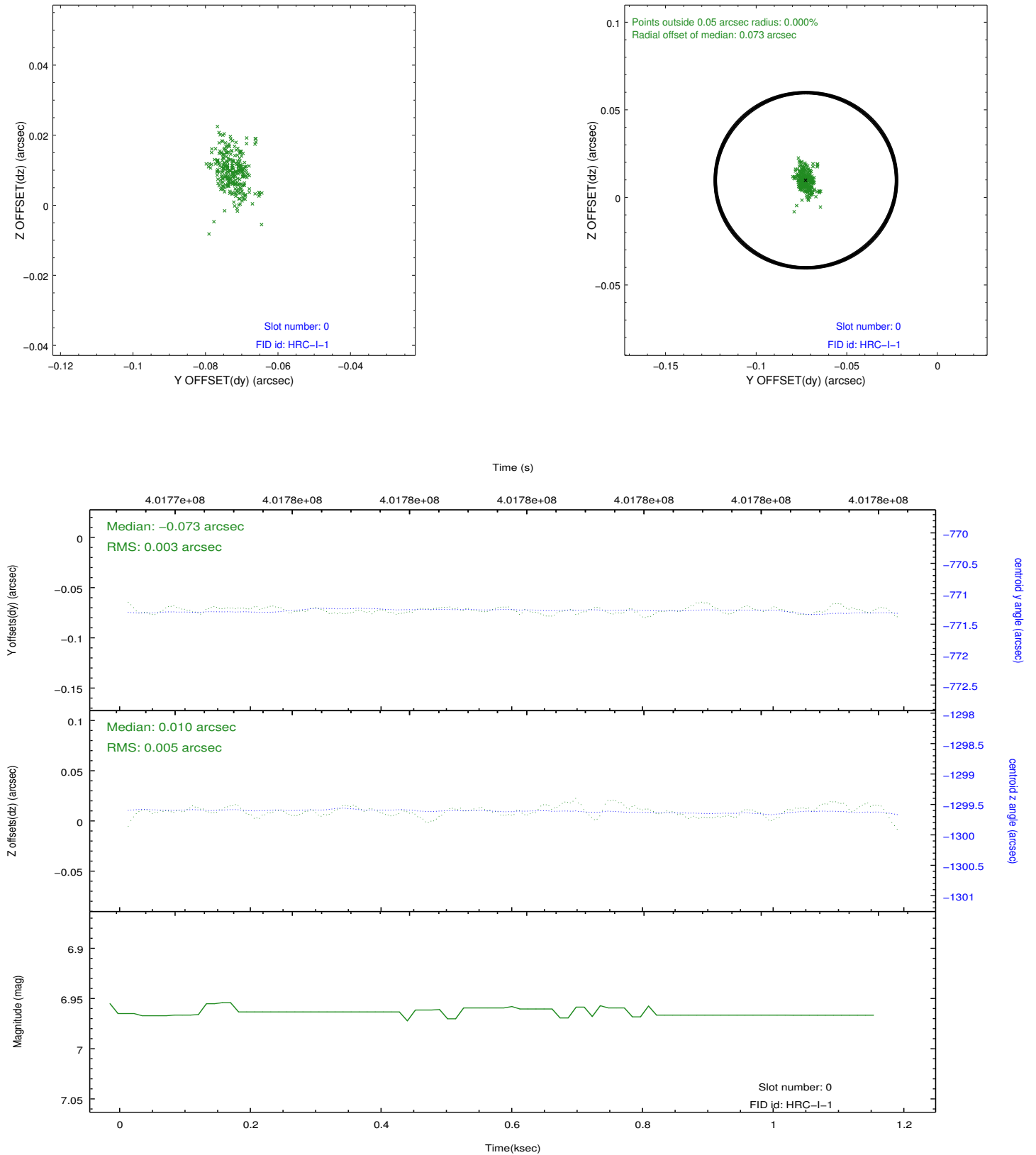


2.4.5 Slot 7

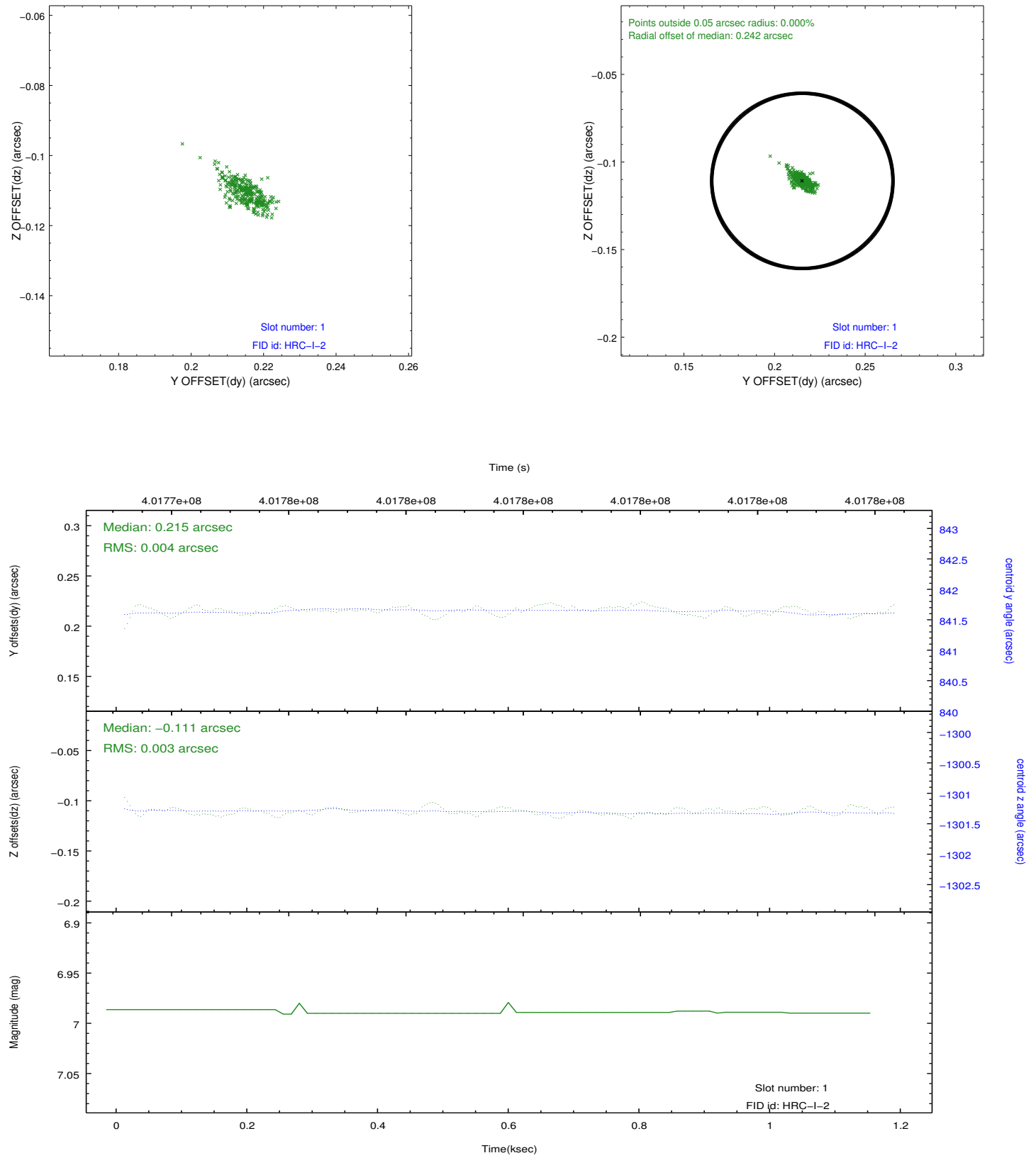


2.5 FID Slots

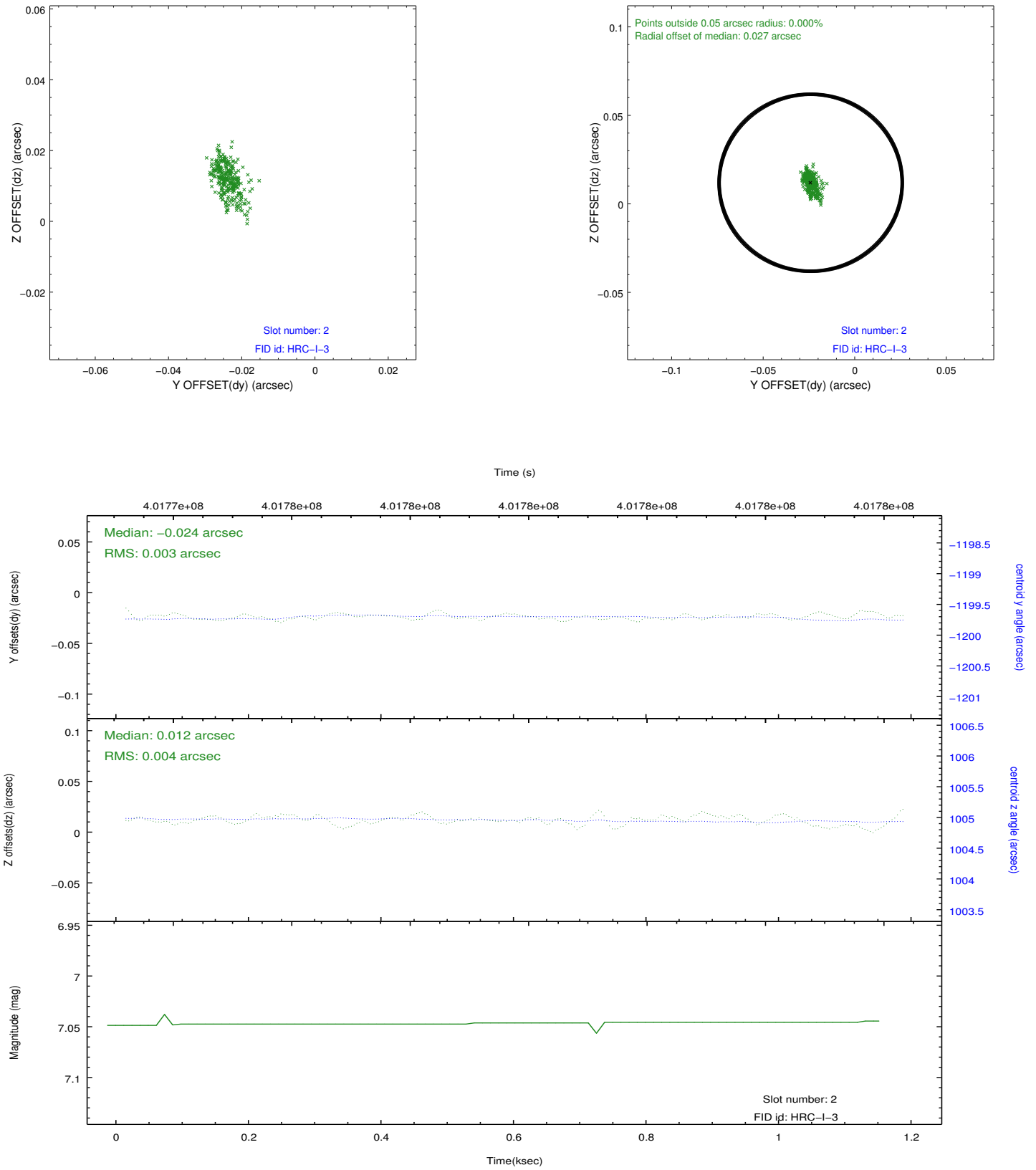
2.5.1 Slot 0



2.5.2 Slot 1



2.5.3 Slot 2



A Summary

A.1 Status

V&V Scientist	Beth Sundheim
V&V Date (YYYY-MM-DD)	2012.07.20
V&V Edition	1
V&V Disposition and Status	OK
V&V Charge Time	1.1759313103557

A.2 Comments