

V&V Reference Report

L2 ASCDS Version : 8.4.4

Observation 10657 - L2 Version 2
Chandra X-Ray Center

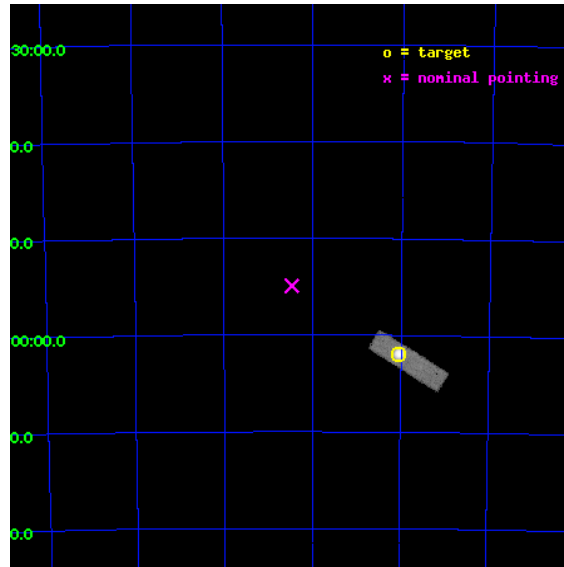
L2 Processing Date : Jun 1 2012

Contents

1	Front	2
2	OBI	3
2.1	OBI	3
2.1.1	Images	3
2.1.2	Bias	3
2.1.3	Parameters	4
2.1.4	Events	4
2.2	Compared Parameters	5
2.3	Aspect	6
2.4	Star Slots	9
2.4.1	Slot 3	9
2.4.2	Slot 4	10
2.4.3	Slot 5	11
2.4.4	Slot 6	12
2.4.5	Slot 7	13
2.5	FID Slots	14
2.5.1	Slot 0	14
2.5.2	Slot 1	15
2.5.3	Slot 2	16
A	Summary	17
A.1	Status	17
A.2	Comments	17

1 Front

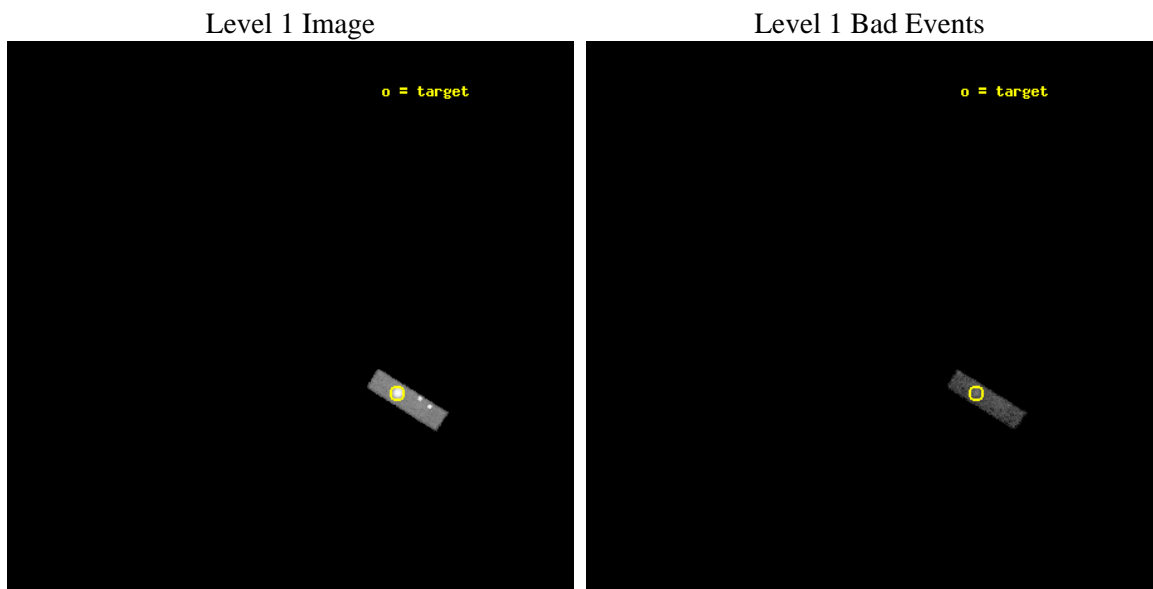
seq_num	590496	Sequence number
obs_id	10657	Observation id
title	AO-10 Calibration Observations of E0102-72	Proposal title
observer	Dr. CXC Calibration	Principal investigator
object	E0102-72[S1,-120,13.29,0,0]	Source name
dtcycle	0	
cycle	P	events from which exps? Prim/Second/Both
ra_targ	16.01	Observer's specified target RA [deg]
dec_targ	-72.032028	Observer's specified target Dec [deg]
ra_nom	16.615950364826	Nominal RA [deg]
dec_nom	-71.915330211412	Nominal Dec [deg]
roll_nom	211.91892248391	Nominal Roll [deg]
revision	2	Processing version of data
ontime	8028.0001196861	Sum of GTIs [s]
livetime	7636.2599825798	Livetime [s]
ontime5	8028.0001196861	Sum of GTIs [s]
l2events	47090	Number of level 2 events



2 OBI

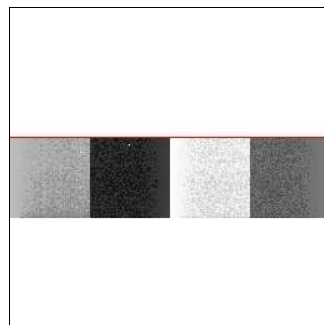
2.1 OBI

2.1.1 Images



2.1.2 Bias

Chip 5



2.1.3 Parameters

obi_num	0	Obi number	sched_exp_time	8000.000000	[s] Scheduled observation exposure time
ascdsver	8.4.4	Processing system revision	ontime	8028.0001196861	Sum of GTIs [s]
caldsver	4.4.9	 	ontime5	8028.0001196861	Sum of GTIs [s]
date	2012-06-01T23:41:36	Date and time of file creation	l1events	74187	Number of level 1 events
revision	2	Processing version of data			

2.1.4 Events

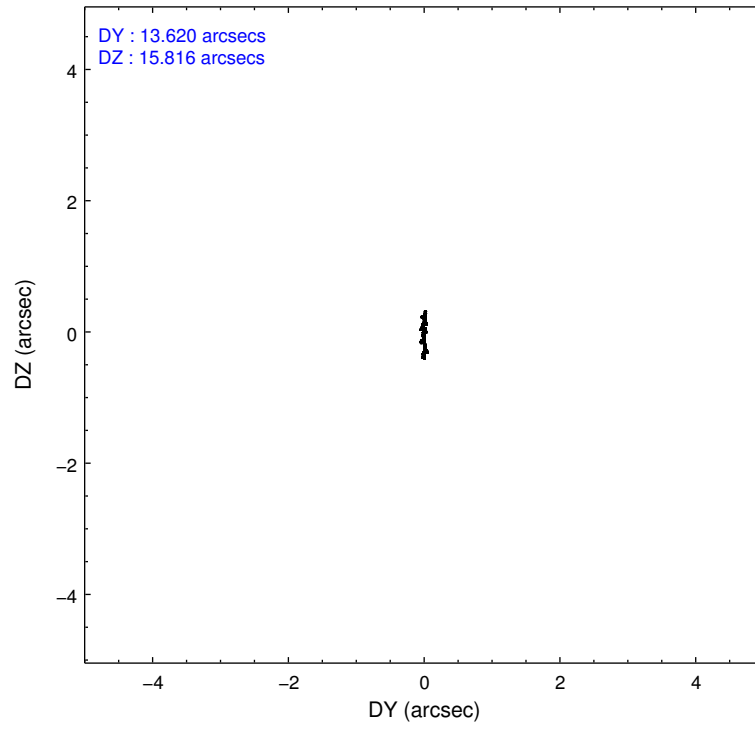
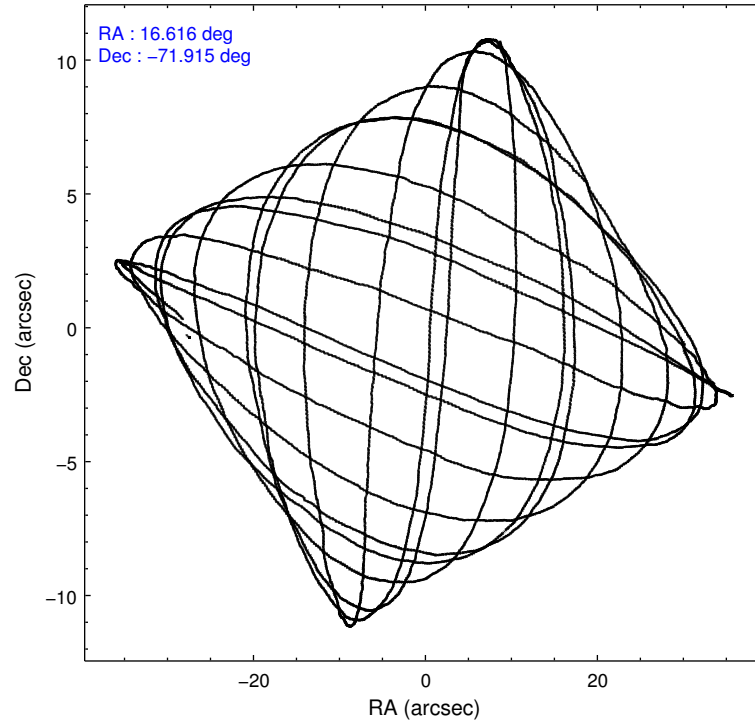
	ccd 5
level 1 events	74187
rejected events	10011
rejected %	13%

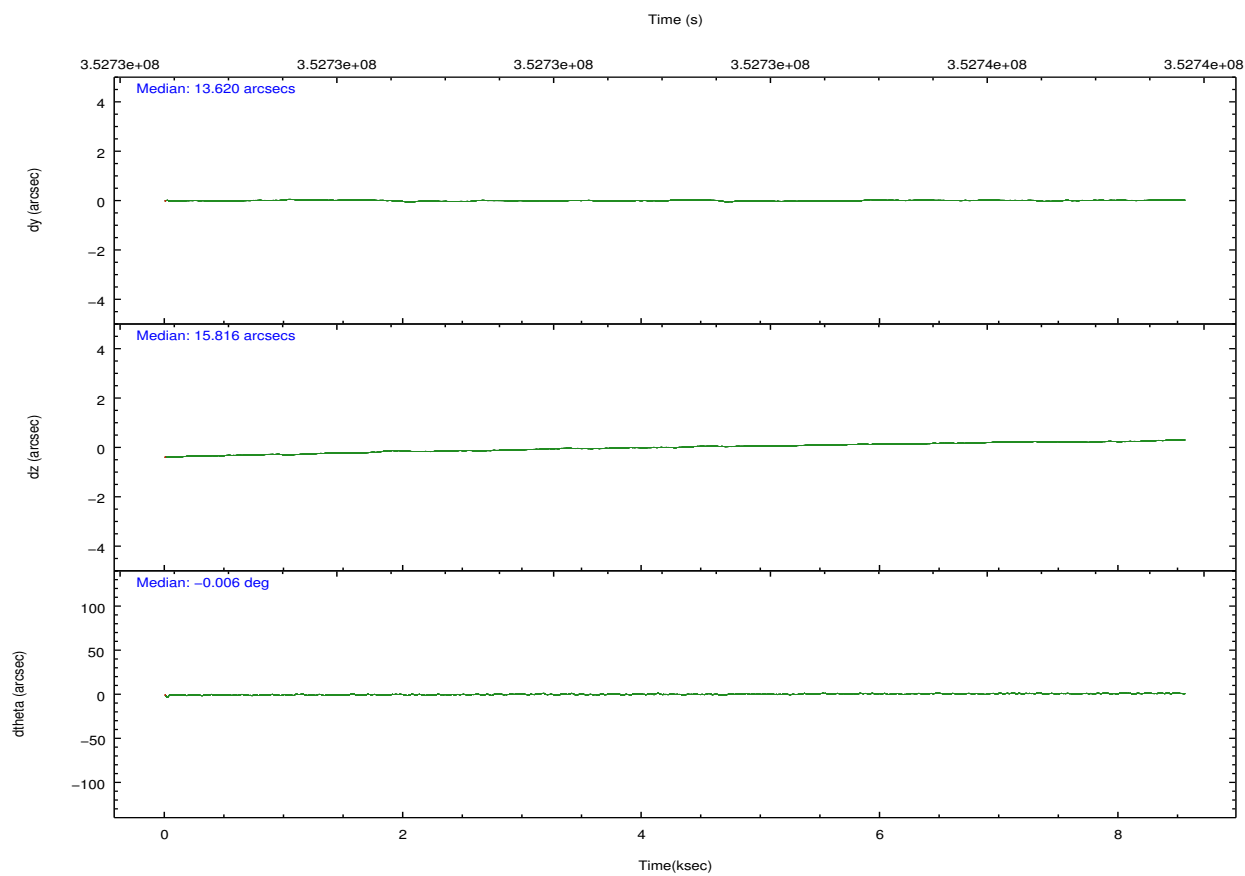
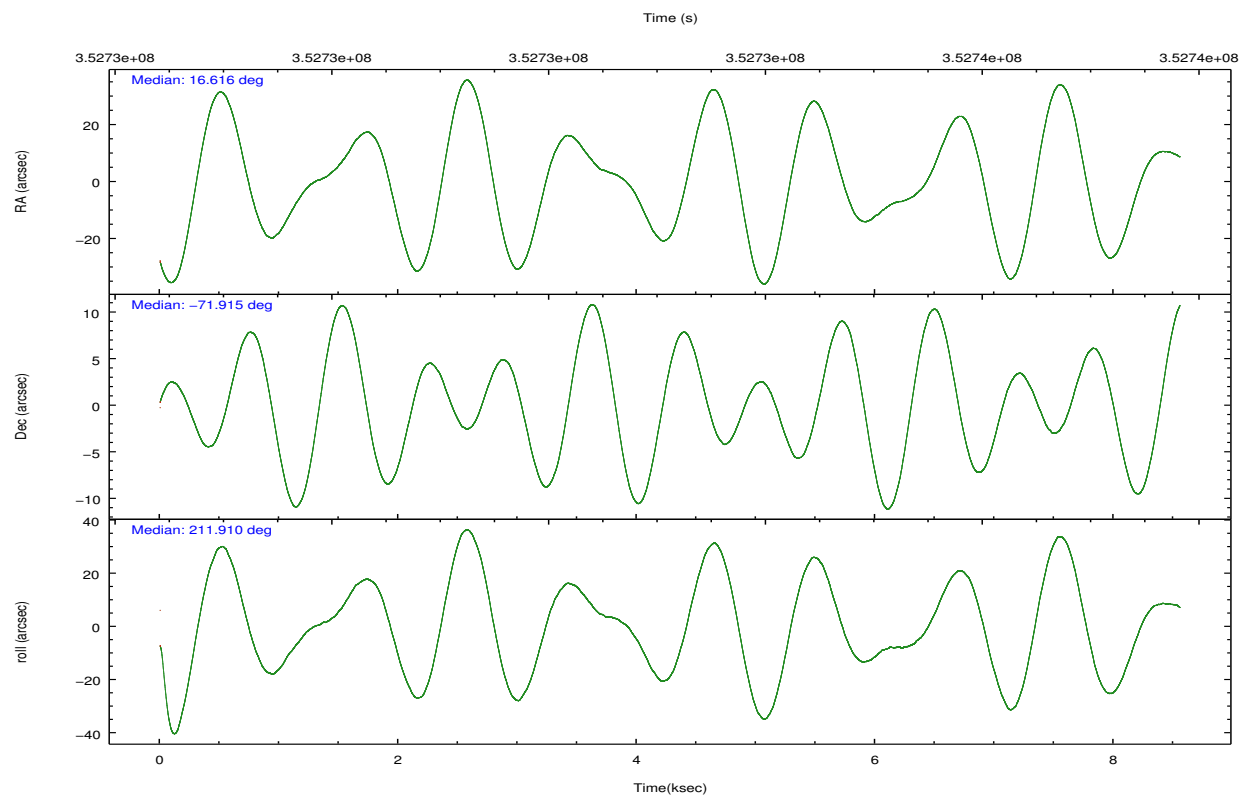
	ccd 5
grade 0 events	34011
	45%
grade 1 events	104
	0%
grade 2 events	13686
	18%
grade 3 events	4292
	5%
grade 4 events	4167
	5%
grade 5 events	2224
	2%
grade 6 events	8029
	10%
grade 7 events	7674
	10%

2.2 Compared Parameters

Parameter	Planned	Actual	Parameter	Planned	Actual
Instrument	ACIS	ACIS	Obspar format version number	7	7
Detector	ACIS-5	ACIS-5	Obspar file type	PREDICTED	ACTUAL
Grating	NONE	NONE	Obspar update status	NONE	UPDATED
Data mode	VFAINT	VFAINT	Number of optional ACIS chips dropped	0	0
Observation mode	POINTING	POINTING	On-chip summing requested	N	N
[deg] Pointing RA	16.656396	16.61595036482563	Subarray requested	CUSTOM	1/4
[deg] Pointing Dec	-71.891022	-71.91533021141183	Subarray start row	356	356
[deg] Pointing Roll	211.800712	211.9189224839146	Subarray row count	256	256
[s] Window start time (MET)	344476865.184000	344476865.184000	Alternating exposures requested	N	N
[s] Window stop time (MET)	357436866.184000	357436866.184000	[s] Primary exposure time	0.000000	0.8
[mm] SIM focus pos	-0.684267	-0.6828225247311905			
[mm] SIM defocus	0	0.001444936568705701			
[mm] SIM translation stage pos	-190.132523	-190.1425803651734			
[mm] SIM translation stage offset	0	0.01005778216563158			
[s] Observation start time (MET)	352729394.184000	352728650.02384			
Observation start date	2009-03-06T12:22:08	2009-03-06T12:10:50			
[s] Observation end time (MET)	352737394.184000	352737528.06178			
Observation end date	2009-03-06T14:35:28	2009-03-06T14:38:48			
Read mode	TIMED	TIMED			

2.3 Aspect



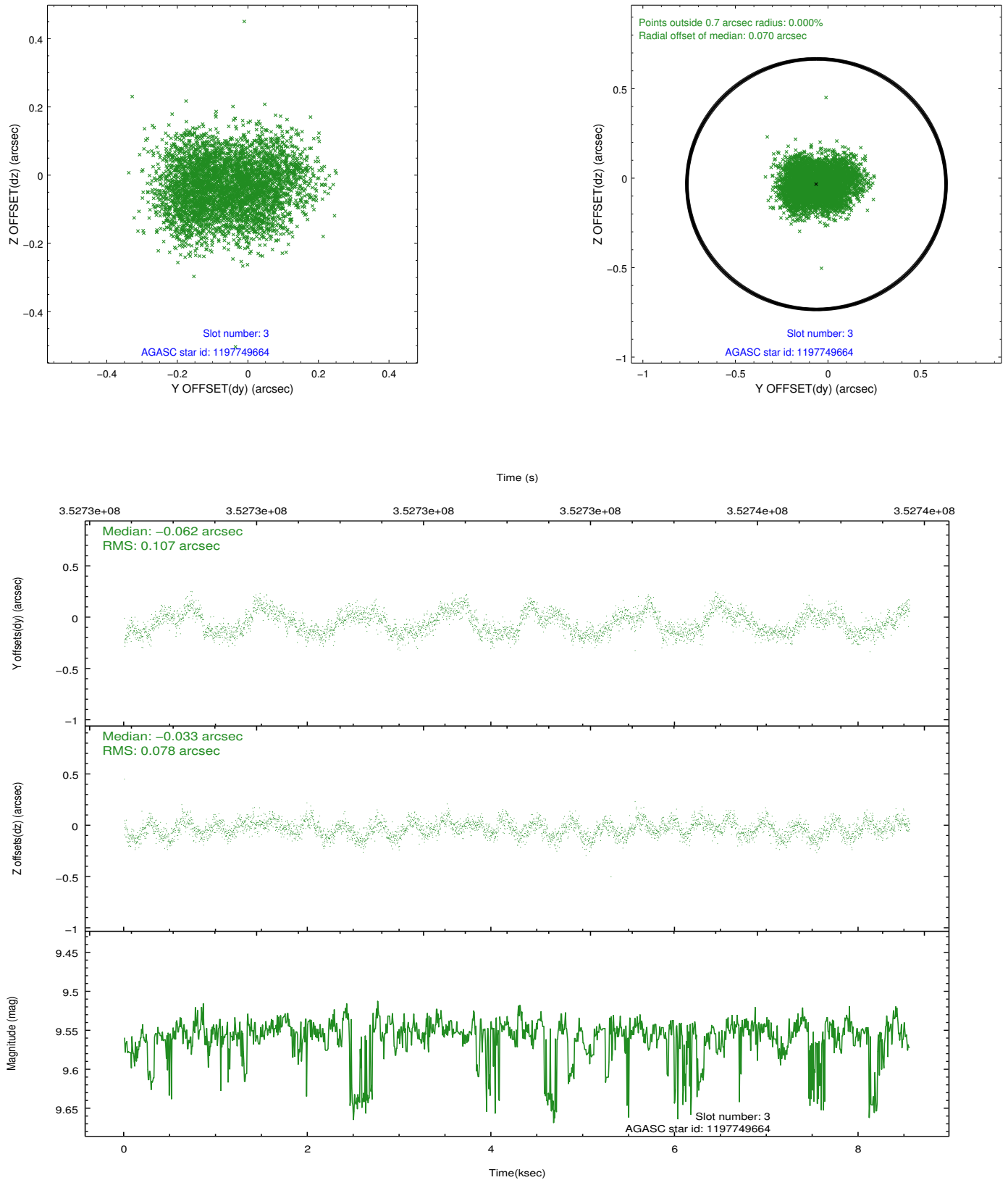


Slot Statistics

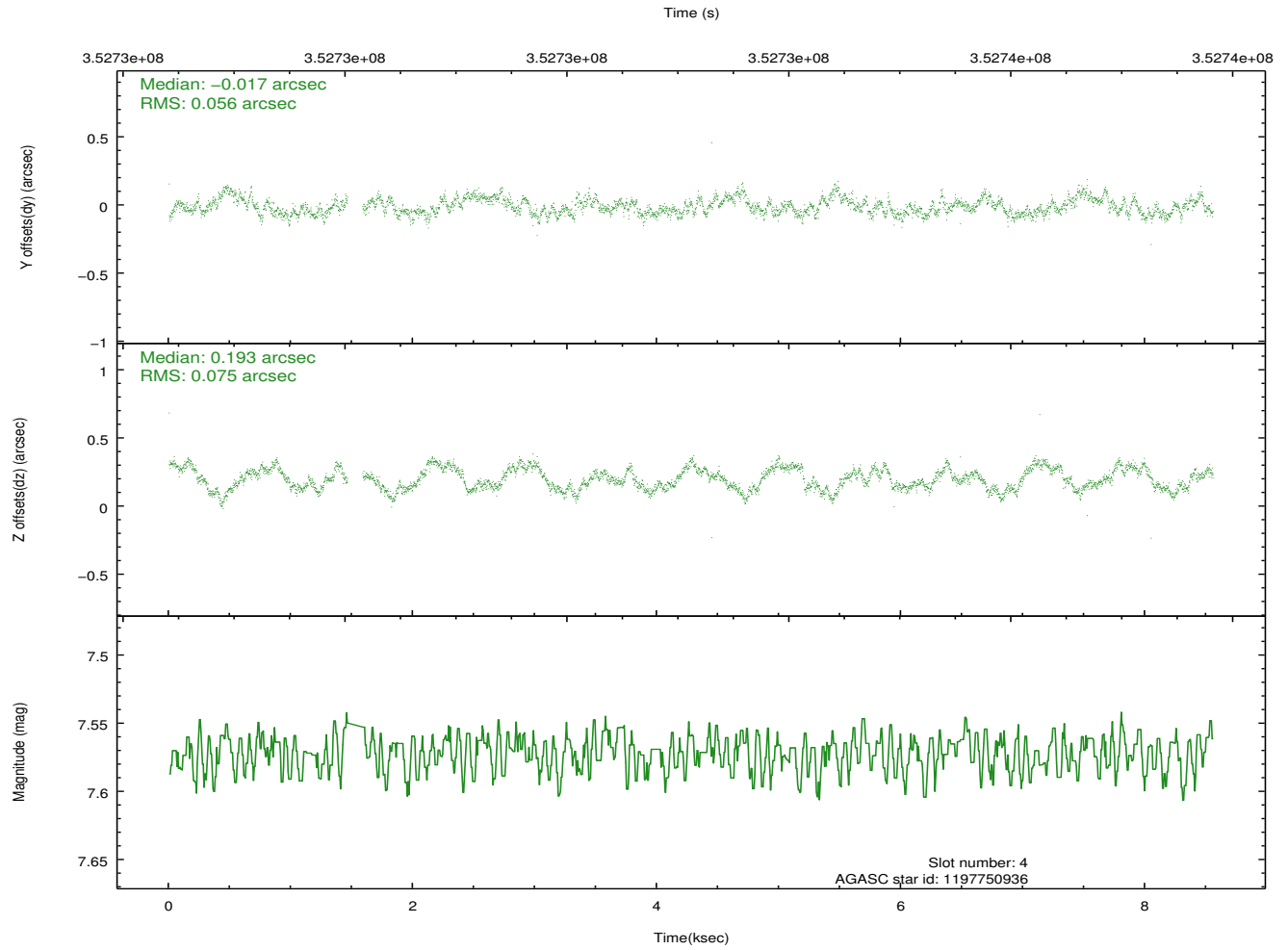
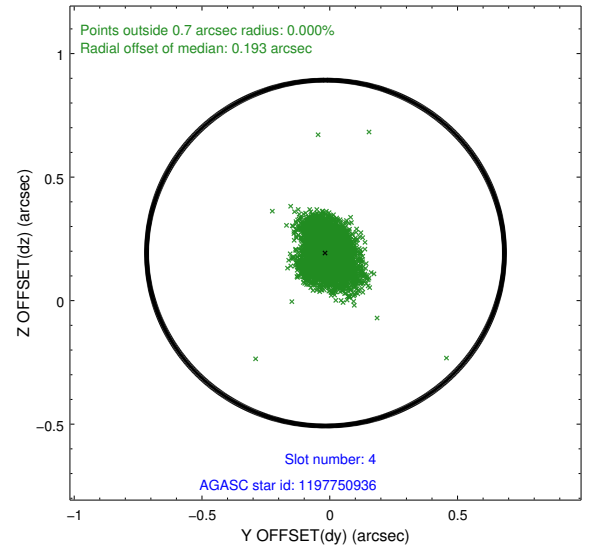
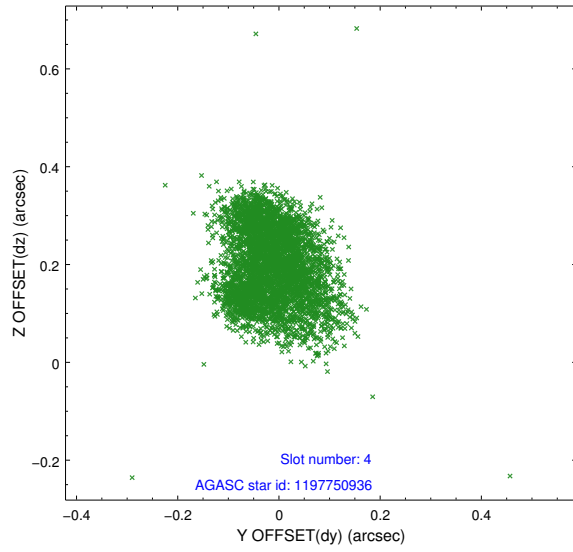
slot	status	id	mag	n_pts	med_dy	med_dz	dr1	dr2	ra	dec	mean_y	mean_z
0	FID	ACIS-S-1	7.03	2087	0.088	-0.088	0.012	0.023	0.000000	0.000000	929.59	-1732.86
1	FID	ACIS-S-5	7.05	2087	-0.161	0.047	0.007	0.012	0.000000	0.000000	-1819.31	164.14
2	FID	ACIS-S-6	7.16	2087	0.052	0.052	0.009	0.016	0.000000	0.000000	394.39	808.85
3	GUIDE	1197749664	9.55	4159	-0.062	-0.033	0.144	0.217	15.809015	-72.366369	1690.38	973.44
4	GUIDE	1197750936	7.57	4113	-0.017	0.193	0.100	0.151	15.387940	-71.549550	589.25	-1792.34
5	GUIDE	1197884536	8.49	4171	0.016	-0.154	0.088	0.136	17.160729	-71.835289	-585.21	129.32
6	GUIDE	1197884712	8.29	4170	-0.047	-0.029	0.058	0.098	16.087398	-72.252690	1218.19	780.54
7	GUIDE	1197885104	9.33	4158	0.101	0.026	0.135	0.203	17.845067	-72.189368	-538.62	1614.17

2.4 Star Slots

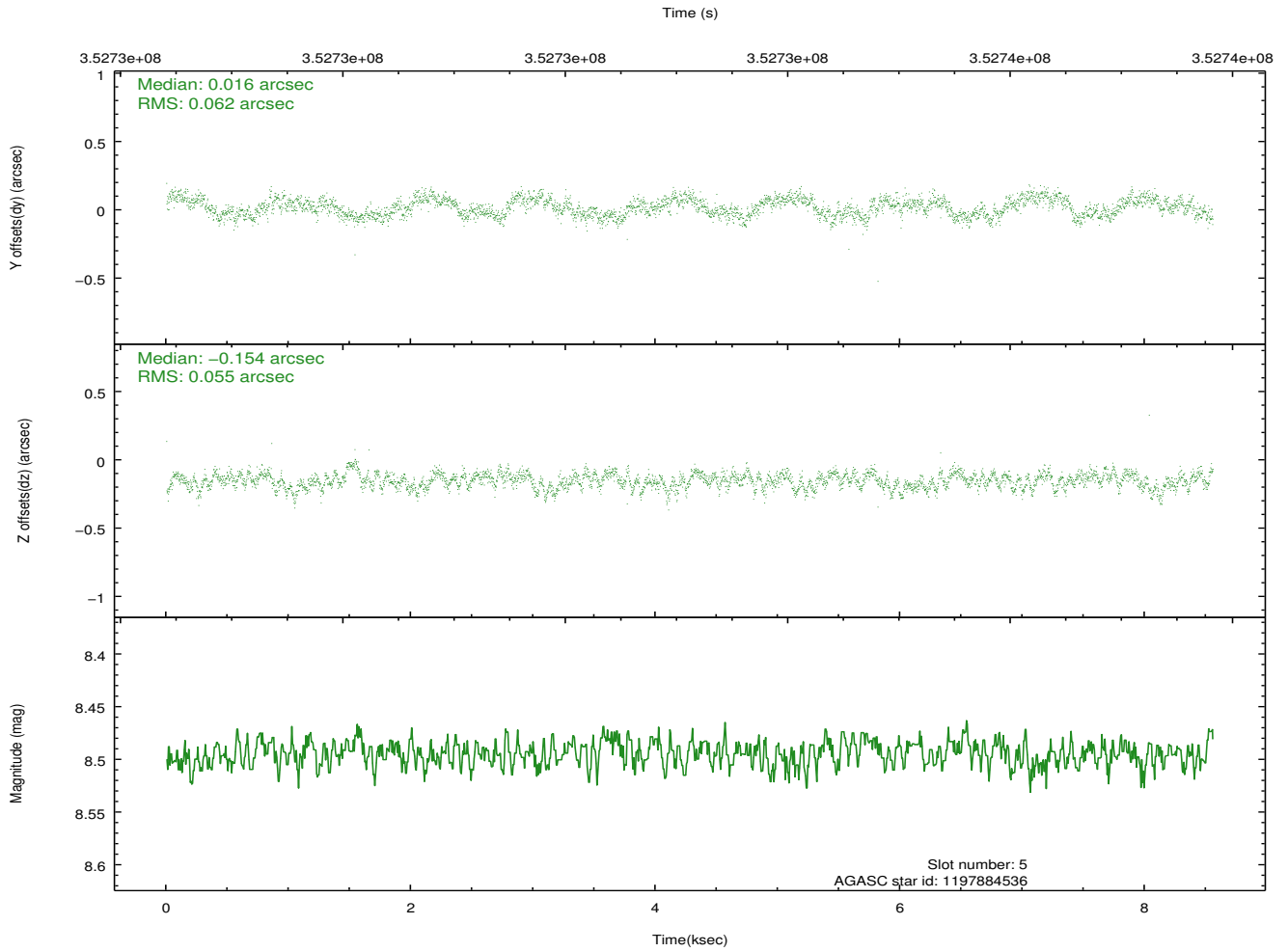
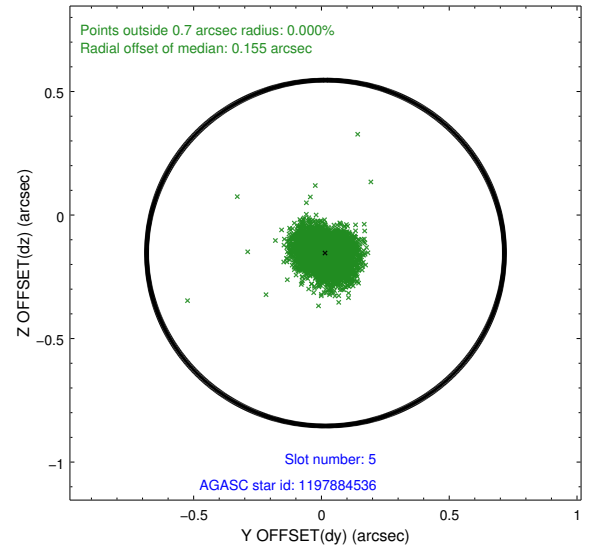
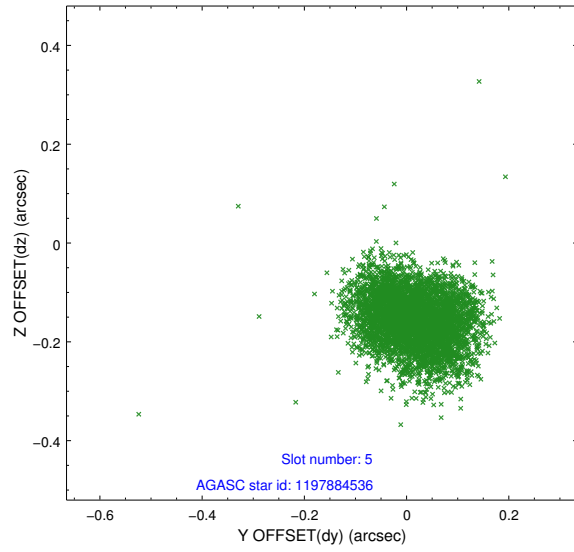
2.4.1 Slot 3



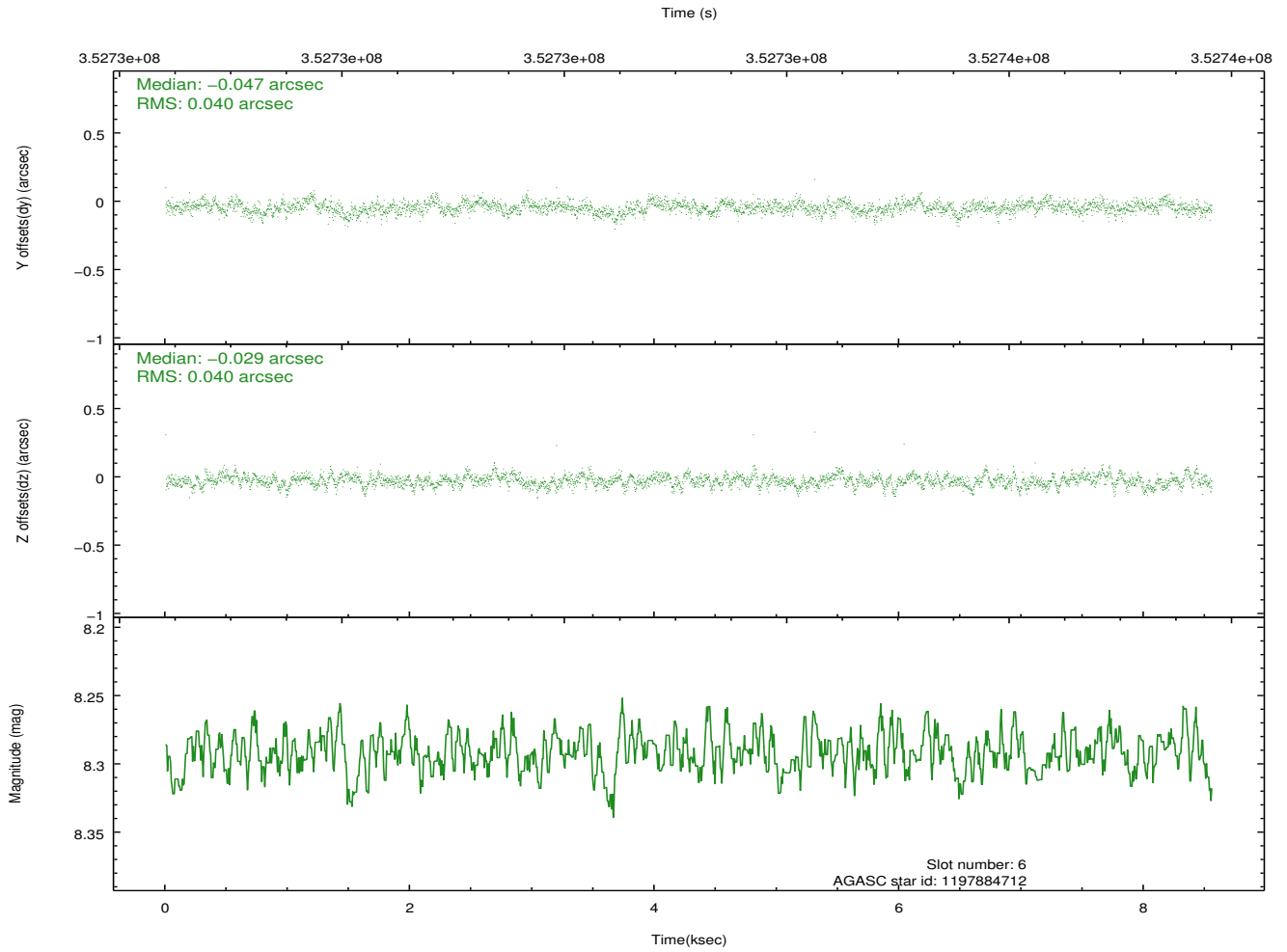
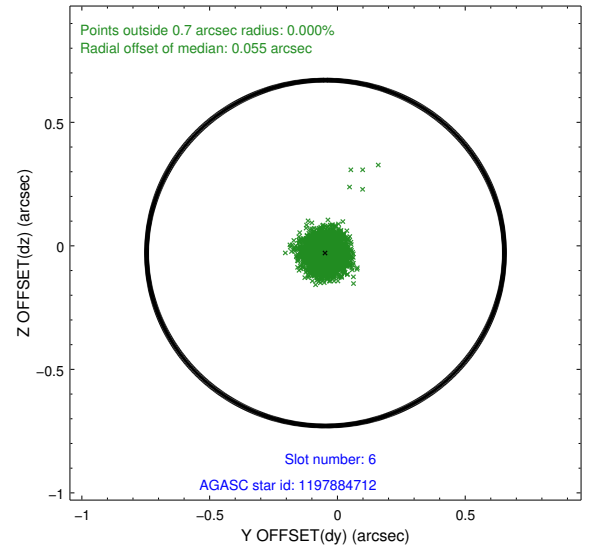
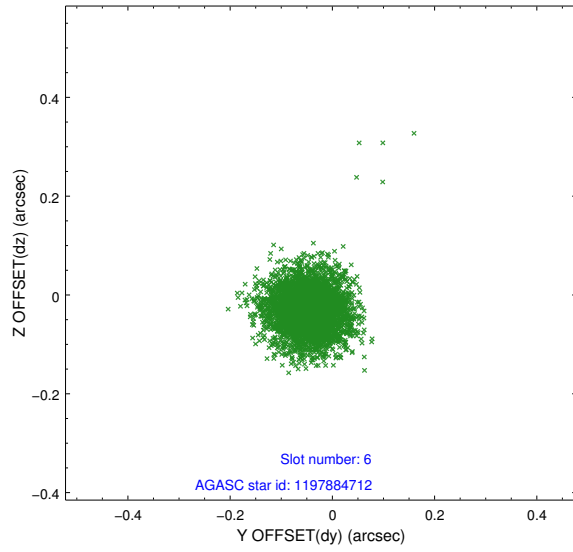
2.4.2 Slot 4



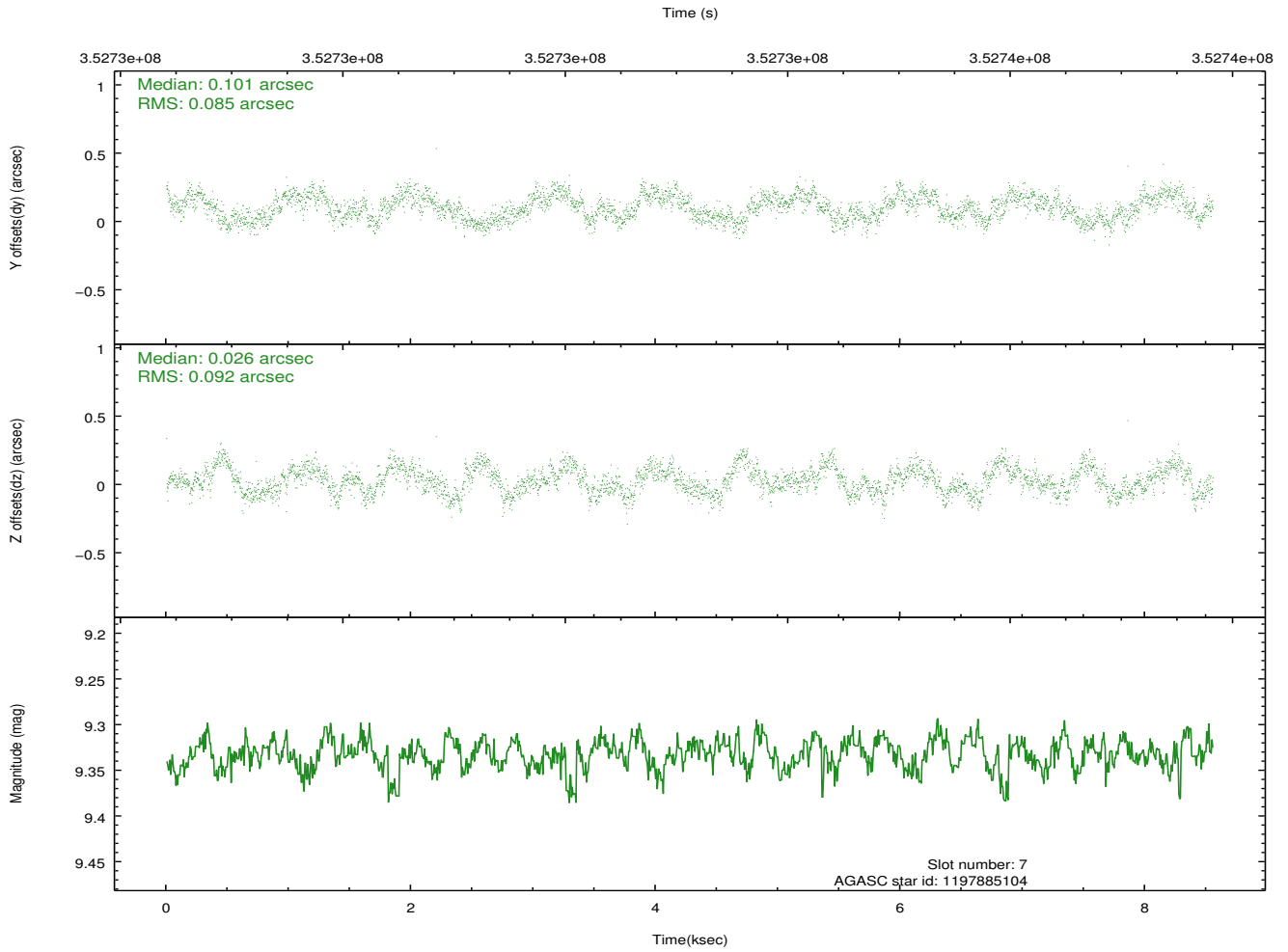
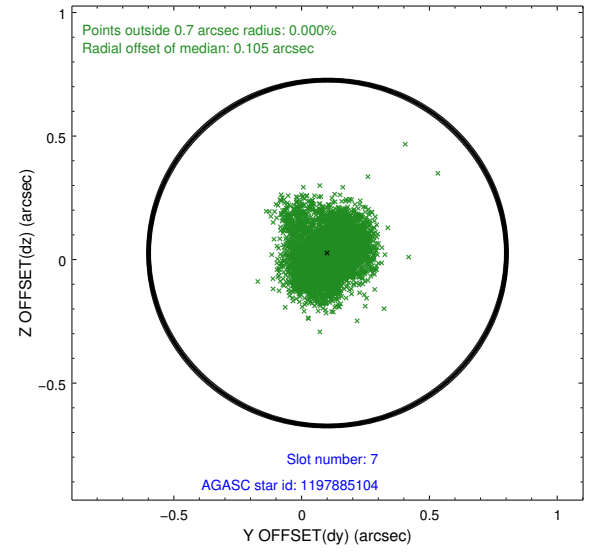
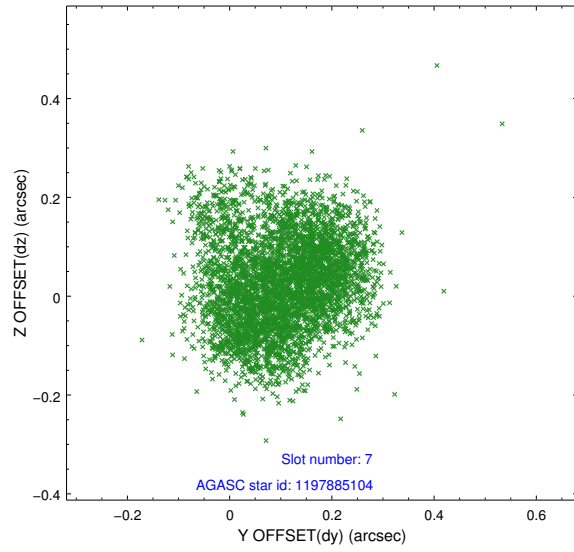
2.4.3 Slot 5



2.4.4 Slot 6

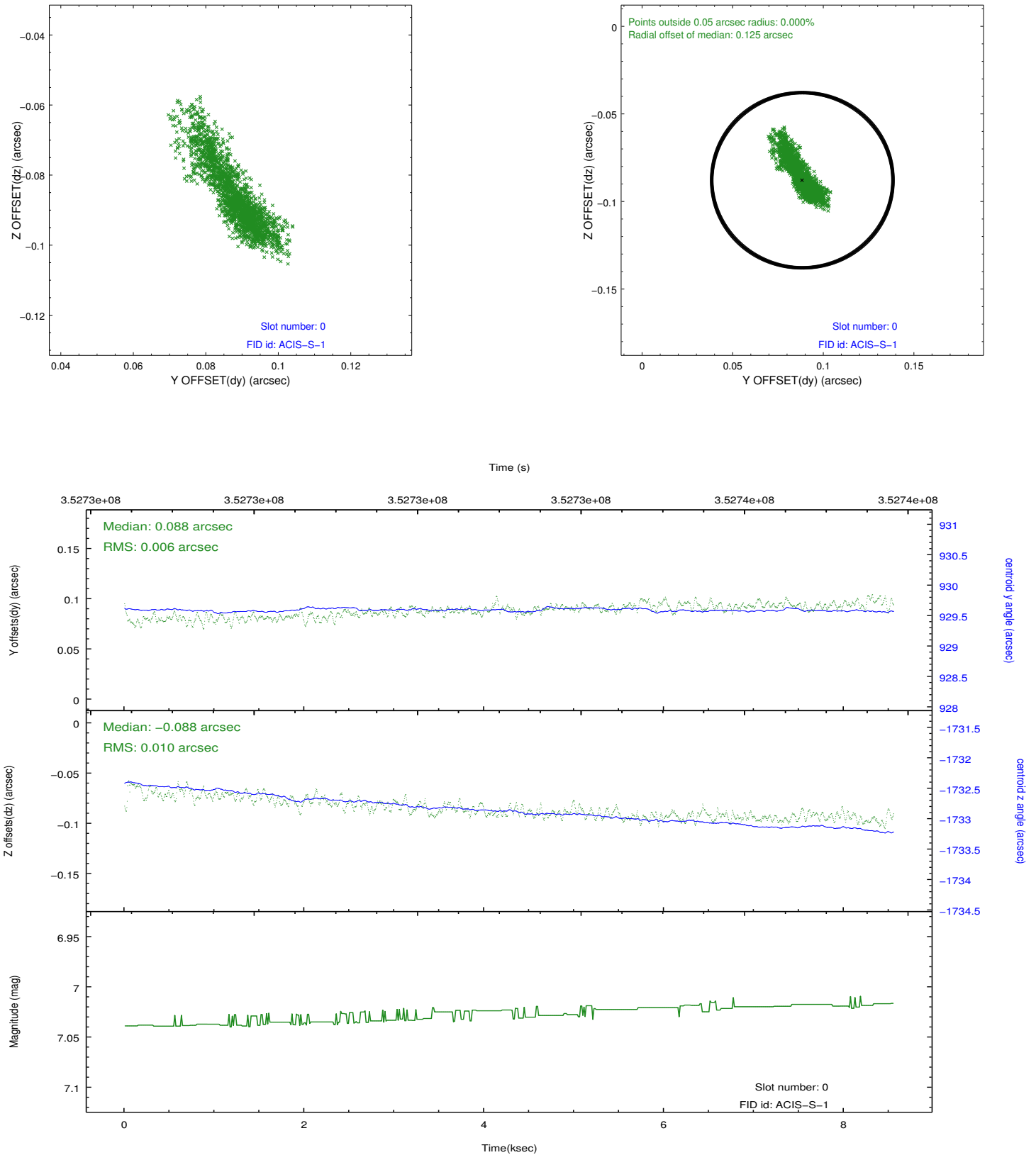


2.4.5 Slot 7

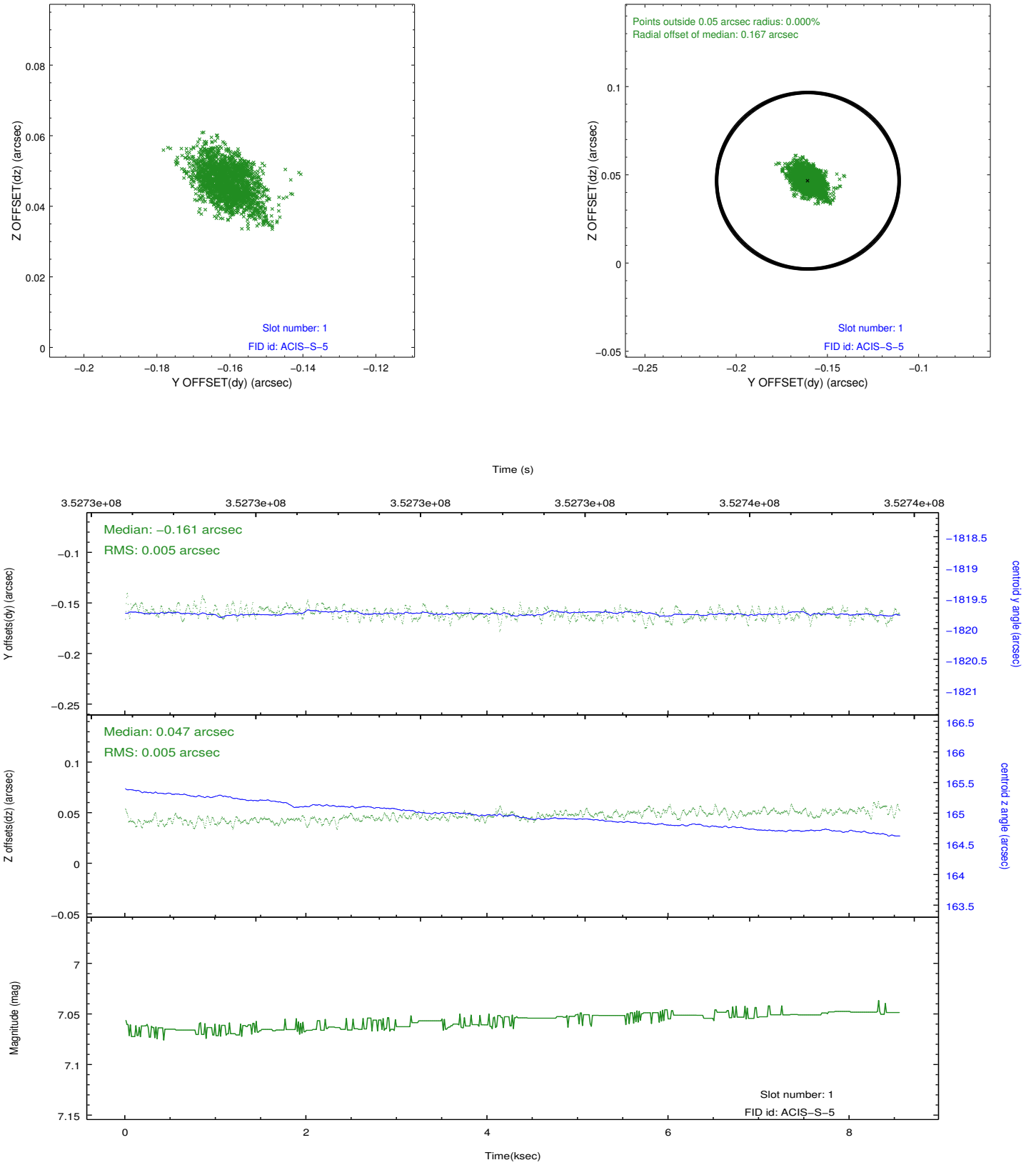


2.5 FID Slots

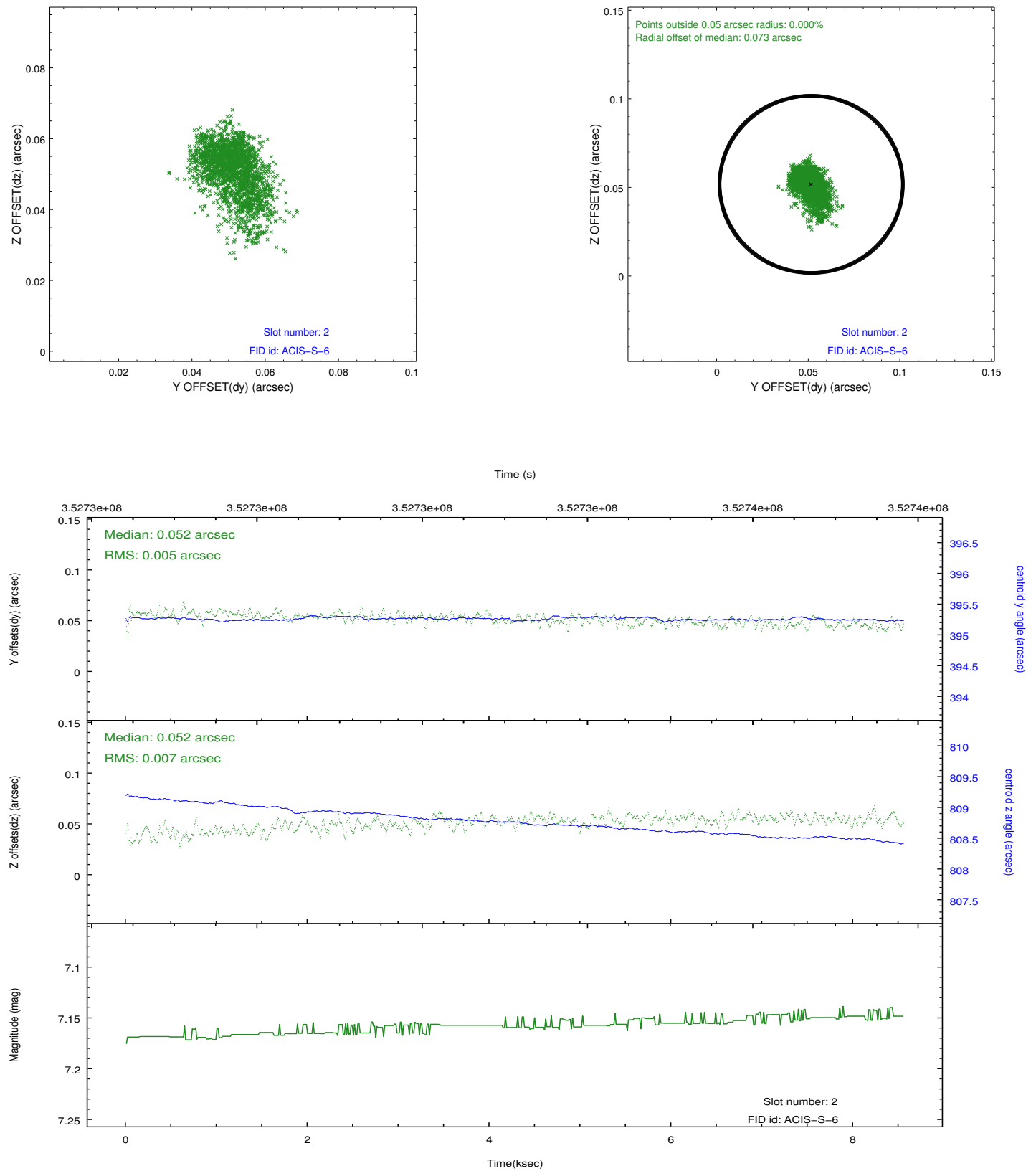
2.5.1 Slot 0



2.5.2 Slot 1



2.5.3 Slot 2



A Summary

A.1 Status

V&V Scientist	Jen Lauer
V&V Date (YYYY-MM-DD)	2012.06.06
V&V Edition	1
V&V Disposition and Status	OK
V&V Charge Time	8.02800011

A.2 Comments

Target is coonsiderably off-axis. Chip S1. Window constraint met.