

V&V Reference Report

L2 ASCDS Version : 8.4.5

Observation 10647 - L2 Version 2
Chandra X-Ray Center

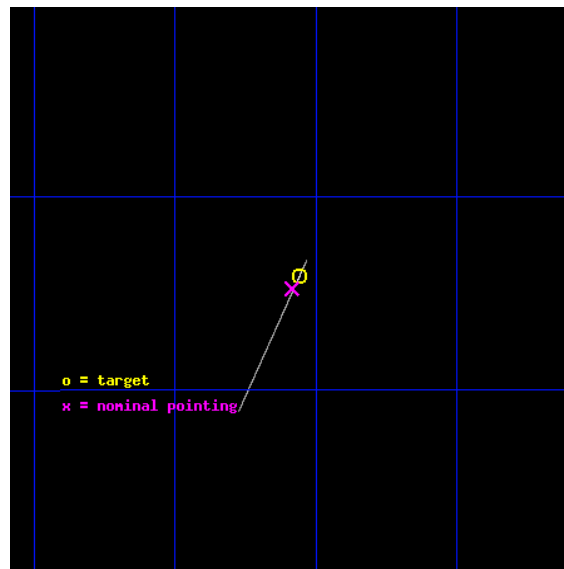
L2 Processing Date : Jun 8 2012

Contents

1	Front	2
2	OBI	3
2.1	OBI	3
2.1.1	Images	3
2.1.2	Bias	3
2.1.3	Parameters	4
2.1.4	Events	4
2.2	Compared Parameters	5
2.3	Aspect	6
2.4	Star Slots	9
2.4.1	Slot 3	9
2.4.2	Slot 4	10
2.4.3	Slot 5	11
2.4.4	Slot 6	12
2.4.5	Slot 7	13
2.5	FID Slots	14
2.5.1	Slot 0	14
2.5.2	Slot 1	15
2.5.3	Slot 2	16
A	Summary	17
A.1	Status	17
A.2	Comments	17

1 Front

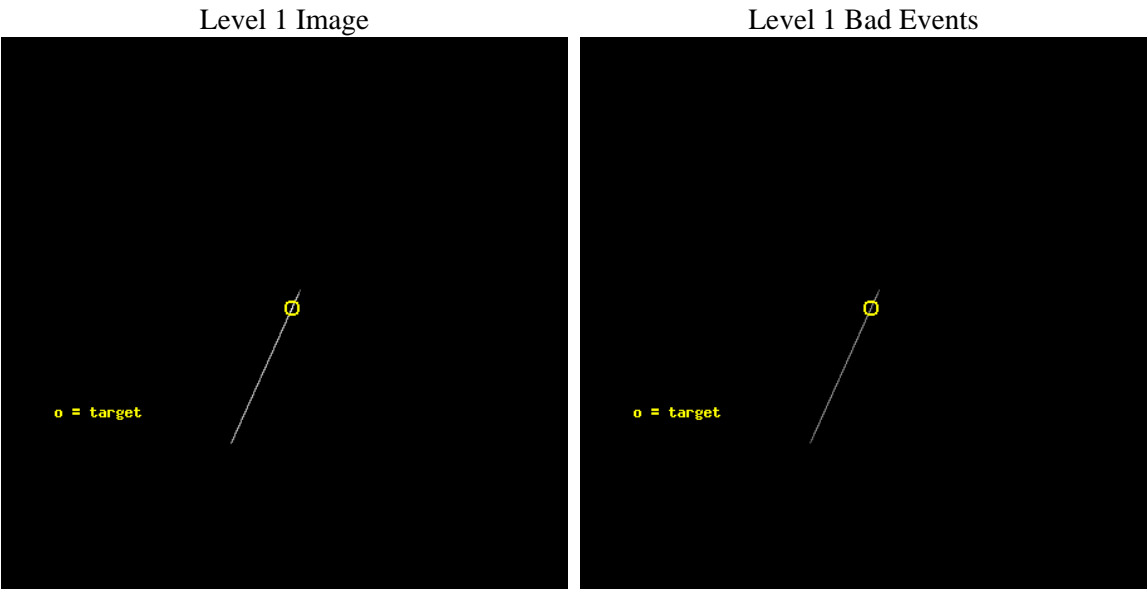
seq_num	590486	Sequence number
obs_id	10647	Observation id
title	AO-10 Observations of the Standard Candles Cas A and G21.5-09.	Pro
observer	Dr. CXC Calibration	Principal investigator
object	G21.5-09[S3,-120,1.0,0,0]	Source name
ra_targ	278.389583	Observer's specified target RA [deg]
dec_targ	-10.568528	Observer's specified target Dec [deg]
ra_nom	278.39631273548	Nominal RA [deg]
dec_nom	-10.579354582884	Nominal Dec [deg]
roll_nom	114.46649156154	Nominal Roll [deg]
revision	2	Processing version of data
ontime	10183.25	Sum of GTIs [s]
livetime	10143.471679688	Livetime [s]
ontime7	10183.25	Sum of GTIs [s]
l2events	66838	Number of level 2 events



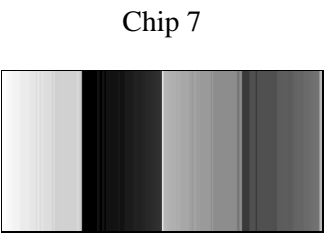
2 OBI

2.1 OBI

2.1.1 Images



2.1.2 Bias



2.1.3 Parameters

obi_num	0	Obi number	sched_exp_time	10002.090000	[s] Scheduled observation exposure time
ascdsver	8.4.5	Processing system revision	ontime	10183.25	Sum of GTIs [s]
caldsver	4.4.10	 	ontime7	10183.25	Sum of GTIs [s]
date	2012-06-08T06:21:47	Date and time of file creation	l1events	83278	Number of level 1 events
revision	2	Processing version of data			

2.1.4 Events

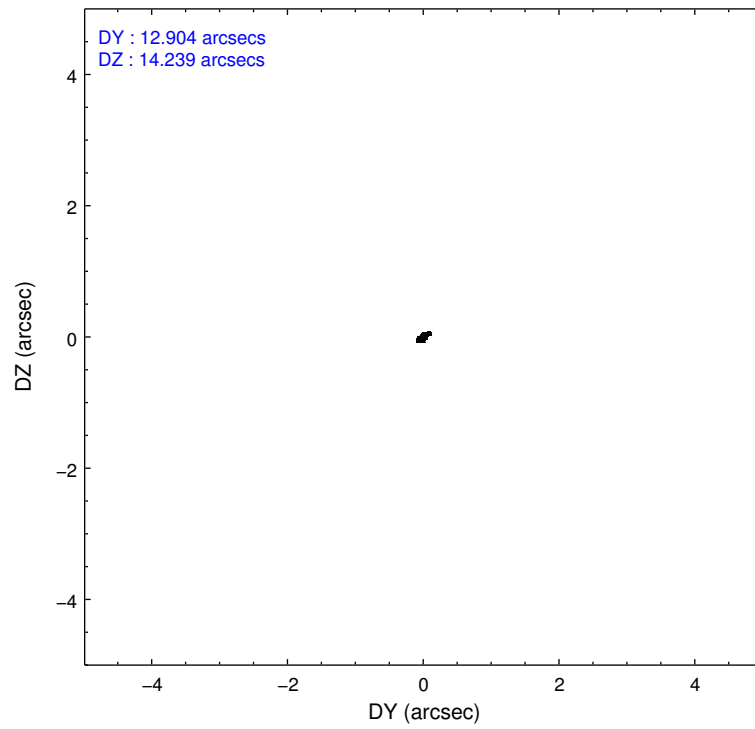
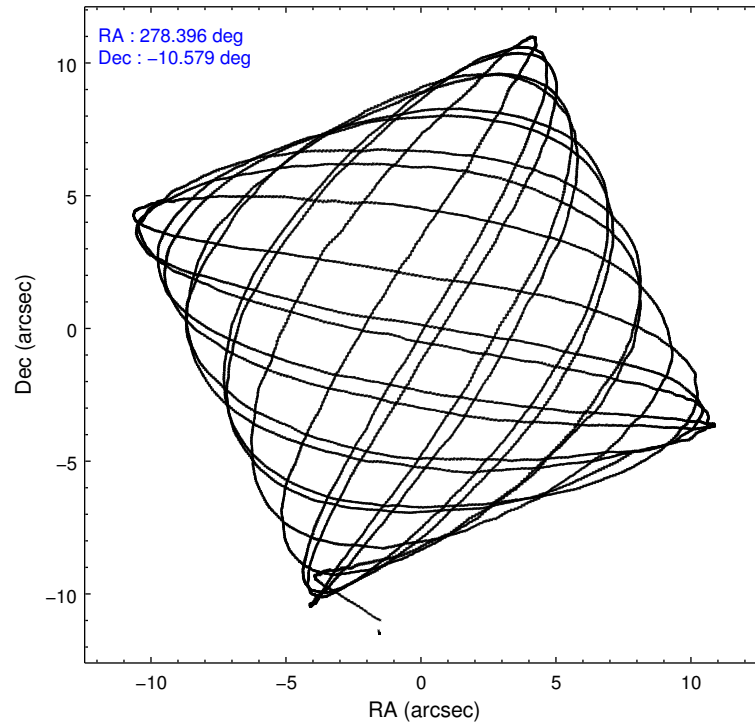
	ccd 7
level 1 events	83278
rejected events	13999
rejected %	16%

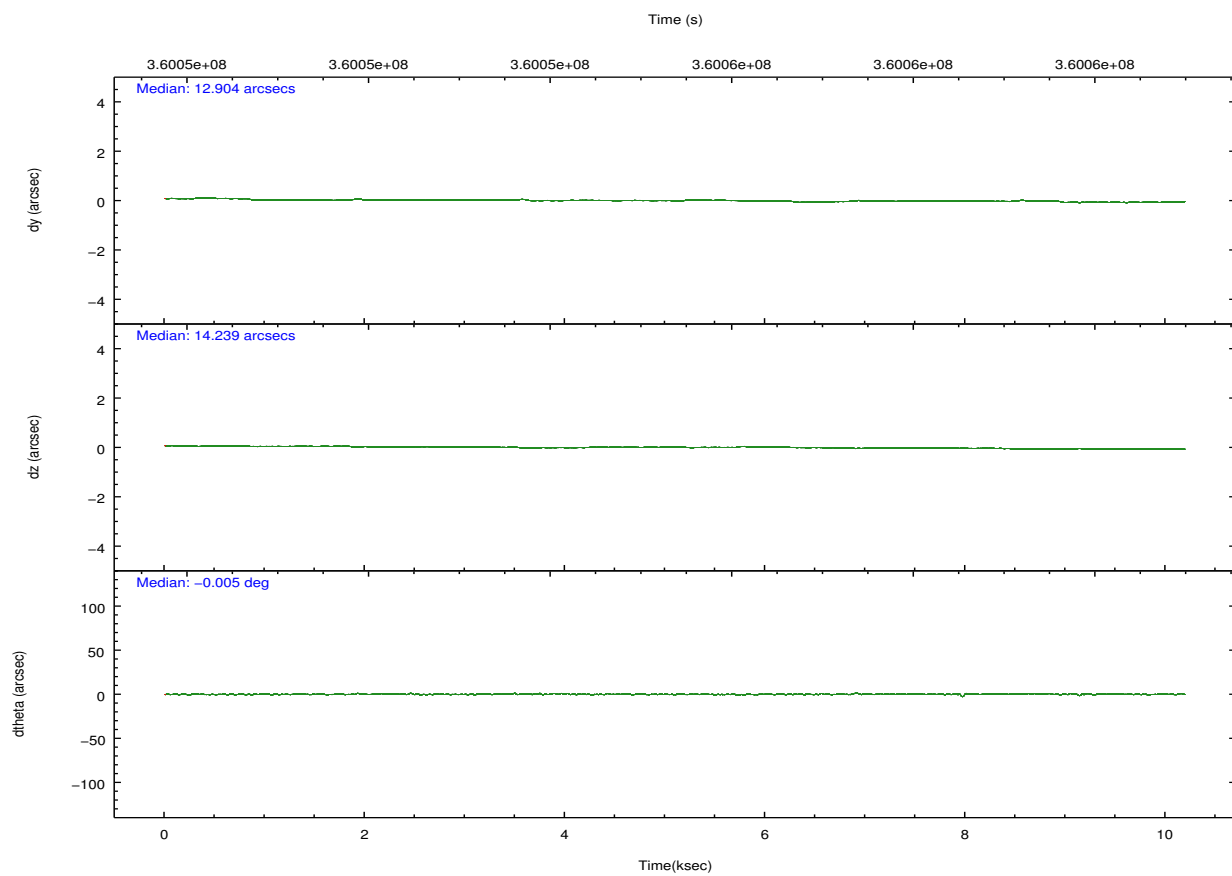
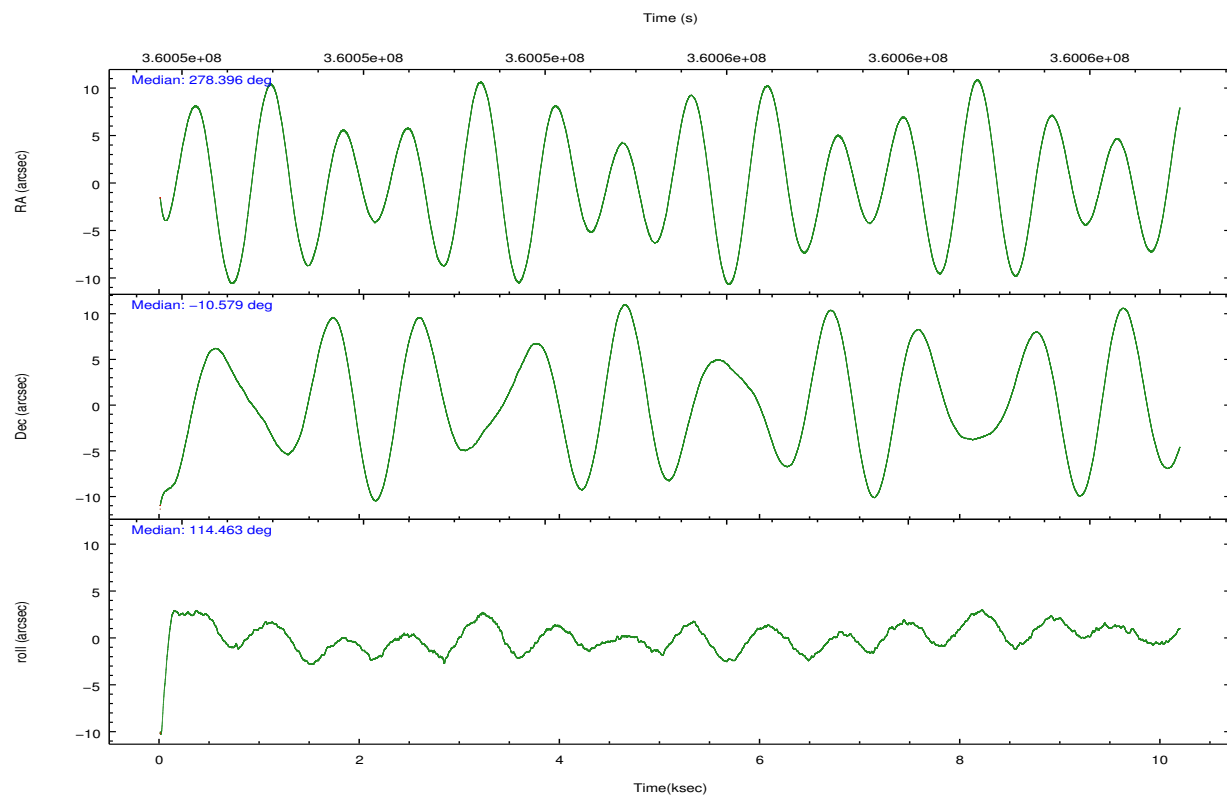
	ccd 7
grade 0 events	9710
	11%
grade 1 events	192
	0%
grade 2 events	20217
	24%
grade 3 events	6036
	7%
grade 4 events	6031
	7%
grade 5 events	9117
	10%
grade 6 events	31975
	38%
grade 7 events	0
	0%

2.2 Compared Parameters

Parameter	Planned	Actual	Parameter	Planned	Actual
Instrument	ACIS	ACIS	Obspar format version number	7	7
Detector	ACIS-7	ACIS-7	Obspar file type	PREDICTED	ACTUAL
Grating	NONE	NONE	Obspar update status	NONE	UPDATED
Data mode	CC33_FAINT	CC33_FAINT	Number of optional ACIS chips dropped	0	0
Observation mode	POINTING	POINTING	On-chip summing requested	N	N
[deg] Pointing RA	278.419184	278.3963127354783	Subarray requested	NONE	NONE
[deg] Pointing Dec	-10.594891	-10.57935458288376	Alternating exposures requested	N	N
[deg] Pointing Roll	114.314072	114.466491561541	[s] Primary exposure time	0.000000	0
[s] Window start time (MET)	349833666.184000	349833666.184000			
[s] Window stop time (MET)	360115266.184000	360115266.184000			
[mm] SIM focus pos	-0.684267	-0.6828225247311905			
[mm] SIM defocus	0	0.001444936568705701			
[mm] SIM translation stage pos	-190.132523	-190.1400660498719			
[mm] SIM translation stage offset	0	0.00754346686406393			
[s] Observation start time (MET)	360050471.184000	360049181.93811			
Observation start date	2009-05-30T06:00:05	2009-05-30T05:39:41			
[s] Observation end time (MET)	360060473.184000	360060697.30119			
Observation end date	2009-05-30T08:46:47	2009-05-30T08:51:37			
Read mode	CONTINUOUS	CONTINUOUS			

2.3 Aspect



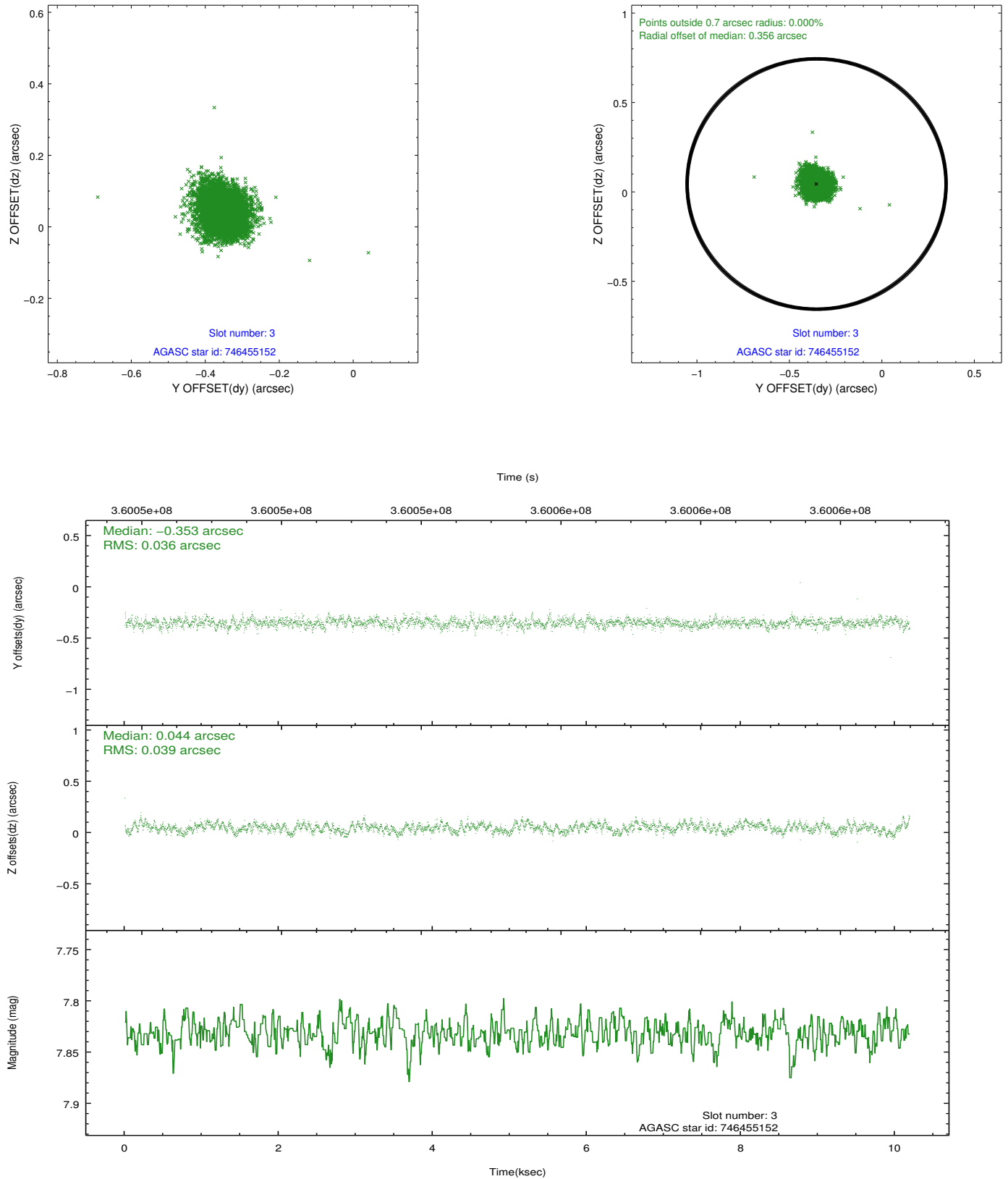


Slot Statistics

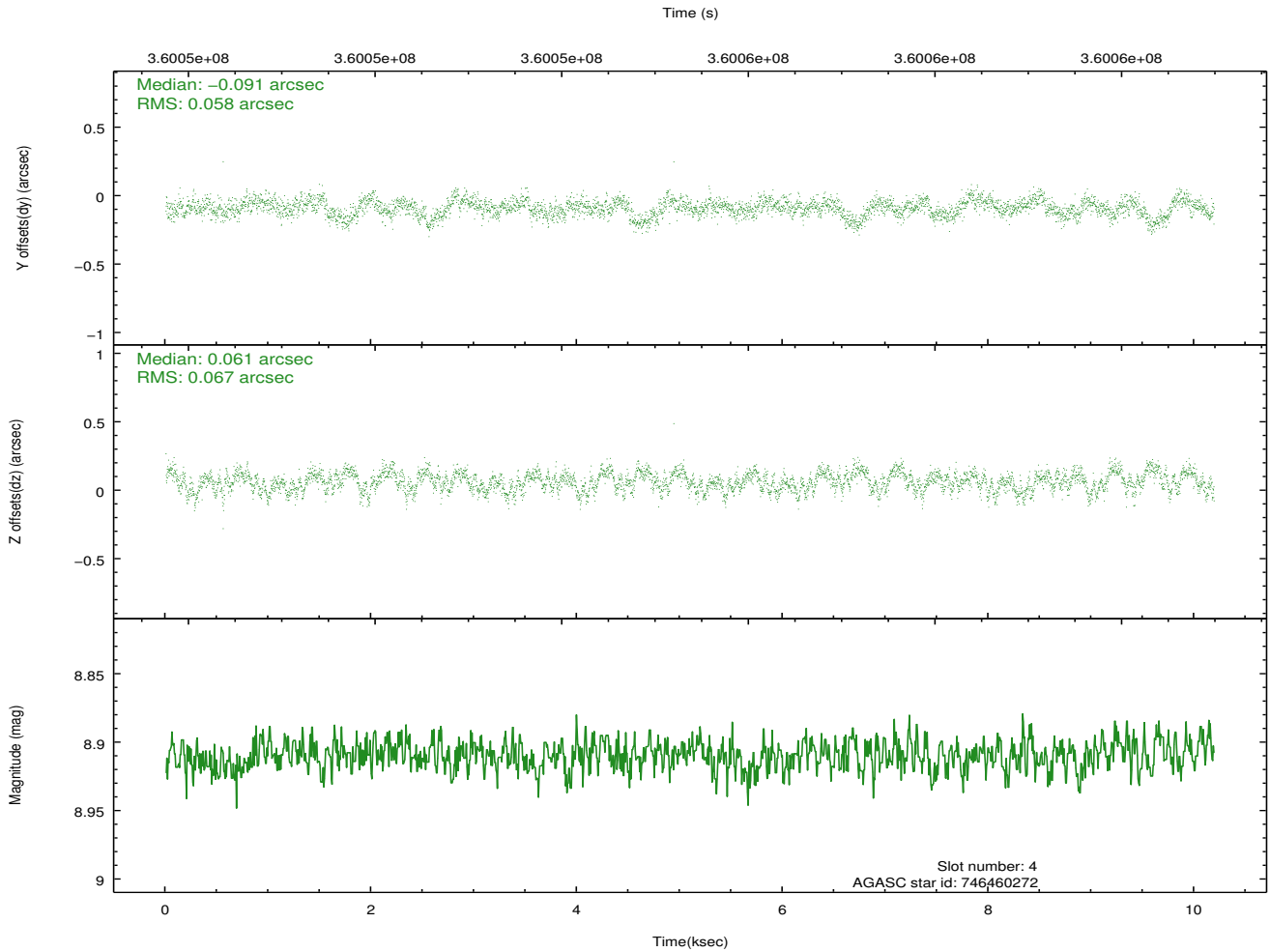
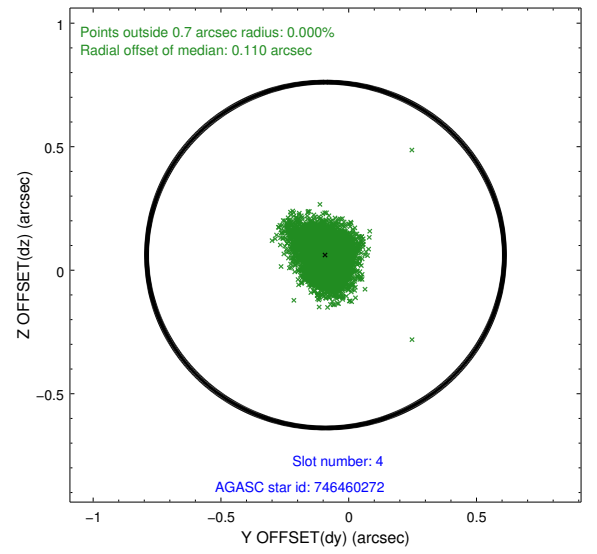
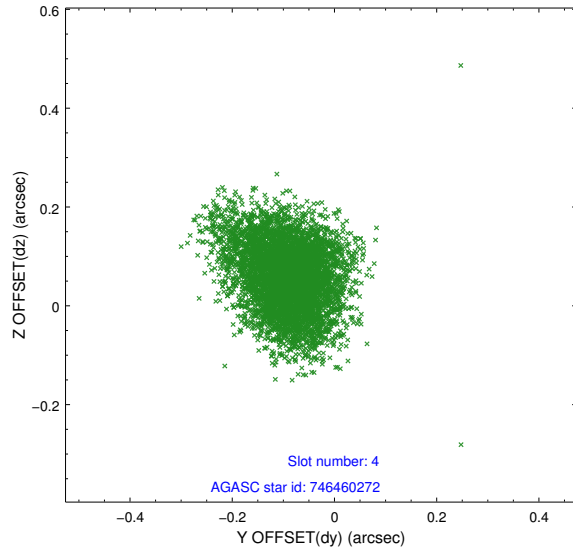
slot	status	id	mag	n_pts	med_dy	med_dz	dr1	dr2	ra	dec	mean_y	mean_z
0	FID	ACIS-S-1	7.04	2486	0.053	-0.018	0.007	0.012	0.000000	0.000000	930.27	-1731.24
1	FID	ACIS-S-4	7.04	2486	0.125	-0.009	0.007	0.012	0.000000	0.000000	2148.03	172.40
2	FID	ACIS-S-5	7.07	2486	-0.204	0.039	0.007	0.013	0.000000	0.000000	-1818.20	166.61
3	GUIDE	746455152	7.83	4971	-0.353	0.044	0.055	0.090	278.447893	-9.976732	1986.36	-1008.71
4	GUIDE	746460272	8.91	4968	-0.091	0.061	0.094	0.152	278.847488	-10.152127	827.73	-2038.92
5	GUIDE	746462392	8.52	4966	0.135	0.010	0.081	0.127	279.038421	-10.890715	-1875.09	-1556.26
6	GUIDE	746462456	8.41	4969	0.193	-0.137	0.081	0.124	278.652171	-10.530173	-128.33	-847.28
7	GUIDE	746462680	9.03	4962	0.120	0.027	0.086	0.136	278.660755	-10.782756	-967.68	-499.93

2.4 Star Slots

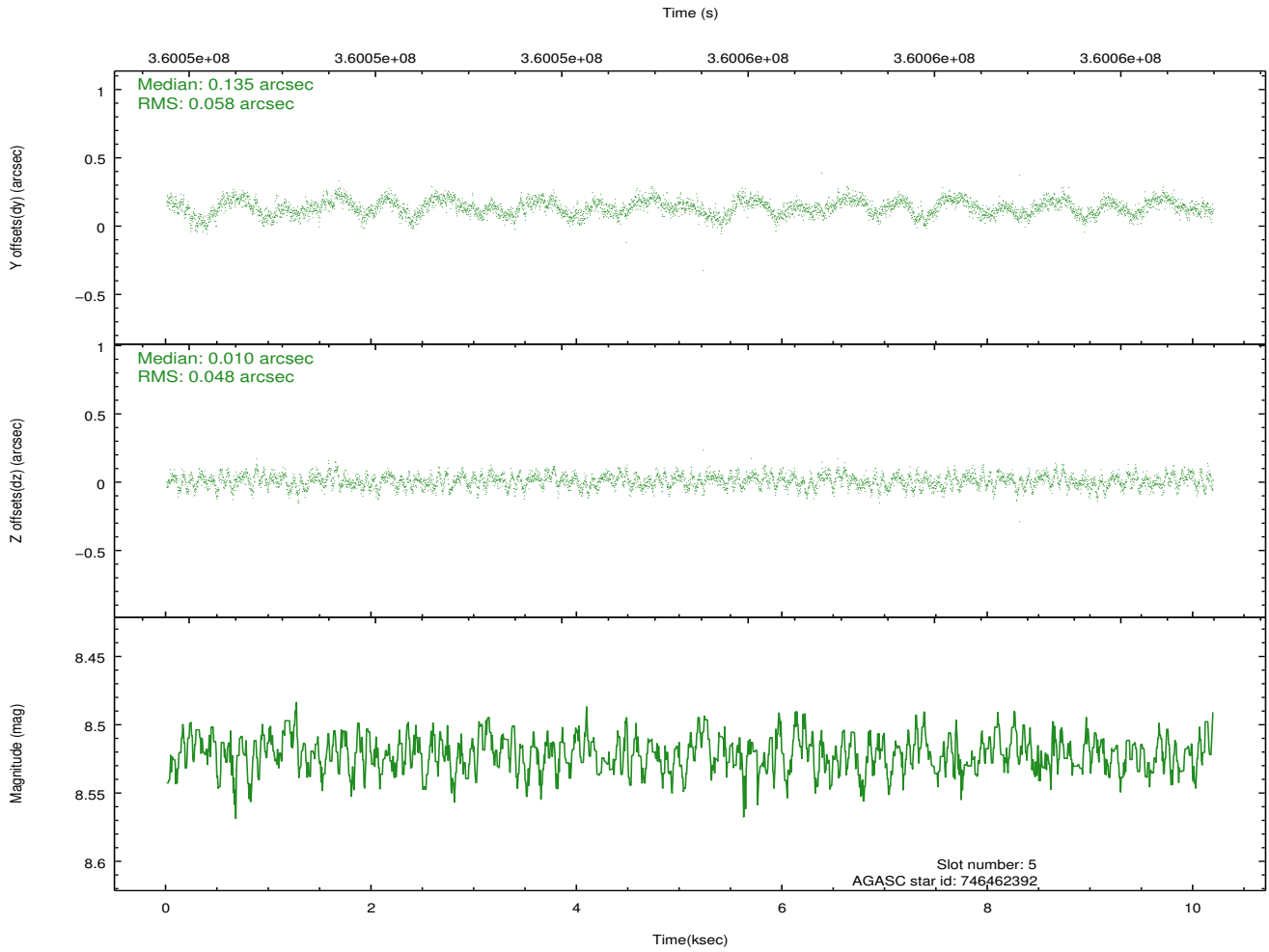
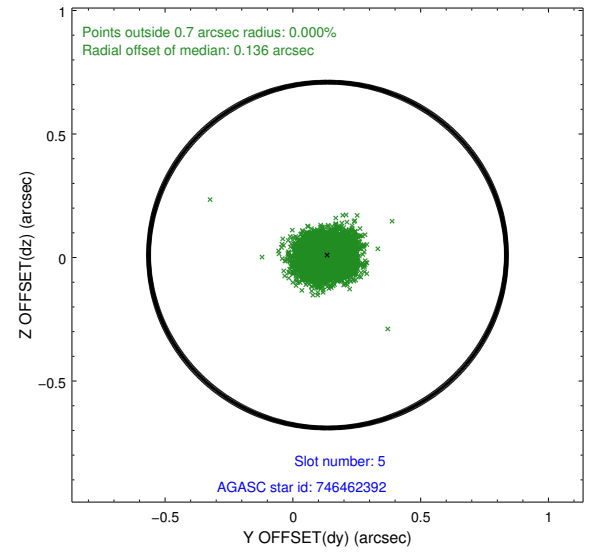
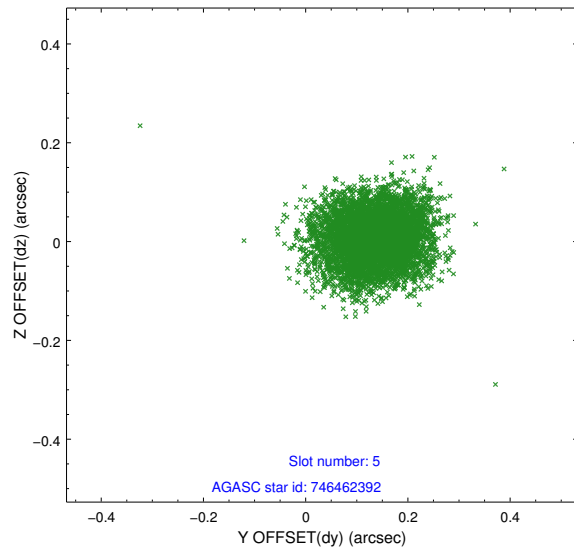
2.4.1 Slot 3



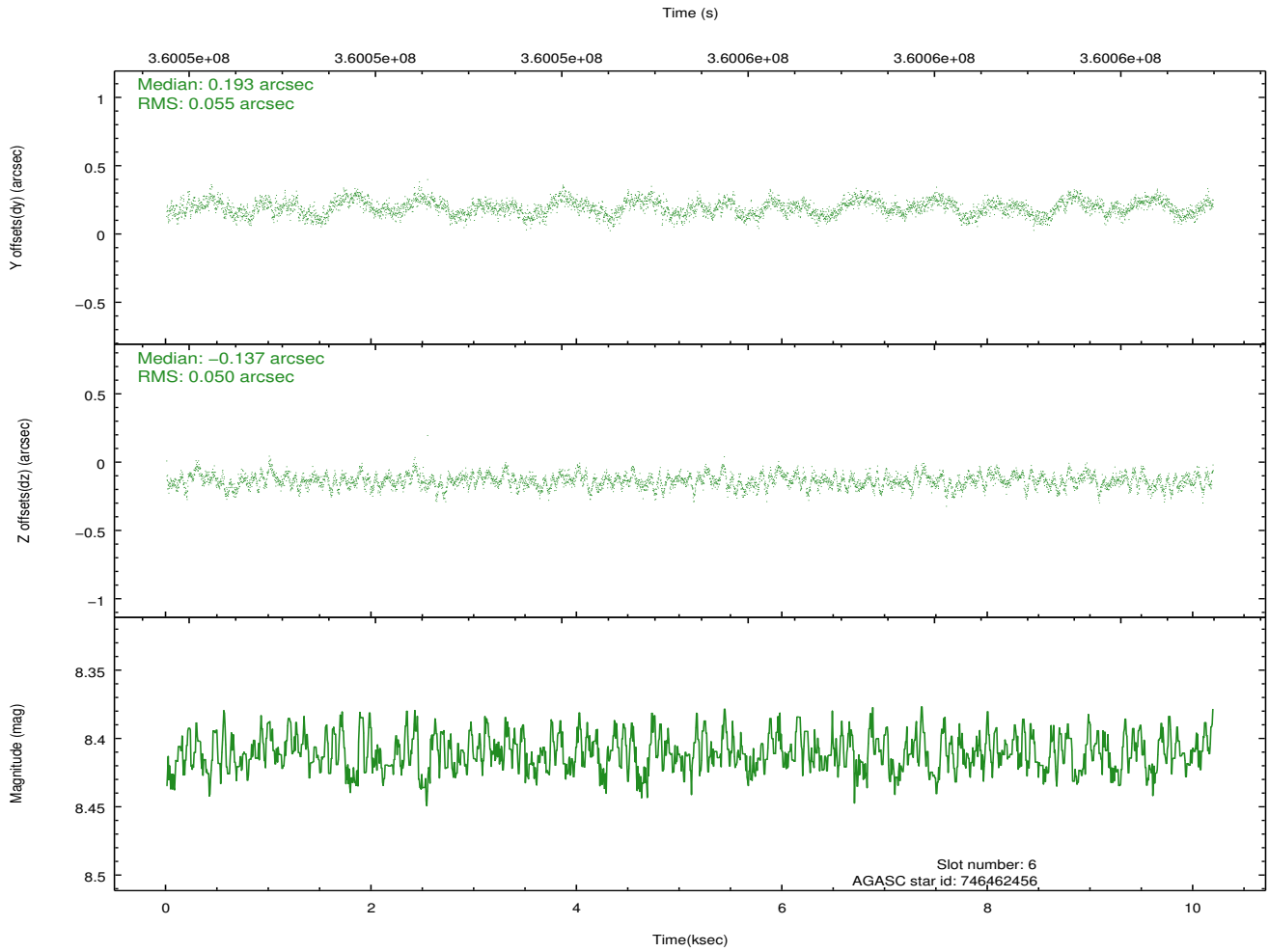
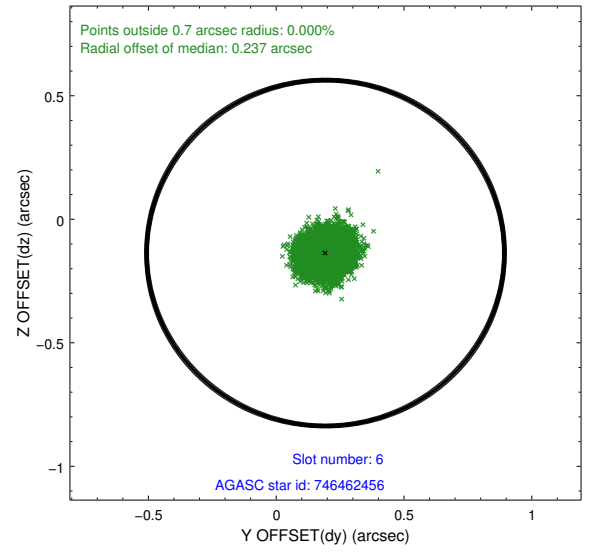
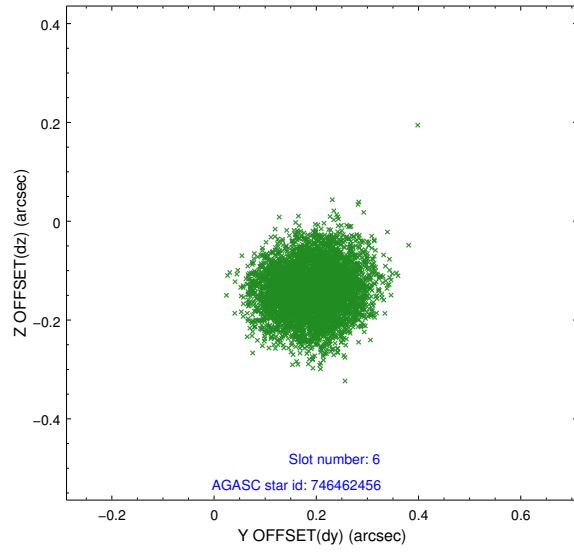
2.4.2 Slot 4



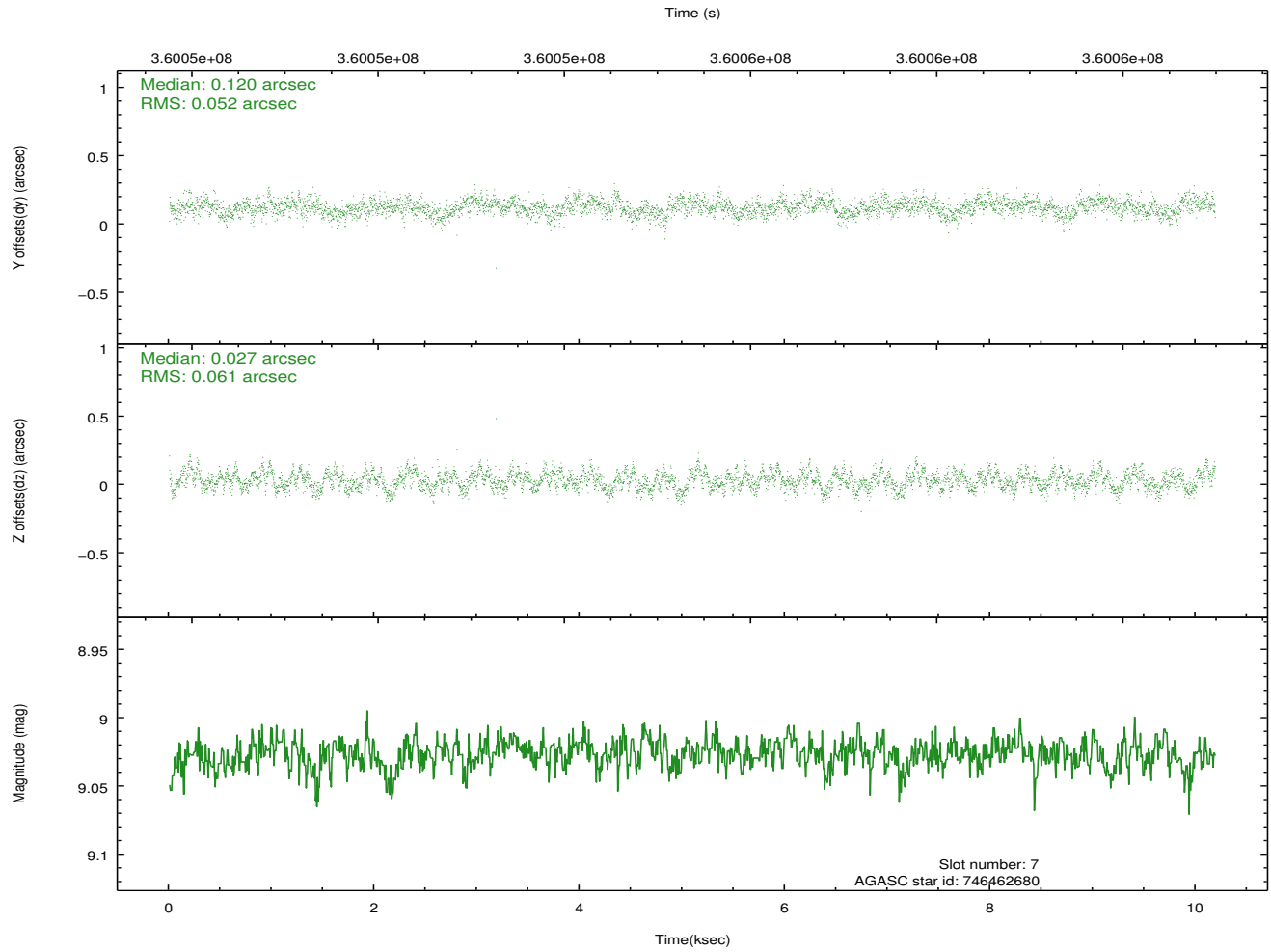
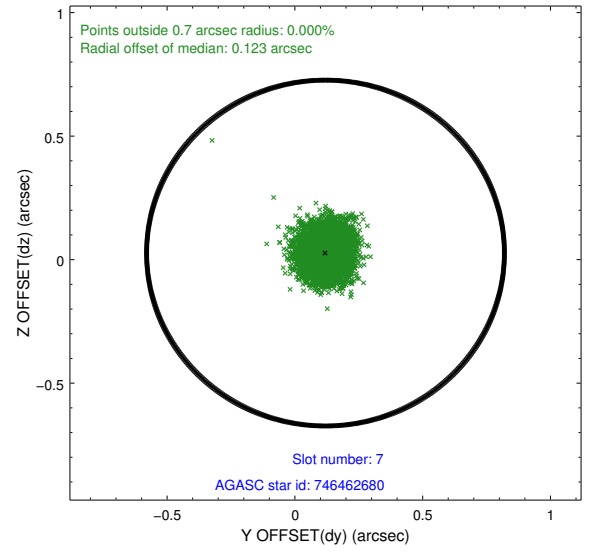
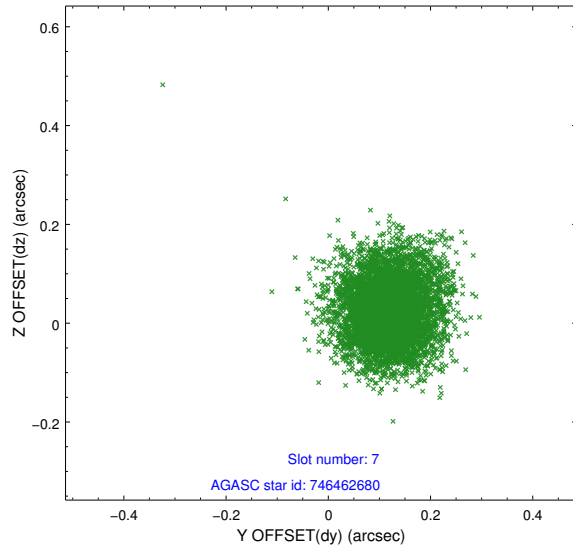
2.4.3 Slot 5



2.4.4 Slot 6

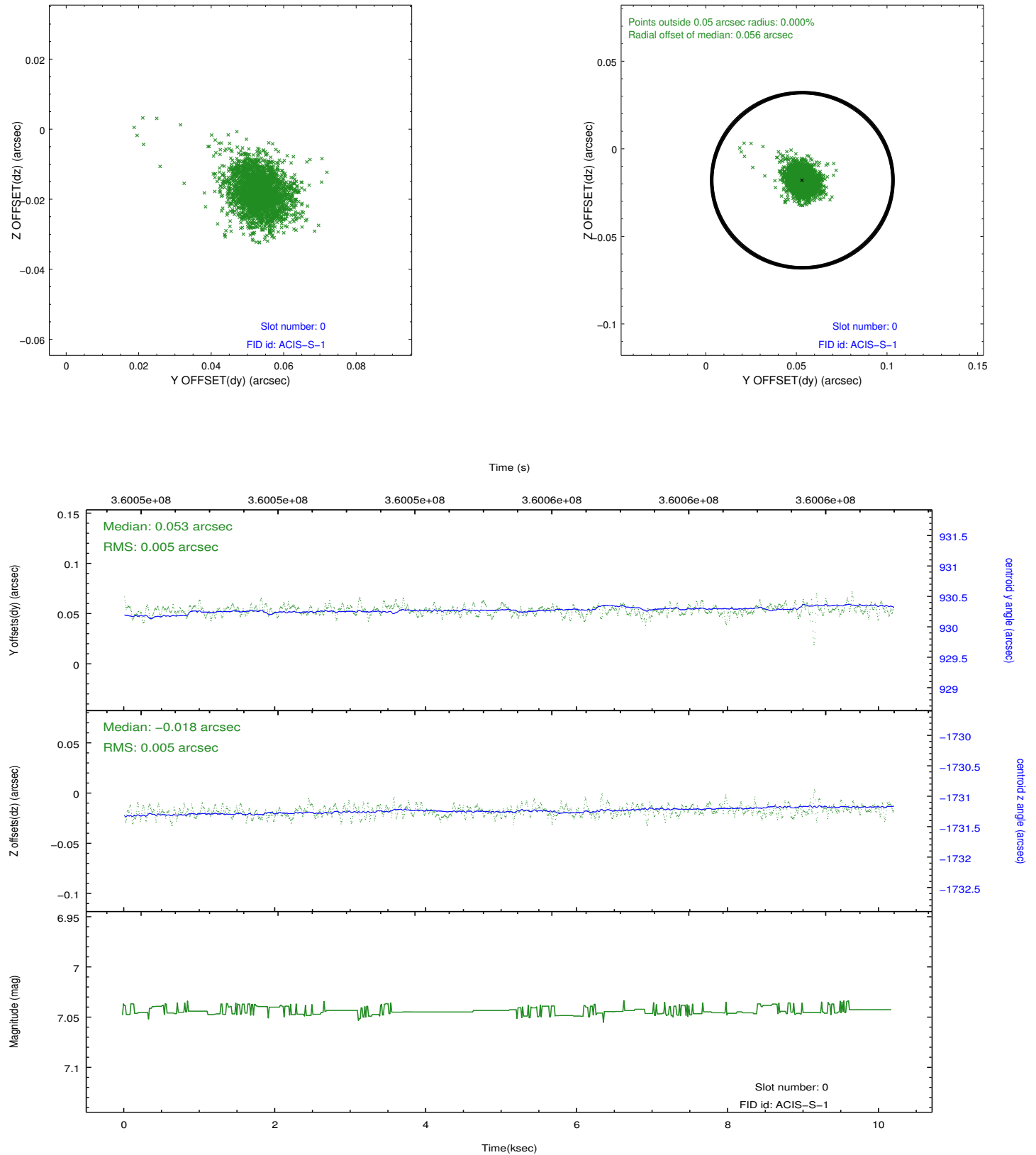


2.4.5 Slot 7

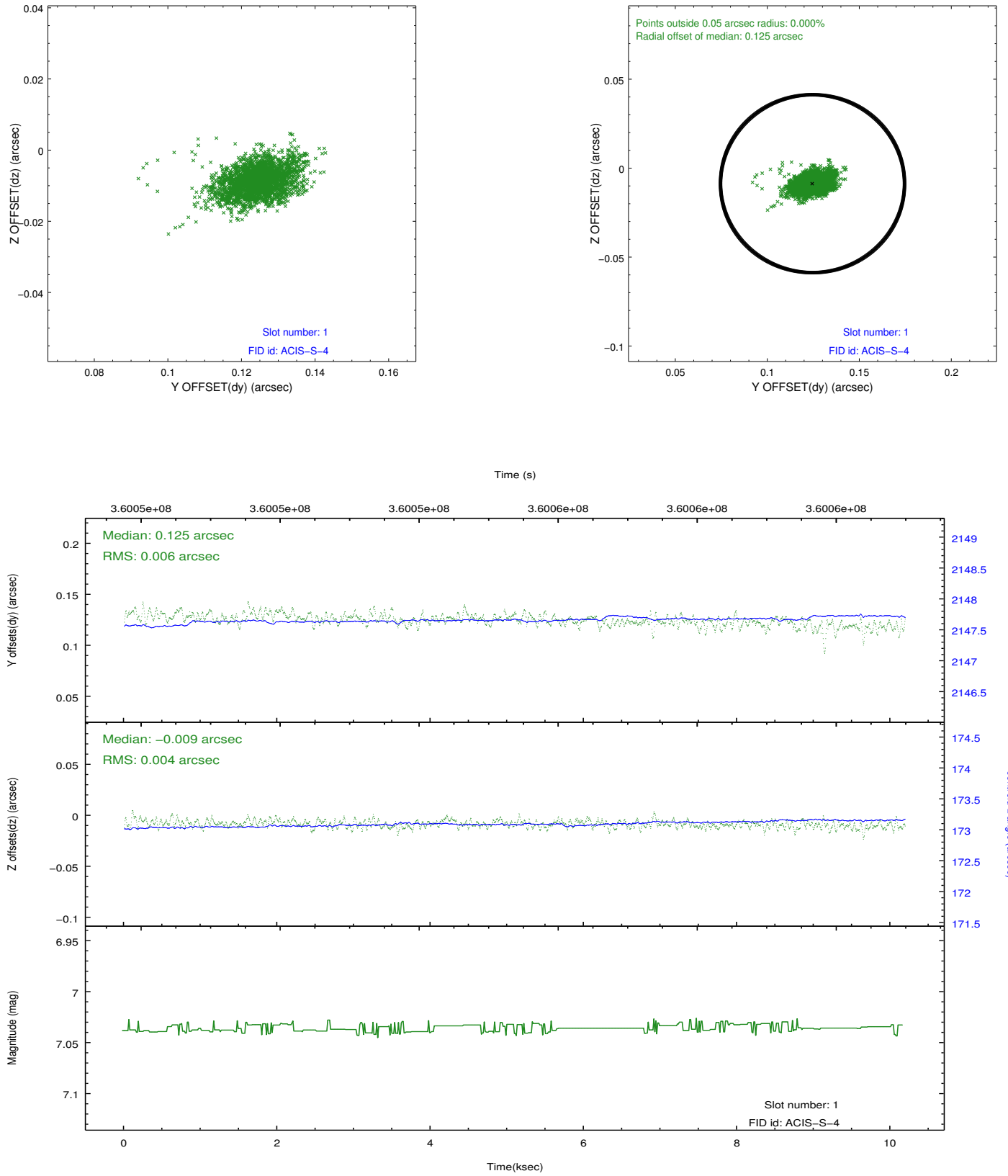


2.5 FID Slots

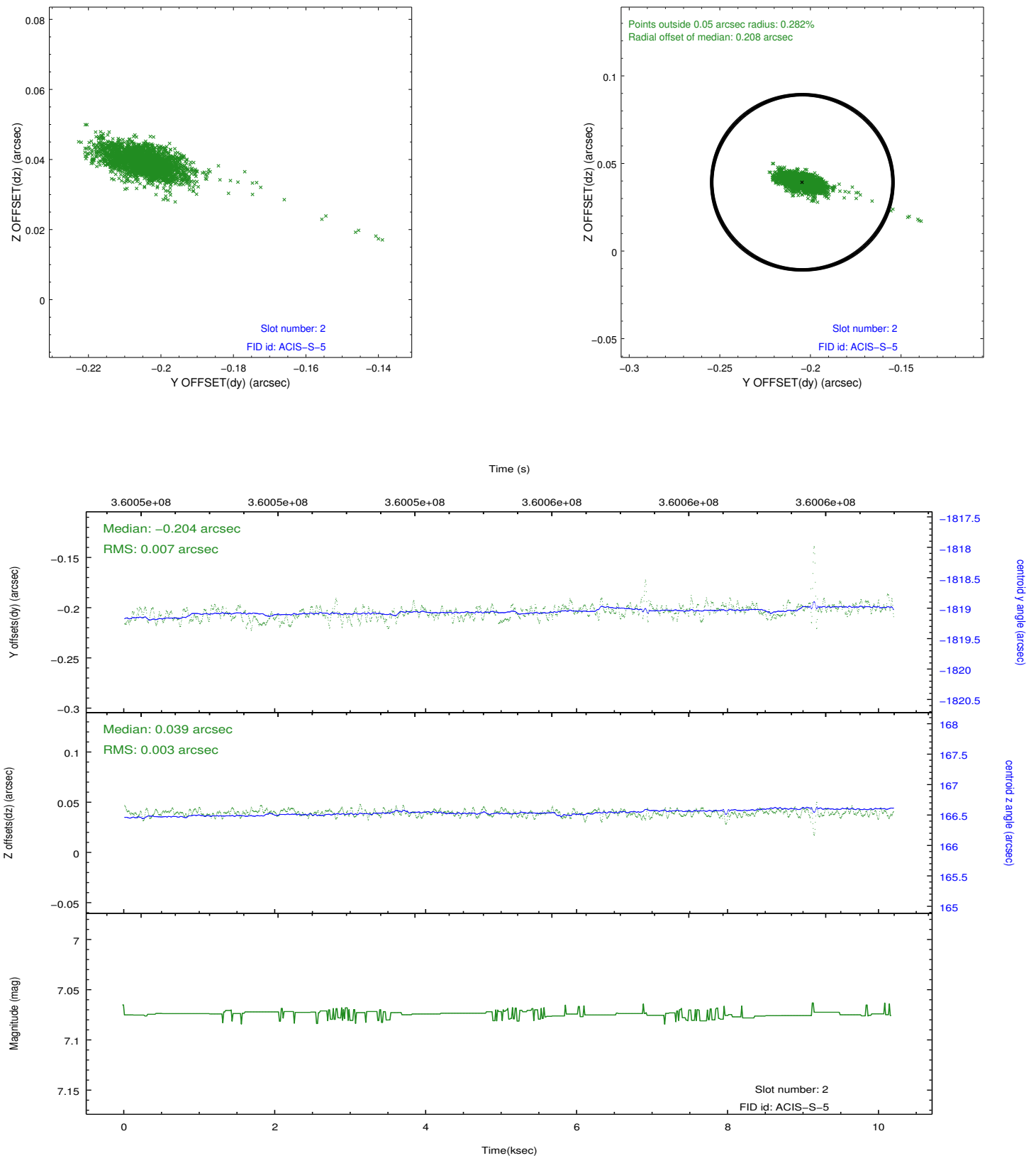
2.5.1 Slot 0



2.5.2 Slot 1



2.5.3 Slot 2



A Summary

A.1 Status

V&V Scientist	Joy Nichols
V&V Date (YYYY-MM-DD)	2012.06.08
V&V Edition	1
V&V Disposition and Status	OK
V&V Charge Time	10.18325

A.2 Comments