

V&V Reference Report

L2 ASCDS Version : 8.4.5

Observation 10584 - L2 Version 3
Chandra X-Ray Center

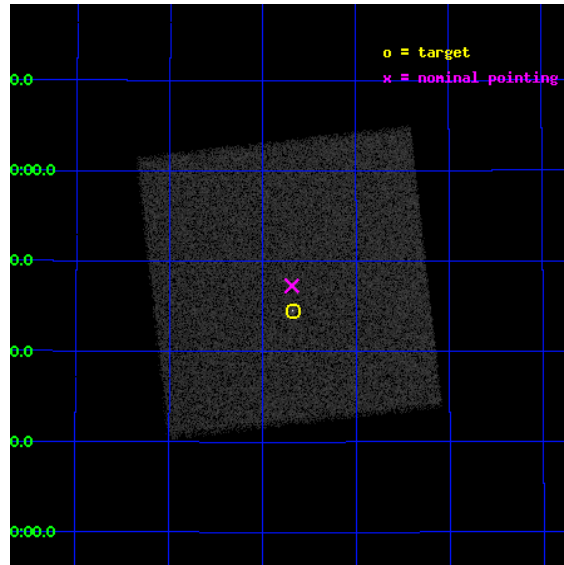
L2 Processing Date : Aug 13 2012

Contents

1	Front	2
2	OBI	3
2.1	OBI	3
2.1.1	Images	3
2.1.2	Parameters	4
2.1.3	Events	4
2.2	Compared Parameters	5
2.3	Aspect	6
2.4	Star Slots	9
2.4.1	Slot 3	9
2.4.2	Slot 4	10
2.4.3	Slot 5	11
2.4.4	Slot 6	12
2.4.5	Slot 7	13
2.5	FID Slots	14
2.5.1	Slot 0	14
2.5.2	Slot 1	15
2.5.3	Slot 2	16
A	Summary	17
A.1	Status	17
A.2	Comments	17

1 Front

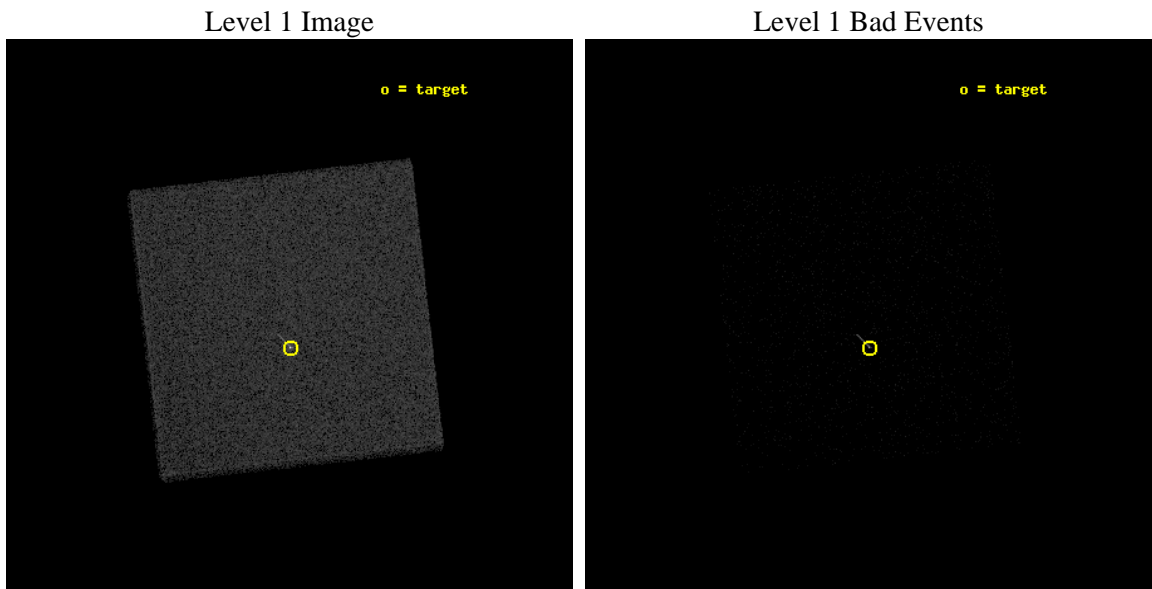
seq_num	290820	Sequence number
obs_id	10584	Observation id
title	AO-10 Calibration Observations to Monitor the Spatial Variations in the HRC-I Gain	Proposal title
observer	Dr. CXC Calibration	Principal investigator
object	ArLac	Source name
ra_targ	332.17	Observer's specified target RA [deg]
dec_targ	45.742306	Observer's specified target Dec [deg]
ra_nom	332.17174866103	Nominal RA [deg]
dec_nom	45.788319722231	Nominal Dec [deg]
roll_nom	218.51353967812	Nominal Roll [deg]
revision	3	Processing version of data
ontime	1182.0813093781	[s]
livetime	1167.2071375205	Ontime multiplied by DTCOR
l2events	95007	Number of level 2 events



2 OBI

2.1 OBI

2.1.1 Images



2.1.2 Parameters

obi_num	0	Obi number	sched_exp_time	1000.000000	[s] Scheduled observation exposure time
ascdsver	8.4.5	Processing system revision	ontime	1182.0813093781	[s]
caldbver	4.5.1.1	 	l1events	173648	Number of level 1 events
date	2012-08-13T13:05:26	Date and time of file creation			
revision	3	Processing version of data			

2.1.3 Events

Level 1 Events

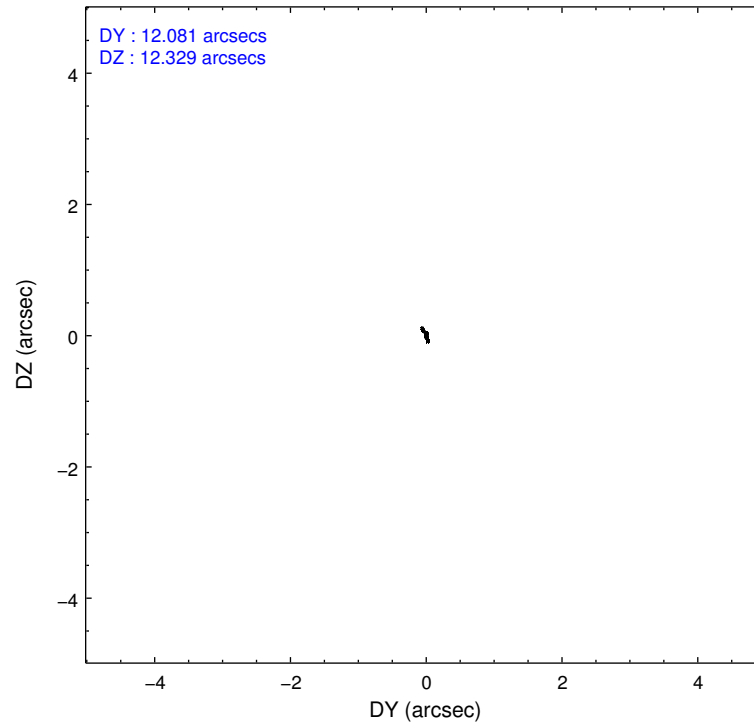
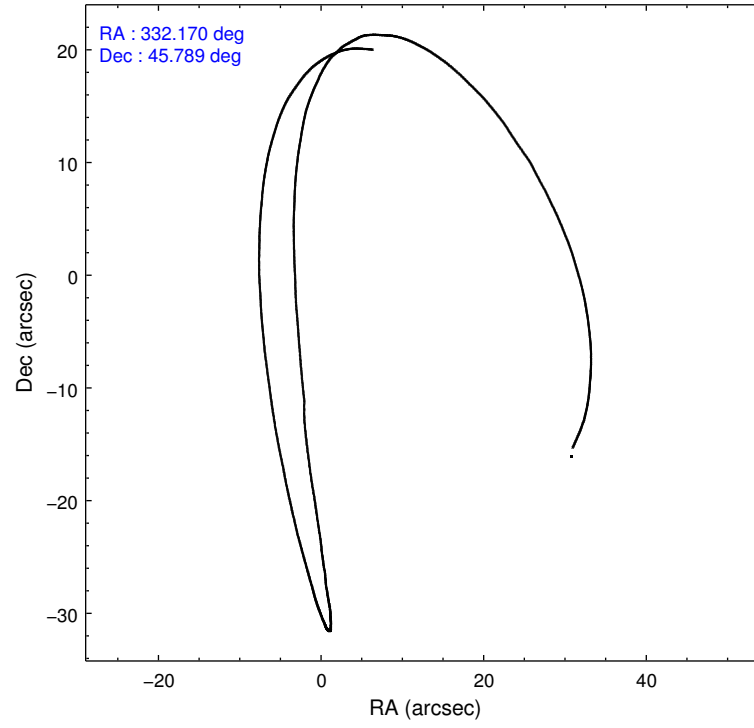
	segment 0
level 1 events	173648
rejected events	37559
rejected %	21%

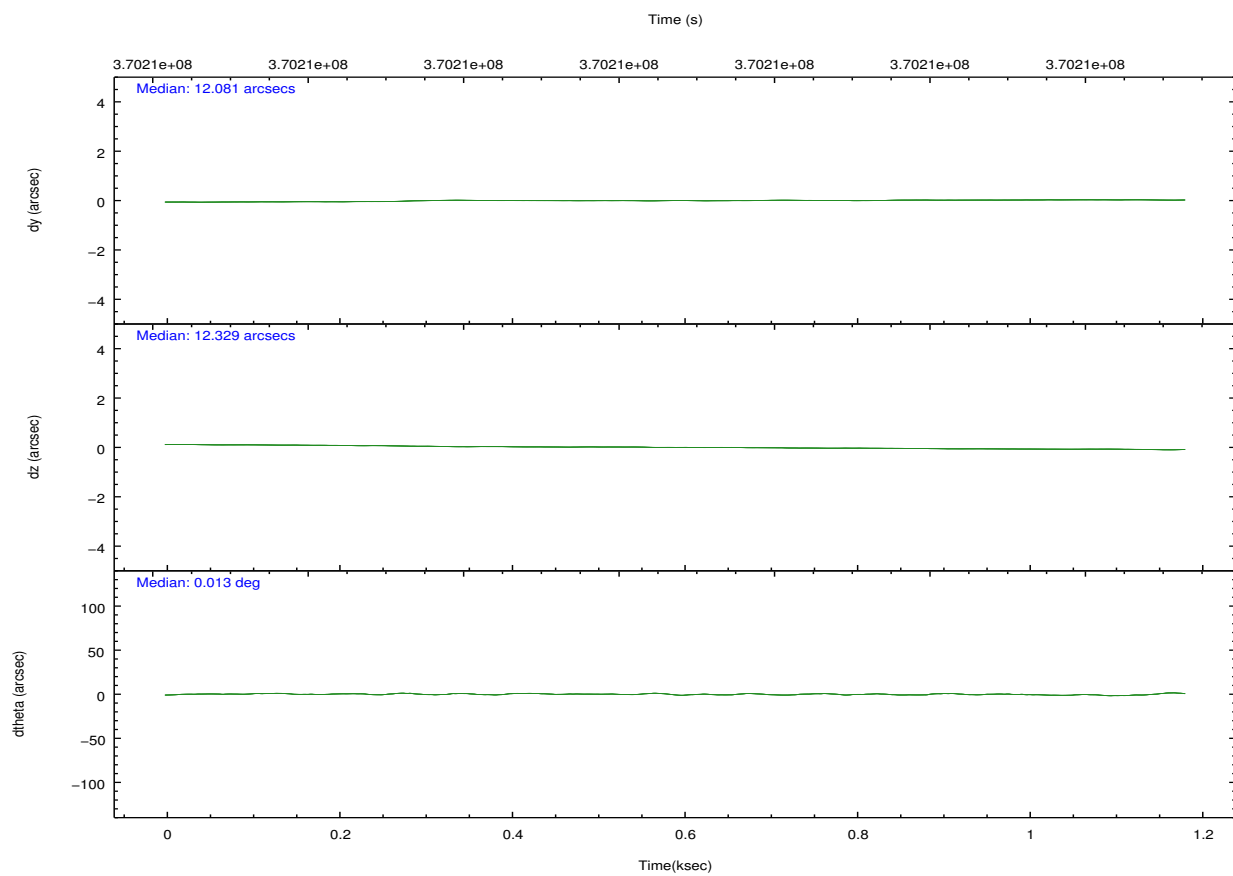
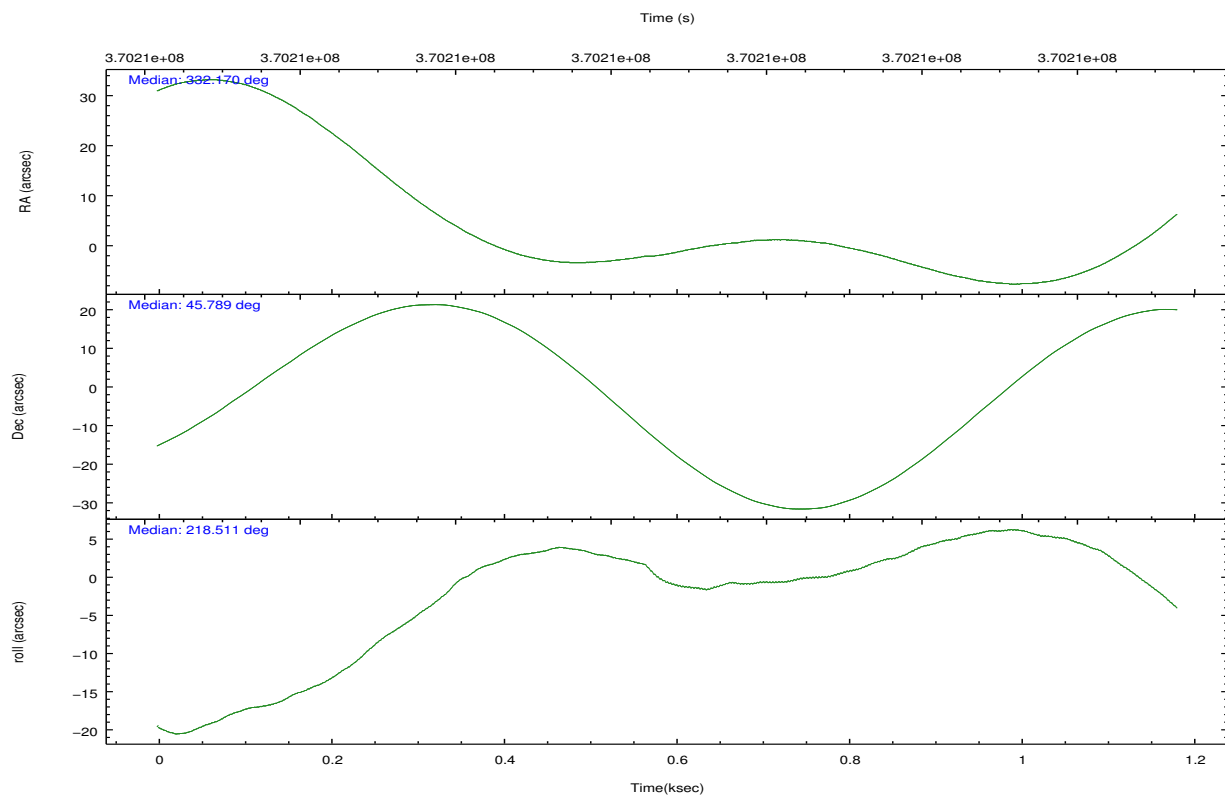
2.2 Compared Parameters

Parameter	Planned	Actual
Instrument	HRC	HRC
Detector	HRC-I	HRC-I
Grating	NONE	NONE
Data mode	OBSERVING	OBSERVING
Observation mode	POINTING	POINTING
[deg] Pointing RA	332.185177	332.1717486610299
[deg] Pointing Dec	45.813454	45.78831972223053
[deg] Pointing Roll	218.599391	218.5135396781158
[mm] SIM focus pos	-1.040293	-1.038866356238299
[mm] SIM defocus	0	0.001426264420575141
[mm] SIM translation stage pos	126.985494	126.9804656746847
[mm] SIM translation stage offset	0	0.005023216916882234
[s] Observation start time (MET)	370207859.184000	370207483.38406
Observation start date	2009-09-24T19:29:53	2009-09-24T19:24:43
[s] Observation end time (MET)	370208859.184000	370208993.20914
Observation end date	2009-09-24T19:46:33	2009-09-24T19:49:53

Parameter	Planned	Actual
Obspar format version number	7	7
Obspar file type	PREDICTED	ACTUAL
Obspar update status	NONE	UPDATED

2.3 Aspect



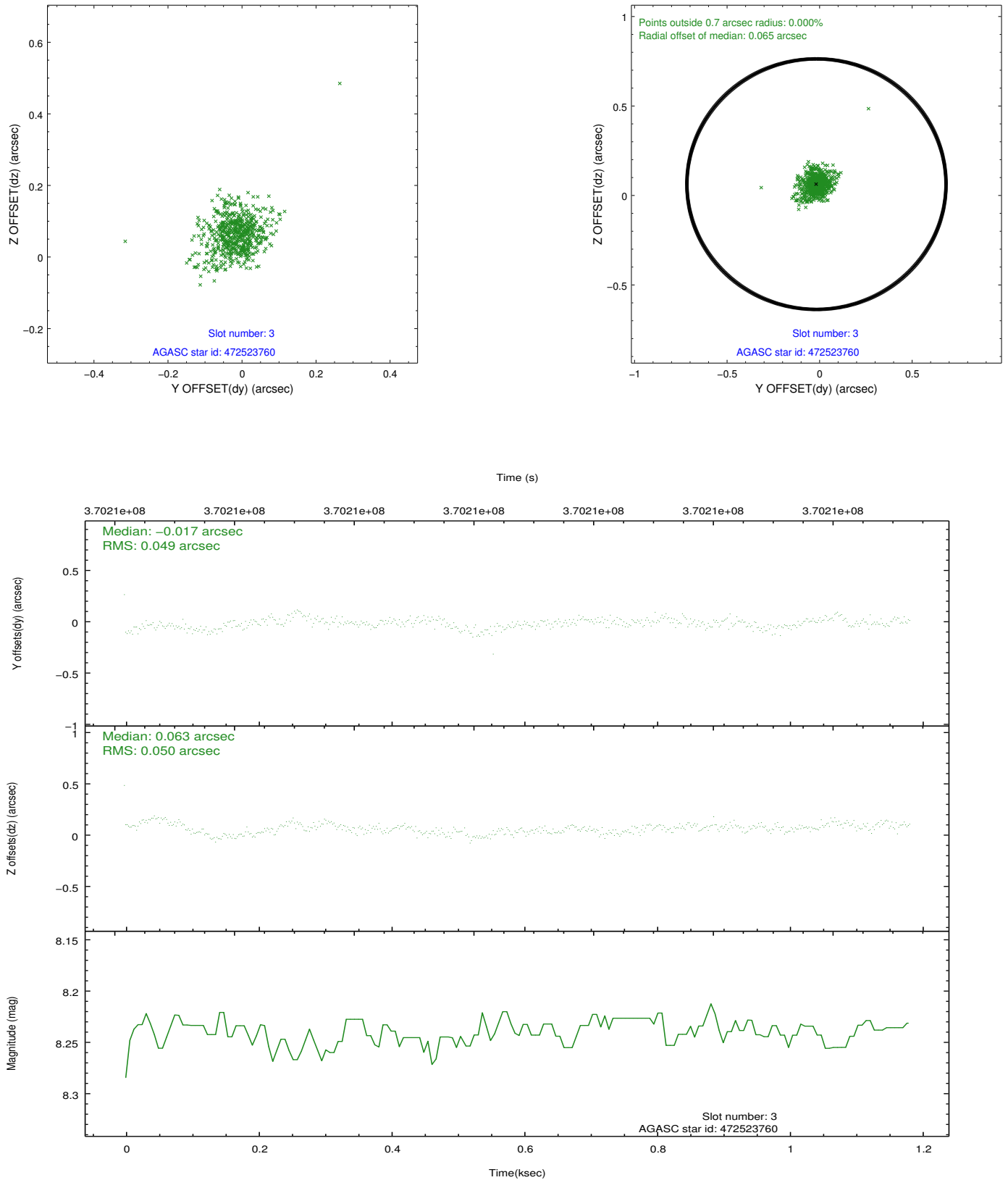


Slot Statistics

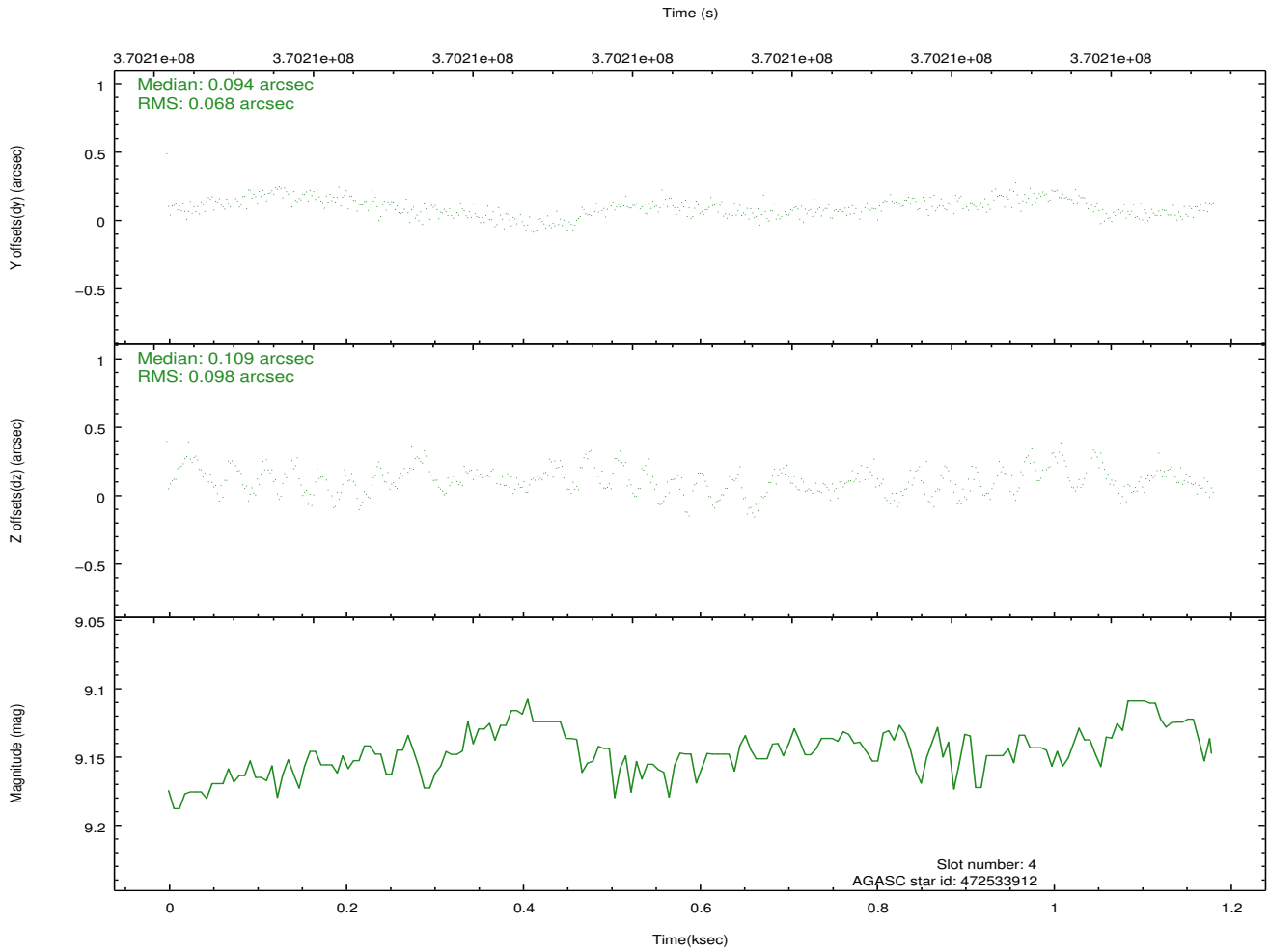
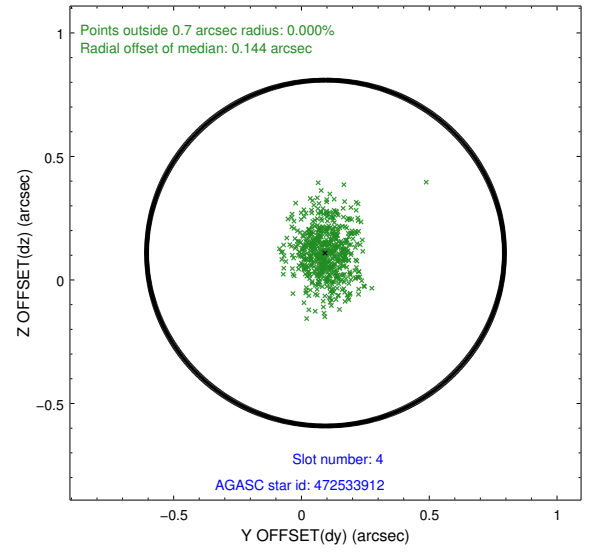
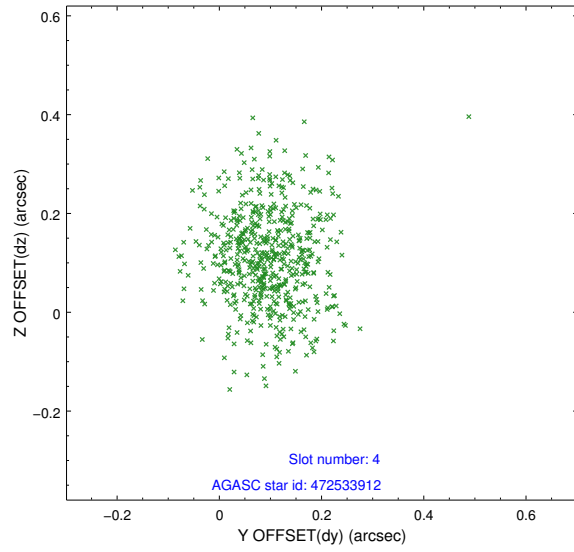
slot	status	id	mag	n_pts	med_dy	med_dz	dr1	dr2	ra	dec	mean_y	mean_z
0	FID	HRC-I-1	6.99	289	-0.099	-0.030	0.005	0.009	0.000000	0.000000	-768.00	-1300.25
1	FID	HRC-I-2	7.01	289	0.168	-0.095	0.005	0.011	0.000000	0.000000	842.24	-1306.51
2	FID	HRC-I-4	7.00	289	0.047	0.032	0.005	0.008	0.000000	0.000000	1278.03	997.30
3	GUIDE	472523760	8.24	577	-0.017	0.063	0.068	0.119	331.645363	45.403260	1986.13	300.76
4	GUIDE	472533912	9.15	577	0.094	0.109	0.123	0.210	331.791136	46.368695	-478.57	-2172.76
5	GUIDE	472651904	6.15	578	-0.148	-0.244	0.090	0.132	332.170077	45.742257	189.96	173.30
6	GUIDE	472655152	9.43	578	0.012	-0.057	0.107	0.202	332.504239	45.862991	-735.75	360.05
7	GUIDE	472665256	9.02	577	0.067	0.146	0.082	0.144	332.808125	46.195041	-2073.93	-107.93

2.4 Star Slots

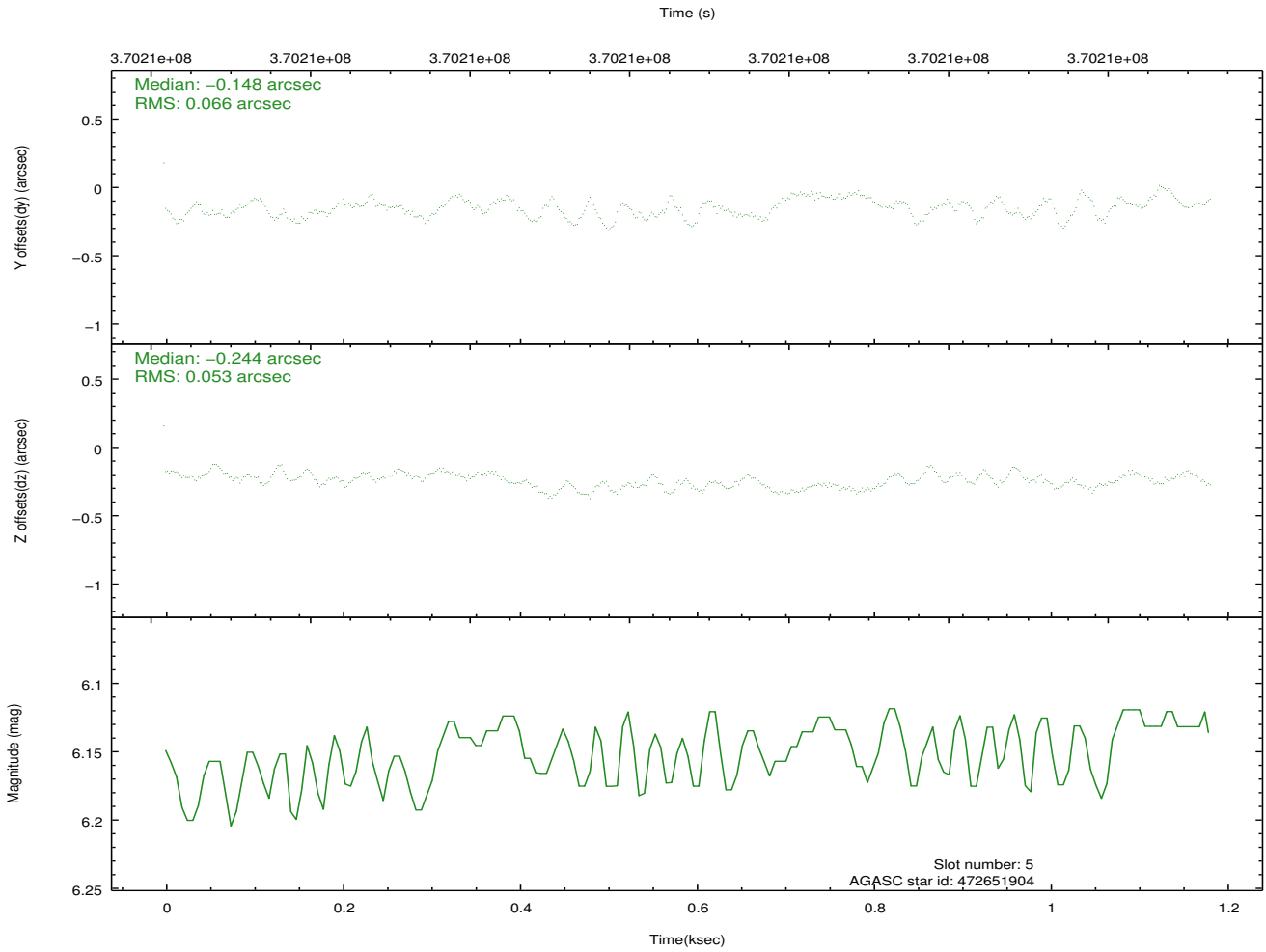
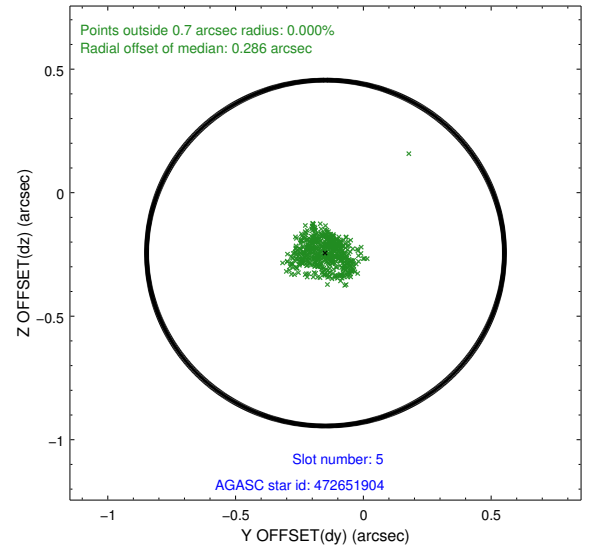
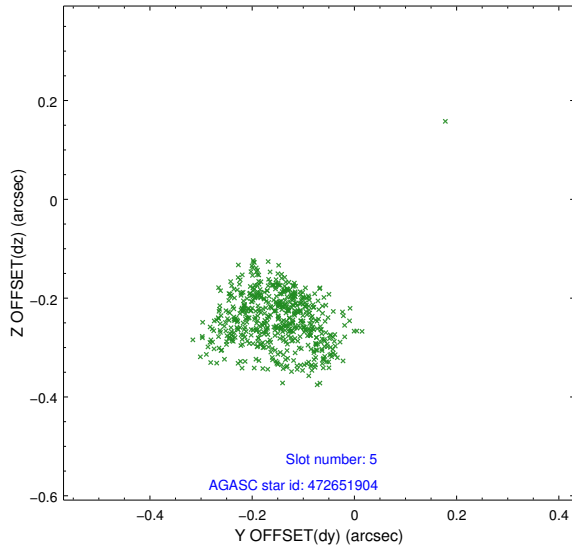
2.4.1 Slot 3



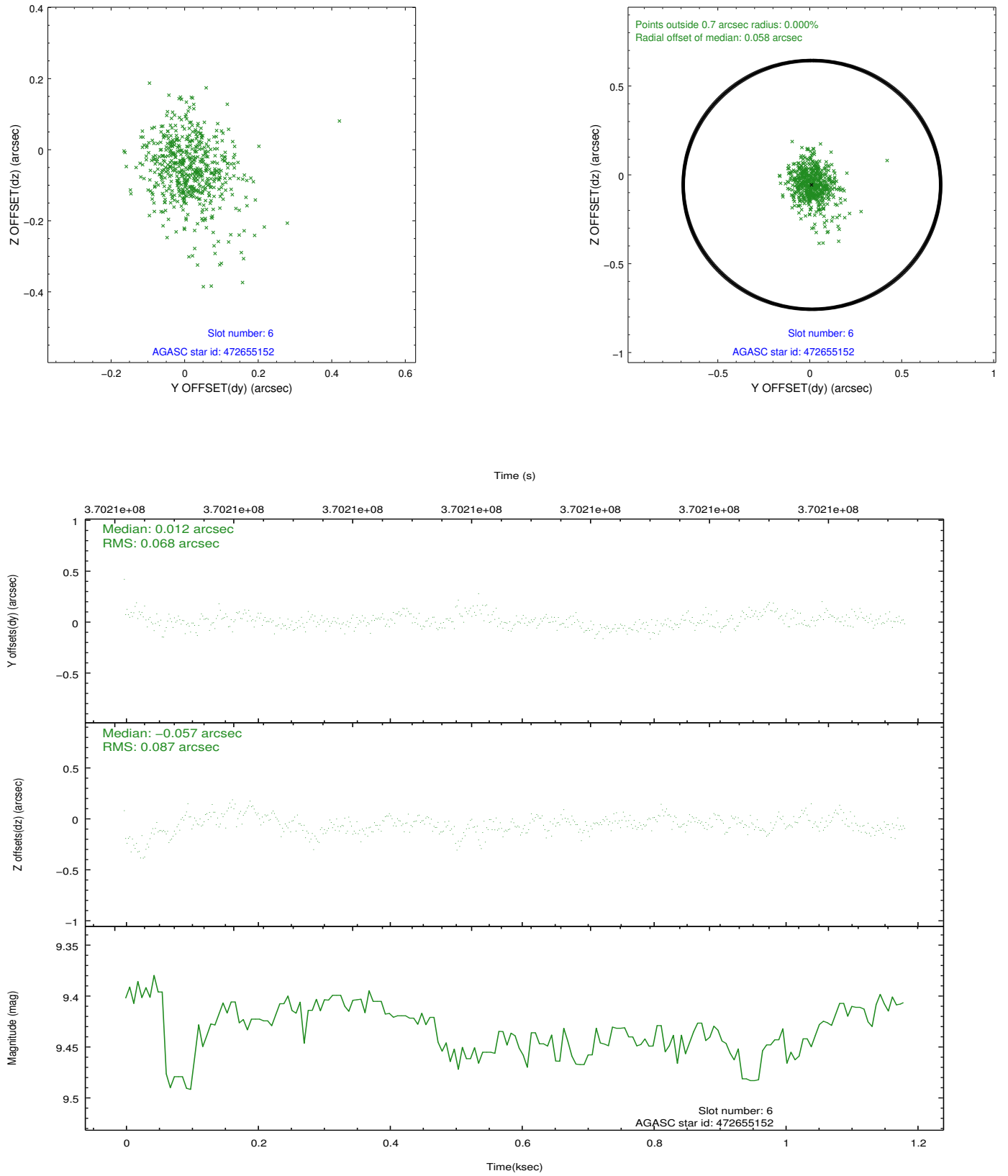
2.4.2 Slot 4



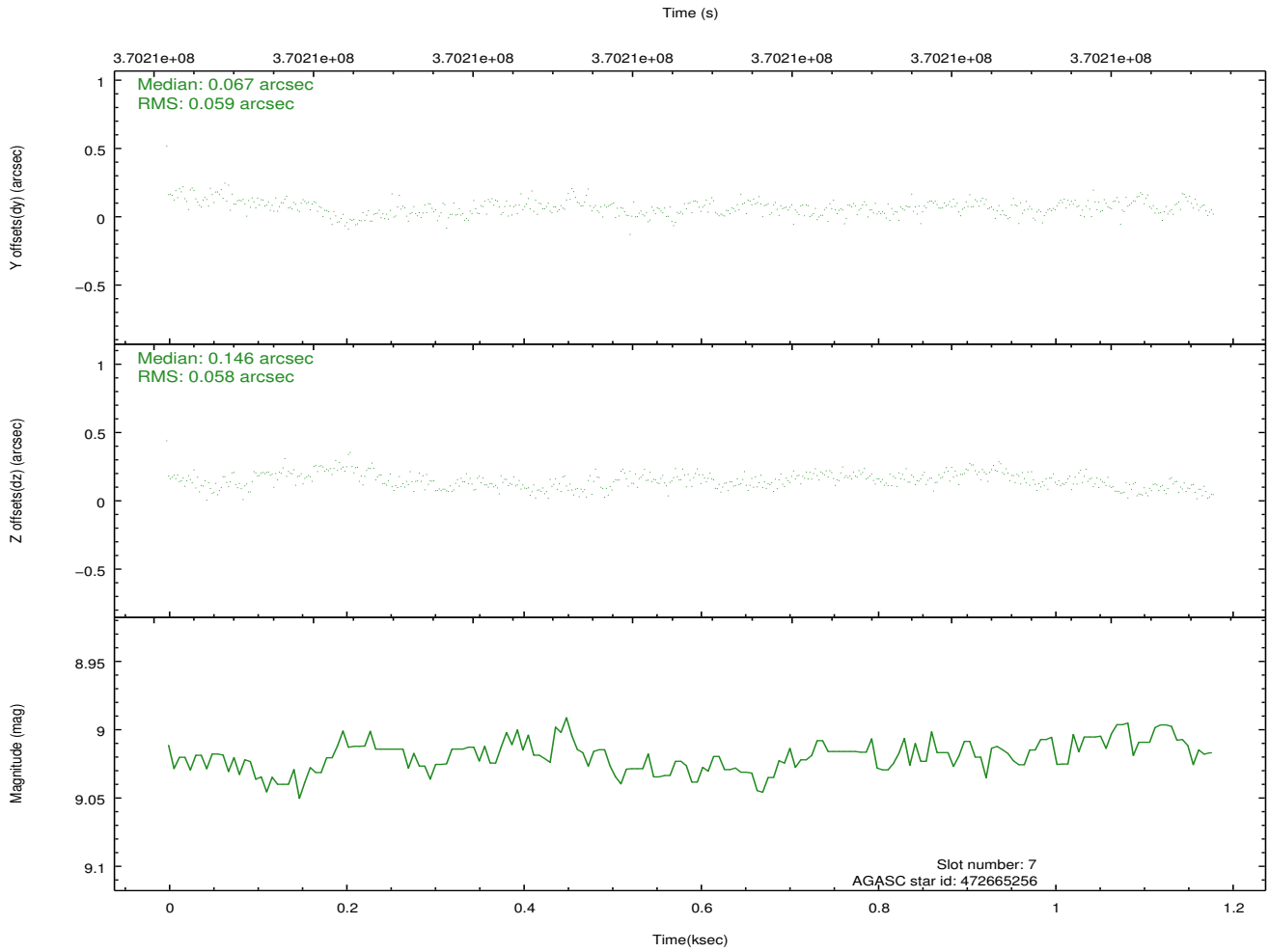
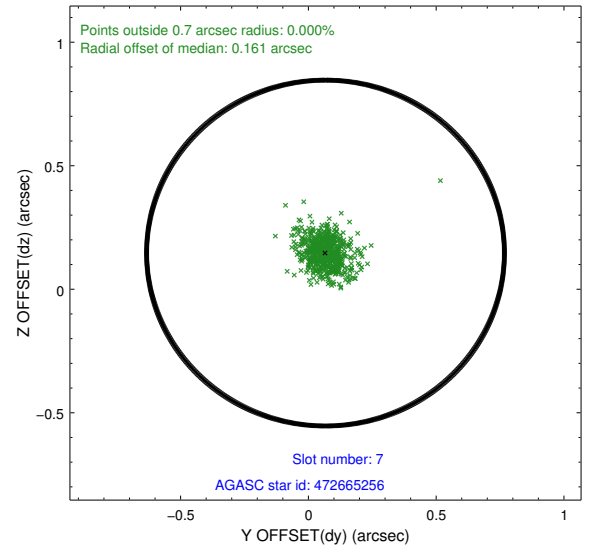
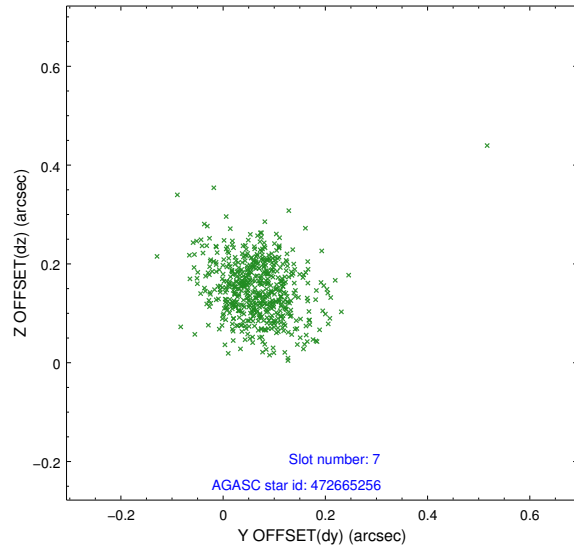
2.4.3 Slot 5



2.4.4 Slot 6

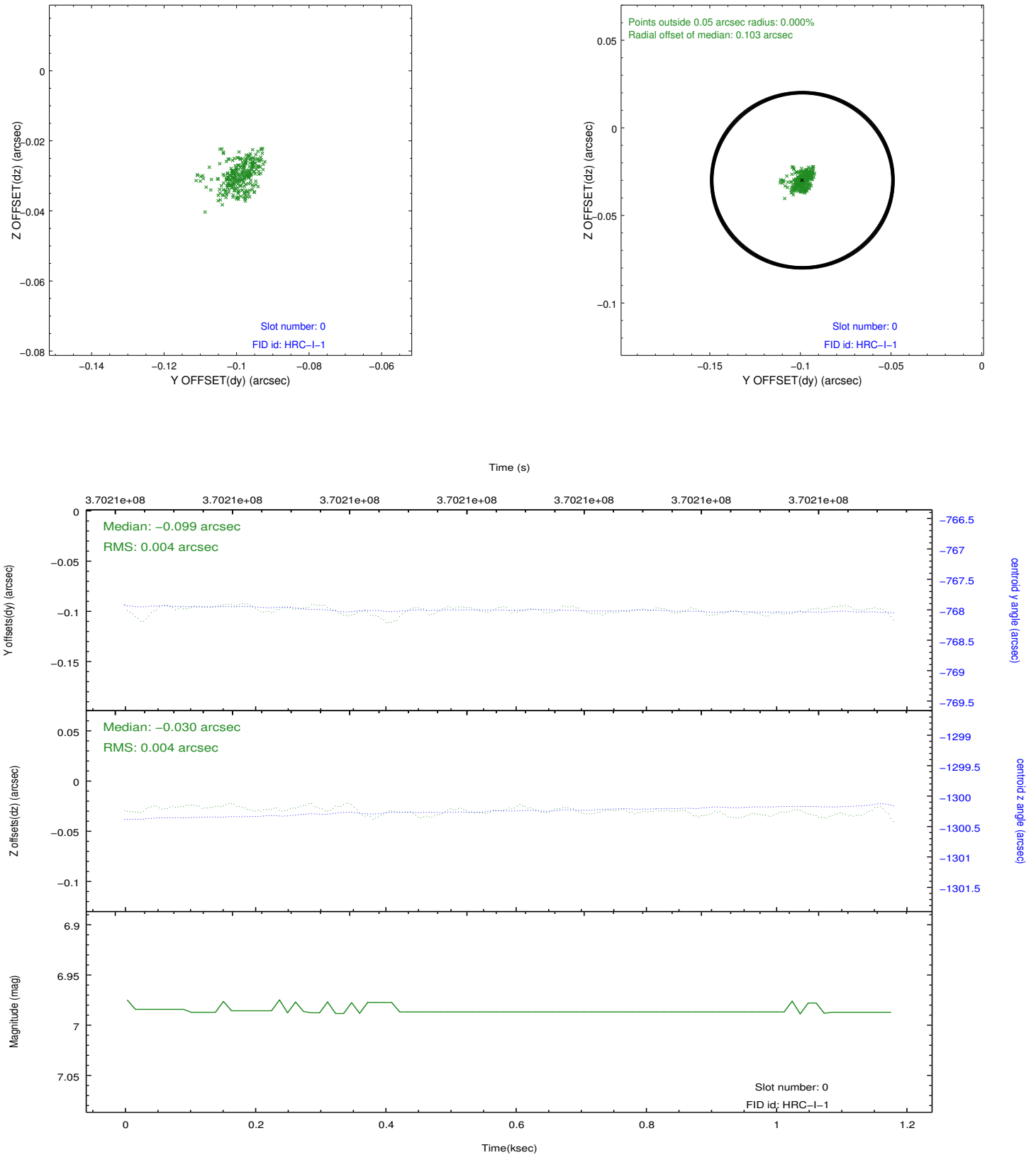


2.4.5 Slot 7

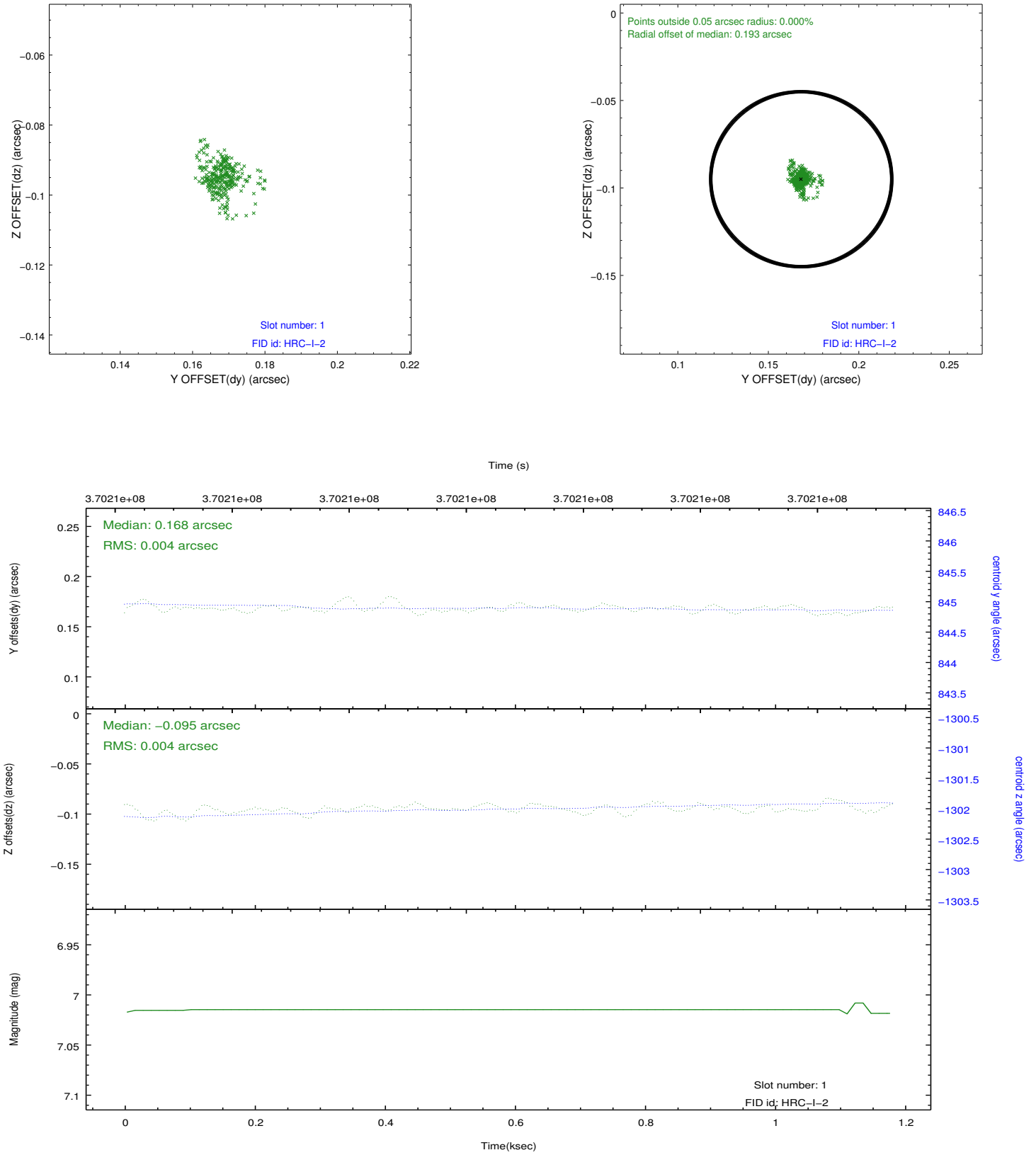


2.5 FID Slots

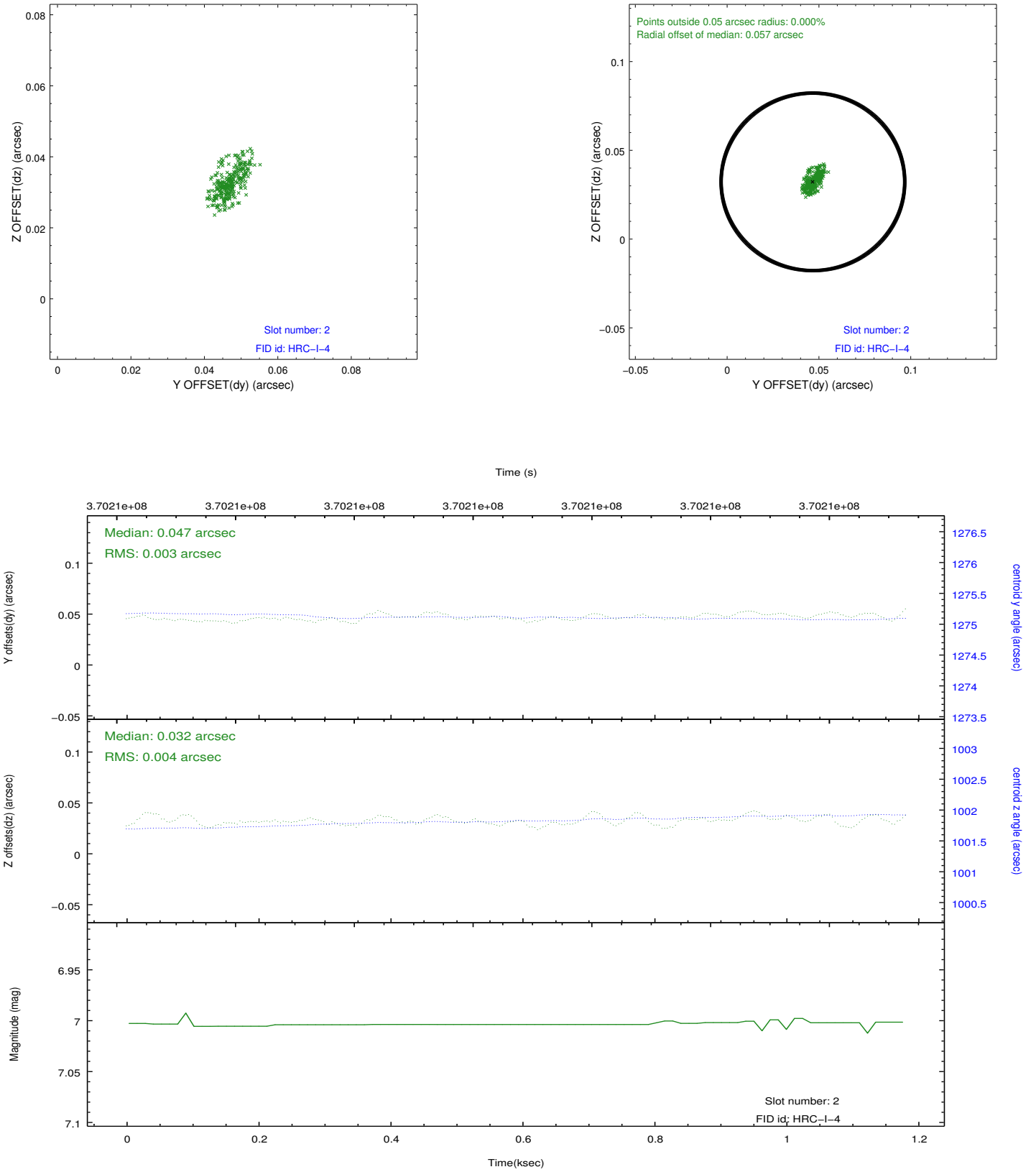
2.5.1 Slot 0



2.5.2 Slot 1



2.5.3 Slot 2



A Summary

A.1 Status

V&V Scientist	Beth Sundheim
V&V Date (YYYY-MM-DD)	2012.08.21
V&V Edition	1
V&V Disposition and Status	OK
V&V Charge Time	1.1820813091993

A.2 Comments