

V&V Reference Report

L2 ASCDS Version : 8.4.4

Observation 9695 - L2 Version 2
Chandra X-Ray Center

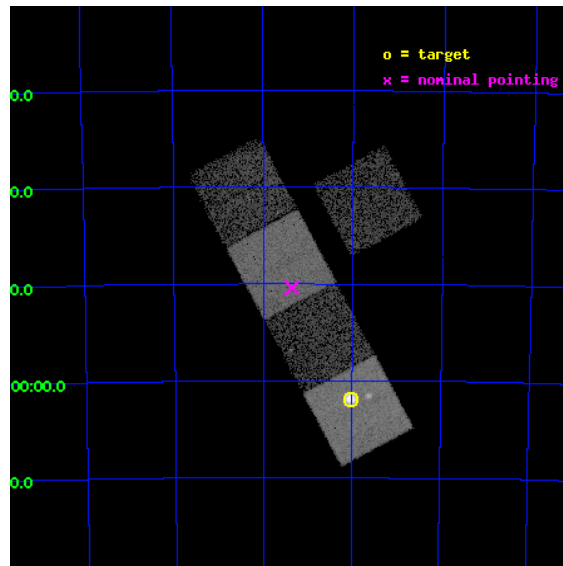
L2 Processing Date : May 9 2012

Contents

1	Front	2
2	OBI	3
2.1	OBI	3
2.1.1	Images	3
2.1.2	Bias	3
2.1.3	Parameters	4
2.1.4	Events	4
2.2	Compared Parameters	5
2.3	Aspect	6
2.4	Star Slots	9
2.4.1	Slot 3	9
2.4.2	Slot 4	10
2.4.3	Slot 5	11
2.4.4	Slot 6	12
2.4.5	Slot 7	13
2.5	FID Slots	14
2.5.1	Slot 0	14
2.5.2	Slot 1	15
2.5.3	Slot 2	16
A	Summary	17
A.1	Status	17
A.2	Comments	17

1 Front

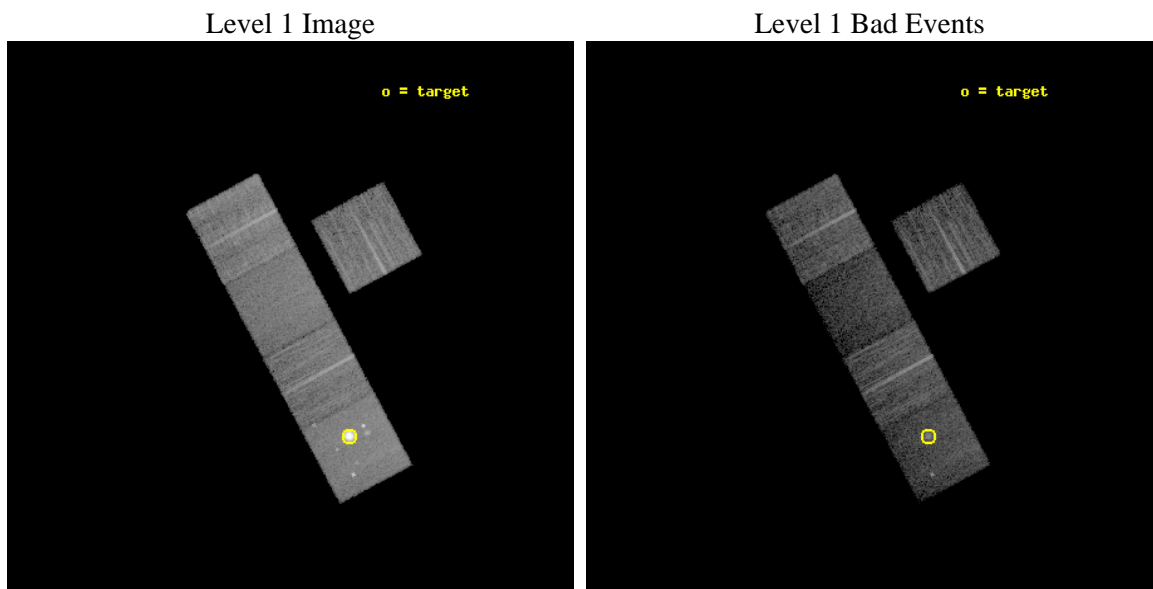
seq_num	590473	Sequence number
obs_id	9695	Observation id
title	AO9 Calibration Observations of E0102-72	Proposal title
observer	Dr. CXC Calibration	Principal investigator
object	E0102-72 S1,-120,13.29,0,0	Source name
dtcycle	0	
cycle	P	events from which exps? Prim/Second/Both
ra_targ	16.01	Observer's specified target RA [deg]
dec_targ	-72.032028	Observer's specified target Dec [deg]
ra_nom	16.340443685909	Nominal RA [deg]
dec_nom	-71.840234047583	Nominal Dec [deg]
roll_nom	241.77458859677	Nominal Roll [deg]
revision	2	Processing version of data
ontime	8031.6315469146	Sum of GTIs [s]
livetime	7926.692367953	Livetime [s]
ontime3	8028.4085066319	Sum of GTIs [s]
ontime5	8031.6315469146	Sum of GTIs [s]
ontime6	8031.5905069113	Sum of GTIs [s]
ontime7	8031.6725869179	Sum of GTIs [s]
ontime8	8031.5084269047	Sum of GTIs [s]
l2events	122029	Number of level 2 events



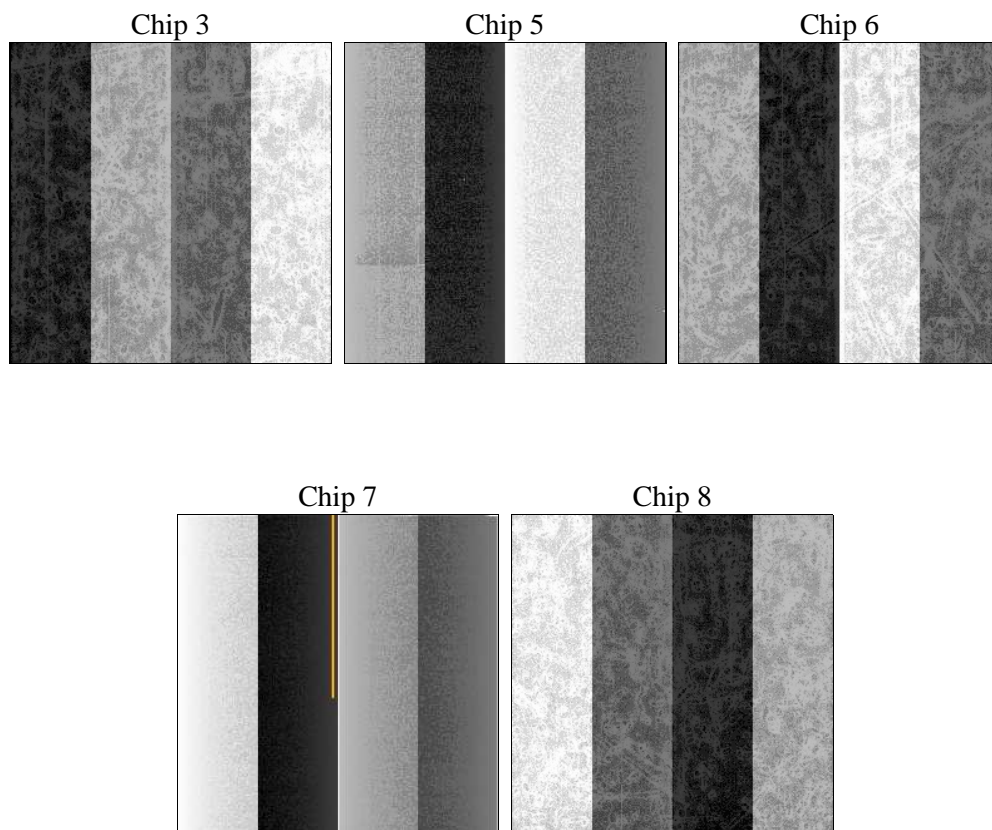
2 OBI

2.1 OBI

2.1.1 Images



2.1.2 Bias



2.1.3 Parameters

obi_num	0	Obi number	sched_exp_time	8000.000000	[s] Scheduled observation exposure time
ascdsver	8.4.4	Processing system revision	ontime	8031.6315469146	Sum of GTIs [s]
caldsver	4.4.9	 	ontime3	8028.4085066319	Sum of GTIs [s]
date	2012-05-09T04:03:37	Date and time of file creation	ontime5	8031.6315469146	Sum of GTIs [s]
revision	2	Processing version of data	ontime6	8031.5905069113	Sum of GTIs [s]
			ontime7	8031.6725869179	Sum of GTIs [s]
			ontime8	8031.5084269047	Sum of GTIs [s]
			l1events	375067	Number of level 1 events

2.1.4 Events

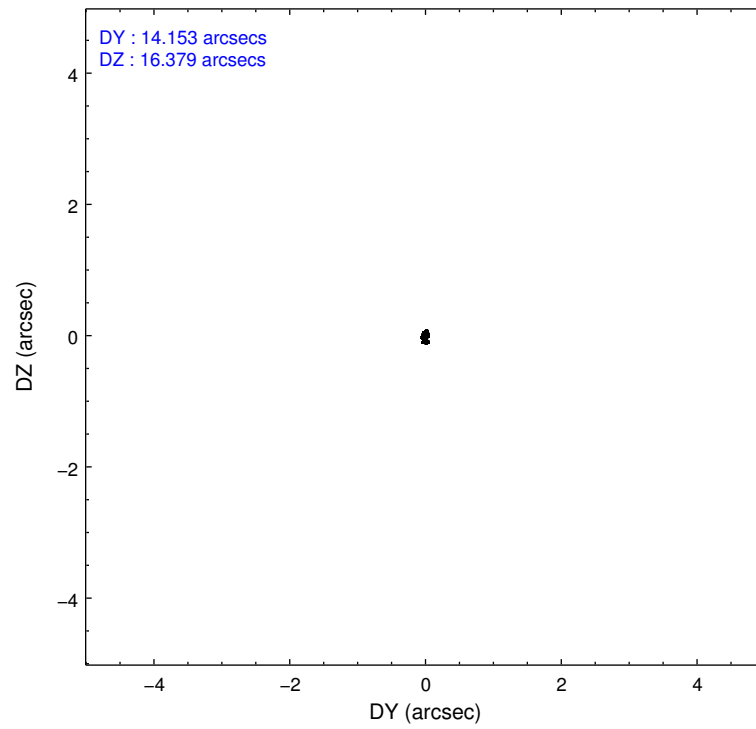
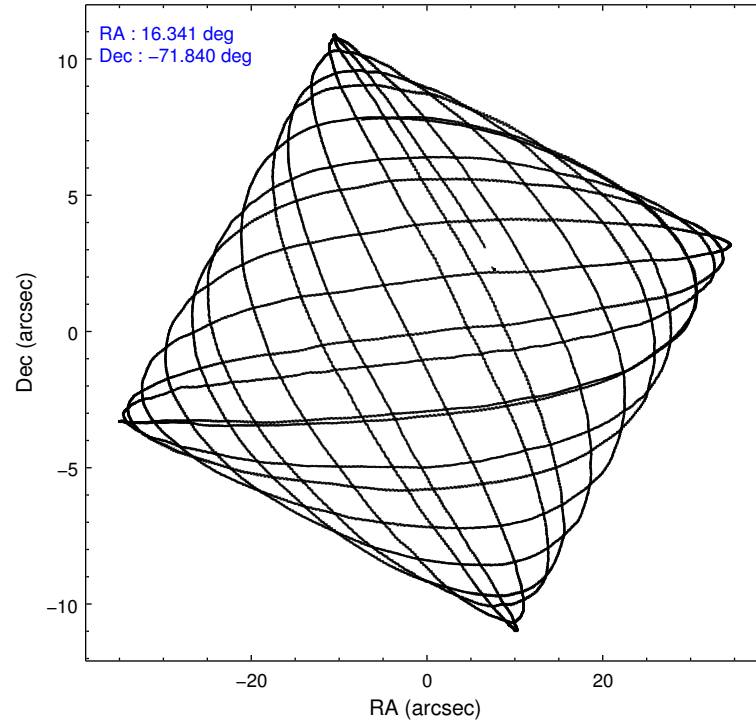
	ccd 3	ccd 5	ccd 6	ccd 7	ccd 8
level 1 events	58867	121442	60333	58273	76152
rejected events	53397	37317	54060	29573	57399
rejected %	90%	30%	89%	50%	75%

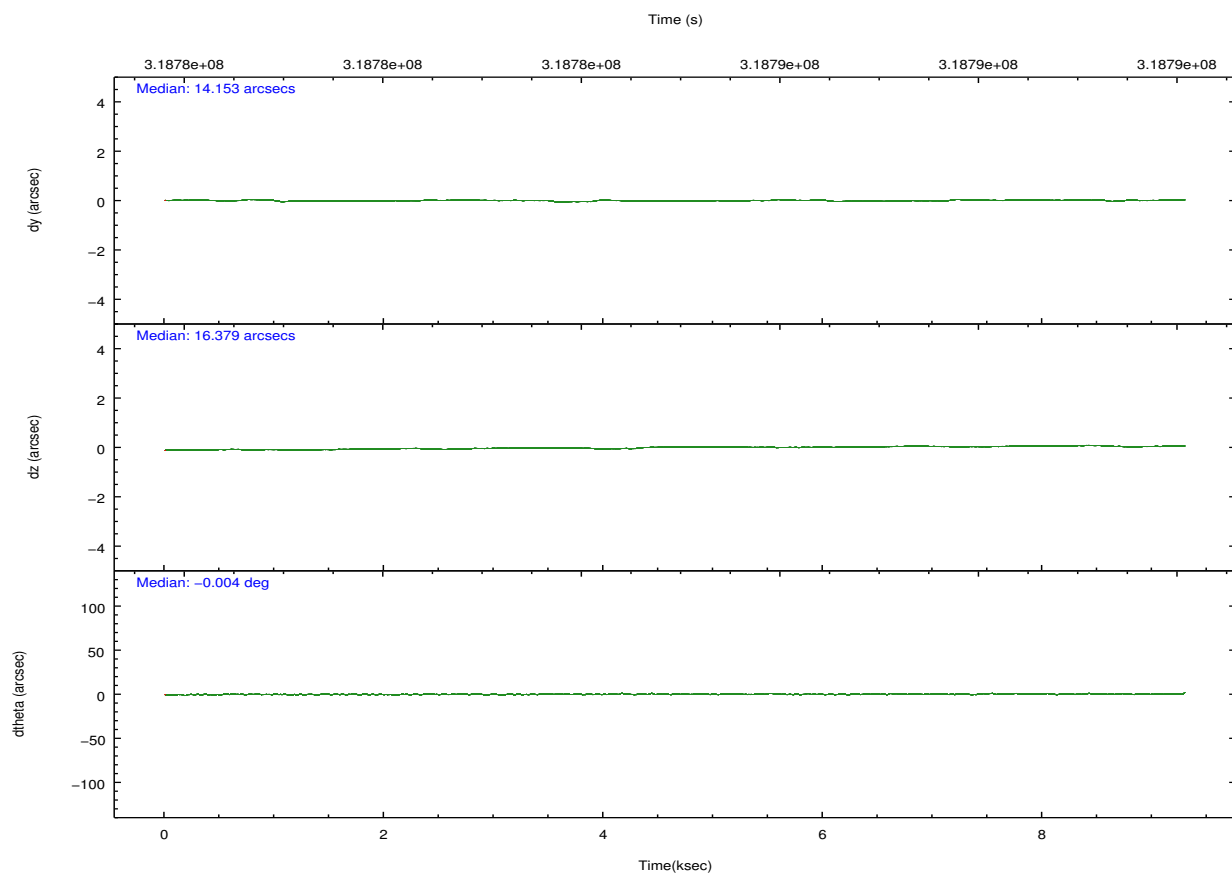
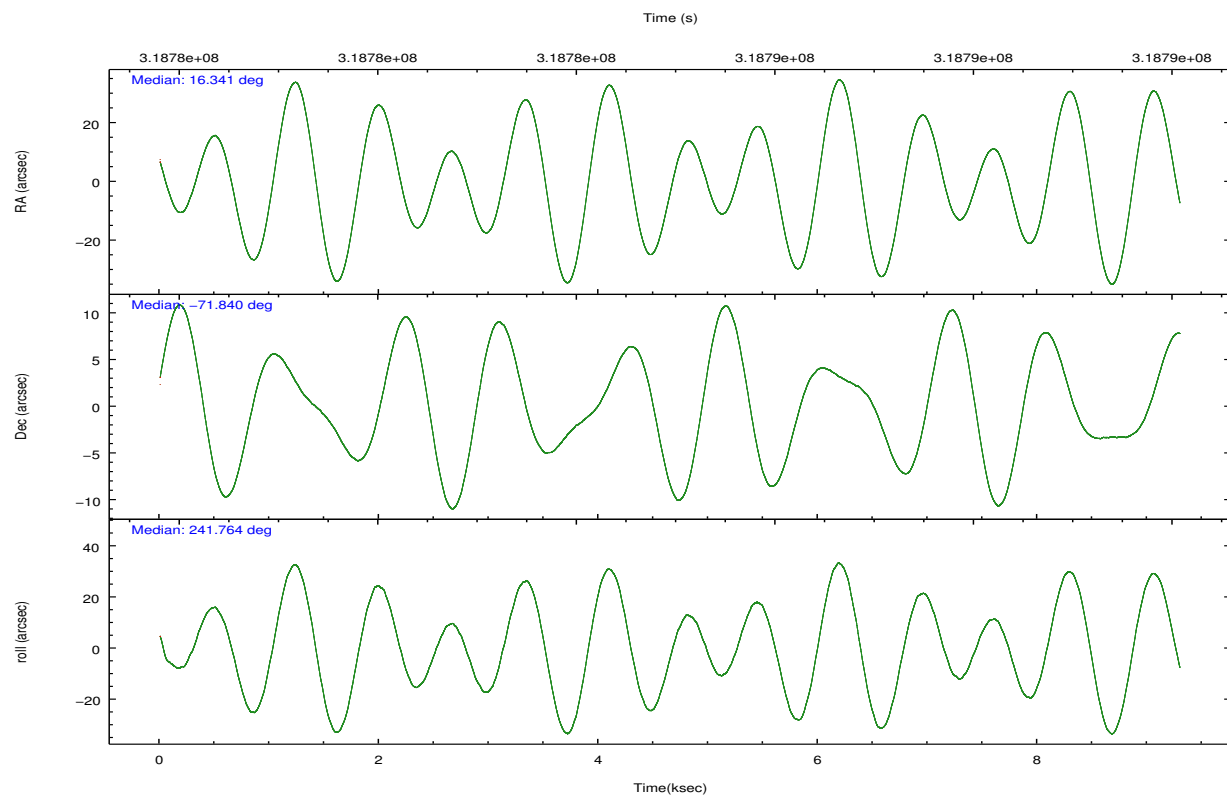
	ccd 3	ccd 5	ccd 6	ccd 7	ccd 8
grade 0 events	2021	24969	2352	2889	5081
	3%	20%	3%	4%	6%
grade 1 events	24	287	34	72	61
	0%	0%	0%	0%	0%
grade 2 events	1127	24572	1367	6169	4567
	1%	20%	2%	10%	5%
grade 3 events	624	5527	643	2779	2017
	1%	4%	1%	4%	2%
grade 4 events	659	5386	645	2712	1851
	1%	4%	1%	4%	2%
grade 5 events	2050	6775	2031	6221	3197
	3%	5%	3%	10%	4%
grade 6 events	1045	23742	1269	14178	5242
	1%	19%	2%	24%	6%
grade 7 events	51317	30184	51992	23253	54136
	87%	24%	86%	39%	71%

2.2 Compared Parameters

Parameter	Planned	Actual	Parameter	Planned	Actual
Instrument	ACIS	ACIS	Obspar format version number	7	7
Detector	ACIS-35678	ACIS-35678	Obspar file type	PREDICTED	ACTUAL
Grating	NONE	NONE	Obspar update status	NONE	UPDATED
Data mode	VFAINT	VFAINT	CCD I0 on	N	N
Observation mode	POINTING	POINTING	CCD I1 on	N	N
[deg] Pointing RA	16.336458	16.34044368590945	CCD I2 on	N	N
[deg] Pointing Dec	-71.812975	-71.84023404758305	CCD I3 on	O1	Y
[deg] Pointing Roll	241.614173	241.7745885967673	CCD S0 on	N	N
[s] Window start time (MET)	312854465.184000	312854465.184000	CCD S1 on	Y	Y
[s] Window stop time (MET)	325900865.184000	325900865.184000	CCD S2 on	Y	Y
[mm] SIM focus pos	-0.684267	-0.6828225247311905	CCD S3 on	Y	Y
[mm] SIM defocus	0	0.001444936568705701	CCD S4 on	Y	Y
[mm] SIM translation stage pos	-190.132523	-190.1400660498719	CCD S5 on	N	N
[mm] SIM translation stage offset	0	0.00754346686406393	Number of optional ACIS chips dropped	0	0
[s] Observation start time (MET)	318781593.184000	318780111.48529	On-chip summing requested	N	N
Observation start date	2008-02-07T14:25:28	2008-02-07T14:01:51	Subarray requested	NONE	NONE
[s] Observation end time (MET)	318789593.184000	318789728.03575	Alternating exposures requested	N	N
Observation end date	2008-02-07T16:38:48	2008-02-07T16:42:08	[s] Primary exposure time	0.000000	3.1
Read mode	TIMED	TIMED			

2.3 Aspect



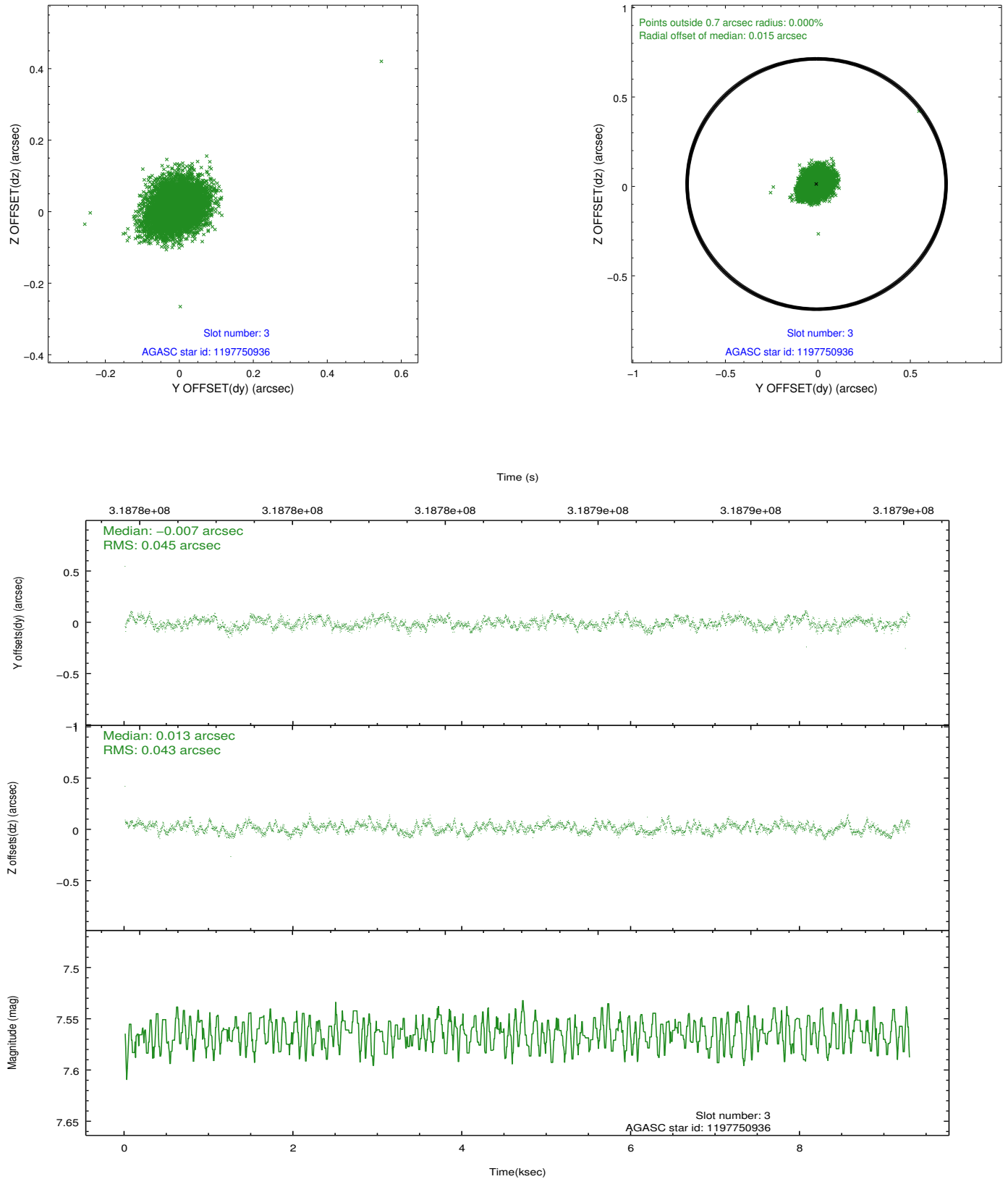


Slot Statistics

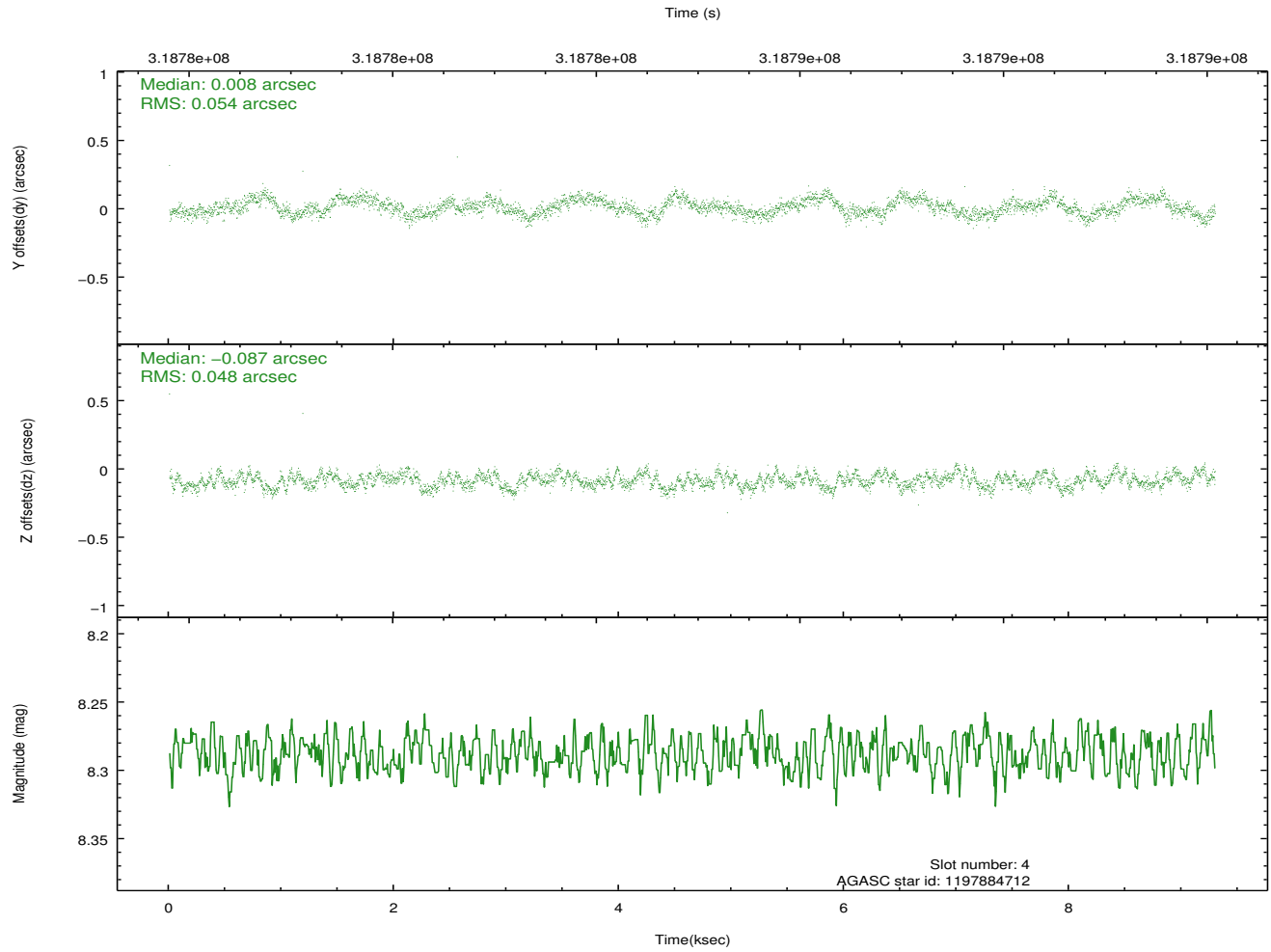
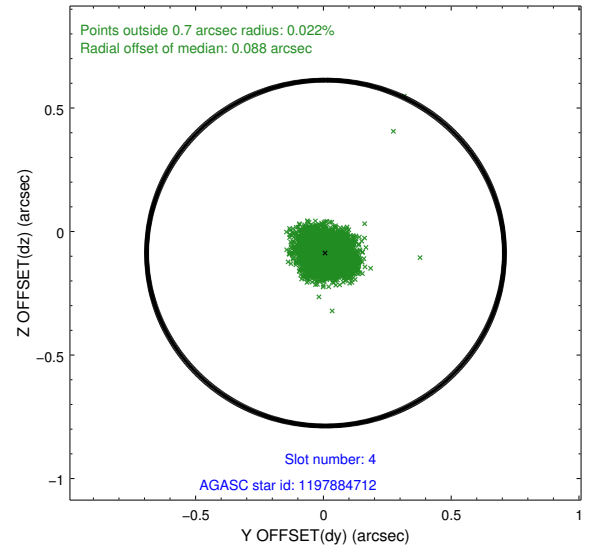
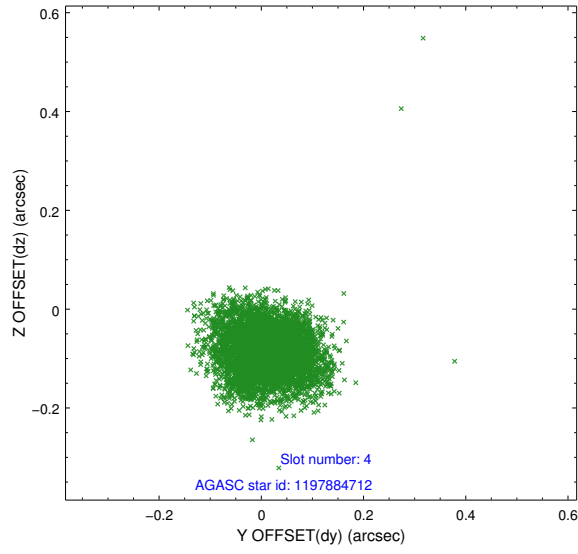
slot	status	id	mag	n_pts	med_dy	med_dz	dr1	dr2	ra	dec	mean_y	mean_z
0	FID	ACIS-S-2	6.87	2268	-0.047	0.002	0.006	0.011	0.000000	0.000000	-767.16	-1737.77
1	FID	ACIS-S-4	6.96	2267	0.146	0.022	0.005	0.010	0.000000	0.000000	2146.06	170.11
2	FID	ACIS-S-5	6.98	2267	-0.129	-0.016	0.006	0.011	0.000000	0.000000	-1819.32	164.43
3	GUIDE	1197750936	7.56	4534	-0.007	0.013	0.066	0.102	15.387940	-71.549550	-312.02	-1397.32
4	GUIDE	1197884712	8.29	4534	0.008	-0.087	0.077	0.120	16.087398	-72.252690	1523.50	512.34
5	GUIDE	1197885104	9.35	4533	-0.021	-0.083	0.154	0.224	17.845067	-72.189368	421.81	2115.46
6	GUIDE	1197885328	7.25	4535	0.060	0.133	0.060	0.096	16.283090	-71.733943	-221.65	-187.11
7	GUIDE	1198283128	7.84	4534	-0.041	0.028	0.069	0.104	17.272580	-72.642428	2156.03	2308.29

2.4 Star Slots

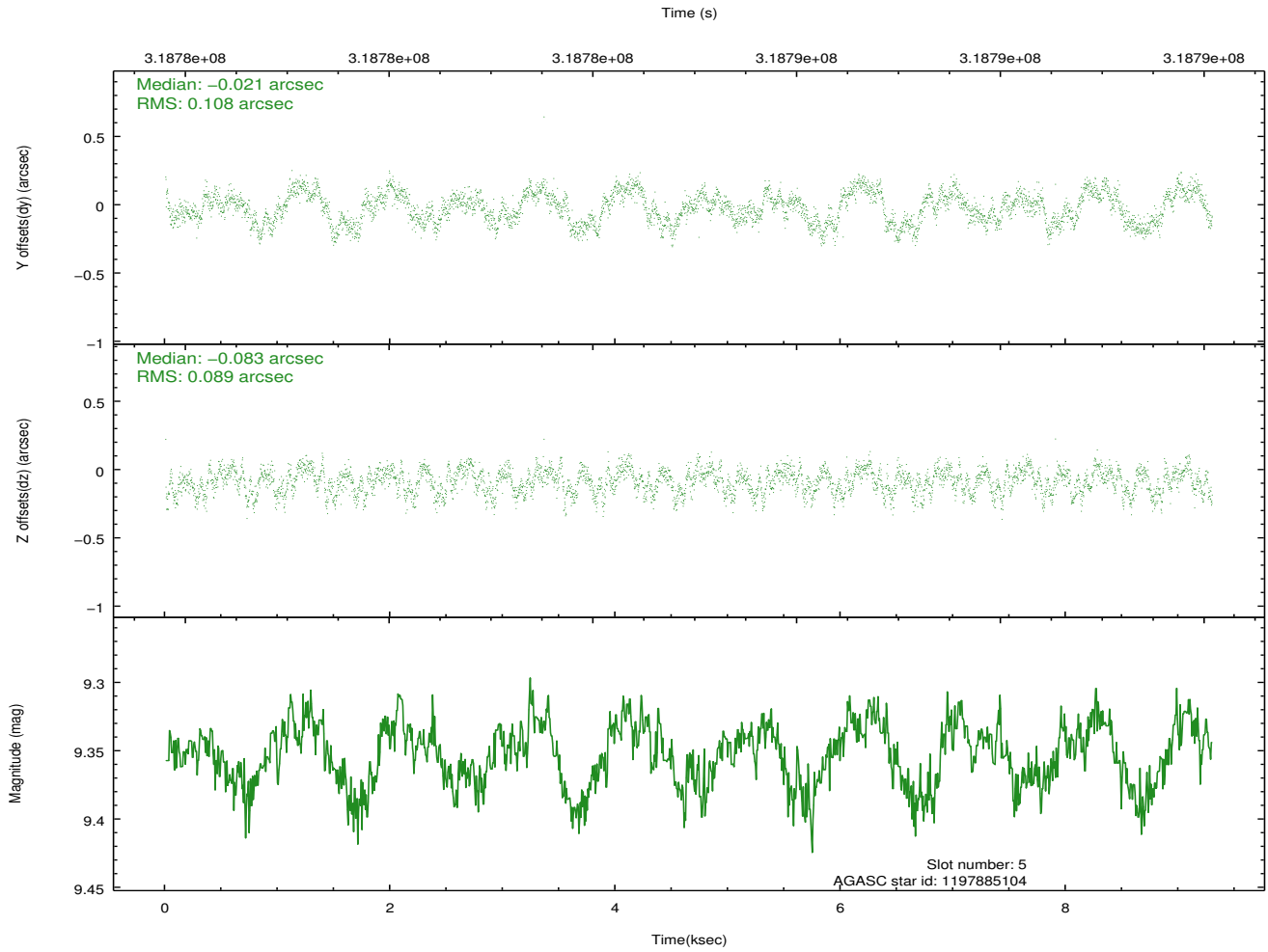
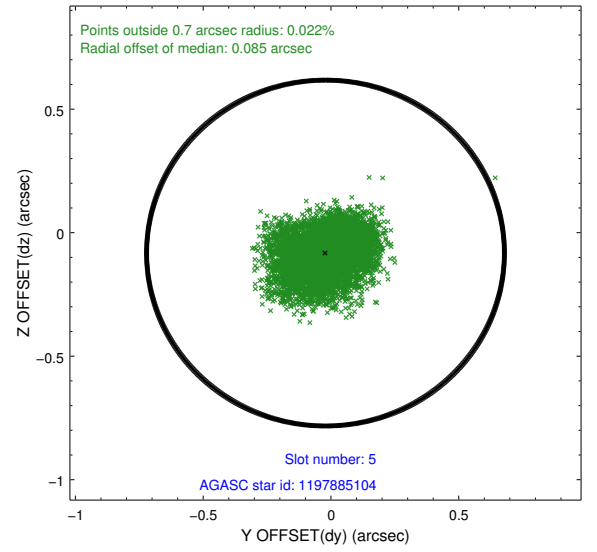
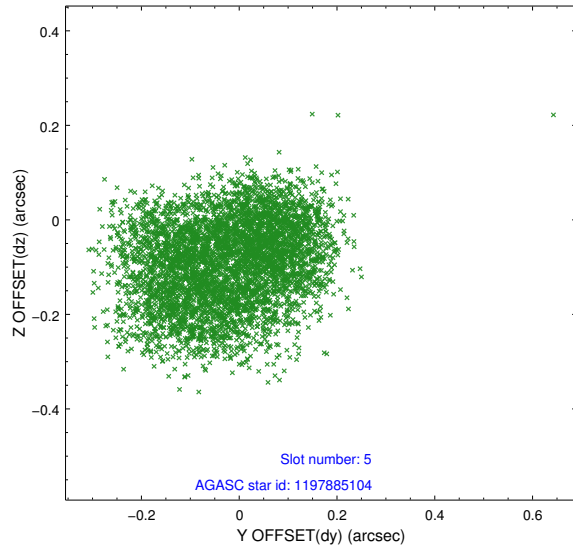
2.4.1 Slot 3



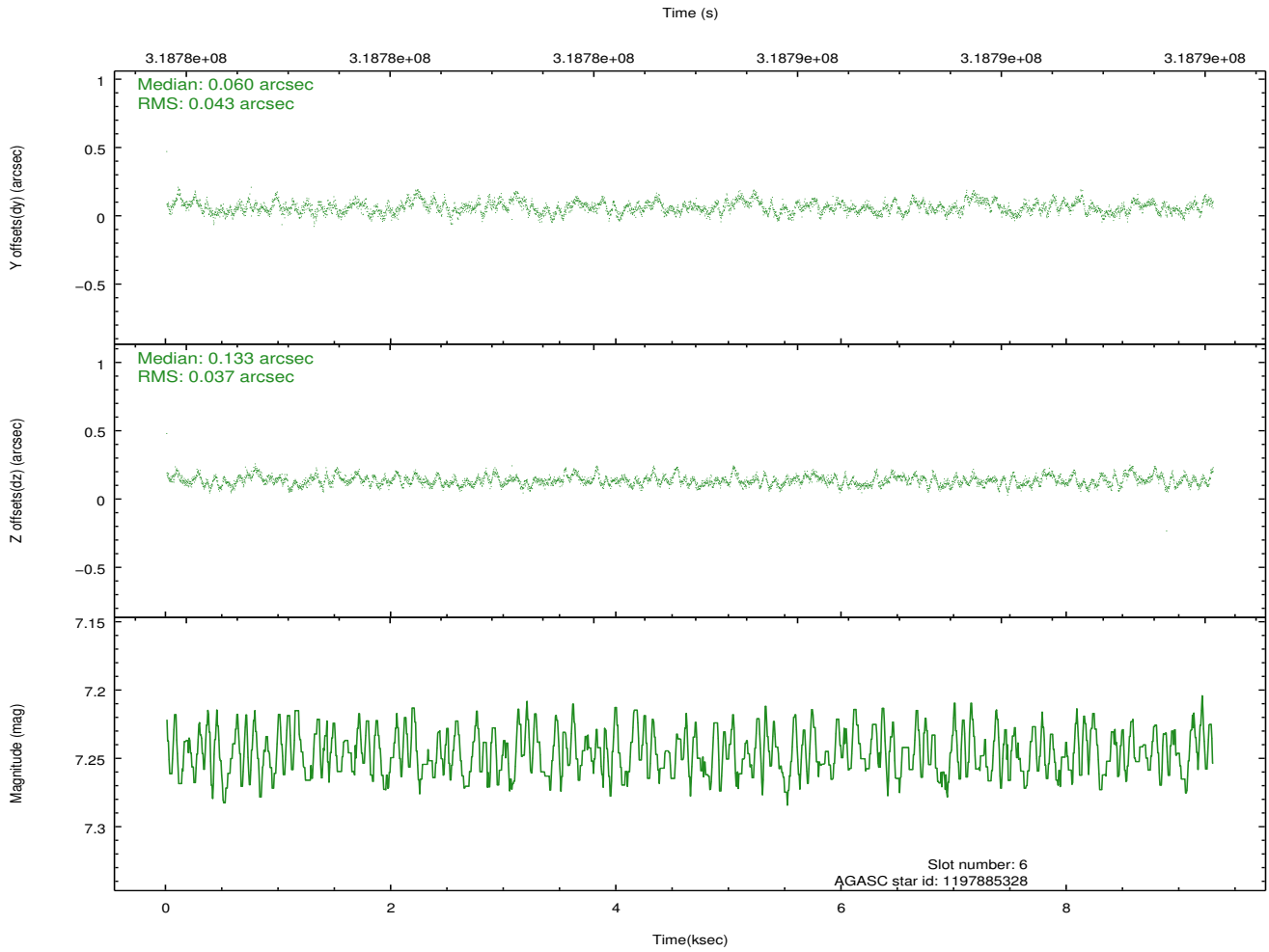
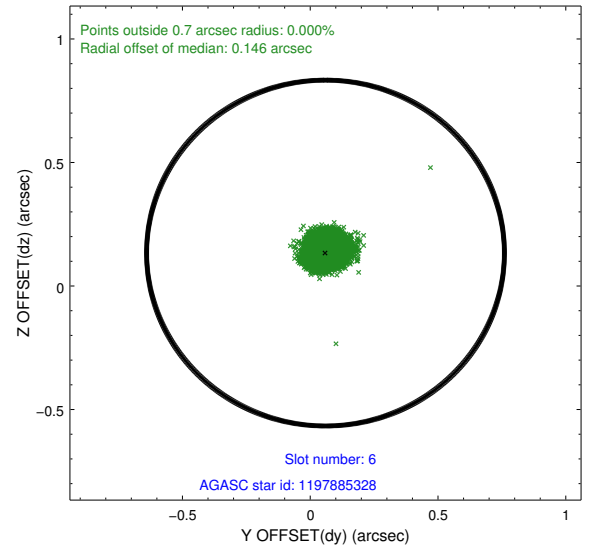
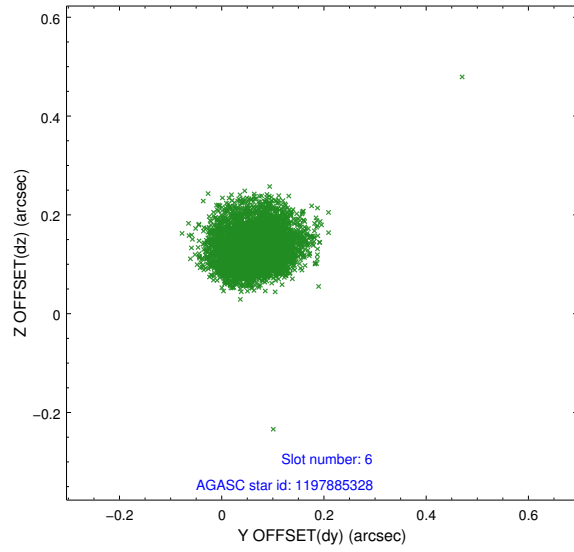
2.4.2 Slot 4



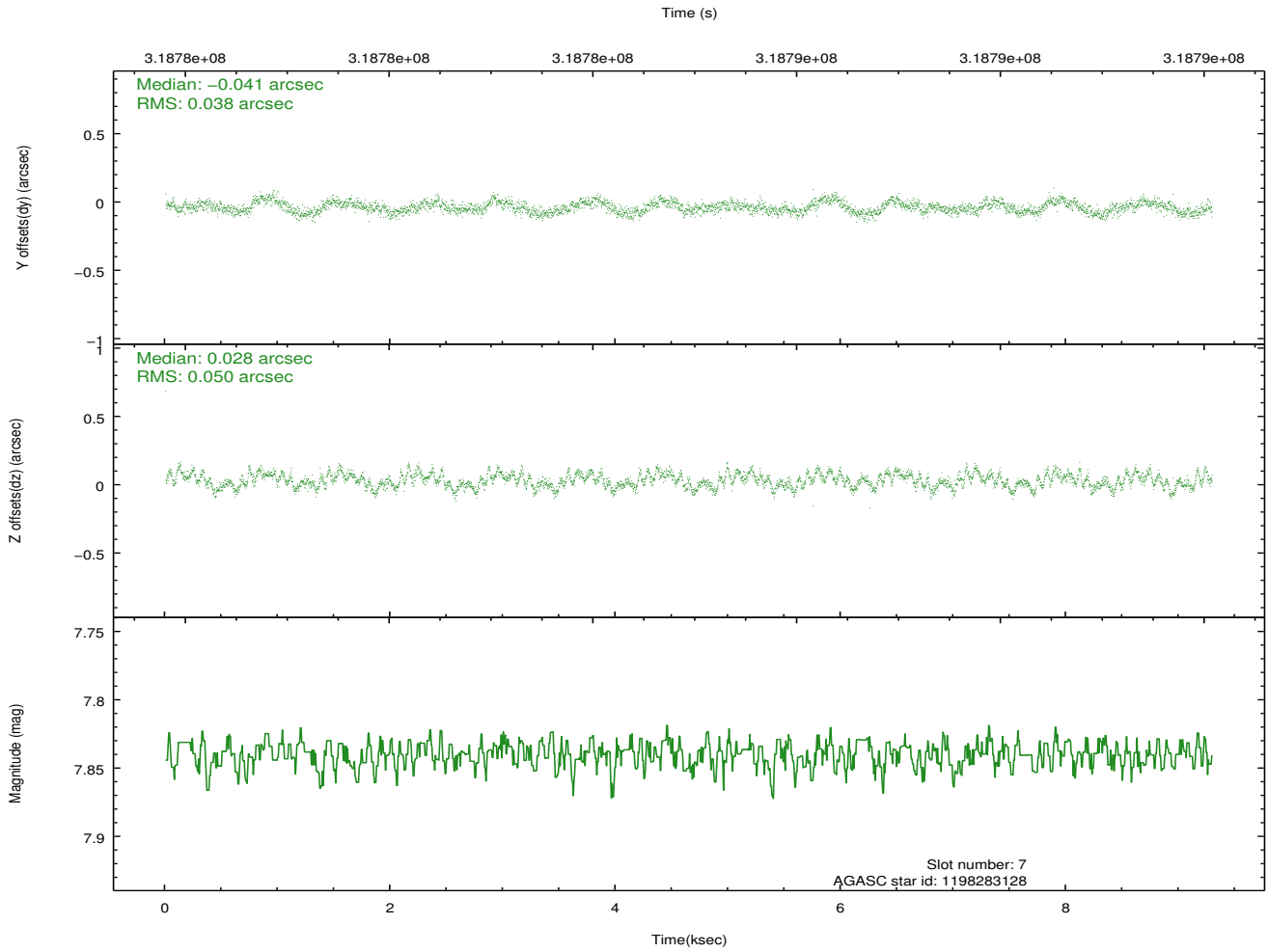
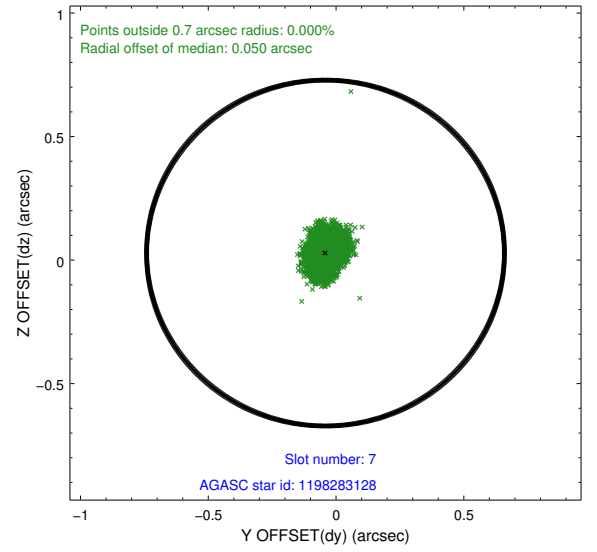
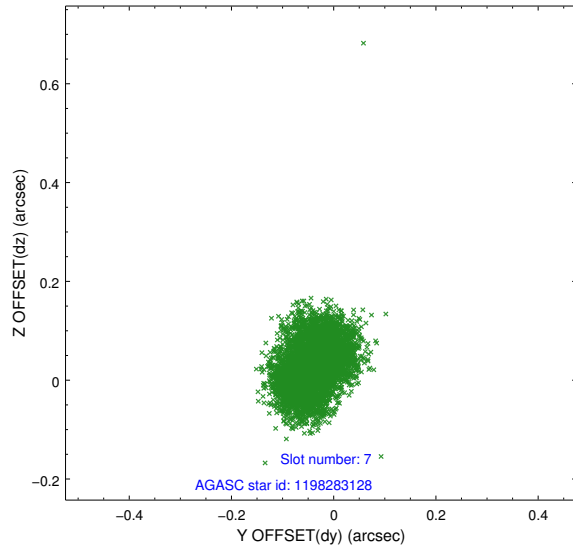
2.4.3 Slot 5



2.4.4 Slot 6

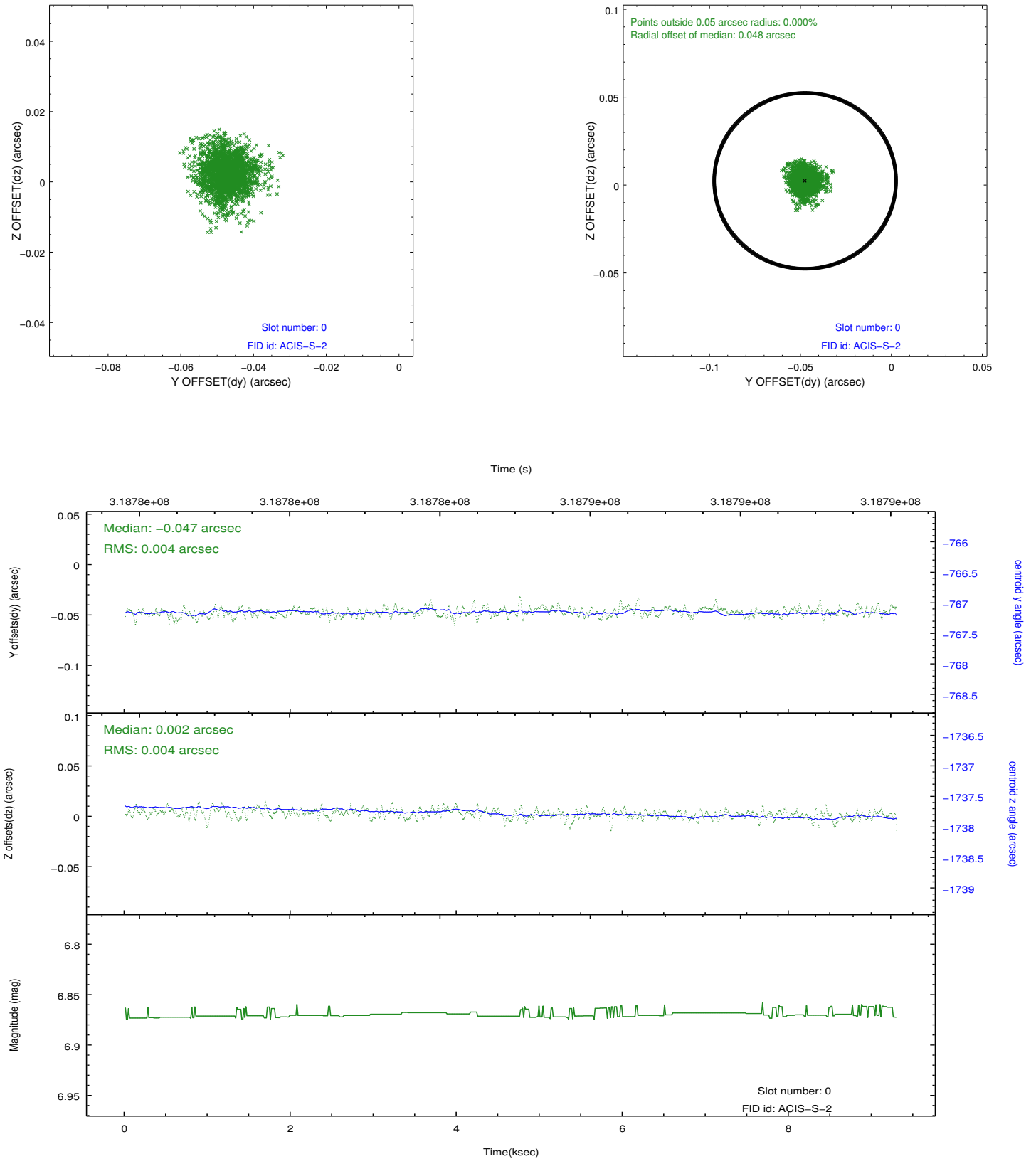


2.4.5 Slot 7

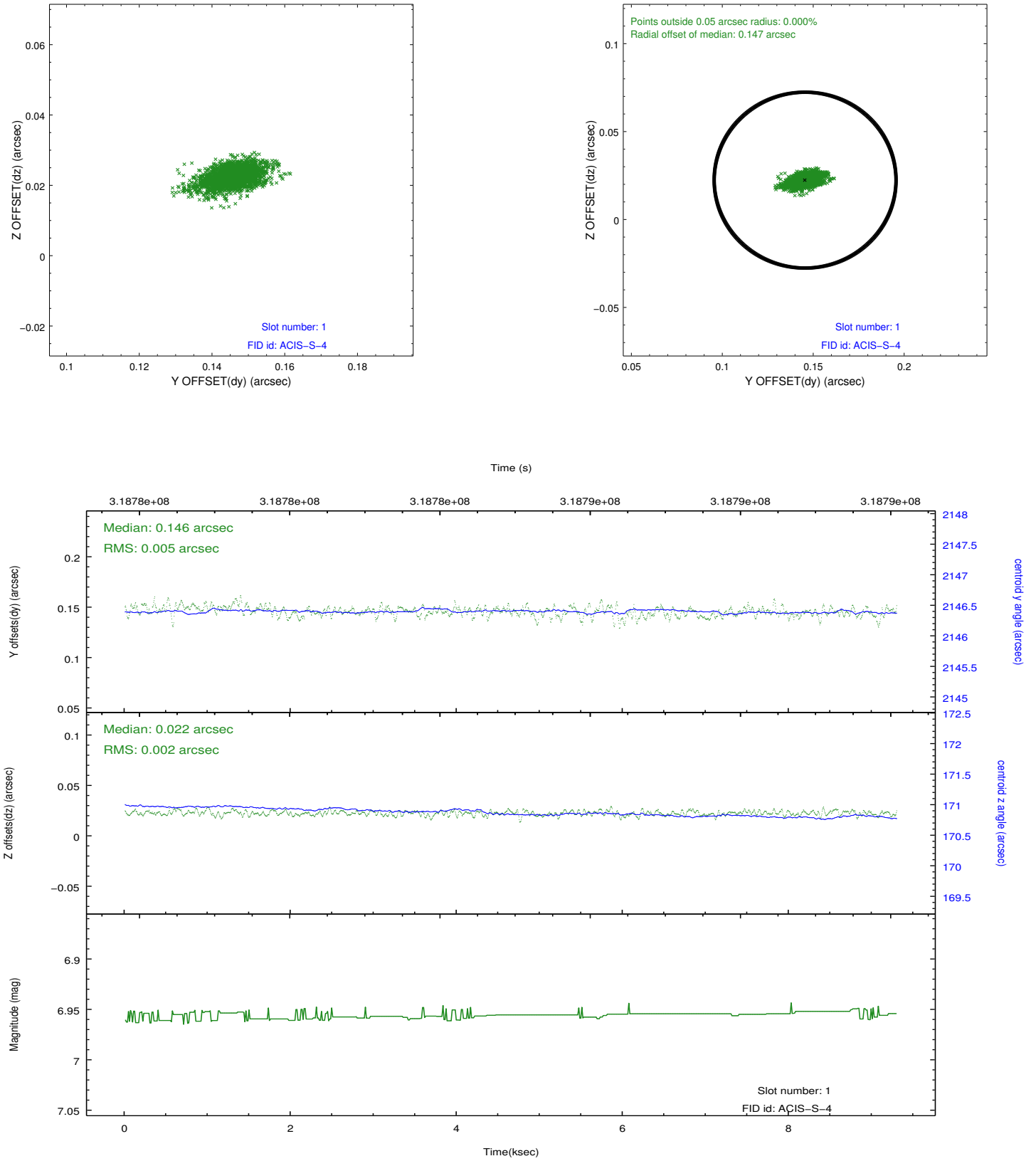


2.5 FID Slots

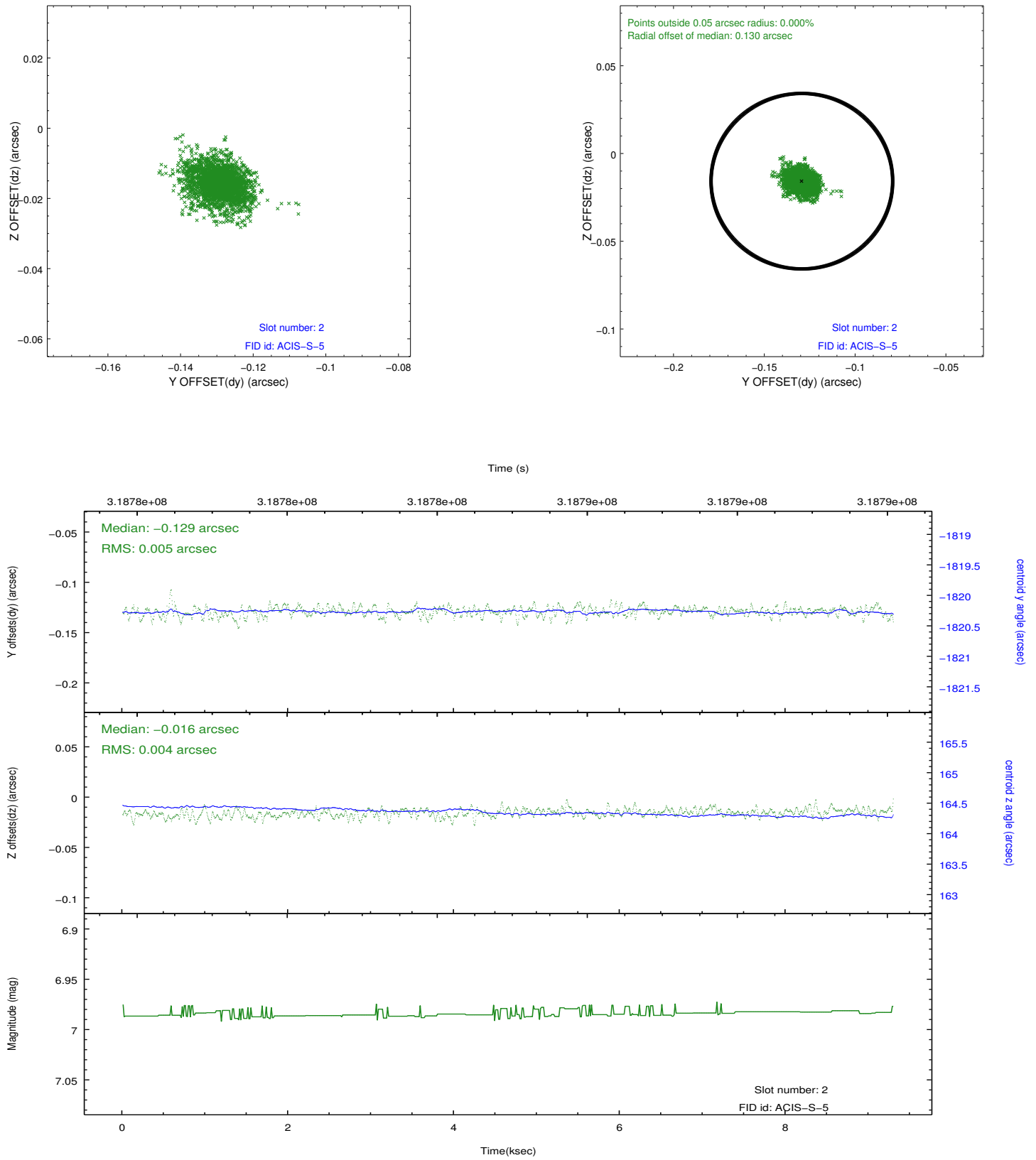
2.5.1 Slot 0



2.5.2 Slot 1



2.5.3 Slot 2



A Summary

A.1 Status

V&V Scientist	Beth Sundheim
V&V Date (YYYY-MM-DD)	2012.05.11
V&V Edition	1
V&V Disposition and Status	OK
V&V Charge Time	8.03210006

A.2 Comments

Window preference met.