

V&V Reference Report

L2 ASCDS Version : 8.4.4

Observation 9692 - L2 Version 2
Chandra X-Ray Center

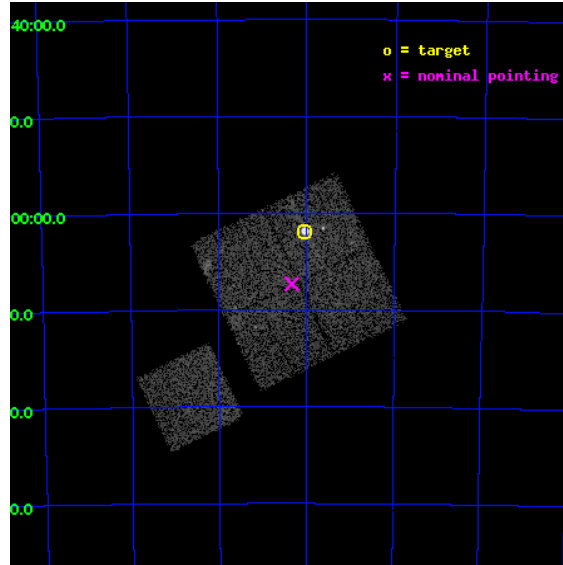
L2 Processing Date : May 9 2012

Contents

1	Front	2
2	OBI	3
2.1	OBI	3
2.1.1	Images	3
2.1.2	Bias	3
2.1.3	Parameters	4
2.1.4	Events	4
2.2	Compared Parameters	5
2.3	Aspect	6
2.4	Star Slots	9
2.4.1	Slot 3	9
2.4.2	Slot 4	10
2.4.3	Slot 5	11
2.4.4	Slot 6	12
2.4.5	Slot 7	13
2.5	FID Slots	14
2.5.1	Slot 0	14
2.5.2	Slot 1	15
2.5.3	Slot 2	16
A	Summary	17
A.1	Status	17
A.2	Comments	17

1 Front

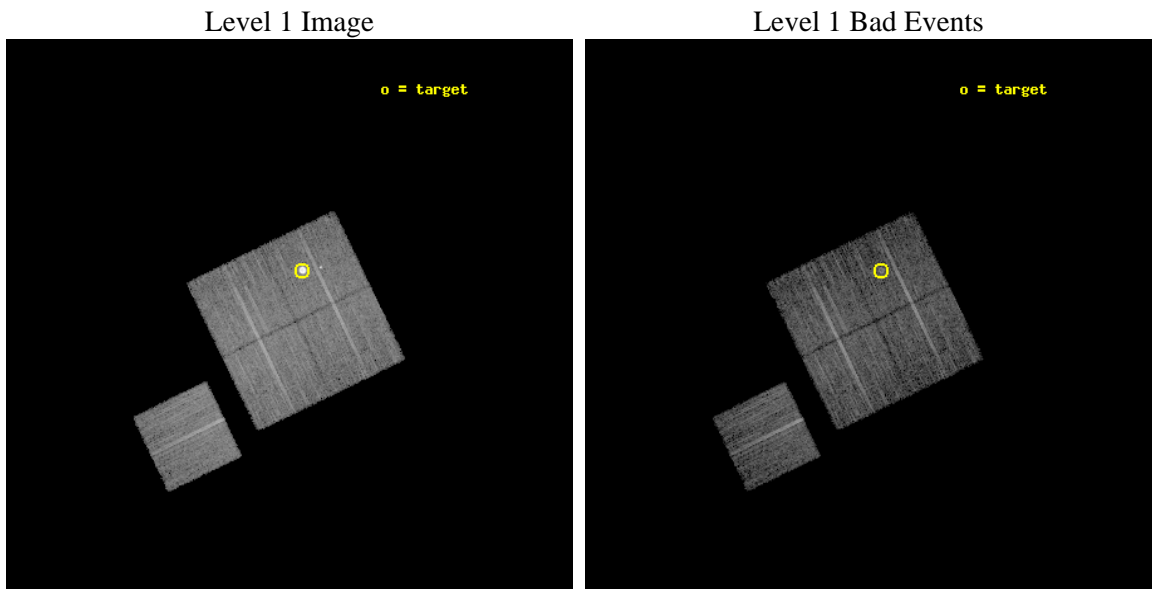
seq_num	590470	Sequence number
obs_id	9692	Observation id
title	AO9 Calibration Observations of E0102-72	Proposal title
observer	Dr. CXC Calibration	Principal investigator
object	E0102-72 I1,-120,-4.0,-3.68,0	Source name
dtcycle	0	
cycle	P	events from which exps? Prim/Second/Both
ra_targ	16.01	Observer's specified target RA [deg]
dec_targ	-72.032028	Observer's specified target Dec [deg]
ra_nom	16.083134518878	Nominal RA [deg]
dec_nom	-72.121983347769	Nominal Dec [deg]
roll_nom	244.25135200109	Nominal Roll [deg]
revision	2	Processing version of data
ontime	7773.6759210825	Sum of GTIs [s]
livetime	7672.1071222766	Livetime [s]
ontime0	7773.6348612309	Sum of GTIs [s]
ontime1	7773.6759210825	Sum of GTIs [s]
ontime2	7773.7169412374	Sum of GTIs [s]
ontime3	7773.7579812407	Sum of GTIs [s]
ontime6	7773.5938410759	Sum of GTIs [s]
l2events	46567	Number of level 2 events



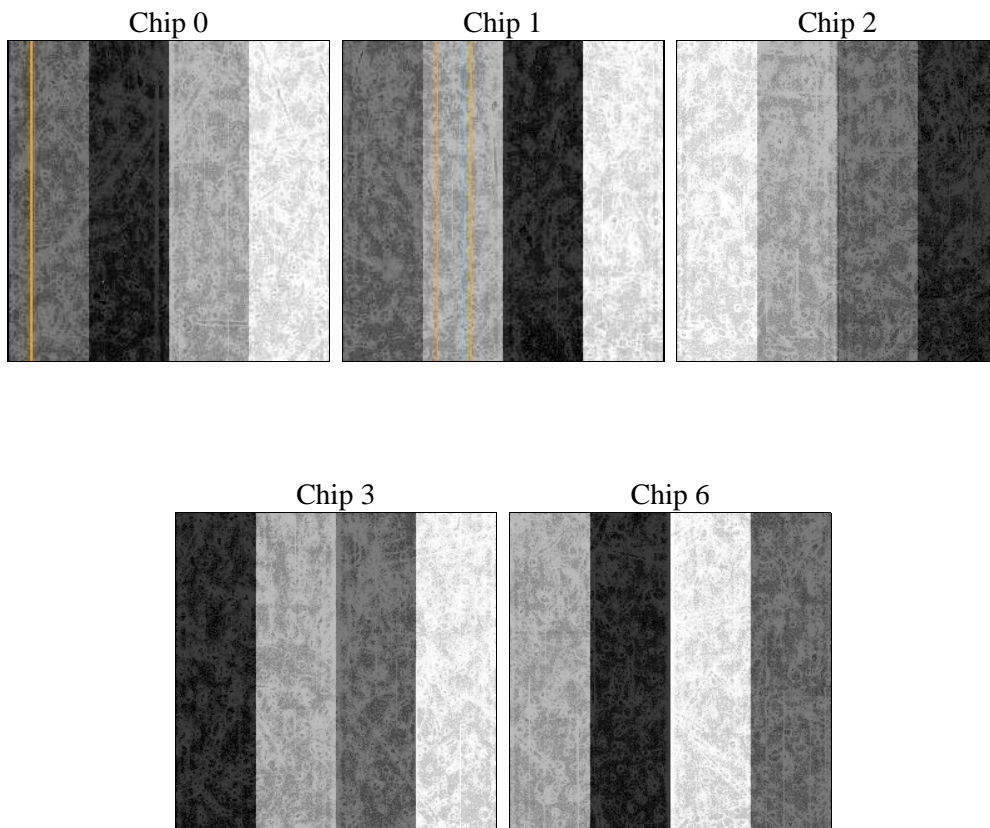
2 OBI

2.1 OBI

2.1.1 Images



2.1.2 Bias



2.1.3 Parameters

obi_num	0	Obi number	sched_exp_time	8000.000000	[s] Scheduled observation exposure time
ascdsver	8.4.4	Processing system revision	ontime	7773.6759210825	Sum of GTIs [s]
caldsver	4.4.9	 	ontime0	7773.6348612309	Sum of GTIs [s]
date	2012-05-09T03:08:26	Date and time of file creation	ontime1	7773.6759210825	Sum of GTIs [s]
revision	2	Processing version of data	ontime2	7773.7169412374	Sum of GTIs [s]
			ontime3	7773.7579812407	Sum of GTIs [s]
			ontime6	7773.5938410759	Sum of GTIs [s]
			l1events	311114	Number of level 1 events

2.1.4 Events

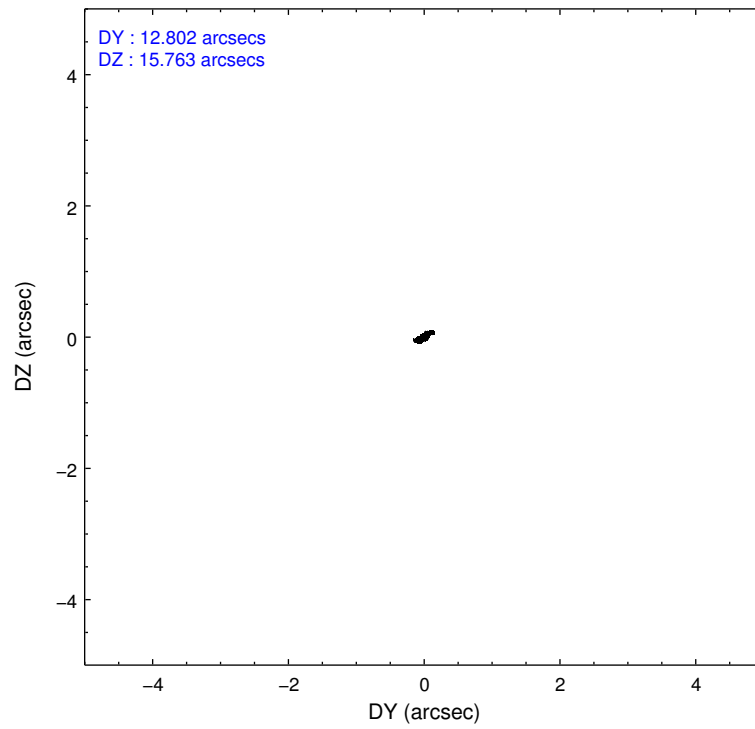
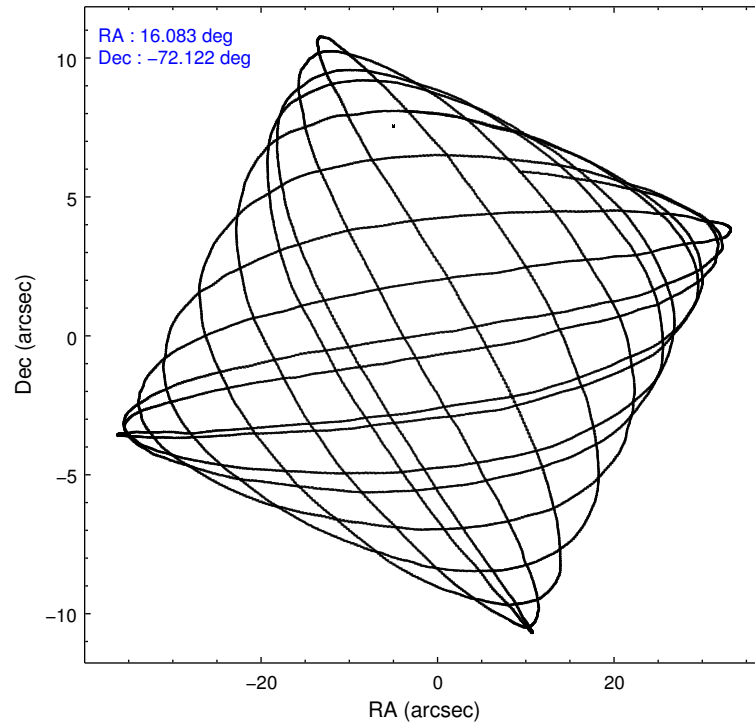
	ccd 0	ccd 1	ccd 2	ccd 3	ccd 6
level 1 events	54976	75027	62328	59079	59704
rejected events	48847	46288	56189	53015	53701
rejected %	88%	61%	90%	89%	89%

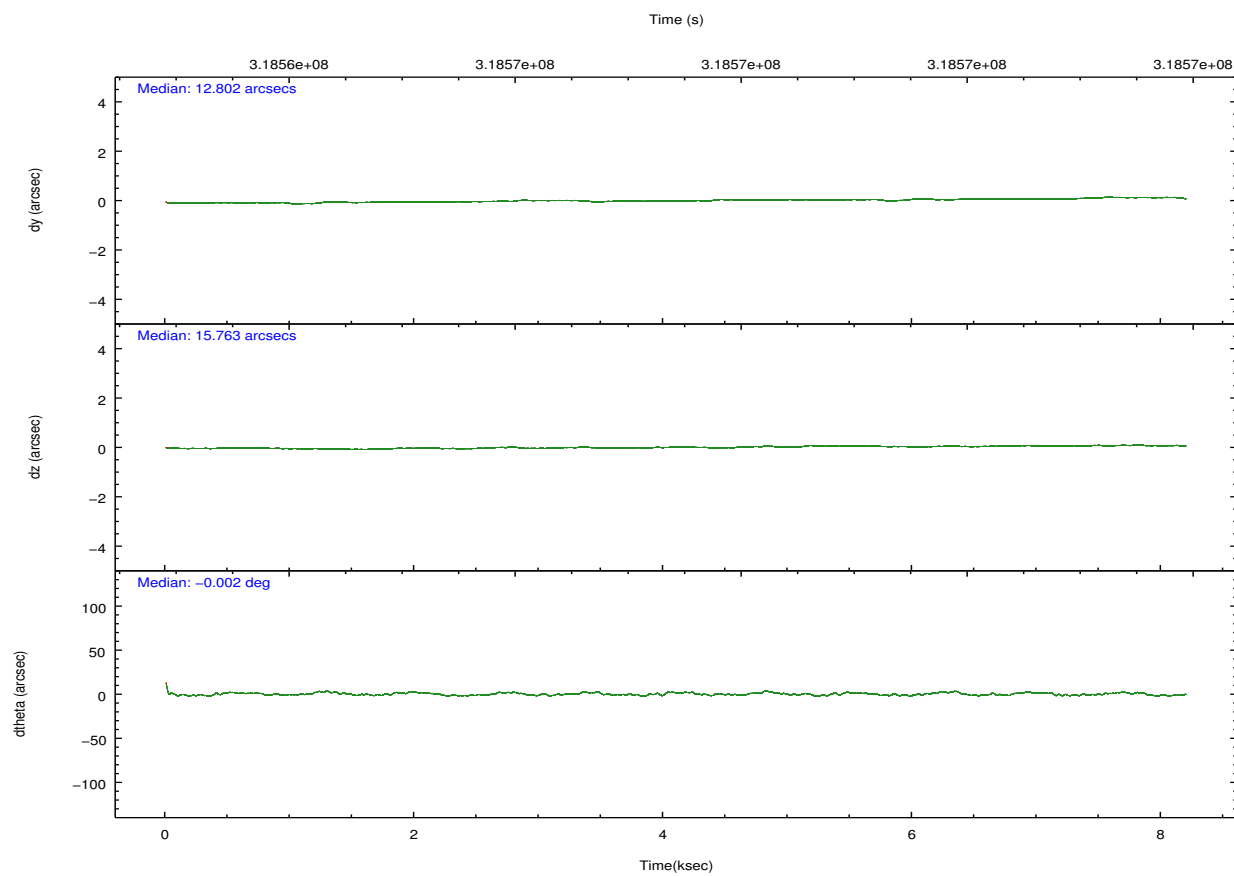
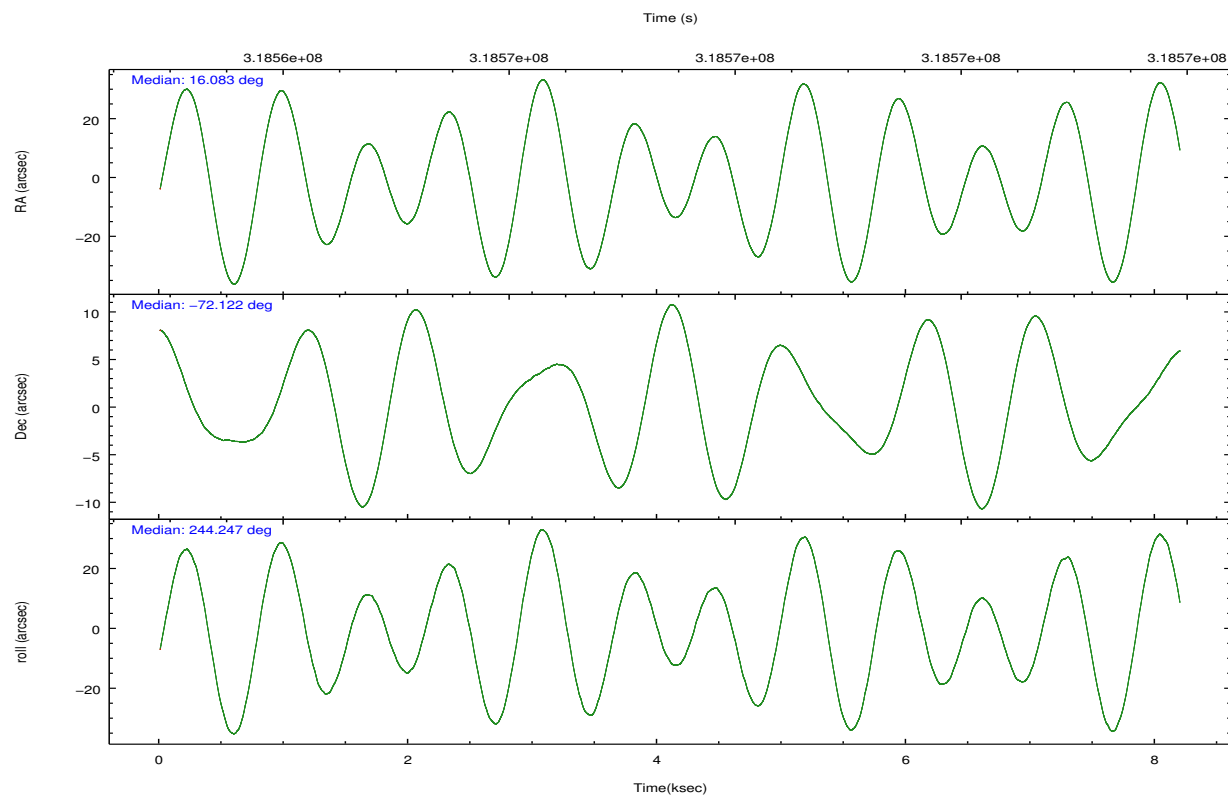
	ccd 0	ccd 1	ccd 2	ccd 3	ccd 6
grade 0 events	2321	21952	2508	2580	2170
	4%	29%	4%	4%	3%
grade 1 events	36	205	34	38	30
	0%	0%	0%	0%	0%
grade 2 events	1449	3116	1419	1300	1300
	2%	4%	2%	2%	2%
grade 3 events	657	1156	610	601	653
	1%	1%	0%	1%	1%
grade 4 events	620	1094	669	592	679
	1%	1%	1%	1%	1%
grade 5 events	1688	1978	1641	2007	1920
	3%	2%	2%	3%	3%
grade 6 events	1084	1429	936	992	1206
	1%	1%	1%	1%	2%
grade 7 events	47121	44097	54511	50969	51746
	85%	58%	87%	86%	86%

2.2 Compared Parameters

Parameter	Planned	Actual	Parameter	Planned	Actual
Instrument	ACIS	ACIS	Obspar format version number	7	7
Detector	ACIS-01236	ACIS-01236	Obspar file type	PREDICTED	ACTUAL
Grating	NONE	NONE	Obspar update status	NONE	UPDATED
Data mode	VFAINT	VFAINT	Number of optional ACIS chips dropped	0	0
Observation mode	POINTING	POINTING	On-chip summing requested	N	N
[deg] Pointing RA	16.075919	16.08313451887832	Subarray requested	NONE	NONE
[deg] Pointing Dec	-72.094594	-72.12198334776861	Alternating exposures requested	N	N
[deg] Pointing Roll	244.035800	244.2513520010937	[s] Primary exposure time	0.000000	3.1
[s] Window start time (MET)	312854465.184000	312854465.184000			
[s] Window stop time (MET)	325900865.184000	325900865.184000			
[mm] SIM focus pos	-0.782348	-0.7809083437167272			
[mm] SIM defocus	0	0.001439871863259334			
[mm] SIM translation stage pos	-233.592463	-233.5874344608287			
[mm] SIM translation stage offset	0	-0.005018542100998502			
[s] Observation start time (MET)	318563534.184000	318563157.92475			
Observation start date	2008-02-05T01:51:09	2008-02-05T01:45:57			
[s] Observation end time (MET)	318571534.184000	318571667.47517			
Observation end date	2008-02-05T04:04:29	2008-02-05T04:07:47			
Read mode	TIMED	TIMED			

2.3 Aspect



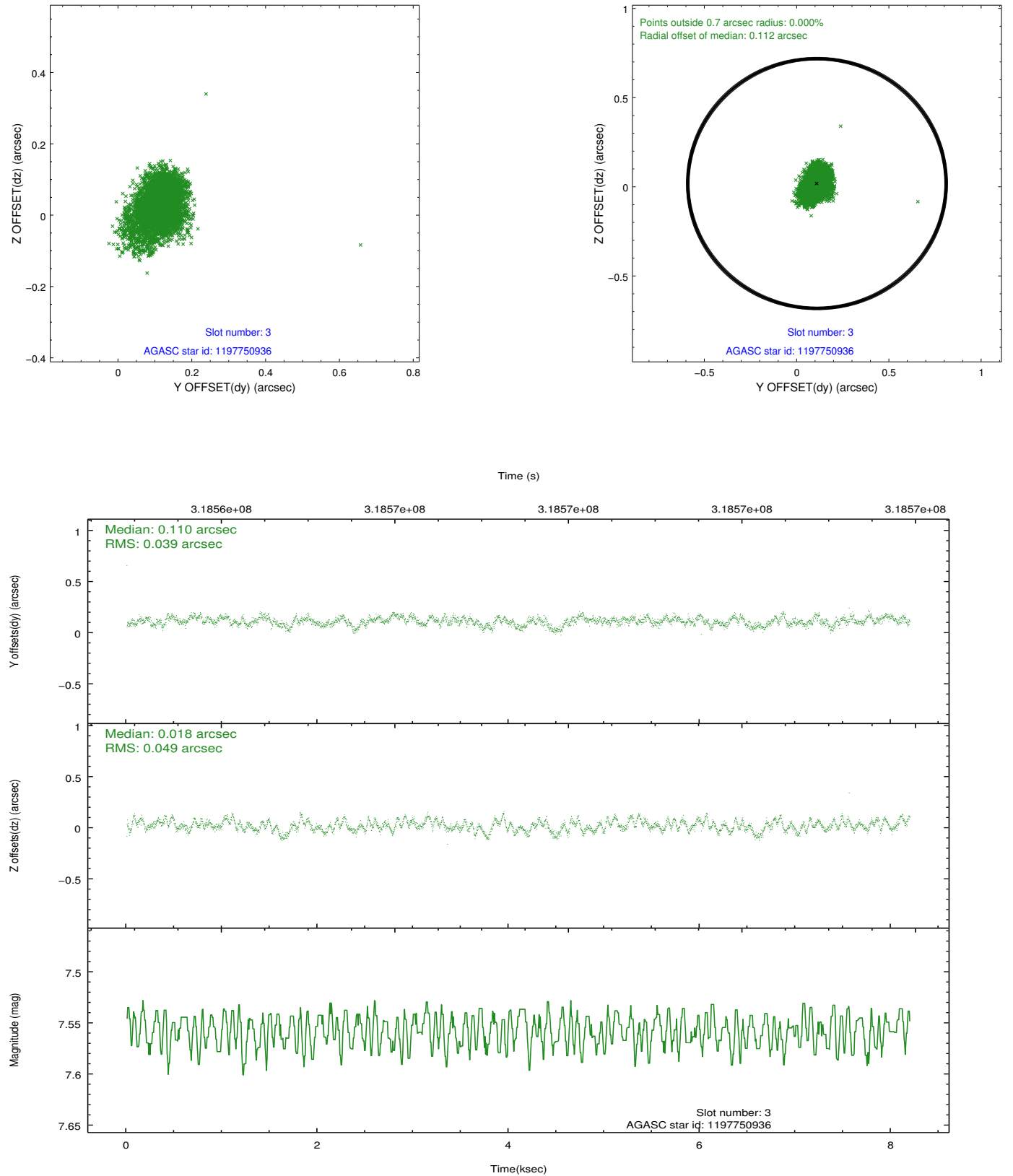


Slot Statistics

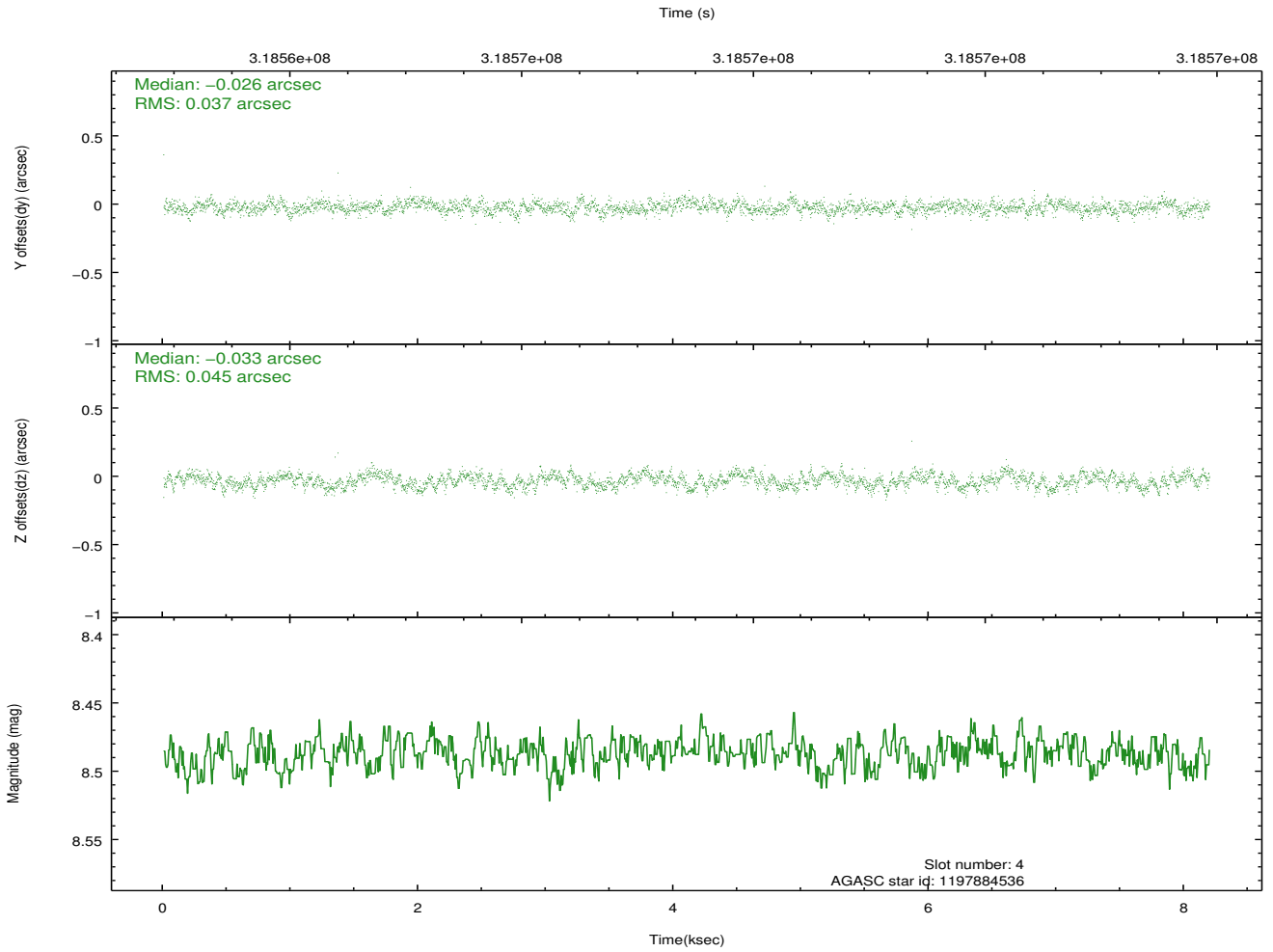
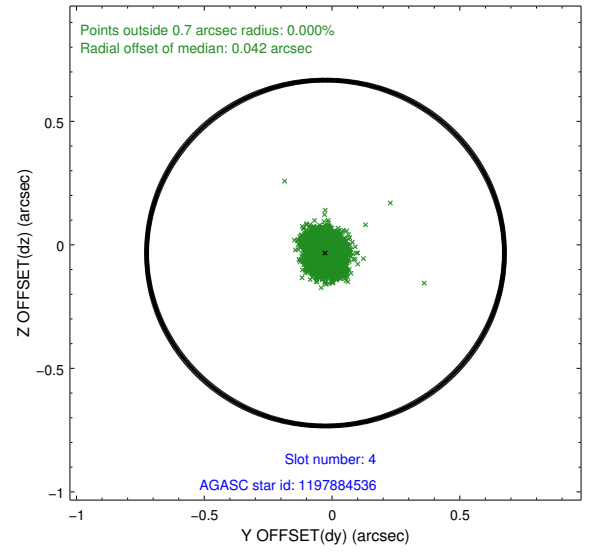
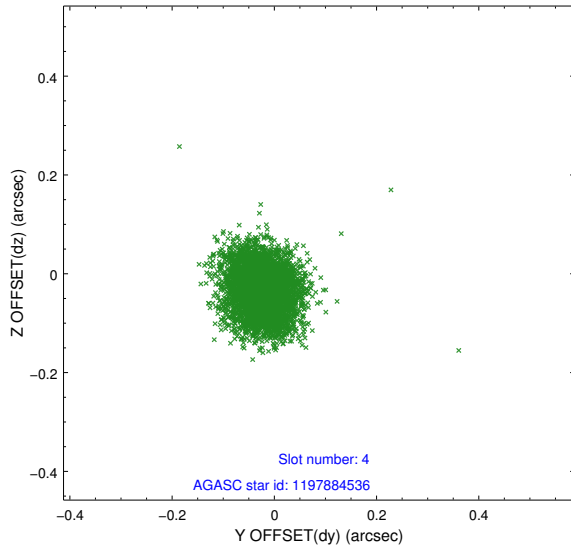
slot	status	id	mag	n_pts	med_dy	med_dz	dr1	dr2	ra	dec	mean_y	mean_z
0	FID	ACIS-I-2	6.92	1999	-0.071	-0.097	0.012	0.019	0.000000	0.000000	-767.52	-845.85
1	FID	ACIS-I-4	6.92	1999	0.141	0.072	0.008	0.015	0.000000	0.000000	2146.43	1060.15
2	FID	ACIS-I-5	6.97	1999	-0.171	0.094	0.012	0.020	0.000000	0.000000	-1820.58	1058.79
3	GUIDE	1197750936	7.56	3998	0.110	0.018	0.066	0.109	15.387940	-71.549550	-1415.99	-1561.78
4	GUIDE	1197884536	8.49	3998	-0.026	-0.033	0.062	0.098	17.160729	-71.835289	-1362.40	690.05
5	GUIDE	1197885328	7.24	3998	0.083	0.134	0.069	0.102	16.283090	-71.733943	-1269.76	-357.37
6	GUIDE	1198189696	7.37	3997	-0.095	-0.077	0.055	0.084	15.223750	-72.697522	2356.80	132.92
7	GUIDE	1198283128	7.85	3996	-0.077	-0.050	0.055	0.091	17.272580	-72.642428	1222.84	2024.51

2.4 Star Slots

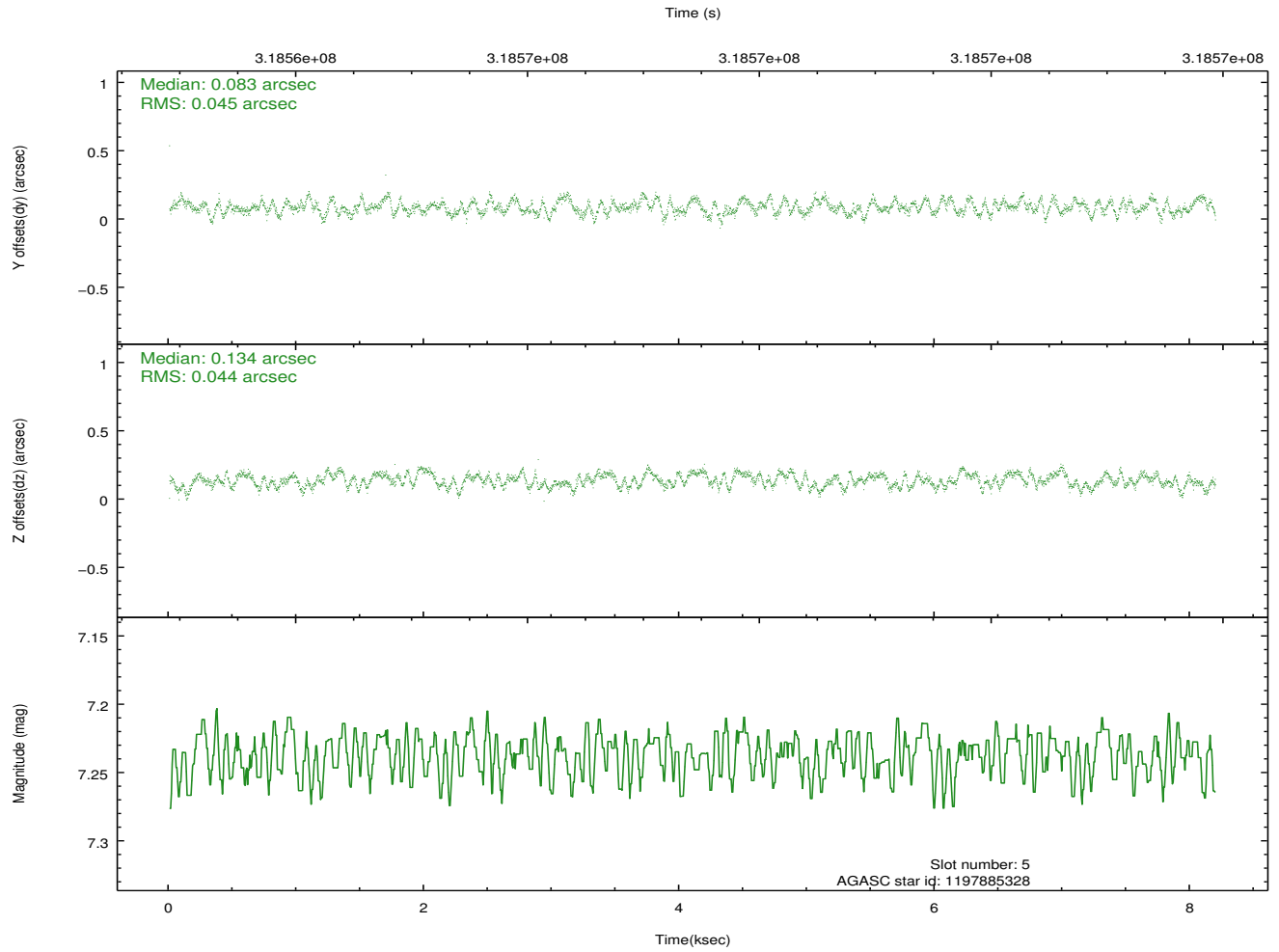
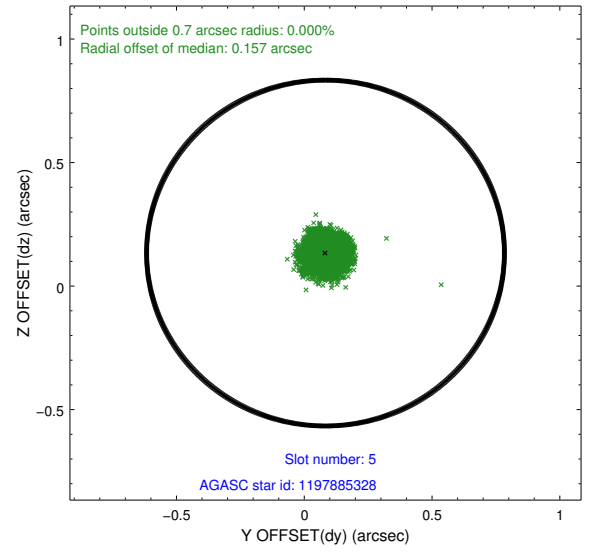
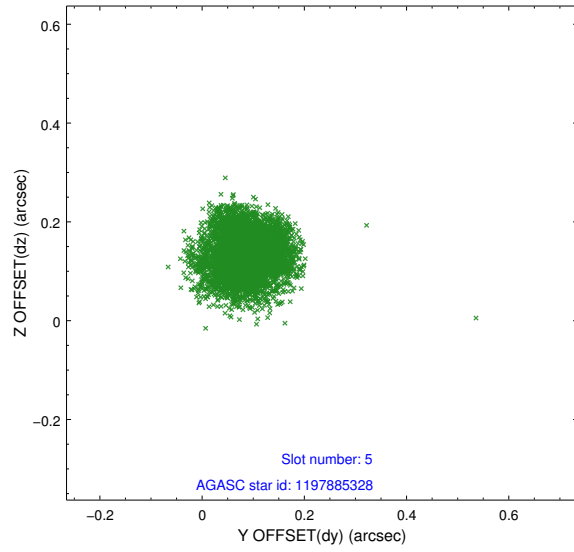
2.4.1 Slot 3



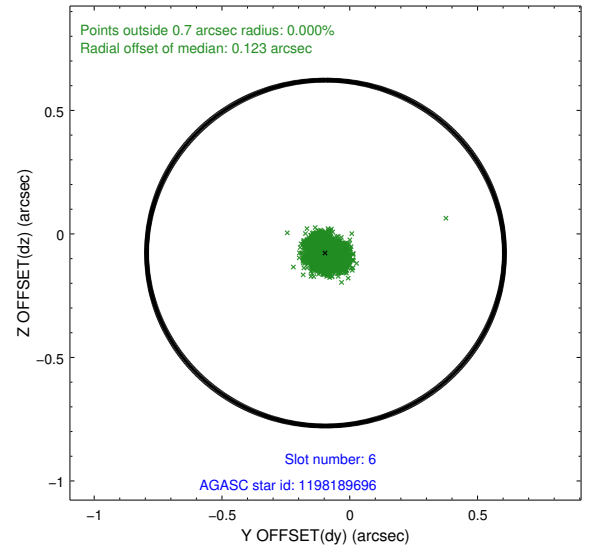
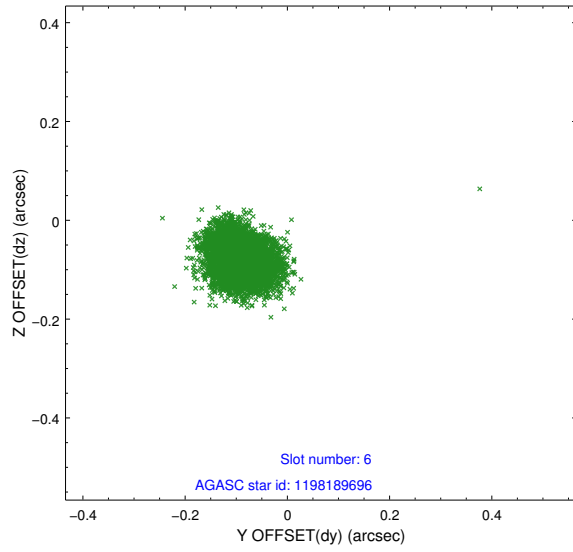
2.4.2 Slot 4



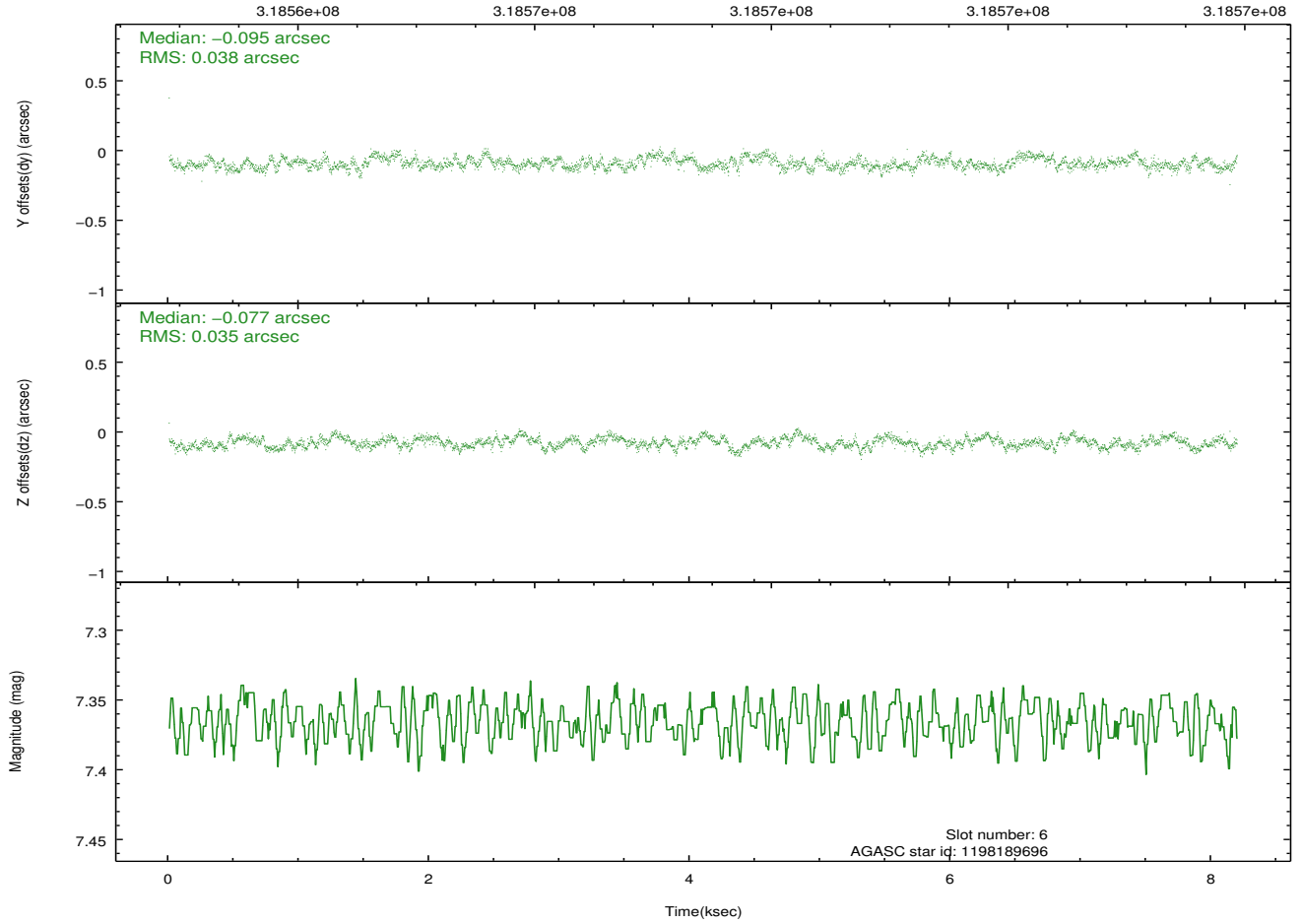
2.4.3 Slot 5



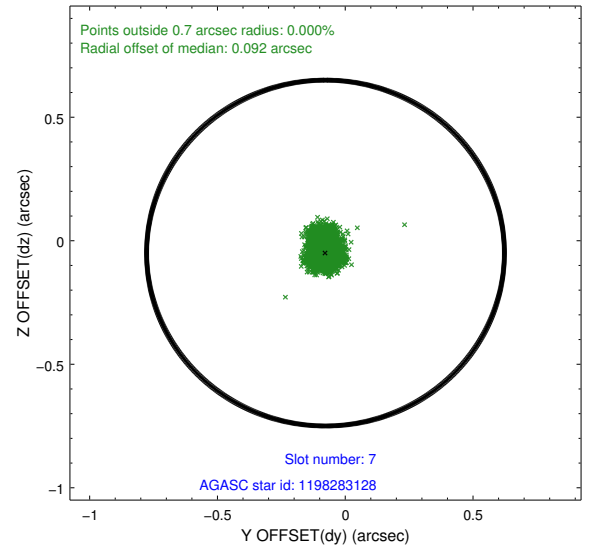
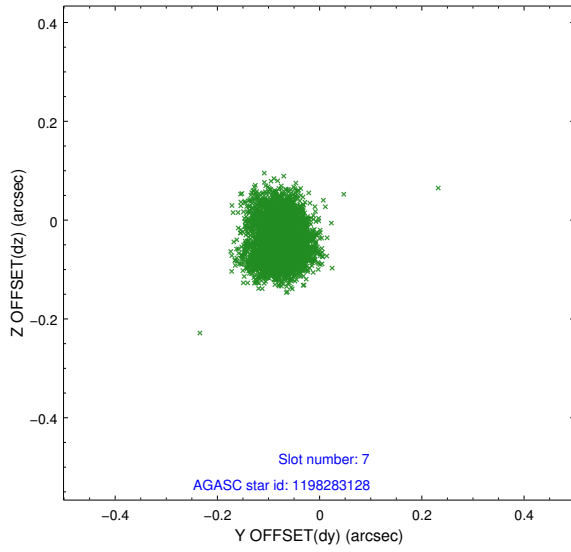
2.4.4 Slot 6



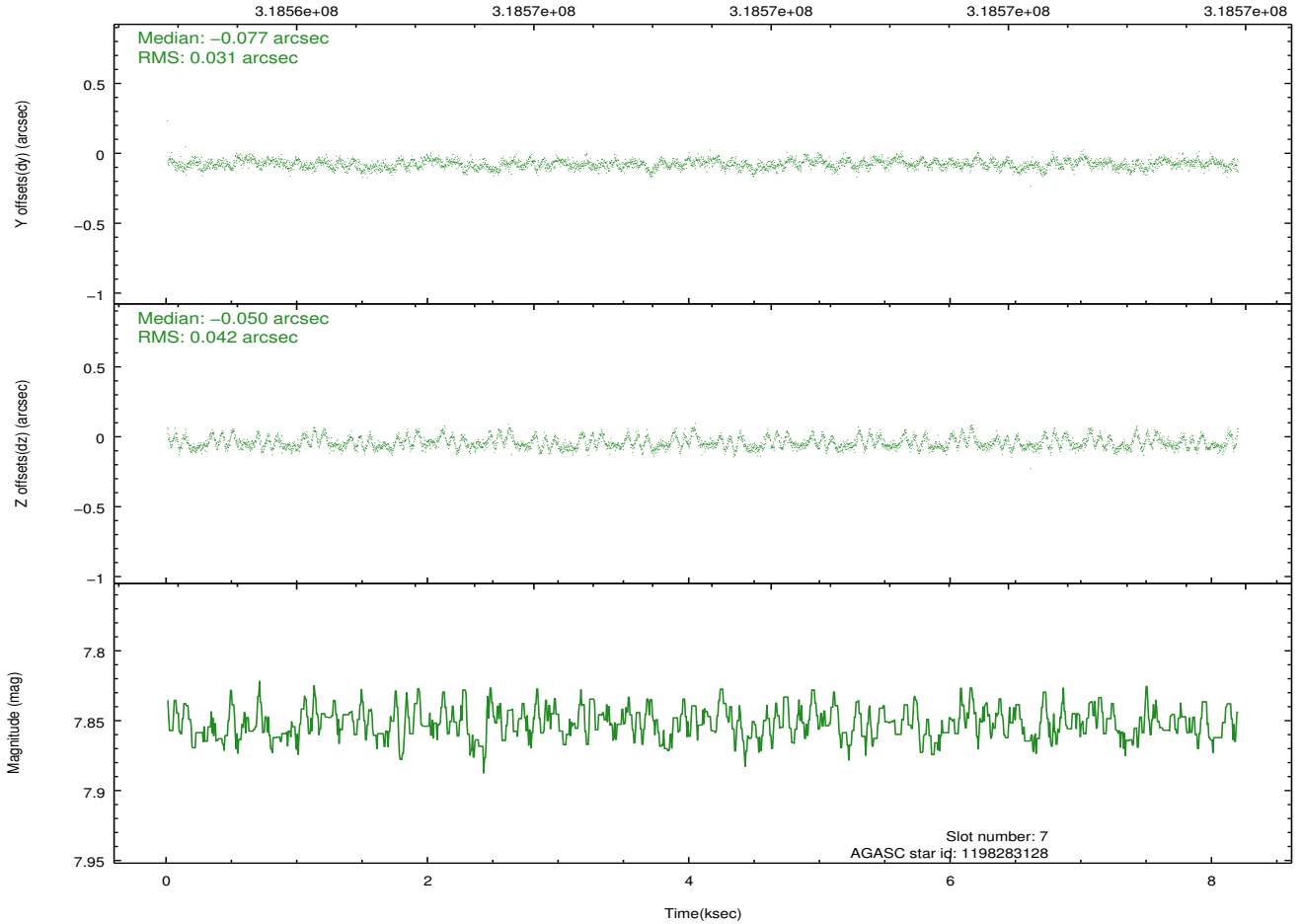
Time (s)



2.4.5 Slot 7

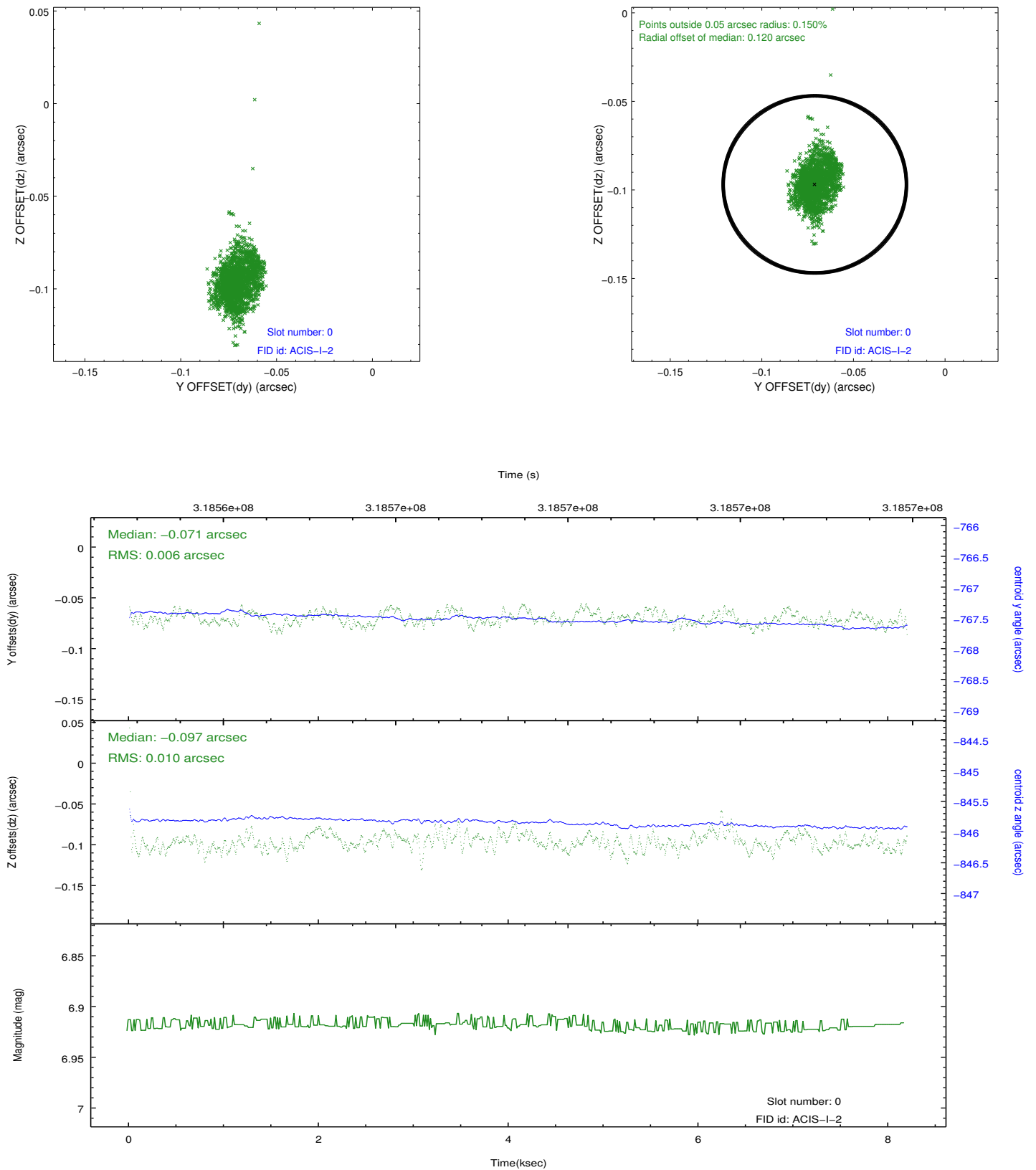


Time (s)

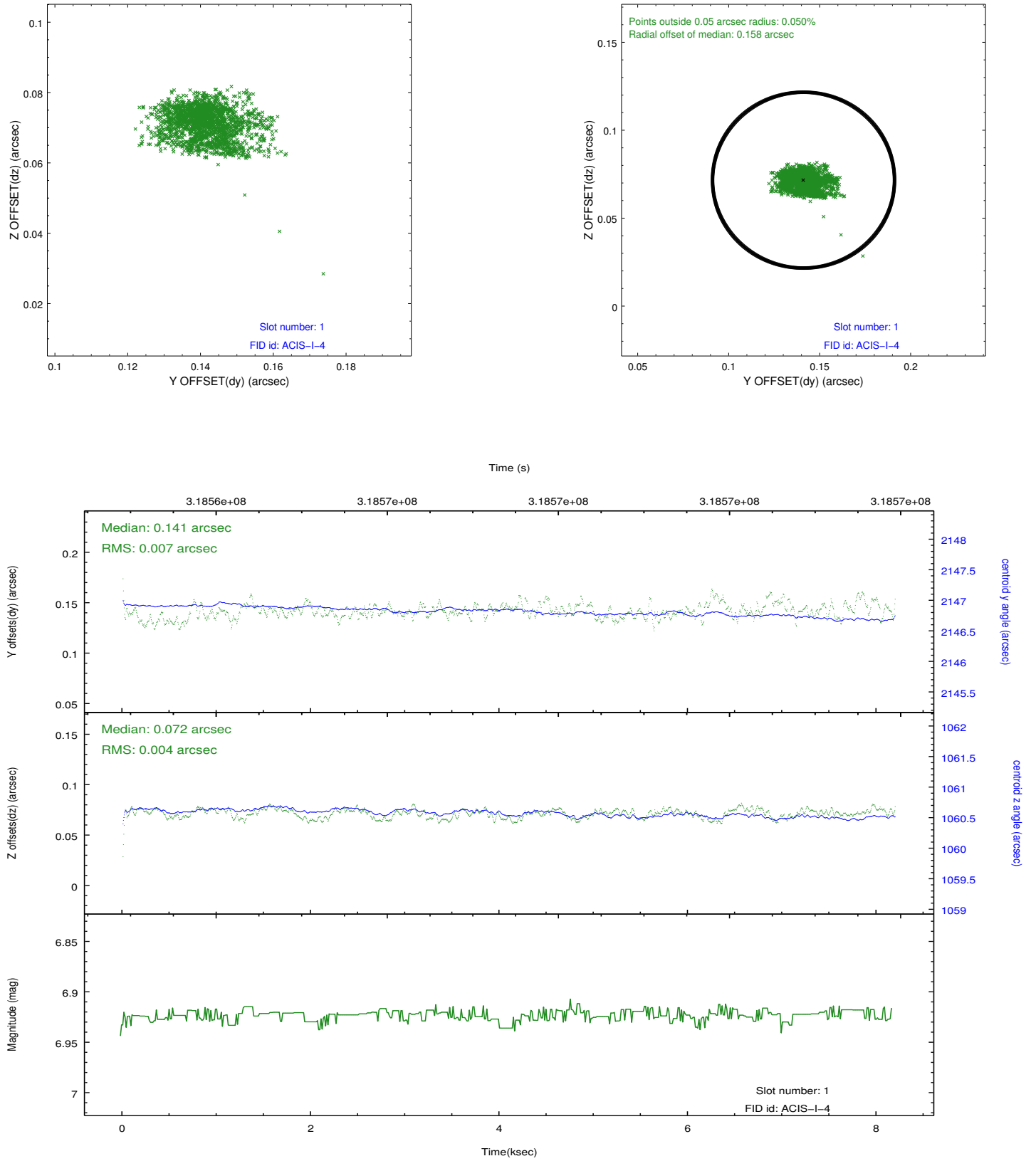


2.5 FID Slots

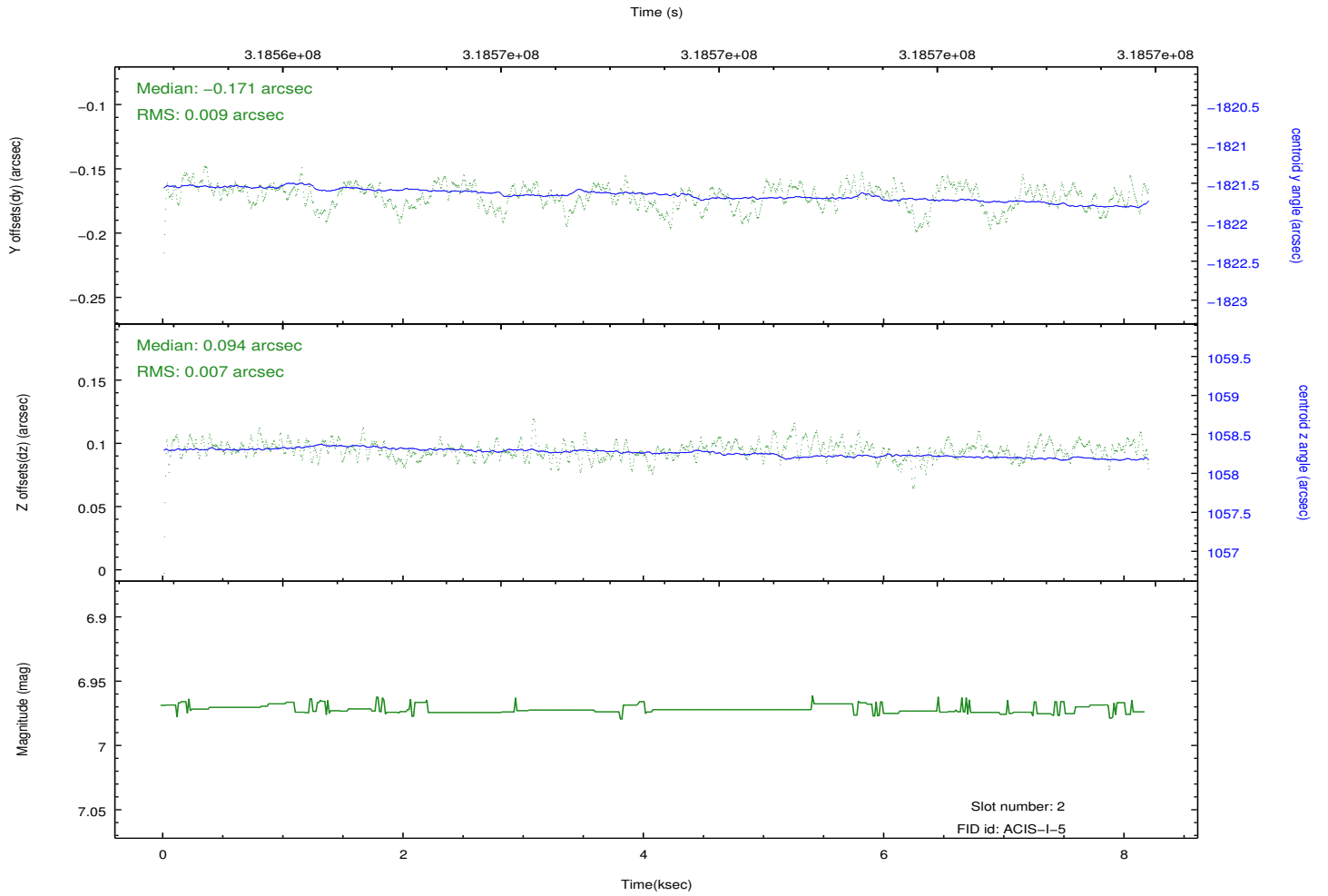
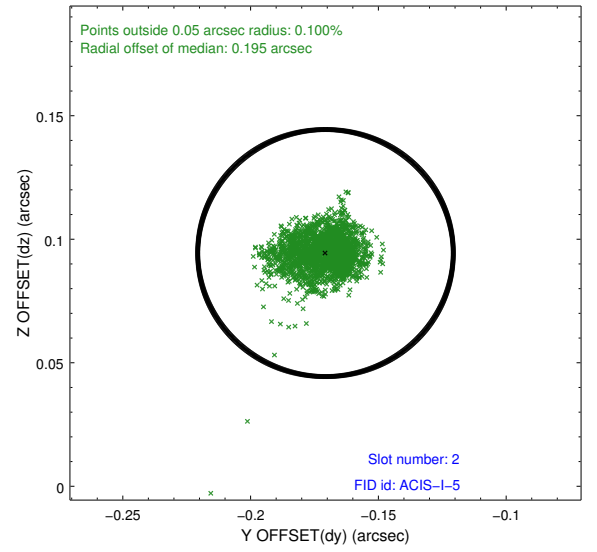
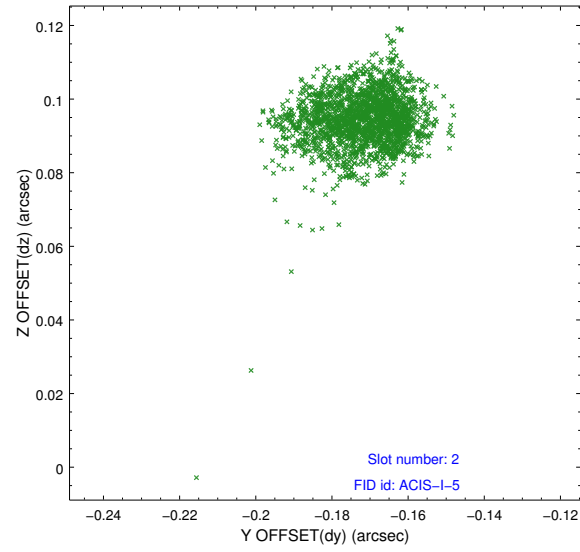
2.5.1 Slot 0



2.5.2 Slot 1



2.5.3 Slot 2



A Summary

A.1 Status

V&V Scientist	Beth Sundheim
V&V Date (YYYY-MM-DD)	2012.05.10
V&V Edition	1
V&V Disposition and Status	OK
V&V Charge Time	7.77480005

A.2 Comments

Window preference met.