

V&V Reference Report

L2 ASCDS Version : 8.4.4

Observation 9628 - L2 Version 3
Chandra X-Ray Center

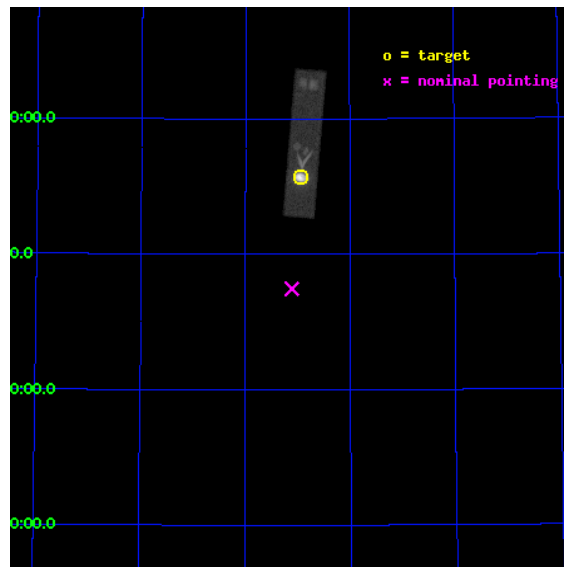
L2 Processing Date : Aug 12 2012

Contents

1	Front	2
2	OBI	3
2.1	OBI	3
2.1.1	Images	3
2.1.2	Parameters	4
2.1.3	Events	4
2.2	Compared Parameters	5
2.3	Aspect	6
2.4	Star Slots	9
2.4.1	Slot 3	9
2.4.2	Slot 4	10
2.4.3	Slot 5	11
2.4.4	Slot 6	12
2.4.5	Slot 7	13
2.5	FID Slots	14
2.5.1	Slot 0	14
2.5.2	Slot 1	15
2.5.3	Slot 2	16
A	Summary	17
A.1	Status	17
A.2	Comments	17

1 Front

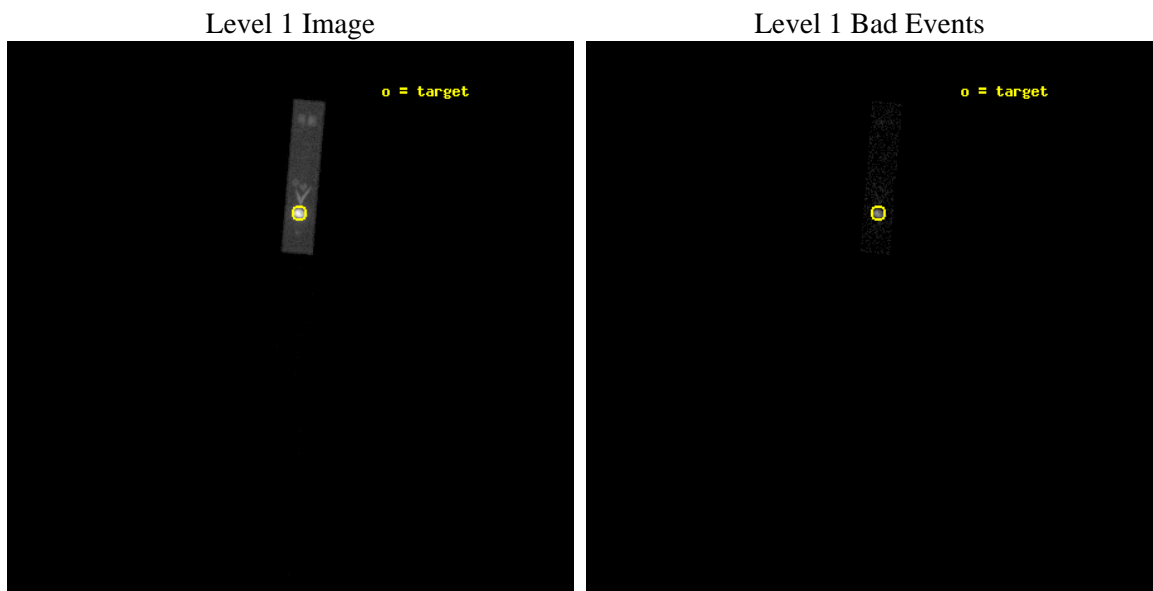
seq_num	290751	Sequence number
obs_id	9628	Observation id
title	AO9 Measurements of the optical/UV Transmission of the HRC Filters.	
observer	Dr. CXC Calibration	Principal investigator
object	Vega	Source name
ra_targ	279.235	Observer's specified target RA [deg]
dec_targ	38.783778	Observer's specified target Dec [deg]
ra_nom	279.27805833289	Nominal RA [deg]
dec_nom	38.373227670565	Nominal Dec [deg]
roll_nom	94.770770101765	Nominal Roll [deg]
revision	3	Processing version of data
ontime	2188.6313565373	[s]
liveltime	857.54927455032	Ontime multiplied by DTCOR
l2events	387664	Number of level 2 events



2 OBI

2.1 OBI

2.1.1 Images



2.1.2 Parameters

obi_num	0	Obi number	sched_exp_time	2000.000000	[s] Scheduled observation exposure time
ascdsver	8.4.5	Processing system revision	ontime	2188.6313565373	[s]
caldbver	4.5.1.1	 	l1events	442489	Number of level 1 events
date	2012-08-12T11:27:14	Date and time of file creation			
revision	3	Processing version of data			

2.1.3 Events

Level 1 Events

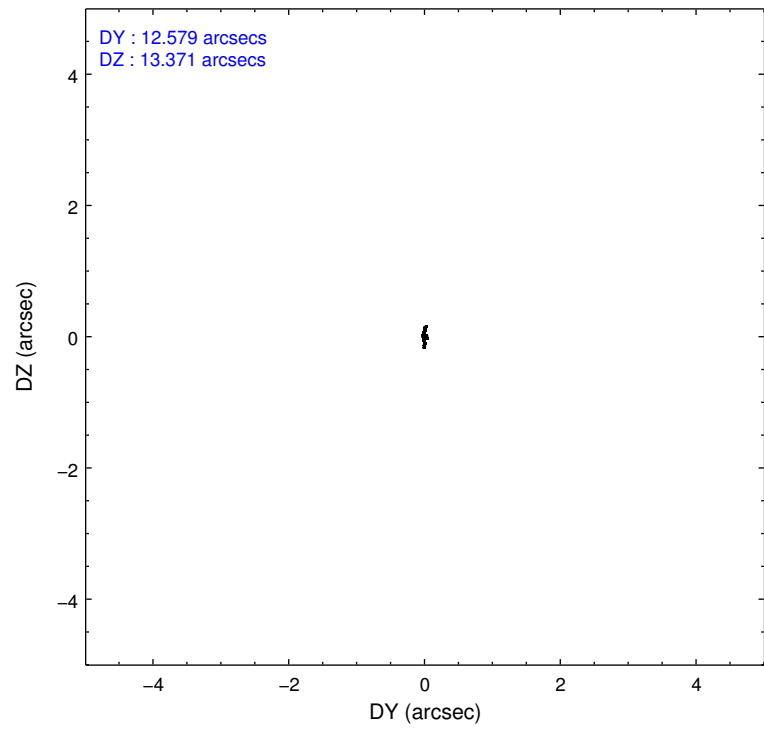
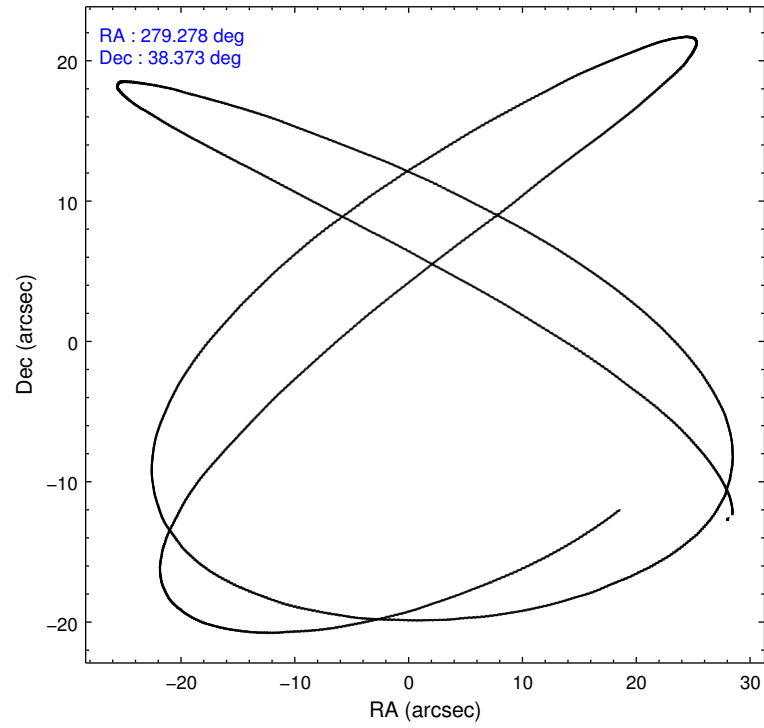
	segment 1	segment 2	segment 3
level 1 events	3	34	442452
rejected events	3	12	38914
rejected %	100%	35%	8%

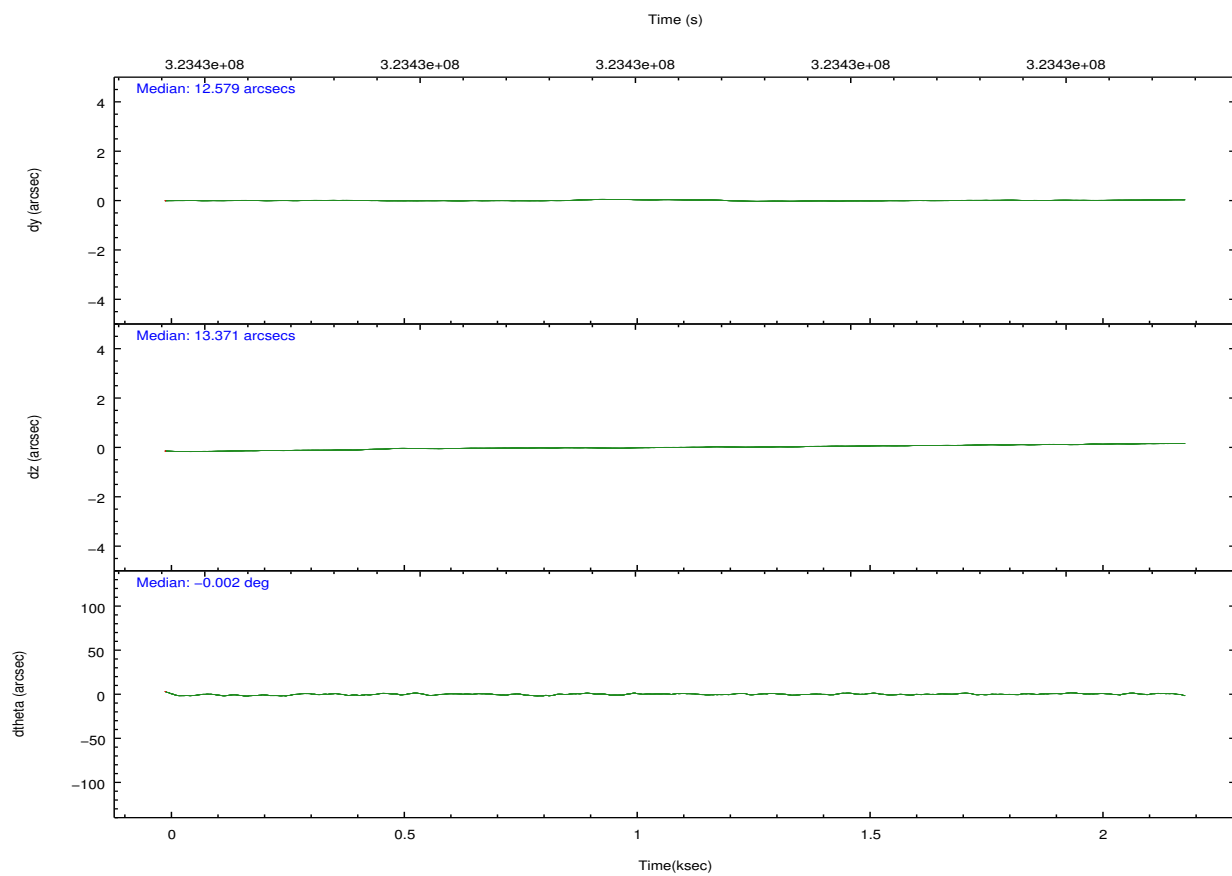
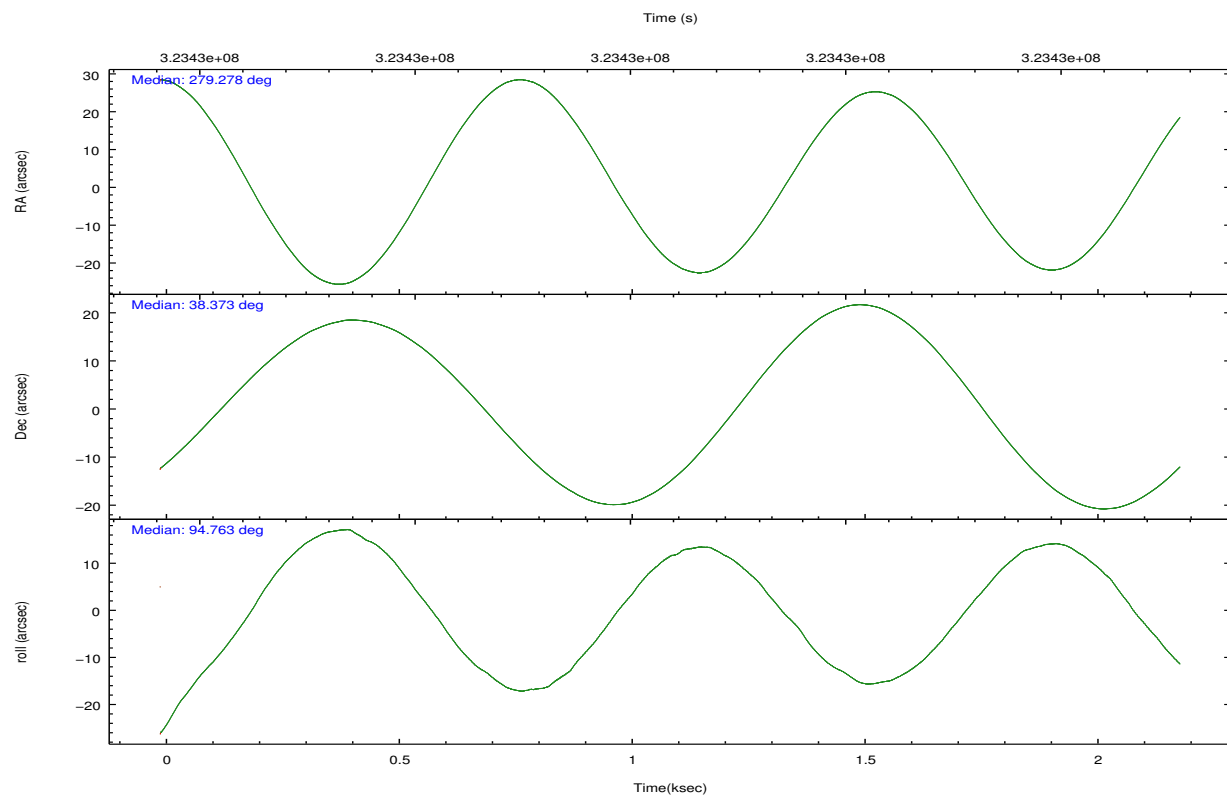
2.2 Compared Parameters

Parameter	Planned	Actual
Instrument	HRC	HRC
Detector	HRC-S	HRC-S
Grating	NONE	NONE
Data mode	OBSERVING	OBSERVING
Observation mode	POINTING	POINTING
[deg] Pointing RA	279.300757	279.2780583328911
[deg] Pointing Dec	38.350535	38.37322767056504
[deg] Pointing Roll	94.689357	94.77077010176464
[s] Window start time (MET)	320716865.184000	320716865.184000
[s] Window stop time (MET)	328579265.184000	328579265.184000
[mm] SIM focus pos	-1.533336	-1.526339935833849
[mm] SIM defocus	7.710433287538843e-07	0.006996703570447904
[mm] SIM translation stage pos	250.455976	250.4635187648994
[mm] SIM translation stage offset	0	-0.007540371344731511
[s] Observation start time (MET)	323429681.184000	323429304.66121
Observation start date	2008-04-01T09:33:36	2008-04-01T09:28:24
[s] Observation end time (MET)	323431681.184000	323432404.26136
Observation end date	2008-04-01T10:06:56	2008-04-01T10:20:04

Parameter	Planned	Actual
Obspar format version number	7	7
Obspar file type	PREDICTED	ACTUAL
Obspar update status	NONE	UPDATED

2.3 Aspect



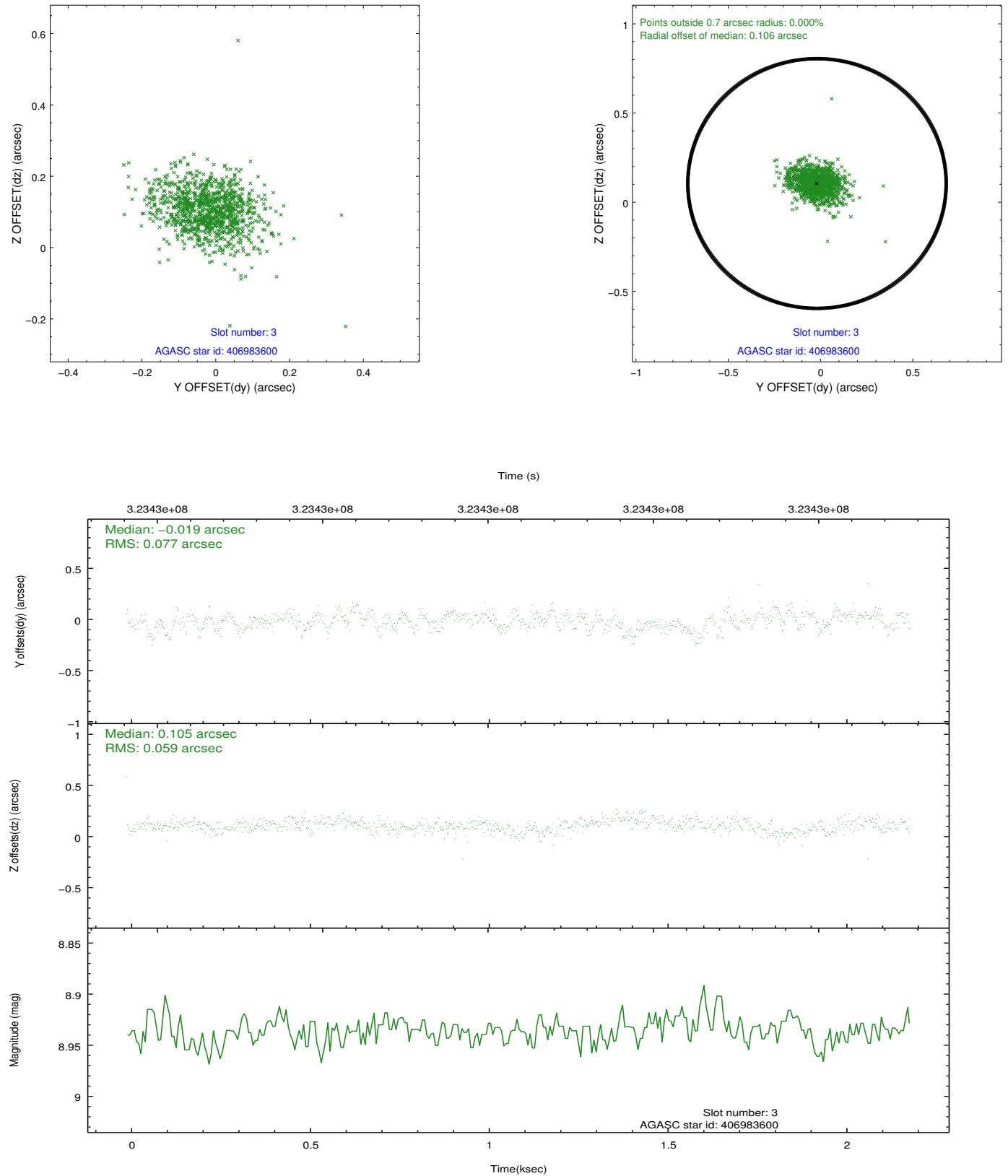


Slot Statistics

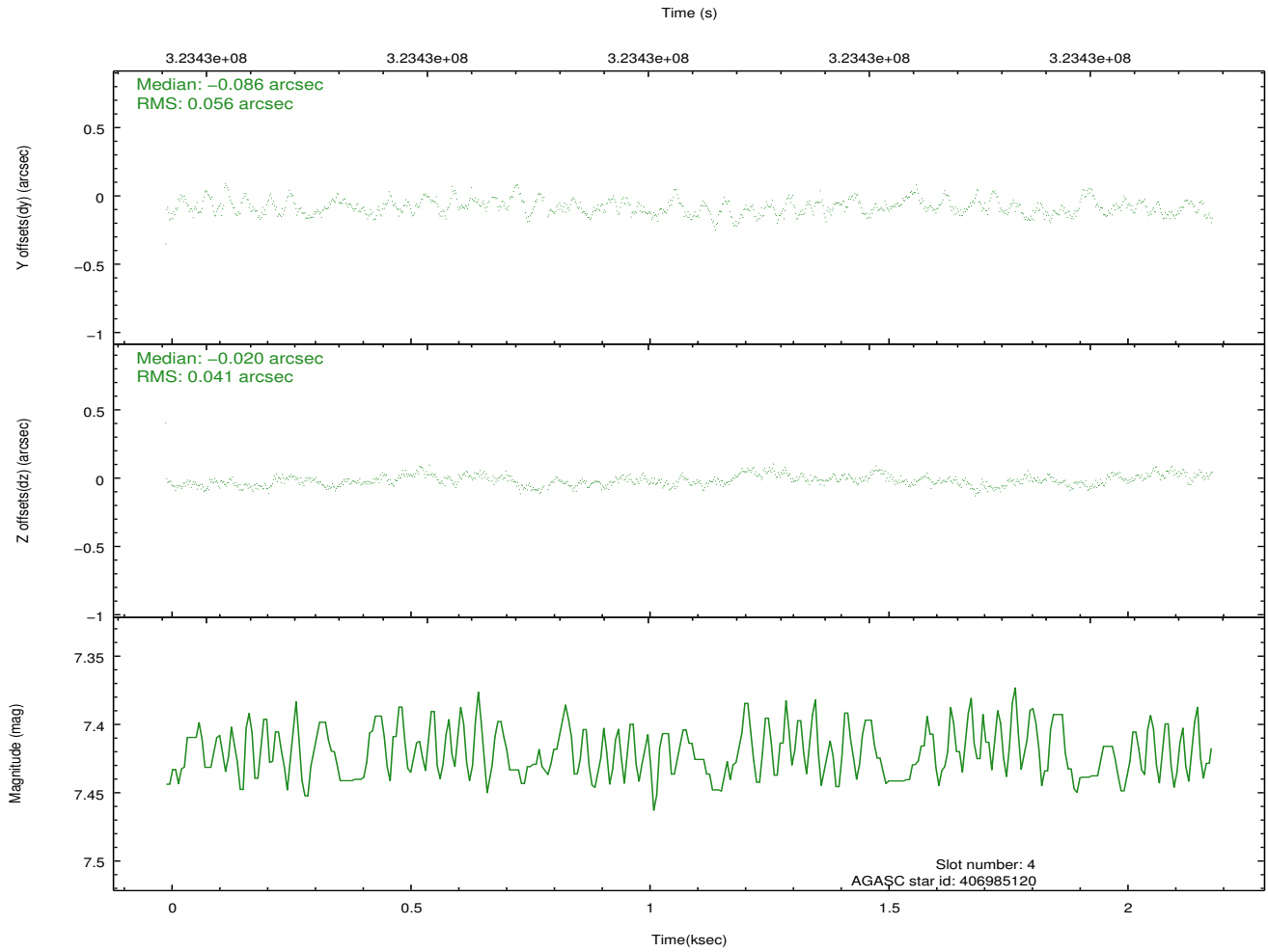
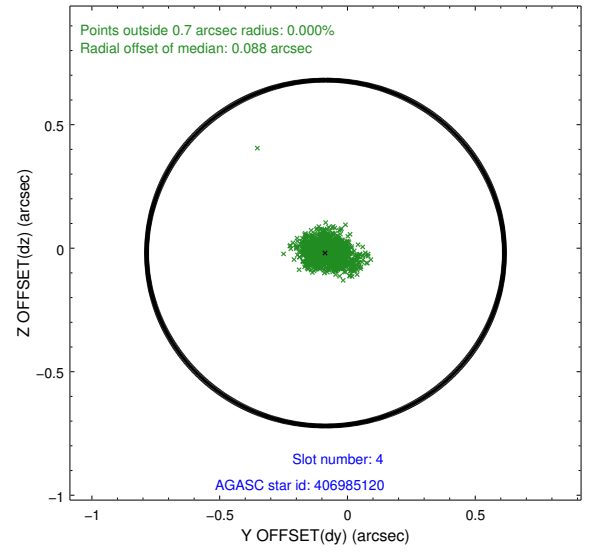
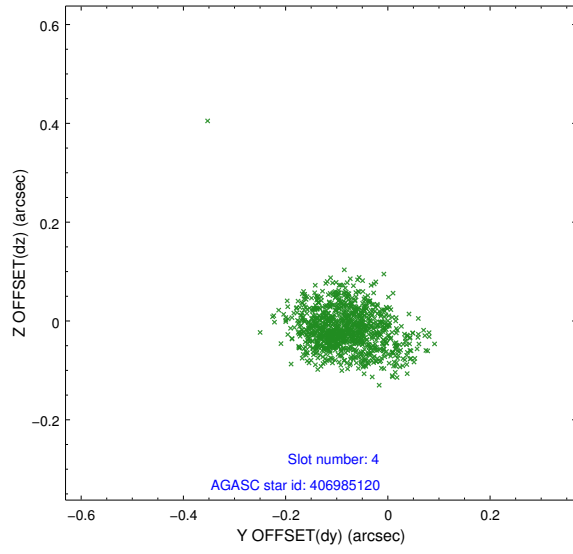
slot	status	id	mag	n_pts	med_dy	med_dz	dr1	dr2	ra	dec	mean_y	mean_z
0	FID	HRC-S-2	6.98	535	0.145	-0.073	0.007	0.016	0.000000	0.000000	1232.80	-454.70
1	FID	HRC-S-3	6.99	535	0.021	-0.094	0.005	0.009	0.000000	0.000000	-1167.37	566.65
2	FID	HRC-S-4	6.93	535	0.240	-0.128	0.009	0.016	0.000000	0.000000	1229.31	571.02
3	GUIDE	406983600	8.94	1067	-0.019	0.105	0.096	0.166	279.940957	39.020708	2264.13	-1983.62
4	GUIDE	406985120	7.42	1064	-0.086	-0.020	0.072	0.123	278.839732	38.894839	2063.88	1124.43
5	GUIDE	406987272	6.92	1069	-0.095	-0.301	0.078	0.119	278.536588	38.437504	499.34	2121.41
6	GUIDE	406992968	7.64	1069	0.075	0.264	0.063	0.101	279.925490	37.993090	-1420.05	-1660.46
7	GUIDE	406993992	7.62	1068	0.122	-0.046	0.062	0.104	279.053714	38.034587	-1076.70	788.09

2.4 Star Slots

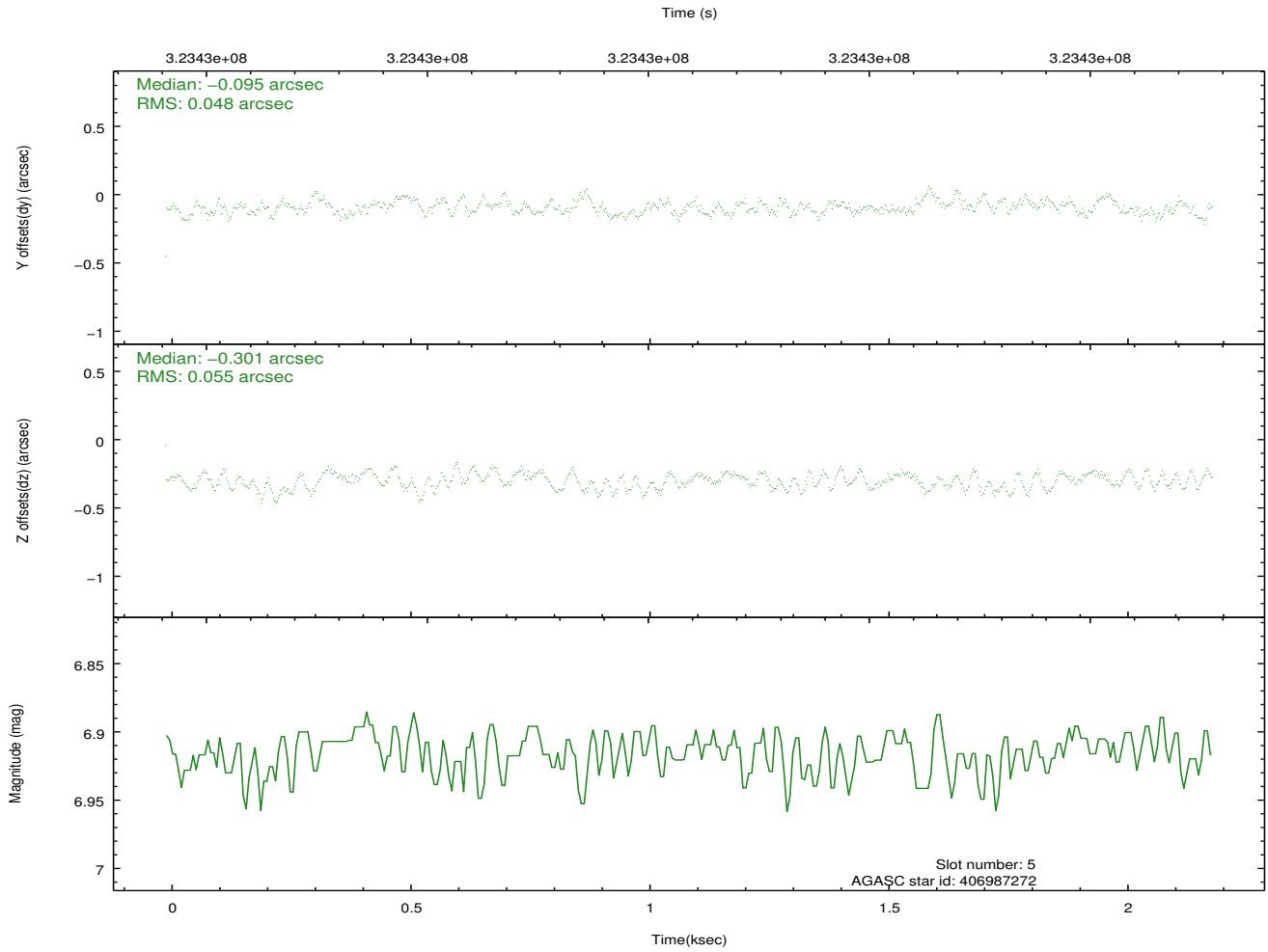
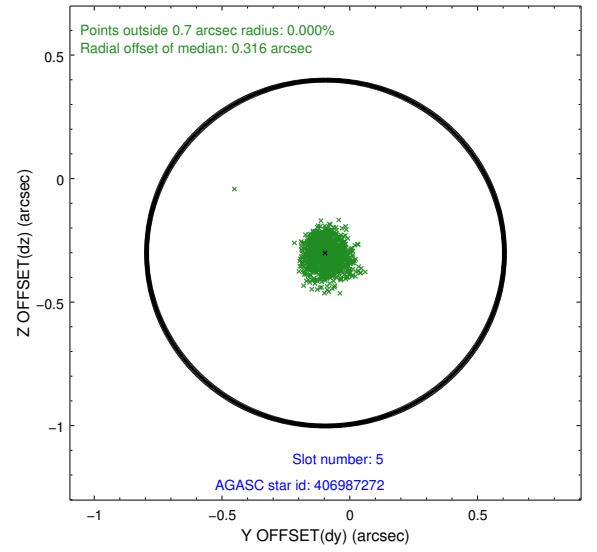
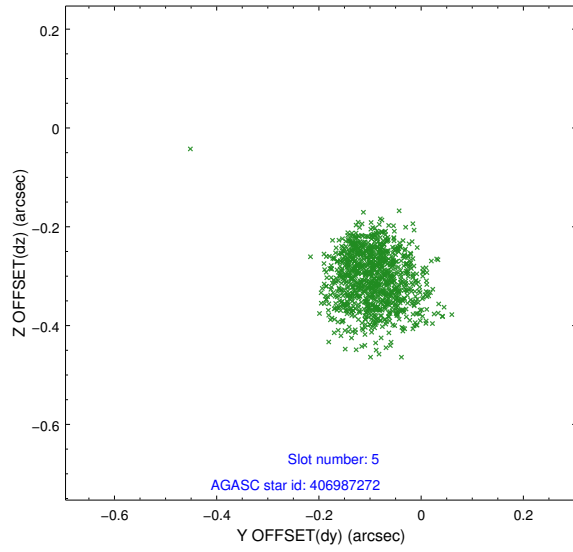
2.4.1 Slot 3



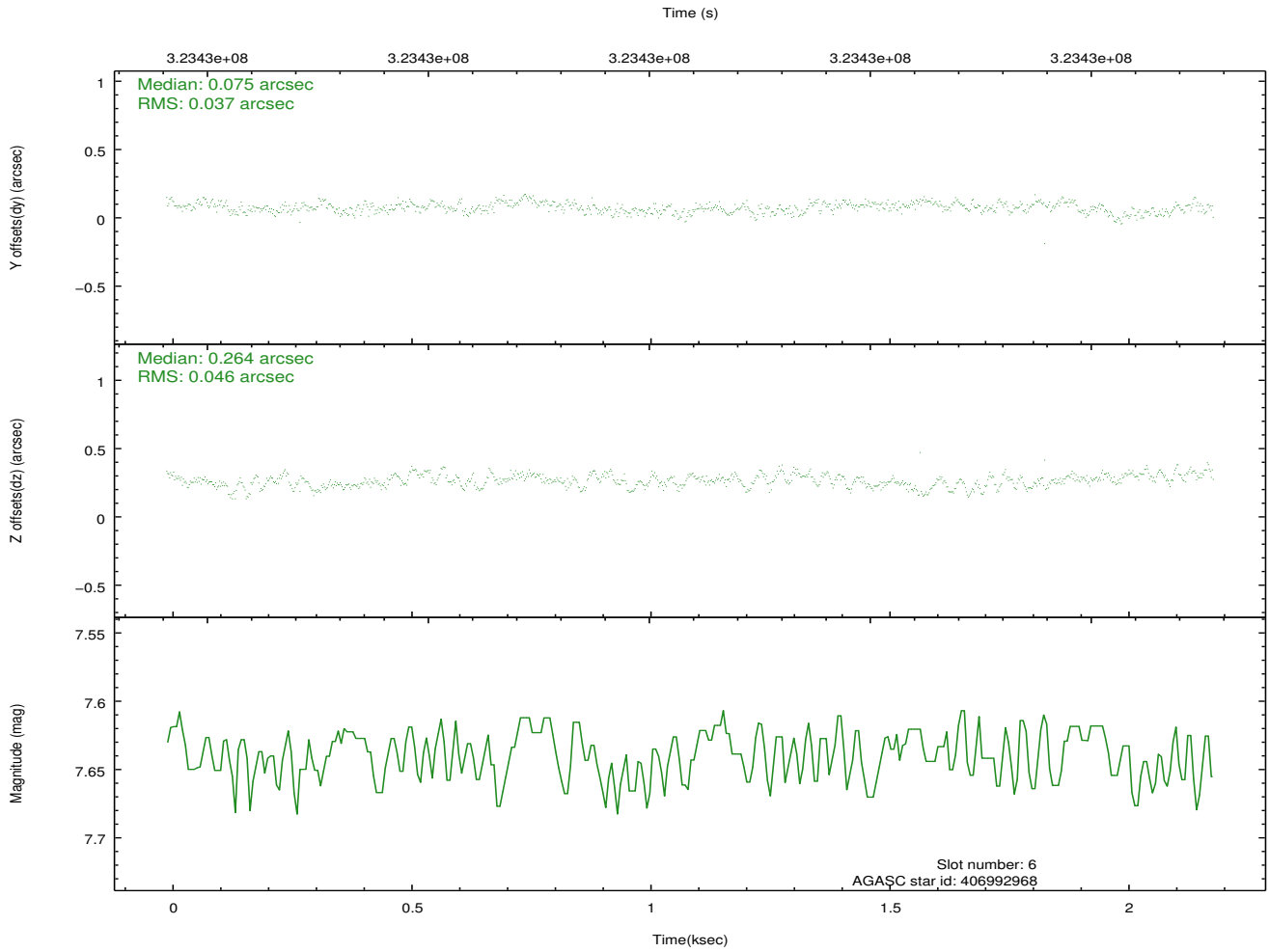
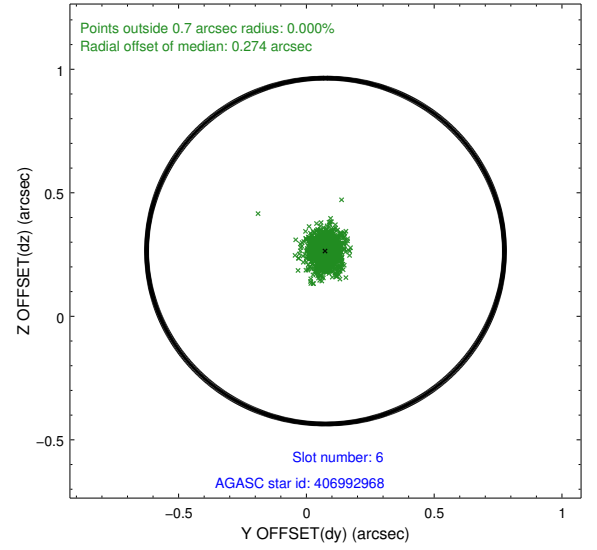
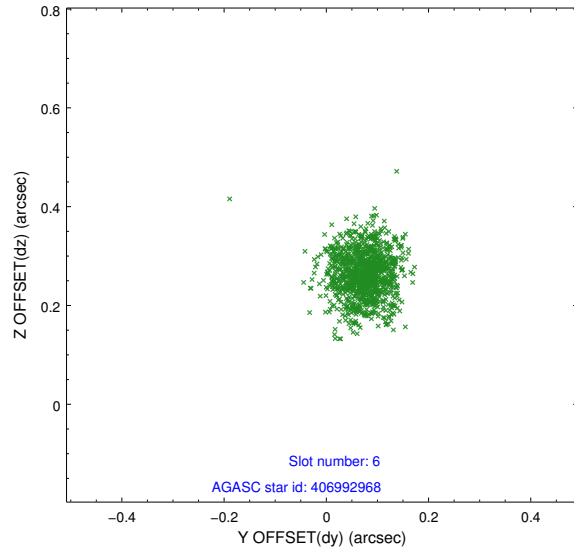
2.4.2 Slot 4



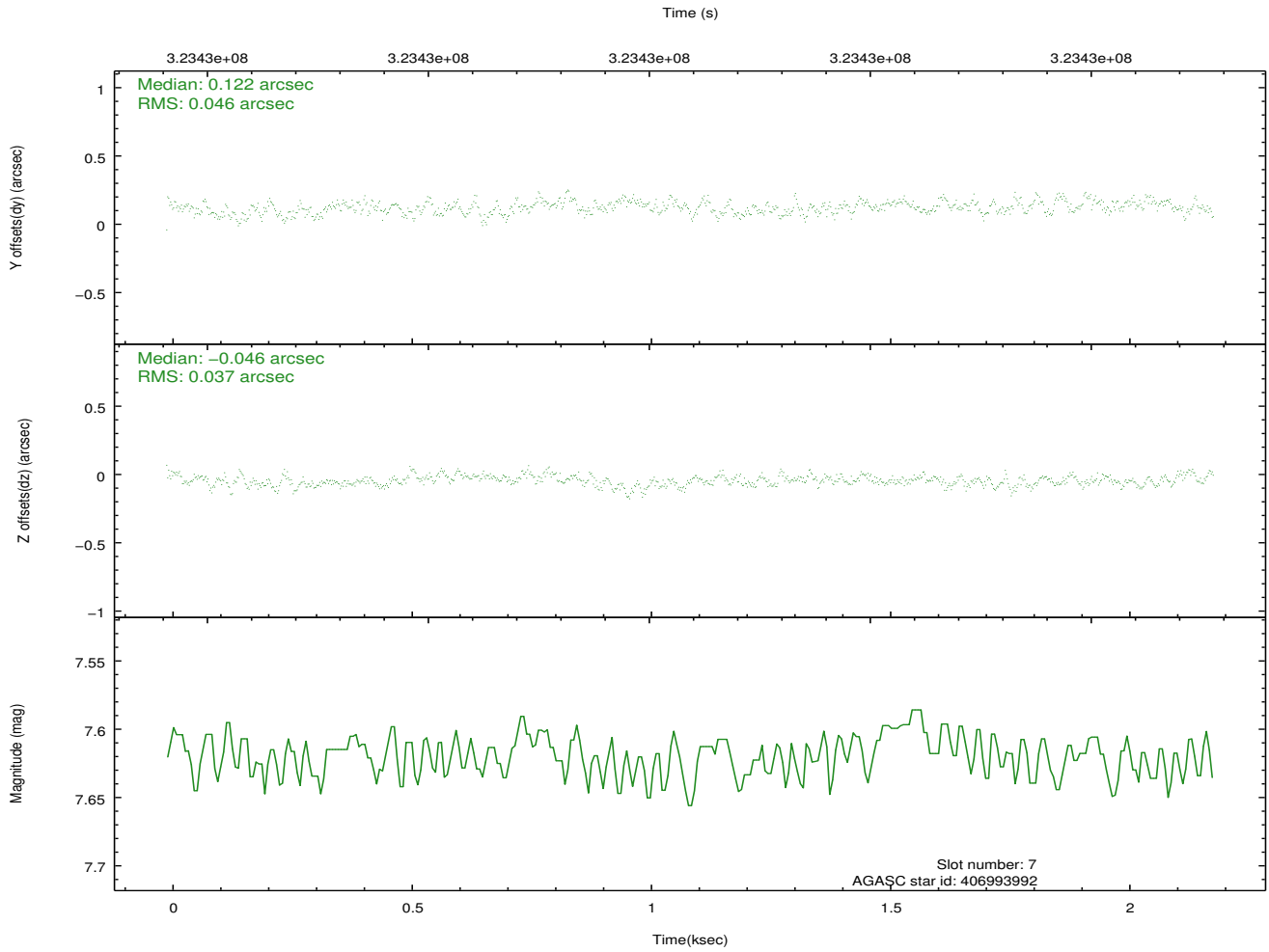
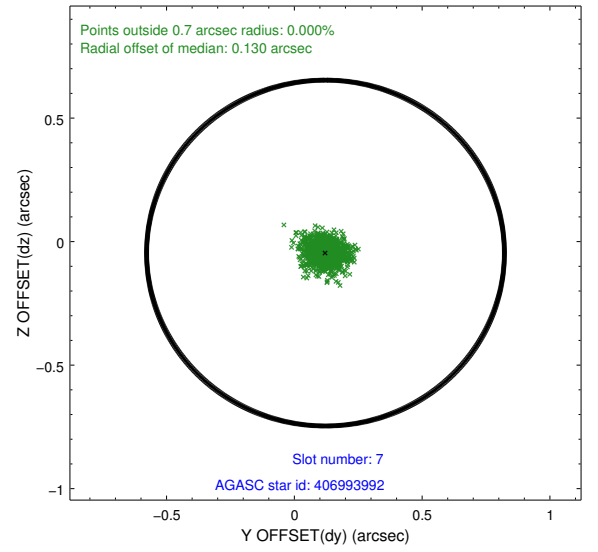
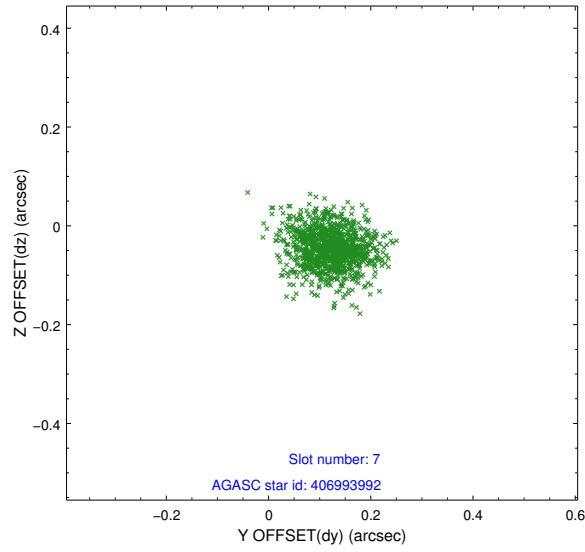
2.4.3 Slot 5



2.4.4 Slot 6

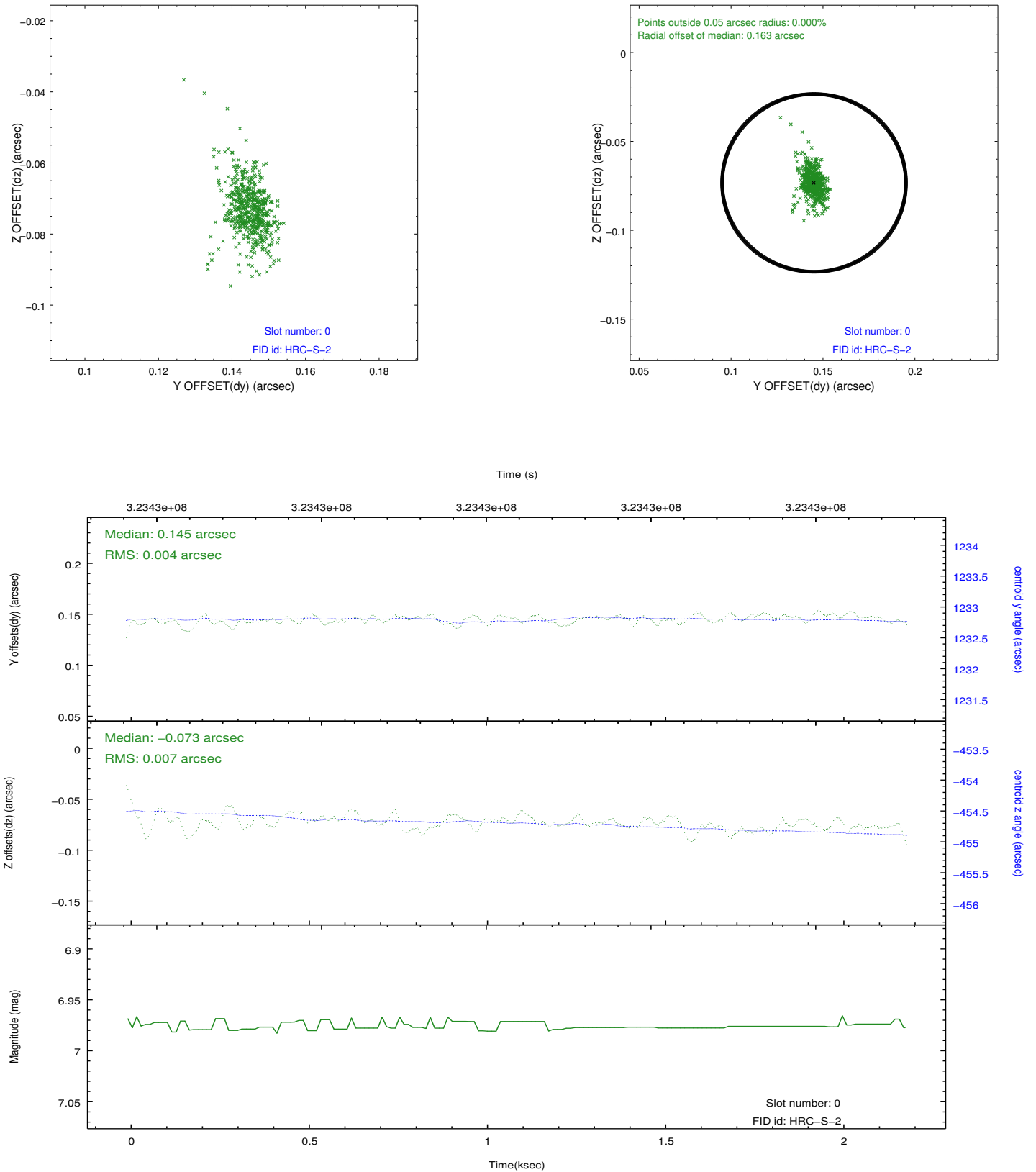


2.4.5 Slot 7

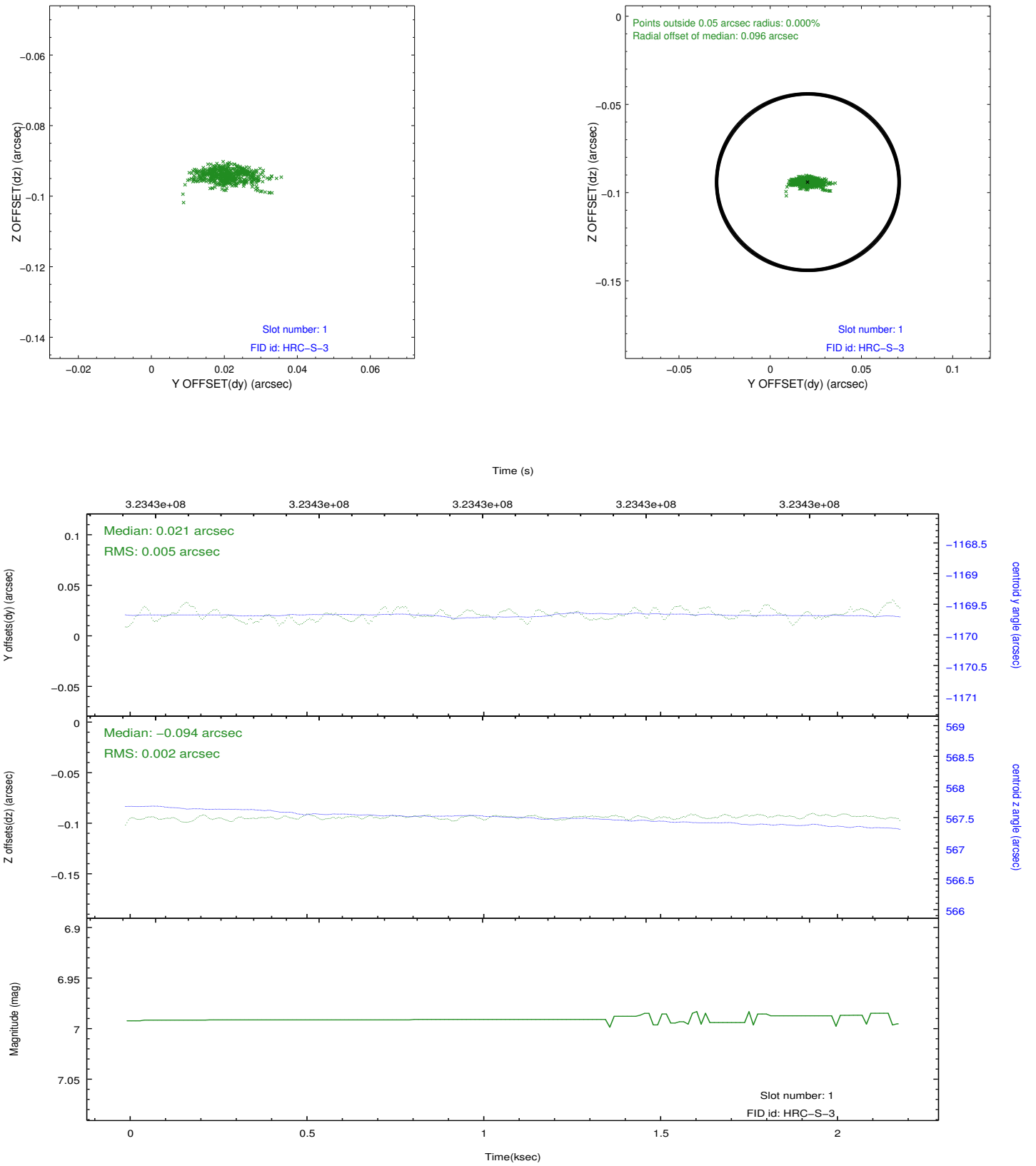


2.5 FID Slots

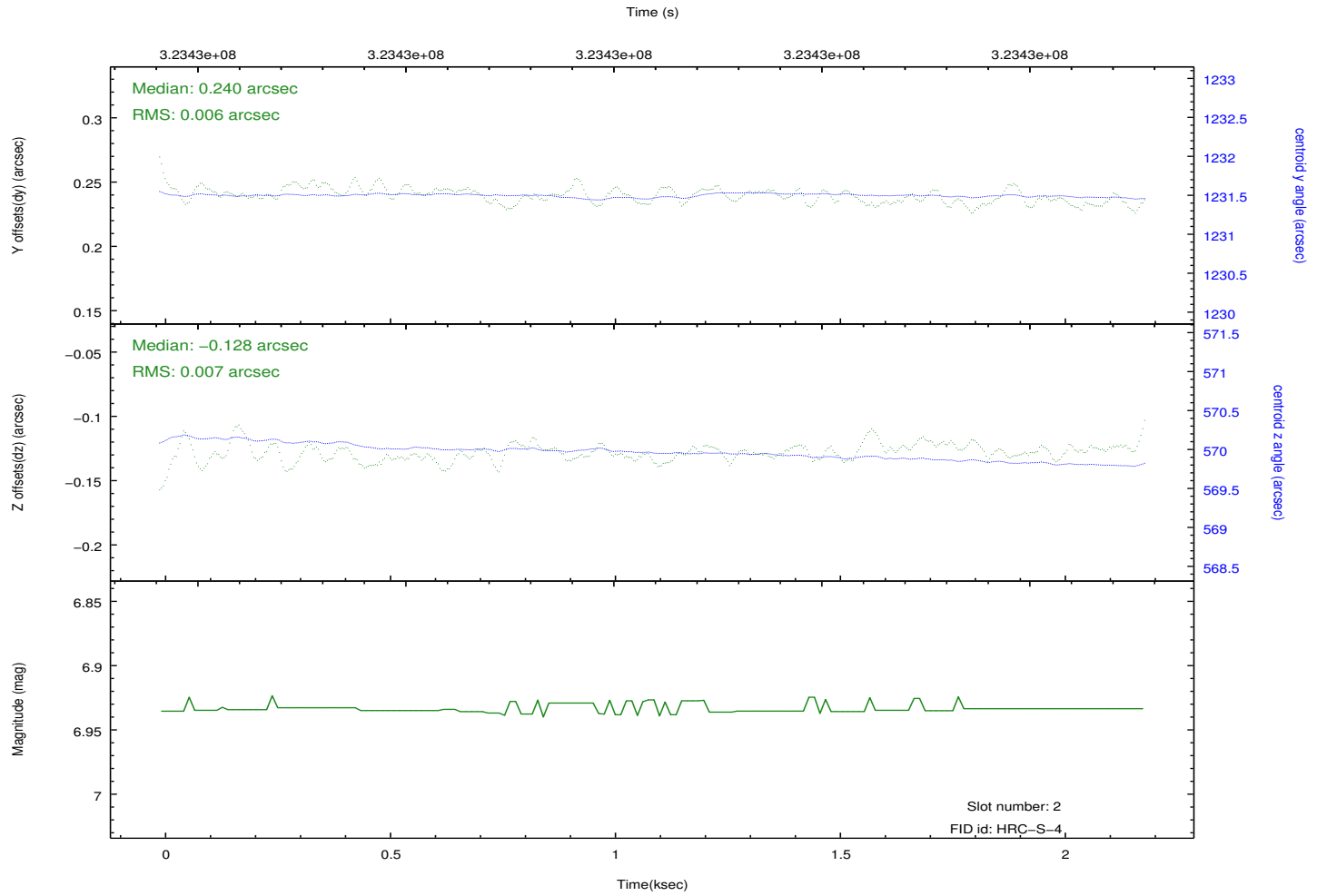
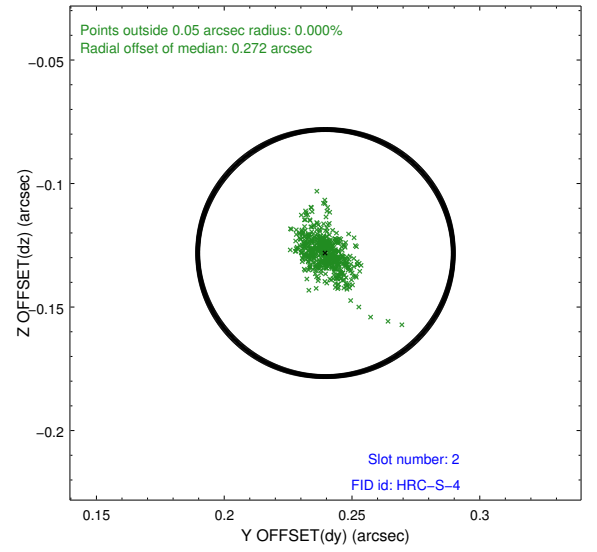
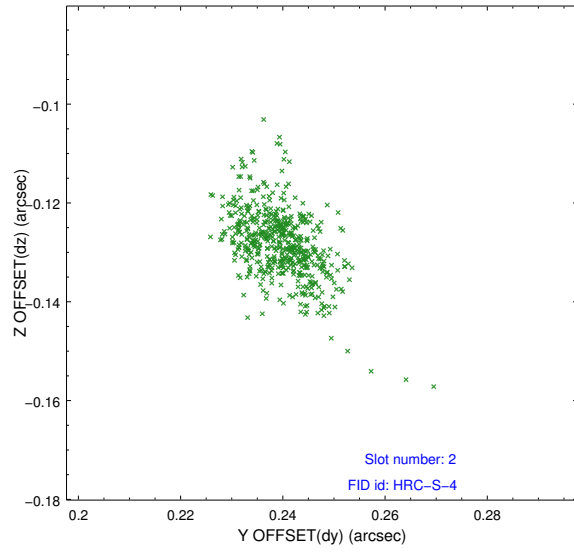
2.5.1 Slot 0



2.5.2 Slot 1



2.5.3 Slot 2



A Summary

A.1 Status

V&V Scientist	Jen Lauer
V&V Date (YYYY-MM-DD)	2012.08.16
V&V Edition	1
V&V Disposition and Status	OK
V&V Charge Time	2.18863135

A.2 Comments

Window constraint met.