

V&V Reference Report

L2 ASCDS Version : 8.4.3

Observation 6750 - L2 Version 2
Chandra X-Ray Center

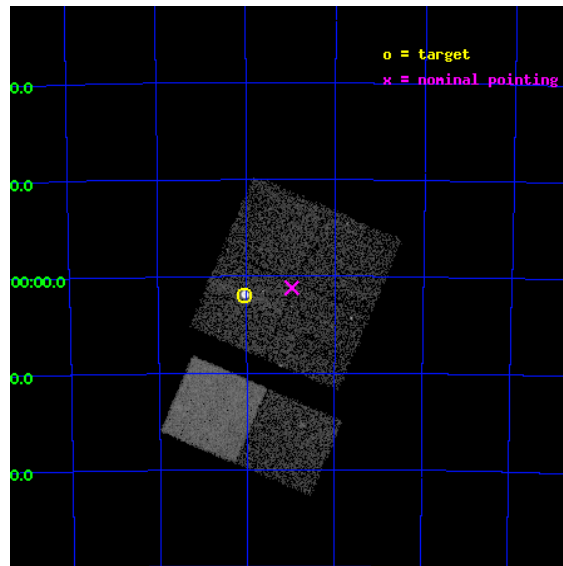
L2 Processing Date : Mar 28 2012

Contents

1	Front	2
2	OBI	3
2.1	OBI	3
2.1.1	Images	3
2.1.2	Bias	3
2.1.3	Parameters	4
2.1.4	Events	4
2.2	Compared Parameters	5
2.3	Aspect	6
2.4	Star Slots	9
2.4.1	Slot 3	9
2.4.2	Slot 4	10
2.4.3	Slot 5	11
2.4.4	Slot 6	12
2.4.5	Slot 7	13
2.5	FID Slots	14
2.5.1	Slot 0	14
2.5.2	Slot 1	15
2.5.3	Slot 2	16
A	Summary	17
A.1	Status	17
A.2	Comments	17

1 Front

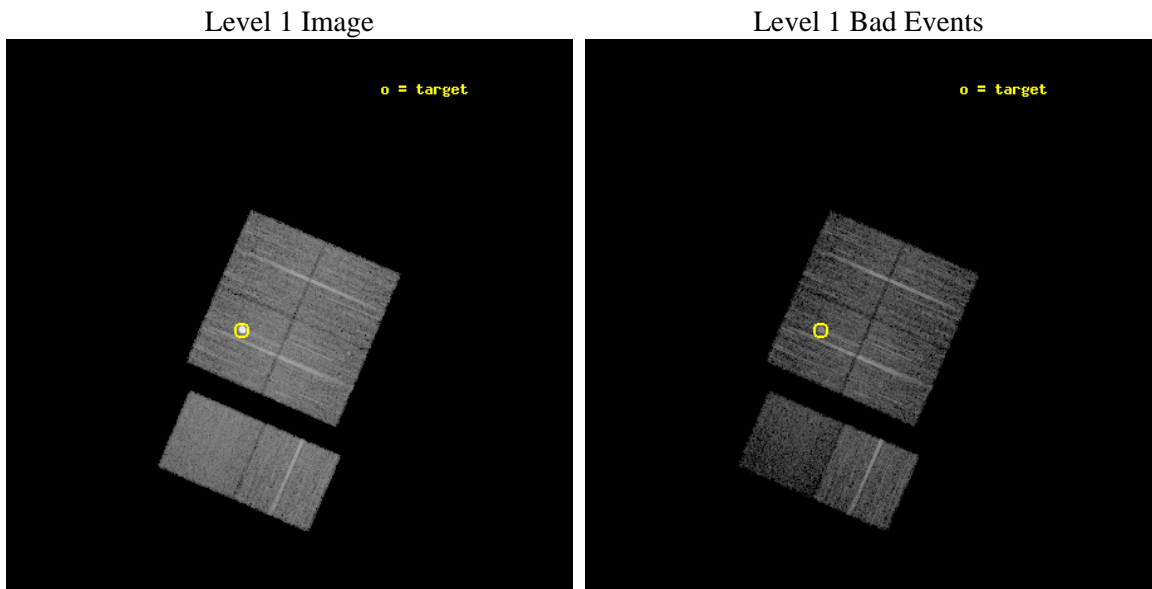
seq_num	590433	Sequence number
obs_id	6750	Observation id
title	AO7 ACIS-I Calibration Observations of E0102-72	Proposal title
observer	Dr. CXC Calibration	Principal investigator
object	E0102-72[I3,-120,-4.0,2.5,0]	Source name
dtcycle	0	
cycle	P	events from which exps? Prim/Second/Both
ra_targ	16.01	Observer's specified target RA [deg]
dec_targ	-72.032028	Observer's specified target Dec [deg]
ra_nom	15.743369571649	Nominal RA [deg]
dec_nom	-72.0199566647	Nominal Dec [deg]
roll_nom	203.22613051721	Nominal Roll [deg]
revision	2	Processing version of data
ontime	7603.1590013802	Sum of GTIs [s]
livetime	7506.883224032	Livetime [s]
ontime0	7606.399971664	Sum of GTIs [s]
ontime1	7606.399971664	Sum of GTIs [s]
ontime2	7606.399971664	Sum of GTIs [s]
ontime3	7603.1590013802	Sum of GTIs [s]
ontime6	7606.399971664	Sum of GTIs [s]
ontime7	7606.399971664	Sum of GTIs [s]
l2events	66370	Number of level 2 events



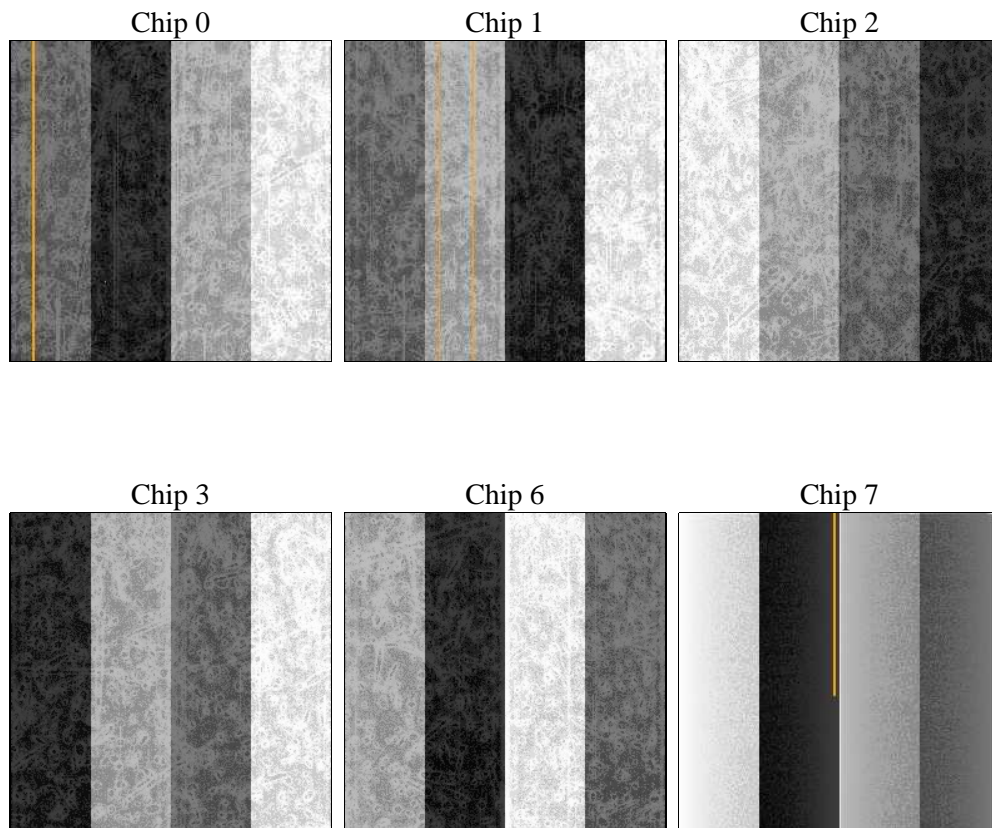
2 OBI

2.1 OBI

2.1.1 Images



2.1.2 Bias



2.1.3 Parameters

obi_num	0	Obi number	sched_exp_time	7500.000000	[s] Scheduled observation exposure time
ascdsver	8.4.3	Processing system revision	ontime	7603.1590013802	Sum of GTIs [s]
caldsver	4.4.8	 	ontime0	7606.399971664	Sum of GTIs [s]
date	2012-03-28T03:05:43	Date and time of file creation	ontime1	7606.399971664	Sum of GTIs [s]
revision	2	Processing version of data	ontime2	7606.399971664	Sum of GTIs [s]
			ontime3	7603.1590013802	Sum of GTIs [s]
			ontime6	7606.399971664	Sum of GTIs [s]
			ontime7	7606.399971664	Sum of GTIs [s]
			l1events	370414	Number of level 1 events

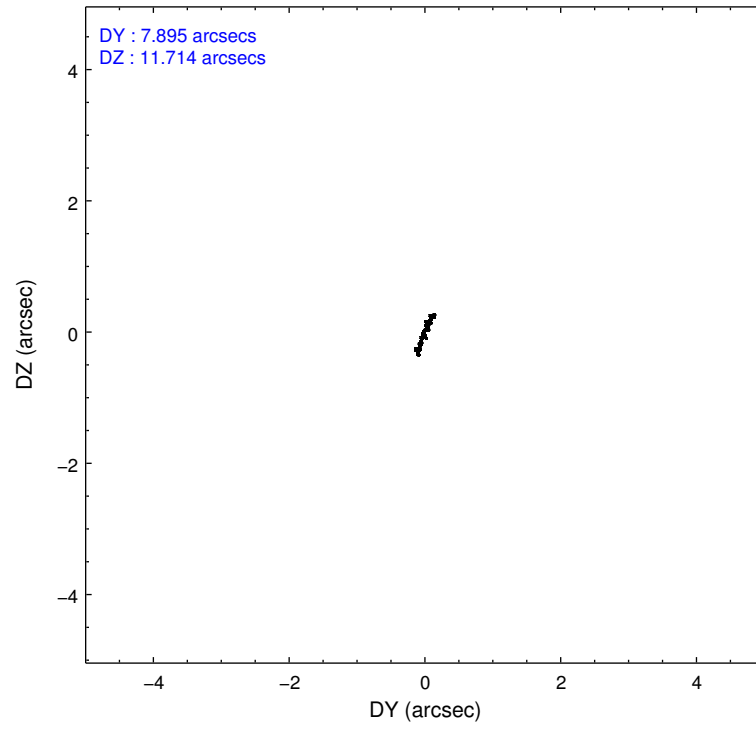
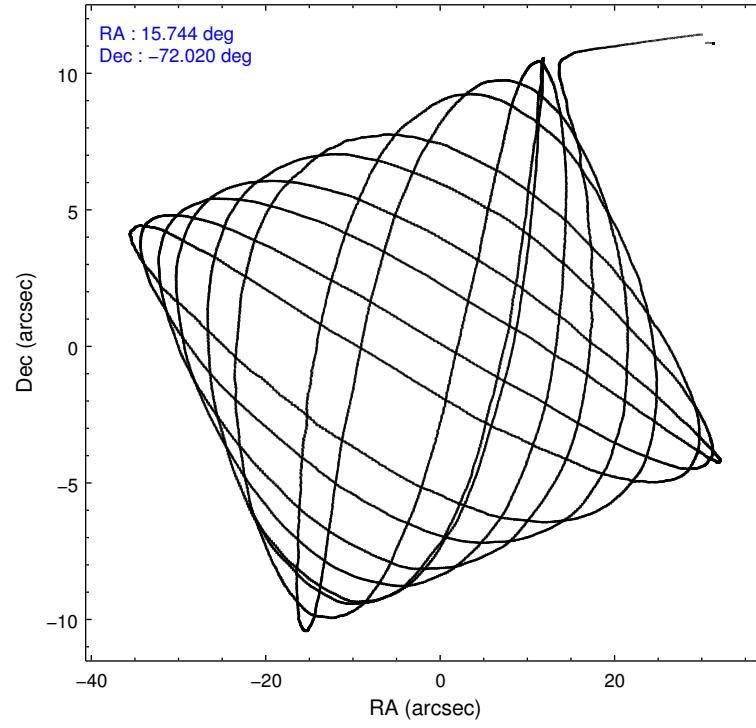
2.1.4 Events

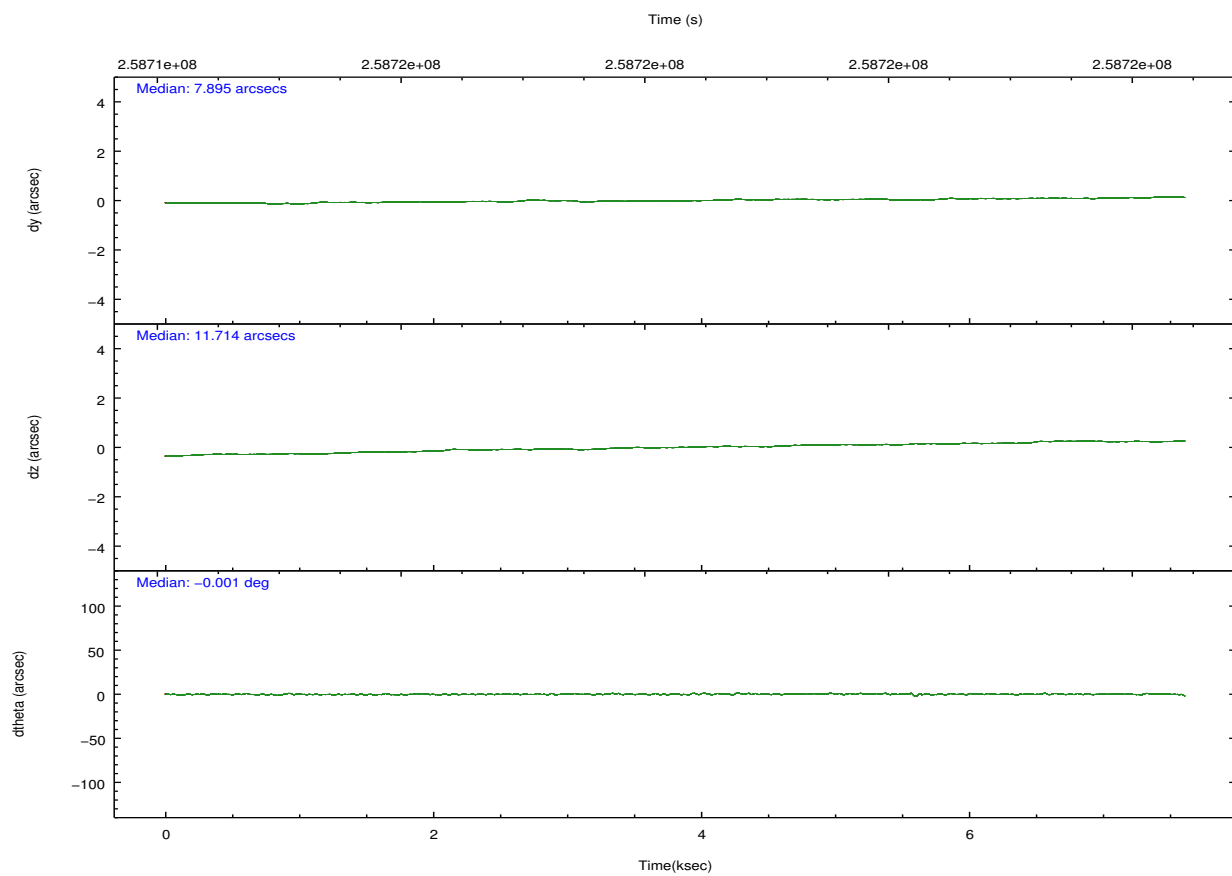
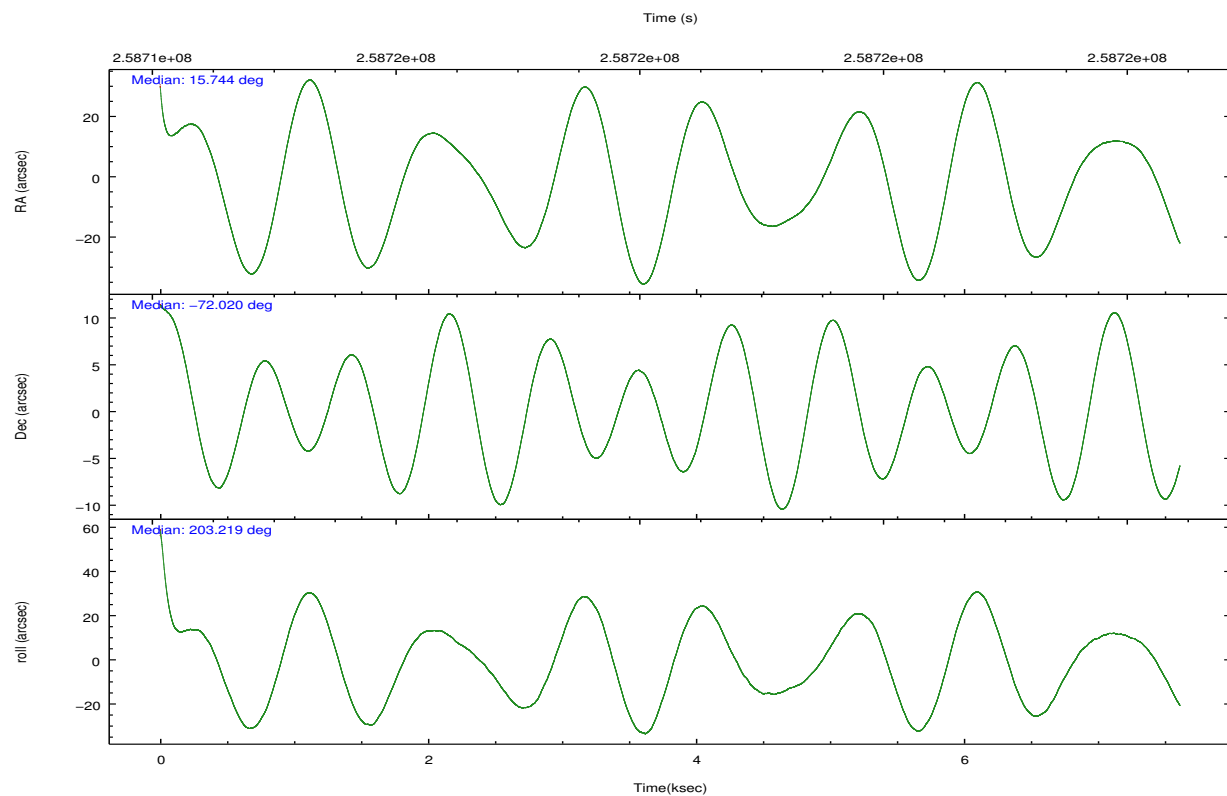
	ccd 0	ccd 1	ccd 2	ccd 3	ccd 6	ccd 7		ccd 0	ccd 1	ccd 2	ccd 3	ccd 6	ccd 7
level 1 events	55157	53803	64000	81514	60458	55482	grade 0 events	2149	2190	2336	22610	2281	2767
rejected events	50043	48410	58689	54086	54972	31089		3%	4%	3%	27%	3%	4%
rejected %	90%	89%	91%	66%	90%	56%	grade 1 events	24	24	29	229	35	60
								0%	0%	0%	0%	0%	0%
							grade 2 events	1351	1290	1341	2821	1364	5851
								2%	2%	2%	3%	2%	10%
							grade 3 events	658	672	601	1036	681	2740
								1%	1%	0%	1%	1%	4%
							grade 4 events	628	695	631	1069	652	2719
								1%	1%	0%	1%	1%	4%
							grade 5 events	1637	1913	1438	2108	2045	6057
								2%	3%	2%	2%	3%	10%
							grade 6 events	954	1169	985	1157	1202	13296
								1%	2%	1%	1%	1%	23%
							grade 7 events	47756	45850	56639	50484	52198	21992
								86%	85%	88%	61%	86%	39%

2.2 Compared Parameters

Parameter	Planned	Actual	Parameter	Planned	Actual
Instrument	ACIS	ACIS	Obspar format version number	7	7
Detector	ACIS-012367	ACIS-012367	Obspar file type	PREDICTED	ACTUAL
Grating	NONE	NONE	Obspar update status	NONE	UPDATED
Data mode	VFAINT	VFAINT	Number of optional ACIS chips dropped	0	0
Observation mode	POINTING	POINTING	On-chip summing requested	N	N
[deg] Pointing RA	15.796011	15.74336957164883	Subarray requested	NONE	NONE
[deg] Pointing Dec	-71.997955	-72.01995666469952	Alternating exposures requested	N	N
[deg] Pointing Roll	203.067462	203.2261305172084	[s] Primary exposure time	0.000000	3.2
[s] Window start time (MET)	247190464.184000	247190464.184000			
[s] Window stop time (MET)	260150465.184000	260150465.184000			
[mm] SIM focus pos	-0.782348	-0.7809083437167272			
[mm] SIM defocus	0	0.001439871863259334			
[mm] SIM translation stage pos	-233.592463	-233.5874344608287			
[mm] SIM translation stage offset	0	-0.005018542100998502			
[s] Observation start time (MET)	258714556.184000	258713057.60614			
Observation start date	2006-03-14T09:08:11	2006-03-14T08:44:17			
[s] Observation end time (MET)	258722056.184000	258722189.84407			
Observation end date	2006-03-14T11:13:11	2006-03-14T11:16:29			
Read mode	TIMED	TIMED			

2.3 Aspect



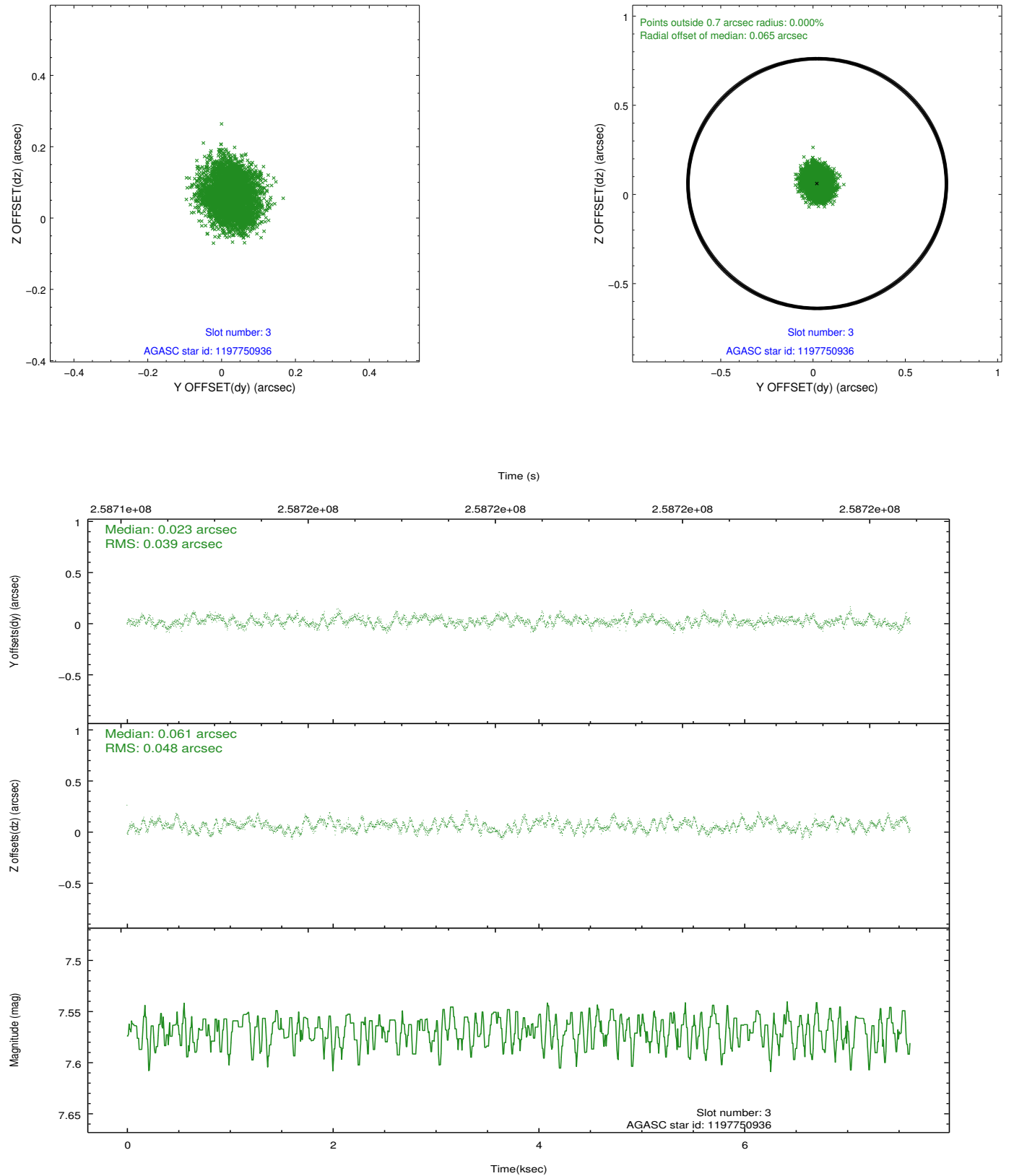


Slot Statistics

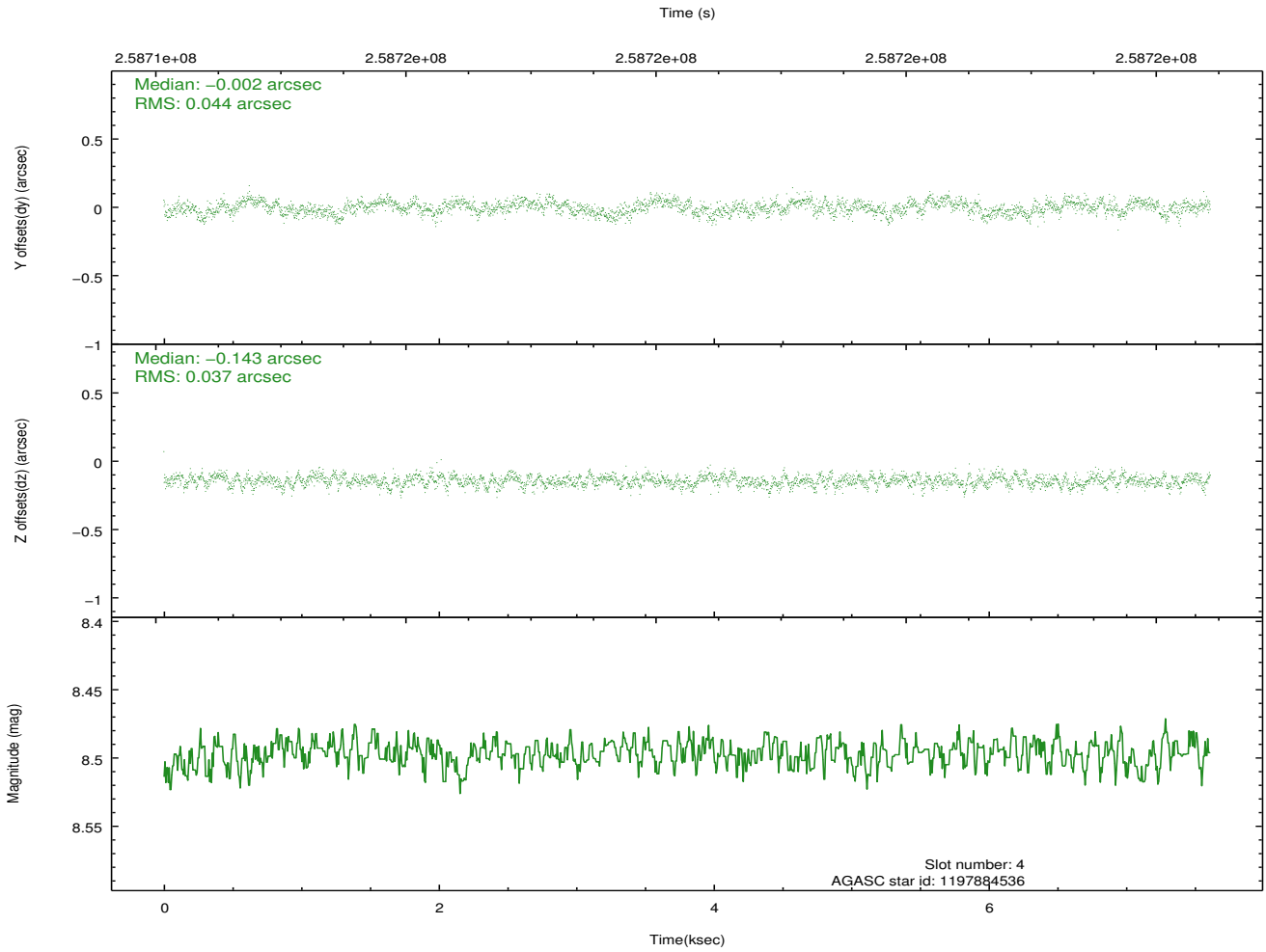
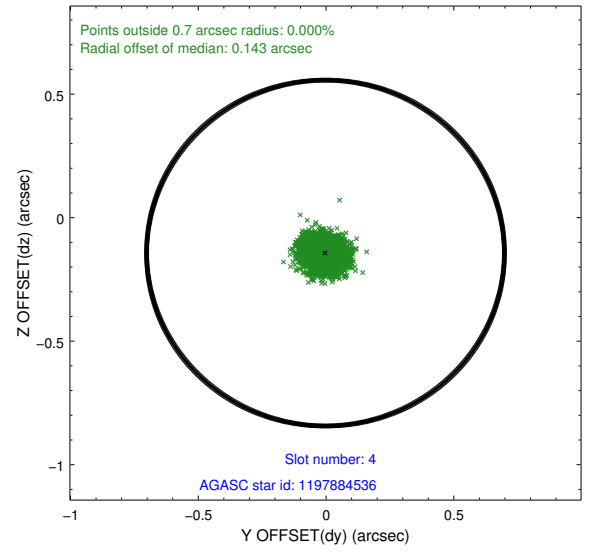
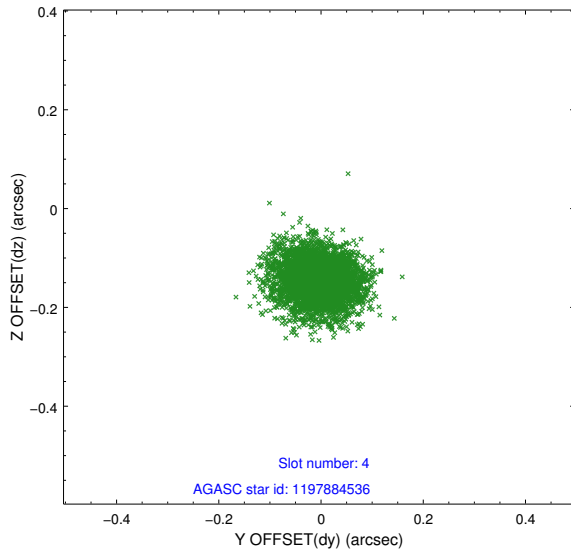
slot	status	id	mag	n_pts	med_dy	med_dz	dr1	dr2	ra	dec	mean_y	mean_z
0	FID	ACIS-I-1	7.24	1857	0.063	-0.037	0.008	0.012	0.000000	0.000000	931.80	-835.27
1	FID	ACIS-I-5	7.22	1857	-0.194	0.070	0.007	0.013	0.000000	0.000000	-1816.11	1062.01
2	FID	ACIS-I-6	7.25	1857	0.040	0.038	0.010	0.015	0.000000	0.000000	396.57	1707.28
3	GUIDE	1197750936	7.57	3714	0.023	0.061	0.067	0.103	15.387940	-71.549550	-203.43	-1665.31
4	GUIDE	1197884536	8.50	3713	-0.002	-0.143	0.061	0.099	17.160729	-71.835289	-1631.35	76.72
5	GUIDE	1197885328	7.25	3714	0.030	0.134	0.055	0.087	16.283090	-71.733943	-877.80	-656.76
6	GUIDE	1198189696	7.36	3713	-0.167	-0.129	0.056	0.089	15.223750	-72.697522	1551.33	2080.04
7	GUIDE	1197885104	9.36	3713	0.116	0.077	0.103	0.168	17.845067	-72.189368	-1789.39	1554.18

2.4 Star Slots

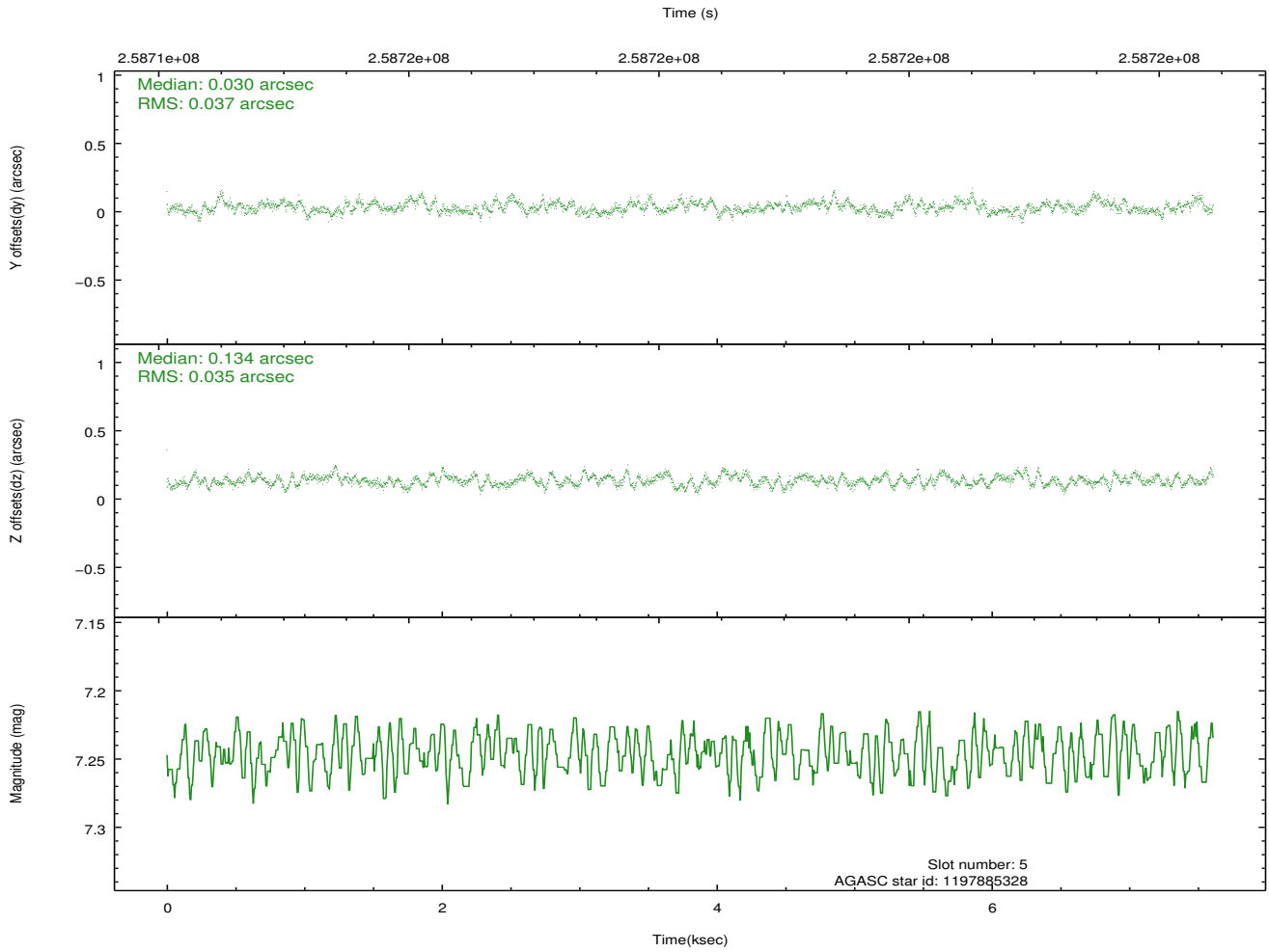
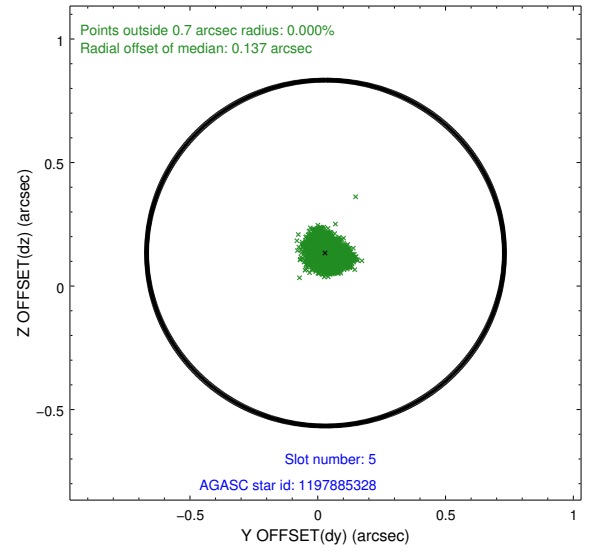
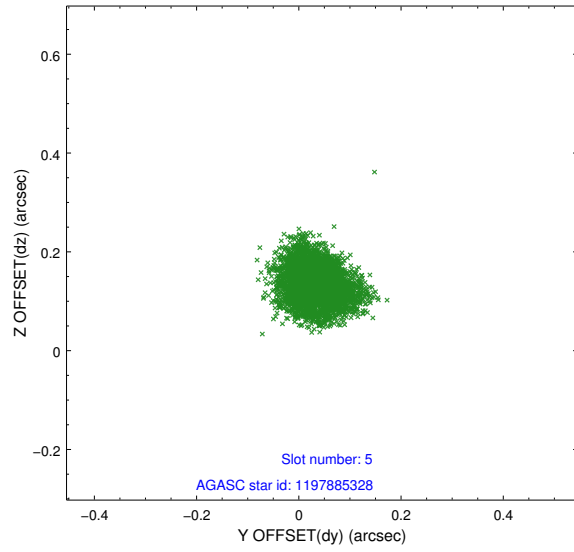
2.4.1 Slot 3



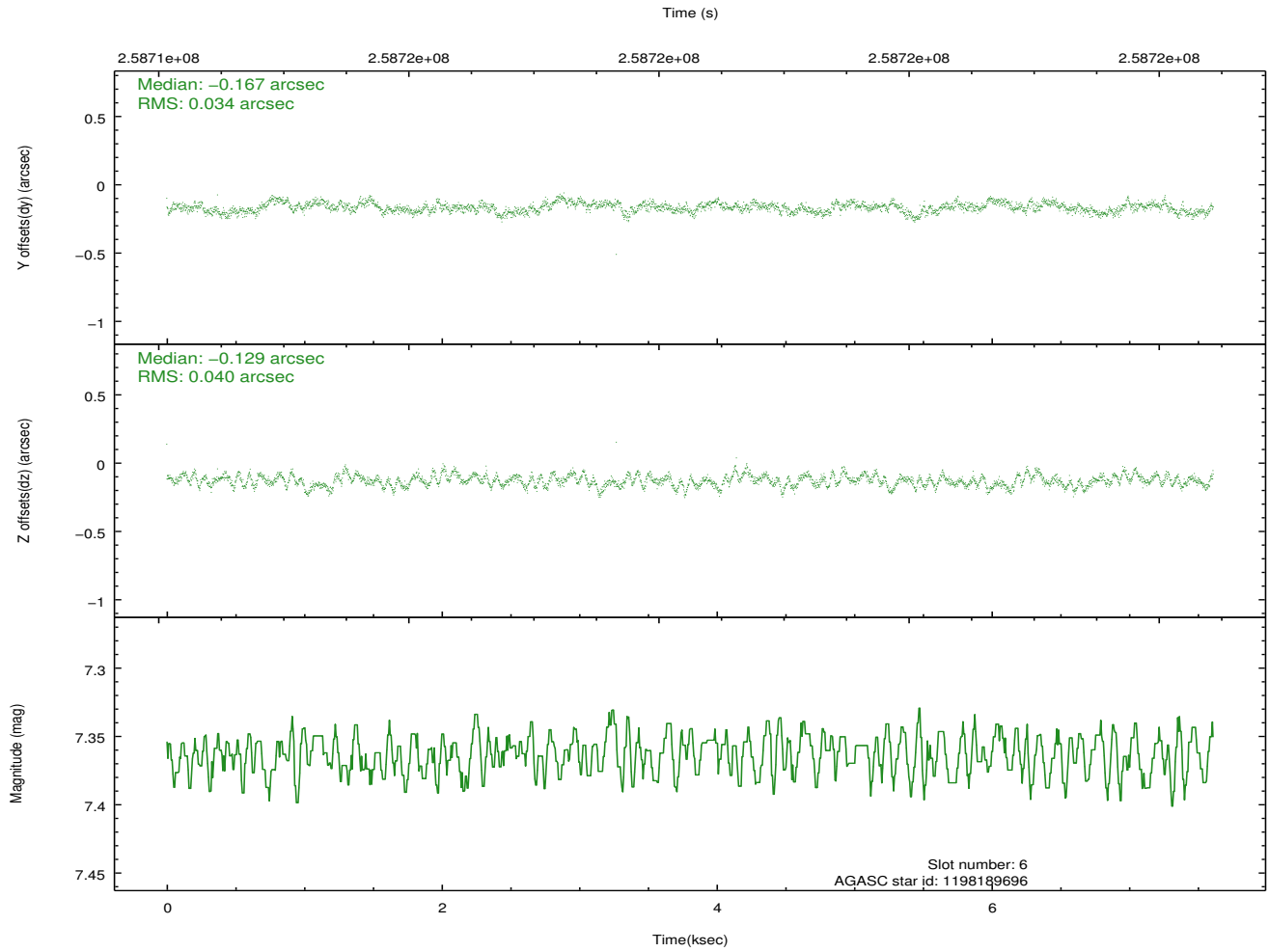
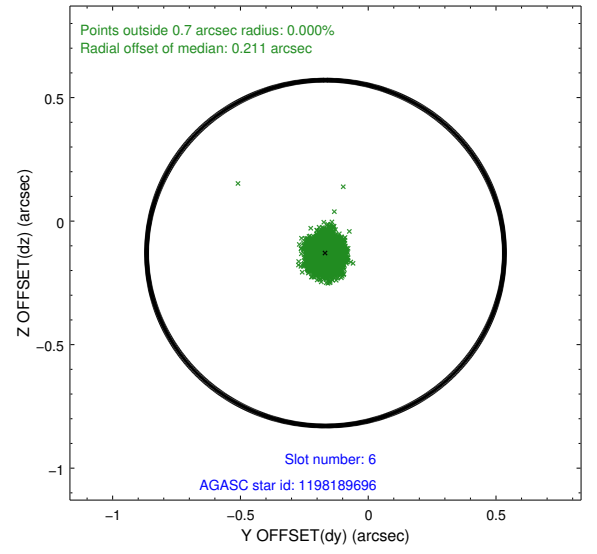
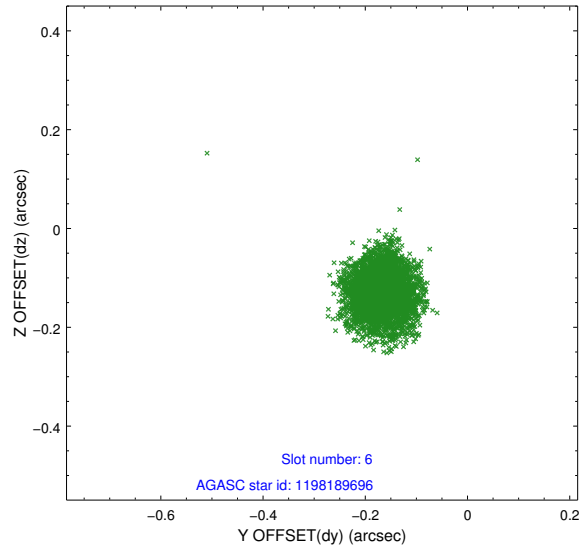
2.4.2 Slot 4



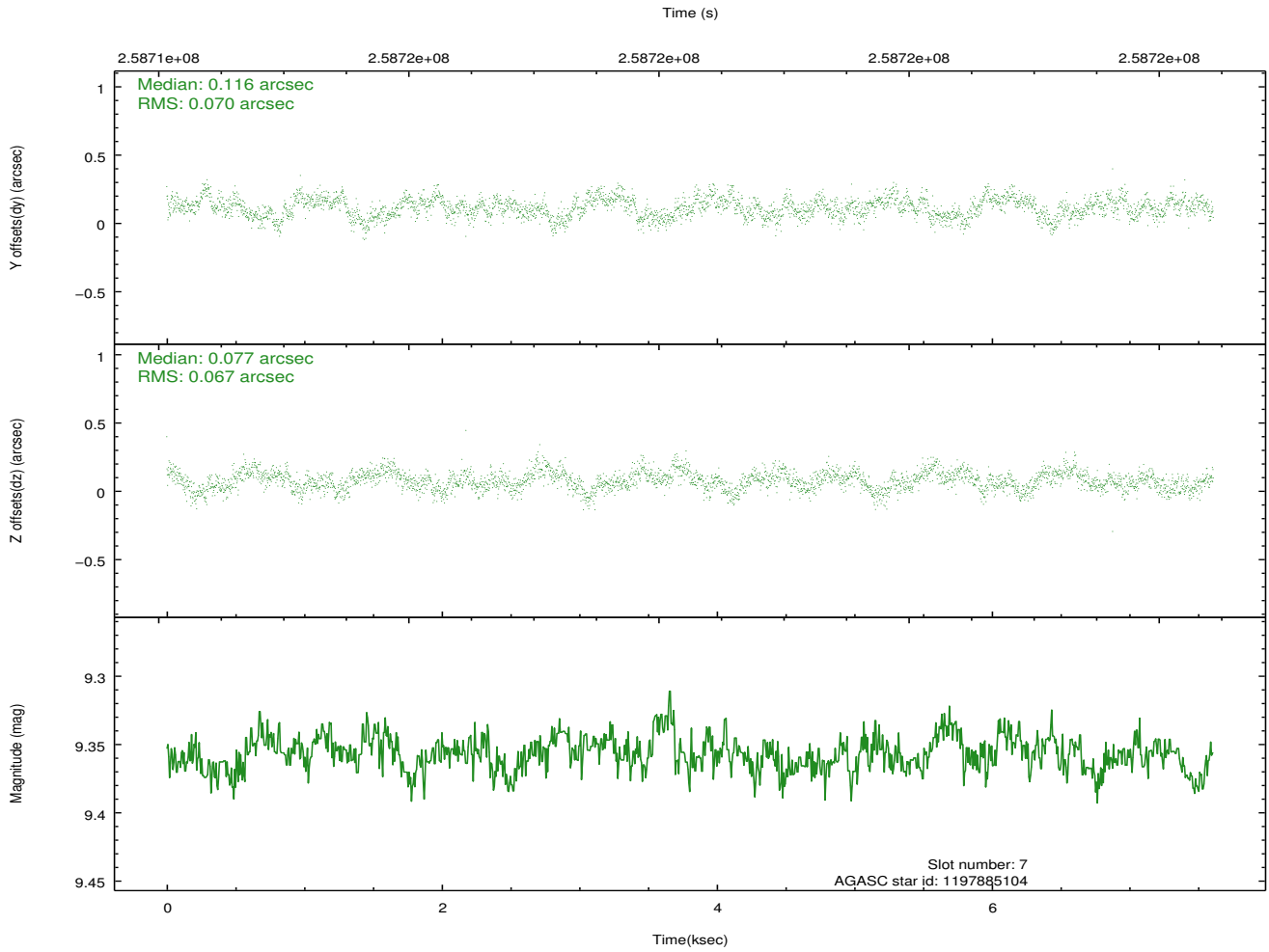
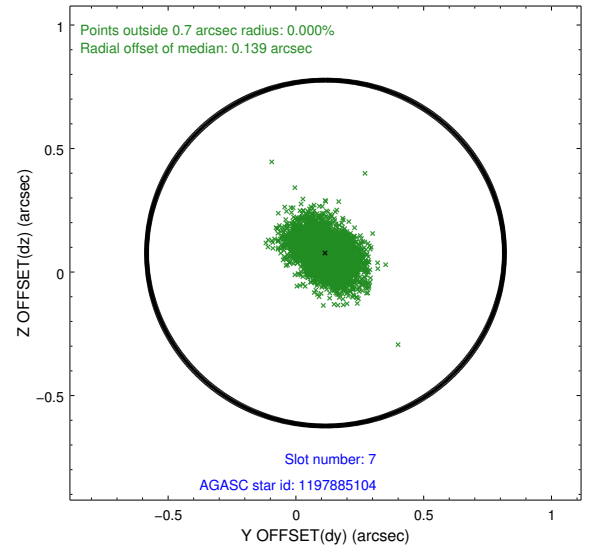
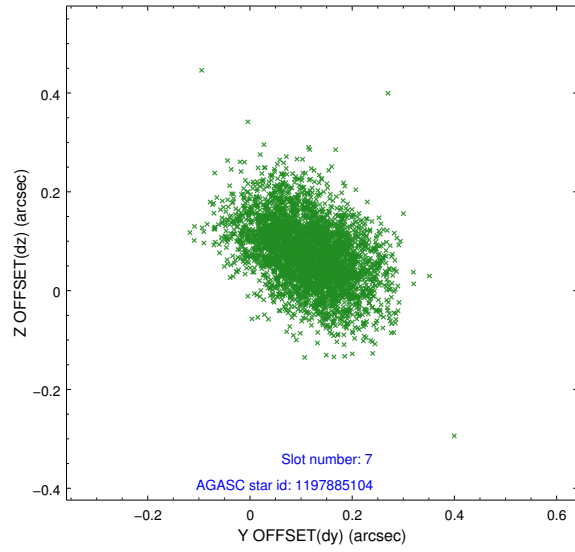
2.4.3 Slot 5



2.4.4 Slot 6

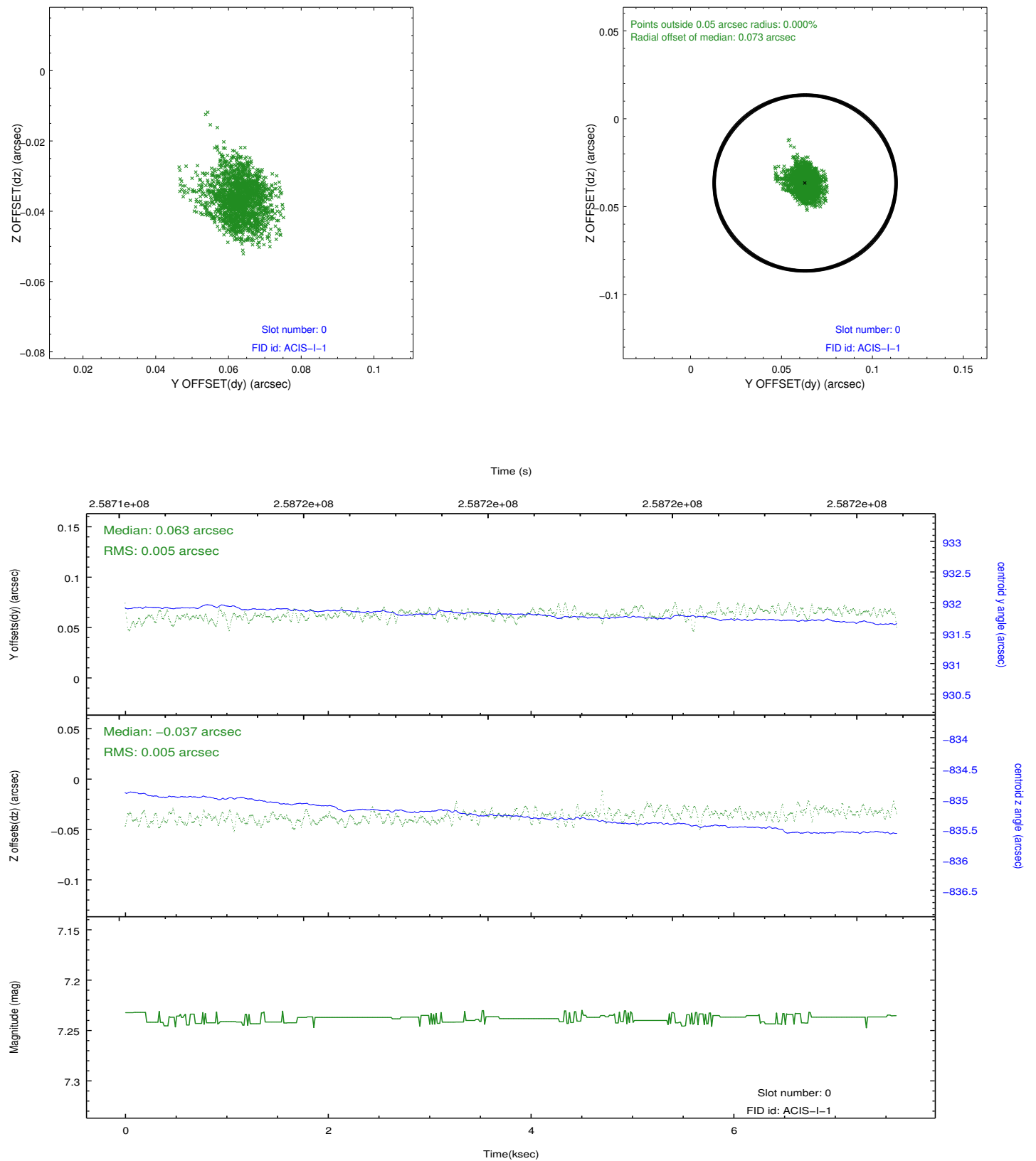


2.4.5 Slot 7

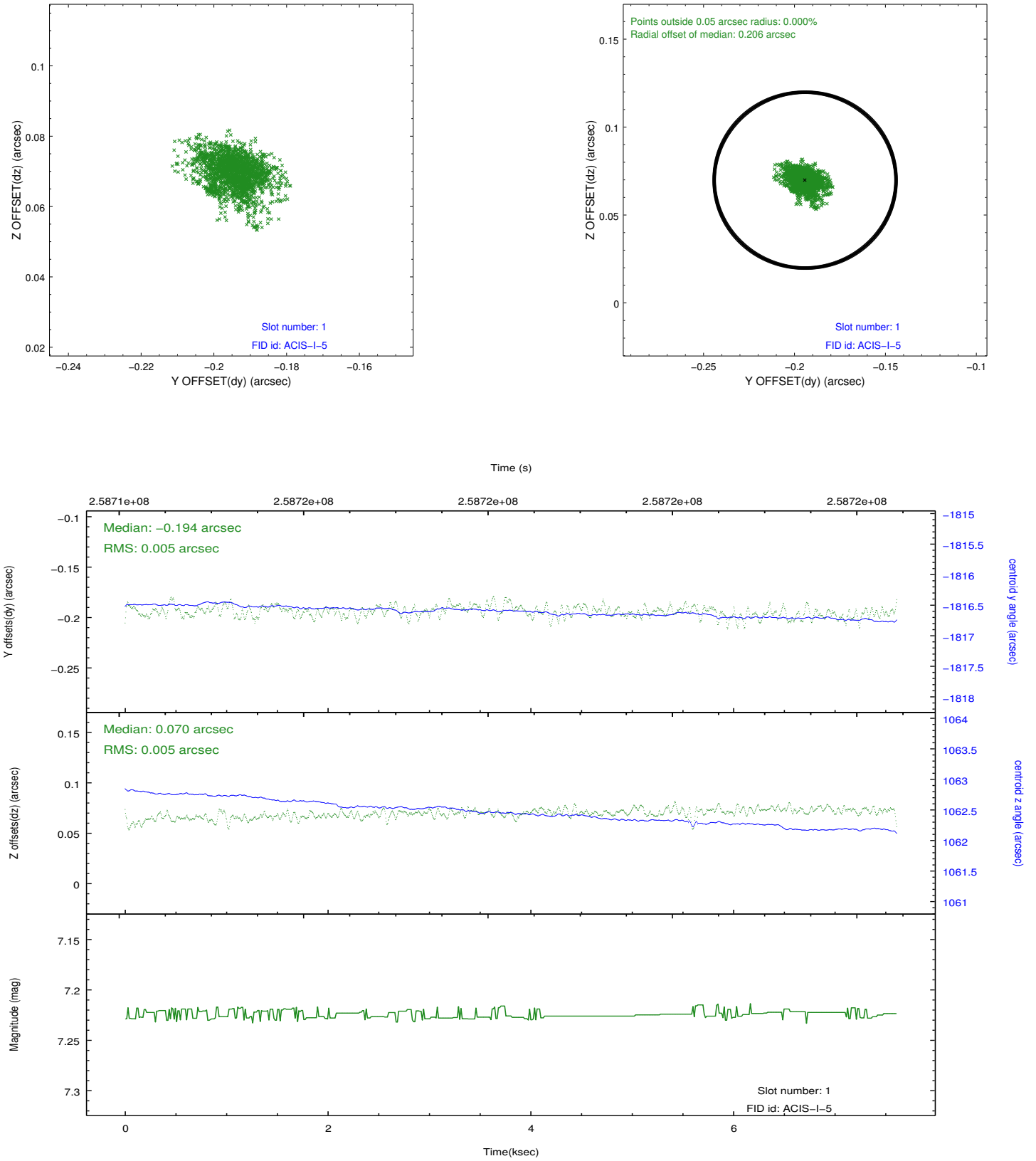


2.5 FID Slots

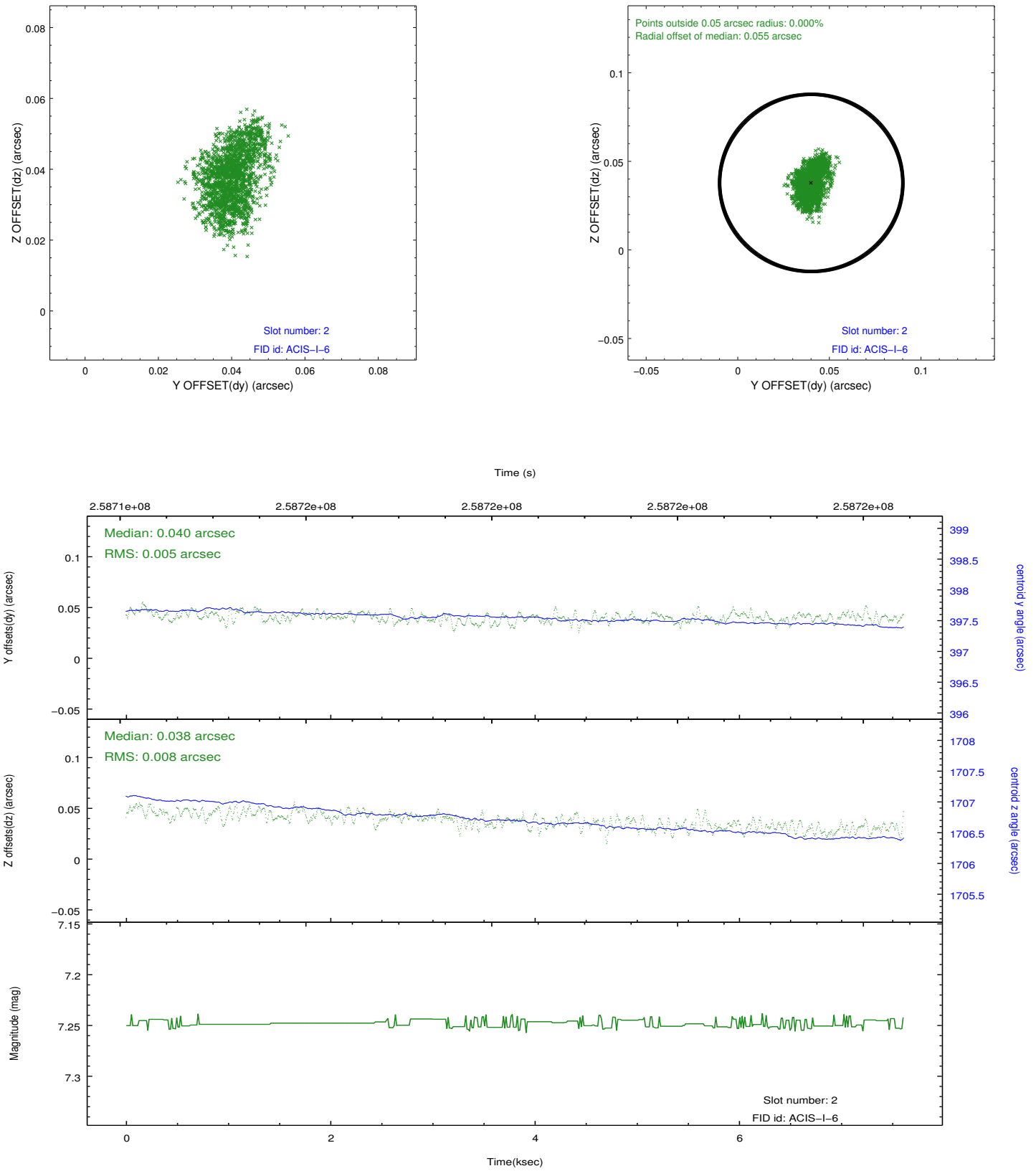
2.5.1 Slot 0



2.5.2 Slot 1



2.5.3 Slot 2



A Summary

A.1 Status

V&V Scientist	Jen Lauer
V&V Date (YYYY-MM-DD)	2012.03.28
V&V Edition	1
V&V Disposition and Status	OK
V&V Charge Time	7.603159

A.2 Comments

Window constraint met.