

# V&V Reference Report

## L2 ASCDS Version : 8.4.3

Observation 6551 - L2 Version 4  
Chandra X-Ray Center

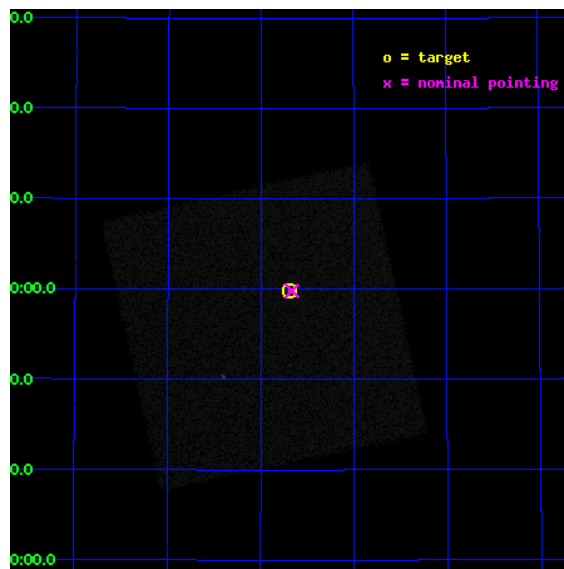
L2 Processing Date : Aug 10 2012

## Contents

<b>1</b>	<b>Front</b>	<b>2</b>
<b>2</b>	<b>OBI</b>	<b>3</b>
2.1	OBI . . . . .	3
2.1.1	Images . . . . .	3
2.1.2	Parameters . . . . .	4
2.1.3	Events . . . . .	4
2.2	Compared Parameters . . . . .	5
2.3	Aspect . . . . .	6
2.4	Star Slots . . . . .	9
2.4.1	Slot 3 . . . . .	9
2.4.2	Slot 4 . . . . .	10
2.4.3	Slot 5 . . . . .	11
2.4.4	Slot 6 . . . . .	12
2.4.5	Slot 7 . . . . .	13
2.5	FID Slots . . . . .	14
2.5.1	Slot 0 . . . . .	14
2.5.2	Slot 1 . . . . .	15
2.5.3	Slot 2 . . . . .	16
<b>A</b>	<b>Summary</b>	<b>17</b>
A.1	Status . . . . .	17
A.2	Comments . . . . .	17

# 1 Front

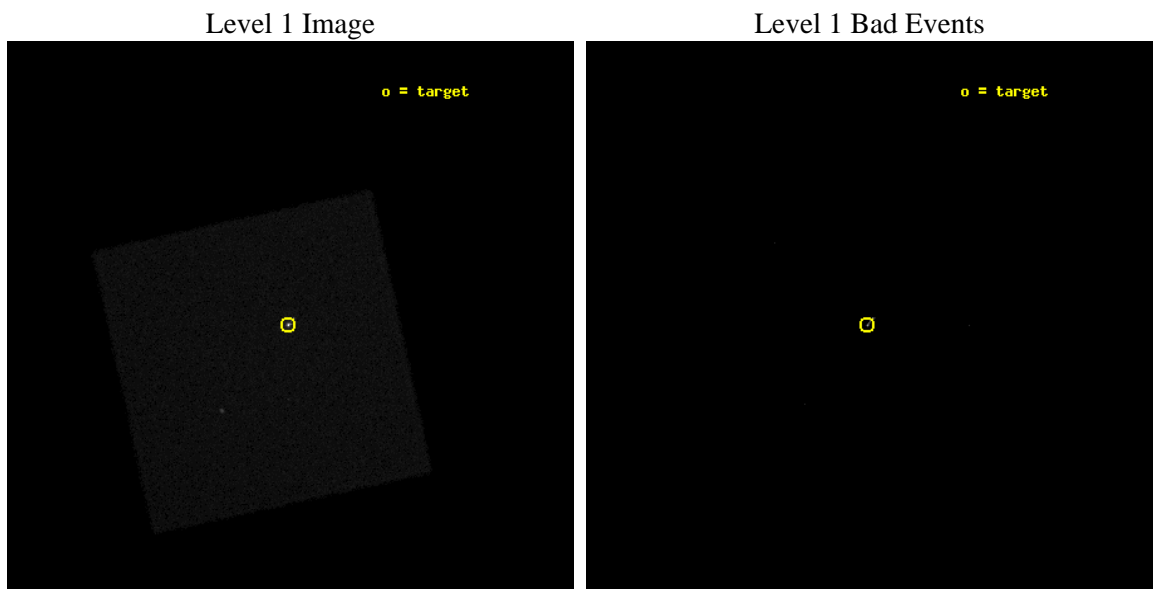
seq_num	290644	Sequence number
obs_id	6551	Observation id
title	Improving the De-Gap Corrections for the HRC-I	Proposal title
observer	Dr. CXC Calibration	Principal investigator
object	Capella	Source name
ra_targ	79.1725	Observer's specified target RA [deg]
dec_targ	45.998	Observer's specified target Dec [deg]
ra_nom	79.166280806828	Nominal RA [deg]
dec_nom	45.997158284642	Nominal Dec [deg]
roll_nom	212.69382256168	Nominal Roll [deg]
revision	4	Processing version of data
ontime	5189.831490308	[s]
livetime	5142.8520515642	Ontime multiplied by DTCOR
l2events	323489	Number of level 2 events



## 2 OBI

### 2.1 OBI

#### 2.1.1 Images



### 2.1.2 Parameters

obi_num	1	Obi number	sched_exp_time	5000.000000	[s] Scheduled observation exposure time
ascdsver	8.4.5	Processing system revision	ontime	5189.831490308	[s]
caldbver	4.5.1.1	&#160	l1events	456431	Number of level 1 events
date	2012-08-10T20:42:20	Date and time of file creation			
revision	4	Processing version of data			

### 2.1.3 Events

#### Level 1 Events

	<b>segment 0</b>
level 1 events	456431
rejected events	26242
rejected %	5%

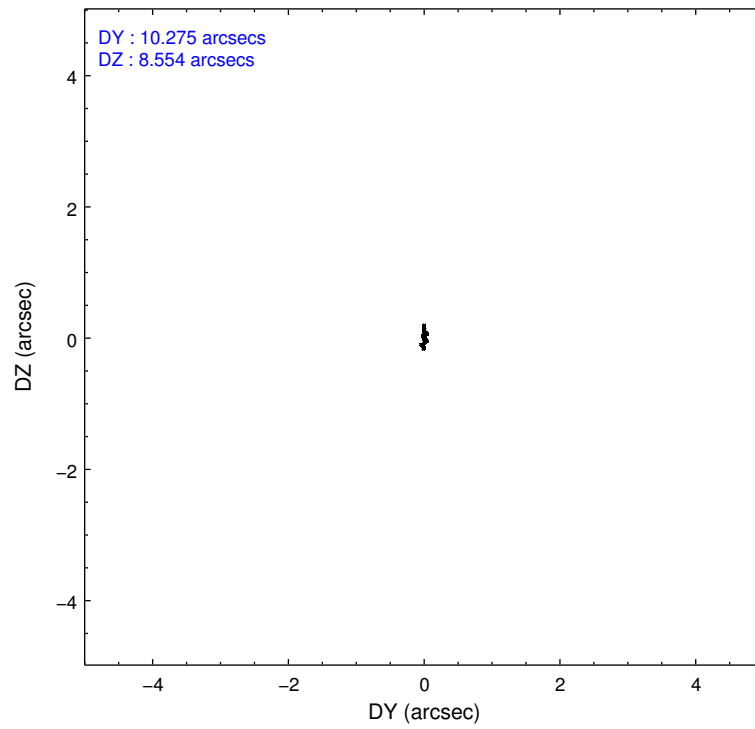
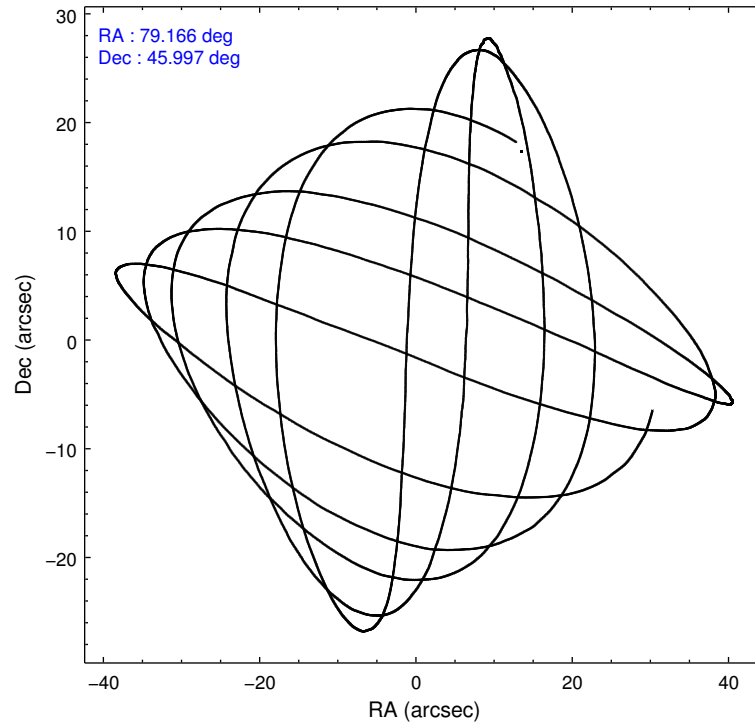


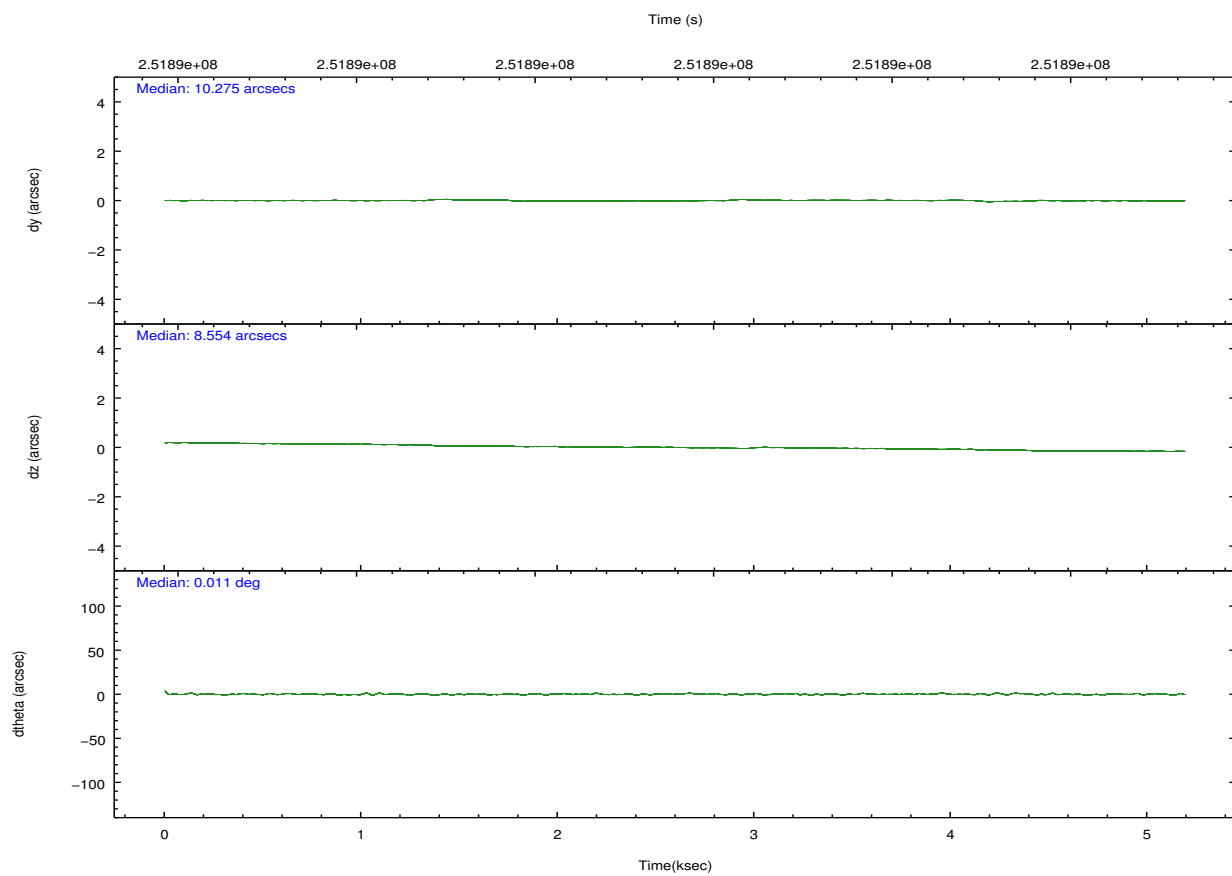
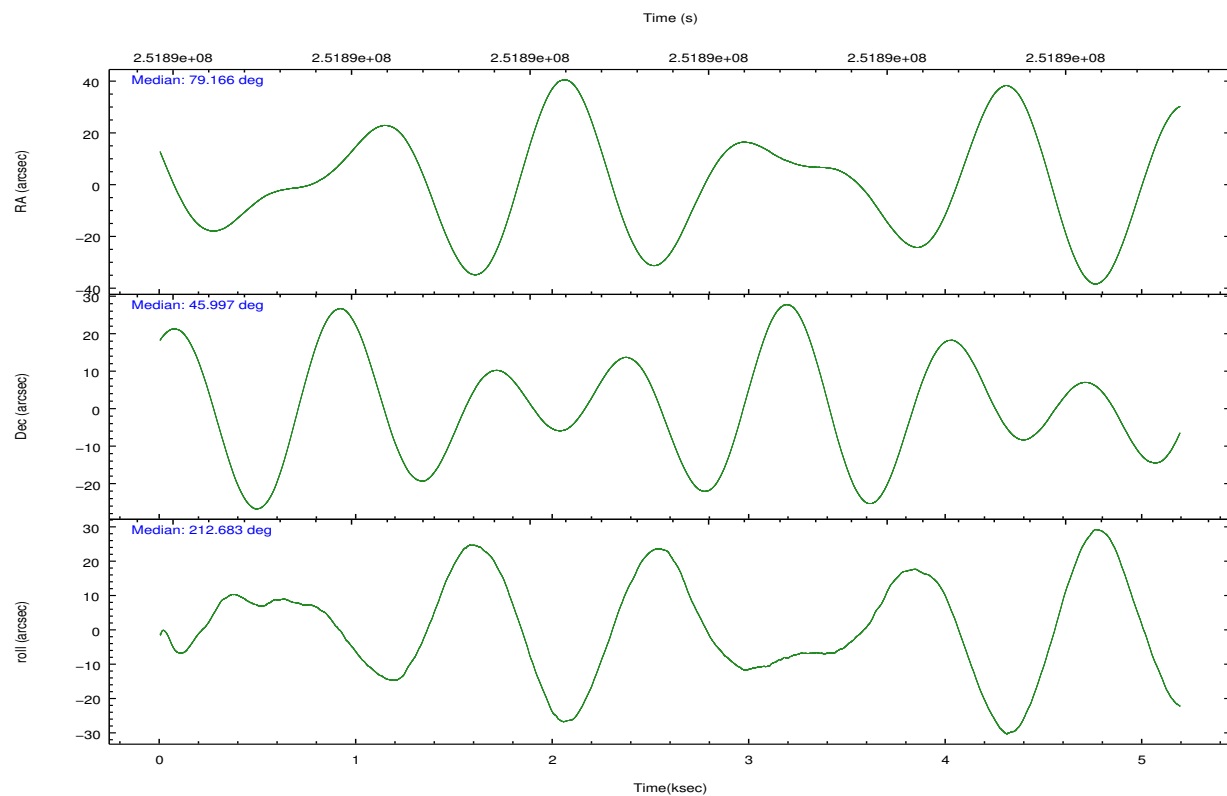
## 2.2 Compared Parameters

Parameter	Planned	Actual
Instrument	HRC	HRC
Detector	HRC-I	HRC-I
Grating	NONE	NONE
Data mode	OBSERVING	OBSERVING
Observation mode	POINTING	POINTING
[deg] Pointing RA	79.183688	79.16628080682784
[deg] Pointing Dec	46.021632	45.99715828464246
[deg] Pointing Roll	212.776775	212.6938225616782
[mm] SIM focus pos	-1.040293	-1.038866356238299
[mm] SIM defocus	0	0.001426264420575141
[mm] SIM translation stage pos	111.985494	111.9800605855777
[mm] SIM translation stage offset	15	15.00542830602384
[s] Observation start time (MET)	251887380.184000	251887003.67688
Observation start date	2005-12-25T08:41:56	2005-12-25T08:36:43
[s] Observation end time (MET)	251892380.184000	251892513.56463
Observation end date	2005-12-25T10:05:16	2005-12-25T10:08:33

Parameter	Planned	Actual
Obspar format version number	7	7
Obspar file type	PREDICTED	ACTUAL
Obspar update status	NONE	UPDATED

## 2.3 Aspect



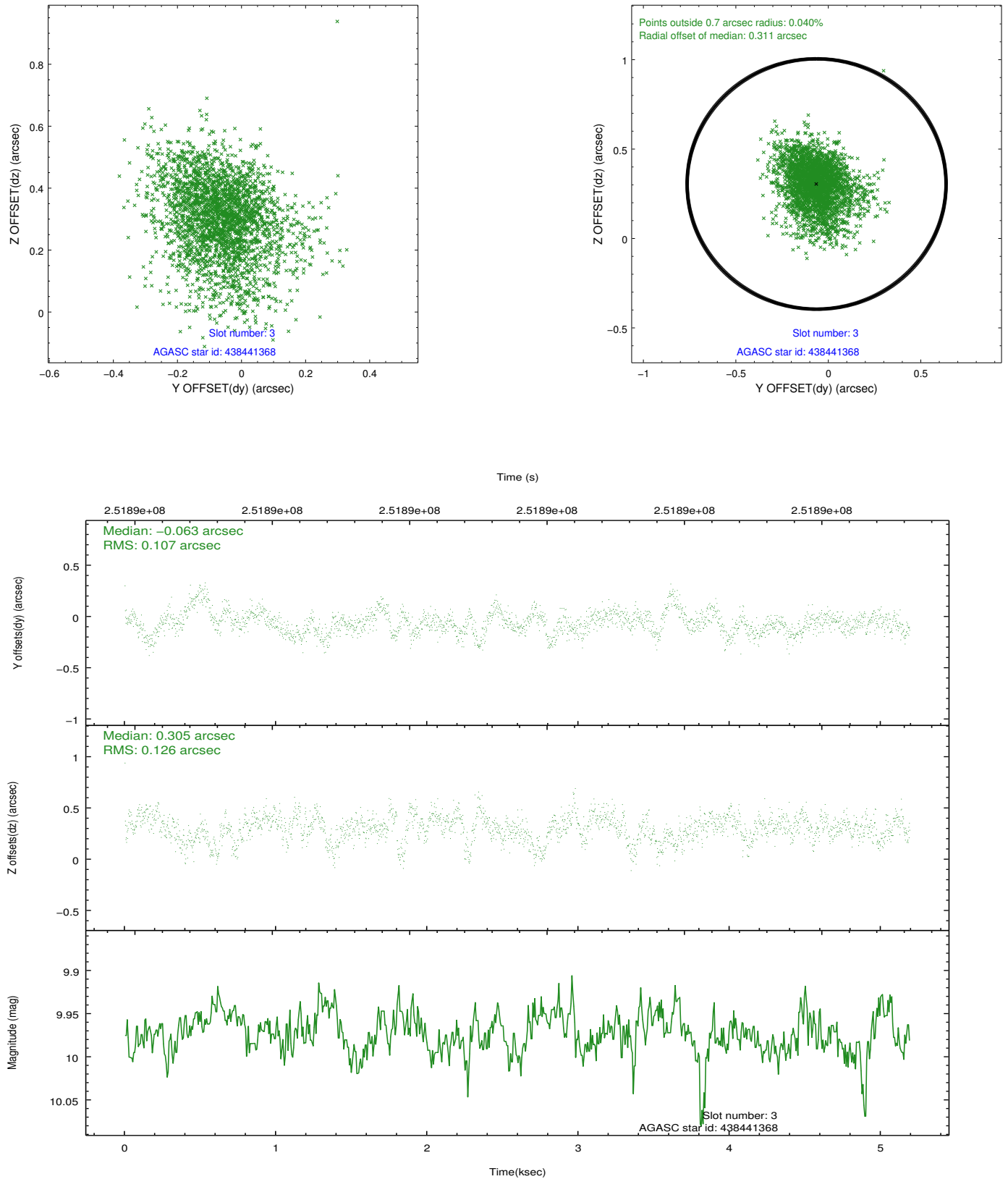


### Slot Statistics

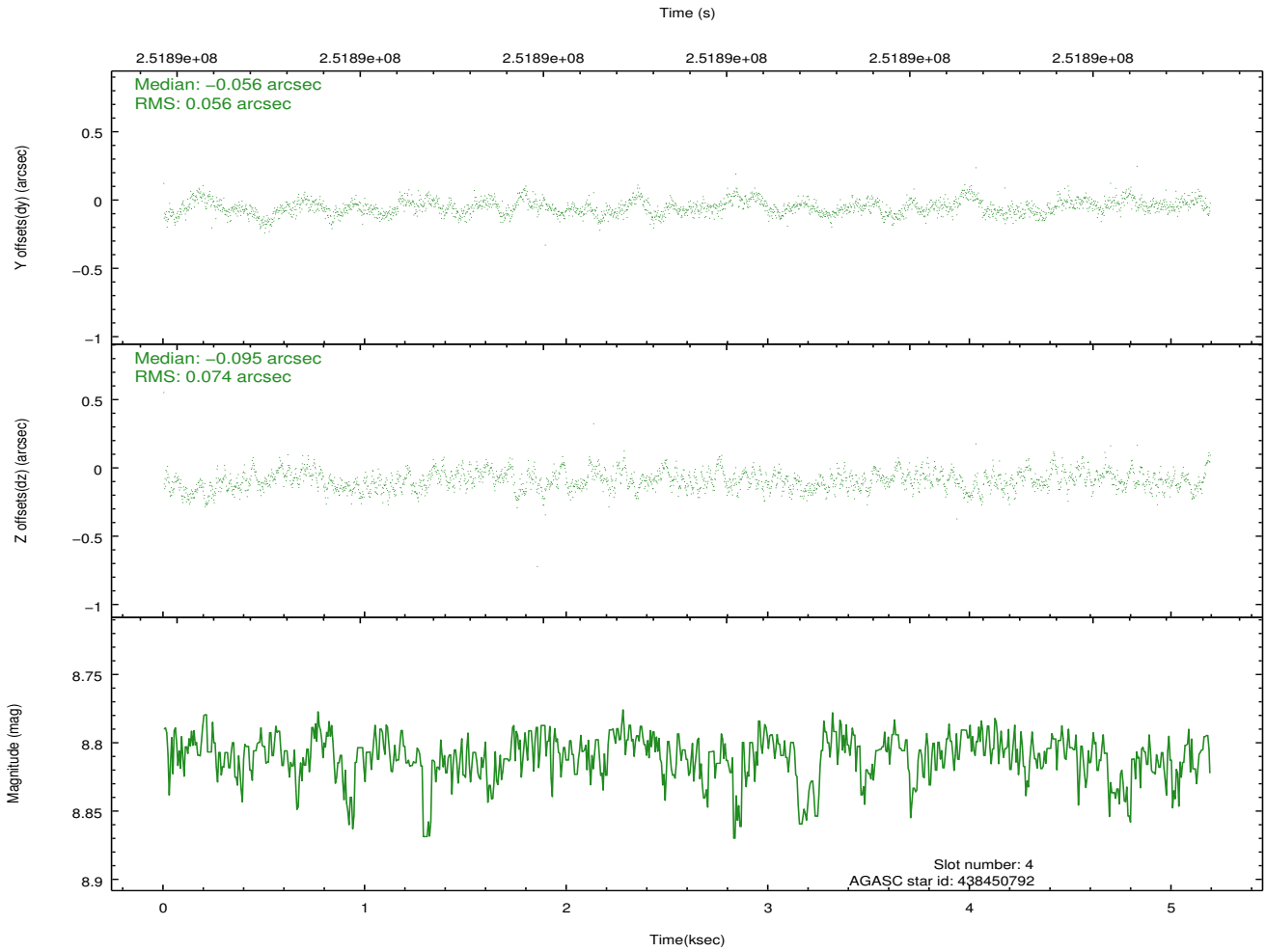
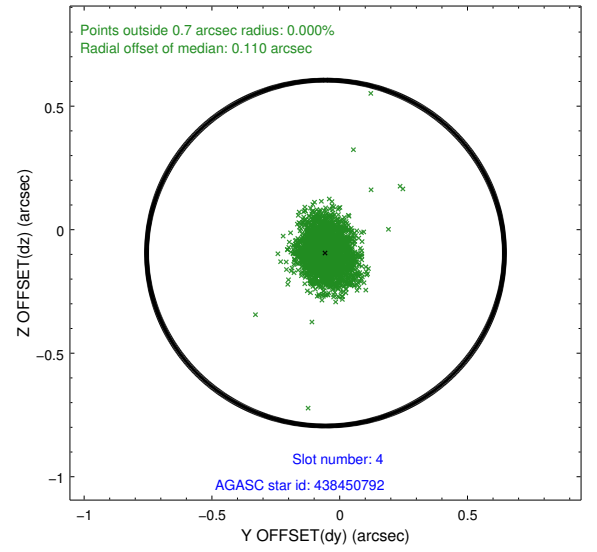
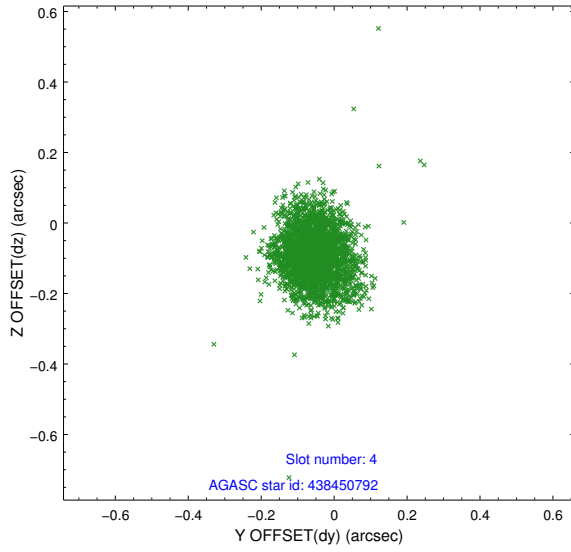
slot	status	id	mag	n_pts	med_dy	med_dz	dr1	dr2	ra	dec	mean_y	mean_z
0	FID	HRC-I-1	6.96	1266	-0.041	0.253	0.009	0.015	0.000000	0.000000	-765.45	-989.34
1	FID	HRC-I-2	7.02	1266	0.064	-0.025	0.007	0.012	0.000000	0.000000	845.81	-990.41
2	FID	HRC-I-3	7.05	1266	0.097	-0.315	0.007	0.014	0.000000	0.000000	-1193.89	1315.53
3	GUIDE	438441368	9.97	2529	-0.063	0.305	0.171	0.296	78.646413	46.420494	341.08	-1932.23
4	GUIDE	438450792	8.81	2528	-0.056	-0.095	0.096	0.155	78.654240	46.382628	399.79	-1807.83
5	GUIDE	440150048	7.13	2533	0.008	-0.136	0.077	0.127	79.112838	46.416060	-621.00	-1289.76
6	GUIDE	440163960	8.88	2532	-0.012	-0.037	0.082	0.137	79.298370	45.827072	136.18	744.27
7	GUIDE	440164960	8.31	2532	0.116	-0.037	0.085	0.132	79.132526	46.140947	-125.37	-429.38

## 2.4 Star Slots

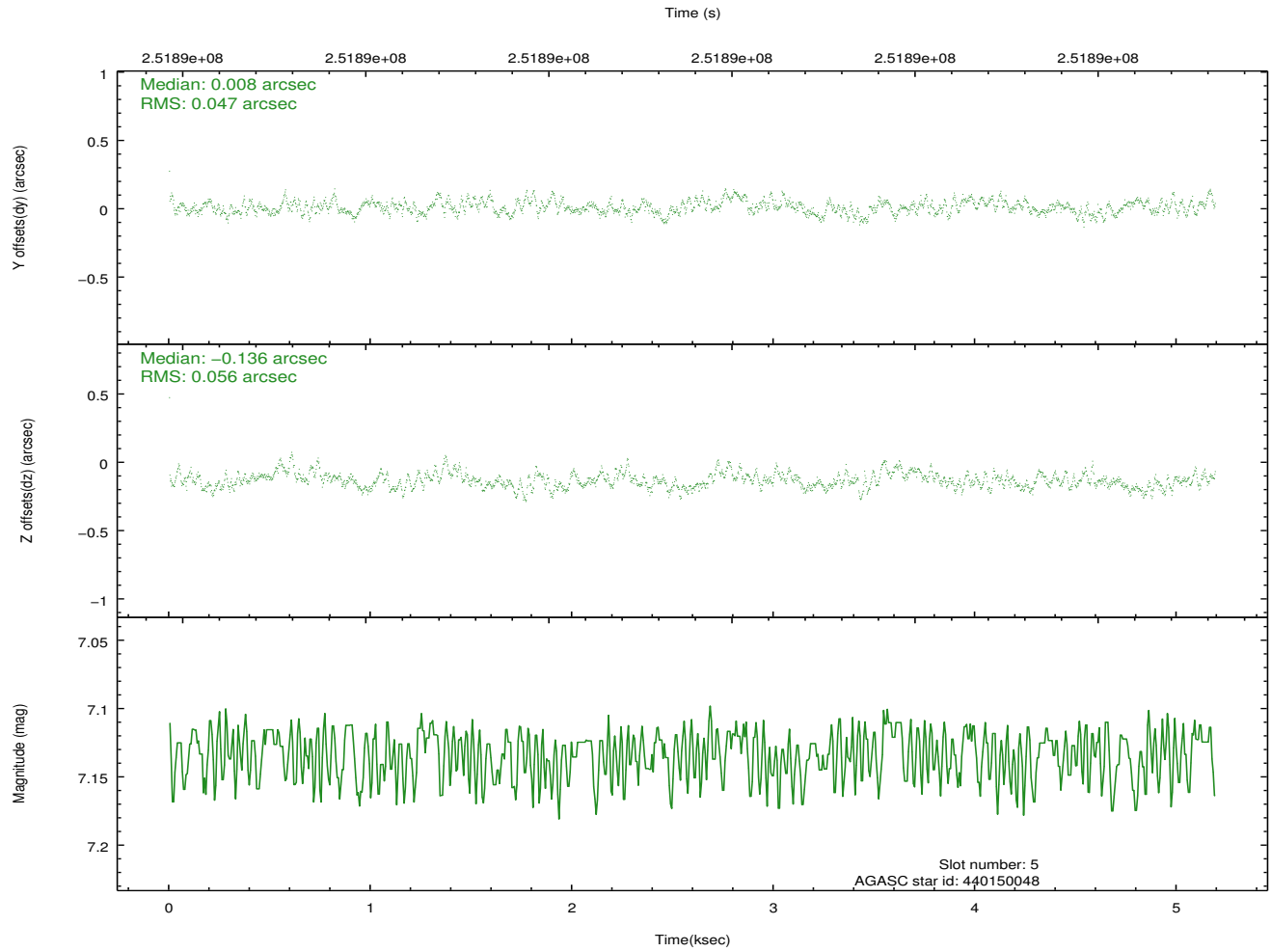
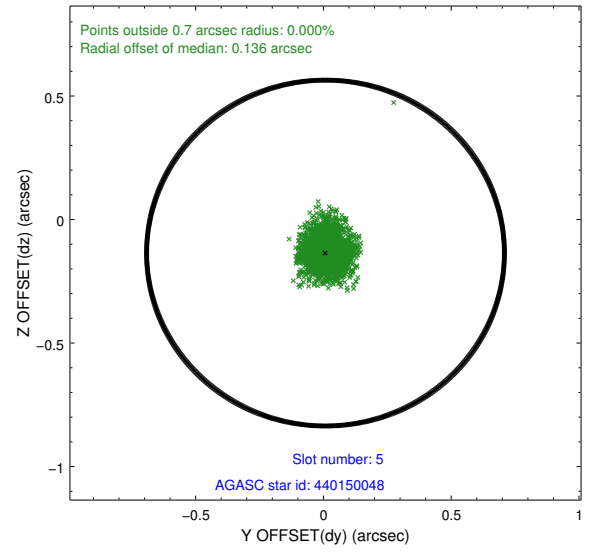
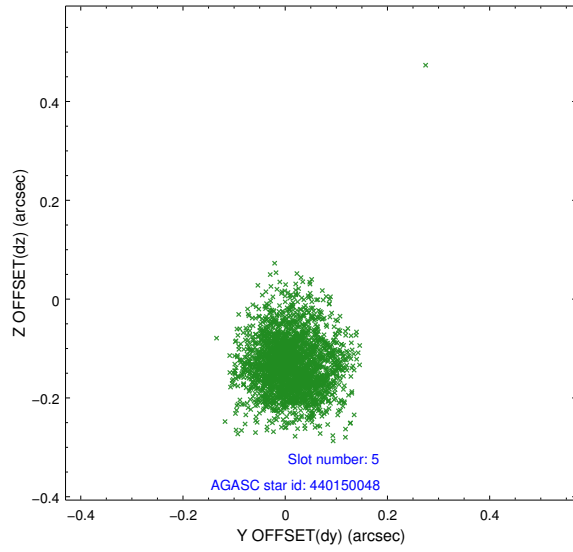
### 2.4.1 Slot 3



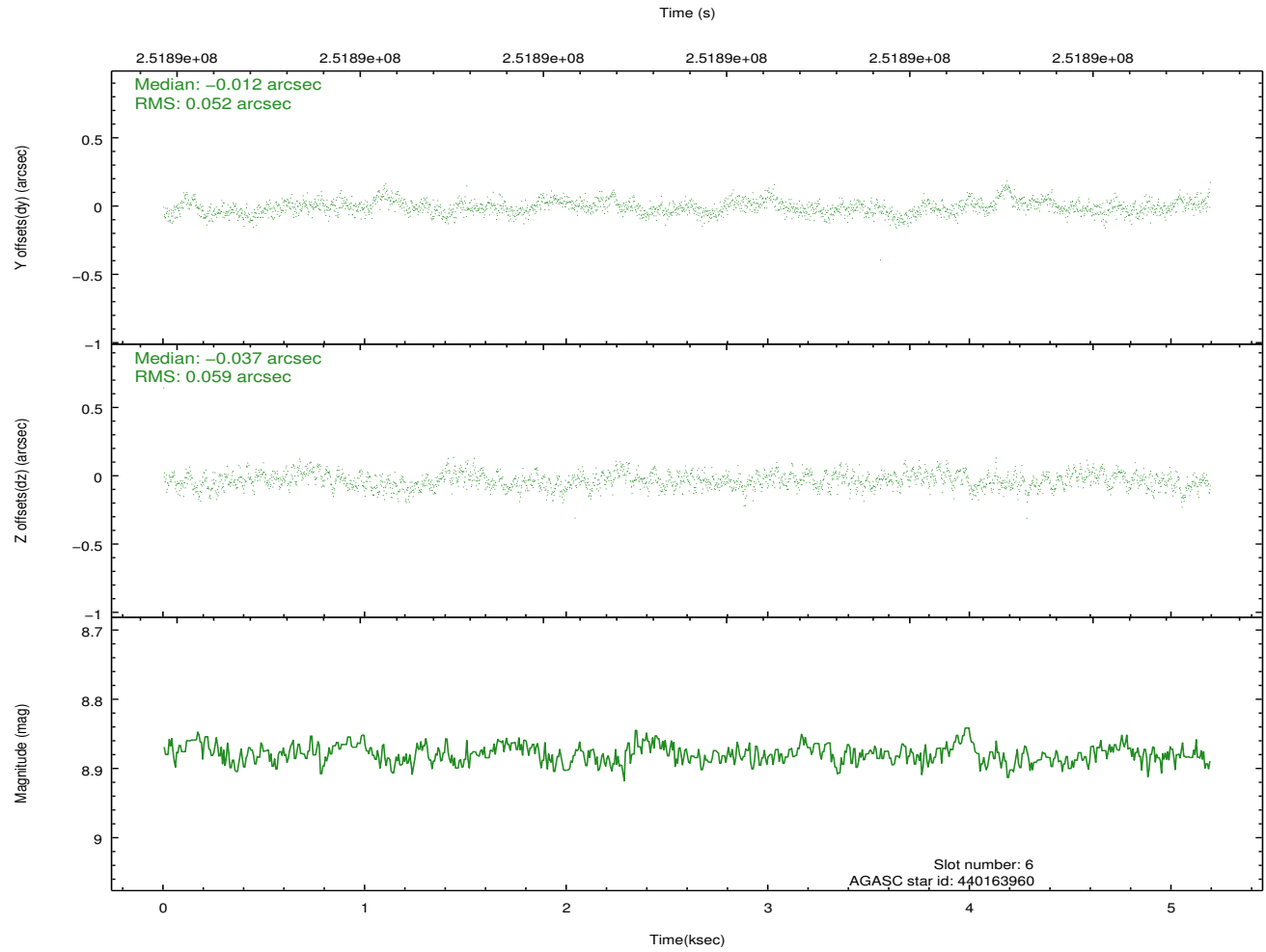
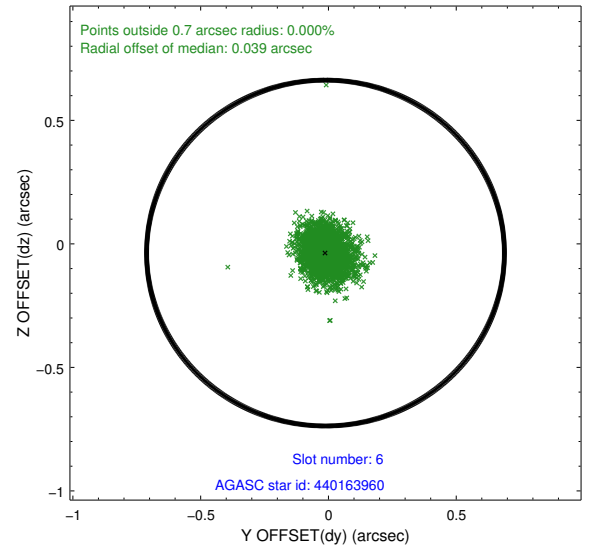
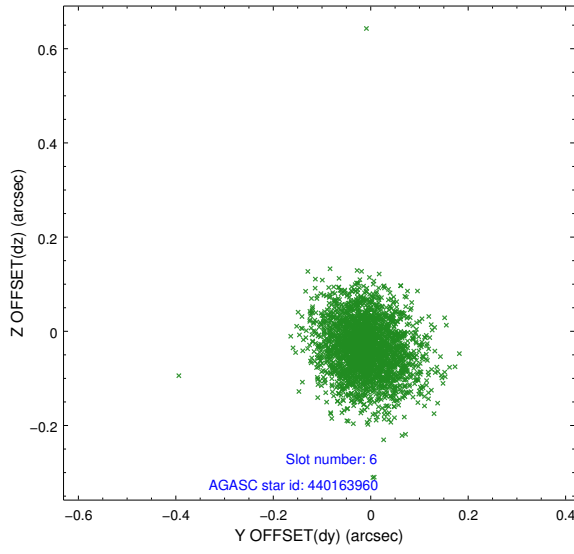
## 2.4.2 Slot 4



### 2.4.3 Slot 5

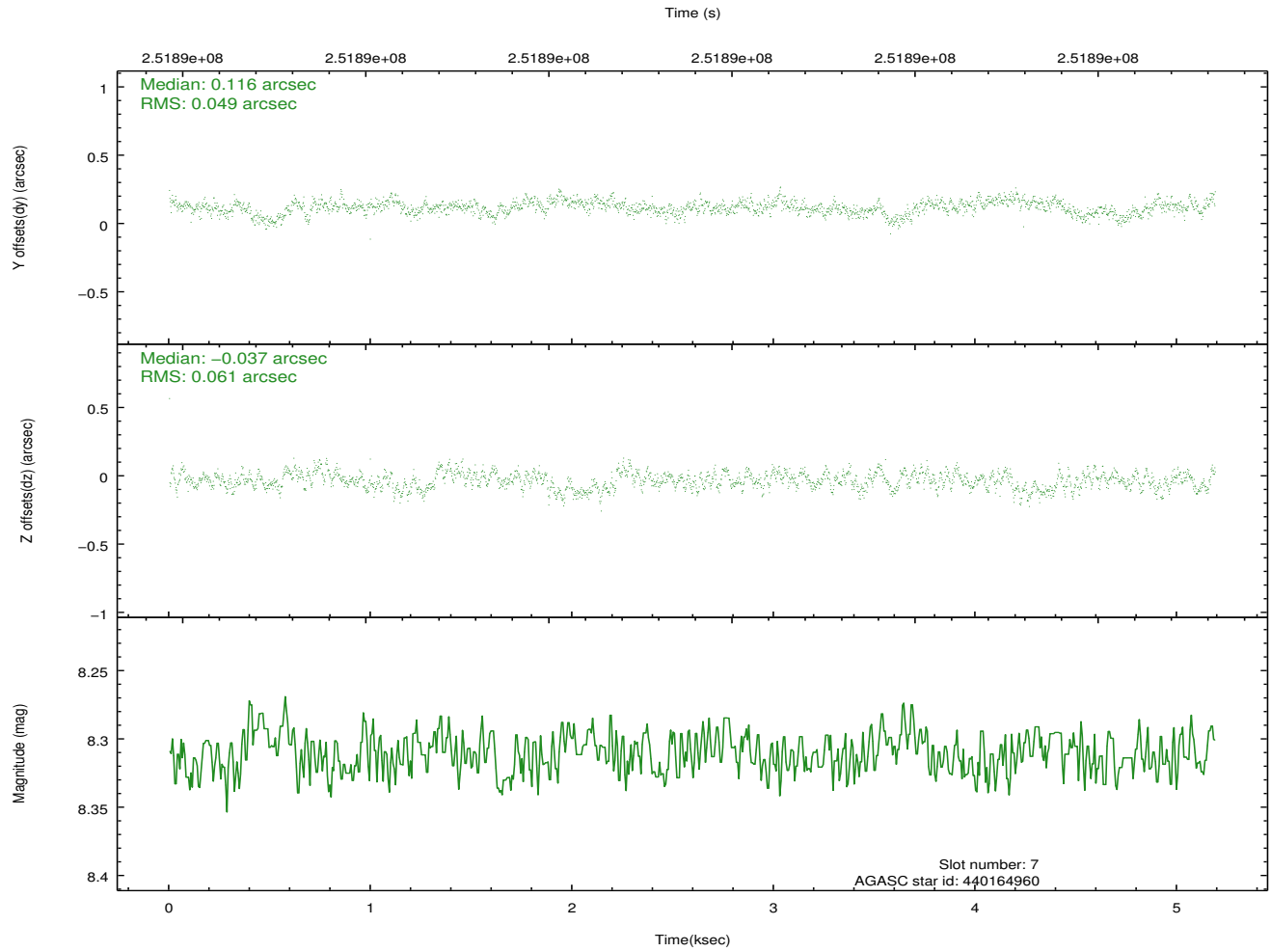
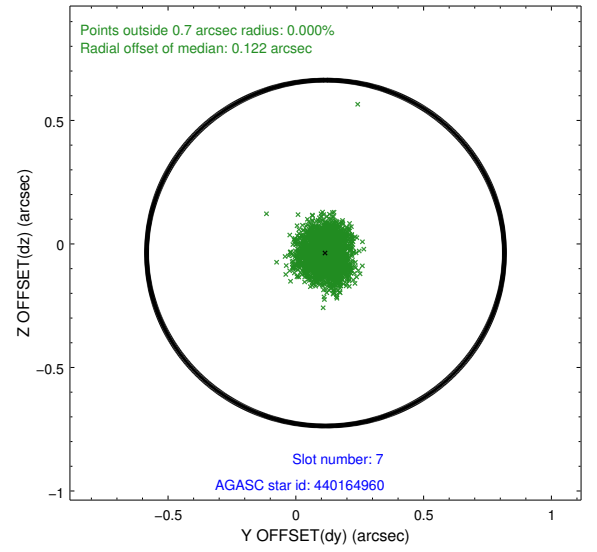
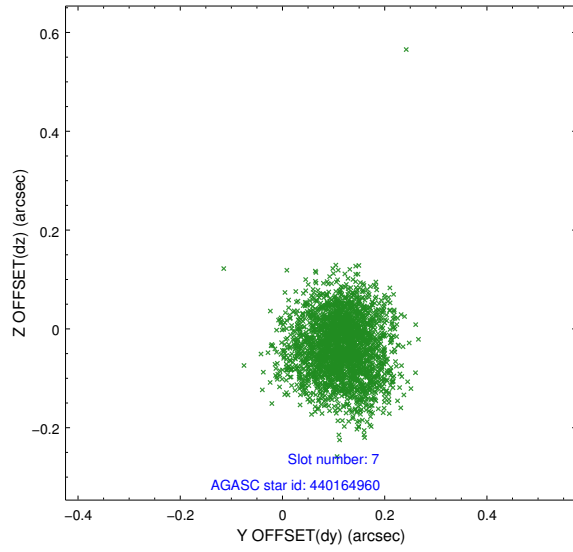


## 2.4.4 Slot 6



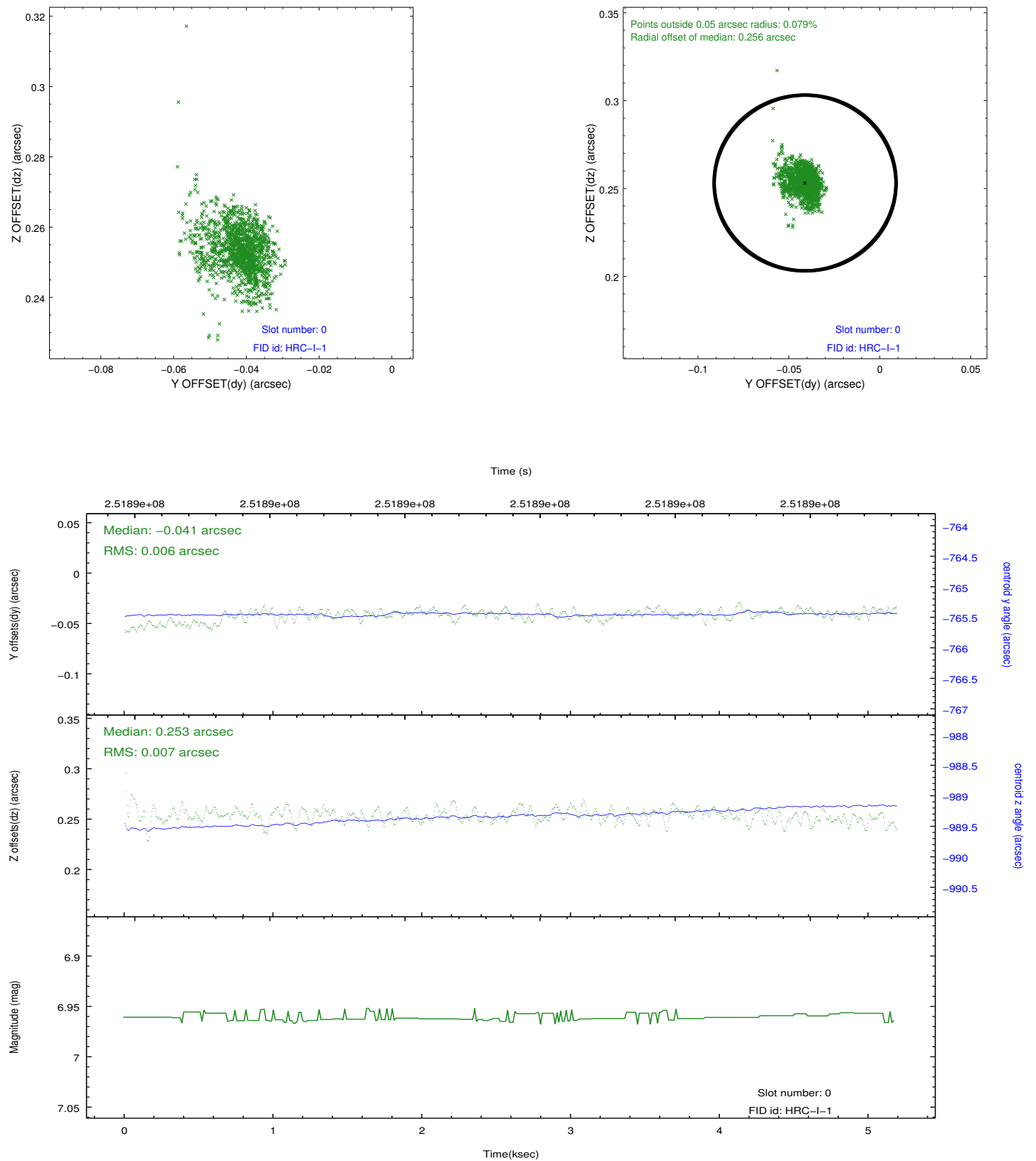


## 2.4.5 Slot 7

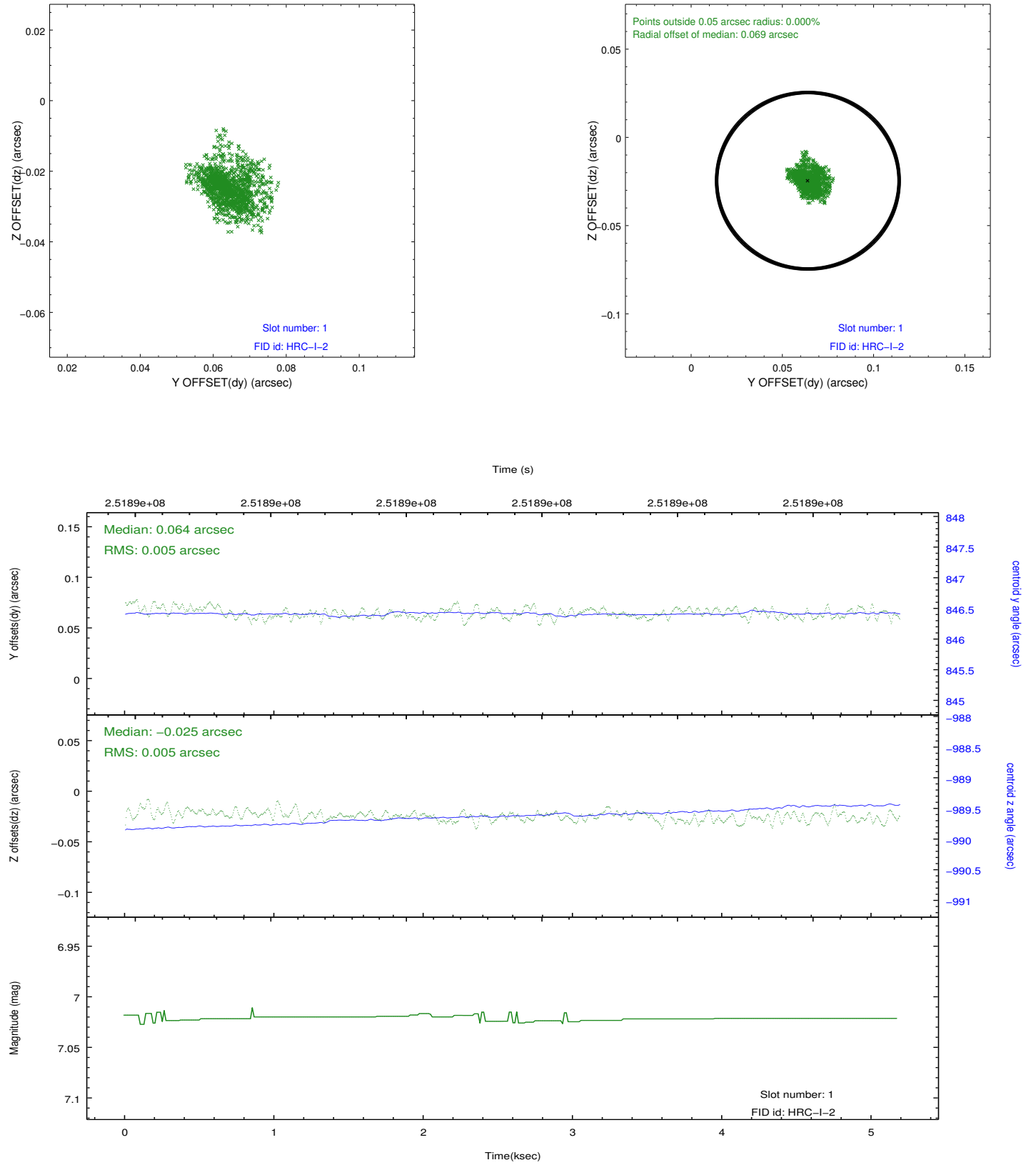


## 2.5 FID Slots

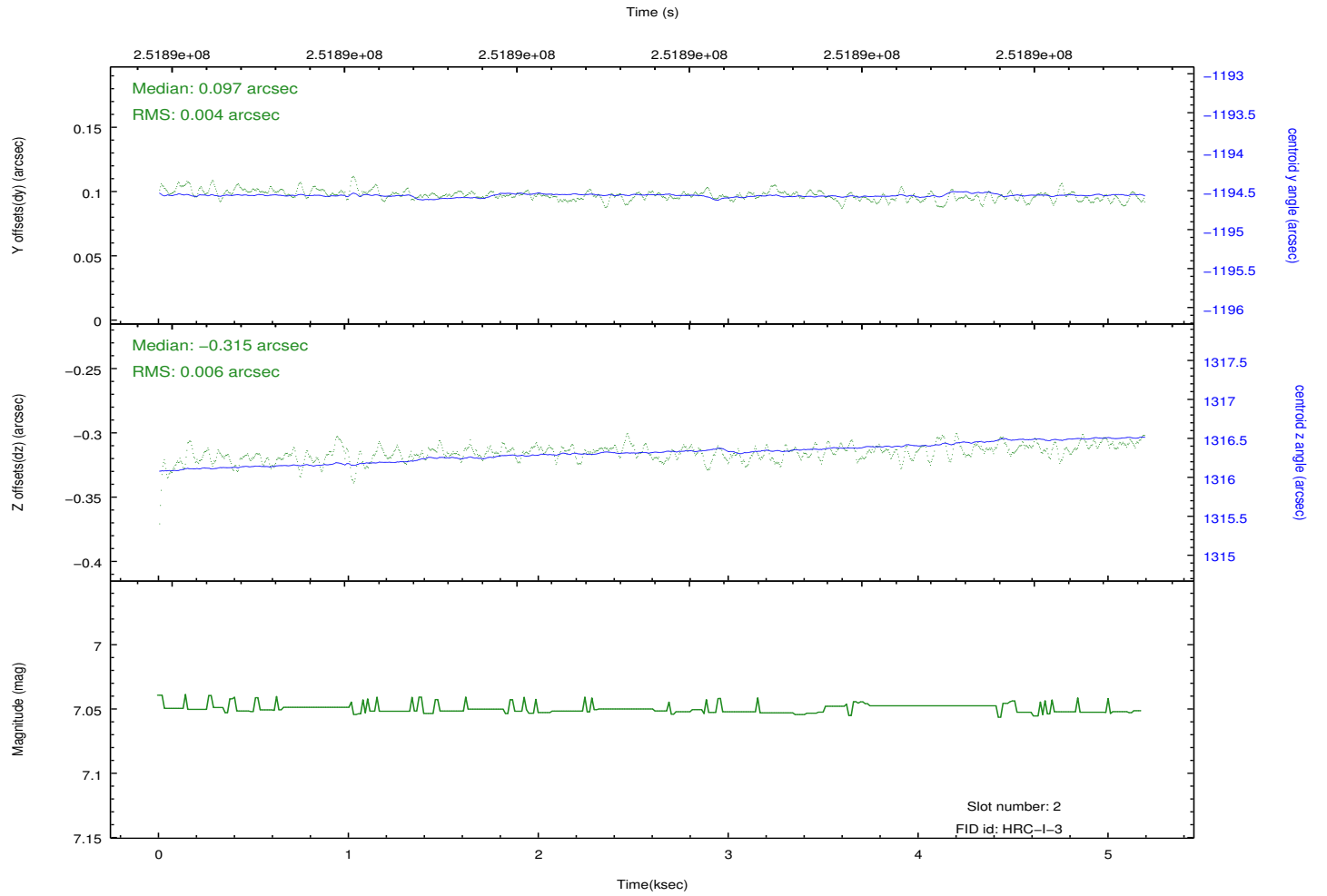
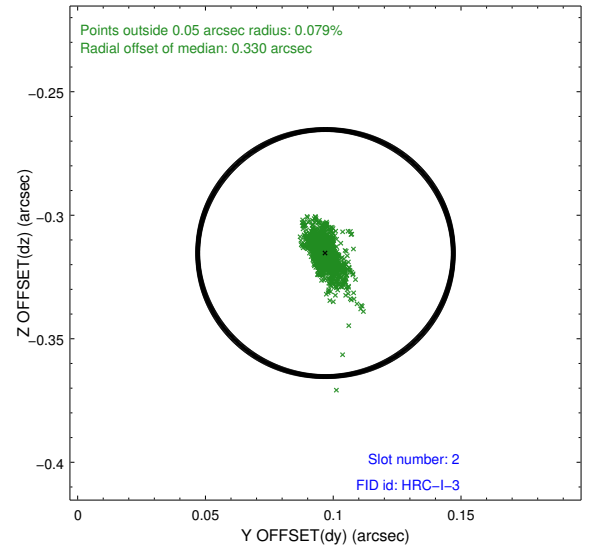
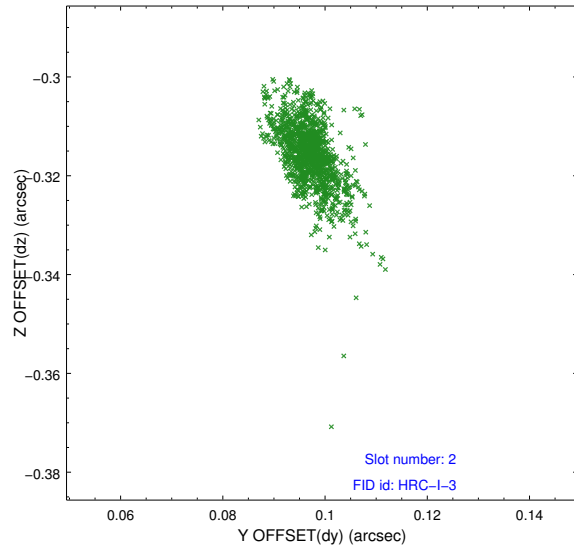
### 2.5.1 Slot 0



## 2.5.2 Slot 1



### 2.5.3 Slot 2



## A Summary

### A.1 Status

V&V Scientist	Jen Lauer
V&V Date (YYYY-MM-DD)	2012.08.12
V&V Edition	1
V&V Disposition and Status	OK
V&V Charge Time	5.189575

### A.2 Comments